



**HAL**  
open science

## **EXPRESSION AND ASSOCIATION DATA STRONGLY SUPPORT JARID2 INVOLVEMENT IN NONSINDROMIC CLEFT LIP WITH OR WITHOUT CLEFT PALATE**

Luca Scapoli, Marcella Martinelli, Furio Pezzetti, Annalisa Palmieri, Ambra Girardi, Anna Savoia, Anna Monica Bianco, Francesco Carinci

### ► **To cite this version:**

Luca Scapoli, Marcella Martinelli, Furio Pezzetti, Annalisa Palmieri, Ambra Girardi, et al.. EXPRESSION AND ASSOCIATION DATA STRONGLY SUPPORT JARID2 INVOLVEMENT IN NONSINDROMIC CLEFT LIP WITH OR WITHOUT CLEFT PALATE. *Human Mutation*, 2010, 31 (7), pp.794. <10.1002/humu.21266>. <hal-00552388>

**HAL Id: hal-00552388**

**<https://hal.science/hal-00552388v1>**

Submitted on 6 Jan 2011

**HAL** is a multi-disciplinary open access archive for the deposit and dissemination of scientific research documents, whether they are published or not. The documents may come from teaching and research institutions in France or abroad, or from public or private research centers.

L'archive ouverte pluridisciplinaire **HAL**, est destinée au dépôt et à la diffusion de documents scientifiques de niveau recherche, publiés ou non, émanant des établissements d'enseignement et de recherche français ou étrangers, des laboratoires publics ou privés.



HAL Authorization



**EXPRESSION AND ASSOCIATION DATA STRONGLY SUPPORT  
JARID2 INVOLVEMENT IN NONSINDROMIC CLEFT LIP WITH  
OR WITHOUT CLEFT PALATE**

Journal:	<i>Human Mutation</i>
Manuscript ID:	humu-2010-0074.R1
Wiley - Manuscript type:	Research Article
Date Submitted by the Author:	29-Mar-2010
Complete List of Authors:	SCAPOLI, LUCA; University of Bologna, Histology, Embryology and Applied Biology Martinelli, Marcella; University of Bologna, Department of Histology, Embryology and applied Biology Pezzetti, Furio; University of Bologna, Department of Histology, Embryology and applied Biology Palmieri, Annalisa; University of Ferrara, Department of D.M.C.C.C., Section of Maxillo-Facial Surgery Girardi, Ambra; University of Bologna, Department of Histology, Embryology and applied Biology Savoia, Anna; University of Trieste Bianco, Anna; University of Trieste Carinci, Francesco; University of Ferrara, Department of D.M.C.C.C., Section of Maxillo-Facial Surgery
Key Words:	Cleft lip, Association analysis, JARID2, jumonji



1  
2  
3 **EXPRESSION AND ASSOCIATION DATA STRONGLY SUPPORT *JARID2***  
4 **INVOLVEMENT IN NONSYNDROMIC CLEFT LIP WITH OR WITHOUT CLEFT**  
5 **PALATE**  
6  
7

8  
9  
10 Luca Scapoli<sup>1\*</sup>, Marcella Martinelli<sup>1</sup>, Furio Pezzetti<sup>1</sup>, Annalisa Palmieri<sup>2</sup>, Ambra Girardi<sup>1</sup>,  
11  
12 Anna Savoia<sup>3</sup>, Anna Monica Bianco<sup>3</sup>, Francesco Carinci<sup>2</sup>  
13  
14

15  
16  
17 <sup>1</sup>Department of Histology, Embryology and Applied Biology, Centre of Molecular Genetics,  
18  
19 University of Bologna, Via Belmeloro, 8 - 40126 Bologna, Italy.  
20  
21

22 <sup>2</sup> Department of D.M.C.C.C., Section of Maxillo-Facial Surgery, University of Ferrara, Corso  
23  
24 Giovecca, 203 - 44100 Ferrara, Italy.  
25  
26

27 <sup>3</sup> Medical Genetics, Department of Reproductive and Developmental Sciences, IRCCS Burlo  
28  
29 Garofolo Hospital, University of Trieste, Via dell'Istria, 65/1 - 34137 Trieste, Italy  
30  
31

32  
33  
34 \*Corresponding author: Luca Scapoli, Ph.D.  
35  
36 Department of Histology, Embryology and Applied Biology  
37  
38 University of Bologna  
39  
40 Via Belmeloro, 8 - 40126 Bologna, Italy  
41  
42 Phone +39-051-2094100 Fax. +39-051-2094110  
43  
44  
45 E-mail: luca.scapoli2@unibo.it  
46  
47  
48  
49

50 Manuscript information:

51 number of figures 3;

52 number of tables 2.

53 Abbreviations: CL/P, Nonsyndromic cleft lip with or without cleft palate.  
54  
55  
56  
57  
58  
59  
60

## Abstract

Nonsyndromic cleft lip with or without cleft palate (CL/P) affects approximately 1 in 1000 births. Genetic studies have provided evidence for the role of several genes and candidate loci in clefting; however conflicting results have been frequently obtained and much have to be done to unravel the complex genetic of CL/P. In the present investigation we have focused on the candidate region in 6p23, a region that have been found linked to CL/P in several investigations, in the attempt to find out the susceptibility gene provisionally named OFC1. Gene expression experiments in mice embryo of positional candidate genes revealed that *JARID2* was highly and specifically expressed in epithelial cells in merging palatal shelves. A family based linkage disequilibrium study confirmed the pivotal role of *JARID2* in orofacial development and strongly supports a role for this gene in CL/P etiology (multiallelic haplotype test  $P = 6 \times 10^{-5}$ ). Understanding the molecular role of *JARID2* within facial development may offer additional information to further unravel the complex genetics of CL/P.

## Keywords

Cleft lip; Cleft palate; *JARID2*; Jumonji; Linkage Disequilibrium; Association; Linkage; 6p23; Complex Disease.

## Introduction

Orofacial clefts are common congenital malformations that may occur as features in more than 300 Mendelian, chromosomal, or teratogenic syndromes. Most frequently, clefting occurs as a unique defect in the so called isolated or “nonsyndromic condition”. There is evidence of a strong genetic predisposition to CL/P, with familial aggregation in about 20% of cases, elevated concordance in monozygotic twins, and a high recurrence risk in relatives. Complex segregation analyses have excluded a simple Mendelian mode of inheritance. Different models have been proposed, ranging from a major gene influence to oligogenic and multifactor models (Scapoli et al., 1999; Schliekelman and Slatkin, 2002). The idea that CL/P results from a complex interaction between genes and environmental factors is widely accepted.

Genetic studies have collected data suggesting a role for several genes and candidate loci in clefting (Carinci et al., 2007); to date, ten different genetic loci predisposing to CL/P, known as *OFC1* to *OFC10*, have been catalogued in the Online Mendelian Inheritance in Man database. *OFC1* (OMIM# 119530), which maps onto chromosome 6p, has been one of the most highly investigated loci since the publication of the pioneering linkage investigation by Eiberg and colleagues (Eiberg et al., 1987). These authors performed a low density genome wide linkage study using 42 protein polymorphisms and obtained a suggestive linkage with the blood clotting factor XIII A (*F13A1*, OMIM# 134570). Although several studies have failed to replicate this finding, substantial data supporting the existence of a CL/P susceptibility gene in this region has been collected. Linkage to genetic markers was observed both by our group and those of others’ (Scapoli et al., 1997; Prescott et al., 2000; Carreno et al., 2002; Moreno et al., 2004; Schultz et al., 2004). We observed linkage and locus heterogeneity for 60% of families associated with D6S259 (Scapoli et al., 1997). Cytogenetic abnormalities of short arm of chromosome 6 have frequently been observed in both syndromic and non syndromic cases, thus supporting the presence of a clefting gene in this region (Topping et al., 2002; Davies et

1  
2  
3 al., 2004). In this report we provide both genetic and functional data to support the role of  
4  
5 *JARID2* (OMIM# 601594) in isolated CL/P adding a gene of major effect to the etiology of  
6  
7 this complex trait.  
8  
9  
10  
11  
12  
13  
14  
15  
16  
17  
18  
19  
20  
21  
22  
23  
24  
25  
26  
27  
28  
29  
30  
31  
32  
33  
34  
35  
36  
37  
38  
39  
40  
41  
42  
43  
44  
45  
46  
47  
48  
49  
50  
51  
52  
53  
54  
55  
56  
57  
58  
59  
60

For Peer Review

## Materials and Methods

### *Expression study*

Seven genes mapping in the LOD score peak area of a previous linkage analysis were considered CL/P candidate genes (Scapoli et al., 1997). The genes from telomere to centromer were: sirtuin 5 (*SIRT5*, GenBank NM\_012241.3 ), nucleolar protein 7 (*NOL7*, GenBank NM\_016167.3), RAN binding protein 9 (*RANBP9*, GenBank NM\_005493.2), coiled-coil domain containing 90A (*CCDC90A*, GenBank NM\_001031713.2), ring finger protein 182 (*RNF182*, GenBank NM\_001165034.1), CD83 molecule (*CD83*, GenBank NM\_004233.3), and jumonji, AT rich interactive domain 2 (*JARID2*, GenBank NM\_004973.2). Gene expression of mice homologous was investigated by RT-PCR and RNA in situ hybridization.

RNA extracted from mouse palate shelves at embryonic day 14.5 was retrotranscribed and used for RT-PCR, while cDNA obtained from several different tissues was used to obtain templates for in situ hybridization probes production (primers sequences in Supp. Table S1). PCR products of candidate genes, obtained with specific primers having tails with for the T3 and T7 RNA polymerase promoter sequences, were subcloned into the pCRII-TOPO vector (TOPO TA Cloning kit; Invitrogen). The plasmid were linearized with the enzymes *NotI* or *BamHI* and transcribed with T7 and T3 RNA polymerase, respectively to obtain antisense and sense probes. Mouse embryos at E14.5 and E15.5 were harvested from C57BL/6 pregnant females and their heads were used for *in situ* RNA hybridization. Coronal sections were cryoprotected by treatment with 30% sucrose in PBS and embedded in OCT. Twenty-micrometer coronal cryosections of embryo heads were collected on superfrost plus slides and postfixed with 4% paraformaldehyde in PBS for 15 min. For *in situ* hybridization, sections were analyzed as previously described (Marigo et al., 2004). As positive controls we used adjacent sections for the hybridization of the two *Myh9* and *Tgfb3* genes because they play a critical role in palate development (Martinelli et al., 2007). Slides were coverslipped with 70%

1  
2  
3 glycerol in PBS and photographed (AxioCam digital camera, Zeiss) using a microscope with  
4  
5  
6 Nomarski optics (Axioplan; Zeiss).

### 7 8 *Sets of families*

9  
10 A sample of 218 unrelated Italian patients with the sole clinical feature of CL/P and their  
11  
12 parents was used in this study. 131 cases were considered sporadic or non-familial, as no other  
13  
14 relatives manifested the malformation, whereas, 87 cases were considered familial because of  
15  
16 a recurrence of at least one case of CL/P within each pedigree. In order to classify the CL/P as  
17  
18 non-syndromic and exclude potential teratogenic influences, a careful clinical exam of the  
19  
20 patient and a detailed anamnesis was carried out to evaluate the presence of any other somatic  
21  
22 or neurological disorder in the family, and the use of known or suspected clefting substances,  
23  
24 such as phenytoin, warfarin, and ethanol, during pregnancy. After informed consent, DNA was  
25  
26 extracted from peripheral blood samples.  
27  
28  
29  
30

### 31 32 *Markers*

33  
34 Initially, nine SNPs within the *JARID2* locus were selected among validated-assays using  
35  
36 the Applied Biosystems SNPbrowser™ Software. Selection was done considering exon  
37  
38 distribution, i.e. lower inter-marker distance where exons were closer to each other, and  
39  
40 preference was accorded to SNPs with low inter-marker linkage disequilibrium and minor  
41  
42 allele frequency higher than .2. Later, after a positive association was found, additional  
43  
44 polymorphic sites were added to the list. Two SNPs were selected in the *DTNBP1* gene  
45  
46 because it is situated downstream very close to *JARID2*, in addition to two insertion/deletion  
47  
48 polymorphisms which were detected in mutation screening. Genotypes of all the SNPs were  
49  
50 obtained using an ABI PRISM 7500 Sequence Detection System and TaqMan chemistry  
51  
52 according to supplier protocols, while the insertions/deletions were typed as a length  
53  
54 polymorphisms by acrylamide gel electrophoresis of PCR products. Table 1 reports a summary  
55  
56  
57  
58  
59  
60 of marker information.

### *Statistical analysis*

Allelic association was conducted with family-based association tests implemented in FBAT program v1.7.3 (Horvath et al., 2001). The additive genetic model was applied for each allelic association test, which examines the transmission of the marker alleles from parents to the affected offspring. In this study, for single-SNP test, FBAT multi-marker test (FBAT-MM) was used to deal with multiple comparisons. The FBAT-MM simultaneously tests H<sub>0</sub>: no linkage or association between any marker and any disease susceptibility locus underlying the trait. This method was developed to test markers in linkage disequilibrium, when a simple Bonferroni-correction for multiple comparisons may be overly conservative to adjust for the complicated multiple testing. Subsequently, each marker contribution was tested with the null hypothesis of no linkage and no association between the markers and the underlying causal locus. The Monte Carlo procedure with 100,000 permutations was performed to calculate the empirical P values for the single-SNP association.

The Haploview program was used to check for Hardy-Weinberg equilibrium and to examine linkage disequilibrium block structure of the *JARID2* gene (Barrett et al., 2005). The D' values for all pairs of SNPs were calculated and the haplotype blocks were estimated using the solid spine method which requires the first and last markers to be in a strong linkage disequilibrium ( $D' > .79$ ) with all intermediate markers, but does not necessarily require the intermediate markers to be in linkage disequilibrium to each other.

The haplotype version of FBAT (HBAT) was applied to test the association between phenotype and haplotypes (Horvath et al., 2004). The mode "a" command was used to obtain both biallelic and multiallelic tests. For the haplotype analyses the Monte Carlo procedure was performed with 1,000,000 permutations.

Point estimates and asymptotic confidence intervals of genotype relative risks for heterozygous and homozygous allele carriers, as well as attributable risk were calculated with

1  
2  
3 case-parent data using the formulae proposed by Scherag and colleagues (Scherag et al., 2002).  
4  
5  
6 The method is based on the likelihood theory and assumes Hardy-Weinberg equilibrium and  
7  
8 absence of population stratification.  
9

### 10 *Sequencing*

11  
12 Mutation searches were performed by direct sequencing of PCR products. Primer pairs  
13  
14 were designed in the intron sequences flanking for each one of the 18 exons, in order to screen  
15  
16 coding sequences and splicing signals (primers sequences in Supp. Table S1). In addition,  
17  
18 1500 bp upstream of the 5'UTR were sequenced as part of a putative promoter region.  
19  
20 Amplimers were checked for quality in agarose gel and sent for purification and bi-directional  
21  
22 DNA sequencing service to Macrogen (Seul, Korea). Sequences were retrieved, aligned,  
23  
24 analyzed, and reviewed using the Sequencer 4.6 program (Gene Codes, Ann Arbor, MI, USA).  
25  
26  
27  
28

### 29 *Transient expression of hybrid minigene in HeLa cells*

30  
31 *JARID2* PCR products of 448 bp carrying the “C” or “G” allele at the rs2076056 were  
32  
33 obtained from genomic DNA using specific primers 6F and 6R modified at their 5' end with a  
34  
35 tail specific for restriction enzyme site NdeI (primers sequences in Supp. Table S1). The two  
36  
37 allelic variants were inserted into the unique NdeI site of the expression vector pTBNde(min)  
38  
39 kindly donated by Dr Franco Pagani (Pagani et al., 2000; Pagani et al., 2003). The constructs  
40  
41 were transfected in HeLa cells and RNA was extracted after 24 ours. RT-PCR was performed  
42  
43 with primers 2-3alpha and B2 (primers sequences in Supp. Table S1) that are expected to  
44  
45 generate a product of 475 bp when exon 6 is correctly spliced. RT-PCR products were directly  
46  
47 sequenced to confirm the specificity of the products.  
48  
49  
50  
51  
52  
53  
54  
55  
56  
57  
58  
59  
60

## Results

Based on our previous linkage analysis, seven positional candidate genes were picked for gene expression studies in mice. Genes - which are *SIRT5*, *NOL7*, *RANBP9*, *CCDC90A*, *RNF182*, *CD83*, and *JARID2* – represent all the known genes mapping on a 2 Mb area around the markers D6S259, where the higher multipoint LOD score were obtained with CL/P multiplex families (Scapoli et al., 1997). *Jarid2* expression was evident after 30 cycles of RT-PCR conducted with cDNA obtained from palatal shelves of mouse embryo at E14.5, while amplimers of *Sirt5*, *Ranbp9* and *Cd83* were obtained only after 35 cycles of amplification (data not shown). Coronal sections of mouse embryos head at E14.5 and E15.5 were analyzed by RNA *in situ* hybridization to evaluate expression of the candidate genes during palate development. *Jarid2* was expressed at high levels in epithelial cells surrounding the nasal cavity and the palatal processes (Fig. 1), while no signal of the other genes was detected in oral area tissues. Since palatal shelves merge and fuse starting from the primary palate and proceeding gradually to the posterior direction, palate development stages can be observed in different sections throughout the antero-posterior axis. As has been reported with *Myh9* and *Tgfb3*, *Jarid2* expression is maintained when shelves adhere to each other at their medial edge epithelia at embryonic day 14.5 giving rise to the medial epithelial seam, and in the epithelial triangles (Martinelli et al., 2007). As the fusion proceeds, the *Jarid2* signal gradually decreases and becomes limited to spots of the medial epithelial seam before completely disappearing after the fusion process is completed (Fig. 1).

Since expression data supported a specific role for *JARID2* in palate development, we tested its involvement in CL/P by linkage disequilibrium using intragenic markers. A total of thirteen polymorphic loci were tested for allelic association with CL/P. First, in order to investigate a potential correlation, 9 SNPs selected within *JARID2* were investigated. Subsequently, as the association data was promising, an additional four SNPs were included in

1  
2  
3 the analysis: two insertions/deletions (markers 7 and 10) within the gene and two others  
4  
5 (markers 12 and 13) within *DTNBP*, a gene located only 2 kb downstream of *JARID2*. In order  
6  
7 to deal with this complex multiple testing issue, we used the FBAT multi-marker test (FBAT-  
8  
9 MM) to test for linkage or association between any marker and any disease susceptibility locus  
10  
11 underlying CL/P. In the FBAT-MM test the P value for association was .0019 when the whole  
12  
13 set of 13 markers was tested, while it was .0008 when only the 11 markers in *JARID2* locus  
14  
15 were considered. P values for the single-marker association analysis computed using 100,000  
16  
17 Monte-Carlo permutations, not adjusted for multiple comparisons, are displayed in Table 1.  
18  
19 Six out of 11 SNPs within *JARID2* showed evidence of association. Among them, markers 5,  
20  
21 6, and 8 gave the most consistent scores for association (P values lower than .001).  
22  
23  
24  
25  
26

27 Linkage disequilibrium between markers was investigated using the Haploview program  
28  
29 (Fig. 2). Three haplotype blocks were identified: the first included markers 1 and 2, the second  
30  
31 markers 4 to 9, and the third markers 12 and 13 (Fig. 2). This structure was consistent with  
32  
33 data from the Hapmap Consortium showing recombination hotspots between the identified  
34  
35 blocks. A Haplotype association analysis was then conducted for each one of the blocks using  
36  
37 1,000,000 Monte-Carlo permutations. P values for the whole markers strongly supported an  
38  
39 association of the *JARID2* gene with CL/P ( $P = .045$  for block1 and  $P = .000019$  for block 2),  
40  
41 while confirming the lack of association with the downstream gene *DTNBP1* ( $P = .71$  for block  
42  
43 3). Association with block 2 remained highly significant even after adjusting for multiple  
44  
45 testing using the most conservative Bonferroni correction method (for three haplotype blocks,  
46  
47 adjusted  $P = .000019 * 3 = .000057$ ). In particular, the third most common haplotype of block 2  
48  
49 resulted as highly overtransmitted to patients (Table 2). This haplotype included all the alleles  
50  
51 that resulted overtransmitted in the pairwise analysis.  
52  
53  
54  
55  
56

57 A haplotype association analysis for block 2 was then conducted separately with familial  
58  
59 and sporadic samples. Two reasons determined this procedure. First, because part of the  
60

1  
2  
3 familial cases (n =38) was those driven the former parametric linkage results, so sporadic cases  
4  
5 may be considered an independent replication sample (Scapoli et al., 1997). Second, because  
6  
7 familial and sporadic cases may have different etiology. In both groups whole marker  
8  
9 association was statistically significant, even though it was stronger in familial than sporadic  
10  
11 cases (P values .0007 and .02, respectively). Since higher statistical significance was obtained  
12  
13 with a smaller sample size (n = 87 and n = 131), we can assume that association was stronger  
14  
15 among familial cases.  
16  
17  
18

19  
20 FBAT statistics demonstrated a significant association between alleles/haplotypes at the  
21  
22 *JARID2* locus and a putative CL/P susceptibility allele. Since FBAT analysis does not provide  
23  
24 for a magnitude of genetic effects we applied the formulae described by Scherag and  
25  
26 colleagues to calculate the genotype risk for each of the markers (Scherag et al., 2002). In line  
27  
28 with the FBAT statistics, higher values were obtained with marker 8; relative risks were 1.83  
29  
30 (95% CI .99-3.41) and 3.10 (95% CI 1.54-6.27) for heterozygous and homozygous carriers,  
31  
32 respectively. The attributable risk, that is the probability of exposure given that a person has  
33  
34 the disease, resulted as .55 (95% CI .28-.81).  
35  
36  
37

38  
39 In order to identify the *JARID2* mutations responsible for CL/P we screened the 18 exons,  
40  
41 exon-intron boundaries, and the putative promoter region by a direct sequencing of PCR  
42  
43 products. We reasoned that CL/P may be due to rare mutations or to a common variant allele/s  
44  
45 present in the high risk haplotype. In order to pursue both hypotheses, mutation screening was  
46  
47 performed in 25 unrelated individuals, 15 of whom belong to the 15 pedigrees showing the  
48  
49 highest LOD score in linkage analysis with 6p23 genetic markers (Scapoli et al., 1997), while  
50  
51 the remaining 10 were selected from cases carrying one or two of the overtransmitted  
52  
53 haplotypes that have been identified in the present study. No obvious mutations were detected.  
54  
55 A number of known synonymous variations, known as rs34326651, rs7768621, rs742099,  
56  
57 rs2235258 and the non-synonymous rs35474598 in exon 7, were detected. None of them was  
58  
59  
60

1  
2  
3 likely to be involved in CL/P since each sequence variant was detected in only a single or a  
4  
5 few samples. Two intronic variant alleles appeared relatively frequently, for this reason we  
6  
7 included these polymorphisms in the linkage disequilibrium study (Table 1, markers 7 and 10).  
8  
9  
10 However, the association results did not sustain their role as a direct cause of CL/P.  
11

12  
13       Aware of the enormous difficulties in trying to determine any potential involvement of  
14  
15 intronic variants in controlling gene expression or RNA maturation, we start to look at the  
16  
17 effect of SNPs on splicing mechanism of *JARID2*. We select the rs2076056, marker 8 in this  
18  
19 study, characterized by the C to G substitution of nucleotide at position +9 in intron 6 of the  
20  
21 human *JARID2*. Genomic PCR products of the exon 6 plus boundaries containing the two  
22  
23 variants were inserted within the NdeI restriction site of the pTBNde(min) expression vector to  
24  
25 be a part of a minigene of three exons. Splicing process of the minigenes were tested in a  
26  
27 transient transfection assay with Hela cells. As confirmed by direct sequence analysis, RT-  
28  
29 PCR products obtained from transfected cells showed that the minigene is spliced as expected  
30  
31 regardless of nucleotide change at rs2976056 (Fig. 3). This data suggest that rs2076056, even  
32  
33 if strongly associated with the disease, does not interfere with the correct maturation  
34  
35 processing of *JARID2* mRNA.  
36  
37  
38  
39  
40  
41  
42  
43  
44  
45  
46  
47  
48  
49  
50  
51  
52  
53  
54  
55  
56  
57  
58  
59  
60

## Discussion

CL/P is a frequent malformation with complex inheritance. Environmental factors and multiple genes have been related to clefting. Several different genes/loci have been claimed to be involved in CL/P etiology, however replication experiments have often failed to validate previous data. OFC1 locus on the short arm of chromosome 6 has been one of the most investigated regions following its initial finding by linkage analysis (Eiberg et al., 1987). Although discordant data have been reported, many authors reported positive linkage with markers in this region (Scapoli et al., 1997; Prescott et al., 2000; Carreno et al., 2002; Moreno et al., 2004; Schultz et al., 2004).

Following our linkage analyses, we decided to screen positional candidate genes with a gene expression investigation, basing on the idea that the CL/P causing gene had to be expressed during palate development. Gene expression in developing palate of seven candidate genes, was investigated by RT-PCR and RNA *in situ* hybridization experiments in mouse embryos. Among them, *Jarid2* showed a high level of expression specifically localized in the medial edge epithelium of merging palatal shelves that disappear immediately after fusion. The critical time of regulated expression suggests a decisive role for *Jarid2* in palate development. Public database searches revealed that *JARID2* was also expressed in different human embryo craniofacial structures relevant to palate and lip development between the 4<sup>th</sup> and the 8<sup>th</sup> week of gestation (Park et al., 2006). Although it cannot be excluded a role for other positional candidate genes, at different developmental stage or with a lower expression level, *JARID2* was prioritized for further investigations.

A family based association study was performed to determine if a common variant of *JARID2* was involved in CL/P. Different SNP alleles and haplotypes appeared significantly overtransmitted to affected individuals and thus associated with a putative CL/P susceptibility allele. Evidence of association was obtained with two independent samples, constituted by

1  
2  
3 familial and sporadic cases, respectively. Stronger association was observed among familial  
4 cases. As expected, genetic factors appear to play a relatively prominent role in this group,  
5 while environmental factors may sometimes play a determining role in sporadic CL/P. The  
6 attributable risk, that is the percentage of affecteds attributable to the risk allele, calculated for  
7 the marker 8 was .55 (95% CI .28-.81), while relative risks were 1.83 (95% CI .99-3.41) and  
8 3.10 (95% CI 1.54-6.27) for heterozygous and homozygous carriers, respectively. The method  
9 used to calculate these risks implicitly assumes that the disease is caused by a single functional  
10 SNP which has itself been investigated. Since there is no evidence that marker 8 directly  
11 causes CL/P, the risk calculated probably represents an underestimation of the genetic effect of  
12 the real mutation/s (Franke et al., 2005).  
13  
14  
15  
16  
17  
18  
19  
20  
21  
22  
23  
24  
25  
26

27 Mutations were searched in patients carrying the risk haplotype, where a common  
28 causative variant is more likely to be found, as well as in patients of linked multiplex families  
29 where less common variants, conferring an higher risk, may be identified (Bodmer and  
30 Bonilla, 2008). No obvious mutations in *JARID2* coding regions were found among 25  
31 selected patient and our initial attempt by functional study to correlate common variant with  
32 alteration of the splicing process was also unsuccessful. The inability to find pathogenic alleles  
33 within regions statistically associated with pathological phenotypes is a relatively common  
34 scenario in multifactor disease research, suggesting that greater efforts should be made in the  
35 attempt to identify those subtle genetic abnormalities, which lead to disease susceptibility,  
36 such as nucleotide changes in regions regulating gene expression or the splicing mechanism.  
37  
38  
39  
40  
41  
42  
43  
44  
45  
46  
47  
48  
49

50 Previously, six genes which map in 6p23-p25 were considered for a linkage disequilibrium  
51 study that involved 64 candidate genes and 58 nuclear families with orofacial clefting (Park et  
52 al., 2006). A possible role for *C6orf105* was reported, while *JARID2* did not show association.  
53 These results appear in contrast with our data, but they should be considered with caution  
54 because were obtained with a small sample size. Otherwise, the discrepancy might be due to  
55  
56  
57  
58  
59  
60

1  
2  
3 sample composition (familial/sporadic cases ratio), to genetic heterogeneity, or to the presence  
4  
5 of different susceptibility genes in the two samples. These argumentation may also explain  
6  
7 why no association with 6p23, or IRF6 markers was observed in the recent published genome  
8  
9 wide association analyses (Birnbaum et al., 2009; Grant et al., 2009; Mangold et al., 2009).  
10  
11

12 *JARID2* codes for a transcription factor with an AT-Rich interaction domain (ARID) in  
13  
14 association with two homology Jmj regions (JmjC and JmjN) of members of the jumonji  
15  
16 family (Jung et al., 2005). Although the functional roles of Jarid2 remain largely unknown,  
17  
18 knockout experiments have revealed its contribution to mouse embryonic development (Jung  
19  
20 et al., 2005). Homozygous mutants are often lethal and reveal that Jarid2 plays an important  
21  
22 role in heart and liver development, neural tube closure, and haematopoiesis. Orofacial clefting  
23  
24 was not described as a feature of knockout mice but it should be noted that the phenotypes of  
25  
26 mutants vary considerably, depending on genetic background. Specifically, heart defects may  
27  
28 include double-outlet right ventricle and/or prominent interventricular septal defects.  
29  
30 Interestingly, the ventricular septum grows and fuses to the inferior endocardial cushion,  
31  
32 dividing the ventricle into two chambers in a process that shares some homologies with palate  
33  
34 development (Olson, 2004). The hypothesis that heart and orofacial development share some  
35  
36 molecular pathways is supported by the evidence that cardiac defects and CL/P, or cleft palate,  
37  
38 are features that frequently occurs together in birth syndromes (to date, 180 entries in OMIM).  
39  
40  
41  
42  
43  
44

45 Recently published papers have shown that JARID2 interacts with the Polycomb-  
46  
47 Repressive Complex 2 (PRC2) (Pasini et al., ; Peng et al., 2009). PRC2 regulates  
48  
49 developmental gene expression patterns influencing chromatin state via histone H3  
50  
51 methylation. In the JARID2/PRC2 complex, JARID2 promotes selective DNA binding and  
52  
53 negatively regulates histone methylation activity (Pasini et al., ; Peng et al., 2009). Genome-  
54  
55 wide chromatin immunoprecipitation sequencing revealed that, in mouse embryonic stem  
56  
57 cells, JARID2 can binds promoter regions of many genes essential for normal development  
58  
59  
60

1  
2  
3 and differentiation. Interestingly, this group includes several genes that are known, or  
4  
5 suspected to be involved in CL/P malformation, such as members of the fibroblast growth  
6  
7 factor, forkhead/winged-helix, T BoX, msh homeobox, and Wnt families. It has been shown  
8  
9 that the ARID domain of JARID2 is essential for the proper differentiation of mouse  
10  
11 embryonic stem cells and for normal *Xenopus laevis* early development (Pasini et al., ; Peng et  
12  
13 al., 2009). However, consisting with the evidence that JARID2 is able to bind different DNA  
14  
15 sequences (Kim et al., 2003), it has been proposed that the association of PRC2 with specific  
16  
17 target genes is not only determined by JARID2, but could depends by JARID2 in combination  
18  
19 with other transcription factors (Pasini et al.).  
20  
21  
22  
23  
24

25 In this paper compelling evidence supporting a role for JARID2 in orofacial development  
26  
27 has been shown. The gene is specifically expressed in palatal shelves during critical time  
28  
29 points and a family based association analysis is consistent with *JARID2* as the *OFC1* gene  
30  
31 involved in CL/P. Understanding the molecular role of JARID2 within this process, may offer  
32  
33 additional information to detect other genetic factors and further unravel the complex genetics  
34  
35 of CL/P.  
36  
37  
38  
39  
40  
41  
42  
43  
44  
45  
46  
47  
48  
49  
50  
51  
52  
53  
54  
55  
56  
57  
58  
59  
60

### Acknowledgements

This work is dedicated to the memory of our mentor Prof. Paolo Carinci. We are indebted to Jeff Murray for helpful discussions and critical reading of the manuscript. We thank F. Pagani whom kindly supplied the pTBNde(min) vector. This work was funded in part by the Italian Telethon Foundation (GGPO5147), University of Bologna (RFO), University of Ferrara (FAR), and Fondazione Cassa di Risparmio di Ferrara.

For Peer Review

**References**

- 1  
2  
3  
4  
5  
6 Barrett JC, Fry B, Maller J, Daly MJ. 2005. Haploview: analysis and visualization of LD and  
7 haplotype maps. *Bioinformatics* 21(2):263-265.  
8  
9  
10 Birnbaum S, Ludwig KU, Reutter H, Herms S, Steffens M, Rubini M, Baluardo C, Ferrian M,  
11 Almeida de Assis N, Alblas MA, Barth S, Freudenberg J, Lauster C, Schmidt G,  
12 Scheer M, Braumann B, Berge SJ, Reich RH, Schiefke F, Hemprich A, Potzsch S,  
13 Steegers-Theunissen RP, Potzsch B, Moebus S, Horsthemke B, Kramer FJ, Wienker  
14 TF, Mossey PA, Propping P, Cichon S, Hoffmann P, Knapp M, Nothen MM, Mangold  
15 E. 2009. Key susceptibility locus for nonsyndromic cleft lip with or without cleft  
16 palate on chromosome 8q24. *Nat Genet* 41(4):473-477.  
17  
18  
19 Bodmer W, Bonilla C. 2008. Common and rare variants in multifactorial susceptibility to  
20 common diseases. *Nat Genet* 40(6):695-701.  
21  
22  
23 Carinci F, Scapoli L, Palmieri A, Zollino I, Pezzetti F. 2007. Human genetic factors in  
24 nonsyndromic cleft lip and palate: an update. *Int J Pediatr Otorhinolaryngol*  
25 71(10):1509-1519.  
26  
27  
28 Carreno H, Suazo J, Paredes M, Sola J, Valenzuela J, Blanco R. 2002. [Association between  
29 cleft lip/palate phenotype and non syndrome microsatellite markers located in 6p, 17q  
30 and 19q]. *Rev Med Chil* 130(1):35-44.  
31  
32  
33 Davies SJ, Wise C, Venkatesh B, Mirza G, Jefferson A, Volpi EV, Ragoussis J. 2004.  
34 Mapping of three translocation breakpoints associated with orofacial clefting within  
35 6p24 and identification of new transcripts within the region. *Cytogenet Genome Res*  
36 105(1):47-53.  
37  
38  
39 Eiberg H, Bixler D, Nielsen LS, Conneally PM, Mohr J. 1987. Suggestion of linkage of a  
40 major locus for nonsyndromic orofacial cleft with F13A and tentative assignment to  
41 chromosome 6. *Clin Genet* 32(2):129-132.  
42  
43  
44 Franke D, Philippi A, Tores F, Hager J, Ziegler A, Konig IR. 2005. On confidence intervals  
45 for genotype relative risks and attributable risks from case parent trio designs for  
46 candidate-gene studies. *Hum Hered* 60(2):81-88.  
47  
48  
49 Grant SF, Wang K, Zhang H, Glaberson W, Annaiah K, Kim CE, Bradfield JP, Glessner JT,  
50 Thomas KA, Garris M, Frackelton EC, Otieno FG, Chiavacci RM, Nah HD, Kirschner  
51 RE, Hakonarson H. 2009. A genome-wide association study identifies a locus for  
52 nonsyndromic cleft lip with or without cleft palate on 8q24. *J Pediatr* 155(6):909-913.  
53  
54  
55 Horvath S, Xu X, Laird NM. 2001. The family based association test method: strategies for  
56 studying general genotype--phenotype associations. *Eur J Hum Genet* 9(4):301-306.  
57  
58  
59 Horvath S, Xu X, Lake SL, Silverman EK, Weiss ST, Laird NM. 2004. Family-based tests for  
60 associating haplotypes with general phenotype data: application to asthma genetics.  
*Genet Epidemiol* 26(1):61-69.

- 1  
2  
3 Jung J, Mysliwiec MR, Lee Y. 2005. Roles of JUMONJI in mouse embryonic development.  
4 Dev Dyn 232(1):21-32.  
5  
6  
7 Kim TG, Kraus JC, Chen J, Lee Y. 2003. JUMONJI, a critical factor for cardiac development,  
8 functions as a transcriptional repressor. J Biol Chem 278(43):42247-42255.  
9  
10 Mangold E, Reutter H, Birnbaum S, Walier M, Mattheisen M, Henschke H, Lauster C,  
11 Schmidt G, Schiefke F, Reich RH, Scheer M, Hemprich A, Martini M, Braumann B,  
12 Krimmel M, Opitz C, Lenz JH, Kramer FJ, Wienker TF, Nothen MM, Diaz Lacava A.  
13 2009. Genome-wide linkage scan of nonsyndromic orofacial clefting in 91 families of  
14 central European origin. Am J Med Genet A 149A(12):2680-2694.  
15  
16  
17 Marigo V, Nigro A, Pecci A, Montanaro D, Di Stazio M, Balduini CL, Savoia A. 2004.  
18 Correlation between the clinical phenotype of MYH9-related disease and tissue  
19 distribution of class II nonmuscle myosin heavy chains. Genomics 83(6):1125-1133.  
20  
21  
22 Martinelli M, Di Stazio M, Scapoli L, Marchesini J, Di Bari F, Pezzetti F, Carinci F, Palmieri  
23 A, Carinci P, Savoia A. 2007. Cleft lip with or without cleft palate: implication of the  
24 heavy chain of non-muscle myosin IIA. J Med Genet 44(6):387-392.  
25  
26  
27 Moreno LM, Arcos-Burgos M, Marazita ML, Krahn K, Maher BS, Cooper ME, Valencia-  
28 Ramirez CR, Lidral AC. 2004. Genetic analysis of candidate loci in non-syndromic  
29 cleft lip families from Antioquia-Colombia and Ohio. Am J Med Genet A 125(2):135-  
30 144.  
31  
32  
33 Olson EN. 2004. A decade of discoveries in cardiac biology. Nat Med 10(5):467-474.  
34  
35  
36 Pagani F, Buratti E, Stuani C, Romano M, Zuccato E, Niksic M, Giglio L, Faraguna D,  
37 Baralle FE. 2000. Splicing factors induce cystic fibrosis transmembrane regulator  
38 exon 9 skipping through a nonevolutionary conserved intronic element. J Biol Chem  
39 275(28):21041-21047.  
40  
41  
42 Pagani F, Stuani C, Tzetis M, Kanavakis E, Efthymiadou A, Doudounakis S, Casals T,  
43 Baralle FE. 2003. New type of disease causing mutations: the example of the  
44 composite exonic regulatory elements of splicing in CFTR exon 12. Hum Mol Genet  
45 12(10):1111-1120.  
46  
47  
48 Park JW, Cai J, McIntosh I, Jabs EW, Fallin MD, Ingersoll R, Hetmanski JB, Vekemans M,  
49 Attie-Bitach T, Lovett M, Scott AF, Beaty TH. 2006. High throughput SNP and  
50 expression analyses of candidate genes for non-syndromic oral clefts. J Med Genet  
51 43(7):598-608.  
52  
53  
54 Pasini D, Cloos PA, Walfridsson J, Olsson L, Bukowski JP, Johansen JV, Bak M, Tommerup  
55 N, Rappsilber J, Helin K. JARID2 regulates binding of the Polycomb repressive  
56 complex 2 to target genes in ES cells. Nature.  
57  
58  
59 Peng JC, Valouev A, Swigut T, Zhang J, Zhao Y, Sidow A, Wysocka J. 2009. Jarid2/Jumonji  
60 coordinates control of PRC2 enzymatic activity and target gene occupancy in  
pluripotent cells. Cell 139(7):1290-1302.

- 1  
2  
3 Prescott NJ, Lees MM, Winter RM, Malcolm S. 2000. Identification of susceptibility loci for  
4 nonsyndromic cleft lip with or without cleft palate in a two stage genome scan of  
5 affected sib-pairs. *Hum Genet* 106(3):345-350.  
6  
7  
8 Scapoli C, Collins A, Martinelli M, Pezzetti F, Scapoli L, Tognon M. 1999. Combined  
9 segregation and linkage analysis of nonsyndromic orofacial cleft in two candidate  
10 regions. *Ann Hum Genet* 63(Pt 1):17-25.  
11  
12 Scapoli L, Pezzetti F, Carinci F, Martinelli M, Carinci P, Tognon M. 1997. Evidence of  
13 linkage to 6p23 and genetic heterogeneity in nonsyndromic cleft lip with or without  
14 cleft palate. *Genomics* 43(2):216-220.  
15  
16  
17 Scherag A, Dempfle A, Hinney A, Hebebrand J, Schafer H. 2002. Confidence intervals for  
18 genotype relative risks and allele frequencies from the case parent trio design for  
19 candidate-gene studies. *Hum Hered* 54(4):210-217.  
20  
21  
22 Schliekelman P, Slatkin M. 2002. Multiplex relative risk and estimation of the number of loci  
23 underlying an inherited disease. *Am J Hum Genet* 71(6):1369-1385.  
24  
25  
26 Schultz RE, Cooper ME, Daack-Hirsch S, Shi M, Nepomucena B, Graf KA, O'Brien EK,  
27 O'Brien SE, Marazita ML, Murray JC. 2004. Targeted scan of fifteen regions for  
28 nonsyndromic cleft lip and palate in Filipino families. *Am J Med Genet A* 125(1):17-  
29 22.  
30  
31  
32 Topping A, Harris P, Moss AL. 2002. The 6p deletion syndrome: a new orofacial clefting  
33 syndrome and its implications for antenatal screening. *Br J Plast Surg* 55(1):68-72.  
34  
35  
36  
37  
38  
39  
40  
41  
42  
43  
44  
45  
46  
47  
48  
49  
50  
51  
52  
53  
54  
55  
56  
57  
58  
59  
60

### Figure legends

Figure 1 - In situ RNA hybridization of *Jarid2* during fusion of palatal shelves in mouse between E14.5 and E15.5. The palatal epithelium shows a strong *Jarid2* hybridization signal along the anterior–posterior axis when the shelves adhere to each other at their medial edge epithelia (arrow). At E15.5 the fusion of palatal shelves terminates and the expression is limited in spots (arrow) before disappearing completely at the end of the process. Ps. Palatal shelves; t, tongue; nc, nasal cavity.

Figure 2 - Schematic view of linkage disequilibrium results. From the top to the bottom: chromosome 6 coordinates, genes located within the region, hapmap consortium hotspot recombination data, positions of SNPs genotyped in this study, and identified haplotype blocks. The  $D'$  values indicating the linkage disequilibrium relationships between each SNP pair are reported in each box.

Figure 3 – Effect of SNP rs2076056 of the human *JARID2* gene in a minigene transient transfection assay. A) Schematic representation of the genomic PCR product inserted within NdeI restriction site of pTBNde(min). Alpha-globin, fibronectin and human *JARID2* exons are indicated in black, shaded and white boxes, respectively. The sequence surrounding the underlined C to G polymorphism (rs2076056), which is localized at nucleotide +9 of intron 6, is also shown. Sequences from exon 6 and intron 6 are in uppercase and lowercase, respectively. B) RT-PCR analysis of transient transfection of *JARID2* exon 6 minigene in HeLa cells using primers indicated by arrows in the schematic representation of the minigene. Lane 1, molecular marker (100 bp DNA ladder; New England, Biolabs); lane 2, pTBNde(min) alone showing a product of 239 bp; lanes 3 and 4, pTBNde(min) including *JARID2* exon 6 with variant C and G, respectively both generating a product of 475 bp; Lane 5, negative control.

Table 1. Markers information and results of allelic association based on 100,000x MonteCarlo permutations.

Marker	dbSNP ID <sup>a</sup>	genomic position <sup>b</sup>	alleles <sup>c</sup>	MAF <sup>d</sup>	Z score <sup>e</sup>	P value
1	rs6915344	chr6:15348423	C/T	0.403	-1.781	0.08058
2	rs9464779	chr6:15362784	T/C	0.490	0.420	0.75238
3	rs2072820	chr6:15482523	T/C	0.497	2.434	0.01720
4	rs2237149	chr6:15520044	C/A	0.382	-2.523	0.01370
5	rs2299043	chr6:15565149	G/A	0.316	3.260	0.00089
6	rs2237138	chr6:15571374	T/C	0.330	3.677	0.00012
7	rs71932765	chr6:15576710	in/del	0.340	-1.755	0.08893
8	rs2076056	chr6:15595761	C/G	0.321	3.681	0.00023
9	rs2282819	chr6:15611488	G/A	0.289	-2.286	0.02297
10	rs34554301	chr6:15621379	in/del	0.214	1.229	0.20040
11	rs2072821	chr6:15626015	G/C	0.253	-1.249	0.22333
12	rs2056942	chr6:15650277	C/A	0.241	0.474	0.56145
13	rs35861734	chr6:15716490	A/C	0.242	0.000	0.97672

<sup>a</sup>NCBI-SNPs data base accession numbers

<sup>b</sup>UCSC Genome Browser on Human March 2006 assembly

<sup>c</sup>Alleles in JARID2 coding frame, major allele first

<sup>d</sup>Minor Allele Frequency

<sup>e</sup>FBAT Z score for the major allele, positive scores means overtransmission, while negative undertransmission

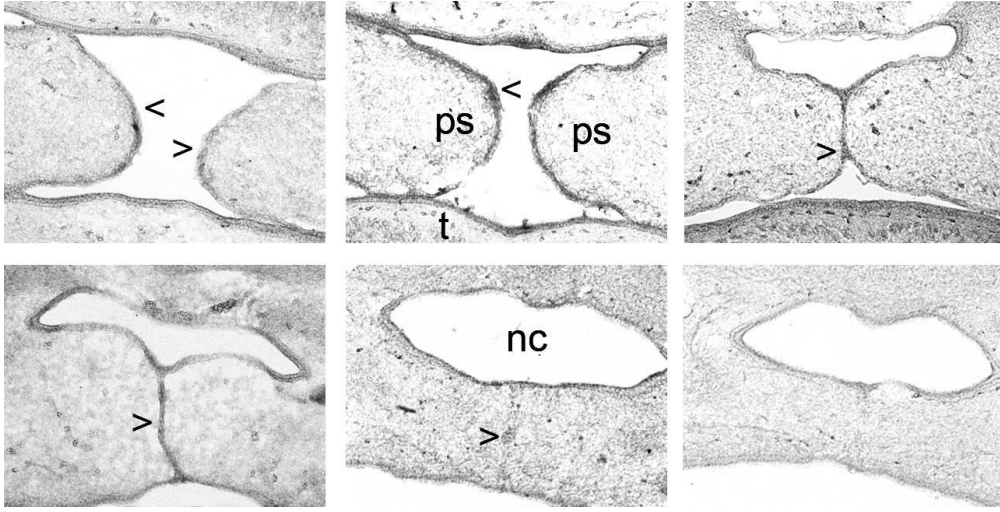
Table 2. Association analysis for haplotypes of block 2 with frequency >1%.  
Haplotype 3 showed positive association, while haplotype 9 negative association.

haplotype	Marker						freq <sup>a</sup>	P value <sup>b</sup>
	4	5	6	7	8	9		
h1	c	g	t	in	c	g	0.27	1.0
h2	c	a	c	in	g	g	0.26	1.0
h3	a	g	t	del	c	a	0.21	0.000108
h4	a	g	t	del	c	g	0.06	1.0
h5	a	g	t	in	c	g	0.04	1.0
h6	a	g	t	in	c	a	0.02	1.0
h7	c	a	c	in	c	g	0.02	1.0
h8	c	g	t	del	c	g	0.01	1.0
h9	a	g	t	del	g	a	0.01	0.035226

<sup>a</sup>Estimated haplotype frequency

<sup>b</sup>Empirical P values corrected for multiple testing

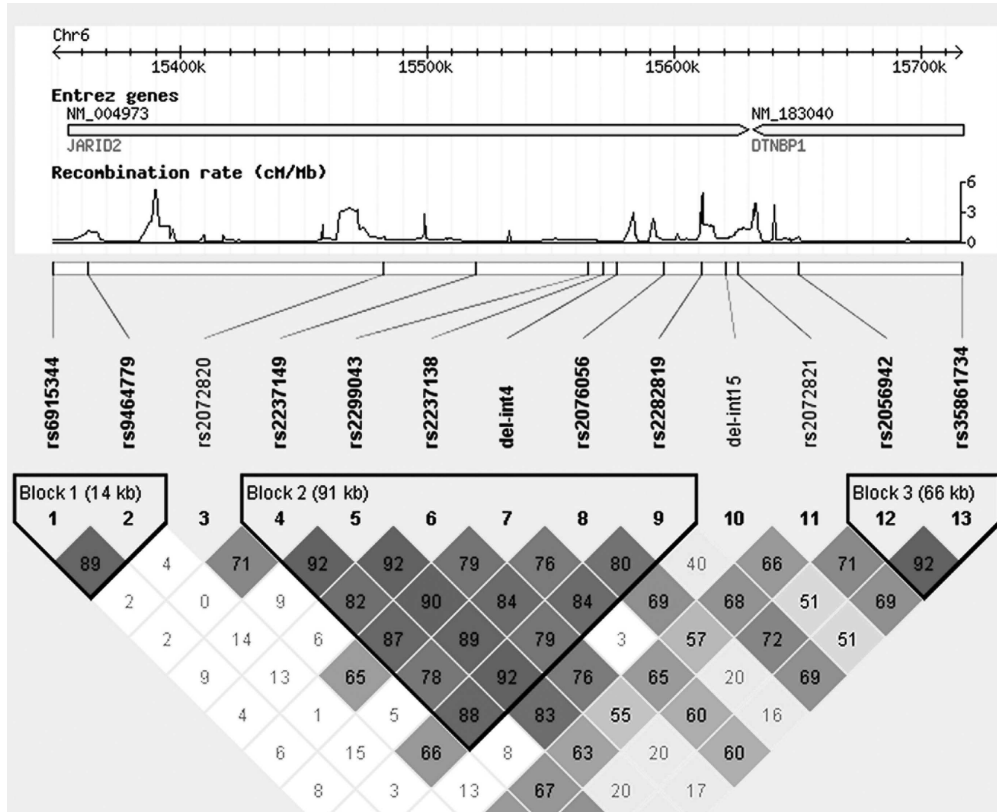
1  
2  
3  
4  
5  
6  
7  
8  
9  
10  
11  
12  
13  
14  
15  
16  
17  
18  
19  
20  
21  
22  
23  
24  
25  
26  
27  
28  
29  
30  
31  
32  
33  
34  
35  
36  
37  
38  
39  
40  
41  
42  
43  
44  
45  
46  
47  
48  
49  
50  
51  
52  
53  
54  
55  
56  
57  
58  
59  
60



108x55mm (300 x 300 DPI)

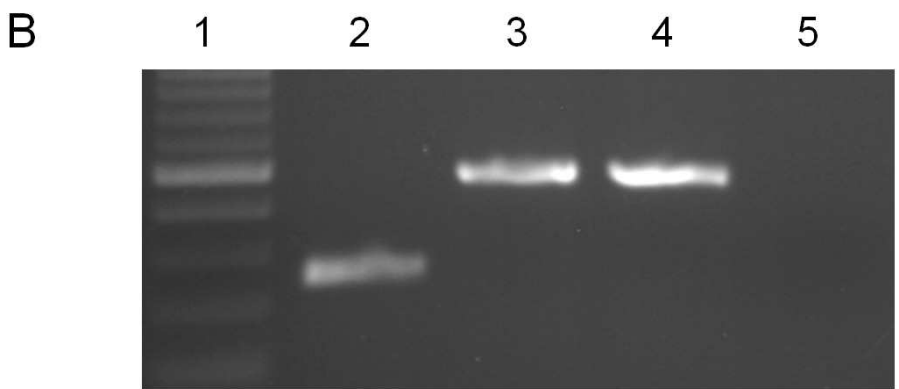
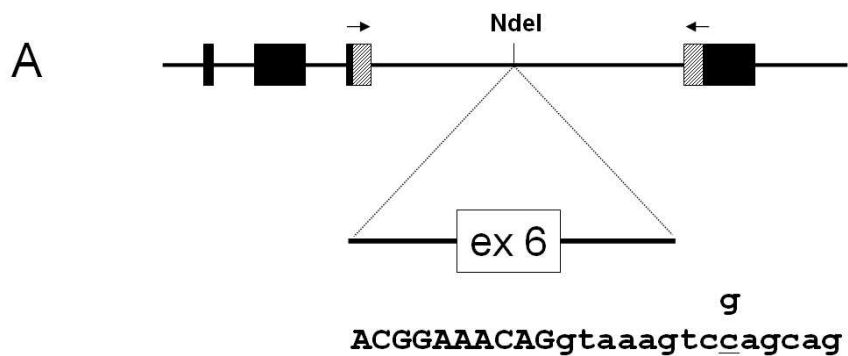
Peer Review

1  
2  
3  
4  
5  
6  
7  
8  
9  
10  
11  
12  
13  
14  
15  
16  
17  
18  
19  
20  
21  
22  
23  
24  
25  
26  
27  
28  
29  
30  
31  
32  
33  
34  
35  
36  
37  
38  
39  
40  
41  
42  
43  
44  
45  
46  
47  
48  
49  
50  
51  
52  
53  
54  
55  
56  
57  
58  
59  
60



232x188mm (300 x 300 DPI)

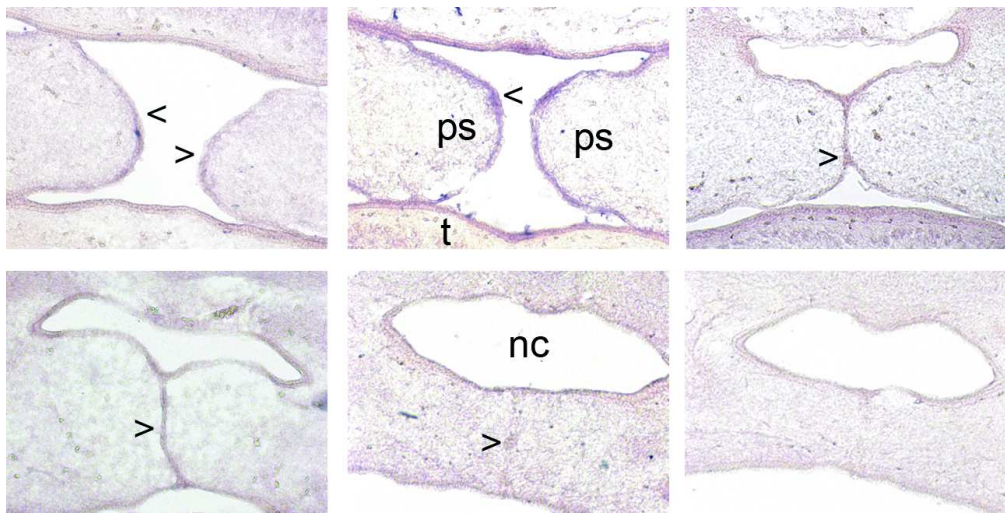
1  
2  
3  
4  
5  
6  
7  
8  
9  
10  
11  
12  
13  
14  
15  
16  
17  
18  
19  
20  
21  
22  
23  
24  
25  
26  
27  
28  
29  
30  
31  
32  
33  
34  
35  
36  
37  
38  
39  
40  
41  
42  
43  
44  
45  
46  
47  
48  
49  
50  
51  
52  
53  
54  
55  
56  
57  
58  
59  
60



48x40mm (600 x 600 DPI)

iew

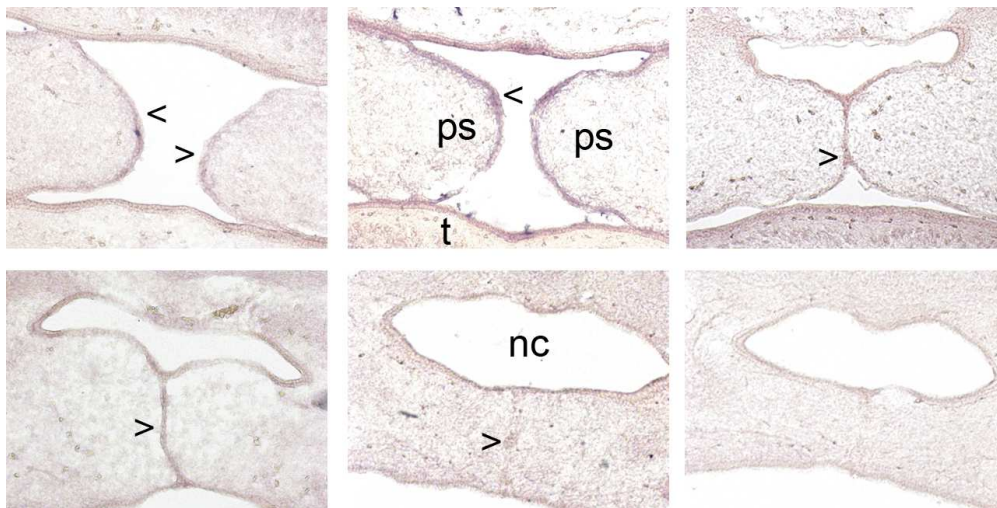
1  
2  
3  
4  
5  
6  
7  
8  
9  
10  
11  
12  
13  
14  
15  
16  
17  
18  
19  
20  
21  
22  
23  
24  
25  
26  
27  
28  
29  
30  
31  
32  
33  
34  
35  
36  
37  
38  
39  
40  
41  
42  
43  
44  
45  
46  
47  
48  
49  
50  
51  
52  
53  
54  
55  
56  
57  
58  
59  
60



108x55mm (300 x 300 DPI)

Peer Review

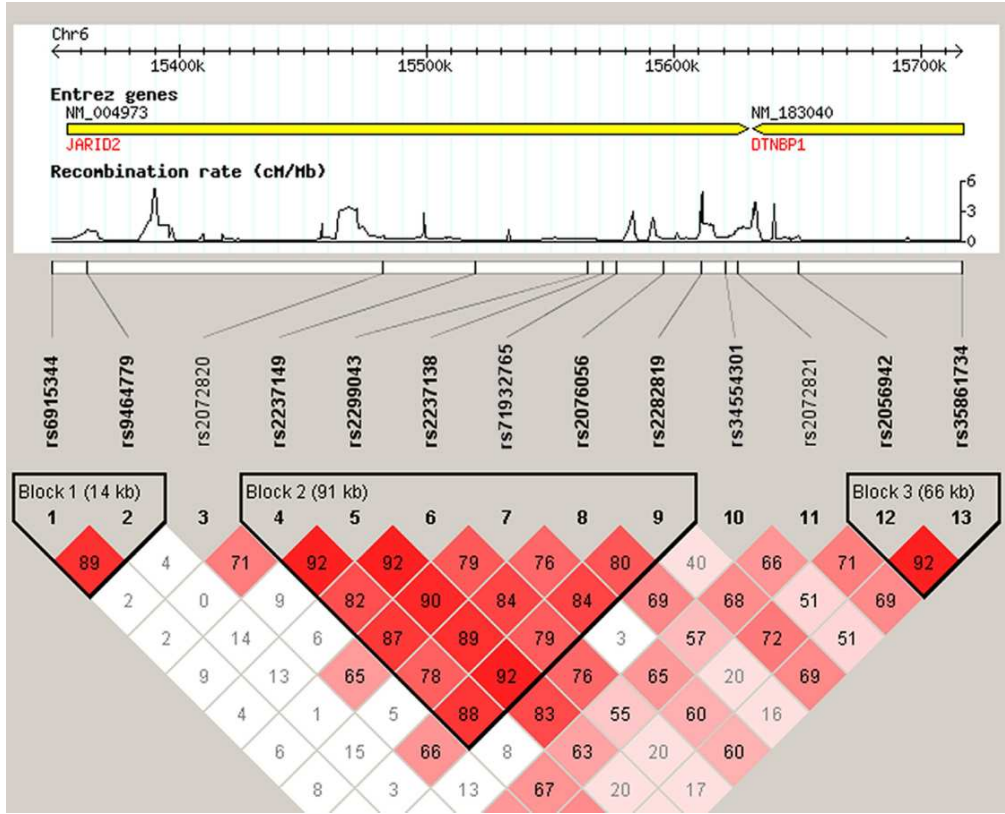
1  
2  
3  
4  
5  
6  
7  
8  
9  
10  
11  
12  
13  
14  
15  
16  
17  
18  
19  
20  
21  
22  
23  
24  
25  
26  
27  
28  
29  
30  
31  
32  
33  
34  
35  
36  
37  
38  
39  
40  
41  
42  
43  
44  
45  
46  
47  
48  
49  
50  
51  
52  
53  
54  
55  
56  
57  
58  
59  
60



108x55mm (300 x 300 DPI)

Peer Review

1  
2  
3  
4  
5  
6  
7  
8  
9  
10  
11  
12  
13  
14  
15  
16  
17  
18  
19  
20  
21  
22  
23  
24  
25  
26  
27  
28  
29  
30  
31  
32  
33  
34  
35  
36  
37  
38  
39  
40  
41  
42  
43  
44  
45  
46  
47  
48  
49  
50  
51  
52  
53  
54  
55  
56  
57  
58  
59  
60



47x38mm (600 x 600 DPI)

view

1  
2  
3 Primers for RT-PCR (mouse)  
4

5 MRNF182F aagaaatgcctgcctgagaa  
6 MRNF182R ggacgtctgaaagagcaagg  
7 CCDC90AF GAGAGCTCAGCCTGTCTGCT  
8 CCDC90AR ATTTCCCTGCTGCATCTTGCT  
9 RANBP9f gatggctacatgggaattgg  
10 RANBP9r tccattcttcgtgtaaaagca  
11 HMjarid2F GATTGCACAAGCAGAAGCAA  
12 HMjarid2R AGCCACTTTTCGAGGCTTTTT  
13 HMnol71F GAGGCGATGGTGGACGAG  
14 HMnol71R CTGGCGAAAGTCAGCTCCT  
15 HMsirt5F TGGTCATCACCCAGAACATC  
16 HMsirt5R ACGTGAGGTTCGAGCAAG  
17 Mcd83F Tccagctcctgtttctaggc  
18 Mcd83R agctgttttgcttgcctctcc  
19 CD83musF AAACCTGGTACGGAACAAGC  
20 CD83musR TGCTGGGGAATAGTTCCTG  
21  
22  
23  
24  
25  
26  
27

28 Primers for RNA in situ hybridization (mouse)  
29

30 RNF182-F-T3 attaaccctcactaaaggaTCCTTTAATCCAAGTCA  
31 RNF182-R-T7 taatacagactcactatagggACACGGTGGTGACAGAG  
32 CCDC90A-F-T3 attaaccctcactaaaggaTTTTATCGCCTGTGGA  
33 CCDC90A-R-T7 taatacagactcactatagggaaaccagagacaaagg  
34 RANBP9-F-T3 attaaccctcactaaaggaCAGGCCACACAGTGTCTA  
35 RANBP9-F-T7 taatacagactcactatagggtcggaacagctcccaat  
36 NOL7-F-T7 taatacagactcactatagggTTCATTTCTCAAAATTTAGTC  
37 NOL7-F-T3 attaaccctcactaaaggaCACACATGGTAGGGAAGA  
38 SIRT5-F-T7 taatacagactcactatagggCACTAACGGGAAAAAT  
39 SIRT5-F-T3 attaaccctcactaaaggaagtaagcactgaaaaga  
40 CD83musT7 gtgtaatacagactcactatagggAGTCACCTCCCCAAGCAAAC  
41 CD83musT3 agaattaaccctcactaaagggACCTTCGCACTGGGAAATTA  
42 JARID2-F-T3 taatacagactcactatAGGGCTTCGAGACTGCCAA  
43 JARID2-R-T7 attaaccctcactaaAGGGACCTCTTTTTGGTGTGG  
44  
45  
46  
47  
48  
49

50 Primers for exon sequencing (human)  
51

52 PrJARID2-1bisf AGAGGGGTGACCTCGGACTAC  
53 PrJARID2-1bisr AGAATGGTCCCCTTGATCTTCT  
54 PrJARID2-2bisf GACACGTCCAAGCGTTTGT  
55 PrJARID2-2bisr ACAAGTTAGGGCTCCTCGGATA  
56 PrJARID2-3f GAATTATCCGAGGAGCCCTAAC  
57 PrJARID2-3r CTGATTGCAAAAGGGGACAAT  
58 JARID2-1F ACAACAATAAAAACCACCAGGA  
59 JARID2-1R aacttgacattcacagccattg  
60 JARID2-2F ttgactctgaatattgccttgc  
JARID2-2R ccaattcaggaacaagtcca

1  
2  
3 JARID2-3F cgttggtgtaggggtaactgtgg  
4 JARID2-3R ggtgaaaactggcacctgag  
5 JARID2-4F attttattgccgcacgtagg  
6 JARID2-4R gggtggggacagaaaaatga  
7 JARID2-5F tcggttttgtttcattgtgg  
8 JARID2-5R cagcagaggctctcttccag  
9 JARID2-6F ccataatcagtagtttgcgtagg  
10 JARID2-6R tgggtgaagtgaagtgggaaa  
11 JARID2-7AF gtggggccgggtcatttttagt  
12 JARID2-7AR GCCGATTCTCTCCAGACT  
13 JARID2-7BF AGGCACACCAGGCGGAGAAGC  
14 JARID2-7BR AGGGAAGTGCAGGGATCTGGGG  
15 JARID2-8F caagaagtacagggttgaatgagga  
16 JARID2-8R gtgcatagcacgctccact  
17 JARID2-9F ctggcctcatttgcagtagg  
18 JARID2-9R cagggcaggacaggatgt  
19 JARID2-10/11F ttggggtgaaactgtgctctg  
20 JARID2-10/11R agccctgggttctcagcaag  
21 JARID2-12F acttactgttcctttgagaccttg  
22 JARID2-12R gccccacttcatgtggtaat  
23 JARID2-13F ggcccagtacatgcaggag  
24 JARID2-13R gggaaaccatggtcaagtgc  
25 JARID2-14F gtgcgcatagcgtcacctg  
26 JARID2-14R gcagggatgcttctgtgtg  
27 JARID2-15/16F ctgccccctccaccaagaa  
28 JARID2-15/16R agagagcgcctccctcttc  
29 JARID2-17F ttccagcatttccagtcctc  
30 JARID2-17R ccggagtgcctacatccag  
31 JARID2-18F cctaaacttgcccctgcat  
32 JARID2-18R GTTCAACAGTTTAATGCTAAAACAAA  
33  
34  
35  
36  
37  
38  
39  
40  
41

42 Primers for insertion/deletion polymorphism typing

43  
44 rs71932765F GCAGGAGAACCTGGTGGAAAT  
45 rs71932765R TCGGTTTTGTTTCATTGTGG  
46 rs34554301f cctgacaggagggtgtgtct  
47 rs34554301r AGCTCTGTATCCctgccaga  
48  
49  
50

51  
52 Primers for Transient expression of hybrid minigene

53  
54 6F gtagtttgcgtagtagtgg  
55 6R ctcatgcaaagggtgcgctc  
56 2-3alpha caacttcaagctcctaagccactgc  
57 B2 taggatccgggtcaccaggaagttgggttaaataca  
58  
59  
60

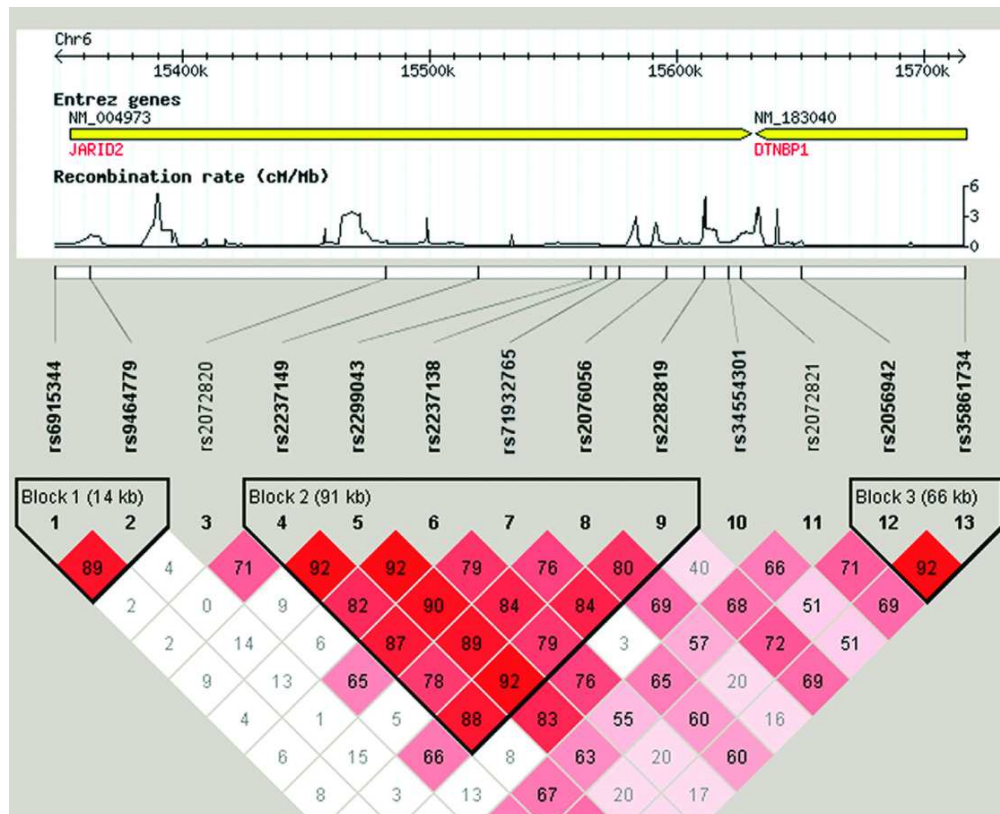


Fig 2  
47x38mm (600 x 600 DPI)

view

1  
2  
3  
4  
5  
6  
7  
8  
9  
10  
11  
12  
13  
14  
15  
16  
17  
18  
19  
20  
21  
22  
23  
24  
25  
26  
27  
28  
29  
30  
31  
32  
33  
34  
35  
36  
37  
38  
39  
40  
41  
42  
43  
44  
45  
46  
47  
48  
49  
50  
51  
52  
53  
54  
55  
56  
57  
58  
59  
60