



HAL
open science

Bone marrow involvement in mantle cell lymphoma

Kikkeri N Naresh, Sarah Hartley, Donald H Macdonald

► **To cite this version:**

Kikkeri N Naresh, Sarah Hartley, Donald H Macdonald. Bone marrow involvement in mantle cell lymphoma. American Journal of Hematology, 2010, 10.1002/ajh.21717 . hal-00552321

HAL Id: hal-00552321

<https://hal.science/hal-00552321>

Submitted on 6 Jan 2011

HAL is a multi-disciplinary open access archive for the deposit and dissemination of scientific research documents, whether they are published or not. The documents may come from teaching and research institutions in France or abroad, or from public or private research centers.

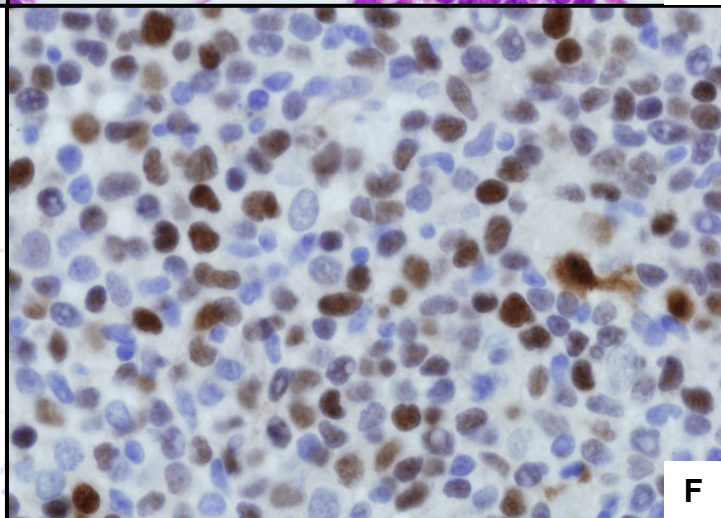
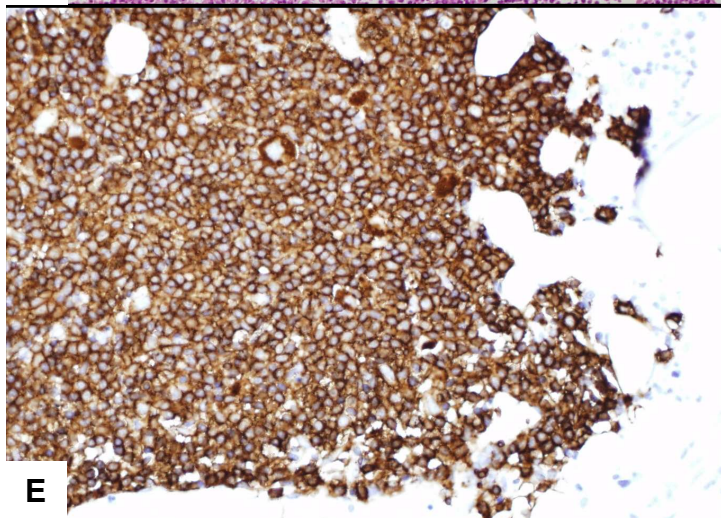
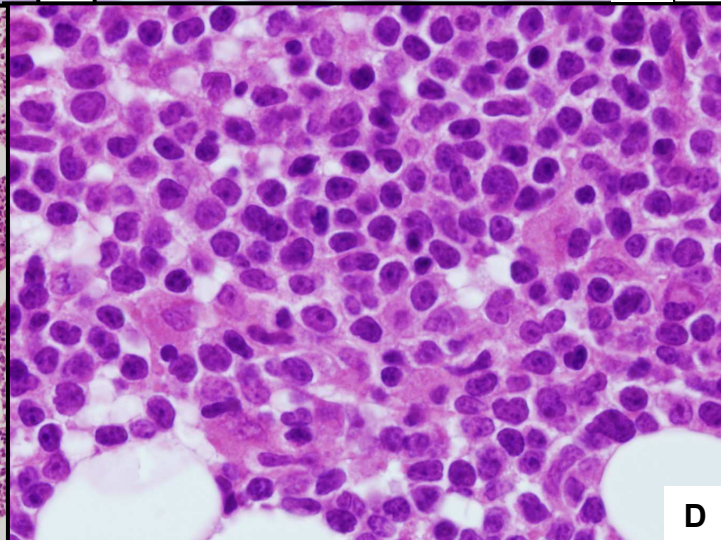
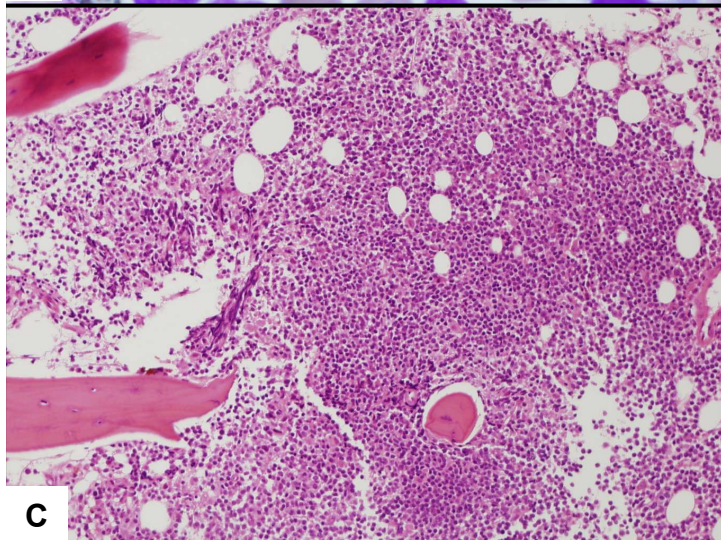
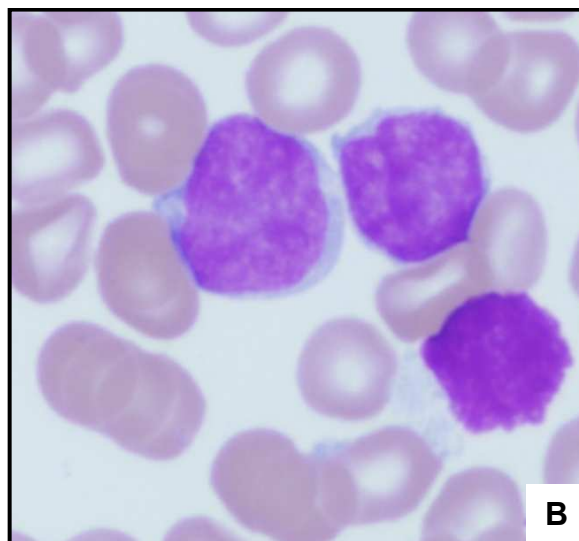
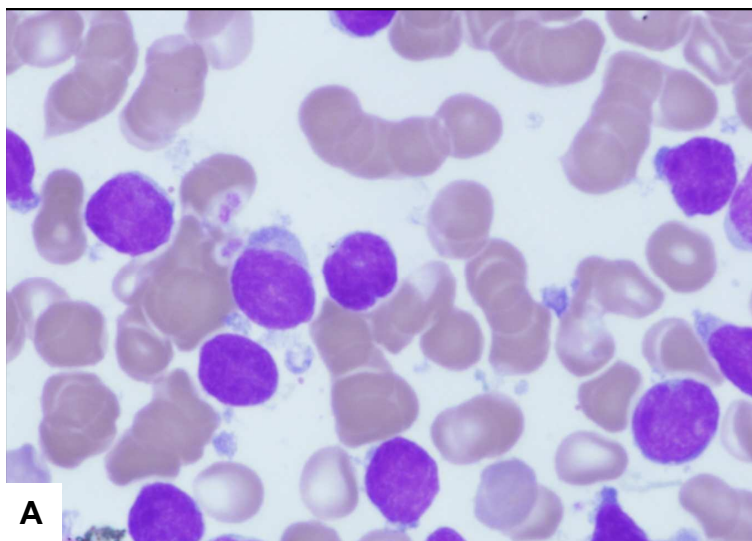
L'archive ouverte pluridisciplinaire **HAL**, est destinée au dépôt et à la diffusion de documents scientifiques de niveau recherche, publiés ou non, émanant des établissements d'enseignement et de recherche français ou étrangers, des laboratoires publics ou privés.



Bone marrow involvement in mantle cell lymphoma

| | |
|-------------------------------|---|
| Journal: | <i>American Journal of Hematology</i> |
| Manuscript ID: | AJH-10-0158 |
| Wiley - Manuscript type: | Bone Marrow Update |
| Date Submitted by the Author: | 09-Mar-2010 |
| Complete List of Authors: | Naresh, Kikkeri; Hammersmith Hospital & Imperial College, Histopathology Hartley, Sarah; Imperial College Healthcare NHS Trust, Haematology Macdonald, Donald; Imperial College Healthcare NHS Trust, Haematology |
| Keywords: | Mantle cell lymphoma |
| | |





A 68 year old man presented with generalized lymphadenopathy. Lymph node biopsy showed mantle cell lymphoma. Staging bone marrow aspirate showed >50% small lymphoid cells (Fig A & B - 100X objective). These cells had scanty weakly basophilic cytoplasm and minimally indented or cleaved nuclei. Bone marrow trephine biopsy section showed inter-trabecular nodular infiltrates and low-volume interstitial infiltrate of small cleaved lymphoid cells with coarse chromatin (Fig C - 10X objective; Fig D- 60X objective). The cells expressed CD20 (Fig E - 20X objective), cyclin D1 (Fig F- 20X objective), CD5 and BCL2. They were negative for CD3, CD23, CD10 and BCL6. The features are typical of mantle cell lymphoma.

Reference: Arber DA, George TI. Bone marrow biopsy involvement by non-Hodgkin's lymphoma: frequency of lymphoma types, patterns, blood involvement, and discordance with other sites in 450 specimens. *Am J Surg Pathol.* 2005 Dec;29(12):1549-57.