



HAL
open science

Peripheral blood and bone marrow morphology in adult T-cell leukaemia/lymphoma (ATLL)

Kikkeri N Naresh, Alexandra J Marks

► **To cite this version:**

Kikkeri N Naresh, Alexandra J Marks. Peripheral blood and bone marrow morphology in adult T-cell leukaemia/lymphoma (ATLL). *American Journal of Hematology*, 2010, 85 (7), pp.518. 10.1002/ajh.21716 . hal-00552320

HAL Id: hal-00552320

<https://hal.science/hal-00552320>

Submitted on 6 Jan 2011

HAL is a multi-disciplinary open access archive for the deposit and dissemination of scientific research documents, whether they are published or not. The documents may come from teaching and research institutions in France or abroad, or from public or private research centers.

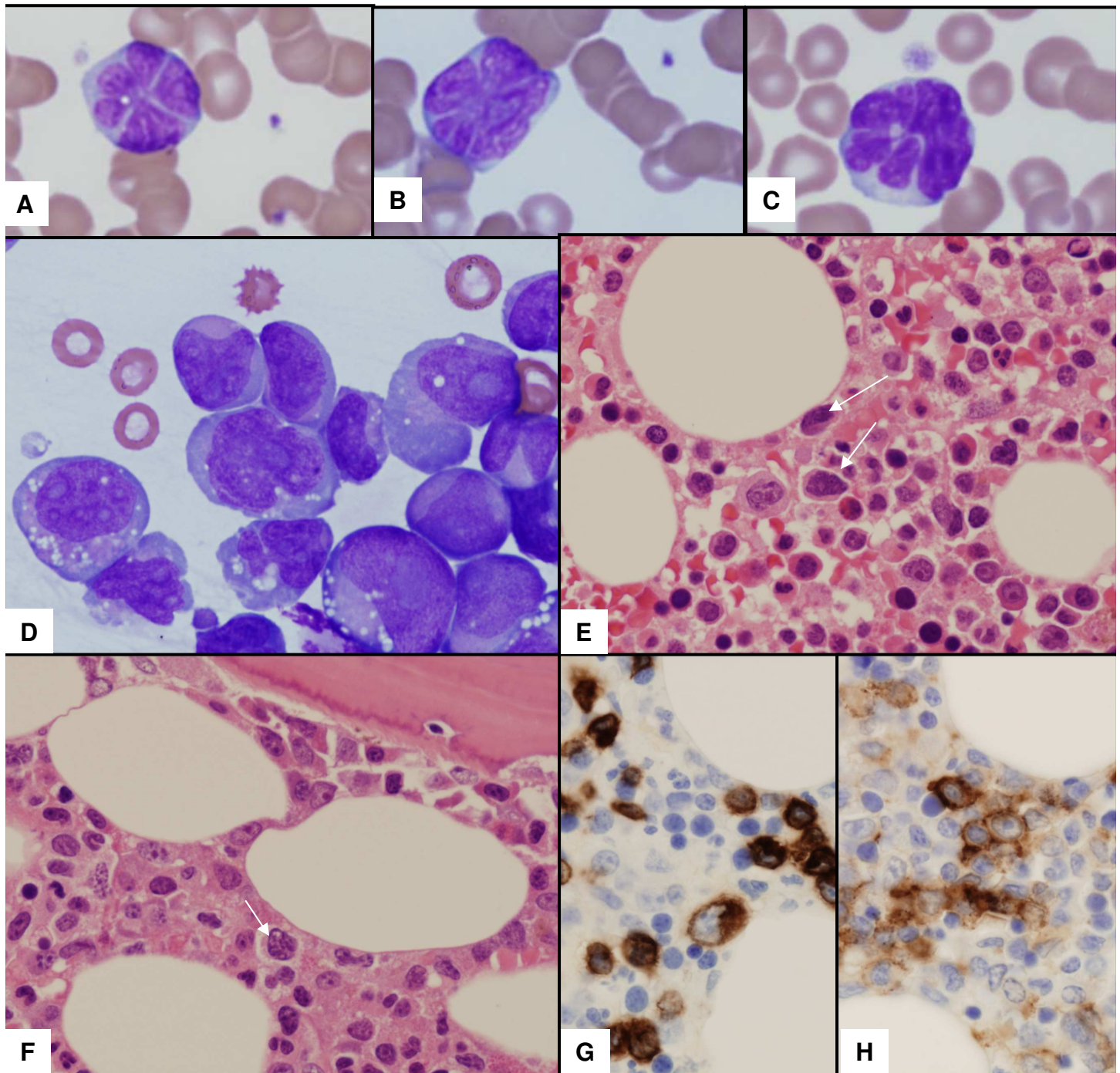
L'archive ouverte pluridisciplinaire **HAL**, est destinée au dépôt et à la diffusion de documents scientifiques de niveau recherche, publiés ou non, émanant des établissements d'enseignement et de recherche français ou étrangers, des laboratoires publics ou privés.



Peripheral blood and bone marrow morphology in adult T-cell leukaemia/lymphoma (ATLL)

Journal:	<i>American Journal of Hematology</i>
Manuscript ID:	AJH-10-0157
Wiley - Manuscript type:	Bone Marrow Update
Date Submitted by the Author:	09-Mar-2010
Complete List of Authors:	Naresh, Kikkeri; Hammersmith Hospital & Imperial College, Histopathology Marks, Alexandra; Imperial College Healthcare NHS Trust, Haematology
Keywords:	Adult T-cell leukaemia/lymphoma, ATLL





These are characteristic findings in peripheral blood film (PB), bone marrow aspirate (BMA) and bone marrow trephine biopsy (BMTB) sections in human T-cell lymphotropic virus 1 (HTLV-1) positive patient presenting with anaemia and hypercalcemia.

PB shows the cytological features of adult T-cell leukaemia/lymphoma (ATLL). These cells have weakly basophilic cytoplasm and the nuclei have deep indentations, and are often referred to as 'flower' cells (Fig A-C - 100X objective). BMA shows atypical lymphoid cells with many cells showing nucleoli and cytoplasmic vacuoles (Fig D - 100X objective). The BMTB section shows interstitially located intermediate to large sized atypical cells with relatively coarse chromatin and nuclear indentations (few highlighted with arrows) (Figs E & F - 60X objective). The tumour cells were positive for CD3 (Fig G; 60X objective), CD4 (Fig H - 60X objective), CD2, CD5 and CD25.

Reference: Ohshima K. Pathological features of diseases associated with human T-cell leukemia virus type I. *Cancer Sci.* 2007 Jun;98(6):772-8.