



The compensation approach for walks with small steps in the quarter plane

Ivo Adan, Johan van Leeuwaarden, Kilian Raschel

► To cite this version:

Ivo Adan, Johan van Leeuwaarden, Kilian Raschel. The compensation approach for walks with small steps in the quarter plane. 2011. hal-00551472v2

HAL Id: hal-00551472

<https://hal.science/hal-00551472v2>

Preprint submitted on 7 Oct 2012 (v2), last revised 4 Jul 2013 (v3)

HAL is a multi-disciplinary open access archive for the deposit and dissemination of scientific research documents, whether they are published or not. The documents may come from teaching and research institutions in France or abroad, or from public or private research centers.

L'archive ouverte pluridisciplinaire **HAL**, est destinée au dépôt et à la diffusion de documents scientifiques de niveau recherche, publiés ou non, émanant des établissements d'enseignement et de recherche français ou étrangers, des laboratoires publics ou privés.

The compensation approach for walks with small steps in the quarter plane

Ivo J.B.F. Adan^{*†} Johan S.H. van Leeuwaarden^{*‡} Kilian Raschel^{†‡}

July 10, 2012

Abstract

This paper is the first application of the compensation approach (a well-established theory in probability theory) to counting problems. We discuss how this method can be applied to a general class of walks in the quarter plane \mathbb{Z}_+^2 with a step set that is a subset of $\{(-1, 1), (-1, 0), (-1, -1), (0, -1), (1, -1)\}$ in the interior of \mathbb{Z}_+^2 . We derive an explicit expression for the generating function which turns out to be nonholonomic, and which can be used to obtain exact and asymptotic expressions for the counting numbers.

Keywords: lattice walks in the quarter plane, compensation approach, holonomic functions

AMS 2000 Subject Classification: 05A15, 05A16

1 Introduction

In the field of enumerative combinatorics, counting walks on a lattice is among the most classical topics. While counting problems have been largely resolved for unrestricted walks on \mathbb{Z}^2 , walks that are confined to the quarter plane \mathbb{Z}_+^2 still pose considerable challenges. In recent years, much progress has been made, in particular for walks in the quarter plane with small steps, which means that the step set \mathcal{S} is a subset of $\{(i, j) : |i|, |j| \leq 1\} \setminus \{(0, 0)\}$. Bousquet-Mélou and Mishna [7] constructed a thorough classification of these models. By definition, there are 2^8 such models, but after eliminating trivial cases and exploiting equivalences, it is shown in [7] that there are 79 inherently different problems that need to be studied. Let $q_{i,j,k}$ denote the number of paths in \mathbb{Z}_+^2 having length k , starting from $(0, 0)$ and ending in (i, j) , and define the generating function (GF) as

$$Q(x, y; z) = \sum_{i,j,k=0}^{\infty} q_{i,j,k} x^i y^j z^k. \quad (1)$$

There are then two key challenges:

- (i) Finding an explicit expression for $Q(x, y; z)$.

^{*}Department of Mathematics and Computer Science, Eindhoven University of Technology, P.O. Box 513, 5600 MB Eindhoven, The Netherlands

[†]CNRS and Université de Tours, Faculté des Sciences et Techniques, Parc de Grandmont, 37200 Tours, France

[‡]E-mails: i.j.b.f.adan@tue.nl, j.s.h.v.leeuwaarden@tue.nl, kilian.raschel@lmpt.univ-tours.fr

- (ii) Determining the nature of $Q(x, y, z)$: is it holonomic (the vector space over $\mathbb{C}(x, y, z)$ —the field of rational functions in the three variables x, y, z —spanned by the set of all derivatives of $Q(x, y, z)$ is finite dimensional, see [11, Appendix B.4])? And in that event, is it algebraic, or even rational?

The common approach to address these challenges is to start from a functional equation for the GF, which for the walks with small steps takes the form (see [7, Section 4])

$$K(x, y, z)Q(x, y, z) = A(x)Q(x, 0, z) + B(y)Q(0, y, z) - \delta Q(0, 0, z) - xy/z, \quad (2)$$

where K , A and B are polynomials of degree two in x and/or y , and δ is a constant. For $z = 1/|S|$, (2) belongs to the generic class of functional equations (arising in the probabilistic context of *random* walks) studied and solved in the book [8]. For general values of z , the analysis of (2) for the 79 above-mentioned models has been carried out in [13, 18], which settled Challenge (i).

In order to describe the results regarding Challenge (ii), it is worth to define the *group of the walk*, a notion introduced by Malyshev [15]. This is the group of birational transformations $W = \langle \xi, \eta \rangle$, with

$$\xi(x, y) = \left(x, \frac{1}{y} \frac{\sum_{(i,-1) \in S} x^i}{\sum_{(i,+1) \in S} x^i} \right), \quad \eta(x, y) = \left(\frac{1}{x} \frac{\sum_{(-1,j) \in S} y^j}{\sum_{(+1,j) \in S} y^j}, y \right), \quad (3)$$

which leaves invariant the function $\sum_{(i,j) \in S} x^i y^j$. Clearly, $\xi \circ \xi = \eta \circ \eta = \text{id}$, and W is a dihedral group of even order larger than or equal to four.

Challenge (ii) is now resolved for all 79 problems. It was first solved for the 23 models that have a finite group. The nature of the GF (as a function of the three variables x, y, z) was determined in [7] for 22 of these 23 models: 19 models turn out to have a GF that is holonomic but nonalgebraic, while 3 models have a GF that is algebraic. For the 23rd model, defined by $S = \{(-1, 0), (-1, -1), (1, 0), (1, 1)\}$ and known as *Gessel's walk*, it was proven in [5] that $Q(x, y, z)$ is algebraic. Alternative proofs for the nature of the GF for these 23 problems were given in [9]. For the remaining 56 models, which all have an infinite group, it was first shown that 5 of them (called singular) have a nonholonomic GF, see [16, 17]. Bousquet-Mélou and Mishna [7] have conjectured that the 51 other models also have a nonholonomic GF. Partial evidence was provided in [6, 18], and the proof was recently given in [14].

In this paper we consider walks on \mathbb{Z}_+^2 with small steps that do not fall into the class considered in [7]. The classification in [7] builds on the assumption that the steps on the boundaries are the same steps (if possible) as those in the interior. However, when the behavior on the boundaries is allowed to be different, we have many more models to consider. There are several motivations to permit arbitrary jumps on the boundary. First, this allows us to extend the existing results, and thus to have a better understanding of the combinatorics of the walks confined to a quarter plane. Second, some studies in probability theory (see e.g. [12]) suggest that the behavior of the walk on the boundary has a deep and interesting influence on the quantities of interest. In this paper we first consider the walk in Figure 1, with steps taken from $S = \{(-1, 1), (-1, -1), (1, -1)\}$ in the interior, $S_H = \{(-1, 1), (-1, 0), (1, 0)\}$ on the horizontal boundary, $S_V = \{(0, 1), (0, -1), (1, -1)\}$ on the vertical boundary, and $S_0 = \{(0, 1), (1, 0)\}$ in state $(0, 0)$.

Notice that the step set $S = \{(-1, 1), (-1, -1), (1, -1)\}$ in the framework of [7] would render a trivial walk, since the walk could never depart from state $(0, 0)$. However, by choosing the steps

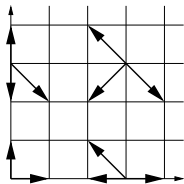


Figure 1: The jumps of the walk

on the boundaries as in \mathcal{S}_H , \mathcal{S}_V and \mathcal{S}_0 , it becomes possible to start walking from state $(0, 0)$, and we have a rather intricate counting problem on our hands.

It turns out that our walk has an infinite group. To see this, observe that the interior step set in Figure 1 and the one represented in Figure 2 have isomorphic groups ([7, Lemma 2] says that two step sets differing by one of the eight symmetries of the square have isomorphic groups), and notice that the group associated with the step set in Figure 2 is infinite ([7, Section 3.1]).

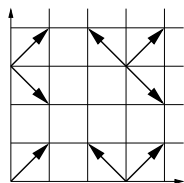


Figure 2: Walk considered in [17]

Since our walk has an infinite group, the approach in [7] cannot be applied. The methods developed in [17] also fail to work. Indeed, the main tool used there is an expression of $Q(x, 0; z)$ and $Q(0, y; z)$ as series involving the iterates of the roots of the kernel. While these series are convergent when the transitions $(-1, 0)$, $(-1, -1)$, $(0, -1)$ are absent, they become strongly divergent in our case, see [8, Chapter 6]. The approach via boundary value problems of [8] seems to apply, but this is more cumbersome than in [13, 18]. Indeed, contrary to the 79 models studied there, for which in (2), A and B depend on one variable, and δ is constant, these quantities are now polynomials in two variables, since the functional equation (2) for our walk becomes (for a proof, see Equations (12)–(17) in Section 2)

$$K(x, y; z)Q(x, y; z) = [1 + x^2 - x^2y - y]Q(x, 0; z) + [1 + y^2 - xy^2 - x]Q(0, y; z) + [x + y - 1]Q(0, 0; z) - xy/z \quad (4)$$

with the kernel

$$K(x, y; z) = 1 + x^2 + y^2 - xy/z. \quad (5)$$

We shall derive an explicit expression for $Q(x, y; z)$, which turns out to be a meromorphic function of x, y with infinitely many poles in x and in y . This implies that $Q(x, y; z)$ is nonholonomic as a function of x , and as a function of y . We note that for one variable, a function is holonomic if and only if it satisfies a linear differential equation with polynomial coefficients (see [11, Appendix B.4]), so that a holonomic function must have finitely many poles, since the latter are found among the zeros of the polynomial coefficients of the underlying differential equation. Accordingly, the trivariate function $Q(x, y; z)$ is nonholonomic as well, since the holonomy is stable by specialization

of a variable (see [11]). As in [14, 18], this paper therefore illustrates the intimate relation between the infinite group case and nonholonomy.

The technique we are using is the so-called *compensation approach*. This technique has been developed in a series of papers [1, 3, 4] in the probabilistic context of *random walks*; see [2] for an overview. It does not aim directly at obtaining a solution for the GF, but rather tries to find a solution for its coefficients

$$q_{i,j}(z) = \sum_{k=0}^{\infty} q_{i,j,k} z^k. \quad (6)$$

These coefficients satisfy certain recursion relations, which differ depending on whether the state (i, j) lies on the boundary or not. The idea is then to express $q_{i,j}(z)$ as a linear combination of products $\alpha^i \beta^j$, for pairs (α, β) such that

$$K(1/\alpha, 1/\beta; z) = 0. \quad (7)$$

By choosing only pairs (α, β) for which (7) is satisfied, the recursion relations for $q_{i,j}(z)$ in the interior of the quarter plane are satisfied by any linear combination of products $\alpha^i \beta^j$, by virtue of the linearity of the recursion relations. The products have to be chosen such that the recursion relations on the boundaries are satisfied as well. As it turns out, this can be done by alternatingly compensating for the errors on the two boundaries, which eventually leads to an infinite series of products.

This paper is organized as follows. In Section 2 we obtain an explicit expression for the generating function $Q(x, y; z)$ by applying the compensation approach. In Section 3 we derive an asymptotic expression for the coefficients $q_{i,j,k}$ for large values of k , using the technique of singularity analysis. Because this paper is the first application of the compensation approach to counting problems, we also shortly discuss in Section 4 for which classes of walks this compensation approach might work.

2 The compensation approach

We start from the following recursion relations:

$$q_{i,j,k+1} = q_{i-1,j+1,k} + q_{i+1,j-1,k} + q_{i+1,j+1,k}, \quad i, j \geq 1, k \geq 0, \quad (8)$$

$$q_{i,0,k+1} = q_{i-1,1,k} + q_{i+1,1,k} + q_{i-1,0,k} + q_{i+1,0,k}, \quad i \geq 1, k \geq 0, \quad (9)$$

$$q_{0,j,k+1} = q_{1,j-1,k} + q_{1,j+1,k} + q_{0,j-1,k} + q_{0,j+1,k}, \quad j \geq 1, k \geq 0, \quad (10)$$

$$q_{0,0,k+1} = q_{0,1,k} + q_{1,1,k} + q_{1,0,k}, \quad k \geq 0. \quad (11)$$

Since $q_{i,j,0} = 0$ if $i + j > 0$ and $q_{0,0,0} = 1$, these relations uniquely determine all the counting numbers $q_{i,j,k}$. Multiplying the relations (8)–(11) by z^k and summing w.r.t. $k \geq 0$ leads to (with the generating functions $q_{i,j} = q_{i,j}(z)$ defined in (6))

$$q_{i,j}/z = q_{i-1,j+1} + q_{i+1,j-1} + q_{i+1,j+1}, \quad i, j \geq 1, \quad (12)$$

$$q_{i,0}/z = q_{i-1,1} + q_{i+1,1} + q_{i-1,0} + q_{i+1,0}, \quad i \geq 2, \quad (13)$$

$$q_{0,j}/z = q_{1,j-1} + q_{1,j+1} + q_{0,j-1} + q_{0,j+1}, \quad j \geq 2, \quad (14)$$

and

$$q_{1,0}/z = q_{0,1} + q_{2,1} + q_{0,0} + q_{2,0}, \quad (15)$$

$$q_{0,1}/z = q_{1,0} + q_{1,2} + q_{0,0} + q_{0,2}, \quad (16)$$

$$q_{0,0}/z = 1/z + q_{0,1} + q_{1,1} + q_{1,0}. \quad (17)$$

(For a reason that will be clear below, we want to discuss separately the equations involving $q_{0,0}$, and we therefore do not merge (15) (resp. (16)) and (13) (resp. (14)).

Lemma 1. *Equations (12)–(17) have a unique solution in the form of formal power series.*

Proof. The generating function $q_{i,j}$ can be written as a Taylor series about $z = 0$. Substituting these Taylor series into Equations (12)–(17), and equating coefficients of z^k , yields Equations (8)–(11). The latter obviously have a unique solution for the coefficients $q_{i,j,k}$, because these counting numbers can be determined recursively using $q_{0,0,0} = 1$. \square

In order to find the unique solution for $q_{i,j}$, we shall employ the compensation approach, which consists of three steps:

- Characterize all products $\alpha^i \beta^j$ for which the inner equations (12) are satisfied, and construct linear combinations of these products, which in addition to being formal solutions to (12), also satisfy (13) and (14).
- Prove that these solutions are formal power series.
- Determine the complete unique solution $q_{i,j}$ by taking into account the boundary conditions (15)–(17).

2.1 Linear combinations of products

Substituting the product $\alpha^i \beta^j$ into the inner equations (12), and dividing by common powers, yields

$$\alpha\beta/z = \beta^2 + \alpha^2 + \alpha^2\beta^2. \quad (18)$$

Incidentally, note that (18) is nothing else but (7) (see (5)). Hence, a product $\alpha^i \beta^j$ is a solution of (12) if and only if (18) is satisfied, and any linear combination of such products will satisfy (12). Figure 3 depicts the curve (18) in \mathbb{R}_+^2 for $z = 1/4$.

Now we construct a linear combination of the products introduced above, which will give a formal solution to the equations (12)–(14). The first term of this combination, say $\alpha_0^i \beta_0^j$, we require to satisfy both (12) and (13). In other words, the pair (α_0, β_0) has to satisfy (18) as well as

$$\alpha\beta/z = \beta^2 + \alpha^2\beta^2 + \beta + \alpha^2\beta. \quad (19)$$

The motivation to start with a term satisfying both (18) and (19) will be explained at the end of this subsection, see Remark 5.

Lemma 2. *There exists a unique pair (α_0, β_0) , with*

$$\alpha_0 = \frac{1 - \sqrt{1 - 8z^2}}{4z}, \quad \beta_0 = \frac{\alpha_0^2}{1 + \alpha_0^2}, \quad (20)$$

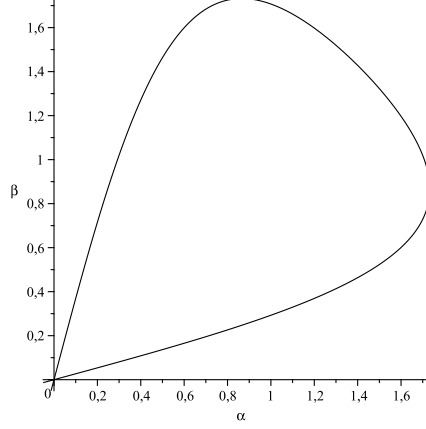


Figure 3: The curve (18) in \mathbb{R}_+^2 for $z = 1/4$.

of formal power series in z such that the product $\alpha_0^i \beta_0^j$ satisfies both (12) and (13).

Proof. Equation (19) yields

$$\alpha/z = \beta + \alpha^2\beta + 1 + \alpha^2 = (1 + \beta)(1 + \alpha^2). \quad (21)$$

Subtracting (19) from (18) gives $\beta(1 + \alpha^2) = \alpha^2$, so that $(1 + \beta)(1 + \alpha^2) = 1 + 2\alpha^2$, and together with (21) this gives $\alpha/z = 1 + 2\alpha^2$. The last equation has the two solutions $(1 \pm \sqrt{1 - 8z^2})/(4z)$, and only the solution with the $-$ sign is a formal power series in z . \square

The function $\alpha_0^i \beta_0^j$ thus satisfies (12) and (13), but it fails to satisfy (14). Indeed, if $\alpha^i \beta^j$ is a solution to (14), then (α, β) should satisfy

$$\alpha\beta/z = \alpha^2 + \alpha^2\beta^2 + \alpha + \alpha\beta^2, \quad (22)$$

and (α_0, β_0) is certainly not a solution to (22).

Now we start adding compensation terms. We consider $c_0\alpha_0^i\beta_0^j + d_1\alpha^i\beta^j$, where (α, β) satisfies (18) and is such that $c_0\alpha_0^i\beta_0^j + d_1\alpha^i\beta^j$ satisfies (14). The identity (14), which has to be true for any $j \geq 2$, forces us to take $\beta = \beta_0$. Then, thanks to (18), we see that α is the conjugate root of α_0 in (18). Denote this new root by α_1 . Hence, α_0 and α_1 are the two roots of Equation (18), where β is replaced by β_0 . In other words, α_0 and α_1 satisfy

$$(1 + \beta_0^2)\alpha^2 - (\beta_0/z)\alpha + \beta_0^2 = 0. \quad (23)$$

Due to the root-coefficient relationships, we obtain

$$\frac{\beta_0/z}{1 + \beta_0^2} = \alpha_0 + \alpha_1. \quad (24)$$

We now determine d_1 in terms of c_0 . Note that $c_0\alpha_0^i\beta_0^j + d_1\alpha_1^i\beta_0^j$ is a solution to (14) if and only if

$$(\beta_0/z)(c_0 + d_1) = (\alpha_0 c_0 + \alpha_1 d_1)(1 + \beta_0^2) + (c_0 + d_1)(1 + \beta_0^2). \quad (25)$$

The latter identity can be rewritten as

$$\frac{\beta_0/z}{1+\beta_0^2}(c_0+d_1) = (\alpha_0 c_0 + \alpha_1 d_1) + (c_0 + d_1), \quad (26)$$

and thus, using (24),

$$d_1 = -\frac{1-\alpha_1}{1-\alpha_0}c_0. \quad (27)$$

The series $c_0\alpha_0^i\beta_0^j + d_1\alpha_1^i\beta_0^j$ after one compensation step satisfies (12) and (14) for the interior and the vertical boundary. However, the compensation term $d_1\alpha_1^i\beta_0^j$ has generated a new error at the horizontal boundary. To compensate for this, we must add another compensation term, and so on. In this way, the compensation approach can be continued, which eventually leads to

$$x_{i,j} = \underbrace{c_0\alpha_0^i\beta_0^j}_{\text{V}} + \underbrace{d_1\alpha_1^i\beta_0^j}_{\text{H}} + \underbrace{c_1\alpha_1^i\beta_1^j}_{\text{V}} + \underbrace{d_2\alpha_2^i\beta_1^j}_{\text{H}} + c_2\alpha_2^i\beta_2^j + \dots \quad (28)$$

where, by construction and (18), for all $k \geq 0$ we have

$$\beta_k = f(\alpha_k), \quad \alpha_{k+1} = f(\beta_k), \quad f(t) = \frac{1 - \sqrt{1 - 4z^2(1+t^2)}}{2z(1+t^2)}t, \quad (29)$$

and the function $f(t)$ follows from (18). The construction is such that each term in (28) satisfies the equations in the interior of the state space, the sum of two terms with the same α satisfies the horizontal boundary conditions (H) and the sum of two terms with the same β satisfies the vertical boundary conditions (V). Hence $x_{i,j}$ satisfies all equations (12)–(14). See also Figure 4. Furthermore,

$$d_{k+1} = -\frac{1-\alpha_{k+1}}{1-\alpha_k}c_k, \quad c_{k+1} = -\frac{1-\beta_{k+1}}{1-\beta_k}d_{k+1}, \quad k \geq 0. \quad (30)$$

An easy calculation starting from (30) yields

$$d_{k+1} = -\frac{(1-\alpha_{k+1})(1-\beta_k)}{(1-\alpha_0)(1-\beta_0)}c_0, \quad c_{k+1} = \frac{(1-\beta_{k+1})(1-\alpha_{k+1})}{(1-\alpha_0)(1-\beta_0)}c_0, \quad k \geq 0, \quad (31)$$

so that choosing (arbitrarily) $c_0 = (1-\alpha_0)(1-\beta_0)$ finally gives

$$x_{i,j} = \sum_{k=0}^{\infty} (1-\beta_k)\beta_k^j [(1-\alpha_k)\alpha_k^i - (1-\alpha_{k+1})\alpha_{k+1}^i]. \quad (32)$$

By symmetry, we also obtain that $x_{j,i}$ is a formal solution to (12)–(14). This leaves to consider the solution for the states $(0,1)$, $(0,0)$ and $(1,0)$, i.e., the boundary conditions (15)–(17).

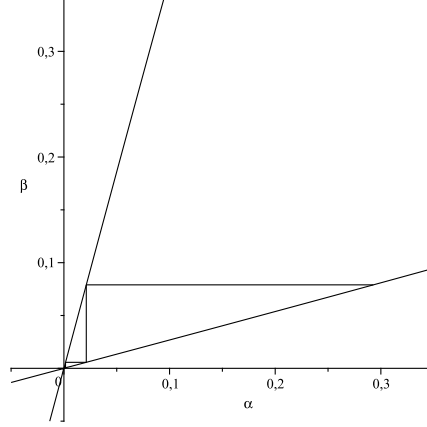


Figure 4: The curve (18) near 0 for $z = 1/4$, and the construction of the products.

2.2 Formal power series

Proposition 3. *The sequences $\{\alpha_k\}_{k \geq 0}$ and $\{\beta_k\}_{k \geq 0}$ appearing in (28)–(29) satisfy the following property: for all $k \geq 0$, $\alpha_k = z^{2k+1}\hat{\alpha}_k(z)$ and $\beta_k = z^{2k+2}\hat{\beta}_k(z)$, where $\hat{\alpha}_k$ and $\hat{\beta}_k$ are formal power series such that $\hat{\alpha}_k(0) = \hat{\beta}_k(0) = 1$.*

Proof. For f defined in (29), all $p \geq 0$, and all real numbers s_1, s_2, \dots ,

$$f(z^p[1 + s_1z + s_2z^2 + \dots]) = z^{p+1}[1 + s_1z + (1 + s_2)z^2 + \dots]. \quad (33)$$

Because (20) yields $\alpha_0 = z + 2z^3 + \dots$, the proof is completed via (29). \square

The following result is an immediate consequence of Proposition 3.

Corollary 4. *For $i, j \geq 0$, $x_{i,j}$ and $x_{j,i}$ defined in (32) are formal power series in z .*

Remark 5. The approach outlined in Subsection 2.1 is initialized with a term satisfying both (18) and (19). Alternatively, we could start with an arbitrarily chosen term with power series α_0 and β_0 satisfying (18) only. This term would violate (19) as well as (22), and therefore generate two sequences of terms, one starting with compensation of (19) and the other with (22). It is readily seen that in one of the two sequences, some of the parameters α or β will not be power series. Indeed, the two sequences of terms would be generated as in (29), with instead of f the function

$$f_{\pm}(t) = \frac{1 \pm \sqrt{1 - 4z^2(1 + t^2)}}{2z(1 + t^2)}t. \quad (34)$$

In Subsection 2.1, we already described the construction of the sequence with the choice $f_- = f$. For $f = f_+$, notice that for all $p \geq 0$, and all real numbers s_1, \dots , we have

$$f_+(z^p[1 + s_1z + \dots]) = z^{p-1}[1 + s_1z + \dots]. \quad (35)$$

Hence, the resulting solution constructed as in (29) would fail to be a formal power series, cf. Equation (32) and Subsection 2.3.

2.3 Determining the unique solution

We now determine the generating functions $q_{i,j}$. Define

$$\widehat{x}_{i,j} = x_{i,j} + x_{j,i}, \quad (36)$$

so that in particular

$$\widehat{x}_{0,0} = 2 \sum_{k=0}^{\infty} (1 - \beta_k)(\alpha_{k+1} - \alpha_k). \quad (37)$$

Proposition 6. *The expressions*

$$q_{0,0} = \frac{1 + \widehat{x}_{0,0}}{1 - 2z + z\widehat{x}_{0,0}} \quad (38)$$

and

$$q_{i,j} = c\widehat{x}_{i,j}, \quad i + j > 0, \quad (39)$$

with

$$c = \frac{1}{1 - 2z + z\widehat{x}_{0,0}}, \quad (40)$$

are the unique solutions to Equations (12)–(17) in the form of formal power series.

Proof. We shall look for a solution satisfying, for $i + j > 0$,

$$q_{i,j} = cx_{i,j} + \widetilde{c}x_{j,i}. \quad (41)$$

By symmetry we must have $c = \widetilde{c}$. Such combinations have been shown to satisfy (12)–(14), since they do not involve $q_{0,0}$. We should still determine the solution for which also the boundary conditions (15) and (17) (or by symmetry (16)) are satisfied. This can be achieved by choosing c and $q_{0,0}$ appropriately.

By using (17) and (15) (or (17) and (16)), we obtain that

$$c = \frac{z}{\widehat{x}_{1,0} - z[\widehat{x}_{0,1} + \widehat{x}_{2,1} + \widehat{x}_{2,0}] - z^2[\widehat{x}_{1,0} + \widehat{x}_{0,1} + \widehat{x}_{1,1}]} \quad (42)$$

and

$$q_{0,0} = 1 + zc[\widehat{x}_{0,1} + \widehat{x}_{1,1} + \widehat{x}_{1,0}]. \quad (43)$$

In addition, tedious calculations starting from (32) give

$$\widehat{x}_{1,0}/z - [\widehat{x}_{0,1} + \widehat{x}_{2,1} + \widehat{x}_{2,0} + \widehat{x}_{0,0}] = 1, \quad (1/z - 1)\widehat{x}_{0,0} + 2 - [\widehat{x}_{1,0} + \widehat{x}_{0,1} + \widehat{x}_{1,1}] = 0. \quad (44)$$

Thanks to the equations in (44), the denominator of (42) can be written as $z[1 - 2z + z\widehat{x}_{0,0}]$. The functions defined in (38) and (39) are the solutions to Equations (12)–(17) by construction. Finally, the uniqueness follows from Lemma 1. \square

Proposition 7.

$$\begin{aligned}
Q(x, y; z) &= \sum_{i,j=0}^{\infty} q_{i,j} x^i y^j \\
&= c + c \sum_{k=0}^{\infty} \left(\frac{1-\beta_k}{1-\beta_k y} \left[\frac{1-\alpha_k}{1-\alpha_k x} - \frac{1-\alpha_{k+1}}{1-\alpha_{k+1} x} \right] + \frac{1-\beta_k}{1-\beta_k x} \left[\frac{1-\alpha_k}{1-\alpha_k y} - \frac{1-\alpha_{k+1}}{1-\alpha_{k+1} y} \right] \right),
\end{aligned} \tag{45}$$

$$\tag{46}$$

with $q_{i,j}$ as in Proposition 6, c as in (40), and α_k and β_k as in (20) and (29), respectively. Furthermore,

$$Q(0, 0; z) = c(1 + \widehat{x}_{0,0}), \quad Q(1, 0; z) = Q(0, 1; z) = c(1 - \alpha_0(z)), \quad Q(1, 1; z) = c. \tag{47}$$

Proof. This is immediate from (32), (37)–(40). \square

Proposition 8. For all $0 < |z| < 1/3$, the functions $\sum_{i,j=0}^{\infty} q_{i,j} x^i y^j$, $\sum_{i=0}^{\infty} q_{i,0} x^i$ and $\sum_{j=0}^{\infty} q_{0,j} y^j$ have infinitely many poles.

Proof. This is a direct consequence of Propositions 3 and 7. \square

It follows immediately from Proposition 8 that both $\sum_{i=0}^{\infty} q_{i,0} x^i$ and $\sum_{j=0}^{\infty} q_{0,j} y^j$ are nonholonomic. The holonomy being maintained after specialization to a variable (see [11]), we reach the conclusion that the trivariate generating function $Q(x, y; z)$ is nonholonomic as well.

2.4 Retrieving coefficients

Now that we have an explicit expression for $q_{i,j}$, we briefly present an efficient procedure for calculating its coefficients $q_{i,j,k}$.

To compute $q_{i,j}$ we need to calculate in principle an infinite series, or to solve the recurrence relations. However, we shall prove that if we are only interested in a finite number of coefficients $q_{i,j,k}$, then it is enough to take into account a finite number of α_k and β_k . For $k \geq 0$, denote by $k \vee 1$ the maximum of k and 1. Define

$$N_p^{i,j} = 1 + \left\lfloor \frac{1}{4} \max\{p - (i \vee 1 + 2(j \vee 1)), p - (2(i \vee 1) + j \vee 1)\} \right\rfloor. \tag{48}$$

Proposition 9. For any $i, j \geq 0$, the first p coefficients of $q_{i,j}$ only require the series expansions of order p of $\alpha_0, \beta_0, \dots, \alpha_{N_p^{i,j}}, \beta_{N_p^{i,j}}$.

Proof. In order to obtain the series expansion of $q_{0,0}$ of order p , it is enough to know the series expansion of $\widehat{x}_{0,0}$ of order p , see (38). From (32) we obtain

$$\widehat{x}_{0,0} = 2 \sum_{k=0}^{\infty} (1 - \beta_k)(\alpha_{k+1} - \alpha_k) = -2\alpha_0 + 2 \sum_{k=0}^{\infty} \beta_k(\alpha_k - \alpha_{k+1}). \tag{49}$$

With Proposition 3, $\beta_k \alpha_k = O(z^{4k+3})$ and $\beta_k \alpha_{k+1} = O(z^{4k+5})$, so that in order to obtain the series expansion of $\widehat{x}_{0,0}$ of order p , it is enough to consider in (49) the values of k such that $4k+3 \leq p$. In other words, we have to deal with $\alpha_0, \beta_0, \dots, \alpha_k, \beta_k, \alpha_{k+1}$ for $4k+3 \leq p$. Since $N_p^{0,0} = 1 + \lfloor (p-3)/4 \rfloor$,

see (48), Proposition 9 is shown for $i = j = 0$. The proof for other values of i and j is similar and therefore omitted. \square

As an application of Proposition 9, let us find the numbers $q_{0,0,k}$ for $k \in \{0, \dots, 10\}$. Taking $i = j = 0$, we have $N_{10}^{0,0} = 2$; we then calculate the series expansions of order 10 of $\alpha_0, \beta_0, \alpha_1, \beta_1, \alpha_2, \beta_2$. After using (38) and (49), we obtain the numbers:

$$1, 0, 2, 2, 10, 16, 64, 126, 454, 1004, 3404. \quad (50)$$

3 Asymptotic analysis

In this section we derive an asymptotic expression for the coefficients $q_{i,j,k}$ for large values of k , using the technique of *singularity analysis* (see Flajolet and Sedgewick [11] for an elaborate exposition). This requires the investigation of the function $q_{i,j} = q_{i,j}(z)$ near its dominant singularity (closest to the origin) in the z -plane. First, notice that

$$\sum_{i,j=0}^{\infty} q_{i,j,k} \leq 3^k, \quad (51)$$

because there are at most 3^k paths of length k . This clearly implies that $q_{i,j,k} \leq 3^k$, so that $q_{i,j}$ is analytic at least for $|z| < 1/3$, and the singularities z of $q_{i,j}$ must satisfy $|z| \geq 1/3$.

In fact, the singularities of $q_{i,j}$ are given by the singularities of $\hat{x}_{i,j}$ and the zeros of the denominator of c in (40), see (38) and (39). In what follows, we first show in Subsection 3.1 that $\hat{x}_{i,j}$ converges in the domain $|z| \leq 1/\sqrt{8}$. We then find in Subsection 3.2 the first singularity of $q_{i,j}$. Finally, we state and prove our asymptotic results in Subsection 3.3.

3.1 Convergence of the solutions

Since $\hat{x}_{i,j}$ is constructed from the functions $\alpha_0, \beta_0, \alpha_1, \beta_1, \dots$, and since all these functions follow from the iterative scheme (29), i.e., from α_0 , it is clear that the singularities of $\hat{x}_{i,j}$ are in fact the singularities of α_0 , namely (see (20))

$$z = \pm \frac{1}{\sqrt{8}}. \quad (52)$$

Further, we have that:

Proposition 10. *The sequences $\{\alpha_k\}_{k \geq 0}$ and $\{\beta_k\}_{k \geq 0}$ appearing in (28)–(29) satisfy the following properties:*

- (i) *For all $|z| \leq 1/\sqrt{8}$, we have $1/\sqrt{2} \geq |\alpha_0| > |\beta_0| > |\alpha_1| > |\beta_1| > \dots$.*
- (ii) *For all $|z| \leq 1/\sqrt{8}$ and all $k \geq 0$, we have $|\alpha_k| \leq 1/\sqrt{2}^{2k+1}$ and $|\beta_k| \leq 1/\sqrt{2}^{2k+2}$.*

Before starting with the proof of Proposition 10, let us recall Rouché's theorem (see e.g. [11, Chapter 4]).

Theorem 11 (Rouché's theorem). *Let the functions F and G be analytic in a simply connected domain of \mathbb{C} containing in its interior the closed simple curve γ . Assume that F and G satisfy*

$|F(r) - G(r)| < |G(r)|$ for r on the curve γ . Then F and G have the same number of zeros inside the interior domain delimited by γ .

Proof of Proposition 10. To show (i) and (ii), it is enough, thanks to (29) and since $\alpha_0 = f(1)$, to prove that for all $|t| \leq 1$ and $|z| \leq 1/\sqrt{8}$,

$$|f(t)| \leq \frac{|t|}{\sqrt{2}}. \quad (53)$$

In order to show (53), we first note that f satisfies the algebraic equation $(1+t^2)f(t)^2 - tf(t)/z + t^2 = 0$, see (18) and (29). As a consequence, the function $f(t)/t$ is such that (with $r = f(t)/t$)

$$(1+t^2)r^2 - r/z + 1 = 0. \quad (54)$$

Let us now fix $|t| \leq 1$, $|z| < 1/\sqrt{8}$, and introduce the functions

$$F(r) = (1+t^2)r^2 - r/z + 1, \quad G(r) = -r/z + 1. \quad (55)$$

We have

$$|F(r) - G(r)| = |(1+t^2)r^2| \leq 2|r|^2, \quad |G(r)| = |-r/z + 1| \geq |r|/|z| - 1. \quad (56)$$

Further, a straightforward computation gives that for any

$$\frac{1 - \sqrt{1 - 8|z|^2}}{4|z|} < r_z < \frac{1 + \sqrt{1 - 8|z|^2}}{4|z|} \quad (57)$$

we have, for all $|r| = r_z$,

$$2|r|^2 < |r|/|z| - 1. \quad (58)$$

It then follows from Rouché's theorem, applied to the circle with radius r_z , that (54) has one unique solution $r = f(t)/t$ with $|r| < r_z$. By a continuity argument, we deduce that for all $|t| \leq 1$ and all $|z| < 1/\sqrt{8}$,

$$\frac{|f(t)|}{|t|} \leq \frac{1 - \sqrt{1 - 8|z|^2}}{4|z|}. \quad (59)$$

Equation (53) and Proposition 10 follow immediately. \square

Corollary 12. For $i, j \geq 0$, $x_{i,j}$ and $x_{j,i}$ defined in (32) are convergent for $|z| \leq 1/\sqrt{8}$. Further, for each $|z| \leq 1/\sqrt{8}$,

$$\sum_{i,j=0}^{\infty} |x_{i,j}(z)| < \infty. \quad (60)$$

Proof. The first statement in Corollary 12 immediately follows from Proposition 10 and from the expression for $x_{i,j}$. Next, use (32) to get that for $i + j > 0$,

$$|x_{i,j}| \leq \sum_{k=0}^{\infty} |1 - \beta_k| |\beta_k|^j [|1 - \alpha_k| |\alpha_k|^i + |1 - \alpha_{k+1}| |\alpha_{k+1}|^i]. \quad (61)$$

Using then that $|1 - \beta_k|$, $|1 - \alpha_k|$ and $|1 - \alpha_{k+1}|$ are bounded, see Proposition 10(i), and applying Proposition 10(ii) gives that there is some constant constant $C > 0$ such that for all $i + j > 0$,

$$|x_{i,j}| \leq C \sum_{k=0}^{\infty} 1/\sqrt{2}^{(2k+1)i+(2k+2)j}. \quad (62)$$

Likewise, we can prove that for some constant $C > 0$,

$$|x_{0,0}| \leq C \sum_{k=0}^{\infty} 1/\sqrt{2}^{(2k+1)}. \quad (63)$$

The second claim in Corollary 12 immediately follows. \square

3.2 Dominant singularity of $q_{i,j}$

A consequence of the results in Subsection 3.1 is that $q_{i,j}$ is analytic for $|z| < 1/\sqrt{8}$, except possibly at points z such that the denominator of c in (40) equals 0. Denote this denominator by

$$h(z) = 1 - 2z + z\hat{x}_{0,0}, \quad (64)$$

and let ρ denote the dominant singularity of c .

Lemma 13. *The series $h(z)$ has a unique root in the interval $(1/3, 1/\sqrt{8})$, which is the dominant singularity ρ of c .*

The proof of Lemma 13 is presented in Appendix A. Furthermore, in Corollary 22 we shall prove that $\rho \in [0.34499975, 0.34499976]$

Remark 14. It seems hard to find a closed-form expression for ρ or to decide whether ρ is algebraic or not. From this point of view, the situation is quite different from that for the 74 (nonsingular) models of walks discussed in Section 1. Indeed, for all these 74 models, the analogue of ρ (which eventually will be the first positive singularity of $Q(0, 0; z)$, $Q(1, 0; z)$, $Q(0, 1; z)$ and $Q(1, 1; z)$, see below) is always algebraic (of some degree between 1 and 7), see [10].

3.3 Asymptotic results

Here are our main results on the asymptotic behavior of large counting numbers:

Proposition 15. *The asymptotics of the numbers of walks $q_{i,j,k}$ as $k \rightarrow \infty$ is*

$$q_{i,j,k} \sim C_{i,j} \rho^{-k}, \quad (65)$$

with ρ as defined in Lemma 13,

$$C_{0,0} = \frac{3\rho - 1}{-\rho^2 h'(\rho)}, \quad (66)$$

and

$$C_{i,j} = \frac{\hat{x}_{i,j}(\rho)}{-\rho h'(\rho)}, \quad i + j \geq 1. \quad (67)$$

Proof. Consider first the case $i = j = 0$. Thanks to (38), (64) and Lemma 13, we obtain that $q_{0,0}$ has a pole at ρ , and is holomorphic within the domain

$$\{z \in \mathbb{C} : |z| < (1 + \epsilon)\rho\} \setminus [\rho, (1 + \epsilon)\rho] \quad (68)$$

for any $\epsilon > 0$ small enough. Moreover, the pole of $q_{0,0}$ at ρ is of order one, as we show now. For this it is sufficient to prove that $1 + \hat{x}_{0,0}(\rho) \neq 0$ and that $h'(\rho) \neq 0$, see again (38) and (64). In this respect, note that with (64) and Lemma 13 we have $h(\rho) = 1 - 2\rho + \rho\hat{x}_{0,0}(\rho) = 0$, so that $1 + \hat{x}_{0,0}(\rho) = (3\rho - 1)/\rho$, which is positive by Lemma 13. On the other hand, it is a consequence of Lemma 23 that $h'(\rho) \neq 0$. In particular, the behavior of $q_{0,0}$ near ρ is given by

$$q_{0,0} = \frac{1 + \hat{x}_{0,0}(\rho)}{h'(\rho)(z - \rho)[1 + O(z - \rho)]} = \frac{3\rho - 1}{-\rho^2 h'(\rho)(1 - z/\rho)}[1 + O(z - \rho)]. \quad (69)$$

The holomorphy of $q_{0,0}$ within the domain (68) and the behavior (69) of $q_{0,0}$ near ρ immediately give the asymptotics (65) for $i = j = 0$ (see e.g. [11]). The proof for other values of i and j is similar and therefore omitted. \square

A result similar to Proposition 15 also holds for the total number of walks of length k (not necessarily ending in state $(0, 0)$). Indeed, from formula (47), we obtain that

$$Q(1, 0; z) = \frac{1 - \alpha_0(z)}{h(z)}, \quad Q(1, 1; z) = \frac{1}{h(z)}, \quad (70)$$

with $h(z)$ as in (64). Accordingly, the exponential growth rate of these generating functions is the same as that of $Q(0, 0; z)$, namely ρ (defined in Lemma 13). An identical reasoning as in the proof of Proposition 15 then gives the following result.

Proposition 16. *The asymptotics of the total number of walks $\sum_{i,j=0}^{\infty} q_{i,j,k}$ as $k \rightarrow \infty$ is*

$$\sum_{i,j=0}^{\infty} q_{i,j,k} \sim \frac{1}{-\rho h'(\rho)} \rho^{-k}. \quad (71)$$

The asymptotics of the total number of walks ending on the horizontal axis (or, equivalently, on the vertical axis) $\sum_{i=0}^{\infty} q_{i,0,k}$ as $k \rightarrow \infty$ is

$$\sum_{i=0}^{\infty} q_{i,0,k} \sim \frac{1 - \alpha_0(\rho)}{-\rho h'(\rho)} \rho^{-k}. \quad (72)$$

Remark 17. A priori, the fact that

$$Q(0, 0; z), \quad Q(1, 0; z), \quad Q(0, 1; z), \quad Q(1, 1; z) \quad (73)$$

have the same first positive singularity (namely, ρ) is far from obvious. This appears to be related to the fact that the two coordinates of the drift vector of our \mathcal{S} are negative (they both equal -2). Here, for any step set \mathcal{S} , the drift vector is given by $(\sum_{-1 \leq i \leq 1} \delta_{i,j}^{\mathcal{S}}, \sum_{-1 \leq j \leq 1} \delta_{i,j}^{\mathcal{S}})$, where $\delta_{i,j}^{\mathcal{S}} = 1$ if $(i, j) \in \mathcal{S}$, and 0 otherwise. Indeed, the following phenomenon has been observed in [10] for the

79 models of walks mentioned in Section 1: if the two coordinates of the drift vector are negative, then the four functions (73) do have the same first positive singularity.

Let us illustrate Proposition 15 with the following table, obtained by approximating ρ by 0.34499975 and $C_{0,0}$ by 0.0531, see Corollary 22 and Lemma 23 in Appendix A.

Value of k	Exact value of $q_{0,0,k}$ (see Section 2.4)	Approximation of $q_{0,0,k}$ (see Proposition 15)	Ratio
10	$3.404 \cdot 10^3$	$2.222 \cdot 10^3$	0.653
20	$1.106 \cdot 10^8$	$9.305 \cdot 10^7$	0.840
30	$4.254 \cdot 10^{12}$	$3.895 \cdot 10^{12}$	0.915
40	$1.714 \cdot 10^{17}$	$1.630 \cdot 10^{17}$	0.951
50	$7.037 \cdot 10^{21}$	$6.825 \cdot 10^{21}$	0.969
60	$2.913 \cdot 10^{26}$	$2.857 \cdot 10^{26}$	0.980
70	$1.211 \cdot 10^{31}$	$1.196 \cdot 10^{31}$	0.987
80	$5.051 \cdot 10^{35}$	$5.007 \cdot 10^{35}$	0.991
90	$2.109 \cdot 10^{40}$	$2.096 \cdot 10^{40}$	0.993
100	$8.814 \cdot 10^{44}$	$8.774 \cdot 10^{44}$	0.995

4 Discussion

4.1 A wider range of applicability

The compensation approach for our counting problem leads to an exact expression for the generating function $Q(x, y; z)$. A detailed exposition of the compensation approach can be found in [1, 3, 4], in which it has been shown to work for two-dimensional random walks on the lattice of the first quadrant that obey the following conditions:

- Step size: Only transitions to neighboring states.
- Forbidden steps: No transitions from interior states to the North, North-East, and East.
- Homogeneity: The same transitions occur for all interior points, and similarly for all points on the horizontal boundary, and for all points on the vertical boundary.

Although the theory has been developed for the *bivariate* transform of stationary distributions of recurrent two-dimensional random walks, this paper shows that it can also be applied to obtain a series expression for the *trivariate* function $Q(x, y; z)$. The fact that $Q(x, y; z)$ has one additional variable does not seem to matter much. We therefore expect that the compensation approach will work for walks in the quarter plane that obey the three conditions mentioned above. This will be a topic for future research. Another topic is to see whether the above conditions can be relaxed, and in fact, in the next section we present an example of a walk, not satisfying these properties, yet amenable to the compensation approach.

4.2 Another example

We consider the walk with $\mathcal{S} = \{(-1, 0), (-1, -1), (0, -1), (1, -1), (1, 0)\}$ in the interior, $\mathcal{S}_H = \{(-1, 0), (1, 0)\}$ on the horizontal boundary, $\mathcal{S}_V = \{(0, 1), (0, -1), (1, -1), (1, 0)\}$ on the vertical

boundary, and $\mathcal{S}_0 = \{(0, 1), (1, 0)\}$; see the left display in Figure 5. This walk has a rather special behavior, as it can only move upwards on the vertical boundary. By simple enumeration, we get the following recursion relations:

$$q_{i,j}/z = q_{i-1,j} + q_{i-1,j+1} + q_{i,j+1} + q_{i+1,j} + q_{i+1,j+1}, \quad i, j > 0, \quad (74)$$

$$q_{i,0}/z = q_{i-1,0} + q_{i-1,1} + q_{i,1} + q_{i+1,0} + q_{i+1,1}, \quad i > 0, \quad (75)$$

$$q_{0,j}/z = q_{0,j-1} + q_{0,j+1} + q_{1,j} + q_{1,j+1}, \quad j > 0, \quad (76)$$

$$q_{0,0}/z = 1/z + q_{0,1} + q_{1,1} + q_{1,0}. \quad (77)$$

Proposition 18. *The unique solution to Equations (74)–(77) is given by $q_{i,j} = c_0 \alpha_0^i \beta_0^j$, with β_0 defined as the unique formal power series in z and solving*

$$\beta/z = 1 + \beta^2 + \beta^2(1 + \beta)^2, \quad (78)$$

$\alpha_0 = \beta_0(1 + \beta_0)$ and $c_0 = \beta_0/z$. Therefore, the GF is algebraic (and even rational in x, y) and given by

$$Q(x, y; z) = \sum_{i,j,k=0}^{\infty} q_{i,j,k} x^i y^j z^k = \frac{c_0}{(1 - \alpha_0 x)(1 - \beta_0 y)}. \quad (79)$$

Proof. Let us first construct all pairs (α, β) such that $c\alpha^i\beta^j$ solves (74), (75) and (76). We obtain that α and β must satisfy

$$\alpha\beta/z = \beta + \beta^2 + \alpha\beta^2 + \alpha^2\beta + \alpha^2\beta^2, \quad (80)$$

$$\alpha\beta/z = \alpha + \alpha\beta^2 + \alpha^2\beta + \alpha^2\beta^2. \quad (81)$$

(Note that the reason why we obtain two and not three equations is that Equation (75) gives exactly the same information as (74).) Further, all pairs (α, β) that satisfy both (80) and (81) are such that $\beta(1 + \beta) = \alpha$. Substituting the latter into (80) gives (78). Denote by β_k , $k \in \{0, \dots, 3\}$, the four roots of (78). Among the β_k , only one, say β_0 , is a unique formal power series in z , see [20, Proposition 6.1.8]. Letting

$$\alpha_0 = \beta_0(1 + \beta_0), \quad (82)$$

we conclude that for any c_0 , $c_0 \alpha_0^i \beta_0^j$ is a solution to (74), (75) and (76). With the particular choice $c_0 = 1/[1 - z(\alpha_0 + \alpha_0\beta_0 + \beta_0)]$, $c_0 \alpha_0^i \beta_0^j$ is also solution to (77). By uniqueness of the solution to the recursion relations (see Lemma 1), we conclude that $q_{i,j} = c_0 \alpha_0^i \beta_0^j$. Finally, by (78) and (82), we can simplify c_0 into β_0/z . \square



Figure 5: Two walks with different boundary behavior

We now modify the boundary behavior of this walk and we show that this has severe consequences for the GF. Consider again the walk with $\mathcal{S} = \{(-1, 0), (-1, -1), (0, -1), (1, -1), (1, 0)\}$ in the interior, but this time with $\mathcal{S}_V = \{(0, -1), (1, -1), (1, 0)\}$ on the vertical boundary, $\mathcal{S}_0 = \{(1, 0)\}$, and the following rather special step set on the horizontal boundary: if the walk is in state $(i, 0)$ with $i > 0$, the possible steps are $\{(-1, 0), (1, 0)\}$ and a *big* step to $(0, i)$; see the right display in Figure 5. We should note that a *random* walk, with similar unusual boundary behavior, has already been considered in [19]. The equations for $q_{i,j}$ are then given by (74), (75), (77) and

$$q_{0,j}/z = q_{j,0} + q_{0,j+1} + q_{1,j} + q_{1,j+1}, \quad j > 0. \quad (83)$$

Proposition 19. *Let*

$$g(t) = \frac{1 - tz - \sqrt{(1 - tz)^2 - 4z^2(1 + t)^2}}{2z(1 + t)}, \quad (84)$$

$\beta_0 = 0$, and define c_0 by

$$1/c_0 = \sum_{k=0}^{\infty} \frac{\beta_2 \cdots \beta_{k+1}}{(1 + \beta_1) \cdots (1 + \beta_k)} [1 - z(\beta_k + \beta_{k+1} + \beta_k \beta_{k+1})] \quad (85)$$

with

$$\beta_{k+1} = \alpha_k, \quad \alpha_{k+1} = g(\beta_{k+1}), \quad c_{k+1} = c_k \frac{\alpha_{k+1}}{1 + \beta_{k+1}}, \quad k \geq 0. \quad (86)$$

The unique solution to Equations (74), (75), (77) and (83) is given by

$$q_{i,j} = \sum_{k=0}^{\infty} c_k \alpha_k^i \beta_k^j. \quad (87)$$

Therefore, the GF is given by

$$Q(x, y; z) = \sum_{k=0}^{\infty} \frac{c_k}{(1 - \alpha_k x)(1 - \beta_k y)}, \quad (88)$$

which has infinitely many poles in x and y , and is therefore nonholonomic as a trivariate function.

Proof. Let us first notice that compared to Section 2, there is here a main novelty in the application of the compensation approach: it comes from the fact that Equation (74) for the interior and Equation (75) for the horizontal boundary are exactly similar. Accordingly, the compensation terms will appear by repeatedly considering Equation (76) for the vertical boundary only.

We start from the product $q_{i,j} = c\alpha^i\beta^j$. The pairs (α, β) that satisfy the inner equations (74) are characterized by $\alpha = g(\beta)$ with g as in (84). (It is worth mentioning that a priori, we have two possibilities for g : one as in (84), and another with a sign $+$ in front of the square root. We have to choose (84) because otherwise, the α_k and β_k in (86) would not be power series.) Substituting $c\alpha^i\beta^j$ into (83) yields

$$c\alpha^j = c\beta^j(1/z - \alpha - \beta - \alpha\beta). \quad (89)$$

This suggests to set $\beta_0 = 0$, as otherwise (89) does not hold. (It is worth noting that this choice of β_0 is less canonical than the choice we made in Lemma 2. However, if we are able to construct a solution to the recursion relations (74), (75), (77) and (83) with this particular choice, then by

uniqueness of the solution, it will be the only one, see Lemma 1.) Consider thus the product $c_0\alpha_0^i\beta_0^j$, with $\beta_0 = 0$ and $\alpha_0 = g(\beta_0)$, for which (89) becomes

$$c_0\alpha_0^j = 0. \quad (90)$$

We then conclude that $c_0\alpha_0^i\beta_0^j$ does not satisfy (83) and to correct for the error, we add a second product $c_1\alpha_1^i\beta_1^j$, with (α_1, β_1) on the curve $\alpha = g(\beta)$, in such a way that the term $c_1\alpha_1^i\beta_1^j$ appears on the right-hand side of (90). This yields

$$c_0\alpha_0^j = c_1\beta_1^j(1/z - \alpha - \beta - \alpha\beta), \quad (91)$$

which gives

$$\beta_1 = \alpha_0, \quad \alpha_1 = g(\beta_1), \quad c_1 = c_0 \frac{1}{1/z - \alpha_1 - \beta_1 - \alpha_1\beta_1} = c_0 \frac{\alpha_1}{1 + \beta_1}, \quad (92)$$

where the last equality follows from (74). By adding the second product, we also obtain an extra term $c_1\alpha_1^j$ on the left-hand side of (91). That is why we add a third product $c_2\alpha_2^i\beta_2^j$, with (α_2, β_2) on the curve $\alpha = g(\beta)$, and via similar reasoning,

$$\beta_2 = \alpha_1, \quad \alpha_2 = g(\beta_2), \quad c_2 = c_1 \frac{\alpha_2}{1 + \beta_2}. \quad (93)$$

Continuing this procedure means that we keep adding products $c_k\alpha_k^i\beta_k^j$, with c_k , α_k and β_k as in (86), so that (87) is a formal solution to Equations (74), (77) and (83).

We now find c_0 . With (86), that we have proved above, we obtain

$$\frac{c_k}{c_0} = \frac{\beta_2 \cdots \beta_{k+1}}{(1 + \beta_1) \cdots (1 + \beta_k)}, \quad k \geq 0. \quad (94)$$

Further, with (77) we have

$$\frac{c_0}{z} \sum_{k=0}^{\infty} \frac{c_k}{c_0} = \frac{1}{z} + c_0 \sum_{k=0}^{\infty} \frac{c_k}{c_0} (\alpha_k + \beta_k + \alpha_k\beta_k). \quad (95)$$

Together with (86), we obtain (85). The α_k and β_k converge to the unique formal power series β_* solution to $g(\beta_*) = \beta_*$. Using (84), we obtain that

$$\beta_*^3 + 2\beta_*^2 + \beta_*(1 - 1/z) + 1 = 0. \quad (96)$$

The series β_* is such that $\beta_*(0) = 0$. It remains to show that $q_{i,j}$ defined in (87) is a (well-defined) formal power series. There is here an interesting phenomenon: for the general compensation approach of Section 2, $q_{i,j}$ was a formal power series because $\alpha_k = z^{2k+1}\hat{\alpha}_k$ and $\beta_k = z^{2k+2}\hat{\beta}_k$, where $\hat{\alpha}_k$ and $\hat{\beta}_k$ are formal power series (see Proposition 3). But here, we have $\alpha_k = z\hat{\alpha}_k$ and $\beta_k = z\hat{\beta}_k$, where $\hat{\alpha}_k$ and $\hat{\beta}_k$ are formal power series not vanishing at 0 (this follows from (84) and (86)). On the other hand, we have $c_k = z^k\hat{c}_k$, where \hat{c}_k is a formal power series. Therefore, in the particular case of Proposition 19, $q_{i,j}$ is a formal power series thanks to the constants c_k (see (86) and (87)). The nonholonomy of the trivariate function $Q(x, y; z)$ follows by the same arguments as

that given below Proposition 8. □

Acknowledgments. The work of Johan S.H. van Leeuwen was supported by an ERC Starting Grant. Kilian Raschel would like to thank EURANDOM for providing wonderful working conditions during two visits in the year 2010. His work was partially supported by CRC 701, Spectral Structures and Topological Methods in Mathematics at the University of Bielefeld. The authors thank an anonymous referee for numerous valuable and constructive comments.

References

- [1] I.J.B.F. Adan. *A Compensation Approach for Queueing Problems*. PhD dissertation, Technische Universiteit Eindhoven, Eindhoven, 1991.
- [2] I.J.B.F. Adan, O.J. Boxma, and J. Resing. Queueing models with multiple waiting lines. *Queueing Syst.*, 37:65–98, 2001.
- [3] I.J.B.F. Adan, J. Wessels, and W.H.M. Zijm. Analysis of the symmetric shortest queue problem. *Comm. Statist. Stochastic Models*, 6:691–713, 1990.
- [4] I.J.B.F. Adan, J. Wessels, and W.H.M. Zijm. A compensation approach for two-dimensional Markov processes. *Adv. in Appl. Probab.*, 25:783–817, 1993.
- [5] A. Bostan, and M. Kauers. The complete generating function for Gessel’s walk is algebraic. *Proc. Amer. Math. Soc.*, 432:3063–3078, 2010.
- [6] A. Bostan, and M. Kauers. Automatic classification of restricted lattice walks. *Proceedings of the 21st International Conference on Formal Power Series and Algebraic Combinatorics* 203–217, 2009.
- [7] M. Bousquet-Mélou, and M. Mishna. Walks with small steps in the quarter plane. *Contemp. Math.*, 520:1–40, 2010.
- [8] G. Fayolle, R. Iasnogorodski, and V. Malyshev. *Random walks in the quarter-plane*. Springer-Verlag, Berlin, 1999.
- [9] G. Fayolle, and K. Raschel. On the holonomy or algebraicity of generating functions counting lattice walks in the quarter-plane. *Markov Process. Related Fields*, 16:485–496, 2010.
- [10] G. Fayolle, and K. Raschel. Some exact asymptotics in the counting of walks in the quarter plane. *Proceedings of AofA’12*, 2012.
- [11] P. Flajolet, and R. Sedgewick. *Analytic Combinatorics*. Cambridge University Press, Cambridge, 2009.
- [12] I. Kurkova, and V. Malyshev. Martin boundary and elliptic curves. *Markov Process. Related Fields*, 4:203–272, 1998.
- [13] I. Kurkova, and K. Raschel. Explicit expression for the generating function counting Gessel’s walk. *Adv. in Appl. Math.*, 47:414–433, 2011.

- [14] I. Kurkova, and K. Raschel. On the functions counting walks with small steps in the quarter plane. *Arxiv: 1107.2340*, 2011.
- [15] V. Malyshev. Positive random walks and Galois theory. *Uspehi Mat. Nauk*, 26:227–228, 1971.
- [16] S. Melczer, and M. Mishna. Singularity analysis via the iterated kernel method. *In preparation*, 2011.
- [17] M. Mishna, and A. Rechnitzer. Two non-holonomic lattice walks in the quarter plane. *Theor. Comput. Sci.*, 410:3616–3630, 2009.
- [18] K. Raschel. Counting walks in a quadrant: a unified approach via boundary value problems. *J. Eur. Math. Soc.*, 14:749–777, 2012.
- [19] J. Resing, and R. Rietman. The $M/M/1$ queue with gated random order of service. *Statist. Neerlandica*, 58:97–110, 2004.
- [20] R. Stanley. *Enumerative Combinatorics*, vol. 2. Cambridge University Press, Cambridge, 1999.

A Remaining proofs

Let us start by expressing h , defined in (64), as an alternating sum. The reason why we wish to formulate h differently is twofold. First, this will enable us to show that $\rho \in [0.34499975, 0.34499976]$, see Corollary 22—and in fact, in a similar way, we can approximate ρ up to any level of precision. Also, this is actually a key lemma for proving Lemma 13.

Lemma 20.

$$h(z) = 1 + 2z \left(-1 - \alpha_0 + \sum_{k=0}^{\infty} (-1)^k T_k \right), \quad T_k = \begin{cases} \beta_{k/2} \alpha_{k/2} & \text{if } k \text{ is even,} \\ \beta_{(k-1)/2} \alpha_{(k+1)/2} & \text{if } k \text{ is odd.} \end{cases} \quad (97)$$

Proof. Equation (97) follows immediately from (49) and (64). □

As a preliminary result, we also need the following refinement of Proposition 10:

Lemma 21. *Assume that $z \in (0, 1/\sqrt{8})$. Then both sequences $\{\alpha_k\}_{k \geq 0}$ and $\{\beta_k\}_{k \geq 0}$ are positive and decreasing. Moreover, for all $k \geq 0$*

$$0 \leq \alpha_k \leq 1/\sqrt{2}^{2k+1}, \quad 0 \leq \beta_k \leq 1/\sqrt{2}^{2k+2}. \quad (98)$$

Proof. It is enough to prove that for all $|t| \leq 1$ and $z \in (0, 1/\sqrt{8})$,

$$0 \leq f(t) \leq \frac{t}{\sqrt{2}}. \quad (99)$$

The proof of this inequality is similar to that of (53) and therefore omitted. □

Corollary 22. *The series $h(z)$ defined in (64) or (97) has a radius of convergence at least $1/\sqrt{8}$. Its first positive zero ρ lies in $[0.34499975, 0.34499976]$.*

Proof. For $z \in (0, 1/\sqrt{8})$, the sequence $\{T_k\}_{k \geq 0}$ defined in Lemma 20 is positive and decreasing, see Lemma 21. In particular, denoting

$$\Lambda^p = \sum_{k=0}^p (-1)^k T_k \quad (100)$$

and using (97), for all $p \geq 0$ and all $z \in (0, 1/\sqrt{8})$ we have

$$1 + 2z(-1 - \alpha_0 + \Lambda^{2p+1}) < h(z) < 1 + 2z(-1 - \alpha_0 + \Lambda^{2p}). \quad (101)$$

Applying the last inequalities to $p = 4$ and noting that the right-hand side (resp. left-hand side) evaluated at 0.34499976 (resp. 0.34499975) is negative (resp. positive) concludes the proof. \square

Proof of Lemma 13. First, using the explicit expression of α_k and β_k , and employing calculus software, we obtain that the algebraic function $1 + 2z(-1 - \alpha_0 + \Lambda^5)$ has only one zero within the circle of radius $1/\sqrt{8}$, and that

$$\inf_{|z|=1/\sqrt{8}} |1 + 2z(-1 - \alpha_0 + \Lambda^5)| > 10^{-2}. \quad (102)$$

Note that the lower bound 10^{-2} in (102) is almost optimal; it is rather small because like ρ , the unique zero of $1 + 2z(-1 - \alpha_0 + \Lambda^5)$ within the disc of radius $1/\sqrt{8}$ is very close to $1/\sqrt{8}$.

By Rouché's theorem (see Theorem 11), applied to the circle with radius $1/\sqrt{8}$, it is now enough to prove that

$$\sup_{|z|=1/\sqrt{8}} |[1 + 2z(-1 - \alpha_0 + \Lambda^5)] - [1 + 2z(-1 - \alpha_0 + \Lambda^\infty)]| < 10^{-2}. \quad (103)$$

For this we write

$$|\Lambda^\infty - \Lambda^p| = \left| \sum_{k=p+1}^{\infty} (-1)^k T_k \right| \leq \sum_{k=p+1}^{\infty} |T_k| \leq \frac{1/\sqrt{2}^{2p+5}}{1 - (1/\sqrt{2})^2} < 1/\sqrt{2}^{2p+3}, \quad (104)$$

where the second upper bound is obtained from the inequality $|T_k| \leq 1/\sqrt{2}^{2k+3}$, see (97) and Lemma 21. By (104) we then obtain

$$|[1 + 2z(-1 - \alpha_0 + \Lambda^p)] - [1 + 2z(-1 - \alpha_0 + \Lambda^\infty)]| \leq 2|z| \frac{1}{2^{p+3/2}}. \quad (105)$$

If $|z| < 1/\sqrt{8}$, the last quantity is bounded from above by $1/2^{p+2}$. For $p = 5$, we obviously get $1/2^{p+2} < 10^{-2}$, and (103) is proven. \square

Lemma 23.

$$C_{0,0} = 0.0531 \cdot [1 + O(10^{-3})]. \quad (106)$$

Proof. As in the proof of Proposition 15, we can write

$$C_{0,0} = \frac{3\rho - 1}{\rho[1 - \rho^2 \hat{x}'_{0,0}(\rho)]}, \quad (107)$$

so that the main difficulty lies in approximating $\widehat{x}'_{0,0}(\rho)$. For this, we use (49) and (97) to write

$$\widehat{x}'_{0,0}(z) = -2\alpha'_0(z) + \sum_{k=0}^{\infty} (-1)^k T'_k(z). \quad (108)$$

While it is easy to control the series $\sum_{k=0}^{\infty} (-1)^k T_k(z)$, because $\alpha_k(z)$ and $\beta_k(z)$, and hence $T_k(z)$, decrease exponentially fast to 0 as $k \rightarrow \infty$, see Proposition 3 and Lemma 21, it is not obvious how we should deal with $\sum_{k=0}^{\infty} (-1)^k T'_k(z)$, where terms like $\alpha'_k(z)$ and $\beta'_k(z)$ appear. We next show that $\alpha'_k(z)$ and $\beta'_k(z)$ actually also decrease exponentially fast to 0 as $k \rightarrow \infty$, at least for $z \in [1/4, 0.35]$. Note that this assumption on z is not restrictive, since ρ belongs to the interval $[1/4, 0.35]$ by Corollary 22.

Consider the sequence $\{\gamma_k(z)\}_{k \geq 0}$ defined by $\gamma_0(z) = \alpha_0(z)$ and, for $k \geq 0$, by $\gamma_{k+1}(z) = f(\gamma_k(z))$, with $\alpha_0(z)$ and f as defined in (20) and (29), respectively. Note that (29) gives $\gamma_{2k}(z) = \alpha_k(z)$ and $\gamma_{2k+1}(z) = \beta_k(z)$. The sequence $\{\gamma'_k(z)\}_{k \geq 0}$ satisfies the recurrence relation

$$\gamma'_{k+1}(z) = \gamma'_k(z) \partial_t f(\gamma_k(z)) + \partial_z f(\gamma_k(z)). \quad (109)$$

Below we study the coefficients $\partial_t f(\gamma_k(z))$ and $\partial_z f(\gamma_k(z))$ of (109). By using expression (29) of f , we easily obtain that for all $z \in [0, 1/\sqrt{8}]$ and all $t \in [0, a_0(z)]$

$$|\partial_t f(\gamma_k(z))| \leq 4\sqrt{2}/9. \quad (110)$$

In addition, $\partial_z f(t) = f(t)/[z\sqrt{1-4z^2(1+t^2)}]$, in such a way that $|\partial_z f(t)| \leq |2/z| \cdot |f(t)|$ for all $z \in [0, 1/\sqrt{8}]$ and all $t \in [0, a_0(z)]$. Using then Lemma 21, we obtain

$$|\partial_z f(\gamma_k(z))| \leq |2/z| \cdot |f(\gamma_k(z))| = |2/z| \cdot |\gamma_{k+1}(z)| \leq |2/z| \cdot 1/\sqrt{2}^{k+1} \leq 8/\sqrt{2}^{k+1}, \quad (111)$$

where the last inequality follows from the assumption $z \in [1/4, 0.35]$. From (109)–(111) we get

$$|\gamma'_{k+1}(z)| \leq \eta \cdot |\gamma'_{k+1}(z)| + \xi_k, \quad \eta = 4\sqrt{2}/9, \quad \xi_k = 8/\sqrt{2}^{k+1}. \quad (112)$$

We deduce that

$$|\gamma'_{k+1}(z)| \leq \eta^{k+1} \cdot |\gamma'_0(z)| + \sum_{p=0}^k \eta^p \xi_{k-p} \leq \eta^{k+1} \cdot |\gamma'_0(z)| + 72/\sqrt{2}^{k+1} \leq 100/\sqrt{2}^{k+1}, \quad (113)$$

where the last inequality follows from $\sup_{z \in [0.25, 0.35]} |\gamma'_0(z)| \leq 13$ and $\eta \leq 1/\sqrt{2}$. With Lemma 21 and (113), we obtain

$$|T'_k(z)| \leq 200/\sqrt{2}^{k+2}, \quad (114)$$

and thanks to (108) we can obtain approximations of $\widehat{x}'_{0,0}(\rho)$ up to any level of precision. Lemma 23 follows. \square