



# Transport barrier for the radial diffusion due to the ExB drift motion of guiding centers in cylindrical confinement geometry

Olivier Izacard, Natalia Tronko, Cristel Chandre, Guido Ciraolo, Michel Vittot, Philippe Ghendrih

## ► To cite this version:

Olivier Izacard, Natalia Tronko, Cristel Chandre, Guido Ciraolo, Michel Vittot, et al.. Transport barrier for the radial diffusion due to the ExB drift motion of guiding centers in cylindrical confinement geometry. 2010. hal-00542733v1

**HAL Id: hal-00542733**

**<https://hal.science/hal-00542733v1>**

Preprint submitted on 3 Dec 2010 (v1), last revised 7 Oct 2011 (v5)

**HAL** is a multi-disciplinary open access archive for the deposit and dissemination of scientific research documents, whether they are published or not. The documents may come from teaching and research institutions in France or abroad, or from public or private research centers.

L'archive ouverte pluridisciplinaire **HAL**, est destinée au dépôt et à la diffusion de documents scientifiques de niveau recherche, publiés ou non, émanant des établissements d'enseignement et de recherche français ou étrangers, des laboratoires publics ou privés.

# Transport barrier for the radial diffusion due to the $E \times B$ drift motion of guiding centers in cylindrical confinement geometry

O. Izacard<sup>1</sup> & N. Tronko<sup>1</sup> & C. Chandre<sup>1</sup>  
& G. Ciraolo<sup>2</sup> & M. Vittot<sup>1</sup> & Ph. Ghendrih<sup>3</sup>

December 3, 2010

<sup>1</sup> Centre de Physique Théorique (CPT) - UMR 6207, Campus de Luminy - case 907, F-13288 Marseille cedex 09, France

<sup>2</sup> Laboratoire de Mécanique, Modélisation & Procédés Propres (M2P2) - UMR 6181, Technopôle de Château-Gombert, 13451 Marseille cedex 20, France

<sup>3</sup> Institut de Recherche sur la Fusion Magnétique (IRFM) - CEA/DSM Cadarache, F-13108 Saint-Paul-lez-Durance, France

PACS 05.45.-a Nonlinear dynamics and nonlinear dynamical systems.

PACS 05.45.Gg Control of chaos, applications of chaos.

## Abstract

We consider the radial transport of test particles due to the  $\mathbf{E} \times \mathbf{B}$  drift motion in the guiding center approximation. In a configuration where the magnetic field is constant and uniform in linear devices or with neglecting toroidal effects in tokamaks, the  $\mathbf{E} \times \mathbf{B}$  instability is one of the main sources of deconfinement of magnetized plasmas. Using an explicit expression to modify the electrostatic potential, we show that it is possible to construct a transport barrier which suppresses the radial transport. We propose an algorithm and a simulation of test particles for the implementation of this local modification computed from an electrostatic potential known on a spatio-temporal grid. The number of particles which escape the inner region defined by the barrier measures the efficiency of the control.

## 1 Introduction

Control of chaotic transport is an important topic in many areas of physics with considerable research and technical applications. Its aim is to reduce chaos when it is harmful and enhance it when it is beneficial. In the context of Hamiltonian

systems, the possibility of controlling chaos finds some important applications in particle accelerator dynamics (increase of dynamical aperture), free electron lasers (reduction of intensity fluctuations), atomic physics (control of ionization rates) and fluid mechanics (increase of fluid mixing). A lot of efforts have been devoted to reduce chaotic and turbulent transport in laboratory plasma physics. Two examples are afforded by the control of stochasticity of magnetic field lines and the transport generated by plasma instabilities. In magnetically confined fusion plasmas, like tokamaks, the electrostatic turbulence and the associated  $\mathbf{E} \times \mathbf{B}$  drift motion, is one of the main sources for the loss of energy confinement [1, 2, 3] and consequently a relevant obstacle to the attainment of plasma ignition. The development of control strategies able to induce a relevant change in transport properties, *i.e.* turbulence reduction, by means of a small and localized perturbation constitutes a way to understand the complex behavior of laboratory plasmas in the long run to achieve thermonuclear fusion.

A convenient way to control these systems is by using electromagnetic fields. Since the plasma dynamics is very sensitive to electrostatic fluctuations, a control method for the  $\mathbf{E} \times \mathbf{B}$  drift motion of test particles has been proposed by a small and apt modification of the electrostatic potential [4, 5]. This method has been tested on a Travelling-Wave Tube (TWT) for the reduction of chaotic transport [6]. It is worth noticing that for these methods the relevant modifications were applied in all the plasma region. To step forward in the applicability of this control scheme to more complex plasma devices, we present a method and its practical algorithm to construct a transport barrier for the radial dynamics where the modification of the potential is only applied in a peripheral region of the plasma. Our strategy does not depend on the electrostatic potential at hand whether it is known analytically, numerically or experimentally. The geometry we are considering is a cylindrical spatial geometry which is shared by many linear devices like for example VINETA [7], MIRABELLE [8] or CSDX [9]. Moreover, as in these devices the plasma temperature is not too high, plasma density and plasma electrostatic potential are routinely measured by inserting probe arrays with large radial and poloidal extents. In that way it is possible to have a very accurate description of the space time behavior of the plasma [10, 11, 7]. In addition it is worth noticing that it is also possible to act on the plasma using electrodes directly in contact with the plasma, producing for example a mode locking between the injected sinusoidal signal and the plasma dynamics [12, 13]. The first part of this paper deals with the analytical solution in order to create a radial transport barrier with only the knowledge of the electrostatic potential. The second part concerns the numerical algorithm to compute this control from electrostatic potential data. Finally, the third part is related to the computation and the results of the control of test particle dynamics in an electrostatic potential without or with control.

## 2 Method

### 2.1 Guiding-center dynamics

The equations of motion of charged particles (of charge  $e$  and mass  $m$ ) in electromagnetic fields ( $\mathbf{E} = -\nabla V - \partial \mathbf{A}/\partial t$  and  $\mathbf{B} = \nabla \times \mathbf{A}$ ) can be obtained in a Hamiltonian framework [14, 15] where the Hamiltonian is

$$H(\mathbf{p}, \mathbf{q}, t) = \frac{(\mathbf{p} - e\mathbf{A}(\mathbf{q}, t))^2}{2m} + eV(\mathbf{q}, t), \quad (1)$$

where  $\mathbf{q}$  is the position of the particle and  $\mathbf{p}$  is its canonically conjugate momentum. In strong magnetic fields, particles have a fast gyration motion around the guiding-center [16]. The relation between the position of the particle and its guiding center is:

$$\mathbf{q} = \mathbf{x} + \boldsymbol{\rho}, \quad (2)$$

where  $\mathbf{x}$  is the position of the guiding-center and  $\boldsymbol{\rho}$  is the Larmor vector. In what follows, we restrict our study to the case where the magnetic field is constant and uniform:  $\mathbf{B} = B\hat{\mathbf{z}}$ . In this case, in order to reduce the system, we apply the generalized canonical transformation  $(\mathbf{q}, \mathbf{p}) \mapsto (\mathbf{x}, \mathbf{u})$ :

$$\mathbf{x} = \mathbf{q} - \frac{1}{eB}\hat{\mathbf{z}} \times (\mathbf{p} - e\mathbf{A}), \quad (3)$$

$$\mathbf{u} = \frac{\mathbf{p}}{m} - \frac{e\mathbf{A}}{m}. \quad (4)$$

The Hamiltonian becomes [17, 18]:

$$H = \frac{m\mathbf{u}^2}{2} + eV\left(\mathbf{x} + \frac{m}{eB}\hat{\mathbf{z}} \times \mathbf{u}, t\right), \quad (5)$$

and the Poisson bracket has pairs of conjugate coordinates:  $(z, u_z)$ ,  $(x, y)$  and  $(u_x, u_y)$ .

$$\begin{aligned} \{F, G\} = & -\frac{1}{eB}\hat{\mathbf{z}} \cdot \left( \frac{\partial F}{\partial \mathbf{x}} \times \frac{\partial G}{\partial \mathbf{x}} \right) + \frac{eB}{m^2}\hat{\mathbf{z}} \cdot \left( \frac{\partial F}{\partial \mathbf{u}} \times \frac{\partial G}{\partial \mathbf{u}} \right) \\ & + \frac{1}{m} \left( \hat{\mathbf{z}} \cdot \frac{\partial F}{\partial \mathbf{x}} \hat{\mathbf{z}} \cdot \frac{\partial G}{\partial \mathbf{u}} - \hat{\mathbf{z}} \cdot \frac{\partial F}{\partial \mathbf{u}} \hat{\mathbf{z}} \cdot \frac{\partial G}{\partial \mathbf{x}} \right). \end{aligned}$$

It is important to notice that the two coordinates ( $x$  and  $y$ ) of the guiding center in the plane transverse to the magnetic field are conjugate, as well as the two velocities ( $u_x$  and  $u_y$ ) of the particle in this transverse plane. Nothing is changed along the direction of the field lines. In order to reduce the dimensionality of our system, we neglect the finite Larmor radius (FLR) effects

$$V\left(\mathbf{x} + \frac{m}{eB}\hat{\mathbf{z}} \times \mathbf{u}, t\right) \approx V(\mathbf{x}, t),$$

which is standard hypothesis for plasma devices, in particular, for tokamaks. In this way, we notice that the equations of motion for the position of the guiding

center are decoupled from the ones of the velocity of the particle. The equations of motion are given by

$$\begin{aligned}\dot{x} &= -\frac{1}{B} \frac{\partial V}{\partial y}, \\ \dot{y} &= +\frac{1}{B} \frac{\partial V}{\partial x},\end{aligned}$$

that is the velocity of the guiding centers is equal to the  $\mathbf{E} \times \mathbf{B}$  drift velocity.

We consider a cylindrical geometry as encountered in linear plasma devices. In this geometry, the polar coordinates are better suited. We perform the (non-canonical) change of coordinates  $x = r \cos \theta$  and  $y = r \sin \theta$ . The Poisson bracket of the reduced system in the poloidal plane (see [19]) is changed into

$$\{F, G\} = \frac{1}{reB} \left( \frac{\partial F}{\partial \theta} \frac{\partial G}{\partial r} - \frac{\partial F}{\partial r} \frac{\partial G}{\partial \theta} \right),$$

with a reduced Hamiltonian  $H = e\tilde{V}(r, \theta, t)$ , where  $\tilde{V}(r, \theta, t) = V(x, y, t)$ . In what follows, we remove the tildas for simplicity of the notations. Hence, the equations of motion for the guiding centers are:

$$\dot{r} = -\frac{1}{rB} \frac{\partial V}{\partial \theta}, \quad (6)$$

$$\dot{\theta} = +\frac{1}{rB} \frac{\partial V}{\partial r}. \quad (7)$$

The singularity at  $r = 0$  can be removed by reformulating the equations of motion in the canonically conjugate pair of variables  $(\Psi, \theta)$  with  $\Psi = r^2/2$ . However the singularity is in general not a problem in the numerical integration of test particles since the measured fluctuating potentials vanish in the core region around  $r = 0$ . The important region where confinement is crucial is the peripheral (edge) region whether it is for linear devices or toroidal ones like tokamaks.

## 2.2 Control term for a transport barrier

We are looking at modifications of the Hamiltonian, *i.e.* of the electrostatic potential  $V$ , in order to create a radial transport barrier. We consider the following expression for the controlled potential  $V_c$ :

$$V_c(r, \theta, t) = V(f(r, \theta, t), \theta, t), \quad (8)$$

where  $f(r, \theta, t)$  is the control function that has to be determined. We define the application  $T$  as:

$$T : (r, \theta, t) \mapsto (f(r, \theta, t), \theta, t), \quad (9)$$

with which the controlled potential is written as  $V_c = V \circ T$ . We impose that this new potential creates a transport barrier for the guiding centers located at

$r = R(\theta, t)$ . This is equivalent to imposing that  $r = R(\theta, t)$  is invariant by the dynamics. More specifically, we have

$$\dot{R} = \partial_t R(\theta, t) + \dot{\theta} \partial_\theta R(\theta, t), \quad (10)$$

where  $\dot{R}$  and  $\dot{\theta}$  are given by Eqs. (6)-(7) for the potential  $V_c$  given by Eq. (8). Equation (10) translates into

$$\frac{1}{RB} \frac{\partial V}{\partial r} \frac{\partial}{\partial \theta} [f(R(\theta, t), \theta, t)] + \frac{\partial R}{\partial t} + \frac{1}{RB} \frac{\partial V}{\partial \theta} = 0,$$

where the derivatives of  $V$  are taken at  $r = f(R(\theta, t), \theta, t)$ . This equation has two unknown functions  $f$  and  $R$  to be determined. A bounded solution can be found when the time-average of  $V(f(R(\theta, t), \theta, t), \theta, t)$  vanishes for all values of  $\theta$ . We assume that the time-average of  $V$  is zero for all  $\theta$  at a given radius  $r_0$ . We obtain a solution for  $f$  and  $R$  assuming that

$$f(R, \theta, t) = r_0, \quad (11)$$

and

$$R(\theta, t) = \sqrt{r_0^2 - \frac{2}{B} \Gamma \frac{\partial V}{\partial \theta}(r_0, \theta, t)}, \quad (12)$$

where  $\Gamma$  is a linear operator acting on any function (with vanishing mean value) of time as the pseudo-inverse of the derivative with respect to time, *e.g.*, acting on a function  $\phi(t)$  as

$$\frac{\partial (\Gamma \phi(t))}{\partial t} = \phi(t). \quad (13)$$

There is still a lot of freedom for the choice of the control term, even if all these choices lead to the same equation for the transport barrier  $R$  given by Eq. (12). We solve Eq. (11) using the following control terms:

$$f_1(r, \theta, t) = r + \psi_1(\theta, t), \quad (14)$$

$$f_2(r, \theta, t) = r + e^{-(r-r_0)^2/2\sigma^2} \psi_2(\theta, t), \quad (15)$$

where the  $\psi_i(\theta, t)$  are arbitrary functions of  $\theta$  and  $t$  to be determined by Eq. (11). The first expression  $f_1$  for the control term implies that the potential has to be modified on the entire phase space. However it is desirable to only apply the modifications on a particular region of the transverse plane. In order to localize radially the control required for creating the transport barrier, a first idea is to localize the potential modifications in a neighborhood of the barrier  $R(\theta, t)$ . The fact that this localization is varying in time makes this strategy challenging for an experimental realization. In order to address this issue we adopt a slightly different strategy: the control term  $f_2$  leads to a modification of the potential only in the neighborhood of a circle of radius  $r_0$  which is more adapted to an experimental application since the control is envisaged through a set of probes usually aligned along a circle, or a predefined fixed geometry. A Gaussian function around the radius  $r_0$  is used to describe this localization

and  $\sigma$  is related to the width at half maximum. Using Eqs. (8), (11) and (12), the controlled potentials associated with the control terms (14) and (15) are respectively:

$$V_c(r, \theta, t) = V(r + r_0 - R, \theta, t), \quad (16)$$

$$V_c(r, \theta, t) = V\left(r + (r_0 - R)e^{((R-r_0)^2 - (r-r_0)^2)/(2\sigma^2)}, \theta, t\right), \quad (17)$$

where  $R(\theta, t)$  is defined by Eq. (12).

### 3 Numerical algorithm

We investigate numerically the effect of the controlled potential  $V_c = V \circ T$  on the dynamics of guiding centers. We have developed our algorithm such that it is applicable for any potential known on a spatio-temporal grid as obtained in numerical codes or as measured experimentally.

#### 3.1 Computation of controlled electrostatic potential

The measurement of the electrostatic potential  $V$  is performed on a grid of  $M_r \times M_\theta \times M_t$  points called the measurement grid. The numbers  $M_r$  and  $M_\theta$  correspond to the number of probes. This is the input of our numerical algorithm. This measurement can be given by experimental measurement or numerical data. However the control term  $f$  is computed on a refined spatial grid of  $N_r \times N_\theta \times N_t$  points where  $N_r > M_r$  and  $N_\theta > M_\theta$  in order to minimize the error in the numerical scheme. The potential given by Eq. (8) is used in order to create a local barrier of radial transport. The controlled potential  $V_c$  is calculated on the measurement grid or on the refined one if the original grid is too coarse-grained (in order to avoid fake dissipation due to an imprecise way of computing Hamilton's equations). The output of this computation is the modifications of the electrostatic potential given on the measurement grid.

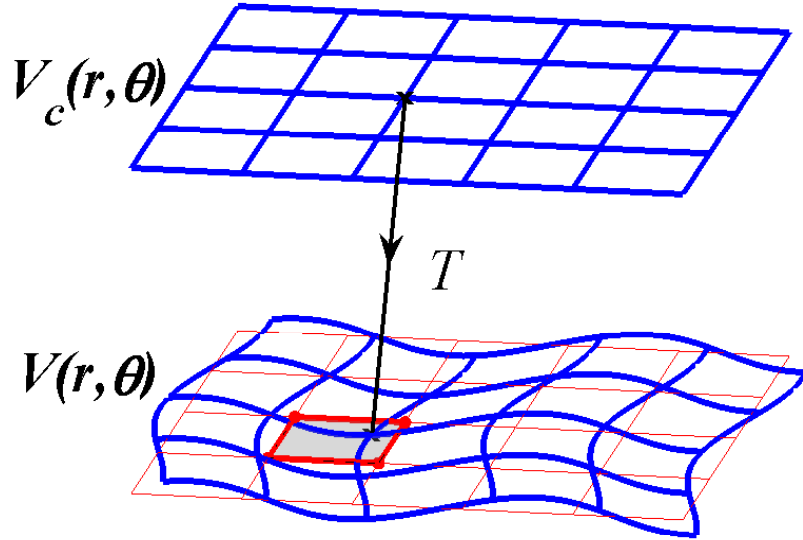
The derivatives with respect to periodic variables (*e.g.*,  $\theta$ ) as well as the  $\Gamma$ -operator given by Eq. (13) are computed using Fast Fourier Transform and for non-periodic variables (*e.g.*,  $r$ ) with a fourth order finite-difference scheme.

As we can see from Eqs. (16) and (17), the controlled potential  $V_c$  is simply obtained from the original one  $V$  by a shift in the radial position  $r$  (which depends on  $\theta$  and  $t$ ). This means that for determining  $V_c$  on a given spatial grid one has to recover, by interpolation, the values of  $V$  on a deformed grid as schematically represented in Fig. 1.

#### 3.2 Computation of test particles

We compute and compare the dynamics of test particles given by the equations of motion (6) and (7) obtained with the uncontrolled and the controlled electrostatic potentials,  $V$  and  $V_c = V \circ T$  respectively. In order to integrate these equations of motion, we use a fourth order Runge-Kutta integrator. Even though

Figure 1: The controlled potential  $V_c$  on the initial grid is obtained by interpolating the uncontrolled potential  $V$  (from the red grid) on the deformed blue grid obtained from the map  $T$  given by Eq. (9).





this is not a symplectic scheme, we monitor the total energy  $E + V(x(t), y(t), t)$  where the dynamics of  $E$  is given by  $\dot{E} = -\partial V/\partial t$ , so as to ensure that the numerical error is negligible. This also constitutes a way to check globally our numerical scheme. This last dynamical equation is integrated with the same numerical scheme as Eqs. (6) and (7).

With a set of initial conditions inside the barrier  $r = R(\theta, t)$ , we compute the dynamics of test particles separately for the uncontrolled and for the controlled electrostatic potential. If there is radial transport, the particles which are initially inside the barrier may leave the inner region. When the control creates a radial transport barrier, the test particles are expected to remain inside this barrier.

## 4 Numerical results

### 4.1 Computation with uncontrolled potential

In order to validate our method with the computation of test particles, we use an analytic potential which mimics a turbulent potential with small and large structures with a decay of the spatial modes consistent with experimental measurements [1]. We use only one frequency given that the frequency spectrum does not introduce changes in the algorithm as shown in Ref. [20]. This potential has been studied in Ref. [3] and is given by:

$$V(r, \theta, t) = a \sum_{\substack{n, m = -N \\ n^2 + m^2 < N^2 \\ n \neq 0, m \neq 0}}^N \frac{1}{(n^2 + m^2)^{3/2}} \times \sin(nr \cos \theta + mr \sin \theta + \varphi_{nm} - t), \quad (18)$$

where  $a$  is the amplitude of the potential and  $\varphi_{nm}$  are random phases in order to model a turbulent potential with  $N = 25$ . The amplitude  $a$  is a parameter to modulate the importance of chaotic transport. Figure 2 is a representation of this potential at time  $t = 0$ . We add a filter in a small circular region centered in  $r = 0$  to model the fact that the electrostatic fluctuations are weak at the center of the device. This cancels the singularity of the equations of motion.

In order to obtain an accurate numerical simulation, we choose the number of points  $N_r = 256$  (in the radial position  $r$ ),  $N_\theta = 512$  (in the poloidal angle  $\theta$ ) and  $N_t = 64$  (in time) for the electrostatic potential grid. The total energy conservation is accurate up to  $10^{-4}$  up to a time of integration of 100 periods.

The initial positions of test particles are chosen near the center (inside the position of the barrier obtained later with the controlled electrostatic potential). Figure 3 shows the Poincaré section (stroboscopic plot with the period of the potential) of test particles obtained with the uncontrolled electrostatic potential. We notice that the diffusion of test particles is more pronounced in the peripheral region than in the core region where the test particles are trapped for some time.

Figure 2: Potential  $V$  given by Eq. (18) at  $t = 0$  for  $a = 0.4$ .

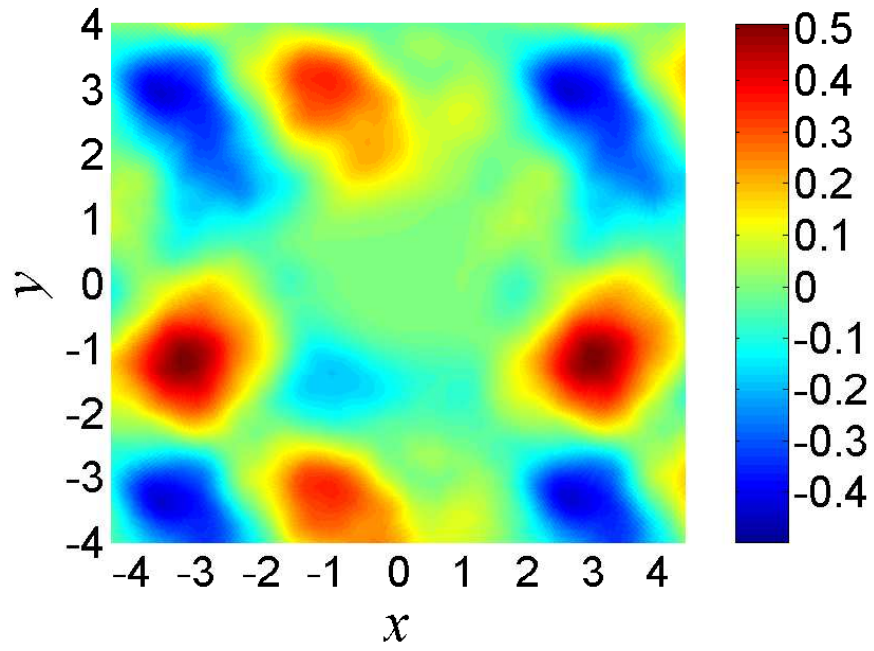
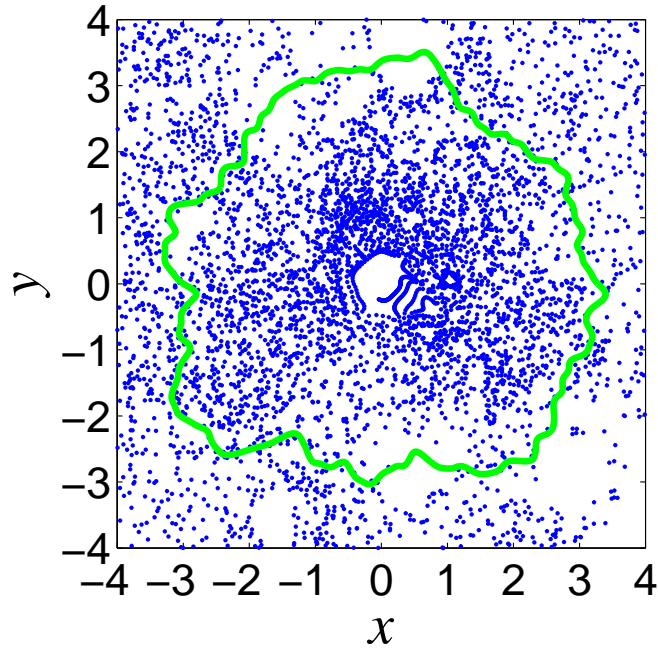


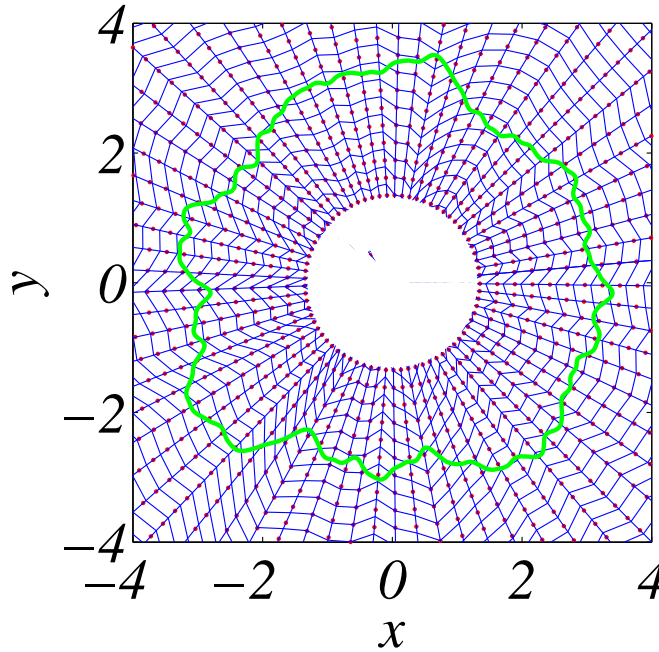
Figure 3: Poincaré section of 100 test particles for the potential  $V$  given by Eq. (18) for  $a = 0.4$ , up to  $t = 100 \times 2\pi$ .



The green line defined by  $r = R(\theta, t)$  at  $t = 0$  is added to show that guiding-centers can diffuse (without control) in all the available plane perpendicular to the magnetic field lines. More precisely, in the computation presented in Fig. 3, only 11% of the trajectories remain inside the barrier after 100 periods of the potential.

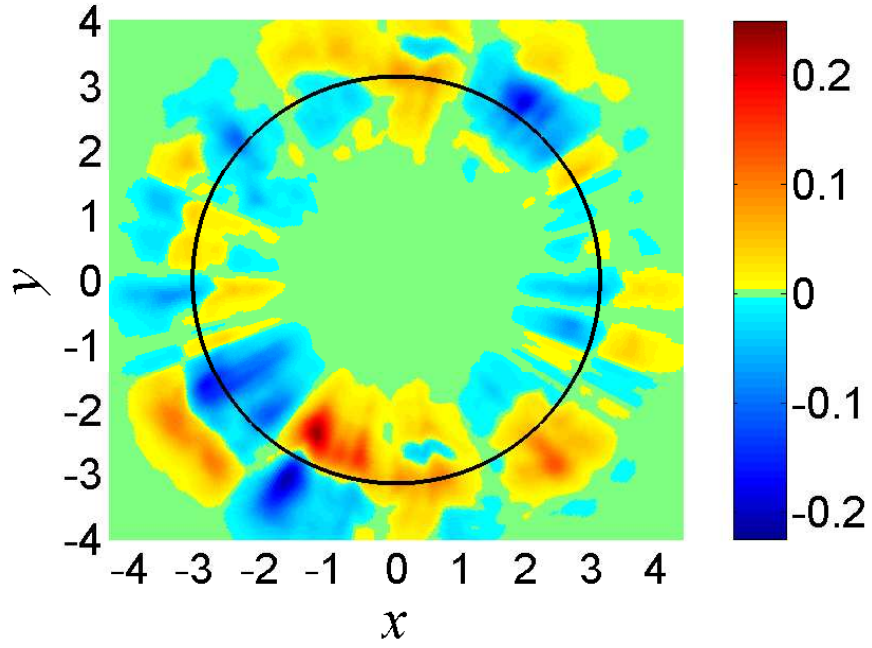
## 4.2 Computation with controlled potential

Figure 4: Initial grid (red dots) where the uncontrolled potential  $V$  is known. Modified grid (blue lines) defined by Eq. (9) where  $V$  is interpolated to obtain  $V_c$  given by Eq. (16) on the initial grid (red dots). The green line is the position of the barrier fluctuating near the fixed point  $r_0 = \pi$ .



As described in the numerical algorithm, the measurement of the electrostatic potential is performed with  $(M_r, M_\theta) = (128, 256)$ . The control term and electrostatic potential are computed on this measurement grid. A final step is to interpolate the controlled potential on the initial grid  $(N_r, N_\theta)$  using a spline interpolation. We apply our control algorithm in order to confine test particles inside the barrier. The controlled potential given by Eq. (17) is considered. It is computed numerically performing an interpolation method of  $V$  on the deformed grid explicitly defined by  $V_c = V \circ T$  following the procedure sketched in Fig. 1. For example, in Fig. 4 we represent the deformation of the grid associated with the computation of the controlled potential given by Eq. (16).

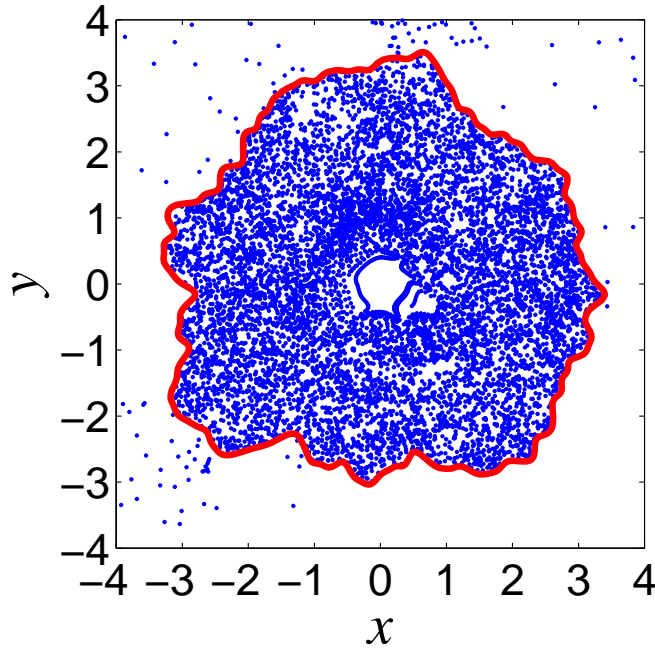
Figure 5: Difference  $V_c - V$  between  $V_c$  given by Eq. (17) with  $\sigma = 0.6$  and  $V$  given by Eq. (18) at  $t = 0$  for  $a = 0.4$ . This modification is centered around the black circle with radius  $r_0$ .



The difference  $V_c - V$  between the controlled electrostatic potential  $V_c$  and the potential  $V$  given by Eq. (18) is shown in Fig. 5 for the computed controlled potential given by Eq. (17).

The efficiency of the control algorithm is estimated from the dynamics of test particles obtained by integrating Eqs. (6) and (7) with the controlled potential  $V_c$ . Figure 6 shows the Poincaré section of test particle trajectories obtained with the controlled potential  $V_c$  given by Eq. (17). There are 90% of particles which remain inside the barrier.

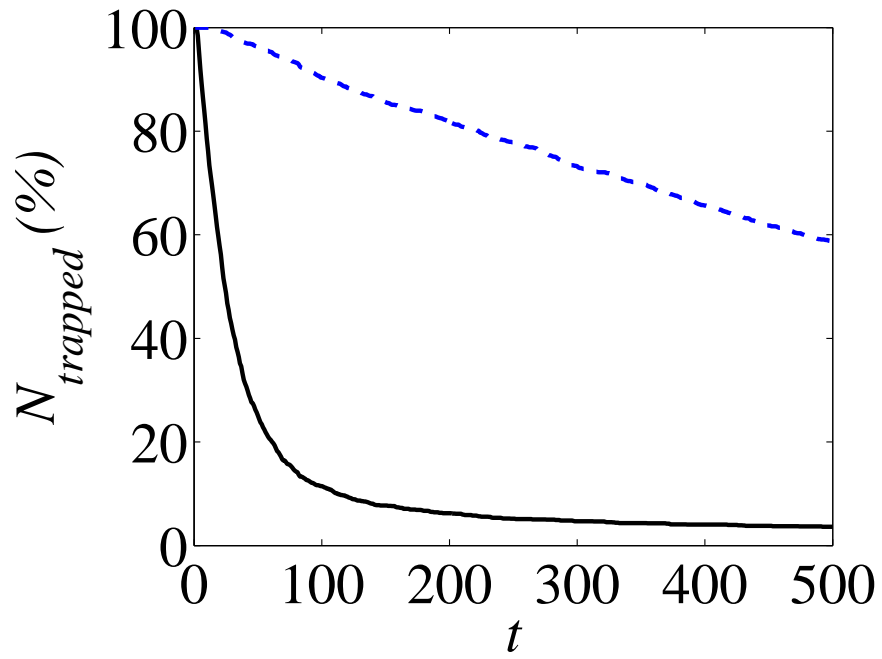
Figure 6: Poincaré section of 100 test particles for the potential  $V_c$  given by Eq. (17) where  $V$  is given by Eq. (18) for  $a = 0.4$ ,  $\sigma = 0.6$ , up to  $t = 100 \times 2\pi$ .



The position of the control barrier  $R(\theta, 2k\pi) = R(\theta, 0)$  is represented by the red solid line. The test particles are stopped at the barrier. A quantitative estimate of the efficiency of the control scheme is obtained by comparing the number of particles trapped inside the position of 1.2 times of the radial position of the barrier for the controlled and uncontrolled potentials.

The time evolution of the percentage of particles which stay inside the barrier is shown in Fig. 7. There is less than 5% of trapped particles without the control and this is due to the trapping near resonant islands which exist inside the barrier. For  $a = 0.4$ , up to  $t = 100 \times 2\pi$ , there are 11% of trapped particles without the control (see Fig. 3) in comparison to 90% for the control potential (see Fig. 6). On a longer time scale, up to  $t = 500 \times 2\pi$ , there are 4% of

Figure 7: Time evolution (in periods) of the percentage of trapped particles which stay inside the barrier *i.e.* with  $(r, \theta)$  such that  $r \geq \alpha R(\theta, t)$  where  $\alpha = 1.2$ . This picture show the results without (in solid black curve) or with the control (in dashed blue curve) computed from 2000 particles.



trapped particles without the control and there are 59% with control. We notice that the control does not lead to 100% of trapped particles as expected from Eq. (17) since the numerical algorithm (performed on a grid) introduces some perturbation from the exact control. This is also to be expected from the discrepancy between the measured potential and the actual one which prevents the computation of a very accurate control. However nearly all trajectories are trapped inside the transport barrier; it shows that the control method is robust in the numerical implementation. From practical purposes the control given by Eq. (17) is more interesting than the one given by Eq. (16) since it allows one to put all the probes on a fixed circle. However, the control given by Eq. (16) is more efficient compared to Eq. (17) where we notice a drastic reduction of the transport of particles.

Finally we would like to point out that our strategy does not depend on the chosen potential whether it is known analytically or not, *e.g.*, as a result of a numerical simulation or an experimental measurement. The method only uses a potential known on a spatio-temporal grid. From this grid, a modified grid is computed and the controlled potential is equal to the original one on this modified grid. The modifications of the grid are of the order of the fluctuations of the potential  $V$ .

An important advantage of the proposed strategy concerns the relatively small modifications of the potential. The mean average in angle  $\theta$  and time  $t$  (denoted  $\langle \cdot \rangle$ ) of the potential modifications on the radial position  $r = r_0$ , *i.e.*  $\langle |V(r_0, \theta, t) - V_c(r_0, \theta, t)| \rangle$ , is about 30% of the mean average of the potential  $\langle |V(r_0, \theta, t)| \rangle$ . This has to be compared with a simpler version of the control which consists in creating a potential barrier around  $r = r_0$  such that  $V_c(r = r_0, \theta, t)$  is small. In order to obtain the same quantity of trapped particles ( $N_{trapped} \sim 60\%$  up to  $t = 500 \times 2\pi$ ), it would be necessary to cancel 90% of the electrostatic potential which has to be compared with 30% of the modifications introduced by the proposed strategy.

## 5 Acknowledgments

The authors would like to acknowledge the VINETA Nonlinear Plasma Dynamics Group of IPP-Greifswald for helpful discussions. We acknowledge financial support from the Agence Nationale de la Recherche (ANR EGYPT). This work was also supported by the European Community under the contract of Association between EURATOM, CEA, and the French Research Federation for fusion study. The views and opinions expressed herein do not necessarily reflect those of the European Commission.

## References

- [1] Wootton A., Carreras B., Matsumoto H., McGuire K., Peebles W., Ritz C., Terry P. & Zweben S. *Phys. Fluids B* **2**19902879.



- [2] Scott B. *Phys. Plasmas***10**2003963.
- [3] Pettini M., Vulpiani A., Misguich J., Deleener M., Orban J. & Balescu R. *Phys. Rev. A***38**1988344.
- [4] Ciraolo G., Briolle F., Chandre C., Floriani E., Lima R., Vittot M., Pettini M., Figarella C. & Ghendrih P. *Phys. Rev. E***69**2004056213.
- [5] Tronko N., Vittot M., Chandre C., Ghendrih P. & Ciraolo G. *J. Phys. A: Math. Theor.***42**2009085501.
- [6] Chandre C., Ciraolo G., Doveil F., Lima R., Macor A. & Vittot M. *Phys. Rev. Lett.***94**2005074101.
- [7] Windisch T., Grulke O. & Klinger T. *Physics of Plasmas***13**2006122303.
- [8] Brochard F., Gravier E. & Bonhomme G. *Phys. Plasmas***12**2005062104.
- [9] Burin M., Tynan G., Antar G., Crocker N. & Holland C. *Phys. Plasmas***12**2005052320.
- [10] Grulke O. & Klinger T. *New J. Phys.***4**200267.
- [11] Windisch T., Grulke O. & Klinger T. *Phys. Scr.***T122**200615.
- [12] Klinger T., Latten A., Piel A., Bonhomme G. & Pierre T. *Plasma Phys. Control. Fusion***39**1997B145.
- [13] Brandt C., Grulke O. & Klinger T. *Plasma Phys. Control. Fusion***52**2010055009.
- [14] Morrison P. J. *AIP Conf. Proc.***88**198213.
- [15] Morrison P. J. *Phys. Plasmas***12**2005058102.
- [16] Northrop T. *Ann. Phys.***15**196179.
- [17] Littlejohn R. *J. Math. Phys.***20**19792445.
- [18] Cary J. R. & Brizard A. J. *Rev. Mod. Phys.***81**2009693.
- [19] Morrison P. J. *Rev. Mod. Phys.***70**1998467.
- [20] Ciraolo G., Ghendrih Ph., Sarazin Y., Chandre C., Lima R., Vittot M. and Pettini M. *J. Nucl. Mater.***363**2007550.