



HAL
open science

Unilateral seminoma with multiple visceral metastases in a duck (*Anas platyrhynchos*)

Franco Mutinelli, Marta Vascellari, Elisa Bozzato

► **To cite this version:**

Franco Mutinelli, Marta Vascellari, Elisa Bozzato. Unilateral seminoma with multiple visceral metastases in a duck (*Anas platyrhynchos*). *Avian Pathology*, 2006, 35 (04), pp.327-329. 10.1080/03079450600821158 . hal-00540053

HAL Id: hal-00540053

<https://hal.science/hal-00540053>

Submitted on 26 Nov 2010

HAL is a multi-disciplinary open access archive for the deposit and dissemination of scientific research documents, whether they are published or not. The documents may come from teaching and research institutions in France or abroad, or from public or private research centers.

L'archive ouverte pluridisciplinaire **HAL**, est destinée au dépôt et à la diffusion de documents scientifiques de niveau recherche, publiés ou non, émanant des établissements d'enseignement et de recherche français ou étrangers, des laboratoires publics ou privés.



Unilateral seminoma with multiple visceral metastases in a duck (*Anas platyrhynchos*)

Journal:	<i>Avian Pathology</i>
Manuscript ID:	CAVP-2006-0005.R3
Manuscript Type:	Short Communication
Date Submitted by the Author:	13-Apr-2006
Complete List of Authors:	Mutinelli, Franco; Istituto Zooprofilattico Sperimentale delle Venezie, Histopathology Vascellari, Marta; Istituto Zooprofilattico Sperimentale delle Venezie, Histopathology Bozzato, Elisa; Istituto Zooprofilattico Sperimentale delle Venezie, Histopathology
Keywords:	seminoma, duck, metastasis, histopathology

SCHOLARONE™
Manuscripts

Cavp – 2006-0005

Formatted: Right

Unilateral seminoma with multiple visceral metastases in a duck (*Anas platyrhynchos*)

Formatted: Font: 14 pt, Not Bold

Franco Mutinelli*, Marta Vascellari, Elisa Bozzato

Formatted: Font: Bold

Formatted: Font: Bold

Histopathology Laboratory, Istituto Zooprofilattico Sperimentale delle Venezie, viale dell'Università 10, 35020 Legnaro (PD), Italy

Formatted: Font: Italic

*Corresponding Author: E-mail: fmutinelli@izsvenezie.it

Deleted: ¶

Received 9 January 2006

Formatted: Font: Italic

Cavp – 2006-0005

Unilateral seminoma with multiple visceral metastases in a duck (*Anas platyrhynchos*)

Formatted: Font: 14 pt, Not Bold

Franco Mutinelli*, Marta Vascellari, Elisa Bozzato

Summary

A case of unilateral seminoma with visceral metastases in a Mallard duck (*Anas platyrhynchos*) is reported. The right testis was markedly enlarged. The liver surface showed multifocal to coalescent regular circular umbilicated greyish-white spots. In addition, multiple rough whitish nodules were evident on pancreas and visceral peritoneum lining the intestine. Histologically, the right testicular parenchyma was diffusely affected and replaced by neoplastic growth, consisting of sheets of large round to polyhedral cells with conspicuous vesicular nuclei having distinctly granular chromatin and prominent nucleoli. Sheets of cells with similar features were observed also in the other affected organs. Multiple lung metastases were detected on histology. This is the first known report of seminoma with hepatic, pancreatic, pulmonary and peritoneal metastases in a Mallard duck.

Deleted: ¶

Deleted: ¶

Formatted: Font: Bold

Introduction

Seminoma is a primary testicular tumour, originating from the germ cells. It usually occurs as large unilateral tumour with a well-defined capsule and is composed of loose sheets or compact cords of neoplastic cells interspersed with a delicate stroma (Reece, 2003).

Seminomas have been reported in fowl (Campbell, 1951), ducks, quail and budgerigars (Reece, 2003). Metastasis is not common but has been reported to occur to the liver (Petрак & Gilmore, 1982). A case of unilateral seminoma with metastases to multiple organs is reported in a Mallard duck (*Anas platyrhynchos*).

Results

Formatted: Font: Bold

Case report. A 3-year-old male Mallard duck (*Anas platyrhynchos*) was reported to be dull and depressed for some days before it was presented for clinical examination. The duck belonged to a flock of 31 free-living Mallard ducks on the banks of the town's canal. No other clinical signs were observed and the bird was euthanatised. On opening the coelomic cavity, the surface of the liver had multifocal to coalescent regular circular umbilicated greyish-white spots. The visceral peritoneum lining the intestine from duodenum to rectum presented multiple rough, greyish-white, 0.5 to 2.5 cm nodular masses. The pancreas appeared similarly affected. The right testis was diffusely enlarged, with the shape retained, measuring 3.5 by 6.0 cm (Figure 1) and weighing 120 g. The testis was firm, smooth and delimited by a distinct capsule, derived from the tunica albuginea. On the cut surface, it had a homogeneous glistening grey/white appearance with scattered areas of discoloration reflecting haemorrhage and necrosis. The left testis was atrophic. No other organs appeared macroscopically affected.

Histological examination. Representative samples from testis, liver, intestine, lung, heart, spleen and kidney were collected, immediately fixed in 10% neutral buffered formalin and routinely processed for histopathology. Paraffin-embedded sections were cut at 4 µm and stained with haematoxylin and eosin.

Histologically, the right testis parenchyma was diffusely affected by sheets of large round to polyhedral neoplastic cells, with conspicuous vesicular nuclei having distinctly granular chromatin and prominent nucleoli (Figure 2). The cytoplasm was scant and palely acidophilic. No multinucleated cells were evident, while mitotic figures were frequent (1-3 per high power field). Multiple necrotic foci were also present. Individual cell necrosis and vacuolated histiocytes scattered in the parenchyma produced a 'starry-sky' appearance. The tubular structure of the parenchyma was completely replaced by the tumour growth with the exception of few marginal zones, where the tubules still retained their normal features. Spermatoocytes were not evident in the tubular lumen. The stroma was characterised by delicate fibrillar structure originating from the capsule and contained scattered aggregates of lymphocytes. Neoplastic emboli were observed in the blood vessels of the tunica albuginea, while lamination of neoplastic cells along the external surface of the testicular capsule was indicative of local invasiveness (Figure 3). A similar histopathological picture was observed in tissue sections taken from various locations in the testis.

The liver parenchyma was extensively replaced by multiple well circumscribed nodular infiltrates of neoplastic cells with the same features as described in the testis. Both the subcapsular and the inner part of the organ were affected. Areas of vacuolar degeneration were also present. Scattered nodular neoplastic infiltration of the visceral peritoneum at the level of the duodenal loop left only a small portion of the pancreas unaltered. Most of the pancreas was replaced by neoplastic cell aggregates accompanied by reactive connective tissue proliferation (desmoplasia). The nodules present on the visceral peritoneum lining the

Formatted: Indent: First line: 35.4 pt

intestine were composed of neoplastic cells arranged on a delicate fibrillar structure showing the same features already described in the primary tumour. The blood vessels of the muscular tunica and peritoneum of the intestine contained emboli of neoplastic cells. In addition, neoplastic cell proliferation in the form of individual foci or extensive infiltration of the intestine peritoneum was observed (Figure 4).

Neoplastic infiltrates with similar features to those of the primary tumour and of the metastases were microscopically detected in the lung (Figure 5). Multiple small to discrete nodular aggregates of neoplastic cells were scattered throughout the lung lobules. Neoplastic emboli were observed in the lumen of blood vessels. No other organs revealed neoplastic changes on histology.

Based on the histological findings, the cause of the enlarged testis and of the nodular growths on liver, pancreas and visceral peritoneum was diagnosed as seminoma with hepatic, pancreatic, pulmonary and peritoneal metastasis.

Discussion

Seminoma has been previously observed in duck (Ganorkar & Kurkure, 1998), pigeon (Turk *et al.*, 1981), cockerel (Campbell, 1969), budgerigar (Arnall, 1958; Frost, 1961; Beach, 1962), Jardine babbler (Lombard & Witte, 1959), Amazon green parrot (Blackmore, 1965) and collared turtle dove (Rewell, 1948). Bilateral occurrence in black swan (Goto *et al.*, 1986) was also reported. Seminomas have occurred most commonly in birds over 5 years of age and were, therefore, seen more commonly in pet birds (Petrak & Gilmore, 1982). Incidence and importance of neoplasms in poultry can be generally estimated only. The incidence of the neoplasms other than lymphoid tumours appears to be low and of questionable economic significance (Fadly, 2003). In fact, the life span of commercially raised chickens and turkeys

Formatted: Justified

Formatted: Font: Bold

is generally short and may be less than that required for development of some non-virally induced tumours (Reece, 2003).

Among mammals, seminomas are most common in the dog, in which they are relatively common, but seminoma has also been reported in the stallion, ram, bull, goat, and cat (MacLachlan & Kennedy, 2002).

Seminoma is a malignant neoplasia composed of large uniform cells that resemble primordial germ cells. In spite of its malignant histological appearance, it is usually difficult to judge the malignant potential of this tumour based solely on histological evaluation of the primary neoplasm. The infiltration of tumour cells into vessels or tissues adjacent to the testicle, such as tunica albuginea, epididymis, or spermatic cord is evidence of malignancy (MacLachlan & Kennedy, 2002). In birds, metastasis is not common but has been reported to occur to the liver (Petraik & Gilmore, 1982). In mammals, metastasis often occurs to the regional lymph nodes, but widespread dissemination to internal organs also can occur (MacLachlan & Kennedy, 2002).

This is the first known report of unilateral seminoma with multiple metastases to liver, pancreas, peritoneum and lung, in a Mallard duck (*Anas platyrhynchos*).

References

Arnall, L. (1958). Experiences with cage-birds. *Veterinary Record*, 70, 120-128.

Beach, J.E. (1962). Diseases of budgerigars and other cage birds. A survey of post-mortem findings. Part III. *Veterinary Record*, 74, 63-68.

Blackmore, D.K. (1965). The pathology and incidence of neoplasia in caged birds. *Journal of Small Animal Practice*, 6, 15-20.

Campbell, J.G. (1951). Some unusual gonadal tumours of the fowl. *British Journal of Cancer*, 5, 69-82.

Formatted: Indent: First line: 35.4 pt

Formatted: Indent: Left: 0 pt, Hanging: 28.35 pt

Formatted: Font: Italic

Formatted: Font: Italic

Formatted: Font: Italic

Campbell, J.G. (1969). *Tumours of the Fowl*. London: Heinemann.

Fadly, A.M. (2003). Neoplastic Diseases: Introduction. In Y.M. Saif, H.J. Barnes, J.R.

Glisson, A.M. Fadly, L.R. McDougal, & D.E. Swayne (Eds.), *Diseases of Poultry*. 11th edn (pp. 405-407). Ames: Iowa State Press.

Frost, C. (1961). Experiences with pet budgerigars. *Veterinary Records*, 73, 621-626.

Ganorkar, A.G. & Kurkure, N.V. (1998). Bilateral seminoma in a duck (*Anas platyrhynchos*).

Avian Pathology, 27, 644-645.

Formatted: Font: Italic

Goto, N., Mitamura, M., Fujii, S. & Sato, A. (1986). A case of seminoma in black swan.

Japanese Journal of Veterinary Science, 48, 1297-1299.

Formatted: Font: Italic

Lombard, L.S. & Witte, E.J. (1959). Frequency and types of tumors in mammals and birds of the Philadelphia Zoological Garden. *Cancer Research*, 19, 127-141.

Formatted: Font: Italic

MacLachlan, N.J. & Kennedy, P.C. (2002). Tumors of the genital systems. In Meuten, D.J.

(Ed.), *Tumors in Domestic Animals*. 4th edn (pp. 547-573). Ames: Iowa State Press.

Petrak, M.L. & Gilmore, C.E. (1982). Neoplasms. In Petrak, M.L. *Diseases of Cage and*

Aviary Birds. 2nd edn (pp. 606-637). Philadelphia: Lea & Febiger.

Reece, R.L. (2003). Other Tumors of Unknown Etiology. In Y.M. Saif, H.J. Barnes, J.R.

Glisson, A.M. Fadly, L.R. McDougal, & D.E. Swayne (Eds.), *Diseases of Poultry*. 11th edn (pp. 541-564). Ames: Iowa State Press.

Rewell, R.E. (1948). Seminoma of the testis in a collared turtle dove (*Streptopelia risoria*).

Journal of Pathology and Bacteriology, 60, 155.

Formatted: Font: Italic

Turk, J.R., Kim, J. & Gallina, A.M. (1981). Seminoma in a pigeon. *Avian Diseases*, 25, 752-

755.

Figure legends**Formatted:** Font: Bold

Figure 1. *Neoplastic testis of duck, with liver and visceral peritoneum showing multiple nodular metastases.*

Formatted: Font: Bold**Formatted:** Font: Italic

Figure 2: *Right testis parenchyma was diffusely affected by sheets of large round to polyhedral neoplastic cells, with conspicuous vesicular nuclei having distinctly granular chromatin and prominent nucleoli. Mitotic figures were frequently observed. H&E stain. Bar = 25 μ m.*

Formatted: Font: Bold**Formatted:** Font: Italic

Figure 3. *Neoplastic emboli were observed in the blood vessels of the tunica albuginea, while lamination of neoplastic cells along the external surface of the testicular capsule was indicative of local invasiveness. H&E stain. Bar = 50 μ m.*

Formatted: Font: Bold**Formatted:** Font: Italic

Figure 4. *Neoplastic cell emboli in blood vessels, individual foci in the muscular tunica and extensive infiltration of the peritoneum were observed in the intestine wall. H&E stain. Bar = 50 μ m.*

Formatted: Font: Bold**Formatted:** Font: Italic

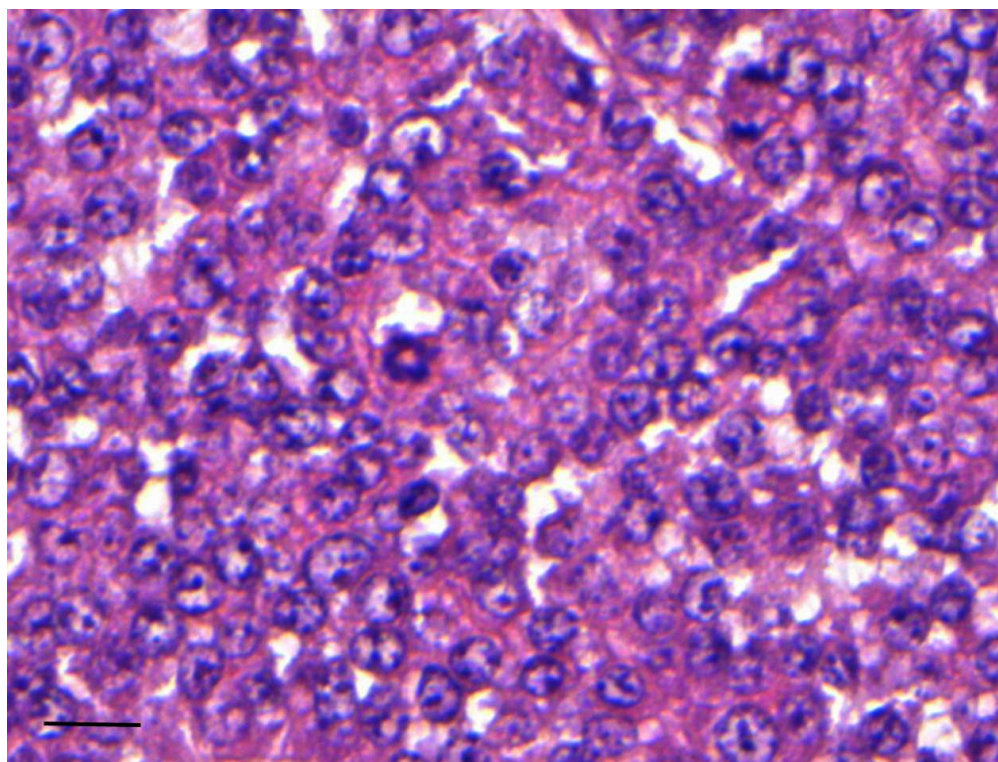
Figure 5. *Nodular aggregate of neoplastic cells in the lung parenchyma. H&E stain. Bar = 200 μ m.*

Formatted: Font: Bold**Formatted:** Font: Italic



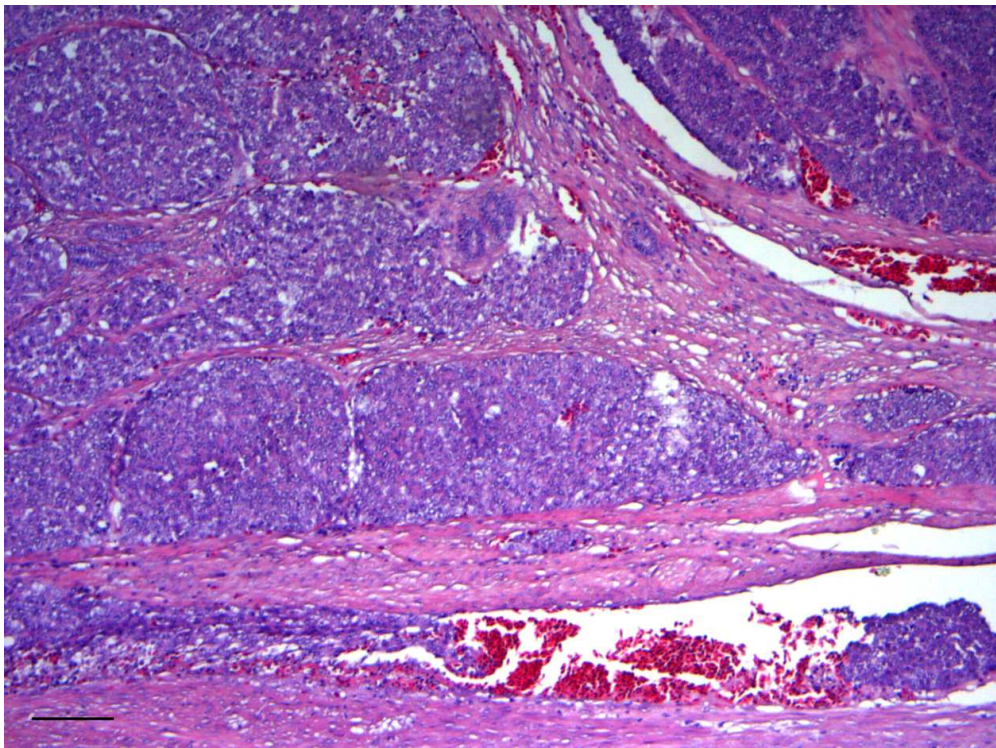
645x506mm (72 x 72 DPI)

Preview Only



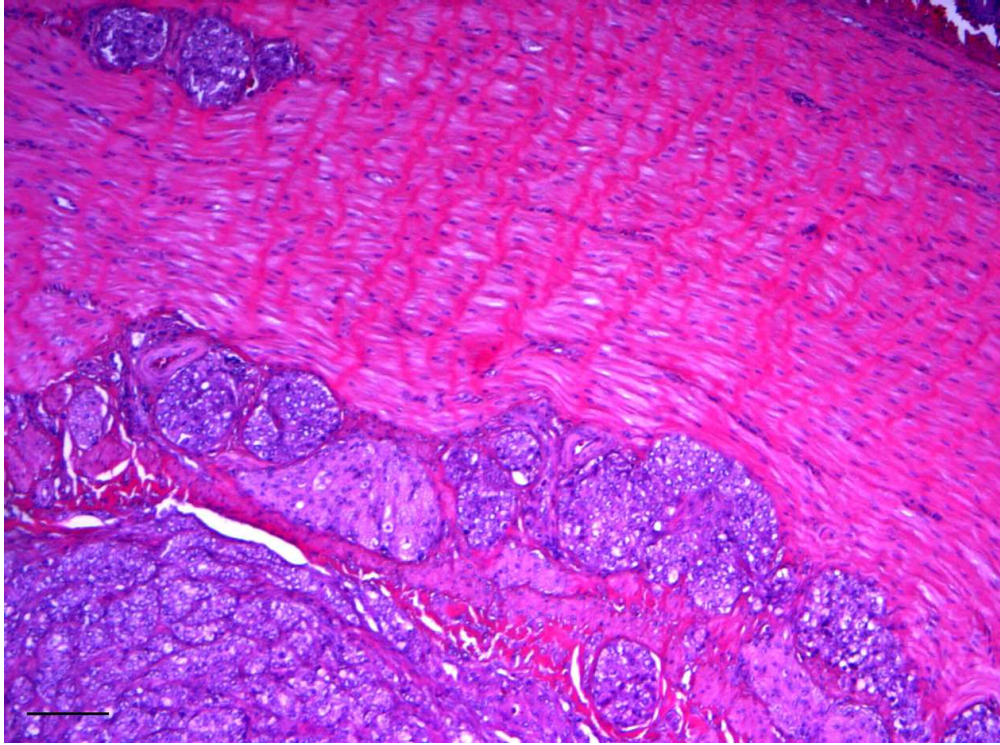
80x60mm (400 x 400 DPI)

ew Only



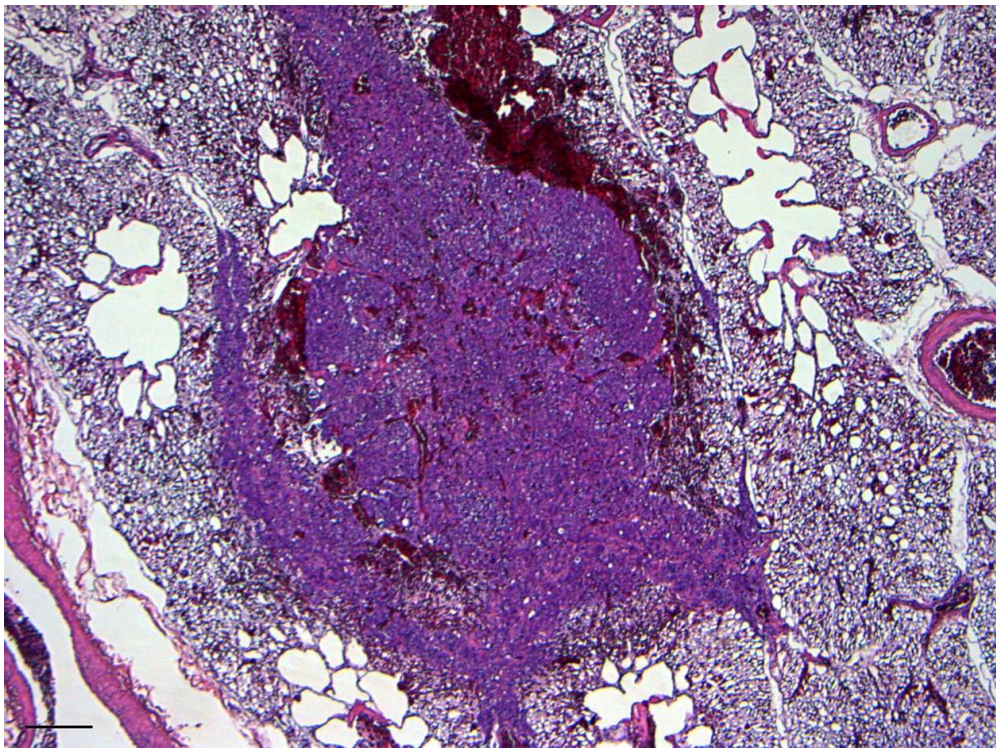
80x59mm (400 x 400 DPI)

Preview Only



80x59mm (400 x 400 DPI)

Review Only



80x59mm (400 x 400 DPI)

Preview Only