



**HAL**  
open science

## Generic model for the implementation of PLM systems in mechanical SMEs

Julien Le Duigou, Alain Bernard, Nicolas Perry, Jean-Charles Delplace

► **To cite this version:**

Julien Le Duigou, Alain Bernard, Nicolas Perry, Jean-Charles Delplace. Generic model for the implementation of PLM systems in mechanical SMEs. 7th International Product Lifecycle Management Conference, Jul 2010, Bremen, Germany. pp.200-209. hal-00539990

**HAL Id: hal-00539990**

**<https://hal.science/hal-00539990>**

Submitted on 23 Jan 2012

**HAL** is a multi-disciplinary open access archive for the deposit and dissemination of scientific research documents, whether they are published or not. The documents may come from teaching and research institutions in France or abroad, or from public or private research centers.

L'archive ouverte pluridisciplinaire **HAL**, est destinée au dépôt et à la diffusion de documents scientifiques de niveau recherche, publiés ou non, émanant des établissements d'enseignement et de recherche français ou étrangers, des laboratoires publics ou privés.

---

## Generic model for the implementation of PLM systems in mechanical SMEs.

---

Julien Le Duigou<sup>1</sup>, Alain Bernard<sup>1</sup>, Nicolas Perry<sup>2</sup>, Jean-Charles Delplace<sup>3</sup>

<sup>1</sup>IRCCyN, Ecole Centrale de Nantes  
1, rue de la Noë - BP 92 101 - 44321 Nantes Cedex 03  
Tel: +33 (0)2 40 37 69 69 Fax: +33 (0)2 40 37 69 30  
[julien.leduigou@irccyn.ec-nantes.fr](mailto:julien.leduigou@irccyn.ec-nantes.fr), [alain.bernard@irccyn.ec-nantes.fr](mailto:alain.bernard@irccyn.ec-nantes.fr)

<sup>2</sup>LGM<sup>2</sup>B, Université de Bordeaux 1  
15, rue Naudet – CS 10207 - 33175 Gradignan Cedex  
Tel.: +33 (0)5 56 84 58 45 Fax: +33 (0) 5 56 84 58 43  
[nicolas.perry@iut.u-bordeaux1.fr](mailto:nicolas.perry@iut.u-bordeaux1.fr)

<sup>3</sup>Cetim  
57, avenue Félix Louat – 60304 Senlis Cedex  
Tel.: +33 (0)3 44 67 30 00 Fax: +33 (0)3 44 67 34 40  
[jean-charles.delplace@cetim.fr](mailto:jean-charles.delplace@cetim.fr)

**Abstract:** To improve the performance of extended enterprises, SMEs must be integrated. This integration must be done on several levels, including the PLM level. PLM is underdeveloped in SMEs mainly because of their difficulties in implementing information systems. This work aims to provide a modelling framework to facilitate the implementation of PLM systems in mechanical SMEs. Our approach offers a generic model for the creation of processes and data models. These models are explained, and then the scope and the improvement they provide are considered.

**Keyword:** Product Lifecycle Management (PLM); Modelling Framework; Generic Model; Information System

---

### 1 PLM in mechanical SMEs

SMEs of the mechanical field have to integrate the different extended enterprises of their customers. This integration is facilitated by the implementation of information systems like PLM that structure and centralize product information. Nevertheless the SMEs do not readily implement these systems [1, 2], while they recognize their usefulness [2].

Recent surveys evaluate the main difficulties in the implementations of PLM systems in SMEs [4, 5]. Combined with previous studies in mechanicals SMEs [6], it results that the main difficulties that arise for the implementation of PLM system for SMEs are:

- The match between the functionalities proposed by the actual software and the needs of some kind of enterprise, especially the raw part makers.
- The difficulty of modelling processes of the company and data model. The

Copyright © 2010 Inderscience Enterprises Ltd.

modelling skills are not sufficiently present in SMEs.

- The lack of interoperability between PLM and CAD, ERP and PLM of partner companies.

To solve these problems, section 2 explore existing product models for PLM. Section 3 explains the proposed modeling framework. The first part introduces the global research approach used and the generalization method. The second part presents the generic model obtained before explaining how to use it.

## **2 PLM models**

The product models structure information of the company. The product models support the business functionalities required by SMEs, facilitate the creation of specific models and improve the interoperability of the PLM system with other information systems.

The product modelling has been introduced in Europe in the early 90s by Dupinet [7] and Krause [9], then by Tichkiewitch and Bernard to manage product information in multi-views and multi-actors context [10, 11].

All these models use information, some aimed at structuring information (such as FBS-PPRE [12] and IPPOP [13]), others focus on reuse (patterns, e.g. Gzara patterns [14]), or others focus on exchange (like AP214 [15] or PLCS [16] both from STEP). In the context of PLM systems, these generic models should be adapted. The product models can be used, but they are both too complex and too generic for SMEs.

The use of these models in industrial context requires modifications, adaptations and specialisations. Some works deal with the specialisation and consolidation of generic models, especially STEP [17, 18], but use a top down approach to complete them, and do not fully meet the industrial needs. Others, using a bottom up approach, use frameworks like Zachman [19] or Cimosà [20] to create their own models [21, 22] but they lose the benefit of interoperability of the generic model.

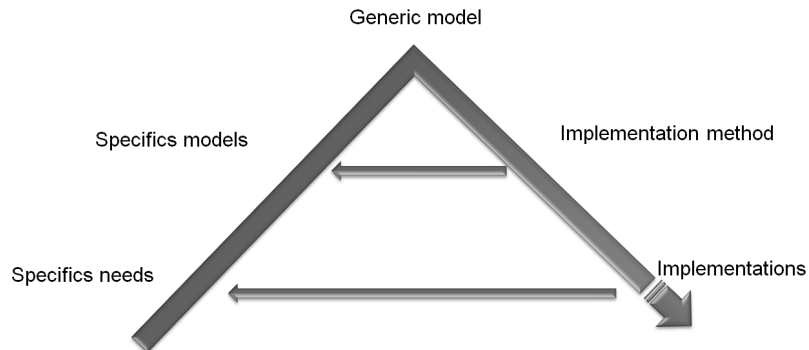
The next section will propose a framework adapted from GERAM [23] containing a bottom up method to get a generic model and a second method to specialize the generic model for a specific domain or company.

## **3 Modelling framework**

### *3.1 Research approach and generalisation method*

To propose a framework that facilitates business processes modelling and business objects modelling by improving the functionalities of PLM and system interoperability, the proposed approach reverses the traditional V cycle (Figure 1). The approach begins with a rising and inductive step formalizing the generic model. Three month of immersions in three representative companies give results for the needs of SMEs about PLM, processes to implement in companies to address these needs and data structure that can automate these processes [24]. These results are then aggregated to create a generic model.

*Generic model for the implementation of PLM systems in mechanical SMEs.*



**Figure 1** Research approach

To generalise from three specific models to one generic model, the following method is applied:

1. Select the objects that deal with PLM. Indeed the specific models contain specific objects, on the company's business.
2. Group objects by theme and identify generic objects representing each group. This phase is performed by a cognitive analysis of the modeller based on a semantic analysis.
3. Construct generic objects. This step is performed by an extraction of the intersection of attributes and methods.
4. Link the different generic objects. This is done by identifying the various links between specific objects of different groups.

This method is applied on the three specific models to obtain a generic model that could be used in the three representative pilot companies. The next section will explain the model obtained.

### *3.2 Presentation of the generic model and specialisation method*

The different identified objects are activity, product, material, function, resource, trigger, organization and document. The activity specializes in task and operation, the organization in customer and supplier and the resource in material, human and software. They are represented in a UML class diagram (Figure 3).

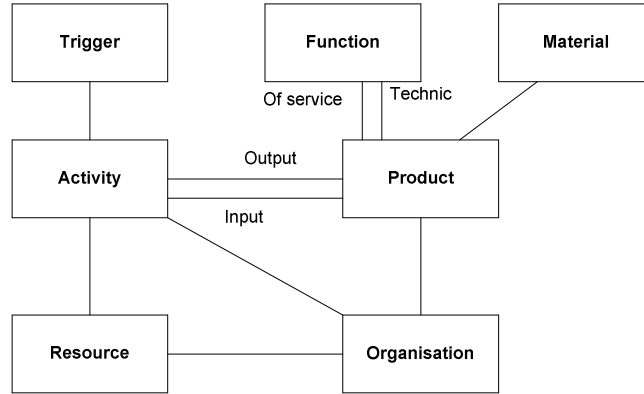


Figure 3 Simplified model

The product model (Figure 4), the activity model (Figure 5) and the resource model (Figure 6) will be explained.

The product is composed of other products, which may be optional. A component can have alternative components in an assembly context. The product has different versions. These versions have states (creation, in validation, validated, obsolete...) and attached documents. The product is linked to the activity through input and output. A product may be the output of an activity and the input of another. The structure of the product by product (assembly) – activity – product (component) decomposition gives different structures depending on the decomposition activity (assembling, maintaining, decommissioning...). The product is also related to the function, as a technical function or a service function via the selected link. A technical function for a component in an assembly becomes a service function for this component when it is alone. This design allows a functional view of the product structure by a decomposition product (assembly) – technical function = service function– product (component).

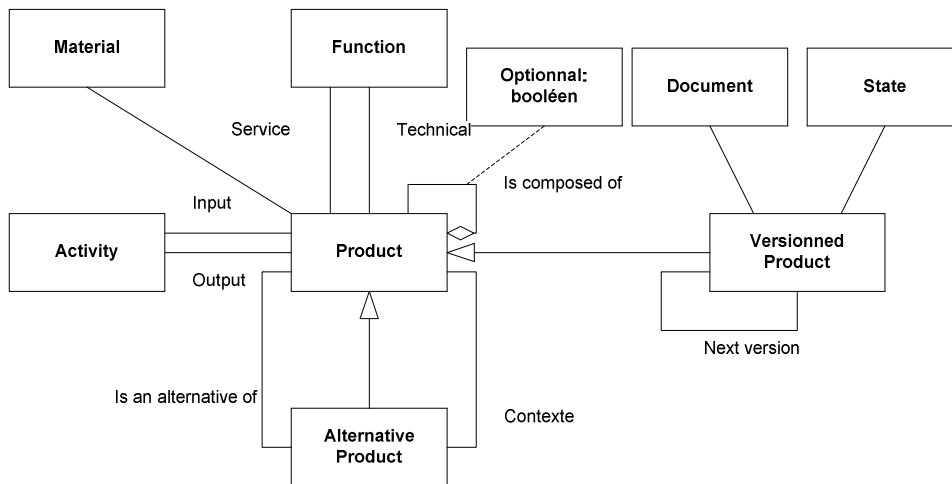
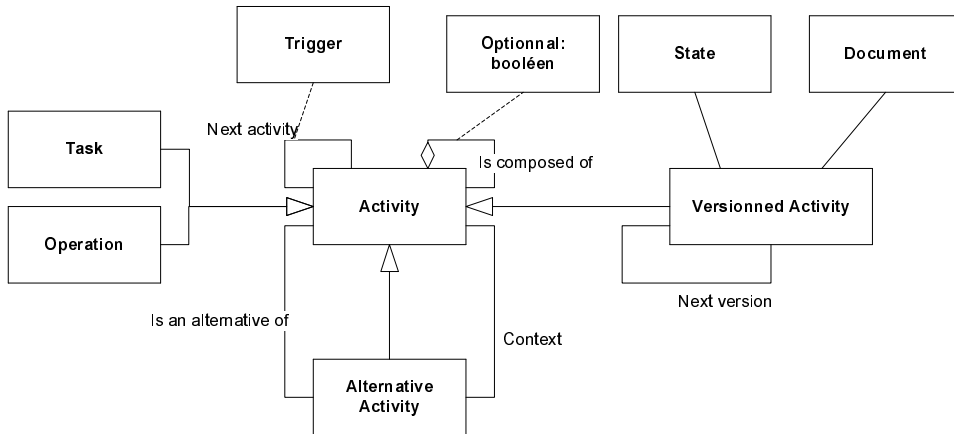


Figure 4 Product model

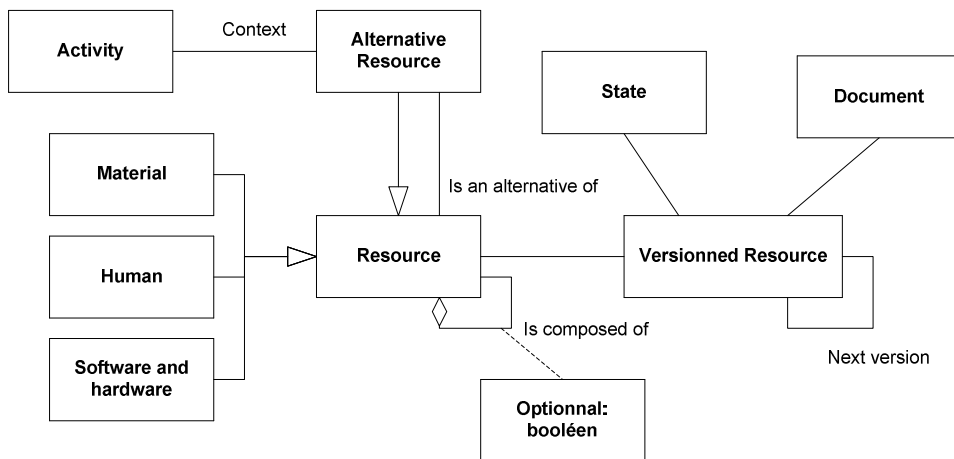
*Generic model for the implementation of PLM systems in mechanical SMEs.*

As the product model, activity has versions that have states and documents. The activity can be composed of other activities which may be optional. Activity can have an alternative activity in a parent activity context (i.e. a process). In addition, the activities are ordered through the link “next activity”. A trigger activates this link to go from one activity to the other.



**Figure 5** Activity model

The resource has also versions, with states and documents. The resource can be composed of other resources which may be optional. Moreover, the resource may have an alternative resource for a given activity.



**Figure 6** Resource model

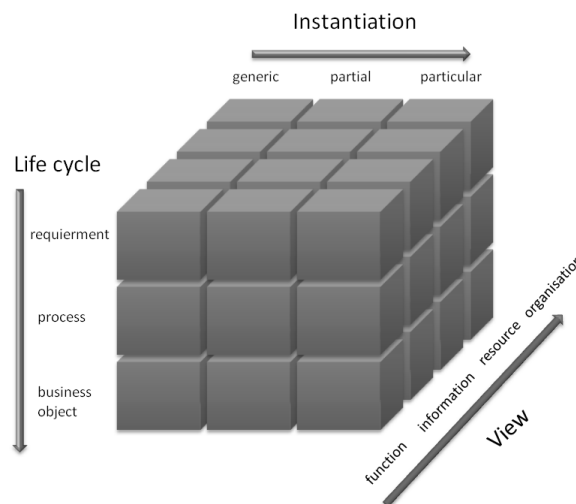
Figure 8 shows the framework adapted from GERAM with an abscissa representing

the needs, processes and business objects. The ordinate represents the instantiation of components: generic, partial or particular levels. And the depth represents the different views of the system: function, information, resource and organization.

To reach the specific needs of the companies and obtain specific models, the instantiation view specialises the objects of the generic model for each domain and for each company. Three levels are used:

- The generic level: The generic model has been defined in this paper. The objects of this model are generic and can be used in any kind of company.
- The partial level: This model is specialized from the generic model and expresses all the objects of one particular domain, e.g. machining, forging, stamping...
- The particular level: It is the company model. It is defined from the partial model (or directly from the generic model, if the partial model does not exist).

The generic model provides a common point of view of function, information and resource. It also incorporates the organizational aspect which coordinates the other points of views. The representation of the framework could then have only two dimensions, removing the view dimension. But this axis represents the different views that are modelled, even if they are all integrate in the generic model.



**Figure 8** Modelling framework

To create the company-specific models, the proposed method is as follow (Figure 9). It begins with needs analysis then continues with the formalisation of the processes necessary to address these needs. The third step is the extraction of business objects involved in these processes.

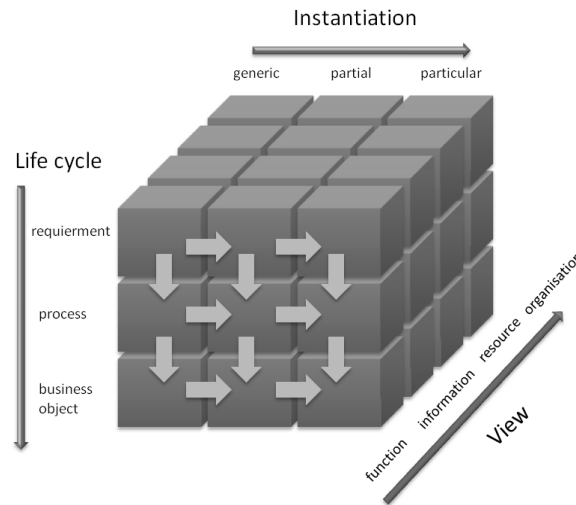
1. Identifying needs: Needs identification is made through interviews, observations and immersions in the company. Mind maps are used to formalise the requirements with the experts of the company. This identification is facilitated by the possibility of selecting the generic needs proposed in the generic map.
2. Process definition: Process modelling is done with the experts. IDEF0 diagrams are used to formalise the processes. These processes are deduced

### *Generic model for the implementation of PLM systems in mechanical SMEs.*

both the needs identified and the corresponding generic processes.

3. Definition of business objects: The identification of objects is done by extracting the inputs and outputs of processes defined in step 2. Based on the generic model, the specialisation of the generic objects leads to specific objects of the company. The UML class diagrams are used to formalise the objects of the company.

All these steps are based on generic models, the difficulty of formalizing the processes and creation of data model for a PLM system is reduced.



**Figure 9** Specialisation of the modelling framework

## **4 Discussion**

The contribution of this work is on two levels: on one hand a method of generalisation of models for a generic model and specialisation of it to particular models and on the other hand a generic model for mechanical SMEs.

The generalization method creates a generic model of various specific models. Different departments or companies may have a common view on their product-process-resource information. The exchange and sharing of information is then facilitated. The difficulty of the method is the grouping of objects that inherit from a single generic object. This is done by a semantic analysis of objects names and attributes, but in the present study, it was facilitated by the fact that the same modeler did the three specific models.

The specialization of the generic model gives a specific model adapted to the business of the company, but keeping the interoperability with other companies around the generic level. The choice of languages for the specialization is done to improve communication with company experts. The elected languages are the mind map formalism to extract requirements, IDEF0 for processes formalization and UML class diagram for the business objects representation. These languages were also used during the modeling phase in the three pilot companies and gives validated results. The use of one language such as



SysML with requirement diagrams, sequential diagrams and class diagrams could be done but we prefer languages already known by the experts.

The second point is generic model for mechanical SMEs that meet needs identified in the three pilot companies. It can be specialized in a particular model for each new company or to each department who need a specific model. The link with the rest of the extended enterprise is provided with the link to the generic model. The main weakness of this model is that it is based only on three cases, even if they are representative.

A PLM demonstrator integrating the approach and the data model has been developed. This demonstrator will be the base of a new product developed by a new society created at the end of the study.

## **5 Conclusion**

The mechanical SMEs need to integrate more and more extended enterprises PLM systems. For interest in PLM system, a framework to facilitate the processes and data modelling and to improve interoperability between their information systems is proposed. This work aims to give them a framework to integrate their functionalities through the specialization of their data model according to their field of activity. It also provides a method of specialization to create their own particular data model ensuring greater interoperability through the alignment of high semantic models (for the PLM) with specialised models for other applications (ERP, CAD and KBS).

The proposed Product Process Resource model is the result of the concatenation of models of three companies representing the needs of mechanical SMEs in terms of PLM. It may be specialized in specific models for each individual company but keeping the same structure for a high level of interoperability.

The next contribution will be using this framework and the generic model to solve the needs identified in mechanical SMEs. It will carry the processes to meet these needs with demonstrator software integrating the proposed framework and the generic model.

## **Acknowledgement**

We would like to thank companies PSL CONCEPT, CAPRICORN and SMP for allowing us to carry out our study in their companies and for their technical support.

## **References**

- 1 Balocco R., Mainetti S., Rangone A., 2006. *Innovare e competere con le ICT - Il ruolo delle tecnologie dell'informazione e della comunicazione nella crescita delle PMI*, IISole24ore, Milano.
- 2 Cetim, 2007, *Enquête de besoin sur le travail collaboratif*, Document interne.
- 3 El Kadiri, S., Pernelle, P., Delattre, M., Bouras, A., 2009. *Current situation of PLM systems in SME/SMI: Survey's results and analysis*, Proceedings of 6<sup>th</sup> International Conference on Product Lifecycle Management.
- 4 Terzi, S., Garetti, M., 2009, *Implementing PLM projects: evidences from practice*,

### ***Generic model for the implementation of PLM systems in mechanical SMEs.***

- Proceedings of 6<sup>th</sup> International Conference on Product Lifecycle Management.
- 5 Le Duigou, J., Bernard, A., Perry, N., Delplace, J.C., 2008, *Inductive approach for the specification of a generic PLM system in an extended enterprise context*. 5<sup>th</sup> international conference on Digital Enterprise Technology, 22-24 Octobre 2008, Nantes, France.
  - 6 Dupinet, E., 1991, *Contribution à l'étude d'un système informatique d'aide à la conception de produits mécaniques*, Thèse de doctorat, École Centrale Paris.
  - 7 Krause F.L., Kimura F., et al., 1993, *Product Modeling*, Annals of the CIRP, vol. 42, n° 2, pp. 695-706.
  - 8 Tichkiewitch S., 1996, *Specification on integrated design methodology using a multi-view product model*, ESDA Proceedings of the 1996 ASME System Design and Analysis Conference, vol. 80, pp. 101-108.
  - 9 Bernard, A., 1996, *Contribution à la modélisation des produits et à l'intégration des technologies productrices dans un environnement multi-acteurs*, Habilitation à Diriger des Recherches, École Centrale Paris.
  - 10 Labrousse, M., Bernard, A., 2008, *FBS-PPRE, an Enterprise Knowledge Lifecycle Model*, Methods and Tools for Effective Knowledge Life-Cycle Management, Springer-Verlag, pp. 285-307.
  - 11 Noël, F., 2006, *A dynamic multi-view product model to share product behaviors among designers: how process model adds semantic to the behavior paradigm*, Int. J. Product Life Management, vol. 1, n° 4, pp. 380-390
  - 12 Gzara, L., 2000, *Les patterns pour l'ingénierie des systèmes d'information produit*, Thèse de Doctorat, Institut National Polytechnique de Grenoble.
  - 13 ISO 10303-214, 1998, *Industrial Automation Systems and Integration - Product Data Representation and Exchange - Part 214: Application Protocol: Core Data for Automotive Mechanical Design Processes*. ISO - International Organization for Standardization.
  - 14 ISO 10303-239, 2005, *Industrial Automation Systems and Integration - Product Data Representation and Exchange - Part 239: Application Protocol: Product Life Cycle Support*. ISO - International Organization for Standardization.
  - 15 El Khalkhali, I., Ghodous, P., Martinez, M., Fravel, J., 2002, *An information infrastructure to share product models using STEP standard*, 9th IPSE international conference on concurrent engineering: research and applications, Cranfield University, 27th-31st July 2002.
  - 16 Euler Chelpin, von A., 2008, *Information modelling for the manufacturing system life cycle*, Thèse de Doctorat, Université de Stockholm.
  - 17 Zachman, J.A., 1987, *A framework for information systems architecture*. IBM Systems Journal, vol. 26, n° 3, pp. 276-292.
  - 18 Kosanke, K., Zelm, M., 1999, *CIMOSA modelling processes*, Computer in Industry, vol. 40, pp. 141-153.
  - 19 Bacha, R., 2002, *De la gestion des données techniques pour l'ingénierie de production. Référentiel du domaine et cadre méthodologique pour l'ingénierie des systèmes d'information techniques en entreprise*, Thèse de doctorat, École Centrale Paris.
  - 20 Abdmouleh, A., 2004, *Composants pour la modélisation des processus métier en productique, basé sur Cimosa*, Thèse de Doctorat, Ecole Nationale d'Ingénieur de Metz.
  - 21 GERAM, 1999, *GERAM: Generalised Enterprise Reference Architecture and Methodology v1.6.3*, IFIP-IFAC Task Force on Architectures for Enterprise Integration.
  - 22 Le Duigou, J., Bernard, A., Perry, N., Delplace, J.C., 2009, *Global approach for product data management, application to ship equipment part families*, CIRP Journal of Manufacturing Science and Technology, vol. 1, pp. 185-190.