

Figures:

Figure 1: MEB images of fracture profiles of E-CR-150ATHU-0 and of E-CR-150ATHT-0

Figure 2: Swelling ratio as a function of radiation dose a) for uncrosslinked materials (E-NC, E-NC-150ATHU) (dashed lines are guide for the eyes) b) for crosslinked materials (E-CR, E-CR-32ATHU, E-CR-150ATHU, E-CR-150ATHT) (dashed lines are guide for the eyes)

Figure 3: Soluble fraction F_p as a function of radiation dose a) for uncrosslinked materials (E-NC, E-NC-150ATHU) (dashed lines are guide for the eyes) b) for crosslinked materials (E-CR, E-CR-150ATHU, E-CR-150ATHT) (dashed lines are guide for the eyes for E-CR-150ATHU and for E-CR-150ATHT)

Figure 4: Elastic modulus at 80°C as a function of radiation dose a) for uncrosslinked materials (E-NC, E-NC-150ATHU) (dashed lines are guide for the eyes) b) for crosslinked materials (E-CR, E-CR-32ATHU, E-CR-150ATHU, E-CR-150ATHT) (dashed lines are guide for the eyes) for E-CR-150ATHU and for E-CR-150ATHT)

Figure 5: Large deformation behavior at 80°C of: a) E-CR-150ATHU, b) E-CR-150ATHT

Figure 6: Cycle area as a function of the cycle maximum true stress for E-CR-150ATHU and for E-CR-150ATHT; in insert: cyclic tensile tests at 80°C for E-CR-150ATHU-510

Figure 7: Elastic moduli as a function of the irradiation dose: a) for E-NC (experimental data, (□)) and the E-NC-150ATHU deduced matrix (○), and curve fits (dashed line A=1, bold lines A=2) ; b) for for E-CR (experimental data, (□)) and the E-CR-150ATHU deduced matrix, (○), and curve fits (dashed line A=1, bold lines A=1.5)

Figure 8: $F_p + \sqrt{F_p}$ versus irradiation dose for E-CR (experimental data (□), linear fit (dashed line) and for E-CR-150ATHU (experimental data (●), linear fit (bold line))

Figure 9: Large deformation behavior at 25°C for a) E-CR-150ATHU (Continuous lines, with U label) and for b) E-CR-150ATHT (Continuous lines, with T label); dashed lines are for E-CR at 0 kGy and at 510 kGy

E-CR-150ATHU-0

E-CR-150ATHT-0

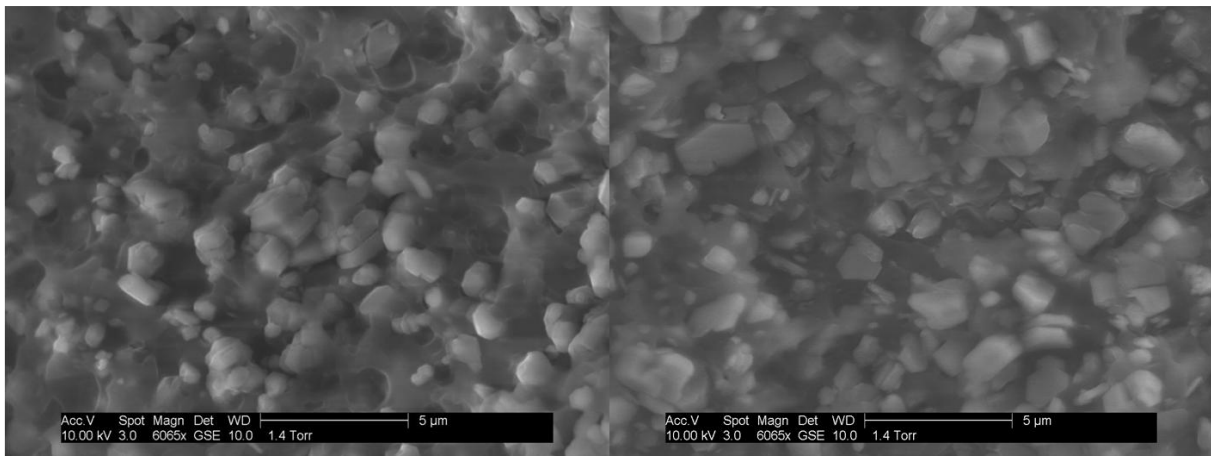


Figure 1: MEB images of fracture profiles of E-CR-150ATHU-0 and of E-CR-150ATHT-0

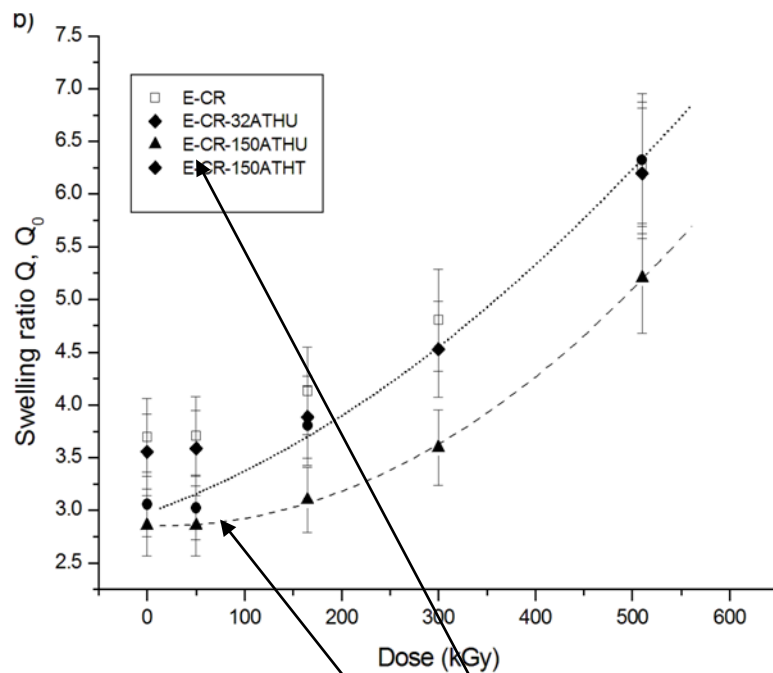
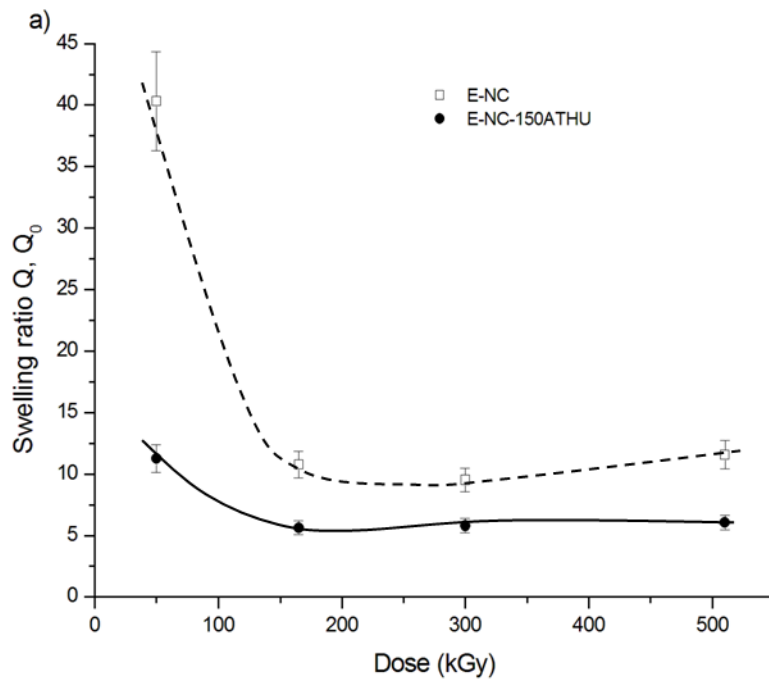


Figure 2: Swelling ratio as a function of radiation dose a) for uncrosslinked materials (E-NC, E-NC-150ATHU) (dashed lines are guide for the eyes) b) for crosslinked materials (E-CR, E-CR-32ATHU, E-CR-150ATHU, E-CR-150ATHT) (dashed lines are guide for the eyes)

PROBLEME DE LEGENDE (LOSANGE ET ROND???)

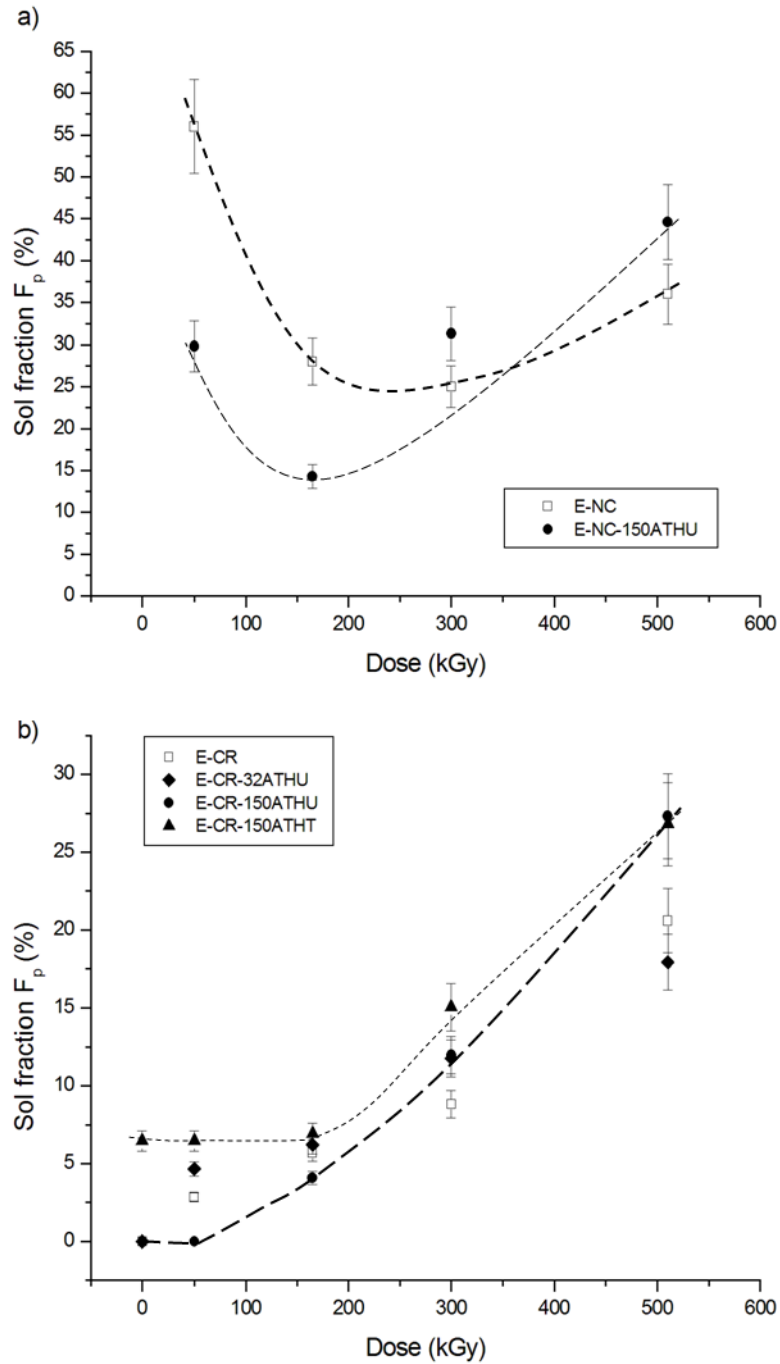


Figure 3: Soluble fraction F_p as a function of radiation dose a) for uncrosslinked materials (E-NC, E-NC-150ATHU) (dashed lines are guide for the eyes) b) for crosslinked materials (E-CR, E-CR-150ATHU, E-CR-150ATHT) (dashed lines are guide for the eyes for E-CR-150ATHU and for E-CR-150ATHT)

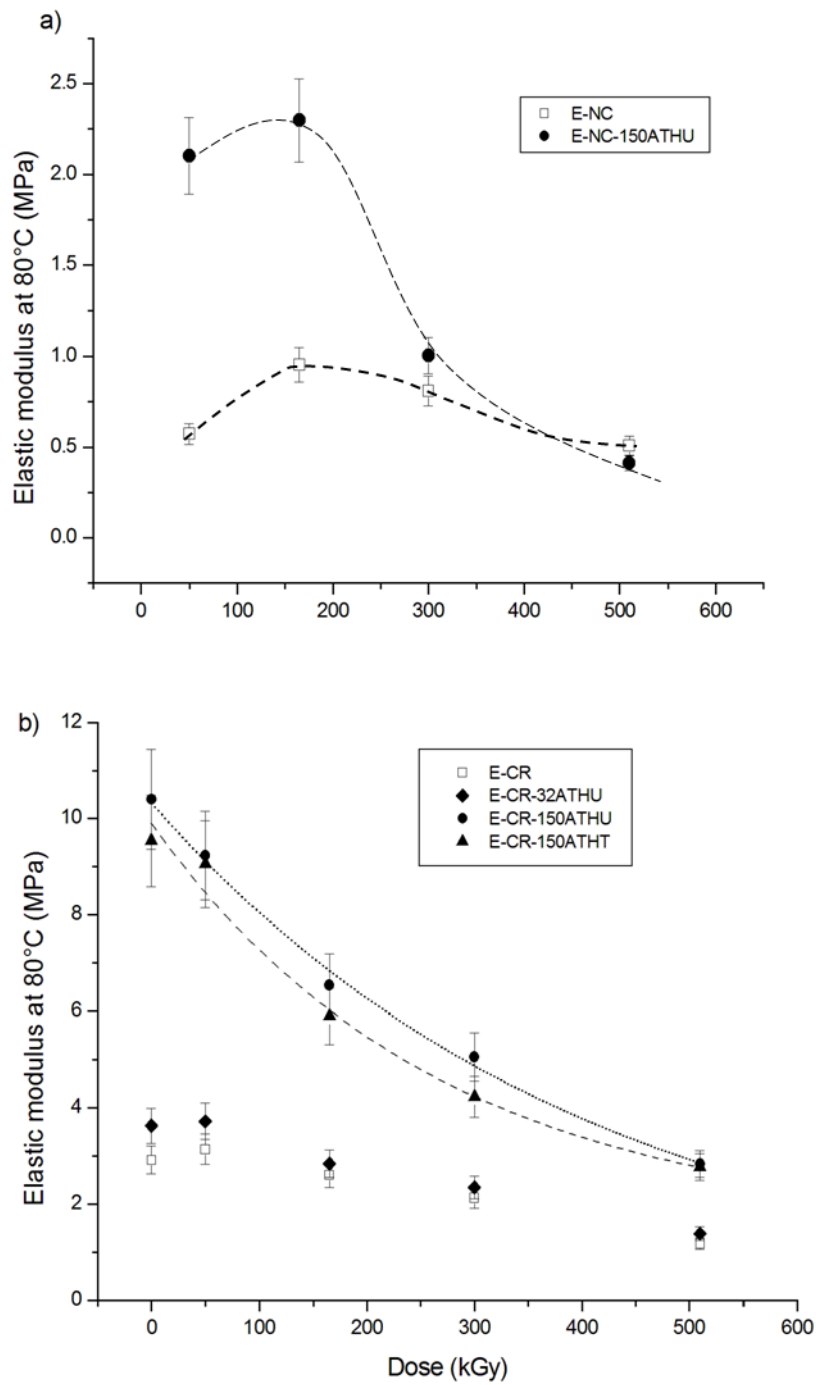


Figure 4: Elastic modulus at 80°C as a function of radiation dose a) for uncrosslinked materials (E-NC, E-NC-150ATHU) (dashed lines are guide for the eyes) b) for crosslinked materials (E-CR, E-CR-32ATHU, E-CR-150ATHU, E-CR-150ATHT) (dashed lines are guide for the eyes) for E-CR-150ATHU and for E-CR-150ATHT)

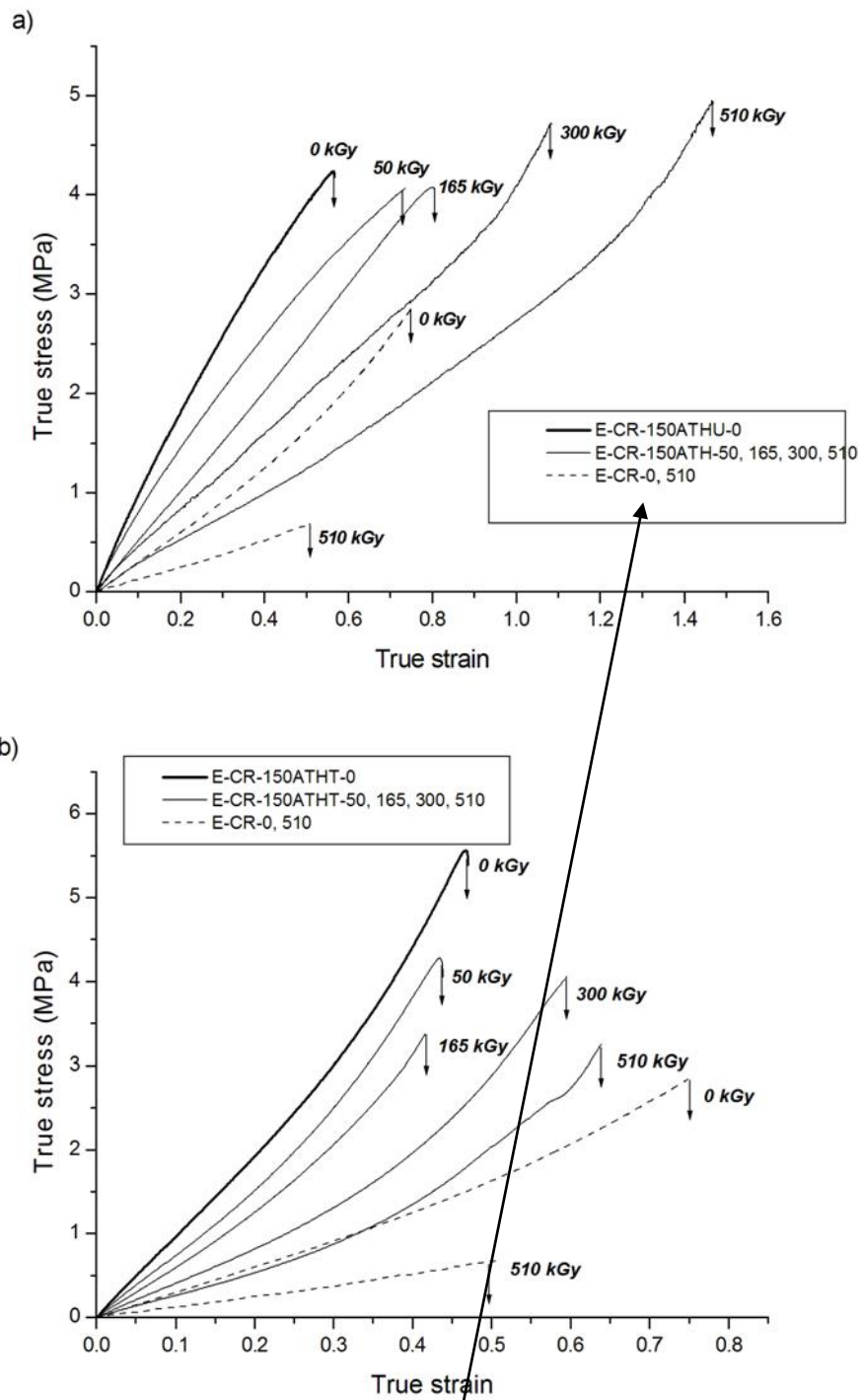


Figure 5: Large deformation behavior at 80°C of: a) E-CR-150ATHU, b) E-CR-150ATHT

La legende sort du cadre

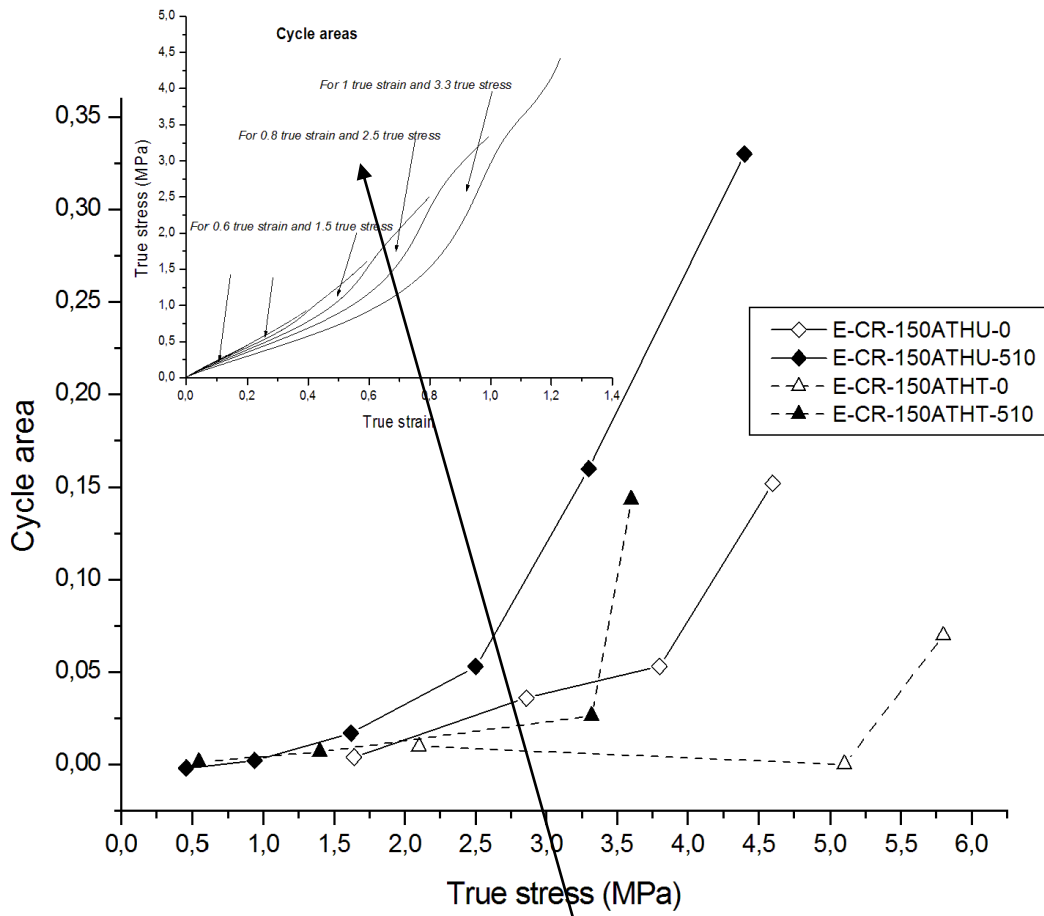


Figure 6: Cycle area as a function of the cycle maximum true stress for E-CR-150ATHU and for E-CR-150ATHT; in insert: cyclic tensile tests at 80°C for E-CR-150ATHU-510

ENLEVER LES COMMENTAIRES (trop petit)

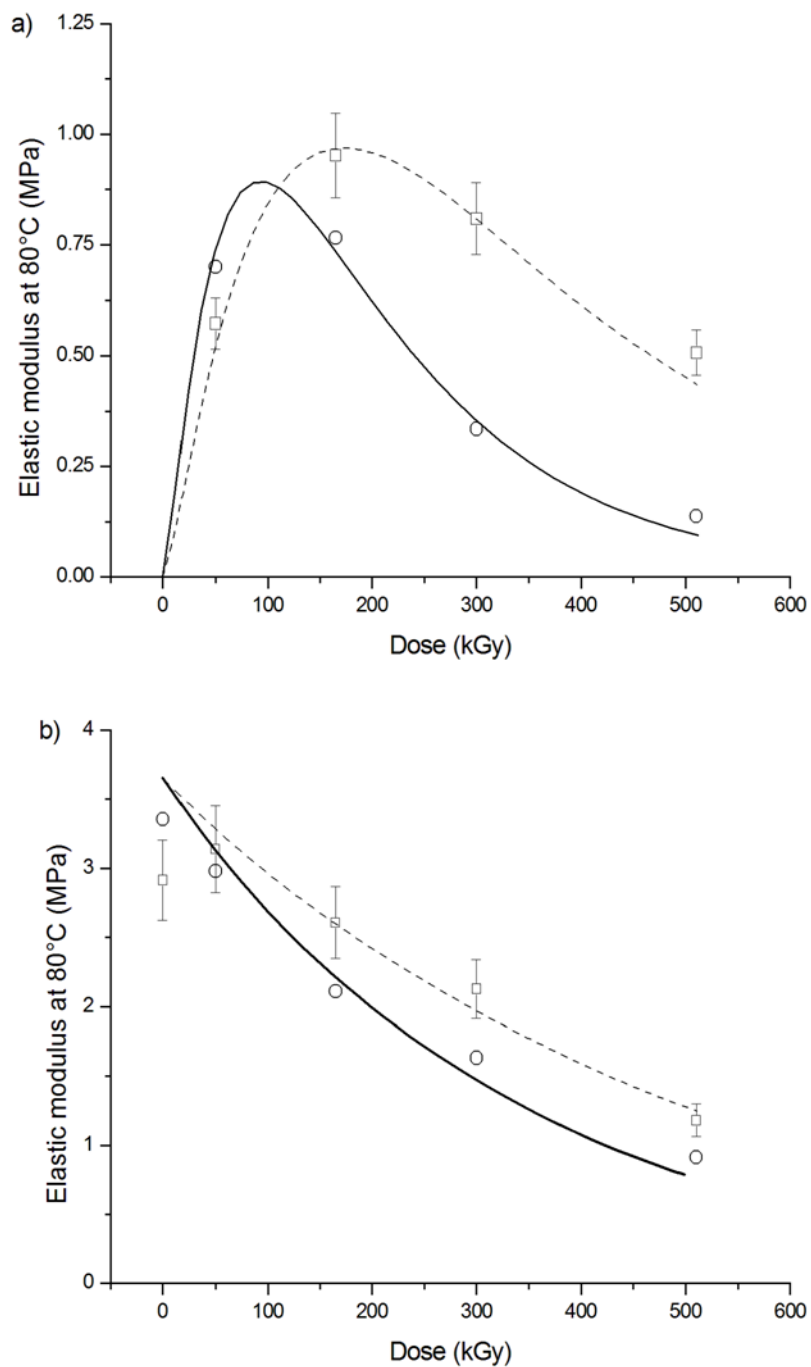


Figure 7: Elastic moduli as a function of the irradiation dose: a) for E-NC (experimental data, (□)) and the E-NC-150ATHU deduced matrix (○), and curve fits (dashed line $A=1$, bold lines $A=2$); b) for E-CR (experimental data, (□)) and the E-CR-150ATHU deduced matrix, (○), and curve fits (dashed line $A=1$, bold lines $A=1.5$)

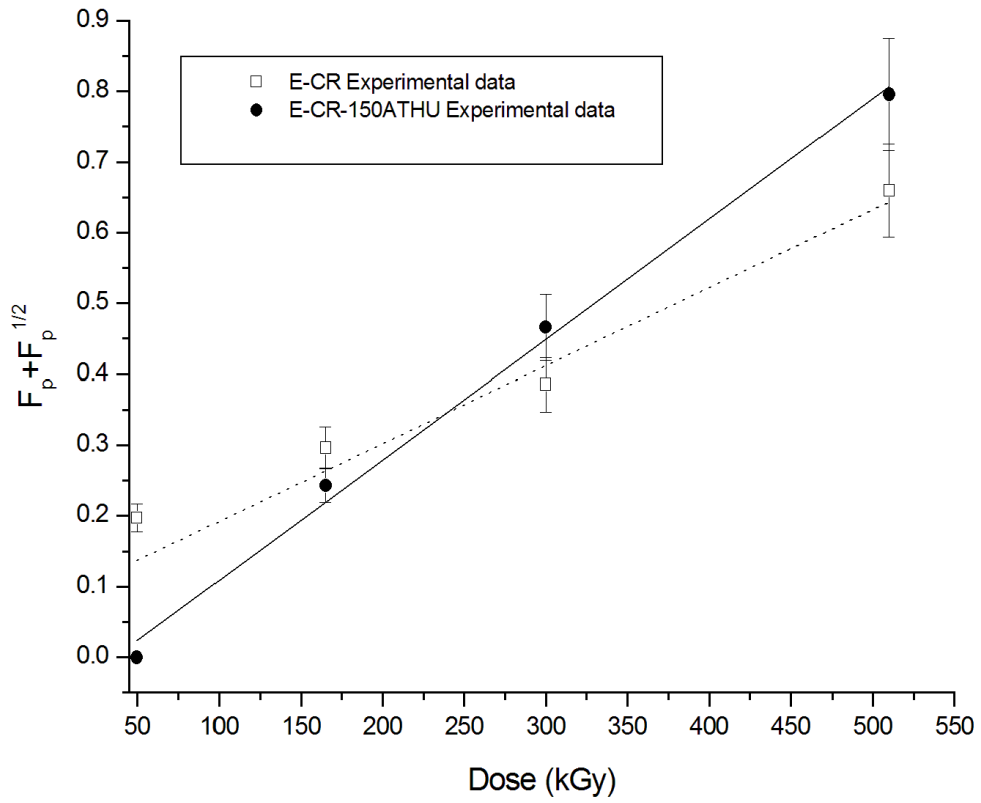


Figure 8: $F_p + \sqrt{F_p}$ versus irradiation dose for E-CR (experimental data (\square), linear fit (dashed line) and for E-CR-150ATHU (experimental data (\bullet), linear fit (bold line)

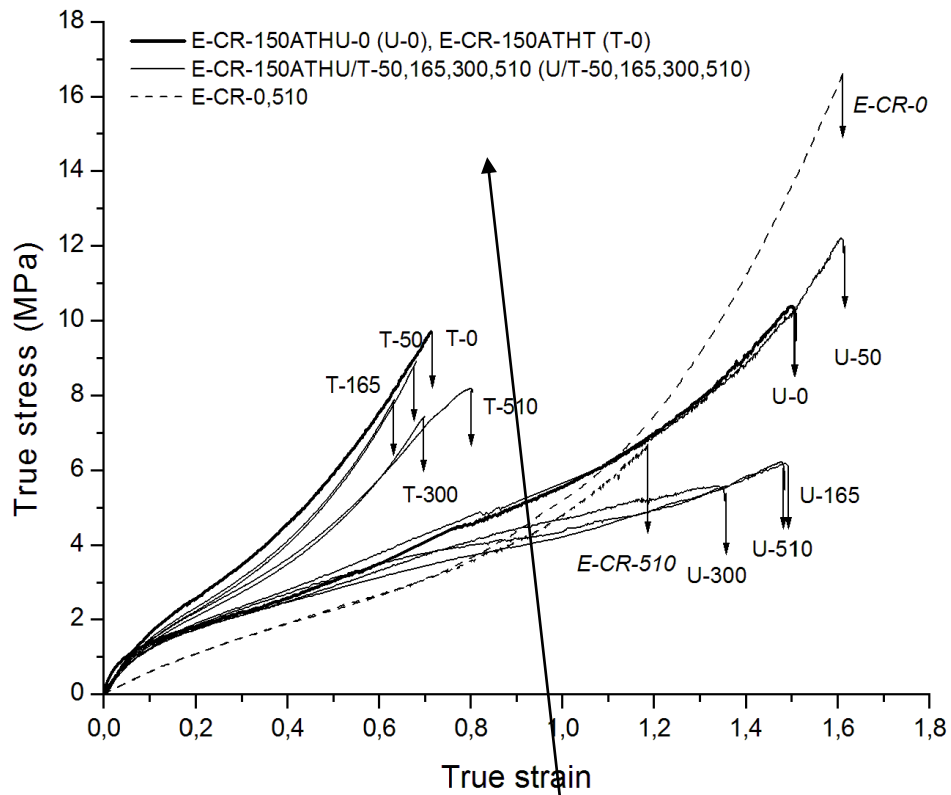


Figure 9: Large deformation behavior at 25°C for a) E-CR-150ATHU (Continuous lines, with U label) and for b) E-CR-150ATHT (Continuous lines, with T label); dashed lines are for E-CR at 0 kGy and at 510 kGy

SUPPRIMER LA LEGENDE