



**HAL**  
open science

## Predictive dynamic model of the negative lightning discharge based on similarity with long laboratory sparks. Part 2: Validation

Abderrahmane Beroual, Jean Hubert Rakotonandrasana, Issouf Fofana

### ► To cite this version:

Abderrahmane Beroual, Jean Hubert Rakotonandrasana, Issouf Fofana. Predictive dynamic model of the negative lightning discharge based on similarity with long laboratory sparks. Part 2: Validation. IEEE Transactions on Dielectrics and Electrical Insulation, 2010, 17 (5), pp.1562 - 1568. 10.1109/TDEI.2010.5595558 . hal-00539058

**HAL Id: hal-00539058**

**<https://hal.science/hal-00539058>**

Submitted on 25 Mar 2011

**HAL** is a multi-disciplinary open access archive for the deposit and dissemination of scientific research documents, whether they are published or not. The documents may come from teaching and research institutions in France or abroad, or from public or private research centers.

L'archive ouverte pluridisciplinaire **HAL**, est destinée au dépôt et à la diffusion de documents scientifiques de niveau recherche, publiés ou non, émanant des établissements d'enseignement et de recherche français ou étrangers, des laboratoires publics ou privés.

# Predictive Dynamic Model of the Negative Lightning Discharge Based on Similarity with Long Laboratory Sparks – Part 2: Validation

A. Beroual<sup>1</sup>, J-H. Rakotonandrasana<sup>1</sup> and I. Fofana<sup>2</sup>

<sup>1</sup>Ecole Centrale de Lyon, AMPERE Laboratory, CNRS UMR 5005

36 avenue Guy de Collongue 69134 Ecully, France

<sup>2</sup>Université du Québec à Chicoutimi, ISOLIME, Qc, Canada

## ABSTRACT

In this paper, a mathematical model, requiring only the cloud-ground geometry, applied voltage and some atmospheric parameters, described in the first part of our contribution, has been used to predict the main macroscopic parameters of the negative lightning discharge. The predicted parameters include the spatial and temporal evolution of the entire discharge, the current and the corresponding electrical charge, the power and energy injected into the gap and the velocity. Assessment of the temporal evolution of the return stroke current is yet another application of the model. The computed results are found to be in good agreement with data reported in the literature.

Index Terms — Negative lightning discharge, modeling, propagation, simulation

## 1. INTRODUCTION

NEGATIVE lightning discharges have been the subject of very intensive experimental Contrary to the positive lightning for which many theoretical models are available [3 - 6], research to derive models for the negative lightning is still at its earlier stages. This is due to the complexity of the mechanisms involved in the propagation processes. The development of a negative lightning discharge model allowing predicting the main macroscopic parameters will be very useful for the design and protection of engineering structures against direct and indirect strikes.

In the first part of our investigations [7], a predictive dynamic model of negative lightning discharge was proposed to predict the main macroscopic parameters of the negative lightning discharge. The work presented in this second part of these investigations is mainly focused on the validation of this model. Assuming the discharge channel to be a long conductor and by considering criteria for instabilities and some atmospheric conditions, this model enables the computation of the macroscopic parameters of the discharge such as the current evolution and the corresponding charge, the instantaneous propagation velocity, the potential drop along the discharge channel, the power and energy injected

into the gap, and a trajectory of the discharge plotted in 3D in real time using a probabilistic distribution.

## 2 SIMULATION RESULTS AND DISCUSSION

It is well-known that before a cloud-to-ground discharge, the field at the ground level is of about 10 to 15 kV/m [8]. Assuming that this field is roughly uniform between the cloud base - earth, the voltage difference (before the discharge inception) between them can be estimated to a few tens megavolts. Thus, for the validation of the model, three cloud - ground distances were considered, namely 2000, 5000 and 7500 m submitted to 35, 45 and 50 MV respectively, under a given atmospheric conditions:  $P=100$  kPa and  $T=20^{\circ}\text{C}$  at the ground level; these values being in the range of those used in the literature [9, 10]. Concerning the cloud diameter, 1 km constitutes a good dimension order [1]. The initial radius  $r_0$  of the negative leader is taken equal to 0.75 cm [1, 2, 11].

The set of equations describing the mathematical model, proposed in the part 1 [7] were derived for long sparks in laboratory. They are therefore valid for any kind of applied voltage characteristics. For instance, in the laboratory, an impulse voltage is applied to the gap and it is known that the development of the discharge is conditioned by the rate of rise of the applied voltage. For lightning discharges, these equations simplify since the applied voltage is constant.

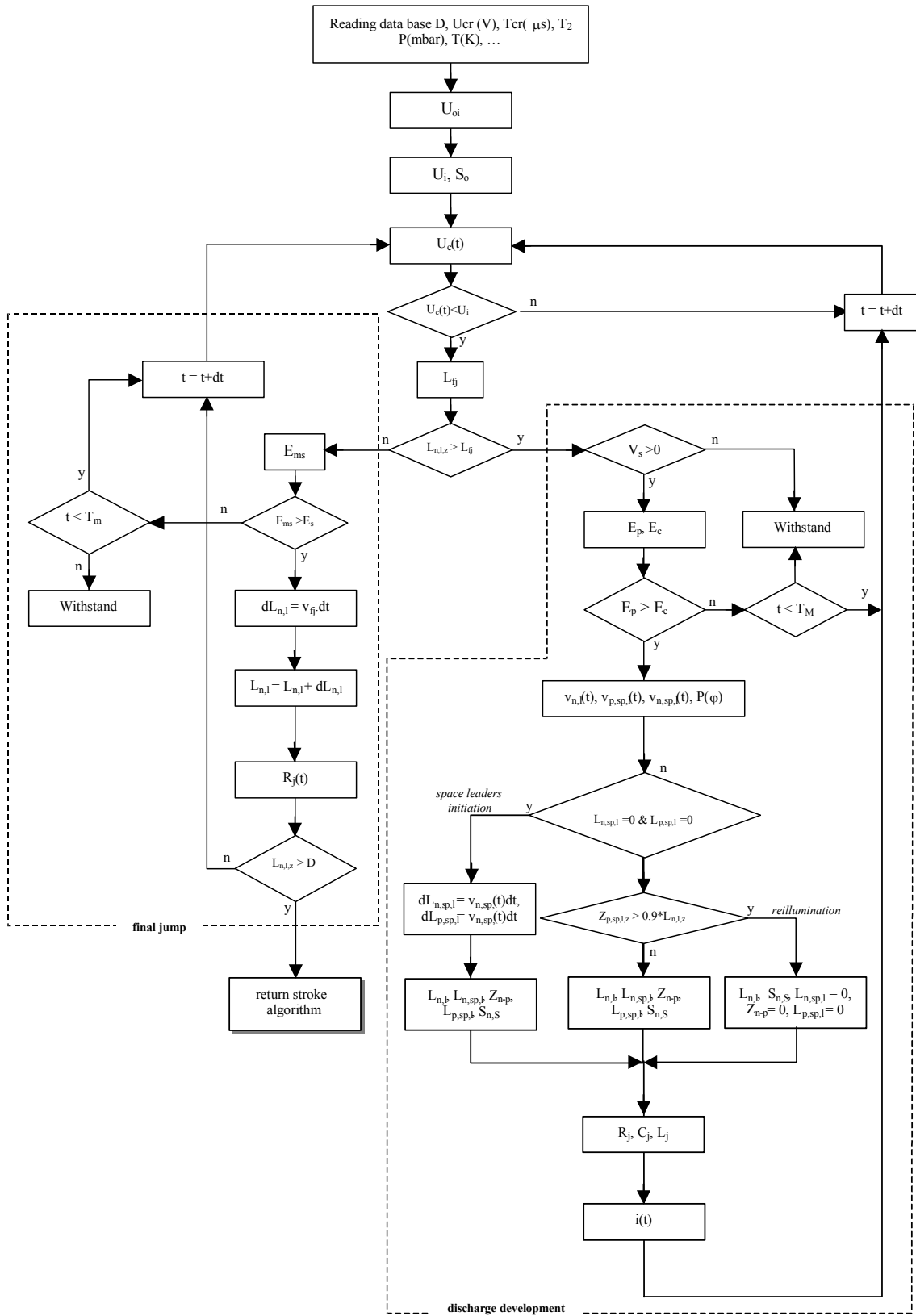


Figure 1. General flowchart of the model [7].

The simulations were performed using a software codes written in MATLAB. The block diagram is similar to that to that we used in a previous work [12] is given in Figure 1. The only input data are cloud – earth height, voltage and ambient air pressure and temperature. The sampling-time for simulation is 0.1  $\mu$ s.

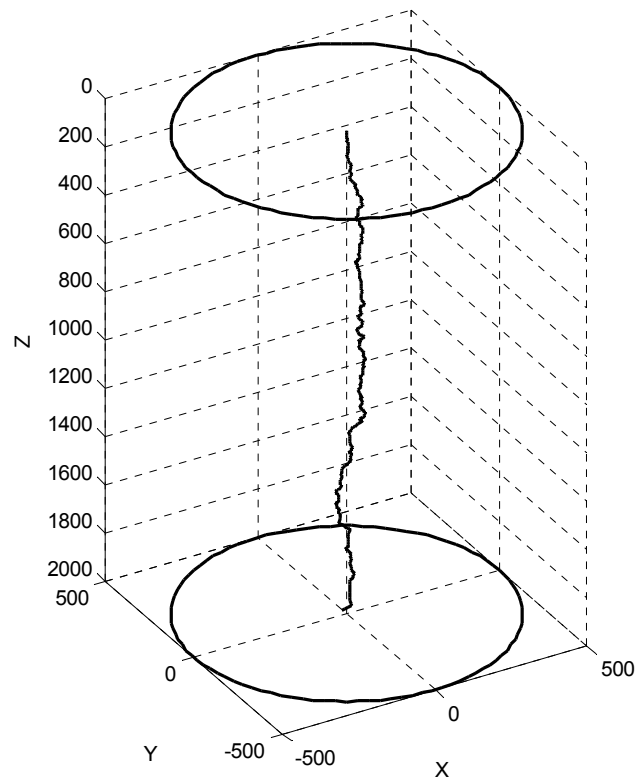
Figures 2 to 4 show some simulated results of the downward negative lightning leader characteristics. An example of trajectory is given in Figures 2a, 3a and 4a. From those results, it can be observed that the simulated current (Figures 2b, 3b and 4b), the charge (Figures 2d, 3d and 4d) and energy injected into the gap (Figures 2c, 3c and 4c) depict a real stepping. This is a well known phenomenon concerning the propagation of negative lightning. The current values are in the same range as those observed experimentally [1, 13]. Indeed, the simulated pulse currents of steps can reach a few kA. According to experimental results reported in literature, the currents depict stepwise pulses of at least 1 kA [13]. The current pulses correspond to re-illuminations. The number of these later depends on the voltage, the gap length and thence on the energy injected in the gap. It increases non-linearly with the cloud – earth gap. Moreover, the repetition time of stem occurrence lies between 0.1 and 1  $\mu$ s and the time duration, between two re-illuminations, lies between 0.125 and 0.5 ms (Figures 2b, 3b and 4b). These results are of the same order as those estimated experimentally [14, 15]. The electrical charge injected during the propagation can reach several Coulombs. The simulated stepped leader duration seems to be higher by about one order dimension than the average one obtained experimentally. The characteristics of the thermal radius are reported in Figures 2e, 3e and 4e. Its growth is of a few centimetres as observed for natural lightning. It varies with the injected charge; the higher the injected charge, the larger the radius is. The simulated leader instantaneous velocities are of a few  $10^5$  m/s (Figures 2f, 3f and 4f) and the simulated average value is of about  $3 \cdot 10^5$  m/s. Such a value is in a good agreement with that obtained experimentally from streak camera recordings, at the bottom of stepped leaders channel (i.e., near ground) during natural lightning discharge [1, 14-17]. Rubinstein et al. [14] obtained  $4.0 \cdot 10^5$  m.s<sup>-1</sup> near cloud base and  $5.2 \cdot 10^6$  m.s<sup>-1</sup> near earth with an average value of about  $2 \cdot 10^6$  m.s<sup>-1</sup>. Figures 2g, 3g and 4g depict the predicted return stroke currents. Its peak value can reach 18.5, 20.5 and 30.5 kA respectively for 2000, 5000 and 7500 m. Such values are in the range of those reported in literature [1, 18, 19]. For instance, the mean first-stroke peak current measured by K. Berger [19] for negative discharges, on Mount San Salvatore (Switzerland), is of 30 kA. Table 1 summarizes the main parameters obtained for three cloud – earth distances.

For a given voltage, the relationship giving the velocity of negative and positive discharges [7] shows that the current ( $i_L$ ) and velocity ( $v_L$ ) of the leader are related as  $v_L \sim i_L^{1/3}$ . Such a relationship has been reported by Bazelyan and Raizer for the positive discharge [2, 20].

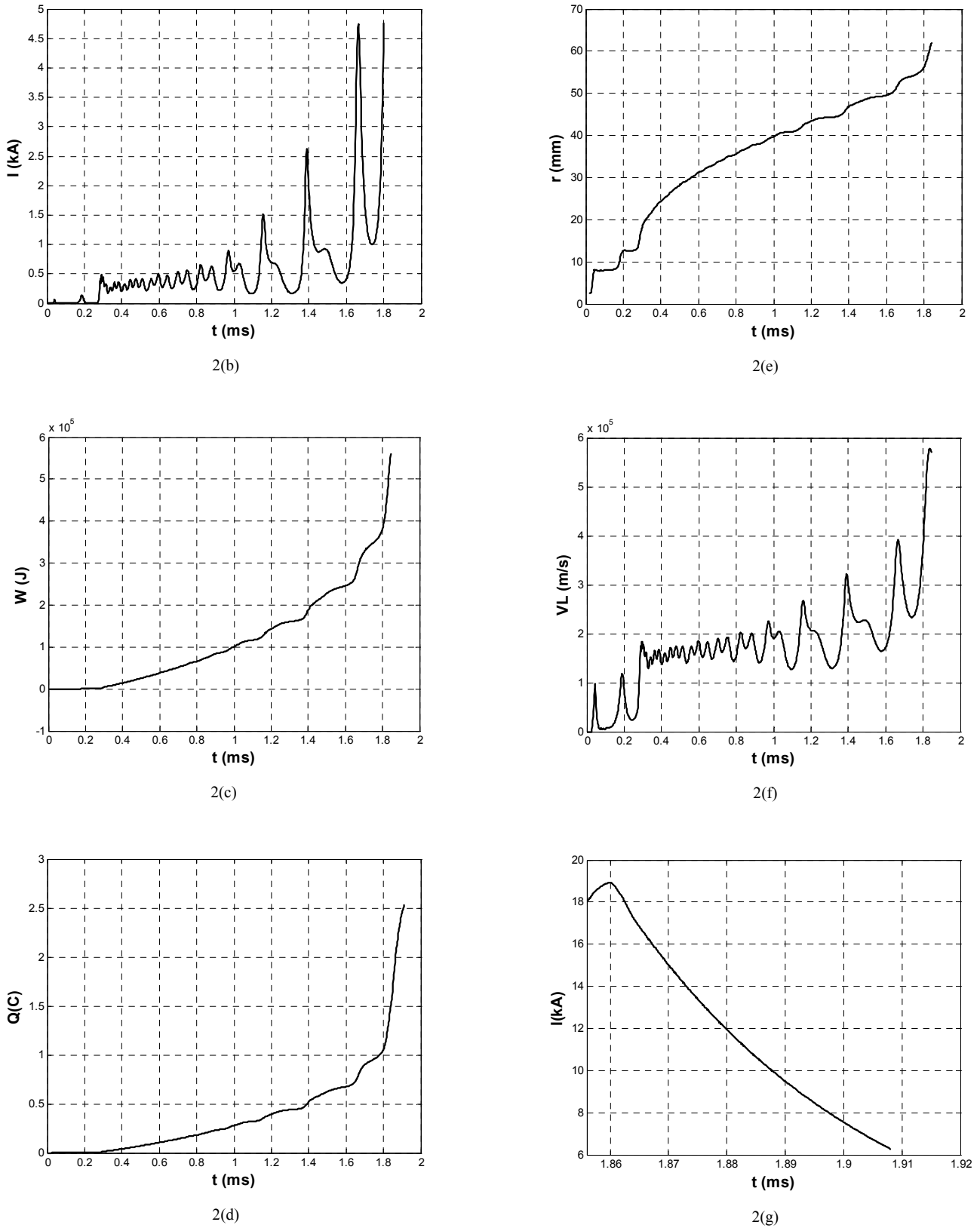
The proposed model may be considered as a good tool in predicting the characteristics of the negative lightning discharge. The simulated temporal evolution of the negative lightning discharge depicts the step-like propagation as well as the different sequences of the propagation as reported in literature. Moreover, the simulated values of the characteristic parameters are generally in the same range as the experimental ones estimated during natural lightning and reported in literature. The model emphasizes also the randomness aspect of the negative leader trajectory (Figures 2a, 3a and 4a). Indeed, for the same input parameters, one can have different simulated trajectories. Since the results vary randomly from one simulation to the next, one cannot expect agreement in detail between a single run of the simulation and a given experimental discharge.

**Table 1.** Simulated results for the three different cloud – earth distances.

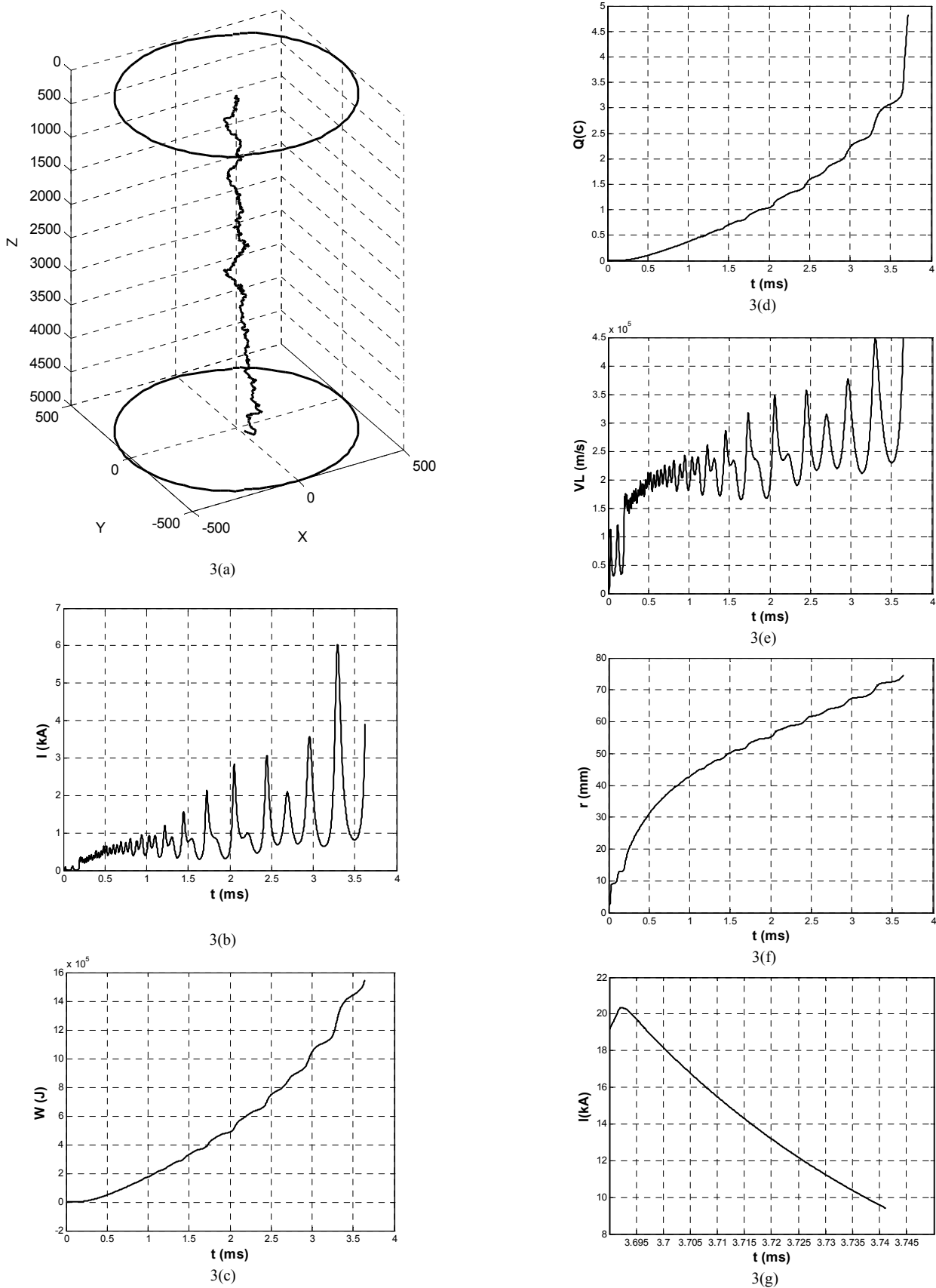
Gap D(m)	Crest voltage $U_{cr}$ (MV)	Maximum velocity $v_{max}$ (m/s)	Leader average current $I_m$ (kA)	Maximum current of return stroke $I_{arc}$ (kA)
2000	40	$4.0 \cdot 10^5$	1	18.5
3500	45	$4.5 \cdot 10^5$	1.5	20.5
5000	50	$5.2 \cdot 10^5$	2	30.5



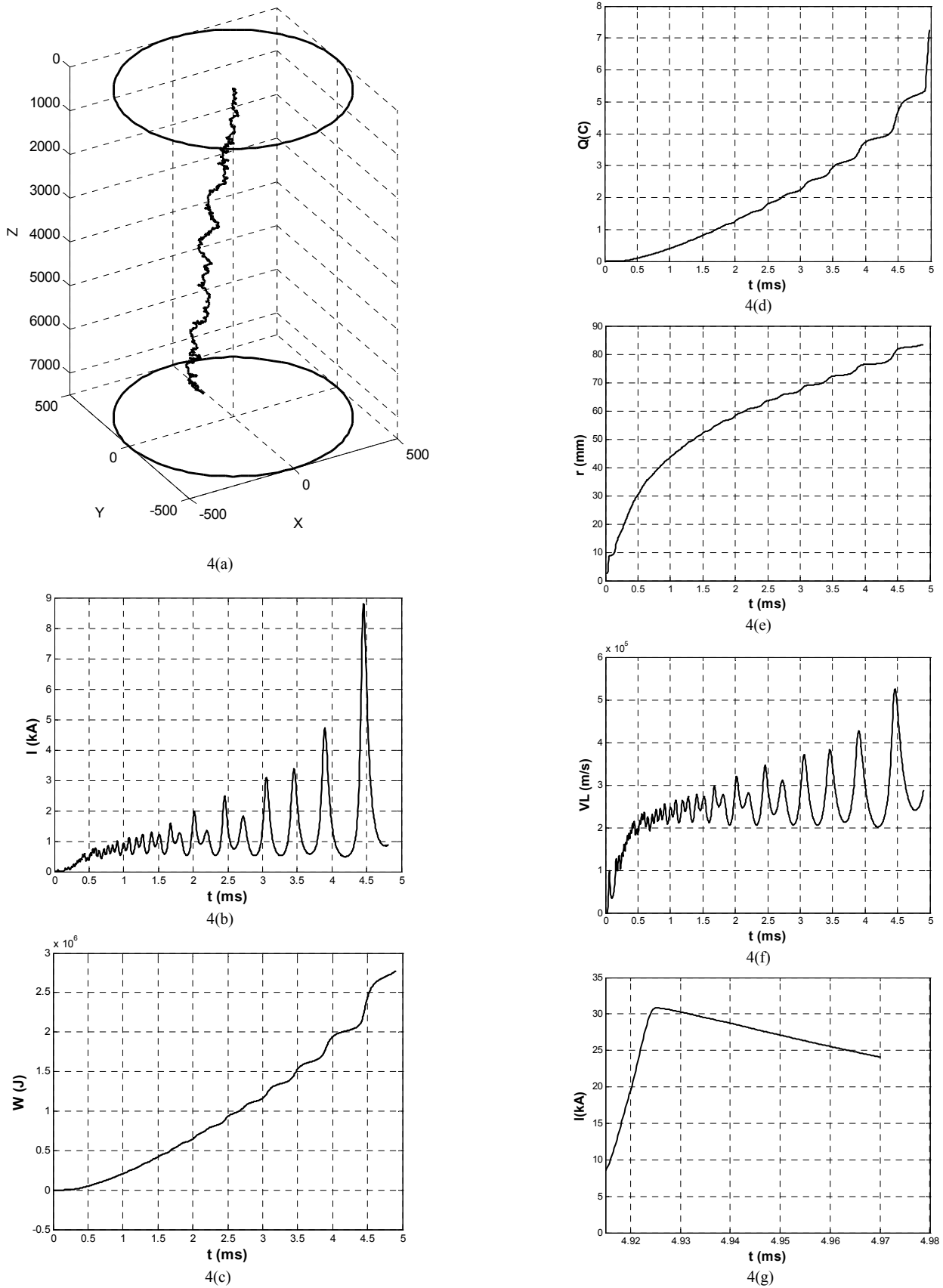
2(a)



**Figure 2.** Simulation of cloud – earth distance  $D=2000$  m under a constant voltage  $U_c=30$  MV, and atmospheric conditions of  $P=100$  kPa and  $T=20^\circ\text{C}$ . Initial radius of equivalent electrode  $r_i = 6$  m [21]: (a) Simulated main leader’s trajectory in space; (b) Simulated main leader’s current; (c) Simulated energy injected into the gap; (d) Applied voltage between cloud – ground; (e) Simulated charge injected into air gap; (f) Main leader thermal radius evolution; (g) Main leader instantaneous velocities; (h) The gradient in the main leader; (i) Simulated discharge’s return strike current.



**Figure 3.** Simulation of cloud – earth distance  $D=3500$  m under a constant voltage  $U_c=45$  MV, and atmospheric conditions of  $P=100$  kPa and  $T=20^\circ\text{C}$ . Initial radius of equivalent electrode  $r_i = 6$  m [21]: (a) Simulated main leader’s trajectory in space; (b) Simulated main leader’s current; (c) Simulated energy injected into the gap; (d) Applied voltage between cloud – ground; (e) Simulated charge injected into air gap; (f) Main leader thermal radius evolution; (g) Main leader instantaneous velocities; (h) The gradient in the main leader; (i) Simulated discharge’s return strike current.



**Figure 4.** Simulation of cloud – earth distance  $D=5000$  m under a constant voltage  $U_c=50$  MV, and atmospheric conditions of  $P=100$  kPa and  $T=20^\circ\text{C}$ . Initial radius of equivalent electrode  $r_i = 6$  m [21]: (a) Simulated main leader’s trajectory in space; (b) Simulated main leader’s current; (c) Simulated energy injected into the gap; (d) Applied voltage between cloud – ground; (e) Simulated charge injected into air gap; (f) Main leader thermal radius evolution; (g) Main leader instantaneous velocities; (h) The gradient in the main leader; (i) Simulated discharge’s return strike current.

The results obtained are found to be in a good agreement with trends of results recorded during natural lightning. They display prominently the scale effects between the simulated results obtained for negative lightning discharges and long negative discharges in laboratory. The proposed simulator may therefore constitute a good tool in determining the characteristics of negative lightning discharge. This work emphasises once more the utility of equivalent electrical circuit model in modelling physical phenomena.

### 3 CONCLUSIONS

The model proposed in this contribution reproduces the negative lightning discharge propagation through a series of successive equivalent electrical circuit. The overall computed space-time characteristics of the negative lightning discharge show satisfactory agreement with experimental measurements/observations. The presented results have shown that the actual understanding of the physical mechanism of electrical discharge is good enough for the development of self consistent detailed models. Work is still in progress to improve the values of the physical parameters and to check the limits of accuracy over a wide range of experimental results. The authors are actually engaged in additional works to study the influence of some assumptions made on the lightning discharge parameters.

### 4 REFERENCES

- [1] M. A. Uman, *The Lightning Discharge*, International Geophysics Series, Edited by William L. Donn, Vol. 39, Academic Press, San Diego, California, USA, 1987.
- [2] E. M. Bazelyan and Y. P. Raizer, "Lightning Physics and Lightning Protection", Institute of Physics Publishing (IOP), Bristol, UK, and Philadelphia, USA, 2000.
- [3] P. Johannet, "Modélisation opérationnelle du canal de foudre", bulletin de la Direction des Études et Recherches d'Électricité De France, serie B, No. 2, pp. 59-72, 1987.
- [4] P. Lalande A. Bondiou-Clergerie, P. Laroche, G. L. Bacchiega, A. Bonamy, I. Gallimberti, A. Heybert-Berard, J. P. Berlandis and B. Bador, "Modeling of the lightning connection process to a ground structure", 23<sup>rd</sup> Intern. Conf. Lightning Protection, Firenze, Italy, pp. 429-33, 1996.
- [5] I. Fofana and A. Beroual, "Modeling of the leader and the return stroke currents with an equivalent electrical network", 9<sup>th</sup> Int. Symp on High Voltage Engineering, Graz, Austria, paper 2141, 1995.
- [6] I. Fofana and A. Beroual, "A positive Lightning stepped leader model based on the similarity with long laboratory spark", 23<sup>rd</sup> Intern. Conf. Lightning Protection, Firenze, Italy, pp. 393-398, 1996.
- [7] A. Béroual, J. H. Rakotonandrasana and I. Fofana, "Predictive dynamic model of the negative lightning discharge based on the similarity with long laboratory sparks – Part 1: Physical process and modelling", IEEE Trans. Dielectr. Electr. Insul., Vol.17, No. 4, pp., 2010 (this issue).
- [8] C. Gary, A. Cimador, R. Fieux, "La foudre: étude du phénomène – application à la protection des lignes de transport", Revue Générale d'Électricité (RGE), Vol. 84, No.1, pp. 24-35, 1975.
- [9] C. N. Richards and G. A. Dawson, "The hydrodynamic instability of water drops falling at terminal velocity in vertical electric fields", J. Geophys. Res., Vol. 76, pp. 3445-3455, 1971.
- [10] P. Ortéga, "Comportement diélectrique des grands intervalles d'air soumis à des ondes de tension de polarité positive ou négative", Thèse de doctorat, Université de Pau, 1992.
- [11] J. Papet-Lépine, *La modélisation de la foudre*, Ed. Lavoisier, 2005.
- [12] J-H. Rakotonandrasana, A. Beroual and I. Fofana, "Modelling of the negative discharge in long air gaps under impulse voltage", J. Phys. D: Appl. Phys., Vol. 41, 105210 (15pp), 2008.
- [13] C. Gary, G. Le Roy, B. Hutzler, J. Lalot and C. Dubanton, "Les propriétés diélectriques de l'air et les très hautes tensions", Collection de la Direction des Études et Recherches d'Électricité De France, No. 51, Eyrolles, 1984.

- [14] M. Rubinstein, F. Rachidi, M. A. Uman, R. Thottapillil, V. A. Rakov and A. Nucci, "Characterization of vertical electric fields 500 m and 30 m from triggered lightning", J. Geophys. Res., 100, No. D5, pp. 8863-72, 1995.
- [15] E. M. Thomson, M. A. Uman and W. H. Beasley, "Speed and current for lightning stepped leader near ground as determined from electric field records", J. Geophys. Res., Vol. 90, pp. 8136-8142, 1985.
- [16] B. F. J. Schonland, "The lightning discharge", Handbook Phys., Vol. 22, pp. 576-628, 1956.
- [17] R. E. Orville and V. P. Idone, "Lightning Leader Characteristics in the Thunderstorm Research International Program (TRIP)", J. Geophys. Res., Vol. 87, No. C13, 177-11, 192, 1982.
- [18] K. Berger, "Novel observations of lightning discharges: Results of research on Mount San Salvatore", J. Franklin Inst., 283, 478-525, 1967.
- [19] R. E. Lopez, M. W. Maier and R. L. Holle, "Comparison of the signal strength of positive and negative cloud-to-ground lightning flashes in Northeast Colorado", J. Geophysical Research, Vol. 96, No. D12, pp. 22.308 – 22.318, 1991.
- [20] E. M. Bazelyan, Y. P. Raizer and N. L. Aleksandrov, "The effect of reduced air density on streamer-to-leader transition and on properties of long positive leader", J. Phys. D: Appl. Phys., Vol. 40, 4133-4144, 2007.
- [21] P. Lalande, "Etude des conditions de foudroiement d'une structure au sol", Ph.D. Thesis, Université Paris XI, Orsay, Paris, France, 1996.



**Abderrahmane Beroual** (M'92, SM'09) is currently Professor at the Ecole Centrale de Lyon, France. Presently, he is the head of the Dielectric Materials and High Voltage Group at AMPERE Lab - CNRS as well as Responsible of the Master Research Program in electrical engineering. From 1994 to 1998, he chaired the International Study Group on Streamer Propagation in Liquids of the IEEE – DEIS. He is member of many Advisory Committees of International Conferences (ICDL, ISH, APTADM, Gas Discharge, ICHVE, CMD, INSUCON, NIWE, iREED, Technical Committee of the IEEE CEIDP, UF10 Technical Commission – MT30 of IEC) and responsible of various research projects. His main research interests include high voltage insulation, dielectric materials, long air gaps discharge and lightning, modeling of discharges and composite materials. He supervised more than 40 Ph.D. Students. He is author/co-author of more than 300 technical papers including more than 110 refereed journal papers, 4 patents and 5 book chapters.



**Jean Hubert Rakotonandrasana** received the Dipl. Ing. and Ph.D. degrees in electrical engineering, respectively in 2000 from the Ecole Polytechnique Fédérale de Lausanne, Switzerland and in 2008 from the Ecole Centrale de Lyon (ECL), France. He is presently an assistant professor at the EIA at Lausanne and associate researcher at AMPERE lab. - ECL where he is a member of the Dielectric Materials and High Voltage Research Group. His main research interest is the modeling of long discharge. He authored/co-authored 10 technical papers.



**Issouf Fofana** (M'05-SM'09) is currently Professor at the Université du Québec à Chicoutimi (UQAC), Quebec, Canada. Since September 2005, Dr Fofana is Chair holder of the Canada Research Chair, tier 2, on Insulating Liquids and mixed dielectrics for Electrotechnology (ISOLIME). He is registered as a professional engineer in the province of Quebec, and is currently appointed to the Technical Committee of the IEEE CEIDP and the International Advisory Committee of the IEEE ICDL. He is a member of the IEEE Task Force on Atmospheric Icing performance of line insulators and member of the ASTM D27 Task Group to develop a test method for Partial Discharge Inception Voltage. He has authored/co-authored over 140 scientific publications including 3 patents and 2 book chapters.