



**HAL**  
open science

## Conformation and recognition of DNA modified by a new antitumor dinuclear Pt complex resistant to decomposition by sulfur nucleophiles

Lenka Zerzankova, Tereza Suchankova, Oldrich Vrana, Nicholas P. Farrell, Viktor Brabec, Jana Kasparkova

### ► To cite this version:

Lenka Zerzankova, Tereza Suchankova, Oldrich Vrana, Nicholas P. Farrell, Viktor Brabec, et al.. Conformation and recognition of DNA modified by a new antitumor dinuclear Pt complex resistant to decomposition by sulfur nucleophiles. *Biochemical Pharmacology*, 2009, 79 (2), pp.112. 10.1016/j.bcp.2009.08.009 . hal-00535824

**HAL Id: hal-00535824**

**<https://hal.science/hal-00535824>**

Submitted on 13 Nov 2010

**HAL** is a multi-disciplinary open access archive for the deposit and dissemination of scientific research documents, whether they are published or not. The documents may come from teaching and research institutions in France or abroad, or from public or private research centers.

L'archive ouverte pluridisciplinaire **HAL**, est destinée au dépôt et à la diffusion de documents scientifiques de niveau recherche, publiés ou non, émanant des établissements d'enseignement et de recherche français ou étrangers, des laboratoires publics ou privés.

## Accepted Manuscript

Title: Conformation and recognition of DNA modified by a new antitumor dinuclear Pt<sup>II</sup> complex resistant to decomposition by sulfur nucleophiles

Authors: Lenka Zerzankova, Tereza Suchankova, Oldrich Vrana, Nicholas P. Farrell, Viktor Brabec, Jana Kasparkova



PII: S0006-2952(09)00689-3  
DOI: doi:10.1016/j.bcp.2009.08.009  
Reference: BCP 10293

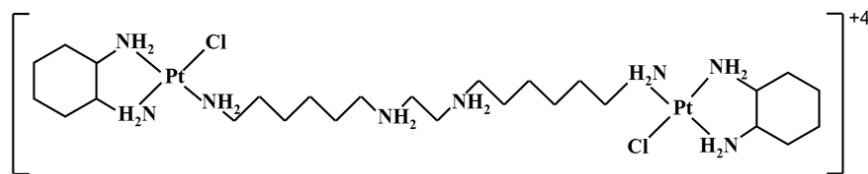
To appear in: *BCP*

Received date: 21-6-2009  
Revised date: 2-8-2009  
Accepted date: 5-8-2009

Please cite this article as: Zerzankova L, Suchankova T, Vrana O, Farrell NP, Brabec V, Kasparkova J, Conformation and recognition of DNA modified by a new antitumor dinuclear Pt<sup>II</sup> complex resistant to decomposition by sulfur nucleophiles, *Biochemical Pharmacology* (2008), doi:10.1016/j.bcp.2009.08.009

This is a PDF file of an unedited manuscript that has been accepted for publication. As a service to our customers we are providing this early version of the manuscript. The manuscript will undergo copyediting, typesetting, and review of the resulting proof before it is published in its final form. Please note that during the production process errors may be discovered which could affect the content, and all legal disclaimers that apply to the journal pertain.

A detailed study of the molecular mechanism of action of a new complex **1** is reported. DNA adducts of **1** can largely escape repair and yet inhibit very effectively transcription.



Accepted Manuscript

1  
2  
3 **Conformation and recognition of DNA modified by a new**  
4 **antitumor dinuclear Pt<sup>II</sup> complex resistant to decomposition by**  
5 **sulfur nucleophiles**  
6  
7  
8  
9  
10  
11  
12  
13  
14  
15

16 Lenka Zerzankova<sup>a</sup>, Tereza Suchankova<sup>b</sup>, Oldrich Vrana<sup>a</sup>, Nicholas P. Farrell<sup>c</sup>,  
17  
18 Viktor Brabec<sup>a</sup>, Jana Kasparikova<sup>a,\*</sup>  
19  
20

21 *<sup>a</sup>Institute of Biophysics, Academy of Sciences of the Czech Republic, v.v.i., CZ-61265 Brno,*  
22  
23 *Czech Republic*  
24

25  
26 *<sup>b</sup>Department of Experimental Physics, Faculty of Sciences, Palacky University, tr. Svobody*  
27  
28 *26, 77146 Olomouc, Czech Republic*  
29

30  
31 *<sup>c</sup>Department of Chemistry, Virginia Commonwealth University, Richmond, Virginia 23284-*  
32  
33 *2006, USA*  
34  
35  
36  
37  
38  
39  
40  
41  
42

43 Classification: (1) Antibiotics and Chemotherapeutics  
44  
45  
46  
47  
48  
49

---

50 \* Corresponding author at: Institute of Biophysics, Academy of Sciences of the Czech  
51 Republic, v.v.i., Kralovopolska 135, CZ-61265 Brno, Czech Republic. Tel.: +420-541517174;  
52  
53 fax: +420-541240499.  
54  
55

56  
57 E-mail address: jana@ibp.cz (J. Kasparikova).  
58  
59  
60  
61  
62  
63  
64  
65

1  
2  
3  
4  
5  
6  
7  
8  
9  
10  
11  
12  
13  
14  
15  
16  
17  
18  
19  
20  
21  
22  
23  
24  
25  
26  
27  
28  
29  
30  
31  
32  
33  
34  
35  
36  
37  
38  
39  
40  
41  
42  
43  
44  
45  
46  
47  
48  
49  
50  
51  
52  
53  
54  
55  
56  
57  
58  
59  
60  
61  
62  
63  
64  
65

*Abbreviations:* BBR3610, [ $\{\text{trans-PtCl}(\text{NH}_3)_2\}_2\text{-}\mu\text{-}\{\text{trans-}(\text{H}_2\text{N}(\text{CH}_2)_6\text{NH}_2(\text{CH}_2)_2\text{NH}_2(\text{CH}_2)_6\text{NH}_2)\}(\text{NO}_3)_4$ ]; bp, base pair; CFE, cell-free extract; cisplatin, *cis*-diamminedichloridoplatinum(II); complex **1**, [ $\{\text{PtCl}(\text{DACH})\}_2\text{-}\mu\text{-H}_2\text{N}(\text{CH}_2)_6\text{NH}_2(\text{CH}_2)_2\text{NH}_2(\text{CH}_2)_6\text{NH}_2\}^{4+}$ ]; CT, calf thymus; DACH, 1,2-diaminocyclohexane; dien, diethylenetriamine; DPP, differential pulse polarography; EtBr, ethidium bromide; FAAS, flameless atomic absorption spectrometry; GSH, glutathione; PAA, polyacrylamide;  $r_b$ , the number of molecules of the platinum complex bound per nucleotide residue;  $r_i$ , the molar ratio of free platinum complex to nucleotides at the onset of incubation with DNA; RNA pol II, RNA polymerase II.

## ABSTRACT

1  
2 Reported herein is a detailed biochemical and molecular biophysics study of the molecular  
3  
4 mechanism of action of antitumor dinuclear Pt<sup>II</sup> complex  $[\{PtCl(DACH)\}_2-\mu-Y]^{4+}$   
5  
6 [DACH=1,2-diaminocyclohexane, Y= H<sub>2</sub>N(CH<sub>2</sub>)<sub>6</sub>NH<sub>2</sub>(CH<sub>2</sub>)<sub>2</sub>NH<sub>2</sub>(CH<sub>2</sub>)<sub>6</sub>NH<sub>2</sub>] (complex **1**).  
7  
8 This new, long-chain bifunctional dinuclear Pt<sup>II</sup> complex is resistant to metabolic  
9  
10 decomposition by sulfur-containing nucleophiles. The results show that DNA adducts of **1** can  
11  
12 largely escape repair and yet inhibit very effectively transcription so that they should persist  
13  
14 longer than those of conventional cisplatin. Hence, they could trigger a number of  
15  
16 downstream cellular effects different from those triggered in cancer cells by DNA adducts of  
17  
18 cisplatin. This might lead to the therapeutic effects that could radically improve chemotherapy  
19  
20 by platinum complexes. In addition, the findings of the present work make new insights into  
21  
22 mechanisms associated with antitumor effects of dinuclear/trinuclear Pt<sup>II</sup> complexes possible.  
23  
24  
25  
26  
27  
28

29  
30 Key words: antitumor; dinuclear platinum complex; DNA damage; DNA repair; RNA  
31  
32 polymerase II; glutathione  
33  
34  
35  
36  
37  
38  
39  
40  
41  
42  
43  
44  
45  
46  
47  
48  
49  
50  
51  
52  
53  
54  
55  
56  
57  
58  
59  
60  
61  
62  
63  
64  
65

## 1. Introduction

The development of new platinum-centered complexes as antitumor DNA-interactive agents has traditionally been focused on mononuclear bidentate platinum complexes. In order to contribute to the design of new antitumor platinum drugs we and others have been systematically testing the hypothesis that there is a correlation between clinical efficacy of platinum compounds and their ability to induce a certain sort of damage or conformational change in target DNA or, in other words, that platinum drugs that bind to DNA in a manner fundamentally different from that of conventional *cis*-diamminedichloridoplatinum(II) (cisplatin) and its analogues can exhibit altered biological properties including the spectrum and intensity of antitumor activity [1, 2]. Recent work based on testing this working hypothesis has focused on polynuclear platinum agents, the trinuclear [*trans*-PtCl(NH<sub>3</sub>)<sub>2</sub>]<sub>2</sub>( $\mu$ -*trans*-Pt(NH<sub>3</sub>)<sub>2</sub>{NH<sub>2</sub>(CH<sub>2</sub>)<sub>6</sub>NH<sub>2</sub>})<sub>2</sub>]<sup>4+</sup> (1,0,1/t,t,t, BBR3464), which has undergone phase II clinical trials, being the prototype of this class [3-5]. DNA adducts of polynuclear platinum complexes differ significantly in structure and type from those of mononuclear platinum complexes. Especially, long-range intra- and interstrand crosslinks are formed in DNA which affect DNA conformation, are recognized by specific proteins and repaired differently in comparison with the crosslinks of cisplatin and its mononuclear analogues [6-10].

The biological activity of polynuclear platinum complexes may be modulated by the geometry and number of leaving groups in the coordination sphere of platinum atoms as well as the nature of the linking the platinum centers. Interestingly, the antitumor activity of the polyamine-linked dinuclear complexes is in many respects comparable to that of BBR3464 [11]. In contrast with the mononuclear complexes, such as antitumor cisplatin and clinically ineffective transplatin, in the dinuclear case both geometries are antitumor active [11],

1 although DNA adducts (crosslinks) as well as local conformational distortions on DNA and  
 2 their recognition by cellular components are affected by geometry [6, 9, 12]. The dinuclear *cis*  
 3 isomer  $[\{cis\text{-PtCl}(\text{NH}_3)_2\}_2(\text{H}_2\text{N}-(\text{CH}_2)_6\text{-NH}_2)]^{2+}$  (1,1/*c,c*) is kinetically more inert in its  
 4 reactions with DNA and in double-stranded DNA produces more interstrand crosslinks than  
 5 its *trans* counterpart [9].  
 6  
 7  
 8  
 9  
 10

11 Differences between the two geometric dinuclear isomers are also manifested in their  
 12 reactions with sulfur nucleophiles. The polynuclear motif of BBR3464, and the general  
 13 structure, such as  $[\{trans\text{-PtCl}(\text{NH}_3)_2\}_2\text{-}\mu\text{-Y}]^{n+}$  (Y =  $\text{NH}_2(\text{CH}_2)_6\text{NH}_2$ , spermidine, spermine,  
 14 etc.), is susceptible to decomposition since substitution of the Pt-Cl bond by a trans-  
 15 influencing S donor results in bridge cleavage [13]. Similarly, a newer member of the  
 16 polynuclear antitumor  $\text{Pt}^{\text{II}}$  family, the dinuclear BBR3610  $[\{trans\text{-PtCl}(\text{NH}_3)_2\}_2\text{-}\mu\text{-}\{trans\text{-}$   
 17  $(\text{H}_2\text{N}(\text{CH}_2)_6\text{NH}_2(\text{CH}_2)_2\text{NH}_2(\text{CH}_2)_6\text{NH}_2)\}(\text{NO}_3)_4$  (Fig. 1), which was designed to mimic the  
 18 same distance between the two Pt-Cl units in trinuclear BBR3464 [14, 15], is decomposed by  
 19 the sulfur nucleophiles [16]. Hence, this metabolic effect is likely to be highly deactivating  
 20 because the capacity to form long-range crosslinks is lost. In contrast, the *cis* geometry as in  
 21  $[\{cis\text{-PtCl}(\text{NH}_3)_2\}_2\text{-}\mu\text{-Y}]^{n+}$  does not undergo decomposition of the dinuclear structure upon  
 22 reaction with sulfur nucleophiles. In the case of thiols, novel thiolate-bridged macrocycles are  
 23 formed, and with the thioether such as methionine, slow loss of  $\text{NH}_3$  is eventually observed  
 24 [17].  
 25  
 26  
 27  
 28  
 29  
 30  
 31  
 32  
 33  
 34  
 35  
 36  
 37  
 38  
 39  
 40  
 41  
 42  
 43  
 44

45 In an effort to design a polynuclear platinum compound that maintains the target (DNA)  
 46 binding profile of the “parent” compound and is less susceptible to metabolic decomposition,  
 47 the new, long-chain bifunctional dinuclear platinum complex structurally cognate with  
 48 BBR3610 -  $[\{\text{PtCl}(\text{DACH})\}_2\text{-}\mu\text{-Y}]^{4+}$  [DACH = 1,2-diaminocyclohexane, Y =  
 49  $\text{H}_2\text{N}(\text{CH}_2)_6\text{NH}_2(\text{CH}_2)_2\text{NH}_2(\text{CH}_2)_6\text{NH}_2$  (spermine-like chain)] (complex **1**, Figure 1) - was  
 50 synthesized [18]. Importantly, preliminary results showed that there was no labilization of the  
 51  
 52  
 53  
 54  
 55  
 56  
 57  
 58  
 59  
 60  
 61  
 62  
 63  
 64  
 65



1 polyamine spermine-like linker groups of **1** in the presence of sulfur-containing species at  
2 physiological pH, which was attributed to the chelate effect of the DACH ring [18]. Complex  
3  
4 **1** should, besides enhanced stability to metabolic deactivation, also exhibit other main  
5  
6 features of potent di- or trinuclear platinum compounds. Besides reactions with sulfur-  
7  
8 containing compounds, other important pharmacological features dictating a drug's efficacy  
9  
10 include cell accumulation, platinum–DNA binding and processing of platinated DNA by  
11  
12 proteins (enzymes) and DNA repair. Thus, the primary objective in the present study was to  
13  
14 understand more deeply the molecular mechanism of action of **1**. Here, we describe  
15  
16 experiments revealing (i) the DNA binding mode of **1** in cell-free media; (ii) the effects of  
17  
18 DNA adducts of **1** on processivity of RNA polymerase II (the enzyme RNA pol II has been a  
19  
20 major focus of the experiments designed to investigate cellular responses to DNA damage by  
21  
22 platinum drugs); (iii) repair of DNA adducts of **1** (since the integrity of this process in human  
23  
24 cells is a key indicator of the sensitivity of a tumor to platinum-based therapy); (iv) reactivity  
25  
26 of **1** with glutathione (GSH), which has been chosen for investigation in this study because of  
27  
28 its role as a determinant of cellular sensitivity to a wide variety of drugs and cytotoxic agents;  
29  
30 and (v) cellular accumulation of **1**. For comparative purposes most of the experiments  
31  
32 performed with **1** were also performed with BBR3610, to further study its mechanism of  
33  
34 action as the complex exhibits a remarkable efficacy against glioma and colon cancer cells in  
35  
36 culture and animal models [14, 15].  
37  
38  
39  
40  
41  
42  
43  
44  
45  
46  
47  
48  
49  
50

## 51 **2. Materials and methods**

### 52 53 54 55 **2.1. Chemicals**

1 Cisplatin and transplatin were obtained from Sigma (Prague, Czech Republic) (purity was  
2  $\geq 99.9\%$  based on elemental and ICP trace analysis). Complex **1** and BBR3610 were prepared  
3  
4 as described previously [18, 19]. [PtCl(dien)]Cl (dien = diethylenetriamine) was a kind gift of  
5  
6 prof. Giovanni Natile (University of Bari). Purity of **1**, BBR3610 and [PtCl(dien)]Cl was  
7  
8 higher than 95% as established by combustion analysis carried out with a Hewlett Packard  
9  
10 185 C, H, and N analyzer. The stock solutions of platinum compounds were prepared at the  
11  
12 concentration of  $5 \times 10^{-4}$  M in 10 mM NaClO<sub>4</sub> and stored at 4 °C in the dark. Calf thymus  
13  
14 (CT) DNA (42% G + C, mean molecular mass ca. 20 000 kDa) was prepared and  
15  
16 characterized as described previously [20, 21]. Plasmids pSP73 [2464 base pairs (bp)], pUC19  
17  
18 (2 686 bp), and pBR322 (4361 bp) were isolated according to standard procedures. The  
19  
20 Klenow fragment from DNA polymerase I (exonuclease minus, mutated to remove the 3 → 5  
21  
22 proofreading domain), restriction endonucleases *EcoRI*, *SspI*, and *XbaI*, Circum Vent™  
23  
24 Thermal Cycle Sequencing Kit with Vent(exo<sup>-</sup>) DNA polymerase, and plasmid DNA pCMV-  
25  
26 GLuc (5764 bp) were purchased from New England Biolabs (Beverly, MA).  
27  
28 HeLaScribe® Nuclear Extract *in vitro* Transcription system kit was from Promega  
29  
30 (Mannheim, Germany). GSH was from Sigma (Prague, Czech Republic).  
31  
32 Deoxyribonucleotide triphosphates were from Roche Diagnostics, GmbH (Mannheim,  
33  
34 Germany). Agarose was from FMC BioProducts (Rockland, ME). Acrylamide,  
35  
36 bis(acrylamide), ethidium bromide (EtBr), and urea were from Merck KgaA (Darmstadt,  
37  
38 Germany). Proteinase K and ATP were from Boehringer (Mannheim, Germany). Radioactive  
39  
40 products were from Amersham (Arlington Heights, IL, USA). A cell-free extract (CFE) was  
41  
42 prepared from the repair proficient HeLa S3 cell line as described [22].  
43  
44  
45  
46  
47  
48  
49  
50  
51  
52  
53  
54  
55

## 56 **2.2. Platination reactions in cell-free media**

57  
58  
59  
60  
61  
62  
63  
64  
65

1  
2  
3  
4  
5  
6  
7  
8  
9  
10  
11  
12  
13  
14  
15  
16  
17  
18  
19  
20  
21  
22  
23  
24  
25  
26  
27  
28  
29  
30  
31  
32  
33  
34  
35  
36  
37  
38  
39  
40  
41  
42  
43  
44  
45  
46  
47  
48  
49  
50  
51  
52  
53  
54  
55  
56  
57  
58  
59  
60  
61  
62  
63  
64  
65

If not stated otherwise, CT or plasmid DNAs were incubated with the platinum complex in 10 mM NaClO<sub>4</sub> at 37 °C in the dark. After 24 h, the samples were exhaustively dialyzed against the medium required for subsequent biochemical or biophysical analysis. An aliquot of these samples was used to determine the value of  $r_b$  (the number of molecules of the platinum complex bound per nucleotide residue) by flameless atomic absorption spectrometry (FAAS), or by differential pulse polarography (DPP) [23].

### 2.3. Sequence preference of DNA adducts

The primer extension footprinting assay was used to evaluate the sequence selectivity of DNA modification by **1** or BBR3610 in comparison to cisplatin and transplatin. The fragment of pSP73 DNA linearized by *HpaI* (2464 bp) was incubated with platinum complexes in 10 mM NaClO<sub>4</sub> for 24 h at 37 °C to obtain  $r_b = 0.005$  or 0.01. The excess of drug was removed by ethanol precipitation. Circum Vent™ Thermal Cycle Sequencing Kit with Vent(exo<sup>-</sup>) DNA polymerase was used along with the protocol for thermal cycle DNA sequencing with 5′ end-labeled 20-mer SP6 primer recommended by the manufacturer with small modifications [24]. The synthesis products were separated by electrophoresis on a denaturing PAA gel [6% polyacrylamide (PAA)/8 M urea]; sequence ladders were obtained in parallel using untreated control DNA fragment.

### 2.4. DNA repair synthesis by human cell extract

Repair DNA synthesis of CFEs was assayed using pUC19 plasmid. Each reaction of 50 μL contained 600 ng of nonmodified pBR322 and 600 ng of nonmodified or platinated pUC19, 2 mM ATP, 30 mM KCl, 0.05 mg/mL creatine phosphokinase (rabbit muscle), 20 mM each dGMP, dCTP, and TTP, 8 mM dATP, 74 kBq of [ $\alpha$ -<sup>32</sup>P]dCMP in the buffer composed of 40 mM HEPES-KOH, pH 7.5, 5 mM MgCl<sub>2</sub>, 0.5 mM dithiothreitol, 22 mM creatine phosphate,

1.4 mg of bovine serum albumin/mL, and 20  $\mu$ g of CFE from the HeLa S3 cells. Reactions were incubated for 3 h at 30 °C and terminated by adding EDTA to a final concentration of 20 mM, SDS to 0.6%, and proteinase K to 250  $\mu$ g/mL and then incubating for 20 min. The products were extracted with one volume of 1:1 phenol/chloroform. The DNA was precipitated from the aqueous layer by the addition of 0.1 volume of 3 M sodium acetate and 2.5 volumes of ethanol. After 30 min of incubation at -20 °C and centrifugation at 12 000 g for 30 min at 4 °C, the pellet was washed with 0.2 mL of 80% ethanol and dried in a vacuum centrifuge. DNA was finally linearized before electrophoresis on a 1% agarose gel. Resulting gel was stained by EtBr. The experiments were made in quadruplicate.

## 2.5. Transcription by RNA polymerase II *in vitro*

*In vitro* transcription reaction was performed using HeLaScribe® Nuclear Extract *in vitro* Transcription system kit. The system contains all necessary components for *in vitro* transcription from a CMV promoter of plasmid DNA pCMV-GLuc. Plasmid pCMV-GLuc linearized by *Xba*I was incubated with platinum complexes in 10 mM NaClO<sub>4</sub> for 24 h at 37 °C to obtain  $r_b = 8 \times 10^{-4} - 6.4 \times 10^{-3}$ . After modification, DNA was precipitated by ethanol to remove incidental free platinum so that the samples contained no free platinum complex. *In vitro* transcription assay was performed using the HeLa nuclear extract supplied with the kit following the manufacturer's protocol with small modifications. Briefly, 100 ng of platinated or nonplatinated linearized pCMV-GLuc DNA was incubated in the 1x Transcription buffer supplemented by 4 mM MgCl<sub>2</sub>, 0.4 mM rATP, 0.4 mM rCTP, 0.4 mM rGTP, 16  $\mu$ M UTP, 10  $\mu$ Ci [ $\alpha$ -<sup>32</sup>P]UTP (3000Ci/mmol), 20 U RNase inhibitor and nuclear extract (8 U) in a final reaction volume of 25  $\mu$ L at 30 °C for 60 min. The reaction was terminated by the addition of 175  $\mu$ l HeLa Extract Stop Solution followed by extraction with phenol and chloroform. The transcripts were precipitated by ethanol and the pellet was washed, dried and resuspended in a

1 loading buffer containing 90% formamide, 10 mM EDTA, 0.1% xylene cyanol and 0.1%  
2 bromphenol blue. The samples were electrophoresed through 6% denaturing PAA gel. The  
3  
4 gels were subsequently visualized and the radioactivities associated with bands corresponding  
5  
6  
7 to full length runoff transcription products were quantitated.  
8  
9

## 10 11 **2.6. Reactions with glutathione**

12 Reactions of GSH with **1**, BBR3610, or cisplatin were investigated by monitoring UV  
13  
14 absorption at 260 nm of solutions containing the platinum complex and GSH exactly as  
15  
16 described in the previous work [25]; the absorbance at 260 nm reflects the presence of  
17  
18 platinum-sulfur and disulfide bonds. The platinum compounds (from aged stock solutions  
19  
20 equilibrated in 10 mM NaClO<sub>4</sub>) were mixed with GSH at 37 °C in the medium of 10 mM  
21  
22 NaClO<sub>4</sub> plus 0.1 mM phosphate buffer, pH 7.0, in the dark and in nitrogen atmosphere.  
23  
24

25 Reactions were initiated by mixing the platinum complex with the buffer followed by  
26  
27 immediate addition of GSH. The kinetic data were fitted by non-linear regression (GraphPad  
28  
29 Prism) to one-phase or two-phase exponential association. The decision as to which fit was  
30  
31 more appropriate for each dependence was made by comparing the fits of two equations by  
32  
33 using an F test (GraphPad Prism).  
34  
35  
36  
37  
38  
39  
40  
41  
42

## 43 **2.7. Cellular platinum accumulation**

44 Cellular uptake of **1**, BBR3610, and cisplatin was measured in A2780 and A2780cisR cells  
45  
46 (sensitive and resistant to cisplatin, respectively). The cells were seeded in 10 cm tissue  
47  
48 culture dishes (30 000 per cm<sup>2</sup>). After overnight incubation, A2780 and A2780cisR cells were  
49  
50 treated for 4, 15 or 24 h with the platinum compound at the equimolar concentrations of 2.8  
51  
52 μM or 18.6 μM, respectively (these concentrations correspond to the IC<sub>50</sub> values obtained for  
53  
54 A2780 and A2780cisR cells treated with cisplatin for 72 h). The attached cells were washed  
55  
56  
57  
58  
59  
60  
61  
62  
63  
64  
65

twice with phosphate buffered saline (4 °C), the pellet stored at -80 °C. Afterward, the pellets were digested with 12 M HCl and platinum content determined by FAAS. All experiments were made in quadruplicate.

## 2.8. Other physical methods

Absorption spectra were measured with a Beckman 7400 DU spectrophotometer and quartz cells with a thermoelectrically controlled cell holder and quartz cells with a path length of 1 cm. Purification of oligonucleotides with the aid of HPLC was carried out on a Waters HPLC system consisting of Waters 262 pump, Waters 2487 UV detector, and Waters 600S controller with MonoQ HR 5/50 GL column. The FAAS measurements were carried out on a Varian AA240Z Zeeman atomic absorption spectrometer equipped with a GTA 120 graphite tube atomizer. For FAAS analyses, DNA was precipitated with ethanol and dissolved in HCl (0.1 M) whereas cells were mineralized using Milestone MLS 1200 Mega high performance microwave digestion unit with MLS Mega 240 terminal and EM 45/A Exhaust module. DPP was performed with an EG&G Princeton Applied Research Corporation Model 384B Polarographic Analyzer. The gels were visualized by using a BAS 2500 FUJIFILM bioimaging analyzer, and the radioactivity associated with bands was quantitated with the AIDA image analyzer software (Raytest, Germany).

## 3. Results

### 3.1. DNA modification in a cell-free medium

#### 3.1.1. DNA binding

Alterations in the target DNA induced by platinum drugs are important factors involved in the mechanisms of antitumor effects of these metallodrugs. In the present study, we first investigated the reaction products of **1** with CT DNA in cell-free media and compared these binding properties with those of its BBR3610 congener and cisplatin. The first experiments were aimed at quantifying the binding of **1** to mammalian DNA. Solutions of double-helical CT DNA at a concentration of 0.032 mg/mL were incubated with **1** at the value of  $r_i$  of 0.05 in 10 mM NaClO<sub>4</sub> at 37 °C ( $r_i$  is defined as the molar ratio of free platinum complex to nucleotide phosphates at the onset of incubation with DNA). At various time intervals, an aliquot of the reaction mixture was withdrawn and assayed by DPP for platinum not bound to DNA. No changes in the pH of the reaction mixture containing DNA and platinum compounds were measured within 48 h after mixing DNA with the platinum complex. The amount of the platinum compound bound to DNA increased with time and the time at which the binding of **1** and BBR3610 reached 50% ( $t_{50\%}$ ) was  $87.4 \pm 0.8$  and  $78.0 \pm 0.8$  min, respectively (Table 1). Thus, complexes **1** and BBR3610 were quantitatively bound after 24 h.

The binding experiments of the present work indicate that the modification reactions resulted in the irreversible coordination of **1** to polymeric double-helical DNA, which also facilitates sample analysis. Hence, it is possible to prepare easily and precisely the samples of DNA modified by the platinum complex at a preselected value of  $r_b$ . The samples of DNA modified by **1** or BBR3610 and cisplatin and analyzed further by biophysical or biochemical methods were prepared in 10 mM NaClO<sub>4</sub> at 37 °C. If not stated otherwise, after 24 h of the reaction of DNA with the complex, the samples were precipitated in ethanol, dissolved in the appropriate medium and the  $r_b$  value in an aliquot of this sample checked by FAAS. In this way, the analyses described in the present paper were performed in the absence of unbound (free) platinum complex.

### 3.1.2. Replication mapping of platinum-DNA adducts

1  
2 This procedure involved the extension by VentR(exo<sup>-</sup>) DNA polymerase at the 3'-end of the  
3  
4 primer up to the metal adduct on the template strand of pSP73 DNA. The products of the  
5  
6 synthesis were then examined on DNA sequencing gels, and the sequence specificity of the  
7  
8 platinum adduct formation was determined to the exact base pair. *In vitro* DNA synthesis on  
9  
10 DNA templates containing the adducts of **1** generated a population of DNA fragments,  
11  
12 indicating that the adducts of this complex effectively terminated DNA synthesis (Fig. 2A,  
13  
14 lanes 1 and 2). Sequence analysis of the termination sites produced by adducts of **1** shows that  
15  
16 the major stop sites were similar to those produced by BBR3610 (Fig. 2A, lanes 3 and 4) and  
17  
18 were mainly at guanine residues. While DNA synthesis on the template containing the  
19  
20 adducts of cisplatin was terminated preferentially at the GG sites (Fig. 2A, lane 5) as  
21  
22 expected, the termination due to the adducts of **1** or BBR3610 was less regular and rather  
23  
24 similar to that due to the adducts of transplatin (Fig. 2A, lane 6), i.e. some stop sites were also  
25  
26 at the C bases.  
27  
28  
29  
30  
31  
32  
33  
34  
35

### 3.1.3. Interstrand cross-linking

36  
37 Bifunctional platinum compounds, which coordinate base residues in DNA, form various  
38  
39 types of interstrand and intrastrand crosslinks. Therefore, we have quantitated the interstrand  
40  
41 cross-linking efficiency of **1** in pSP73 plasmid (2464 bp). This plasmid DNA was linearized  
42  
43 by *EcoRI* (*EcoRI* cuts only once within pSP73 plasmid) and globally modified by **1** or  
44  
45 BBR3610. The samples were analyzed for interstrand crosslinks by agarose gel  
46  
47 electrophoresis under denaturing conditions [26]. Upon electrophoresis, 3'-end labeled strands  
48  
49 of linearized pSP73 plasmid containing no interstrand crosslinks migrate as a 2 464-base  
50  
51 single strand, whereas the interstrand crosslinked strands migrate more slowly as a higher  
52  
53 molecular mass species (Fig. S1A). The experiments were carried out with DNA samples that  
54  
55  
56  
57  
58  
59  
60  
61  
62  
63  
64  
65



1 were modified by the platinum complex at various  $r_b$  values. The intensity of the more slowly  
2 migrating band was almost independent of the growing level of the platination (Fig. S3). The  
3 radioactivity associated with the individual bands in each lane was measured to obtain  
4 estimates of the fraction of noncross-linked or cross-linked DNA under each condition.  
5  
6  
7  
8  
9  
10 Interstrand cross-linking efficiency of **1** ( $23 \pm 4\%$ ) was very similar to that of BBR3610 ( $26 \pm$   
11  
12  $5\%$ ) (Table 1), implying that interstrand crosslinks represent a significant portion of the  
13  
14 adducts formed in DNA by **1**.  
15  
16  
17  
18

### 19 3.1.4. Ethidium bromide fluorescence

21 The fluorescent probe EtBr can be used to distinguish between perturbations induced in DNA  
22 by monofunctional and bifunctional adducts of platinum compounds [8, 27]. Binding of EtBr  
23 to DNA by intercalation is blocked in a stoichiometric manner by formation of the  
24  
25 bifunctional adducts of a series of platinum complexes including cisplatin and transplatin,  
26  
27 which results in a loss of fluorescence intensity.  
28  
29  
30  
31  
32  
33

34 Double helical CT DNA was first modified by platinum complexes (**1**, BBR3610,  
35 cisplatin, or monofunctional [PtCl(dien)]Cl for 24 h. The levels of the modification  
36 corresponded to the values of  $r_b$  in the range between 0 and 0.1. Modification of DNA by all  
37  
38 platinum complexes resulted in a decrease of EtBr fluorescence (Fig. 3). The decrease caused  
39  
40 by the adducts of the dinuclear platinum complexes **1** and BBR3610, was similar and  
41  
42 markedly more pronounced than that induced by the DNA adducts of cisplatin at equivalent  $r_b$   
43  
44 values. Modification of DNA by the monofunctional platinum complex [PtCl(dien)]Cl  
45  
46 resulted in only a slight decrease of EtBr fluorescence intensity as compared with the control  
47  
48 DNA-EtBr complex [8, 27]. The structures of DNA adducts of bifunctional dinuclear  
49  
50 platinum compounds arise from two monofunctional substitutions on the polynucleotide.  
51  
52  
53  
54  
55  
56  
57  
58  
59  
60  
61  
62  
63  
64  
65

1 by these adducts is much more delocalized and extends over considerably more base pairs  
2 around the platination sites than in the case of the adducts of mononuclear complexes such as  
3 cisplatin and its analogues. Thus, these results are consistent with the formation of long-range  
4 crosslinks by dinuclear **1** and BBR3610.  
5  
6  
7  
8  
9

### 10 11 3.1.5. Unwinding of negatively supercoiled DNA

12 Electrophoresis in native agarose gel was used to determine the unwinding induced in  
13 negatively supercoiled pSP73 plasmid by monitoring the degree of supercoiling [28] (Fig.  
14 S2). A compound that unwinds the DNA duplex reduces the number of supercoils in closed  
15 circular DNA so that their number decreases. This decrease upon binding of unwinding agents  
16 causes a decrease in the rate of migration through agarose gel, which makes it possible to  
17 observe and quantify the mean value of unwinding per one adduct. Fig. S4 shows  
18 electrophoresis gels from the experiment in which variable amounts of **1** or BBR3610 have  
19 been bound to a mixture of relaxed and negatively supercoiled pSP73 DNA. The mean  
20 unwinding angle is given by  $\Phi = -18\sigma/r_b(c)$ , where  $\sigma$  is the superhelical density and  $r_b(c)$  is  
21 the value of  $r_b$  at which the supercoiled and nicked forms co-migrate [28]. Under the present  
22 experimental conditions,  $\sigma$  was calculated to be -0.036 on the basis of the data of cisplatin for  
23 which the  $r_b(c)$  was determined in this study and  $\Phi = 13^\circ$  was assumed. Using this approach,  
24 the DNA unwinding angle of  $13 \pm 2^\circ$  or  $14 \pm 2^\circ$  was determined for **1** and BBR3610,  
25 respectively (Table 1).  
26  
27  
28  
29  
30  
31  
32  
33  
34  
35  
36  
37  
38  
39  
40  
41  
42  
43  
44  
45  
46  
47  
48  
49  
50

### 51 3.2. DNA repair synthesis by human cell extract

52 To investigate processing of adducts of complex **1** by DNA damage-recognition proteins, we  
53 used *in vitro* systems to study repair of platinum lesions by CFE and assay to examine  
54  
55  
56  
57  
58  
59  
60  
61  
62  
63  
64  
65

1 catalytic activity of RNA polymerase II (RNA pol II) in human CFE to study the ability of the  
2 adducts of **1** to inhibit transcription by RNA pol II.  
3

4 DNA repair efficiency in pUC19 plasmid (2686 bp) globally modified by **1**, BBR3610 or  
5 cisplatin at  $r_b = 0.03$  was tested using CFE of repair proficient HeLa cells. Repair activity was  
6 monitored by measurement of the amount of incorporated radiolabelled nucleotide. The  
7 incorporation of radioactive material was corrected for the relative DNA content in each band.  
8 As illustrated in Fig. 4, damage-induced DNA repair synthesis detected in the plasmid  
9 modified by **1** or BBR3610 was approximately 60% of that found for the cisplatin at the same  
10 level of modification.  
11  
12  
13  
14  
15  
16  
17  
18  
19  
20  
21  
22  
23

### 24 **3.3. RNA polymerase II transcription in human cell extracts**

25  
26  
27  
28  
29 The effect of **1** on transcription activity of human RNA pol II was tested using the  
30 commercially available HeLaScribe®Nuclear Extract *in vitro* Transcription system kit. Using  
31 an analogous procedure as described earlier [29], the RNA pol II transcription template  
32 pCMV-Gluc either modified by **1** or cisplatin or nonmodified was incubated with HeLa  
33 nuclear extract supplied with this kit. This extract can support accurate transcription initiation  
34 by RNA pol II and exhibits both basal and regulated patterns of RNA transcription [30]. This  
35 nuclear extract also is the source for a variety of transcription factors, DNA binding proteins  
36 and the enzymatic machinery involved in process of RNA synthesis. Specific transcription  
37 from the CMV promoter results in a runoff transcript 688 nucleotides in length. The generated  
38 full length transcripts can be subsequently detected by gel electrophoresis. As seen in Fig. 5A,  
39 in the absence of platination, a high level of full length transcript was observed. In contrast, a  
40 significant decrease in the amount of full length transcript was observed as a result of  
41 increasing template modification by both platinum complexes tested in this experiment. The  
42  
43  
44  
45  
46  
47  
48  
49  
50  
51  
52  
53  
54  
55  
56  
57  
58  
59  
60  
61  
62  
63  
64  
65

1 relative amount of full length transcript generated from each reaction was quantitated and  
2 plotted as a function of the level of the template platination ( $r_b$ ) (Fig. 5B). Under the  
3  
4 conditions employed, RNA pol II transcription was highly sensitive to even very low levels of  
5  
6 platinum damage on the template DNA, the damage by **1** being considerably more effective in  
7  
8 inhibiting RNA pol II transcription than that by cisplatin.  
9  
10

11 To investigate the possibility that RNA pol II catalytic activity was inhibited as a  
12  
13 consequence of hijacking factors essential for RNA pol II initiation by DNA adducts of **1** [29,  
14  
15 31], the following competition experiments were performed. RNA pol II transcription of  
16  
17 undamaged template pCMV-Gluc was examined in the presence of increasing levels of a  
18  
19 second, exogenous pUC19 plasmid containing multiple lesions caused by either **1** or cisplatin.  
20  
21 As shown in Fig. 6, the initial addition of control, undamaged exogenous plasmid resulted in  
22  
23 an overall increase in the amount of transcript generated by pCMV-Gluc which only slightly  
24  
25 increased upon the further addition of unplatinated plasmid. RNA pol II transcription of  
26  
27 pCMV-Gluc template was significantly reduced by the addition of increasing amounts of  
28  
29 cisplatin modified exogenous plasmid. In contrast, pronouncedly lower inhibition effect was  
30  
31 seen if the transcription assay was performed in the presence of exogenous plasmid containing  
32  
33 adducts of **1** (Fig. 6).  
34  
35  
36  
37  
38  
39  
40  
41  
42  
43

#### 44 **3.4. Reactions with reduced glutathione**

45  
46  
47 Pt<sup>II</sup> compounds have a strong thermodynamic preference for binding to sulfur donor ligands.  
48  
49 Hence, before antitumor platinum drugs reach DNA in the nucleus of tumor cells, they may  
50  
51 interact with various compounds, including sulfur-containing molecules. These interactions  
52  
53 are generally thought to play a role in mechanisms underlying tumor resistance to platinum  
54  
55 compounds, their inactivation, and their side effects [32]. Therefore, interest in the  
56  
57  
58  
59  
60  
61  
62  
63  
64  
65

1 interactions of platinum antitumor drugs with sulfur-containing molecules of biological  
2 significance has recently increased markedly. An example of endogenous thiols to which  
3 platinum complexes bind when they are administered intravenously or after they enter the cell  
4 is GSH.  
5  
6  
7

8  
9 In the present work, we investigated reactions of GSH with **1**, BBR3610 and cisplatin  
10 using UV absorption spectrophotometry monitoring absorbance at 260 nm [25] (Fig. S3). The  
11 platinum complexes at a concentration of 33  $\mu$ M were mixed with 15 mM GSH (this  
12 concentration of GSH is physiologically relevant [33]) at 37 °C. The  $t_{1/2}$  (half-times of the  
13 reactions), which mainly result in the formation of platinum-sulfur bonds, were 84, 135, and  
14 109 min for reactions of **1**, BBR3610, and cisplatin with GSH, respectively (one-phase  
15 exponential association). Thus, **1** reacted with GSH markedly faster than BBR3610.  
16  
17  
18  
19  
20  
21  
22  
23  
24  
25

26 The absorbance at 260 nm reflects the presence of platinum-sulfur and disulfide bonds  
27 [25]. Interestingly, the absorbance at 260 nm determined for the reaction of GSH with **1** was  
28 approximately 2-fold and 1.3-fold lower than that determined for the reaction of GSH with  
29 BBR3610 and cisplatin, respectively (Fig. S2, Table 1).  
30  
31  
32  
33  
34  
35  
36  
37  
38

### 39 **3.5. Cellular accumulation**

40  
41  
42  
43 A factor contributing to platinum drug cytotoxicity is cellular accumulation. To examine  
44 accumulation of **1**, the cellular levels of this compound were measured after a 24 h exposure  
45 of the A2780 or A2780cisR cells to the drugs. The uptake of **1** by cisplatin sensitive A2780  
46 cells was lower than that of BBR3610, but markedly greater than that of cisplatin (Fig. S4A  
47 and Table 1). On the other hand, the uptake of **1** by cisplatin resistant A2780cisR cells was  
48 similar to that of BBR3610 and again markedly higher than that of cisplatin (Fig. S4B and  
49 Table 1). These results are consistent with the previous findings demonstrating that dinuclear  
50  
51  
52  
53  
54  
55  
56  
57  
58  
59  
60  
61  
62  
63  
64  
65

1 complexes carrying polyamine linkers are able to enter the cells more easily and faster than  
2 their mononuclear counterparts. Thus, the results show that there is no clear correlation  
3  
4 between uptake and cytotoxicity of **1**, BBR3610 and cisplatin within the tumor cells sensitive  
5  
6 and resistant to cisplatin. Nevertheless, the results do demonstrate the enhanced uptake of **1** so  
7  
8 that at least part of the increased cytotoxicity of **1** and BBR3610 over cisplatin in cisplatin  
9  
10 resistant cells seems to be attributable to an increased intracellular accumulation of **1** or  
11  
12 BBR3610.  
13  
14  
15  
16  
17  
18  
19  
20  
21

#### 22 **4. Discussion**

23  
24  
25  
26 The important target of platinum antitumor drugs leading to cell death is genomic DNA [34],  
27  
28 although targets other than DNA may be also important for these agents [35-37]. Hence, it is  
29  
30 generally accepted that one of important features of mechanism of action of cisplatin and its  
31  
32 analogues is their binding to nuclear DNA and subsequent blockage of transcription while  
33  
34 eluding repair [34, 38]. This fact was impetus for the study described in this article.  
35  
36  
37

38  
39 It has been suggested [13, 16] that metabolic decomposition of antitumor polynuclear  
40  
41 platinum complexes by sulfur nucleophiles resulting in linker cleavage and loss of the  
42  
43 di/trinuclear structure due to displacement of the Pt-Cl bond of di/trinuclear agents may  
44  
45 explain why clinical tests of this class of antitumor metallodrugs, while giving some positive  
46  
47 responses, did not reflect the high antitumor activity in preclinical experiments [5, 11]. The  
48  
49 search for a more suitable polynuclear platinum compound has led to the synthesis of the  
50  
51 dinuclear complex **1** based on 1,2-DACH as carrier ligand and containing a spermine-like  
52  
53 linker [18]. While dinuclear polyamine-linked drugs have been shown to behave toward DNA  
54  
55 in a way generally similar to trinuclear BBR3464 [39] the DNA binding with this specific “6-  
56  
57  
58  
59  
60  
61  
62  
63  
64  
65

1  
2  
3  
4  
5  
6  
7  
8  
9  
10  
11  
12  
13  
14  
15  
16  
17  
18  
19  
20  
21  
22  
23  
24  
25  
26  
27  
28  
29  
30  
31  
32  
33  
34  
35  
36  
37  
38  
39  
40  
41  
42  
43  
44  
45  
46  
47  
48  
49  
50  
51  
52  
53  
54  
55  
56  
57  
58  
59  
60  
61  
62  
63  
64  
65

2-6'' linker has not been studied. Further the use of DACH as carrier group produces enhanced resistance to decomposition by sulfur nucleophiles, reasonably attributed to the chelate effect of the DACH ring. The remarkable biological effects of polynuclear platinum complexes have been attributed to their unique DNA binding mode. Thus, it is of interest to answer the question whether the new complexes **1** and BBR3610 exhibit a DNA binding profile similar to other antitumor di/trinuclear platinum agents, and whether there are significant differences between **1** and BBR3610, based on the former's resistance to metabolic decomposition by sulfur nucleophiles.

The major feature of DNA binding mode of BBR3464 and other antitumor dinuclear platinum compounds is that these compounds form long range intra- and interstrand crosslinks; these crosslinks distort DNA conformation, but are not recognized by DNA binding proteins which readily bind to DNA modified by cisplatin [7]. The results of the present work confirm that also complexes **1** and BBR3610 form on DNA long range crosslinks (Fig. 3). Similarly as other polynuclear Pt<sup>II</sup> complexes, they form relatively high amount of interstrand crosslinks (23% and 26% respectively, Table 1, Fig. S1). Trinuclear BBR3464 forms in DNA approximately 20% interstrand crosslinks which have been shown to be most likely lesions responsible for antitumor effects of this trinuclear agent [7]. Moreover, adducts of **1** and BBR3610 unwind DNA by approx. 13 ° on average (Table 1, Fig. S2), which is again a value very similar to that found for DNA unwinding by adducts of BBR3464 (14 °[8]).

Thus, in broad terms, we have demonstrated that the DNA binding mode of **1** and BBR3610, including sequence preference, type of the major adducts, and resulting conformational alterations, is not very different from that of other antitumor di/trinuclear platinum drugs (Table 1). In addition, we have demonstrated that the major adducts of **1** and BBR3610 are removed from DNA by DNA repair systems present in CFEs with a markedly

1 lower efficiency than the adducts of cisplatin (Fig. 4, Table 1). Hence, this result lends  
2 support to the view that these adducts persist longer on DNA than the adducts of cisplatin,  
3  
4 which may potentiate antitumor effects and contribute to a lower resistance of the tumor cells  
5  
6 to this metallodrug.  
7

8  
9 Studies focused on early phases of molecular mechanisms underlying antitumor effects of  
10 platinum antitumor drugs also involve investigations of cellular responses to DNA damage by  
11 these metallodrugs [40-42]. In the last five years particular attention has been paid to the role  
12 of inhibition of transcription elongation by RNA pol II by cisplatin adducts in mechanisms of  
13 their biological effects [38, 43-46]. This important component of the mechanism underlying  
14 antitumor effects of platinum drugs has not been hitherto investigated in the case of  
15 di/trinuclear platinum compounds. We demonstrate in the present work for the first time  
16 (Figs. 5 and 6) that RNA pol II transcription is highly sensitive to even very low levels of  
17 modification on the template DNA by **1**. Thus, already very low levels of DNA modification  
18 by **1** may initiate transcription-coupled subpathways leading to apoptosis or necrosis [47].  
19  
20  
21  
22  
23  
24  
25  
26  
27  
28  
29  
30  
31  
32

33  
34 Importantly, adducts of the dinuclear complex **1** are markedly more effective in inhibiting  
35 RNA pol II transcription than those of conventional cisplatin (Fig. 5). This different reduction  
36 in transcript production may result from different level of platination and/or conformational  
37 distortions at the promoter, leading to promoter inactivation. The inhibition effects, however,  
38 were observed at the levels of platination well below that expected to induce such damage [ $r_b$   
39 =  $8 \times 10^{-4}$ , i.e. only ~9 adducts per molecule of template DNA (5764 bp) on average] so that  
40 this alternative is unlikely. An alternative possibility is that platinum lesions represent a  
41 sterical blockage of RNA pol II inhibiting the prolongation of RNA transcript or that factors  
42 essential for RNA pol II initiation may also bind Pt-DNA adducts which do not represent their  
43 natural binding sites. Therefore, in the presence of sufficient numbers of Pt-DNA adducts,  
44  
45  
46  
47  
48  
49  
50  
51  
52  
53  
54  
55  
56  
57  
58  
59  
60  
61  
62  
63  
64  
65



1 these factors may become limiting, resulting in an inhibition of transcription initiation due to  
2 the factors being sequestered to platinated sites in DNA.  
3

4 We examined in the present work whether some elements of transcription complex might  
5 be hijacked by DNA adducts of complex **1** more or less than by those of cisplatin using a  
6 competition assay [29] (Fig. 6). The initial addition of control, unplatinated exogenous pUC19  
7 plasmid resulted in an overall increase in the amount of transcript generated by pCMV-Gluc  
8 substrate which increased only slightly upon the further addition of unplatinated exogenous  
9 plasmid. This increase in transcription efficiency has been already reported [29] and was  
10 attributed to an increase in macromolecular crowding induced by the presence higher amounts  
11 of DNA [29, 48]. We observed in the present work (Fig. 6), in accord with the previously  
12 published results [29], that RNA pol II transcription of pCMV-Gluc template was markedly  
13 reduced by the addition of increasing amounts of cisplatin modified exogenous plasmid (Fig.  
14 6). Thus, these results are consistent with the view and support the 'hijacking' hypothesis  
15 raised earlier for mononuclear Pt<sup>II</sup> drugs [29, 34, 49, 50] that RNA pol II transcription of  
16 template modified by cisplatin was inhibited in a substantial extent due to titrating some  
17 elements of transcription complex from their normal binding sites and in this way interfering  
18 with transcription.  
19

20 On the other hand, a markedly lower inhibition effect was seen if the transcription assay  
21 was performed in the presence of exogenous plasmid modified by complex **1** (Fig. 6). Thus,  
22 the stronger inhibition of transcription by DNA adducts of **1** appears to be due to  
23 pronouncedly more extensive sterical blockade of RNA pol II inhibiting the prolongation of  
24 RNA transcript than because of sequestering elements of transcription complex to platinated  
25 sites in DNA.  
26

27 The observation of the present work that transcription elongation by RNA pol II was  
28 inhibited by titrating some elements of transcription complex from their normal binding sites  
29

1 much more by DNA adducts of cisplatin than by those of dinuclear complex **1** (Fig. 6)  
2 deserves further discussion. Many transcription factors are HMG-domain proteins (HMG =  
3 high mobility group). These proteins have been shown to recognize and bind with a strong  
4 affinity to structural motifs in DNA that involve directional rigid bends of the longitudinal  
5 axis of this double-helical nucleic acid. Major DNA adducts of cisplatin (intrastrand  
6 crosslinks between neighboring purine residues which represent ~90% of all DNA adducts of  
7 cisplatin[51]) produce in DNA a stable directional curvature (~40° toward major groove of  
8 DNA) [34]. Therefore, this bending apparently represents an important structural motif  
9 responsible for a high affinity of many transcription factors to DNA modified by cisplatin. On  
10 the other hand, major DNA adducts of antitumor di/trinuclear Pt<sup>II</sup> compounds (long range  
11 intra- and interstrand crosslinks) rather produce in DNA a flexible and only small  
12 nondirectional bend (~10 °) so that these crosslinks are not recognized by HMG-domain  
13 proteins [6, 7, 10]. Hence, DNA adducts of **1** and other antitumor di/trinuclear Pt<sup>II</sup> compounds  
14 may lack, in contrast to DNA adducts of cisplatin, a high-affinity structural motif which  
15 would attract transcription factors.  
16  
17  
18  
19  
20  
21  
22  
23  
24  
25  
26  
27  
28  
29  
30  
31  
32  
33  
34  
35

36 Given the similarities in DNA binding between **1** and BBR3610 it was of interest to  
37 examine other pharmacological factors which might differentiate the biological activity of the  
38 two compounds. The present study also reveals that the cellular uptake of both compounds is  
39 considerably greater than that of cisplatin (Table 1 and Fig. S4). The cellular accumulation  
40 was also enhanced in A2780cisR cells resistant to cisplatin over sensitive A2780 cells (Table  
41 1), suggesting a mechanism for enhancement of tumor cell selectivity toward cisplatin-  
42 resistant cells. Thus, the results confirm a general property of charged di/trinuclear Pt<sup>II</sup>  
43 complexes, i.e. the enhanced accumulation [11, 52, 53], so that at least part of the cytotoxicity  
44 of the new complex **1** seems to be attributable to an increased intracellular platinum  
45 concentration.  
46  
47  
48  
49  
50  
51  
52  
53  
54  
55  
56  
57  
58  
59  
60  
61  
62  
63  
64  
65

1  
2  
3  
4  
5  
6  
7  
8  
9  
10  
11  
12  
13  
14  
15  
16  
17  
18  
19  
20  
21  
22  
23  
24  
25  
26  
27  
28  
29  
30  
31  
32  
33  
34  
35  
36  
37  
38  
39  
40  
41  
42  
43  
44  
45  
46  
47  
48  
49  
50  
51  
52  
53  
54  
55  
56  
57  
58  
59  
60  
61  
62  
63  
64  
65

The results of the present work also demonstrate that **1** reacts with GSH with a higher rate compared with cisplatin (Table 1, Fig. S3). Both clinical and preclinical studies have shown that cells with an elevated level of GSH (>10 mM) may be resistant to cisplatin and its analogues [54, 55]. Thus, although it has been shown that reaction of **1** with GSH does not result in linker cleavage and loss of its dinuclear structure, further studies are warranted to determine whether deactivation by GSH is a strongly unfavorable determinant of cytotoxic effects of **1**. This may be important because the significant difference between **1** and BBR3610 is in the consequences of reaction with GSH. BBR3610 undergoes decomposition of its dinuclear structure upon reaction with sulfur nucleophiles [16]. Despite this unfavorable attribute, BBR3610 has been shown to exhibit a remarkable efficacy against glioma and colon cancer cells in culture and animal models [14, 15], which provides a framework for investigation of mechanism of its action. This drug also reacts with GSH with a higher rate compared with cisplatin (Table 1, Fig. S3), but in this case loss of linker is expected [15, 56] which may unfavorably affect its toxicity. Further studies are warranted to dissect what part of the cytotoxicity of BBR3610 is attributable to its increased intracellular accumulation and is unfavorably affected by its faster reaction with GSH.

Results describing reactions of **1**, BBR3610 and cisplatin with GSH showed that the absorbance at 260 nm determined for the reaction of GSH with **1** was approximately 2-fold or 1.3-fold lower than that determined for the reaction of GSH with BBR3610 or cisplatin, respectively (Fig. S3, Table 1). Complex **1** based on 1,2-DACH as carrier ligand shows enhanced resistance to decomposition in the presence of sulfur nucleophiles so that the products afforded by the reaction of GSH with **1** contained only one GSH molecule coordinated per each Pt atom in **1** [18]. The absorbance at 260 nm reflects the presence of platinum-sulfur and disulfide bonds [25, 57], which can be interpreted to mean that under conditions of our experiments, i.e. in the presence of a surplus of GSH, the major products of

1 the reaction of this tripeptide with BBR3610 contained 2-fold amount of GSH per Pt atom  
2 than those afforded by the reaction of GSH with complex **1**. This interpretation is in excellent  
3 agreement with previous findings [13] showing that the degradation of the trans geometry in  
4 di-/trinuclear compounds in presence of the surplus of GSH results in two mononuclear  
5  
6  
7  
8  
9  
10  
11  
12  
13  
14  
15  
16  
17  
18  
19  
20  
21  
22  
23  
24  
25  
26  
27  
28  
29  
30  
31  
32  
33  
34  
35  
36  
37  
38  
39  
40  
41  
42  
43  
44  
45  
46  
47  
48  
49  
50  
51  
52  
53  
54  
55  
56  
57  
58  
59  
60  
61  
62  
63  
64  
65

the reaction of this tripeptide with BBR3610 contained 2-fold amount of GSH per Pt atom than those afforded by the reaction of GSH with complex **1**. This interpretation is in excellent agreement with previous findings [13] showing that the degradation of the trans geometry in di-/trinuclear compounds in presence of the surplus of GSH results in two mononuclear bissulfur Pt<sup>II</sup> species. *cis*-oriented compounds containing NH<sub>3</sub> nonleaving groups initially remain intact upon reaction with GSH; the reactions are slower than those with the trans isomers, but eventually the NH<sub>3</sub> group trans to the sulfur atom is lost [17]. Hence, this slow liberation of NH<sub>3</sub> from *cis*-[PtCl<sub>2</sub>(NH<sub>3</sub>)<sub>2</sub>] may result in some amount of mononuclear bissulfur Pt<sup>II</sup> species at the expense of those containing only one sulfur containing compound thereby increasing the mean number of sulfur-containing molecules bound per Pt<sup>II</sup> atom in products afforded by the reaction of GSH with cisplatin. Hence, the 1.3-fold higher absorption at 260 nm observed for the reaction of GSH with cisplatin (Fig. S3, Table 1) compared with the reaction of GSH with **1** (whose resistance to decomposition by sulfur nucleophiles is attributed to the chelate effect of the DACH ring [18]), may imply that ca. 30% products afforded by the reaction of GSH initially containing only one sulfur-containing molecule were slowly transformed to bissulfur Pt<sup>II</sup> species.

In conclusion, DNA adducts of dinuclear complex **1** not only block transcription markedly more efficiently than those of cisplatin, but also repair of adducts of **1** by the mammalian repair systems is markedly more reduced relative to repair of cisplatin (Fig. 4). Since DNA adducts of **1** can largely escape repair and yet inhibit very effectively transcription, they should persist longer than those of cisplatin. Hence, they could trigger a number of downstream cellular effects different from those triggered in cancer cells by DNA adducts of cisplatin. This might lead to the therapeutic effects that could radically improve chemotherapy by platinum complexes or could be at least an alternative to chemotherapy by platinum complexes already used in the clinic. Together, the findings of the present work help

1 understand differential pharmacological effects of **1** or BBR3610 and conventional  
2 mononuclear cisplatin and thereby make new insights into mechanisms associated with  
3  
4 antitumor effects of dinuclear/trinuclear platinum complexes possible.  
5  
6  
7  
8

### 9 **Acknowledgements**

10 This research was supported by the Ministry of Education of the CR (Grants LC06030,  
11  
12 6198959216, ME08017, OC08003, OC09018), the Academy of Sciences of the Czech  
13  
14 Republic (Grants 1QS500040581, KAN200200651, M200040901, AV0Z50040507 and  
15  
16 AV0Z50040702), the Grant Agency of the Academy of Sciences of the CR (IAA400040803),  
17  
18 and the Grant Agency of the CR (301/09/H004). J.K. is the international research scholar of  
19  
20 the Howard Hughes Medical Institute. The authors also acknowledge that their participation  
21  
22 in the EU COST Action D39 enabled them to exchange regularly the most recent ideas in the  
23  
24 field of anticancer metallodrugs with several European colleagues.  
25  
26  
27  
28  
29  
30  
31  
32  
33

### 34 **Appendix A. Supplementary data**

35  
36 Supplementary data associated with this article can be found, in the online version, at doi:  
37  
38

39 ...  
40  
41  
42  
43

### 44 **References**

- 45  
46 1. Vrana O, Brabec V, Kleinwächter V. Polarographic studies on the conformation of  
47  
48 some platinum complexes: relations to anti-tumour activity. *Anti-Cancer Drug Des*  
49  
50 1986;1:95-109.  
51  
52
- 53  
54 2. Farrell N, Kelland LR, Roberts JD, Van Beusichem M. Activation of the trans  
55  
56 geometry in platinum antitumor complexes: A Survey of the cytotoxicity of trans  
57  
58  
59  
60  
61  
62  
63  
64  
65

- 1 complexes containing planar ligands in murine-L1210 and human tumor panels and  
2 studies on their mechanism of action. *Cancer Res* 1992;52:5065-72.
- 3  
4  
5 3. Calvert PM, Highley MS, Hughes AN, Plummer ER, Azzabi AST, Verrill MW, et al.  
6  
7 A phase I study of a novel, trinuclear, platinum analogue, BBR3464, in patients with  
8  
9 advanced solid tumors. *Clin Cancer Res* 1999;5:3796.
- 10  
11  
12 4. Colella G, Pennati M, Bearzatto A, Leone R, Colangelo D, Manzotti C, et al. Activity  
13  
14 of a trinuclear platinum complex in human ovarian cancer cell lines sensitive and  
15  
16 resistant to cisplatin: cytotoxicity and induction and gene-specific repair of DNA  
17  
18 lesions. *Br J Cancer* 2001;84:1387-90.
- 19  
20  
21  
22 5. Jodrell DI, Evans TRJ, Steward W, Cameron D, Prendiville J, Aschele C, et al. Phase  
23  
24 II studies of BBR3464, a novel tri-nuclear platinum complex, in patients with gastric  
25  
26 or gastro-oesophageal adenocarcinoma. *Eur J Cancer* 2004;40:1872-7.
- 27  
28  
29 6. Kasparikova J, Farrell N, Brabec V. Sequence specificity, conformation, and  
30  
31 recognition by HMG1 protein of major DNA interstrand cross-links of antitumor  
32  
33 dinuclear platinum complexes. *J Biol Chem* 2000;275:15789-98.
- 34  
35  
36 7. Kasparikova J, Zehnulova J, Farrell N, Brabec V. DNA interstrand cross-links of the  
37  
38 novel antitumor trinuclear platinum complex BBR3464. Conformation, recognition by  
39  
40 high mobility group domain proteins, and nucleotide excision repair. *J Biol Chem*  
41  
42 2002;277:48076-86.
- 43  
44  
45  
46 8. Brabec V, Kasparikova J, Vrana O, Novakova O, Cox JW, Qu Y, et al. DNA  
47  
48 modifications by a novel bifunctional trinuclear platinum Phase I anticancer agent.  
49  
50 *Biochemistry* 1999;38:6781-90.
- 51  
52  
53 9. Kasparikova J, Novakova O, Vrana O, Farrell N, Brabec V. Effect of geometric  
54  
55 isomerism in dinuclear platinum antitumor complexes on DNA interstrand cross-  
56  
57 linking. *Biochemistry* 1999;38:10997-1005.
- 58  
59  
60  
61  
62  
63  
64  
65

- 1  
2  
3  
4  
5  
6  
7  
8  
9  
10  
11  
12  
13  
14  
15  
16  
17  
18  
19  
20  
21  
22  
23  
24  
25  
26  
27  
28  
29  
30  
31  
32  
33  
34  
35  
36  
37  
38  
39  
40  
41  
42  
43  
44  
45  
46  
47  
48  
49  
50  
51  
52  
53  
54  
55  
56  
57  
58  
59  
60  
61  
62  
63  
64  
65
10. Zehnulova J, Kasparikova J, Farrell N, Brabec V. Conformation, recognition by high mobility group domain proteins, and nucleotide excision repair of DNA intrastrand cross-links of novel antitumor trinuclear platinum complex BBR3464. *J Biol Chem* 2001;276:22191-9.
  11. Farrell N. Polynuclear platinum drugs. In: Sigel A, Sigel H, editors. *Metal Ions in Biological Systems*. New York, Basel: Marcel Dekker, Inc.; 2004. p. 251-96.
  12. Farrell N, Qu Y, Feng L, Van Houten B. Comparison of chemical reactivity, cytotoxicity, interstrand cross-linking and DNA sequence specificity of bis(platinum) complexes containing monodentate or bidentate coordination spheres with their monomeric analogues. *Biochemistry* 1990;29:9522-31.
  13. Oehlsen ME, Qu Y, Farrell N. Reaction of polynuclear platinum antitumor compounds with reduced glutathione studied by multinuclear ( $^1\text{H}$ ,  $^1\text{H}$ - $^{15}\text{N}$  gradient heteronuclear single-quantum coherence, and  $^{195}\text{Pt}$ ) NMR spectroscopy. *Inorg Chem* 2003;42:5498 - 506.
  14. Billecke C, Finniss S, Tahash L, Miller C, Mikkelsen T, Farrell NP, et al. Polynuclear platinum anticancer drugs are more potent than cisplatin and induce cell cycle arrest in glioma. *Neuro-Oncol* 2006;8:215-26.
  15. Mitchell C, Kabolizadeh P, Ryan J, Roberts JD, Yacoub A, Curiel DT, et al. Low-dose BBR3610 toxicity in colon cancer cells is p53-independent and enhanced by inhibition of epidermal growth factor receptor (ERBB1)-Phosphatidyl inositol 3 kinase signaling. *Mol Pharmacol* 2007;72:704-14.
  16. Summa N, Maigut J, Puchta R, van Eldik R. Possible biotransformation reactions of polynuclear Pt(II) complexes. *Inorg Chem* 2007;46:2094-104.

- 1  
2  
3  
4  
5  
6  
7  
8  
9  
10  
11  
12  
13  
14  
15  
16  
17  
18  
19  
20  
21  
22  
23  
24  
25  
26  
27  
28  
29  
30  
31  
32  
33  
34  
35  
36  
37  
38  
39  
40  
41  
42  
43  
44  
45  
46  
47  
48  
49  
50  
51  
52  
53  
54  
55  
56  
57  
58  
59  
60  
61  
62  
63  
64  
65
17. Oehlsen M, Hegmans A, Qu Y, Farrell N. Effects of geometric isomerism in dinuclear antitumor platinum complexes on their interactions with N-acetyl-L-methionine. *J. Biol. Inorg Chem* 2005;10:433-42.
  18. Williams JW, Qu Y, Bulluss GH, Alvorado E, Farrell NP. Dinuclear platinum complexes with biological relevance based on the 1,2-diaminocyclohexane carrier ligand. *Inorg Chem* 2007;46:5820-2.
  19. Rauter H, Di Domenico R, Menta E, Oliva A, Qu Y, Farrell N. Selective platination of biologically relevant polyamines. Linear coordinating spermidine and spermine as amplifying linkers in dinuclear platinum complexes. *Inorg Chem* 1997;36:3919-27.
  20. Brabec V, Palecek E. The influence of salts and pH on polarographic currents produced by denatured DNA. *Biophysik* 1970;6:290-300.
  21. Brabec V, Palecek E. Interaction of nucleic acids with electrically charged surfaces. II. Conformational changes in double-helical polynucleotides. *Biophys Chem* 1976;4:76-92.
  22. Reardon JT, Vaisman A, Chaney SG, Sancar A. Efficient nucleotide excision repair of cisplatin, oxaliplatin, and bis-aceto-amine-dichloro-cyclohexylamine-platinum(IV) (JM216) platinum intrastrand DNA diadducts. *Cancer Res* 1999;59:3968-71.
  23. Kim SD, Vrana O, Kleinwächter V, Niki K, Brabec V. Polarographic determination of subnanogram quantities of free platinum in reaction mixture with DNA. *Anal Lett* 1990;23:1505-18.
  24. Novakova O, Kasparkova J, Vrana O, van Vliet PM, Reedijk J, Brabec V. Correlation between cytotoxicity and DNA binding of polypyridyl ruthenium complexes. *Biochemistry* 1995;34:12369-78.
  25. Dabrowiak JC, Goodisman J, Souid AK. Kinetic study of the reaction of cisplatin with thiols. *Drug Metab Dispos* 2002;30:1378-84.



- 1  
2  
3  
4  
5  
6  
7  
8  
9  
10  
11  
12  
13  
14  
15  
16  
17  
18  
19  
20  
21  
22  
23  
24  
25  
26  
27  
28  
29  
30  
31  
32  
33  
34  
35  
36  
37  
38  
39  
40  
41  
42  
43  
44  
45  
46  
47  
48  
49  
50  
51  
52  
53  
54  
55  
56  
57  
58  
59  
60  
61  
62  
63  
64  
65
26. Brabec V, Leng M. DNA interstrand cross-links of trans-diamminedichloroplatinum(II) are preferentially formed between guanine and complementary cytosine residues. *Proc Natl Acad Sci USA* 1993;90:5345-9.
  27. Butour JL, Alvinerie P, Souchard JP, Colson P, Houssier C, Johnson NP. Effect of the amine nonleaving group on the structure and stability of DNA complexes with cis-[Pt(R-NH<sub>2</sub>)<sub>2</sub>(NO<sub>3</sub>)<sub>2</sub>]. *Eur J Biochem* 1991;202:975-80.
  28. Keck MV, Lippard SJ. Unwinding of supercoiled DNA by platinum ethidium and related complexes. *J Am Chem Soc* 1992;114:3386-90.
  29. Cullinane C, Mazur SJ, Essigmann JM, Phillips DR, Bohr VA. Inhibition of RNA polymerase II transcription in human cell extracts by cisplatin DNA damage. *Biochemistry* 1999;38:6204-12.
  30. Bagchi MK, Tsai SY, Weigel NL, Tsai MJ, O'Malley BW. Regulation of in vitro transcription by progesterone receptor. Characterization and kinetic studies. *J Biol Chem* 1990;265:5129-34.
  31. Vichi P, Coin F, Renaud JP, Vermeulen W, Hoeijmakers JHJ, Moras D, et al. Cisplatin- and UV-damaged DNA lure the basal transcription factor TFIID/TBP. *EMBO J* 1997;16:7444-56.
  32. Reedijk J. Why does cisplatin reach guanine-N7 with competing S-donor ligands available in the cell? *Chem Rev* 1999;99:2499-510.
  33. Romero-Isart N, Vasak M. Advances in the structure and chemistry of metallothioneins. *J Inorg Biochem* 2002;88:388-96.
  34. Jamieson ER, Lippard SJ. Structure, recognition, and processing of cisplatin-DNA adducts. *Chem Rev* 1999;99:2467-98.

- 1  
2  
3  
4  
5  
6  
7  
8  
9  
10  
11  
12  
13  
14  
15  
16  
17  
18  
19  
20  
21  
22  
23  
24  
25  
26  
27  
28  
29  
30  
31  
32  
33  
34  
35  
36  
37  
38  
39  
40  
41  
42  
43  
44  
45  
46  
47  
48  
49  
50  
51  
52  
53  
54  
55  
56  
57  
58  
59  
60  
61  
62  
63  
64  
65
35. Cullen KJ, Yang ZJ, Schumaker L, Guo ZM. Mitochondria as a critical target of the chemotherapeutic agent cisplatin in head and neck cancer. *J Bioenerg Biomembr* 2007;39:43-50.
  36. Rebillard A, Tekpli X, Meurette O, Sergent O, LeMoigne-Muller G, Vernhet L, et al. Cisplatin-induced apoptosis involves membrane fluidification via inhibition of NHE1 in human colon cancer cells. *Cancer Res* 2007;67:7865-74.
  37. Rangunathan N, Dairou J, Pluvillage B, Martins M, Petit E, Janel N, et al. Identification of the xenobiotic-metabolizing enzyme arylamine N-acetyltransferase 1 as a new target of cisplatin in breast cancer cells: Molecular and cellular mechanisms of inhibition. *Mol Pharmacol* 2008;73:1761-8.
  38. Jung Y, Lippard SJ. Direct cellular responses to platinum-induced DNA damage. *Chem Rev* 2007;107:1387-407.
  39. McGregor TD, Hegmans A, Kasparkova J, Neplechova K, Novakova O, Penazova H, et al. A comparison of DNA binding profiles of dinuclear platinum compounds with polyamine linkers and the trinuclear platinum phase II clinical agent BBR3464. *J Biol. Inorg Chem* 2002;7:397-404.
  40. Siddik ZH. Cisplatin: mode of cytotoxic action and molecular basis of resistance. *Oncogene* 2003;22:7265-79.
  41. Brabec V, Kasparkova J. Modifications of DNA by platinum complexes: Relation to resistance of tumors to platinum antitumor drugs. *Drug Resist Updates* 2005;8:131-46.
  42. Kelland L. The resurgence of platinum-based cancer chemotherapy. *Nature Rev Cancer* 2007;7:573-84.
  43. Tremeau-Bravard A, Riedl T, Egly J-M, Dahmus ME. Fate of RNA polymerase II stalled at a cisplatin lesion. *J Biol Chem* 2003;279:7751-9.

- 1  
2  
3  
4  
5  
6  
7  
8  
9  
10  
11  
12  
13  
14  
15  
16  
17  
18  
19  
20  
21  
22  
23  
24  
25  
26  
27  
28  
29  
30  
31  
32  
33  
34  
35  
36  
37  
38  
39  
40  
41  
42  
43  
44  
45  
46  
47  
48  
49  
50  
51  
52  
53  
54  
55  
56  
57  
58  
59  
60  
61  
62  
63  
64  
65
44. Tornaletti S, Patrick SM, Turchi JJ, Hanawalt PC. Behavior of T7 RNA polymerase and mammalian RNA polymerase II at site-specific cisplatin adducts in the template DNA. *J Biol Chem* 2003;278:35791-7.
  45. Damsma GE, Alt A, Brueckner F, Carell T, Cramer P. Mechanism of transcriptional stalling at cisplatin-damaged DNA. *Nature Struct Mol Biol* 2007;14:1127-33.
  46. Lovejoy KS, Todd RC, Zhang SZ, McCormick MS, D'Aquino JA, Reardon JT, et al. cis-diammine(pyridine)chloroplatinum(II), a monofunctional platinum(II) antitumor agent: Uptake, structure, function, and prospects. *Proc Natl Acad Sci USA* 2008;105:8902-7.
  47. Lee KB, Wang D, Lippard SJ, Sharp PA. Transcription-coupled and DNA damage dependent ubiquitination of RNA polymerase II in vitro. *Proc Natl Acad Sci U.S.A.* 2002;99:4239-44.
  48. Garner MM, Burg MB. Macromolecular crowding and confinement in cells exposed to hypertonicity. *Am J Physiol* 1994;266:C877-C92.
  49. Zhai XQ, Beckmann H, Jantzen HM, Essigmann JM. Cisplatin-DNA adducts inhibit ribosomal RNA synthesis by hijacking the transcription factor human upstream binding factor. *Biochemistry* 1998;37:16307-15.
  50. Ise T, Nagatani G, Imamura T, Kato K, Takano H, Nomoto M, et al. Transcription factor Y-box binding protein 1 binds preferentially to cisplatin-modified DNA and interacts with proliferating cell nuclear antigen. *Cancer Res* 1999;59:342-6.
  51. Fichtinger-Schepman AMJ, Van der Veer JL, Den Hartog JHJ, Lohman PHM, Reedijk J. Adducts of the antitumor drug cis-diamminedichloroplatinum(II) with DNA: Formation, identification, and quantitation. *Biochemistry* 1985;24:707-13.

- 1  
2  
3  
4  
5  
6  
7  
8  
9  
10  
11  
12  
13  
14  
15  
16  
17  
18  
19  
20  
21  
22  
23  
24  
25  
26  
27  
28  
29  
30  
31  
32  
33  
34  
35  
36  
37  
38  
39  
40  
41  
42  
43  
44  
45  
46  
47  
48  
49  
50  
51  
52  
53  
54  
55  
56  
57  
58  
59  
60  
61  
62  
63  
64  
65
52. Roberts JD, Beggiolin G, Manzotti C, Piazzoni L, Farrell N. Comparison of cytotoxicity and cellular accumulation of polynuclear platinum complexes in L1210 murine leukemia cell lines. *J Inorg Biochem* 1999;77:47-50.
53. Harris AL, Ryan JJ, Farrell N. Biological consequences of trinuclear platinum complexes: comparison of  $[\{\text{trans-PtCl}(\text{NH}_3)_2\}_2\mu\text{-(trans-Pt}(\text{NH}_3)_2(\text{H}_2\text{N}(\text{CH}_2)_6\text{-NH}_2)_2)]^{4+}$  (BBR 3464) with its noncovalent congeners. *Mol Pharmacol* 2006;69:666-72.
54. Reedijk J, Teuben JM. Platinum-sulfur interactions involved in antitumor drugs, rescue agents, and biomolecules. In: Lippert B, editor. *Cisplatin Chemistry and Biochemistry of a Leading Anticancer Drug*. Zürich, Weinheim: VHCA, Wiley-VCH; 1999. p. 339-62.
55. Wang X, Guo Z. The role of sulfur in platinum anticancer chemotherapy. *Anti-Cancer Agents Med Chem* 2007;7:19-34.
56. Zhang J, Thomas DS, Berners-Price SJ, Farrell N. Effects of geometric isomerism and anions on the kinetics and mechanism of the stepwise formation of long-range DNA interstrand cross-links by dinuclear platinum antitumor complexes. *Chem Eur J* 2008;14:6391-405.
57. Hagrman D, Goodisman J, Dabrowiak JC, Souid AK. Kinetic study on the reaction of cisplatin with metallothionein. *Drug Metabol Disp* 2003;31:916-23.
58. Bancroft DP, Lepre CA, Lippard SJ.  $^{195}\text{Pt}$  NMR kinetic and mechanistic studies of cis-diamminedichloroplatinum and trans-diamminedichloroplatinum(II) binding to DNA. *J Am Chem Soc* 1990;112:6860-71.

Accepted Manuscript

1  
2  
3  
4  
5  
6  
7  
8  
9  
10  
11  
12  
13  
14  
15  
16  
17  
18  
19  
20  
21  
22  
23  
24  
25  
26  
27  
28  
29  
30  
31  
32  
33  
34  
35  
36  
37  
38  
39  
40  
41  
42  
43  
44  
45  
46  
47  
48  
49  
50  
51  
52  
53  
54  
55  
56  
57  
58  
59  
60  
61  
62  
63  
64  
65

Table 1. Summary of the effects of complex **1**, BBR3610 and cisplatin observed in this work

	<b>1</b>	BBR3610	cisplatin
DNA binding ( $t_{50\%}$ ) (min) <sup>a</sup>	87.4±0.8	78.0±0.8	120 <sup>b</sup>
Preferential DNA binding sites <sup>c</sup>	G, GG, C	G, GG, C	GG, AG
% interstrand crosslinks/adduct <sup>a</sup>	23±4	26±5	6 <sup>d</sup>
Reduction of EtBr fluorescence	strong	strong	medium
Plasmid DNA unwinding angle/adduct <sup>a</sup>	13±2°	14±2°	13 <sup>e</sup>
Inhibition of transcription by RNA pol II <sup>a</sup>	strong	ND	medium
DNA repair synthesis (%) <sup>a</sup>	55±7	58±3	100
Reaction with GSH <sup>a</sup>			
$t_{1/2}$ (min)	84	135	109
absorbance at 260 nm after 200 min	0.17	0.35	0.22
Uptake (pmole Pt complex/10 <sup>6</sup> cells) after 24 h treatment			
by A2780 cells <sup>f</sup>	37±3	71±14	20±11
by A2780cisR cells <sup>g</sup>	203±41	213±5	84±15

<sup>a</sup> See the text for details.

<sup>b</sup> Ref. [58].

<sup>c</sup> Determined by replication mapping.

<sup>d</sup> Ref. [26].

<sup>e</sup> Ref. [28].

<sup>f</sup> Cells were treated with the Pt complex at the concentration of 2.8 μM.

<sup>g</sup> Cells were treated with the Pt complex at the concentration of 18.6 μM.

## Figure Captions

1  
2  
3  
4  
5 Fig. 1 - Structures of the platinum complexes  
6  
7  
8

9  
10 Fig. 2 - Replication mapping of platinum-DNA adducts. A. Autoradiogram of 6%  
11 polyacrylamide/8 M urea sequencing gel showing inhibition of DNA synthesis by VentR  
12 DNA polymerase on the pSP73 plasmid DNA linearized by HpaI restriction enzyme and  
13 subsequently modified by platinum complexes. The gel contained the linear amplification  
14 products of control, non-platinated DNA and DNA treated with **1**, BBR3610, cisplatin or  
15 transplatin. Lanes: 1 and 2, DNA modified by **1** at  $r_b = 0.005$  and  $0.01$ , respectively; 3 and 4,  
16 DNA modified by BBR3610 at  $r_b = 0.005$  and  $0.01$ , respectively, C, G, T, A, chain-  
17 terminated marker DNAs (note that these dideoxy sequencing lanes give the sequence  
18 complementary to the template strand); 5,6, DNA modified cisplatin or transplatin,  
19 respectively at  $r_b = 0.01$ ; 7, unmodified template. The numbers correspond to the nucleotide  
20 sequence numbering of part B. B. Schematic diagram showing a portion of the sequence used  
21 to monitor inhibition of DNA synthesis on the template containing adducts of platinum  
22 complexes. The arrow indicates the direction of the synthesis. ●, major stop signals from part  
23 A, lane 5; ○, major stop signals from part A, lane 6; ▲, major stop signals from part A,  
24 lanes 1, 2, 3, and 4. The numbering of the nucleotides in this scheme corresponds to the  
25 numbering of the nucleotides in the pSP73 nucleotide sequence map.  
26  
27  
28  
29  
30  
31  
32  
33  
34  
35  
36  
37  
38  
39  
40  
41  
42  
43  
44  
45  
46  
47  
48  
49  
50

51 Fig. 3 - Ethidium bromide fluorescence. Dependences of the EtBr fluorescence on  $r_b$  for CT  
52 DNA modified by various platinum complexes in 10 mM NaClO<sub>4</sub> at 37 °C for 24 h. (■),  
53 complex **1**; (∇), BBR3610; (Δ), cisplatin; (○) [PtCl(dien)]Cl.  
54  
55  
56  
57  
58  
59  
60  
61  
62  
63  
64  
65

1  
2  
3  
4  
5  
6  
7  
8  
9  
10  
11  
12  
13  
14  
15  
16  
17  
18  
19  
20  
21  
22  
23  
24  
25  
26  
27  
28  
29  
30  
31

Fig. 4 - *In Vitro* DNA repair synthesis assay of the extract prepared from the repair-proficient HeLa cell line. Repair synthesis used as substrates nonmodified pBR322 plasmid and pUC19 plasmid nonmodified or modified at  $r_b = 0.03$  by cisplatin, complex **1**, and BBR3610. A. Results of a typical experiment. Top panel, a photograph of the EtBr stained gel; bottom panel, autoradiogram of the gel showing incorporation of  $[\alpha\text{-}^{32}\text{P}]\text{dCMP}$ . Lanes: 1, nonmodified pBR322 plus pUC19 plasmids; 2, nonmodified pBR322 plus pUC19 modified by cisplatin; 3, nonmodified pBR322 plus pUC19 modified by **1**; 4, nonmodified pBR322 plus pUC19 modified by BBR3610. B. Incorporation of dCMP into nonmodified or platinated pUC19 plasmid. For all quantifications representing mean values of three separate experiments, incorporation of radioactive material is corrected for the relative DNA content in each band. The radioactivity associated with the incorporation of  $[\alpha\text{-}^{32}\text{P}]\text{dCMP}$  into DNA modified by cisplatin was taken as 100%. Bars indicate SEM.

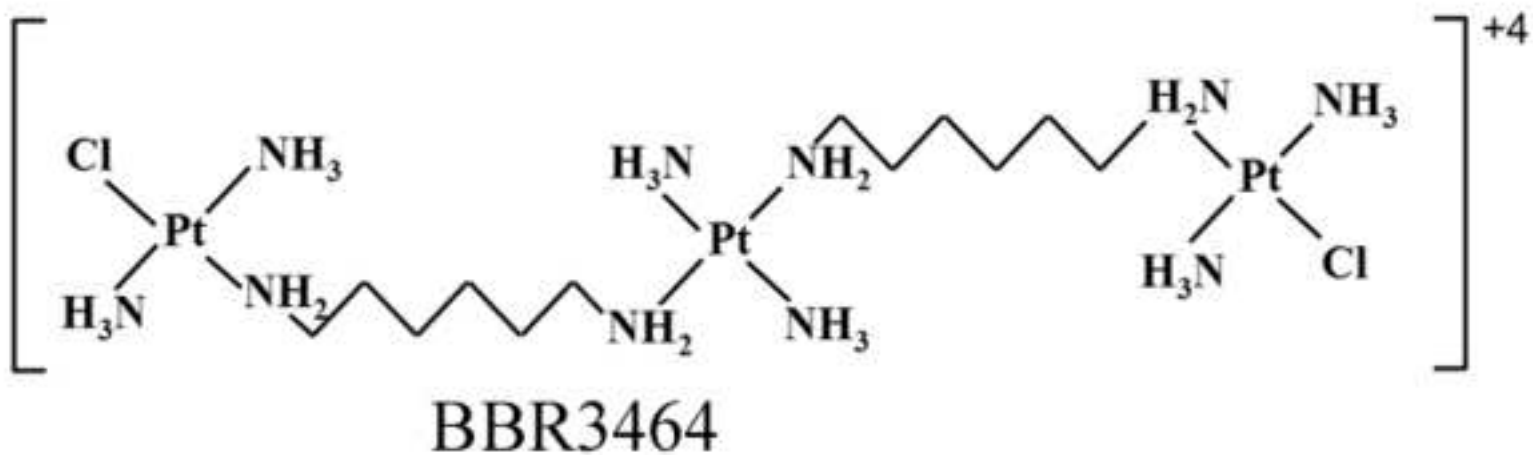
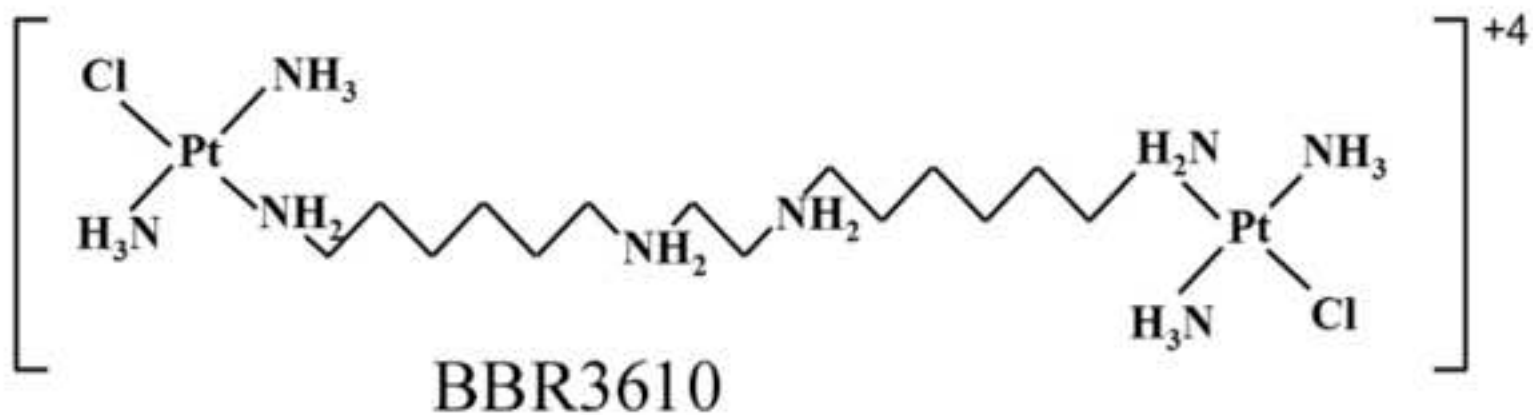
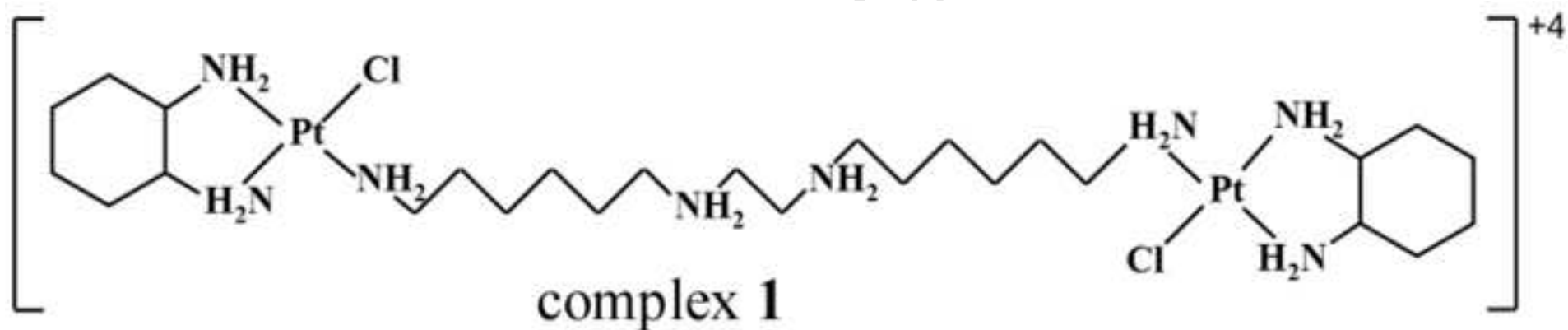
32  
33  
34  
35  
36  
37  
38  
39  
40  
41  
42  
43  
44  
45  
46  
47  
48  
49  
50  
51  
52  
53  
54  
55  
56  
57  
58  
59  
60  
61  
62  
63  
64  
65

Fig. 5 - Inhibition of RNA polymerase II transcription by DNA adducts of complex **1** or cisplatin. A. Autoradiogram of the 8 % PAA/8 M urea denaturing gel. Lanes: M, 100 bp DNA marker; 1, control, nonplatinated pCMV-Gluc substrate; 2, 3, and 4, pCMV-Gluc substrate modified by cisplatin at  $r_b = 8 \times 10^{-4}$ ,  $1.6 \times 10^{-3}$  and  $3.2 \times 10^{-3}$ , respectively; 5, 6 and 7, pCMV-Gluc substrate modified by complex **1** at  $r_b = 8 \times 10^{-4}$ ,  $1.6 \times 10^{-3}$  and  $3.2 \times 10^{-3}$ , respectively; 8, nonmodified substrate, no extract added. B. Quantitative assessment. The relative transcription was assed as follows: The amount of full length transcript at each  $r_b$  was quantitated (in % of total radioactivity in the lane) and calculated as the percentage of that generated by the control, nondamaged template. Data represent results of two independent experiments and are expressed as mean percentage  $\pm$  SEM. For other details, see the text.



1  
2  
3  
4  
5  
6  
7  
8  
9  
10  
11  
12  
13  
14  
15  
16  
17  
18  
19  
20  
21  
22  
23  
24  
25  
26  
27  
28  
29  
30  
31  
32  
33  
34  
35  
36  
37  
38  
39  
40  
41  
42  
43  
44  
45  
46  
47  
48  
49  
50  
51  
52  
53  
54  
55  
56  
57  
58  
59  
60  
61  
62  
63  
64  
65

Fig. 6 - Inhibition of RNA polymerase II transcription by the addition of exogenously platinated DNA. Plasmid pUC19 unplatinated or modified by cisplatin or complex **1** at  $r_b = 0.05$  was used as exogenous DNA substrates. A. Autoradiogram of the 8 % PAA/8M urea denaturing gel. Lanes: 1, transcription experiment was performed in the absence of exogenous plasmid (control); 2-4, transcription experiment was performed in the presence of 30, 60, and 120 ng of exogenous unplatinated plasmid, respectively; 5-7, transcription experiment was performed in the presence of 30, 60, and 120 ng of exogenous plasmid modified by complex **1**, respectively; 8-10, transcription experiment was performed in the presence of 30, 60, and 120 ng of exogenous plasmid modified by cisplatin, respectively. B. The amount of full-length transcript in each lane expressed as a mean fraction ( $\pm$  SEM) of that generated in the absence of exogenously added DNA (white bar). The black bars represent transcription in the presence of undamaged DNA, the gray bars transcription in the presence of cisplatin modified DNA and the light gray bars transcription in the presence of DNA modified by complex **1**. For other details, see the text.



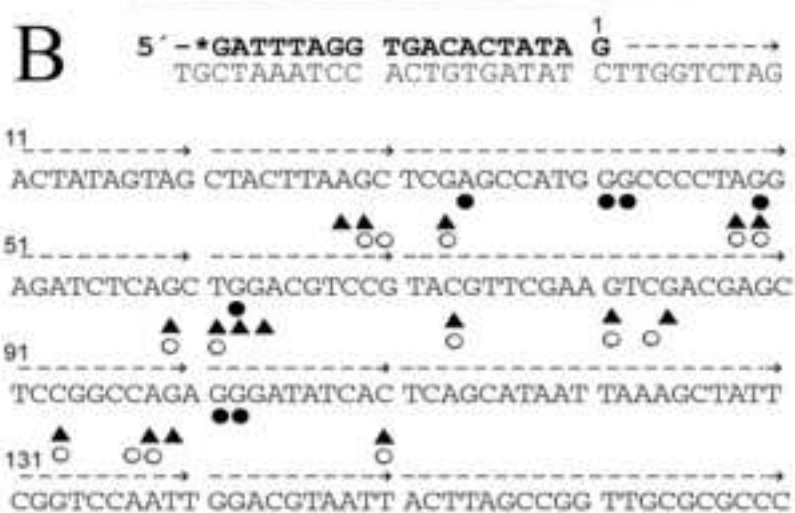
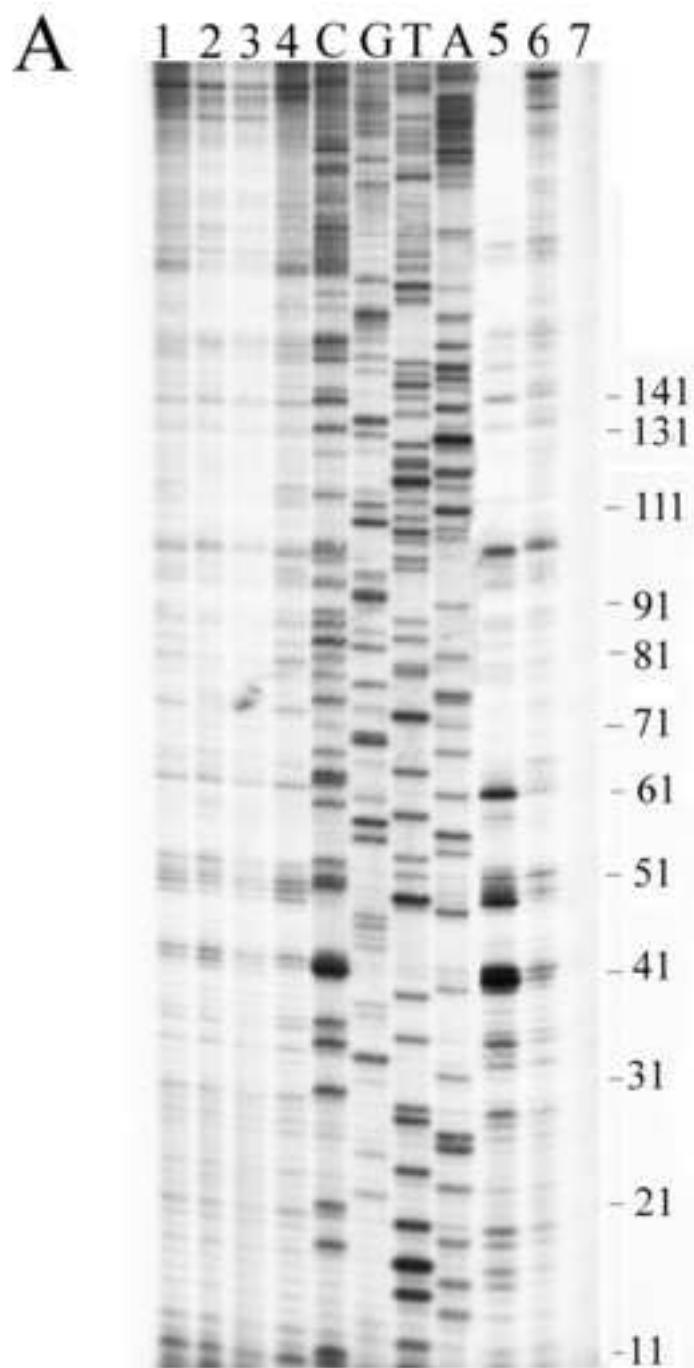


Figure 3

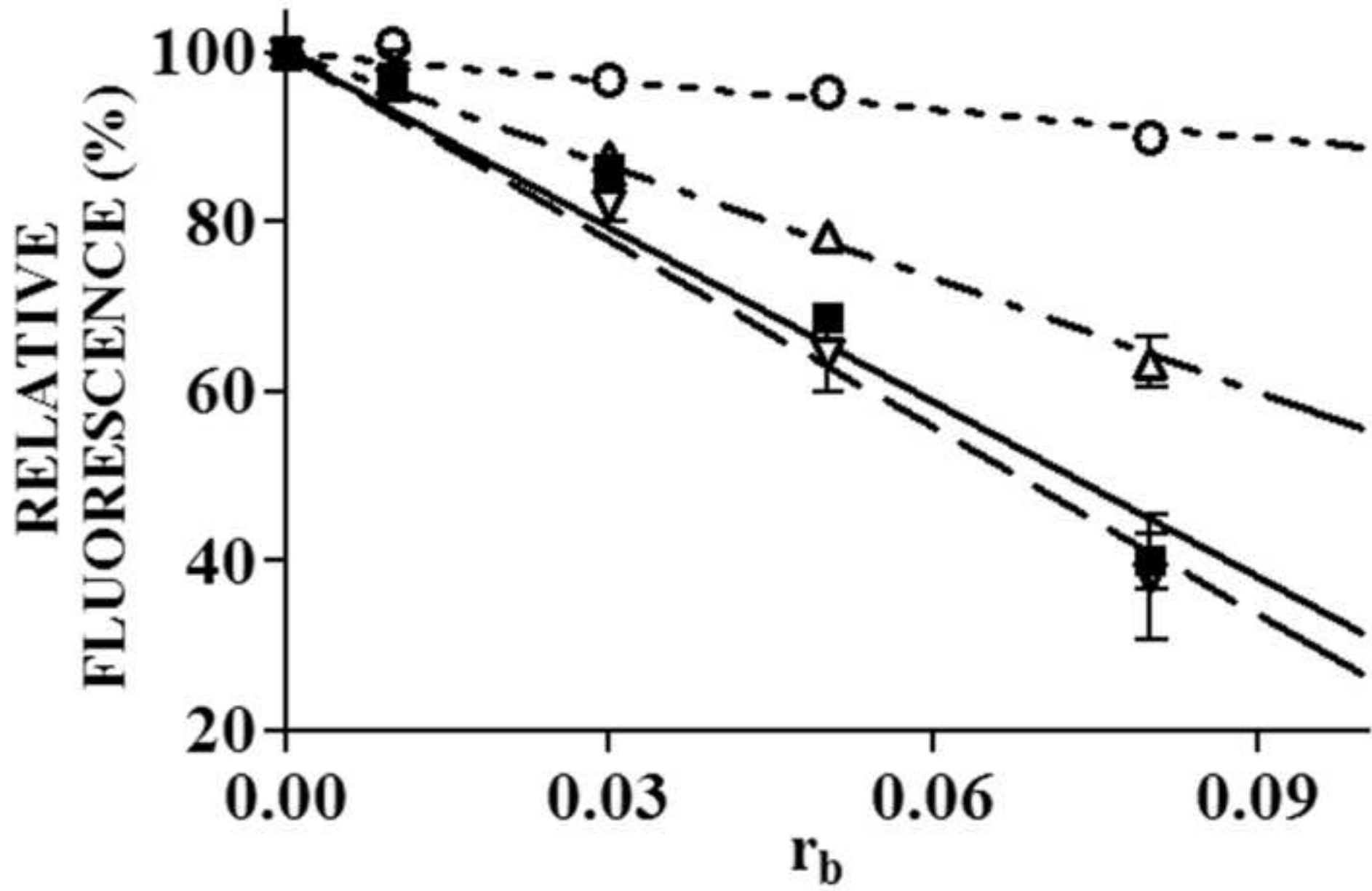


Figure 4

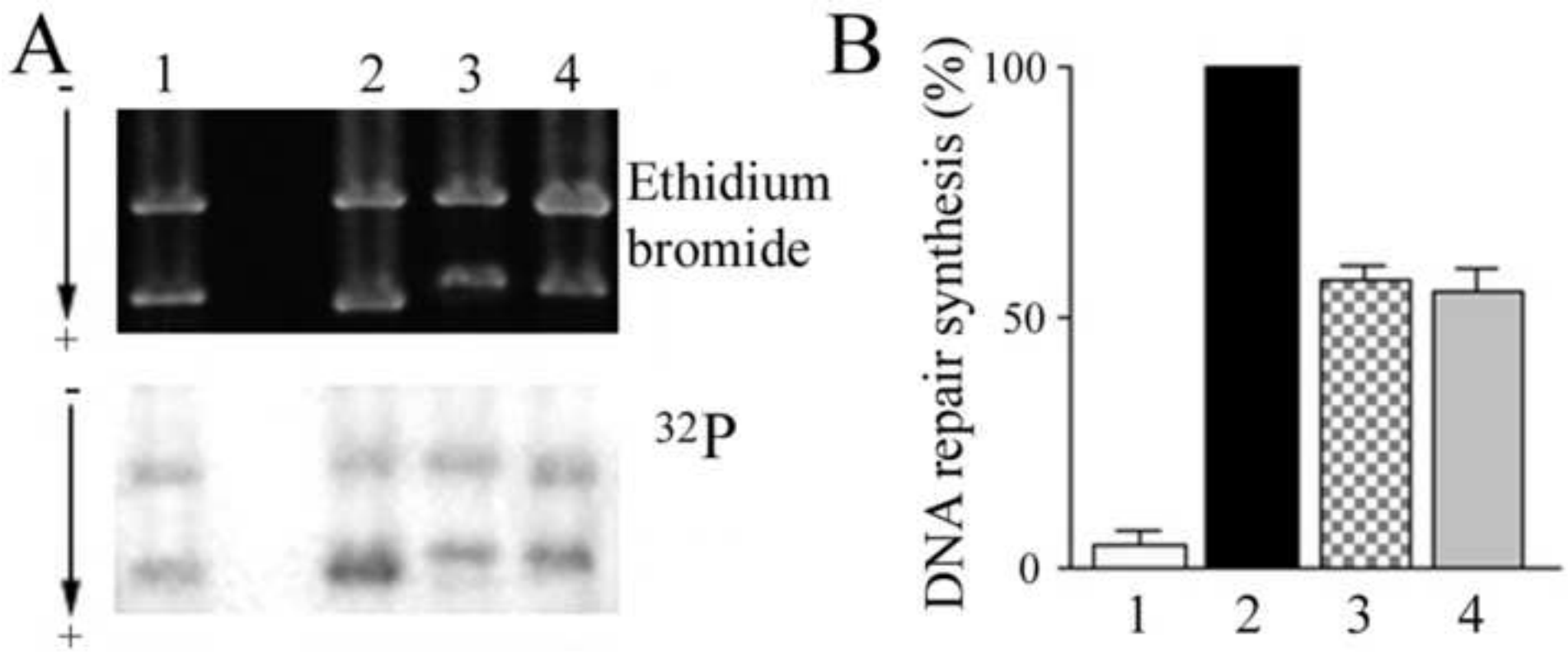
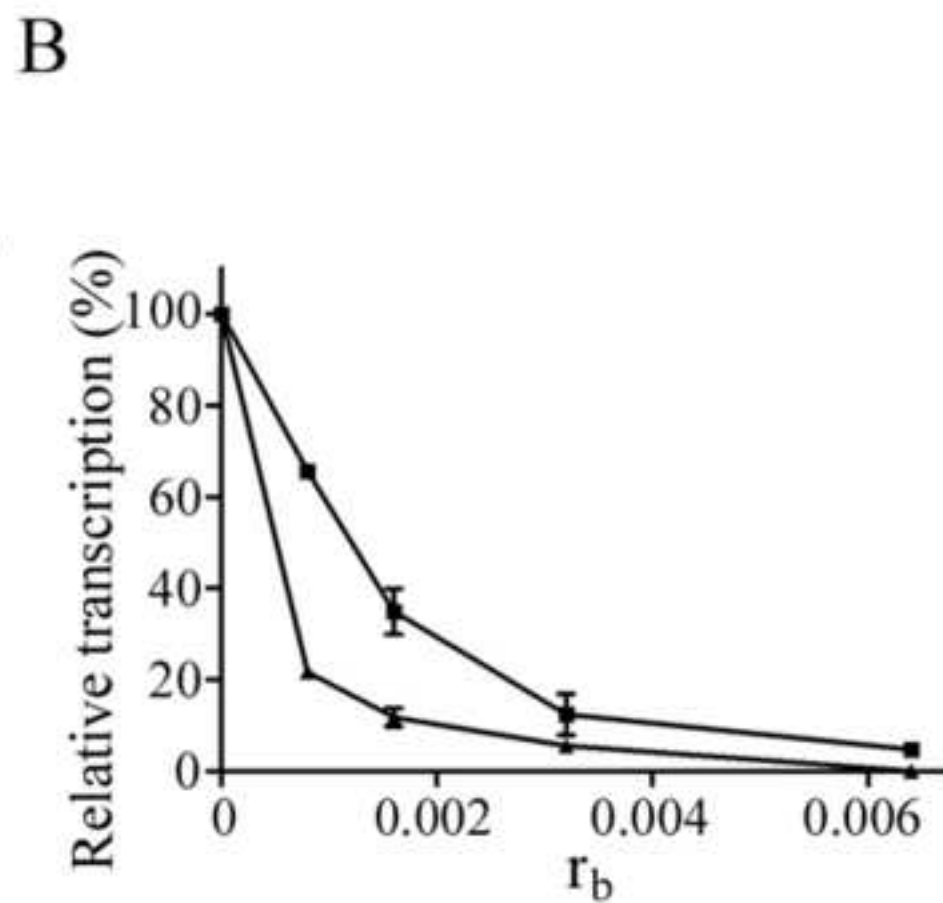
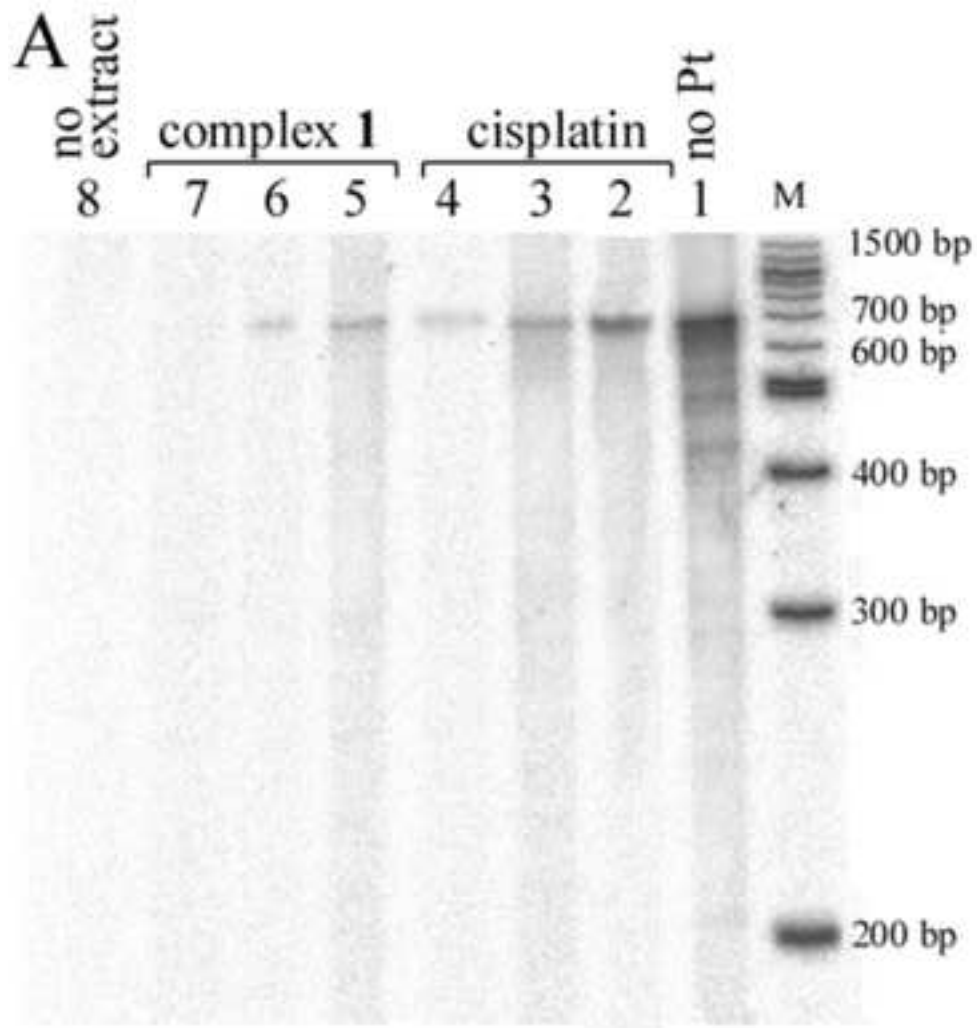
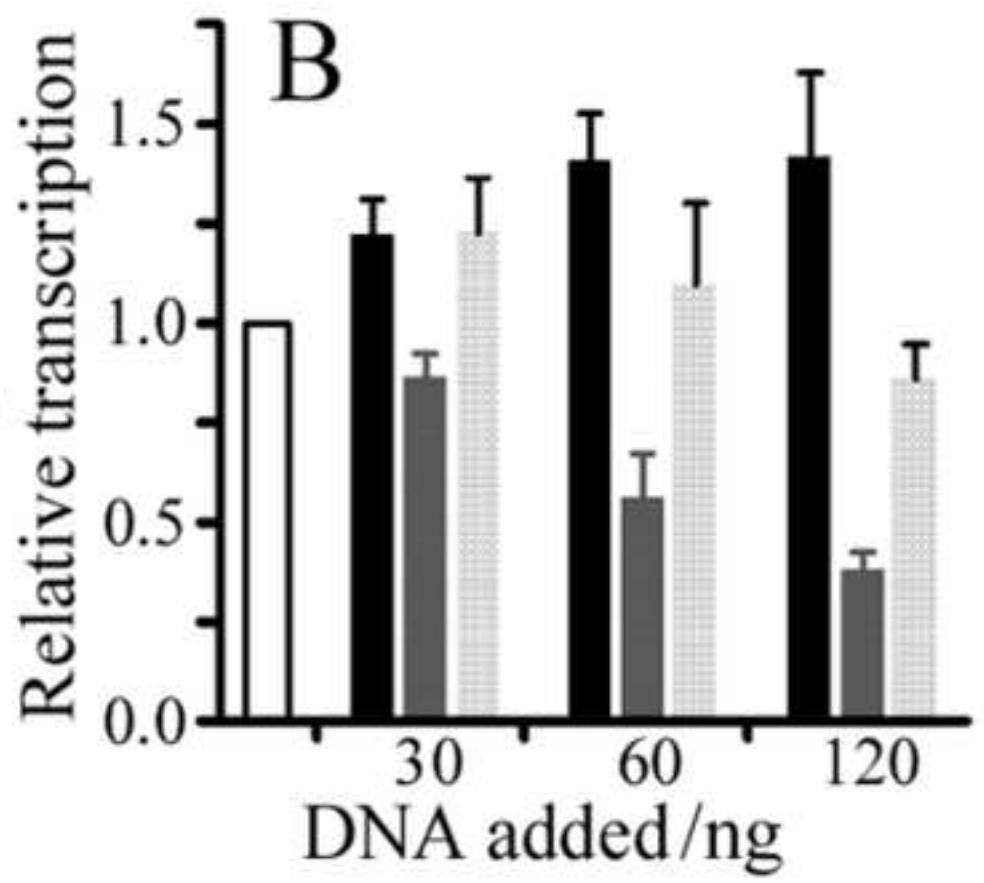
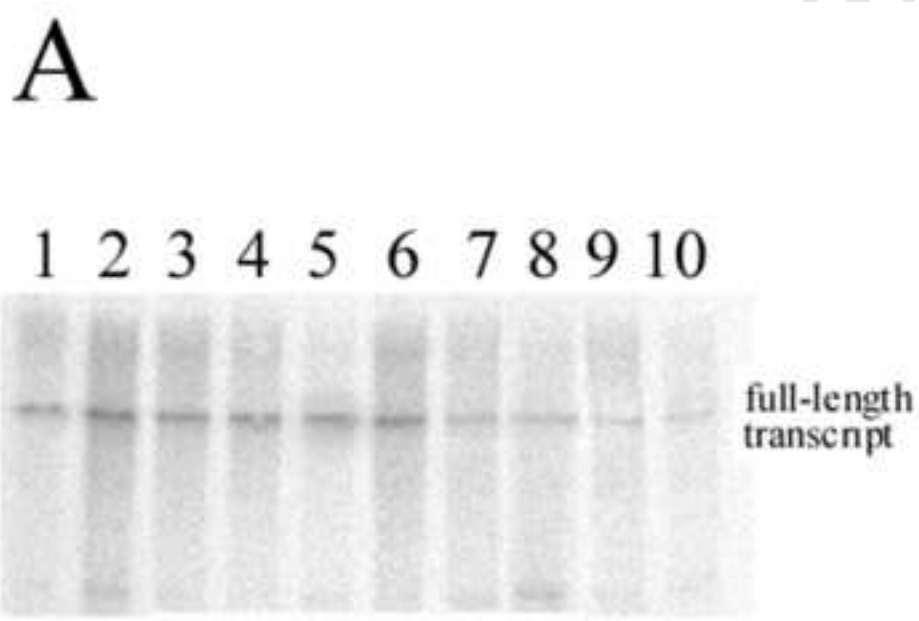


Figure 5



manuscript



Supplementary material for:

## Conformation and recognition of DNA modified by a new dinuclear Pt<sup>II</sup> complex resistant to decomposition by sulfur nucleophiles

Lenka Zerzankova<sup>a</sup>, Tereza Suchankova<sup>b</sup>, Oldrich Vrana<sup>a</sup>,  
Nicholas P. Farrell<sup>c</sup>, Viktor Brabec<sup>a</sup>, Jana Kasparkova<sup>a,\*</sup>

<sup>a</sup>*Institute of Biophysics, Academy of Sciences of the Czech Republic, v.v.i., Kralovopolska 135, CZ-61265 Brno, Czech Republic*

<sup>b</sup>*Laboratory of Biophysics, Department of Experimental Physics, Faculty of Sciences, Palacky University, tr. Svobody 26, CZ-77146 Olomouc, Czech Republic*

<sup>c</sup>*Department of Chemistry, Virginia Commonwealth University, Richmond, Virginia 23284-2006, USA*

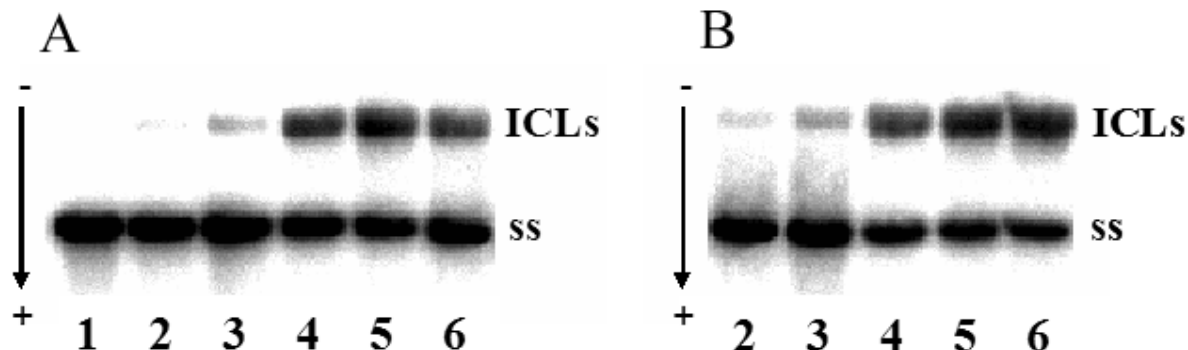


Fig. S1 - The formation of interstrand cross-links by complex **1** and BBR3610 in linearized pSP73 plasmid. Autoradiograms of denaturing 1% agarose gels of linearized DNA which was 3'-end labeled. The interstrand cross-linked DNA appears as the top bands migrating on the gel more slowly than the single-stranded DNA (contained in the bottom bands). Lanes: 1, control, unplatinated plasmid linearized by EcoRI. 2-6, linearized plasmid modified by complex **1** (A) or BBR3610 (B) at  $r_b$  values of 0.5, 1, 3, 4, 5  $\times 10^{-4}$ , respectively.



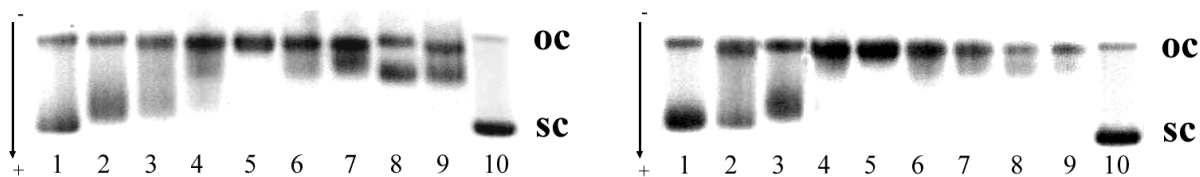


Fig. S2 - Unwinding of supercoiled pSP73 plasmid DNA by complex **1** (A) and BBR3610 (B). The top bands correspond to the form of nicked plasmid and the bottom bands to closed, negatively supercoiled plasmid. The plasmid was incubated at the  $r_b$  values of 0 (control) (lane 10), 0.01, 0.02, 0.03, 0.04, 0.05, 0.06, 0.07, 0.08, 0.09 (lanes 1-9, respectively).

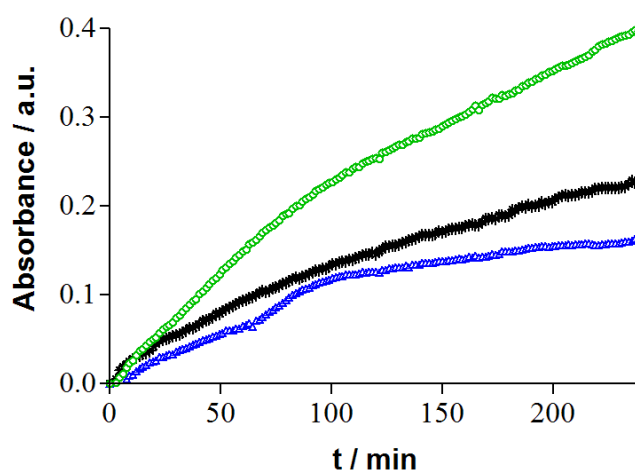


Fig. S3 - UV absorbance associated with the reaction of complexes **1**, BBR3610, and cisplatin with GSH. Absorbance at 260 nm is shown as a function of time for a 240-min incubation at 37 °C of complexes **1**, BBR3610, or cisplatin at the concentration of 33  $\mu$ M with 15 mM GSH in the medium of 10 mM NaClO<sub>4</sub> plus 0.1 mM phosphate buffer, pH 7.0, in the dark. The curves represent absorbances (260 nm) of a solution containing platinum complex plus GSH from which absorbance yielded by GSH alone was subtracted. Curves: blue, complex **1**; green, BBR3610; black, cisplatin.

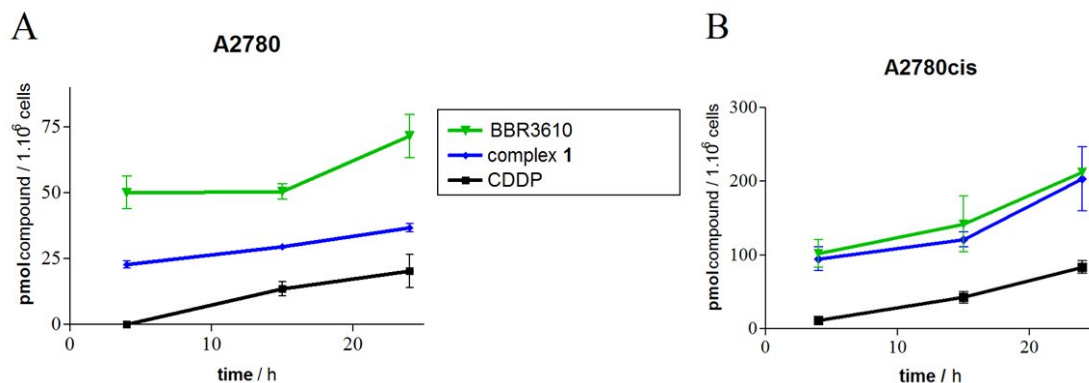


Fig. S4 - Cellular platinum accumulation in A2780 (A) and A2780cisR (B) cell lines (sensitive and resistant to cisplatin, respectively). A2780 and A2780cisR cells were treated with the platinum compounds at the concentration 2.8  $\mu$ M and 18.6  $\mu$ M, respectively. For other details, see the Experimental part of the main text.

### Experimental Part

**Interstrand crosslink assay.** The platinum complexes at varying concentrations were incubated for 24 h with 500 ng of pSP73 DNA linearized by *Eco*RI and 3'-end labeled by means of Klenow fragment from DNA polymerase I in the presence of [ $\alpha$ - $^{32}$ P]dATP. The number of interstrand crosslinks was analyzed by electrophoresis under denaturing conditions on alkaline agarose gel (1%). After the electrophoresis had been completed, the intensities of the bands corresponding to single strands of DNA and interstrand crosslinked duplex were quantified. The frequency of interstrand crosslinks was calculated as %ICL/molecule of Pt complex (the number of interstrand crosslinks per adduct) =  $XL/4928 \cdot r_b$  (pSP73 plasmid contained 4928 nucleotide residues). XL is the number of interstrand crosslinks per molecule of the linearized DNA duplex which was calculated assuming Poisson distribution of the interstrand crosslinks as  $XL = -\ln A$ , where A is the fraction of molecules running as a band corresponding to the non-cross-linked DNA [1].

**Unwinding of negatively supercoiled DNA.** Unwinding of closed circular supercoiled pSP73 plasmid DNA was assayed by an agarose gel mobility shift assay [2]. The unwinding angle  $\Phi$ , induced per Pt-DNA adduct was calculated upon the determination of the  $r_b$  value at which the complete transformation of the supercoiled to relaxed form of the plasmid was attained. Samples of plasmid DNA were incubated with platinum compounds at 37  $^{\circ}$ C in the dark for 24 h. The samples were subsequently subjected to electrophoresis on 1% agarose gel running at 25  $^{\circ}$ C in the dark with tris(hydroxymethyl)aminomethane (Tris)-acetate-EDTA buffer and the voltage set at 25 V. The gels were then stained with ethidium bromide, followed by photography with transilluminator.

### References

- [1] Brabec V, Leng M. DNA interstrand cross-links of trans-diamminedichloroplatinum(II) are preferentially formed between guanine and complementary cytosine residues. *Proc Natl Acad Sci USA* 1993;90:5345-9.
- [2] Keck MV, Lippard SJ. Unwinding of supercoiled DNA by platinum ethidium and related complexes. *J Am Chem Soc* 1992;114:3386-90.