



HAL
open science

Metasomatic effects in the lithospheric mantle beneath the NE Bohemian Massif: a case study of Lutynia (SW Poland) peridotite xenoliths

Magdalena Matusiak-Malek, Jacek Puziewicz, Theodoros Ntaflos, Michel Grégoire, Hilary Downes

► To cite this version:

Magdalena Matusiak-Malek, Jacek Puziewicz, Theodoros Ntaflos, Michel Grégoire, Hilary Downes. Metasomatic effects in the lithospheric mantle beneath the NE Bohemian Massif: a case study of Lutynia (SW Poland) peridotite xenoliths. *Lithos*, 2010, 117, pp.49-60. 10.1016/j.lithos.2010.02.005 . hal-00535791

HAL Id: hal-00535791

<https://hal.science/hal-00535791>

Submitted on 12 Nov 2010

HAL is a multi-disciplinary open access archive for the deposit and dissemination of scientific research documents, whether they are published or not. The documents may come from teaching and research institutions in France or abroad, or from public or private research centers.

L'archive ouverte pluridisciplinaire **HAL**, est destinée au dépôt et à la diffusion de documents scientifiques de niveau recherche, publiés ou non, émanant des établissements d'enseignement et de recherche français ou étrangers, des laboratoires publics ou privés.

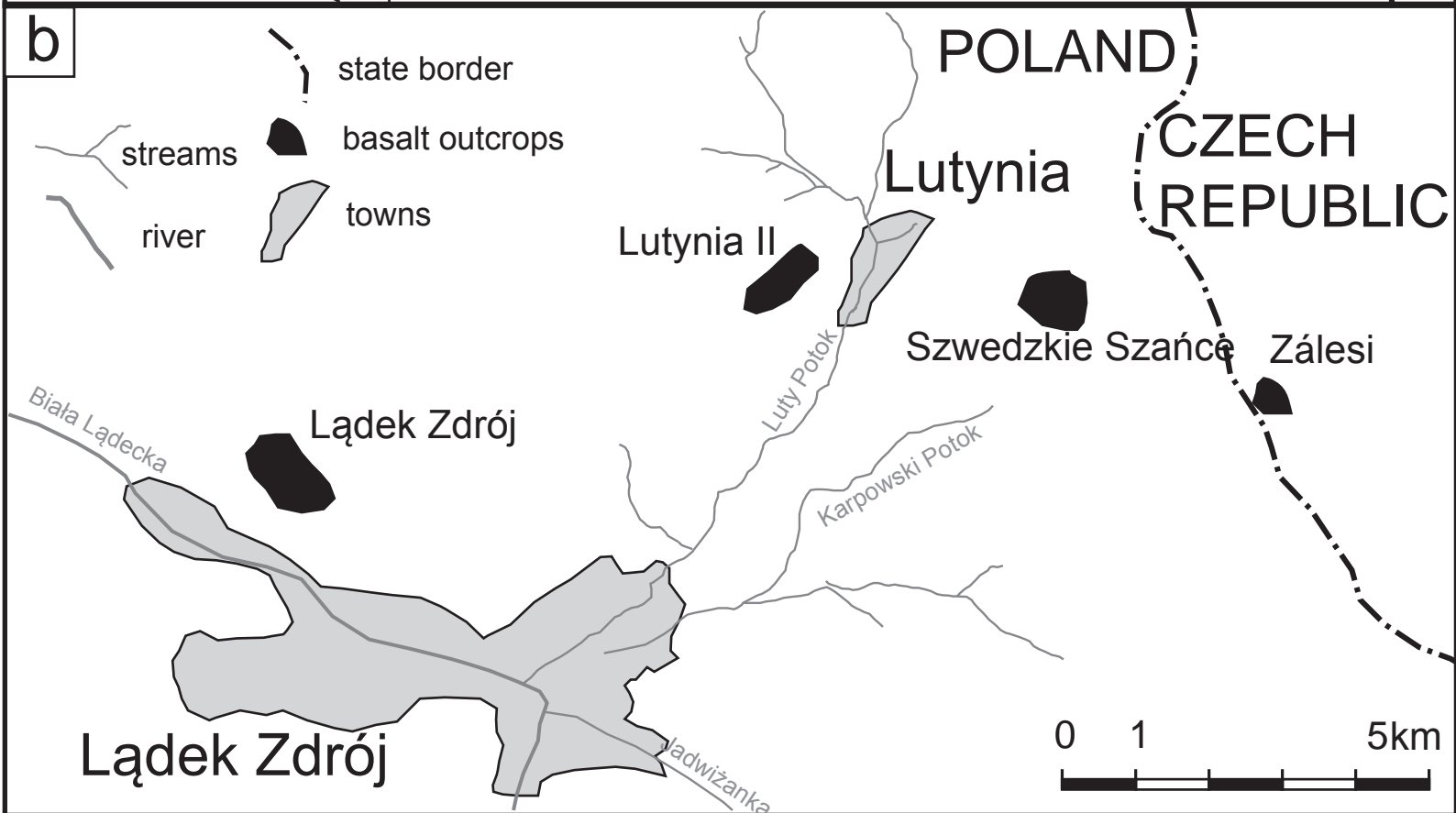
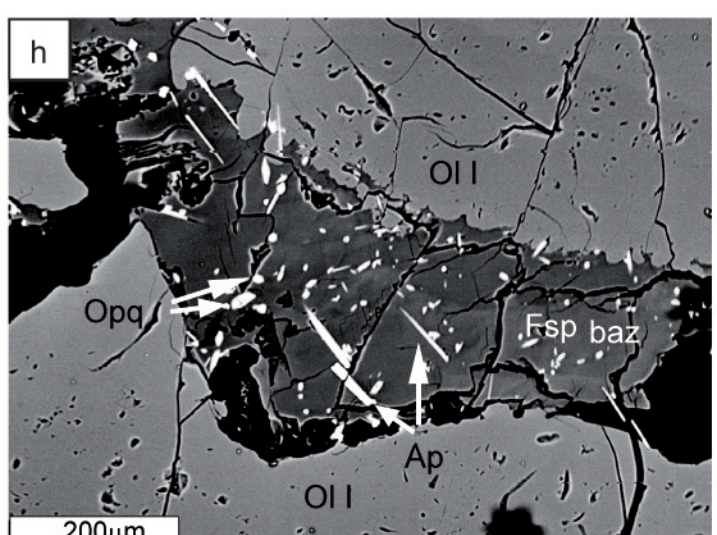
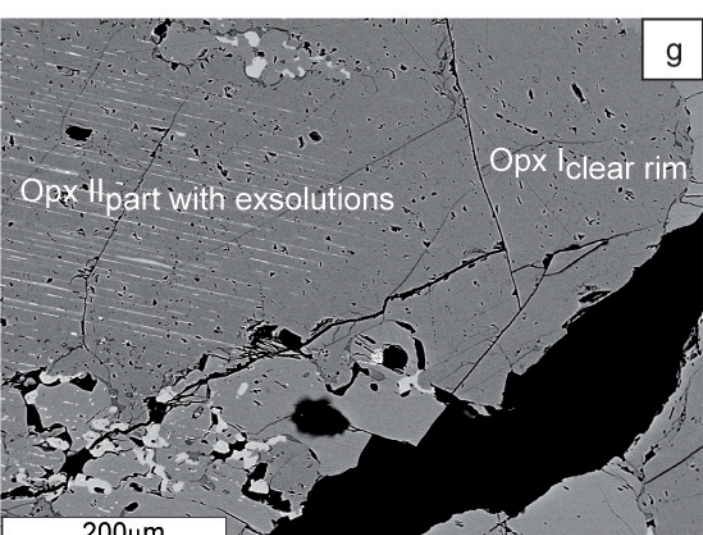
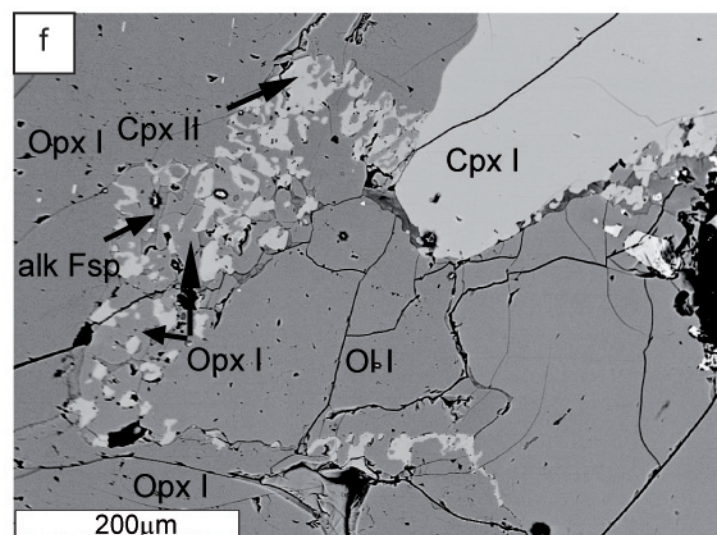
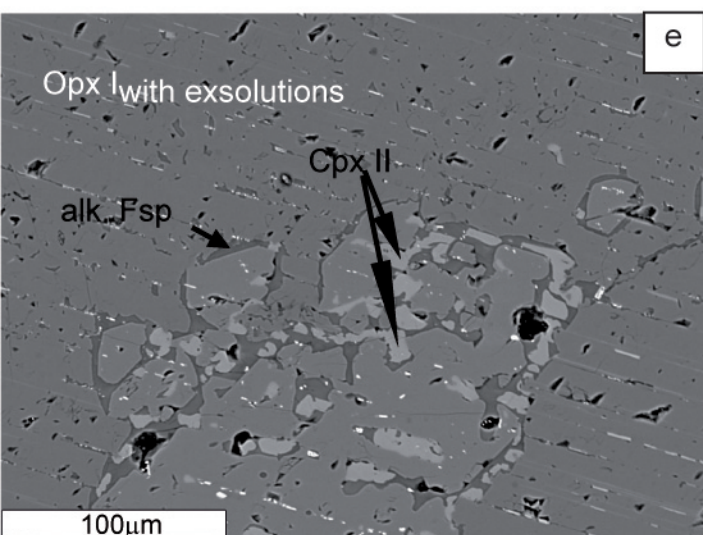
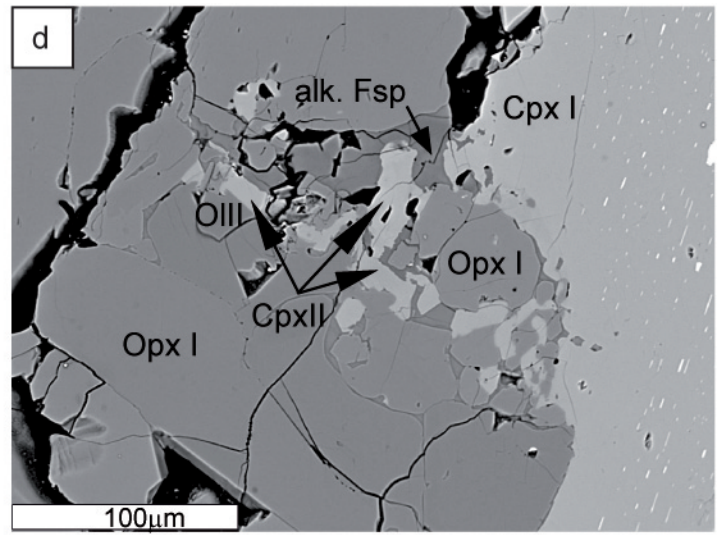
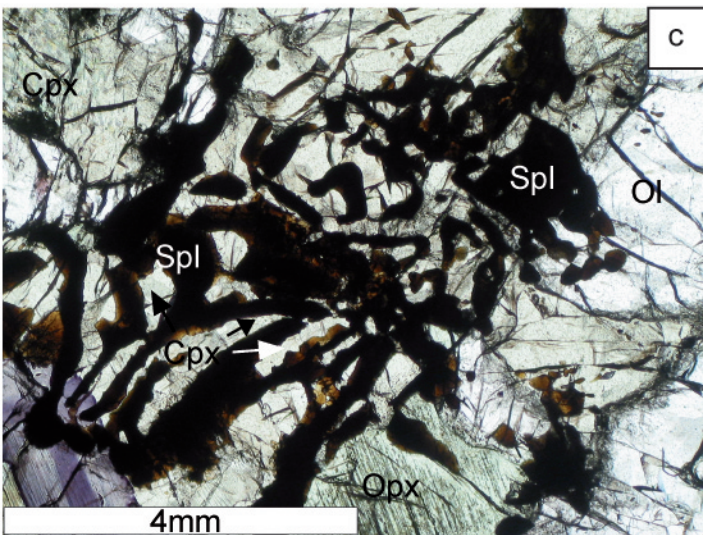
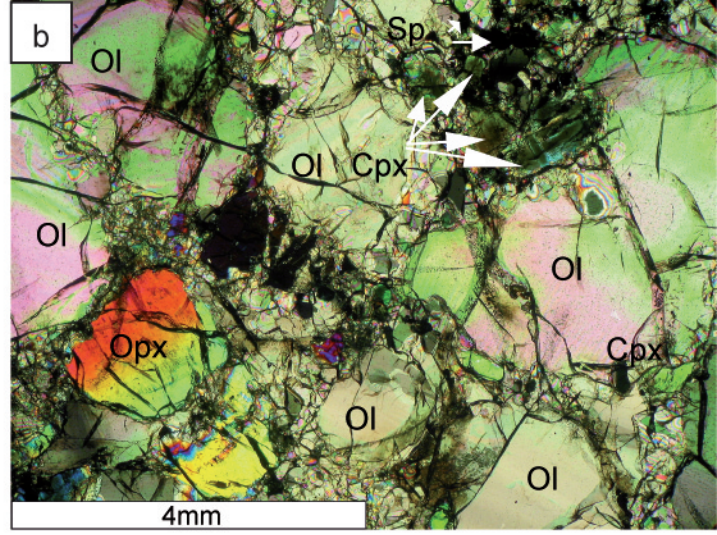
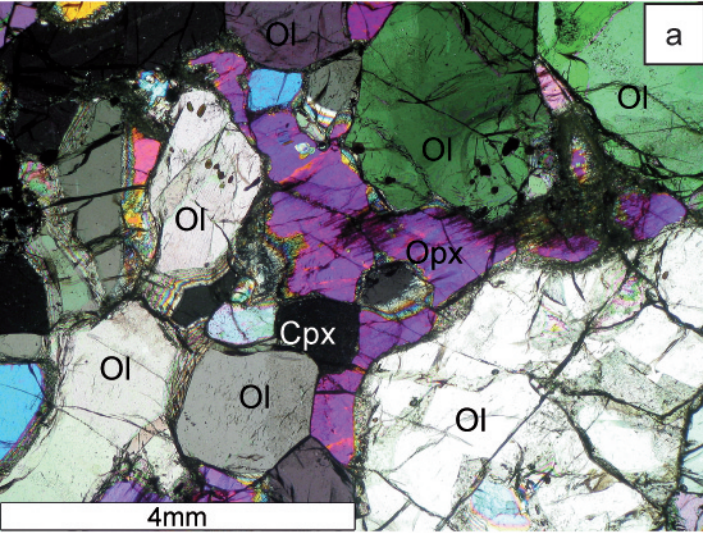


Fig.1



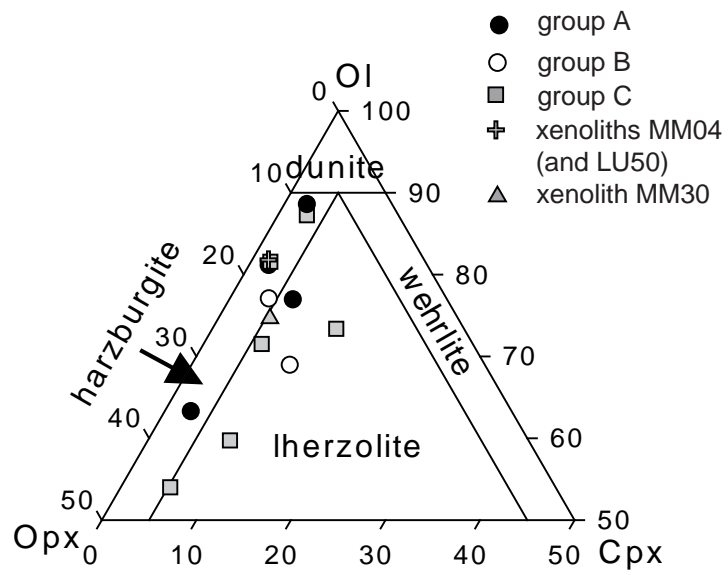


Fig.3

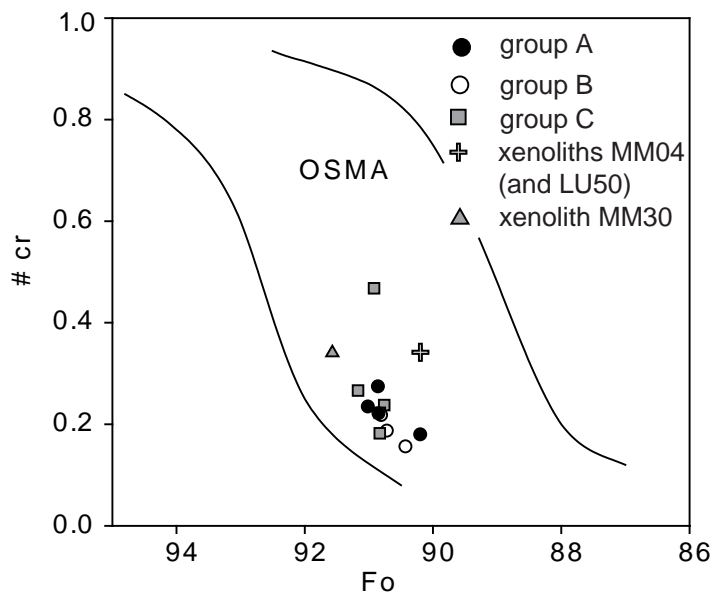


Fig.4

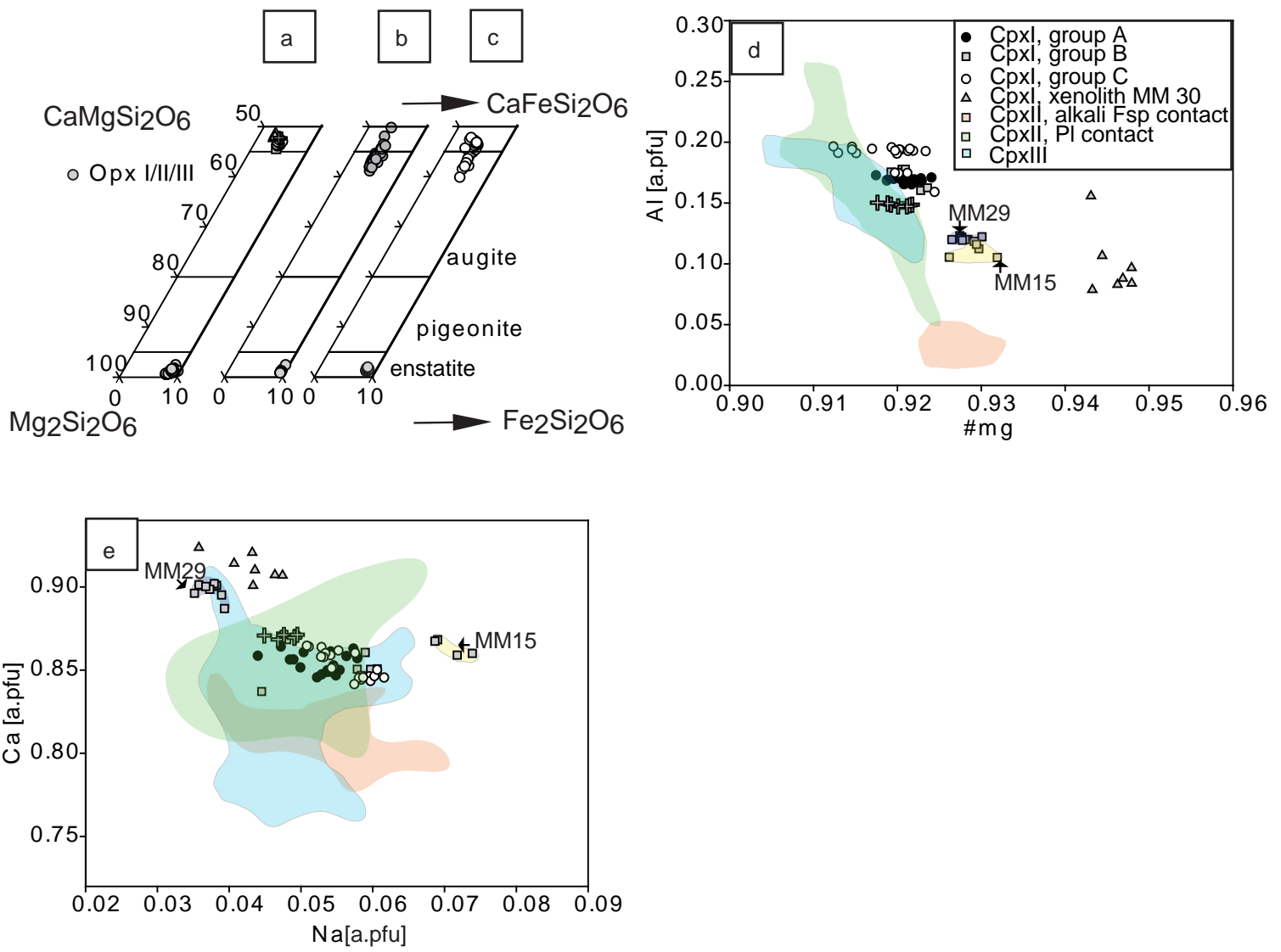


Fig.5

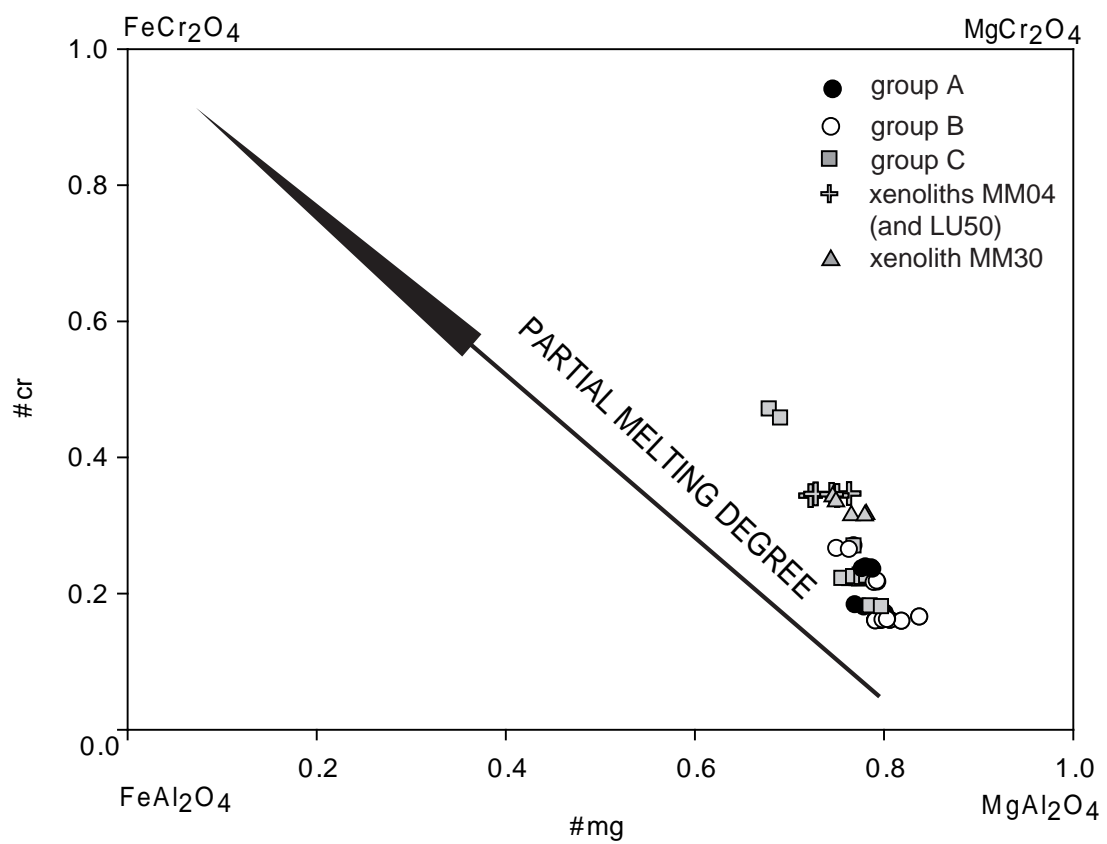


Fig.6

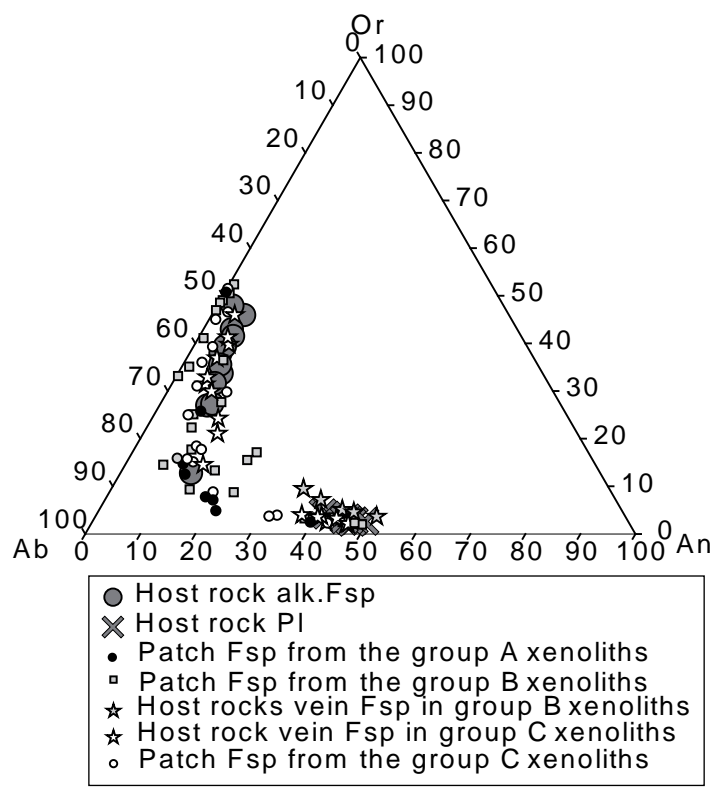
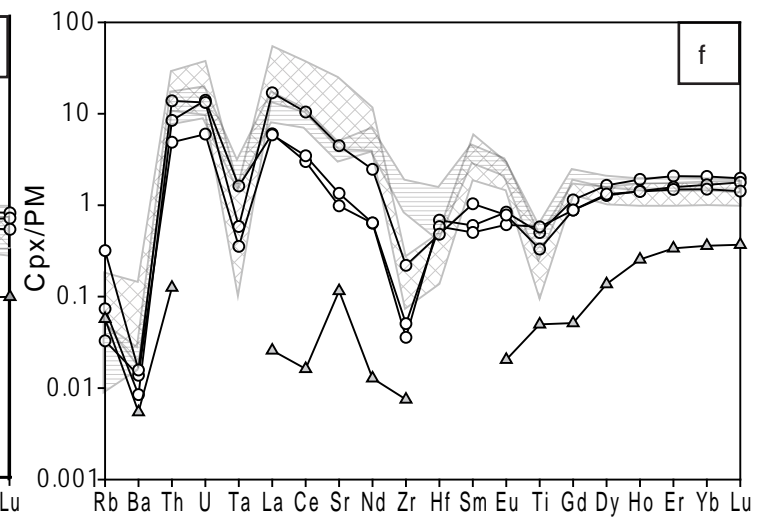
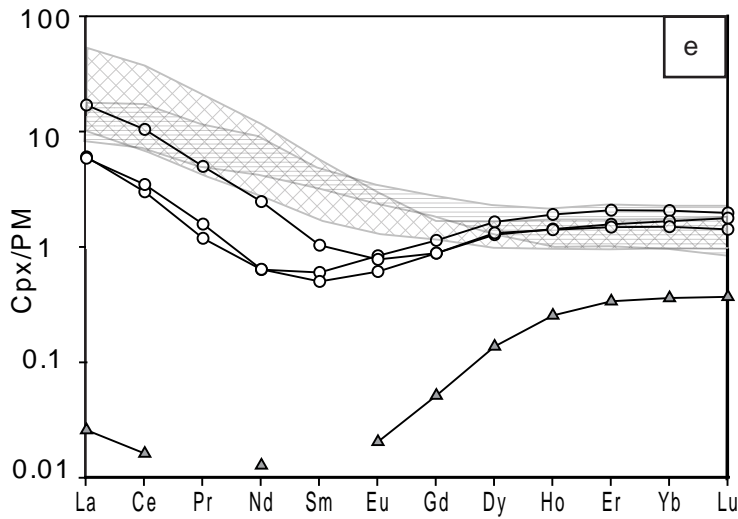
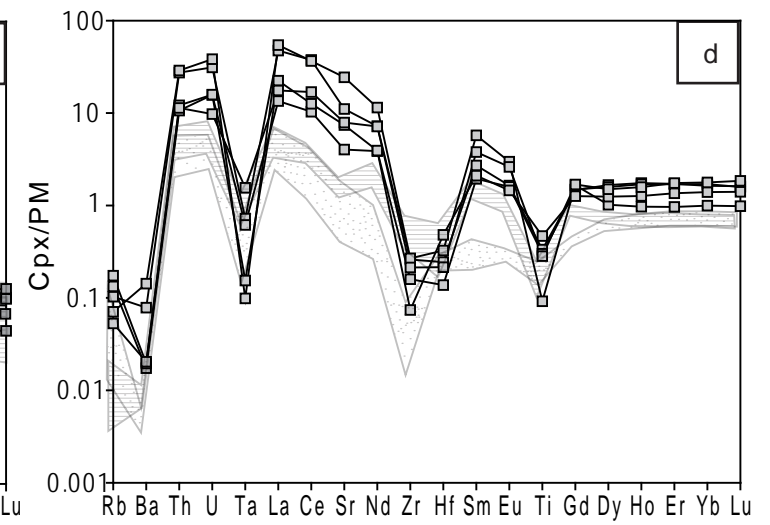
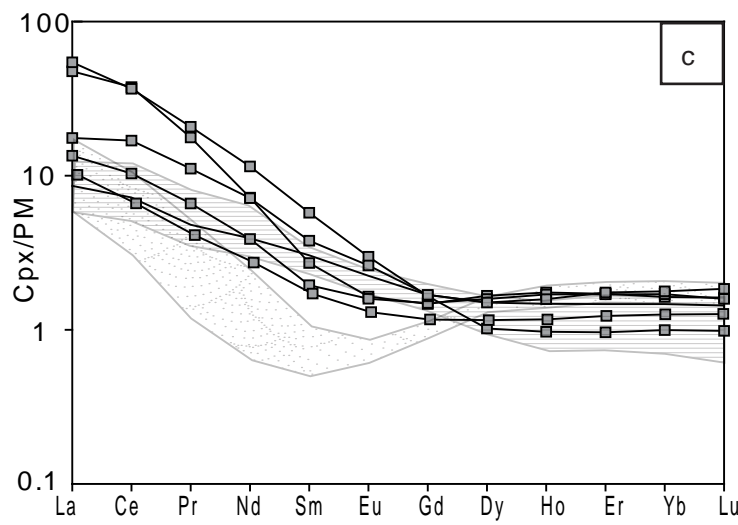
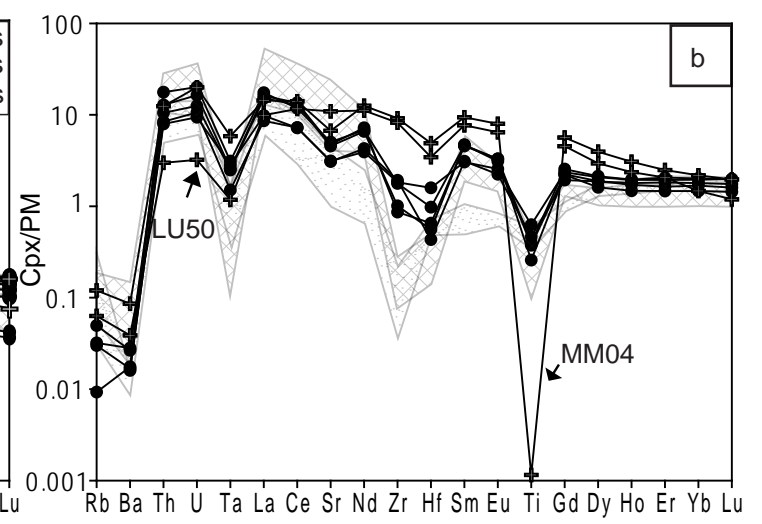
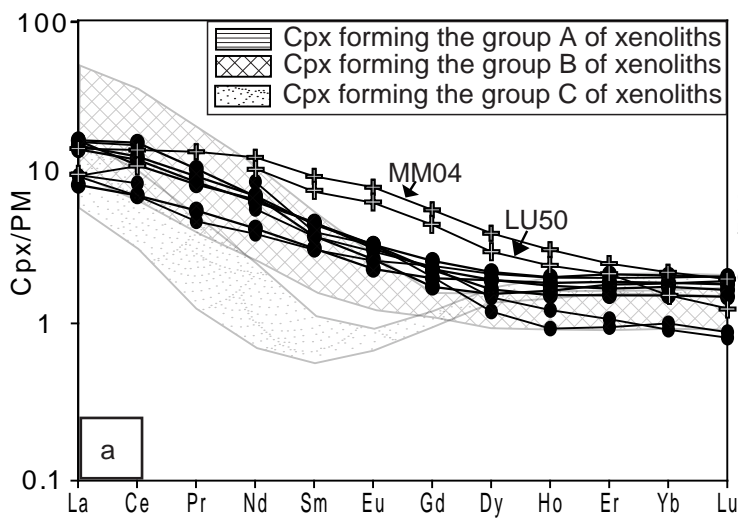


Fig.7



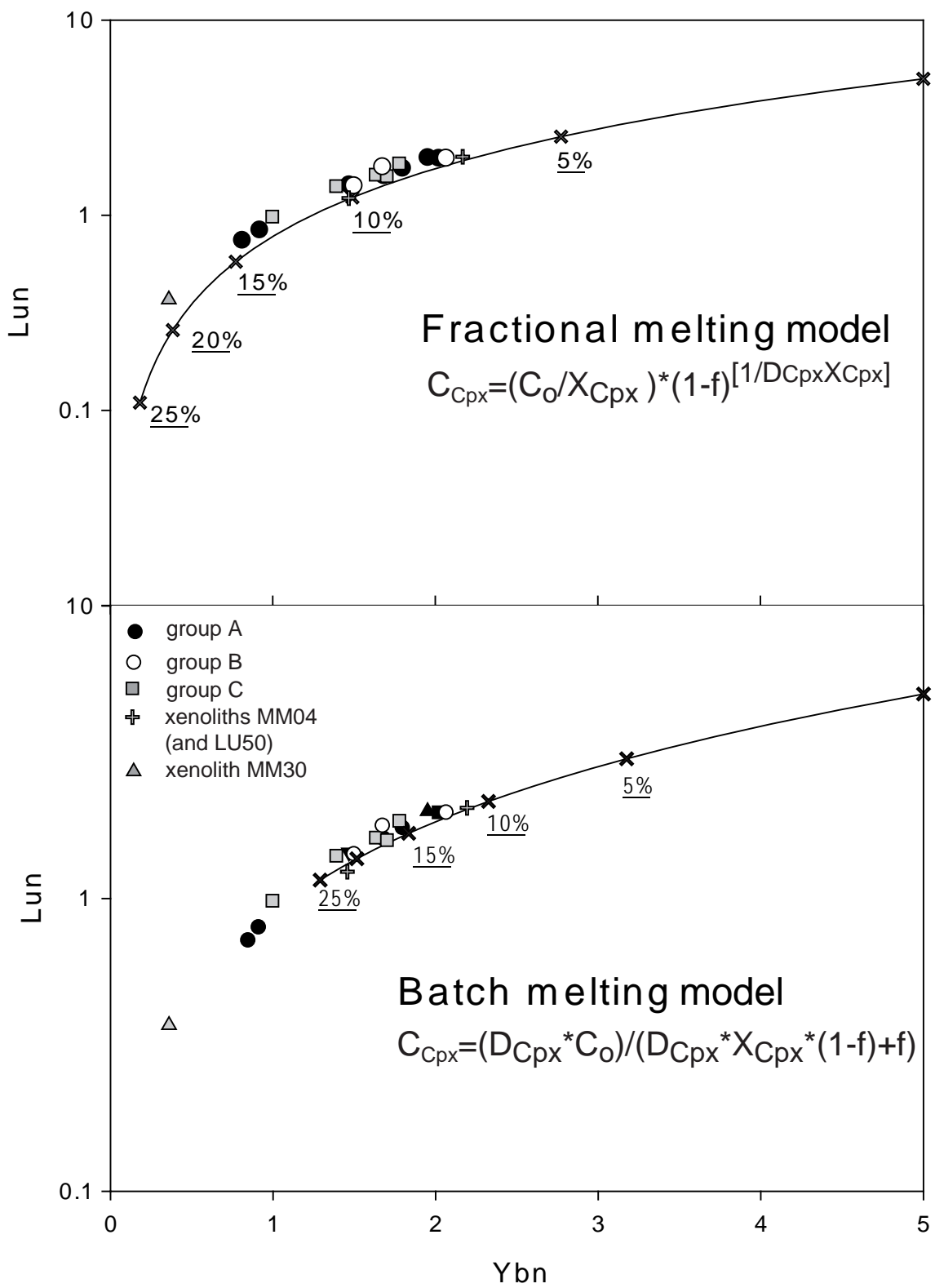


Fig.9

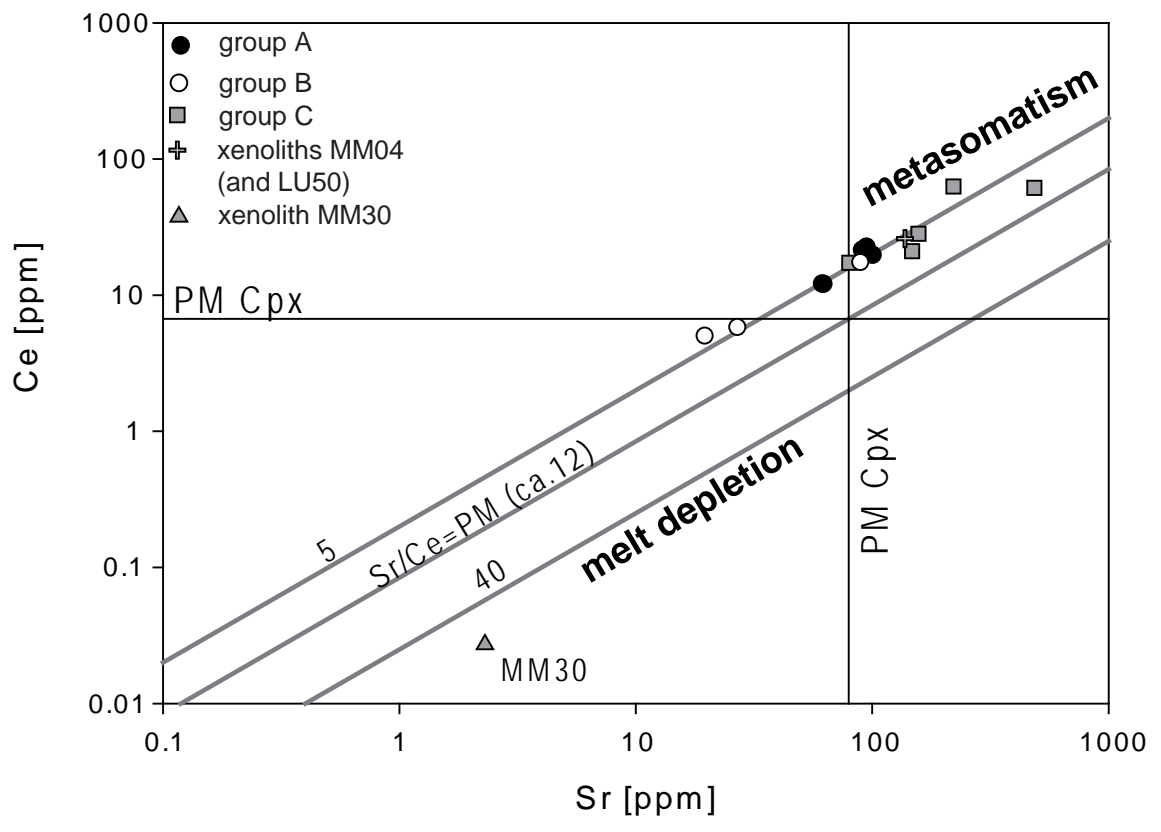
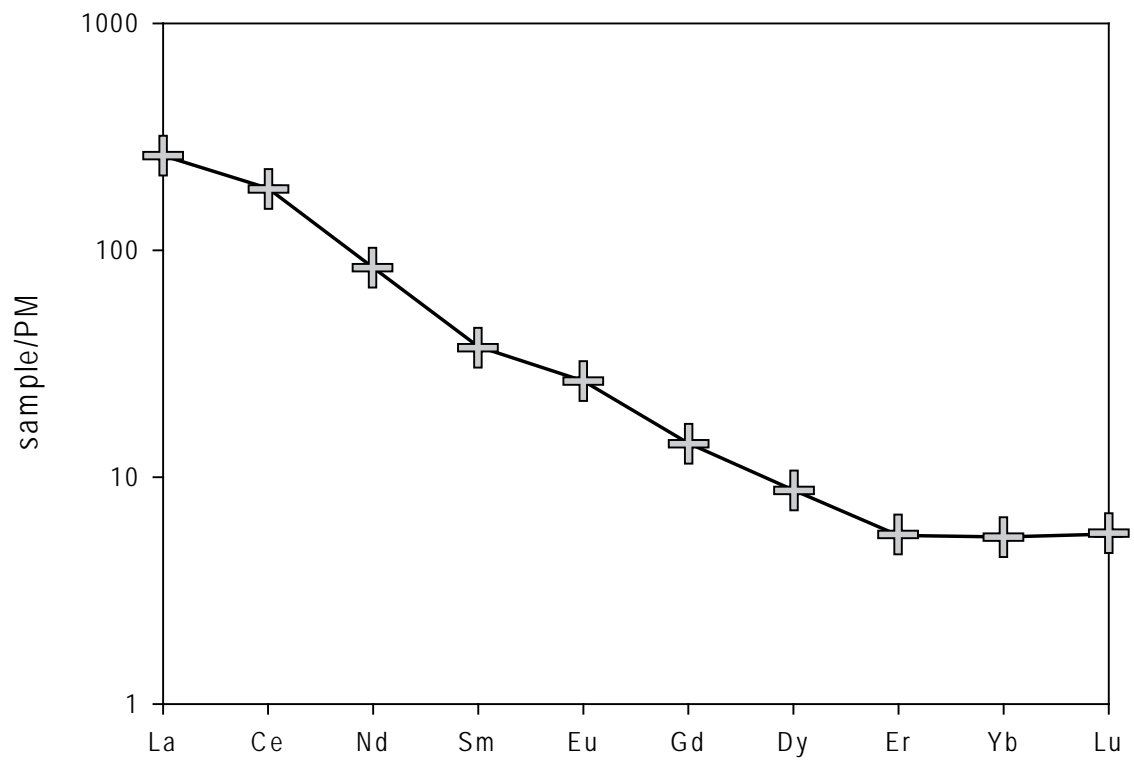


Fig.10



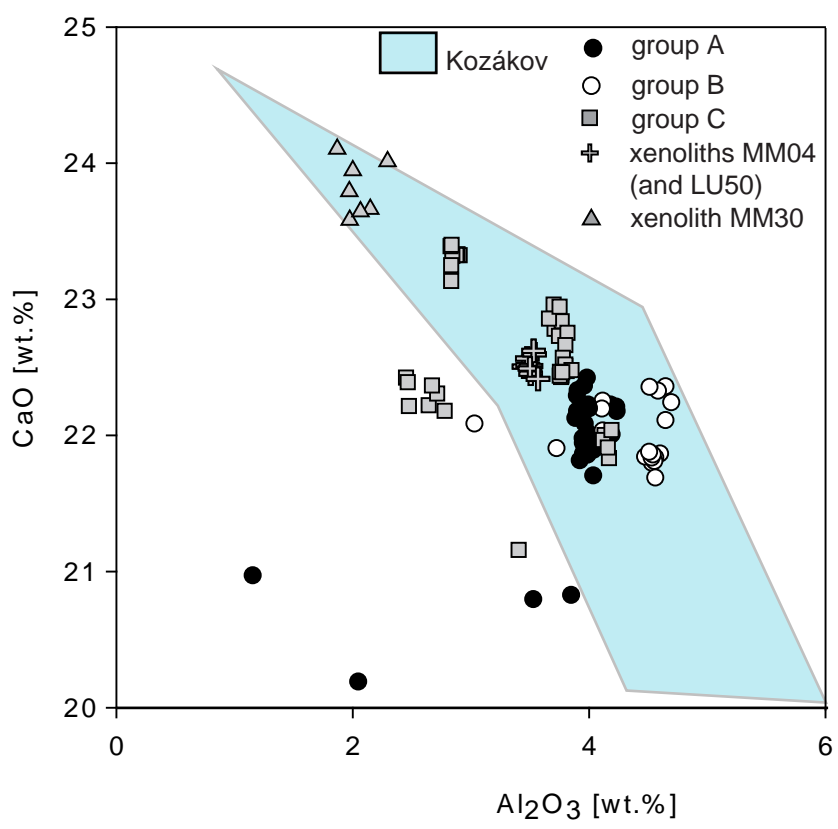


Fig.12

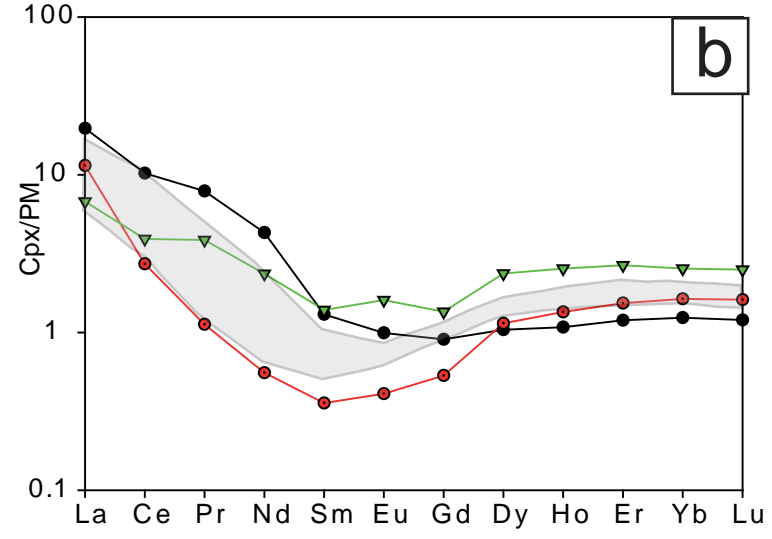
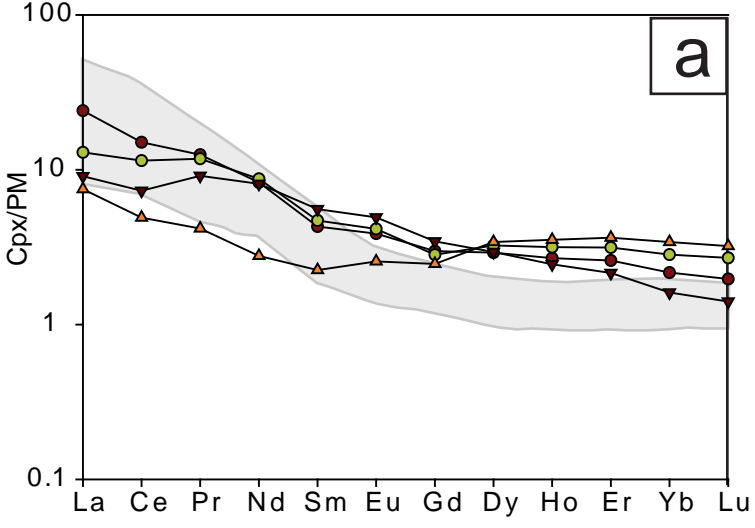


Fig.13

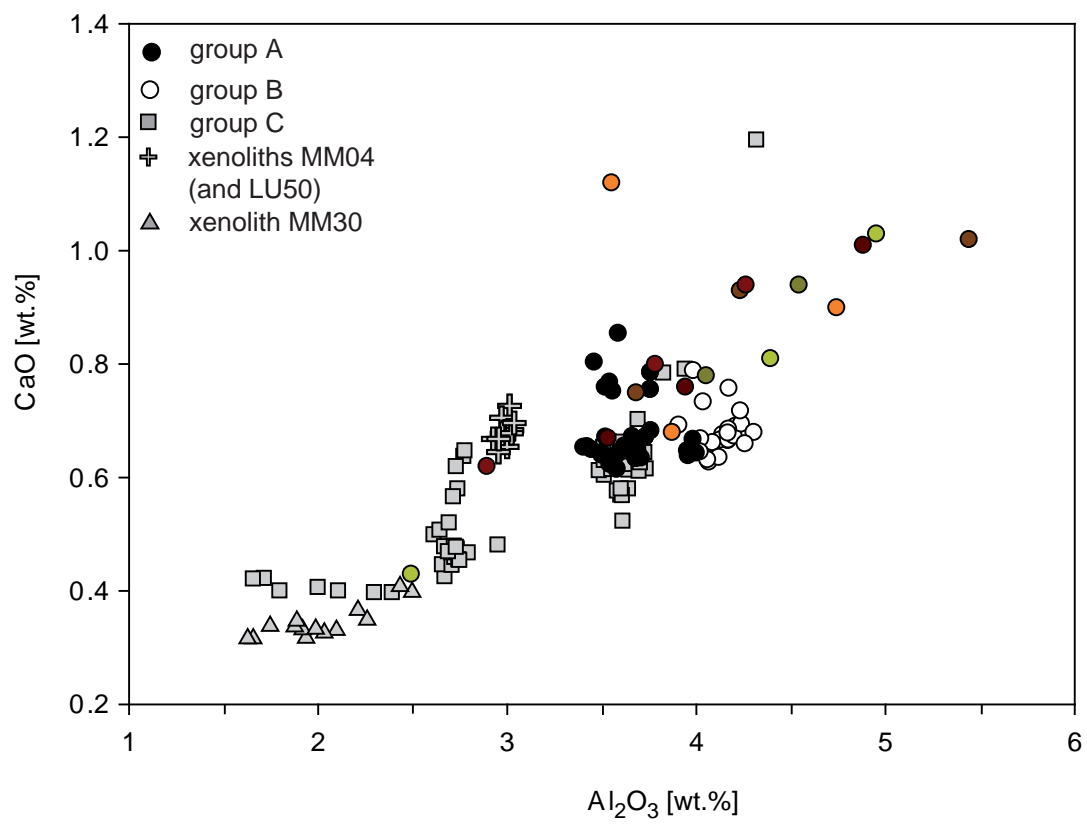


Fig.14