



**HAL**  
open science

## Role of endothelial progenitor cells in breast cancer angiogenesis: from fundamental research to clinical ramifications

Xuefen Bourhis, Rodrigue Romon, Hubert Hondermarck

► **To cite this version:**

Xuefen Bourhis, Rodrigue Romon, Hubert Hondermarck. Role of endothelial progenitor cells in breast cancer angiogenesis: from fundamental research to clinical ramifications. *Breast Cancer Research and Treatment*, 2009, 120 (1), pp.17-24. 10.1007/s10549-009-0686-5 . hal-00535425

**HAL Id: hal-00535425**

**<https://hal.science/hal-00535425>**

Submitted on 11 Nov 2010

**HAL** is a multi-disciplinary open access archive for the deposit and dissemination of scientific research documents, whether they are published or not. The documents may come from teaching and research institutions in France or abroad, or from public or private research centers.

L'archive ouverte pluridisciplinaire **HAL**, est destinée au dépôt et à la diffusion de documents scientifiques de niveau recherche, publiés ou non, émanant des établissements d'enseignement et de recherche français ou étrangers, des laboratoires publics ou privés.

# Role of endothelial progenitor cells in breast cancer angiogenesis: from fundamental research to clinical ramifications

Xuefen Le Bourhis · Rodrigue Romon ·  
Hubert Hondermarck

Received: 3 November 2009 / Accepted: 10 December 2009 / Published online: 24 December 2009  
© Springer Science+Business Media, LLC. 2009

**Abstract** Blood vessel formation (neovascularization) in tumors can occur through two mechanisms: angiogenesis and vasculogenesis. Angiogenesis results from proliferation and sprouting of existing blood vessels close to the tumor, while vasculogenesis is believed to arise from recruitment of circulating cells, largely derived from the bone marrow, and de novo clonal formation of blood vessels from these cells. Increasing evidence in animal models indicate that bone marrow-derived endothelial precursor cells (EPC) can contribute to tumor angiogenesis. This review aims to collate existing literature and provide an overview on the current knowledge of EPC involvement in breast cancer angiogenesis. We also discuss recent attempts to use EPC as biomarker and therapeutic target in clinical trials.

**Keywords** Endothelial precursor cells ·  
Tumor angiogenesis · Breast cancer · Biomarker

## Neovascularization in breast cancer

Breast cancer-induced angiogenesis is first observed at the preinvasive stage of high-grade ductal carcinoma in situ by the formation of microvessels around the ducts that are filled with proliferating epithelial cells [1]. As the tumor

progresses, so does the degree of neovascularization. The new vessels not only help to meet the growing metabolic demands of the tumor but also favor tumor dissemination and metastasis. Poor breast cancer prognosis has been shown to correlate with increased microvascular density or production of proangiogenic factors, some of which have been used as therapeutic targets [2]. However, tumor neovascularization can occur not only by angiogenesis (the sprouting of new vessels from existing vessels), but also by vasculogenesis, the embryonic process where blood vessels are formed de novo from bone marrow-derived endothelial precursor cells (EPC). In the later process, EPC is mobilized from the bone marrow, transported through the blood stream to the tumor site where they differentiate into mature endothelial cells to form vascular sprouts and cellular networks, before incorporation into a functional microvasculature (Fig. 1).

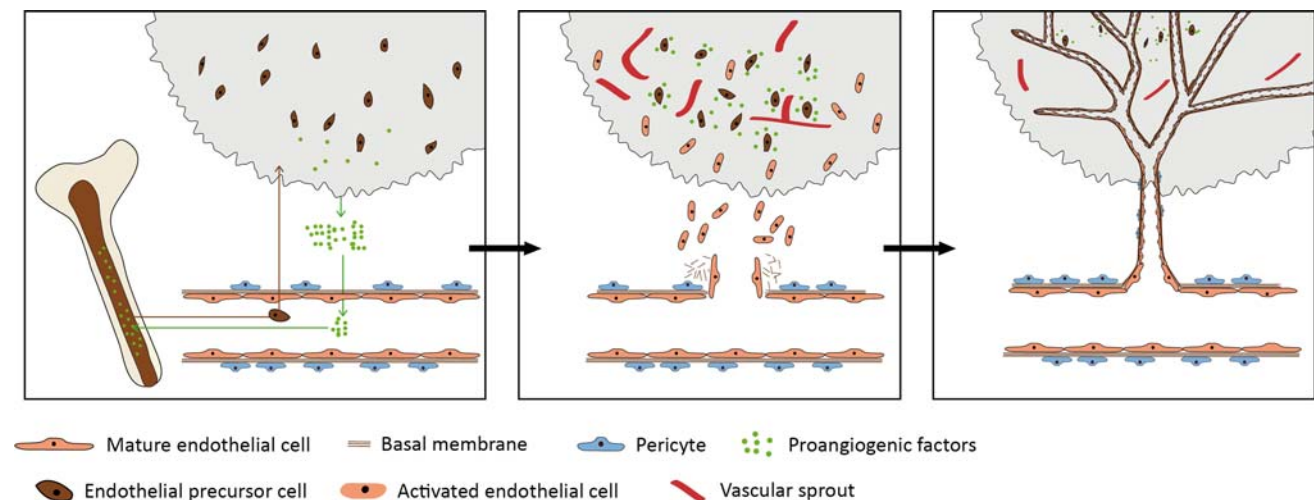
## Discovery and characterization of EPC

Endothelial precursor cells were initially identified and isolated from the blood of healthy donors in 1997 by Asahara et al. [3]. These cells were found to coexpress both the vascular endothelial growth factor receptor-2 (VEGFR2) and CD34, and to differentiate to mature endothelial cells in culture. Soon after, by using a fluorescent in situ hybridization approach in human recipients of gender-mismatched bone marrow transplants, which allowed to distinguish EPC from the marrow of donor-derived cells and circulating endothelial cells from vessel walls of host-derived cells. Lin et al. [4] found that more than 90% of endothelial cells in the blood were of host origin. When cultured in vitro, donor-derived endothelial cells expanded about 1,000-fold, whereas host-genotype endothelial cells

---

X. Le Bourhis · R. Romon · H. Hondermarck  
INSERM U908 “Growth factor signaling in breast cancer.  
Functional proteomics”, University of Lille, IFR147,  
Villeneuve d’Ascq, France

X. Le Bourhis (✉)  
INSERM U908, Bâtiment SN3, University of Lille,  
59655 Villeneuve d’Ascq, France  
e-mail: xuefen.lebourhis@univ-lille1.fr



**Fig. 1** Schematic representation of neovascularization in tumors. Under low oxygen tension or hypoxia condition, tumor cells secrete a number of proangiogenic factors which activate endothelial cells of existing vessels in neighboring areas to proliferate, migrate, leading to the formation of new vessels from existing vessels. Proangiogenic

factors can also initiate the mobilization of bone marrow-derived endothelial precursor cells to the tumor site, where they differentiate into mature endothelial cells to form vascular sprouts and cellular networks before incorporation into a functional microvasculature

expanded only about 20-fold, thus illustrating the high proliferative potential of EPC. Since then, many studies have been performed to determine the phenotypical and functional characteristics of EPC [5–8]. However, as EPC, endothelial cells and haematopoietic stem cells share many cell surface markers including CD45, CD34, CD133 (CD117 for mouse), CD146, CD31, CD105, CD144, vascular endothelial growth factor receptor 2 (VEGFR2) and von Willebrand factor (vWF) [6, 9–15] (Table 1), the term EPC may therefore encompass ranging from relative primitive haemangioblasts to more differentiated endothelial cells. As CD133 is expressed in stem cells and/or progenitors of different tissues [16], it is currently accepted that early EPC (localized in the bone marrow or

immediately after migration into the circulation) are CD133+/CD34+/VEGFR2+/CD45– cells, whereas circulating EPC are CD133low/CD34+/VEGFR2+/CD45– and begin to express cell surface markers typical to mature endothelial cells, including CD31 and vWF. The majority of circulating EPC resides in the bone marrow in close association with hematopoietic stem cells and the bone marrow stroma that provides an optimal microenvironment. Clearly, putative precursors and the exact differentiation lineage of EPC remain to be determined. Further and more detailed molecular characterization of EPC could emerge from transcriptomic and proteomic analysis, as illustrated by recent publications [17, 18]. It is also to be noted that proteomics of breast tumors might equally reveal

**Table 1** Marker profile of endothelial cell lineage, platelet, and lymphocyte

Markers	Hematopoietic stem cell	Endothelial precursor cell	Circulating endothelial cell	Mature endothelial cell	Endothelial cell microparticle	Platelet	Lymphocyte
DNA	+	+	+	+	–	–	+
CD45	+	–	–	–	–	–	+
CD34	+	+	+/-	+/-	+/-	+/-	–
CD133	+	+	–	–	–	–	–
CD117	+	+	–	–	–	–	–
CD146	–	+/-	+	+	+	–	+/-
CD31	+/-	+/-	+	+	+	+/-	–
CD105	+/-	+/-	+	+	–	–	–
CD144	+/-	+/-	+	+	+	–	–
VEGFR2	+/-	+	+	+	+	–	–
vWF	–	+/-	+	+	+	–	–

Adapted from Bertolini et al. [6]

important molecular trends related to angiogenesis and EPC intervention [19].

### Contribution of EPC to mammary tumor vascularization in animal models

The contribution of EPC to tumor vascularization has been mainly evaluated by using tumors grown in chimeric mice which were previously lethally irradiated and reconstituted with LacZ+ or GFP+ tagged bone marrow-derived cells. The first proof-of-principle of bone marrow-derived EPC contribution to cancer-associated blood vessels was reported in 2001 by Lyden et al. [20], by using an angiogenesis-defective Id-mutant mice model. The Id proteins interact with other helix–loop–helix transcription factors, thereby modulating cellular differentiation in early fetal development [21]. Adult mice with reduced Id gene dosages cannot support neo-angiogenesis when challenged with tumor [22]. Bone marrow transplantation from wild-type mice, not from Id-mutant mice, restored the tumor growth and neovascularization in Id-mutant mice [20]. These findings were later confirmed by a clinical study of cancer patients, who developed cancers after bone marrow transplantation with donor cells derived from individuals of the opposite sex [23]. By using fluorescence in situ hybridization with sex chromosome-specific probes, the authors found that the percentage of bone marrow-derived endothelial cells in the tumor vasculatures ranged from 1% to 12% according to tumor types.

An excellent demonstration of EPC as a major determinant of nascent mammary tumor neovascularization was recently reported by Nolan et al. [24]. The authors used MMTV-PyMT transgenic mice, in which the PyMT oncogene was expressed under the transcriptional control of the mouse mammary tumor virus promoter/enhancer specifically in the mammary epithelium [25]. The PyMT transgene activates pathways similar to that induced by ErbB2 [26], and importantly, this murine tumor model recapitulates human breast cancer progression from early nonmalignant hyperplasia (6 weeks of age) and adenoma (8–9 weeks of age), to early and late malignant adenocarcinoma (8–12 weeks of age) [27]. They examined the contribution of bone marrow-derived EPC and luminally incorporated endothelial cells at various stages of these mammary tumors developing in animals previously transplanted with GFP+ bone marrow. They found that early adenomas contained foci of bone marrow-derived GFP+ cells including EPC and exhibited increased vessel density, with 5–10% of host vessels having incorporated bone marrow-derived GFP+ endothelial cells. These findings indicate that bone marrow-derived EPC contribute to neovascularization in early stages of breast tumor

progression. In the same study, the authors obtained similar results using other transplanted tumors including lung carcinoma, lymphoma, and melanoma, thus highlighting the general relevance of these cells in tumor neovascularization. The contribution of EPC in mammary tumor neovascularization has also been studied using other animal models [28–31] (Table 2). In general, the percentage of EPC incorporation in neovessels is relatively low (0.5–3.5%). However, Duda et al. [29] reported that as high as 58% of tumor vessels were bone marrow-derived endothelial cells-positive when TG-1 mammary carcinoma cells were injected superficially under the pial surface of mouse brain, while only 1.5% of tumor vessels were from bone marrow-derived endothelial cells when MCA8 breast cancer cells were injected subcutaneously or at mammary fat pad, suggesting that the extent of vasculogenesis may also depend on the specific tumor-stroma/microenvironment interaction.

In addition to the physical contribution of EPC to newly formed capillaries, the angiogenic cytokine release of EPC may improve neovascularization in a paracrine manner [32]. This idea is supported by a recent report by Gao et al. [33] who found that although only 12% of the new blood vessels showed incorporation of EPC, blocking EPC mobilization caused severe angiogenesis inhibition and significantly impaired lung tumor progression. Moreover, in the same study, gene expression analysis of EPC revealed up-regulation of a variety of key proangiogenic genes including vascular endothelial growth factor, platelet-derived growth factor, fibroblast growth factor receptor 1, chemokine ligands and receptors. Similarly, Suriano et al. [31] reported that 17 $\beta$ -estradiol mobilizes bone marrow-derived EPC to orthotopically implanted mammary tumors. The homing of EPC in tumor tissues was associated with enhanced expression of several proangiogenic factors which might contribute to stimulate vessel formation and support tumor growth.

Endothelial precursor cells are not only involved in primary tumor development, but also in metastase formation. This has been recently evidenced by Gao et al. [33]. The authors transplanted syngeneic GFP+ bone marrow into MMTV-PyMT transgenic mice, which develop spontaneous mammary carcinoma and lung metastase. They found that lung metastases initially formed micrometastases which were poorly vascularized, but as the metastatic tumors grew over time (16 weeks), vessels became increasingly abundant and up to 12% of the tumor vascular endothelium contained BM-GFP+CD31+ EPC. Similar results were obtained after implantation of Lewis lung carcinoma cells into syngeneic mice reconstituted with bone marrow-derived cells expressing green fluorescent protein (BM-GFP+). Importantly, the blockade of EPC mobilization by short hairpin RNA, directed against the Id1

**Table 2** Contribution of EPC in neovessels of mammary primary tumors and metastases

Tumor model	Mice	Time point analysis after BMT	% of EPC incorporation in vessels	EC markers	References
MMTV-PyMT Spontaneous mammary carcinoma	MMTV-PyMT mice	10–12 weeks	1.3	LacZ, CD31	[28]
MCA8 breast cancer cells MMTV-PyMT Spontaneous mammary carcinoma	C57BL6 mice MMTV-PyMT mice	3 months 10 weeks	<1 5–10	GFP, CD31 CD31, GFP, CD144	[29] [24]
MT1A2 and TG1-1 mouse mammary carcinoma cells	FVB mice	>4 weeks	2.5–3.5	LacZ, CD31	[30]
TG1-1 mouse mammary carcinoma cells	Tg(TIE2GFP) 287SATO/J mice	–	0.5–3	GFP, CD133	[31]
MMTV-PyMT Spontaneous mammary carcinoma	MMTV-PyMT mice	12 weeks (lung metastases)	12	GFP, CD31	[33]

BMT Bone marrow transplantation, EC endothelial cells

gene, caused severe angiogenesis inhibition at the micro-metastatic stage and significantly impaired the formation of lethal macrometastases.

### Molecular mechanism of EPC mobilization

Although the molecular pathways involved in EPC mobilization remain to be determined, several stimuli including VEGF, stroma cell derived factor-1 $\alpha$  (SDF-1 $\alpha$ ), placental growth factor (PIGF), granulocyte colony stimulating factor (G-CSF) and estrogens were described to be involved in the mobilization of EPC from the bone marrow to tumor sites [31, 34–39]. VEGF can activate matrix metalloproteinase-9 which that cleaves the membrane-bound stem cell cytokine mKit Ligand in bone marrow stromal cells, to liberate soluble sKit Ligand, which then stimulates cKit-positive EPC to migrate from a quiescent bone marrow niche to a permissive microenvironment, activating EPC from a quiescent to a proliferative state [40]. Furthermore, VEGF has been found to upregulate SDF-1 (also known as CXCL12) and CXCR4 (the SDF-1 receptor) [41, 42]. SDF-1 $\alpha$  plays a key role in both the release and the homing process of EPC. SDF-1 $\alpha$  is present at high concentrations in the bone marrow, where it holds the stem cells within their niche. In response to different proangiogenic factors, such as VEGF, the level of SDF-1 $\alpha$  in bone marrow is decreased, leading to the egress of stem cells in the circulation. In contrast, the concentration of SDF-1 $\alpha$  within the tumor is increased in response to VEGF, and the progenitor cells are subsequently trapped in the tumor [36]. Other chemokines, including CCL2 and CCL5, were also reported to be produced by tumor cells to attract the progenitor cells from the circulation [43]. Suriano et al. [31] have reported that bone marrow-derived EPC initiate the neovascularization of TG1-1 mammary cells implanted in

the inguinal mammary gland of Tie-2 GFP transgenic mice. In this study, 17- $\beta$  estradiol supplementation of ovariectomized mice significantly enhanced EPC-induced neovascularization, which was accompanied by enhanced expression of proangiogenic paracrine factors, such as VEGF, bFGF, angiopoietin-1, angiopoietin-2, thrombospondin-1, and matrix metalloproteinases-2 and -9. Similarly, adiponectin, an adipocyte-specific secretory protein, was reported to stimulate migration and differentiation of EPC [44, 45]. Adiponectin exerts also a biphasic effect on mammary tumor angiogenesis in MMTV-PyMT mouse model, with an increase of EPC mobilization in mice developing more aggressive tumors [46]. Thus, other growth factors and cytokines produced by tumor cells and/or surrounding normal cells could be also involved in EPC mobilization. For example, brain-derived neurotrophic factor (BDNF) was described to promote revascularization of ischemic and nonischemic mouse tissues by both local recruitment of endothelial cells and systemic mobilization of hematopoietic progenitors [47]. These findings, together with the recent demonstration of the involvement of nerve growth factor (NGF) and its tyrosine kinase receptor TrkA in breast tumor growth and angiogenesis [48, 49], suggest that neurotrophins-promoted angiogenesis could also involve the mobilization of hematopoietic progenitors such as EPC. Finally, systemic hormones and/or factors which are known to regulate angiogenesis in both physiological situations [50] could also contribute to EPC mobilization.

### Clinical applications: EPC as biomarker and therapeutic target?

In light of the aforementioned results, showing the role of EPC in mammary tumor angiogenesis in animal models,

attempts have been made to determine their potential use in clinical oncology. Particularly, several investigations have been undertaken to establish whether variations exist in EPC according to breast cancer type, stage or response to therapy. Higher levels of circulating EPC were found in both preclinical breast cancer xenograft model in mice [51, 52] and in breast cancer patients [53, 54]. As shown in Table 3, 3 of 6 studies failed to show significant difference in EPC among varying stages of breast cancer [53, 55, 56]. In contrast, Richter-Ehrenstein et al. [57] found increased number of EPC in tumors of large size (over 2 cm). Naik et al. [58] showed increased number of EPC in stage 3 and 4 breast cancer patients, compared to stage 1 and 2 breast cancer patients. These conflicting results may be explained by the very limited number of patients analyzed, as well as different markers, used for enumerating EPC (Table 3). Accordingly, a recent report by Mancuso et al. [54], who used a more standardized method, with limited intrareader and interreader variability, showed more EPC in metastatic breast cancers than locally advanced ones. Interestingly, in patients with pediatric solid malignancies, including medulloblastoma, neuroblastoma, sarcoma, and lymphomas [59], the levels of circulating bone marrow-EPC were found to be significantly higher, compared to no metastatic diseases. Furthermore, higher circulating levels of EPC were also seen in patients with advanced unresectable hepatocellular carcinoma when compared to patients with resectable hepatocellular carcinoma [60]. Thus, the significantly higher levels of EPC paralleling clinical severity suggest the possible relevance of these cells in metastatic progression of tumors, and point out their potential use as biomarker and/or target in cancer therapy.

Surprisingly, Shaked et al. [38] found that treatment of tumor-bearing mice with vascular disrupting agents, which target the established but abnormal tumor vasculature, leads to an acute mobilization of EPC. These cells subsequently colonize the viable tumor rim that usually remains after such therapy, and drives “rebound revascularization” and tumor regrowth/recovery. Another study [61] showed

that chemotherapy drugs, such as taxanes administered at maximum tolerated doses, can also induce a rapid EPC mobilization. Prevention of the EPC spike by concurrent treatment with targeted antiangiogenic drugs enhanced the antitumor activity of chemotherapeutic drugs. These findings raise the possibility that therapeutic strategies aiming to reduce EPC mobilization might enhance the efficacy of certain cytotoxic anticancer therapies. Accordingly, addition of an antibody against CXCR4 to block EPC mobilization enhanced the antitumor effect of docetaxel in a murine breast cancer model [62]. In line with this, the efficacy of metronomic chemotherapy was thought to be mainly antiangiogenic [63, 64]. Metronomic chemotherapy is defined as regular administration of a chemotherapeutic drug at relatively low (nontoxic) doses, over prolonged periods, with no extended drug-free break periods [63]. Using different preclinical breast cancer models, several studies showed a strong relationship between decreased number of circulating EPC and efficiency of various metronomic chemotherapy regimens [65–68]. These studies demonstrated that EPC can be used successfully as a surrogate marker in mice for determining the optimal biological dose for various metronomic chemotherapies, thus avoiding empiricism (at least in mice), with respect to determining the optimal biological dose in metronomic chemotherapy regimens. However, clinical studies have yielded promising but still contradictory results, likely due to the choice of patients, therapeutic regime and enumeration technique of EPC. It has been reported that circulating EPC are increased in breast cancer patients receiving neoadjuvant chemotherapy [69]. In contrast, Dellapasqua et al. [70] have not observed any correlation between the number of EPC and clinical outcome in patients with advanced breast cancer receiving metronomic chemotherapy with or without Bevacizumab. Several clinical studies are currently under investigation to determine whether EPC can be used as biomarker for patient selection and for defining the optimal biological dose in metronomic chemotherapies.

**Table 3** Circulating EPC and breast cancer

Number of patients	Cancer stages	EPC definition	Result	References
46	–	CD45–/CD133+	Low EPC in healthy donors and breast cancer patients	[55]
19	1/2 vs. 3/4	CD34+/VEGFR2+/CD144+	No difference	[53]
47	1 to 4	CD34+/Flk1+	Increased EPC in tumors $\geq 2$ cm	[57]
25	1/2 vs. 3/4	CD133+/VEGFR2+	Increased EPC in stage 3/4 vs. stage 1/2	[58]
160	1 to 3/4	CD45–/CD133+/CD34+	No correlation with disease stage	[56]
56	Locally advanced and metastatic breast cancer	DNA+/syto16+/CD31+/CD133+	Increased EPC in metastatic breast cancer	[54]

## Conclusion and perspectives

Most recent findings point out the relevance of EPC in tumor progression. Therefore, these cells might serve both as surrogate marker for cancer progression or response to therapy and as target for therapy. Further studies and consensus are required concerning the phenotype and enumeration of these cells, to better define their exact role in clinical oncology. Furthermore, many questions related to EPC biology and functional impact remain to be answered. For instance, what is the exact lineage of EPC in the context of the hematopoietic system in the adult? Can reliable culture and expansion methods be developed to address the origin and functional definition of EPC? To what extent do EPC contribute to neovessel formation and/or vessel maintenance? These issues will be the important subjects of future investigation to dissect out the critical players promoting tumor angiogenesis.

**Acknowledgments** The work performed in our laboratory is financed by the “Institut National de la Recherche Médicale (INSERM)”, the “Ligue Nationale Contre le Cancer (Equipe labellisée 2009)”, the “Ministère de la Recherche et de l’Education Nationale”.

## References

- Engels K, Fox SB, Whitehouse RM, Gatter KC, Harris AL (1997) Distinct angiogenic patterns are associated with high-grade in situ ductal carcinomas of the breast. *J Pathol* 181:207–212
- Fayette J, Soria JC, Armand JP (2005) Use of angiogenesis inhibitors in tumour treatment. *Eur J Cancer* 41:1109–1116
- Asahara T, Murohara T, Sullivan A, Silver M, van der Zee R, Li T, Witztzenbichler B, Schatteman G, Isner JM (1997) Isolation of putative progenitor endothelial cells for angiogenesis. *Science* 275:964–967
- Lin Y, Weisdorf DJ, Solovey A, Hebbel RP (2000) Origins of circulating endothelial cells and endothelial outgrowth from blood. *J Clin Invest* 105:71–77
- Ribatti D (2004) The involvement of endothelial progenitor cells in tumor angiogenesis. *J Cell Mol Med* 8:294–300
- Bertolini F, Shaked Y, Mancuso P, Kerbel RS (2006) The multifaceted circulating endothelial cell in cancer: towards marker and target identification. *Nat Rev Cancer* 6:835–845
- Mancuso P, Colleoni M, Calleri A, Orlando L, Maisonneuve P, Pruneri G, Agliano A, Goldhirsch A, Shaked Y, Kerbel RS, Bertolini F (2006) Circulating endothelial-cell kinetics and viability predict survival in breast cancer patients receiving metronomic chemotherapy. *Blood* 108:452–459
- Bertolini F, Mancuso P, Braidotti P, Shaked Y, Kerbel RS (2009) The multiple personality disorder phenotype(s) of circulating endothelial cells in cancer. *Biochim Biophys Acta* 1796:27–32
- Shi Q, Rafii S, Wu MH, Wijelath ES, Yu C, Ishida A, Fujita Y, Kothari S, Mohle R, Sauvage LR, Moore MA, Storb RF, Hammond WP (1998) Evidence for circulating bone marrow-derived endothelial cells. *Blood* 92:362–367
- Gehling UM, Ergun S, Schumacher U, Wagener C, Pantel K, Otte M, Schuch G, Schafhausen P, Mende T, Kilic N, Kluge K, Schafer B, Hossfeld DK, Fiedler W (2000) In vitro differentiation of endothelial cells from AC133-positive progenitor cells. *Blood* 95:3106–3112
- Peichev M, Naiyer AJ, Pereira D, Zhu Z, Lane WJ, Williams M, Oz MC, Hicklin DJ, Witte L, Moore MA, Rafii S (2000) Expression of VEGFR-2 and AC133 by circulating human CD34(+) cells identifies a population of functional endothelial precursors. *Blood* 95:952–958
- Monestiroli S, Mancuso P, Burlini A, Pruneri G, Dell’Agnola C, Gobbi A, Martinelli G, Bertolini F (2001) Kinetics and viability of circulating endothelial cells as surrogate angiogenesis marker in an animal model of human lymphoma. *Cancer Res* 61:4341–4344
- Capillo M, Mancuso P, Gobbi A, Monestiroli S, Pruneri G, Dell’Agnola C, Martinelli G, Shultz L, Bertolini F (2003) Continuous infusion of endostatin inhibits differentiation, mobilization, and clonogenic potential of endothelial cell progenitors. *Clin Cancer Res* 9:377–382
- Woywodt A, Blann AD, Kirsch T, Erdbruegger U, Banzet N, Haubitz M, Dignat-George F (2006) Isolation and enumeration of circulating endothelial cells by immunomagnetic isolation: proposal of a definition and a consensus protocol. *J Thromb Haemost* 4:671–677
- Widemann A, Sabatier F, Arnaud L, Bonello L, Al-Massarani G, Paganelli F, Poncelet P, Dignat-George F (2008) CD146-based immunomagnetic enrichment followed by multiparameter flow cytometry: a new approach to counting circulating endothelial cells. *J Thromb Haemost* 6:869–876
- Mizrak D, Brittan M, Alison MR (2008) CD133: molecule of the moment. *J Pathol* 214:3–9
- Williamson AJ, Smith DL, Blinco D, Unwin RD, Pearson S, Wilson C, Miller C, Lancashire L, Lacaud G, Kouskoff V, Whetton AD (2008) Quantitative proteomics analysis demonstrates post-transcriptional regulation of embryonic stem cell differentiation to hematopoiesis. *Mol Cell Proteomics* 7:459–472
- Pula G, Mayr U, Evans C, Prokopi M, Vara DS, Yin X, Astrolakakis Z, Xiao Q, Hill J, Xu Q, Mayr M (2009) Proteomics identifies thymidine phosphorylase as a key regulator of the angiogenic potential of colony-forming units and endothelial progenitor cell cultures. *Circ Res* 104:32–40
- Hondermarck H, Tastet C, El Yazidi-Belkoura I, Toillon RA, Le Bourhis X (2008) Proteomics of breast cancer: the quest for markers and therapeutic targets. *J Proteome Res* 7:1403–1411
- Lyden D, Hattori K, Dias S, Costa C, Blaikie P, Butros L, Chadburn A, Heissig B, Marks W, Witte L, Wu Y, Hicklin D, Zhu Z, Hackett NR, Crystal RG, Moore MA, Hajar KA, Manova K, Benezra R, Rafii S (2001) Impaired recruitment of bone-marrow-derived endothelial and hematopoietic precursor cells blocks tumor angiogenesis and growth. *Nat Med* 7:1194–1201
- Norton JD, Deed RW, Craggs G, Sablitzky F (1998) Id helix-loop-helix proteins in cell growth and differentiation. *Trends Cell Biol* 8:58–65
- Lyden D, Young AZ, Zagzag D, Yan W, Gerald W, O’Reilly R, Bader BL, Hynes RO, Zhuang Y, Manova K, Benezra R (1999) Id1 and Id3 are required for neurogenesis, angiogenesis and vascularization of tumour xenografts. *Nature* 401:670–677
- Peters BA, Diaz LA, Polyak K, Meszler L, Romans K, Guinan EC, Antin JH, Myerson D, Hamilton SR, Vogelstein B, Kinzler KW, Lengauer C (2005) Contribution of bone marrow-derived endothelial cells to human tumor vasculature. *Nat Med* 11:261–262
- Nolan DJ, Ciarrocchi A, Mellick AS, Jaggi JS, Bambino K, Gupta S, Heikamp E, McDevitt MR, Scheinberg DA, Benezra R, Mittal V (2007) Bone marrow-derived endothelial progenitor cells are a major determinant of nascent tumor neovascularization. *Genes Dev* 21:1546–1558
- Guy CT, Cardiff RD, Muller WJ (1992) Induction of mammary tumors by expression of polyomavirus middle T oncogene: a transgenic mouse model for metastatic disease. *Mol Cell Biol* 12:954–961

26. Desai KV, Xiao N, Wang W, Gangi L, Greene J, Powell JJ, Dickson R, Furth P, Hunter K, Kucherlapati R, Simon R, Liu ET, Green JE (2002) Initiating oncogenic event determines gene-expression patterns of human breast cancer models. *Proc Natl Acad Sci USA* 99:6967–6972
27. Lin EY, Jones JG, Li P, Zhu L, Whitney KD, Muller WJ, Pollard JW (2003) Progression to malignancy in the polyoma middle T oncoprotein mouse breast cancer model provides a reliable model for human diseases. *Am J Pathol* 163:2113–2126
28. Dwenger A, Rosenthal F, Machein M, Waller C, Spyridonidis A (2004) Transplanted bone marrow cells preferentially home to the vessels of in situ generated murine tumors rather than of normal organs. *Stem Cells* 22:86–92
29. Duda DG, Cohen KS, Kozin SV, Perentes JY, Fukumura D, Scadden DT, Jain RK (2006) Evidence for incorporation of bone marrow-derived endothelial cells into perfused blood vessels in tumors. *Blood* 107:2774–2776
30. Ahn GO, Brown JM (2008) Matrix metalloproteinase-9 is required for tumor vasculogenesis but not for angiogenesis: role of bone marrow-derived myelomonocytic cells. *Cancer Cell* 13:193–205
31. Suriano R, Chaudhuri D, Johnson RS, Lambers E, Ashok BT, Kishore R, Tiwari RK (2008) 17Beta-estradiol mobilizes bone marrow-derived endothelial progenitor cells to tumors. *Cancer Res* 68:6038–6042
32. Urbich C, Aicher A, Heeschen C, Dernbach E, Hofmann WK, Zeiher AM, Dimmeler S (2005) Soluble factors released by endothelial progenitor cells promote migration of endothelial cells and cardiac resident progenitor cells. *J Mol Cell Cardiol* 39:733–742
33. Gao D, Nolan DJ, Mellick AS, Bambino K, McDonnell K, Mittal V (2008) Endothelial progenitor cells control the angiogenic switch in mouse lung metastasis. *Science* 319:195–198
34. Asahara T, Takahashi T, Masuda H, Kalka C, Chen D, Iwaguro H, Inai Y, Silver M, Isner JM (1999) VEGF contributes to postnatal neovascularization by mobilizing bone marrow-derived endothelial progenitor cells. *EMBO J* 18:3964–3972
35. Petit I, Szyper-Kravitz M, Nagler A, Lahav M, Peled A, Habler L, Ponomaryov T, Taichman RS, Arenzana-Seisdedos F, Fujii N, Sandbank J, Zipori D, Lapidot T (2002) G-CSF induces stem cell mobilization by decreasing bone marrow SDF-1 and up-regulating CXCR4. *Nat Immunol* 3:687–694
36. Grunewald M, Avraham I, Dor Y, Bachar-Lustig E, Itin A, Jung S, Chimenti S, Landsman L, Abramovitch R, Keshet E (2006) VEGF-induced adult neovascularization: recruitment, retention, and role of accessory cells. *Cell* 124:175–189
37. Li B, Sharpe EE, Maupin AB, Teleron AA, Pyle AL, Carmeliet P, Young PP (2006) VEGF and PlGF promote adult vasculogenesis by enhancing EPC recruitment and vessel formation at the site of tumor neovascularization. *FASEB J* 20:1495–1497
38. Shaked Y, Ciarrocchi A, Franco M, Lee CR, Man S, Cheung AM, Hicklin DJ, Chaplin D, Foster FS, Benezra R, Kerbel RS (2006) Therapy-induced acute recruitment of circulating endothelial progenitor cells to tumors. *Science* 313:1785–1787
39. Du R, Lu KV, Petritsch C, Liu P, Ganss R, Passegue E, Song H, Vandenberg S, Johnson RS, Werb Z, Bergers G (2008) HIF1 $\alpha$  induces the recruitment of bone marrow-derived vascular modulatory cells to regulate tumor angiogenesis and invasion. *Cancer Cell* 13:206–220
40. Heissig B, Werb Z, Rafii S, Hattori K (2003) Role of c-kit/Kit ligand signaling in regulating vasculogenesis. *Thromb Haemost* 90:570–576
41. Kryczek I, Lange A, Mottram P, Alvarez X, Cheng P, Hogan M, Moons L, Wei S, Zou L, Machelon V, Emilie D, Terrassa M, Lackner A, Curiel TJ, Carmeliet P, Zou W (2005) CXCL12 and vascular endothelial growth factor synergistically induce neoangiogenesis in human ovarian cancers. *Cancer Res* 65:465–472
42. Schatteman GC, Dunnwald M, Jiao C (2007) Biology of bone marrow-derived endothelial cell precursors. *Am J Physiol Heart Circ Physiol* 292:H1–H18
43. Spring H, Schuler T, Arnold B, Hammerling GJ, Ganss R (2005) Chemokines direct endothelial progenitors into tumor neovessels. *Proc Natl Acad Sci USA* 102:18111–18116
44. Shibata R, Skurk C, Ouchi N, Galasso G, Kondo K, Ohashi T, Shimano M, Kihara S, Murohara T, Walsh K (2008) Adiponectin promotes endothelial progenitor cell number and function. *FEBS Lett* 582:1607–1612
45. Nakamura N, Naruse K, Matsuki T, Hamada Y, Nakashima E, Kamiya H, Matsubara T, Enomoto A, Takahashi M, Oiso Y, Nakamura J (2009) Adiponectin promotes migration activities of endothelial progenitor cells via Cdc42/Rac1. *FEBS Lett* 583:2457–2463
46. Landskroner-Eiger S, Qian B, Muise ES, Nawrocki AR, Berger JP, Fine EJ, Koba W, Deng Y, Pollard JW, Scherer PE (2009) Proangiogenic contribution of adiponectin toward mammary tumor growth in vivo. *Clin Cancer Res* 15:3265–3276
47. Kermani P, Rafii D, Jin DK, Whitlock P, Schaffer W, Chiang A, Vincent L, Friedrich M, Shido K, Hackett NR, Crystal RG, Rafii S, Hempstead BL (2005) Neurotrophins promote revascularization by local recruitment of TrkB+ endothelial cells and systemic mobilization of hematopoietic progenitors. *J Clin Invest* 115:653–663
48. Adriaenssens E, Vanhecke E, Saule P, Mougel A, Page A, Romon R, Nurcombe V, Le Bourhis X, Hondermarck H (2008) Nerve growth factor is a potential therapeutic target in breast cancer. *Cancer Res* 68:346–351
49. Lagadec C, Meignan S, Adriaenssens E, Foveau B, Vanhecke E, Romon R, Toillon RA, Oxombre B, Hondermarck H, Le Bourhis X (2009) TrkA overexpression enhances growth and metastasis of breast cancer cells. *Oncogene* 28:1960–1970
50. Clapp C, Thebault S, Jeziorski MC, Martinez De La Escalera G (2009) Peptide hormone regulation of angiogenesis. *Physiol Rev* 89:1177–1215
51. Shirakawa K, Furuhashi S, Watanabe I, Hayase H, Shimizu A, Ikarashi Y, Yoshida T, Terada M, Hashimoto D, Wakasugi H (2002) Induction of vasculogenesis in breast cancer models. *Br J Cancer* 87:1454–1461
52. Shaked Y, Bertolini F, Man S, Rogers MS, Cervi D, Foutz T, Rawn K, Voskas D, Dumont DJ, Ben-David Y, Lawler J, Henkin J, Huber J, Hicklin DJ, D'Amato RJ, Kerbel RS (2005) Genetic heterogeneity of the vasculogenic phenotype parallels angiogenesis; implications for cellular surrogate marker analysis of antiangiogenesis. *Cancer Cell* 7:101–111
53. Kim HK, Song KS, Kim HO, Chung JH, Lee KR, Lee YJ, Lee DH, Lee ES, Ryu KW, Bae JM (2003) Circulating numbers of endothelial progenitor cells in patients with gastric and breast cancer. *Cancer Lett* 198:83–88
54. Mancuso P, Antoniotti P, Quarna J, Calleri A, Rabascio C, Tacchetti C, Braidotti P, Wu HK, Zurita AJ, Saronni L, Cheng JB, Shalinsky DR, Heymach JV, Bertolini F (2009) Validation of a standardized method for enumerating circulating endothelial cells and progenitors: flow cytometry and molecular and ultrastructural analyses. *Clin Cancer Res* 15:267–273
55. Mancuso P, Burlini A, Prunerì G, Goldhirsch A, Martinelli G, Bertolini F (2001) Resting and activated endothelial cells are increased in the peripheral blood of cancer patients. *Blood* 97:3658–3661
56. Goon PK, Lip GY, Stonelake PS, Blann AD (2009) Circulating endothelial cells and circulating progenitor cells in breast cancer: relationship to endothelial damage/dysfunction/apoptosis, clinicopathologic factors, and the Nottingham Prognostic Index. *Neoplasia* 11:771–779



57. Richter-Ehrenstein C, Rentzsch J, Runkel S, Schneider A, Schonfelder G (2007) Endothelial progenitor cells in breast cancer patients. *Breast Cancer Res Treat* 106:343–349
58. Naik RP, Jin D, Chuang E, Gold EG, Tousimis EA, Moore AL, Christos PJ, de Dalmas T, Donovan D, Rafii S, Vahdat LT (2008) Circulating endothelial progenitor cells correlate to stage in patients with invasive breast cancer. *Breast Cancer Res Treat* 107: 133–138
59. Taylor M, Rossler J, Geoerger B, Laplanche A, Hartmann O, Vassal G, Farace F (2009) High levels of circulating VEGFR2+ Bone marrow-derived progenitor cells correlate with metastatic disease in patients with pediatric solid malignancies. *Clin Cancer Res* 15:4561–4571
60. Ho JW, Pang RW, Lau C, Sun CK, Yu WC, Fan ST, Poon RT (2006) Significance of circulating endothelial progenitor cells in hepatocellular carcinoma. *Hepatology* 44:836–843
61. Shaked Y, Henke E, Roodhart JM, Mancuso P, Langenberg MH, Colleoni M, Daenen LG, Man S, Xu P, Emmenegger U, Tang T, Zhu Z, Witte L, Strieter RM, Bertolini F, Voest EE, Benezra R, Kerbel RS (2008) Rapid chemotherapy-induced acute endothelial progenitor cell mobilization: implications for antiangiogenic drugs as chemosensitizing agents. *Cancer Cell* 14:263–273
62. Hassan S, Ferrario C, Saragovi U, Quenneville L, Gaboury L, Baccarelli A, Salvucci O, Basik M (2009) The influence of tumor-host interactions in the stromal cell-derived factor-1/CXCR4 ligand/receptor axis in determining metastatic risk in breast cancer. *Am J Pathol* 175:66–73
63. Kerbel RS, Kamen BA (2004) The anti-angiogenic basis of metronomic chemotherapy. *Nat Rev Cancer* 4:423–436
64. Emmenegger U, Man S, Shaked Y, Francia G, Wong JW, Hicklin DJ, Kerbel RS (2004) A comparative analysis of low-dose metronomic cyclophosphamide reveals absent or low-grade toxicity on tissues highly sensitive to the toxic effects of maximum tolerated dose regimens. *Cancer Res* 64:3994–4000
65. Shaked Y, Emmenegger U, Man S, Cervi D, Bertolini F, Ben-David Y, Kerbel RS (2005) Optimal biologic dose of metronomic chemotherapy regimens is associated with maximum antiangiogenic activity. *Blood* 106:3058–3061
66. Shaked Y, Emmenegger U, Francia G, Chen L, Lee CR, Man S, Paraghamian A, Ben-David Y, Kerbel RS (2005) Low-dose metronomic combined with intermittent bolus-dose cyclophosphamide is an effective long-term chemotherapy treatment strategy. *Cancer Res* 65:7045–7051
67. Munoz R, Man S, Shaked Y, Lee CR, Wong J, Francia G, Kerbel RS (2006) Highly efficacious nontoxic preclinical treatment for advanced metastatic breast cancer using combination oral UFT-cyclophosphamide metronomic chemotherapy. *Cancer Res* 66: 3386–3391
68. Ng SS, Sparreboom A, Shaked Y, Lee C, Man S, Desai N, Soon-Shiong P, Figg WD, Kerbel RS (2006) Influence of formulation vehicle on metronomic taxane chemotherapy: albumin-bound versus cremophor EL-based paclitaxel. *Clin Cancer Res* 12: 4331–4338
69. Furstenberger G, von Moos R, Lucas R, Thurlimann B, Senn HJ, Hamacher J, Boneberg EM (2006) Circulating endothelial cells and angiogenic serum factors during neoadjuvant chemotherapy of primary breast cancer. *Br J Cancer* 94:524–531
70. Dellapasqua S, Bertolini F, Bagnardi V, Campagnoli E, Scarano E, Torrisi R, Shaked Y, Mancuso P, Goldhirsch A, Rocca A, Pietri E, Colleoni M (2008) Metronomic cyclophosphamide and capecitabine combined with bevacizumab in advanced breast cancer. *J Clin Oncol* 26:4899–4905