



**HAL**  
open science

## **The effect of body mass index on overall and disease-free survival in node-positive breast cancer patients treated with docetaxel and doxorubicin-containing adjuvant chemotherapy: the experience of the BIG 02-98 trial**

Evandro Azambuja, Wortá Mccaskill-Stevens, Prudence Francis, Emmanuel Quinaux, John P. A. Crown, Malou Vicente, Rosa Giuliani, Bo Nordenskjöld, Jorge Gutiérrez, Michael Andersson, et al.

### ► **To cite this version:**

Evandro Azambuja, Wortá Mccaskill-Stevens, Prudence Francis, Emmanuel Quinaux, John P. A. Crown, et al.. The effect of body mass index on overall and disease-free survival in node-positive breast cancer patients treated with docetaxel and doxorubicin-containing adjuvant chemotherapy: the experience of the BIG 02-98 trial. *Breast Cancer Research and Treatment*, 2009, 119 (1), pp.145-153. <10.1007/s10549-009-0512-0>. <hal-00535391>

**HAL Id: hal-00535391**

**<https://hal.science/hal-00535391v1>**

Submitted on 11 Nov 2010

**HAL** is a multi-disciplinary open access archive for the deposit and dissemination of scientific research documents, whether they are published or not. The documents may come from teaching and research institutions in France or abroad, or from public or private research centers.

L'archive ouverte pluridisciplinaire **HAL**, est destinée au dépôt et à la diffusion de documents scientifiques de niveau recherche, publiés ou non, émanant des établissements d'enseignement et de recherche français ou étrangers, des laboratoires publics ou privés.



HAL Authorization

# The effect of body mass index on overall and disease-free survival in node-positive breast cancer patients treated with docetaxel and doxorubicin-containing adjuvant chemotherapy: the experience of the BIG 02-98 trial

Evandro de Azambuja · Wortá McCaskill-Stevens · Prudence Francis · Emmanuel Quinaux · John P. A. Crown · Malou Vicente · Rosa Giuliani · Bo Nordenskjöld · Jorge Gutiérrez · Michael Andersson · Mireia Margeli Vila · Raimund Jakesz · Jan Demol · Joanna Dewar · Armando Santoro · Ana Lluh · Steven Olsen · Richard D. Gelber · Angelo Di Leo · Martine Piccart-Gebhart

Received: 6 August 2009 / Accepted: 8 August 2009 / Published online: 3 September 2009  
© Springer Science+Business Media, LLC. 2009

**Abstract** Background: Obesity has been shown to be an indicator of poor prognosis for patients with primary breast cancer (BC) regardless of the use of adjuvant systemic therapy. Patients and methods: This is a retrospective analysis of 2,887 node-positive BC patients enrolled in the BIG 02-98 adjuvant study, a randomised phase III trial whose primary objective was to evaluate disease-free survival

(DFS) by adding docetaxel to doxorubicin-based chemotherapy. In the current analysis, the effect of body mass index (BMI) on DFS and overall survival (OS) was assessed. BMI was obtained before the first cycle of chemotherapy. Obesity was defined as a BMI  $\geq 30$  kg/m<sup>2</sup>. Results: In total, 547 (19%) patients were obese at baseline, while 2,340 (81%) patients were non-obese. Estimated 5-year OS was 87.5% for non-obese and 82.9% for obese patients (HR 1.34;  $P = 0.013$ ). Estimated 5-years DFS was 75.9% for non-obese and 70.0% for obese patients (HR 1.20;  $P = 0.041$ ). In a multivariate model, obesity remained an independent

On behalf of the BIG 02-98 Study Team.

Previous presentation: presented in part at the European Breast Cancer Conference (EBCC)-6, April 15-19, 2008, Berlin, Germany.

E. de Azambuja · M. Piccart-Gebhart (✉)  
Institut Jules Bordet and Université Libre de Bruxelles (U.L.B.),  
Boulevard de Waterloo, 125, 1000 Brussels, Belgium  
e-mail: martine.piccart@bordet.be

W. McCaskill-Stevens  
National Cancer Institute, National Institutes of Health,  
Bethesda, MD, USA

P. Francis  
Peter MacCallum Cancer Centre and St Vincent's Hospital,  
Australian New Zealand Breast Cancer Trials Group,  
Melbourne, VIC, Australia

P. Francis  
Australian New Zealand Breast Cancer Trials Group,  
Newcastle, Australia

P. Francis  
International Breast Cancer Study Group, Bern, Switzerland

E. Quinaux  
International Drug Development Institute, Louvain-La-Neuve,  
Belgium

J. P. A. Crown  
St. Vincent's Hospital, Dublin, Ireland

M. Vicente  
Br.E.A.S.T. Data Centre, Brussels, Belgium

R. Giuliani  
Medical Oncology Unit, S. Camillo-Forlanini Hospital, Rome,  
Italy

B. Nordenskjöld  
Universitetssjukhuset, Oncology, Linköping, Sweden

J. Gutiérrez  
Clínica Las Condes, Las Condes, Santiago, Chile

M. Andersson  
Department of Oncology, The Finsen Centre, Copenhagen  
University Hospital, Rigshospitalet, Denmark

M. M. Vila  
Hospital Germans Trias I Pujol, Badalona, Spain

prognostic factor for OS and DFS. Conclusions: In this study, obesity was associated with poorer outcome in node-positive BC patients. Given the increasing prevalence of obesity worldwide, more research on improving the treatment of obese BC patients is needed.

**Keywords** Breast cancer · Obesity · BMI · Adjuvant chemotherapy · Docetaxel · Node-positive

## Introduction

It is estimated that the worldwide incidence of breast cancer in 2010 will be 1.45 million women [1]. In the United States alone, an estimated 182,460 women were to be diagnosed with breast cancer, and 40,480 women were to die from this disease in 2008 [2]. In the European Union, an estimated 319,900 women were diagnosed with breast cancer and 85,300 women died from this disease in 2006 [3]. There has been a dramatic increase in the prevalence of obesity throughout the developed and developing world over the past 20 years. Obesity prevalence varies from country to country, but overall an estimated 300 million people worldwide are obese [4]. In 2007, only one state in the USA (Colorado) had a prevalence of obesity <20%. Thirty states had a prevalence  $\geq 25\%$ ; three of these states (Alabama, Mississippi and Tennessee) had a prevalence of obesity  $\geq 30\%$  [5]. In general, more women than men are obese [6].

Body mass index (BMI), defined as the weight in kilograms divided by the square of the height in meters ( $\text{kg}/\text{m}^2$ ), is often categorized according to the recommendations of the World Health Organization (WHO): <18.5

(underweight), 18.5–24.99 (normal range), 25–29.99 (overweight),  $\geq 30$ –34.99 (obese) and  $\geq 35$  (excess obesity) [7].

Several studies, including a meta-analysis, have shown that obesity is an adverse prognostic factor in breast cancer patients; however, results were not consistent across all studies since different patient populations (e.g. extent of disease, menopausal status, estrogen receptor status), treatments and BMI cut-offs have been included in these analyses [8–11]. Obesity has been associated with poor outcomes in pre- and postmenopausal patients, and this is not entirely explained by differences in tumor size or nodal status [12]. Notably, obese patients are more likely to receive a lower chemotherapy dose (<85% of expected dose) for the first course compared with patients with normal or intermediate (overweight) BMI, and this reduction impacts negatively on the outcome, particularly in patients with estrogen receptor (ER)-negative tumors [13]. Also, obesity has been associated with an increased risk of contralateral breast cancer and second primary cancers in some studies [8, 14].

Anthracyclines and taxanes have been shown to improve the outcome when used as adjuvant treatment for node-positive breast cancer patients and are widely used [15–17]. To further explore the relationship between obesity and outcome in patients with BC, we performed a retrospective analysis of data from a prospective phase III trial including 2,887 women with node-positive breast cancer. The Breast International Group (BIG) 02-08 randomised trial tested the effect of incorporating docetaxel into anthracycline-based adjuvant chemotherapy and compared sequential versus concurrent administration of doxorubicin and docetaxel. This trial showed that sequential administration of docetaxel appears to produce a better disease-free survival (DFS) than anthracycline-based chemotherapy in node-positive breast cancer patients [15]. We report here the results of an unplanned subgroup analysis comparing clinical outcomes in obese and non-obese patients enrolled in the BIG 02-98 trial.

## Materials and methods

The methods of the BIG 02-98 trial have previously been reported [15]. Briefly, eligible patients were aged 18–70 years with operable, adequately resected breast cancer and at least one positive axillary lymph node among a minimum of eight dissected lymph nodes. A normal left ventricular ejection fraction and adequate hematologic, liver and renal function were required. All patients gave written or witnessed informed consent prior to randomization. Institutional Ethics Committees approved the protocol at all participating sites.

R. Jakesz  
University of Vienna, General Hospital, Vienna, Austria

J. Demol  
Heilig Hart Ziekenhuis, Roeselare, Belgium

J. Dewar  
Sir Charles Gairdner Hospital, Nedlands, Western Australia

A. Santoro  
Istituto Clinico Humanitas, Rozzano, Italy

A. Lluch  
Hospital Clinico Universitario, Valencia, Spain

S. Olsen  
Sanofi-aventis, Paris, France

R. D. Gelber  
Department of Biostatistics and Computational Biology,  
Dana-Farber Cancer Institute, Boston, MA, USA

A. Di Leo  
Sandro Pitigliani Medical Oncology Unit, Hospital of Prato,  
Piazza dell'Ospedale, Prato, Italy

In total, 2,887 patients were randomly assigned to one of the following four chemotherapy arms: (1) four cycles of intravenous (i.v.) doxorubicin 75 mg/m<sup>2</sup> every 3 weeks followed by three cycles of cyclophosphamide, methotrexate and 5-fluorouracil (CMF); (2) four cycles of i.v. doxorubicin 60 mg/m<sup>2</sup> plus i.v. cyclophosphamide 600 mg/m<sup>2</sup> every 3 weeks, followed by three cycles of CMF; (3) three cycles of i.v. doxorubicin 75 mg/m<sup>2</sup> every 3 weeks, followed by three cycles of i.v. docetaxel 100 mg/m<sup>2</sup> every 3 weeks, followed by three cycles of CMF; (4) four cycles of i.v. doxorubicin 50 mg/m<sup>2</sup> plus i.v. docetaxel 75 mg/m<sup>2</sup> every 3 weeks, followed by three cycles of CMF. CMF was given every 4 weeks as oral cyclophosphamide at 100 mg/m<sup>2</sup> on days 1–14 and i.v. methotrexate 40 mg/m<sup>2</sup> plus i.v. 5-fluorouracil 600 mg/m<sup>2</sup> on days 1 and 8. The duration of each chemotherapy regimen was 24 weeks, except for the sequential docetaxel regimen (arm 3) which was 30 weeks.

After chemotherapy, tamoxifen 20 mg/day for 5 years was prescribed for patients with ER- and/or progesterone receptor (PgR)-positive tumors. In 2004, a protocol amendment allowed for the use of aromatase inhibitors in postmenopausal women and the addition of ovarian suppression in premenopausal women. This trial was conducted before the approval of adjuvant trastuzumab therapy. Radiation was mandatory after breast-conserving surgery and administered after mastectomy according to institutional guidelines.

Chemotherapy doses were given according to baseline body surface area (BSA). Actual body weight was used for calculation of BSA, and ideal body weight was not utilized. BSA was recalculated if there was a 10% or greater decrease in body weight compared to baseline. After one obese patient died due to treatment-related toxicity, a protocol amendment in December 2000 limited the chemotherapy dose to a maximum BSA of 2.0 m<sup>2</sup>. At the time of this amendment, approximately 75% of total trial patients had been accrued. BMI was calculated, using height and weight at baseline, as the weight in kilograms divided by height in meters squared.

### Statistical considerations

According to the World Health Organization, patients can be classified in 5 BMI subgroups: underweight <18.5 kg/m<sup>2</sup>; normal 18.5–24.9 kg/m<sup>2</sup>; overweight 25.0–29.9 kg/m<sup>2</sup>; obesity 30.0–34.9 kg/m<sup>2</sup>; and excess obesity ≥35 kg/m<sup>2</sup>. In our analyses, obesity was defined as a BMI ≥ 30 kg/m<sup>2</sup>.

Stratified Cox proportional hazards regression model was used to assess adjusted effect of BMI on DFS and overall survival (OS) [18]. Models were stratified for hormone receptor status, age, menopausal status and number

**Table 1** Patient and tumor characteristics

	Obese (n = 547; 19%)	Non-obese (n = 2,340; 81%)
Median age (range)	52 (29–69)	48 (27–70)
<50 years	205 (37.5%)	1,337 (57.1%)
≥50 years	342 (62.5%)	1,003 (42.9%)
		<b>P &lt; 0.001</b>
Menopausal status		
Premenopausal	226 (41.3%)	1,326 (56.7%)
Postmenopausal	297 (54.3%)	876 (37.4%)
Other	24 (4.4%)	138 (5.9%)
		<b>P &lt; 0.001</b>
pTumour size		
≤2 cm	192 (35.1%)	951 (40.6%)
2.1–5.0 cm	315 (57.6%)	1,208 (51.6%)
>5 cm	39 (7.1%)	168 (7.2%)
Unknown	1 (0.2%)	13 (0.6%)
		<b>P = 0.0527</b>
Positive lymphnodes		
1–3	272 (49.7%)	1,295 (55.3%)
4–10	190 (34.7%)	759 (32.4%)
>10	85 (15.5%)	286 (12.2%)
		<b>P = 0.029</b>
Hormone receptor status		
At least 1 positive	404 (73.9%)	1,776 (75.9%)
Negative	143 (26.1%)	564 (24.1%)
		<b>P = 0.32</b>
Surgery		
Breast conservation	217 (39.7%)	948 (40.5%)
Mastectomy	297 (54.3%)	1,285 (54.9%)
		<b>P = 0.33</b>
Adjuvant endocrine therapy		
Yes	399 (72.9%)	1,726 (73.8%)
		<b>P = 0.70</b>
Previous disease		
Cardiac	182 (33.2%)	272 (11.6%)
		<b>(P &lt; 0.0001)</b>
Diabetes	42 (7.6%)	34 (1.45%)
		<b>(P &lt; 0.0001)</b>
BSA		
Median	1.9	1.7
Range	1.6–2.3	1.3–2.1
		<b>P &lt; 0.0001</b>
BMI		
Median	34.3	24.2
Range	30.0–54.9	15.9–29.9
		<b>P &lt; 0.0001</b>

Bold text indicates statistical significance

BMI body mass index, BSA body surface area

**Table 2** Mean cumulative and relative doses of chemotherapy in obese and non-obese patients

	Obese ( <i>n</i> = 547; 19%)	Non-obese ( <i>n</i> = 2,340; 81%)
<i>Docetaxel</i> <sup>a</sup>	365	1,530
Mean cumulative dose (mg/m <sup>2</sup> )	283.7	287.2 ( <i>P</i> = 0.43)
Mean relative dose intensity (%)	95.0	96.0 ( <i>P</i> = 0.72)
<i>Doxorubicin</i>	543 <sup>b</sup>	2,322 <sup>b</sup>
Mean cumulative dose (mg/m <sup>2</sup> )	228.4	227.6
Mean relative dose intensity (%)	97.7	<i>P</i> = 0.64
<i>CMF</i> <sup>c</sup>	543 <sup>b</sup>	2,322 <sup>b</sup>
Mean relative dose intensity (%)	92.8	96.9
		<i>P</i> = 0.87
		<b><i>P</i> = 0.01</b>

Bold text indicates statistical significance

<sup>a</sup> Two thirds of patients were randomized to receive docetaxel

<sup>b</sup> Missing patients is because some patients did not start treatment or have insufficient data. Data for each drug is reported separately and not as a regimen

<sup>c</sup> Mean cumulative dose of CMF was not calculated

**Table 3** Five-year overall and disease-free survival in 2,887 node-positive breast cancer patients according to BMI categories

Subgroup	No. pts	5-years (%)	HR (95% CI)	<i>P</i> value
<b>Overall survival</b>				
Non-obese <sup>a</sup>	2,340	87.5		
Obese	547	82.9	1.34 (1.06–1.69)	<b>0.013</b>
Underweight <sup>b</sup>	50	91.3	0.80 (0.33–1.96)	0.63
Normal	1,315	89.3	Reference	
Overweight	975	84.9	1.24 (0.98–1.56)	0.069
Obesity	371	84.9	1.44 (1.07–1.94)	<b>0.016</b>
Excess obesity	176	79.7	1.56 (1.07–2.28)	<b>0.021</b>
<b>Disease-free survival</b>				
Non-obese <sup>a</sup>	2,340	75.9		
Obese	547	70.0	1.20 (1.01–1.44)	<b>0.041</b>
Underweight <sup>b</sup>	50	67.0	1.59 (0.97–2.59)	0.065
Normal	1,315	78.0	Reference	
Overweight	975	73.6	1.15 (0.97–1.37)	0.10
Obesity	371	69.5	1.41 (1.13–1.76)	<b>0.003</b>
Excess obesity	176	71.2	1.10 (0.80–1.50)	0.56

Bold text indicates statistical significance

*CI* confidence interval, *HR* hazard ratios

<sup>a</sup> Using cut-off of  $\geq 30$  Kg/m<sup>2</sup>

<sup>b</sup> Using WHO classification: underweight  $< 18.5$  kg/m<sup>2</sup>; normal 18.5–24.9 kg/m<sup>2</sup>; overweight 25.0–29.9 kg/m<sup>2</sup>; obesity 30.0–34.9 kg/m<sup>2</sup> and excess obesity  $\geq 35$  kg/m<sup>2</sup>

of positive lymph nodes. Multivariate models with hormone receptor status, age, menopausal status, tumor size and number of positive lymph nodes as covariates were fitted as sensitivity analyses.

BMI was used as a dichotomous variable in the model. Kaplan–Meier methods were used to estimate survival curves. Interaction tests between BMI and other patient

characteristics were performed to determine whether the effect of BMI differed depending on the level of the variables. DFS was calculated from the date of randomization to the first date of a local, regional, or distant relapse; of the diagnosis of a second primary cancer, including contralateral invasive breast cancer; or of death from any cause. Stratified Log rank tests were used to compare time to death (when death was the first event), time to distant relapse and time to second primary cancer between obese and non-obese patients. Overall survival was calculated from the date of randomization to the date of death from any cause.

All reported *P* values are two-sided, and *P* < 0.05 was considered statistically significant. All statistical analyses were performed using SAS for Windows (release 9.1; SAS Institute, Cary, NC).

## Results

### Relationship between patient and tumor characteristics and BMI categories

In total, 2,887 patients were enrolled in the BIG 02-98 phase III trial from June 10, 1998 to June 26, 2001. The median follow-up at the time of this analysis was 62.5 months. Using the cut-off of  $\geq 30$  Kg/m<sup>2</sup>, 547 patients (19%) were classified as obese, and 2,340 patients (81%) were classified as non-obese at study entry. Patient and tumor characteristics are described in Table 1. Median age was 52 years (29–69) in obese and 48 years (27–70) in non-obese patients. Obese patients were more likely to be older ( $\geq 50$  years), postmenopausal, to have larger tumors (2.1–5.0 cm), and 4 or more positive lymph nodes compared with non-obese patients. Obese patients were more likely to have a history of cardiac disease and diabetes at study entry compared with non-obese patients (*P* < 0.001 for both).

There were no significant differences in mean cumulative dose (calculated as  $\text{mg}/\text{m}^2$ ) and relative dose intensity for doxorubicin and docetaxel between obese and non-obese patients, although, obese patients were more likely to receive a slightly higher mean relative dose intensity of CMF (Table 2). Therefore, no undertreatment was observed in our obese patient population. During chemotherapy administration, 604 patients (21.08%) had dose reductions with non-significant differences between obese and non-obese patients (20.3 versus 21.3%, respectively;  $P = 0.6$ ).

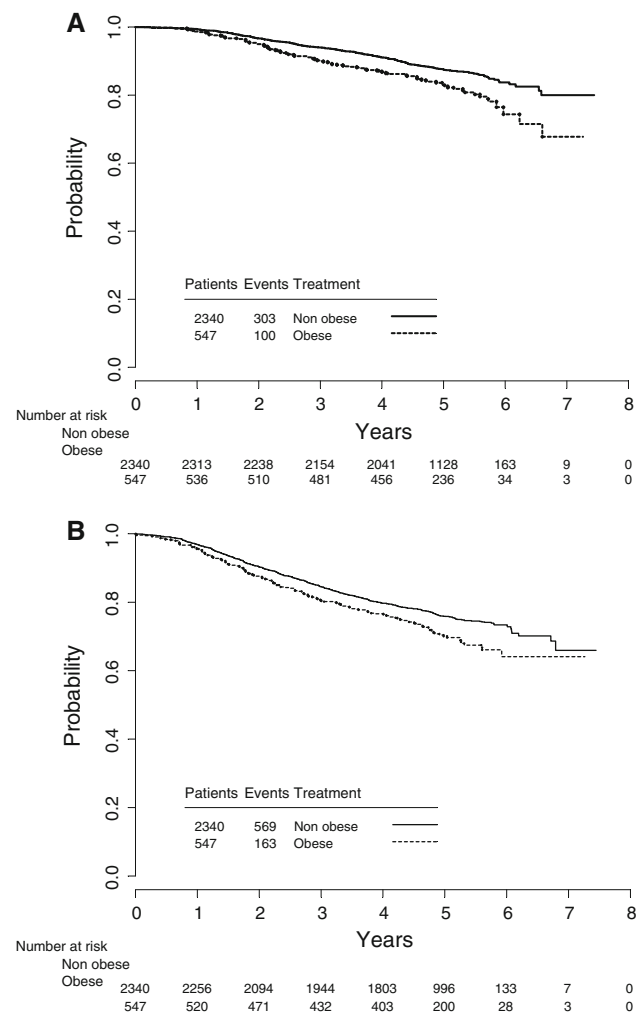
### Obesity and survival

Obese patients had a worse outcome compared with non-obese patients in terms of overall survival and DFS (Table 3). Estimated 5-year overall survival was 82.9% for obese and 87.5% for non-obese patients [Hazard ratio (HR) 1.34; 95% confidence interval (CI) 1.06–1.69;  $P = 0.0134$ ; unadjusted HR 1.48;  $P = 0.0007$ ] and estimated 5-year DFS was 70.0% for obese and 75.9% for non-obese patients (HR 1.20; 95% CI 1.01–1.44;  $P = 0.041$ ; unadjusted HR 1.29;  $P = 0.005$ ) (Fig. 1a, b). When diabetes and history of cardiac disease were added to the model, obesity remained a significant prognostic factor ( $P = 0.03$  for DFS and  $P = 0.006$  for OS). These differences were also evident when the population was divided according to the 5 WHO BMI subgroups ( $P = 0.016$  for “obesity” versus normal for overall survival, and  $P = 0.003$  for “obesity” versus normal for DFS) (Table 3).

There were no significant differences between obese and non-obese patients in terms of time to death as first event, time to breast cancer relapse and time to second primary tumor.

In univariate analysis, among obese patients, those with  $\geq 4$  positive lymph nodes ( $P = 0.012$ ), or who were premenopausal ( $P = 0.01$ ) or age  $< 50$  years at randomization (0.0011) had a significantly worse overall survival compared with non-obese patients (Fig. 2a, b). The detrimental effect of obesity on overall survival was greater for younger than for older women ( $P$  interaction test = 0.041) (Fig. 2a). In a multivariate model with hormone receptor status, age, menopausal status, tumor size and number of positive lymph nodes as covariates, obesity remains an independent prognostic factor for overall survival (HR 1.36;  $P = 0.008$ ) and DFS (HR 1.20;  $P = 0.04$ ) (Table 4).

In this study, we also performed subgroup analysis according to ER and PgR status (Fig. 2a, b). In this analysis, obese patients appear to have a worse outcome in patients with at least one hormone receptor negative. At the moment of this analysis, the results of HER2 status were not available but, in the future, such an analysis may provide additional insights into these results.



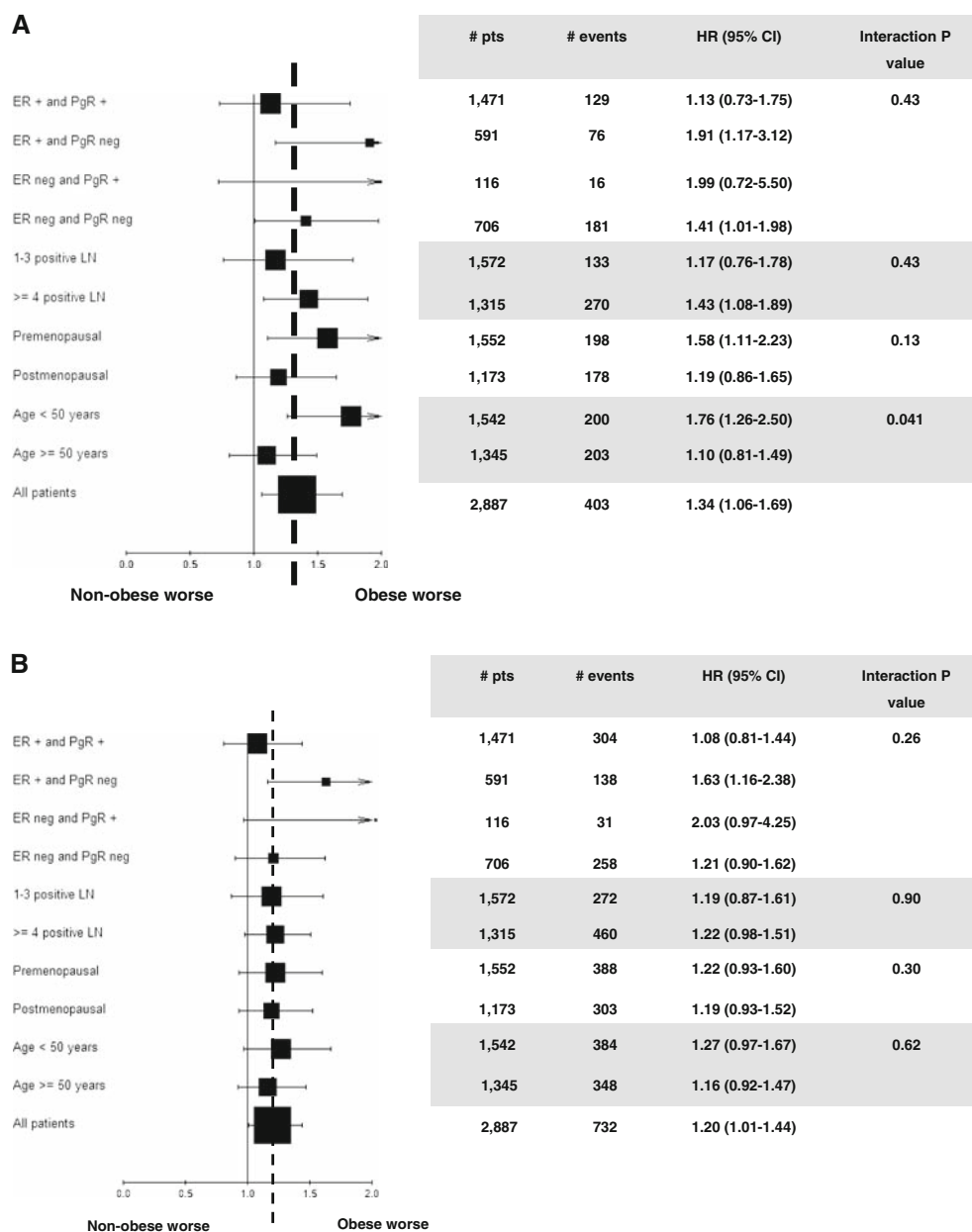
**Fig. 1** a Kaplan–Meier estimates of overall survival by obesity at baseline for obese versus non-obese patients. b Kaplan–Meier estimates of disease-free survival by obesity at baseline for obese versus non-obese patients

Regarding Grade 3–4 adverse events, obese patients were more likely to have diarrhea, hyperglycemia, hypertension, infection and hospitalization due to an adverse event than non-obese patients (Table 5).

### Discussion

In this retrospective analysis of a large, well-conducted, randomised phase III trial of adjuvant chemotherapy, obesity was associated with poorer outcome in terms of overall survival and DFS, remaining an independent prognostic factor in the multivariate model. A cohort of obese node-positive patients ( $n = 833$ ) included in several International Breast Cancer Study Group trials had a worse 10-year overall survival, but no difference was seen in DFS [19].

**Fig. 2 a** Forest-plot estimates of overall survival for obese versus non-obese patients according to different subgroups. **b** Forest-plot estimates of disease-free survival for obese versus non-obese patients according to different subgroups. *CI* confidence interval, *ER* estrogen receptor, *HR* hazard ratios, *LN* lymphnode, *Neg* negative, *PgR* progesterone receptor, # number and + positive



Other studies have shown that obese patients are more likely to be undertreated because of chemotherapy dose adjustments. However, in our study, no significantly lower treatment dose or intensity had been given to obese patients. In a recent review of 44 trials, of 22 protocols initiated prior to December 1984, 21 (95%) either did not directly address dose determinations in obese patients ( $n = 9$ ) or specified dose reduction ( $n = 12$ ) in obese patients. By contrast, of 22 protocols initiated after December 1984, 10 (45%) specified full weight-based dosing, 7 (32%) specified dose limits and 5 (23%) provided no specific information on chemotherapy dosing in obese patients ( $P = 0.004$ ) [20]. Importantly, underdosing chemotherapy may contribute to the poorer survival rates in

patients with breast cancer, particularly in those with ER-negative tumors [13].

A retrospective analysis of the relationship between BMI and pathologic response (pCR) in 1,169 patients receiving neoadjuvant chemotherapy showed that obese patients were more likely to have ER-negative tumors ( $P = 0.01$ ), stage III tumors ( $P < 0.01$ ) and worse OS ( $P = 0.006$ ). In the multivariate model, there was no significant difference in pathologic complete response (pCR) rates to neoadjuvant chemotherapy for obese compared with normal/underweight patients. However, when overweight and obese groups were combined and compared with normal/underweight groups, there was a significant association, with higher BMI associated with lower pCR

**Table 4** Events used for disease-free and overall survival calculations

	Obese ( <i>n</i> = 547; 19%)	Non-obese ( <i>n</i> = 2,340; 81%)
<i>Death (all)</i>	100 (18.3%)	303 (12.3%) <i>P</i> = 0.013**
Breast cancer	91 (91.0%)	277 (91.4%)
Other	9 (9%)	26 (8.6%)
<i>Death (first event)<sup>a</sup></i>	6	14 <i>P</i> = 0.30**
Breast cancer	1 (16.7%)	5 (35.7%)
Other	4 (66.7%)	4 (28.6%)
Septic from study therapy	1 (16.7%)	3 (21.4%)
Missing or unknown	0	2 (14.3%)
<i>Breast cancer relapse<sup>*.b</sup></i>	139	502 <i>P</i> = 0.078**
Local	22 (15.8%)	95 (18.9%)
Regional	7 (5%)	34 (6.8%)
Distant	120 (86.3%)	414 (82.5%)
<i>Second primary tumor<sup>c</sup></i>	17	53 <i>P</i> = 0.48**
Endometrium	2 (11.8%)	5 (9.4%)
Ovarian	2 (11.8%)	2 (3.8%)
Breast	5 (29.4%)	15 (28.3%)
Other	8 (47%)	31 (58.5%)

\* Some patients may have more than one type of relapse

\*\* Adjusted Log rank test comparing the time to event

<sup>a</sup> Obese (1.09%) and non-obese (0.6%)

<sup>b</sup> Obese (25.4%) and non-obese (21.4%)

<sup>c</sup> Obese (3.1%) and non-obese (2.2%)

rates [21]. Unfortunately, chemotherapy-dosing patterns (dose administered and/or dose reductions) were not available in this study and reduction in dosing because of obesity may influence pCR and survival. Therefore, obesity may be linked not only to prognosis but also to prediction of response to neo-adjuvant chemotherapy.

In our study, worse overall survival was observed in obese patients with  $\geq 4$  lymph nodes, premenopausal or patients aged  $\leq 50$  years; however, interaction test was significant for age only (Fig. 2a). Our finding that BMI has a greater effect on prognosis in younger women and less effect on older or postmenopausal patients is consistent with the results of other studies [22, 23]. A trend toward a larger impact of obesity on worsening outcome was observed for patients with at least one hormone receptor negative, similar to the results of one other study [24].

The exact mechanism responsible for the effect of obesity on breast cancer outcomes remains unclear, but it is known that the obesity has effects on a number of hormones including estrogen and growth factors potentially

**Table 5** Incidence of grade 3–4 adverse events in the safety population

	Obese ( <i>n</i> = 543; 19%)	Non-obese ( <i>n</i> = 2,322; 81%)
Allergy	1.5	0.7
Anemia	1.8	2.6
Any cardiac event	0.7	0.6
Diarrhea	<b>4.4</b>	<b>2.2*</b>
Febrile neutropenia	8.7	7.5
Hyperglycemia	<b>0.7</b>	<b>0.1**</b>
Hypertension	<b>0.7</b>	<b>0.1***</b>
Infection	<b>8.8</b>	<b>4.7<sup>£</sup></b>
Myalgia	1.5	1.2
Nausea	7.0	5.3
Neurosensory	0.4	0.2
Pulmonary	2.0	0.3
Skin	1.7	0.8
Stomatitis	5.5	4.9
Thrombocytopenia	2.8	2.2
Vomiting	5.9	4.8
Hospitalization due to AE	<b>22.9</b>	<b>16.8<sup>££</sup></b>
Toxic death	0.2	0.1

Bold text indicates statistical significance. Values are given in percentage

\* *P* = 0.027

\*\* *P* = 0.014

\*\*\* *P* = 0.028

<sup>£</sup> *P* = 0.002

<sup>££</sup> *P* = 0.0009

linked to breast cancer. Also, the obesity-related consequences include altered concentrations of circulating adipocytokines and development of the insulin resistance including hyperinsulinemia and impaired glucose metabolism [25]. Obesity has been associated with an increased risk of developing breast cancer particularly in postmenopausal patients with ER-positive and PgR-positive tumors (82% higher risk; 95% CI 55–114%) [26]. We found a worse outcome in subgroup analysis in those patients presenting ER-positive and PgR-negative tumors or both ER- and PgR-negative tumors (Fig. 2a, b). Although subgroup analyses may be informative, they are often confounded by the increased likelihood of false positive and/or negative results; therefore, they should always be interpreted with caution. Conversely, for women with lymph node-negative, ER-positive breast cancer included in the NSABP B14 trial, obesity was not associated with increase in recurrence risk or a change in tamoxifen efficacy, though there was an increased risk of contralateral breast cancer and overall mortality [27].

Obesity has also been studied in other solid tumors such as colon cancer. Notably, neither BMI nor weight changes (loss or gain during the time period between ongoing adjuvant chemotherapy and 6 months after its completion) were associated with a significantly increased risk of cancer recurrence and death in patients with colon cancer enrolled on a randomised phase III trial of adjuvant chemotherapy [28], which is in contrast with results of other studies demonstrating that obesity may be associated with these outcomes [29–31].

Some potential limitations for our study should be considered, and they include a lack of data collection on body habitus such as waist-hip ratio or waist circumference; also an analysis of changes in weight at the end of adjuvant chemotherapy or during follow-up was not performed; and the reporting of unplanned subgroup analysis. Nevertheless, our study has several strengths such as (a) the large sample size included in the analysis (nearly 3,000 patients); (b) the detailed information on previous diseases and the precise information on weight and height prior to chemotherapy and (c) homogenous treatment (adjuvant chemotherapy per protocol) given to patients rather than several regimens widely prescribed.

In spite of such limitations, this study strongly supports the negative effect of obesity in women with node-positive breast cancer treated with adjuvant chemotherapy within the framework of a large randomised trial. Given the increasing prevalence of obesity worldwide, more research on improving the treatment of obese breast cancer patients is needed.

**Acknowledgments** We thank the patients, physicians, nurses and data managers who participated in BIG 02-98 and the staff at the central offices of the cooperative groups. The following cooperative groups participated: Breast European Adjuvant Studies Team, International Breast Cancer Study Group (including Australian New Zealand Breast Cancer Trials Group), Irish Clinical Oncology Research Group, Grupo Español de Investigación en Cáncer de Mama, Danish Breast Cancer Cooperative Group, Swedish Breast Cancer Group, Austrian Breast and Colorectal Cancer Study Group and Grupo Oncológico Cooperativo Chileno De Investigación. The BIG 02-98 trial was supported by the National Health and Medical Research Council (project grants 100925 and 351164 to Australian New Zealand Breast Cancer Trials Group).

## References

1. Ferlay J, Bray F, Pisani P, Parkin DM (2001) *Globocan 2000. Cancer incidence, mortality and prevalence worldwide. Version 1.0. IARC CancerBase No. 5. IARC Press, Lyon*
2. *Cancer Facts & Figs 2008* (2008) Graphs and figures. (In Edition 2008)
3. Ferlay J, Autier P, Boniol M et al (2007) Estimates of the cancer incidence and mortality in Europe in 2006. *Ann Oncol* 18:581–592
4. World Health Organization (2008) *Controlling the global obesity epidemic* (In Edition 2008)
5. *U.S. Obesity Trends 1985-2007* (2008) (In Edition 2008)
6. Caterson ID, Gill TP (2002) Obesity: epidemiology and possible prevention. *Best Pract Res Clin Endocrinol Metab* 16:595–610
7. World Health Organization (2008) *Global database on body mass index* (In Edition 2008)
8. Dignam JJ, Wieand K, Johnson KA et al (2006) Effects of obesity and race on prognosis in lymph node-negative, estrogen receptor-negative breast cancer. *Breast Cancer Res Treat* 97:245–254
9. Vitolins MZ, Kimmick GG, Case LD (2008). BMI influences prognosis following surgery and adjuvant chemotherapy for lymph node positive breast cancer. *Breast J* 14(4):357–365
10. Ryu SY, Kim CB, Nam CM et al (2001) Is body mass index the prognostic factor in breast cancer?: a meta-analysis. *J Korean Med Sci* 16:610–614
11. Chlebowski RT, Aiello E, McTiernan A (2002) Weight loss in breast cancer patient management. *J Clin Oncol* 20:1128–1143
12. Loi S, Milne RL, Friedlander ML et al (2005) Obesity and outcomes in premenopausal and postmenopausal breast cancer. *Cancer Epidemiol Biomarkers Prev* 14:1686–1691
13. Colleoni M, Li S, Gelber RD et al (2005) Relation between chemotherapy dose, oestrogen receptor expression, and body-mass index. *Lancet* 366:1108–1110
14. Majed B, Moreau T, Senouci K et al (2008) Is obesity an independent prognosis factor in woman breast cancer? *Breast Cancer Res Treat* 111:329–342
15. Francis P, Crown J, Di Leo A et al (2008) Adjuvant chemotherapy with sequential or concurrent anthracycline and docetaxel: Breast International Group 02–98 randomized trial. *J Natl Cancer Inst* 100:121–133
16. Roche H, Fumoleau P, Spielmann M et al (2006) Sequential adjuvant epirubicin-based and docetaxel chemotherapy for node-positive breast cancer patients: the FNCLCC PACS 01 Trial. *J Clin Oncol* 24:5664–5671
17. Martin M, Pienkowski T, Mackey J et al (2005) Adjuvant docetaxel for node-positive breast cancer. *N Engl J Med* 352:2302–2313
18. Cox DR (1972) Regression models and life-tables (with discussion). *J Royal Stat Sc B* 34:187–220
19. Berclaz G, Li S, Price KN et al (2004) Body mass index as a prognostic feature in operable breast cancer: the International Breast Cancer Study Group experience. *Ann Oncol* 15:875–884
20. Greenman CG, Jagielski CH, Griggs JJ (2008) Breast cancer adjuvant chemotherapy dosing in obese patients: dissemination of information from clinical trials to clinical practice. *Cancer* 112:2159–2165
21. Litton JK, Gonzalez-Angulo AM, Warneke CL et al (2008) Relationship between obesity and pathologic response to neoadjuvant chemotherapy among women with operable breast cancer. *J Clin Oncol* 26:4072–4077
22. Lees AW, Jenkins HJ, May CL et al (1989) Risk factors and 10-year breast cancer survival in northern Alberta. *Breast Cancer Res Treat* 13:143–151
23. Hebert JR, Hurley TG, Ma Y (1998) The effect of dietary exposures on recurrence and mortality in early stage breast cancer. *Breast Cancer Res Treat* 51:17–28
24. Maehle BO, Tretli S (1996) Pre-morbid body-mass-index in breast cancer: reversed effect on survival in hormone receptor negative patients. *Breast Cancer Res Treat* 41:123–130
25. Cust AE, Stocks T, Lukanova A et al (2009) The influence of overweight and insulin resistance on breast cancer risk and tumour stage at diagnosis: a prospective study. *Breast Cancer Res Treat* 113:567–576
26. Suzuki R, Orsini N, Saji S et al (2009) Body weight and incidence of breast cancer defined by estrogen and progesterone receptor status—A meta-analysis. *Int J Cancer* 124:698–712
27. Dignam JJ, Wieand K, Johnson KA et al (2003) Obesity, tamoxifen use, and outcomes in women with estrogen receptor-positive early-stage breast cancer. *J Natl Cancer Inst* 95:1467–1476

28. Meyerhardt JA, Niedzwiecki D, Hollis D et al (2008) Impact of body mass index and weight change after treatment on cancer recurrence and survival in patients with stage III colon cancer: findings from Cancer and Leukemia Group B 89803. *J Clin Oncol* 26:4109–4115
29. Meyerhardt JA, Catalano PJ, Haller DG et al (2003) Influence of body mass index on outcomes and treatment-related toxicity in patients with colon carcinoma. *Cancer* 98:484–495
30. Dignam JJ, Polite BN, Yothers G et al (2006) Body mass index and outcomes in patients who receive adjuvant chemotherapy for colon cancer. *J Natl Cancer Inst* 98:1647–1654
31. Haydon AM, Macinnis RJ, English DR, Giles GG (2006) Effect of physical activity and body size on survival after diagnosis with colorectal cancer. *Gut* 55:62–67