



**HAL**  
open science

## Differential effects of MDM2 SNP309 polymorphism on breast cancer risk along with race: a meta-analysis

Konstantinos P. Economopoulos, Theodoros N. Sergentanis

### ► To cite this version:

Konstantinos P. Economopoulos, Theodoros N. Sergentanis. Differential effects of MDM2 SNP309 polymorphism on breast cancer risk along with race: a meta-analysis. *Breast Cancer Research and Treatment*, 2009, 120 (1), pp.211-216. 10.1007/s10549-009-0467-1 . hal-00535383

**HAL Id: hal-00535383**

**<https://hal.science/hal-00535383>**

Submitted on 11 Nov 2010

**HAL** is a multi-disciplinary open access archive for the deposit and dissemination of scientific research documents, whether they are published or not. The documents may come from teaching and research institutions in France or abroad, or from public or private research centers.

L'archive ouverte pluridisciplinaire **HAL**, est destinée au dépôt et à la diffusion de documents scientifiques de niveau recherche, publiés ou non, émanant des établissements d'enseignement et de recherche français ou étrangers, des laboratoires publics ou privés.

## Differential effects of MDM2 SNP309 polymorphism on breast cancer risk along with race: a meta-analysis

Konstantinos P. Economopoulos ·  
Theodoros N. Sergentanis

Received: 27 June 2009 / Accepted: 30 June 2009 / Published online: 10 July 2009  
© Springer Science+Business Media, LLC. 2009

**Abstract** MDM2 SNP309 is a single nucleotide T > G polymorphism present in intron 1 of the MDM2 gene. A variety of case–control studies have been published evaluating the association between MDM2 SNP309 and breast cancer risk. However, the published studies, as well as the subsequent meta-analyses, have yielded contradictory results. This meta-analysis aims to examine whether MDM2 SNP309 polymorphism may exert a differential effect on breast cancer risk along with race. Eligible articles were identified by a search of MEDLINE, Cochrane and EMBASE bibliographical databases for the period July 1993 to June 2009; 16 case–control studies were eligible (12,986 breast cancer cases, 12,993 controls). Subanalyses in case–control studies conducted on Chinese (3 studies, 892 cases, 1,435 controls) and non-Chinese populations (13 studies, 12,094 cases, 11,558 controls) were performed. All pooled odds ratios (ORs) were derived from fixed-effects models given that the between-study heterogeneity was not statistically significant. Subanalysis on Chinese subjects demonstrated that GT and GG genotype were associated with increased breast cancer risk (pooled OR = 1.272, 95% CI 1.025–1.578 and pooled OR = 1.323, 95% CI 1.034–1.694, respectively); as a result the overall effect of the G allele was statistically significant (pooled OR = 1.287, 95% CI 1.048–1.579). On the contrary, no significant associations between MDM2 SNP309 status and breast cancer risk were

demonstrated in non-Chinese populations. In conclusion, the association between MDM2 SNP309 and breast cancer is modified by race. MDM2 SNP309 represents a risk factor for breast cancer in Chinese women but not in non-Chinese women. This phenomenon is analogous to that described in the context of lung cancer.

**Keywords** Breast cancer · MDM2 polymorphism · SNP309 · Meta-analysis · Race

### Introduction

MDM2 is a well-established negative regulator of the p53 tumor suppressor protein, directly binding to the latter and resulting in its ubiquitination [1]. Apart from this crucial function, MDM2 is also capable of mediating p53-independent actions [2]. In line with its overall role in carcinogenesis, MDM2 is a key molecule involved in breast cancer [3].

A single nucleotide T > G polymorphism present in intron 1 of the MDM2 gene, known as MDM2 SNP309, has drawn the attention of the scientific community, given that it has been associated with enhanced binding affinity of the transcription factor Sp1 and consequently enhanced MDM2 expression [4]. Concerning breast cancer, the discovery of the polymorphism has prompted investigators to conduct a variety of case–control studies, so as to examine whether MDM2 SNP309 is associated with breast cancer risk [5–20], age of onset [7, 11, 15, 16, 18, 19] and prognosis [5, 16, 18, 19].

The above studies have yielded contradictory results; interestingly enough, the existing controversy became evident also at the level of meta-analyses having appeared 2 years ago [21, 22]. Hu et al. [21] reported that SNP309GG is associated with overall cancer risk, after

K. P. Economopoulos · T. N. Sergentanis  
School of Medicine, National University of Athens,  
Athens, Greece

K. P. Economopoulos (✉) · T. N. Sergentanis  
Society of Junior Doctors, 5 Menalou Street,  
15123 Maroussi, Athens, Greece  
e-mail: economopoulos@gmail.com  
URL: www.sni.gr

performing a meta-analysis on 21 case–control studies among which ten were specifically focused on breast cancer; as a result, the researchers characterized MDM2 SNP309 as a “low-penetrance susceptibility tumor marker”. On the other hand, Wilkening et al. [22] made the clear distinction between breast, colorectal and lung cancer in their meta-analysis and concluded that SNP309 status does not represent a risk factor for breast cancer.

Nearly 2 years since the above two contradictory meta-analyses, seven more case–control studies on the association between SNP309 and breast cancer have appeared [14–20]; this represents approximately 50% of the number of studies having been included in the previous meta-analyses. Therefore, the need for an updated meta-analysis of results has become evident. This meta-analysis aims to shed light on controversies, assessing directly whether SNP309 status is associated with breast cancer risk.

## Method

### Trial identification

Eligible articles were identified by a search of MEDLINE, Cochrane and EMBASE bibliographical databases for the period July 1993 to June 2009 (last search: June 20, 2009), using combinations of the following keywords: “breast cancer”, “MDM2”, “SNP309”, “polymorphism” and “mouse double minute 2”. In addition, we checked all the references of relevant reviews and eligible articles that our search retrieved. Language restrictions were not used and two investigators (KPE and TNS), working independently, searched the literature and extracted data from each eligible case–control study.

### Eligible studies and data abstraction

All case–control studies with any sample size examining the association of SNP309 polymorphism with breast cancer (i.e. reporting the frequencies of TT, TG and GG genotypes in cases and controls) were considered eligible for this analysis. For each of the eligible case–control studies, the following data were collected: journal name, year of publication, inclusion and exclusion criteria, demographic characteristics of the population being studied and frequencies of TT, TG and GG genotypes in cases and controls.

### Statistics

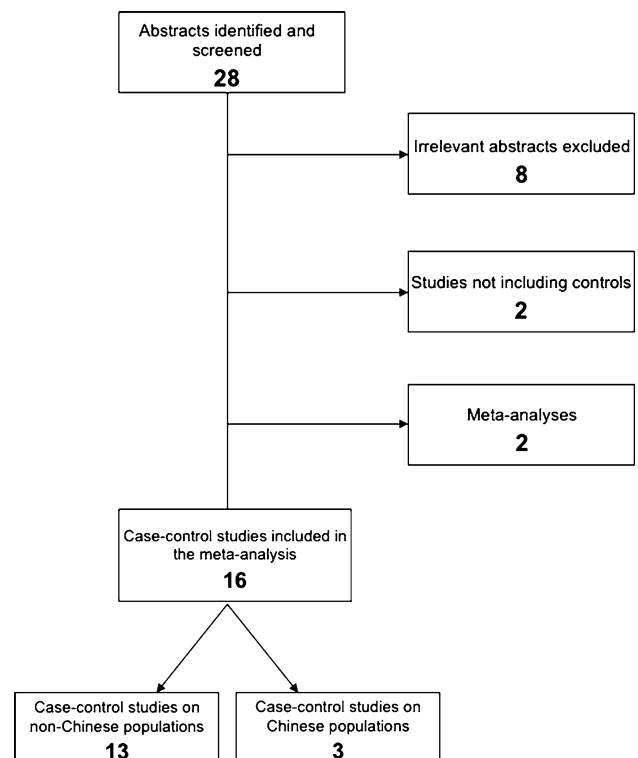
Based on the genotype frequencies in cases and controls, crude odds ratios (ORs) as well as their standard errors (SE) were calculated. The ORs pertained to genotype GT (heterozygous vs. TT), genotype GG (homozygous vs. TT)

and the G allele (G allele carriers, i.e. GT plus GG vs. TT). Three separate analyses were performed: (1) overall association between MDM2 SNP309 status (homozygous, heterozygous, G allele) and breast cancer risk, (2) sub-analysis in case–control studies conducted on Chinese populations and (3) subanalysis in case–control studies conducted on non-Chinese populations.

The fixed-effects model (Mantel–Haenszel method), as well as the random effects (DerSimonian Laird) model, were used to calculate the pooled OR. Between-study heterogeneity and between-study inconsistency were assessed by using Cochran Q statistic and by estimating  $I^2$ , respectively [23]. In case no significant heterogeneity was detected, the fixed-effects model was chosen. Evidence of publication bias was determined using Begg’s formal statistical test [24] and by visual inspection of the funnel plot. For the interpretation of Begg’s test, statistical significance was defined as  $p < 0.1$ . Analyses were conducted using STATA 10.0 (STATA Corp. College Station, TX, USA) and meta-analysis was performed using the “metan” command.

## Results

Figure 1 graphically illustrates the trial flow chart. Out of the 28 abstracts retrieved through the search criteria, eight



**Fig. 1** Study flow chart. Explaining the selection of the 16 eligible case–control studies

studies were irrelevant and two studies were excluded [25, 26] given that they have not included controls in their study design, and two articles were meta-analyses [21, 22]. As a result, 16 case–control studies (12,986 breast cancer cases, 12,993 controls) were included in this meta-analysis [5–20]. Three studies had been performed in Chinese populations [8, 16, 19].

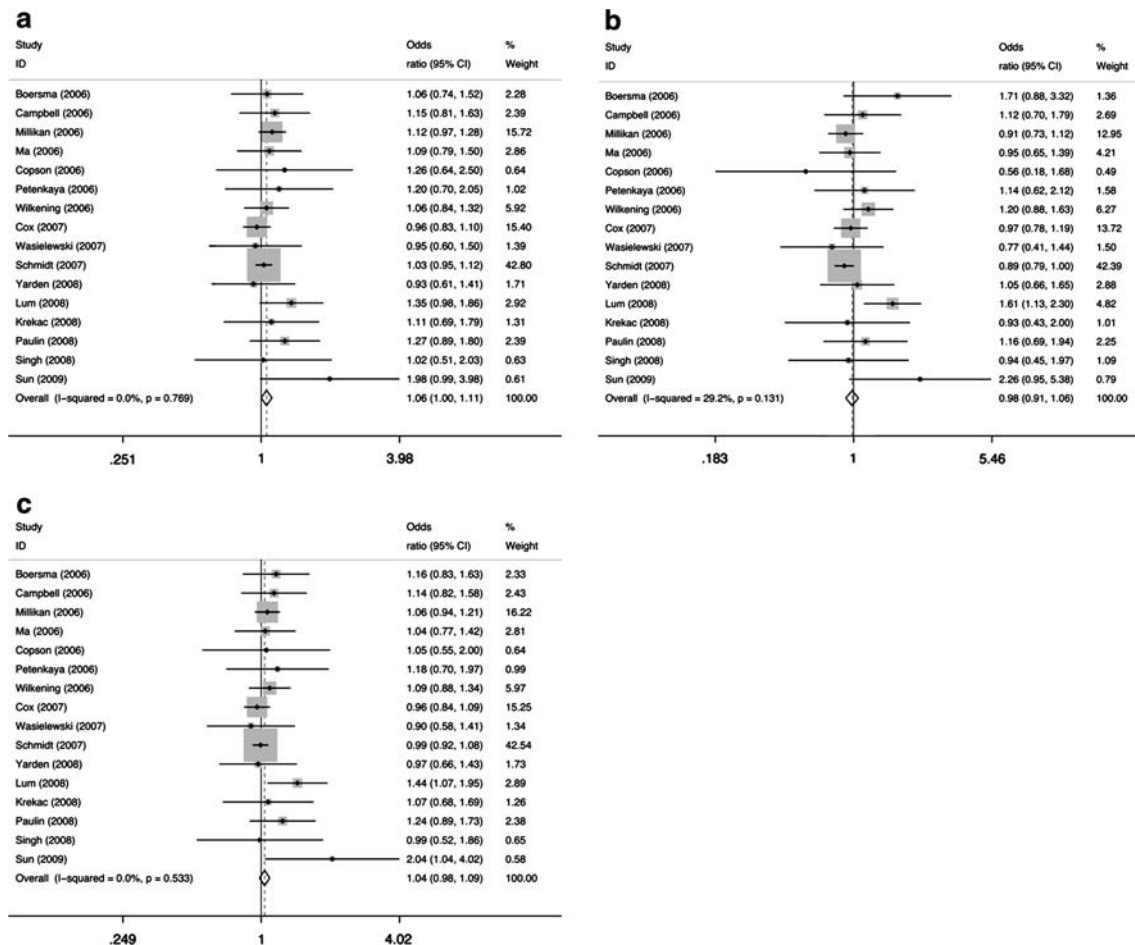
In the overall analysis, GT genotype was associated with increased breast cancer risk (pooled OR = 1.056, 95% CI 1.000–1.115, Fig. 2a). On the contrary, GG genotype was not associated with breast cancer risk (pooled OR = 0.981, 95% CI 0.908–1.060, Fig. 2b). The overall effect of the G allele on breast cancer risk was not statistically significant (OR = 1.036, 95% CI 0.984–1.090, Fig. 2c).

The subanalysis on Chinese subjects (892 cases, 1,435 controls) demonstrated that GT and GG genotype were associated with increased breast cancer risk (pooled

OR = 1.272, 95% CI 1.025–1.578, Fig. 3a, and pooled OR = 1.323, 95% CI 1.034–1.694, Fig. 3b, respectively). The overall effect of the G allele was statistically significant (pooled OR = 1.287, 95% CI 1.048–1.579, Fig. 3c).

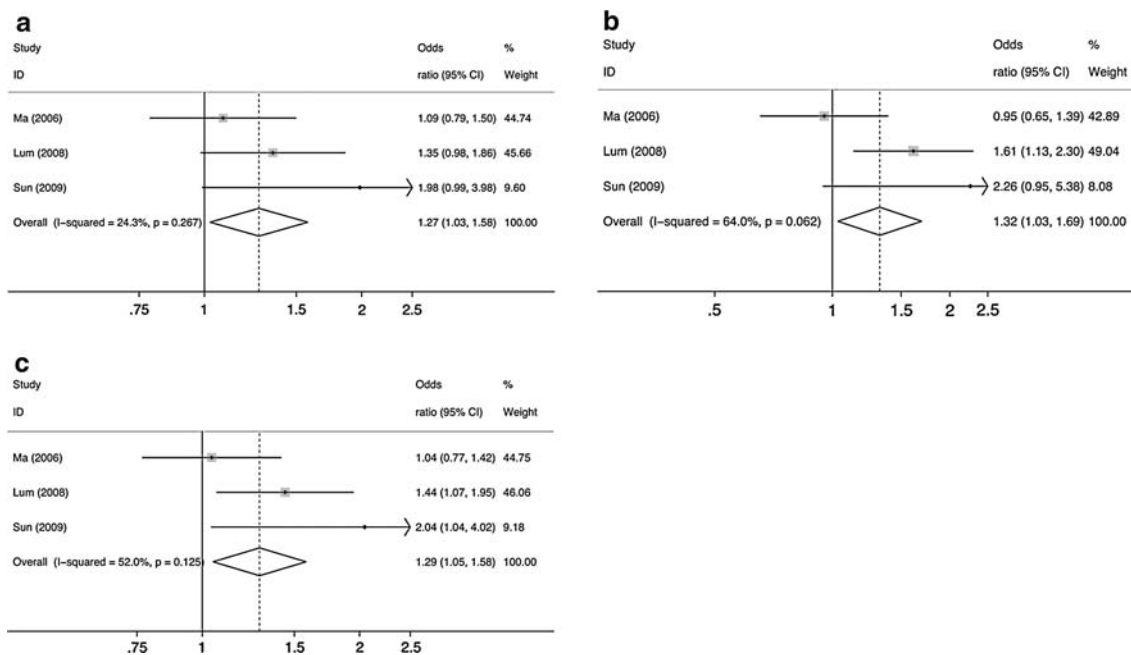
The subanalysis on non-Chinese subjects (12,094 cases, 11,558 controls) demonstrated that neither GT nor GG genotype were associated with breast cancer risk (pooled OR = 1.042, 95% CI 0.985–1.103, Fig. 4a, and pooled OR = 0.950, 95% CI 0.875–1.030, Fig. 4b, respectively). As expected, the effect of G allele was not statistically significant (pooled OR = 1.021, 95% CI 0.968–1.076, Fig. 4c).

All pooled ORs were derived from fixed-effects models given that the between-study heterogeneity was not statistically significant. The Begg's test did not demonstrate any statistically significant publication bias.

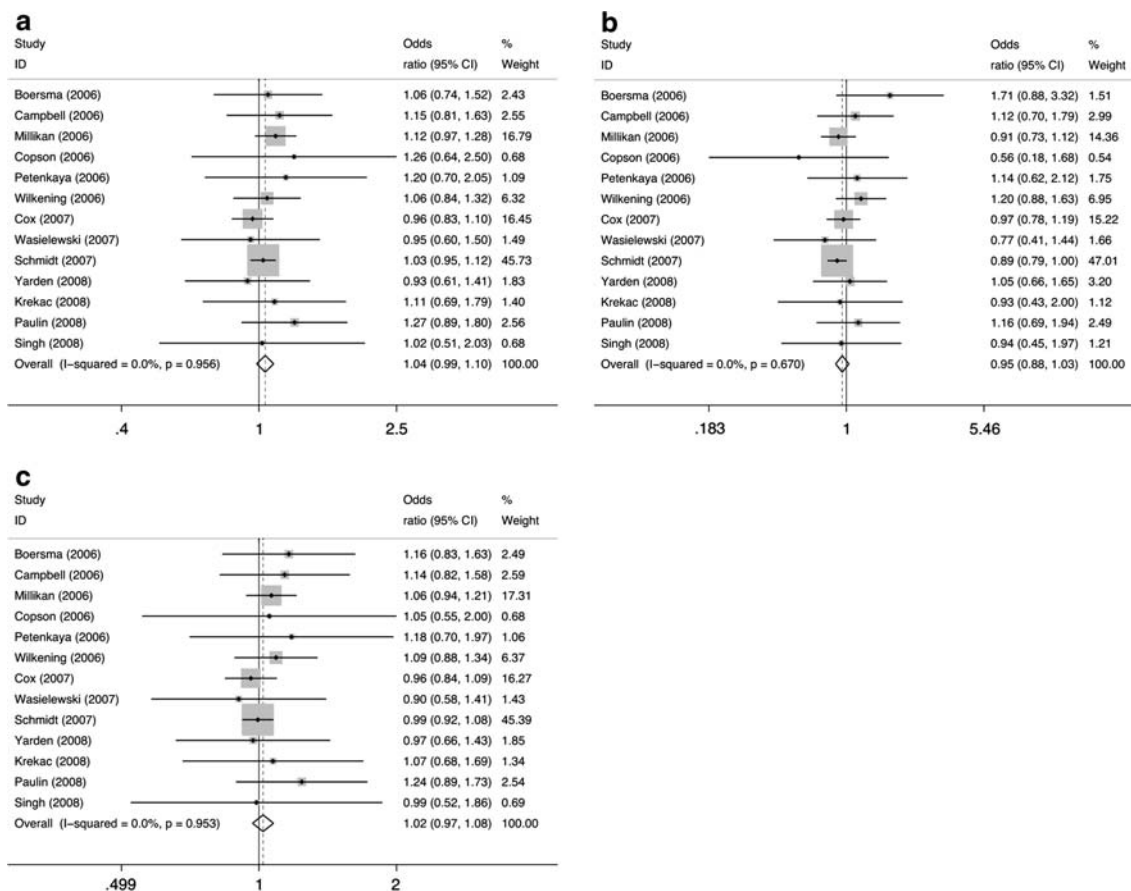


**Fig. 2** Forest plot for the overall association between MDM2 SNP309 status and breast cancer risk for **a** genotype GT (heterozygous vs. TT), **b** genotype GG (homozygous vs. TT) and **c** the G allele (G allele carriers, i.e. GT plus GG vs. TT). Each study is shown by the

point estimate of the odds ratio (OR) (the size of the square is proportional to the weight of each study) and 95% confidence interval for the OR (extending lines); the pooled OR and 95% confidence interval by fixed-effects calculations are shown by diamonds



**Fig. 3** Forest plot for the subanalysis on Chinese subjects for **a** genotype GT, **b** genotype GG and **c** the G allele



**Fig. 4** Forest plot for the subanalysis on non-Chinese subjects for **a** genotype GT, **b** genotype GG and **c** the G allele

## Discussion

The main message of this meta-analysis is that the association between MDM2 SNP309 and breast cancer is modified by race. MDM2 SNP309 represents a risk factor for breast cancer in Chinese women but not in non-Chinese women. The present results provide substantial improvement in the understanding of the MDM2 SNP309-breast cancer interplay when compared with those presented by Wilkening et al. [22]. The latter had performed a meta-analysis solely on nine case-control studies pertaining to breast cancer and at that time point, it was not possible to reach such conclusions given that only one Chinese study had appeared [8].

An impressive analogy emerges. In the context of lung cancer, MDM2 SNP309 is associated with elevated lung cancer risk in Asian populations but not in European or African groups, according to the results of a recent meta-analysis [27]. It seems, thus, that race is an effect modifier capable of surpassing tissue specific functions.

Concerning the subanalyses on non-Chinese populations, which are the majority of studies published on MDM2 SNP309 and breast cancer, an essentially null association became evident. Indeed, the functional link between MDM2 SNP309 and breast cancer in Caucasian women remains obscure, as its presence has not led to increased MDM2 protein expression; consequently, SNP309 status seems fairly independent from the well-established MDM2 overexpression in breast cancer [28]. Nevertheless, under the light of the present meta-analysis, it would be tempting to anticipate functional and physiological studies exclusively on Chinese women, so as to investigate the possible physiological effects of the polymorphism therein.

This meta-analysis is the first to demonstrate a physiological interaction between an MDM2 polymorphism and an inherent feature. In the context of lung cancer, a meta-analysis has demonstrated that MDM2 SNP309 is capable of interacting with smoking status; specifically, its relationship with lung cancer is stronger for never smokers [29]. On the other hand, studies on breast cancer have not made such a point yet; the putative interactions between MDM2 SNP309 and well-established risk factors such as oral contraceptive use [30] and obesity [31] would be tempting and meaningful targets for future analyses and meta-analyses.

## References

- Brooks CL, Gu W (2006) p53 ubiquitination: Mdm2 and beyond. *Mol Cell* 21:307–315
- Bouska A, Eischen CM (2009) Mdm2 affects genome stability independent of p53. *Cancer Res* 69:1697–1701
- Agrawal A, Yang J, Murphy RF, Agrawal DK (2006) Regulation of the p14ARF-Mdm2-p53 pathway: an overview in breast cancer. *Exp Mol Pathol* 81:115–122
- Bond GL, Hu W, Bond EE, Robins H, Lutzker SG, Arva NC, Bargonetti J, Bartel F, Taubert H, Wuerl P, Onel K, Yip L, Hwang SJ, Strong LC, Lozano G, Levine AJ (2004) A single nucleotide polymorphism in the MDM2 promoter attenuates the p53 tumor suppressor pathway and accelerates tumor formation in humans. *Cell* 119:591–602
- Boersma BJ, Howe TM, Goodman JE, Yfantis HG, Lee DH, Chanock SJ, Ambros S (2006) Association of breast cancer outcome with status of p53 and MDM2 SNP309. *J Natl Cancer Inst* 98:911–919
- Campbell IG, Eccles DM, Choong DY (2006) No association of the MDM2 SNP309 polymorphism with risk of breast or ovarian cancer. *Cancer Lett* 240:195–197
- Millikan RC, Heard K, Winkel S, Hill EJ, Massa B, Mayes L, Williams P, Holston R, Conway K, Edmiston S, de Cotret AR (2006) No association between the MDM2-309 T/G promoter polymorphism and breast cancer in African-Americans or Whites. *Cancer Epidemiol Biomarkers Prev* 15:175–177
- Ma H, Hu Z, Zhai X, Wang S, Wang X, Qin J, Jin G, Liu J, Wei Q, Shen H (2006) Polymorphisms in the MDM2 promoter and risk of breast cancer: a case-control analysis in a Chinese population. *Cancer Lett* 240:261–267
- Copson ER, White HE, Blaydes JP, Robinson DO, Johnson PW, Eccles DM (2006) Influence of the MDM2 single nucleotide polymorphism SNP309 on tumour development in BRCA1 mutation carriers. *BMC Cancer* 6:80
- Petenkaya A, Bozkurt B, Akilli-Ozturk O, Kaya HS, Gur-Deoglu B, Yulug IG (2006) Lack of association between the MDM2-SNP309 polymorphism and breast cancer risk. *Anticancer Res* 26:4975–4977
- Wilkening S, Bermejo JL, Burwinkel B, Klaes R, Bartram CR, Meindl A, Bugert P, Schmutzler RK, Wappenschmidt B, Untch M, Hemminki K, Forsti A (2006) The single nucleotide polymorphism IVS1 + 309 in mouse double minute 2 does not affect risk of familial breast cancer. *Cancer Res* 66:646–648
- Cox DG, Deer D, Guo Q, Tworoger SS, Hankinson SE, Hunter DJ, De Vivo I (2007) The p53 Arg72Pro and MDM2-309 polymorphisms and risk of breast cancer in the nurses' health studies. *Cancer Causes Control* 18:621–625
- Wasielewski M, Nagel JH, Brekelmans C, Klijn JG, van den Ouweland A, Meijers-Heijboer H, Schutte M (2007) MDM2 SNP309 accelerates familial breast carcinogenesis independently of estrogen signaling. *Breast Cancer Res Treat* 104:153–157
- Schmidt MK, Reincke S, Broeks A, Braaf LM, Hogervorst FB, Tollenaar RA, Johnson N, Fletcher O, Peto J, Tommiska J, Blomqvist C, Nevanlinna HA, Healey CS, Dunning AM, Pharoah PD, Easton DF, Dork T, Van't Veer LJ (2007) Do MDM2 SNP309 and TP53 R72P interact in breast cancer susceptibility? A large pooled series from the breast cancer association consortium. *Cancer Res* 67:9584–9590
- Yarden RI, Friedman E, Metsuyanim S, Olender T, Ben-Asher E, Papa MZ (2008) MDM2 SNP309 accelerates breast and ovarian carcinogenesis in BRCA1 and BRCA2 carriers of Jewish-Ashkenazi descent. *Breast Cancer Res Treat* 111:497–504
- Lum SS, Chua HW, Li H, Li WF, Rao N, Wei J, Shao Z, Sabapathy K (2008) MDM2 SNP309 G allele increases risk but the T allele is associated with earlier onset age of sporadic breast cancers in the Chinese population. *Carcinogenesis* 29:754–761
- Krekac D, Brozkova K, Knoflickova D, Hrstka R, Muller P, Nenuil R, Vojtesek B (2008) MDM2SNP309 does not associate

- with elevated MDM2 protein expression or breast cancer risk. *Oncology* 74:84–87
18. Paulin FE, O'Neill M, McGregor G, Cassidy A, Ashfield A, Ali CW, Munro AJ, Baker L, Purdie CA, Lane DP, Thompson AM (2008) MDM2 SNP309 is associated with high grade node positive breast tumours and is in linkage disequilibrium with a novel MDM2 intron 1 polymorphism. *BMC Cancer* 8:281
  19. Sun YF, Leu JD, Chen SM, Lin IF, Lee YJ (2009) Results based on 124 cases of breast cancer and 97 controls from Taiwan suggest that the single nucleotide polymorphism (SNP309) in the MDM2 gene promoter is associated with earlier onset and increased risk of breast cancer. *BMC Cancer* 9:13
  20. Singh V, Rastogi N, Mathur N, Singh K, Singh MP (2008) Association of polymorphism in MDM-2 and p53 genes with breast cancer risk in Indian women. *Ann Epidemiol* 18:48–57
  21. Hu Z, Jin G, Wang L, Chen F, Wang X, Shen H (2007) MDM2 promoter polymorphism SNP309 contributes to tumor susceptibility: evidence from 21 case–control studies. *Cancer Epidemiol Biomarkers Prev* 16:2717–2723
  22. Wilkening S, Bermejo JL, Hemminki K (2007) MDM2 SNP309 and cancer risk: a combined analysis. *Carcinogenesis* 28: 2262–2267
  23. Higgins JP, Thompson SG, Deeks JJ, Altman DG (2003) Measuring inconsistency in meta-analyses. *BMJ* 327:557–560
  24. Begg CB, Mazumdar M (1994) Operating characteristics of a rank correlation test for publication bias. *Biometrics* 50:1088–1101
  25. Nechushtan H, Hamburger T, Mendelson S, Kadouri L, Sharon N, Pikarsky E, Peretz T (2009) Effects of the single nucleotide polymorphism at MDM2 309 on breast cancer patients with/without BRCA1/2 mutations. *BMC Cancer* 9:60
  26. Bond GL, Hirshfield KM, Kirchhoff T, Alexe G, Bond EE, Robins H, Bartel F, Taubert H, Wuerl P, Hait W, Toppmeyer D, Offit K, Levine AJ (2006) MDM2 SNP309 accelerates tumor formation in a gender-specific and hormone-dependent manner. *Cancer Res* 66:5104–5110
  27. Gui XH, Qiu LX, Zhang HF, Zhang DP, Zhong WZ, Li J, Xiao YL (2009) MDM2 309 T/G polymorphism is associated with lung cancer risk among Asians. *Eur J Cancer* 45(11):2023–2026
  28. Bueso-Ramos CE, Manshouri T, Haidar MA, Yang Y, McCown P, Ordonez N, Glassman A, Sneige N, Albitar M (1996) Abnormal expression of MDM-2 in breast carcinomas. *Breast Cancer Res Treat* 37:179–188
  29. Bai J, Dai J, Yu H, Shen H, Chen F (2009) Cigarette smoking, MDM2 SNP309, gene–environment interactions, and lung cancer risk: a meta-analysis. *J Toxicol Environ Health A* 72:677–682
  30. Casey PM, P.M. Cerhan PM, Pruthi S (2008) Oral contraceptive use and risk of breast cancer. *Mayo Clin Proc* 83:86–90; quiz 90–81
  31. Cleary MP, Grossmann ME (2009) Minireview: obesity and breast cancer: the estrogen connection. *Endocrinology* 150:2537–2542