



HAL
open science

Generalized Spinfoams

You Ding, Muxin Han, Carlo Rovelli

► **To cite this version:**

You Ding, Muxin Han, Carlo Rovelli. Generalized Spinfoams. Physical Review D, 2011, 83, pp.124020.
hal-00534768

HAL Id: hal-00534768

<https://hal.science/hal-00534768>

Submitted on 25 Sep 2023

HAL is a multi-disciplinary open access archive for the deposit and dissemination of scientific research documents, whether they are published or not. The documents may come from teaching and research institutions in France or abroad, or from public or private research centers.

L'archive ouverte pluridisciplinaire **HAL**, est destinée au dépôt et à la diffusion de documents scientifiques de niveau recherche, publiés ou non, émanant des établissements d'enseignement et de recherche français ou étrangers, des laboratoires publics ou privés.

Generalized Spinfoams

You Ding,¹ Muxin Han,^{1,2} and Carlo Rovelli¹

¹*Centre de Physique Théorique*, CNRS-Luminy Case 907, F-13288 Marseille, EU*

²*Max-Planck-Institut für Gravitationsphysik, Am Mühlenberg 1, D-14476 Golm, EU*

(Dated: November 2, 2018)

We reconsider the spinfoam dynamics that has been recently introduced, in the generalized Kamiński-Kisielowski-Lewandowski (KKL) version where the foam is not dual to a triangulation. We study the Euclidean as well as the Lorentzian case. We show that this theory can still be obtained as a constrained BF theory satisfying the simplicity constraint, now discretized on a general oriented 2-cell complex. This constraint implies that boundary states admit a (quantum) geometrical interpretation in terms of polyhedra, generalizing the tetrahedral geometry of the simplicial case. We also point out that the general solution to this constraint (imposed weakly) depends on a quantum number r_f in addition to those of loop quantum gravity. We compute the vertex amplitude and recover the KKL amplitude in the Euclidean theory when $r_f=0$. We comment on the eventual physical relevance of r_f , and the formal way to eliminate it.

I. INTRODUCTION

The spinfoam formalism [1–3] offers a formulation of the dynamics of quantum gravity strictly related to loop quantum gravity (LQG)[4–6]. The precise relation between the two approaches is well-understood in 3 dimensions [7], and under study in 4 dimensions [8].

The spinfoam theory introduced in [9, 10] can be derived starting from the Plebanski formulation of GR [11] (including the Barbero-Immirzi parameter γ), and defined as a BF theory discretized on a simplicial cellular complex and constrained by the so called simplicity constraint. The constraint can be imposed using the master-constraint technique [9, 12], or, more simply, using the Gupta–Bleuler procedure, namely asking the matrix elements of the constraint to vanish on physical states [13]. The resulting model has remarkable properties: (i) the boundary states have a geometrical interpretation in terms of quantum tetrahedral geometry [3, 14]; (ii) there are strong indications that the semiclassical behavior of the theory matches classical general relativity [15–18], thus correcting difficulties of earlier models [19]; and (iii) the boundary kinematics is strictly related to that of LQG [9, 13].

The relation with LQG, however, is limited by the fact that the simplicial-spinfoam boundary states include only four-valent spin networks. This is a drastic reduction of the LQG state space. In [20], Kamiński, Kisielowski, and Lewandowski (KKL) have considered a generalization of the spinfoam formalism to spin networks of arbitrary valence, and have constructed a corresponding vertex amplitude. This generalization provides truncated transition amplitudes between *any* two LQG states [1], thus correcting the limitation of the relation between the

model and LQG. This generalization, on the other hand, gives rise to several questions. The KKL vertex is obtained via a “natural” mathematical generalization of the simplicial Euclidean vertex amplitude. Is the resulting vertex amplitude still related to constrained BF theory (and therefore to GR)? In particular, do KKL states satisfy the simplicity constraint? Can we associate to these states a geometrical interpretation similar to the one of the simplicial case? Can the construction be extended to the physically relevant Lorentzian case?

Here we answer several of these questions. We show that it is possible to start from a discretization of BF theory on a general 2-cell complex, and impose the same boundary constraints that one impose in the simplicial case (simplicity and closure). Remarkably, on the one hand, they reduce the BF vertex amplitude to a (generalization of) the KKL vertex amplitude, in the Euclidean case studied by KKL. On the other hand, a theorem by Minkowski [21] guarantees that these constraints are precisely those needed to equip the classical limit of each truncation of the boundary state space to a finite graph, with a geometrical interpretation, which turns out to be in terms of polyhedra [22].

These results reinforce the overall coherence of the generalized spinfoam formalism.

Surprisingly, however, the state space defined by imposing the simplicity constraint weakly is larger than the one of quantum gravity. It includes one additional degree of freedom, described by a new quantum number r_f .¹ The quantum number r_f affects non-trivially both the face amplitude and the vertex amplitude of the model. The quantum number r_f is frozen if in addition to the weak imposition of the (linear) simplicity constraint,

*Unité mixte de recherche (UMR 6207) du CNRS et des Universités de Provence (Aix-Marseille I), de la Méditerranée (Aix-Marseille II) et du Sud (Toulon-Var); laboratoire affilié à la FRUMAM (FR 2291).

¹ The enlargement is not an effect from the generalization to arbitrary 2-cell complexes. The Hilbert space is enlarged also in the simplicial case, compared with the state space defined in [9]. This additional quantum number was first noticed by Sergei Alexandrov [26].

we also impose strongly a diagonal quadratic constraint. With a suitable operator ordering of this constraint, the state space can be reduced back down to the LQG state space.

Does the r_f quantum number have physical relevance? If we take the principle that the quantum theory we are seeking has the same number of degrees of freedom as the classical theory, then the answer is negative. This principle indicates that the appropriate way of imposing the constraints is the one that gets rids of the extra states. However, we think it is nevertheless interesting to keep in mind the existence of these additional solutions to the weak simplicity constraints. We comment more on this in the conclusion.

An outline for the article is as follows. In Section II, we review the spinfoam representation of the BF partition function on a general complex, and we discuss the structure of the boundary Hilbert space of BF theory. In Section III, we implement the geometric constraint to the BF boundary Hilbert space. After solving the constraint weakly, two new boundary Hilbert space are constructed for both the Euclidean and the Lorentzian theory. We also show that the new boundary Hilbert space carries a representation of quantum polyhedral geometry. In Section IV, we derive the new spinfoam vertex amplitude and face amplitude from the new boundary Hilbert space. In Section VI, we conclude and point out the open issues. We assume that the Barbero-Immirzi parameter γ is positive.

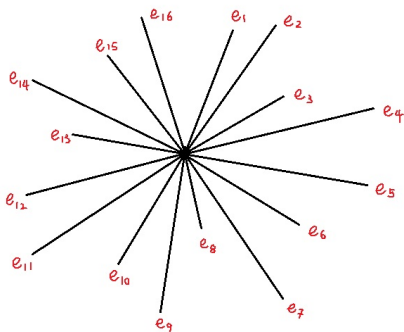


FIG. 1: A generalized spinfoam vertex.

II. SPINFOAM REPRESENTATION OF BF THEORY

We start with a brief review of the construction of the BF spinfoam partition function and the structure of its boundary Hilbert space [23], which is the starting point of the definition of the theory. The BF partition function is formally defined by the path integral

$$Z_{BF} := \int DA DB \exp\left(i \int_M \text{tr}(B \wedge F[A])\right) \quad (1)$$

where B is a 2-form field on the manifold M , with values in the Lie algebra \mathfrak{g} of a group G and F is the curvature of the G -connection A . Here we take the internal gauge group G to be either $G = Spin(4)$ (for the Euclidean case) or $G = SL(2, \mathbb{C})$ (for the Lorentzian case). A formal integration over B gives

$$Z_{BF} = \int DA \prod_{x \in M} \delta(F[A]) \quad (2)$$

which is an integration over the flat connections. In order to make sense of the formal path integral (2), we discretize it. However, instead of discretizing the path integral on an oriented 2-complex dual to a simplicial decomposition of the manifold M as is usually done, we introduce here an arbitrary oriented 2-complex \mathcal{K} (as in [20]) with or without boundary.

We take a combinatorial definition of an oriented 2-complex. An oriented 2-complex $\mathcal{K} := (V(\mathcal{K}), E(\mathcal{K}), F(\mathcal{K}))$ consists of sets of *vertices* $v \in V(\mathcal{K})$, *edges* $e \in E(\mathcal{K})$ and *faces* $f \in F(\mathcal{K})$, equipped with a *boundary relation* ∂ associating an ordered pair of vertices $(s(e), t(e))$ (“source” and “target”) to each edge e and a finite sequence of edges $\{e_k^{\epsilon_{kf}}\}_{k=1, \dots, n}$ to each face f , with $t(e_k) = s(e_{k+1})$, $t(e_n) = s(e_1)$ and $\epsilon_{ef} = \pm 1$; here we call e^{-1} the edge with reversed order of e . We let ∂f denote the cyclically ordered set of edges that bound the face f , or (if it is clear from the context) the cyclically ordered set of vertices that bound the boundary edges of f . We also write ∂v to indicate the set of edges bounded by v , and of faces that have v in their boundary. Similarly, we write ∂e to indicate the set of the faces bounded by e . When $e \in \partial f$, we define $\epsilon_{ef} = 1$ if the orientation of e is consistent with the one induced by the face f and $\epsilon_{ef} = -1$ if it is not.

The boundary graph $\gamma = \partial \mathcal{K}$ is a 1-cell subcomplex of \mathcal{K} . An edge $e \in E(\mathcal{K})$ is an edge of the boundary graph γ if and only if it is contained in only one face, otherwise it is an internal edge. A vertex $v \in V(\mathcal{K})$ is a vertex of the boundary graph γ if and only if it is contained in exactly one internal edge of \mathcal{K} , otherwise it is an internal vertex of \mathcal{K} . We assume boundary vertices and boundary edges to form a graph, which is the boundary of the two-complex.

We introduce also the notion of the boundary graph γ_v of a single vertex v . This is the graph whose nodes are the edges e in ∂v and whose links are the faces f in ∂v . The boundary relation defining the graph is the relation $e \in \partial f$ and the orientation of the links is the one induced by the faces. The graph γ_v can be visualized as the intersection between the two complex and a small sphere surrounding the vertex.

We discretize the BF partition function on the oriented 2-cell complex \mathcal{K} , by replacing the continuous field A with the assignment of an element of G to each edge. By convention, $g_{e^{-1}} := g_e^{-1}$. Then equation (2) becomes

$$Z_{BF}(\mathcal{K}) = \int dg_e \prod_f \delta\left(\prod_{e \in \partial f} g_e^{\epsilon_{ef}}\right), \quad (3)$$

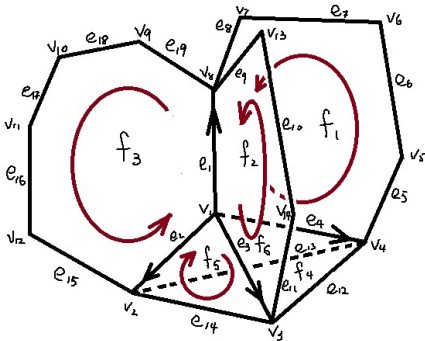


FIG. 2: An oriented 2-cell complex $\mathcal{K} := (F(\mathcal{K}), E(\mathcal{K}), V(\mathcal{K}))$, where $F(\mathcal{K}) = \{f_1, \dots, f_6\}$, $E(\mathcal{K}) = \{e_1, \dots, e_{19}\}$, $V(\mathcal{K}) = \{v_1, \dots, v_{14}\}$. v_1 is internal vertex, and e_1, e_2, e_3, e_4 are internal edges, while all other edges and vertices belong to the boundary graph $\gamma = \partial\mathcal{K}$.

where dg_e is the product over all the edges of the Haar measure, the product over f is over all the faces of \mathcal{K} and the product over e is the product over the edges bounding the face f of the group element associated to these edges, ordered by the orientation of the face. This is the partition function of BF theory.

We now express this partition function as a sum over representations and intertwiners. For this, it is convenient to treat the Euclidean and Lorentzian cases separately.

A. Spin(4) BF Theory

Consider the Euclidean case $G = Spin(4)$. The delta function on $Spin(4)$ can be expanded in irreducible representations

$$\delta(U) = \sum_{\rho} \dim(\rho) \chi^{\rho}(U) \quad (4)$$

where $\rho = (j^+, j^-)$ labels the unitary irrep of $Spin(4)$, $\dim(\rho) = (2j^+ + 1)(2j^- + 1)$ is the dimension of the representation space, and χ_{ρ} is the character of the representation ρ . Irreducible representations can also be conveniently labelled with the two half integers $k = j^+ + j^-$ and $p = j^+ - j^-$.

Expanding the delta function in representations, (2) becomes

$$\begin{aligned} Z_{BF}(\mathcal{K}) &= \int dg_e \prod_f \left(\sum_{\rho} \dim(\rho) \chi^{\rho}(U_f) \right) \\ &= \sum_{\rho_f} \int dg_e \prod_f \dim(\rho_f) \chi^{\rho_f}(U_f). \end{aligned} \quad (5)$$

This is the expression for the spinfoam amplitude in the group element basis. Let us now translate this into the more common representations-intertwiners basis.

This can be obtained by performing the integrals, precisely as in the simplicial case. We have one integration per edge, of the form

$$K_{\mathbf{M}, \mathbf{N}} = \int dg_e \prod_{f \in \partial e} \Pi_{M_f N_f}^{\rho_f}(g_e^{e_{ef}}) \quad (6)$$

where $\Pi_{MN}^{\rho}(g)$ is the matrix element of the $Spin(4)$ representation ρ ; $\mathbf{M} = M_{f_1}, \dots, M_{f_n}$ is a multi-index; and the product is over the n faces bounded by e (including repeated faces). In the case where \mathcal{K} is dual to a simplicial complex, $n=4$. It is immediate to see that $K_{\mathbf{M}, \mathbf{N}}$ is the operator in the tensor product $(\otimes_{f_{out}} \rho_f) \otimes (\otimes_{f_{in}} \rho_f^{\dagger})$ of the ρ_f representation spaces (where f_{in} are the faces with the same orientation as e and f_{out} are the faces with opposite orientation.) that projects on its invariant subspace

$$\mathcal{H}_e = \text{Inv} \left[\left(\otimes_{f_{out}} \rho_f \right) \otimes \left(\otimes_{f_{in}} \rho_f^{\dagger} \right) \right]. \quad (7)$$

Let I label an orthonormal basis in \mathcal{H}_e . (These are called intertwiners.) Then

$$K_{\mathbf{M}, \mathbf{N}} = \sum_I I_{\mathbf{M}} I_{\mathbf{N}}^{\dagger}. \quad (8)$$

For each internal edge e , the two intertwiners are associated to the two vertices bounding the edge (see Figure 3), in the sense that their indices are contracted with the other intertwiners at the same vertex. The result of the

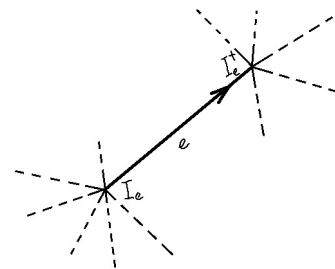


FIG. 3: Assign I_e to the begin point and assign I_e^{\dagger} to the end point of an internal edge e .

integration is therefore

$$Z_{BF}(\mathcal{K}) = \sum_{\rho_f} \prod_f \dim(\rho_f) \sum_{I_e} \prod_v A_v(\rho_f, I_e). \quad (9)$$

Here the sum over I_e is over the assignment of one intertwiner to each edge e of \mathcal{K} . The product over v is over the vertices of \mathcal{K} . The vertex amplitude $A_v(\rho_f, I_e)$ is defined as follows. Say at the vertex $v \in V(\mathcal{K})$ there are n outgoing edges e_{out} and m incoming edges e_{in} . Then

$$A_v(\rho_f, I_e) := \text{tr} \left(\otimes_{e_{out}} I_{e_{out}} \otimes \otimes_{e_{in}} I_{e_{in}}^{\dagger} \right) \quad (10)$$

The trace in eq.(10) is precisely the spinfoam trace defined in [20]. The contractions between the intertwiners in the spinfoam trace could be described by the follows: For each edge e each index M_i is associated with a face f bounded by the edge e . The trace is defined by contracting the two indices associated with the same face of the two intertwiners corresponding to the two edges bounding f . This can be easily seen to give the character χ^ρ of (5). In the special case when the complex \mathcal{K} is dual to a simplicial complex, there are 5 internal edges joining at v and each pair of edges determines a 2-face, the spinfoam trace is nothing but the Spin(4) 15-j symbol.

Alternatively, the BF partition function can also be expressed in the form [20]

$$Z_{BF}(\mathcal{K}) = \sum_{\rho_f} \prod_f \dim(\rho_f) \operatorname{tr} \left(\bigotimes_{e \in E(\mathcal{K})} P_e \right) \quad (11)$$

where $P_e := \sum_{I_e} I_e \otimes I_e^\dagger$ is understood as the projection operator projecting from the product of the representations on the 2-faces bounded by e to its invariant subspace. And the index contractions in $\operatorname{tr} \left(\bigotimes_{e \in E(\mathcal{K})} P_e \right)$ are the contractions between intertwiners, as above.

All gravitational spinfoam theories have this same structure.

B. $SL(2, \mathbb{C})$ BF Theory

Let now $G = SL(2, \mathbb{C})$. The derivation of the spinfoam representation of $SL(2, \mathbb{C})$ is as above, with a few differences. $SL(2, \mathbb{C})$ unitary irreps (in the principle series) can be labelled by the same quantum numbers (k, p) as the $SO(4)$ ones, but now p is a real number [31]. The unitary irreps of $SL(2, \mathbb{C})$ are infinite dimensional and can be decomposed into an infinite direct sum of $SU(2)$ irreps, i.e.

$$V^{(k,p)} = \bigoplus_{j=k}^{\infty} V_j^{(k,p)} \quad (12)$$

where $V_j^{(k,p)} \sim V_j$ is the carrier space of the spin j representation of $SU(2)$. This decomposition provides a convenient basis $|j, m\rangle$ in $V^{(k,p)}$, obtained diagonalizing L^2 and L^z of $SU(2)$. In this basis, for $g \in SL(2, \mathbb{C})$, we write the representation matrices on $V^{(k,p)}$ as $\Pi_{jm, j'm'}^{(k,p)}(g)$ where $j \in \{k, k+1, \dots, \infty\}$ and $m \in \{-j, \dots, j\}$. As one might expect from the fact that p is a continuous label, the representation ‘‘matrix element’’ $\Pi_{jm, j'm'}^{(k,p)}$ is distributional on the Hilbert space $L^2[SL(2, \mathbb{C})]$ defined by the Haar measure. These matrix elements form a generalized orthonormal basis and define a Fourier-like transform. That is, for any square integrable function

$f(g)$ on $SL(2, \mathbb{C})$,

$$f(g) = \frac{1}{8\pi^4} \sum_k \int_{-\infty}^{+\infty} dp (k^2 + p^2) \operatorname{tr} \left[F(k, p) \Pi^{(k,p)}(g^{-1}) \right]$$

$$F(k, p) = \int_{SL(2, \mathbb{C})} f(g) \Pi^{(k,p)}(g) d\mu_H(g) \quad (13)$$

which is known as Plancherel theorem [31]. Accordingly, we have an identity for Fourier decomposition of delta function on $SL(2, \mathbb{C})$

$$\delta(g) = \frac{1}{8\pi^4} \sum_k \int_{-\infty}^{+\infty} \operatorname{tr} \left[\Pi^{(k,p)}(g) \right] (k^2 + p^2) dp \quad (14)$$

in analogy with eq.(4). Proceeding as in the Euclidean case, we find

$$Z_{BF}(\mathcal{K}) = \int \prod_e dg_e \prod_f \delta(U_f) \quad (15)$$

$$= \sum_{k_f} \int dp_f \prod_f (k_f^2 + p_f^2) \int dg_e \prod_f \operatorname{tr} \left[\Pi^{(k_f, p_f)}(U_f) \right]$$

As in the euclidean case, each g_e integral is of the form

$$K_{\mathbf{j}\mathbf{m}, \mathbf{j}'\mathbf{m}'} = \int dg_e \prod_{f \in \partial e} \Pi_{j_f m_f, j'_f m'_f}^{(k_f, p_f)}(g_e^{\epsilon_{ef}}). \quad (16)$$

Formally, this is still a projector on the invariant component of the tensor product of n irreducibles. However, since now one of the two Casimirs has continuous spectrum p , then the trivial representation $p = k = 0$ is not a proper subspace of the tensor product, but only a generalized subspace. This does not forbid us to introduce an orthonormal basis of intertwiners I in this subspace, as we did in the Euclidean case, and write

$$K_{\mathbf{j}\mathbf{m}, \mathbf{j}'\mathbf{m}'} = \sum_I I_{\mathbf{j}\mathbf{m}} I_{\mathbf{j}'\mathbf{m}'}^\dagger \quad (17)$$

but we have to remember that the intertwiners are generalized vectors. Using this, we can formulate the spinfoam representation of $SL(2, \mathbb{C})$ BF theory in the same way as we did for Spin(4) theory.

- The Fourier decomposition of the $SL(2, \mathbb{C})$ delta function assigns an $SL(2, \mathbb{C})$ irrep labeled by (k_f, p_f) to each face f .
- Eq.(16) assigns an $SL(2, \mathbb{C})$ intertwiner I^e to each source of each edge e , and a dual intertwiner I^{e^\dagger} to its target.
- At each vertex v with n outgoing edges $e_1^{out}, \dots, e_n^{out}$ and m incoming edges $e_1^{in}, \dots, e_m^{in}$, the intertwiners $I^{e^{out}}$ and $I^{e^{in\dagger}}$ are contracting on their \mathbf{j}, \mathbf{m} and \mathbf{j}', \mathbf{m}' indices, according to how the faces neighboring the vertex are bounded by the

edges. The result of this contraction gives the spin-foam vertex amplitude

$$A_v\left((k, p)_f, I_e\right) := \text{tr} \left(\left(\bigotimes_{e_{out}} I_e \right) \otimes \left(\bigotimes_{e_{in}} I_e^\dagger \right) \right) \quad (18)$$

- Finally the partition function of $SL(2, \mathbb{C})$ BF theory is

$$Z_{BF} = \sum_{k_f I_e} \int dp_f \prod_f (k_f^2 + p_f^2) \prod_v A_v\left((k, p)_f, I_e\right) \quad (19)$$

This expression, however, is ill defined, due to the fact that the intertwiners are generalized vectors, and the trace (18) may diverge. This issue is addressed and answered in [32], where it is shown that the source of the divergence is a redundant integral over $SL(2, \mathbb{C})$ in the definition of A_v . It is then immediate to regularize A_v by removing one $SL(2, \mathbb{C})$ integration per each vertex. The resulting amplitude is proven in [32] to be finite, except for some particular pathological vertices, which we exclude here for simplicity. In what follows we always assume that the vertex amplitude is so renormalized.

C. Boundary Hilbert Space

Let us rewrite the partition function (3) in a slightly different form. Split each edge e bounded by the vertices v and v' into two half edges (ev) and (ev') , and associate a group element g_{ev} to each half edge (oriented towards the vertex). Then replace each integral dg_e with the two integrals $dg_{ev}, dg_{ev'}$. This gives

$$Z_{BF}(\mathcal{K}) = \int dg_{ev} \prod_f \delta\left(\prod_{e \in \partial f} (g_{ev}^{-1} g_{ev'})^{\epsilon_{ef}}\right), \quad (20)$$

where there is one integration per each couple vertex/adjacent-edge. Next, let v be a vertex in the boundary of the face f . For each such couple fv , introduce a group variable g_{fv} . Then (20) can be rewritten in the form

$$Z_{BF}(\mathcal{K}) = \int dg_{fv} dg_{ev} \prod_f \delta\left(\prod_{v \in \partial f} g_{fv}\right) \prod_{fv} \delta(g_{fv}^{-1} g_{ev} g_{e'v}^{-1}) \quad (21)$$

where e and e' are the two edges in the boundary of f that meet at v , ordered by the orientation of f . This can be rewritten in the form

$$Z_{BF}(\mathcal{K}) = \int dg_{fv} \prod_f \delta\left(\prod_{v \in \partial f} g_{fv}\right) \prod_v A_v(g_{fv}) \quad (22)$$

where the vertex amplitude $A_v(g_f)$ is defined by

$$A_v(g_f) = \int \prod_{e \in \partial v} dg_e \prod_{f \in \partial v} \delta(g_{ef} g_f g_{e'f}^{-1}) \quad (23)$$

is a function of one group element for each face in the boundary of v . Here the integral is over one group element per each edge in the boundary of the vertex v and, as before, e and e' are the two edges in the boundary of f that meet at v . This is the ‘‘holonomy’’ form of the partition function [30].

Let $|F_v|$ be the number of links f of the graph γ_v , namely the number of faces f in ∂v . The vertex amplitude (23) is a function in

$$\mathcal{H}_{\gamma_v} = L_2[G^{|F_v|}]. \quad (24)$$

We call this the (non-gauge invariant) boundary Hilbert space of the vertex v . It is easy to see that the vertex amplitude (23) is an element of this space. More precisely, it is an element of the (possibly generalized) subspace

$$\mathcal{K}_{\gamma_v} = L_2[G^{|F_v|}/G^{|E_v|}] \quad (25)$$

where $|E_v|$ is the number of nodes of γ_v , namely the number of edges in ∂v , formed by the states invariant to the gauge transformation

$$\psi(g_e) = \psi(\Lambda_{s_e} g_e \Lambda_{t_e}) \quad (26)$$

where $\Lambda \in G$ and s_e and t_e are the source and target of e .

A moment of reflection shows also that (10) and (18) are simply the amplitude (23) expressed in the standard spin network basis of \mathcal{K}_{γ_v} . Let us now study the boundary space \mathcal{H}_{γ_v} in more detail. (It is convenient to consider the non-gauge-invariant Hilbert space \mathcal{H}_{γ_v} , besides the gauge invariant one because the expressions of geometric constraints will not be gauge invariant, thus they can only be represented as operators on \mathcal{H}_{γ_v} .)

The natural derivative operator defined on the Hilbert space $L_2[G]$ is the left invariant derivative that generates the right G action:

$$J^{IJ} \psi(g) = \left. \frac{d}{d\alpha} \psi(e^{\alpha T^{IJ}} g) \right|_{\alpha=0} \quad (27)$$

where T^{IJ} ($I, J = 0, \dots, 3$) is a standard Lie algebra generator of $Lie(G)$.

Fix an $SU(2)$ subgroup of G , and choose a basis in $Lie(G)$ such that the direction $I = 0$ is preserved by $SU(2)$. Then we can split the six generators T^{IJ} of $Lie(G)$ into 3 rotation generators and 3 boost generators. Accordingly, we define $(i, j, k = 1, 2, 3)$

$$L^i := \frac{1}{2} \epsilon^i_{jk} J^{jk}, \quad K^i := J^{0i} \quad (28)$$

which have the standard commutation relations

$$[L^i, L^j] = \epsilon^{ij}_k L^k, \quad (29)$$

$$[K^i, K^j] = s \epsilon^{ij}_k L^k, \quad (30)$$

$$[K^i, L^j] = \epsilon^{ij}_k K^k \quad (31)$$

where $s = +1$ for $Spin(4)$ and $s = -1$ for $SL(2, \mathbb{C})$.

We denote by J_f^{IJ} the left invariant derivative operator acting on the variable g_f of $\psi(g_f) \in \mathcal{H}_{\gamma_v}$. Notice that the right invariant vector field

$$R^{IJ}\psi(g) = \frac{d}{d\alpha}\psi(ge^{\alpha T^{IJ}})\Big|_{\alpha=0} \quad (32)$$

satisfies $R^{IJ}\psi(g) = J^{IJ}\psi(g^{-1})$. Therefore

$$J_{f^{-1}}^{IJ} = R_f^{IJ}. \quad (33)$$

The bivector operators J_f^{IJ} have a physical interpretation in terms of the BF theory we started from. They are the quantum operators that quantize the discretized version of the 2-form field B^{IJ} , restricted to a 3-dimensional boundary. The reason for this is the follows: Classically the Hamiltonian analysis of BF theory can be carried out [33]. The resulting non-vanishing Poisson bracket reads

$$\left\{ \epsilon^{abc} B_{abIJ}(x), A_d^{KL}(x') \right\} = \delta_d^c \delta_{[I}^K \delta_{J]}^L \delta^3(x, x') \quad (34)$$

where $a, b, c = 1, 2, 3$, x and x' belong to a 3-dimensional spatial manifold \mathcal{S} . These canonical conjugate variables can be discretized in analogy with Hamiltonian lattice gauge theory. Given a graph γ imbedded in \mathcal{S} , there exists a 2-cell complex dual to the graph γ , such that given a link f in the graph there is a unique 2-face S_f dual to the link f . This 2-cell complex defines a polyhedral decomposition of the spatial manifold σ . With this setting, we associate a group variable $g_f \in G$ to each link f , and associate a Lie algebra variable B_f^{IJ} to each S_f (the Lie algebra variables are also labeled by f because of the 1-to-1 correspondence between links and 2-faces). The Poisson algebra of these discretized variables has the following standard expression

$$\begin{aligned} \left\{ g_f, g_{f'} \right\} &= 0 \\ \left\{ B_f^{IJ}, g_{f'} \right\} &= \delta_{ff'} T^{IJ} g_f \\ \left\{ B_f^{IJ}, B_{f'}^{KL} \right\} &= \delta_{ff'} f^{IJ, KL}{}_{MN} B_f^{MN} \end{aligned} \quad (35)$$

where $f^{IJ, KL}{}_{MN}$ denotes the structure constant of $Lie(G)$. In our case, if we consider our boundary graph γ_v and abstractly define the above Poisson algebra on γ_v , we find that the bivector operator J_f^{IJ} for each oriented link f (as a right invariant vector) is the quantum operator representing the Lie algebra variable B_f^{IJ} (up to $-\hbar$), because of the commutation relation between J_f^{IJ} and g_f on the boundary Hilbert space.

III. BOUNDARY QUANTUM GEOMETRY

We now consider a modification of BF theory. The modification is obtained by restricting the boundary space \mathcal{H}_{γ_v} by imposing a certain constraint. Let us first define this constraint and then discuss the consequences and the motivation of imposing it.

A. Geometric Constraints

Consider a vertex v and its boundary graph γ_v . For each link f , consider the Lie algebra element Σ given by

$$B_f = *\Sigma_f + \frac{1}{\gamma}\Sigma_f \quad (36)$$

where the star indicates the Hodge dual in the Lie algebra. Consider a node e of the boundary graph γ_v , and let $f \in \partial e$ be all oriented away from e . Then define

1. Simplicity Constraint: There exists a unit vector $(n_e)_I$ for each e such that, for all $f \in \partial e$

$$(n_e)_I *\Sigma_f^{IJ} = 0. \quad (37)$$

2. Closure Constraint:

$$\sum_{f \in \partial e} \Sigma_f^{IJ} = 0. \quad (38)$$

These are the two constraints on which we focus. The main motivation for considering these constraints is the fact that the action of general relativity in the Holst formulation can be written in the form

$$S_{GR}[e, \omega] = \int B \wedge F[\omega] \quad (39)$$

where ω is an $SL(2, \mathbb{C})$ connection,

$$B = *\Sigma + \frac{1}{\gamma}\Sigma \quad (40)$$

and

$$\Sigma^{IJ} = e^I \wedge e^J \quad (41)$$

where e^I is the tetrad one form. The restriction $\Sigma_f^{IJ}|_{\mathcal{B}}$ of Σ to any space-like boundary \mathcal{B} satisfies the conditions:

$$n_I \Sigma^{IJ}|_{\mathcal{B}} = 0 \quad (42)$$

where n_I is the normal to the boundary and

$$d\Sigma = 0. \quad (43)$$

Equations (36), (37) and (38) can be seen as a discrete consequence of equations (40), (42) and (43). Here, however, we take the discretized equations (36), (37) and (38) as our starting point, and study their consequences. A full discussion on the relation of these equations with continuum general relativity will be considered elsewhere.²

² The Plebanski simplicity constraint implies the constraints given here. However the reverse is not true in general, unless ‘‘shape-matching’’ conditions [22] are imposed on each face shared by two polyhedra. We do not demand such shape-matching conditions here. There is some evidences from the large- j behavior of the generalized spinfoam model that non-shape-matching amplitudes are suppressed in the large- j asymptotic [25].

The key consequences of these constraints is that they allow Σ to determine a classical polyhedral geometry at each node e of the boundary graph γ_v . (See also [22].) This follows from the following

Theorem III.1. *Given an F -valent node e in γ_v , let F bivectors Σ_f satisfy (37) and (38). Then there exists a (possibly degenerate) flat convex polyhedron in \mathbb{R}^3 with F faces, whose face area bivectors coincide with Σ_f^{IJ} . The resulting polyhedron is unique up to rotation and translation.*

Proof: Without loss of generality, we fix the unit vector $(n_e)_I = (1, 0, 0)$ (we call this the time-gauge). The simplicity constraint eq.(37) reduces to

$$\Sigma_f^{0i} = 0. \quad (44)$$

Hence the surviving components of Σ_f^{IJ} are Σ_f^{ij} . We denote these nonvanishing components simply by $\Sigma_f^i = \frac{1}{2}\epsilon^i{}_{jk}B^{jk}$ or $\vec{\Sigma}_f$, in terms of which the closure constraint (38) reads

$$\sum_f \vec{\Sigma}_f = 0. \quad (45)$$

Consider $\vec{\Sigma}_f$ as vectors in \mathbb{R}^3 . Call $|\Sigma_f|$ the length of the 3-vector $\vec{\Sigma}_f$, and let $\vec{n}_f := \vec{\Sigma}_f/|\Sigma_f|$. We first suppose the unit vectors \vec{n}_f are non-coplanar. Then we recall Minkowski's Theorem [21], which states that whenever there are F non-coplanar unit 3-vectors \vec{n}_f and F positive numbers A_f satisfying the condition

$$\sum_f A_f \vec{n}_f = 0, \quad (46)$$

then there exists a convex polyhedron in \mathbb{R}^3 , whose faces have outward normals \vec{n}_f and areas A_f . And the resulting polyhedron is unique up to rotation and translation.³

When we apply Minkowski's theorem to our case, we see that the existence of the unit 3-vectors \vec{n}_f and the lengths $|\Sigma_f|$, as well as the closure constraint eq.(45), together imply that there is a convex polyhedron in \mathbb{R}^3 , unique up to translation and rotation, such that each \vec{n}_f is an outward normal of a face and each $|\Sigma_f|$ is an area of a face. Such a polyhedron can be concretely constructed via Lasserres reconstruction algorithm [34]. Let e^i the natural triad in \mathbb{R}^3 , then the 3-vector $\vec{\Sigma}_f$ can be expressed as an oriented area:

$$\Sigma_f^{ij} = \int_f e^i \wedge e^j. \quad (47)$$

³ Imagine the polyhedron immersed in a homogeneous fluid. Eq.(46) multiplied by the pressure is the sum of the pressure forces acting on the faces, which obviously vanishes.

	2-complex \mathcal{K}	boundary graph γ_v	boundary 3d geometry
e	edge	node	polyhedron
f	face	link	face of polyhedron

TABLE I: The different geometrical interpretations of the labels e and f .

Finally, the case of coplanar unit 3-vectors \vec{n}_f can be obtained as a limit of non-coplanar case, yielding degenerate polyhedra. \square

This geometrical interpretation equips the variables e and f with a further new meaning: they represent, respectively, polyhedra in a 4d space and faces of these polyhedra. See Table 1.

The geometrical interpretation in terms of tetrahedra (and now polyhedra) has raised a lively discussion and it is sometimes unpalatable to the more canonical-oriented part of the community. Part of this discussion is based on misunderstanding. The precise claim here is that if we take the diff-invariant Hilbert space of the theory and we truncate it to a finite graph (so that the observable algebra is also truncated), then the truncated Hilbert space (with its observables algebra) has a classical limit, and this classical limit can be naturally interpreted as describing a collection of polyhedra. This is well consistent with classical general relativity, because classical general relativity as well admits truncations where the geometry is discretized. Also, this is not inconsistent with the continuous picture for the same reason for which the fact that the truncation of Fock space to an n particle Hilbert space describes discrete particles, is not inconsistent with the fact that Fock space itself describes a (quantized) field.

Let us now see how the constraints translate on the variable B given in (36). We have easily:

Simplicity Constraint:

$$C_f^J = n_I \left({}^*B_f^{IJ} - \frac{s}{\gamma} B_f^{IJ} \right) = 0, \quad (48)$$

Closure Constraint:

$$G_e^{IJ} = \sum_{f \in e} B_f^{IJ} = 0, \quad (49)$$

where $s = +1$ for $Spin(4)$ and $s = -1$ for $SL(2, \mathbb{C})$.

Consider a single polyhedron e , with the time-gauge $(n_e)_I = (1, 0, 0, 0)$, and introduce the rotation $L_f^j := \frac{1}{2}\epsilon^j{}_{kl}B_f^{kl}$ and boost $K_f^j := B_f^{0j}$ components of B_f^{IJ} . Then the simplicity constraint (48) becomes simply

$$\vec{K}_f = s\gamma \vec{L}_f; \quad (50)$$

the rotation generators are proportional to the boost generators. The closure constraint (49) can be written as

$$\sum_{f \in \partial e} \vec{L}_f = 0, \quad (51a)$$

$$\text{and } \sum_{f \in \partial e} \vec{K}_f = 0. \quad (51b)$$

where the second, eq.(51b), is redundant, by eq.(50).

Let us now move to the quantum theory, and impose the two constraints (50) and (51a) weakly [9, 13] on the quantum states. This gives

Simplicity Constraint:

$$\langle \psi, \vec{K}_f \psi' \rangle = s\gamma \langle \psi, \vec{L}_f \psi' \rangle. \quad (52)$$

Closure Constraint:

$$\begin{aligned} \sum_{f \in \partial e} \langle \psi, \vec{L}_f \psi' \rangle &= 0 \\ \sum_{f \in \partial e} \langle \psi, \vec{K}_f \psi' \rangle &= 0, \end{aligned} \quad (53)$$

These equations define a subspace $\mathcal{H}_{\gamma_v}^E$ (respectively $\mathcal{H}_{\gamma_v}^L$ in Lorentzian case) of the boundary Hilbert space \mathcal{H}_{γ_v} of BF theory, where the constraints hold weakly. That is, we define $\mathcal{H}_{\gamma_v}^E$ as the subspace where these equations hold for any two states ψ and ψ' in a dense domain, for all nodes s of γ_v .

B. New Boundary Hilbert Space: Euclidean Theory

Let us now construct $\mathcal{H}_{\gamma_v}^E$. Here we first define $\mathcal{H}_{\gamma_v}^E$ and then prove that it solves the geometric constraint. We begin with some preliminaries on the structure of the BF boundary Hilbert space. In the Euclidean theory, this space has the following decomposition

$$\mathcal{H}_{\gamma_v} = \bigotimes_f L^2[\text{Spin}(4)] = \bigotimes_f \left[\bigoplus_{\rho_f} V_{\rho_f} \otimes V_{\rho_f}^* \right]. \quad (54)$$

where V_ρ denote the representation space for the Spin(4) irrep ρ and V_ρ^* is the representation space for the Spin(4) adjoint irrep ρ^* . For each face f , V_{ρ_f} and $V_{\rho_f}^*$ transforms in a gauge transformation (26) under the action of Λ_{s_f} , Λ_{t_f} , where s_f and t_f are the initial and final points of the link f . By regrouping all representations space that transform under the action of the same Λ_e , namely by regrouping the representation spaces associated to the same vertex e of γ_v we can rewrite the decomposition in the form

$$\mathcal{H}_{\gamma_v} = \bigoplus_{\{\rho_f\}} \bigotimes_e \bigotimes_{f \in \partial e} V_{\rho_f}^{(e,f)} \quad (55)$$

where

$$\begin{aligned} V_{\rho_f}^{(s_f, f)} &:= V_{\rho_f} \\ V_{\rho_f}^{(t_f, f)} &:= V_{\rho_f}^* \end{aligned} \quad (56)$$

Therefore the sum over colorings ρ_f associates a representation space

$$\bigotimes_{f \in \partial e} V_{\rho_f}^{(e,f)} \quad (57)$$

to each vertex e . This space can be seen as the quantization of the shapes of a polyhedron with faces having fixed areas, determined by the coloring ρ_f [22].

Since $\text{Spin}(4) \sim \text{SU}(2)_+ \times \text{SU}(2)_-$, a unitary irrep of $\text{Spin}(4)$ is given by a tensor product of two SU(2) irreps. $V_\rho = V_{j^+} \otimes V_{j^-}$ with spins j^+ and j^- . We can characterize ρ by $\rho = (p, k)$, where

$$p = j^+ + j^-, \quad k = j^+ - j^-. \quad (58)$$

The $\text{SU}(2)_\pm$ subgroups of $\text{Spin}(4)$ are its canonical self-dual and antiself dual components, generated by $\vec{L} \pm \vec{K}$, and should not be confused with the (non-canonical) SU(2) subgroup generated by \vec{L} , used to pick a time gauge. If we decompose $V_\rho = V_{p,k}$ in irreducibles of SU(2), we have

$$V_{p,k} = V_{j^+} \otimes V_{j^-} = \bigoplus_{j=|k|}^p V_j^{p,k}. \quad (59)$$

We now define $\mathcal{H}_{\gamma_v}^E$. In the representation space $V_{p,k}$, pick the $V_j^{p,k}$ subspace (in the decomposition above), where j is defined by

$$p = j + r \quad (60)$$

$$k = \gamma j - r \quad (61)$$

By doing so, we obtain the subspace $V_j^{\gamma j + r, j - r}$ in each $V_{p,k}$. By restricting in this manner all the V_{ρ_f} subspaces in (54) we obtain a subspace of \mathcal{H}_{γ_v} . We define the non-gauge-invariant new boundary space to be this subspace. That is

$$\bigoplus_{\{j_f, r_f\}} \bigotimes_e \bigotimes_{f \in \partial e} (V_{j_f}^{\gamma j_f + r_f, \gamma j_f - r_f})^{(e,f)} \quad (62)$$

where the sum is over non-negative half-integers j_f and r_f . The possible coloring in $\mathcal{H}_{\gamma_v}^E$ are labelled by the two non-negative half-integer quantum numbers j_f and r_f . The quantum number j_f characterizes the SU(2) spin of the representation and is easily identified with the corresponding LQG quantum number which is associated to each link of the graph. r_f is a new quantum number, also associated to each link of the graph.

Notice also that (60) restricts also the possible values of j and r to those for which $p = \gamma j + r$ is half integer.

This awkward feature of the Euclidean case disappears in the Lorentzian theory.

We can translate all this in terms of the (j^+, j^-) notation. This gives

$$j^+ = \frac{1+\gamma}{2}j \quad \text{and} \quad j^- = \frac{1-\gamma}{2}j + r \quad (63)$$

and the modified γ -simplicity relation ⁴

$$(1-\gamma)j^+ = (1+\gamma)(j^- - r). \quad (67)$$

Next, we define the gauge invariant new boundary space. Consider the diagonal actions of $h \in SU(2)$ on each product representation space eq.(57) at each e . We denote the invariant subspaces under this actions by

$$\mathcal{H}_e^{\{j_f\}} = \text{Inv}_{SU(2)} \left[\bigotimes_{f \in e} (V_{j_f}^{j_f^+ + r_f, \gamma j_f^- - r_f})^{(e, f)} \right] \quad (68)$$

The gauge invariant new boundary Hilbert space is defined by

$$\mathcal{H}_{\gamma_v}^E := \bigoplus_{\{j_f, r_f\}} \bigotimes_e \mathcal{H}_e^{\{j_f\}}. \quad (69)$$

An orthonormal basis in $\mathcal{H}_{\gamma_v}^E$ can be constructed as follows. Given a polyhedron e with F faces, we assign at e an F -valent $SU(2)$ intertwiner $i_e^{A_1 \dots A_F}$ associated with F $SU(2)$ irreps j_f , $f = 1, \dots, F$. An orthonormal basis is then defined by the following functions on $[Spin(4)]^{E(\gamma_v)}$

$$\begin{aligned} T_{\gamma_v, j_f, r_f, i_e}^E(g_f) &= \prod_f \sqrt{[(1+\gamma)j_f + 1][(1-\gamma)j_f + 2r_f + 1]} \\ &\prod_e \left[i_e^{A_{e1} \dots A_{eF}} \prod_{f \in e} C_{A_{ef}}^{m_{ef}^+ m_{ef}^-} \right] \prod_f \left[\epsilon^{n_{ef}^+ n_{ef}^-} \epsilon^{n_{ef}^- n_{ef}^-} \right] \\ &\prod_{(e, f)} \left[D_{m_{ef}^+ n_{ef}^+}^{\frac{1+\gamma}{2} j_f} (g_{ef}^+) D_{m_{ef}^- n_{ef}^-}^{\frac{1-\gamma}{2} j_f + r_f} (g_{ef}^-) \right] \end{aligned} \quad (70)$$

here $g_{ef} = (g_{ef}^+, g_{ef}^-) \in Spin(4)$, $D^j(g)$ is the representation matrix of the $SU(2)$ irrep j , and $C_{A_{ef}}^{m_{ef}^+ m_{ef}^-}$ denotes

⁴ The $Spin(4)$ irreps for a given Barbero-Immirzi parameter γ , should be such that

$$r = \frac{(1+\gamma)j^- - (1-\gamma)j^+}{1+\gamma} \quad (64)$$

is a non-negative integer, and satisfy

$$0 \leq r \leq j^+ + j^- - |j^+ - j^-| \quad (65)$$

implying

$$\frac{|1-\gamma|}{1+\gamma} j^+ \leq j^- \leq j^+ \quad \text{or} \quad j^+ \leq j^- \leq \frac{3+\gamma}{1+\gamma} j^+. \quad (66)$$

the Clebsch-Gordan coefficient $(A_f = -k_f, \dots, k_f)$

$$\left\langle \frac{1+\gamma}{2} j_f, \frac{1-\gamma}{2} j_f + r_f; j_f, A_{ef} \mid \frac{1+\gamma}{2} j_f, m_{ef}^+; \frac{1-\gamma}{2} j_f + r_{ef}, m_{ef}^- \right\rangle. \quad (71)$$

$\epsilon^{n_{ef}^+ n_{ef}^-}$ are the unique 2-valent $SU(2)$ intertwiners with representations $j_f^+ = \frac{1+\gamma}{2} j_f$ and $j_f^- = \frac{1-\gamma}{2} j_f + r_f$ respectively. Thus $T_{(\gamma_v, j_f, r_f, i_e)}^E$ is essentially a function over $g_f = g_{ef} g_{ef}'$. Note that if we ask the quantum numbers r_f to be some fixed integers, then the spin-network functions $T_{(\gamma_v, j_f, r_f, i_e)}^E$ can be equivalently considered as an $SU(2)$ spin-network functions, thus the boundary Hilbert space is spanned by $SU(2)$ spin-networks, as the case of LQG kinematical Hilbert space.

We are now ready to prove our first main result.

Theorem III.2. *The Hilbert space $\mathcal{H}_{\gamma_v}^E$ solves the geometric constraint (52-53), with $s = 1$.*

Proof: The closure constraint (53) follows immediately since the states in $\mathcal{H}_{\gamma_v}^E$ is invariant under the diagonal $SU(2\partial)$ gauge transformation $(g_{ef}^+, g_{ef}^-) \mapsto (h_e g_{ef}^+, h_e g_{ef}^-)$ at each e (the constraint is even solved strongly). The nontrivial proof is for the simplicity constraint (52). Define the self-dual/anti-self-dual operators:

$$\vec{J}_f^\pm := \frac{1}{2}(\vec{L}_f \pm \vec{K}_f) \quad (72)$$

then (52) reads

$$(1-\gamma) \langle \psi, \vec{J}_f^+ \psi' \rangle_E - (1+\gamma) \langle f, \vec{J}_\psi^- \psi' \rangle = 0. \quad (73)$$

The operators \vec{J}_f^\pm on $L^2(Spin(4))$ act on individual $V_{\rho_f}^{(e, f)}$ (see, e.g. Sec.32.2 of [4]). Therefore we only need to show that in each Clebsch-Gordan subspace $V_j^{\rho=(j^+, j^-)}$, with $j^+ \equiv \frac{1+\gamma}{2}$ and $j^- \equiv \frac{1-\gamma}{2} k + r$, the following relation holds for all pairs Φ, Ψ of vectors

$$(1-\gamma) \langle \Psi | \vec{J}^+ | \Phi \rangle - (1+\gamma) \langle \Psi | \vec{J}^- | \Phi \rangle = 0 \quad (74)$$

where $\langle | \rangle$ is the Hermitian inner product on the $Spin(4)$ irrep $V_{\rho=(j^+, j^-)}$.

To evaluate these matrix elements, we use the explicit representation of the vectors as multi-spinors. The vectors in the $SU(2)$ irrep V_j can be represented as totally symmetric spinorial tensors with $2j$ spinor indices. The generators of $SU(2)$ are then Pauli matrices $\sigma_i^A_B$ acting on each index, followed by a sum. A state $|\Phi\rangle$ in the Clebsch-Gordan subspace $V_j^{j^+, j^-} \subset V_{j^+} \otimes V_{j^-}$ can be expressed by $(A_i, B_i = 1, 2)$

$$\begin{aligned} \Phi^{A_1 \dots A_{2j^+}, B_1 \dots B_{2j^-}} &= \\ &\epsilon^{A_1 B_1} \dots \epsilon^{A_r B_r} \phi^{A_{r+1} \dots A_{2j^+}, B_{r+1} \dots B_{2j^-}}, \end{aligned} \quad (75)$$

with complete symmetrization of all (A_1, \dots, A_{2j^+}) indices understood and the same for the (B_1, \dots, B_{2j^-}) indices.

The action of \tilde{J}^- on the state Φ in (75), can then be computed explicitly, giving

$$\begin{aligned}
J^{-i}\Phi^{(A_1\dots A_{2j^+})(B_1\dots B_{2j^-})} &= \sum_{p=1}^{2j^-} \sigma_i^{B_p} \tilde{B}_p \Phi^{(A_1\dots A_{2j^+})(B_1\dots \tilde{B}_p \dots B_{2j^-})} \\
&= \sum_{p=1}^r \sigma_i^{B_p} \tilde{B}_p \epsilon^{A_1 B_1} \dots \epsilon^{A_p \tilde{B}_p} \dots \epsilon^{A_r B_r} \phi^{(A_{r+1} \dots A_{2j^+} + B_{r+1} \dots B_{2j^-})} + \sum_{p=r+1}^{2j^-} \sigma_i^{B_p} \tilde{B}_p \epsilon^{A_1 B_1} \dots \epsilon^{A_r B_r} \phi^{(A_{r+1} \dots A_{2j^+} + B_{r+1} \dots \tilde{B}_p \dots B_{2j^-})} \\
&= - \sum_{p=1}^r \sigma_i^{A_p} \tilde{A}_p \epsilon^{A_1 B_1} \dots \epsilon^{A_p \tilde{B}_p} \dots \epsilon^{A_r B_r} \phi^{(A_{r+1} \dots A_{2j^+} + B_{r+1} \dots B_{2j^-})} + \sum_{p=r+1}^{2j^-} \sigma_i^{B_p} \tilde{B}_p \epsilon^{A_1 B_1} \dots \epsilon^{A_r B_r} \phi^{(A_{r+1} \dots A_{2j^+} + B_{r+1} \dots \tilde{B}_p \dots B_{2j^-})}
\end{aligned} \tag{76}$$

where in the third step, we use the identity $\sigma_i^B \tilde{B} \epsilon^{A \tilde{B}} = -\sigma_i^A \tilde{A} \epsilon^{\tilde{A} B}$ coming from the $SL(2, \mathbb{C})$ invariance of ϵ^{AB} . Then the matrix elements of \tilde{J}^- are

$$\begin{aligned}
\langle \Psi | J^{-i} | \Phi \rangle &= - \sum_{p=1}^r \sigma_i^{A_p} \tilde{A}_p \Psi_{(A_1 \dots A_p \dots A_{2j^+})(B_1 \dots B_{2j^-})} \Phi^{(A_1 \dots \tilde{A}_p \dots A_{2j^+})(B_1 \dots B_{2j^-})} \\
&\quad + \sum_{p=r+1}^{2j^-} \sigma_i^{B_p} \tilde{B}_p \epsilon_{A_1 B_1} \dots \epsilon_{A_r B_r} \psi_{(A_{r+1} \dots A_{2j^+} + B_{r+1} \dots B_p \dots B_{2j^-})} \epsilon^{A_1 B_1} \dots \epsilon^{A_r B_r} \phi^{(A_{r+1} \dots A_{2j^+} + B_{r+1} \dots \tilde{B}_p \dots B_{2j^-})} \\
&= (-r) \sigma_i^{A_{2j^+}} \tilde{A}_{2j^+} \Psi_{(A_1 \dots A_{2j^+})(B_1 \dots B_{2j^-})} \Phi^{(A_1 \dots \tilde{A}_{2j^+})(B_1 \dots B_{2j^-})} \\
&\quad + (2j^- - r) \sigma_i^{A_{2j^+}} \tilde{A}_{2j^+} \epsilon_{A_1 B_1} \dots \epsilon_{A_r B_r} \psi_{(A_{r+1} \dots A_{2j^+} + B_{r+1} \dots B_{2j^-})} \epsilon^{A_1 B_1} \dots \epsilon^{A_r B_r} \phi^{(A_{r+1} \dots \tilde{A}_{2j^+} + B_{r+1} \dots B_{2j^-})} \\
&= 2(j^- - r) \sigma_i^{A_{2j^+}} \tilde{A}_{2j^+} \Psi_{(A_1 \dots A_{2j^+})(B_1 \dots B_{2j^-})} \Phi^{(A_1 \dots \tilde{A}_{2j^+})(B_1 \dots B_{2j^-})}
\end{aligned} \tag{77}$$

Similarly,

$$\langle \Psi | J^{+i} | \Phi \rangle = 2j^+ \sigma_i^{A_{2j^+}} \tilde{A}_{2j^+} \Psi_{(A_1 \dots A_{2j^+})(B_1 \dots B_{2j^-})} \Phi^{(A_1 \dots \tilde{A}_{2j^+})(B_1 \dots B_{2j^-})}. \tag{78}$$

Then eq.(74) follows immediately

$$\begin{aligned}
(1 - \gamma) \langle \Psi | J^{(+i)} | \Phi \rangle - (1 + \gamma) \langle \Psi | J^{(-i)} | \Phi \rangle \\
&= 2 [(1 - \gamma)j^+ - (1 + \gamma)(j^- - r)] \sigma_i^{A_{2j^+}} \tilde{A}_{2j^+} \Psi_{(A_1 \dots A_{2j^+})(B_1 \dots B_{2j^-})} \Phi^{(A_1 \dots \tilde{A}_{2j^+})(B_1 \dots B_{2j^-})} \\
&= 0
\end{aligned} \tag{79}$$

which proves the simplicity constraint eq.(52). \square

C. New Boundary Hilbert Space: Lorentzian Theory

Now we turn to the case of $G = SL(2, \mathbb{C})$. In this case the decomposition of the Hilbert space reads

$$\begin{aligned}
\mathcal{H}_{\gamma_v} &= \bigotimes_f L^2(SL(2, \mathbb{C}), d\mu_H) \\
&= \bigotimes_f \bigoplus_{k_f = \mathbb{N}/2} \int_{\mathbb{R}}^{\oplus} dp_f (p_f^2 + k_f^2) V_{(k_f, p_f)} \otimes V_{(k_f, p_f)}^*
\end{aligned} \tag{80}$$

where k_f are still non-negative half-integers but $p_f \in \mathbb{R}$ is now a real number. Here \int^{\oplus} denotes a direct integral decomposition [35] (see also Chapter 30 of [4]). $V_{(k, p)}$ denotes the unitary irrep of $SL(2, \mathbb{C})$ in the principal series, and $V_{(k, p)}^*$ denotes the adjoint irrep. We can then proceed as in the EUclidean theory. The BF boundary Hilbert space reads

$$\mathcal{H}_{\gamma_v} = \bigoplus_{\{k_f\}} \prod_f \int_{\mathbb{R}}^{\oplus} dp_f \prod_f (p_f^2 + k_f^2) \bigotimes_e \bigotimes_{f \in e} V_{(k_f, p_f)}^{(e, f)} \tag{81}$$

The representation space $V_{(k,p)}$ is infinite-dimensional and can be decomposed into $SU(2)$ irreps (irreps of the subgroup generated by \vec{L}), i.e.

$$V_{(k,p)} = \bigoplus_{j=k}^{\infty} V_j^{k,p}. \quad (82)$$

This time we introduce the two parameters j and r by

$$p = \gamma j \frac{j+1}{j-r}, \quad (83)$$

$$k = j - r. \quad (84)$$

and we define the new boundary space by restricting each $V_{(k,p)}$ to its $V_j^{k,p}$ subspace satisfying (83). This time p does not need to be half-integer, therefore (83) can be solved for any j . The new quantum numbers associated to each face are j_f and r_f , each being a nonnegative half integer.

As before, we consider the diagonal $SU(2)$ action at each e for all $h_e \in SU(2)$. The invariant subspace under this action is

$$\mathcal{J}_e^{j_f} = \text{Inv}_{SU(2)} \left[\bigotimes_{f \in e} \left(V_{\frac{\gamma j_f(j_f+1)}{j_f-r_f}, j_f-r_f} \right)^{(e,f)} \right] \quad (85)$$

The new boundary Hilbert space is defined by a product of these invariant subspaces over all the polyhedra e , followed by a sum over all the possible j_f and r_f :

$$\mathcal{H}_{\gamma_v}^L := \bigoplus_{\{r_f, j_f\}} \bigotimes_e \mathcal{J}_e^{j_f} \quad (86)$$

where j_f and k_f are non-negative half-integers with constraints (1) $j_f \geq r_f$. $\mathcal{H}_{\gamma_v}^L$ is a direct sum over a set of subspaces contained in the fiber Hilbert spaces of \mathcal{H}_{γ_v} (see eq.(80)), thus has well-defined inner product.

An orthonormal basis is constructed as follows. Consider the oriented boundary graph γ_v . Given a F -valent vertex/polyhedron e , we assign it an intertwiner $i_e^{A_1 \dots A_F}$ associated with F spins j_f , $f = 1, \dots, F$

$$i_e \in \text{Inv} \left[\bigotimes_{\substack{\text{outgoing} \\ (e,f)}} V_{j_f} \bigotimes_{\substack{\text{incoming} \\ (e,f)}} V_{j_f}^* \right] \quad (87)$$

An orthogonal basis in $\mathcal{H}_{\gamma_v}^L$ is given by the following functions (distributions) on $SL(2, \mathbb{C})$

$$T_{(\gamma_v, j_f, r_f, i_e)}^L(g_f) = \prod_e i_e^{A_{e1} \dots A_{eF}} \prod_{(e,e')} \Pi_{\frac{\gamma j_f(j_f+1)}{j_f-r_f}, j_f-r_f}^{j_f A_{ef}, j_f A_{e'f}}(g_f) \quad (88)$$

here $\Pi^{(p,k)}$ denotes the representation matrix in $SL(2, \mathbb{C})$ irrep labeled by (p, k) . All the A_{ef} indices of the representation matrices are contracted with the A_{ef} indices of the intertwiners.

The new boundary Hilbert space $\mathcal{H}_{\gamma_v}^L$ is *not* a subspace of the BF boundary Hilbert space \mathcal{H}_{γ_v} , because $T_{(\gamma_v, j_f, r_f, i_e)}^L$ are constructed by $\Pi^{(k,p)}$ which are distributions. In order to check the geometric constraints Eqs.(52) and (53) on $\mathcal{H}_{\gamma_v}^L$, we have to compute the (dual) action of the bivector operator on the distributions $T_{(\gamma_v, j_f, k_f, i_e)}^L$. Fortunately the Hilbert space $L^2(SL(2, \mathbb{C}))$ has the structure of direct integral decomposition (see eq.(80)). Then the (dual) action of the bivector operators \vec{K} and \vec{L} gives the actions of Lie algebra generators \vec{L} and \vec{K} on each fiber Hilbert space $V_{(k,p)}$.

We are now ready to prove our second main result

Theorem III.3. *The Hilbert space $\mathcal{H}_{\gamma_v}^L$ solves the geometric constraint (52,53), with $s = -1$.*

Proof: Closure constraint follows immediately and strongly by the diagonal $SU(2)$ invariance at each polyhedron e . We only need to consider a single irrep $V_{(k,p)}$ ($p = \frac{\gamma j(j+1)}{k}$) because \vec{L} and \vec{K} leave it invariant and, different (p, k) 's label orthogonal subspaces in $\mathcal{H}_{\gamma_v}^L$.

A canonical basis in $V_{(p,k)}$ is obtained diagonalizing the Casimir operators $J \cdot J$, $*J \cdot J$, $L \cdot L$ and L^3 . The basis can be denoted $|(p, k); j, m\rangle$ or simply as $|j, m\rangle$ since we only consider a single irrep. On this canonical basis, the generators act in the following way [36]:

$$\begin{aligned} L^3 |j, m\rangle &= m |j, m\rangle, \\ L^+ |j, m\rangle &= \sqrt{(j+m+1)(j-m)} |j, m+1\rangle, \\ L^- |j, m\rangle &= \sqrt{(j+m)(j-m+1)} |j, m-1\rangle, \\ K^3 |j, m\rangle &= -\alpha_{(j)} \sqrt{j^2 - m^2} |j-1, m\rangle - \beta_{(j)} m |j, m\rangle \\ &\quad + \alpha_{(j+1)} \sqrt{(j+1)^2 - m^2} |j+1, m\rangle, \\ K^+ |j, m\rangle &= -\alpha_{(j)} \sqrt{(j-m)(j-m-1)} |j-1, m+1\rangle \\ &\quad - \beta_{(j)} \sqrt{(j-m)(j+m+1)} |j, m+1\rangle \\ &\quad - \alpha_{(j+1)} \sqrt{(j+m+1)(j+m+2)} |j+1, m+1\rangle, \\ K^- |j, m\rangle &= \alpha_{(j)} \sqrt{(j+m)(j+m-1)} |j-1, m-1\rangle \\ &\quad - \beta_{(j)} \sqrt{(j+m)(j-m+1)} |j, m-1\rangle \\ &\quad + \alpha_{(j+1)} \sqrt{(j-m+1)(j-m+2)} |j+1, m-1\rangle, \end{aligned}$$

where

$$L^\pm = L^1 \pm iL^2, \quad K^\pm = K^1 \pm iK^2 \quad (89)$$

and

$$\alpha_{(j)} = \frac{i}{j} \sqrt{\frac{(j^2-k^2)(j^2+p^2)}{4j^2-1}}, \quad \beta_{(j)} = \frac{kp}{j(j+1)} \quad (90)$$

Using these equations, one can check directly that

$$\langle j, m' | (K^i + \beta_{(j)} L^i) | j, m \rangle = 0. \quad (91)$$

which is nothing but

$$\langle j, m' | (K^i + \gamma L^i) | j, m \rangle = 0. \quad (92)$$

because $pk = \gamma j(j+1)$.

□

D. Quantum Polyhedral Geometry

In this section we show that the boundary Hilbert space $\mathcal{H}_{\gamma_v}^E$ and $\mathcal{H}_{\gamma_v}^L$ carries a representation of quantum polyhedral geometry, consistent with the classical polyhedral geometry that we have discussed in Section III A. Recall that we defined two different bivectors J_{ef}^{IJ} and Σ_{ef}^{IJ} related by

$$B_f^{IJ} = \left(* \Sigma_f + \frac{1}{\gamma} \Sigma_f \right)_{ef}^{IJ} \quad (93)$$

Theorem III.1 states that classically, the geometric constraint of B_f^{IJ} implies that B_f^{IJ} is the area bivector of a face f of a polyhedron e . On the BF boundary Hilbert space \mathcal{H}_{γ_v} the bivector B_f^{IJ} is quantized to be the left invariant vector field J_f^{IJ} . Inverting the above equation, we can write the quantum operator corresponding to Σ (which we indicate with the same symbol) as

$$\Sigma_f^{IJ} := \frac{\gamma^2}{\gamma^2 - s} \left(* J_{ef}^{IJ} - \frac{1}{\gamma} J_{ef}^{IJ} \right) \quad (94)$$

Give a polyhedron/vertex e of the boundary, if we choose the unit vector $(n_e)_I = (1, 0, 0, 0)$, then the simplicity constraint implies the vanishing of Σ_f^{0j} for each face f . That is, the matrix elements of the operators Σ_f^{0i} vanish on $\mathcal{H}_{\gamma_v}^E$ and $\mathcal{H}_{\gamma_v}^L$, thus we consider them as vanishing operators on $\mathcal{H}_{\gamma_v}^E$ or $\mathcal{H}_{\gamma_v}^L$. The nontrivial operator on $\mathcal{H}_{\gamma_v}^E$ and $\mathcal{H}_{\gamma_v}^L$ is

$$\Sigma_f^i \equiv \frac{1}{2} \epsilon^i{}_{jk} \Sigma_f^{jk} = \frac{\gamma^2}{\gamma^2 - s} \left(\hat{K}_f^i - \frac{1}{\gamma} \hat{L}_f^i \right) \quad (95)$$

Because of the quantum simplicity constraint (52), we can identify \hat{K}_{ef}^i with $s\gamma \vec{L}_{ef}$ on the dense domain of the new boundary Hilbert space, as far as the matrix elements of the operators are concerned. Thus, in the sense of their matrix element

$$\vec{\Sigma}_f = s\gamma \vec{L}_f \quad (96)$$

By the $SU(2)$ gauge invariance, then

$$\sum_{f \in \partial e} \hat{\Sigma}_f = 0 \quad (97)$$

(with all f 's oriented out of e .) Consider now a family of coherent states that makes the spread of these operators small. These coherent states are then characterized by eigenvalues of $\vec{\Sigma}_f$ that satisfy the equation above. By Minkowski theorem, they determine a polyhedron e at each vertex. $\vec{\Sigma}_{ef}$ represents the normal to face area of the polyhedron e , normalized so that its norm is the area of the face [22]. The area operator for a face f (in units that $8\pi\ell_p^2 = 1$ [1]) is then

$$\hat{A}_f = \gamma \sqrt{\hat{L}_{ef}^i \hat{L}_{ef}^i} = \gamma \sqrt{j_f(j_f + 1)}. \quad (98)$$

It is clear that the area operator doesn't depend on the orientation of the face. Thus the two areas of the two faces of the two polyhedra e and e' that are determined by the same face f are equal. (Recall that the one of the two is determined by the left invariant vector field J and the other by the right invariant vector field R , since $R_f = J_{f^{-1}}$.)

At fixed values of the areas, the shapes of the polyhedra is described by the intertwiner spaces at each e . We recall that an over-complete basis in these spaces is formed by the Livine-Speziale coherent intertwiners [10]

$$||\vec{j}, \vec{n}\rangle := \int_{SU(2)} d\mu_H(g) \prod_{f \in e} D^{j_f}(g) |j_f, n_f\rangle \quad (99)$$

These can be labeled [16] by the elements in $\times_f S^2/SU(2, \mathbb{C})$. Thinking of S^2 as the compactified complex plane of z_f , a coherent intertwiner is determined by F quantum area j_f and $F - 3$ complex cross-ratios \vec{Z}

$$Z_k = \frac{(z_{k+3} - z_1)(z_2 - z_3)}{(z_{k+3} - z_3)(z_2 - z_1)} \quad (100)$$

which are invariants of $SU(2, \mathbb{C})$. The space of these cross-ratio $\times_f S^2/SU(2, \mathbb{C})$ can be identified [38] with the Kapovich and Millson phase space \mathcal{S}_F [39], which is also *the space of shapes of polyhedra at fixed areas j_f* . Thus, we can label the coherent intertwiner by $||\vec{j}, \vec{Z}\rangle$, in variables that relate directly to the shape of the polyhedron. The resolution of identity in the intertwiner space can be expressed as a integral over the Kapovich and Millson phase space \mathcal{S}_F , i.e.

$$\mathbf{1}_{\mathcal{I}(\vec{j})} = \int_{\mathcal{S}_F} d\mu(\vec{Z}) ||\vec{j}, \vec{Z}\rangle \langle \vec{j}, \vec{Z}|| \quad (101)$$

where the explicit expression of the measure $d\mu(\vec{Z})$ is given in [16]. Finally the volume operator for a polyhedron can be defined as in [22], in terms of the classical volume of a polyhedron and the coherent intertwiner.

Notice that the quantum polyhedral geometry doesn't depend on the quantum numbers r_f . The quantum numbers r_f don't affect the quantum 3-geometry on the boundary.

IV. AMPLITUDES

A. Vertex Amplitude: Euclidean theory

If we take BF theory and restrict all vertex-boundary spaces to $\mathcal{H}_{\gamma_v}^E$ (or $\mathcal{H}_{\gamma_v}^L$) we obtain a new dynamical model. Here we give explicitly its vertex and face amplitude. Let's start with the Euclidean case. The BF vertex amplitude can be written in the holonomy representation: (each edge joining at v is uniquely determined by a ver-

tex/polyhedron e on the boundary) reads

$$A_v(g_f) = \sum_{j_f^\pm, i_e^\pm} \prod_f \sqrt{2j_f^+ + 1} \sqrt{2j_f^- + 1} \\ A_v(j_f^+, j_f^-; i_e^+, i_e^-) T_{\gamma_v, j_f^\pm, i_e^\pm}^{BF}(g_f) \quad (102)$$

Here

$$A_v(j_f^+, j_f^-; i_e^+, i_e^-) = \text{tr} \left(\bigotimes_{e \in v} I_e^\dagger \right) \quad (103)$$

where $I = (i^+, i^-)$ and we assume the valence of v is n . $T_{(\gamma_v, j_f^\pm, i_e^\pm)}^{BF} \in \mathcal{H}_{\gamma_v}$ is a $Spin(4)$ spin-network function on the boundary graph γ_v

$$T_{\gamma_v, j_f^\pm, i_e^\pm}^{BF}(g_f) := T_{\gamma_v, j_f^+, i_e^+}(g_f^+) T_{\gamma_v, j_f^-, i_e^-}(g_f^-) \quad (104)$$

where

$$T_{\gamma_v, j_f, i_e}(g_f) = \prod_f \sqrt{2j_f + 1} \prod_e \left[(i_e)^{\{m_{ef}\}} \right] \quad (105) \\ \prod_{(e,f)} \left[D_{m_{ef}^j n_{ef}^j}^{j_f}(g_{ef}) \right] \bigotimes_f \left[\epsilon^{n_{ef} n_{e'f}} \right]$$

The vertex amplitude eq.(102) is a distribution of the boundary Hilbert space \mathcal{H}_{γ_v} , i.e. there is a dense domain of \mathcal{H}_{γ_v} spanned by the spin-network functions $T_{(\gamma_v, j_f^\pm, i_e^\pm)}^{BF}$, such that $A_v(g_{ee'})$ lives in the algebraic dual of this dense domain. After imposing the geometric constraint, we restrict ourself to the subspace $\mathcal{H}_{\gamma_v}^E$. Such a restriction results in a (dual) projection of the vertex amplitude A_v , i.e. we obtain

$$A_v^E(g_f) = \sum_{j_f, r_f, i_e} \langle T_{\gamma_v, j_f, r_f, i_e}, A_v \rangle T_{\gamma_v, j_f, r_f, i_e}^E(g_f) \quad (106)$$

where $T_{\gamma_v, j_f, r_f, i_e}$ is a orthonormal basis of $\mathcal{H}_{\gamma_v}^E$ (recall eq.(70)), and $\langle \cdot, \cdot \rangle$ is the inner product of the BF boundary Hilbert space \mathcal{H}_{γ_v} . The evaluation of A_v^E is straightforward:

$$A_v^E(g_f) = \sum_{j_f, r_f, i_e} \prod_f \sqrt{2j_f^+ + 1} \sqrt{2j_f^- + 1} \quad (107) \\ \sum_{i_e^+, i_e^-} A_v \left(j_f^+, j_f^-; i_e^+, i_e^- \right) \prod_e f_{i_e^+, i_e^-}^{i_e} T_{\gamma_v, j_f, r_f, i_e}^E(g_{ee'})$$

where we write $j^+ \equiv \frac{1+\gamma}{2}j$ and $j^- \equiv \frac{1-\gamma}{2}j + r$ and for each F -valent polyhedron/vertex

$$f_{i_e^+, i_e^-}^{i_e} = \overline{C_{A_{e1}}^{A_{e1} \dots A_{eF}} C_{A_{e1}}^{m_{e1}^+ m_{e1}^-} \dots C_{A_{eF}}^{m_{eF}^+ m_{eF}^-}} \\ (i_e^+)_{m_{e1}^+ \dots m_{eF}^+} (i_e^-)_{m_{e1}^- \dots m_{eF}^-} \quad (108)$$

Then in the (j_f, r_f, i_e) -spin-network representation, the vertex amplitude is

$$A_v^E(j_f, r_f, i_e) = \sum_{i_e^+, i_e^-} A_v \left(j_f^+, j_f^-; i_e^+, i_e^- \right) \prod_e f_{i_e^+, i_e^-}^{i_e} \quad (109)$$

which nontrivially depends on the quantum numbers r_f via the definition of j_f^- .

There is another way to write this vertex amplitude in (j_f, r_f, i_e) -spin-network representation. Define a map $I_E^{\{r_f\}}$ from $SU(2)$ intertwiners to $Spin(4)$ intertwiners, depending on the quantum numbers r_f . Given an F -valent $SU(2)$ intertwiner i_e with spins k_1, \dots, k_F , let

$$I_E^{r_f} : i_e \mapsto I_E^{r_f}(i_e) = i_e^{A_{e1} \dots A_{eF}} C_{A_{e1}}^{m_{e1}^+ n_{e1}^-} \dots C_{A_{eF}}^{m_{eF}^+ n_{eF}^-} \\ \int dg^+ dg^- \prod_{f \in e} D_{m_{ef}^+ n_{ef}^+}^{\frac{1+\gamma}{2} j_k}(g^+) D_{m_{ef}^- n_{ef}^-}^{\frac{1-\gamma}{2} j_f + r_f}(g^-) \quad (110)$$

Given an edge $e \in E(\mathcal{K})$, we associate an intertwiner $I_E^{\{r_f\}}(i_e)$ to the initial point of the edge e , and a dual intertwiner $I_E^{\{r_f\}}(i_e)^\dagger$ to the final point of e . Then the vertex amplitude A_v^E can be written a spinfoam trace of the intertwiners $I_E^{\{r_f\}}(i_e)$

$$A_v^E(k_f, r_f, i_e) = \text{tr} \left(\bigotimes_{e \in v} I_E^{\{r_f\}}(i_e)^\dagger \right) \quad (111)$$

where we have again assumed that all the edges joining at v are oriented towards v .

B. Vertex Amplitude: Lorentzian theory

The Lorentzian vertex amplitude can be defined in the same manner. The $SL(2, \mathbb{C})$ BF vertex amplitude is expressed in the holonomy representation as a distribution

$$A_v(g_f) = \sum_{k_f, I_e} \int \prod_f dp_f \prod_f (k_f^2 + p_f^2) \quad (112) \\ A_v(p_f, k_f; I_e) T_{\gamma_v, (k, p)_f, (1, \mathbf{n})_e}^{BF}(g_f)$$

where

$$A_v(p_f, k_f; I_e) = \text{tr} \left(\bigotimes_e I_e^\dagger \right) \quad (113)$$

and

$$T_{\gamma_v, p_f, k_f, I_e}^{BF}(g_f) = \prod_e I_{\{j_{ef}\}, \{m_{ef}\}; I_e} \prod_f \Pi_{j_{ef} m_{ef}, j_{e'f} m_{e'f}}^{p_f, k_f}(g_f)$$

Recall that we always assume the vertex amplitude is associated with an integrable spin-network graph, thus is finite after regularization [32].

We can project A_v on the new boundary Hilbert space $\mathcal{H}_{\gamma_v}^L$, in the same way as the Euclidean case

$$A_v^L(g_f) = \sum_{j_f, r_f, i_e} \prod_f \left(\frac{\gamma^2 j_f^2 (j_f + 1)^2}{(j_f - r_f)^2} + (j_f - r_f)^2 \right) \\ \langle T_{\gamma_v, j_f, r_f, i_e}^L, A_v \rangle T_{\gamma_v, j_f, r_f, i_e}^L(g_{ee'}) \quad (114)$$

where \langle , \rangle is the inner product on the BF boundary Hilbert space. The states

$$T_{\gamma_v, j_f, r_f, i_e}^L(g_f) = \prod_e i_e^{A_{e1} \dots A_{eF}} \prod_{(e, e')} \Pi_{j_f A_{ef}, j_f A_{e'f}}^{\frac{\gamma j_f(j_f+1)}{j_f-r_f}, j_f-r_f}(g_f)$$

form an orthogonal basis in $\mathcal{H}_{\gamma_v}^L$. By using the orthogonality relation

$$\int_{SL(2, \mathbb{C})} dg \overline{\Pi_{jm, ln}^{(p, k)}(g)} \Pi_{j'm', l'n'}^{(p', k')}(g) = \frac{1}{k^2 + p^2} \delta^{kk'} \delta(p - p') \delta_{jj'} \delta_{ll'} \delta_{mm'} \delta_{nn'} \quad (115)$$

it is straightforward to show that in the (j_f, r_f, i_e) -spin-network representation, the resulting vertex amplitude reads

$$\begin{aligned} A_v^L(j_f, k_f, i_e) &= \left\langle T_{(\gamma_v, j_f, k_f, i_e)}^L, A_v \right\rangle \quad (116) \\ &= \sum_{I_e} A_v \left(\left(\frac{\gamma j_f(j_f+1)}{j_f-r_f}, j_f-r_f \right); I_e \right) \prod_e J_{I_e}^{i_e} \end{aligned}$$

where

$$J_{I_e}^{i_e} := \overline{i_e^{\{A_{ef}\}}} I_{\{j_f\}, \{A_{ef}\} I_e} \left(\frac{\gamma j_f(j_f+1)}{j_f-r_f}, j_f-r_f \right) \quad (117)$$

As expected, the vertex amplitude A_v^L obtained in this manner is divergent, and we need a regularization procedure. To this aim, rewrite the vertex amplitude in terms of spinfoam trace as we did for the Euclidean theory. We define a formal map $I_L^{r_f}$ from $SU(2)$ intertwiners into $SL(2, \mathbb{C})$ intertwiners, depending on the quantum numbers r_f

$$I_L^{r_f}(i_e)_{\{j_f\}, \{A_f\}} = \int dg \prod_{f \subset e} \Pi_{j_f' A_{ef}', j_f A_{ef}}^{\left(\frac{\gamma j_f(j_f+1)}{j_f-r_f}, j_f-r_f \right)}(g) \cdot i_e^{\{A_{ef}\}}$$

which gives A_v^L by a spinfoam trace

$$A_v^L(j_f, r_f, i_e) = \text{tr} \left(\bigotimes_{f \in e} I_L^{\{r_f\}}(i_{ef})^\dagger \right) \quad (118)$$

To regularize the vertex amplitude A_v^L it is sufficient to removing one of the dg integration (which is redundant) at each vertex. With this, the vertex amplitude A_v^L is finite.

C. Face Amplitude and Partition Function

It is argued in [29] that the face amplitude of a spinfoam model is determined by three inputs: (a) the choice of the boundary Hilbert space, (b) the requirement that the composition law holds when gluing two complexes \mathcal{K} and \mathcal{K}' , (c) a particular locality requirement (see [29]

for the details of the three assumptions). These requirements are implemented if the partition function has the form (22). By inserting the vertex amplitudes that we have defined into this expression, we complete the definition of an Euclidean and a Lorentzian model.

Expanding the delta function in representation, we obtain

$$Z_{E,L}(\mathcal{K}) = \sum_{j_f, r_f, i_e} \prod_f d^{E,L}(j_f, r_f) \prod_v A_v^{E,L}(j_f, r_f, i_e)$$

where the Euclidean face amplitude is

$$d^E(j_f, r_f) = \left[(1 + \gamma)j_f + 1 \right] \left[(1 - \gamma)j_f + 2r_f + 1 \right] \quad (119)$$

the Lorentzian one is

$$d^L(j_f, r_f) = \frac{\gamma^2 j_f^2 (j_f + 1)^2}{(j_f - r_f)^2} + (j_f - r_f)^2. \quad (120)$$

where the dimension factors $A_f^E := \left[(1 + \gamma)k_f + 1 \right] \left[(1 - \gamma)k_f + 2r_f + 1 \right]$ and $A_f^L := \left[k_f^2 + \gamma^2 j_f^2 (j_f + 1)^2 / k_f^2 \right]$ are the face amplitudes for the Euclidean and Lorentzian theories. In the Euclidean case, the face amplitudes is different from the one obtained in [29] and coincide with the one deduced from the BF partition function. In [29] the face amplitude obtained is the dimension of $SU(2)$ unitary irrep i.e. $2j_f + 1$. The origin of the difference is the difference in the boundary Hilbert space. The one here, $\mathcal{H}_{\gamma_v}^E$ or $\mathcal{H}_{\gamma_v}^L$, has additional degree of freedom with respect to the space $L^2(SU(2)^L)$ of [29].

V. THE NEW DEGREE OF FREEDOM AND RELATION TO QUANTUM GR

Does the new degree of freedom of the theory defined above, which is captured by the quantum number r_f , has a physical interpretation relevant for quantum gravity? There are some reasons to suspect a negative answer. Let us consider the Euclidean theory for simplicity.

First, we have seen that r_f does not affect the boundary geometry. We expect all gravitational degrees of freedom to be captured by the geometry. More precisely, in the classical theory we have the well known (“left area=right area”) relation

$$|\Sigma^+|^2 = |\Sigma^-|^2, \quad (121)$$

which implies

$$|1 - \gamma|j^+ = |1 + \gamma|j^- \quad (122)$$

which in turns implies $r_j = 0$. We can still obtain states compatible with GR in the classical limit by demanding

that

$$\begin{aligned} \lim_{j^\pm \rightarrow \infty} \frac{r}{j^-} &= 0 \text{ for } 0 < \gamma < 1 \\ \lim_{j^\pm \rightarrow \infty} \frac{r}{j^-} &= 2 \text{ for } \gamma > 1 \end{aligned} \quad (123)$$

in the large- j asymptotic regime. But this begins to be a bit artificial.

Furthermore, in the classical theory the area of a face can be equally computed in the time gauge as $A_4 = \sqrt{(\Sigma_f)^{IJ}(\Sigma_f)_{IJ}}$ or as $A_3 = \gamma \sqrt{\Sigma_f^i \Sigma_f^i}$. Classically the two areas A_4 and A_3 are equal after the simplicity constraint is imposed, and they indeed equal in the large- j limit after quantization [9]. Let us denote the condition $A_4 = A_3$ the *consistency constraint*. If we ask A_4 and A_3 to be equal as operators in the quantum level on the boundary Hilbert space (as in the case of [9]), then again this fixes r_f . The precise value of r_f fixed depends on how the operators corresponding to A_4 and A_3 are ordered. In this sense the quantum numbers r_f are related to the operator-ordering ambiguities of the consistency constraint. Once an order is chosen, there is no more independent quantum number r_f in the theory. With a suitable ordering, we can fix $r_f = 0$

For these consideration, it may be reasonable to suspect that the weak imposition of the simplicity constraints may in fact be too weak to properly define quantum general relativity, in the same sense in which the strong imposition of these constraints in the old Barrett-Crane model was too strong. There is a simple way out, which is to impose the (non-commuting) simplicity constraints weakly, and the diagonal simplicity constraint (for instance in the form (121)) strongly. With this choice of constraints, properly ordered, we obtain $r_f = 0$, precisely the LQG state space in the boundary, and precisely the new models amplitudes. Finally, the gluing

conditions gives the SU(2) face amplitude. Thus, we recover precisely the quantum gravity theory described for instance in [1].

Note that one could also take the point of view that the quantum numbers r_f label different possible definitions of the spin-foam models. In each of these spin-foam models, the boundary Hilbert space solves the simplicity constraint weakly. And for different choices of r_f the boundary Hilbert spaces are isometric to each other.

VI. CONCLUSION AND OUTLOOK

By imposing the simplicity constraints on a quantum BF theory defined on an arbitrary cellular complex, we have obtained a theory which: (1) is well defined both in the Euclidean and the Lorentzian context; (2) generalizes the existing spinfoam model to general 2-cell complexes, along the lines suggested by [20]; (3) has boundary state that have a natural interpretation in the semi-classical limit as a polyhedral geometry on the boundary. In particular, we have shown that the KKL extension of the spinfoam formalism still satisfies the simplicity conditions weakly.

The weak simplicity constraint allow a space larger than the one of LQG to emerge. The physical interpretation of the additional degree of freedom is unclear. It can be eliminated by imposing the non-commuting simplicity constraints weakly and the diagonal one strongly.

Acknowledgments

The authors are grateful for the fruitful discussions with Eugenio Bianchi and Simone Speziale. Y.D. is supported by CSC scholarship No. 2008604080.

-
- [1] C. Rovelli. Simple model for quantum general relativity from loop quantum gravity. [arXiv:1010.1939]
C. Rovelli. A new look at loop quantum gravity. [arXiv:1004.1780]
- [2] A. Perez. spinfoam models for quantum gravity. *Class. Quant. Grav.* 20 (2003) R43-R104.
D. Oriti. Spacetime geometry from algebra: spin foam models for non-perturbative quantum gravity. *Rep. Prog. Phys.* 64 (2001) 1703-1757.
J. Baez. Spin foam models. *Class. Quant. Grav.* 15 (1998) 1827-1858.
- [3] J. Barrett and L. Crane. Relativistic spin-networks and quantum gravity. *J. Math. Phys.* 39 3296
J. Barrett and L. Crane. A Lorentzian signature model for quantum general relativity. *Class. Quant. Grav.* 17 (2000) 3101-3118.
- [4] T. Thiemann. *Modern Canonical Quantum General Relativity* (Cambridge University Press, Cambridge, 2007)
- [5] C. Rovelli. *Quantum Gravity* (Cambridge University Press 2004)
C. Rovelli and L. Smolin. Loop space representation for quantum general relativity. *Nucl. Phys. B*331 (1990) 80
- [6] A. Ashtekar and J. Lewandowski. Background independent quantum gravity: A status report. *Class. Quant. Grav.* 21 (2004) R53.
M. Han, W. Huang and Y. Ma. Fundamental structure of loop quantum gravity. *Int. J. Mod. Phys. D*16 (2007) 1397-1474 [arXiv:gr-qc/0509064].
- [7] K. Noui and A. Perez. Three dimensional loop quantum gravity: physical scalar product and spin foam models. *Class. Quant. Grav.* 22 (2006) 1739-1762
- [8] M. Han and T. Thiemann. On the Relation between Operator Constraint -, Master Constraint -, Reduced Phase Space -, and Path Integral Quantisation. [arXiv:0911.3428]
M. Han and T. Thiemann. On the Relation between Rigging Inner Product and Master Constraint Direct Integral Decomposition. [arXiv:0911.3431]

- M. Han. Path Integral for the Master Constraint of Loop Quantum Gravity. [arXiv:0911.3432]
 J. Engle, M. Han and T. Thiemann. Canonical path-integral measure for Holst and Plebanski gravity: I. Reduced Phase Space Derivations. [arXiv:0911.3433]
 M. Han. Canonical path-integral measure for Holst and Plebanski gravity: II. Gauge invariance and physical inner product. [arXiv:0911.3436]
- [9] J. Engle, R. Pereira and C. Rovelli. The loop-quantum-gravity vertex-amplitude. *Phys. Rev. Lett.* 99 (2007) 161301
 J. Engle, E. Livine, R. Pereira and C. Rovelli. LQG vertex with finite Immirzi parameter. *Nucl. Phys. B* 799 (2008) 136
- [10] L. Freidel and K. Krasnov. New spin foam model for 4d gravity. *Class. Quant. Grav.* 25 (2008) 125018
 E. Livine and S. Speziale. A new spinfoam vertex for quantum gravity. *Phys. Rev. D* 76 (2007) 084028
 E. Livine and S. Speziale. Consistently solving the simplicity constraints for spinfoam quantum gravity. *Europhys. Lett.* 81 (2008) 50004
- [11] J. Plebanski. On the separation of Einsteinian substructures. *J. Math. Phys.* 18 (1977) 2511-2520.
 M. P. Reisenberger. Classical Euclidean general relativity from “left-handed area = righthanded area”. [arXiv:gr-qc/9804061]
 R. De Pietri and L. Freidel. so(4) Plebanski action and relativistic spin foam model. *Class. Quant. Grav.* 16 (1999) 2187-2196.
- [12] T. Thiemann. Quantum spin dynamics. VIII. The master constraint. *Class. Quant. Grav.* 23 (2006), 2249-2266. [gr-qc/0510011]
 M. Han and Y. Ma. Master constraint operator in loop quantum gravity. *Phys. Lett. B* 635 (2006), 225-231. [gr-qc/0510014]
 K. Giesel, T. Thiemann. Algebraic Quantum Gravity (AQG) I,II,III,IV. *Class. Quant. Grav.* 24 (2007) 2465-2588, *Class. Quant. Grav.* 27 (2010) 175009
- [13] Y. Ding and C. Rovelli. The volume operator in covariant quantum gravity. *Class. Quant. Grav.* 27 (2010) 165003. [arXiv:0911.0543 [gr-qc]]
 Y. Ding and C. Rovelli. Physical boundary Hilbert space and volume operator in the Lorentzian new spinfoam theory. *Class. Quant. Grav.* 27 (2010) 205003. [arXiv:1006.1294[gr-qc]]
- [14] A. Barbieri. Quantum tetrahedra and simplicial spin networks. *Nucl. Phys. B* 518 (1998) 714-228
- [15] J. W. Barrett, R. J. Dowdall, W. J. Fairbairn, H. Gomes and F. Hellmann. Asymptotic analysis of the EPRL four-simplex amplitude. *J. Math. Phys.* 50, 112504 (2009). [arXiv:0902.1170]
 J. W. Barrett, R. J. Dowdall, W. J. Fairbairn, F. Hellmann and R. Pereira. Lorentzian spin foam amplitudes: graphical calculus and asymptotics. [arXiv:0907.2440]
- [16] F. Conrady and L. Freidel. Quantum geometry from phase space reduction. *J. Math. Phys.* 50 (2009) 123510
- [17] E. Bianchi, E. Magliaro, and C. Perini. LQG propagator from the new spin foams. *Nucl. Phys. B* 822 (2009) 245-269
 E. Alesci, E. Bianchi, and C. Rovelli. LQG propagator: III. The new vertex. *Class. Quant. Grav.* 26 (2009) 215001
- [18] E. Bianchi, C. Rovelli and F. Vidotto. Towards Spinfoam Cosmology. *Phys. Rev. D* 82 (2010) 084035. [arXiv:1003.3483 [gr-qc]]
- [19] J. C. Baez, J. D. Christensen and G. Egan. Asymptotics of 10j symbols. *Class. Quant. Grav.* 19 (2002) 6489
 L. Freidel and D. Louapre. Asymptotics of 6j and 10j symbols. *Class. Quant. Grav.* 20 (2003) 1267
 J. W. Barrett and C. M. Steele. Asymptotics of relativistic spin networks. *Class. Quant. Grav.* 20 (2003) 1341
 E. Alesci and C. Rovelli. The complete LQG propagator: I. Difficulties with the Barrett-Crane vertex. *Phys. Rev. D* 76 (2007) 104012
- [20] W. Kamiński, M. Kisielowski and J. Lewandowski. spinfoams for all loop quantum gravity. [arXiv:0909.0939[gr-qc]]
 W. Kamiński, M. Kisielowski and J. Lewandowski. The EPRL intertwiners and corrected partition function. [arXiv:0912.0540[gr-qc]]
- [21] H. Minkowski. Allgemeine Lehrsätze über die konvexe Polyeder. *Nachr. Ges. Wiss. Goettingen* (1897) 198-219
- [22] E. Bianchi, P. Donà, and S. Speziale. Polyhedra in loop quantum gravity. [arXiv:1009.3402v1[gr-qc]]
- [23] H. Ooguri. Topological lattice models in four-dimensions. *Mod. Phys. Lett. A* 7 (1992) 2799-2810
- [24] E. Bianchi, L. Modesto, C. Rovelli, and S. Speziale. Graviton propagator in loop quantum gravity. *Class. Quant. Grav.* 23 (2006) 6989-7028
 C. Rovelli. Graviton propagator from background-independent quantum gravity. *Phys. Rev. Lett.* 97 (2006) 151301
- [25] Y. Ding and M. Han. Large-j asymptotics of the generalized spinfoam model. [in preparation]
- [26] S. Alexandrov, private communication.
- [27] W. Greiner and J. Reinhardt. *Field quantization* (Springer, 1996)
- [28] M. B. Green, J. H. Schwarz, and E. Witten. *Superstring theory: Volume 1 Introduction*. (Cambridge University Press, 1988)
- [29] E. Bianchi, D. Regoli, and C. Rovelli. Face amplitude of spinfoam quantum gravity. arXiv:1005.0764 [gr-qc]
- [30] E. Magliaro, and C. Perini. Local spin foams. arXiv:1010.5227 [arXiv]
- [31] W. Ruhl. *The Lorentz group and harmonic analysis* (W.A. Benjamin, Inc., New York, 1970).
 I. M. Gel'fand, M. I. Graev, and N. Ya. Vilenkin. *Generalized Functions: Volume 5 Integral Geometry and Representation Theory* (Academic Press, 1966).
- [32] J. Baez and J. Barrett. Integrability for relativistic spin networks. *Class. Quant. Grav.* 18 (2001) 4683
 J. Engle and R. Pereira. Regularization and finiteness of the Lorentzian LQG vertices. *Phys. Rev. D* 79 (2009) 084034
- [33] E. Buffenoir, M. Henneaux, K. Noui, and Ph. Roche. Hamiltonian analysis of Plebanski theory. *Class. Quant. Grav.* 21 (2004) 5203-5220 [arXiv:gr-qc/0404041]
- [34] J. B. Lasserre. An analytical expression and an algorithm for the volume of a Convex Polyhedron in \mathbb{R}^n . *J. Optim. Theor. Appl.* 39 (1983) 363-377
- [35] I. M. Gelfand, N. Ya. Vilenkin. *Generalized functions: Volume 4 Applications of harmonic analysis* (Academic Press, 1964)
- [36] I. M. Gel'fand, R. A. Minlos and Z. Ya. Shapiro. *Representations of the rotation and Lorentz groups and their applications* (Pergamon Press, 1963), pp. 187-189.
- [37] A. Perelomov. *Generalized coherent states and their applications*. Springer-Verlag, 1985
- [38] L. Freidel, K. Krasnov and E.R. Livine. Holomorphic

- Factorization for a Quantum Tetrahedron. Commun. Math. Phys. 297, 45 (2010) [arXiv:0905.3627 [hep-th]].
- [39] M. Kapovich and J. J. Millson. The symplectic geometry of polygons in Euclidean space. J. Differential Geom. 44, 3 (1996), 479-513.