



HAL
open science

The pan-DAC inhibitor LBH589 is a multi-functional agent in breast cancer cells: cytotoxic drug and inducer of sodium-iodide symporter (NIS)

N. Fortunati, M. G. Catalano, F. Marano, V. Mugoni, M. Pugliese, O. Bosco, F. Mainini, G. Boccuzzi

► **To cite this version:**

N. Fortunati, M. G. Catalano, F. Marano, V. Mugoni, M. Pugliese, et al.. The pan-DAC inhibitor LBH589 is a multi-functional agent in breast cancer cells: cytotoxic drug and inducer of sodium-iodide symporter (NIS). Breast Cancer Research and Treatment, 2010, pp.667-675. <10.1007/s10549-010-0789-z>. <hal-00534548>

HAL Id: hal-00534548

<https://hal.science/hal-00534548v1>

Submitted on 10 Nov 2010

HAL is a multi-disciplinary open access archive for the deposit and dissemination of scientific research documents, whether they are published or not. The documents may come from teaching and research institutions in France or abroad, or from public or private research centers.

L'archive ouverte pluridisciplinaire **HAL**, est destinée au dépôt et à la diffusion de documents scientifiques de niveau recherche, publiés ou non, émanant des établissements d'enseignement et de recherche français ou étrangers, des laboratoires publics ou privés.



HAL Authorization

N. Fortunati¹, M.G. Catalano², F. Marano¹, V. Mugoni¹, M. Pugliese², O. Bosco², F. Mainini³, G. Boccuzzi^{1,2}

THE pan-DAC INHIBITOR LBH589 IS A MULTI-FUNCTIONAL AGENT IN BREAST CANCER CELLS: CYTOTOXIC DRUG AND INDUCER OF SODIUM- IODIDE SYMPORTER (NIS).

¹Oncological Endocrinology, AOU San Giovanni Battista, ²Department of Clinical Pathophysiology, University of Turin, Turin, Italy; ³Novartis Farma S.p.A. - Origgio (VA), Italy.

Corresponding Author and Reprints Requests: Prof. Giuseppe Boccuzzi, Dept. Clinical Physiopathology, Via Genova 3, 10126 Torino, Italy; tel.+39-011-6705399; fax. +39-011-6705366; e-mail:giuseppe.boccuzzi@unito.it

ABSTRACT

New drugs with anti-tumour activity, also able to modify the expression of selected molecules, are under evaluation in breast cancer which is becoming resistant to conventional treatment, or in metastatic disease. The sodium-iodide symporter (NIS), which mediates iodide uptake into thyroid cells, and is the molecular basis of radioiodine imaging and therapy in thyroid cancer, is also expressed in a large portion of breast tumours. Since NIS expression in breast cancer is not sufficient for a significant iodide uptake, drugs able to induce its expression and correct function are under evaluation. In the present study, we report for the first time that the pan-deacetylase (DAC) inhibitor LBH589 (panobinostat) significantly induced NIS, both as mRNA and as protein, through the increase of NIS promoter activity, with the final consequence of obtaining a significant up-take of iodide in MCF7, T47D, and MDA-MB231 breast cancer cells. Moreover, we observed that LBH589 causes a significant reduction in cell viability of estrogen-sensitive and –insensitive breast cancer cells within nanomolar range. The anti-tumour effect of LBH589 is sustained by apoptosis induction and cell cycle arrest in G₂/M. In conclusion, our data suggest that LBH589 might be a powerful tool in the management of breast cancer due to its multiple effects and support a potential application of LBH589 in the diagnosis and treatment of this disease.

KEYWORDS

DAC-inhibitors; breast cancer; NIS; targeted therapy; epigenetic

INTRODUCTION

Breast cancer is the most common cancer in women all over the world [1]. Even though its management has become more and more successful over time, owing to the different available therapeutic strategies [2], both metastatic disease and cancer which are becoming resistant to conventional treatment are emerging problems [3, 4]. New drugs with anti-tumour activity and/or able to modify the expression of selected molecules in these situations are under evaluation.

The sodium/iodide symporter (NIS) has been receiving a good deal of attention, both for its function that is requisite for potential clinical application, and for its sensitivity to a number of agents able to induce/increase its cell expression. NIS is a transmembrane glycoprotein mainly expressed in thyrocytes, functioning as iodide carrier [5]. The expression and correct functioning of NIS in differentiated thyroid cancer is the molecular requisite for successful radioiodide therapy in this neoplasm [6]. NIS is also expressed in lactating mammary glands, favouring iodide concentration in milk, and in more than 80 % of human breast carcinomas [7]. Although NIS expression is present and intense in a majority of invasive breast cancers, radioiodide accumulation has been observed in only a small fraction of cases [8, 9, 10]. The achievement of a good level of expression of NIS is regarded as a promising new strategy to enable the use of radioiodide for imaging and treatment of breast cancer [11, 12].

In non neoplastic breast cells, estrogens, oxytocin and prolactin, mainly acting in concert, were reported to induce NIS [7]. In breast cancer cells, many authors reported that retinoic acid is a powerful enhancer of NIS expression especially in association with corticosteroids [12-14]. Furthermore, in one report it was also observed that retinoic acid and dexamethasone treatment determined a significant ^{131}I -induced cytotoxicity in breast cancer cells [15].

NIS expression, in both thyroid and non-thyroid cells, is also regulated by epigenetic phenomena. NIS gene silencing can be related to the level of histone acetylation; in fact,

compounds like Trycostatin A (TSA), sodium butyrate (NaB) and valproic acid (VPA), that belong to the decetylase inhibitor (DAC-inhibitor) group, stimulate NIS expression in thyroid cancer cells [16-18]. DAC-inhibitors [19, 20] could also be used to control NIS expression inducing radioiodine sensitivity in different human extra-thyroid tumours such as breast cancer. **Actually, it was reported that both** TSA and NaB greatly increased NIS mRNA also in breast cancer MCF-7 cell line [21].

The aim of the present work was to evaluate the ability of the powerful pan-DAC inhibitor LBH589 (panobinostat) [22] to induce the expression of functional NIS in breast cancer cells with different estrogen sensitivity.

MATERIALS AND METHODS

Cell lines and reagents

Estrogen receptor-positive MCF-7 and T47D and estrogen receptor-negative MDA-MB 231 cells were purchased from ECACC (Salisbury, UK).

Cells were routinely maintained at 37°C, in 5% CO₂ and 95 % humidity, in RPMI 1640 (Sigma, St Louis, MO, USA) with 100 IU/ml penicillin and 100 µg/ml streptomycin added, supplemented with 10% heat inactivated FCS (Euroclone, Wetherby, West York, UK).

LBH589 was provided by Novartis Pharma AG (Basel, Switzerland), prepared as a 5 mM stock solution in DMSO and stored at -20°C.

Immunoblotting

To evaluate the effect of LBH589 on histone H4 acetylation state, breast cancer cells, after treatment with LBH589 (5-100 nM), were harvested and lysed in the presence of 200 µl RIPA buffer (1% NP40, 0.5% desoxycholate sodium, 0.1% SDS in PBS pH 7.4, with 10 mg/ml PMSF, 30µl/ml aprotinin and 100mM sodium orthovanadate) and incubated on ice for 30 min; cells were then centrifuged for 20 min at 15,000 x g at 4°C, and clear supernatants used. SDS-PAGE was performed on gels, loading 40 µg protein/well. Separated proteins were electro-transferred onto PVDF membrane and probed with anti-acetyl-histone H4 antibody (06-598, 1:1000 dilution, Upstate, Lake Placid, NY, USA). The membrane was then stripped and re-probed with an anti-GAPDH antibody (1:10000 dilution, Sigma, Saint Louis, MI, USA) to check protein loading. Proteins were detected with Pierce Super Signal chemiluminescent substrate following the manufacturer's instructions. Bands were photographed and analyzed using Kodak 1D Image Analysis software.

Cytotoxic activity

To evaluate the LBH589 cytotoxic activity, MCF-7, T47D and MDA-MB 231 cells were seeded at 4×10^3 cells/well in 96-well plates (Corning, New York, NY, USA) in culture medium plus 10% heat-inactivated FCS. After 24 hours, cells were exposed to increasing concentration of LBH589 (1-200 nM). After 72 hours incubation cell viability was assessed using the Cell Proliferation Reagent WST-1 (Roche Applied Science, Penzberg, Germany), following manufacturer's instructions. Four replicate wells were used to determine each data point. Three response parameters, median growth inhibition (GI_{50}), total growth inhibition (TGI) and median lethal concentration (LC_{50}) were calculated for each cell line. The GI_{50} corresponds to the concentration of the compound that inhibits 50% net cell growth; TGI value is the concentration of the compound leading to total growth inhibition; LC_{50} value is the concentration of the compound leading to 50% net cell death.

Apoptosis Detection - Cell Death Detection ELISA

For apoptosis studies, 4×10^3 cells were seeded in 96-well plates and treated with LBH589, using the same schedule as for the viability assay. After treatment, apoptosis was evaluated using Cell Death Detection ELISA ^{PLUS} (Roche Applied Science, Penzberg, Germany) following manufacturer's instructions. Apoptosis was expressed as enrichment factor, calculated as a fraction of the absorbance of treated cells versus untreated controls.

Cell cycle analysis

Cells were treated with LBH589 up to 72 hours. At different times (24, 48 and 72 hours), all cells were collected, fixed in 70% ethanol for 30 minutes on ice and incubated in propidium iodide solution (20 μ g/ml propidium iodide, 0.2 mg/ml RNaseA in PBS) for 1 hour at room temperature. The cell population was analyzed by flow cytometry.

Gene expression evaluation with Real Time PCR

Cells (1×10^6) were seeded in 75cm^2 flasks and treated with LBH589 (5-100nM).

Total RNA was extracted using TRIzol Reagent (Invitrogen Ltd, Paisley, UK), as previously described. DNase I was added to remove remaining genomic DNA. 1 μg of total RNA was reverse-transcribed with iScript cDNA Synthesis Kit (BioRad Laboratories, Inc.), following manufacturer's protocol.

Primers (Table 1) were designed using Beacon Designer 5.0 software according to parameters outlined in the BioRad iCycler Manual. Specificity of primers was confirmed by BLAST analysis. Real-time PCR was performed using a BioRad iQ iCycler Detection System (BioRad Laboratories, Inc.) with SYBR green fluorophore. Reactions were performed in a total volume of 25 μl , including 12.5 μl IQ SYBR Green Supermix (BioRad Laboratories, Inc.), 1 μl of each primer at 10 μM concentration, and 5 μl of the previously reverse-transcribed cDNA template. Protocol for primer set was optimised using seven serial 5X dilutions of template cDNA obtained from cells in basal conditions. The protocol used is as follows: denaturation (95°C for 5 min), amplification repeated 40 times (95°C for 15 sec, 60°C for 1 min). A melting curve analysis was performed following every run to ensure a single amplified product for every reaction. All reactions were carried out at least three times for each sample.

Luciferase Transcription Assay

Cells (2.5×10^5) were seeded in 6-well plates. 24 hours after seeding, cells were transfected with 1 μg of NIS-luc plasmid/well using Lipofectin Reagent (Invitrogen Ltd, Paisley, UK). The plasmid, a kind gift of Prof. G. Damante (Dipartimento di Scienze & Tecnologie

Biomediche, Policlinico Universitario di Udine, Udine) contains 2.2 kb of 5' genomic sequence for the NIS promoter and the minimal promoter is linked to the luciferase (LUC) gene as reporter [23]. After 24 hours, cells were treated with LBH589 (10-50 nM) for a further 24 hours. At completion, luciferase activity was assayed with the Luciferase Assay System (Promega Corporation, Madison, WI, USA).

NIS Immunofluorescence microscopy

Cells (5×10^5) were seeded in 6-well plates. 24 hours after seeding, cells were treated with 25 nM LBH589 for 48 hours. After treatment, cells were fixed in acetone/methanol (1:1) at -20°C for 20 minutes, washed with PBS containing 0.5% Triton X-100, 0.05% NaN_3 and 1% Horse Serum and incubated with monoclonal anti-NIS antibody (1:1000) (FP5A, Thermo Fisher Scientific, Fremont CA, USA) in PBS at 4°C overnight. Then cells were washed with PBS containing 0.5% Triton and 0.05% NaN_3 for 10 minutes for three times followed by detection with anti-mouse Cy3-conjugated secondary antibody (1:1000), (GE Healthcare Europe, GmbH, Milano, Italy) in PBS plus 0.5% Triton and 0.05% NaN_3 for 2 hours and nuclei counterstaining with Hoechst 33258 (500 ng/ml in DMSO) in PBS. Cells were washed twice with distilled water and mounted with 50% glycerol-PBS media.

^{125}I uptake by cells

Cells (2×10^4) were seeded into 24-well plates and incubated with LBH589 (5-100nM) for 48 hours. ^{125}I uptake was assayed as reported elsewhere [18]. Briefly, after aspirating drug-containing medium, cells were washed with 1 ml HBSS (Invitrogen, Groningen, The Netherlands). ^{125}I uptake was initiated by adding 0.5 ml HBSS containing 2 μCi carrier-free Na^{125}I (PerkinElmer Life and Analytical Sciences, Inc., Boston, USA) and 30 μM NaI. Incubation was conducted for 30 min at 37°C and terminated by removing the radioactive

medium and washing the cells twice with ice-cold HBSS. Cells were then solubilized with 1 ml of absolute ethanol for 20 min, after which cell-associated iodide was measured in a γ -counter.

Statistical analysis

Data are expressed throughout as means \pm SEM, calculated from at least three different experiments. Comparison between groups was performed with analysis of variance (one-way ANOVA) and the threshold of significance was calculated with the Bonferroni test. Statistical significance was set at $P < 0.05$.

RESULTS

Anti-tumor activity of LBH589

LBH589 acts as deacetylase inhibitor (DAC inhibitor) in breast cancer cells, inducing hyperacetylation of histone H4, as reported in figure 1, and is a powerful cytotoxic agent causing a significant reduction in cell viability of MCF7, T47D, and MDA-MB231 cells (figure 2). Furthermore, in figure 2 we report the calculated values of GI₅₀, TGI, LC₅₀, that are all in nanomolar range.

The mechanisms of action elicited by LBH589 to exert its cytotoxic activity in breast cancer cells are reported in figure 3. Actually, LBH589 was able to induce apoptosis in a dose-dependent manner (panels on the left), and a significant growth arrest in G₂/M (panels on the right). These effects were observed both in ER-positive and ER-negative breast cancer cells, even though higher doses of LBH589 were required in MDA-MB 231.

Effect of LBH589 on NIS Expression and Function

The ability of LBH589 to induce the Na⁺/I symporter in breast cancer cells was thoroughly evaluated.

NIS was first studied as mRNA expression. As reported in figure 4 (panels on the left), the expression of NIS mRNA was significantly induced by LBH589 in a dose-dependent manner in all the three breast cancer cell lines. In addition, in figure 4 (panels on the right) we report the effect of LBH589 on the activity of NIS promoter, evaluated with a luciferase assay, demonstrating that LBH589 is effective in inducing NIS promoter activity in the cell lines under study.

The induction of NIS gene transcription has to go together with the presence of NIS protein in cells, and this was clearly demonstrated in MCF7, T47D, and MDA-MB231 breast cancer

cells under LBH589 treatment as shown in figure 5 (upper panels). Moreover, the symporter induced by LBH589 confers the ability of up-taking iodide to breast cancer cells (figure 5, lower panels).

In all these experiments, LBH589 was effective in inducing a functional NIS either in ER-positive and ER-negative breast cancer cells, even though ER-positive cells were shown to be more sensitive to the compound.

DISCUSSION

The present study shows the potent cytotoxic activity of LBH589 in both estrogen-sensitive and –insensitive cells and, especially, highlights its ability to induce the sodium/iodide symporter (NIS) in breast cancer cells that, as a consequence, become able to concentrate radioactive iodide.

At present four different trials are recruiting patients with recurrent or metastatic breast cancer for treatment with LBH589 both in monotherapy and in association with trastuzumab and paclitaxel (www.clinicaltrials.gov), although knowledge concerning the precise mechanism of LBH589 cytotoxicity in breast cancer cells is still incomplete. The primary molecular effect of DAC-inhibitors is to alter the acetylation status of the core histone proteins, facilitating chromatin remodelling and modification in gene expression [24]. It has been reported that 100 and 200 nM LBH589 alone or in association with 4OHTamoxifene were effective in reducing the growth of ER-negative MDA-MB 231 cells [25] and that LBH589 significantly reduced the viability of ER-positive MCF-7 cells [26] and increased the fraction of dying cells after radiation exposure [27]. Here we demonstrate that LBH589 alone, in nanomolar range which is far from toxic range in humans [28], is able to reduce the viability of ER-positive MCF-7 and T47D and ER-negative MDA-MB 231 breast cancer cells. Besides this, we show that the mechanisms underlying its effect on cell viability include both apoptosis induction and cell cycle arrest, as already reported for other DAC-inhibitors [29].

We demonstrate in particular that LBH589 induces and enhances NIS expression in breast cancer cells. The efficiency of NIS is at the basis of successful treatment of differentiated thyroid cancer thus the possibility of increasing NIS expression in thyroid neoplasms which have lost the ability to uptake and concentrate iodide is under extensive evaluation [30, 31].

Similarly, as NIS is expressed in quite a significant percentage of breast cancers [7], NIS-mediated radionuclide imaging and targeted therapy could be useful goals in breast cancer

management. Unfortunately, although NIS expression is present and intense in the majority of invasive breast cancers, only a small fraction of NIS-positive breast cancers are able to concentrate iodide, due to low cell surface NIS levels and cell surface trafficking defects, commonly found in breast tumours [32]. Therefore, research efforts should focus on strategies to induce/increase NIS expression in breast cancer as it has to be adequately expressed in order to get a considerable iodide uptake. A large number of agents with very different mechanisms of action have been utilized to stimulate NIS expression, such as re-differentiating agents [12, 15, 33-35], or compounds that are reported to physiologically regulate NIS in breast cells [7, 36-38]. Retinoid acid, especially in the presence of other compounds such as dexamethasone, induce NIS and iodide uptake in breast cancer cells [12, 15, 33-35] and in animal models [39]. Even though these findings suggest their potential clinical use, as yet no clinical trials have been presently designed to this aim and additional strategies can be foreseen.

Epigenetic modifications, such as histone deacetylation, have been considered possible causes of NIS silencing in cancer cells. Our data clearly demonstrate that the deacetylase-inhibitor LBH589 induced NIS, both as mRNA and as a protein, and determined a significant iodide uptake in breast cancer cell lines. Furthermore, the observation that LBH589 strongly activates the transcription of the construct *luc*-NIS that we had transfected in breast cancer cells both ER-positive (MCF-7 and T47D) and –negative (MDA-MB 231) is consistent with a direct effect of the drug on NIS promoter. Our data suggest that DAC-inhibitor treatment could therefore modify the acetylation state of NIS promoter allowing its transcription and expression as already reported for other DAC-inhibitors [19]. The effect was evident regardless of ER status, even if both ER-positive MCF-7 and T47D cells are more sensitive than ER-negative MDA-MB 231 cells (the increase in NIS expression in ER-positive cells was about three times higher than in ER-negative cells). Thus, our study is the first report

concerning the possibility to induce not only NIS mRNA expression but also iodide accumulation in breast cancer cells by using the pan-DAC inhibitor, LBH589.

In conclusion, the pan-DAC inhibitor LBH589 is a powerful anti-tumour agent and is able to induce NIS and iodide accumulation in breast cancer cells. The effects of LBH589 are independent from estrogen-sensitivity and ER α -status of cells, making the drug of valuable use for diagnostic and therapeutic application in both estrogen-sensitive and –insensitive tumours.

ACKNOWLEDGMENTS

We thank Novartis Pharma AG, Basel, Switzerland for providing us LBH589; Giuseppe Damante, Dipartimento di Scienze e Tecnologie Biomediche, Policlinico Universitario di Udine, Udine, Italy, for providing us with the *luc*-NIS construct; Daniela Taverna and Alessandra Solero, Dipartimento di Scienze Oncologiche, Università di Torino and M. B. C., Torino, Italy, for helping us with luciferase experiments.

This study was supported by the Project “Alfieri 2007”, Fondazione CRT, Torino, the Special Project “Oncology”, Compagnia San Paolo, Torino, by MIUR and by Regione Piemonte to Giuseppe Bocuzzi

REFERENCES

1. Parkin DM, Bray F, Ferlay J, Pisani P (2005) Global cancer statistics, 2002, CA Cancer J Clin 55: 74-108.
2. Berry DA, Cronin KA, Plevritis SK, Fryback DG, Clarke L, Zelen M, Mandelblatt JS, Yakovlev AY, Habbema JD, Feuer EJ (2005) Cancer Intervention and Surveillance Modeling Network (CISNET) Collaborators. Effect of screening and adjuvant therapy on mortality from breast cancer. N Engl J Med 353:1784-92.
3. Gonzalez-Angulo AM, Morales-Vasquez F, Hortobagyi GN (2007) Overview of resistance to systemic therapy in patients with breast cancer. Adv Exp Med Biol 608: 1-22
4. Cardoso F, Bedard PL, Winer EP, Pagani O, Senkus-Konefka E, Fallowfield LJ, Kyriakides S, Costa A, Cufer T, Albain KS, ESO-MBC Task Force (2009) International guidelines for management of metastatic breast cancer: combination vs sequential single-agent chemotherapy. J Natl Cancer Inst 101: 1174-81
5. Dai G, Levy O, Carrasco N (1996) Cloning and characterization of the thyroid iodide transporter. Nature 379: 458–46
6. Reiners C, Dietlein M, Luster M (2008) Radio-iodine therapy in differentiated thyroid cancer: indications and procedures. Best Pract Res Clin Endocrinol Metab 22: 989-1007.
7. Tazebay UH, Wapnir IL, Levy O, Dohan O, Zuckier LS, Zhao QH, Deng HF, Amenta PS, Fineberg S, Pestell RC, Carrasco N (2000) The mammary gland iodide transporter is expressed during lactation and in breast cancer. Nat Med 6: 871–878.
8. Wapnir IL, van de Rijn M, Nowels K, Amenta PS, Walton K, Montgomery K, Greco RS, Dohán O, Carrasco N (2003) Immunohistochemical profile of the sodium/iodide

- symporter in thyroid, breast, and other carcinomas using high density tissue microarrays and conventional sections. *J Clin Endocrinol Metab* 88: 1880-8
9. Wapnir IL, Goris M, Yudd A, Dohan O, Adelman D, Nowels K Carrasco N (2004) The Na⁺/I⁻-symporter mediates iodide uptake in breast cancer metastases and can be selectively down-regulated in the thyroid. *Clin Cancer Res* 10: 4294–302
 10. Moon DH, Lee SJ, Park KY, Park KK, Ahn SH, Pai MS, Chang H, Lee HK, Ahn IM (2001) Correlation between ^{99m}Tc pertechnetate uptakes and expressions of human sodium iodide symporter gene in breast tumor tissues. *Nucl Med Biol* 28: 829–34
 11. Boelaert K, Franklyn JA (2003) Sodium iodide symporter: a novel strategy to target breast, prostate, and other cancers? *Lancet* 361: 796-797
 12. Kogai T, Kanamoto Y, Li AI, Che LH, Ohashi E, Taki K, Chandraratna RA, Saito T, Brent GA (2005) Differential regulation of sodium/iodide symporter gene expression by nuclear receptor ligands in MCF-7 breast cancer cells. *Endocrinology* 146: 3059–69.
 13. Willhauck MJ, Sharif-Samani B, Senekowitsch-Schmidtke R, Wunderlich N, Göke B, Morris JC, Spitzweg C (2008) Functional sodium iodide symporter expression in breast cancer xenografts in vivo after systemic treatment with retinoic acid and dexamethasone. *Breast Cancer Res Treat* 109: 263-72.
 14. Ohashi E, Kogai T, Kagechika H, Brent GA (2009) Activation of the PI3 kinase pathway by retinoic acid mediates sodium/iodide symporter induction and iodide transport in MCF-7 breast cancer cells. *Cancer Res* 69: 3443-50.
 15. Unterholzner S, Willhauck MJ, Cengic N, Schütz M, Göke B, Morris JC, Spitzweg C (2006) Dexamethasone stimulation of retinoic Acid-induced sodium iodide symporter expression and cytotoxicity of ¹³¹I in breast cancer cells. *J Clin Endocrinol Metab* 91: 69-78.

16. Kitazono M, Robey R, Zhan Z, Sarlis NJ, Skarulis MC, Aikou T, Bates S, Fojo T (2001) Low concentrations of the histone deacetylase inhibitor, depsipeptide (FR901228), increase expression of the Na⁽⁺⁾/I⁽⁺⁾ symporter and iodine accumulation in poorly differentiated thyroid carcinoma cells. *J Clin Endocrinol Metab* 86: 3430–3435
17. Zarnegar R, Brunaud L, Kanauchi H, Wong M, Fung M, Ginzinger D, Duh QY, Clark OH (2002) Increasing the effectiveness of radioactive iodine therapy in the treatment of thyroid cancer using Trichostatin A, a histone deacetylase inhibitor. *Surgery* 132: 984–990
18. Fortunati N, Catalano MG, Arena K, Brignardello E, Piovesan A, Boccuzzi G (2004) Valproic acid induces the expression of the Na⁽⁺⁾/I⁽⁺⁾ symporter and iodine uptake in poorly differentiated thyroid cancer cells. *J Clin Endocrinol Metab* 89: 1006–1009
19. Botrugno OA, Santoro F, Minucci S (2009) Histone deacetylase inhibitors as a new weapon in the arsenal of differentiation therapies of cancer. *Cancer Lett* 280: 134-44
20. Lee MJ, Kim YS, Kummar S, Giaccone G, Trepel JB (2008) Histone deacetylase inhibitors in cancer therapy. *Curr Opin Oncol* 20: 639-49
21. Puppin C, D'Aurizio F, D'Elia AV, Cesaratto L, Tell G, Russo D, Filetti S, Ferretti E, Tosi E, Mattei T, Pianta A, Pellizzari L, Damante G (2005) Effects of histone acetylation on sodium iodide symporter promoter and expression of thyroid-specific transcription factors. *Endocrinology* 146: 3967-74
22. Atadja P (2009) Development of the pan-DAC inhibitor panobinostat (LBH589): successes and challenges. *Cancer Lett* 280: 233-41
23. Behr M, Schmitt TL, Espinoza CR, Loos U (1998) Cloning of a functional promoter of the human sodium/iodide-symporter gene. *Biochem J* 331: 359–363

24. Bolden JE, Peart MJ, Johnstone RW (2006) Anticancer activities of histone deacetylase inhibitors. *Nat Rev Drug Discov* 5: 769-784
25. Zhou Q, Atadja P, Davidson NE (2007) Histone deacetylase inhibitor LBH589 reactivates silenced estrogen receptor alpha (ER) gene expression without loss of DNA hypermethylation. *Cancer Biol Ther* 6: 64-9
26. Fiskus W, Ren Y, Mohapatra A, Bali P, Mandawat A, Rao R, Herger B, Yang Y, Atadja P, Wu J, Bhalla K (2007) Hydroxamic acid analogue histone deacetylase inhibitors attenuate estrogen receptor-alpha levels and transcriptional activity: a result of hyperacetylation and inhibition of chaperone function of heat shock protein 90. *Clin Cancer Res* 13: 4882-90
27. Kim IA, No M, Lee JM, Shin JH, Oh JS, Choi EJ, Kim IH, Atadja P, Bernhard EJ (2009) Epigenetic modulation of radiation response in human cancer cells with activated EGFR or HER-2 signaling: potential role of histone deacetylase 6. *Radiother Oncol*. 92:125-32
28. Giles F, Fischer T, Cortes J, Garcia-Manero G, Beck J, Ravandi F, Masson E, Rae P, Laird G, Sharma S, Kantarjian H, Dugan M, Albitar M, Bhalla K (2006) A phase I study of intravenous LBH589, a novel cinnamic hydroxamic acid analogue histone deacetylase inhibitor, in patients with refractory hematologic malignancies. *Clin Cancer Res* 12: 4628-4635
29. Fortunati N, Bertino S, Costantino L, Bosco O, Vercellinatto I, Catalano MG, Boccuzzi G (2008) Valproic acid is a selective antiproliferative agent in estrogen-sensitive breast cancer cells. *Cancer Lett* 259: 156-64
30. Dohán O, De la Vieja A, Paroder V, Riedel C, Artani M, Reed M, Ginter CS, Carrasco N (2003) The sodium/iodide Symporter (NIS): characterization, regulation, and medical significance. *Endocr Rev* 24: 48-77

31. Furuya F, Shimura H, Suzuki H, Taki K, Ohta K, Haraguchi K, Onaya T, Endo T, Kobayashi T (2004) Histone deacetylase inhibitors restore radioiodide uptake and retention in poorly differentiated and anaplastic thyroid cancer cells by expression of the sodium/iodide symporter thyroperoxidase and thyroglobulin. *Endocrinology* 145: 2865–2875
32. Beyer SJ, Jimenez RE, Shapiro CL, Cho JY, Jhiang SM (2009) Do cell surface trafficking impairments account for variable cell surface sodium iodide symporter levels in breast cancer? *Breast Cancer Res Treat* 115: 205-12
33. Kogai T, Ohashi E, Jacobs MS, Sajid-Crockett S, Fisher ML, Kanamoto Y, Brent GA (2008) Retinoic acid stimulation of the sodium/iodide symporter in MCF-7 breast cancer cells is mediated by the insulin growth factor-I/phosphatidylinositol 3-kinase and p38 mitogen activated protein kinase signaling pathways. *J Clin Endocrinol Metab* 93: 1884-92
34. Dohán O, De la Vieja A, Carrasco N (2006) Hydrocortisone and purinergic signaling stimulate sodium/iodide symporter (NIS)-mediated iodide transport in breast cancer cells. *Mol Endocrinol* 20:1121-37
35. Tanosaki S, Ikezoe T, Heaney A, Said JW, Dan K, Akashi M, Koeffler HP (2003) Effect of ligands of nuclear hormone receptors on sodium/iodide symporter expression and activity in breast cancer cells. *Breast Cancer Res Treat* 79: 335-45
36. Cho JY, Leveille R, Kao R, Rousset B, Parlow AF, Burak WE, Jr, Mazzaferri EL, Jhiang SM (2000) Hormonal regulation of radioiodide uptake activity and NaC/IK symporter expression in mammary glands. *J Clin Endocrinol Metab* 85: 2936–2943
37. Arturi F, Ferretti E, Presta I, Mattei T, Scipioni A, Scarpelli D, Bruno R, Lacroix L, Tosi E, Gulino A, Russo D, Filetti S (2005) Regulation of iodide uptake and

sodium/iodide symporter expression in the MCF-7 human breast cancer cell line. *J Clin Endocrinol Metab.* 90: 2321-6

38. Knostman KA, McCubrey JA, Morrison CD, Zhang Z, Capen CC, Jhiang SM (2007) PI3K activation is associated with intracellular sodium/iodide symporter protein expression in breast cancer. *BMC Cancer* 7:137.
39. Kogai T, Kanamoto Y, Che LH, Taki K, Moatamed F, Schultz JJ, Brent GA (2004) Systemic retinoic acid treatment induces sodium/iodide symporter expression and radioiodide uptake in mouse breast cancer models. *Cancer Res.* 64: 415-22.

LEGEND TO FIGURES

Figure 1 - LBH589 effect on histone acetylation. Acetylation of histone H4 in MCF-7, T47D and MDA-MB231 cells incubated for 24 hours with LBH589 (5-100 nM), was assessed by Western blotting. Equal loading and transfer were verified by re-probing the membranes with anti-GAPDH antibody. The figure shows a typical experiment.

Figure 2 – LBH589 effect of cell viability. Breast cancer cells were incubated with LBH589 (1-200 nM) for 72 hours. After treatment, cell viability was determined by the WST-1 method, and expressed as percentage (untreated controls being 100%). Three response parameters, median growth inhibition (GI_{50}), total growth inhibition (TGI) and median lethal concentration (LC_{50}) were calculated for each cell line, and values are reported in the Table.

Figure 3 – LBH589 effect on apoptosis and cell cycle. *Left Panels:* ELISA detection of DNA-histone complex in MCF-7, T47D and MDA-MB231 cells incubated for 72 hours with LBH589 (1-200 nM). The enrichment factor was calculated as the ratio between the absorbance measurements of treated cells and untreated controls. Results are expressed as means \pm SEM; n = 3. Significance vs untreated cells (0): * P< 0.05; ** P< 0.01; *** P< 0.001. *Right Panels:* Cell cycle analysis was performed by flow cytometry after 72 hour treatment with LBH589 (5-100nM). Results are expressed as means \pm SEM; n = 3. Significance for G_2/M vs untreated cells (0): *P<0.05; **P< 0.01; ***P< 0.001.

Figure 4 –LBH589 effect on NIS mRNA expression and NIS promoter activity. *Left Panels:* NIS mRNA was evaluated with Real Time PCR in MCF-7, T47D and MDA-MB 231 cells treated with 5-100 nM LBH589. Results were normalized for three different housekeeping genes (β -actin, β 2-microglobulin and L13A) and expressed as relative expression fold *vs* untreated controls (0). Results are expressed as means \pm SEM; n = 3. *Right Panels:* breast cancer cells were transiently transfected with a reporter plasmid carrying the luciferase gene under the control of NIS promoter (NIS-*luc*). The luciferase activity was assayed before and after treatment with 10-50 nM LBH589. Data are expressed as mean \pm SEM; n=3.

Figure 5 – LBH589 effects on NIS protein expression and iodide uptake. *Upper Panels:* immunofluorescence for NIS was performed on breast cancer cells: (A) untreated MCF-7 cells, (B) 25 nM LBH589 treated MCF-7 cells; (C) untreated T47D cells; (D) 25 nM LBH 589 treated T47D cells; (E) untreated MDA-MB 231 cells; (F) 25 nM LBH589 treated MDA-MB 231 cells. *Lower Panel:* ^{125}I uptake in breast cancer cells treated with 5-100 nM LBH589 was evaluated as described; data are expressed as mean \pm SEM; n=3. Significance *vs* untreated cells (0) was: *P<0.05; **P< 0.01.

Table 1. Primers for real time PCR

<i>Gene</i>	<i>Primers</i>
NIS	Sense: 5'- CTG CCC CAG ACC AGT ACA TGC C -3' Antisense: 5'- TGA CGG TGA AGG AGC CCT GAA G -3'
β -Actin	Sense: 5'- GCG AGA AGA TGA CCC AGA TC- 3' Antisense: 5'- GGA TAG CAC AGC CTG GAT AG-3'
β 2-Microglobulin	Sense: 5'-AGA TGA GTA TGC CTG CCG TGT G-3' Antisense: 5'-TCA ACC CTC CAT GAT GCT GCT TAC-3'
L13A	Sense: 5'-GCA AGC GGA TGA ACA CCA ACC-3' Antisense: 5'-TTG AGG GCA GCA GGA ACC AC-3'

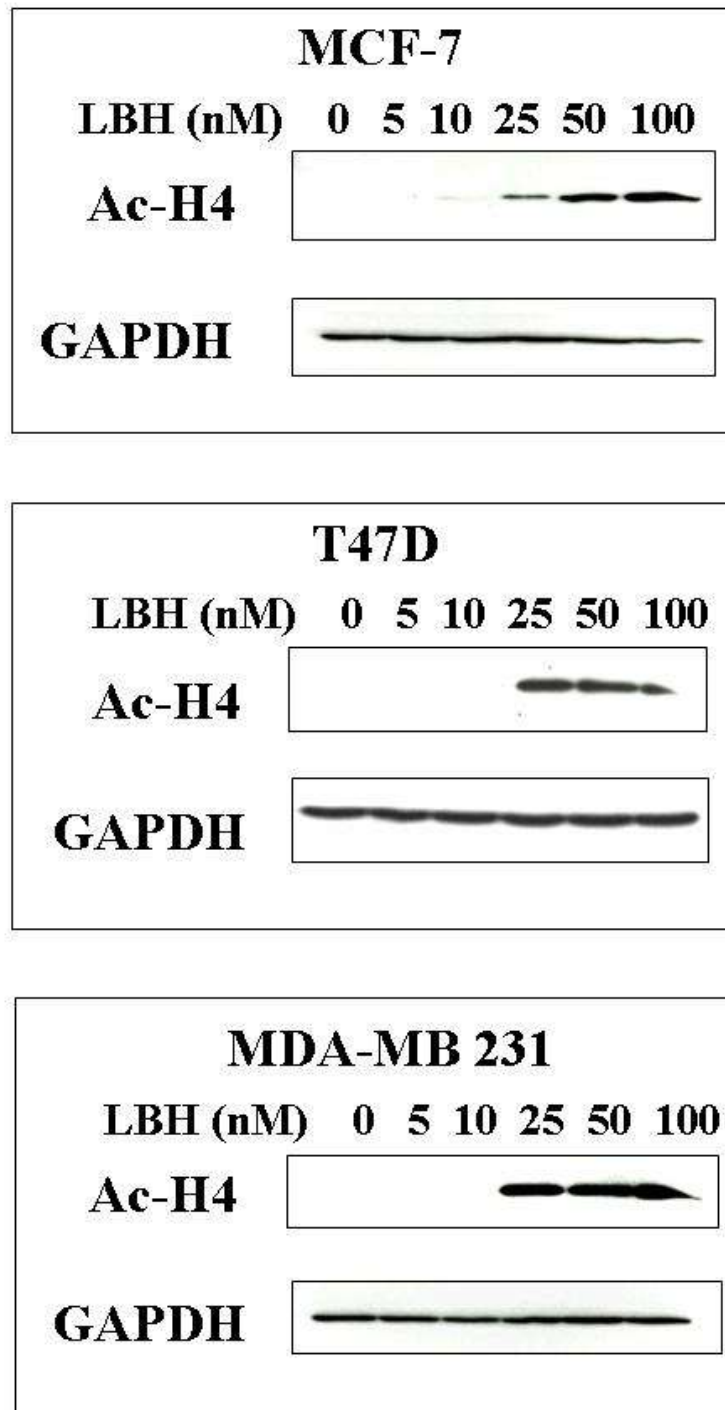
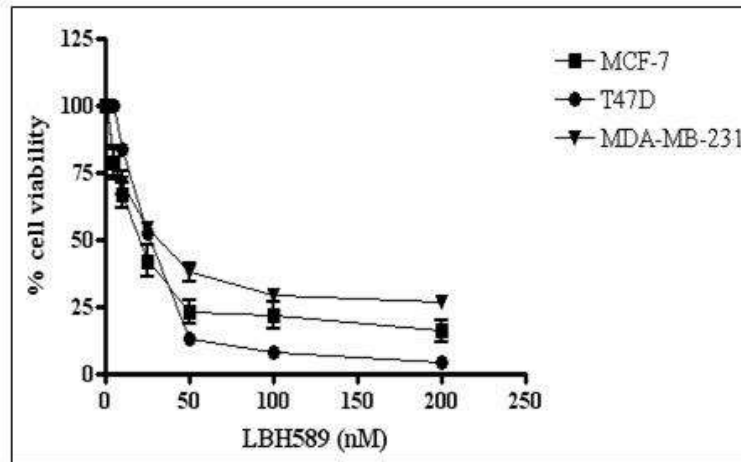


Figure 1



	GI ₅₀ (nM)	TGI (nM)	LC ₅₀ (nM)
MCF-7	11.9 ± 2.6	33.1 ± 1.7	50.9 ± 2.3
T47D	10.9 ± 3.6	28.0 ± 3.7	42.3 ± 3.5
MDA-MB 231	18.1 ± 2.1	44.7 ± 6.8	58.0 ± 2.8

Figure 2

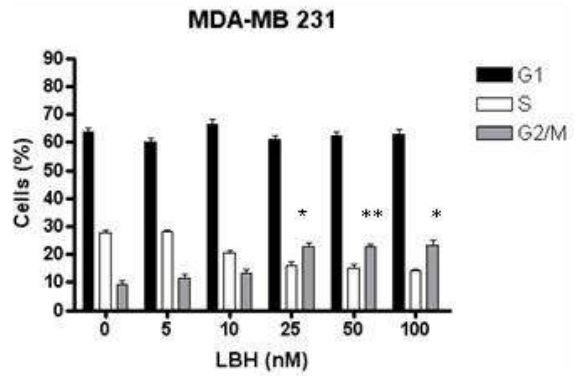
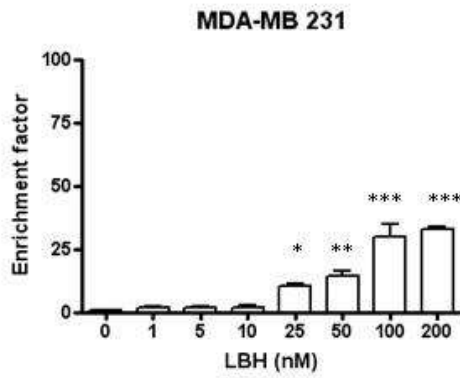
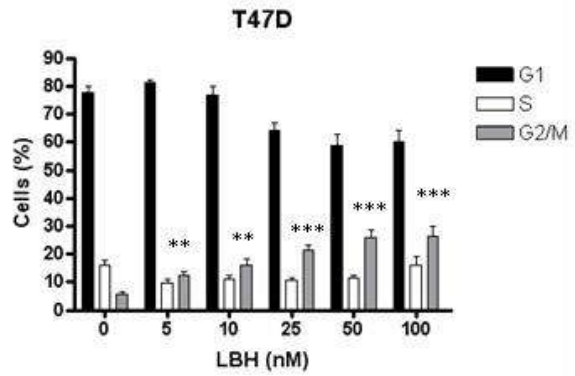
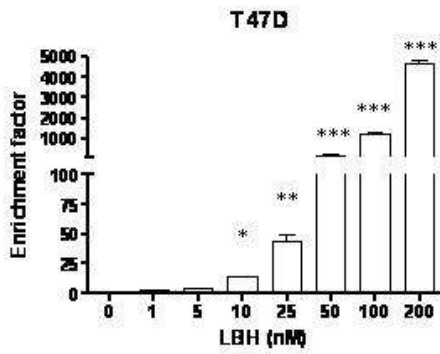
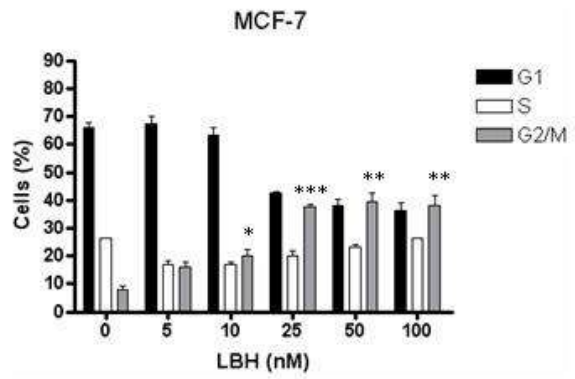
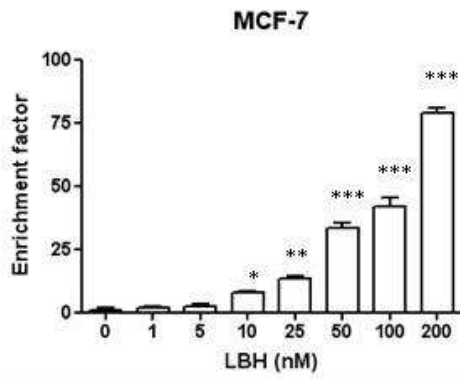


FIGURE 3

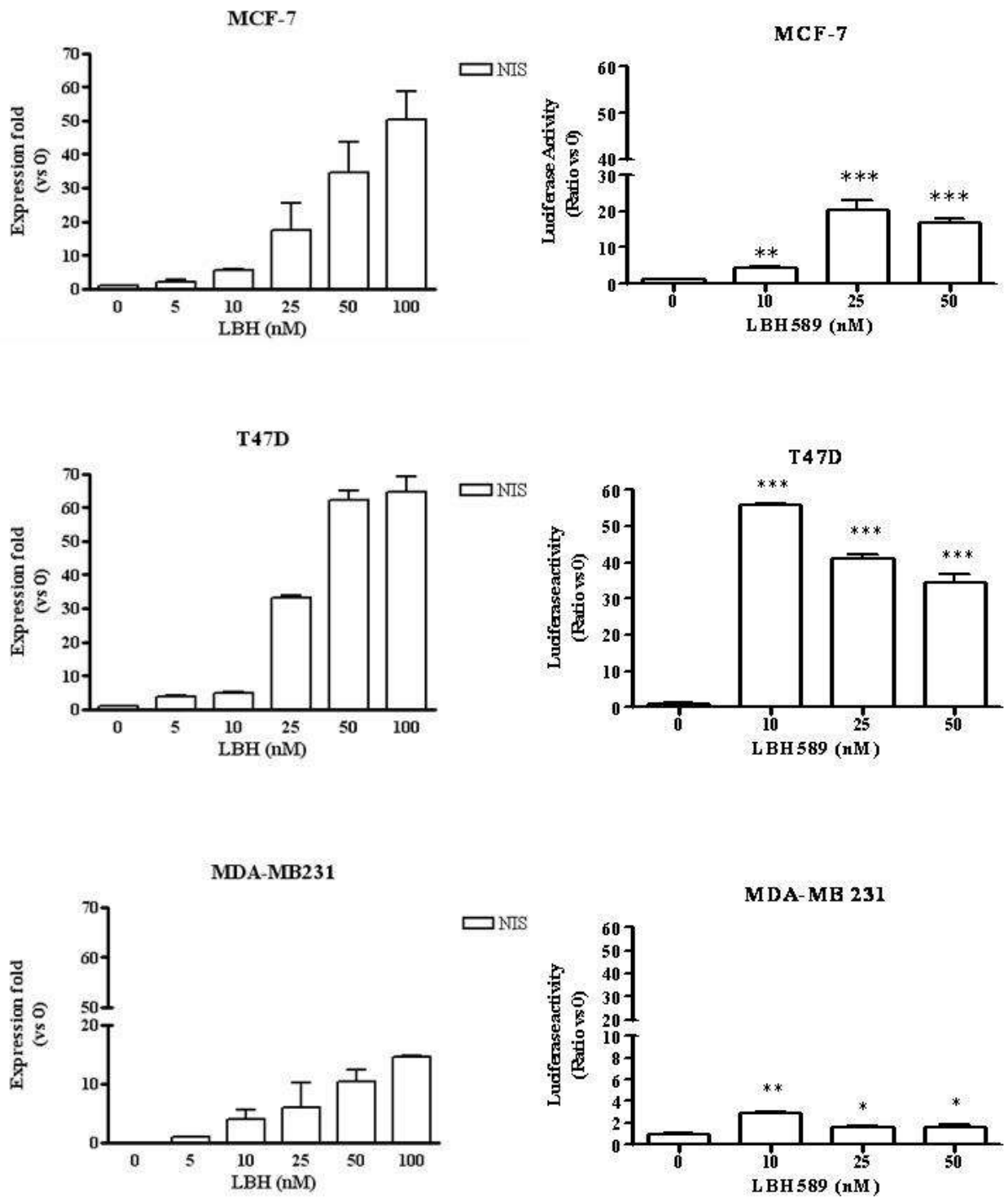


FIGURE 4

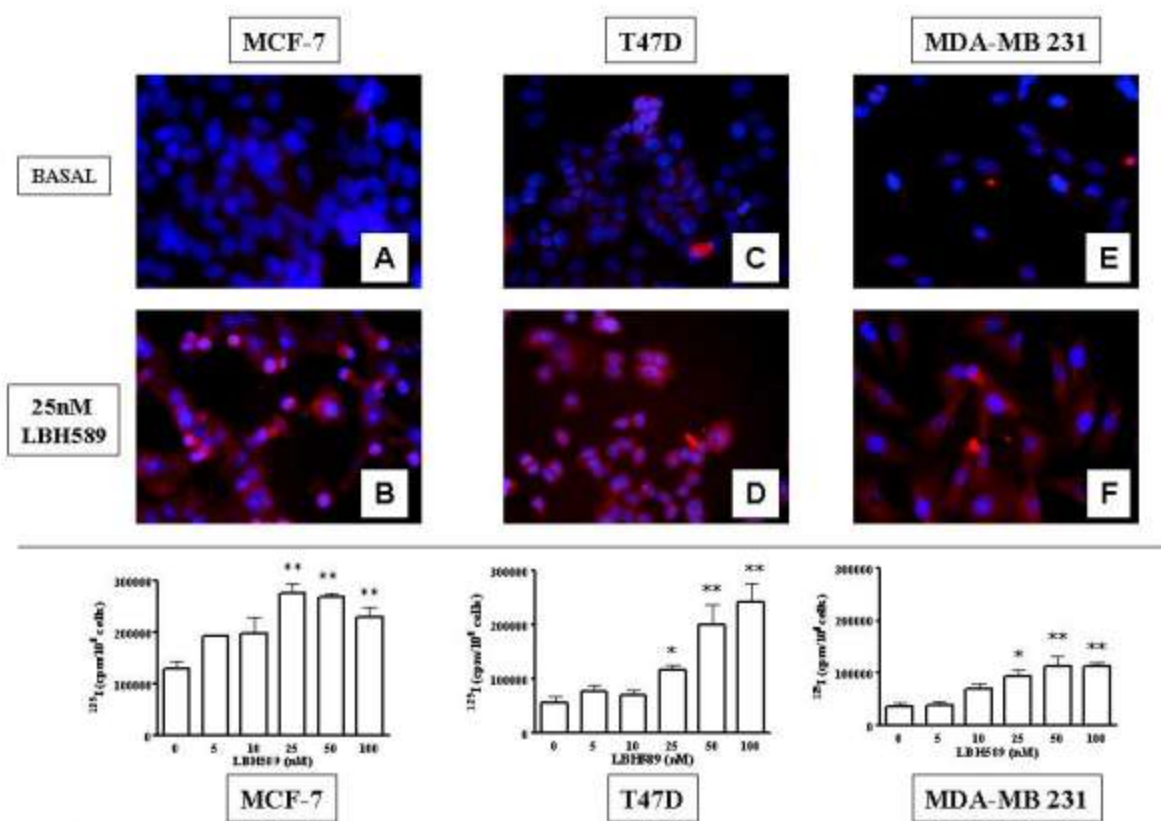


FIGURE 5