



**HAL**  
open science

## Time-resolved quantitative multiphase interferometric imaging of a highly focused ultrasound pulse

Fabien Souris, Jules Grucker, Philippe Jacquier, Jacques Dupont-Roc, Arnaud Arvengas, Frédéric Caupin

► **To cite this version:**

Fabien Souris, Jules Grucker, Philippe Jacquier, Jacques Dupont-Roc, Arnaud Arvengas, et al.. Time-resolved quantitative multiphase interferometric imaging of a highly focused ultrasound pulse. *Applied optics*, 2010, 49 (31), pp.6127-6133. 10.1364/AO.49.006127 . hal-00534036

**HAL Id: hal-00534036**

**<https://hal.science/hal-00534036>**

Submitted on 8 Nov 2010

**HAL** is a multi-disciplinary open access archive for the deposit and dissemination of scientific research documents, whether they are published or not. The documents may come from teaching and research institutions in France or abroad, or from public or private research centers.

L'archive ouverte pluridisciplinaire **HAL**, est destinée au dépôt et à la diffusion de documents scientifiques de niveau recherche, publiés ou non, émanant des établissements d'enseignement et de recherche français ou étrangers, des laboratoires publics ou privés.

# Time-resolved quantitative multiphase interferometric imaging of a highly focused ultrasound pulse

Fabien Souris,<sup>1</sup> Jules Grucker,<sup>1</sup> Jacques Dupont-Roc,<sup>1</sup> Philippe Jacquier,<sup>1</sup>  
Arnaud Arvengas,<sup>2</sup> and Frédéric Caupin,<sup>2</sup>

<sup>1</sup>*Laboratoire Kastler Brossel, ENS, UPMC-Paris 6, CNRS  
24 rue Lhomond, 75005 Paris, France*

<sup>2</sup>*Laboratoire de Physique Statistique, ENS, UPMC-Paris 6, Université Paris Diderot,  
CNRS  
24 rue Lhomond, 75005 Paris, France*

\*Corresponding author: [fabien.souris@lkb.ens.fr](mailto:fabien.souris@lkb.ens.fr)

Interferometric imaging is a well established method to image phase objects by mixing the image wavefront with a reference one on a CCD camera. It has also been applied to fast transient phenomena, mostly through the analysis of single interferograms. It is shown that for repetitive phenomena multiphase acquisition brings significant advantages. A 1 MHz focused sound field emitted by a hemispherical piezotransducer in water is imaged as an example. Quantitative image analysis provides high resolution sound field profiles. Pressure at focus determined by this method agrees with measurements from a fiber-optic probe hydrophone. This confirms that multiphase interferometric imaging can indeed provide quantitative measurements. © 2010 Optical Society of America

*OCIS codes:* 100.3175 *Interferometric imaging*, 110.4155 *Multiframe image processing*, 120.5050 *Phase measurement*, 110.5086 *Phase unwrapping*, 100.3190 *Inverse problems*, 120.5475 *Pressure measurement*.

## 1. Introduction

Interferometric imaging is a common method to investigate phase objects (see for instance [1–3] and ref. therein). Sound waves are examples of such objects. Compared to other imaging methods such as Schlieren imaging (see for instance [4]), or stress induced birefringence imaging [5], interferometric imaging has the advantage of providing directly quantitative

measurements. Refractive index maps can be computed from those measurements, and in the case of a sound wave, acoustic pressure can be determined. There are two methods to reconstruct phase maps from recorded interferograms. Fringe analysis [2, 6] has the advantage of requiring only one image (or two if fringe shift is used), but implies a reduced spatial resolution and phase ambiguities. In multiphase (or phase shifting) interferometry, the map of the optical phase is extracted from several images taken while changing the phase of the reference beam. Applying this method to time dependent phenomena requires special adaptations to circumvent the slow acquisition rate of common cameras. When the phenomenon is a steady sinusoidal oscillation with sufficient amplitude, information can be extracted from time averaged images [7]. This is the case for the popular TV holography method [8]. For fast transient phenomena, a time sampling is to be made by using pulsed light sources to get images of the object at particular times. These quasi-instantaneous images registered by the CCD camera are read on much longer times. Recording the complete evolution is possible for repetitive transient phenomena by varying the delay between the laser pulse and the triggered phenomenon. Depending on the time scale of the phenomenon under study, pulsed light sources such as pulsed LED [9, 10], Q-switched lasers [11, 12], or even femtosecond laser [13–16] have been used.

Regarding multiphase interferometric imaging for fast transient phenomena, the literature provides very few examples. Fringe analysis with tilted reference wavefronts seems to be the widely used method, with the drawbacks mentioned previously. It is thus of interest to investigate whether pulsed multiphase interferometry can provide phase maps, or phase shift maps, for fast transient phase objects. In this article, it is shown that this method can indeed be used in such cases, and provides accurate images with little sensitivity to optical defects. The price to be paid is a longer acquisition process. As an example, a 1 MHz ultrasound pulse produced in water by an hemispherical transducer is imaged. In section 2, the experimental arrangement is described as well as the procedure to record several images with different reference phases, at various time delays. In section 3, the corresponding data processing is detailed. The phase maps are extracted, and unwrapped if phase shifts exceed  $\pm\pi$ . Then an inverse Abel transformation is applied to recover the local index of refraction, and hence the sound pressure. The result is shown in section 5 and discussed in section 6.

## 2. Experimental setup and procedure

The experimental setup is sketched in Figure 1. It is based on a Jamin interferometer [17] with a frequency doubled pulsed Nd:YAG laser as a light source. The Jamin interferometer was chosen because of its simplicity and intrinsic stability. When separated, the two interfering beams are close to each other and undergo similar disturbances from air turbulence and encountered windows [18]. In the sample region, the two beams are 6 mm apart and are

6 mm high. The lens  $L_1$  images the entrance rectangular diaphragm A on the sample, while  $L_2$  makes an image of the sample onto the CCD camera. The laser (Big Sky Laser CFR200) delivers 120 mJ, 8 ns long pulses with a repetition rate of 20 Hz, from which only about  $1 \mu\text{J}$  pulses are derived by 4 vitrous reflections, and a  $d = 2$  gray filter. The optical wavelength used is  $\lambda_o = 532$  nm. The laser is transversally highly multimode with a flat top profile. Its effective coherence length, as measured with the interferometer by the fringe contrast versus the optical path difference, was found to be 4 mm at half contrast. Hence the optical path difference between the two beams was kept well below this value to get a good contrast. The imaging camera (Andor LUCA R) is triggered synchronously with the pulsed laser. Used with a  $2 \times 2$  binning, it provides  $280 \times 502$  pixel images of the  $6 \times 10.5$  mm<sup>2</sup> observed region. Image resolution is discussed at the end of this section and is of about  $20 \mu\text{m}$ .

For scanning the interferometer, two 4 mm thick parallel plates  $S_1$  are introduced in the reference beam, with symmetrical tilts to avoid beam displacement (see Fig. 1). They are allowed to rotate around an horizontal axis so that their tilt angle can be precisely controlled around  $5^\circ$ . This is achieved by moving a separator along the vertical axis. When changing its height  $h$  by  $\delta h = 1$  mm, the tilt angle is changed by  $0.05^\circ$ , and the optical path by  $0.14 \mu\text{m}$ . Because of their thickness, the plates  $S_1$  also introduce a difference of about 4 mm in the optical length of the two interferometer paths. In order to keep the optical path difference smaller than the laser coherence length, a second pair of similar plates  $S_2$  is introduced in the signal beam. Those are kept fixed. The phase shift between the two beams introduced by these devices is approximated as:

$$\psi = \psi_0 + 2\pi \frac{h}{a} \left( 1 + s \frac{h}{a} \right) \quad (1)$$

where  $a \simeq 3.7$  mm and  $s \simeq 0.04$  as determined by simple geometrical optics. In fact the two parameters  $a$  and  $s$  depend somewhat on the incidence angle of the beams on the plates, which cannot be measured easily. So they are left as fitting parameters as explained later.

The phase object to be imaged is an ultrasound wave pulse (central frequency 1.06 MHz, duration  $5 \mu\text{s}$ ) emitted in water along the vertical axis by a piezoelectric hemisphere (inner diameter 12 mm, outer diameter 16 mm, provided by Channel Industries Inc.). Water used was filtered by reverse osmosis (Millipore Direct-Q ultrapure water system). The thickness vibration mode of the transducer is driven by an RF amplifier (RF in Fig. 1) fed with a function generator (Tektronix AFG3022) triggered from the laser command electronics with an adjustable delay. The same generator also triggers image acquisition by the camera. The sound velocity in water is 1480 m/s [19] at  $T = 293$  K. The sound wavelength is  $\lambda_s \simeq 1.4$  mm and the sound pulse length about  $L_s = 7$  mm. The sound pulse time of flight from the transducer inner surface to its center is about  $4 \mu\text{s}$ . In the experiment trigger is given by the laser flash firing. The laser pulse takes place  $170 \mu\text{s}$  later with a negligible

jitter. The sound pulse is sent at time  $t$  varied from 157 to 169  $\mu\text{s}$  by steps of 0.01  $\mu\text{s}$  ( $N_t = 1200$  time steps). For each time step, images are taken for  $N_p = 25$  different values of  $h$ , labeled  $h(1)\dots h(p)\dots h(N_p)$ . The corresponding values of  $\psi$ , labeled  $\psi(1)\dots\psi(p)\dots\psi(N_p)$ , span an interval set to  $\psi(N_p) - \psi(1) \simeq 3\pi$ . Raw data are a set of  $N_p \times N_t$  images labelled with their time delay and phase step. Their recording takes about 30 minutes. For each phase step, a reference image is first made by averaging  $N_{av} = 20$  images without exciting the transducer. These images of an undisturbed medium are later used as reference images for subtraction of a background phase field. The order in which  $h$  and  $t$  are varied is important to minimize interferometer drift effects. The sound pulse insertion time  $t$  is varied first at a fixed phase step along a complete time series, before changing  $h$  to the next phase step.

### 3. Phase map computation

During data processing, pixels are treated independently. Hence there is no spatial resolution loss due to image processing. Let  $I(t, p)$  be the intensity recorded for a given pixel for the time index  $t$  and interferometer phase index  $p$ . It is expected that [1]:

$$I(t, p) = I_0(t) [1 + C(t) \cos(\phi(t) - \psi(p))] \quad (2)$$

where  $I_0(t)$  is the average intensity,  $C(t)$  the fringe contrast,  $\phi(t)$  the optical phase to be measured for this particular pixel and  $\psi(p)$  is the interferometer phase given by equation (1) for each value of  $h$ . To extract  $\phi(t)$ , one needs to fit the  $N_p$  values  $I(t, p)$  with equation (2) with five unknown parameters  $I_0(t)$ ,  $C(t)$ ,  $\phi(t) - \psi_0$ ,  $a$ ,  $s$ . Because of the nonlinear term  $(h/a)^2$  in equation (1), this involves a time consuming nonlinear fitting procedure. Actually the parameters  $\psi_0$ ,  $a$  and  $s$  do not depend much on time and position. Thus they are only computed for pixels of the reference images for which  $\phi(t)$  is zero. Actually the variance of  $a$  is a few percent. Hence, only a mean value over space of those three parameters is computed and used in the next steps of the process. In the later images only three parameters are to be determined for each pixel, namely  $I_0(t)$ ,  $C(t) \cos(\phi(t))$  and  $C(t) \sin(\phi(t))$ . This can be done with a fast linear method [1, 20] and takes about 1 s for the entire image of one time step.

The value  $\phi(t)$  determined in this way is within the limits  $-\pi$ ,  $\pi$  and undergoes possibly  $2\pi$  phase jumps. The first time step is chosen so that the phase shift amplitude introduced by the sound field is less than  $\pi$ . The phase unwrapping is realized in time for each pixel by removing phase jumps  $|\phi(t+1) - \phi(t)|$  larger than  $\pi$ . This is possible only if time steps verify the sampling condition, i.e.  $|\phi(t+1) - \phi(t)| < \pi - 2\delta\phi$ , where  $\delta\phi$  is the phase noise. This condition actually sets the value of the time step and consequently the number of steps in the experiment. Usually phase unwrapping is made spatially for each time on the 2D-maps, and then made continuous in time. Although many algorithms have been published on this topic [21], it is not a trivial problem. Unwrapping the phase in time for each pixel separately

is much easier and faster. The continuity in space for the phase shift map  $\phi(t, x, z) - \phi(0, x, z)$  is obtained automatically, because it starts from 0 everywhere and has no later phase jumps.

#### 4. From phase map to radial sound field

The phase  $\phi$  is assumed to be related to the refractive index by a simple integration along the  $y$ -axis parallel to the beam direction in the sample (see Figure 2). More precisely, for each pixel  $(x, z)$ , one takes into account the difference  $\delta n(x, z, y)$  between the perturbed index  $n(x, z, y)$  seen by the signal beam at point  $(x, y, z)$  and the refractive index  $n_0$  of the unperturbed fluid seen by the reference beam on its parallel path. In our case the sound field is rotationnally invariant around the hemisphere axis  $z$  so that  $\delta n$  is a function of  $z$  and  $r = \sqrt{x^2 + y^2}$  only. Then the phase map results from an integration of the refractive index variations over the path of the beam from the entrance window ( $y = -l/2$ ), to the exit window ( $y = l/2$ ):

$$\phi(x, z) = \frac{2\pi}{\lambda} \int_{-l/2}^{l/2} dy \delta n(\sqrt{x^2 + y^2}, z). \quad (3)$$

Note however that  $\delta n$  is identically 0 after some finite distance from the center (dashed circle on Figure 2) because there is still no sound there. Hence equation (3) can be rewritten as:

$$\phi(x, z) = \frac{2\pi}{\lambda} \int_{-\infty}^{\infty} dy \delta n(\sqrt{x^2 + y^2}, z). \quad (4)$$

which is the Abel transform of the  $\delta n(r, z)$  map. Conversely radial refractive index profiles can be retrieved from phase maps via an inverse Abel tranform. To make that part easier, the camera lines and the signal light beam direction  $Oy$  have been carefully aligned parallel to the hemisphere basis. The abscissa  $x_0$  of the hemisphere axis is determined as the symmetry axis of the projected sound field. Then the Abel inversion of the phase is perfomed for each line  $z$  on  $\phi(z, x - x_0)$  using the algorithm proposed by [22]. The data are fitted with splines over successive sets of 20 pixels.

Abel inversion procedure is justified provided that light rays do not suffer any significant deviation during their propagation through the studied sample. More precisely the Raman-Nath condition should be fulfilled, i.e. deviation of a light beam from a straight line over the sample diameter  $D$  due to the refractive index gradient should be less than the optical resolution  $\delta x$ . Let  $\lambda_s$  be the sound wavelength,  $\lambda_o$  the laser light wavelength,  $\phi_m$  the maximum phase accumulated across the sample. Then the condition amounts to:

$$\phi_m < \frac{\delta x \lambda_s}{D \lambda_o}. \quad (5)$$

With the values  $\lambda_o = 0.5 \mu\text{m}$ ,  $\lambda_s = 1.4 \text{ mm}$ ,  $\delta x \simeq \lambda_s/10$ , condition (5) puts a rather large limit on  $\phi_m$ , about 50. A second condition is that all rays collected by the imaging optics

and originating from a given point of the object undergo the same  $\phi$  retardation. Maximum transverse extension of such a ray bundle at the exit of the sample, i.e. at  $D/2$ , should be less than the characteristic length over which  $\phi$  varies, typically  $\lambda_s$ . If  $\theta$  is the aperture angle of the optics, this is true if  $\theta D/2 < \lambda_s$ . In our case,  $D \simeq 16$  mm. This leads to the condition  $\theta < 0.2$ . The numerical aperture of the imaging lens is about  $\theta = 0.03$  and fulfills the condition. In other respects, this numerical aperture should be large enough to ensure the desired optical resolution  $\delta x$ . The current aperture provides a resolution  $\delta x = 1.2\lambda_o/\theta \simeq 20 \mu\text{m}$ .

The acoustic pressure field is proportional to  $\delta n$  and is computed from the relation:

$$\delta P(x, z) = (n(x, z, y) - n_0)/(\partial n/\partial P) \quad (6)$$

where the water piezo-optic constant is  $(\partial n/\partial P) \simeq 1.4 \times 10^{-4} \text{MPa}^{-1}$  [23, 24].

## 5. An example of ultrasound pulse image

In Figures 3 and 4, three stages are shown from interference images to pressure map when the sound pressure is at its maximum at the focus. On image 3.a, severe optical defects are clearly visible : dust particles, diffraction by the hemisphere rim. These defects are nearly completely washed out in the phase map 3.b. On the contrary, they could be seen obviously on the contrast map. This appears to be the main advantage of the multiphase method, the fitted phase being only weakly sensitive to intensity fluctuations. The signal to noise is good enough to yield an acceptable inverse Abel transform, from which the pressure is deduced using equation 6. Its radial profile is shown in Figure 4.a, as well as its time variation at the focus when the sound pulse is going through (Figure 4.b). While the transducer is excited at its resonance frequency by a constant amplitude sinusoidal burst of 5 periods, its response increases in time as expected from a driven damped harmonic oscillator. The oscillation is actively damped during the last oscillation. This explains the time profile of the sound pulse (Figure 4.b).

This imaging method thus provides a way to investigate in detail the focusing properties of this type of transducer.

## 6. Discussion

Discussions of errors in multiphase interferometry may be found in [1, 2, 20, 25]. Although written for static interferometric imaging, they apply equally well to the pulsed case. They show that the multiphase technique brings two benefits. The first one is to avoid systematic errors coming from imperfectly scanned phase  $\psi_p$  when predetermined schemes such as  $(-\pi/2, 0, \pi/2)$ ,  $(-\pi/2, 0, \pi/2, \pi)$  or  $(-\pi, -\pi/2, 0, \pi/2, \pi)$  are used [26]. Here the phase is not scanned with an *a priori* scheme. Its value is extracted from the series of unperturbed images at  $t = 0$ . In equation (1) the slope  $2\pi/a$  of the actual phase as a function of the



scanning parameter  $h$  is left free, and a non linearity  $s$  is permitted by the fitting process. Hence the only remaining errors may come from drifts in time of the interferometer. Since in the experiment, changing the delay is ten time faster than changing the phase, images are taken for a complete time series at a fixed reference phase. This takes about 60 s. Then the reference phase is changed to the next value. In this way a possible drift in time of the interferometer geometry is in some way taken into account by the fitting process of  $a$  and  $s$  in formula (1). This scanning procedure, i.e. ‘time first, phase second’, is thus to be preferred.

The second benefit from multiphase technique results simply from the larger number of data (here 25 images compare to a minimum of 3 to extract the phase, and compared to 1 for fringe analysis). This statistical improvement is thus  $\sqrt{25/3}$  and  $\sqrt{25}$  respectively. More quantitatively, let  $\delta I$  be the pixel noise for one image (including laser fluctuations and detection noise):

$$\delta\phi = \frac{\delta I/I_0}{\sqrt{CN_p}}. \quad (7)$$

Here  $\delta I/I_0 \simeq 0.1$ ,  $C \simeq 1$ ,  $N_p = 25$ . This gives  $\delta\phi \simeq 0.02$ , or  $\lambda/300$  in a more commonly used unit.

Of course, the imaging technique has two well-known advantages compared to in situ point by point pressure measurement with a pressure probe. It provides parallel measurements at a large number of locations and times. This quality is reflected obviously by the large size of the generated data (GBytes). It also provides this information in a non invasive and non perturbative way.

Nevertheless one may question the accuracy of the pressure field determined in this way. A quantitative analysis of the errors is not easy, in particular due to the lateral averaging brought by the diffraction on formula (3). Also the phase field is not always determined up to a region where  $\phi = 0$ , inducing some error in the inverse Abel transform. Thus, to check the accuracy, a direct comparison was made with a fiber-optic probe hydrophone for the pressure at the focus. A fiber-optic probe hydrophone [23, 27] determines the liquid refractive index modulation, by measuring the reflection coefficient  $R$  at the tip of an optical fiber. Reflection coefficient  $R$  is given by the Fresnel formula:

$$R = \left[ \frac{n_f - (n_w + \delta n_w)}{n_f + (n_w + \delta n_w)} \right]^2 \quad (8)$$

where  $n_f$ ,  $n_w$  are the optical fiber and water refractive indices. Water refractive index modulations  $\delta n_w$  due to sound waves are retrieved from those of  $R$ , after averaging over typically 100 bursts. Corrections due to the non zero compressibility of the fiber core are taken into account by:

$$\delta n_f = \delta n_w \frac{\partial n_f / \partial P}{\partial n_w / \partial P}. \quad (9)$$



The derivatives of refractive indices with respect to pressure are  $\partial n_w/\partial P \simeq 1.4 \times 10^{-4} \text{ MPa}^{-1}$  [28] and  $\partial n_f/\partial P \simeq 1.5 \times 10^{-5} \text{ MPa}^{-1}$  [29]. The correction amounts to about 7 %.

The physical quantity probed by the fiber-optic probe hydrophone and the interferometer being the same, a direct comparison can be made [30]. The fiber tip was set 0.12 mm above the piezo hemisphere center. This position was determined accurately by the images acquired during the measurement. Refractive index variations at the same point were also computed from interferometric measurements, taken with the hydrophone removed. Results are presented in figure 5. Both measurements are compatible within 5 %. This is to be compared to the reproductibility of the hydrophone measurements (typically 10 %), and the uncertainties in the inverse Abel transform due to the incomplete phase maps (which can amount to 5 %). Hence the agreement is satisfactory.

## 7. Conclusion

It appears that multiphase interferometric imaging can be easily applied to repetitive fast transient phenomena for which optical phase is a good observable. It provides quickly extensive data compared to point by point measurements. We have shown in the case of a sound wave that these data are quantitatively reliable. The multiphase feature brings a better immunity to optical defects in the images and an improved signal to noise ratio. Phase unwrapping in time appears as a very simple and robust algorithm. The longer acquisition time was found acceptable. Hence this method could be more widely used than it has been up to now to study fast transient phenomena.

## Acknowledgements

This research has been funded by the ERC under the European Community's FP7 *Grant Agreement* n°240113 and by the *Agence Nationale de la Recherche*, contract 05-BLAN-0084-02 META.

## References

1. K. Creath, "Phase-measurement interferometry techniques," in *Progress in Optics*, E. Wolf, ed. (Elsevier, 1988), vol. **26**, pp. 349-393.
2. J. Schwider, "Advanced evaluation techniques in interferometry," in *Progress in Optics*, E. Wolf, ed. (Elsevier, 1990), vol. **28**, pp. 271-359.
3. V. I. Vlad and D. Malacara, "Direct spatial reconstruction of optical phase from phase-modulated images," in *Progress in Optics*, E. Wolf, ed. (Elsevier, 1994), vol. **33**, pp. 261-317.
4. G. W. Willard, "Focusing ultrasonic radiators," *J. Acous. Soc. Am.* **21**, 360-375 (1949).

5. C. F. Ying, "Photoelastic visualization and theoretical analysis of scatterings of ultrasound pulses in solids," in *Physical Acoustics*, R. N. Thurston, ed. (Academic Press, 1990), vol. **19**, pp. 291-343.
6. M. Takeda, H. Ina, and S. Kobayashi, "Fourier-transform method of fringe-pattern analysis for computer-based topography and interferometry," *J. Opt. Soc. Am.* **72**, 156-160 (1982).
7. T. Ezure, K. Mizutani, and H. Masuyama, "Optical measurement of sound fields estimated from multiple interference images using Mach-Zehnder interferometer," *Elect. and Communication in Japan part II* **87**, 20-27 (2004).
8. O. J. Løkberg, "Sound in flight: Measurement of sound fields by use of TV holography," *Appl. Opt.* **33**, 2574-2584 (1994).
9. R. C. Gutierrez, K. V. Schcheglov, and T. Tang, "Interferometric system for precision imaging of vibrating structures," US patent 6, 219, 145, B1 (2001), <http://www.freepatentsonline.com/6219145.pdf>.
10. J. A. Conway, J. V. Osborn, and J. D. Fowler, "Stroboscopic imaging interferometer for MEMS performance measurement," in *Aerospace report*, TR-2007, 8555, <http://www.dtic.mil/cgi-bin/GetTRDoc?Location=U2&doc=GetTRDoc.pdf&AD=ADA470710>.
11. J. S. Harris, R. L. Fusek, and J. S. Marcheski, "Stroboscopic interferometer," *Appl. Opt.* **18**, 2368-2371 (1979).
12. O. Y. Kwon, D. M. Shough, and R. A. Williams, "Stroboscopic phase-shifting interferometry," *Opt. Lett.* **12**, 855-857 (1987).
13. E. Abraham, K. Minoshima, and H. Matsumoto, "Femtosecond laser-induced breakdown in water: Time-resolved shadow imaging and two-color interferometric imaging," *Opt. Commun.* **176**, 441-452 (2000).
14. K. T. Gahagan, D. S. Moore, D. J. Funk, J. H. Reho, and R. L. Rabie, "Ultrafast interferometric microscopy for laser-driven shock-wave characterization," *J. Appl. Phys.* **92**, 3679-2682 (2002).
15. V. V. Temnov, K. Sokolowski-Tinten, P. Zhou, and D. von der Linde, "Femtosecond time-resolved interferometric microscopy," *Appl. Phys. A* **78**, 483-489 (2004).
16. D. J. Funk, D. S. Moore, S. D. McGrane, J. H. Reho, and R. L. Rabie, "Ultrafast spatial interferometry: A tool for characterizing material phase and hydrodynamic motion in laser-excited metals," *Appl. Phys. A* **81**, 295-302 (2005).
17. M. Born and E. Wolf, *Principles of optics seventh edition* (Cambridge University Press, 1999), pp. 309-310.
18. The apparatus is in fact designed for working with low temperature samples protected by four windows on each side.

19. R. A. Fine and F. J. Millero, "Compressibility of water as a function of temperature and pressure," *J. Chem. Phys.* **59**, 5529-5536 (1973).
20. C. J. Morgan, "Least-squares estimation in phase-measurement interferometry," *Opt. Lett.* **7**, 368-370 (1982).
21. J. J. Chyou, S. J. Chen, and Y. K. Chen, "Two-dimensional phase unwrapping with a multichannel Least-Mean-Square algorithm," *Appl. Opt.* **43**, 5655-5661 (2004).
22. M. Deutsch and I. Beniaminy, "Inversion of Abel's integral equation for experimental data," *J. Appl. Phys.* **54**, 137-143 (1983).
23. J. Staudenraus and W. Eisenmenger, "Fiber-optic probe hydrophone for ultrasonic and shock-wave measurements in water," *Ultrasonics* **31**, 268-273 (1993).
24. J. E. Parsons, C. A. Cain, and J. B. Fowlkes, "Cost-effective assembly of a basic fiber-optic hydrophone for measurements of high-amplitude therapeutic ultrasound fields," *J. Acoust. Soc. Am.* **119**, 1432-1440 (2006).
25. J. Schwider, R. Burow, K. E. Elssner, J. Grzanna, R. Spolaczyk, and K. Merkel, "Digital wave-front measuring interferometry: Some systematic error sources," *Appl. Opt.* **22**, 3421-3432 (1983).
26. P. Hariharan, B. F. Oreb, and T. Eiju, "Digital phase-shifting interferometry: A simple error-compensating phase calculation algorithm," *Appl. Opt.* **26**, 2504-2506 (1987).
27. K. Davitt, A. Arvengas, and F. Caupin, "Water at the cavitation limit: Density of the metastable liquid and size of the critical bubble," *EPL* **90**, 16002 (2010).
28. "Release on the Refractive Index of Ordinary Water Substance as a Function of Wavelength, Temperature and Pressure," <http://www.iapws.org/relguide/rindex.pdf>.
29. K. Davitt, E. Rolley, F. Caupin, A. Arvengas, S. Balibar, "Equation of state of water under negative pressure," *J. Chem. Phys.*, accepted for publication.
30. The fact that the lasers used in both methods have different wavelengths (532 nm and 808 nm) introduces a negligible correction.

## Captions

Figure 1: Experimental setup.  $b$ : attenuated laser beam,  $tr1$ : trigger pulse sent by the laser 170  $\mu s$  before the laser pulse, AFG: function generator,  $tr2$ : trigger pulse for the CCD camera, PT: piezo transducer driven by the amplifier RF,  $S_1$ : scanning plates for the interferometer,  $S_2$ : compensating plates. The inset shows how the optical path for the beam  $b_1$  is changed by moving the separator of  $S_1$  plates by  $h$ .

Figure 2: Measured phase  $\phi(x, z)$  results from the integration of the optical phase shift over the beam path in the cell. Dashed circle with diameter  $D$ : limit of the sound field.

Figure 3 : *a*) Image of the interference field above the piezo hemisphere. Dash-dotted white line shows its axis and the dashed line outlines the profile of its meridian section. *b*) Phase field determined from 25 similar images with stepped optical phase. Non transparent regions of the field of view appear as random numbers.

Figure 4 : *a*) Pressure map computed from the phase map Fig. 3.*b* by Abel inversion from pixel 1 to 414. Area from  $x = 414$  to  $x = 500$  are filled by symmetry. *b*) Time variations of the computed pressure at the focus while the sound pulse goes through (solid line). The transducer excitation voltage is also plotted (dashed line), starting at  $t = 0$ .

Figure 5 : Comparison of refractive index modulations obtained from the fiber-optic probe hydrophone (gray continuous line) and from inverse Abel transform of the phase map (dark dashed line).

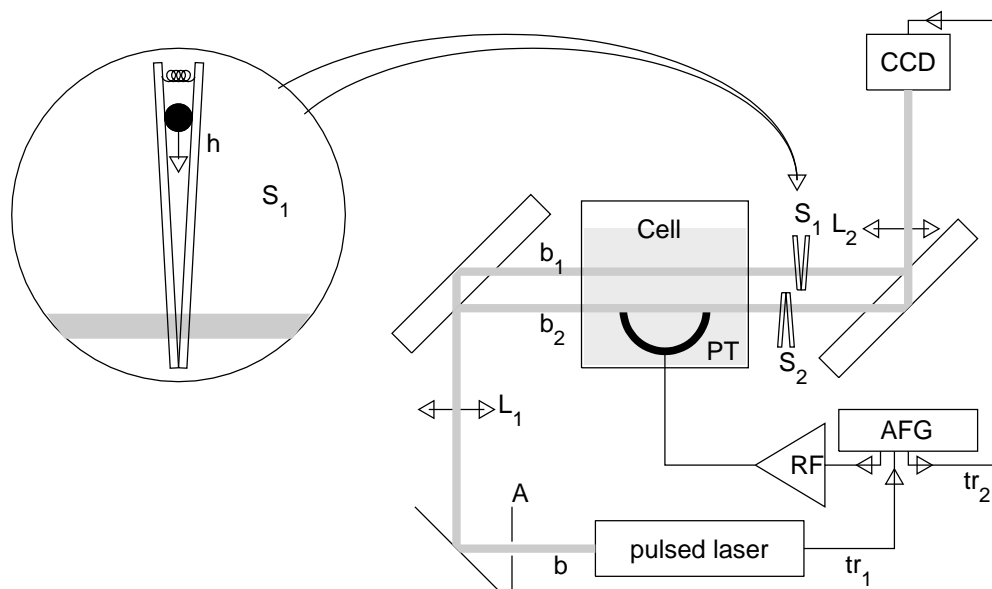


Fig. 1.

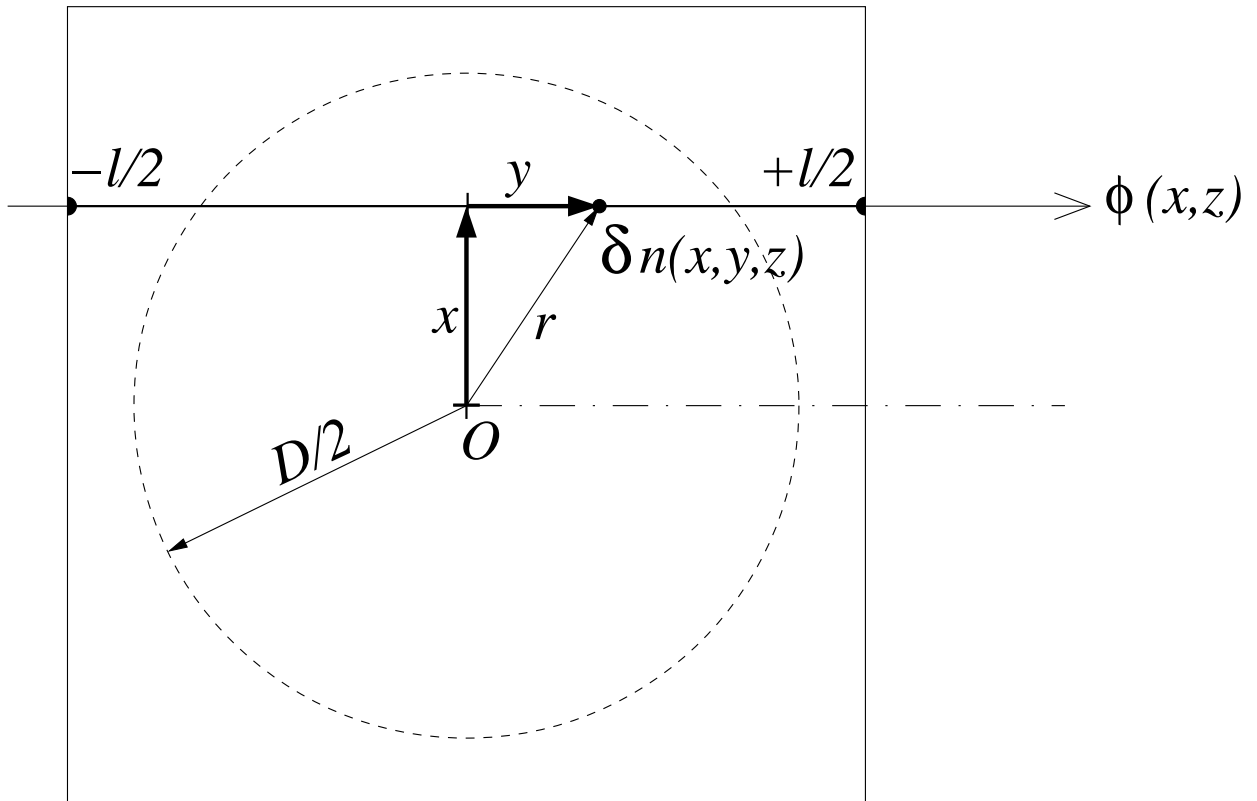


Fig. 2.

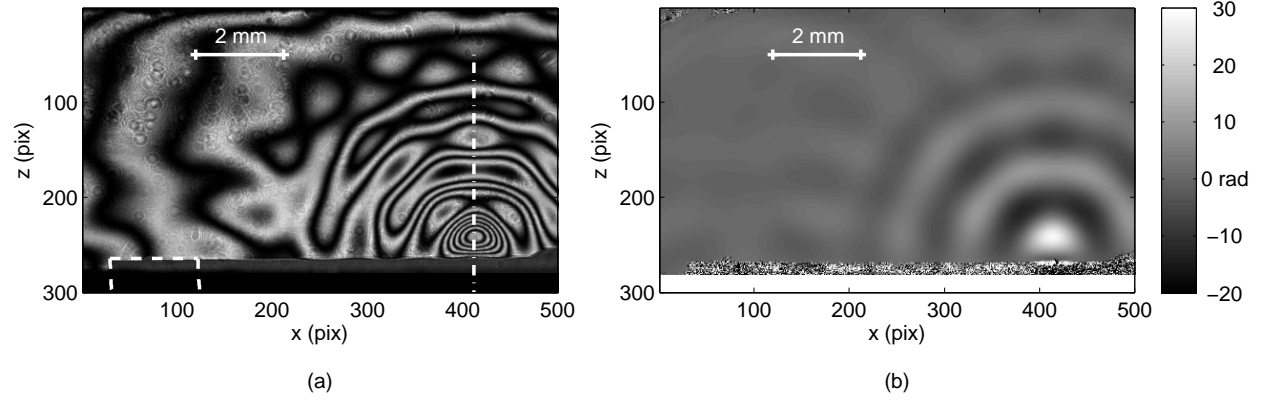


Fig. 3.



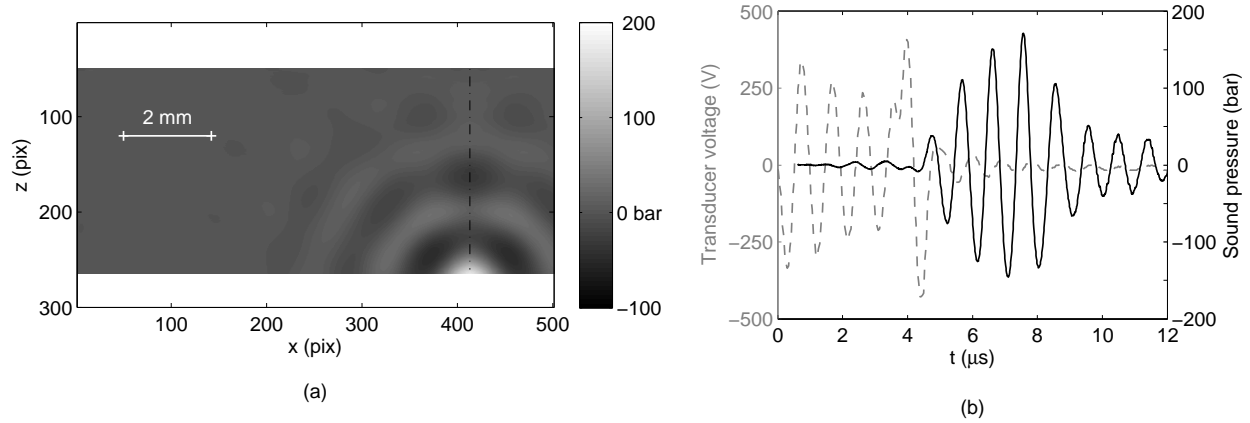


Fig. 4.

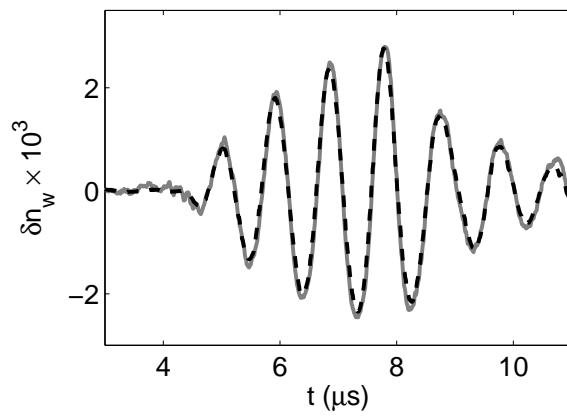


Fig. 5.