



HAL
open science

Dirac mass dynamics in a multidimensional nonlocal parabolic equation

Alexander Lorz, Sepideh Mirrahimi, Benoît Perthame

► **To cite this version:**

Alexander Lorz, Sepideh Mirrahimi, Benoît Perthame. Dirac mass dynamics in a multidimensional nonlocal parabolic equation. *Communications in Partial Differential Equations*, 2011, 36, pp.1071-1098. 10.1080/03605302.2010.538784 . hal-00533693v1

HAL Id: hal-00533693

<https://hal.science/hal-00533693v1>

Submitted on 8 Nov 2010 (v1), last revised 23 Mar 2020 (v2)

HAL is a multi-disciplinary open access archive for the deposit and dissemination of scientific research documents, whether they are published or not. The documents may come from teaching and research institutions in France or abroad, or from public or private research centers.

L'archive ouverte pluridisciplinaire **HAL**, est destinée au dépôt et à la diffusion de documents scientifiques de niveau recherche, publiés ou non, émanant des établissements d'enseignement et de recherche français ou étrangers, des laboratoires publics ou privés.

Dirac mass dynamics in a multidimensional nonlocal parabolic equation

Alexander Lorz* Sepideh Mirrahimi † Benoît Perthame ‡

November 8, 2010

Abstract

Nonlocal Lotka-Volterra models have the property that solutions concentrate as Dirac masses in the limit of small diffusion. Is it possible to describe the dynamics of the limiting concentration points and of the weights of the Dirac masses? What is the long time asymptotics of these Dirac masses? Can several Dirac masses co-exist?

We will explain how these questions relate to the so-called "constrained Hamilton-Jacobi equation" and how a form of canonical equation can be established. This equation has been established assuming smoothness. Here we build a framework where smooth solutions exist and thus the full theory can be developed rigorously. We also show that our form of canonical equation comes with a structure of gradient flow.

Numerical simulations show that the trajectories can exhibit unexpected dynamics well explained by this equation.

Our motivation comes from population adaptive evolution a branch of mathematical ecology which models darwinian evolution.

1 Motivation

The nonlocal Lotka-Volterra parabolic equations arise in several areas such as ecology, adaptative dynamics and as limits of stochastic individual based models in the limit of infinite population. The simplest example assumes global interactions between individuals with a trait x and reads

$$\partial_t n_\epsilon - \epsilon \Delta n_\epsilon = \frac{n_\epsilon}{\epsilon} R(x, I_\epsilon(t)), \quad t > 0, x \in \mathbb{R}^d, \quad (1.1)$$

with a nonlinearity driven by the integral term

$$I_\epsilon(t) = \int_{\mathbb{R}^d} \psi(x) n_\epsilon(t, x) dx. \quad (1.2)$$

Another and more interesting example is with local interactions

$$\partial_t n_\epsilon(t, x) = \frac{1}{\epsilon} n_\epsilon(t, x) \left(r(x) - \int_{\mathbb{R}^d} C(x, y) n_\epsilon(t, y) dy \right) + \epsilon \Delta n_\epsilon(t, x). \quad (1.3)$$

*Department of Applied Mathematics and Theoretical Physics (DAMTP), Centre for Mathematical Sciences, Wilberforce Road, Cambridge CB3 0WA, UK. Email: A.Lorz@damtp.cam.ac.uk

†UPMC, CNRS UMR 7598, Laboratoire Jacques-Louis Lions, F-75005, Paris. Email: mirrahimi@ann.jussieu.fr

‡and Institut Universitaire de France. Email: benoit.perthame@upmc.fr

We denote by $n_\epsilon^0 \geq 0$ the initial data.

These are called 'mutation-competition' models because the Laplace term is used for modeling mutations in the population. Competition is taken into account in the second model by the competition kernel $C(x, y) \geq 0$ and in the first model by saying that R can be negative for I_ϵ large enough (it a measure of how the total population influences birth and death rates). Such models can be derived from stochastic individual based models in the limit of large populations, [9, 6, 7]. There is a large literature on the subject, in terms of modeling and analysis, we just refer the interested reader to [12, 13, 23, 26].

We have already normalized the model with a small positive parameter ϵ since it is our goal to study the behaviour of the solution as $\epsilon \rightarrow 0$. The interesting qualitative outcome is that solutions concentrate as Dirac masses

$$n_\epsilon(t, x) \approx \bar{\rho}(t)\delta(x - \bar{x}(t)).$$

For equation (1.1), we can give an intuitive explanation; in this limit, we expect that the relation $n(t, x)R(x, I(t)) = 0$ holds. In dimension 1 and for $x \mapsto R(x, I)$ monotonic, there is a single point $x = X(I)$ where R will not vanish and, consequently, where n will not vanish. A priori control of the total mass on n from below implies the result with $\bar{x}(t) = X(I(t))$.

In several studies, we have established these singular limits with weak assumptions [3, 24]. A main new concept arises in this limit, the *constrained Hamilton-Jacobi* equation introduced in [13] which occurs by some kind of real phase WKB ansatz (as for fronts propagations in [16, 15, 2])

$$n_\epsilon(t, x) = e^{u_\epsilon(t, x)/\epsilon}. \quad (1.4)$$

Here we have in mind the simple example of Dirac masses approximated by gaussians

$$\delta(x - \bar{x}) \approx \frac{1}{\sqrt{2\pi\epsilon}} e^{-|x - \bar{x}|^2/2\epsilon} = e^{(-|x - \bar{x}|^2 - \epsilon \ln(2\pi\epsilon))/2\epsilon}$$

It is much easier to describe the limit of $-|x - \bar{x}|^2 - \epsilon \ln(2\pi\epsilon)$ Dirac concentration points are understood as maximum points of $u_\epsilon(t, x)$ in (1.4). As it is well understood, these Hamilton-Jacobi equations develop singularities in finite time [1, 14, 19] which is a major technical difficulty both for proving the limit and for analyzing properties of the concentration points $\bar{x}(t)$.

This method in [13] of using $\epsilon \ln(n_\epsilon)$ to prove concentration has been followed in several subsequent studies. For long time asymptotics (and not $\epsilon \rightarrow 0$ but the two issues are connected as we explain in section 2) it was introduced in [10] and used in [27, 26]. More recently in [8] the authors come back on the Hamilton-Jacobi equation and prove that it makes sense still with weak assumptions for several nonlocal quantities $I_k = \int \psi_k n_\epsilon(t, x) dx$ which can be characterized in the limit.

Here we take the counterpart and develop a framework where we can prove smoothness of the various quantities arising in the theory. This opens up the possibility to address many questions that seem impossible to attain directly

- Do the Dirac concentrations points appear spontaneously at their optimal location or do they move regularly?
- In the later case, is there a differential equation on the concentration point $\bar{x}(t)$? It follows

from regularity that we can establish a form of the so-called *canonical equation* in the language of adaptive dynamics [12, 11]. This equation has been established *assuming* smoothness in [13], in our framework it holds true.

- In higher dimensions, why is a single Dirac mass naturally sustained (and not the hypersurface $R(\cdot, I) = 0$ for instance)? The canonical equation enforces constraints on the dynamics which give the explanation.
- What is the long time behaviour of the concentration points $\bar{x}(t)$? A simple route is that the canonical equation comes with the structure of a gradient flow.

We develop the theory separately for the simpler case of global interactions model (1.1) and or the global interaction model (1.3). For global interactions we rely on assumptions stated in section 3 and we give all the details of the proofs in the three subsequent sections. We illustrate the results with numerical simulations that are presented in section 7. We give several extensions afterwards; in section 8 we treat the case with non-constant diffusion, and finally the case of local interactions in section 9.

2 A simple example: no mutations

The Laplace term in the asymptotic analysis of (1.1) and (1.3) is at the origin of several assumptions and technicalities. In order to explain our analysis in a simpler framework, we begin with the case of the two equations without mutations set for $t > 0$, $x \in \mathbb{R}^d$,

$$\partial_t n = nR(x, I(t)), \quad I(t) = \int_{\mathbb{R}^d} \psi(x)n(t, x)dx. \quad (2.1)$$

$$\partial_t n(t, x) = n(t, x) \left(r(x) - \int_{\mathbb{R}^d} C(x, y)n(t, y) dy \right) := n(t, x)R(x, I(t, x)). \quad (2.2)$$

Also, we give a formal analysis, that shows the main ideas and avoids writing a list of assumptions; those of the section 3 and 9 are enough for our purpose.

In both cases one can easily see the situation of interest for us. The models admit a continuous family of singular, Dirac masses, steady states parametrized by $y \in \mathbb{R}^d$ and the question is to study their stability and, when unstable, how the dynamics can generate a moving Dirac mass.

The Dirac steady states are given by

$$\bar{n}(x; y) = \underline{\rho}(y)\delta(x - y).$$

The total population size $\underline{\rho}(y)$ is defined in both models by the constraint

$$R(y, \underline{I}(y)) = 0,$$

with respectively for (2.1) and (2.2)

$$\underline{I}(y) = \psi(y)\underline{\rho}(y), \quad \text{resp.} \quad \underline{I}(y) = \underline{\rho}(y)C(y, y).$$

A monotonicity assumption in I for model (2.1), namely $R_I(x, I) < 0$ shows uniqueness of $\underline{I}(y)$ for a given y . In case of (2.2) it is necessary that $r(y) > 0$ for the positivity of $\underline{\rho}(y)$.

In both models a 'strong' perturbation in measures is stable, i.e. only on the weight; for $n^0 = \rho^0 \delta(x - y)$, the solution is obviously $n(t, x) = \rho(t) \delta(x - y)$ with

$$\frac{d}{dt} \rho(t) = \rho(t) R(y, \psi(y) \rho(t)), \quad \text{resp.} \quad \frac{d}{dt} \rho(t) = \rho(t) [r(y) - \rho(t) C(y, y)],$$

and

$$\rho(t) \xrightarrow[t \rightarrow \infty]{} \underline{\rho}(y).$$

This simple remark explains why, giving I now, the hypersurface $\{x, R(x, I) = 0\}$ is a natural candidate for the location of a possible Dirac curve (see the introduction).

Apart from this stable one dimensional manifold, the Dirac steady states are usually unstable by perturbation in the weak topology. A way to quantify this instability is to follow the lines of [13] and consider at $t = 0$ an exponentially concentrated initial data

$$n^0(x) = e^{u_\epsilon^0(x)/\epsilon} \xrightarrow[\epsilon \rightarrow 0]{} \underline{\rho}(\bar{x}^0) \delta(x - \bar{x}^0).$$

It is convenient to restrict our attention to u_ϵ^0 uniformly concave, having in mind the gaussian case mentioned in the introduction. Then, ϵ measures the deviation from the initial Dirac state and to see motion it is necessary to consider long times as t/ϵ or, equivalently, rescale the equation as

$$\epsilon \partial_t n_\epsilon = n_\epsilon R(x, I_\epsilon(t, x)),$$

and our goal is to prove that

$$n_\epsilon(t, x) \xrightarrow[\epsilon \rightarrow 0]{} \bar{n}(t, x) = \bar{\rho}(t) \delta(x - \bar{x}(t)).$$

Also the deviation to a Dirac state turns out to stay at the same size for all times and we can better analyze this phenomena using the WKB ansatz (1.4). Indeed, u_ϵ satisfies the equation

$$\partial_t u_\epsilon = R(x, I_\epsilon(t, x)).$$

As used by [10], because u^0 is concave, assuming $x \mapsto R(x, I_\epsilon(t, x))$ is also concave (this only relies on assumptions on the data), we conclude that $u_\epsilon(t, \cdot)$ is also concave and thus has a *unique* maximum point $\bar{x}_\epsilon(t)$. The Laplace formula shows that, with $\bar{x}(t)$ the strong limit of $\bar{x}_\epsilon(t)$,

$$\frac{n_\epsilon(t, x)}{\int_{\mathbb{R}^d} n_\epsilon(t, x) dx} \xrightarrow[\epsilon \rightarrow 0]{} \delta(x - \bar{x}(t)).$$

With some functional analysis, we are able to pass to the strong limit in I_ϵ and u_ϵ . Despite its nonlinearity, we find the same limiting equation,

$$\partial_t u = R(x, I(t, x)), \quad u(t = 0) = u^0. \tag{2.3}$$

Still following the idea introduced in [13], we may see $I(t, x)$ or $\rho(t)$ as a Lagrange multiplier for the constraint

$$\max_{\mathbb{R}^d} u(t, x) = 0 = u(t, \bar{x}(t)), \tag{2.4}$$

which follows from the a priori bound $0 < \rho(t) \leq \rho_M < \infty$. The mathematical justification of these developments is rather easy here. For model (2.1) it uses a *BV* estimate proved in [4]. For model (2.2) one has to justify persistence (that is ρ_ϵ stays uniformly positive) and strong convergence of $\rho_\epsilon(t)$. All this work is detailed below with the additional Laplace terms.

The constraint (2.4) allows us to recover the 'fast' dynamics of $I(t)$ and $\rho(t)$. Indeed, combined with (2.3), it yields

$$R(\bar{x}(t), I(t)) = 0, \quad \text{resp.} \quad R(\bar{x}(t), I(t, \bar{x}(t))) = 0. \quad (2.5)$$

Assuming regularity on the data, $u(t, x)$ is three times differentiable and the constraint (2.4) also gives

$$\nabla u(t, \bar{x}(t)) = 0.$$

Differentiating in t , we establish the analogue of the canonical equations in [11] (see also [5, 13, 27, 21])

$$\dot{\bar{x}}(t) = (-D^2 u(t, \bar{x}(t)))^{-1} \cdot D_x R(\bar{x}(t), \bar{I}(t, \bar{x}(t))), \quad \bar{x}(0) = \bar{x}^0, \quad (2.6)$$

(in the case of model (2.2), this means the derivative with respect to x in both places). Inverting I from the identities (2.5) gives an autonomous equation.

This differential equation has the structure of a gradient flow and this makes easy to analyze its long time behaviour, that is equivalent to know what are the stable Dirac states for the weak topology; the so-called Evolutionary attractor or Convergence Stable Strategy in the language of adaptive dynamics [12, 27]. Eventhough this is less visible, it also carries regularity on the Lagrange multiplier $\rho(t)$ which helps for the functional analytic work in the case with mutations. Another use of (2.6) is to explain why, generically, only one pointwise Dirac mass can be sustained; as we explained earlier, the equation on $\dot{\bar{x}}(t)$ also gives the global unknown $I(t)$ by coupling with (2.5) and this constraint is very strong. See section 7 for an example.

To conclude this quick presentation, we notice that the time scale (in ϵ here) has to be precisely adapted to the specific initial state under consideration. The initial state itself also has to be 'exponentially' concentrated along with our construction; this is the only way to observe the regular motion of the Dirac concentration point. This is certainly implicitly used in several works where such a behaviour is displayed, at least numerically. Of course, there are many other ways to concentrate the initial state with a 'tail' covering the full space so as to allow that any trait x can emerge; these are not covered by the present analysis.

3 Global competition: assumptions and main results

As used by [10], concavity assumptions on the function u_ϵ in (1.4) are enough to ensure concentration of $n_\epsilon(t, \cdot)$ as a *single* Dirac mass. We follow this line and make the necessary assumptions.

We start with assumptions on ψ :

$$0 < \psi_m \leq \psi \leq \psi_M < \infty, \quad \psi \in W^{2,\infty}(\mathbb{R}^d). \quad (3.1)$$

The assumptions on $R \in C^2$ are that there is a constant $I_M > 0$ such that (fixing the origin in x appropriately)

$$\max_{x \in \mathbb{R}^d} R(x, I_M) = 0 = R(0, I_M), \quad (3.2)$$

$$-\underline{K}_1|x|^2 \leq R(x, I) \leq \overline{K}_0 - \overline{K}_1|x|^2, \quad \text{for } 0 \leq I \leq I_M, \quad (3.3)$$

$$-2\underline{K}_1 \leq D^2R(x, I) \leq -2\overline{K}_1 < 0 \text{ as symmetric matrices for } 0 \leq I \leq I_M, \quad (3.4)$$

$$-\underline{K}_2 \leq \frac{\partial R}{\partial I} \leq -\overline{K}_2, \quad \Delta(\psi R) \geq -K_3. \quad (3.5)$$

At some point we will also need that (uniformly in $0 \leq I \leq I_M$)

$$D^3R(\cdot, I) \in L^\infty(\mathbb{R}^d). \quad (3.6)$$

Next the initial data n_ϵ^0 has to be chosen compatible with the assumptions on R and ψ . We require that there is a constant I^0 such that

$$0 < I^0 \leq I_\epsilon(0) := \int_{\mathbb{R}^d} \psi(x)n_\epsilon^0(x)dx < I_M, \quad (3.7)$$

that we can write

$$n_\epsilon^0 = e^{u_\epsilon^0/\epsilon}, \quad \text{with } u_\epsilon^0 \in C^2(\mathbb{R}^d) \text{ (uniformly in } \epsilon),$$

and we assume uniform concavity on u^ϵ too. Namely, there are positive constants $\underline{L}_0, \overline{L}_0, \underline{L}_1, \overline{L}_1$ such that

$$-\underline{L}_0 - \underline{L}_1|x|^2 \leq u_\epsilon^0(x) \leq \overline{L}_0 - \overline{L}_1|x|^2, \quad (3.8)$$

$$-2\underline{L}_1 \leq D^2u_\epsilon^0 \leq -2\overline{L}_1. \quad (3.9)$$

For Theorems 3.2 and 3.3 we also need that

$$D^3u_\epsilon^0 \in L^\infty(\mathbb{R}^d) \text{ componentwise uniformly in } \epsilon, \quad (3.10)$$

$$n_\epsilon^0(x) \xrightarrow{\epsilon \rightarrow 0} \bar{\rho}^0 \delta(x - \bar{x}^0) \text{ weakly in the sense of measures.} \quad (3.11)$$

Next we need to restrict the class of initial data to fit with R through some compatibility conditions

$$4\overline{L}_1^2 \leq \overline{K}_1 \leq \underline{K}_1 \leq 4\underline{L}_1^2. \quad (3.12)$$

In the concavity framework of these assumptions, we are going to prove the following

Theorem 3.1 (Convergence) *Assume (3.1)-(3.5), (3.7)-(3.9) and (3.12). Then for all $T > 0$, there is a $\epsilon_0 > 0$ such that for $\epsilon < \epsilon_0$ and $t \in [0, T]$, the solution n_ϵ to (1.1) satisfies,*

$$0 < \rho_m \leq \rho_\epsilon(t) := \int_{\mathbb{R}^d} n_\epsilon dx \leq \rho_M + C\epsilon^2, \quad 0 < I_m \leq I_\epsilon(t) \leq I_M + C\epsilon^2 \quad a.e. \quad (3.13)$$

for some constant ρ_m, I_m . Moreover, I_ϵ is uniformly bounded in $BV(\mathbb{R}^+)$ and after extraction of a subsequence I_ϵ

$$I_\epsilon(t) \xrightarrow{\epsilon \rightarrow 0} \bar{I}(t) \quad \text{in } L^1_{loc}(\mathbb{R}^+), \quad I_m \leq \bar{I}(t) \leq I_M \quad \text{a.e.}, \quad (3.14)$$

and $\bar{I}(t)$ is non-decreasing. We also have weakly in the sense of measures for a subsequence n_ϵ

$$n_\epsilon(t, x) \xrightarrow{\epsilon \rightarrow 0} \bar{\rho}(t) \delta(x - \bar{x}(t)). \quad (3.15)$$

Finally, the pair $(\bar{x}(t), \bar{I}(t))$ also satisfies

$$R(\bar{x}(t), \bar{I}(t)) = 0 \quad \text{a.e.} \quad (3.16)$$

In particular, there can be an initial layer on I_ϵ that makes a possible rapid variation of I_ϵ at $t \approx 0$ so that the limit satisfies $R(\bar{x}^0, I(0^+)) = 0$, a relation that might not hold true, even with $O(\epsilon)$, at the level of n_ϵ .

Theorem 3.2 (Form of canonical equation) *Assume (3.1)–(3.12). Then, $\bar{x}(\cdot)$ belongs to $W^{1,\infty}(\mathbb{R}^+; \mathbb{R}^d)$ and satisfies*

$$\dot{\bar{x}}(t) = (-D^2u(t, \bar{x}(t)))^{-1} \cdot \nabla_x R(\bar{x}(t), \bar{I}(t)), \quad \bar{x}(0) = \bar{x}^0, \quad (3.17)$$

with $u(t, x)$ a C^2 -function given below in (5.8), $D^3u \in L^\infty(\mathbb{R}^d)$, and initial data \bar{x}^0 given in (3.11). Furthermore, we have $\bar{I}(t) \in W^{1,\infty}(\mathbb{R}^+)$.

We insist that the Lipschitz continuity at $t = 0$ is with the value $I(0) = \lim_{t \rightarrow 0^+} I(t) \neq \lim_{\epsilon \rightarrow 0} I_\epsilon^0$; the equality might hold if the initial data is well-prepared.

Theorem 3.3 (Long-time behaviour) *With the assumptions (3.1)–(3.12), equation (3.17) has a structure of gradient flow, the limit $\bar{I}(t)$ is increasing and*

$$\bar{I}(t) \xrightarrow{t \rightarrow \infty} I_M, \quad \bar{x}(t) \xrightarrow{t \rightarrow \infty} \bar{x}_\infty = 0. \quad (3.18)$$

Finally, the limit is identified by $\nabla R(\bar{x}_\infty = 0, I_M) = 0$ (according to (3.2)).

It is an open question to know if the full sequence converges. This is to say if the solution to the Hamilton-Jacobi equation is unique. The only uniqueness case in [4] assumes a very particular form of $R(\cdot, \cdot)$.

4 A-priori bounds on $\rho_\epsilon, I_\epsilon$ and their limits

Here, we establish the first statements of Theorem 3.1. As in [3] we can show with (3.2) and (3.5) that $I_\epsilon \leq I_M + C\epsilon^2$. With (3.1) (the bounds on ψ), we also have that

$$\rho_\epsilon(t) \leq I_M/\psi_m + C\epsilon^2. \quad (4.1)$$

To achieve the lower bound away from 0 is more difficult. We multiply the equation (1.1) by ψ and integrate over \mathbb{R}^d , to arrive at

$$\frac{d}{dt} I_\epsilon(t) = \frac{1}{\epsilon} \int \psi R n_\epsilon dx + \epsilon \int n_\epsilon \Delta \psi dx. \quad (4.2)$$

We define $J_\epsilon(t) := \frac{1}{\epsilon} \int \psi R n_\epsilon dx$ and calculate its time derivative

$$\frac{d}{dt} J_\epsilon(t) = \frac{1}{\epsilon} \int \psi R \left(\frac{1}{\epsilon} R n_\epsilon + \epsilon \Delta n_\epsilon \right) dx + \frac{1}{\epsilon} \int \psi n_\epsilon \frac{\partial R}{\partial I} \left(J_\epsilon + \epsilon \int n_\epsilon \Delta \psi dy \right) dx.$$

So we estimate it from below using (3.1), (3.5) and (4.1) by

$$\frac{d}{dt} J_\epsilon(t) \geq -C + \frac{1}{\epsilon} J_\epsilon(t) \int \psi n_\epsilon \frac{\partial R}{\partial I} dx,$$

and we may bound the negative part of J_ϵ by

$$\frac{d}{dt} (J_\epsilon(t))_- \leq C - \frac{\bar{K}_2}{\epsilon} I_\epsilon(t) (J_\epsilon(t))_-. \quad (4.3)$$

Now for ϵ small enough, we can estimate $I_\epsilon(t)$ as

$$I_\epsilon(t) = I_\epsilon(0) + \int_0^t \dot{I}_\epsilon(s) ds = I_\epsilon(0) + \int_0^t J_\epsilon(s) ds + O(\epsilon) \geq I^0/2 - \int_0^t (J_\epsilon(s))_- ds, \quad (4.4)$$

and plugging this in the estimate (4.3) leads to

$$\frac{d}{dt} (J_\epsilon(t))_- \leq C - \frac{\bar{K}_2}{\epsilon} \left(I^0/2 - \int_0^t (J_\epsilon(s))_- ds \right) (J_\epsilon(t))_-.$$

Now for $T > 0$ fixed. If there exists $T' \leq T$ such that $\int_0^{T'} (J_\epsilon(s))_- ds = I^0/4$, then we have

$$\frac{d}{dt} (J_\epsilon(t))_- \leq C - \frac{\bar{K}_2 I^0}{\epsilon 4} (J_\epsilon(t))_-, \quad 0 \leq t \leq T'.$$

Thus we obtain

$$(J_\epsilon(t))_- \leq (J_\epsilon(t=0))_- e^{-\bar{K}_2 I^0 t / (4\epsilon)} + \frac{4C\epsilon}{\bar{K}_2 I^0} \left(1 - e^{-\bar{K}_2 I^0 t / (4\epsilon)} \right).$$

Then for $\epsilon < \epsilon_0(T)$ small enough, we conclude that such a T' does not exist *i.e.*

$$\int_0^T (J_\epsilon(s))_- ds \leq I^0/4. \quad (4.5)$$

So from (4.4), we obtain

$$I_\epsilon(t) \geq I^0/4, \quad (J_\epsilon(t))_- \xrightarrow{\epsilon \rightarrow 0} 0 \quad \text{a. e. in } [0, T]. \quad (4.6)$$

This also gives the lower bound $\rho_m \leq \rho_\epsilon(t)$ with $\rho_m := I^0/(4\psi_M)$.

Finally, the estimate (4.5) and the L^∞ bounds on $I_\epsilon(t)$ give us a local BV bound, which will eventually allow us to extract a convergent subsequence for which (3.14) holds. The obtained limit function $\bar{I}(t)$ is non-decreasing because in the limit the right-hand side of (4.2) is almost everywhere non-negative.

5 Estimates on u_ϵ and its limit u

In this section we introduce the major ingredient in our study, the function $u_\epsilon := \epsilon \ln(n_\epsilon)$. We calculate

$$\partial_t n_\epsilon = n_\epsilon \partial_t u_\epsilon / \epsilon, \quad \nabla n_\epsilon = n_\epsilon \nabla u_\epsilon / \epsilon, \quad \Delta n_\epsilon = n_\epsilon \Delta u_\epsilon / \epsilon + n_\epsilon |\nabla u_\epsilon|^2 / \epsilon^2.$$

Plugging this in (1.1), we obtain that u_ϵ satisfies the Hamilton-Jacobi equation

$$\begin{cases} \partial_t u_\epsilon = |\nabla u_\epsilon|^2 + R(x, I_\epsilon(t)) + \epsilon \Delta u_\epsilon, & x \in \mathbb{R}^d, t \geq 0, \\ u_\epsilon(t=0) = \epsilon \ln(n_\epsilon^0) := u_\epsilon^0. \end{cases} \quad (5.1)$$

Our study of the concentration effect relies mainly on the asymptotic analysis of the family u_ϵ and in particular on its uniform regularity. We will pass to the (classical) limit in (5.1), and this relies on the

Lemma 5.1 *With the assumptions of Theorem 3.1, we have for $t \geq 0$,*

$$-\underline{L}_0 - \underline{L}_1 |x|^2 - \epsilon 2d \underline{L}_1 t \leq u_\epsilon(t, x) \leq \bar{L}_0 - \bar{L}_1 |x|^2 + (\bar{K}_0 + 2d\epsilon \bar{L}_1) t, \quad (5.2)$$

$$-2\underline{L}_1 \leq D^2 u_\epsilon(t, x) \leq -2\bar{L}_1. \quad (5.3)$$

This Lemma relies on a wellknown (and widely used) fact that the Hamilton-Jacobi equations have a regime of regular solutions with concavity assumptions, [1, 19].

5.1 Quadratic estimates on u_ϵ

First we achieve an upper bound, defining $\bar{u}_\epsilon(t, x) := \bar{L}_0 - \bar{L}_1 |x|^2 + C_0(\epsilon)t$ with $C_0(\epsilon) := \bar{K}_0 + 2d\epsilon \bar{L}_1$, we obtain thanks to (3.3), (3.8) and (3.12) that $\bar{u}_\epsilon(t=0) \geq u_\epsilon^0$ and

$$\partial_t \bar{u}_\epsilon - |\nabla \bar{u}_\epsilon|^2 - R(x, I_\epsilon) - \epsilon \Delta \bar{u}_\epsilon \geq C_0(\epsilon) - 4\bar{L}_1^2 |x|^2 - \bar{K}_0 + \bar{K}_1 |x|^2 - 2d\epsilon \bar{L}_1 \geq 0.$$

Next for the lower bound, we define $\underline{u}_\epsilon(t, x) := -\underline{L}_0 - \underline{L}_1 |x|^2 - \epsilon C_1 t$ with $C_1 := 2d\underline{L}_1$, we have $\underline{u}_\epsilon(t=0) \leq u_\epsilon^0$ and

$$\partial_t \underline{u}_\epsilon - |\nabla \underline{u}_\epsilon|^2 - R(x, I_\epsilon) - \epsilon \Delta \underline{u}_\epsilon \leq -\epsilon C_1 - 4\underline{L}_1^2 |x|^2 + \underline{K}_1 |x|^2 + \epsilon 2d \underline{L}_1 \leq 0.$$

This concludes the proof of the first part of Lemma 5.1 *i.e.* inequality 5.2.

5.2 Bounds on $D^2 u_\epsilon$

We show that the semi-convexity and the concavity of the initial data is preserved by equation (5.1). For a unit vector ξ , we use the notation $u_\xi := \nabla_\xi u_\epsilon$ and $u_{\xi\xi} := \nabla_{\xi\xi}^2 u_\epsilon$ to obtain

$$\begin{aligned} u_{\xi t} &= R_\xi(x, I) + 2\nabla u \cdot \nabla u_\xi + \epsilon \Delta u_\xi, \\ u_{\xi\xi t} &= R_{\xi\xi}(x, I) + 2\nabla u_\xi \cdot \nabla u_\xi + 2\nabla u \cdot \nabla u_{\xi\xi} + \epsilon \Delta u_{\xi\xi}. \end{aligned}$$

The first step is to obtain a lower bound on the second derivative *i.e.* semi-convexity. It can be obtained in the same way as in [24]: Using $|\nabla u_\xi| \geq |u_{\xi\xi}|$ and the definition $\underline{w}(t, x) := \min_\xi u_{\xi\xi}(t, x)$ leads to the inequality

$$\partial_t \underline{w} \geq -2\underline{K}_1 + 2\underline{w}^2 + 2\nabla u \cdot \nabla \underline{w} + \epsilon \Delta \underline{w}.$$

By a comparison principle and assumptions (3.9), (3.12), we obtain

$$\underline{w} \geq -2\underline{L}_1. \quad (5.4)$$

At every point $(t, x) \in \mathbb{R}^+ \times \mathbb{R}^d$, we can choose an orthonormal basis such that $D^2 u_\epsilon(t, x)$ is diagonal because every symmetric matrix can be diagonalized by an orthogonal matrix. So we can estimate the mixed second derivatives in terms of $u_{\xi\xi}$. Especially we have $|\nabla u_\xi| = |u_{\xi\xi}|$.

This enables us to show concavity in the next step. We start from the definition $\overline{w}(t, x) := \max_\xi u_{\xi\xi}(t, x)$ and the inequality

$$\partial_t \overline{w} \leq -2\overline{K}_1 + 2\overline{w}^2 + 2\nabla u \cdot \nabla \overline{w} + \epsilon \Delta \overline{w}.$$

By a comparison principle and assumptions (3.9), (3.12), we obtain

$$\overline{w} \leq -2\overline{L}_1. \quad (5.5)$$

From the space regularity gained and (3.9), we obtain ∇u_ϵ locally uniformly bounded and thus from (5.1) for $\epsilon < \epsilon_0$ that $\partial_t u_\epsilon$ is locally uniformly bounded.

5.3 Passing to the limit

From the regularity obtained in section 5.2, it follows that we can extract a subsequence such that, for all $T > 0$,

$$u_\epsilon(t, x) \xrightarrow{\epsilon \rightarrow 0} u(t, x) \text{ strongly in } L^\infty \left(0, T; W_{loc}^{1, \infty}(\mathbb{R}^d) \right),$$

$$u_\epsilon(t, x) \xrightarrow{\epsilon \rightarrow 0} u(t, x) \text{ weakly-* in } L^\infty \left(0, T; W_{loc}^{2, \infty}(\mathbb{R}^d) \right) \cap W^{1, \infty} \left(0, T; L_{loc}^\infty(\mathbb{R}^d) \right),$$

and

$$-\underline{L}_0 - \underline{L}_1 |x|^2 \leq u(t, x) \leq \overline{L}_0 - \overline{L}_1 |x|^2 + \overline{K}_0 t, \quad -2\underline{L}_1 \leq D^2 u(t, x) \leq -2\overline{L}_1 \quad \text{a.e.} \quad (5.6)$$

$$u \in W_{loc}^{1, \infty}(\mathbb{R}^+ \times \mathbb{R}^d). \quad (5.7)$$

Notice that the uniform $W_{loc}^{2, \infty}(\mathbb{R}^d)$ regularity also allows to differentiate the equation in time, and find

$$\frac{\partial^2}{\partial t^2} u = \frac{\partial}{\partial I} R(x, I(t)) \frac{dI(t)}{dt} + 2\nabla u \cdot [\nabla R(x, I(t)) + D^2 u \cdot \nabla u].$$

This is not enough to have C^1 regularity on u .

We also obtain that u satisfies in the viscosity sense (modified as in [4, 24]) the equation

$$\begin{cases} \frac{\partial}{\partial t} u = R(x, I(t)) + |\nabla u|^2, \\ \max_{\mathbb{R}^d} u(t, x) = 0. \end{cases} \quad (5.8)$$

The constraint that the maximum vanishes is achieved, as in [3], from the a priori bounds on I_ϵ and (5.6).

In particular u is strictly concave, therefore it has exactly one maximum. This proves (3.15) *i.e.* n stays monomorphic and characterizes the Dirac location by

$$\max_{\mathbb{R}^d} u(t, x) = 0 = u(t, \bar{x}(t)). \quad (5.9)$$

Moreover, as in [24] we can achieve (3.16) at each Lebesgue point of $I(t)$.

This completes the proof of Theorem 3.1.

6 Canonical equation, time asymptotic

With the additional assumptions (3.6) and (3.10), we can write our form of the canonical equation and show long-time behavior. To do so, we first show that the third derivative is bounded. This allows us to establish rigorously the canonical equation while it was only formally given in [13, 24]. From this equation, we obtain regularity on \bar{x} and \bar{I} . For long-time behavior we show that \bar{I} is strictly increasing as long as $\nabla R(\bar{x}, \bar{I}) \neq 0$ and this is based on the gradient flow structure of the equation.

6.1 Bounds on third derivatives of u_ϵ

For the unit vectors ξ and η , we use the notation $u_\xi := \nabla_\xi u_\epsilon$, $u_{\xi\eta} := \nabla_{\xi\eta}^2 u_\epsilon$ and $u_{\xi\xi\eta} := \nabla_{\xi\xi\eta}^3 u_\epsilon$ to derive

$$\partial_t u_{\xi\xi\eta} = 4\nabla u_{\xi\eta} \cdot \nabla u_\xi + 2\nabla u_\eta \cdot \nabla u_{\xi\xi} + 2\nabla u \cdot \nabla u_{\xi\xi\eta} + R_{\xi\xi\eta} + \epsilon \Delta u_{\xi\xi\eta}.$$

Again we can fix a point (t, x) and choose an orthonormal basis such that $D^2(\nabla_\eta u_\epsilon(t, x))$ is diagonal. Let us define

$$M_1(t) := \max_{x, \xi, \eta} u_{\xi\xi\eta}(t, x).$$

Since $-u_{\xi\xi\eta}(t, x) = \nabla_{-\eta} u_{\xi\xi}(t, x)$, we have $M_1(t) = \max_{x, \xi, \eta} |u_{\xi\xi\eta}(t, x)|$. So with the maximum principle we obtain

$$\frac{d}{dt} M_1 \leq 4dM_1 \|D^2 u_\epsilon\|_\infty + 2dM_1 \|D^2 u_\epsilon\|_\infty + R_{\xi\xi\eta}.$$

Assumption (3.10) gives us a bound on $M_1(t = 0)$. So we obtain a L^∞ -bound on the third derivative uniform in ϵ .

6.2 Maximum points of u_ϵ

Now we wish to establish the canonical equation. We denote the maximum point of $u_\epsilon(t, \cdot)$ by $\bar{x}_\epsilon(t)$.

Since $u_\epsilon \in C^2$, at maximum points we have $\nabla u_\epsilon(t, \bar{x}_\epsilon(t)) = 0$ and thus

$$\frac{d}{dt} \nabla u_\epsilon(t, \bar{x}_\epsilon(t)) = 0.$$

The chain rule gives

$$\frac{\partial}{\partial t} \nabla u_\epsilon(t, \bar{x}_\epsilon(t)) + D_x^2 u_\epsilon(t, \bar{x}_\epsilon(t)) \dot{\bar{x}}_\epsilon(t) = 0,$$

and using the equation (5.1), it follows further that, for almost every t ,

$$D_x^2 u_\epsilon(t, \bar{x}_\epsilon(t)) \dot{\bar{x}}_\epsilon(t) = -\frac{\partial}{\partial t} \nabla u_\epsilon(t, \bar{x}_\epsilon(t)) = -\nabla_x R(\bar{x}_\epsilon(t), I_\epsilon(t)) - \epsilon \Delta \nabla_x u_\epsilon.$$

Due to the uniform in ϵ bound on $D^3 u_\epsilon$ and $R \in C^2$, we can pass to the limit in this equation and arrive at

$$\dot{\bar{x}}(t) = (-D^2 u(\bar{x}(t), t))^{-1} \cdot \nabla_x R(\bar{x}(t), \bar{I}(t)) \quad a.e.$$

But we can obtain further regularity in the limit and obtain the equations in the classical sense. We first notice that, from $R(\bar{x}(t), \bar{I}(t)) = 0$ and the assumptions (3.3), $\bar{x}(t)$ is bounded in $L^\infty(\mathbb{R}^+)$. So we obtain that $\bar{x}(t)$ is bounded in $W^{1,\infty}(\mathbb{R}^+)$. Because $I \mapsto R(\cdot, I)$ is invertible, it follows that $\bar{I}(t)$ is bounded in $W^{1,\infty}(\mathbb{R}^+)$; more precisely we may differentiate the relation (3.16) (because $R \in C^2$) and find a differential equation on $I(t)$ that will be used later:

$$\dot{\bar{x}}(t) \cdot \nabla_x R + \dot{\bar{I}}(t) \nabla_I R = 0.$$

This completes the proof of Theorem 3.2.

6.3 Long-time behaviour

It remains to prove the long time behaviour stated in Theorem 3.3.

We start from the canonical equation

$$\frac{d}{dt} \bar{x}(t) = (-D^2 u)^{-1} \nabla R(\bar{x}(t), \bar{I}(t)),$$

and use some kind of gradient flow structure. We calculate

$$\begin{aligned} \frac{d}{dt} R(\bar{x}(t), \bar{I}(t)) &= \nabla R(\bar{x}(t), \bar{I}(t)) \frac{d}{dt} \bar{x}(t) + R_I(\bar{x}(t), \bar{I}(t)) \frac{d\bar{I}}{dt} \\ &= \nabla R(\bar{x}(t), \bar{I}(t)) (-D^2 u)^{-1} \nabla R(\bar{x}(t), \bar{I}(t)) + R_I(\bar{x}(t), \bar{I}(t)) \frac{d\bar{I}}{dt}. \end{aligned}$$

Now we also know from (3.16) that the left hand side vanishes. Then, we obtain

$$\frac{d}{dt} \bar{I}(t) = \frac{-1}{R_I(\bar{x}(t), \bar{I}(t))} \nabla R(\bar{x}(t), \bar{I}(t)) (-D^2 u)^{-1} \nabla R(\bar{x}(t), \bar{I}(t)) \geq 0.$$

The inequality is strict as long as $\bar{I}(t) < I_M$. Consequently, we recover that $\bar{I}(t)$ is non-decreasing, as $t \rightarrow \infty$, $\bar{I}(t)$ converges, and subsequences of $\bar{x}(t)$ converge also (recall that $\bar{x}(t)$ is bounded). But we discover that the only possible limits are such that $\nabla R(\bar{x}_\infty, I_\infty) = 0$. With relation (3.16), assumptions (3.2) and (3.5) this identifies the limit as announced in Theorem 3.3.

7 Numerics

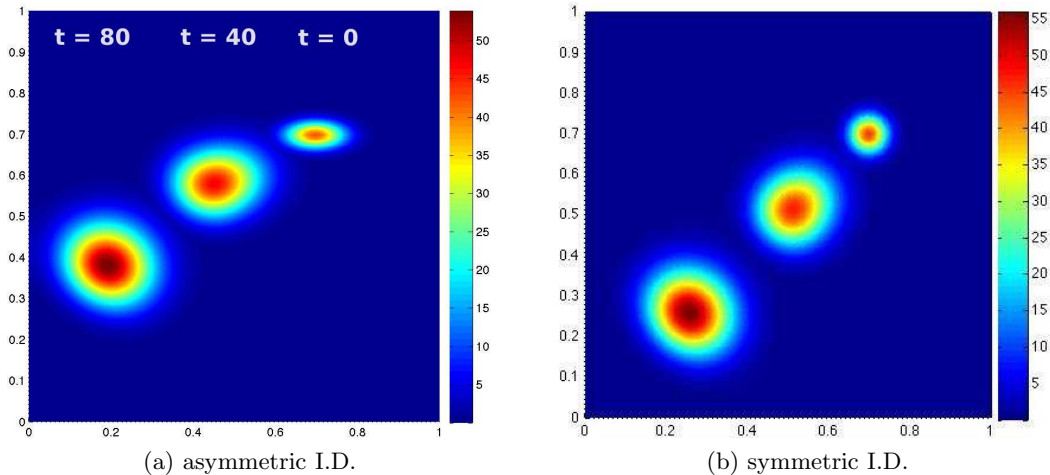


Figure 1: Dynamics of the density n with asymmetric initial data (7.1) (left) and symmetric initial data (7.2) (right). These computations illustrate the effect of the matrix $(-D^2u)^{-1}$ in the dynamics of the concentration point according to the form of canonical equation (3.17).

The canonical equation is not self-contained because the effect of mutations appears through the matrix $(-D^2u)^{-1}$. Nevertheless it can be used to explain several effects. The purpose of this section is firstly to illustrate how it acts on the dynamics, secondly to see the effect of ϵ being not exactly zero, and thirdly to explain why it is generic, in high dimensions as well as in one dimension [24] that pointwise Dirac masses (and not on curves) can exist.

We first illustrate the fact that a isotropic approximation of a Dirac mass will give rise to different dynamics than an anisotropic. This anisotropy is measured with u and we choose two initial data. In the first case $-D^2u^0$ is "far" from the identity matrix and in the second case it is isotropic:

$$n_0(x, y) = C_{\text{mass}} \exp(-(x - .7)^2/\epsilon - 5(y - .7)^2/\epsilon), \quad (7.1)$$

$$n_0(x, y) = C_{\text{mass}} \exp(-2.4(x - .7)^2/\epsilon - 2.4(y - .7)^2/\epsilon). \quad (7.2)$$

We also choose a growth rate R with gradient along the diagonal:

$$R(x, y, I) = 2 - I - (x + y). \quad (7.3)$$

Here although, we start with initial data centered on the diagonal and ∇R pointing along the diagonal to the origin, the concentration point leaves the diagonal with the anisotropic initial data (7.1) (cf. Figure 1 (a)). The isotropic initial data moves along the diagonal as expected by symmetry reasons (cf. Figure 1 (b)).

The numerics has been performed in Matlab with parameters as follows. The three plots correspond to $t = 0, 40$ and 80 in units of dt : ϵ is chosen to be 0.005 and C_{mass} such that the initial

mass in the computational domain is equal to 0.3. The equation is solved by an implicit-explicit finite-difference method on square grid consisting of 100×100 points (time step $dt = 0.01$).

The second example is to illustrate the role of the parameter ϵ for symmetric initial data:

$$n_0(x, y) = C_{\text{mass}} \exp(-(x - .3)^2/\epsilon - (y - .3)^2/\epsilon), \quad (7.4)$$

$$R(x, y, I(t)) = 0.9 - I + 5(y - .3)_+^2 + 2.3(x - .3) \quad \text{with } I(t) := \int n(t, x) dx. \quad (7.5)$$

In this example, we start with symmetric initial data centered on the line $y = 0.3$ and the gradient of R along this line ($y = 0.3$) is $(1, 0)$. Hence, the canonical equation in the limit $\epsilon = 0$ predicts a motion in the x direction on this line. One however observes in Figure 2 that the maximum point leaves this line because ϵ does not vanish. Notice that $R \equiv 0$ below the line $y = 0.3$.

In this computation, performed with Matlab, ϵ is chosen to be 0.004, C_{mass} such that the initial mass in the computational domain is equal to 0.3 and square grid consisting of 150×150 points (time step $dt = 8.8889 \cdot 10^{-4}$).

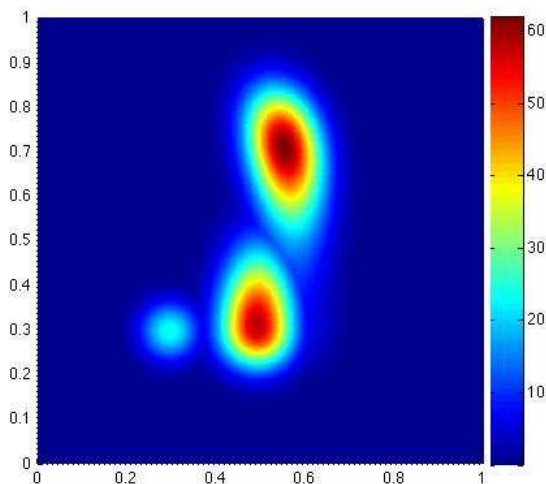


Figure 2: This figure illustrates the effect of ϵ being not exactly zero. The dynamics of the density n with symmetric initial data is plotted for $t = 0, 160$ and 220 in units of dt and the limiting behavior is a motion along the axis $y = 0.3$.

With our third example we wish to illustrate that, except in particular symmetric geometries, only a single Dirac mass can be sustained by our Lotka-Volterra equations. We place initially two symmetric deltas on the x and the y -axis:

$$n_0(x, y) = C_{\text{mass}} \left[\exp\left(-\frac{2.4}{\epsilon} \left((x - .25\sqrt{2})^2 + y^2\right)\right) + \exp\left(-\frac{2.4}{\epsilon} \left((y - .25\sqrt{2})^2 + x^2\right)\right) \right], \quad (7.6)$$

We seek for asymmetry in the growth rate R under the form

$$R(x, y, I) = 3 - 1.5I + 5.6(y^2 + R_e x^2). \quad (7.7)$$

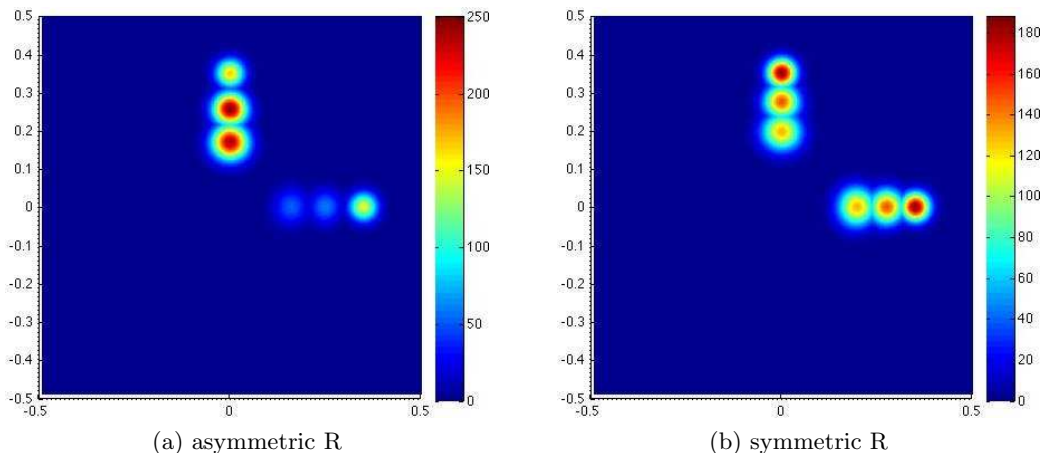


Figure 3: This figure illustrates that, except particular symmetry conditions, a single Dirac mass is exhibited by Lotka-Volterra equations. We depict the density n with asymmetric (left) and symmetric (right) growth rate R plotted for $t = 5, 90$ and 180 in units of dt .

In the special case $R_e = 1$, all isolines of R are circles then the two concentration points just move symmetrically to the origin cf. 3 (b). However, if we choose $R_e = 1.1$ *i.e.* all isolines of R are ellipses then one of the two concentration points disappears cf. Figure 3 (a). The intuition behind is that the canonical equation (3.17) should hold for the two points. However the constraint (3.16) given by $\rho(t)$ is the same for the two points and this is a contradiction. One of the two points has to disappear right away.

The numerics is performed with $\epsilon = 0.003$ and C_{mass} such that the initial mass in the computational domain is equal to 0.3. The equation is solved by an implicit-explicit finite-difference method on square grid consisting of 100×100 points (time step $dt = 0.001$).

8 Extension: non-constant diffusion

Our results can be extended to include a diffusion coefficient depending on x . This leads to the equation

$$\partial_t n_\epsilon - \epsilon \nabla \cdot (b(x) \nabla n_\epsilon) = \frac{n_\epsilon}{\epsilon} R(x, I_\epsilon(t)), \quad t > 0, x \in \mathbb{R}^d. \quad (8.1)$$

Our assumptions on b are that there are positive constants b_m, b_M, B_1, B_2 and B_3 such that

$$b_m \leq b \leq b_M, \quad |\nabla b(x)| \leq B_1 \frac{1}{1 + |x|}, \quad |Tr(D^2 b(x))| \leq B_2 \frac{1}{(1 + |x|)^2}, \quad |D^3 b| \leq B_3. \quad (8.2)$$

Our assumptions on the initial data and on R are the same, as before (3.1)–(3.11). However, we have to supplement the assumption (3.5) to take b into account:

$$\nabla b \cdot \nabla(\psi R) \geq -K_3. \quad (8.3)$$

These assumptions will in the following allow us to obtain a gradient bound

$$|\nabla u_\epsilon(t, x)| \leq C_{\nabla u} (1 + |x|). \quad (8.4)$$

This bound enables us to formulate the compatibility conditions which replace (3.8): we need

$$B_2 C_{\nabla u}^2 - 2\bar{K}_1 < 0 \quad (8.5)$$

and define

$$\begin{aligned} \bar{K}_b &:= \frac{2B_1 - \sqrt{4B_1^2 - 2b_M (B_2 C_{\nabla u}^2 - 2\bar{K}_1)}}{b_M}, \\ \underline{K}_b &:= \frac{-2B_1 - \sqrt{4B_1^2 + 2b_m (B_2 C_{\nabla u}^2 + 2\underline{K}_1)}}{b_m}, \end{aligned}$$

to require

$$-\underline{K}_b \leq D^2 u_\epsilon^0 \leq -\bar{K}_b, \quad (8.6)$$

$$4b_M \bar{L}_1^2 \leq \bar{K}_1 \leq \underline{K}_1 \leq 4b_m \underline{L}_1^2. \quad (8.7)$$

Our goal is to prove the following

Theorem 8.1 (Convergence) *Assume (3.1)-(3.5), (3.8), (8.2), (8.3), (8.5), (8.6) and (8.7). Then the solution n_ϵ to (8.1) satisfies for all $T > 0$, for ϵ small enough and $t \in [0, T]$*

$$0 < \rho_m \leq \rho_\epsilon(t) \leq \rho_M + C\epsilon^2, \quad I_m \leq I_\epsilon(t) \leq I_M + C\epsilon^2 \quad a.e. \quad (8.8)$$

Moreover, there is a subsequence I_ϵ such that

$$I_\epsilon(t) \xrightarrow{\epsilon \rightarrow 0} \bar{I}(t) \quad \text{in } L^1_{loc}(\mathbb{R}^+), \quad I_m \leq \bar{I}(t) \leq I_M \quad a.e., \quad (8.9)$$

and $\bar{I}(t)$ is non-decreasing. Furthermore, we have weakly in the sense of measures for a subsequence n_ϵ

$$n_\epsilon(t, x) \xrightarrow{\epsilon \rightarrow 0} \bar{\rho}(t) \delta(x - \bar{x}(t)), \quad (8.10)$$

and the pair $(\bar{x}(t), \bar{I}(t))$ also satisfies

$$R(\bar{x}(t), \bar{I}(t)) = 0 \quad a.e. \quad (8.11)$$

Theorem 8.2 (Form of canonical equation) *With the assumptions (3.1)-(3.8), (3.10), (3.11), (8.2), (8.3), (8.5), (8.6) and (8.7), \bar{x} is a $W^{1,\infty}(\mathbb{R}^+)$ -function satisfying*

$$\dot{\bar{x}}(t) = (-D^2 u(t, \bar{x}(t)))^{-1} \cdot \nabla_x R(\bar{x}(t), \bar{I}(t)), \quad \bar{x}(0) = \bar{x}^0, \quad (8.12)$$

with $u(t, x)$ a C^2 -function given below in (8.21), $D^3 u \in L^\infty(\mathbb{R}^d)$, and initial data \bar{x}^0 given in (3.11). Furthermore, we have $\bar{I}(t) \in W^{1,\infty}(\mathbb{R}^+)$.

The end of this section is devoted to the proof of these Theorems. The a priori bounds (8.8), (8.9) on ρ_ϵ and I_ϵ can be established as before.

As before we study the function $u_\epsilon := \epsilon \ln(n_\epsilon)$. We obtain that u_ϵ satisfies the Hamilton-Jacobi equation

$$\begin{cases} \partial_t u_\epsilon = R(x, I_\epsilon(t)) + b|\nabla u_\epsilon|^2 + \epsilon \nabla b \cdot \nabla u_\epsilon + \epsilon b \Delta u_\epsilon, & t > 0, x \in \mathbb{R}^d, \\ u_\epsilon(t=0) = \epsilon \ln(n_\epsilon^0). \end{cases} \quad (8.13)$$

In order to adapt our method to this equation we need a bound on the gradient of u_ϵ . We achieve this following arguments in [20, 3]:

gradient bound Let us define $v(t, x)$ by $u_\epsilon = K_v - v^2$ where we choose K_v large enough to have $v > \delta > 0$ on $[0, T]$ uniform in ϵ . We calculate

$$\nabla u_\epsilon = -2v\nabla v \quad \text{and} \quad \Delta u_\epsilon = -2v\Delta v - 2|\nabla v|^2$$

and obtain from (8.13)

$$-2v\partial_t v = R + 4bv^2|\nabla v|^2 - 2\epsilon\nabla b \cdot v\nabla v - 2\epsilon vb\Delta v - 2\epsilon b|\nabla v|^2. \quad (8.14)$$

Dividing by $-2v$, taking the derivative with respect to x_i and defining $p := \nabla v$, we have

$$\begin{aligned} \partial_t p_i = - \left(\frac{R}{2v} \right)_{x_i} &- 2p_i b |p|^2 - 2vb_{x_i} |p|^2 - 4vbp \cdot \nabla p_i + \epsilon \nabla b_{x_i} \cdot p + \epsilon \nabla b \cdot \nabla p_i \\ &+ \epsilon b_{x_i} \Delta v + \epsilon b \Delta p_i + \epsilon \frac{b_{x_i}}{v} |p|^2 - \epsilon \frac{b}{v^2} |p|^2 p_i + 2\epsilon \frac{b}{v} p \cdot \nabla p_i. \end{aligned}$$

Multiplying (8.14) by $\frac{b_{x_i}}{2bv}$ and adding to the equation above, we obtain

$$\begin{aligned} \partial_t \left(p_i - \frac{b_{x_i} v}{b} \right) &= - \left(\frac{R}{2v} \right)_{x_i} - 2p_i b |p|^2 - 2vb_{x_i} |p|^2 - 4vbp \cdot \nabla p_i + \epsilon \nabla b_{x_i} \cdot p + \epsilon \nabla b \cdot \nabla p_i \\ &+ \epsilon b \Delta p_i + \epsilon \frac{b_{x_i}}{v} |p|^2 - \epsilon \frac{b}{v^2} |p|^2 p_i + 2\epsilon \frac{b}{v} p \cdot \nabla p_i + \frac{b_{x_i} R}{2bv} + 2b_{x_i} v |p|^2 - \epsilon \frac{b_{x_i}}{b} \nabla b \cdot p - \epsilon \frac{b_{x_i}}{v} |p|^2. \end{aligned}$$

Now we define

$$M_b(t) := \max_{i,x} [(p_i)_-, (p_i)_+] \geq 0. \quad (8.15)$$

For $\max_{i,x} (p_i)_- \leq \max_{i,x} (p_i)_+$, we have

$$\begin{aligned} \partial_t \left(M_b - \frac{b_{x_i} v}{b} \right) &\leq C - 2b_m M_b^3 + 2|v||b_{x_i}|d^2 M_b^2 + \epsilon d |\nabla b_{x_i}| M_b \\ &+ \epsilon \frac{|b_{x_i}|}{\delta} d^2 M_b^2 + C + 2|b_{x_i}||v|d^2 M_b^2 + \epsilon \frac{|b_{x_i}|}{b_m} d |\nabla b| M_b + \epsilon \frac{|b_{x_i}|}{\delta} d^2 M_b^2. \end{aligned}$$

Since $\frac{b_{x_i} v}{b}$ is bounded, we have M_b bounded from above.

For $\max_{i,x} (p_i)_- > \max_{i,x} (p_i)_+$, we show similarly a bound on M_b and therefore achieve (8.4).

To prove the concavity and semi-convexity results, we only give formal arguments for the limit case. To adapt the argument for the ϵ -case is purely technical:

For a unit vector ξ , we define $u_\xi := \nabla_\xi u_\epsilon$ and $u_{\xi\xi} := \nabla_{\xi\xi} u_\epsilon$ to obtain

$$\partial_t u_\xi = R_\xi + b_\xi |\nabla u|^2 + 2b \nabla u \cdot \nabla u_\xi, \quad (8.16)$$

and

$$\partial_t u_{\xi\xi} = R_{\xi\xi} + b_{\xi\xi} |\nabla u|^2 + 4b_\xi \nabla u \cdot \nabla u_\xi + 2b \nabla u \cdot \nabla u_{\xi\xi} + 2b |\nabla u_\xi|^2. \quad (8.17)$$

With the definition $\bar{w}(t, x) := \max_\xi u_{\xi\xi}(t, x)$ and assumptions (8.2) we have

$$\partial_t \bar{w} \leq -2\bar{K}_1 + B_2 C_{\nabla u}^2 + 4B_1 |\bar{w}| + 2b \nabla u \cdot \nabla \bar{w} + 2b_M \bar{w}^2.$$

With assumption (8.5), 0 is a supersolution to

$$\partial_t \bar{w}^* = -2\bar{K}_1 + B_2 C_{\nabla u}^2 - 4B_1 \bar{w}^* + 2b \nabla u \cdot \nabla \bar{w}^* + 2b_M (\bar{w}^*)^2,$$

so we know from assumption (8.6) that $\bar{w} \leq 0$. Therefore it follows further that

$$\bar{w} \leq \bar{K}_b.$$

For the lower bound, we use the definition $\underline{w}(t, x) := \min_{\xi} u_{\xi\xi}(t, x)$ and the inequality

$$\partial_t \underline{w} \geq -2\underline{K}_1 - B_2 C_{\nabla u}^2 - 4B_1 |\underline{w}| + 2b \nabla u \cdot \nabla \underline{w} + 2b_m \underline{w}^2.$$

Since we already know that $\underline{w} \leq 0$, we obtain

$$\underline{w} \geq \underline{K}_b.$$

We can achieve this at the ϵ -level using the equation

$$\partial_t u_{\xi} = R_{\xi} + b_{\xi} |\nabla u|^2 + 2b \nabla u \cdot \nabla u_{\xi} + \epsilon \nabla b_{\xi} \cdot \nabla u + \epsilon \nabla b \cdot \nabla u_{\xi} + \epsilon b_{\xi} \Delta u + \epsilon b \Delta u_{\xi}, \quad (8.18)$$

and

$$\begin{aligned} \partial_t u_{\xi\xi} &= R_{\xi\xi} + b_{\xi\xi} |\nabla u|^2 + 4b_{\xi} \nabla u \cdot \nabla u_{\xi} + 2b \nabla u \cdot \nabla u_{\xi\xi} + 2b |\nabla u_{\xi}|^2 \\ &\quad + \epsilon \nabla b_{\xi\xi} \cdot \nabla u + 2\epsilon \nabla b_{\xi} \cdot \nabla u_{\xi} + \epsilon \nabla b \cdot \nabla u_{\xi\xi} + \epsilon b_{\xi\xi} \Delta u + 2\epsilon b_{\xi} \Delta u_{\xi} + \epsilon b \Delta u_{\xi\xi}. \end{aligned} \quad (8.19)$$

Now we define

$$f := \frac{2b_{\xi}}{b} \quad \text{and} \quad g := \frac{bb_{\xi\xi} - 2b_{\xi}^2}{b^2},$$

multiply (8.18) by f , subtract it from (8.19), multiply (8.13) by g , subtract it to obtain

$$\begin{aligned} \partial_t (u_{\xi\xi} - f u_{\xi} - g u) &= R_{\xi\xi} + 2b \nabla u \cdot \nabla u_{\xi\xi} + 2b |\nabla u_{\xi}|^2 + \epsilon \nabla b_{\xi\xi} \cdot \nabla u \\ &\quad + 2\epsilon \nabla b_{\xi} \cdot \nabla u_{\xi} + \epsilon \nabla b \cdot \nabla u_{\xi\xi} + \epsilon b \Delta u_{\xi\xi} - f R_{\xi} - \epsilon f \nabla b_{\xi} \cdot \nabla u - \epsilon f \nabla b \cdot \nabla u_{\xi} - g R - \epsilon g \nabla b \cdot \nabla u. \end{aligned} \quad (8.20)$$

The remaining steps can be done similar as before. For the Hamilton-Jacobi-equation on u , we obtain the variant

$$\begin{cases} \partial_t u = R(x, \bar{I}(t)) + b(x) |\nabla u|^2, \\ \max_{x \in \mathbb{R}^d} u(t, x) = 0, \quad \forall t \geq 0. \end{cases} \quad (8.21)$$

9 Local competition

The other class of models we handle are populations with localized competition kernel $C(x, y) \geq 0$, that is

$$\partial_t n_{\epsilon}(t, x) = \frac{1}{\epsilon} n_{\epsilon}(t, x) \left(r(x) - \int_{\mathbb{R}^d} C(x, y) n_{\epsilon}(t, y) dy \right) + \epsilon \Delta n_{\epsilon}(t, x). \quad (9.1)$$

The term $r(x)$ is the intra-specific growth rate (and has a priori no sign) and the integral term models an additional contribution to the death rate due to competition between different traits. Notice that the choice $C(x, y) = \psi(y)\Phi(x)$ will reduce this model to a particular case of those in (1.1). This class of model is also very standard, see [9, 22, 6, 7, 26] and the references therein.

For the initial data, we assume as before (3.8)–(3.11). Concerning $r(x)$ and $C(x, y)$ we assume C^1 regularity and that there are constants $\rho_M > 0$, $\underline{K}'_1 > 0$... such that

$$C(x, x) > 0 \quad \forall x \in \mathbb{R}^d, \quad (9.2)$$

$$\int_{\mathbb{R}^d} \int_{\mathbb{R}^d} n(x)C(x, y)n(y) dy dx \geq \frac{1}{\rho_M} \int_{\mathbb{R}^d} n(x) dx \int_{\mathbb{R}^d} r(x)n(x) dx \quad \forall n \in L^1_+(\mathbb{R}^d). \quad (9.3)$$

This assumption is weaker than easier conditions of the type

$$C(x, y) \geq \frac{1}{\rho_M}r(x) \quad \text{or} \quad C(x, y) \geq \frac{1}{2\rho_M}[r(x) + r(y)].$$

Because it is restricted to positive functions, it is a pointwise positivity condition on $C(x, y)$ in opposition to the positivity as operator that occurs for the entropy method in [18].

Then, we make again concavity assumptions. Namely that concavity on r is strong enough to compensate for concavity in C

$$-\underline{K}'_1|x|^2 \leq r(x) - \sup_y C(x, y)\rho_M \leq r(x) \leq \overline{K}'_0 - \overline{K}'_1|x|^2, \quad (9.4)$$

$$-2\underline{K}'_1 \leq D^2r(x) - \sup_y (D^2C(x, y))_+\rho_M \leq D^2r(x) + \sup_y (D^2C(x, y))_-\rho_M \leq -2\overline{K}'_1, \quad (9.5)$$

as symmetric matrices, where the positive and negative parts are taken componentwise. As for regularity, we will use

$$D^3r - \sup_y (D^3C(\cdot, y))_+\rho_M, \quad D^3r + \sup_y (D^3C(\cdot, y))_-\rho_M \in L^\infty(\mathbb{R}^d). \quad (9.6)$$

The initial data is still supposed to concentrate at a point \bar{x}^0 following (3.8)–(3.11). But because persistence, i.e. that n_ϵ does not vanish, is more complicated to control, we need two new conditions

$$r(\bar{x}^0) > 0, \quad (9.7)$$

$$\int_{\mathbb{R}^d} n_\epsilon(t, x) dx \leq \rho_M^0. \quad (9.8)$$

We also need a compatibility condition with R

$$4\overline{L}'_1 \leq \overline{K}'_1 \leq \underline{K}'_1 \leq 4\underline{L}'_1. \quad (9.9)$$

The interpretation of our assumptions is that the intra-specific growth rate r dominates strongly the competition kernel. This avoids the branching patterns that are usual in this kind of models [22, 17, 25, 26]. Our concavity assumptions also implies that there is no continuous solution N to the steady state equation without mutations $N(x) (r(x) - \int_{\mathbb{R}^d} C(x, y)N(y) dy) = 0$. This makes a difference with the entropy method used in [18] as well as the positivity condition on the kernel that, compared to (9.3), also involves $r(x)$.

Our goal is to prove the following results

Theorem 9.1 (Convergence) *With the assumptions (9.2)–(9.5) and (3.8), (9.8)–(9.9), the solution n_ϵ to (9.1) satisfies,*

$$0 \leq \rho_\epsilon(t) := \int_{\mathbb{R}^d} n_\epsilon(t, x) dx \leq \rho_M \quad a.e. \quad (9.10)$$

and there is a subsequence such that

$$\rho_\epsilon(t) \xrightarrow{\epsilon \rightarrow 0} \bar{\rho}(t) \quad \text{in weak-} \star L^\infty(\mathbb{R}^+), \quad 0 \leq \bar{\rho}(t) \leq \rho_M \quad a.e. \quad (9.11)$$

Furthermore, we have weakly in the sense of measures for a subsequence n_ϵ

$$n_\epsilon(t, x) \xrightarrow{\epsilon \rightarrow 0} \bar{\rho}(t) \delta(x - \bar{x}(t)), \quad \frac{n_\epsilon(t, x)}{\int_{\mathbb{R}^d} n_\epsilon(t, x) dx} \xrightarrow{\epsilon \rightarrow 0} \delta(x - \bar{x}(t)), \quad (9.12)$$

and the pair $(\bar{x}(t), \bar{\rho}(t))$ also satisfies

$$\bar{\rho}(t) [r(\bar{x}(t)) - \bar{\rho}(t)C(\bar{x}(t), \bar{x}(t))] \geq 0. \quad (9.13)$$

With the assumptions of Theorem 9.1, we do not know if ρ_ϵ converges strongly because we do not have the equivalent of the *BV* quantity in Theorem 3.1. We can only prove it with stronger assumptions. This is stated in the

Theorem 9.2 (Form of canonical equation) *We assume (3.8)–(3.11) and (9.3)–(9.9). Then, for the function C^2 -function $u(t, x)$ given below in (9.24) with $D_x^3 u \in L_{\text{loc}}^\infty(\mathbb{R}^+; L^\infty(\mathbb{R}^d))$, $\bar{x} \in W^{1, \infty}(\mathbb{R}^+)$ satisfies*

$$\dot{\bar{x}}(t) = (-D^2 u(t, \bar{x}(t)))^{-1} \cdot [\nabla_x r(\bar{x}(t)) - \bar{\rho}(t) \nabla_x C(\bar{x}(t), \bar{x}(t))], \quad (9.14)$$

with initial data \bar{x}^0 given in (3.11). Furthermore, ρ_ϵ converges strongly and we have $\bar{\rho}(t) \in W^{1, \infty}(\mathbb{R}^+)$,

$$r(\bar{x}(t)) - \bar{\rho}(t)C(\bar{x}(t), \bar{x}(t)) = 0, \quad (9.15)$$

$$r(\bar{x}(t)) \geq r(\bar{x}^0)e^{-Kt}, \quad \bar{\rho}(t) \geq \rho^0 e^{-Kt}. \quad (9.16)$$

We may find some kind of gradient flow structure for the canonical equation when $C(x, y)$ is symmetric and obtain

Theorem 9.3 (Long time behavior) *We make the assumptions of Theorem 9.2, $C(x, y) = C(y, x)$ and*

$$x \mapsto \Phi(x) := \ln r(x) - \ln C(x, x) \quad \text{is strictly concave in the set } \{r > 0\}. \quad (9.17)$$

Then, as $t \rightarrow \infty$, $\bar{\rho}(t) \rightarrow \bar{\rho}_\infty > 0$, $\bar{x}(t) \rightarrow \bar{x}_\infty$ and \bar{x}_∞ is the maximum point of Φ .

9.1 A-priori bounds on ρ_ϵ

The main new difficulty with the competition model comes from a priori bounds on the total population. In particular it is not known if there are BV quantities proving that $\rho_\epsilon(t)$ converges strongly. Even non extinction is not longer automatic.

One side of the inequality (9.10) is given by $n_\epsilon \geq 0$, for the other side we integrate (9.1) over \mathbb{R}^d and use (9.3) to write

$$\begin{aligned} \frac{d}{dt} \int_{\mathbb{R}^d} n_\epsilon(t, x) dx &= \frac{1}{\epsilon} \int_{\mathbb{R}^d} n_\epsilon(t, x) r(x) dx - \frac{1}{\epsilon} \int_{\mathbb{R}^d} \int_{\mathbb{R}^d} n_\epsilon(t, x) C(x, y) n_\epsilon(t, y) dy dx \\ &\geq \frac{1}{\epsilon} \int_{\mathbb{R}^d} n_\epsilon(t, x) r(x) dx \left[1 - \frac{\int_{\mathbb{R}^d} n_\epsilon(t, x) dx}{\rho_M} \right], \end{aligned}$$

therefore (and even though r can change sign) we conclude thanks to (9.8)

$$\int_{\mathbb{R}^d} n_\epsilon(t, x) dx \leq \rho_M.$$

9.2 Passing to the limit

The proofs of the remaining parts of Theorems are close to those already written before. We only give the main differences here. They rely again on the WKB ansatz $u_\epsilon := \epsilon \ln(n_\epsilon)$. We obtain as before that u_ϵ satisfies the Hamilton-Jacobi equation

$$\begin{cases} \frac{\partial}{\partial t} u_\epsilon(t, x) = r(x) - \int_{\mathbb{R}^d} C(x, y) n_\epsilon(t, y) dy + |\nabla u_\epsilon|^2 + \epsilon \Delta u_\epsilon, & t > 0, x \in \mathbb{R}^d, \\ u_\epsilon(t = 0) = u_\epsilon^0. \end{cases} \quad (9.18)$$

Similarly to Lemma 5.1 we can prove the

Lemma 9.4 *With the assumptions of Theorem 9.1, we have for all $t \geq 0$*

$$\begin{aligned} -\underline{L}_0 - \underline{L}_1 |x|^2 - \epsilon 2d \underline{L}_1 t \leq u_\epsilon(t, x) \leq \overline{L}_0 - \overline{L}_1 |x|^2 + (\overline{K}'_0 + 2d\epsilon \overline{L}_1) t, \\ -2\underline{L}_1 \leq D^2 u_\epsilon(t, x) \leq -2\overline{L}_1. \end{aligned}$$

Proof. The first line holds because the right (resp. left) hand side of the inequality is a super (resp. sub) solution thanks to assumption (9.4) and using the control of n_ϵ by ρ_M . For the second line, the upper and lower bound use the maximum principle on the equation for $D^2 u_\epsilon$ and the compatibility conditions (9.9) as in section 5.2. \square

From the regularity obtained, it follows that we can extract a subsequence such that $u_\epsilon(t, x) \xrightarrow{\epsilon \rightarrow 0} u(t, x)$, locally uniformly as in section 5.3. We also obtain from Lemma 9.4

$$-\underline{L}_0 - \underline{L}_1 |x|^2 \leq u(t, x) \leq \overline{L}_0 - \overline{L}_1 |x|^2 + \overline{K}'_0 t, \quad -2\underline{L}_1 \leq D^2 u(t, x) \leq -2\overline{L}_1 \quad \text{a.e.} \quad (9.19)$$

and that u satisfies, in the viscosity sense (modified as in [4, 24, 3]), the equation

$$\begin{cases} \frac{\partial}{\partial t} u = r(x) - \bar{\rho}(t) C(x, \bar{x}(t)) + |\nabla u|^2, \\ \max_{\mathbb{R}^d} u(t, x) \leq 0. \end{cases} \quad (9.20)$$

The constraint is now relaxed to an inequality because we know that the total mass is bounded but we do not control the mass from below at this stage. In the framework of Theorem 9.2, we prove later on that the constraint is always an equality (see (9.24)).

It might be that $\bar{\rho}(t)$ vanishes and then $\bar{x}(t)$ does not matter here, nevertheless we still have

$$\max_{\mathbb{R}^d} u(t, x) = u(t, \bar{x}(t)). \quad (9.21)$$

Using the control (9.19) and this Hamilton-Jacobi equation we obtain (9.12) with the same arguments as in Section 5.3. The new difficulty is that $\rho(t)$ might vanish in particular when the constraint is strict $\max_{\mathbb{R}^d} u(t, x) < 0$, an option that we will discard later. Because of that, we also obtain the restriction on times in (9.13) which can be completed as (in the viscosity sense)

$$\frac{d}{dt}u(t, \bar{x}(t)) = r(\bar{x}(t)) - \bar{\rho}(t)C(\bar{x}(t), \bar{x}(t)). \quad (9.22)$$

We also have, as in section 9.1,

$$\epsilon \frac{d}{dt}\rho_\epsilon(t) = \int_{\mathbb{R}^d} n_\epsilon(t, x)r(x) dx - \int_{\mathbb{R}^d} \int_{\mathbb{R}^d} n_\epsilon(t, x)C(x, y)n_\epsilon(t, y) dy dx.$$

Passing to the weak limit (integration by parts and using boundedness of ρ_ϵ), we find that

$$\bar{\rho}(t)r(\bar{x}(t)) = \text{w-lim} \int_{\mathbb{R}^d} \int_{\mathbb{R}^d} n_\epsilon(t, x)C(x, y)n_\epsilon(t, y) dy dx \geq \bar{\rho}(t)^2 C(\bar{x}(t), \bar{x}(t)). \quad (9.23)$$

This proves (9.13) and concludes the proof of Theorem 9.1.

9.3 Form of the canonical equation

We continue with the proof of Theorem 9.2 and we begin with the derivation of (9.14).

The third derivative of u_ϵ is bounded using assumption (9.6) and following the same arguments in Section 6.1. Then similarly to Section 6.2, we have the regularity $D_x^3 u \in L^\infty((0, T) \times \mathbb{R}^d)$ for all $T > 0$, $\frac{\partial}{\partial t}u$ and $D_{txx}^3 u \in L_{\text{loc}}^\infty(\mathbb{R}^+ \times \mathbb{R}^d)$.

The canonical equation (9.14) is established a.e. as in section 6.2 using the maximum points of u_ϵ and passing to the limit. From (9.10), (9.14) and (9.19), we next obtain that $|\frac{d}{dt}\bar{x}(t)|$ is uniformly bounded.

9.4 Persistence

Now we prove that $u(t, \bar{x}(t)) = 0$ for all $t \geq 0$ and that $\bar{\rho}(t) > 0$ a.e. t . We cannot obtain this directly and thus we begin with proving $r(\bar{x}(t)) > 0$. We prove indeed the first part of the inequality (9.16).

We prove this by contradiction. We suppose that t_0 is the first point such that $r(\bar{x}(t_0)) = 0$. We notice that $\bar{x}(t)$ being lipschitzian and using assumption (9.7), for all $t < t_0$, we have $r(\bar{x}(t)) > 0$.

Therefore with assumption (9.4) we deduce that $\bar{x}(t)$ remains bounded for $t \in [0, t_0]$. Using (9.14) and (9.19) we have

$$\begin{aligned} \frac{d}{dt}r(\bar{x}(t)) &= \nabla_x r(\bar{x}(t)) \cdot \dot{\bar{x}}(t) \\ &= \nabla_x r(\bar{x}(t)) \cdot (-D^2u(t, \bar{x}(t)))^{-1} \cdot [\nabla_x r(\bar{x}(t)) - \bar{\rho}(t)\nabla_x C(\bar{x}(t), \bar{x}(t))] \\ &\geq -\bar{\rho}(t)|\nabla_x r(\bar{x}(t))||\nabla_x C(\bar{x}(t), \bar{x}(t))|. \end{aligned}$$

Consequently, using (9.13), we obtain

$$\frac{d}{dt}r(\bar{x}(t)) \geq -r(\bar{x}(t))|\nabla_x r(\bar{x}(t))| \frac{|\nabla_x C(\bar{x}(t), \bar{x}(t))|}{C(\bar{x}(t), \bar{x}(t))}.$$

Moreover we know that $\bar{x}(t)$ remains bounded for $t \in [0, t_0]$ and thus we have $\inf_{t \in [0, t_0]} C(\bar{x}(t), \bar{x}(t)) \geq \eta_2 > 0$.

We conclude that, for K a positive constant,

$$\frac{d}{dt}r(\bar{x}(t)) \geq -Kr(\bar{x}(t)), \quad \text{for } 0 \leq t \leq t_0.$$

Starting with $r(\bar{x}^0) > 0$ according to (9.7), this inequality is in contradiction with $r(\bar{x}(t_0)) = 0$. Therefore for all $t > 0$ we have $r(\bar{x}(t)) > 0$ and thus this inequality is true for all $t > 0$. Thereby we obtain the first part of (9.16). From the latter and using again (9.4), we also deduce that $\bar{x}(t)$ remains bounded for all $t > 0$.

Next we use (9.13), (9.22) and the positivity of $r(\bar{x}(t))$ to obtain

$$u(t, \bar{x}(t)) - u^0(\bar{x}^0) = \int r(\bar{x}(t)) - \bar{\rho}(t)C(\bar{x}(t), \bar{x}(t))dt \geq \mathbf{1}_{\bar{\rho}(t)=0}r(\bar{x}(t)) \geq 0.$$

We deduce, using (3.11), that $u(t, \bar{x}(t)) = 0$ for all $t \geq 0$. Thus the equation on u is in fact

$$\begin{cases} \frac{\partial}{\partial t}u = r(x) - \bar{\rho}(t)C(x, \bar{x}(t)) + |\nabla u|^2, \\ \max_{\mathbb{R}^d} u(t, x) = 0. \end{cases} \quad (9.24)$$

This identity also proves the identity (9.15) and thus that (9.23) holds as an equality, which is equivalent to say that the weak limit of $\rho_\epsilon(t)$ is in fact a strong limit.

We may now use (9.15) to conclude that $\bar{\rho}(t)$ is also bounded in $W^{1,\infty}(\mathbb{R}^+)$. To do so, we first differentiate (9.15) and find again some kind of gradient flow structure

$$\nabla r(\bar{x}(t)) \cdot \dot{\bar{x}}(t) - \dot{\bar{\rho}}(t)C(\bar{x}(t), \bar{x}(t)) - \bar{\rho}(t) [\nabla_x C(\bar{x}(t), \bar{x}(t)) + \nabla_y C(\bar{x}(t), \bar{x}(t))] \dot{\bar{x}}(t) = 0.$$

With (9.14), it follows that

$$\dot{\bar{x}}(t) \cdot (-D^2u) \cdot \dot{\bar{x}}(t) = \dot{\bar{\rho}}(t)C(\bar{x}(t), \bar{x}(t)) + \bar{\rho}(t)\nabla_y C(\bar{x}(t), \bar{x}(t))\dot{\bar{x}}(t). \quad (9.25)$$

From the uniform bounds proved before, there is a constant η_3 such that

$$\frac{\nabla_y C(\bar{x}(t), \bar{x}(t)) \cdot \dot{\bar{x}}(t)}{C(\bar{x}(t), \bar{x}(t))} \leq \eta_3. \quad (9.26)$$

Using the latter and (9.19) we conclude that, for K a positive constant,

$$\dot{\bar{\rho}}(t) \geq -K\bar{\rho}(t).$$

Thus we obtain (9.16). This completes the proof of Theorem 9.2.

9.5 Long time behavior

It remains to prove Theorem 9.3. Assuming that $C(x, y)$ is symmetric, we can find a quantity which is non-decreasing in time, which replaces the quantity \bar{I} in section 6.3. We compute, from the relation (9.25),

$$\begin{aligned} \frac{d}{dt} [\bar{\rho}^2(t)C(\bar{x}(t), \bar{x}(t))] (2\bar{\rho}(t))^{-1} &= \dot{\bar{\rho}}(t)C(\bar{x}(t), \bar{x}(t)) + \bar{\rho}(t)(\nabla_y C)\dot{\bar{x}}(t) \\ &= \dot{\bar{x}}(t) \cdot (-D^2u) \cdot \dot{\bar{x}}(t) \geq 0. \end{aligned} \quad (9.27)$$

As t tends to infinity, we may consider a subsequence t_n such that $\bar{\rho}(t_n) \rightarrow \bar{\rho}_\infty$, $\bar{x}(t_n) \rightarrow \bar{x}_\infty$. From (9.27), we may also assume $\dot{\bar{x}}(t_n) \rightarrow 0$. Therefore

$$\nabla r(\bar{x}_\infty) = \bar{\rho}_\infty \nabla_x C(\bar{x}_\infty, \bar{x}_\infty), \quad r(\bar{x}_\infty) = \bar{\rho}_\infty C(\bar{x}_\infty, \bar{x}_\infty).$$

From these relations, we first conclude that $\bar{\rho}_\infty$ is positive because r is concave and its gradient only vanishes at a point where r is positive.

Then we combine the relations and conclude that

$$\frac{\nabla r(\bar{x}_\infty)}{r(\bar{x}_\infty)} = \frac{\nabla_x C(\bar{x}_\infty, \bar{x}_\infty)}{C(\bar{x}_\infty, \bar{x}_\infty)}.$$

The assumption (9.17) then concludes on the uniqueness of such a point \bar{x}_∞ and thus on the convergence of $\bar{x}(t)$. \square

References

- [1] G. Barles. *Solutions de viscosité des équations de Hamilton-Jacobi*, volume 17 of *Mathématiques & Applications (Berlin) [Mathematics & Applications]*. Springer-Verlag, Paris, 1994.
- [2] G. Barles, L. C. Evans, and P. E. Souganidis. Wavefront propagation for reaction-diffusion systems of PDE. *Duke Math. J.*, 61(3):835–858, 1990.
- [3] G. Barles, S. Mirrahimi, and B. Perthame. Concentration in Lotka-Volterra parabolic or integral equations: a general convergence result. *Methods Appl. Anal.*, 16(3):321–340, 2009.
- [4] G. Barles and B. Perthame. Concentrations and constrained Hamilton-Jacobi equations arising in adaptive dynamics. *Contemp. Math.*, 439:57–68, 2007.
- [5] N. Champagnat, R. Ferrière, and G. Ben Arous. The canonical equation of adaptive dynamics: A mathematical view. *Selection*, 2:73–83, 2001.
- [6] N. Champagnat, R. Ferrière, and S. Méléard. Unifying evolutionary dynamics: From individual stochastic processes to macroscopic models. *Theoretical Population Biology*, 69(3):297–321, 2006.
- [7] N. Champagnat, R. Ferrière, and S. Méléard. *Individual-based probabilistic models of adaptive evolution and various scaling approximations*, volume 59 of *Progress in Probability*. Birkhäuser, 2008.

-
- [8] N. Champagnat and P.-E. Jabin. The evolutionary limit for models of populations interacting competitively with many resources. *Preprint*, 2010.
- [9] R. Cressman and J. Hofbauer. Measure dynamics on a one-dimensional continuous trait space: theoretical foundations for adaptive dynamics. *Theoretical Population Biology*, 67(1):47–59, 2005.
- [10] L. Desvillettes, P.-E. Jabin, S. Mischler, and G. Raoul. On mutation-selection dynamics. *Commun. Math. Sci.*, 6(3):729–747, 2008.
- [11] U. Dieckmann and R. Law. The dynamical theory of coevolution: A derivation from stochastic ecological processes. *J. Math. Biol.*, 34:579–612, 1996.
- [12] O. Diekmann. A beginner’s guide to adaptive dynamics. In *Mathematical modelling of population dynamics*, volume 63 of *Banach Center Publ.*, pages 47–86. Polish Acad. Sci., Warsaw, 2004.
- [13] O. Diekmann, P.-E. Jabin, S. Mischler, and B. Perthame. The dynamics of adaptation: an illuminating example and a Hamilton-Jacobi approach. *Th. Pop. Biol.*, 67(4):257–271, 2005.
- [14] L. C. Evans. *Partial differential equations*, volume 19 of *Graduate Studies in Mathematics*. American Mathematical Society, Providence, RI, 1998.
- [15] L. C. Evans and P. E. Souganidis. A PDE approach to geometric optics for certain semilinear parabolic equations. *Indiana Univ. Math. J.*, 38(1):141–172, 1989.
- [16] W. H. Fleming and P. E. Souganidis. PDE-viscosity solution approach to some problems of large deviations. *Ann. Scuola Norm. Sup. Pisa Cl. Sci.*, 4:171–192, 1986.
- [17] S. Genieys, V. Volpert, and P. Auger. Pattern and waves for a model in population dynamics with nonlocal consumption of resources. *Math. Model. Nat. Phenom.*, 1(1):63–80, 2006.
- [18] P.-E. Jabin and G. Raoul. Selection dynamics with competition. *J. Math. Biol.*, To appear.
- [19] P. L. Lions. *Generalized solutions of Hamilton-Jacobi equations*, volume 69 of *Research Notes in Mathematics*. Pitman Advanced Publishing Program, Boston, 1982.
- [20] P.-L. Lions. Regularizing effects for first-order Hamilton-Jacobi equations. *Applicable Analysis*, 20:283–307, 1985.
- [21] S. Méléard. Random modeling of adaptive dynamics and evolutionary branching. In J. F. Rodrigues and F. Chalub, editors, *The Mathematics of Darwin’s Legacy*, Mathematics and Biosciences in Interaction. Birkhäuser Basel, 2010.
- [22] G. Meszéna, M. Gyllenberg, F. J. Jacobs, and J. A. J. Metz. Link between population dynamics and dynamics of darwinian evolution. *Phys. Rev. Lett.*, 95(7):078105, Aug 2005.
- [23] S. Mirrahimi, B. Perthame, E. Bouin, and P. Millien. Population formulation of adaptative meso-evolution; theory and numerics. In J. F. Rodrigues and F. Chalub, editors, *The Mathematics of Darwin’s Legacy*, Mathematics and Biosciences in Interaction. Birkhäuser Basel, 2010.

-
- [24] B. Perthame and G. Barles. Dirac concentrations in Lotka-Volterra parabolic PDEs. *Indiana Univ. Math. J.*, 57(7):3275–3301, 2008.
- [25] B. Perthame and S. Génieys. Concentration in the nonlocal Fisher equation: the Hamilton-Jacobi limit. *Math. Model. Nat. Phenom.*, 2(4):135–151, 2007.
- [26] G. Raoul. *Etude qualitative et numérique d'équations aux dérivées partielles issues des sciences de la nature*. PhD thesis, ENS Cachan, 2009.
- [27] G. Raoul. Local stability of evolutionary attractors for continuous structured populations. *accepted in Monatsh. Math.*, 2010.