



**HAL**  
open science

## **-DGGE analysis of and in cecal samples of broilers without cultivation**

Hristo Najdenski, Marc Heyndrickx, Lieve Herman, Winy Messens

► **To cite this version:**

Hristo Najdenski, Marc Heyndrickx, Lieve Herman, Winy Messens. -DGGE analysis of and in cecal samples of broilers without cultivation. *Veterinary Microbiology*, 2007, 127 (1-2), pp.196. 10.1016/j.vetmic.2007.08.002 . hal-00532301

**HAL Id: hal-00532301**

**<https://hal.science/hal-00532301>**

Submitted on 4 Nov 2010

**HAL** is a multi-disciplinary open access archive for the deposit and dissemination of scientific research documents, whether they are published or not. The documents may come from teaching and research institutions in France or abroad, or from public or private research centers.

L'archive ouverte pluridisciplinaire **HAL**, est destinée au dépôt et à la diffusion de documents scientifiques de niveau recherche, publiés ou non, émanant des établissements d'enseignement et de recherche français ou étrangers, des laboratoires publics ou privés.

## Accepted Manuscript

Title: *Fla*-DGGE analysis of *Campylobacter jejuni* and *Campylobacter coli* in cecal samples of broilers without cultivation

Authors: Hristo Najdenski, Marc Heyndrickx, Lieve Herman, Winy Messens



PII: S0378-1135(07)00390-2  
DOI: doi:10.1016/j.vetmic.2007.08.002  
Reference: VETMIC 3781

To appear in: *VETMIC*

Received date: 12-4-2007  
Revised date: 7-8-2007  
Accepted date: 7-8-2007

Please cite this article as: Najdenski, H., Heyndrickx, M., Herman, L., Messens, W., *Fla*-DGGE analysis of *Campylobacter jejuni* and *Campylobacter coli* in cecal samples of broilers without cultivation, *Veterinary Microbiology* (2007), doi:10.1016/j.vetmic.2007.08.002

This is a PDF file of an unedited manuscript that has been accepted for publication. As a service to our customers we are providing this early version of the manuscript. The manuscript will undergo copyediting, typesetting, and review of the resulting proof before it is published in its final form. Please note that during the production process errors may be discovered which could affect the content, and all legal disclaimers that apply to the journal pertain.

1 ***fla*-DGGE analysis of *Campylobacter jejuni* and *Campylobacter coli***  
2 **in cecal samples of broilers without cultivation**

3

4 **Hristo Najdenski<sup>a,b</sup>, Marc Heyndrickx<sup>a</sup>, Lieve Herman<sup>a</sup>, Winy Messens<sup>a,\*</sup>**

5 <sup>a</sup>Institute for Agricultural and Fisheries Research (ILVO), Technology and Food Unit,  
6 Brusselssesteenweg 370, B-9090 Melle, Belgium

7 <sup>b</sup>Current address: The Stephan Angeloff Institute of Microbiology, Bulgarian Academy  
8 of Sciences, Acad. Georgi Bonchev Str. 26, 1113 Sofia, Bulgaria

9

10 \* Corresponding author at: Institute for Agricultural and Fisheries Research (ILVO),  
11 Technology and Food Unit, Brusselssesteenweg 370, B-9090 Melle, Belgium. Tel.: +32 9  
12 2723000; fax: +32 9 2723001. *E-mail address*: winy.messens@ilvo.vlaanderen.be (W.  
13 Messens).

14

15 **Abstract**

16 In a commercial broiler flock during rearing multiple genotypes of *Campylobacter jejuni*  
17 may be present as well as in gastrointestinal tracts of individual birds. The aim of this  
18 study was to optimize and apply a denaturing gradient gel electrophoresis assay of the  
19 flagellin gene (*fla*-DGGE) for analysis of *Campylobacter jejuni* and *Campylobacter coli*  
20 in cecal samples of broilers without prior cultivation. One *C. coli* and 21 *C. jejuni* strains  
21 isolated from broiler flocks, of which 14 typed as unique by restriction fragment length  
22 polymorphism of *flaA* and two undefined strains, were clustered into 9 groups when  
23 applying *fla*-DGGE. Spiking of cecal samples revealed that *fla*-DGGE is able to detect at

1 least 4.55-5.96 log CFU *Campylobacter* per ml of cecal material. The presence of 3  
2 strains spiked in cecal material was demonstrated by *fla*-DGGE as the corresponding  
3 bands were visible on the DGGE gel. Naturally contaminated cecal samples were shown  
4 to contain different types of *C. jejuni* and *C. coli*. *Fla*-DGGE has some potential as a  
5 cultivation-independent fast primary subtyping method for *C. jejuni* and *C. coli* in cecal  
6 samples of broilers.

7

8 Key words: *Campylobacter*; broiler flocks; DGGE; subtyping

9

## 10 **1. Introduction**

11

12 Campylobacters are the most commonly reported bacterial cause of acute gastroenteritis  
13 in the European Union. Handling and consumption of contaminated poultry meat have  
14 been identified as major sources of human campylobacteriosis (Wingstrand et al., 2006).  
15 In Belgium, the *Campylobacter* prevalence at broiler flock level was estimated at 67 and  
16 72% (Herman et al., 2003; Rasschaert et al., 2006). The intestines, especially the ceca are  
17 the primary sites of colonization for *Campylobacter* (Achen et al., 1998).

18 The epidemiology of campylobacteriosis has been investigated by several molecular  
19 typing methods (Bull et al., 2006). A new and fast method, allowing separation of DNA  
20 fragments of equal length but different sequences is DGGE (denaturing gradient gel  
21 electrophoresis). DGGE is usually employed to assess the structure of microbial  
22 communities in environmental samples without cultivation, but can also be used for  
23 subtyping of *Campylobacter jejuni* and *Campylobacter coli* (Hein et al., 2003).

1 The goal of this study was to apply *fla*-DGGE for analysis of *C. jejuni* and *C. coli*  
2 directly in cecal contents of broilers without relying on a cultivation step which may  
3 introduce bias towards the selection of certain types.

4

## 5 **2. Materials and Methods**

6

### 7 *2.1. Bacterial strains and growth conditions*

8 Twenty-one *C. jejuni* subsp. *jejuni* (*C. jejuni* further) strains and 1 *C. coli* strain,  
9 originating from commercial broiler flocks (Herman *et al.*, 2003), were selected based on  
10 unique clustering profiles using restriction fragment length polymorphism of *flaA* (*fla*-  
11 RFLP) (Table 1). Isolates were kept as frozen stock cultures at -80 °C and cultured on  
12 modified Charcoal Cefoperazone Desoxycholate Agar (mCCDA, Oxoid, Basingstoke,  
13 UK; Herman *et al.* (2003)) under microaerophilic conditions (5% O<sub>2</sub>, 10% CO<sub>2</sub>, 85% N<sub>2</sub>  
14 in an O<sub>2</sub>/CO<sub>2</sub> incubator, Thermo Forma, Ohio, USA) at 42 °C.

15 *Campylobacter lari* (LMG 8846, LMG 9152), *Campylobacter hyointestinalis* subsp.  
16 *hyointestinalis* (LMG 10891, R26768, R26766, LMG 7817), *Campylobacter*  
17 *insulaenigrae* (LMG 22718, LMG 22716), *Campylobacter concisus* (LMG 14003),  
18 *Campylobacter lanienae* (R23962), *Campylobacter “lawrenceae”* (R28144),  
19 *Campylobacter upsaliensis* (LMG 7915), *Helicobacter pullorum* (R26767, LMG 16318),  
20 *Arcobacter butzleri* (LMG 10828), *Arcobacter cryaerophilus* (LMG 9904), and  
21 *Arcobacter skirrowii* (LMG 6621) strains were used to check the specificity of the *fla*-  
22 DGGE method. Strains were cultured on Mueller Hinton agar (Oxoid) supplemented with

1 5% horse blood for 48 h under microaerophilic conditions generated with CampyGen  
2 (Oxoid). *Campylobacter* strains were cultured at 37 °C and *Arcobacter* strains at 28 °C.

3

#### 4 2.2. Sampling and microbiological analysis

5 Cecal contents were aseptically collected from chicken ceca of 4 individual broilers from  
6 a commercial slaughterhouse in Belgium. One g of each sample was dissolved in 9 ml of  
7 buffered peptone water (BPW, Oxoid). Enumeration was done by serial decimal dilution,  
8 plating out on mCCDA (Oxoid) and incubation for 24 h under microaerophilic conditions  
9 in an O<sub>2</sub>/CO<sub>2</sub> incubator at 42 °C (as above). Microscopy of colonies suspected for  
10 *Campylobacter* spp. was done. Each sample of cecal contents was stored at -80 °C after  
11 dilution with 30% glycerol (1:1 v/v) until DNA preparation. These samples are referred  
12 hereafter with the letter B and a number referring to the individual bird.

13

#### 14 2.3. Artificial contamination of cecal samples

15 The detection limit of *Campylobacter* in cecal samples by *fla*-DGGE was established by  
16 spiking a negative cecal sample with 10-fold dilutions of a 24 h culture of either *C. jejuni*  
17 KC 45.2 and *C. coli* KC 12 in a ratio of 25:1 (v/v). These samples are referred to by the  
18 letter D and a number referring to the dilution factor of the pure culture used for  
19 inoculation (e.g. 0 for undiluted, 1 for 10<sup>-1</sup> dilution, 2 for 10<sup>-2</sup> dilution etc.).

20 Spiking was also done with a bacterial mix of the strains used for construction of a  
21 DGGE-marker (see Results; KC 1, KC 45.2, and MB 1290). Ringer solutions containing  
22 each strain (ca. 6.85 log CFU/ml) were mixed at a volume ratio of 1:1:1 before spiking in

1 a ratio of 25:1 (v/v) giving bacterial numbers for each strain in the cecal sample between  
2 4.89 and 5.08 log CFU/ml.

3

#### 4 *2.4. Isolation of DNA from bacterial culture and cecal samples*

5 DNA from bacterial cultures was isolated by the method of Flamm et al. (1984) and its  
6 concentration was measured spectrophotometrically (Genesis 10vis, Thermo Electron  
7 Corporation, Madison, WI, USA). The method of Yu and Morrison (2004) including  
8 QIAamp DNA Stool Mini Kit (Qiagen, Hilden, Germany) was used for DNA isolation of  
9 cecal samples. Isolated DNA was detected by ethidium bromide staining after  
10 electrophoresis at 100 V for 30 min in a 2 % LSI LE agarose gel.

11

#### 12 *2.5. PCR assays and fla-DGGE analysis*

13 PCR was carried out with primers universal for *Campylobacter* spp. (Eurogentec,  
14 Seraing, Belgium) as well as primers specific for *C. jejuni* and *C. coli* (both from Isogen  
15 Life Science, Maarsse, The Netherlands) (Table 2) as described in Herman et al. (2003).  
16 PCR products were detected as described above.

17 For *fla*-DGGE, the primers were based on the study by Hein *et al.* (2003) applying *fla*-  
18 DGGE for subtyping of *C. jejuni* using previously published primers (Wegmüller et al.,  
19 1993). The primers (Eurogentec) originated from the 3' end of the *flaA* and the 3' end of  
20 the intergenic region, separating the tandemly orientated *flaA* and *flaB* genes. A GC  
21 clamp was attached to the 5' end of the forward primer (CF 03). The 25 µl reaction mix  
22 contained 10 mM Tris-HCl, 50 mM KCl, 0.25 mM of each dNTP (Amersham Pharmacia  
23 Biotech), 1 mM MgCl<sub>2</sub> (Perkin-Elmer Cetus, Norwalk, CT, USA), 6.25 pmol of each

1 primer, 1.6 U AmpliTaq Polymerase (Applied Biosystems) and 12.5 ng template DNA.  
2 The PCR programme was: 2 min at 94 °C (initial step), 28 cycles of 1 min at 94 °C, 1  
3 min at 56 °C, 1 min at 72 °C and a final extension of 7 min at 72 °C in a programmable  
4 thermocycler (GeneAmp® PCR System 9700 Gold; Applied Biosystems). PCR products  
5 were checked before *fla*-DGGE analysis as described above.

6 *Fla*-DGGE was carried out as described by Hein et al. (2003) with some modifications.  
7 Briefly, the gradient of the chemical denaturant was adjusted to 15-45%. Five µl PCR  
8 product was subjected to DGGE analysis using a DCode™ System (Bio-Rad  
9 Laboratories, Hercules, CA, USA) by using 8% polyacrylamide gel with a parallel  
10 chemical denaturing gradient. The running buffer was 1× Tris-acetate-EDTA (pH 8.0)  
11 and the operating conditions were 200 V at 56 °C for 3 h, applying 20 V for 15 min at the  
12 start of the DGGE analysis. DNA bands were visualized by 20 min staining in a 1:10,000  
13 SYBR Green I stain (Molecular Probes, Leiden, The Netherlands), photographed and  
14 analyzed using a GelDoc™ 2000 system (Bio-Rad Laboratories) and compared with  
15 Bionumerics 4.00 (Applied Maths, Sint-Martens-Latem, Belgium).

16

### 17 **3. Results**

18

#### 19 *3.1. Fla-DGGE analysis of isolated bacterial DNA*

20 To check the specificity of the *fla*-DGGE PCR, 12 *Campylobacter* strains other than *C.*  
21 *jejuni* and *C. coli*, 2 *H. pullorum* and 3 *Arcobacter* strains were tested. Samples were  
22 negative on both agarose and DGGE gel (data not shown). The 21 *C. jejuni* and 1 *C. coli*  
23 strains demonstrated positive *fla*-DGGE patterns (Table 1). PCR bands sized



1 approximately 200 bp with different intensity. The 14 strains with unique *fla*-RFLP types  
2 and 2 undefined strains were grouped into 9 *fla*-DGGE types. Five strains were analyzed  
3 in double and duplicates corresponded to the same *fla*-DGGE type. In 2 cases, strains  
4 (KC 83.2/KC 101 and KC1/KC131) from the same *fla*-RFLP type belonged to different  
5 *fla*-DGGE types. This experiment allowed us to construct a marker consisting of 3 strains  
6 (KC 1, KC 45.2, and MB 1290) each with a different banding profile (Fig. 1). This  
7 marker was added to 3 lanes of each DGGE gel for normalization.

### 9 3.2. Analysis of cecal samples

10 Table 3 gives the results of both microbiological and PCR analysis of cecal samples.  
11 *Campylobacter* were detected in the naturally contaminated samples at levels near 8 log  
12 CFU/ml (B1, B2 and B4) and 3 log CFU/ml (B3). All samples were positive with  
13 universal *Campylobacter* PCR. B1 and B2 were positive with *C. jejuni* PCR and *C. coli*  
14 PCR, while B4 was positive with *C. coli* PCR. After *fla*-DGGE PCR, B1, B2 and B4  
15 showed up on agarose gel at approximately 200 bp. B3 was negative with *C. jejuni* PCR,  
16 *C. coli* PCR and *fla*-DGGE PCR. *C. jejuni* KC 45.2 was spiked at a concentration of 6.96  
17 (D0) to 2.96 log CFU/ml cecal material (D4). On agarose gel, dilutions up to D3 were  
18 positive after universal *Campylobacter* PCR while only D0 was positive after *fla*-DGGE  
19 PCR. Using *C. coli* KC 12, *Campylobacter* counts ranged from 5.55 (D0) to 2.55 log  
20 CFU/ml cecal material (D3). Dilutions up to D2 were positive on agarose gel after  
21 universal *Campylobacter* PCR, while only D0 was positive after *fla*-DGGE PCR.  
22 The *fla*-DGGE patterns of cecal samples are depicted in Fig. 2. The cecal sample spiked  
23 with KC 45.2 gave a clear band for D0 and D1, at the same place as KC 45.2 analysed

1 from pure culture. D2 was negative on the DGGE gel. For KC 12, a clear band was  
2 noticeable for D0 while D1 still showed a slight band. The band corresponded to *fla*-  
3 DGGE type 3. Using a bacterial mix of the marker strains for spiking, the 3 strains could  
4 be distinguished on the DGGE gel at the corresponding places (data not shown). For the  
5 naturally contaminated samples B2 and B4, one band was found on DGGE gel  
6 corresponding to *fla*-DGGE type 3. For B1, 3 bands were observed, corresponding to *fla*-  
7 DGGE types 3, 5 and 6. B3 was negative (data not shown).

8

#### 9 **4. Discussion**

10

11 In this study, the *fla*-DGGE method described by Hein et al. (2003) was applied on cecal  
12 samples of broilers. The DNA extraction protocol that resulted in the highest DNA yield  
13 and quality as described by Yu and Morrison (2004) was used. This protocol gives DNA  
14 free of inhibitory substances and with improved DGGE profiles. According to Hein et al.  
15 (2003), the theoretical melting profiles for the *Campylobacter flaA* sequence types of the  
16 variable fragment showed several domains with different melting profiles when the GC  
17 clamp was attached to the forward primer, while a single domain was found with the GC  
18 clamp attached to the reverse primer. Nevertheless, in our study we found a better  
19 separation of the fragment with the GC clamp attached to the forward primer and with an  
20 adjusted gradient of chemical denaturant. The method was shown specific for *C. jejuni*  
21 and *C. coli* as no cross-reaction was found in accordance to Wegmüller et al. (1993). As  
22 shown before (Hein et al., 2003; Nielsen et al., 2000), *fla*-DGGE is less discriminative  
23 compared to *fla*-RFLP. In general, strains from one *fla*-DGGE type belonged to different

1 *fla*-RFLP types. In 2 cases, 2 strains from the same *fla*-RFLP type were grouped into 2  
2 *fla*-DGGE types. This can possibly be explained by the different region of the flagellin  
3 sequence that was used in both methods. While *fla*-RFLP covered the entire *flaA* region,  
4 *fla*-DGGE covered the 3' end of *flaA* and part of the intergenic sequence between *flaA*  
5 and *flaB*. The main interest in DGGE is however that typing without cultivation is  
6 possible, which might introduce bias towards the selection of certain types. This is  
7 important as the gastrointestinal tracts of individual birds during rearing may contain  
8 multiple genotypes of *C. jejuni* (Höök et al., 2005).

9 Weaker bands are present on the DGGE gel when analyzing pure strains (Fig. 1) (except  
10 for KC1 which is due to the already low position of the strong distinct band), while this  
11 was only the case for 2 naturally contaminated cecum samples (Fig. 2, lanes 8 and 9).  
12 According to our interpretation, the weaker bands are due to technical artifacts caused by  
13 the *fla*-PCR on pure samples, while these artifacts were not visible using commonly DNA  
14 from contaminated samples. As a consequence, the weaker bands in Fig. 2, lanes 8-9,  
15 may be caused by *Campylobacter* types present in low concentration in the samples.

16 *Fla*-DGGE was able to detect *C. jejuni* and *C. coli* in cecal contents of broilers with a  
17 detection limit of 4.55-5.96 log CFU of *Campylobacter* per ml of cecal material. As  
18 colonization levels of *Campylobacter* in ceca are high, especially posttransport, the *fla*-  
19 DGGE method has still some potential despite the observed detection limit. In the studies  
20 by Stern et al. (1995) and Whyte et al. (2001), levels averaged 6.04 and 6.61 log and 6.83  
21 and 7.32 log CFU per g cecal material before and after transport to the slaughterhouse,  
22 respectively. However, for detection purposes, analysis on agarose after universal

1 *Campylobacter* PCR needs to be preferred because of its higher sensitivity (3.55-3.96 log  
2 CFU per ml of cecal material).

3 The naturally contaminated samples were *Campylobacter* positive on the DGGE gel,  
4 except for the sample containing only 3 log CFU/ml cecal material. This was possibly  
5 due to the detection limit of *fla*-DGGE as analysis on agarose after universal  
6 *Campylobacter* PCR was positive. The other samples contained > 7.98 log CFU/ml cecal  
7 material. Birds from two samples were colonised with a strain belonging to *fla*-DGGE  
8 type 3. By *C. jejuni* PCR and *C. coli* PCR the presence of both species was however  
9 found in one of these sample. Probably, both strains have a similar DGGE pattern and  
10 totally coincide. Such a result is explicable taking into consideration the similarity  
11 between *C. jejuni* and *C. coli* in the *fla*-DGGE pattern and their classification in one and  
12 the same DGGE type in this study. In another study (Studer et al., 1998), using the same  
13 *flaA-flaB* intergenic region for RFLP and sequence typing, differentiation between *C.*  
14 *jejuni* and *C. coli* was also not possible. Also, it could be explained by the higher  
15 sensitivity of the *C. jejuni* or *C. coli* PCRs. In one sample, 3 bands were distinguished by  
16 *fla*-DGGE and thus the presence of at least 3 different *Campylobacter* strains naturally  
17 available in the sample could be demonstrated. Moreover, this result was confirmed  
18 examining an artificially contaminated cecal sample with a mix of 3 *Campylobacter*  
19 strains. It has to be taken into account that multiple strains in a cecal sample will  
20 sometimes be undetected by *fla*-DGGE either because of the detection limit or because  
21 bands overlap.

22 In conclusion, *fla*-DGGE has some potential as a cultivation-independent fast primary  
23 subtyping method for *C. jejuni* and *C. coli* in cecal samples of broilers. Before

1 cultivation, *fla*-DGGE can illustrate different types in a sample, which can then be  
2 searched for by other typing techniques after a more directed picking of colonies.

3

#### 4 **Acknowledgements**

5 We thank the Belgian Federal Science Policy Office (fellowship H. Najdenski) and  
6 Federal Public Service Health, Food Chain Safety and Environment (project R-04/002-  
7 CAMPY) for its support. P. Vanmol and J. Claeys are acknowledged for their excellent  
8 practical assistance.

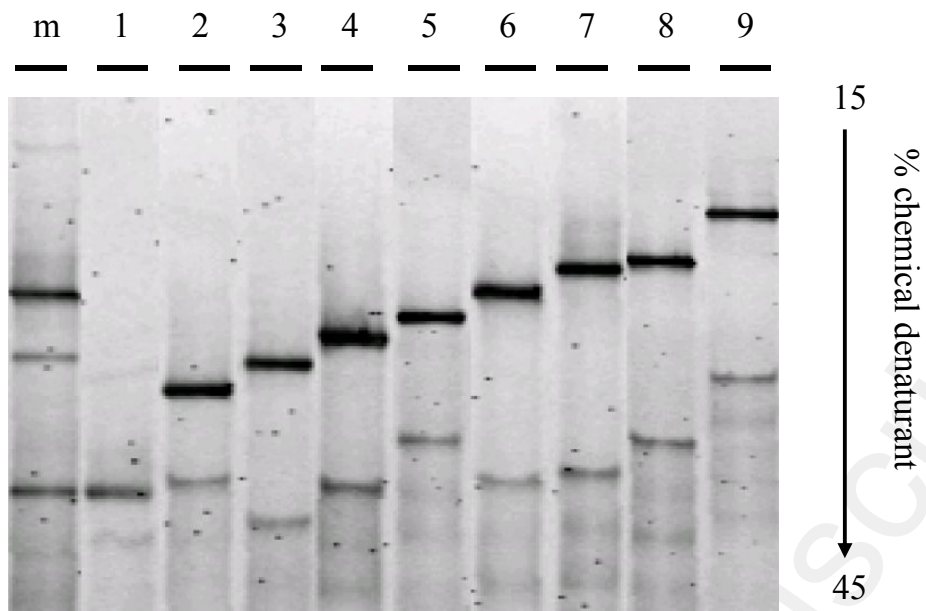
9

#### 10 **References**

- 11 Achen, M., Morishita, T.Y., Ley, E.C., 1998. Shedding and colonization of  
12 *Campylobacter jejuni* in broilers from day-of-hatch to slaughter age. Avian Dis. 42,  
13 732-737.
- 14 Bull, S.A., Allen, V.M., Domingue, G., Jørgensen, F., Frost, J.A., Ure, R., Whyte, R.,  
15 Tinker, D., Corry, J.E., Gillard-King, J., Humphrey, T.J., 2006. Sources of  
16 *Campylobacter* spp. colonizing housed broiler flocks during rearing. Appl. Environ.  
17 Microbiol. 72, 645-652.
- 18 Flamm, R.K., Hinrichs, D.J., Thomashow, M.F., 1984. Introduction of pAM beta 1 into  
19 *Listeria monocytogenes* by conjugation and homology between native *L.*  
20 *monocytogenes* plasmids. Infect. Immun. 44, 157-161.
- 21 Hein, I., Mach, R.L., Farnleitner, A.H., Wagner, M., 2003. Application of single-strand  
22 conformation polymorphism and denaturing gradient gel electrophoresis for *fla*  
23 sequence typing of *Campylobacter jejuni*. J. Microbiol. Methods 52, 305-313.

- 1 Herman, L., Heyndrickx, M., Grijspeerdt, K., Vandekerchove, D., Rollier, I., De Zutter,  
2 L., 2003. Routes for *Campylobacter* contamination of poultry meat: epidemiological  
3 study from hatchery to slaughterhouse. *Epidemiol. Infect.* 131, 1169-1180.
- 4 Höök, H., Fattah, M.A., Ericsson, H., Vågsholm, I., Danielsson-Tham, M.L., 2005.  
5 Genotype dynamics of *Campylobacter jejuni* in a broiler flock. *Vet. Microbiol.* 106,  
6 109-117.
- 7 Messens, W., Herman, L., Heyndrickx, M., in preparation. Multiple typing for the  
8 epidemiological study of contamination of broilers with *Campylobacter* in Belgium.
- 9 Nielsen, E.M., Engberg, J., Fussing, V., Petersen, L., Brogren, C.H., On, S.L., 2000.  
10 Evaluation of phenotypic and genotypic methods for subtyping *Campylobacter jejuni*  
11 isolates from humans, poultry, and cattle. *J. Clin. Microbiol.* 38, 3800-3810.
- 12 Rasschaert, G., Houf, K., Van Hende, J., De Zutter, L., 2006. *Campylobacter*  
13 contamination during poultry slaughter in Belgium. *J. Food Prot.* 69, 27-33.
- 14 Stern, N.J., Clavero, M.R., Bailey, J.S., Cox, N.A., Robach, M.C., 1995. *Campylobacter*  
15 spp. in broilers on the farm and after transport. *Poult. Sci.* 74, 937-941.
- 16 Studer, E., Domke, M., Wegmüller, B., Lüthy, J., Schmid, S., Candrian, U., 1998. RFLP  
17 and sequence analysis of *Campylobacter jejuni* and *Campylobacter coli* PCR  
18 products amplified directly from environmental samples. *Lebensm.-Wiss. u. Technol.*  
19 31, 537-545.
- 20 Wegmüller, B., Lüthy, J., Candrian, U., 1993. Direct polymerase chain reaction detection  
21 of *Campylobacter jejuni* and *Campylobacter coli* in raw milk and dairy products.  
22 *Appl. Environ. Microbiol.* 59, 2161-2165.

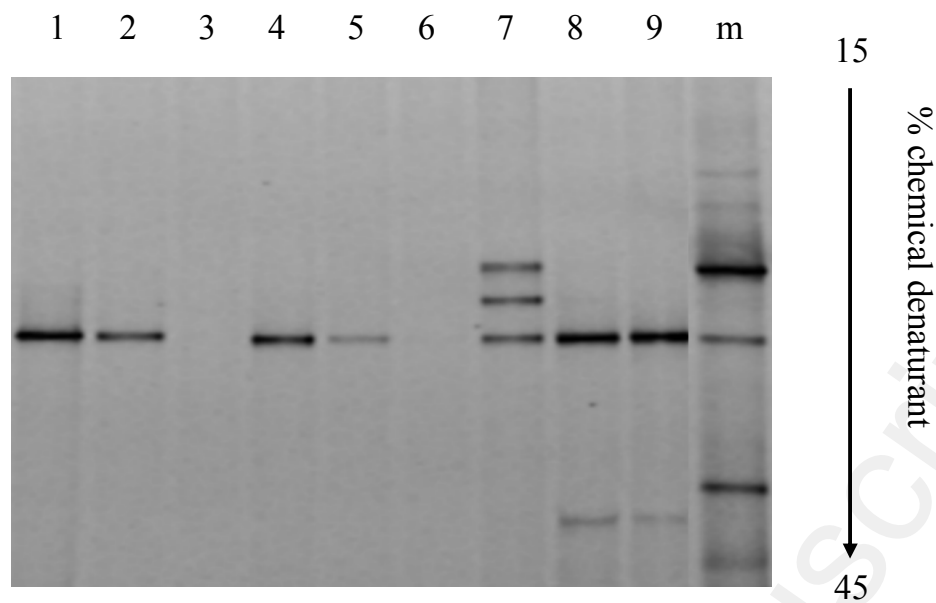
- 1 Whyte, P., Collins, J.D., McGill, K., Monahan, C., O'Mahony, H., 2001. The effect of  
2 transportation stress on excretion rates of *Campylobacters* in market-age broilers.  
3 Poul. Sci. 80, 817-820.
- 4 Wingstrand, A., Neimann, J., Engberg, J., Nielsen, E.M., Gerner-Smidt, P., Wegener,  
5 H.C., Molbak, K., 2006. Fresh chicken as main risk factor for campylobacteriosis,  
6 Denmark. Emerg Infect Dis 12, 280-285.
- 7 Yu, Z., Morrison, M., 2004. Improved extraction of PCR-quality community DNA from  
8 digesta and fecal samples. Biotechniques 36, 808-812.



1

2 Fig. 1. *Fla*-DGGE types. Lane m, separation pattern of an equimolar amplicon mixture from  
3 MB 1290, KC 45.2 and KC 1 (types 6, 3 and 1). The *fla*-DGGE band types 1 to 9 were  
4 produced from strains KC 1, KC 64.1, KC 12, KC 59.1, KC 101, KC 22, KC 67.2, KC 131,  
5 KC 126.1, respectively.





1  
 2 Fig. 2. *Fla*-DGGE analysis of artificially (D0, D1, D2) and naturally (B1, B2, B4)  
 3 contaminated caecal samples. Lanes 1 to 3, KC 45.2 D0 to D2; lanes 4 to 6, KC 12 D0 to D2;  
 4 lane 7, B1; lane 8, B2; lane 9, B4; m, separation pattern of an equimolar amplicon mixture  
 5 from MB 1290, KC 45.2 and KC 1 (types 6, 3 and 1).

1 **Table 1.** Characteristics of *Campylobacter* strains used and their resulting *fla*-DGGE types.

Strain number(flock) <sup>a</sup>	Source	Identi- fication <sup>b</sup>	<i>fla</i> - RFLP <i>DdeI</i> <sup>c</sup>	<i>fla</i> - RFLP <i>HinfI</i> <sup>c</sup>	<i>fla</i> -DGGE type
KC 1(2) <sup>M</sup>	cecal drops	J	9	9	1
KC 64.1(9 <sup>d</sup> ), KC 84.1(11)	cecal drops	J	12	7	2
KC 12(2)	cecal drops	C	1	1	3
KC 41(5), KC 111(13)	faecal material wild animals, cecal drops	J	3	3	3
KC 45.2(7) <sup>M</sup>	cecal drops	J	5	5	3
KC 44(7)	dung hill	J	14	5	4
KC 51(7)	faecal material other poultry house	J	6	6	4
KC 83.2(11)	cecal drops	J	11	7	4
KC 59.1(9), KC 96.1(12)	cecal drops	J	7	7	4
KC 40(6)	dung hill	J	4	4	5
KC 101(11)	farmers footwear <sup>e</sup>	J	11	7	5
KC 22(3), KC 61(10 <sup>d</sup> )	cecal drops	J	2	2	6
KC 69.1(11)	cecal drops	J	1	7	6
KC 71(11)	farmers footwear <sup>e</sup>	J	10	7	6
MB1290 (= LMG 9880) <sup>M</sup>	chicken	J	NA	NA	6
KC 67.2(9)	cecal drops	J	8	8	7
KC 131(18)	ditch water	J	9	9	8
KC 126.1(16)	cecal drops	J	NA	NA	9

2 NA: not assessed.

3 <sup>a</sup> KC strains were obtained from samples taken from commercial broiler flocks as  
4 described in Herman et al. (2003); LMG strain is from Laboratory of Microbiology (Ghent,  
5 Belgium); M indicates marker strains.6 <sup>b</sup> C, *C. coli*; J, *C. jejuni*.7 <sup>c</sup> *Fla*-RFLP typing is described in Messens et al. (in preparation)

1 **Table 2.** Set of primers used for PCR assays.

Name	Oligonucleotide	Sequences (5'-3') <sup>a</sup>	Reference
Universal	C412	GGA TGA CAC TTT TCG GAG C	Brown et
<i>Campylobacter</i>	C1288	CAT TGT AGC ACG TGT GTC	al. (2004)
PCR			
<i>C. jejuni</i> PCR	JEJ3.3	GAA GAG GGT TTG GGT GGT G	Linton et
	JEJ4.4	AGC TAG CTT CGC ATA ATA ACT TG	al. (1997)
<i>C. coli</i> PCR	COL3.3	GGT ATG ATT TCT ACA AAG CGA G	Linton et
	COL4.4	ATA AAA GAC TAT CGT CGC GTG	al. (1997)
<i>Fla</i> -DGGE	CF 02	AAGCAAGAAGTGTTCCAAGTTT	Wegmüller
PCR	CF 03	CGC CCG CCG CGC GCG GCG GGC GGG GCG GGG GCA CGG GGG GCT CAA AGT GGT TCT TAT GCN ATG G	et al. (1993)

2

1 **Table 3.** PCR analysis of naturally and artificially contaminated cecal samples.

Isolate	Dilution	Counts (log CFU/ml)	Universal <i>Campylobacter</i> PCR <sup>a</sup>	<i>C.</i> <i>jejuni</i> PCR <sup>a</sup>	<i>C. coli</i> PCR <sup>a</sup>	<i>Fla-</i> DGGE PCR <sup>a</sup>	<i>Fla-</i> DGGE PCR on DGGE gel
B1		8.28	+	+	+	+	+
B2		≥ 8.30	+	+	+	+	+
B3		3.00	+	-	-	-	-
B4		7.98	+	-	+	+	+
KC 45.2	D0	6.96	+	NA	NA	+	+
KC 45.2	D1	5.96	+	NA	NA	-	+
KC 45.2	D2	4.96	+	NA	NA	-	-
KC 45.2	D3	3.96	+	NA	NA	-	-
KC 45.2	D4	2.96	-	NA	NA	-	-
KC 12	D0	5.55	+	NA	NA	+	+
KC 12	D1	4.55	+	NA	NA	-	+
KC 12	D2	3.55	+	NA	NA	-	-
KC 12	D3	2.55	-	NA	NA	-	-

2 NA: not assessed.

3 <sup>a</sup> on agarose gel