



HAL
open science

Long-term resveratrol administration reduces metabolic disturbances and lowers blood pressure in obese Zucker rats

Leonor Rivera, Rocío Morón, Antonio Zarzuelo, Milagros Galisteo

► **To cite this version:**

Leonor Rivera, Rocío Morón, Antonio Zarzuelo, Milagros Galisteo. Long-term resveratrol administration reduces metabolic disturbances and lowers blood pressure in obese Zucker rats. *Biochemical Pharmacology*, 2009, 77 (6), pp.1053. <10.1016/j.bcp.2008.11.027>. <hal-00531849>

HAL Id: hal-00531849

<https://hal.science/hal-00531849v1>

Submitted on 4 Nov 2010

HAL is a multi-disciplinary open access archive for the deposit and dissemination of scientific research documents, whether they are published or not. The documents may come from teaching and research institutions in France or abroad, or from public or private research centers.

L'archive ouverte pluridisciplinaire **HAL**, est destinée au dépôt et à la diffusion de documents scientifiques de niveau recherche, publiés ou non, émanant des établissements d'enseignement et de recherche français ou étrangers, des laboratoires publics ou privés.



HAL Authorization

Accepted Manuscript

Title: Long-term resveratrol administration reduces metabolic disturbances and lowers blood pressure in obese Zucker rats

Authors: Leonor Rivera, Rocío Morón, Antonio Zarzuelo, Milagros Galisteo



PII: S0006-2952(08)00860-5
DOI: doi:10.1016/j.bcp.2008.11.027
Reference: BCP 10029

To appear in: *BCP*

Received date: 6-10-2008
Revised date: 25-11-2008
Accepted date: 25-11-2008

Please cite this article as: Rivera L, Morón R, Zarzuelo A, Galisteo M, Long-term resveratrol administration reduces metabolic disturbances and lowers blood pressure in obese Zucker rats, *Biochemical Pharmacology* (2008), doi:10.1016/j.bcp.2008.11.027

This is a PDF file of an unedited manuscript that has been accepted for publication. As a service to our customers we are providing this early version of the manuscript. The manuscript will undergo copyediting, typesetting, and review of the resulting proof before it is published in its final form. Please note that during the production process errors may be discovered which could affect the content, and all legal disclaimers that apply to the journal pertain.

1
2
3
4
5
6
7 **Long-term resveratrol administration reduces metabolic disturbances and lowers blood**
8 **pressure in obese Zucker rats.**

9
10
11
12 Leonor Rivera, Rocío Morón, Antonio Zarzuelo, and Milagros Galisteo¹.

13
14 Department of Pharmacology, CIBER-EHD, CTS-164 Research Group, School of Pharmacy,
15 University of Granada, Spain.

16
17 ¹Corresponding author: Milagros Galisteo. Department of Pharmacology, School of Pharmacy,
18 University of Granada, Campus Universitario Cartuja s/n, 18071 Granada (Spain).

19
20
21 Tel: +34 958243889

22
23 Fax: +34 958248964

24
25
26 E-mail address: mgalist@ugr.es

27
28
29
30
31 Running title: **Influence of resveratrol on the metabolic syndrome**

32
33
34
35
36 Abbreviations used: ACC, acetyl-CoA carboxylase; AMPK, 5'-AMP-activated protein
37 kinase; eNOS, endothelial nitric oxide synthase; FFA, free fatty acids; LC, lean control rats
38 group; LR, lean rats treated with resveratrol group; NO, nitric oxide; NO_x, nitrates plus
39 nitrites; OC, obese control rats group; OR, obese rats treated with resveratrol group; p-ACC,
40 phospho-ACC; p-AMPK, phospho-AMPK (Thr172); SBP, systolic blood pressure; TNF-
41
42
43
44
45
46
47
48
49 α , tumor necrosis factor- α .

ABSTRACT

1
2
3
4
5
6
7
8
9
10
11
12
13
14
15
16
17
18
19
20
21
22
23
24
25
26
27
28
29
30
31
32
33
34
35
36
37
38
39
40
41
42
43
44
45
46
47
48
49
50
51
52
53
54
55
56
57
58
59
60
61
62
63
64
65

Resveratrol is a natural polyphenolic stilbene derivative found in several human diet components that possess important and wide-ranging effects in biological systems including anticancer, anti-inflammatory, antioxidant, cardio-protective, and anti-ageing actions and beneficial properties against metabolic diseases. This study addresses the effects of long-term administration of resveratrol on several functional alterations arising from the metabolic syndrome experimental model of obese Zucker rats, and the possible mechanisms involved. The high plasma concentrations of triglycerides, total cholesterol, free fatty acids, insulin and leptin found in obese Zucker rats were reduced in obese rats that received resveratrol. Furthermore, the elevated hepatic lipid content was significantly lower in obese rats treated with resveratrol, an effect which was related to the increased phosphorylation of 5'-AMP-activated protein kinase (AMPK) and acetyl-CoA carboxylase (ACC) in the liver of these animals. Resveratrol treatment also improved the inflammatory status peculiar to this model, as it increased the concentration of adiponectin and lowered tumor necrosis factor- α production in the visceral adipose tissue (VAT) of obese Zucker rats. Moreover, chronic intake of resveratrol enhanced VAT eNOS expression among obese Zucker rats. These effects parallel the activation of AMPK and inhibition by phosphorylation of ACC in this tissue. The raised systolic blood pressure and reduced aortic eNOS expression found in obese Zucker rats were significantly improved in the resveratrol-treated obese rats. In conclusion, resveratrol improved dyslipidemia, hyperinsulinemia, hyperleptinemia and hypertension in obese Zucker rats, and produced anti-inflammatory effects in VAT, effects that seem to be mediated by AMPK activation.

Keywords: Metabolic syndrome; obese Zucker rats; resveratrol; inflammatory status; AMPK activation.

1. INTRODUCTION

1
2
3
4
5 Type 2 diabetes and obesity are pathologies with a high prevalence in Western societies.
6
7 Metabolic syndrome is a constellation of several specific abnormalities including abdominal
8
9 obesity, insulin resistance, dyslipidemia and hypertension [1]. It is directly associated with an
10
11 increased risk of developing cardiovascular diseases [2, 3], which are the major causes of
12
13 premature mortality in type 2 diabetes patients. In fact, metabolic syndrome is a greater
14
15 detriment than cancer to our society's overall health. In order to address this problem, there
16
17 has been increasing effort to find solutions that prevent and reverse metabolic syndrome.
18
19 Managing the disorders clustered in this syndrome is of great relevance to prevent and to
20
21 reduce the risk of all of these pathologies. Furthermore, obesity and insulin resistance have
22
23 recently been linked to a low-grade chronic inflammatory response characterized by increased
24
25 macrophage infiltration, altered cytokine production, and activation of the inflammatory
26
27 signalling pathway in adipose tissue. Thus, pharmacological agents and natural products able
28
29 to reduce inflammatory activity possess anti-diabetic properties.
30
31
32
33
34
35

36 The AMP-activated protein kinase (AMPK) system acts a sensor of cellular energy charge
37
38 which is activated by AMP but also by phosphorylation by one or more upstream kinases at a
39
40 threonine residue [4-6]. When it is activated, AMPK phosphorylates and inhibits acetyl CoA
41
42 carboxylase (ACC), leading to an increase in fatty acid oxidation and inhibiting fatty acid
43
44 synthesis [7]. AMPK is activated by a number of pathological stresses, including hypoxia,
45
46 oxidative stress, glucose deprivation, as well as exercise and dietary hormones, such as leptin
47
48 and adiponectin [5,8,9]. Lately, strategies targeting AMPK activation have received
49
50 increasing interest regarding the prevention and treatment of type 2 diabetes and other
51
52 disorders associated with metabolic syndrome [10].
53
54
55
56
57

58 Various natural molecules found in the human diet have been described as potential
59
60
61
62
63
64
65

agents to treat diabetes and hyperlipidemia [11-14]. Furthermore, recent studies have shown that some of these compounds strongly stimulate hepatic AMPK [11-13], an action that may help to explain some of the antihyperlipidemic effects of these natural derivatives and that provides an avenue for ameliorating hyperlipidemia and accelerated atherosclerosis in diabetes [11].

Resveratrol (trans-3,4',5-trihydroxystilbene) (**Fig. 1**) is a natural polyphenolic compound synthesized in a large number of plant species including some components of the human diet, such as mulberries, peanuts, grapes, and red wines. It is responsible for the beneficial effect of regular wine consumption in moderate amounts [15]. The positive effects of resveratrol in biological systems are wide-ranging. It acts as a cancer chemoprevention agent [16], a powerful anti-inflammatory factor and an antioxidant agent [17, 18]. Its cardiovascular properties, including inhibition of platelet aggregation and promotion of vasodilation by enhancing the production of NO [19] have also been described [15, 20] and recent studies have reported its beneficial effects against ageing and metabolic diseases [21-24]. Resveratrol has been described as a potent activator of AMPK in several tissues and cell lines, i.e, HepG2 [24], C2C12 myotubes [25] neuronal cell lines and neurons [26].

The main aim of the present study was to examine the effects of the chronic daily administration of resveratrol on the disturbances present in metabolic syndrome, and to analyze the mechanisms involved in its effects. The dose of resveratrol used is equivalent to that used by humans as a diet supplement. For this purpose, we used the obese Zucker rat, a widely used animal model of obesity and type 2 diabetes that presents many of the human metabolic syndrome features. These animals display insulin resistance, dyslipidemia, hyperinsulinemia [2, 27] and, in some colonies, hypertension that develops by 4-5 months of age [28]. On the contrary, their lean littermates are insulin-sensitive, normoinsulinemic, normotensive, and present a normal lipid profile and glucose tolerance. Furthermore, this

1 model presents a loss of function mutation in the leptin receptor [29, 30]. Because some of the
2 metabolic changes caused by resveratrol mimic those observed in response to AMPK
3 activation, we hypothesized that AMPK activation might be an important mediator of
4 resveratrol actions in this model.
5
6
7
8
9

10 11 12 **2. MATERIALS AND METHODS**

13
14
15
16
17 This study was carried out in accordance with the European Union guidelines for
18 animal care and protection.
19
20
21
22
23

24 *2.1. Reagents*

25
26 *Trans*-resveratrol and all chemicals were obtained from Sigma Chemicals (Madrid,
27 Spain).
28
29
30
31
32
33

34 *2.2. Animals and experimental protocol*

35
36 14 obese male Zucker rats and 14 lean heterozygous littermates at the age of 13 weeks
37 (Charles River Laboratories, Barcelona, Spain) were housed two or three per cage at a
38 constant temperature ($24 \pm 1^\circ \text{C}$), with a 12-h dark/light cycle and free access to tap water and
39 food. Rats were allowed to adapt to these conditions for two weeks, before the beginning of
40 the experimental protocol.
41
42
43
44
45
46
47

48 Obese and lean rats were randomly assigned to two groups of 7 animals. One of them
49 received a daily dose of resveratrol (10 mg/kg of body weight) ($n = 7$), mixed in the vehicle (1
50 ml water), while the other one received just the vehicle ($n = 7$). The rats were treated orally by
51 gavage for eight weeks. Henceforth, the obese and lean groups given resveratrol are referred
52 to as OR and LR, respectively, and the groups given the vehicle (control groups) are
53
54
55
56
57
58
59
60
61
62
63
64
65

1 designated as OC and LC. Administration of resveratrol was stopped two days before the end
2 of the experiments, in order to study its long-term consequences without the involvement of
3
4 its acute administration effects. Over the experimental period, the rats had free access to tap
5
6 water and diet, and food and water intake was measured daily.
7
8
9

10 11 12 *2.3. Blood pressure measurements*

13
14 Systolic blood pressure (SBP) was determined weekly, in the morning, in conscious,
15
16 pre-warmed, restrained rats by tail-cuff plethysmography (digital pressure meter, LE 5000,
17
18 Letica S.A., Barcelona, Spain). At least seven determinations were made in every session and
19
20 the mean of the lowest three values within 5 mm Hg was taken as the SBP value.
21
22
23

24 25 26 *2.4. Samples collection and storage*

27
28 At the end of the experimental period, rats were fasted overnight, blood was obtained
29
30 from the tail vein to analyze biochemical parameters, and animals were sacrificed. The
31
32 epididymal and retroperitoneal adipose tissue (visceral adipose tissue) (VAT) were removed
33
34 and weighed for evaluation of abdominal fat content. The liver was also removed and
35
36 weighed for evaluation of abdominal fat content. The liver was also removed and
37
38 weighed, as well as abdominal aorta. All tissue samples were frozen until analysis. Plasma
39
40 was obtained by blood centrifugation at $2000 \times g$ for 15 min, aliquoted and frozen.
41
42
43
44
45

46 47 *2.5. Plasma analytical procedures*

48
49 Plasma glucose, triglycerides, and total cholesterol concentrations were measured by
50
51 colorimetric methods using Spinreact kits (Spinreact, S.A., Girona, Spain). Plasma free fatty
52
53 acids (FFA) concentration was determined using a Wako NEFA C test kit (Wako Chemicals,
54
55 Richmond, VA). Plasma insulin concentration was quantified using a rat insulin enzyme
56
57 immunoassay kit (Spibio, Montigny le Bretonneux, France). Homeostatic model assessment
58
59
60
61
62
63
64
65

1 of insulin resistance (HOMA-IR) was calculated from fasting glucose and insulin levels as a
2 measure of insulin resistance [31]. Plasma leptin concentration was determined using a rat
3 leptin EIA kit (Assay Designs, Inc., Ann Arbor, MI, USA).
4
5
6
7
8

9 2.6. Measurement of lipid content in the liver

10 Total lipids were extracted according to the Bligh and Dyer method [32]. Briefly, 1.25
11 g of tissues were homogenized with 3.75 ml of chloroform-methanol (1:2 by volume) using a
12 Heidolph polytron. The homogenates were vigorously vortexed for 15 min, mixed with 1.25
13 ml of chloroform and then with 1.25 ml of water, and centrifuged briefly at 3,000 rpm to
14 separate the phases. Next, the lower phase was transferred to another tube, and the residue
15 was mixed with 1.88 ml of chloroform for the second-step vortex and centrifugation, and the
16 lower phase obtained by the centrifugation was mixed with the first chloroform phase in the
17 same tube. After evaporation with nitrogen gas at 55°C, the lipid extract was dissolved in 2 ml
18 of 2-propanol. Triglycerides and total cholesterol were assayed by the enzymatic quantitative
19 method described in plasma analytical procedures.
20
21
22
23
24
25
26
27
28
29
30
31
32
33
34
35
36
37
38

39 2.7. Adiponectin, nitrates plus nitrites and tumor necrosis factor- α (TNF- α) production by 40 adipose tissue

41 Visceral adipose tissue obtained from each rat was homogenized in phosphate buffer
42 saline. Homogenates were incubated at 37 °C for 20 min, and centrifuged at 15000 g for 15
43 min. Adiponectin concentration in VAT was also measured using a mouse/rat adiponectin
44 ELISA kit (B-Bridge International, Inc., Mountain View, CA, US). Nitrate plus nitrite levels
45 in plasma, as markers for the activity of NO synthase and NO biosynthesis, were determined
46 by means of an assay based on the determination of nitrite, using the Griess reaction. Nitrate
47 was measured as nitrite after enzymatic conversion by nitrate reductase as previously
48
49
50
51
52
53
54
55
56
57
58
59
60
61
62
63
64
65

described [33]. The levels of TNF- α in the tissue supernatants were determined using an ELISA kit (Diaclone, Inc., Besançon, France) specific for rat TNF- α .

2.8. *eNOS expression by western blot in aorta and visceral adipose tissue*

The eNOS Western blots from VAT and aorta were performed as described elsewhere [14]. 50 μ g of protein of VAT and 40 μ g of protein of aortic homogenates from each sample were separated by SDS-polyacrylamide (8 %) gel electrophoresis in a mini-gel system (Bio-Rad Laboratories, S.A., Madrid, Spain), and then transferred electrophoretically onto nitrocellulose membranes overnight. Relative amounts of proteins were ascertained by staining membranes with Ponceau S. After blocking the filters in 5 % non-fat dry milk-Tris-buffered saline-0.1 % Tween 20 (TBST), they were incubated with a mouse anti-eNOS monoclonal antibody (BD Transduction Laboratories, San Jose, CA, US), diluted at 1:2500 in 5 % albumin-TBST. The filters were then washed five times for 10 min in TBST and incubated respectively with secondary peroxidase conjugated goat anti-mouse antibody (Santa Cruz Biotechnology, Santa Cruz, US) diluted at 1:2000 in 5 % non-fat dry milk-TBST. All incubations were performed at room temperature for 2 hours. After washing membranes, antibody binding was detected by an ECL system (PerkinElmer, LAS, Boston, USA). Films were scanned and densitometric analysis was performed on the scanned images using Scion Image-Release Beta 4.02 software (<http://www.scioncorp.com>).

2.9. *AMPK and ACC activity in liver and visceral adipose tissue*

VAT samples obtained from each rat were homogenated in modified RIPA buffer (50 mmol/L Tris-HCl, pH 7.4, 1% Triton X-100, 0.2% sodium deoxycholate, 0.2% sodium dodecylsulfate (SDS), 1 mmol/L sodium ethylenediaminetetraacetate, 1 mmol/L phenylmethylsulfonyl fluoride, 5 μ g/ml of aprotinin, 5 μ g/ml of leupeptin). Liver samples

1 were homogenated in buffer (20 mmol/l Tris-HCl, pH 8.0, 1% [vol/vol] Nonidet P-40,
2 1mmol/l EDTA, 1 mmol/l EGTA, 1 mmol/l sodium orthovanadate, 1 mmol/l dithiothreitol, 1
3 mmol/l phenylmethylsulfonyl fluoride, 2 µg/ml aprotinin, 2 µg/ml leupeptin, and 1 µg/ml
4 pepstatin). Homogenates were centrifuged at 14,000 rpm for 10 min at 4°C. Protein
5 concentrations in homogenates were measured by the bicinchoninic acid protein assay. 30 µg
6 of each sample were subjected to 10% SDS-PAGE and electrophoretically transferred to
7 polyvinylidene difluoride membranes by wet transfer at 90 V for 2h. The membranes were
8 blocked with 5% (wt/vol) non-fat dry milk in TBST for 2h at room temperature and
9 subsequently blotted with the appropriate antibodies in 5% (wt/vol) non-fat dry milk-TBST.
10 The antibodies anti-AMPK, anti-phospho-AMPK (Thr172) (anti-p-AMPK), anti-ACC, and
11 anti-phospho-ACC (anti-p-ACC) were purchased from Cell Signaling Technology, Inc.
12 (Danvers, MA, US) and were used at manufacturer-recommended dilutions (1:1000).
13 Incubations with primary antibodies were performed overnight at 4 °C. Following incubation,
14 membranes were washed three times with TBST for 10 min each, before incubation for 2 h at
15 room temperature with secondary peroxidase conjugated goat anti-rabbit antibody (Santa
16 Cruz Biotechnology, Santa Cruz, US) diluted at 1:2000 in 5 % non-fat dry milk-TBST.
17 Membranes were then washed five times with TBST for 10 min each, and the bound
18 antibodies were visualized by an ECL system (PerkinElmer, LAS, Boston, USA).
19 Phosphorylated AMPK and ACC were quantified by densitometric analysis as described
20 above, and normalized to the levels of endogenous AMPK and ACC protein respectively.
21 Phosphorylation intensity of AMPK and ACC was expressed relative to the control level.
22
23
24
25
26
27
28
29
30
31
32
33
34
35
36
37
38
39
40
41
42
43
44
45
46
47
48
49
50
51
52
53

54 *2.10. Statistical Analysis*

55
56 Results are expressed as mean ± standard error of mean (SEM) of measurements. For
57 statistical analysis, two-way ANOVA with Bonferroni's post test was performed using
58
59
60
61
62
63
64
65

GraphPad Prism version 4.00 for Windows (GraphPad Software, San Diego California USA, www.graphpad.com), with statistical significance set at $P < 0.05$.

3. RESULTS

3.1. Food intake, body weight, and organ weights

The average daily food intake throughout the experimental period was significantly greater among the obese Zucker rats than among their lean littermates (**Table 1**), and resveratrol did not modify this parameter in either rat strain.

The body weight of obese Zucker rats was significantly higher ($P < 0.00001$) than that of their lean littermates when the treatment began. Chronic oral administration of resveratrol did not produce changes in body weight in either rat strain (**Table 1**).

The liver weight of the obese animals was much higher when compared with their lean littermates ($P < 0.001$) (**Table 1**). Eight weeks of resveratrol administration did not affect this parameter in either rat strain (**Table 1**).

The obese animals were, as expected, characterized by significant obesity and a much higher content of abdominal fat (epididymal and retroperitoneal adipose tissue) compared with the lean animals ($P < 0.00001$) (**Table 1**). In the obese rats, resveratrol treatment was associated with a significantly lower content of abdominal fat ($P < 0.01$ vs. OC), while no effects were observed in the lean rats (**Table 1**).

3.2. Effects of resveratrol on plasma parameters

Fasting plasma glucose was significantly higher in the obese Zucker rats before treatment compared with the lean controls ($P < 0.001$) (**Fig. 2A**). Similarly, fasting plasma insulin was approximately three-fold higher in the obese animals than in the lean animals ($P < 0.05$) (**Fig. 2B**). After 4 weeks of resveratrol administration, the OR rats presented the same

1 fasting levels of circulating glucose as the lean animals, and showed significantly reduced
2 fasting plasma insulin concentration compared with the values observed in the OC rats ($P <$
3 0.001) (**Fig. 2A, 2B**). As expected, the OC rats had greater insulin resistance, expressed as
4 HOMA-IR, than did the LC rats. This parameter was significantly improved in the OR rats (P
5 < 0.001 vs. OC) (**Fig. 2D**). All these effects were maintained after 8 weeks of treatment.
6
7
8
9

10
11 Obese Zucker rats have hyperleptinemia, as this experimental model is characterized
12 by genetic error in leptin receptor gene expression [29, 30]. As expected, this alteration was
13 present among the obese rats before the experiment began. Although no differences were
14 observed in this parameter in the obese rats treated with resveratrol for 4 weeks, by the end of
15 the experimental period, plasma leptin concentration was significantly reduced in the OR rats
16 ($P < 0.01$ vs. OC), (**Fig. 2C**).
17
18
19
20
21
22
23
24
25

26 Plasma levels of triglycerides, FFA and total cholesterol were higher in the OC than in
27 the lean rats before the treatment began ($P < 0.01$) (**Table 2**). With respect to the OC rats, the
28 plasma concentrations of triglycerides, FFA and total cholesterol decreased by 31.6%, 26.2%
29 and 29.7%, respectively ($P < 0.05$ vs. OC) among the OR rats. However, among the lean rats
30 no differences were found between the rats given resveratrol and their controls (**Table 2**).
31
32
33
34
35
36
37
38
39
40

41 *3.3. Effects of resveratrol on liver parameters*

42
43 Likewise, by the end of the experimental period the content of triglycerides and total
44 cholesterol in the liver had increased more than twofold in the obese rats compared with the
45 lean rats ($P < 0.00001$), and treatment with resveratrol significantly lowered these levels by
46 approximately 45% and 47% respectively (**Fig. 3A**) ($P < 0.00001$ vs. OC).
47
48
49
50
51
52
53

54 We also analyzed the liver expression of AMPK, p-AMPK, ACC and p-ACC by the
55 Western Blot method. Although there were no differences between the groups in AMPK or
56 ACC expression in the liver (**Fig. 3B**) compared with the lean control rats, Thr-172
57
58
59
60
61
62
63
64
65

1 phosphorylation of AMPK was dramatically decreased in obese Zucker rat livers by
2 approximately 50% ($P < 0.001$) (**Fig. 3C**). Likewise, inhibition of AMPK activation was
3 confirmed by decreased phosphorylation of ACC in the livers of the obese rats (**Fig. 3D**). In
4 the obese Zucker rats treated with resveratrol (10 mg/kg/day), phosphorylation of AMPK had
5 increased approximately twofold ($P < 0.001$) (**Fig. 3C**) and phosphorylation of ACC had
6 risen by 35.3% ($P < 0.01$) with respect to the OC rats (**Fig. 3D**).
7
8
9
10
11
12
13
14
15
16

17 3.4. *Effects of resveratrol on visceral adipose tissue parameters*

18 VAT NO_x levels increased 1.67-fold in the OC rats ($P < 0.01$ vs. LC rats) (**Fig. 4A**).
19 In the OR rats this parameter was 38% lower than among the OC group ($P < 0.01$).
20 Adiponectin concentration in VAT was about 3.5-fold lower among the OC rats than among
21 the LC rats ($P < 0.0001$). A daily intake of resveratrol for eight weeks increased VAT
22 adiponectin concentration in the obese rats by 38% ($P < 0.01$ vs. OC rats) (**Fig. 4B**). No
23 differences in this parameter were observed among the lean rats groups. TNF- α production
24 by VAT was 2.9-fold higher in the obese Zucker rats than in the lean rats ($P < 0.001$) (**Fig.**
25 **4C**). The daily administration of 10 mg/kg of resveratrol for eight weeks reduced the
26 production of this inflammatory cytokine by 30% in the obese rats ($P < 0.01$ vs. OC).
27
28
29
30
31
32
33
34
35
36
37
38
39
40

41 We found that eNOS protein expression was down-regulated by 60% in the VAT of
42 the OC rats compared with the LC rats ($P < 0.0001$) (**Fig. 5**). Chronic administration of
43 resveratrol increased eNOS protein expression in the VAT of the obese Zucker rats 2.2-fold
44 ($P < 0.0001$ vs. OC), but produced no effects on the expression of either protein among the
45 lean rats (**Fig. 5**).
46
47
48
49
50
51
52
53

54 Thr-172 phosphorylation of AMPK was significantly reduced in obese Zucker rat
55 VAT compared with the lean control rats (**Fig. 6A, 6C**). Similarly, inhibition of AMPK
56 activation was confirmed by a reduction of 35% in phosphorylation of ACC in the VAT of the
57
58
59
60
61
62
63
64
65

1 obese rats (**Fig. 6B, 6D**) ($P < 0.01$ vs. LC). In obese Zucker rats treated with resveratrol (10
2 mg/kg/day), phosphorylation of both AMPK (**Fig. 6A, 6C**) and ACC (**Fig. 6B, 6D**) increased
3
4 1.6-fold in VAT ($P < 0.05$ vs. OC), confirming the activation of AMPK by resveratrol in the
5
6 VAT of the obese Zucker rats.
7
8
9

10 11 12 3.5. Systolic blood pressure

13
14 At the beginning of the experimental period, the obese Zucker rats showed moderate
15 but significantly higher SBP values than those of the lean Zucker rats ($P < 0.0001$) (**Fig. 7**).
16
17 During the experimental period, SBP in the obese control rats remained unchanged while in
18 the obese rats that received oral resveratrol, these values were significantly decreased ($P <$
19 0.01) from the first week of administration, with a reduction of 79.1% by the end of the
20 experimental period ($P < 0.0001$) (**Fig. 7**). The administration of resveratrol did not affect
21 SBP among the lean rats.
22
23
24
25
26
27
28
29
30
31

32 33 34 3.7. eNOS expression in aortic rings

35
36 eNOS protein expression was five-fold lower ($P < 0.0001$) in the aortic rings of the
37 OC rats compared to the corresponding values for the LC rats (**Fig. 8**). Chronic
38 administration of resveratrol increased aortic expression of this protein 3.7-fold in the obese
39 Zucker rats ($P < 0.00001$ vs. OC).
40
41
42
43
44
45
46
47
48
49

50 4. DISCUSSION

51
52
53 In the current study, the obese (fa/fa) Zucker rat was used as an experimental model of
54 metabolic syndrome. Daily oral administration of resveratrol to obese Zucker rats for 8 weeks
55 reduces dyslipidemia, hyperinsulinemia, and hyperleptinemia that feature this experimental
56
57
58
59
60
61
62
63
64
65

1
2
3
4
5
6
7
8
9
10
11
12
13
14
15
16
17
18
19
20
21
22
23
24
25
26
27
28
29
30
31
32
33
34
35
36
37
38
39
40
41
42
43
44
45
46
47
48
49
50
51
52
53
54
55
56
57
58
59
60
61
62
63
64
65

model. Such effects were accompanied by a reduction in the inflammatory status characteristic of this model, while an increase in AMPK activity was found in the liver and VAT of obese rats treated with resveratrol. An important reduction in SBP was also observed in the obese Zucker rats treated with resveratrol, an effect that is related to enhanced eNOS expression in the aorta.

Although no significant differences were observed in the final body weight between the obese groups, the administration of resveratrol was associated with a modest but non significant decrease in overall body weight compared to the control group, an effect that is not due to a lower diet intake as resveratrol did not modify the average daily food intake in either rat strain. Resveratrol has recently been shown to protect mice from many detrimental effects of diet-induced obesity. Lagouge et al. reported that resveratrol prevents diet-induced obesity [34]. Another study shows that mice fed a high-calorie diet plus resveratrol are slightly lighter than those fed a high-calorie diet during the initial months of treatment [21]. In both studies, weight gain is significantly attenuated in mice that are given high doses of resveratrol. This fact suggests that a longer treatment with resveratrol could produce a slight but significant reduction in body weight. Our results show that resveratrol administration ameliorates insulin resistance in obese Zucker rats after 4 weeks of treatment, while hyperleptinemia does not decrease until 8 weeks. We hypothesize that these effects are previous and would lead finally to a decrease in body weight.

Liver weight remained unchanged in the resveratrol-treated animals. This is an important finding, in view of the fact that long-term exposure to other AMPK activators, such as AICAR, produces a moderate increase in the liver weight of animals [35, 36] that has been considered a potential side-effect of this kind of molecule, and which has not been observed in the chronic treatment with resveratrol.

In our experiment, long-term resveratrol administration leads to a decrease in abdominal fat content. This result suggests that there is an increased degradation of adipose tissue. In fact,

1 resveratrol significantly activated AMPK in the adipose tissue of our animals, eventually
2 producing the phosphorylation and inhibition of ACC which leads to an increase in fatty acid
3 oxidation and to the inhibition of fatty acid synthesis. This effect, together with other events
4 taking place outside the adipose tissue, could explain Previous studies with human hepatocytes
5 and type 1 diabetic LDL receptor deficient mice have shown that polyphenols strongly stimulate
6 hepatic AMPK and reduce lipid accumulation, which in turn attenuates hyperlipidemia and
7 atherosclerosis in diabetic mice [11]. Our results show that resveratrol exerts similar effects in
8 obese Zucker rats, as it decreases FFA circulating levels, leading to decrease triglyceride and
9 cholesterol production and accumulation in the liver, while enhancing AMPK activation and
10 ACC inhibition. These actions of resveratrol contribute to ameliorate insulin resistance, which
11 was already improved after 4 weeks of treatment, and also to reduce hyperleptinemia at a later
12 stage.
13
14
15
16
17
18
19
20
21
22
23
24
25
26
27

28
29 Recent literature dealing with metabolic syndrome documents the involvement of an
30 important inflammatory component in its etiopathology [41]. Obese and type 2 diabetes Zucker
31 rats and human subjects are characterized by adipose tissue overproduction of pro-inflammatory
32 cytokines such as TNF- α and by decreased plasma concentration of anti-inflammatory
33 adipocytokines such as adiponectin [14, 42-44, present results]. Under normal conditions, the
34 low amounts of NO produced by eNOS play a key role in the regulation of metabolic
35 homeostasis, since mice lacking the eNOS gene develop metabolic syndrome [45]. Furthermore,
36 eNOS expression is down-regulated by TNF- α in the adipose tissue of obese Zucker rats [46].
37 Hence, treatments that decrease eNOS down-regulation mediated by pro-inflammatory cytokines
38 are expected to ameliorate the alterations found in metabolic syndrome [47]. Our results show
39 that the chronic administration of resveratrol reduces adipose tissue TNF- α and NO_x production
40 in obese Zucker rats, while increasing plasma adiponectin concentration, resulting in an
41 important anti-inflammatory effect. Moreover, this dose of resveratrol produces an enhancement
42
43
44
45
46
47
48
49
50
51
52
53
54
55
56
57
58
59
60
61
62
63
64
65

1 of eNOS expression in the adipose tissue of obese Zucker rats, an effect that could be related to
2 the reduction in TNF- α , since this cytokine inhibits eNOS expression in adipose tissue [46].
3
4 Furthermore, we observed increased phosphorylation of AMPK together with higher
5 phosphorylation of ACC, confirming the activation of AMPK, in the VAT of the obese Zucker
6 rats treated with resveratrol compared with the controls. Activation of AMPK by resveratrol
7 would also mediate the enhancement of eNOS expression in the VAT of obese Zucker rats, an
8 effect that has been described previously in endothelial cells [48].
9
10
11
12
13
14
15
16

17 Chronic administration of resveratrol produced a reduction in the SBP values of obese
18 Zucker rats compared with the controls from the first week of intake. Beneficial cardiovascular
19 properties of this polyphenol have been described previously [15, 19, 20]. Furthermore, the
20 chronic administration of resveratrol enhances aortic eNOS expression in obese Zucker rats. This
21 effect is related to the reduced SBP values of OR rats with respect to the OC rats. Resveratrol has
22 been described as an efficient antihypertensive agent in an experimental model of hypertension
23 in rats, when administered at the doses of 10 and 50 mg/kg of body weight [49]. This
24 antihypertensive effect has been related to the beneficial properties of resveratrol on endothelial
25 dysfunction. In the model of obese Zucker rats, as well as in subjects with insulin resistance,
26 FFA are involved both in insulin resistance and in the inhibition of aortic eNOS activity through
27 an oxidative mechanism [50, 51]. The present results show that the chronic daily administration
28 of resveratrol restores aortic expression of eNOS in obese Zucker rats, an effect which could
29 explain the antihypertensive effects of this polyphenol in the insulin resistance model described,
30 and which would be mediated by its antioxidant properties [15].
31
32
33
34
35
36
37
38
39
40
41
42
43
44
45
46
47
48
49
50
51

52 In conclusion, the present results show for the first time that daily chronic administration
53 of 10 mg/kg of resveratrol reduces dyslipidemia, insulin resistance, hyperleptinemia and
54 hypertension in the experimental model of metabolic syndrome of obese Zucker rats, these
55 effects being accompanied by a reduction in the inflammatory status in VAT and the activation
56
57
58
59
60
61
62
63
64
65

1 of AMPK in target tissues of metabolic syndrome such as liver and VAT. Our results corroborate
2 the beneficial effects of resveratrol in the treatment of alterations involved in metabolic
3
4 syndrome.
5
6
7
8
9

10 **ACKNOWLEDGEMENTS**

11
12
13
14 This study was supported by grants of Spanish Ministerio de Educación y Ciencia (SAF2004-
15
16 06762) and Junta de Andalucía (CTS1528) and was funded in part by the Ministerio de
17
18 Sanidad y Consumo, Instituto de Salud Carlos III, (Red HERACLES RD06/0009). The
19
20 authors want to thank Glenn Harding for the English correction of the manuscript.
21
22
23
24
25
26
27
28
29
30
31
32
33
34
35
36
37
38
39
40
41
42
43
44
45
46
47
48
49
50
51
52
53
54
55
56
57
58
59
60
61
62
63
64
65

REFERENCES

- 1
2 1. Reaven GM. Role of insulin resistance in human disease. *Diabetes* 1998;37:1595-607.
- 3
4 2. Reaven G Pathophysiology of insulin resistance in human disease. *Physiol Rev*
5
6 1995;75:473-86.
- 7
8 3. Lebovitz HE. Insulin resistance; definition and consequences. *Exp Clin Endocrinol*
9
10 *Diabetes* 2001;109:S135-48.
- 11
12 4. Towler MC, Hardie DG. AMP-activated protein kinase in metabolic control and
13
14 insulin signaling. *Circ Res* 2007;100:328-41.
- 15
16 5. Hardie DG. Minireview: the AMP-activated protein kinase cascade: the key sensor of
17
18 cellular energy status. *Endocrinology* 2003;144: 5179-83.
- 19
20 6. Hawley SA, Selbert MA, Goldstein EG, Edelman AM, Carling D, Hardie DG. 5'-AMP
21
22 activates the AMP-activated protein kinase cascade, and Ca²⁺/calmodulin activates
23
24 the calmodulin-dependent protein kinase I cascade, via three independent
25
26 mechanisms. *J Biol Chem* 1995;270:27186-91.
- 27
28 7. Hardie DG, Pan DA. Regulation of fatty acid synthesis and oxidation by the AMP-
29
30 activated protein kinase. *Biochem Soc Trans* 2002;30:1064-70.
- 31
32 8. Yamauchi T, Kamon J, Minokoshi Y, Ito Y, Waki H, Uchida S, et al. Adiponectin
33
34 stimulates glucose utilization and fatty-acid oxidation by activating AMP-activated
35
36 protein kinase. *Nat Med* 2002;8:1288-95.
- 37
38 9. Minokoshi Y, Kim YB, Peroni OD, Fryer LG, Müller C, Carling D, et al. Leptin
39
40 stimulates fatty-acid oxidation by activating AMP-activated protein kinase. *Nature*
41
42 2002;415:339-43.
- 43
44 10. Ruderman N, Prentki M. AMP kinase and malonyl-CoA: targets for therapy of the
45
46 metabolic syndrome. *Nat Rev Drug Discov* 2004;3:340-51.
- 47
48
49
50
51
52
53
54
55
56
57
58
59
60
61
62
63
64
65

- 1
2
3
4
5
6
7
8
9
10
11
12
13
14
15
16
17
18
19
20
21
22
23
24
25
26
27
28
29
30
31
32
33
34
35
36
37
38
39
40
41
42
43
44
45
46
47
48
49
50
51
52
53
54
55
56
57
58
59
60
61
62
63
64
65
11. Zang M, Xu S, Maitland-Toolan KA, Zuccollo A, Hou X, Jiang B, et al. Polyphenols stimulate AMP-activated protein kinase, lower lipids, and inhibit accelerated atherosclerosis in diabetic LDL receptor-deficient mice. *Diabetes* 2006;55:2180-91.
 12. Collins QF, Liu HY, Pi J, Liu Z, Quon MJ, Cao W. Epigallocatechin-3-gallate (EGCG), a green tea polyphenol, suppresses hepatic gluconeogenesis through 5'-AMP-activated protein kinase. *J Biol Chem* 2007;282:30143-9.
 13. Kim EJ, Jung SN, Son KH, Kim SR, Ha TY, Park MG, et al. Antidiabetes and antiobesity effect of cryptotanshinone via activation of AMP-activated protein kinase. *Mol Pharmacol* 2007;72:62-72.
 14. Rivera L, Moron R, Sánchez M, Zarzuelo A, Galisteo M. Quercetin ameliorates metabolic syndrome and improves the inflammatory status in obese Zucker rats. *Obesity* 2008;16:2081-7.
 15. Orallo F, Alvarez E, Camiña M, Leiro JM, Gómez E, Fernández P. The possible implication of trans-Resveratrol in the cardioprotective effects of long-term moderate wine consumption. *Mol Pharmacol* 2002;61:294-302.
 16. Wolter F, Ulrich S, Stein J. Molecular mechanisms of the chemopreventive effects of resveratrol and its analogs in colorectal cancer: key role of polyamines? *J Nutr* 2004;134:3219-22.
 17. Leiro J, Alvarez E, Arranz JA, Laguna R, Uriarte E, Orallo F. Effects of cis-resveratrol on inflammatory murine macrophages: antioxidant activity and down-regulation of inflammatory genes. *J Leukoc Biol* 2004;75:1156-65.
 18. Bhat KPL, Kosmeder JW 2nd, Pezzuto JM. Biological effects of resveratrol. *Antioxid Redox Signal* 2001;3:1041-64.

- 1
2
3
4
5
6
7
8
9
10
11
12
13
14
15
16
17
18
19
20
21
22
23
24
25
26
27
28
29
30
31
32
33
34
35
36
37
38
39
40
41
42
43
44
45
46
47
48
49
50
51
52
53
54
55
56
57
58
59
60
61
62
63
64
65
19. Wallerath T, Deckert G, Ternes T, Anderson H, Li H, Witte K, et al. Resveratrol, a polyphenolic phytoalexin present in red wine, enhances expression and activity of endothelial nitric oxide synthase. *Circulation* 2002;106:1652-8.
 20. Bradamante S, Barengi L, Villa A. Cardiovascular protective effects of resveratrol. *Cardiovasc Drug Rev* 2004;22:169-88.
 21. Baur JA, Pearson KJ, Price NL, Jamieson HA, Lerin C, Kalra A, et al. Resveratrol improves health and survival of mice on a high-calorie diet. *Nature* 2006;444:337-42.
 22. Reznick RM, Zong H, Li J, Morino K, Moore IK, Yu HJ, et al. Aging-associated reductions in AMP-activated protein kinase activity and mitochondrial biogenesis. *Cell Metab* 2007;5:151-6.
 23. Milne JC, Lambert PD, Schenk S, Carney DP, Smith JJ, Gagne DJ, et al. Small molecule activators of SIRT1 as therapeutics for the treatment of type 2 diabetes. *Nature* 2007;450:712-6.
 24. Hou X, Xu S, Maitland-Toolan KA, Sato K, Jiang B, Ido Y, et al. SIRT1 regulates hepatocyte lipid metabolism through activating AMP-activated protein kinase. *J Biol Chem* 2008;283:20015-26.
 25. Park CE, Kim MJ, Lee JH, Min BI, Bae H, Choe W, et al. Resveratrol stimulates glucose transport in C2C12 myotubes by activating AMP-activated protein kinase. *Exp Mol Med* 2007;39:222-9.
 26. Dasgupta B, Milbrandt J. Resveratrol stimulates AMP kinase activity in neurons. *Proc Natl Acad Sci U SA* 2007;104:7217-22.
 27. Zucker LM, Antoniades HN. Insulin and obesity in the Zucker genetically obese rat 'fatty'. *Endocrinology* 1972;90:1320-33.
 28. Kurtz TW, Morris RC, Pershadsingh HA. The fatty Zucker rat as a genetic model of obesity and hypertension. *Hypertension* 1989;13:896-901.

- 1
2
3
4
5
6
7
8
9
10
11
12
13
14
15
16
17
18
19
20
21
22
23
24
25
26
27
28
29
30
31
32
33
34
35
36
37
38
39
40
41
42
43
44
45
46
47
48
49
50
51
52
53
54
55
56
57
58
59
60
61
62
63
64
65
29. Iida M, Murakami T, Ishida K, Mizuno A, Kuwajima M, Shima K. Phenotype-linked amino acid alteration in leptin receptor cDNA from Zucker fatty (fa/fa) rat. *Biochem Biophys Res Commun* 1996;222:19-26.
 30. Phillips MS, Liu Q, Hammond HA, Dugan V, Hey PJ, Caskey CJ, et al. Leptin receptor missense mutation in the fatty Zucker rat. *Nat Genet.* 1996;13:18-9.
 31. Matthews D, Hosker J, Rudenski A, Naylor B, Treacher D, Turner R. Homeostasis model assessment: insulin resistance and B-cell function from fasting plasma glucose and insulin concentrations in man. *Diabetologia* 1985; 28: 412-9.
 32. Bligh EG, Dyer WJ. A rapid method of total lipid extraction and purification. *Can J Med Sci* 1959;37:911-7.
 33. Duarte J, Jimenez R, O'Valle F, Galisteo M, Pérez-Palencia R, Vargas F, et al. Protective effects of the flavonoid quercetin in chronic nitric oxide deficient rats. *J Hypertens* 2002;20:1843-54.
 34. Lagouge M, Argmann C, Gerhart-Hines Z, Meziane H, Lerin C, Daussin F, et al. Resveratrol improves mitochondrial function and protects against metabolic disease by activating SIRT1 and PGC-1alpha. *Cell* 2006;127:1109-22.
 35. Buhl ES, Jessen N, Pold R, Ledet T, Flyvbjerg A, Pedersen SB, et al. Long-term AICAR administration reduces metabolic disturbances and lowers blood pressure in rats displaying features of the insulin resistance syndrome. *Diabetes* 2002;51:2199-206.
 36. Winder WW, Holmes BF, Rubink DS, Jensen EB, Chen M, Holloszy JO. Activation of AMP-activated protein kinase increases mitochondrial enzymes in skeletal muscle. *J Appl Physiol* 2000;88:2219-26.

- 1
2
3
4
5
6
7
8
9
10
11
12
13
14
15
16
17
18
19
20
21
22
23
24
25
26
27
28
29
30
31
32
33
34
35
36
37
38
39
40
41
42
43
44
45
46
47
48
49
50
51
52
53
54
55
56
57
58
59
60
61
62
63
64
65
37. Raz I, Eldor R, Cernea S, Shafrir E. Diabetes: insulin resistance and derangements in lipid metabolism. Cure through intervention in fat transport and storage. *Diabetes Metab Res Rev* 2005;21:3-14.
38. Julius U. Influence of plasma free fatty acids on lipoprotein synthesis and diabetic dyslipidemia. *Exp Clin Endocrinol Diabetes* 2003;111:246-50.
39. Pavlic M, Valéro R, Duez H, Xiao C, Szeto L, Patterson BW, et al. Triglyceride-rich lipoprotein-associated apolipoprotein C-III production is stimulated by plasma free fatty acids in humans. *Arterioscler Thromb Vasc Biol* 2008;28:1660-5.
40. Yu X, McCorkle S, Wang M, Lee Y, Li J, Saha AK, et al. Leptinomimetic effects of the AMP kinase activator AICAR in leptin-resistant rats: prevention of diabetes and ectopic lipid deposition. *Diabetologia* 2004;47:2012-21.
41. Dandona P, Aljada A, Chaudhuri A, Mohanty P, Garg R. Metabolic syndrome: A comprehensive perspective based on interactions between obesity, diabetes, and inflammation. *Circulation* 2005;111:1448-54.
42. Galisteo M, Sanchez M, Vera R, Gonzalez M, Anguera A, Duarte J, et al. A diet supplemented with husks of *Plantago ovata* reduces the development of endothelial dysfunction, hypertension, and obesity by affecting adiponectin and TNF-alpha in obese Zucker rats. *J Nutr* 2005;135:2399-404.
43. Hotamisligil GS, Arner P, Caro JF, Atkinson RL, Spiegelman BM. Increased adipose tissue expression of tumor necrosis factor-alpha in human obesity and insulin resistance. *J Clin Invest* 1995;95:2409-15.
44. Esposito K, Nappo F, Giugliano F, Di Palo C, Ciotola M, Barbieri M, et al. Meal modulation of circulating interleukin 18 and adiponectin concentrations in healthy subjects and in patients with type 2 diabetes mellitus. *Am J Clin Nutr* 2003;78:1135-40.

- 1
2
3
4
5
6
7
8
9
10
11
12
13
14
15
16
17
18
19
20
21
22
23
24
25
26
27
28
29
30
31
32
33
34
35
36
37
38
39
40
41
42
43
44
45
46
47
48
49
50
51
52
53
54
55
56
57
58
59
60
61
62
63
64
65
45. Duplain H, Burcelin R, Sartori C, Cook S, Egli M, Lepori M, et al. Insulin resistance, hyperlipidemia, and hypertension in mice lacking endothelial nitric oxide synthase. *Circulation* 2001;104:342-5.
46. Valerio A, Cardile A, Cozzi V, Bracale R, Tedesco L, Pisconti A, et al. TNF-alpha downregulates eNOS expression and mitochondrial biogenesis in fat and muscle of obese rodents. *J Clin Invest* 2006;116:2791-8.
47. Perreault M, Marette A. Targeted disruption of inducible nitric oxide synthase protects against obesity-linked insulin resistance in muscle. *Nat Med* 2001;7:1138-43.
48. Levine YC, Li GK, Michel T. Agonist-modulated regulation of AMP-activated protein kinase (AMPK) in endothelial cells. Evidence for an AMPK - Rac1 - Akt - endothelial nitric-oxide synthase pathway. *J Biol Chem* 2007;282:20351-64.
49. Liu Z, Song Y, Zhang X, Liu Z, Zhang W, Mao W, et al. Effects of trans-resveratrol on hypertension-induced cardiac hypertrophy using the partially nephrectomized rat model. *Clin Exp Pharmacol Physiol* 2005;32:1049-54.
50. Du X, Edelstein D, Obici S, Higham N, Zou MH, Brownlee M. Insulin resistance reduces arterial prostacyclin synthase and eNOS activities by increasing endothelial fatty acid oxidation. *J Clin Invest* 2006;116:1071-80.
51. Steinberg HO, Tarshoby M, Monestel R, Hook G, Cronin J, Johnson A, et al. Elevated circulating free fatty acid levels impair endothelium-dependent vasodilation. *J Clin Invest* 1997;100:1230-9.

7. FIGURE LEGENDS

Figure 1

Chemical structure of resveratrol.

Figure 2

Effects of resveratrol on circulating concentration of glucose (A), insulin (B), and leptin (C) and Homeostasis model assessment of insulin resistance (HOMA-IR) (D) in lean and obese Zucker rats before and after 4 or 8 weeks of treatment. Rats received vehicle (control) or resveratrol (10 mg/kg/day). Experimental groups: LC, lean control rats; LR, lean rats treated with resveratrol; OC, obese control rats; OR, obese rats treated with resveratrol. HOMA-IR: Fasting glucose mmol/l x fasting insulin pmol/l)/22.5. Data are expressed as means \pm SEM (n = 7). Means at a time without a common letter differ, P < 0.05.

Figure 3

Effects of long-term resveratrol treatment in hepatic alterations of obese Zucker rats. Hepatic content of triglycerides and total cholesterol (A) in lean and obese Zucker rats receiving vehicle (control) or resveratrol (10 mg/kg/day) for 8 weeks. AMPK, phospho-AMKP (Thr172) (p-AMPK), ACC and phospho-ACC (p-ACC) protein expression in the liver of lean and obese Zucker rats receiving vehicle (control) or resveratrol (10 mg/kg/day) for 8 weeks (B). 30 μ g of protein of liver homogenates were resolved by SDS-PAGE and probed using antibodies directed against AMPK, p-AMPK, ACC and p-ACC. Immunoblots are representative duplicates of liver homogenates of five different rats for each group of treatment. Densitometric analysis of AMPK (C) and ACC phosphorylation (D) in the liver of lean and obese rats given vehicle or resveratrol (10 mg/kg/day) for 8 weeks. Levels of p-

1 AMPK were normalized to the total AMPK and compared to the LC group measurements
2 which were assigned a value of 1.0 (C). Values are expressed as means \pm SEM (n = 5). Levels
3
4 of p-ACC were normalized to the total ACC and compared to the LC group measurements
5
6 which were assigned a value of 1.0 (D). Values are expressed as means \pm SEM (n = 5).
7
8
9 Experimental groups: LC, lean control rats; LR, lean rats treated with resveratrol; OC, obese
10 control rats; OR, obese rats treated with resveratrol. Means without a common letter differ, P
11
12
13
14
15
16
17
18
19
20
21
22
23
24
25
26
27
28
29
30
31
32
33
34
35
36
37
38
39
40
41
42
43
44
45
46
47
48
49
50
51
52
53
54
55
56
57
58
59
60
61
62
63
64
65

Figure 4

Effects of resveratrol on inflammatory and anti-inflammatory markers secreted by adipose tissue in lean and obese Zucker rats. Adipose tissue nitrates plus nitrites (NO_x) (A), adiponectin (B) and TNF- α (C) secretion in lean and obese Zucker rats receiving vehicle (control) or resveratrol (10 mg/kg/day) for 8 weeks. Data are expressed as means \pm SEM (n = 7). Means without a common letter differ, P < 0.05.

Figure 5

eNOS protein expression in the visceral adipose tissue (VAT) of lean and obese Zucker rats given vehicle (control) or resveratrol (10 mg/kg/day) for 8 weeks. 50 μ g of protein of VAT homogenates were resolved by SDS-PAGE and probed using an antibody directed against eNOS. Immunoblots are representative duplicates of VAT homogenates of five different rats for each group of treatment. Experimental groups: LC, lean control rats; LR, lean rats treated with resveratrol; OC, obese control rats; OR, obese rats treated with resveratrol. Relative values are expressed as means \pm SEM (n = 5), and they indicate the values from densitometric analysis normalized to β -actin, relative to LC measurements, which were assigned a value of 1.0. Means without a common letter differ, P < 0.05.

Figure 6

AMPK, phospho-AMKP (Thr172) (p-AMPK) (A), ACC and phospho-ACC (p-ACC) (B) protein expression in the visceral adipose tissue (VAT) of lean and obese rats given vehicle or resveratrol (10 mg/kg/day) for 8 weeks. 30 μ g of protein of VAT homogenates were resolved by SDS-PAGE and probed using antibodies directed against AMPK, p-AMPK, ACC and p-ACC. Immunoblots (A and B) are representative duplicates of VAT homogenates of five different rats for each group of treatment. Densitometric analysis of AMPK (C) and ACC phosphorylation (D) in the VAT of lean and obese rats given vehicle or resveratrol (10 mg/kg/day) for 8 weeks. Levels of phospho-AMPK were normalized to the total AMPK and compared to the LC group measurements which were assigned a value of 1.0 (C). Values are expressed as means \pm SEM (n = 5). Levels of phospho-ACC were normalized to the total ACC and compared to the LC group measurements which were assigned a value of 1.0 (D). Values are expressed as means \pm SEM (n = 5). Experimental groups: LC, lean control rats; LR, lean rats treated with resveratrol; OC, obese control rats; OR, obese rats treated with resveratrol. Means without a common letter differ, $P < 0.05$.

Figure 7

Evolution of systolic blood pressure (SBP), measured by tail-cuff plethysmography, in lean and obese Zucker rats receiving vehicle (control) or resveratrol (10 mg/kg/day) for 8 weeks. Experimental groups: LC, lean control rats; LR, lean rats treated with resveratrol; OC, obese control rats; OR, obese rats treated with resveratrol. Values are expressed as means \pm SEM (n = 7). Means at a time without a common letter differ, $P < 0.05$.

Figure 8

1 eNOS protein expression in VAT of lean and obese Zucker rats given vehicle (control) or
2 resveratrol (10 mg/kg/day) for 8 weeks. 40 μ g of protein of aortic homogenates were resolved
3
4 by SDS-PAGE and probed using an antibody directed against eNOS. Immunoblots are
5
6 representative duplicates of aortic homogenates of five different rats for each group of
7
8 treatment. Experimental groups: LC, lean control rats; LR, lean rats treated with resveratrol;
9
10 OC, obese control rats; OR, obese rats treated with resveratrol. Relative values are expressed
11
12 as means \pm SEM (n = 5), and they indicate the values from densitometric analysis normalized
13
14 to β -actin, relative to LC measurements, which were assigned a value of 1.0. Means without a
15
16 common letter differ, P < 0.05.
17
18
19
20
21
22
23
24
25
26
27
28
29
30
31
32
33
34
35
36
37
38
39
40
41
42
43
44
45
46
47
48
49
50
51
52
53
54
55
56
57
58
59
60
61
62
63
64
65

Table 1

Food intake, body and organ weight in lean and obese Zucker rats that received vehicle (control) or resveratrol (10 mg/kg/day) for 8 weeks.

Experimental groups ¹	LC (n = 7)	LR (n = 7)	OC (n = 7)	OR (n = 7)
Average food intake (g/day)	20.7 ± 0.1 ^b	20.4 ± 0.2 ^b	22.6 ± 0.6 ^a	22.5 ± 0.5 ^a
Initial body weight (g)	340.3 ± 7.0 ^b	339.4 ± 5.6 ^b	418.9 ± 6.0 ^a	416.9 ± 8.0 ^a
Final body weight (g)	438.0 ± 9.7 ^b	419.7 ± 8.4 ^b	535.4 ± 7.5 ^a	520.0 ± 11.0 ^a
Liver weight (g)	14.3 ± 0.4 ^b	13.0 ± 0.6 ^b	24.7 ± 1.2 ^a	24.1 ± 1.1 ^a
Fat content (g)	7.2 ± 0.5 ^c	7.2 ± 0.9 ^c	21.3 ± 0.4 ^a	19.1 ± 0.5 ^b

Values are expressed as mean ± SEM. Values within a row without a common letter differ significantly, $P < 0.05$. ¹ Experimental groups: lean control group (LC), lean group treated with resveratrol (LR), obese control group (OC) and obese group treated with resveratrol (OR).

Table 2. Lipid concentration in plasma and liver of lean and obese Zucker rats that received vehicle (control) or resveratrol (10 mg/kg/day) for 8 weeks.

Experimental groups ¹	LC (n = 7)	LR (n = 7)	OC (n = 7)	OR (n = 7)
Plasma triglycerides, mmol/l				
Before	0.49 ± 0.01 ^b	0.47 ± 0.04 ^b	4.75 ± 0.20 ^a	4.62 ± 0.34 ^a
8 weeks	0.67 ± 0.05 ^c	0.63 ± 0.06 ^c	5.25 ± 0.39 ^a	3.48 ± 0.18 ^b
Plasma cholesterol, mmol/l				
Before	2.84 ± 0.29 ^b	2.98 ± 0.21 ^b	5.03 ± 0.58 ^a	5.12 ± 0.42 ^a
8 weeks	3.5 ± 0.3 ^c	3.3 ± 0.3 ^c	7.5 ± 0.4 ^a	5.3 ± 0.3 ^b
Plasma FFA, mmol/l				
Before	0.66 ± 0.06 ^b	0.71 ± 0.06 ^b	0.96 ± 0.04 ^a	0.92 ± 0.08 ^a
8 weeks	0.92 ± 0.09 ^b	0.87 ± 0.07 ^b	1.42 ± 0.16 ^a	1.04 ± 0.06 ^b

Values are expressed as mean ± SEM. Values within a row without a common letter differ significantly, $P < 0.05$. ¹ Experimental groups: lean control group (LC), lean group treated with resveratrol (LR), obese control group (OC) and obese group treated with resveratrol (OR).

Figure 1

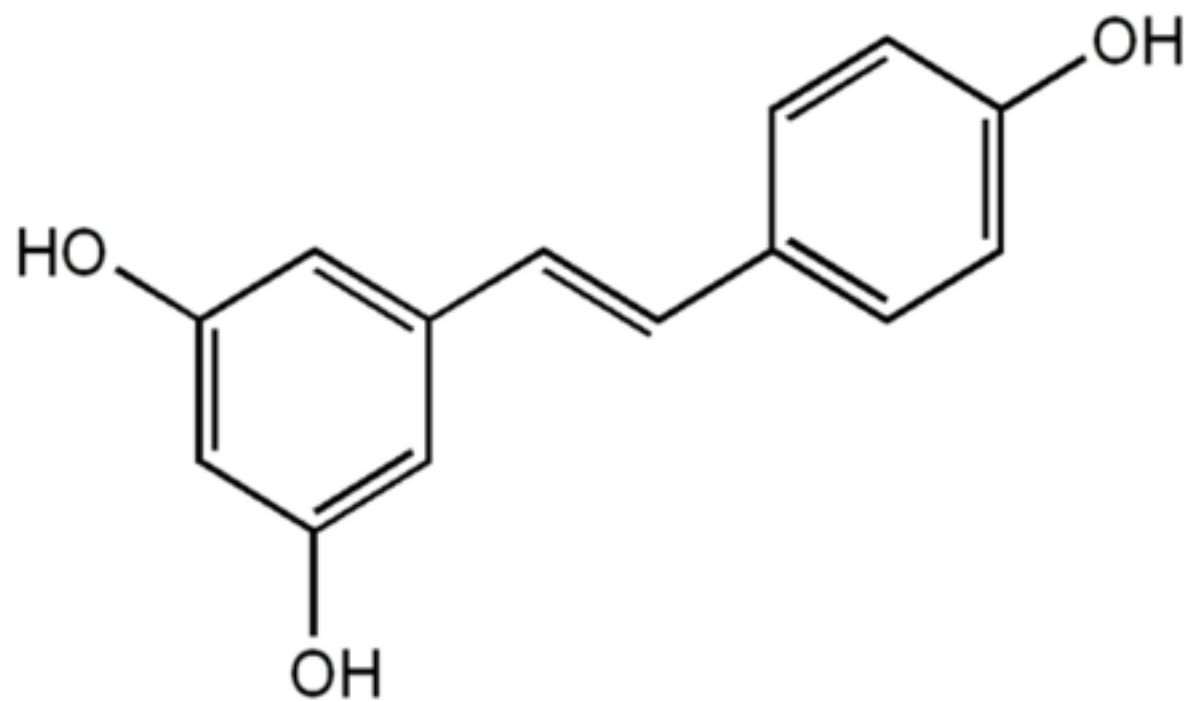


Figure 2

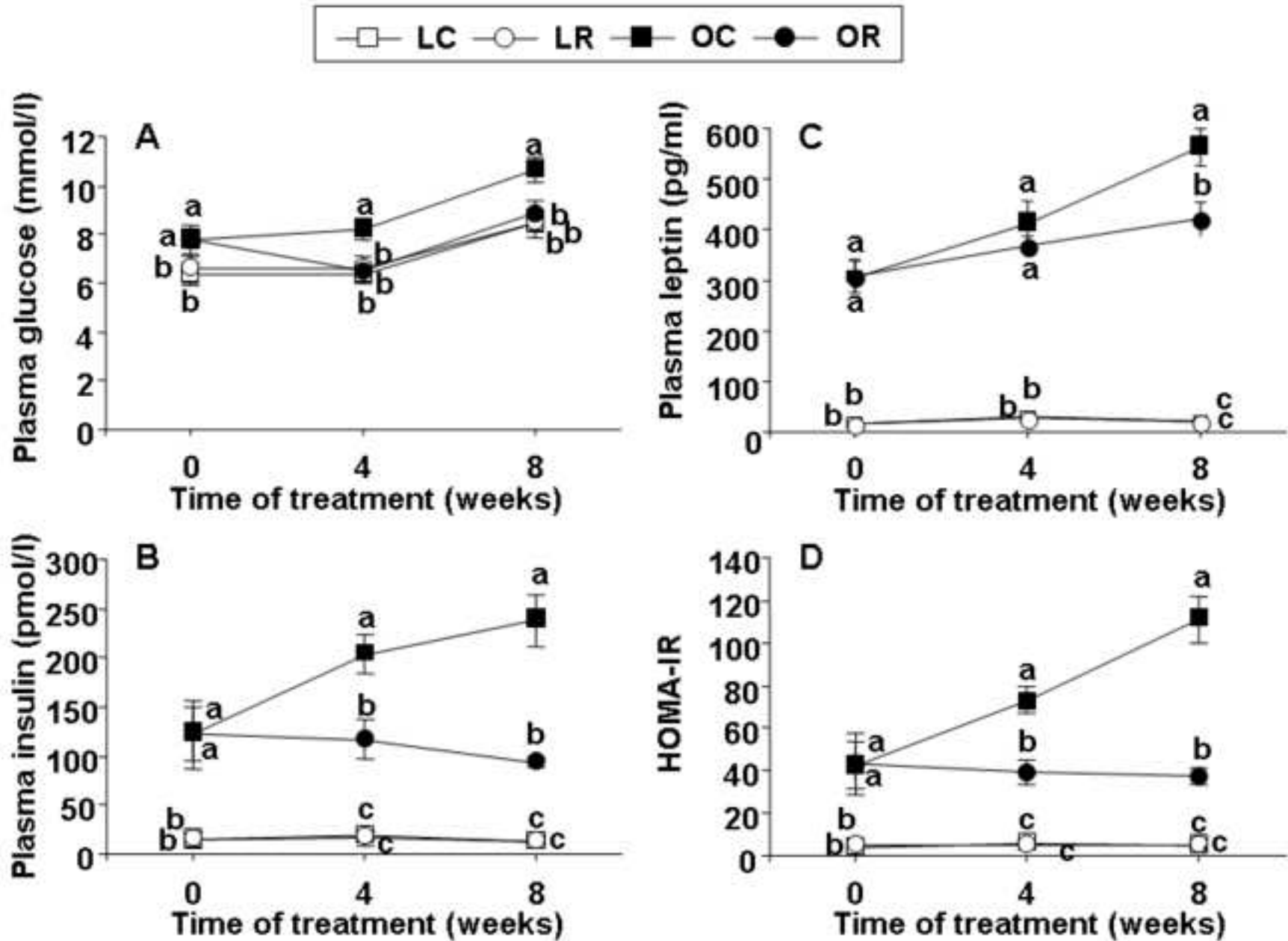


Figure 3

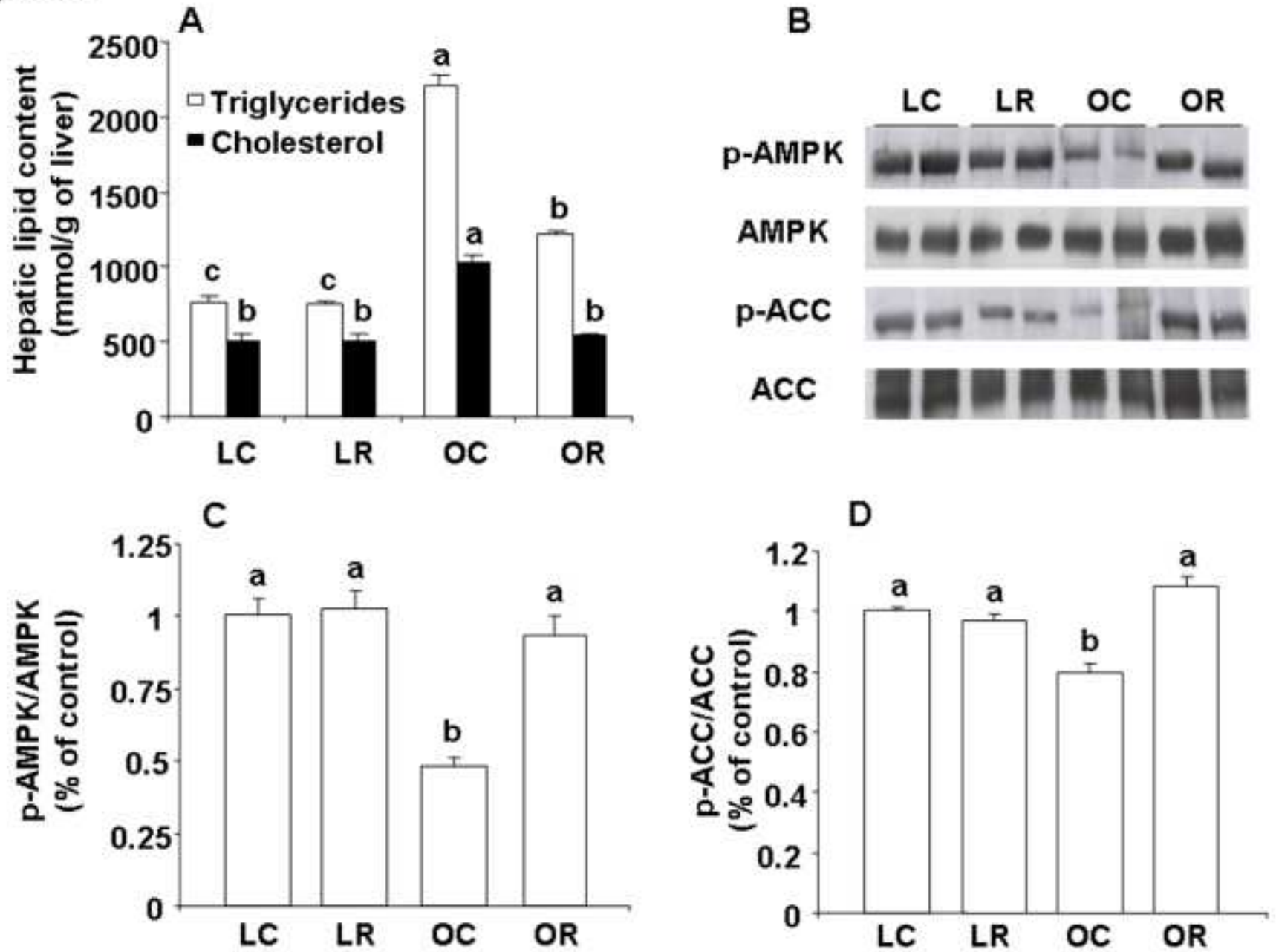


Figure 4

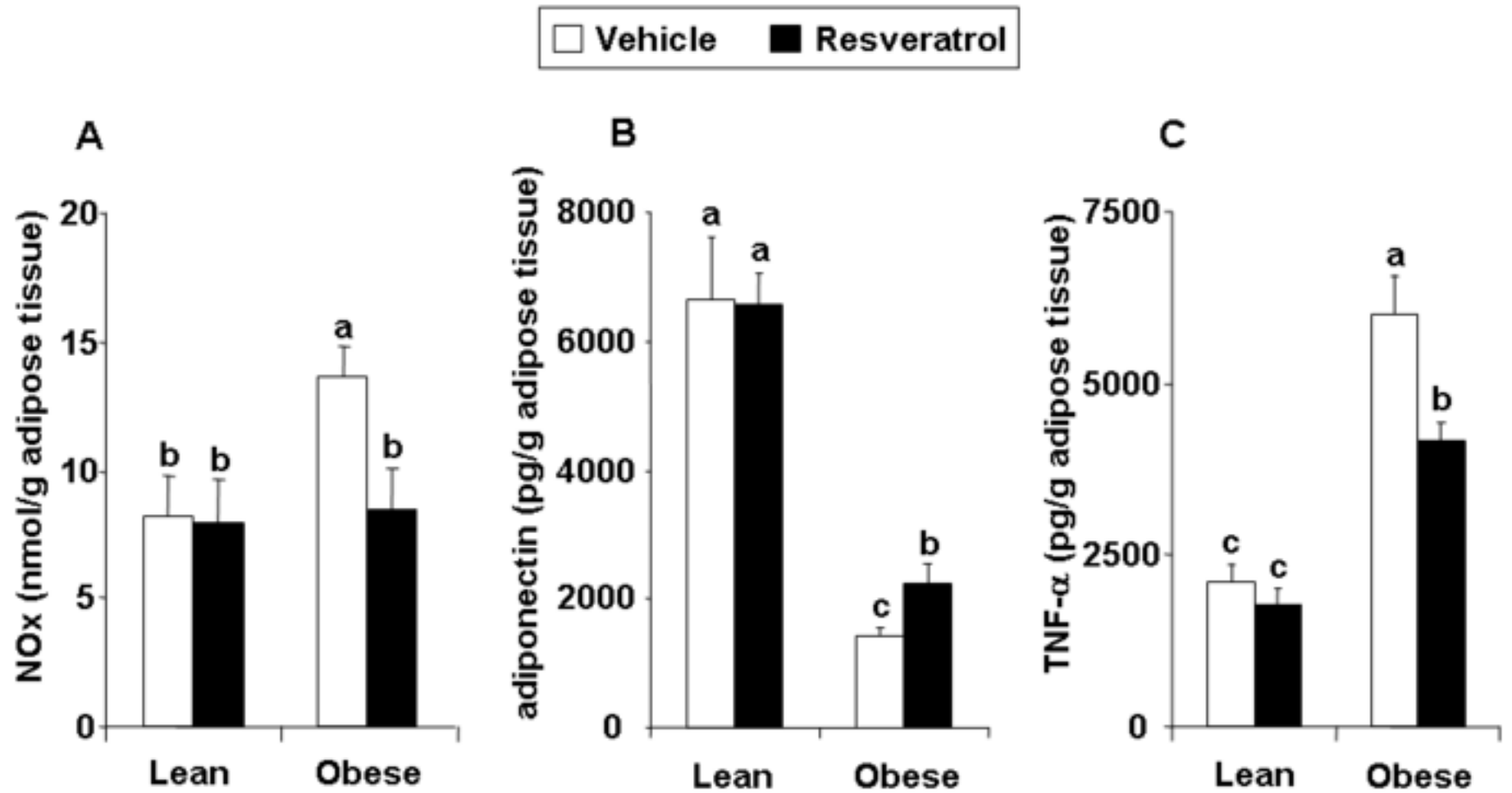


Figure 5

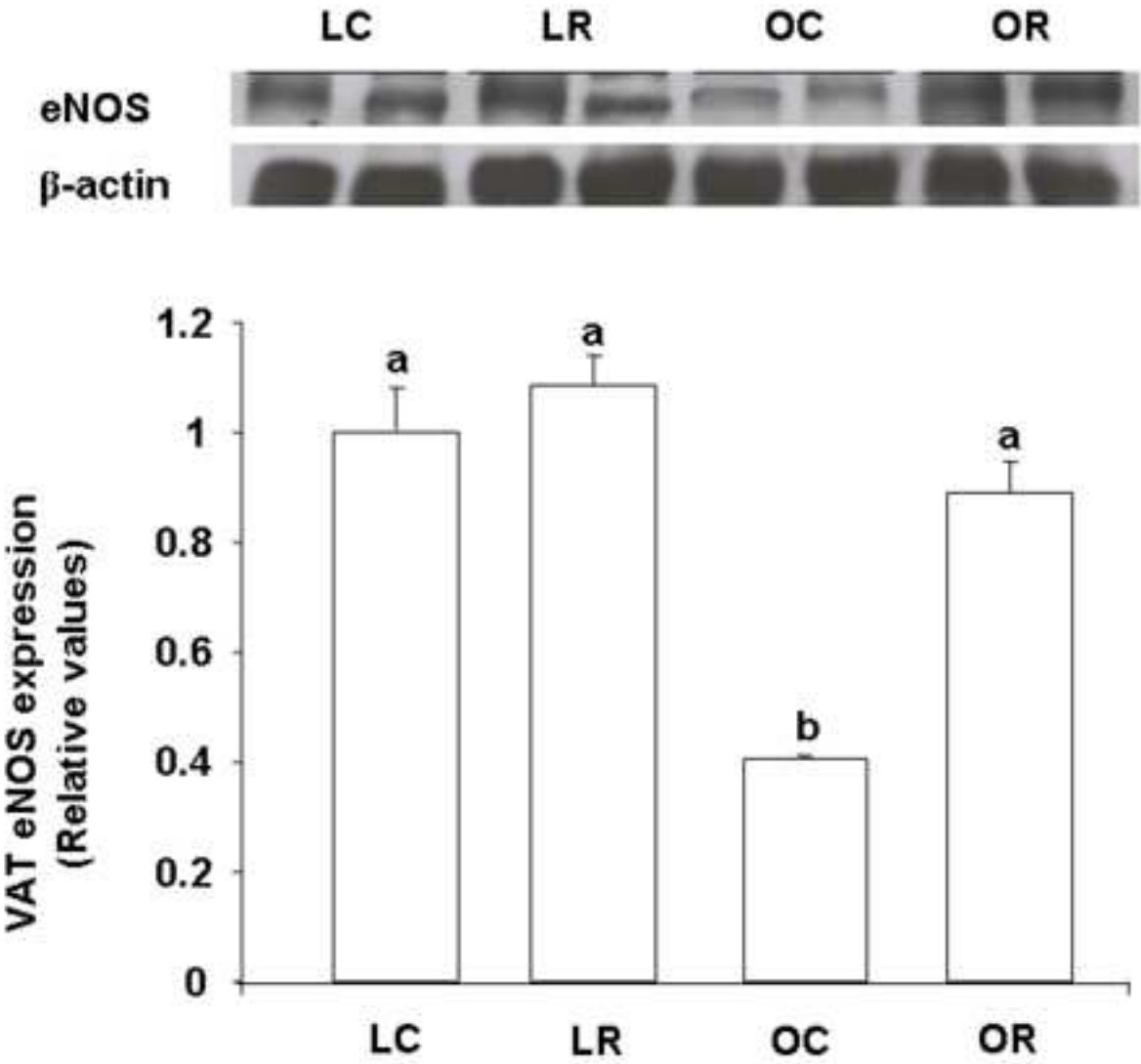


Figure 6

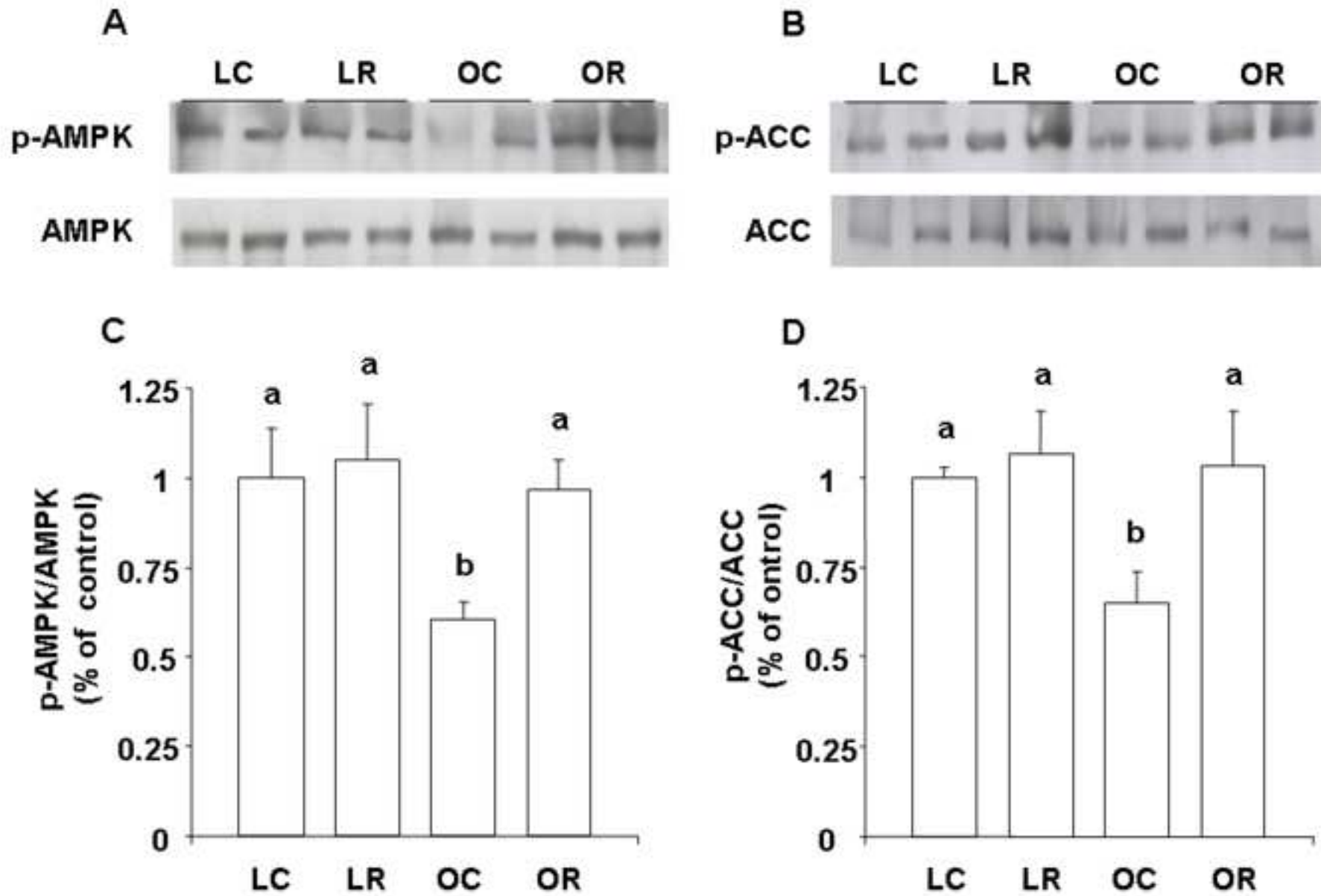


Figure 7

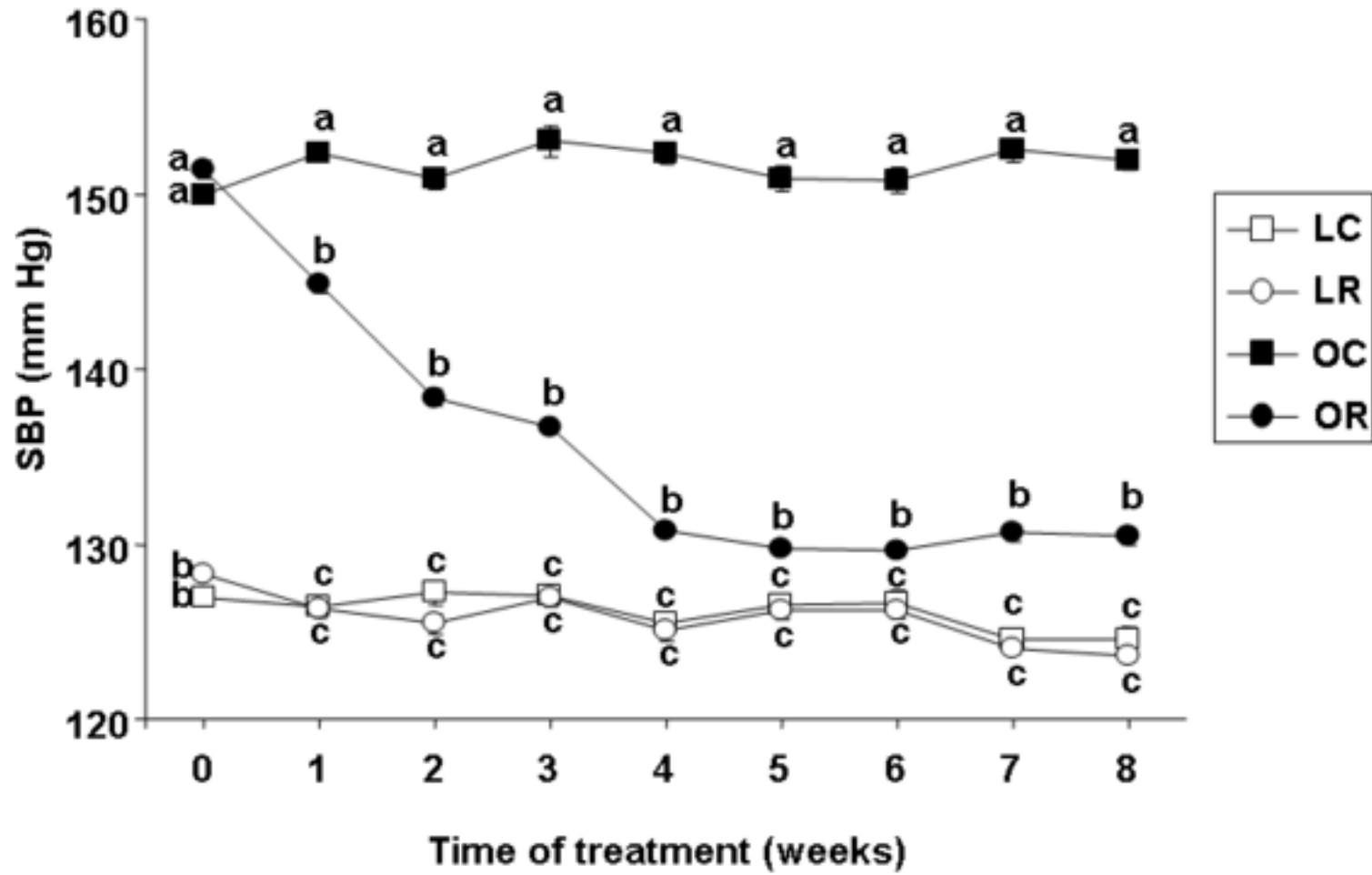


Figure 8

