



HAL
open science

Unique functions for protein kinase D1 and protein kinase D2 in mammalian cells

Sharon A Matthews, Maria N Navarro, Linda V Sinclair, Elizabeth A Emslie,
Maria Carmen Feijoo-Carnero, Doreen Cantrell

► **To cite this version:**

Sharon A Matthews, Maria N Navarro, Linda V Sinclair, Elizabeth A Emslie, Maria Carmen Feijoo-Carnero, et al.. Unique functions for protein kinase D1 and protein kinase D2 in mammalian cells. *Biochemical Journal*, 2010, 432 (1), pp.153-163. 10.1042/BJ20101188 . hal-00529110

HAL Id: hal-00529110

<https://hal.science/hal-00529110>

Submitted on 25 Oct 2010

HAL is a multi-disciplinary open access archive for the deposit and dissemination of scientific research documents, whether they are published or not. The documents may come from teaching and research institutions in France or abroad, or from public or private research centers.

L'archive ouverte pluridisciplinaire **HAL**, est destinée au dépôt et à la diffusion de documents scientifiques de niveau recherche, publiés ou non, émanant des établissements d'enseignement et de recherche français ou étrangers, des laboratoires publics ou privés.

Unique functions for Protein Kinase D1 and Protein Kinase D2 in mammalian cells

Sharon A. Matthews^{*,1}, Maria Navarro^{†,1}, Linda Sinclair[†], Elizabeth Emslie[†], Carmen Feijoo-Carnero[†] and Doreen Cantrell^{†,2}

From: * The Division of Medical Sciences, Ninewells Hospital and Medical School and
† The College of Life Sciences, Division of Immunology and Cell Biology, The University of Dundee, Dundee, Scotland, U.K.

¹ equal contributing first authors

² corresponding author:

Doreen Cantrell,
Division of Immunology and Cell Biology,
University of Dundee, Dundee, DD1 5EH, Scotland, UK.
Tel: +44 (0)1382 385047
Fax: +44 (0)1382 385783
Email: d.a.cantrell@dundee.ac.uk

Keywords

PKD, PKC; lymphocyte; TCR; cytokine

Abbreviations

PKC, Protein Kinase C; PKD, Protein Kinase D; TCR, T cell antigen receptor;

Running Title: A unique, non-redundant role for PKD2 in regulating peripheral T lymphocyte functions

Abstract

Mammalian Protein Kinase D (PKD) isoforms have been implicated in the regulation of diverse biological processes in response to diacylglycerol and Protein Kinase C (PKC) signalling. To compare the functions of PKD1 and PKD2 *in vivo* we generated mice deficient in either PKD1 or PKD2 enzymatic activity, via homozygous expression of PKD1^{Ser744Ala/Ser748Ala} or PKD2^{Ser707Ala/Ser711Ala} 'knockin' alleles. We also examined PKD2-deficient mice generated using 'gene trap' technology. We demonstrate that unlike PKD1, PKD2 catalytic activity is dispensable for normal embryogenesis. We also show that PKD2 is the major PKD isoform expressed in lymphoid tissues but that PKD2 catalytic activity is not essential for the development of mature, peripheral T and B lymphocytes. PKD2 catalytic activity is however required for efficient antigen receptor-induced cytokine production in T lymphocytes and for optimal T cell-dependent antibody responses *in vivo*. Our results reveal a key *in vivo* role for PKD2 in regulating the function of mature peripheral lymphocytes during adaptive immune responses. They also confirm the functional importance of PKC-mediated serine phosphorylation of the PKD catalytic domain for PKD activation and downstream signaling and reveal that different PKD family members have unique and non-redundant roles *in vivo*.

Introduction

The mammalian serine/threonine Protein Kinase D (PKD) family comprises three different but closely related serine kinases, PKD1, PKD2 and PKD3, all of which have a highly conserved N-terminal regulatory domain containing two cysteine-rich diacylglycerol (DAG) binding domains and an auto-inhibitory PH domain. PKD family members are activated by binding of DAG to their regulatory domain and by PKC-mediated phosphorylation of two conserved serine residues in their catalytic domain in response to phospholipase C and DAG signalling [1]. PKDs are highly conserved enzymes with PKD1 and PKD2 the most closely related of the three mammalian PKD isoforms, showing ~85% overall identity at the amino acid level. In particular their catalytic domains and their regulatory DAG binding domains, which are key for controlling the intracellular localization of these protein kinases, are highly homologous. One consequence of the high level of conservation of PKD1 and PKD2 is that it has been difficult to develop antibodies that can distinguish between these isoforms, although there are antibodies that selectively recognize PKD3. Accordingly, many studies of PKD function do not specify which PKD isoform is being studied. This is important as PKD1 and PKD2 share common regulatory mechanisms in many cell types. For example, ectopically expressed GFP-tagged PKD1 and endogenous PKD2 show identical mechanisms and kinetics of activation, inactivation and subcellular trafficking in response to antigen receptor triggering in the leukaemic T cell line, Jurkat and in A20 lymphoma B cells [2, 3].

Many adult tissues and cell lines show co-expression of the different PKD isoforms and it is evident that there can be functional redundancy between these different PKD family members. For example birds express two PKD isoforms that most closely

resemble mammalian PKD1 and PKD3 and either of these two kinases can phosphorylate and regulate the nuclear export of the class II histone deacetylases HDAC5 and HDAC7 in avian B cells [4]. Similarly, multiple PKD isoforms appear to redundantly regulate Golgi organization and protein transport [5-9]; NF κ B activation and cell survival responses [10-12] and chemokine release from toll-like receptor-activated epithelial cells [13]. Functional redundancy between different PKD isoforms has also been observed for the phosphorylation of PKD substrates such as CERT [14], PAR1b [15], sphingosine kinase 2 [16] and HSP27 [17, 18].

Functional redundancy between different PKD family members expressed in the same tissues/cells is not always the case however. For example, PKD-mediated phosphorylation of phosphatidylinositol-4 kinase III β is regulated by PKD1 and PKD2, but not by PKD3 [19]. In addition, there is differential timing of expression of PKD isoforms during early murine embryogenesis [20] and there are examples of cell types where expression of single PKD isoform appears to dominate. Consequently, specific and non-redundant roles for PKD1 in regulating insulin secretion in pancreatic β cells [21], TLR-dependent cytokine expression in macrophages [22], keratinocyte proliferation [23] and pathological cardiac remodeling *in vivo* [24] have been identified.

Our understanding of the functions of the different mammalian PKD kinases is further complicated by the observation that distinct PKD protein pools have been observed at different intracellular sites, including the plasma membrane, cytoplasm, Golgi, mitochondria, and nucleus [25]. In addition, different PKD isoforms can differentially localize within the same cell [26]. PKDs have also been shown to traffic between different cellular locations in response to specific stimuli [2, 3, 27, 28], which has major consequences for the function of these enzymes. Thus, Golgi-localised PKD regulates phosphatidylinositol 4-kinase III β phosphorylation and vesicle trafficking [19] whereas mitochondrial PKD controls expression of *SOD2* via activation of NF- κ B [29]. Similarly, plasma membrane-targeted and cytosolic PKD proteins regulate different aspects of T cell differentiation [30].

Collectively these data argue for unique functions for different PKD family members in different cellular contexts. An effective way to probe the physiological role of individual PKD isoforms is to look at the consequences of deleting the individual enzymes using gene-targeting strategies in mice. This approach has been used previously to probe the role of PKD1, revealing that homozygous germline deletion of PKD1 causes embryonic lethality [24]. Moreover, cardiomyocyte-specific deletion of PKD1 has also identified a unique and non-redundant role for PKD1 in pathological cardiac remodeling [24]. There has also been mutant mouse strain described (129S5-*Prkd3*^{Gt(OST191038)}*Lex*/Mmcd) that harbors a 'gene-trap' deletion of PKD3. The mice are reportedly viable and phenotypic analysis has revealed only a mild skeletal abnormality. To date however, there have been no studies that have explored the role of PKD2 *in vivo*, although there are several *in vitro* studies using RNAi techniques in cell lines that have proposed important non-redundant

functions for PKD2. These include a key role for PKD2 in endothelial cells, to control cell proliferation and survival and to promote angiogenesis [31] and in monocytes, to control migratory responses [32]. Accordingly, the object of the present study was to produce mouse models that would allow an exploration of the role of PKD2 in physiological responses during embryogenesis and in adult mice.

The data show that mice deficient in PKD2 enzymatic activity were born at normal Mendelian frequency and were fertile and healthy. Strikingly, we observed that PKD2 but not PKD1 is selectively expressed in lymphoid cells in adult mice but that the loss of PKD2 catalytic activity had no obvious effect on the development of mature T and B lymphocytes. PKD2 catalytic function was however important for effector cytokine production after T cell antigen receptor engagement and also for optimal induction of antibody responses to a model antigen. The data reveal that PKD1 but not PKD2 catalytic activity is essential for normal embryo development but that PKD2, but not PKD1, has an important role in adult mice to control the function of lymphoid cells during adaptive immune responses.

Materials and Methods

Generation of PKD2 and PKD1 transgenic mice

PKD2 knockin mice on a C57BL/6 background were generated by Ozgene (Bentley Dc, Australia). Briefly, genomic fragments containing exons 15-17 of the *Prkd2* gene were amplified by PCR from C57BL/6 genomic DNA to generate 5' and 3' homology arms that were used to flank a loxP-PGK-*Neo*^R-LoxP selection cassette. Mutations (underlined) within the 5' homology arm that encoded for alanine point mutations at serine residues 707 and 711 (GAG AAG GCC TTC CGG CGC GCC GTG) were introduced by PCR. Forward and reverse DNA sequencing and restriction enzyme digests confirmed the integrity of the final targeting construct. Following homologous recombination of the targeting vector in C57BL/6 embryonic stem (ES) cells, correctly targeted clones were identified by Southern blot analysis. The integrity of the Ser707 and Ser711 knock-in point mutations in the targeted ES cells was confirmed by PCR screening and DNA sequencing. Targeted ES cell clones were microinjected into C57BL/6 blastocysts to generate chimeric animals. After establishment of germline transmission, the PGK-*Neo*^R cassette was deleted by breeding to a transgenic line containing Cre recombinase inserted into the Rosa26 locus (OZ Cre deleter mice). Selective breeding was used to eliminate the Cre gene and PKD2^{SSAA} knock-in mice were maintained on a pure C57BL/6 genetic background. Genotyping was carried out by PCR of genomic DNA using primers 671-5'armF (5'AGTGGCACGTTCCCCTTCAATG) and 671-3'armR (5'CTTTGCCCAATCCCTTACAGCCT), producing products of 236 bp (PKD2^{WT}) and 344 bp (PKD2^{SSAA}).

A similar methodology was followed to generate PKD1^{SSAA} knock-in mice except that nucleotides encoding serine residues 744 and 748 were mutated to alanine (GCC TTT AGG AGG GCC). Genotyping was carried out by PCR of genomic DNA using primers 579-5'armF2 (5' CAGCCTTCATGTATCCACCCAACC) and 579-3'armR (5' TGAACAACAGCAGAGCCCTAACAG), producing products of 512 bp (PKD1^{WT}) and 649

bp (PKD1^{SSAA}).

Generation of PKD2 gene-trap mutant mice

PKD2-deficient mice were generated by a retrovirus-based gene trap technique. An E14Tg2a.4 ES cell line (derived from the 129/OlaHsd mouse strain) containing a gene-trap cassette inserted into the *Prkd2* locus (RRJ380, Bay Genomics) was injected into C57Bl/6J blastocysts, which were subsequently implanted into recipient female mice. The ES cells were subject to DNA sequence analysis prior to microinjection to confirm that the cell line contained only a single GeneTrap cassette, located within the *PKD2* locus. The resulting chimeric mice were bred into a C57BL/6 background to obtain germ-line transmission. Genotyping of PKD2 gene-trap mice was carried out by PCR of genomic DNA using primers PKD2-GTF6 (5' GTTCCCCTTCCAGTCCATAATCCTCCT), PKD2-GTR2 (5' CGATGATGCGAGCGAAGCCAAA) and B-geo5'R2 (5' TGCCAGTTTGGAGGGGACGACGACA) in a single PCR reaction, producing products of 498 bp (PKD2^{GT}) and 441 bp (PKD2^{WT}). All experiments on mice were conducted in a mixed 129-C57BL/6J background.

All mice were bred and maintained under specific pathogen-free conditions in the Wellcome Trust Biocenter at the University of Dundee in compliance with United Kingdom Home Office Animals (Scientific Procedures) Act 1986 guidelines.

Cell culture

Spleens, thymi and lymph nodes were removed from 2- to 4-month-old mice, mashed in cell strainers, and disaggregated, and red blood cells were lysed as required before the lymphocytes were suspended in RPMI 1640 medium containing L-glutamine (Invitrogen) with 10% heat-inactivated fetal calf serum, penicillin-streptomycin, and 50 μ M β -mercaptoethanol. The cells were activated with either 200nM phorbol 12,13-dibutyrate (P;PdBu), with 2 μ M OVA peptide (SIINFELK) or with the indicated concentrations of anti-CD3 ϵ antibody (clone 2C11), as indicated in the text, at a density of approximately 1-2 x 10⁶ cells/ml.

Western blot analysis

Protein expression and phosphorylation was assessed using standard Western blotting protocols. Briefly, cell lysates (20 million cells or 100 μ g tissue per ml of lysis buffer) were prepared on ice using NP-40 lysis buffer (50 mM HEPES [pH 7.4], 75 mM NaCl, 1% NP-40, 10 mM sodium fluoride, 10 mM iodoacetamide, 1 mM EDTA, 40 mM β -glycerophosphate, protease inhibitors, 1 mM phenylmethylsulfonyl fluoride) and then centrifuged at 16,000 x *g* for 10 min at 4°C. Protein samples (0.25 to 0.5 million cell equivalents or 40 μ g tissue extract) were separated by electrophoresis through 8% or 4-12% sodium dodecyl sulfate-polyacrylamide gels, transferred to PVDF membranes, and blocked with 5% milk fat in PBS-Tween 20. Blots were probed with antibodies recognizing various phosphorylated and non-phosphorylated (total) proteins, as indicated in the text.

Immunoprecipitation and In vitro kinase assays

Endogenous PKD isoforms were immunoprecipitated from cell lysates with either a PKD1/2 cross-reacting antibody [34] or with a PKD3 specific antibody [35] and recovered with protein A-sepharose beads. Exogenous substrate phosphorylation by immunoprecipitated PKD proteins was measured by the incorporation of [γ - 32 P]-ATP into a synthetic PKD substrate peptide (KKLNRTLVA), as previously described [33].

Flow cytometry

Unless otherwise stated, antibodies conjugated to fluorescein isothiocyanate (FITC), phycoerythrin (PE), PE-Cy5.5, PE-Cy7 or allophycocyanin (APC) were from BD Pharmingen or eBioscience. Cells were stained for the surface expression of the following antigens (clones are in parentheses): CD4 (RM4-5), CD8 (53-6.7), TCR- β (H57-597), B220 (RA3-6B2), IgD (11-26) and IgM (11/41). Double-negative (DN) and double-positive (DP) thymocytes were defined by CD8 and CD4 staining. Mature SP thymocytes were defined as TCR β^{Hi} and positive for CD4 or CD8 expression. Where required, Fc receptors were blocked with mouse Fc block (CD16/CD32; Fc γ III/II receptor; 2.4G2) (BD Pharmingen). Cells were stained with saturating concentrations of antibody in accordance with the manufacturer's instructions and were washed and resuspended in RPMI 1640-1% fetal bovine serum (FBS) prior to acquisition. Live cells were gated according to their forward scatter and side scatter. Data were acquired on a FACSCalibur (Becton Dickinson) flow cytometer and analyzed using FlowJo software (Treestar).

Cytokine enzyme-linked immunosorbent assay

Lymph nodes were harvested and disaggregated. CD4 and CD8 T cells were purified by negative selection using CD4+ T Cell Isolation Kit or CD8+ T Cell Isolation Kit (Miltenyi Biotec) by magnetic cell sorting (AutoMacs, Miltenyi Biotec). Cells were stimulated with different amounts of anti-CD3 ϵ (clone 2C11). After 18 h, supernatants were collected and cytokine production was determined by ELISA using Mouse INF γ "Femto-HS"-ELISA Ready-Set-Go and Mouse IL2-ELISA Ready-Set-Go kits (eBiosciences), according to the manufacturer's instructions.

Immunization and immunoglobulin enzyme-linked immunosorbent assay (ELISA)

Sex- and age-matched mice 8–12 weeks of age were immunized subcutaneously with 100 μ g of NP-OVA (Biosearch Technologies) pre-absorbed to aluminum hydroxide (Pierce). Sera were collected after 0, 8, 14 and 29 days. Total and NP-specific immunoglobulin (Ig) levels were determined by standard enzyme-linked immunosorbent assay using plate bound anti-mouse Ig (H+L chain) or NP-BSA₃₃ and isotype-specific alkaline phosphatase-conjugated goat anti-mouse antibodies (SouthernBiotech). The reaction was revealed with p-nitrophenyl phosphate (pNPP; Sigma), followed by OD reading at 405 nm. Purified Ig isotype standards were used to quantify specific Ig levels.

Statistical analysis

Statistical analyses were performed using GraphPad Prism 5.00 for Macintosh (GraphPad Software). *P* values <0.05 was considered to be statistically significant.

Results

PKD1 but not PKD2 plays an important role in murine embryogenesis

PKD serine kinases are large proteins comprising multiple interaction domains, including both protein-protein and protein-lipid binding regions, and have the potential to function as scaffolds. To explore the physiological role of PKD2 *in vivo* we therefore decided to produce mice where wild-type PKD2 alleles were substituted with mutant alleles encoding for alanine substitutions at Serine 707 and Serine 711 in the PKD catalytic domain activation loop region. Phosphorylation of these two serine residues is critical for PKD2 catalytic activity [36], hence studies of PKD2^{SSAA} mice allows an assessment of the importance of PKD2 catalytic activity *in vivo* while bypassing any impact of removing the scaffold function of PKD2. Accordingly, PKD2 Ser707→Ala and Ser711→Ala mutations were knocked into the wild-type *Prkd2* locus in mouse embryonic stem (ES) cells by homologous recombination. The resulting ES cells were used to derive mice expressing PKD2^{SSAA} under the control of its natural promoter (Figure 1). Previous data has shown that homozygous deletion of PKD1 alleles causes embryonic lethality [24]. In striking contrast, homozygous PKD2^{SSAA} knockin mice were viable, fertile and were phenotypically indistinguishable from their wild-type littermates (Figure 1C and data not shown). This suggests that normal embryonic development is not perturbed by the loss of PKD2 catalytic function.

We considered the possibility that the small amount of residual catalytic activity still present in the PKD2^{SSAA} mutant protein (see Figure 4A) might be sufficient to permit normal embryogenesis. Therefore, to validate our hypothesis, we generated two additional PKD mutant mouse models: one where wild-type PKD1 alleles were substituted with mutant PKD1 alleles lacking the critical PKC-dependent serine phosphorylation sites, Ser744 and Ser748 (Figure 2A). We also generated PKD2-deficient mice (PKD2^{GT} mice) using an ES cell line containing a gene-trap cassette inserted into the *Prkd2* locus (Figure 2C). Our DNA sequence analysis of this ES cell line confirmed that the cell line contained only a single gene-trap cassette, located within the *PKD2* locus. We mapped the gene-trap insertion site to intron 15, which disrupts and eliminates the catalytic domain of PKD2 (Figure 2C). Importantly, PKD2^{GT/GT} mice were born at the normal expected frequency (Figure 2E) and were viable, fertile and phenotypically indistinguishable from their wild-type littermates. In contrast, when heterozygous PKD1^{SSAA} mice were inter-crossed, wild-type and heterozygous newborns but not homozygous PKD1^{SSAA} mice were easily identified (Figure 2E). Of the 177 observed live births, two mice were homozygous for the PKD1^{SSAA} allele (~1%). This indicates that homozygous expression of the PKD1^{SSAA} allele causes embryonic lethality with incomplete penetrance. This is consistent with the report by Olson and colleagues that deletion of exons 12-14 of PKD1, which eliminates the PKD1 catalytic domain, also causes embryonic lethality with incomplete penetrance [24]. Analysis of the stage of embryogenesis that required

PKD1 catalytic activity revealed that normal Mendelian frequencies of homozygous PKD1^{SSAA} fetuses could be identified before day 9.5 of embryogenesis but not later (Figure 2E). Hence the majority of embryos with homozygous substitutions for PKD1^{SSAA} alleles perish early in development. Collectively, these results demonstrate that the catalytic activity of PKD1, but not PKD2, is essential for normal mouse embryogenesis.

PKD1 and PKD2 expression patterns in adult mice

Analysis of EST/gene expression databases indicates that many adult tissues show co-expression of different PKD isoforms at the mRNA level (Figure 3A). However, the relative expression of specific PKD isoforms at the protein level in different tissues and cells is not well defined. In the context of PKD1 and PKD2, which are highly homologous, most antibodies generated against these kinases cannot discriminate between the two isoforms. For example, the most commonly used 'pan' PKD antisera used to detect PKD1 in variety of tissues was raised against the peptide sequence EEREMKALSERSVIL (corresponding to amino acids 904-918 in murine PKD1) but reacts equally well with PKD2. In SDS-PAGE analysis it is theoretically possible to discriminate PKD1 and PKD2 on the basis of subtle differences in their electrophoretic mobility [10]. However, because the electrophoretic mobility of PKD isoforms can be altered by protein phosphorylation [37] it is not possible to use differential migration on SDS-PAGE gels as a reliable criterion to distinguish PKD1 versus PKD2 expression.

In this respect, the exons encoding the region of the protein recognized by the 'pan' PKD antisera will not be expressed in PKD2^{GT/GT} mice. Accordingly, western blot analysis with the pan PKD antisera of tissues from wild-type versus PKD2^{GT/GT} mice will allow an assessment of which adult tissues express PKD1 and PKD2. Western blot analysis of lymphoid tissue extracts from PKD2^{GT/GT} mice, notably the thymus (Figure 3B), lymph nodes and spleen (Figure 3C), reveal that these tissues do not contain any protein reactive with the pan PKD1/2 antisera, indicating that T and B lymphocytes, which comprise the majority of cells within these tissues, specifically express PKD2 but not PKD1. In contrast, deletion of PKD2 causes little or no loss of total PKD1/2 protein in the brain or the pancreas but reduces overall PKD1/2 proteins levels in heart and kidney (Figure 3C). Hence PKD1 and PKD2 are co-expressed in many adult tissues, albeit at differing levels, but one exception is in lymphoid cells, which appear to only express PKD2.

PKD2 is the major PKD isoform expressed in murine lymphocytes

The data suggesting that PKD2, but not PKD1, is selectively expressed in lymphoid cells in adult mice was confirmed by *in vitro* kinase assays, comparing total PKD1/2 catalytic activity in wild-type and PKD2^{GT/GT} thymocytes. Here, substantial peptide substrate phosphorylation was detected in PKD1/2 immunoprecipitates prepared from phorbol ester-activated wild-type thymocytes but not in those prepared from PKD2^{GT/GT} thymocytes (Figure 4A). Another well-characterized marker of endogenous PKD1/PKD2 catalytic activity is the phosphorylation status of a conserved C-terminal autophosphorylation site (Ser916 in PKD1; Ser873 in PKD2).

As shown in Figure 4B, phorbol ester-activated wild-type, but not PKD2^{GT/GT}, thymocytes contain active autophosphorylated PKD1/2 proteins.

We also examined total PKD1/2 catalytic activity in the PKD2^{SSAA} knockin lymphocytes. There was no loss of PKD2 protein expression in homozygous PKD2^{SSAA} lymphocytes but total PKD1/2 catalytic activity was severely impaired, as assessed by *in vitro* kinase assays of PKD2 proteins immunoprecipitated from phorbol ester-stimulated wild-type versus PKD2^{SSAA/SSAA} thymocytes (Figure 4A). Moreover, PKD2^{SSAA} mutant proteins could not effectively autophosphorylate on Ser873 in response to phorbol ester stimulation (Figure 4B). We did however detect a small amount of residual PKD1/2 catalytic activity in activated PKD2^{SSAA/SSAA} thymocytes compared to PKD2^{GT/GT} thymocytes. As lymphoid cells do not express PKD1 (above), low levels of PKD2 catalytic activity can apparently be induced in PKD2^{SSAA} mutant thymocytes independently of PKC-mediated phosphorylation of the PKD2 catalytic domain.

Strikingly, we observed that while phorbol ester-treatment induced significant PKD activation loop phosphorylation in wild-type lymphocytes, this was undetectable in whole cell extracts prepared from phorbol ester-stimulated PKD2^{SSAA/SSAA} or PKD2^{GT/GT} lymphocytes, despite normal induction of Erk1/2 phosphorylation (Figure 4C). This was surprising as PKD is expressed in mammalian lymphocytes ([35] and Figure 4E) and the PKD activation loop segment is fully conserved in all three mammalian PKD isoforms. Hence PKD 'activation loop' phospho-specific antibodies should cross-react equally with PKD1 (phosphorylated on Ser744/Ser748), PKD2 (phosphorylated on Ser707/Ser711) and PKD3 (phosphorylated on Ser730/Ser734). To clarify whether the PKD activation loop phosphospecific antibody could indeed detect active, phosphorylated PKD3 proteins we analysed avian DT40 B lymphocytes, which are known to express PKD3 and PKD1 at approximately equimolar levels, but which do not express PKD2 [4]. The data in Figure 4D show that deletion of PKD1 in DT40 B lymphocytes results in a complete loss of PKD1 Ser916 phosphorylation, but only a 2-3 fold reduction in total PKD activation loop phosphorylation levels, after phorbol ester stimulation. Similarly, in PKD3^{-/-} DT40 cells there was no change in PKD1 Ser916 phosphorylation and again only a 2-3 fold reduction in PKD activation loop phosphorylation levels after phorbol ester stimulation (Figure 4D). Thus, PKD activation loop phosphospecific antibodies can very efficiently detect active, phosphorylated PKD3 in cells that express high PKD3 protein levels. Indeed, when we immunoprecipitated PKD3 proteins from phorbol ester-activated PKD2^{GT/GT} thymocytes we were now able to detect PKD3 activation loop phosphorylation (Figure 4E). Accordingly, the failure to detect any PKD activation loop phosphorylation in whole cell extracts prepared from PKD2 mutant lymphocytes argues that PKD3 does not make a large quantitative contribution to the total PKD protein pool in murine lymphoid cells/tissues.

Although PKD3 protein expression is very low in murine lymphocytes it was important to assess whether the loss of PKD2 catalytic activity had any impact on

PKD3 expression or activity. We therefore immunoprecipitated PKD3 from control and phorbol ester stimulated, wild-type and PKD2 mutant thymocytes. In these experiments we found that PKD3 expression levels and catalytic activity were normal in wild-type, PKD2^{GT/GT} and PKD2^{SSAA/SSAA} thymocytes (Figure 4F). Thus, the loss of PKD2 expression and or catalytic activity in lymphoid cells is not compensated for by increased expression/activity of other PKD isoforms. Nor is there any evidence that expression of a catalytically inactive PKD2 has any 'dominant negative' effect on PKD3 expression or activity.

PKD2 is dispensable for the development of mature T lymphocytes

Since PKD2 is the major PKD isoform expressed in the thymus and in mature T lymphocytes (data not shown) we asked whether PKD2 catalytic function is essential for normal T lymphocyte development. Previous studies have shown that PKD can be activated by the pre-T cell antigen receptor in T progenitors in the thymus and by the mature α/β TCR complex in peripheral T cells. To date experiments exploring the consequence of PKD activity for T cell antigen receptor function have used transgenesis techniques to target an activated PKD mutant protein (comprising the catalytic domain of PKD1) to either to the membrane or cytosol of pre-T cells. These experiments demonstrate that constitutively active PKD signalling can substitute for the preTCR to drive T cell proliferation and differentiation in recombinae gene null mice [30]. However, experiments with such gain of function mutants can inform about the functional capacity of a protein kinase but they do not assess whether the kinase is essential for a particular biological process.

We therefore investigated T cell development in PKD2^{GT/GT} and PKD2^{SSAA/SSAA} mice using flow cytometry to define the major thymic and peripheral T cell subpopulations. Early T lymphocyte progenitors in the thymus are double negative (DN) for the major histocompatibility complex (MHC) receptors CD4 and CD8. These DN progenitors undergo TCR β locus rearrangements to produce a TCR β polypeptide that permits surface expression of the pre-TCR complex. The pre-TCR then supports the survival and rapid clonal expansion of DN progenitors along with their differentiation into CD4⁺CD8⁺ double positive (DP) thymocytes. TCR α -chain gene rearrangements then occur and cells that express a functional but non self-reactive α/β T cell antigen receptor (TCR) complex differentiate into either CD4⁺ or CD8⁺ single positive (SP) T lymphocytes. Thymi from PKD2^{SSAA/SSAA} and PKD2^{GT/GT} mice did not display any obvious abnormalities and contained normal numbers of DN, DP and mature SP thymocytes that express high levels of the mature α/β TCR complex (Figure 5A and 5B). Moreover, these mature SP thymocytes were able to exit the thymus and populate peripheral tissues normally since the frequencies and total numbers of peripheral CD4⁺ and CD8⁺ T lymphocytes in the lymph nodes and spleen of wild-type, PKD2^{SSAA/SSAA} and PKD2^{GT/GT} mice were comparable (Figure 5C and 5D; data not shown). Similarly, B lymphocyte development within the bone marrow occurred normally in the absence of PKD2 catalytic activity (data not shown), resulting in normal total numbers of mature IgM/IgD-expressing B

lymphocytes in the spleens and lymph nodes of PKD2^{SSAA/SSAA} and PKD2^{GT/GT} mice (Figure 5C and 5D; data not shown). Thus, PKD2 kinase activity is dispensable for the normal development of mature, peripheral T and B lymphocytes.

PKD2 catalytic activity is important for mature, peripheral T lymphocytes

The next question addressed was whether or not PKD2 has any role in peripheral T cells. As shown in Figure 6A, T cell antigen receptor engagement induces robust and sustained phosphorylation of PKD2 on Ser707/Ser711 and correspondingly increases PKD2 catalytic activity, resulting in increased autophosphorylation on Ser873. It is well established that phosphorylation of Ser707/Ser711 within the PKD2 catalytic domain is mediated by Protein Kinase Cs [36]. In this context, PKC isoforms that have been implicated in the regulation of PKD activation loop phosphorylation and activation in response to antigen receptor ligation include PKC δ in B lymphocytes [38] and a redundant role for PKC α and PKC θ in T lymphocytes (G. Baier, personal communication). It is also known that PKC enzymes have a key role in T lymphocytes to control expression of cytokine genes in TCR triggered cells [39-41]. It has also been reported that PKD2 can activate reporter constructs for the cytokine Interleukin 2 (IL-2) in the T leukaemic cell line Jurkat [42]. We therefore asked whether PKD2 catalytic activity is required to support normal lymphocyte activation responses.

We initially compared the proliferative responses of wild-type and PKD2^{SSAA/SSAA} lymphocytes. However, we observed no major differences in the proliferative capability of PKD2 mutant lymphocytes compared to wild-type controls after *in vitro* stimulation of the T cell antigen receptor (data not shown). However, it was striking that the ability of both CD4 and CD8 T cells to produce the effector cytokines interleukin 2 (IL-2) and interferon gamma (IFN γ) was severely attenuated in PKD2^{SSAA/SSAA} T lymphocytes that had been stimulated *in vitro* via the T cell antigen receptor (Figure 6B). Thus, PKD2 catalytic activity is required for efficient antigen receptor-induced cytokine production in mature peripheral T lymphocytes.

We further explored the *in vivo* function of PKD2 catalytic activity by looking at the ability of PKD2 mutant mice to mount an immune response to a model antigen. We immunized control and PKD2^{SSAA/SSAA} mice with NP-OVA, an antigen that elicits antibody production in a T cell-dependent fashion. At different time points after immunization, the serum levels of antigen-specific immunoglobulins were determined by enzyme-linked immunosorbent assay. As shown in Figure 7A, baseline serum immunoglobulin titers were normal in PKD2^{SSAA/SSAA} mice. However, PKD2^{SSAA/SSAA} mice showed reduced antigen-specific IgM and IgG₁ responses compared to those of wild-type mice (Figure 7B). Thus, PKD2 catalytic activity is important for optimal T cell-dependent antibody responses *in vivo*.

Discussion

To explore the role of PKD1 and PKD2 *in vivo* we have generated mice in which wild-type PKD1 and PKD2 alleles were replaced with mutants with alanine

substitutions at the residues Ser744/Ser748 and Ser707/Ser711 respectively. These serine residues are located within the PKD catalytic domains and *in vitro* studies have shown that they are phosphorylated by classical/novel PKC isoforms, thereby activating PKD catalytic activity [36, 43]. The importance of these phosphorylation events for PKD regulation *in vivo* was not known. However, the inability of the PKD1^{SSAA/SSAA} mutant to support embryo development now shows that phosphorylation of Ser744/Ser748 is essential for PKD1 function *in vivo*. The data also show that PKD1 and PKD2 isoforms have unique functions *in vivo*: loss of PKD1 expression [24] or catalytic function (herein) results in early embryonic lethality. In contrast, the loss of PKD2 expression or catalytic function *in vivo* has no impact on normal embryonic development. Moreover, adult mice in which wild-type PKD2 alleles are deleted or substituted with catalytically inactive PKD2 mutants are viable and fertile.

A major aim of our study was to explore whether there is any unique role for PKD2 *in vivo*. A striking finding in the present study is our discovery that PKD2 is the major PKD isoform expressed in murine T and B lymphocytes: PKD1 is not expressed in these cells, while PKD3 is apparently expressed only very low levels in primary murine lymphoid cells. Moreover, PKD2 catalytic activity was important for effector cytokine production after T cell antigen receptor engagement. PKD2 was also important for optimal induction of antibody responses to a model antigen. PKD2 thus has a unique role in adult mice to control the function of lymphoid cells.

PKDs are highly conserved enzymes but the evolution of multiple isoforms seems to be associated with evolution of vertebrates, hence amphibians/fish/birds express two PKD isoforms whereas mammals express three PKD family members. The invertebrate PKD found in *Drosophila* is most closely homologous to the mammalian PKD3 isoform; the second PKD isoform found in fish and amphibians most closely resembles PKD1; in contrast PKD2 appears to have evolved with mammals. The present data show that there is differential expression of PKD isoforms in different tissues, in particular the unique expression of PKD2 in primary and secondary lymphoid tissues. Exactly what cellular mechanisms control the differential expression levels of different PKD isoforms in different tissues and at different stages of development remains unclear. Why lymphocytes would express PKD2 rather than PKD1 when they have shared substrate specificities and are regulated by identical intracellular signaling mechanisms is also unclear. Nevertheless, the failure of T cells to express PKD1 allows PKD2 to have a unique non-redundant role in T cells to mediate TCR induced production of the essential cytokines IL-2 and IFN γ .

The induction of IL-2 and IFN γ production in response to T cell antigen receptor engagement is mediated by diacylglycerol signaling pathways and Protein Kinase Cs; notably PKC α and PKC θ [39-41]. *In vitro* studies have also shown that several different PKC isoforms can phosphorylate Ser707 and Ser711 in PKD2, thereby activating the kinase [36] but the importance of this pathway for PKD regulation *in*

in vivo was not previously known. The failure of PKD2^{SSAA/SSAA} T cell lymphocytes to effectively produce IL-2 and IFN γ thus reveals that PKD functions downstream of PKCs to control cytokine production in T cells. The cytokines IL-2 and IFN γ play a critical role in adaptive immune responses and the present data thus also provide evidence that PKD2 has a unique non-redundant role to control T cell functions during adaptive immune responses. A role for PKD2 in mammalian adaptive immune responses is intriguing because DKF-2, a *C. elegans* PKD acts downstream of diacylglycerol and PKCs to regulate innate immunity in the nematode [44]. The participation of PKDs in the mechanisms that control immune responses is therefore a conserved one.

In summary our *in vivo* data confirm the functional importance of the PKC-mediated serine phosphorylation sites located within the PKD catalytic domain for PKD1 and PKD2 activation and downstream signaling. They also provide further evidence that PKD kinases may act as downstream effectors of DAG-regulated PKC enzymes *in vivo*.

Acknowledgements

This project was supported by a Wellcome Trust Principal Research Fellowship (D.C.) and Program Grant no. 065975/Z/01/A. We thank members of the Biological Services Resource Unit for mouse care and members of the Cantrell laboratory for the critical reading of the manuscript.

References

- 1 Rozengurt, E., Rey, O. and Waldron, R. T. (2005) Protein kinase D signaling. *J Biol Chem.* **280**, 13205-13208
- 2 Spitaler, M., Emslie, E., Wood, C. D. and Cantrell, D. (2006) Diacylglycerol and protein kinase D localization during T lymphocyte activation. *Immunity.* **24**, 535-546
- 3 Matthews, S. A., Iglesias, T., Rozengurt, E. and Cantrell, D. (2000) Spatial and temporal regulation of protein kinase D (PKD). *Embo J.* **19**, 2935-2945
- 4 Matthews, S. A., Liu, P., Spitaler, M., Olson, E. N., McKinsey, T. A., Cantrell, D. A. and Scharenberg, A. M. (2006) Essential role for protein kinase D family kinases in the regulation of class II histone deacetylases in B lymphocytes. *Mol Cell Biol.* **26**, 1569-1577
- 5 Bossard, C., Bresson, D., Polishchuk, R. S. and Malhotra, V. (2007) Dimeric PKD regulates membrane fission to form transport carriers at the TGN. *J Cell Biol.* **179**, 1123-1131
- 6 Li, J., O'Connor, K. L., Hellmich, M. R., Greeley, G. H., Jr., Townsend, C. M., Jr. and Evers, B. M. (2004) The role of protein kinase D in neurotensin secretion mediated by protein kinase C- α / δ and Rho/Rho kinase. *J Biol Chem.* **279**, 28466-28474
- 7 von Wichert, G., Edenfeld, T., von Blume, J., Krisp, H., Krndija, D., Schmid, H., Oswald, F., Lothar, U., Walther, P., Adler, G. and Seufferlein, T. (2008) Protein

- kinase D2 regulates chromogranin A secretion in human BON neuroendocrine tumour cells. *Cell Signal*. **20**, 925-934
- 8 Yeaman, C., Ayala, M. I., Wright, J. R., Bard, F., Bossard, C., Ang, A., Maeda, Y., Seufferlein, T., Mellman, I., Nelson, W. J. and Malhotra, V. (2004) Protein kinase D regulates basolateral membrane protein exit from trans-Golgi network. *Nat Cell Biol*. **6**, 106-112
- 9 Li, J., Chen, L. A., Townsend, C. M., Jr. and Evers, B. M. (2008) PKD1, PKD2, and their substrate Kidins220 regulate neurotensin secretion in the BON human endocrine cell line. *J Biol Chem*. **283**, 2614-2621
- 10 Mihailovic, T., Marx, M., Auer, A., Van Lint, J., Schmid, M., Weber, C. and Seufferlein, T. (2004) Protein kinase D2 mediates activation of nuclear factor kappaB by Bcr-Abl in Bcr-Abl+ human myeloid leukemia cells. *Cancer Res*. **64**, 8939-8944
- 11 Storz, P., Doppler, H. and Toker, A. (2004) Protein kinase D selectively regulates protein kinase D-dependent activation of NF-kappaB in oxidative stress signaling. *Mol Cell Biol*. **24**, 2614-2626
- 12 Storz, P. and Toker, A. (2003) Protein kinase D mediates a stress-induced NF-kappaB activation and survival pathway. *Embo J*. **22**, 109-120
- 13 Steiner, T. S., Ivison, S. M., Yao, Y. and Kifayet, A. (2010) Protein kinase D1 and D2 are involved in chemokine release induced by toll-like receptors 2, 4, and 5. *Cell Immunol*
- 14 Fugmann, T., Hausser, A., Schoffler, P., Schmid, S., Pfizenmaier, K. and Olayioye, M. A. (2007) Regulation of secretory transport by protein kinase D-mediated phosphorylation of the ceramide transfer protein. *J Cell Biol*. **178**, 15-22
- 15 Watkins, J. L., Lewandowski, K. T., Meek, S. E., Storz, P., Toker, A. and Piwnicka-Worms, H. (2008) Phosphorylation of the Par-1 polarity kinase by protein kinase D regulates 14-3-3 binding and membrane association. *Proc Natl Acad Sci U S A*. **105**, 18378-18383
- 16 Ding, G., Sonoda, H., Yu, H., Kajimoto, T., Goparaju, S. K., Jahangeer, S., Okada, T. and Nakamura, S. (2007) Protein kinase D-mediated phosphorylation and nuclear export of sphingosine kinase 2. *J Biol Chem*. **282**, 27493-27502
- 17 Liu, P., Scharenberg, A. M., Cantrell, D. A. and Matthews, S. A. (2007) Protein kinase D enzymes are dispensable for proliferation, survival and antigen receptor-regulated NFkappaB activity in vertebrate B-cells. *FEBS Lett*. **581**, 1377-1382
- 18 Yuan, J. and Rozengurt, E. (2008) PKD, PKD2, and p38 MAPK mediate Hsp27 serine-82 phosphorylation induced by neurotensin in pancreatic cancer PANC-1 cells. *J Cell Biochem*. **103**, 648-662
- 19 Hausser, A., Storz, P., Martens, S., Link, G., Toker, A. and Pfizenmaier, K. (2005) Protein kinase D regulates vesicular transport by phosphorylating and activating phosphatidylinositol-4 kinase IIIbeta at the Golgi complex. *Nat Cell Biol*
- 20 Oster, H., Abraham, D. and Leitges, M. (2006) Expression of the protein kinase D (PKD) family during mouse embryogenesis. *Gene Expr Patterns*. **6**, 400-408
- 21 Sumara, G., Formentini, I., Collins, S., Sumara, I., Windak, R., Bodenmiller, B., Ramracheya, R., Caille, D., Jiang, H., Platt, K. A., Meda, P., Aebersold, R., Rorsman, P. and Ricci, R. (2009) Regulation of PKD by the MAPK p38delta in insulin secretion and glucose homeostasis. *Cell*. **136**, 235-248

- 22 Park, J. E., Kim, Y. I. and Yi, A. K. (2009) Protein kinase D1 is essential for MyD88-dependent TLR signaling pathway. *J Immunol.* **182**, 6316-6327
- 23 Jadali, A. and Ghazizadeh, S. (2010) Protein kinase D is implicated in the reversible commitment to differentiation in primary cultures of mouse keratinocytes. *J Biol Chem.* **285**, 23387-23397
- 24 Fielitz, J., Kim, M. S., Shelton, J. M., Qi, X., Hill, J. A., Richardson, J. A., Bassel-Duby, R. and Olson, E. N. (2008) Requirement of protein kinase D1 for pathological cardiac remodeling. *Proc Natl Acad Sci U S A.* **105**, 3059-3063
- 25 Wang, Q. J. (2006) PKD at the crossroads of DAG and PKC signaling. *Trends Pharmacol Sci.* **27**, 317-323
- 26 Rey, O., Yuan, J., Young, S. H. and Rozengurt, E. (2003) Protein kinase C α /protein kinase D3 nuclear localization, catalytic activation, and intracellular redistribution in response to G protein-coupled receptor agonists. *J Biol Chem.* **278**, 23773-23785
- 27 Oancea, E. and Meyer, T. (1998) Protein kinase C as a molecular machine for decoding calcium and diacylglycerol signals. *Cell.* **95**, 307-318
- 28 Rey, O., Sinnett-Smith, J., Zhukova, E. and Rozengurt, E. (2001) Regulated nucleocytoplasmic transport of protein kinase D in response to G protein-coupled receptor activation. *J Biol Chem.* **276**, 49228-49235
- 29 Storz, P., Doppler, H. and Toker, A. (2005) Protein kinase D mediates mitochondrion-to-nucleus signaling and detoxification from mitochondrial reactive oxygen species. *Mol Cell Biol.* **25**, 8520-8530
- 30 Marklund, U., Lightfoot, K. and Cantrell, D. (2003) Intracellular location and cell context-dependent function of protein kinase D. *Immunity.* **19**, 491-501
- 31 Hao, Q., Wang, L., Zhao, Z. J. and Tang, H. (2009) Identification of protein kinase D2 as a pivotal regulator of endothelial cell proliferation, migration, and angiogenesis. *J Biol Chem.* **284**, 799-806
- 32 Tan, M., Hao, F., Xu, X., Chisolm, G. M. and Cui, M. Z. (2009) Lysophosphatidylcholine activates a novel PKD2-mediated signaling pathway that controls monocyte migration. *Arterioscler Thromb Vasc Biol.* **29**, 1376-1382
- 33 Matthews, S. A., Rozengurt, E. and Cantrell, D. (2000) Protein kinase D. A selective target for antigen receptors and a downstream target for protein kinase C in lymphocytes. *J Exp Med.* **191**, 2075-2082
- 34 Van Lint, J. V., Sinnett-Smith, J. and Rozengurt, E. (1995) Expression and characterization of PKD, a phorbol ester and diacylglycerol-stimulated serine protein kinase. *J Biol Chem.* **270**, 1455-1461
- 35 Matthews, S. A., Dayalu, R., Thompson, L. J. and Scharenberg, A. M. (2003) Regulation of protein kinase C α by the B-cell antigen receptor. *J Biol Chem.* **278**, 9086-9091
- 36 Sturany, S., Van Lint, J., Gilchrist, A., Vandenheede, J. R., Adler, G. and Seufferlein, T. (2002) Mechanism of activation of protein kinase D2 (PKD2) by the CCK(B)/gastrin receptor. *J Biol Chem.* **277**, 29431-29436
- 37 Matthews, S. A., Rozengurt, E. and Cantrell, D. (1999) Characterization of serine 916 as an in vivo autophosphorylation site for protein kinase D/Protein kinase C α . *J Biol Chem.* **274**, 26543-26549

- 38 Pracht, C., Minguet, S., Leitges, M., Reth, M. and Huber, M. (2006) Association of protein kinase C-delta with the B cell antigen receptor complex. *Cell Signal*
- 39 Pfeifhofer, C., Kofler, K., Gruber, T., Tabrizi, N. G., Lutz, C., Maly, K., Leitges, M. and Baier, G. (2003) Protein kinase C theta affects Ca²⁺ mobilization and NFAT cell activation in primary mouse T cells. *J Exp Med.* **197**, 1525-1535
- 40 Pfeifhofer, C., Gruber, T., Letschka, T., Thuille, N., Lutz-Nicoladoni, C., Hermann-Kleiter, N., Braun, U., Leitges, M. and Baier, G. (2006) Defective IgG2a/2b class switching in PKC alpha^{-/-} mice. *J Immunol.* **176**, 6004-6011
- 41 Gruber, T., Hermann-Kleiter, N., Pfeifhofer-Obermair, C., Lutz-Nicoladoni, C., Thuille, N., Letschka, T., Barsig, J., Baudler, M., Li, J., Metzler, B., Nusslein-Hildesheim, B., Wagner, J., Leitges, M. and Baier, G. (2009) PKC theta cooperates with PKC alpha in alloimmune responses of T cells in vivo. *Mol Immunol.* **46**, 2071-2079
- 42 Irie, A., Harada, K., Tsukamoto, H., Kim, J. R., Araki, N. and Nishimura, Y. (2006) Protein kinase D2 contributes to either IL-2 promoter regulation or induction of cell death upon TCR stimulation depending on its activity in Jurkat cells. *Int Immunol*
- 43 Iglesias, T., Waldron, R. T. and Rozengurt, E. (1998) Identification of in vivo phosphorylation sites required for protein kinase D activation. *J Biol Chem.* **273**, 27662-27667
- 44 Ren, M., Feng, H., Fu, Y., Land, M. and Rubin, C. S. (2009) Protein kinase D is an essential regulator of *C. elegans* innate immunity. *Immunity.* **30**, 521-532

Figure legends

Figure 1. Generation of mice with a knockin PKD2 mutation. (A) Diagram depicting the endogenous mouse *Prkd2* allele containing exons 10-18, the knockin construct and the targeted allele with the neomycin cassette removed by *Cre* recombinase. The black/grey rectangles represent exons and the blackarrow heads represent *LoxP* sites. Black lines indicate the positions of the probes used for Southern analysis. The knock-in allele containing the Ser707/Ser711 mutation in exon 16 is illustrated as a grey rectangle. (B) Genotypes of PKD2^{SSAA} mutant mice were determined by PCR amplification of genomic DNA. The wild-type allele generates a 236 bp product while the knock-in allele generates a 344 bp product. The larger knock-in allele product is due to the presence of the 108 bp *LoxP* site and flanking region, which remains in an intronic region following *Cre*-mediated excision of the neomycin selection cassette. (C) Heterozygous matings for PKD2^{SSAA} mice were set up and the progeny were genotyped as described in the methods. The number (and percentage) of each genotype observed followed by its expected Mendelian frequency. $P = 0.482$ (Chi-squared test).

Figure 2. Generation of PKD2 genetrapp mutant mice and PKD1 knockin mutant mice. (A) Diagram depicting the endogenous mouse *Prkd1* allele containing exons 15-17, the knockin construct and the targeted allele with the neomycin cassette removed by *Cre* recombinase. The white/grey rectangles represent exons and the blackarrow heads represent *LoxP* sites. Black lines indicate the positions of the probes used for

Southern analysis. The knock-in allele containing the Ser744/Ser7148 mutation in exon 16 is illustrated as a grey rectangle. (B) PKD1^{SSAA} knockin mice were genotyped by PCR amplification of genomic DNA over the LoxP insertion site as described in the methods. (C) Diagram depicting the wild-type *Prkd2* allele and the genetrapped *Prkd2* allele present in the E14Tg2a.4 ES cell line (Bay Genomics). This insertion disrupts the catalytic domain structure and deletes several key motifs that are important for catalysis and substrate binding (the DFG and APE motifs) as well as the Ser707 and Ser711 phosphorylation sites that are important for PKD2 activation. (D) PKD2^{GT} mice were genotyped by PCR amplification of genomic DNA as described in the methods. (E) Heterozygous matings for PKD2^{GT} mice and for PKD1^{SSAA} mice were set up and the live progeny and PKD1^{SSAA} knockin embryos were genotyped as described in the methods. The number (and percentage) of each genotype observed is shown, followed by its expected Mendelian frequency. The data was analysed using a Chi-squared test to analyse statistical significance.

Figure 3. Differential expression of PKD1 and PKD2 isoforms in adult tissues. (A) *Prkd1*, *Prkd2* and *Prkd3* gene expression analysis in adult murine tissues. Messenger RNA expression data in the GeneAtlas MOE430 (gcrma) data set was downloaded from the BioGPS gene portal hub (www.biogps.gnf.org) and expressed as the fold change in expression in the indicated tissues, compared to that expressed in NIH 3T3 cells. (B) Western blot analysis of PKD1, PKD2 and Akt expression in wild-type versus PKD2^{GT/GT} thymocytes. Data are representative of >3 separate experiments. (C) Western blot analysis of PKD1, PKD2 and Akt expression in wild-type versus PKD2^{GT/GT} adult tissues. Data are shown from two separate PKD2^{SSAA/SSAA} mice and their wild-type littermates. Closed arrowhead indicates PKD2; open arrowhead indicates PKD1.

Figure 4. PKD2 is the dominant PKD isoform expressed in murine lymphoid tissue and cells. (A) Global PKD1/2 catalytic activity in wild-type and PKD2 mutant thymocytes. PKD1/2 proteins were immunoprecipitated from phorbol ester activated thymocytes using a pan-PKD1/2 antibody [34] before PKD catalytic activity was measured in *in vitro* peptide substrate kinases assays, as described in the methods. Data are from 8 wild-type, 8 PKD2^{GT/GT} and 6 PKD2^{SSAA/SSAA} thymi, assayed in three separate experiments. Error bars indicate mean±SEM; statistical significance was calculated by a Student's *t* test. (B) PKD1/2 autophosphorylation on Ser916 and Ser873, respectively, in whole cell extracts prepared from control and phorbol ester activated wild-type, heterozygous and homozygous PKD2^{GT} and PKD2^{SSAA} thymocytes. Data are representative of 2 independent experiments. (C) Analysis of PKD activation loop and Erk1/2 phosphorylation in whole cell extracts prepared from wild-type, PKD2^{GT/GT} and PKD2^{SSAA/SSAA} splenocytes activated with phorbol ester for 15 min. Similar results were observed in phorbol ester-activated thymocytes. (D) PKD activation loop and Ser916 phosphorylation in wild-type, PKD1^{-/-} and PKD3^{-/-} DT40 B cells activated with phorbol ester for 15 min. (E) Analysis of PKD activation loop phosphorylation in PKD3 immunoprecipitates prepared from untreated and phorbol ester-activated wild-type and PKD2^{GT/GT} thymocytes. (F) PKD3 expression and catalytic activity in primary wild-type and

homozygous PKD2^{GT} and PKD2^{SSAA} lymphoid cells. PKD3 proteins were immunoprecipitated from phorbol ester activated thymocytes using a PKD3-isoform specific antibody [35] before PKD3 catalytic activity was measured in *in vitro* peptide substrate kinases assays, as described in the methods. Data are from 4-6 wildtype, PKD2^{GT/GT} and PKD2^{SSAA/SSAA} thymi, assayed in three separate experiments. Error bars indicate mean±SEM and a Student's *t* test was used to calculate statistical significance.

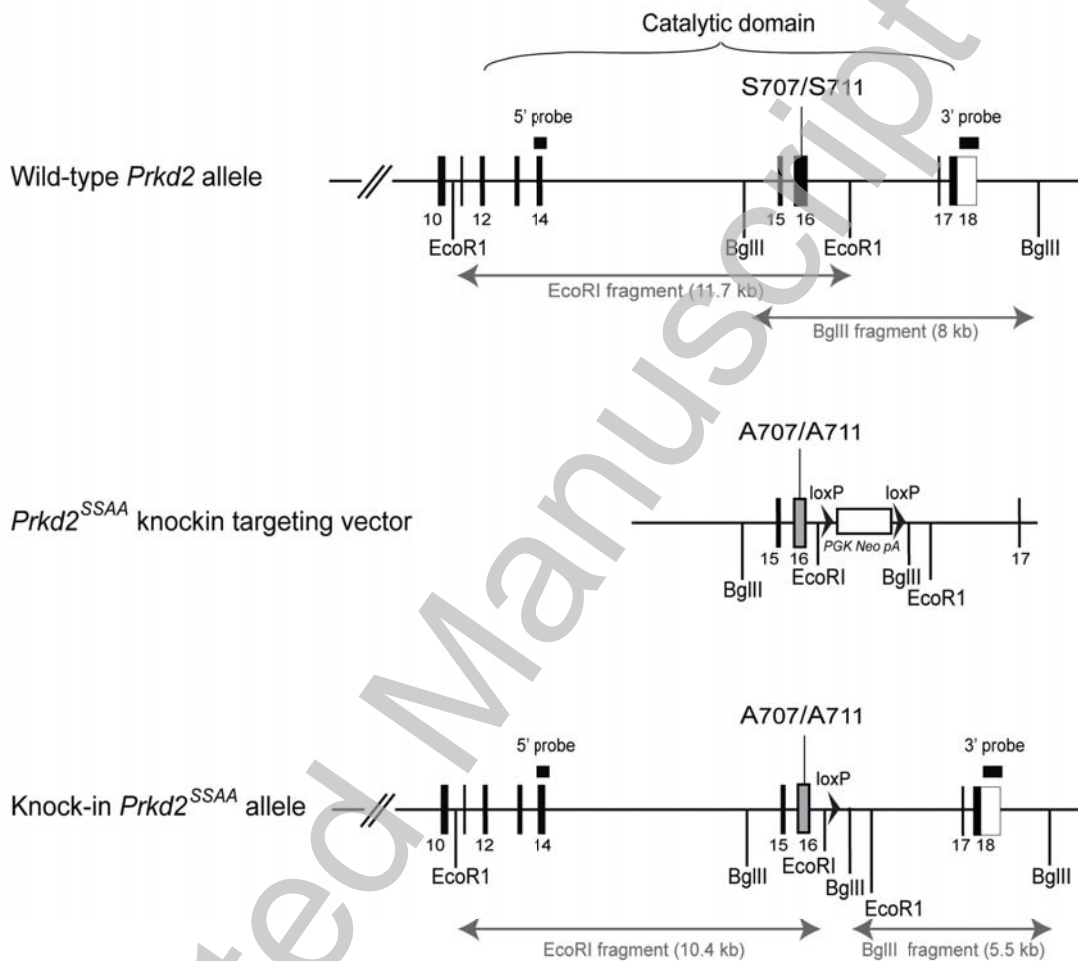
Figure 5. PKD2 is dispensable for development of mature T and B lymphocytes. Expression of CD4/CD8 DP and SP subsets in thymi from wild-type versus PKD2^{GT/GT} (A) or wild-type versus PKD2^{SSAA/SSAA} mice (B). Analysis of peripheral T cell (TCRβ⁺CD4⁺ and TCRβ⁺CD8⁺) and B cell (B220⁺IgM^{lo/+}IgD^{lo/+}) subsets in spleens from wild-type versus PKD2^{GT/GT} (C) or wild-type versus PKD2^{SSAA/SSAA} mice (D). Tissues from the PKD2 mutant mice and wild-type littermate controls were harvested at 8-12 weeks, stained with specific antibodies and analyzed by flow cytometry as described in the methods. Graphs represent cell number x10⁶ of the different cell subsets. Error bars indicate mean±SEM, (n= ≥7 mice).

Figure 6. PKD2 catalytic activity is important for peripheral T lymphocyte function. (A) CD8⁺ naïve T cells were purified from OTI-TCR transgenic lymph node cells and *in vitro* stimulated with specific OVA peptide. At different time points, cells were lysed and protein phosphorylation and expression was assessed by western blotting. (B) CD4⁺ and CD8⁺ naïve T cells were separately purified from wild-type, PKD2^{SSAA/SSAA} and PKD2^{GT/GT} lymph nodes and *in vitro* stimulated via the T cell antigen receptor for 18 hr with increasing concentrations of an anti-CD3ε monoclonal antibody. IL-2 and IFNγ levels in the culture supernatant were determined by ELISA. Error bars indicate mean±SEM of triplicate samples and are representative of 2 separate experiments.

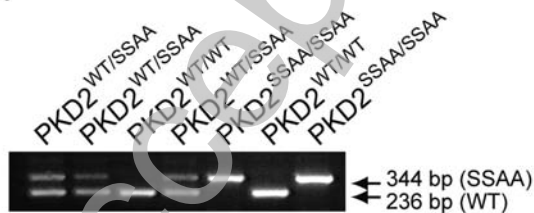
Figure 7. PKD2 catalytic activity is important for efficient humoral immune responses against T cell dependent antigens. (A) ELISA of basal serum Ig levels in control and PKD2^{SSAA} knockin mice. Error bars indicate mean±SEM (n=4 mice per genotype). (B) PKD2^{SSAA/SSAA} and PKD2^{WT/WT} mice were immunized with NP-OVA on day 0. Serum anti-NP IgM and IgG₁ levels were determined on days 8, 14 and 29 after immunization by ELISA of serial dilutions of serum. Error bars indicate mean±SEM (N=4 mice per genotype); statistical significance was calculated by Two-way ANOVA, *P*=0.001 (***) and *P*=0.081 for NP-specific IgM and NP-specific IgG₁ levels, respectively. Data are representative of two independent experiments.

Matthews et al Figure 1

A.



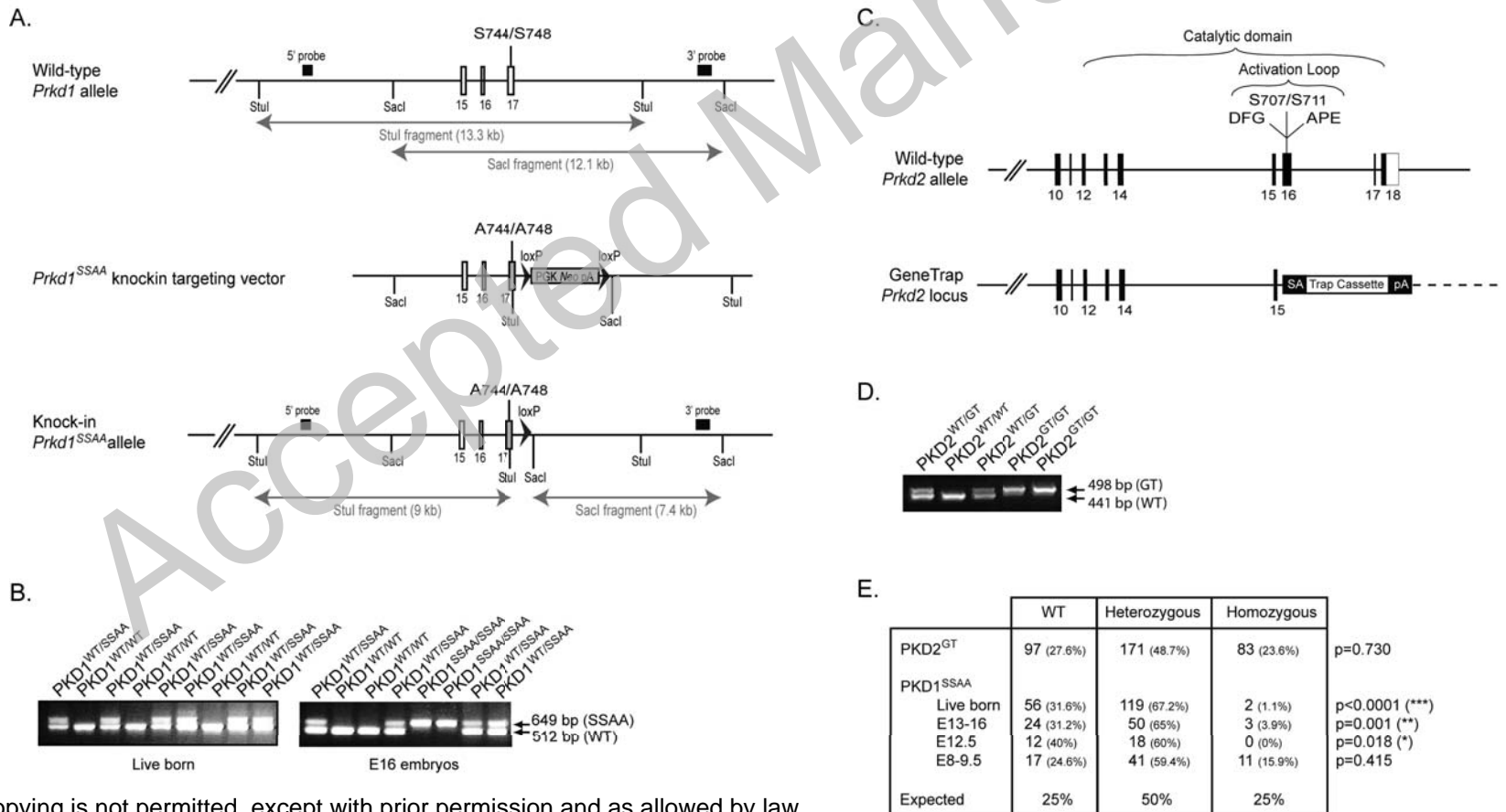
B.



C.

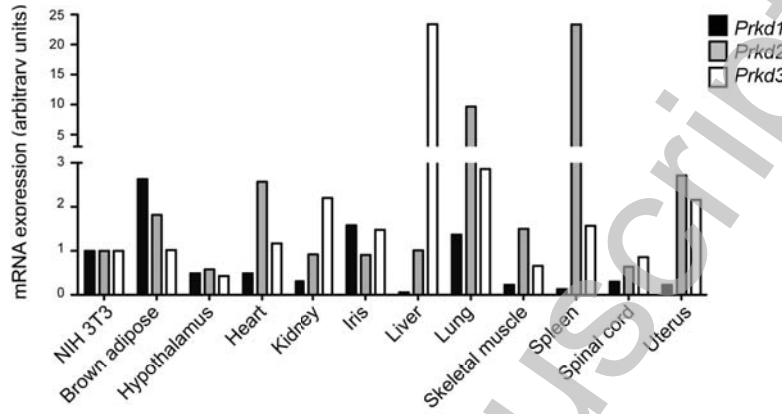
| | PKD2 ^{WT/WT} | PKD2 ^{WT/SSAA} | PKD2 ^{SSAA/SSAA} |
|----------|-----------------------|-------------------------|---------------------------|
| Observed | 59 (29.8%) | 98 (49.5%) | 41 (20.7%) |
| Expected | 25% | 50% | 25% |

Matthews et al Figure 2

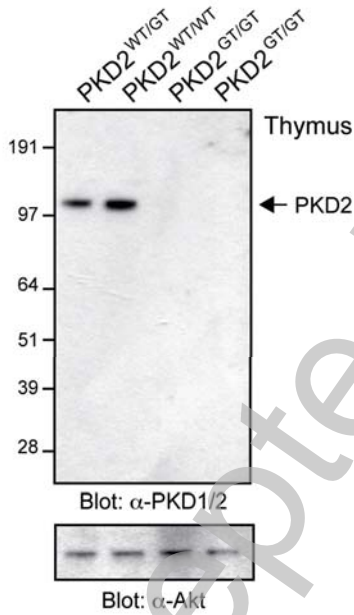


Matthews et al Figure 3

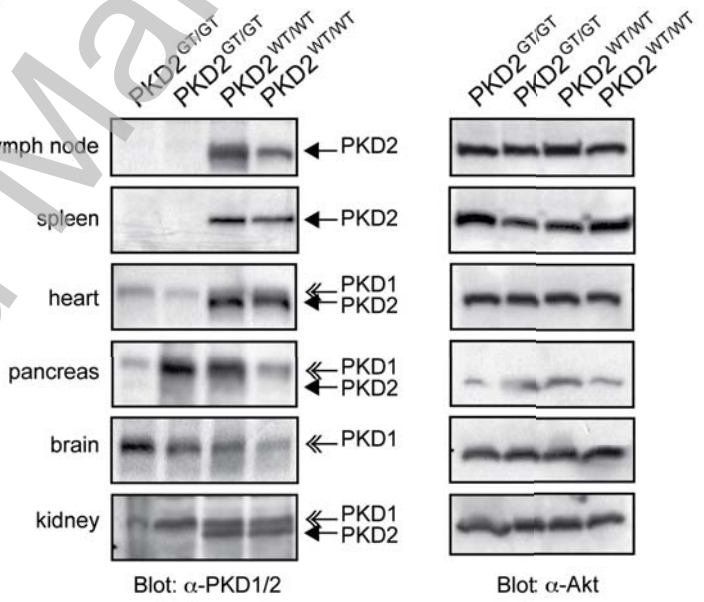
A.



B.



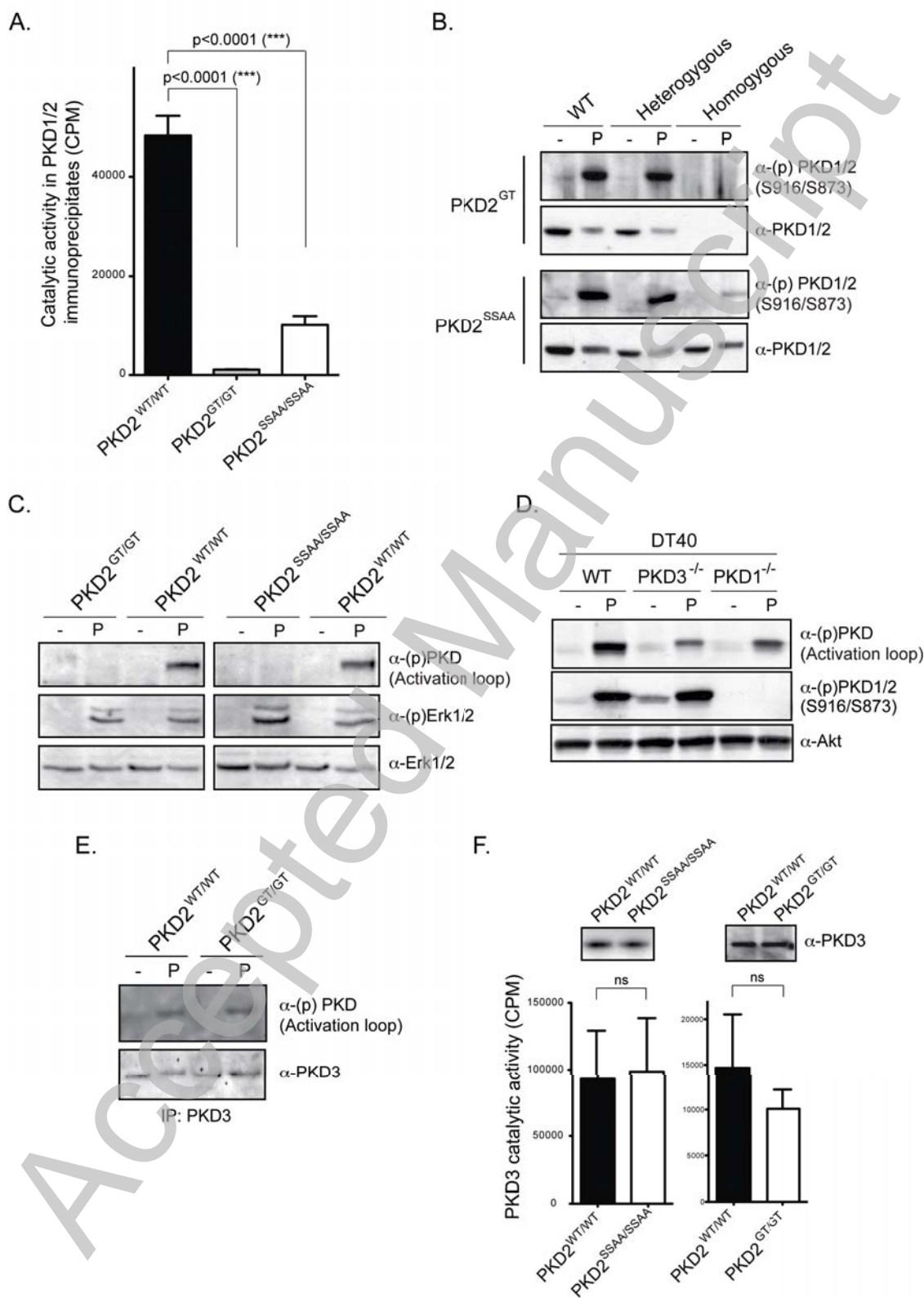
C.



THIS IS NOT THE VERSION OF RECORD - see doi:10.1042/BJ20101188

Accepted Manuscript

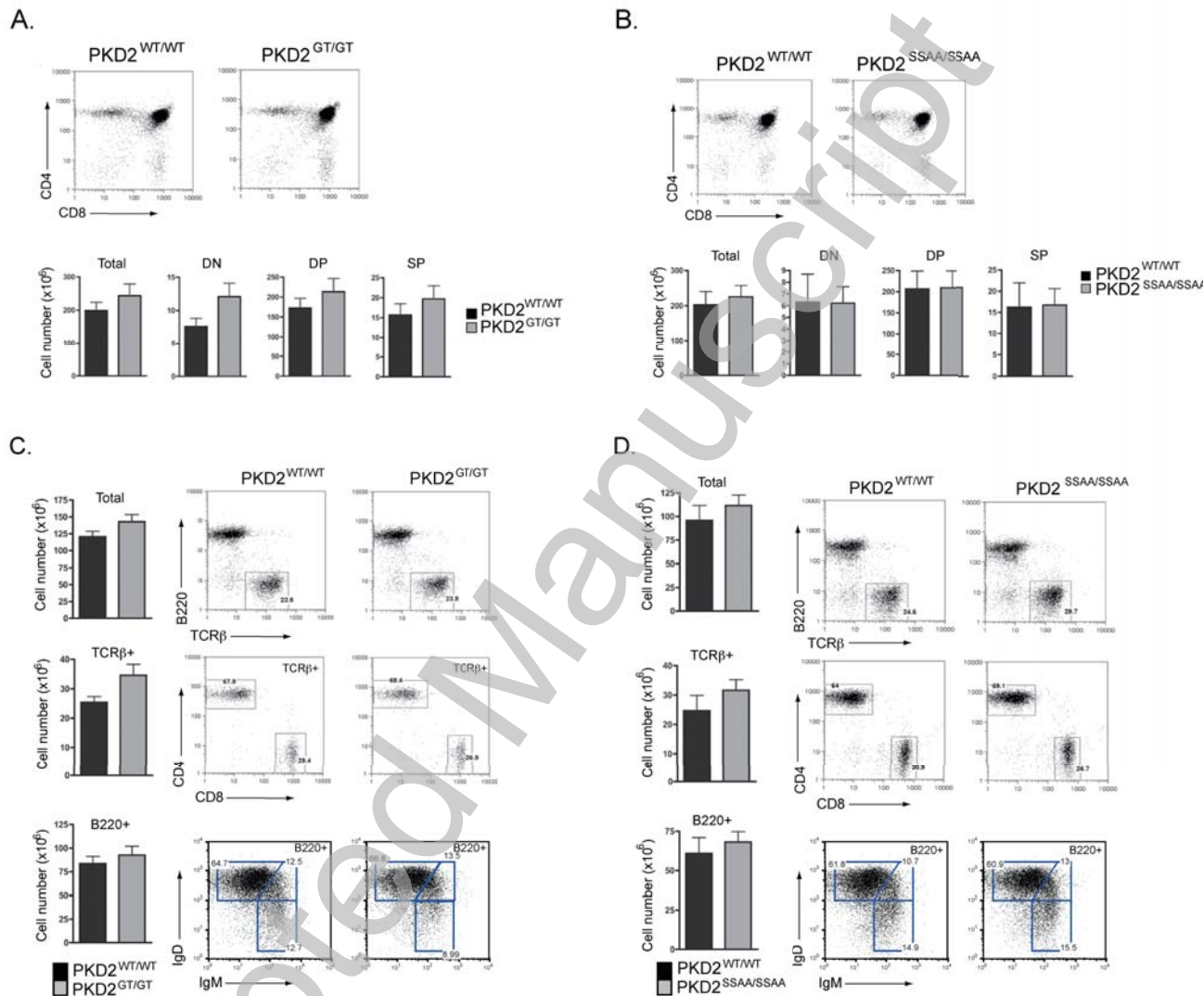
Matthews et al Figure 4



THIS IS NOT THE VERSION OF RECORD - see doi:10.1042/BJ20101188

ACCEPTED MANUSCRIPT

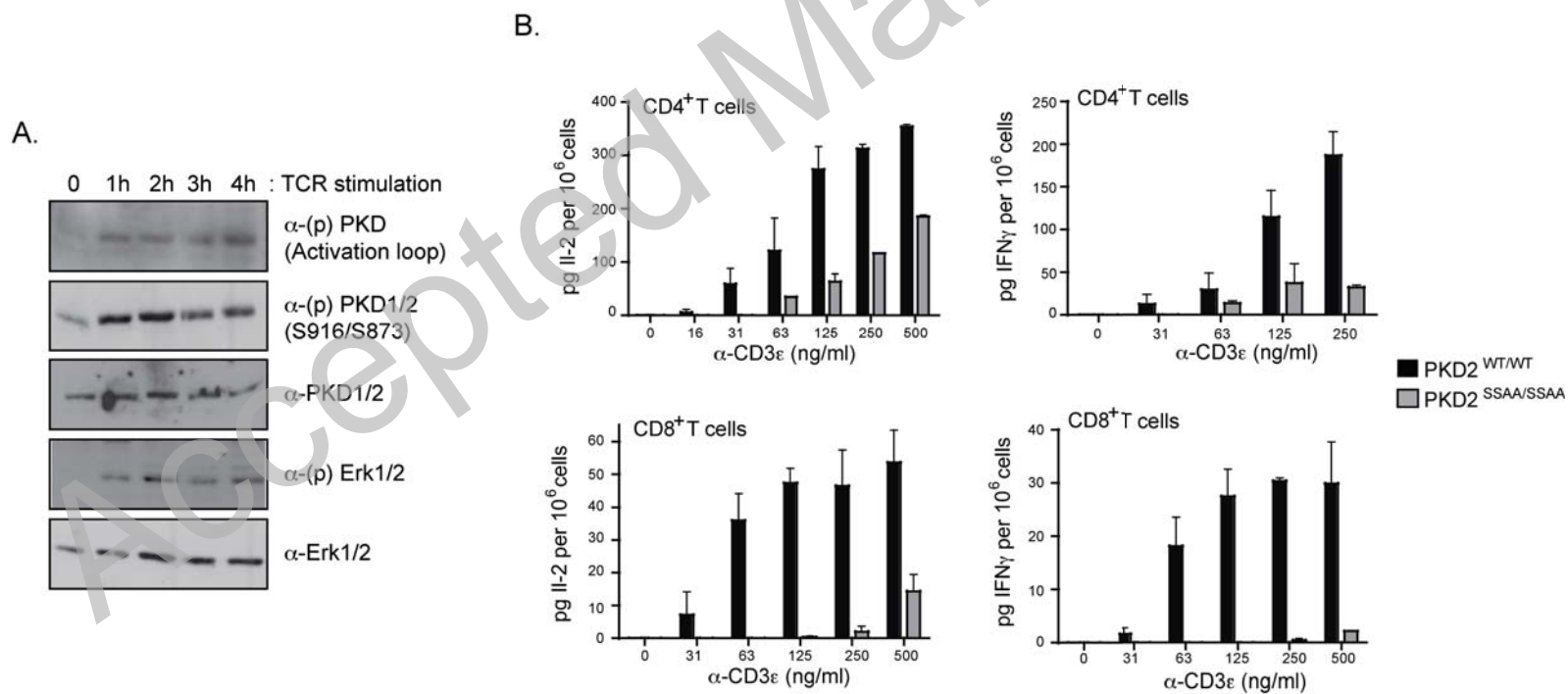
Matthews et al Figure 5



THIS IS NOT THE VERSION OF RECORD - see doi:10.1042/BJJ20101188

Accepted Manuscript

Matthews et al Figure 6



Matthews et al Figure 7

