



HAL
open science

The Microscopic Origin of the Macroscopic Dielectric Permittivity of Crystals: A Mathematical Viewpoint

Eric Cancès, Mathieu Lewin, Gabriel Stoltz

► **To cite this version:**

Eric Cancès, Mathieu Lewin, Gabriel Stoltz. The Microscopic Origin of the Macroscopic Dielectric Permittivity of Crystals: A Mathematical Viewpoint. Björn Engquist, Olof Runborg and Yen-Hsi R. Tsai. Numerical Analysis of Multiscale Computations. Proceedings of a Winter Workshop at the Banff International Research Station 2009, Springer, pp.87–125, 2011, Lecture Notes in Computational Science and Engineering, 10.1007/978-3-642-21943-6 . hal-00527022

HAL Id: hal-00527022

<https://hal.science/hal-00527022>

Submitted on 17 Oct 2010

HAL is a multi-disciplinary open access archive for the deposit and dissemination of scientific research documents, whether they are published or not. The documents may come from teaching and research institutions in France or abroad, or from public or private research centers.

L'archive ouverte pluridisciplinaire **HAL**, est destinée au dépôt et à la diffusion de documents scientifiques de niveau recherche, publiés ou non, émanant des établissements d'enseignement et de recherche français ou étrangers, des laboratoires publics ou privés.

The Microscopic Origin of the Macroscopic Dielectric Permittivity of Crystals: A Mathematical Viewpoint.

Éric Cancès, Mathieu Lewin and Gabriel Stoltz

Abstract The purpose of this paper is to provide a mathematical analysis of the Adler-Wiser formula relating the macroscopic relative permittivity tensor to the microscopic structure of the crystal at the atomic level. The technical level of the presentation is kept at its minimum to emphasize the mathematical structure of the results. We also briefly review some models describing the electronic structure of finite systems, focusing on density operator based formulations, as well as the Hartree model for perfect crystals or crystals with a defect.

1 Introduction

Insulating crystals are dielectric media. When an external electric field is applied, such an insulating material polarizes, and this induced polarization in turn affects the electric field. At the macroscopic level and in the time-independent setting, this phenomenon is modelled by the constitutive law

$$D = \varepsilon_0 \varepsilon_M E \tag{1}$$

specifying the relation between the macroscopic displacement field D and the macroscopic electric field E . The constant ε_0 is the dielectric permittivity of the vacuum, and ε_M the macroscopic relative permittivity of the crystal, a 3×3 symmetric tensor such that $\varepsilon_M \geq 1$ in the sense of symmetric matrices ($\mathbf{k}^T \varepsilon_M \mathbf{k} \geq |\mathbf{k}|^2$ for

Éric Cancès and Gabriel Stoltz
Université Paris-Est, CERMICS, Project-team Micmac, INRIA-Ecole des Ponts, 6 & 8 avenue
Blaise Pascal, 77455 Marne-la-Vallée Cedex 2, France, e-mail: cances@cermics.enpc.fr,
stoltz@cermics.enpc.fr

Mathieu Lewin
CNRS & Laboratoire de Mathématiques UMR 8088, Université de Cergy-Pontoise, 95300 Cergy-
Pontoise, France e-mail: Mathieu.Lewin@math.cnrs.fr

all $\mathbf{k} \in \mathbb{R}^3$). This tensor is proportional to the identity matrix for isotropic crystals. Recall that D is related to the so-called free charge ρ_f by the Gauss law $\operatorname{div}(D) = \rho_f$ and that the macroscopic electric field E is related to the macroscopic potential V by $E = -\nabla V$, yielding the macroscopic Poisson equation

$$-\operatorname{div}(\varepsilon_M \nabla V) = \rho_f / \varepsilon_0. \quad (2)$$

In the time-dependent setting, (1) becomes a time-convolution product:

$$D(\mathbf{r}, t) = \varepsilon_0 \int_{-\infty}^{+\infty} \varepsilon_M(t-t') E(\mathbf{r}, t') dt'. \quad (3)$$

Fourier transforming in time, we obtain

$$\mathcal{F}D(\mathbf{r}, \omega) = \mathcal{F}\varepsilon_M(\omega) \mathcal{F}E(\mathbf{r}, \omega),$$

where, as usual in Physics, we have used the following normalization convention for the Fourier transform with respect to the time-variable:

$$\mathcal{F}f(\mathbf{r}, \omega) = \int_{-\infty}^{+\infty} f(\mathbf{r}, t) e^{i\omega t} dt$$

(note that there is no minus sign in the phase factor). The time-dependent tensor ε_M in (1) can be seen as the zero-frequency limit of the frequency-dependent tensor $\mathcal{F}\varepsilon_M(\omega)$.

Of course, the constitutive laws (1) (time-independent case) and (3) (time-dependent case) are only valid in the *linear response regime*. When strong dielectric field are applied, the response can be strongly nonlinear.

The purpose of this paper is to provide a mathematical analysis of the Adler-Wiser formula [1, 36] relating the macroscopic relative permittivity tensor ε_M (as well as the frequency-dependent tensor $\mathcal{F}\varepsilon_M(\omega)$) to the microscopic structure of the crystal at the atomic level.

In Section 2, we discuss the modelling of the electronic structure of finite molecular systems. We introduce in particular the Hartree model (also called reduced Hartree-Fock model in the mathematical literature), which is the basis for our analysis of the electronic structure of crystals. This model is an approximation of the electronic N -body Schrödinger equation allowing to compute the ground state electronic density of a molecular system containing M nuclei considered as classical particles (Born-Oppenheimer approximation) and N quantum electrons, subjected to Coulomb interactions. The only empirical parameters in this model are a few fundamental constants of Physics (the reduced Planck constant \hbar , the mass of the electron m_e , the elementary charge e , and the dielectric permittivity of the vacuum ε_0) and the masses and charges of the nuclei. In this respect, this is an *ab initio*, or first-principle, model in the sense that it does not contain any empirical parameter specific to the molecular system under consideration.

We then show, in Section 3, how to extend the Hartree model for molecular systems (finite number of particles) to crystals (infinite number of particles). We first deal with perfect crystals (Section 3.2), then with crystals with local defects (Section 3.3). The mathematical theory of the electronic structure of crystals with local defects presented here (and originally published in [7]) has been strongly inspired by previous works on the mathematical foundations of quantum electrodynamics (QED) [18, 20, 19]. In some sense, a defect embedded in an insulating or semi-conducting crystal behaves similarly as a nucleus embedded in the polarizable vacuum of QED.

In Section 4, we study the dielectric response of a crystal. First, we focus on the response to an effective time-independent potential V , and expand it in powers of V (Section 4.1). The linear response term allows us to define the (microscopic) dielectric operator ε and its inverse ε^{-1} , the (microscopic) dielectric permittivity operator, and also to define a notion of renormalized charge for defects in crystals (Section 4.2). In Section 4.3, we derive the Adler-Wiser formula from the Hartree model, by means of homogenization arguments. Loosely speaking, a defect in a crystal generates an external field and thereby a dielectric response of the crystal. If a given local defect is properly rescaled, it produces a macroscopic charge (corresponding to the free charge ρ_f in (2) and the total Coulomb potential converges to the macroscopic potential V solution to (2) where ε_M is the tensor provided by the Adler-Wiser formula. A similar strategy can be used to obtain the frequency-dependent tensor $\mathcal{F}\varepsilon_M(\omega)$ (Section 4.4).

As trace-class and Hilbert-Schmidt operators play a central role in the mathematical theory of electronic structure, their definitions and some of their basic properties are recalled in Appendix for the reader's convenience.

The mathematical results contained in this proceeding have been published [7, 8, 9], or will be published very soon [10]. The proofs are omitted. A pedagogical effort has been made to present this difficult material to non-specialists.

As usual in first-principle modelling, we adopt the system of atomic units, obtained by setting

$$\hbar = 1, \quad m_e = 1, \quad e = 1, \quad \frac{1}{4\pi\varepsilon_0} = 1,$$

so that (4) reads in this new system of units:

$$-\operatorname{div}(\varepsilon_M \nabla V) = 4\pi\rho_f. \quad (4)$$

For simplicity, we omit the spin variable, but taking the spin into account does not add any difficulty. It simply makes the mathematical formalism a little heavier.

2 Electronic structure models for finite systems

Let \mathcal{H} be a Hilbert space and $\langle \cdot | \cdot \rangle$ its inner product (bra-ket Dirac's notation). Recall that if A is a self-adjoint operator on \mathcal{H} and ϕ and ψ are in $D(A)$, the domain of A , then $\langle \phi | A | \psi \rangle := \langle \phi | A \psi \rangle = \langle A \phi | \psi \rangle$. If A is bounded from below, the bilinear form $(\phi, \psi) \mapsto \langle \phi | A | \psi \rangle$ can be extended in a unique way to the form domain of A . For instance, the operator $A = -\Delta$ with domain $D(A) = H^2(\mathbb{R}^d)$ is self-adjoint on $L^2(\mathbb{R}^d)$. Its form domain is $H^1(\mathbb{R}^d)$ and $\langle \phi | A | \psi \rangle = \int_{\mathbb{R}^d} \nabla \phi \cdot \nabla \psi$. In the sequel, we denote by $\mathcal{S}(\mathcal{H})$ the vector space of *bounded* self-adjoint operators on \mathcal{H} .

For $k = 0, 1$ and 2 , and with the convention $H^0(\mathbb{R}^3) = L^2(\mathbb{R}^3)$, we denote by

$$\bigwedge_{i=1}^N H^k(\mathbb{R}^3) := \left\{ \Psi \in H^k(\mathbb{R}^{3N}) \mid \Psi(\mathbf{r}_{p(1)}, \dots, \mathbf{r}_{p(N)}) = \varepsilon(p) \Psi(\mathbf{r}_1, \dots, \mathbf{r}_N), \forall p \in \mathbb{S}_N \right\}$$

(where \mathbb{S}_N is the group of the permutations of $\{1, \dots, N\}$ and $\varepsilon(p)$ the parity of p) the antisymmetrized tensor product of N spaces $H^k(\mathbb{R}^3)$. These spaces are used to describe the electronic state of an N electron system. The antisymmetric constraint originates from the fact that electrons are fermions.

2.1 The N -body Schrödinger model

Consider a molecular system with M nuclei of charges z_1, \dots, z_M . As we work in atomic units, z_k is a positive integer. Within the Born-Oppenheimer approximation, the nuclei are modelled as classical point-like particles. This approximation results from a combination of an adiabatic limit (the small parameter being the square root of the ratio between the mass of the electron and the mass of the lightest nucleus present in the system), and a semi-classical limit. We refer to [2, 3] and references therein for the mathematical aspects.

Usually, nuclei are represented by point-like particles. If the M nuclei are located at points $\mathbf{R}_1, \dots, \mathbf{R}_M$ of \mathbb{R}^3 , the nuclear charge distribution is modelled by

$$\rho^{\text{nuc}} = \sum_{k=1}^M z_k \delta_{\mathbf{R}_k},$$

where $\delta_{\mathbf{R}_k}$ is the Dirac measure at point \mathbf{R}_k . The Coulomb potential generated by the nuclei and seen by the electrons then reads

$$V^{\text{nuc}}(\mathbf{r}) := - \sum_{k=1}^M \frac{z_k}{|\mathbf{r} - \mathbf{R}_k|}$$

(the minus sign comes from the fact that the interaction between nuclei and electrons is attractive). In order to avoid some technical difficulties due to the singularity of

the potential generated by point-like nuclei, the latter are sometimes replaced with smeared nuclei:

$$\rho^{\text{nuc}}(\mathbf{r}) = \sum_{k=1}^M z_k \chi(\mathbf{r} - \mathbf{R}_k),$$

where χ is a smooth approximation of the Dirac measure δ_0 , or more precisely a non-negative smooth radial function such that $\int_{\mathbb{R}^3} \chi = 1$, supported in a small ball centered at 0. In this case,

$$V^{\text{nuc}}(\mathbf{r}) := -(\rho^{\text{nuc}} \star |\cdot|^{-1})(\mathbf{r}) = - \int_{\mathbb{R}^3} \frac{\rho^{\text{nuc}}(\mathbf{r}')}{|\mathbf{r} - \mathbf{r}'|} d\mathbf{r}'$$

is a smooth function. We will sometimes denote this smooth function by $V_{\rho^{\text{nuc}}}$ in order to emphasize that the potential is generated by a non-singular charge distribution.

The main quantity of interest in our study is the electrostatic potential generated by the total charge, which is by definition the sum of nuclear charge ρ^{nuc} and the electronic charge ρ^{el} . According to the Born-Oppenheimer approximation, electrons are in their ground state, and ρ^{el} is a density associated with the ground state wavefunction Ψ_0 . Let us make this definition more precise.

Any (pure) state of a system of N electrons is entirely described by a wavefunction $\Psi \in \bigwedge_{i=1}^N L^2(\mathbb{R}^3)$ satisfying the normalization condition $\|\Psi\|_{L^2(\mathbb{R}^{3N})} = 1$. The density associated with Ψ is the function ρ_Ψ defined by

$$\rho_\Psi(\mathbf{r}) = N \int_{\mathbb{R}^{3(N-1)}} |\Psi(\mathbf{r}, \mathbf{r}_2, \dots, \mathbf{r}_N)|^2 d\mathbf{r}_2 \cdots d\mathbf{r}_N. \quad (5)$$

Clearly,

$$\rho_\Psi \geq 0, \quad \rho_\Psi \in L^1(\mathbb{R}^3), \quad \text{and} \quad \int_{\mathbb{R}^3} \rho_\Psi = N.$$

It can be checked that if $\Psi \in \bigwedge_{i=1}^N H^1(\mathbb{R}^3)$, then $\sqrt{\rho} \in H^1(\mathbb{R}^3)$, which implies in particular that $\rho_\Psi \in L^1(\mathbb{R}^3) \cap L^3(\mathbb{R}^3)$.

The ground state wavefunction Ψ_0 is the lowest energy, normalized eigenfunction of the time-independent Schrödinger equation

$$H_N \Psi = E \Psi, \quad \Psi \in \bigwedge_{i=1}^N H^2(\mathbb{R}^3), \quad \|\Psi\|_{L^2(\mathbb{R}^{3N})} = 1, \quad (6)$$

where H_N is the electronic Hamiltonian. The latter operator is self-adjoint on $\bigwedge_{i=1}^N L^2(\mathbb{R}^3)$, with domain $\bigwedge_{i=1}^N H^2(\mathbb{R}^3)$ and form domain $\bigwedge_{i=1}^N H^1(\mathbb{R}^3)$, and is defined as

$$H_N = -\frac{1}{2} \sum_{i=1}^N \Delta_{\mathbf{r}_i} + \sum_{i=1}^N V^{\text{nuc}}(\mathbf{r}_i) + \sum_{1 \leq i < j \leq N} \frac{1}{|\mathbf{r}_i - \mathbf{r}_j|}. \quad (7)$$

The first term in the right-hand side of (7) models the kinetic energy of the electrons, the second term the Coulomb interaction between nuclei and electrons and the third

term the Coulomb interaction between electrons. For later purposes, we write

$$H_N = T + V_{\text{ne}} + V_{\text{ee}},$$

where

$$T = -\frac{1}{2} \sum_{i=1}^N \Delta_{\mathbf{r}_i}, \quad V_{\text{ne}} = \sum_{i=1}^N V^{\text{nuc}}(\mathbf{r}_i), \quad V_{\text{ee}} = \sum_{1 \leq i < j \leq N} \frac{1}{|\mathbf{r}_i - \mathbf{r}_j|}.$$

It is proved in [37] that if the molecular system is neutral ($\sum_{k=1}^M z_k = N$) or positively charged ($\sum_{k=1}^M z_k \geq N$), then the essential spectrum of H_N is an interval of the form $[\Sigma_N, +\infty)$ with $\Sigma_N \leq 0$ and $\Sigma_N < 0$ if $N \geq 2$, and its discrete spectrum is an increasing infinite sequence of negative eigenvalues converging to Σ_N . This guarantees the existence of Ψ_0 . If E_0 , the lowest eigenvalue of H_N is non-degenerate, Ψ_0 is unique up to a global phase, and $\rho^{\text{el}} = \rho_{\Psi_0}$ is therefore uniquely defined by (5). If E_0 is degenerate, then the ground state electronic density is not unique. As the usual Born-Oppenheimer approximation is no longer valid when E_0 is degenerate, we will assume from now on that E_0 is a simple eigenvalue.

Note that Ψ_0 can also be defined variationally: It is the minimizer of

$$\inf \left\{ \langle \Psi | H_N | \Psi \rangle, \Psi \in \bigwedge_{i=1}^N H^1(\mathbb{R}^3), \|\Psi\|_{L^2(\mathbb{R}^{3N})} = 1 \right\}. \quad (8)$$

Otherwise stated, it is obtained by minimizing the energy $\langle \Psi | H_N | \Psi \rangle$ over the set of all normalized, antisymmetric wavefunctions Ψ of finite energy.

Let us mention that, as in the absence of magnetic field, the N -body Hamiltonian is real (in the sense that it transforms a real-valued function into a real-valued function), there is no loss of generality in working in the space of real-valued N -body wavefunctions. Under the assumption that E_0 is non-degenerate, (8) has exactly two minimizers, Ψ_0 and $-\Psi_0$, both of them giving rise to the same electronic density.

2.2 The N -body Schrödinger model for non-interacting electrons

Neither the Schrödinger equation (6) nor the minimization (8) can be solved with standard numerical techniques when N exceeds two or three. On the other hand, these problems become pretty simple when the interaction between electrons is neglected. In this case, the N -body Hamiltonian is separable and reads

$$H_N^0 = T + V_{\text{ne}} = \sum_{i=1}^N h_{\mathbf{r}_i} \quad \text{where} \quad h_{\mathbf{r}_i} = -\frac{1}{2} \Delta_{\mathbf{r}_i} + V^{\text{nuc}}$$

is a self-adjoint operator on $L^2(\mathbb{R}^3)$ with domain $H^2(\mathbb{R}^3)$ and form domain $H^1(\mathbb{R}^3)$, acting on functions of the variable \mathbf{r}_i . It is known that the essential spectrum of

h is $[0, +\infty)$ and that the discrete spectrum of h is an increasing infinite sequence of negative eigenvalues converging to 0. Let us denote by $\varepsilon_1 < \varepsilon_2 \leq \varepsilon_3 \leq \dots$ the eigenvalues of h counted with their multiplicities (it can be shown that ε_1 is simple) and let $(\phi_i)_{i \geq 0}$ be an orthonormal family of associated eigenvectors:

$$h\phi_i = \varepsilon_i\phi_i, \quad \varepsilon_1 < \varepsilon_2 \leq \varepsilon_3 \leq \dots, \quad \phi_i \in H^2(\mathbb{R}^3), \quad \langle \phi_i | \phi_j \rangle_{L^2(\mathbb{R}^3)} = \delta_{ij}.$$

The eigenfunctions ϕ_i are called (molecular) orbitals and the eigenvalues ε_i are called (one-particle) energy levels.

It is easy to check that if $\varepsilon_N < \varepsilon_{N+1}$, then

$$\inf \left\{ \langle \Psi | H_N^0 | \Psi \rangle, \Psi \in \bigwedge_{i=1}^N H^1(\mathbb{R}^3), \|\Psi\|_{L^2(\mathbb{R}^{3N})} = 1 \right\} \quad (9)$$

has a unique solution (up to a global phase) given by the Slater determinant

$$\Psi_0(\mathbf{r}_1, \dots, \mathbf{r}_N) = \frac{1}{\sqrt{N!}} \begin{vmatrix} \phi_1(\mathbf{r}_1) & \phi_1(\mathbf{r}_2) & \dots & \phi_1(\mathbf{r}_N) \\ \phi_2(\mathbf{r}_1) & \phi_2(\mathbf{r}_2) & \dots & \phi_2(\mathbf{r}_N) \\ \vdots & \vdots & \dots & \vdots \\ \phi_N(\mathbf{r}_1) & \phi_N(\mathbf{r}_2) & \dots & \phi_N(\mathbf{r}_N) \end{vmatrix}, \quad (10)$$

and that the ground state electronic density (5) takes the simple form

$$\rho^{\text{el}}(\mathbf{r}) = \sum_{i=1}^N |\phi_i(\mathbf{r})|^2.$$

The above description of the electronic states of a set of N non-interacting electrons in terms of orbitals cannot be easily extended to infinite systems such as crystals (the number of orbitals becoming infinite). For this reason, we introduce a new formulation based on the concept of one-particle density operator, here abbreviated as density operator.

2.3 Density operators

The (one-particle) density operator of a system of N electrons is an element of the convex set

$$\mathcal{D}_N = \{ \gamma \in \mathcal{S}(L^2(\mathbb{R}^3)) \mid 0 \leq \gamma \leq 1, \text{Tr}(\gamma) = N \}.$$

Recall that if A and B are two bounded self-adjoint operators on a Hilbert space \mathcal{H} , the notation $A \leq B$ means that $\langle \psi | A | \psi \rangle \leq \langle \psi | B | \psi \rangle$ for all $\psi \in \mathcal{H}$.

Any density operator $\gamma \in \mathcal{D}_N$ is trace-class, hence compact (the basic properties of trace-class operators are recalled in the Appendix). It can therefore be diagonal-

ized in an orthonormal basis:

$$\gamma = \sum_{i=1}^{+\infty} n_i |\phi_i\rangle\langle\phi_i| \quad \text{with} \quad \langle\phi_i|\phi_j\rangle = \delta_{ij}. \quad (11)$$

The eigenvalues n_i are called occupation numbers; the eigenfunctions ϕ_i are called natural orbitals. The conditions $0 \leq \gamma \leq 1$ and $\text{Tr}(\gamma) = N$ are respectively equivalent to

$$0 \leq n_i \leq 1 \quad \text{and} \quad \sum_{i=1}^{+\infty} n_i = N.$$

The fact that $0 \leq n_i \leq 1$ is a mathematical translation of the Pauli exclusion principle, stipulating that each quantum state $|\phi_i\rangle$ is occupied by at most one electron. The sum of the occupation numbers is equal to N , the number of electrons in the system. The density associated with γ is defined by

$$\rho_\gamma(\mathbf{r}) = \sum_{i=1}^{+\infty} n_i |\phi_i(\mathbf{r})|^2, \quad (12)$$

this definition being independent of the choice of the orthonormal basis $(\phi_i)_{i \geq 1}$ in (11) and satisfies

$$\rho_\gamma \geq 0, \quad \rho_\gamma \in L^1(\mathbb{R}^3), \quad \text{and} \quad \int_{\mathbb{R}^3} \rho_\gamma = N.$$

The kinetic energy of the density operator γ is defined as

$$T(\gamma) := \frac{1}{2} \text{Tr}(|\nabla|\gamma|\nabla|),$$

and can be finite or infinite. Recall that the operator $|\nabla|$ is the unbounded self-adjoint operator on $L^2(\mathbb{R}^3)$ with domain $H^1(\mathbb{R}^3)$ defined by

$$\forall \phi \in H^1(\mathbb{R}^3), \quad (\mathcal{F}(|\nabla|\phi))(\mathbf{k}) = |\mathbf{k}|(\mathcal{F}(\phi))(\mathbf{k})$$

where \mathcal{F} is the unitary Fourier transform

$$\mathcal{F}\phi(\mathbf{k}) = \widehat{\phi}(\mathbf{k}) = \frac{1}{(2\pi)^{3/2}} \int_{\mathbb{R}^3} \phi(\mathbf{r}) e^{-i\mathbf{k}\cdot\mathbf{r}} d\mathbf{r}.$$

The kinetic energy of a density operator γ decomposed as (11) is finite if and only if each ϕ_i is in $H^1(\mathbb{R}^3)$ and $\sum_{i=1}^{+\infty} n_i \|\nabla\phi_i\|_{L^2(\mathbb{R}^3)}^2 < \infty$, in which case

$$T(\gamma) = \frac{1}{2} \sum_{i=1}^{+\infty} n_i \|\nabla\phi_i\|_{L^2(\mathbb{R}^3)}^2.$$

As $|\nabla|$ is the square root of $-\Delta$ (i.e. $|\nabla|$ is self-adjoint, positive and $|\nabla|^2 = -\Delta$), the element $\text{Tr}(|\nabla|\gamma|\nabla|)$ of $\mathbb{R}_+ \cup \{+\infty\}$ is often denoted by $\text{Tr}(-\Delta\gamma)$. Using this

notation, we can define the convex set \mathcal{P}_N of the density operators of finite energy as

$$\mathcal{P}_N = \{ \gamma \in \mathcal{S}(L^2(\mathbb{R}^3)) \mid 0 \leq \gamma \leq 1, \text{Tr}(\gamma) = N, \text{Tr}(-\Delta\gamma) < \infty \}.$$

Lastly, it is sometimes useful to introduce the integral kernel of a density operator $\gamma \in \mathcal{P}_N$, which is called a (one-particle) density matrix, and is usually also denoted by γ . It is by definition the function $\gamma \in L^2(\mathbb{R}^3 \times \mathbb{R}^3)$ such that

$$\forall \phi \in L^2(\mathbb{R}^3), \quad (\gamma\phi)(\mathbf{r}) = \int_{\mathbb{R}^3} \gamma(\mathbf{r}, \mathbf{r}') \phi(\mathbf{r}') d\mathbf{r}'. \quad (13)$$

The expression of the density matrix γ in terms of natural orbitals and occupation numbers thus reads

$$\gamma(\mathbf{r}, \mathbf{r}') = \sum_{i=1}^{+\infty} n_i \phi_i(\mathbf{r}) \phi_i(\mathbf{r}').$$

Formally $\rho_\gamma(\mathbf{r}) = \gamma(\mathbf{r}, \mathbf{r})$ and this relation makes sense rigorously as soon as the density matrix γ has a trace on the three-dimensional vector subspace $\{(\mathbf{r}, \mathbf{r}), \mathbf{r} \in \mathbb{R}^3\}$ of $\mathbb{R}^3 \times \mathbb{R}^3$.

Let us now clarify the link between the description of electronic structures in terms of wavefunctions and the one in terms of density operators.

The density matrix associated with a wavefunction $\Psi \in \wedge_{i=1}^N L^2(\mathbb{R}^3)$ such that $\|\Psi\|_{L^2(\mathbb{R}^{3N})} = 1$ is the function of $L^2(\mathbb{R}^3 \times \mathbb{R}^3)$ defined as

$$\gamma_\Psi(\mathbf{r}, \mathbf{r}') = N \int_{\mathbb{R}^{3(N-1)}} \Psi(\mathbf{r}, \mathbf{r}_2, \dots, \mathbf{r}_N) \Psi(\mathbf{r}', \mathbf{r}_2, \dots, \mathbf{r}_N) d\mathbf{r}_2 \cdots d\mathbf{r}_N \quad (14)$$

(recall that we are dealing with real-valued wavefunctions), and the corresponding density operator by

$$\forall \phi \in L^2(\mathbb{R}^3), \quad (\gamma_\Psi \phi)(\mathbf{r}) = \int_{\mathbb{R}^3} \gamma_\Psi(\mathbf{r}, \mathbf{r}') \phi(\mathbf{r}') d\mathbf{r}'. \quad (15)$$

It is easy to see that the density operator γ_Ψ is in \mathcal{D}_N . Under the additional assumption that $\Psi \in \wedge_{i=1}^N H^1(\mathbb{R}^3)$, it is even in \mathcal{P}_N . Besides, the definition (5) of the density associated with Ψ agrees with the definition (12) of the density associated with γ_Ψ , *i.e.*

$$\rho_\Psi = \rho_{\gamma_\Psi},$$

and the same holds with the definition of the kinetic energy if $\Psi \in \wedge_{i=1}^N H^1(\mathbb{R}^3)$:

$$\langle \Psi | T | \Psi \rangle = T(\gamma_\Psi).$$

Remark 1. The maps $\left\{ \Psi \in \wedge_{i=1}^N L^2(\mathbb{R}^3) \mid \|\Psi\|_{L^2(\mathbb{R}^{3N})} = 1 \right\} \ni \Psi \mapsto \gamma_\Psi \in \mathcal{D}_N$ and $\left\{ \Psi \in \wedge_{i=1}^N H^1(\mathbb{R}^3) \mid \|\Psi\|_{L^2(\mathbb{R}^{3N})} = 1 \right\} \ni \Psi \mapsto \gamma_\Psi \in \mathcal{P}_N$ are not surjective. This means that an element of \mathcal{D}_N (resp. of \mathcal{P}_N) is not necessarily the density operator

associated with some *pure* state. However any $\gamma \in \mathcal{D}_N$ (resp. any $\gamma \in \mathcal{D}_N$) is the (one-particle) density operator associated with some *mixed* state (represented by some N -particle density operator). This property is referred to as the N -representability property of density operators.

We can now reformulate the electronic structure problem *for a system of N non-interacting electrons*, in terms of density operators:

1. The energy of a wavefunction $\Psi \in \wedge_{i=1}^N H^1(\mathbb{R}^3)$ is a linear form with respect to the density operator γ_Ψ :

$$\langle \Psi | H_N^0 | \Psi \rangle = E_{\rho^{\text{nuc}}}^0(\gamma_\Psi) \quad \text{where} \quad E_{\rho^{\text{nuc}}}^0(\gamma) = \text{Tr} \left(-\frac{1}{2} \Delta \gamma \right) + \int_{\mathbb{R}^3} \rho_\gamma V^{\text{nuc}};$$

2. The ground state density matrix, that is the density operator associated with the ground state wavefunction Ψ^0 defined by (9), is the orthogonal projector (for the L^2 inner product) on the space $\text{Span}(\phi_1, \dots, \phi_N)$:

$$\gamma_{\Psi^0} = \sum_{i=1}^N |\phi_i\rangle \langle \phi_i|;$$

3. The ground state energy and the ground state density operators are obtained by solving the minimization problem

$$\inf \left\{ E_{\rho^{\text{nuc}}}^0(\gamma), \gamma \in \mathcal{S}(L^2(\mathbb{R}^3)), 0 \leq \gamma \leq 1, \text{Tr}(\gamma) = N, \text{Tr}(-\Delta \gamma) < \infty \right\}. \quad (16)$$

The advantages of the density operator formulation, which are not obvious for finite systems, will clearly appear in Section 3, where we deal with crystals.

2.4 The Hartree model and other density operator models of electronic structures

Let us now reintroduce the Coulomb interaction between electrons, taking as a starting point the non-interacting system introduced in Section 2.2. The models presented in this section are density operator models in the sense that the ground state energy and density are obtained by minimizing some *explicit* functional $E_{\rho^{\text{nuc}}}(\gamma)$ over the set of N -representable density operators \mathcal{S}_N .

All these models share the same mathematical structure. They read:

$$\inf \left\{ E_{\rho^{\text{nuc}}}(\gamma), \gamma \in \mathcal{S}(L^2(\mathbb{R}^3)), 0 \leq \gamma \leq 1, \text{Tr}(\gamma) = N, \text{Tr}(-\Delta \gamma) < \infty \right\}, \quad (17)$$

with

$$E_{\rho^{\text{nuc}}}(\gamma) = \text{Tr} \left(-\frac{1}{2} \Delta \gamma \right) + \int_{\mathbb{R}^3} \rho_\gamma V_{\rho^{\text{nuc}}} + \frac{1}{2} D(\rho_\gamma, \rho_\gamma) + \tilde{E}(\gamma),$$

where

$$D(f, g) = \int_{\mathbb{R}^3} \int_{\mathbb{R}^3} \frac{f(\mathbf{r})g(\mathbf{r}')}{|\mathbf{r} - \mathbf{r}'|} d\mathbf{r} d\mathbf{r}' \quad (18)$$

is the classical Coulomb interaction and $\tilde{E}(\gamma)$ some correction term. Note that $D(f, g)$ is well defined for f and g in $L^{6/5}(\mathbb{R}^3)$, see for instance [30, Section IX.4]. Recall also that for each $\gamma \in \mathcal{P}_N$, $\rho_\gamma \in L^1(\mathbb{R}^3) \cap L^3(\mathbb{R}^3) \hookrightarrow L^{6/5}(\mathbb{R}^3)$.

The Hartree model, on which we will focus in this proceeding, corresponds to $\tilde{E}(\gamma) = 0$:

$$E_{\rho^{\text{nuc}}}^{\text{Hartree}}(\gamma) = \text{Tr} \left(-\frac{1}{2} \Delta \gamma \right) + \int_{\mathbb{R}^3} \rho_\gamma V_{\rho^{\text{nuc}}} + \frac{1}{2} D(\rho_\gamma, \rho_\gamma).$$

The reason why we study this model is that it has much nicer mathematical properties than other models with $\tilde{E}(\gamma) \neq 0$ (see below).

The Kohn-Sham models [24] originate from the Density Functional Theory (DFT) [13]. In this kind of models, $\tilde{E}(\gamma)$ is an explicit functional of the density ρ_γ , called the exchange-correlation functional:

$$E_{\rho^{\text{nuc}}}^{\text{KS}}(\gamma) = \text{Tr} \left(-\frac{1}{2} \Delta \gamma \right) + \int_{\mathbb{R}^3} V_{\rho^{\text{nuc}}} \rho_\gamma + \frac{1}{2} D(\rho_\gamma, \rho_\gamma) + E^{\text{xc}}(\rho_\gamma). \quad (19)$$

It follows from the Hohenberg-Kohn theorem [21] (see [27] for a more mathematical presentation of this result) that there exists some functional $E^{\text{xc}}(\rho)$ depending only on the density ρ , such that minimizing (17) with $E_{\rho^{\text{nuc}}} = E_{\rho^{\text{nuc}}}^{\text{KS}}$ provides the *exact* ground state energy and density, whatever the nuclear charge distribution ρ^{nuc} . Note however, that the Kohn-Sham ground state density operator obtained by minimizing (17) is not the ground state density operator corresponding to the ground state wavefunction Ψ^0 . Unfortunately, the exact exchange-correlation functional is not known. Many approximate functionals have been proposed, and new ones come up on a regular basis. For the sake of illustration, the simplest approximate exchange-correlation functional (but clearly not the best one) is the so-called $X\alpha$ functional

$$E_{X\alpha}^{\text{xc}}(\rho) = -C_{X\alpha} \int_{\mathbb{R}^3} \rho^{4/3},$$

where $C_{X\alpha}$ is a positive constant

Lastly, the models issued from the Density-Matrix Functional Theory (DMFT) involve functionals $\tilde{E}(\gamma)$ depending explicitly on the density operator γ , but not only on the density ρ_γ . Similar to DFT, there exists an *exact* (but unknown) functional $\tilde{E}(\gamma)$ for which minimizing (17) gives the exact ground state energy and density, whatever the nuclear charge distribution ρ^{nuc} . However, unlike the exact DFT functional, the exact DMFT functional also provides the exact ground state density operator. Several approximate DMFT functionals have been proposed. Note that the Hartree-Fock model, which is usually defined as the variational approximation of (8) obtained by restricting the minimization set to the set of finite energy Slater

determinants, can also be seen as a DMFT functional

$$E_{\rho^{\text{nuc}}}^{\text{HF}}(\gamma) = \text{Tr} \left(-\frac{1}{2} \Delta \gamma \right) + \int_{\mathbb{R}^3} \rho_{\gamma} V_{\rho^{\text{nuc}}} + \frac{1}{2} D(\rho_{\gamma}, \rho_{\gamma}) - \frac{1}{2} \int_{\mathbb{R}^3} \int_{\mathbb{R}^3} \frac{|\gamma(\mathbf{r}, \mathbf{r}')|^2}{|\mathbf{r} - \mathbf{r}'|} d\mathbf{r} d\mathbf{r}',$$

where, as above, $\gamma(\mathbf{r}, \mathbf{r}')$ denotes the integral kernel of γ .

The existence of a solution to (17) for a neutral or positively charged system is established in [34] for the Hartree model ($E^{\text{xc}} = 0$), in [26] for the Hartree-Fock model, in [4] for the $X\alpha$ and the standard LDA model, and in [15] for the Müller DMFT functional.

The key-property allowing for a comprehensive mathematical analysis of the bulk limit for the Hartree model is that the ground state *density* is unique (which is not the case for the other models presented in this section). This means that in the Hartree framework, all the minimizers to (17) share the same density. This follows from the fact that the ground state Hartree density solves the variational problem

$$\inf \left\{ \mathcal{E}(\rho), \rho \geq 0, \sqrt{\rho} \in H^1(\mathbb{R}^3), \int_{\mathbb{R}^3} \rho = N \right\}, \quad (20)$$

where

$$\mathcal{E}(\rho) = F(\rho) + \int_{\mathbb{R}^3} \rho V_{\rho^{\text{nuc}}} + \frac{1}{2} D(\rho, \rho)$$

and

$$F(\rho) = \inf \left\{ \text{Tr} \left(-\frac{1}{2} \Delta \gamma \right), \gamma \in \mathcal{S}(L^2(\mathbb{R}^3)), 0 \leq \gamma \leq 1, \text{Tr}(\gamma) = N, \text{Tr}(-\Delta \gamma) < \infty, \rho_{\gamma} = \rho \right\}.$$

As the functional $\mathcal{E}(\rho)$ is strictly convex on the convex set

$$\left\{ \rho \geq 0, \sqrt{\rho} \in H^1(\mathbb{R}^3), \int_{\mathbb{R}^3} \rho = N \right\},$$

uniqueness follows.

The Euler equation for the Hartree model reads

$$\begin{cases} \gamma^0 = \sum_{i=1}^{+\infty} n_i |\phi_i\rangle \langle \phi_i|, & \rho^0(\mathbf{r}) = \rho_{\gamma^0}(\mathbf{r}) = \sum_{i=1}^{+\infty} n_i |\phi_i(\mathbf{r})|^2, \\ H^0 \phi_i = \varepsilon_i \phi_i, & \langle \phi_i | \phi_j \rangle = \delta_{ij}, \\ n_i = 1 \text{ if } \varepsilon_i < \varepsilon_{\text{F}}, 0 \leq n_i \leq 1 \text{ if } \varepsilon_i = \varepsilon_{\text{F}}, n_i = 0 \text{ if } \varepsilon_i > \varepsilon_{\text{F}}, & \sum_{i=1}^{+\infty} n_i = N, \\ H^0 = -\frac{1}{2} \Delta + V^0, & \\ -\Delta V^0 = 4\pi(\rho^{\text{nuc}} - \rho^0). & \end{cases} \quad (21)$$

It can be proved that the essential spectrum of the self-adjoint operator H^0 is equal to \mathbb{R}_+ and that, for a neutral or positively charged system, H^0 has at least N negative eigenvalues. The scalar ε_F , called the Fermi level, can be interpreted as the Lagrange multiplier of the constraint $\text{Tr}(\gamma^0) = N$.

Assuming that $\varepsilon_N < \varepsilon_{N+1}$, the ground state density operator γ^0 of the Hartree model is unique: It is the orthogonal projector

$$\gamma^0 = \sum_{i=1}^N |\phi_i\rangle\langle\phi_i|.$$

In this case, (21) can be rewritten under the more compact form

$$\begin{cases} \gamma^0 = 1_{(-\infty, \varepsilon_F]}(H^0), & \rho^0 = \rho_{\gamma^0}, \\ H^0 = -\frac{1}{2}\Delta + V^0, \\ -\Delta V^0 = 4\pi(\rho^{\text{nuc}} - \rho^0), \end{cases} \quad (22)$$

for any $\varepsilon_N < \varepsilon_F < \varepsilon_{N+1}$. In this equation, the notation $1_{(-\infty, \varepsilon_F]}(H^0)$ is used for the spectral projector of H^0 corresponding to the spectrum in the interval $(-\infty, \varepsilon_F]$.

Lastly, we remark that if smeared nuclei are used, then $D(\rho_{\text{per}}^{\text{nuc}}, \rho_{\text{per}}^{\text{nuc}})$ is well defined (and finite). This allows us to reformulate the Hartree ground state problem as

$$\inf \left\{ \tilde{E}_{\rho^{\text{nuc}}}^{\text{Hartree}}(\gamma), \gamma \in \mathcal{S}(L^2(\mathbb{R}^3)), 0 \leq \gamma \leq 1, \text{Tr}(\gamma) = N, \text{Tr}(-\Delta\gamma) < \infty \right\}, \quad (23)$$

where

$$\tilde{E}_{\rho^{\text{nuc}}}^{\text{Hartree}}(\gamma) = \text{Tr} \left(-\frac{1}{2}\Delta\gamma \right) + \frac{1}{2}D(\rho^{\text{nuc}} - \rho_{\gamma}, \rho^{\text{nuc}} - \rho_{\gamma}).$$

The main interest of this new formulation of the Hartree problem is that the functional $\tilde{E}_{\rho^{\text{nuc}}}^{\text{Hartree}}$ is the sum of two non-negative contributions: the kinetic energy and the Coulomb energy of the total charge distribution $\rho^{\text{nuc}} - \rho_{\gamma}$. The presence of the unphysical terms corresponding to the self-interaction of nuclei in $D(\rho_{\text{per}}^{\text{nuc}}, \rho_{\text{per}}^{\text{nuc}})$ is not a problem for our purpose.

The time-dependent version of the Hartree model formally reads

$$i\frac{d\gamma}{dt}(t) = \left[-\frac{1}{2}\Delta - (\rho^{\text{nuc}}(t) - \rho_{\gamma(t)}) \star |\cdot|^{-1}, \gamma(t) \right],$$

where $[A, B] = AB - BA$ denotes the commutator of the operators A and B . We are not going to elaborate further on the precise mathematical meaning of this formal equation for finite systems, but refer the reader to [5] and references therein (see in particular [12, Section XVII.B.5]) for further precision on the mathematical meaning of the above equation. On the other hand, we will define and study a mild version of it in the case of crystals with defects in Section 4.4.

3 The Hartree model for crystals

The Hartree model presented in the previous section describes a *finite* system of N electrons in the electrostatic potential created by a nuclear density of charge ρ^{nuc} . Our goal is to describe an *infinite* crystalline material obtained in the bulk limit. In fact we shall consider two such systems. The first one is the periodic crystal obtained when, in the bulk limit, the nuclear density approaches the periodic nuclear distribution of the perfect crystal:

$$\rho^{\text{nuc}} \rightarrow \rho_{\text{per}}^{\text{nuc}}, \quad (24)$$

$\rho_{\text{per}}^{\text{nuc}}$ being a \mathcal{R} -periodic distribution. The set \mathcal{R} is a periodic lattice of \mathbb{R}^3 :

$$\mathcal{R} = \mathbb{Z}\mathbf{a}_1 + \mathbb{Z}\mathbf{a}_2 + \mathbb{Z}\mathbf{a}_3, \quad (25)$$

where $(\mathbf{a}_1, \mathbf{a}_2, \mathbf{a}_3)$ is a given triplet of linearly independent vectors of \mathbb{R}^3 . The second system is the previous crystal in the presence of a local defect:

$$\rho^{\text{nuc}} \rightarrow \rho_{\text{per}}^{\text{nuc}} + m, \quad (26)$$

m representing the nuclear charge of the defect. The functional spaces in which $\rho_{\text{per}}^{\text{nuc}}$ and m are chosen are made precise below.

3.1 Basics of Fourier and Bloch-Floquet theories

A perfect crystal is characterized by a lattice \mathcal{R} of \mathbb{R}^3 and a \mathcal{R} -periodic nuclear charge distribution $\rho_{\text{per}}^{\text{nuc}}$. Not surprisingly, Fourier and Bloch-Floquet theories, which allow to conveniently exploit the periodicity of the problem, play essential roles in the mathematical description of the electronic structure of crystals.

Let \mathcal{R}^* be the reciprocal lattice of the lattice \mathcal{R} defined in (25) (also called dual lattice):

$$\mathcal{R}^* = \mathbb{Z}\mathbf{a}_1^* + \mathbb{Z}\mathbf{a}_2^* + \mathbb{Z}\mathbf{a}_3^*, \quad \text{where } \mathbf{a}_i \cdot \mathbf{a}_j^* = 2\pi\delta_{ij}.$$

Denote by Γ a unit cell of \mathcal{R} . Recall that a unit cell is a semi-open bounded polytope of \mathbb{R}^3 such that the cells $\Gamma + \mathbf{R} = \{(\mathbf{r} + \mathbf{R}), \mathbf{r} \in \Gamma\}$ for $\mathbf{R} \in \mathcal{R}$ form a tessellation of the space \mathbb{R}^3 (i.e. $(\Gamma + \mathbf{R}) \cap (\Gamma + \mathbf{R}') = \emptyset$ if $\mathbf{R} \neq \mathbf{R}'$ and $\cup_{\mathbf{R} \in \mathcal{R}} (\Gamma + \mathbf{R}) = \mathbb{R}^3$). A possible choice for Γ is $\{x_1\mathbf{a}_1 + x_2\mathbf{a}_2 + x_3\mathbf{a}_3, -1/2 < x_i \leq 1/2\}$. Another choice is the Wigner-Seitz cell of \mathcal{R} , which is by definition the semi-open Voronoi cell of the origin for the lattice \mathcal{R} . Lastly, we denote by Γ^* the first Brillouin zone, that is the Wigner-Seitz cell of the dual lattice. Let us illustrate these concepts on the simplest example, the cubic lattice, for which $\mathcal{R} = a\mathbb{Z}^3$ (for some $a > 0$). In this particular case, $\mathcal{R}^* = \frac{2\pi}{a}\mathbb{Z}^3$, the Wigner-Seitz cell is $\Gamma = (-a/2, a/2]^3$ and $\Gamma^* = (-\pi/a, \pi/a]^3$.

For each $\mathbf{K} \in \mathcal{R}^*$, we denote by $e_{\mathbf{K}}(\mathbf{r}) = |\Gamma|^{-1/2} e^{i\mathbf{K}\cdot\mathbf{r}}$ the Fourier mode with wavevector \mathbf{K} . According to the theory of Fourier series, each \mathcal{R} -periodic distribution v can be expanded in Fourier series as

$$v = \sum_{\mathbf{K} \in \mathcal{R}^*} c_{\mathbf{K}}(v) e_{\mathbf{K}}, \quad (27)$$

where $c_{\mathbf{K}}(v)$ is the \mathbf{K} -th Fourier coefficient of v , the convergence of the series holding in the distributional sense. We introduce the usual \mathcal{R} -periodic L^p spaces defined by

$$L_{\text{per}}^p(\Gamma) := \{ v \in L_{\text{loc}}^p(\mathbb{R}^3) \mid v \text{ } \mathcal{R}\text{-periodic} \},$$

and endow them with the norms

$$\|v\|_{L_{\text{per}}^p(\Gamma)} := \left(\int_{\Gamma} |v|^p \right)^{1/p} \quad \text{for } 1 \leq p < \infty \quad \text{and} \quad \|v\|_{L_{\text{per}}^\infty(\Gamma)} := \text{ess-sup } |v|.$$

In particular,

$$\|v\|_{L_{\text{per}}^2(\Gamma)} = (v, v)_{L_{\text{per}}^2(\Gamma)}^{1/2} \quad \text{where} \quad (v, w)_{L_{\text{per}}^2(\Gamma)} := \int_{\Gamma} \bar{v}w.$$

Any function $v \in L_{\text{per}}^2(\Gamma)$ can be expanded in Fourier modes according to (27), the Fourier coefficients being given by the simple formula

$$c_{\mathbf{K}}(v) = \frac{1}{|\Gamma|^{1/2}} \int_{\Gamma} v(\mathbf{r}) e^{-i\mathbf{K}\cdot\mathbf{r}} d\mathbf{r},$$

and the convergence of the series (27) also holds in $L_{\text{per}}^2(\Gamma)$. Besides,

$$\forall (v, w) \in L_{\text{per}}^2(\Gamma) \times L_{\text{per}}^2(\Gamma), \quad (v, w)_{L_{\text{per}}^2(\Gamma)} = \sum_{\mathbf{K} \in \mathcal{R}^*} \overline{c_{\mathbf{K}}(v)} c_{\mathbf{K}}(w).$$

For each $s \in \mathbb{R}$, the \mathcal{R} -periodic Sobolev space of index s is defined as

$$H_{\text{per}}^s(\Gamma) := \left\{ v = \sum_{\mathbf{K} \in \mathcal{R}^*} c_{\mathbf{K}}(v) e_{\mathbf{K}} \mid \sum_{\mathbf{K} \in \mathcal{R}^*} (1 + |\mathbf{K}|^2)^s |c_{\mathbf{K}}(v)|^2 < \infty \right\},$$

and endowed with the inner product

$$(v, w)_{H_{\text{per}}^s(\Gamma)} := \sum_{\mathbf{K} \in \mathcal{R}^*} (1 + |\mathbf{K}|^2)^s \overline{c_{\mathbf{K}}(v)} c_{\mathbf{K}}(w).$$

The Bloch-Floquet theory was introduced by Floquet for periodic differential equations and generalized by Bloch to periodic partial differential equations. We just recall the basic results of this theory used in this proceeding and refer the reader to [31] for further precisions.

Any function $f \in L^2(\mathbb{R}^3)$ can be decomposed by the Bloch-Floquet transform as

$$f(\mathbf{r}) = \int_{\Gamma^*} f_{\mathbf{q}}(\mathbf{r}) e^{i\mathbf{q}\cdot\mathbf{r}} d\mathbf{q},$$

where \int_{Γ^*} is a notation for $|\Gamma^*|^{-1} \int_{\Gamma^*}$ and where the functions $f_{\mathbf{q}}$ are defined by

$$f_{\mathbf{q}}(\mathbf{r}) = \sum_{\mathbf{R} \in \mathcal{R}} f(\mathbf{r} + \mathbf{R}) e^{-i\mathbf{q}\cdot(\mathbf{r} + \mathbf{R})} = \frac{(2\pi)^{3/2}}{|\Gamma|} \sum_{\mathbf{K} \in \mathcal{R}^*} \widehat{f}(\mathbf{q} + \mathbf{K}) e^{i\mathbf{K}\cdot\mathbf{r}}. \quad (28)$$

For almost all $\mathbf{q} \in \mathbb{R}^3$, $f_{\mathbf{q}} \in L^2_{\text{per}}(\Gamma)$. Besides, $f_{\mathbf{q} + \mathbf{K}}(\mathbf{r}) = f_{\mathbf{q}}(\mathbf{r}) e^{-i\mathbf{K}\cdot\mathbf{r}}$ for all $\mathbf{K} \in \mathcal{R}^*$ and almost all $\mathbf{q} \in \mathbb{R}^3$. Lastly,

$$\|f\|_{L^2(\mathbb{R}^3)}^2 = \int_{\Gamma^*} \|f_{\mathbf{q}}\|_{L^2_{\text{per}}(\Gamma)}^2 d\mathbf{q}.$$

For $\mathbf{R} \in \mathbb{R}^3$, we denote by $\tau_{\mathbf{R}}$ the translation operator defined by

$$\forall v \in L^2(\mathbb{R}^3), \quad (\tau_{\mathbf{R}}v)(\mathbf{r}) = v(\mathbf{r} - \mathbf{R}).$$

The main interest of the Bloch-Floquet transform (28) is that it provides a ‘‘block diagonalization’’ of any \mathcal{R} -periodic operator, that is of any operator on $L^2(\mathbb{R}^3)$ which commutes with $\tau_{\mathbf{R}}$ for all $\mathbf{R} \in \mathcal{R}$. Consider first a bounded \mathcal{R} -periodic operator A on $L^2(\mathbb{R}^3)$. Then there exists a family $(A_{\mathbf{q}})_{\mathbf{q} \in \Gamma^*}$ of bounded operators on $L^2_{\text{per}}(\Gamma)$ such that

$$\forall v \in L^2(\mathbb{R}^3), \quad (Av)_{\mathbf{q}} = A_{\mathbf{q}}v_{\mathbf{q}} \quad \text{for almost all } \mathbf{q} \in \Gamma^*. \quad (29)$$

If, in addition, A is self-adjoint on $L^2(\mathbb{R}^3)$, then $A_{\mathbf{q}}$ is self-adjoint on $L^2_{\text{per}}(\Gamma)$ for almost all $\mathbf{q} \in \Gamma^*$ and

$$\sigma(A) = \overline{\bigcup_{\mathbf{q} \in \Gamma^*} \sigma(A_{\mathbf{q}})}.$$

In particular, the translation operators $(\tau_{\mathbf{R}})_{\mathbf{R} \in \mathcal{R}}$, which obviously commute with each other, are homotheties in the Bloch-Floquet representation

$$\forall \mathbf{R} \in \mathcal{R}, \quad (\tau_{\mathbf{R}})_{\mathbf{q}} = e^{i\mathbf{q}\cdot\mathbf{R}} 1_{L^2_{\text{per}}(\Gamma)}.$$

As $(e_{\mathbf{K}})_{\mathbf{K} \in \mathcal{R}^*}$ form an orthonormal basis of $L^2_{\text{per}}(\Gamma)$, it follows from (29) that any bounded \mathcal{R} -periodic operator on $L^2(\mathbb{R}^3)$ is completely characterized by the Bloch-Floquet matrices $(([A_{\mathbf{K}, \mathbf{K}'}(\mathbf{q})])_{(\mathbf{K}, \mathbf{K}') \in \mathcal{R}^* \times \mathcal{R}^*})_{\mathbf{q} \in \Gamma^*}$ defined for almost all $\mathbf{q} \in \Gamma^*$ by

$$A_{\mathbf{K}, \mathbf{K}'}(\mathbf{q}) := \langle e_{\mathbf{K}}, A_{\mathbf{q}} e_{\mathbf{K}'} \rangle_{L^2_{\text{per}}(\Gamma)}.$$

In particular, it holds

$$\forall v \in L^2(\mathbb{R}^3), \quad (\widehat{Av})(\mathbf{q} + \mathbf{K}) = \sum_{\mathbf{K}' \in \mathcal{R}^*} A_{\mathbf{K}, \mathbf{K}'}(\mathbf{q}) \widehat{v}(\mathbf{q} + \mathbf{K}'),$$

for all $(\mathbf{K}, \mathbf{K}') \in \mathcal{R}^* \times \mathcal{R}^*$ and almost all $\mathbf{q} \in \Gamma^*$.

For unbounded operators, the situation is a little bit more intricate. Let us limit ourselves to the case of \mathcal{L} -periodic Schrödinger operators of the form

$$H = -\frac{1}{2}\Delta + V_{\text{per}}$$

with $V_{\text{per}} \in L^2_{\text{per}}(\Gamma)$. By the Kato-Rellich theorem and [31, Theorem XIII.96], the operator H is self-adjoint on $L^2(\mathbb{R}^3)$, with domain $H^2(\mathbb{R}^3)$. It can also be decomposed as follows:

$$\forall v \in H^2(\mathbb{R}^3), \quad v_{\mathbf{q}} \in H^2_{\text{per}}(\Gamma) \quad \text{and} \quad (Hv)_{\mathbf{q}} = H_{\mathbf{q}}v_{\mathbf{q}} \quad \text{for almost all } \mathbf{q} \in \Gamma^*,$$

where $H_{\mathbf{q}}$ is the self-adjoint operator on $L^2_{\text{per}}(\Gamma)$ with domain $H^2_{\text{per}}(\Gamma)$, defined by

$$H_{\mathbf{q}} = -\frac{1}{2}\Delta - i\mathbf{q} \cdot \nabla + \frac{|\mathbf{q}|^2}{2} + V_{\text{per}}.$$

It is easily seen that for each $\mathbf{q} \in \Gamma^*$, $H_{\mathbf{q}}$ is bounded below and has a compact resolvent. Consequently, there exists a sequence $(\varepsilon_{n,\mathbf{q}})_{n \geq 1}$ of real numbers going to $+\infty$, and an orthonormal basis $(u_{n,\mathbf{q}})_{n \geq 1}$ of $L^2_{\text{per}}(\Gamma)$ such that

$$H_{\mathbf{q}} = \sum_{n=1}^{+\infty} \varepsilon_{n,\mathbf{q}} |u_{n,\mathbf{q}}\rangle \langle u_{n,\mathbf{q}}|.$$

As the mapping $\mathbf{q} \mapsto H_{\mathbf{q}}$ is polynomial on \mathbb{R}^3 , it is possible to number the eigenvalues $\varepsilon_{n,\mathbf{q}}$ in such a way that $(\varepsilon_{n,0})_{n \geq 1}$ is non-decreasing and that for each $n \geq 1$, the mapping $\mathbf{q} \mapsto \varepsilon_{n,\mathbf{q}}$ is analytic in each direction. Then (see Fig. 1)

$$\sigma(H) = \overline{\bigcup_{\mathbf{q} \in \Gamma^*} \sigma(H_{\mathbf{q}})} = \bigcup_{n \geq 1} [\Sigma_n^-, \Sigma_n^+],$$

with

$$\Sigma_n^- = \min_{\mathbf{q} \in \Gamma^*} \varepsilon_{n,\mathbf{q}}, \quad \Sigma_n^+ = \max_{\mathbf{q} \in \Gamma^*} \varepsilon_{n,\mathbf{q}}. \quad (30)$$

The interval $[\Sigma_n^-, \Sigma_n^+]$ is called the n^{th} band of the spectrum of H . It is possible to prove that the spectrum of H is purely absolutely continuous [35]. In particular, H has no eigenvalues.

3.2 Perfect crystals

The purpose of this section is to formally construct, then justify with mathematical arguments, a Hartree model for the electronic structure of perfect crystals.

As announced, we begin with a formal argument and consider a sequence of finite nuclear distribution $(\rho_n^{\text{nuc}})_{n \in \mathbb{N}}$ converging to the periodic distribution $\rho_{\text{per}}^{\text{nuc}}$ of

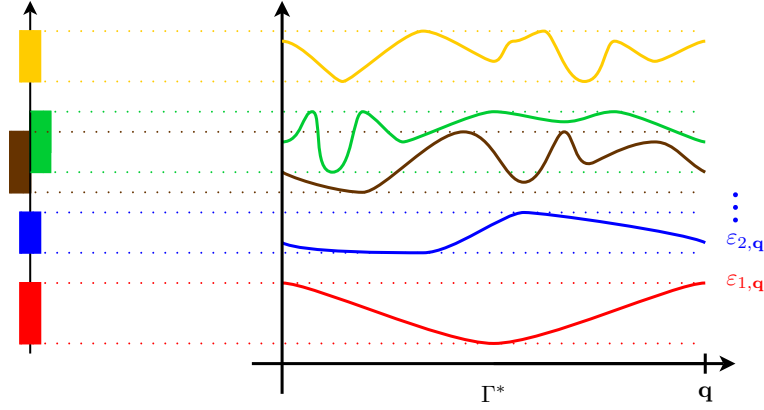


Fig. 1 The spectrum of a periodic Schrödinger operator is a union of bands, as a consequence of the Bloch-Floquet decomposition.

the perfect crystal when n goes to infinity. For instance, we can take

$$\rho_n^{\text{nuc}} = \rho_{\text{per}}^{\text{nuc}} \left(\sum_{\mathbf{R} \in \mathcal{R} \mid |\mathbf{R}| \leq n} 1_{\Gamma + \mathbf{R}} \right)$$

(we assume that the function describing the nuclear charge in the unit cell of the perfect crystal is supported in some compact set included in the interior of Γ). We solve the Hartree problem for each ρ_n^{nuc} with the constraint that the system remains neutral for each n . Assuming that when n goes to infinity,

- the Hartree ground state density converges to some \mathcal{R} -periodic density $\rho_{\text{per}}^0 \in L^1_{\text{per}}(\Gamma)$;
- the Coulomb potential generated by the total charge converges to some \mathcal{R} -periodic potential V_{per}^0 ;
- the Hartree ground state density operator converges to some operator γ_{per}^0 ;
- the Fermi level converges to some $\varepsilon_{\text{F}}^0 \in \mathbb{R}$,

we obtain by *formally* passing to the limit in (22), the self-consistent equations

$$\begin{cases} \gamma_{\text{per}}^0 = 1_{(-\infty, \varepsilon_{\text{F}}^0]}(H_{\text{per}}^0), & \rho_{\text{per}}^0 = \rho_{\gamma_{\text{per}}^0}, \\ H_{\text{per}}^0 = -\frac{1}{2}\Delta + V_{\text{per}}^0, \\ -\Delta V_{\text{per}}^0 = 4\pi(\rho_{\text{per}}^{\text{nuc}} - \rho_{\text{per}}^0). \end{cases} \quad (31)$$

Let us comment on this system of equations. First, we notice that for the periodic Coulomb equation $-\Delta V_{\text{per}}^0 = 4\pi(\rho_{\text{per}}^{\text{nuc}} - \rho_{\text{per}}^0)$ to have a solution, each unit cell must be neutral:

$$\int_{\Gamma} \rho_{\text{per}}^0 = \int_{\Gamma} \rho_{\text{per}}^{\text{nuc}} = Z, \quad (32)$$

where Z is the number of electrons, and also the number of protons, per unit cell. Second, as V_{per}^0 is \mathcal{R} -periodic (and belongs to $L^2_{\text{per}}(\Gamma)$ even for point-like nuclei), we can apply the result of the previous section and write down the Bloch-Floquet decomposition of H_{per}^0 :

$$(H_{\text{per}}^0)_{\mathbf{q}} = -\frac{1}{2}\Delta - i\mathbf{q} \cdot \nabla + \frac{|\mathbf{q}|^2}{2} + V_{\text{per}}^0 = \sum_{n=1}^{+\infty} \varepsilon_{n,\mathbf{q}} |u_{n,\mathbf{q}}\rangle \langle u_{n,\mathbf{q}}|. \quad (33)$$

The operator $\gamma_{\text{per}}^0 = 1_{(-\infty, \varepsilon_{\text{F}}^0]}(H_{\text{per}}^0)$ then is a bounded self-adjoint operator which commutes with the translations $(\tau_{\mathbf{R}})_{\mathbf{R} \in \mathcal{R}}$, and its Bloch-Floquet decomposition reads

$$(\gamma_{\text{per}}^0)_{\mathbf{q}} = \sum_{n=1}^{+\infty} 1_{\varepsilon_{n,\mathbf{q}} \leq \varepsilon_{\text{F}}^0} |u_{n,\mathbf{q}}\rangle \langle u_{n,\mathbf{q}}|.$$

Actually, the set $\{q \in \Gamma^* \mid \exists n \geq 1 \text{ s.t. } \varepsilon_{n,\mathbf{q}} = \varepsilon_{\text{F}}^0\}$ is of measure zero (the spectrum of H_{per}^0 is purely continuous). It follows that γ_{per}^0 is always an orthogonal projector, even if ε_{F}^0 belongs to the spectrum of H_{per}^0 .

Using the Bloch decomposition of γ_{per}^0 , we can write the density ρ_{per}^0 as

$$\rho_{\text{per}}^0(\mathbf{r}) = \int_{\Gamma^*} \sum_{n=1}^{+\infty} 1_{\varepsilon_{n,\mathbf{q}} \leq \varepsilon_{\text{F}}^0} |u_{n,\mathbf{q}}(\mathbf{r})|^2 d\mathbf{q}.$$

Integrating on Γ , and using (32) and the orthonormality of the functions $(u_{n,\mathbf{q}})_{n \geq 1}$ in $L^2_{\text{per}}(\Gamma)$, we obtain

$$Z = \frac{1}{|\Gamma^*|} \sum_{n=1}^{+\infty} |\{\mathbf{q} \in \Gamma^* \mid \varepsilon_{n,\mathbf{q}} \leq \varepsilon_{\text{F}}^0\}|. \quad (34)$$

This equation determines the value of the Fermi level ε_{F} uniquely. It is easy to see that if the periodic Coulomb potential is shifted by a uniform constant C , and if ε_{F}^0 is replaced with $\varepsilon_{\text{F}}^0 + C$, then γ_{per}^0 and ρ_{per}^0 remain unchanged.

The formal bulk limit argument presented above has been rigorously founded by Catto, Le Bris and Lions in [11], for $\rho_{\text{per}}^{\text{nuc}} = \sum_{\mathbf{R} \in \mathbb{Z}^3} \chi(\cdot - \mathbf{R})$ (smeared nuclei of unit charge disposed on the cubic lattice \mathbb{Z}^3). It is also possible to justify the periodic Hartree model by passing to the limit on the supercell model with artificial periodic boundary conditions (see [7]). The latter approach is less physical, but technically much easier, and its extension to arbitrary crystalline structures (including point-like nuclei) is straightforward. It results from these mathematical works that the Hartree model for perfect crystals is well-defined. More precisely:

1. The Hartree ground state density operator γ_{per}^0 and density ρ_{per}^0 of a crystal with periodic nuclear density $\rho_{\text{per}}^{\text{nuc}}$ (composed of point-like or smeared nuclei) are uniquely defined;
2. The ground state density ρ_{per}^0 satisfies the neutrality charge constraint (32);

3. The periodic Coulomb potential V_{per}^0 and the Fermi level ε_{F}^0 are uniquely defined up to an additive constant (and $V_{\text{per}}^0 - \varepsilon_{\text{F}}^0$ is uniquely defined);
4. The ground state density operator γ_{per}^0 is an infinite rank orthogonal projector satisfying the self-consistent equation (31);
5. γ_{per}^0 can be obtained by minimizing some periodic model set on the unit cell Γ (see [11] for details).

In the remainder of the paper we assume that the system is an insulator (or a semi-conductor) in the sense that the N^{th} band is strictly below the $(N+1)^{\text{st}}$ band:

$$\Sigma_N^+ < \Sigma_{N+1}^-,$$

where Σ_n^\pm are defined in (30). In this case, one can choose for ε_{F}^0 any number in the range $(\Sigma_N^+, \Sigma_{N+1}^-)$. The electronic state of the perfect crystal is the same whatever the value of ε_{F}^0 in the gap $(\Sigma_N^+, \Sigma_{N+1}^-)$. On the other hand, as will be seen in the next section, fixing the value of ε_{F}^0 may change the electronic state of the crystal in the presence of a local defect.

In this paper however, we are only interested in the dielectric response of the crystal, which corresponds to the limit of small defects (in a sense that will be made precise later), and in this limit, the value of ε_{F}^0 does not play any role as long as it remains inside the gap $(\Sigma_N^+, \Sigma_{N+1}^-)$. For simplicity, we consider in the following

$$\varepsilon_{\text{F}}^0 = \frac{\Sigma_N^+ + \Sigma_{N+1}^-}{2}.$$

Lastly, we denote by

$$g = \Sigma_{N+1}^- - \Sigma_N^+ > 0 \tag{35}$$

the band gap.

3.3 Crystals with local defects

We now describe the results of [7] dealing with the modelling of local defects in crystals in the framework of the Hartree model. The main idea is to seek the ground state density operator of a crystal with a local defect characterized by the nuclear charge distribution (26) under the form

$$\gamma_{m, \varepsilon_{\text{F}}^0} = \gamma_{\text{per}}^0 + Q_{m, \varepsilon_{\text{F}}^0}.$$

In this formalism, the defect is seen as a quasi-molecule with nuclear charge distribution m and electronic ground state density operator $Q_{m, \varepsilon_{\text{F}}^0}$ (and ground state electronic density $\rho_{Q_{m, \varepsilon_{\text{F}}^0}}$), embedded in the perfect crystal. Here, the charge of the defect is controlled by the Fermi level (the chemical potential). The dual approach, in which the charge of the defect is imposed, is also dealt with in [7]. It should be

noticed that neither m nor $\rho_{Q_{m,\varepsilon_F^0}}$ are *a priori* non-negative. For instance, the nuclear distribution of a defect corresponding to the replacement of a nucleus of charge z located at point $\mathbf{R} \in \mathbb{R}^3$ with a nucleus of charge z' is $m = (z' - z)\delta_{\mathbf{R}}$ and can therefore be positively or negatively charged depending on the value of $z' - z$. Regarding the electronic state, the constraints $(\gamma_{m,\varepsilon_F^0})^* = \gamma_{m,\varepsilon_F^0}$, $0 \leq \gamma_{m,\varepsilon_F^0} \leq 1$ and $\rho_{\gamma_{m,\varepsilon_F^0}} \geq 0$, respectively read $(Q_{m,\varepsilon_F^0})^* = Q_{m,\varepsilon_F^0}$, $-\gamma_{\text{per}}^0 \leq Q_{m,\varepsilon_F^0} \leq 1 - \gamma_{\text{per}}^0$ and $\rho_{Q_{m,\varepsilon_F^0}} \geq -\rho_{\text{per}}^0$.

The next step is to exhibit a variational model allowing to compute Q_{m,ε_F^0} from m , ε_F^0 and the ground state of the perfect crystal.

First, we perform the following formal calculation of the difference between the Hartree free energy of some trial density operator $\gamma = \gamma_{\text{per}}^0 + Q$ subjected to the nuclear potential generated by $\rho_{\text{per}}^{\text{nuc}} + m$, and the Hartree free energy of the perfect crystal:

$$\begin{aligned} & \left(\widetilde{E}_{\rho_{\text{per}}^{\text{nuc}}+m}^{\text{Hartree}}(\gamma_{\text{per}}^0 + Q) - \varepsilon_F^0 \text{Tr}(\gamma_{\text{per}}^0 + Q) \right) - \left(\widetilde{E}_{\rho_{\text{per}}^{\text{nuc}}}^{\text{Hartree}}(\gamma_{\text{per}}^0) - \varepsilon_F^0 \text{Tr}(\gamma_{\text{per}}^0) \right) \\ & \stackrel{\text{formal}}{=} \text{Tr} \left(-\frac{1}{2} \Delta Q \right) + \int_{\mathbb{R}^3} \rho_Q V_{\text{per}}^0 - \int_{\mathbb{R}^3} \rho_Q V_m + \frac{1}{2} D(\rho_Q, \rho_Q) - \varepsilon_F^0 \text{Tr}(Q) \\ & \quad - \int_{\mathbb{R}^3} m V_{\text{per}}^0 + \frac{1}{2} D(m, m). \end{aligned} \quad (36)$$

The last two terms are constants that we can discard. Of course, the left-hand side of (36) does not have any mathematical sense since it is the difference of two energies both equal to plus infinity. On the other hand, we are going to see that it is possible to give a mathematical meaning to the sum of the first five terms of the right-hand side when Q belongs to some functional space \mathcal{Q} defined below, and to characterize the ground state density operator Q_{m,ε_F^0} of the quasi-molecule, by minimizing the so-defined energy functional on a closed convex subset \mathcal{H} of \mathcal{Q} .

For this purpose, we first need to extend the definition (18) of the Coulomb interaction to the Coulomb space \mathcal{C} defined as

$$\mathcal{C} := \left\{ f \in \mathcal{S}'(\mathbb{R}^3) \mid \widehat{f} \in L_{\text{loc}}^1(\mathbb{R}^3), D(f, f) := 4\pi \int_{\mathbb{R}^3} \frac{|\widehat{f}(k)|^2}{|k|^2} dk \right\},$$

where $\mathcal{S}'(\mathbb{R}^3)$ is the space of tempered distributions on \mathbb{R}^3 . Endowed with its natural inner product

$$\langle f, g \rangle_{\mathcal{C}} := D(f, g) := 4\pi \int_{\mathbb{R}^3} \frac{\widehat{f}(k) \overline{\widehat{g}(k)}}{|k|^2} dk, \quad (37)$$

\mathcal{C} is a Hilbert space. It can be proved that $L^{6/5}(\mathbb{R}^3) \hookrightarrow \mathcal{C}$ and that for any $(f, g) \in L^{6/5}(\mathbb{R}^3) \times L^{6/5}(\mathbb{R}^3)$, it holds

$$4\pi \int_{\mathbb{R}^3} \frac{\widehat{f}(k) \overline{\widehat{g}(k)}}{|k|^2} dk = \int_{\mathbb{R}^3} \int_{\mathbb{R}^3} \frac{f(\mathbf{r}) g(\mathbf{r}')}{|\mathbf{r} - \mathbf{r}'|} d\mathbf{r} d\mathbf{r}'.$$

Hence, the definition (37) of $D(\cdot, \cdot)$ on \mathcal{C} is consistent with the usual definition (18) of the Coulomb interaction when the latter makes sense. The Coulomb space \mathcal{C} therefore is the set of charge distributions of finite Coulomb energy.

Second, we introduce, for an operator A on $L^2(\mathbb{R}^3)$, the notation

$$\begin{aligned} A^{--} &:= \gamma_{\text{per}}^0 A \gamma_{\text{per}}^0, & A^{-+} &:= \gamma_{\text{per}}^0 A (1 - \gamma_{\text{per}}^0), \\ A^{+-} &:= (1 - \gamma_{\text{per}}^0) A \gamma_{\text{per}}^0, & A^{++} &:= (1 - \gamma_{\text{per}}^0) A (1 - \gamma_{\text{per}}^0), \end{aligned}$$

and note that the constraints $Q = Q^*$ and $-\gamma_{\text{per}}^0 \leq Q \leq 1 - \gamma_{\text{per}}^0$ are equivalent to

$$Q^* = Q, \quad Q^2 \leq Q^{++} - Q^{--}. \quad (38)$$

From the second inequality we deduce that it then holds $Q^{--} \leq 0$ and $Q^{++} \geq 0$. Using the fact that $\text{Tr}(V_{\text{per}}^0 Q) = \int_{\mathbb{R}^3} \rho_Q V_{\text{per}}^0$, we formally obtain

$$\begin{aligned} \text{Tr} \left(-\frac{1}{2} \Delta Q \right) + \int_{\mathbb{R}^3} \rho_Q V_{\text{per}}^0 - \varepsilon_{\text{F}}^0 \text{Tr}(Q) &= \text{Tr}((H_{\text{per}}^0 - \varepsilon_{\text{F}}^0) Q) \\ &= \text{Tr}((H_{\text{per}}^0 - \varepsilon_{\text{F}}^0)^{++} Q^{++}) + \text{Tr}((H_{\text{per}}^0 - \varepsilon_{\text{F}}^0)^{--} Q^{--}). \end{aligned}$$

We now remark that, by definition of γ_{per}^0 , $(H_{\text{per}}^0 - \varepsilon_{\text{F}}^0)^{++} \geq 0$ and $(H_{\text{per}}^0 - \varepsilon_{\text{F}}^0)^{--} \leq 0$, so that the right-hand term of the above expression can be rewritten as

$$\text{Tr}(|H_{\text{per}}^0 - \varepsilon_{\text{F}}^0|^{1/2} (Q^{++} - Q^{--}) |H_{\text{per}}^0 - \varepsilon_{\text{F}}^0|^{1/2}). \quad (39)$$

The above expression is well defined in $\mathbb{R}_+ \cup \{+\infty\}$ for all Q satisfying the constraints (38). It takes a finite value if Q is chosen in the vector space

$$\begin{aligned} \mathcal{Q} = \{Q \in \mathfrak{S}_2 \mid Q^* = Q, \quad Q^{--} \in \mathfrak{S}_1, \quad Q^{++} \in \mathfrak{S}_1, \\ |\nabla|Q \in \mathfrak{S}_2, \quad |\nabla|Q^{--}|\nabla| \in \mathfrak{S}_1, \quad |\nabla|Q^{++}|\nabla| \in \mathfrak{S}_1\}, \end{aligned} \quad (40)$$

where \mathfrak{S}_1 and \mathfrak{S}_2 respectively denote the spaces of trace-class and Hilbert-Schmidt operators on $L^2(\mathbb{R}^3)$ (see Appendix for details). Endowed with its natural norm, or with any equivalent norm such as

$$\|Q\|_{\mathcal{Q}} = \|(1 + |\nabla|)Q\|_{\mathfrak{S}_2} + \|(1 + |\nabla|)Q^{++}(1 + |\nabla|)\|_{\mathfrak{S}_1} + \|(1 + |\nabla|)Q^{--}(1 + |\nabla|)\|_{\mathfrak{S}_1},$$

\mathcal{Q} is a Banach space.

Before proceeding further, let us comment on the definition of \mathcal{Q} . As the trial density operators Q must satisfy the constraints (38), it is natural to impose $Q^* = Q$. Since $|H_{\text{per}}^0 - \varepsilon_{\text{F}}^0|^{1/2} (1 + |\nabla|)^{-1}$ is a bounded operator with bounded inverse (see [7]), the four conditions $Q^{--} \in \mathfrak{S}_1$, $Q^{++} \in \mathfrak{S}_1$, $|\nabla|Q^{--}|\nabla| \in \mathfrak{S}_1$ and $|\nabla|Q^{++}|\nabla| \in \mathfrak{S}_1$ are necessary and sufficient conditions for the expression (39) with Q satisfying (38) being finite. The other constraints imposed to the elements of \mathcal{Q} (that is, $Q \in \mathfrak{S}_2$ and $|\nabla|Q \in \mathfrak{S}_2$) follow from the fact that for any Q satisfying (38)

$$\begin{aligned} (Q^{--} \in \mathfrak{S}_1, Q^{++} \in \mathfrak{S}_1) &\Rightarrow (Q^2 \in \mathfrak{S}_1) \\ (|\nabla|Q^{--}|\nabla| \in \mathfrak{S}_1, |\nabla|Q^{++}|\nabla| \in \mathfrak{S}_1) &\Rightarrow (|\nabla|Q^2|\nabla| \in \mathfrak{S}_1). \end{aligned}$$

In order to simplify the notation, we set for $Q \in \mathcal{Q}$,

$$\begin{aligned} \text{Tr}_0(Q) &:= \text{Tr}(Q^{++} + Q^{--}), \\ \text{Tr}_0((H_{\text{per}}^0 - \varepsilon_{\text{F}}^0)Q) &:= \text{Tr}(|H_{\text{per}}^0 - \varepsilon_{\text{F}}^0|^{1/2}(Q^{++} - Q^{--})|H_{\text{per}}^0 - \varepsilon_{\text{F}}^0|^{1/2}). \end{aligned}$$

An important result is that the linear application $Q \mapsto \rho_Q$ originally defined on the dense subset $\mathcal{Q} \cap \mathfrak{S}_1$ of \mathcal{Q} can be extended in a unique way to a continuous linear application

$$\begin{aligned} \mathcal{Q} &\rightarrow L^2(\mathbb{R}^3) \cap \mathcal{C} \\ Q &\mapsto \rho_Q. \end{aligned}$$

Note that the density associated with a generic element of \mathcal{Q} is not necessarily an integrable function. On the other hand, its Coulomb energy is always finite.

Let m be such that $V_m = (m \star |\cdot|^{-1}) \in \mathcal{C}'$. Here and in the sequel

$$\mathcal{C}' := \left\{ V \in L^6(\mathbb{R}^3) \mid \nabla V \in (L^2(\mathbb{R}^3))^3 \right\}$$

denotes the dual space of \mathcal{C} , endowed with the inner product

$$\langle V_1, V_2 \rangle_{\mathcal{C}'} := \frac{1}{4\pi} \int_{\mathbb{R}^3} \nabla V_1 \cdot \nabla V_2 = \frac{1}{4\pi} \int_{\mathbb{R}^3} |k|^2 \overline{\hat{V}_1(k)} \hat{V}_2(k) dk.$$

It follows from the above arguments that the energy functional

$$E^{m, \varepsilon_{\text{F}}^0}(Q) = \text{Tr}_0((H_{\text{per}}^0 - \varepsilon_{\text{F}}^0)Q) - \int_{\mathbb{R}^3} \rho_Q V_m + \frac{1}{2} D(\rho_Q, \rho_Q)$$

is well defined on \mathcal{Q} and that a good candidate for a variational model allowing to compute the ground state density operator $Q_{m, \varepsilon_{\text{F}}^0}$ is

$$\inf \left\{ E^{m, \varepsilon_{\text{F}}^0}(Q), Q \in \mathcal{K} \right\} \quad (41)$$

where

$$\mathcal{K} = \left\{ Q \in \mathcal{Q} \mid -\gamma_{\text{per}}^0 \leq Q \leq 1 - \gamma_{\text{per}}^0 \right\}. \quad (42)$$

Note that \mathcal{K} is a closed convex subset of \mathcal{Q} .

The above formal construction of the model (41) is justified in [7] by means of rigorous bulk limit arguments. To summarize the situation, the Hartree ground state density operator of the crystal with nuclear charge density $\rho_{\text{per}}^{\text{nuc}} + m$ (the charge of the defect being controlled by the Fermi level) is given by

$$\gamma = \gamma_{\text{per}}^0 + \mathcal{Q}_{m, \varepsilon_{\text{F}}^0}$$

where $\mathcal{Q}_{m, \varepsilon_{\text{F}}^0}$ is obtained by solving (41).

The existence of a Hartree ground state density operator for a crystal with a local defect, as well as the uniqueness of the corresponding density and some other important properties, are granted by the following theorem which gathers several results from [7] and [9].

Theorem 1. *Let m such that $(m \star |\cdot|^{-1}) \in L^2(\mathbb{R}^3) + \mathcal{C}'$. Then,*

1. (41) has at least one minimizer $\mathcal{Q}_{m, \varepsilon_{\text{F}}^0}$, and all the minimizers of (41) share the same density $\rho_{m, \varepsilon_{\text{F}}^0}$;
2. $\mathcal{Q}_{m, \varepsilon_{\text{F}}^0}$ is solution to the self-consistent equation

$$\mathcal{Q}_{m, \varepsilon_{\text{F}}^0} = 1_{(-\infty, \varepsilon_{\text{F}}^0]} \left(H_{\text{per}}^0 + (\rho_{m, \varepsilon_{\text{F}}^0} - m) \star |\cdot|^{-1} \right) - 1_{(-\infty, \varepsilon_{\text{F}}^0]} \left(H_{\text{per}}^0 \right) + \delta, \quad (43)$$

where δ is a finite-rank self-adjoint operator on $L^2(\mathbb{R}^3)$ such that $0 \leq \delta \leq 1$ and $\text{Ran}(\delta) \subset \text{Ker} \left(H_{\text{per}}^0 + (\rho_{m, \varepsilon_{\text{F}}^0} - m) \star |\cdot|^{-1} - \varepsilon_{\text{F}}^0 \right)$.

The interpretation of the Euler equation (43), which also reads

$$\gamma_{\text{per}}^0 + \mathcal{Q}_{m, \varepsilon_{\text{F}}^0} = 1_{(-\infty, \varepsilon_{\text{F}}^0]} \left(H_{m, \varepsilon_{\text{F}}^0}^0 \right) + \delta$$

with

$$H_{m, \varepsilon_{\text{F}}^0}^0 = H_{\text{per}}^0 + (\rho_{m, \varepsilon_{\text{F}}^0} - m) \star |\cdot|^{-1}, \quad 0 \leq \delta \leq 1, \quad \text{Ran}(\delta) \subset \text{Ker}(H_{m, \varepsilon_{\text{F}}^0}^0 - \varepsilon_{\text{F}}^0),$$

is the following. The mean-field Hamiltonian $H_{m, \varepsilon_{\text{F}}^0}^0$ is uniquely defined, since all the minimizers of (41) share the same density $\rho_{m, \varepsilon_{\text{F}}^0}$. Besides, the operator $(\rho_{m, \varepsilon_{\text{F}}^0} - m) \star |\cdot|^{-1}$ being a relatively compact perturbation of H_{per}^0 , it results from the Weyl theorem (see [31, Section XIII.4]) that the Hamiltonians H_{per}^0 and $H_{m, \varepsilon_{\text{F}}^0}^0$ have the same essential spectra. On the other hand, while H_{per}^0 has no eigenvalues, $H_{m, \varepsilon_{\text{F}}^0}^0$ may have a countable number of isolated eigenvalues of finite multiplicities in the gaps as well as below the bottom of the essential spectrum. The only possible accumulation points of these eigenvalues are the edges of the bands.

If $\varepsilon_{\text{F}}^0 \notin \sigma(H_{m, \varepsilon_{\text{F}}^0}^0)$, then $\delta = 0$ and the ground state density operator of the crystal in the presence of the defect is the orthogonal projector $\gamma_{\text{per}}^0 + \mathcal{Q}_{m, \varepsilon_{\text{F}}^0}$: All the energy levels lower than the Fermi level are fully occupied while the other ones are empty (see Fig. 2). In this case, $\mathcal{Q}_{m, \varepsilon_{\text{F}}^0}$ is both a Hilbert-Schmidt operator and the difference of two projectors. It therefore follows from [18, Lemma 2] that

$$\text{Tr}_0(\mathcal{Q}_{m, \varepsilon_{\text{F}}^0}) \in \mathbb{N}. \quad (44)$$

Assuming that $m \in L^1(\mathbb{R}^3)$ and $\int_{\mathbb{R}^3} m \in \mathbb{N}$, the integer

$$\int_{\mathbb{R}^3} m - \text{Tr}_0(Q_{m, \varepsilon_F^0})$$

can be interpreted as the *bare* charge of the defect (in contrast with the *screened* or *renormalized* charge to be defined later).

If $\varepsilon_F^0 \in \sigma(H_{m, \varepsilon_F^0}^0)$, then the energy levels with energy ε_F^0 may be fully or partially occupied, and it may *a priori* happen that (41) has several minimizers, differing from one another by a finite rank self-adjoint operator with range in $\text{Ker}(H_{m, \varepsilon_F^0}^0 - \varepsilon_F^0)$.

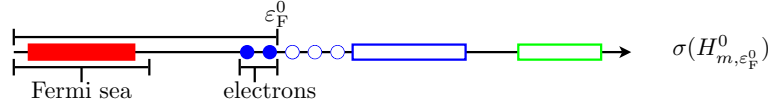


Fig. 2 General form of the spectrum of the self-consistent operator $H_{m, \varepsilon_F^0}^0$, in the presence of a defect and for a fixed chemical potential ε_F^0 .

4 Dielectric response of a crystal

In this section, we study the response of the electronic ground state of a crystal to a *small, effective* potential. In Section 4.1, we consider a time-independent perturbation $V \in L^2(\mathbb{R}^3) + \mathcal{C}'$, with $\|V\|_{L^2 + \mathcal{C}'} < \alpha$ (for some $\alpha > 0$ small enough). It can be proved (see [9, Lemma 5]) that there exists $\beta > 0$ such that

$$\left(\|m \star |\cdot|^{-1}\|_{L^2 + \mathcal{C}'} < \beta \right) \Rightarrow \left(\|(\rho_{m, \varepsilon_F^0} - m) \star |\cdot|^{-1}\|_{L^2 + \mathcal{C}'} < \alpha \right). \quad (45)$$

The results of Section 4.1 therefore directly apply to the case of a crystal with a local defect with nuclear charge distribution m , provided the defect is small enough (in the sense that $\|m \star |\cdot|^{-1}\|_{L^2 + \mathcal{C}'} < \beta$).

In Section 4.4, we consider a time-dependent perturbation

$$v(t, \mathbf{r}) = (\rho(t, \cdot) \star |\cdot|^{-1})(\mathbf{r}) \quad \text{with} \quad \rho \in L_{\text{loc}}^1(\mathbb{R}, L^2(\mathbb{R}^3) \cap \mathcal{C}). \quad (46)$$

4.1 Series expansion of the time-independent response

For $V \in L^2(\mathbb{R}^3) + \mathcal{C}'$, the spectrum of $H_{\text{per}}^0 + V$ depends continuously of V . In particular (see [9, Lemma 2]), there exists some $\alpha > 0$, such that if \mathcal{C} is a smooth curve in the complex plane enclosing the whole spectrum of H_{per}^0 below ε_F^0 , crossing the

real line at ε_F^0 and at some $c < \inf \sigma(H_{\text{per}}^0)$ and such that

$$d(\sigma(H_{\text{per}}^0), \Lambda) = \frac{g}{4} \quad \text{where} \quad \Lambda = \left\{ z \in \mathbb{C} \mid d(z, \mathfrak{C}) \leq \frac{g}{4} \right\},$$

d denoting the Euclidean distance in the complex plane and g the band gap (35) (see Fig. 3), then $\sigma(H_{\text{per}}^0 + V) \cap (-\infty, \varepsilon_F^0]$ is contained in the interior of \mathfrak{C} for all $V \in L^2(\mathbb{R}^3) + \mathcal{C}'$ such that $\|V\|_{L^2 + \mathcal{C}'} < \alpha$.

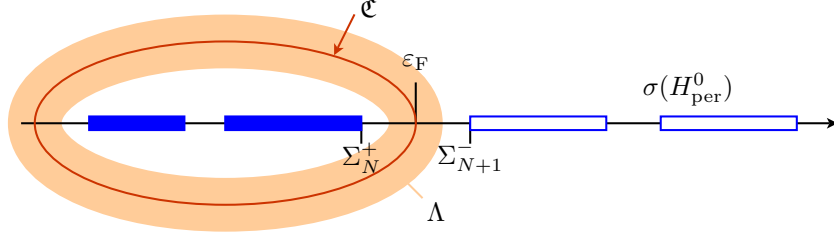


Fig. 3 Graphical representation of a contour $\mathfrak{C} \subset \mathbb{C}$ enclosing $\sigma(H_{\text{per}}^0) \cap (-\infty, \varepsilon_F^0]$ and of the compact set Λ .

As a consequence, we obtain that for all $V \in L^2(\mathbb{R}^3) + \mathcal{C}'$ such that $\|V\|_{L^2 + \mathcal{C}'} < \alpha$,

$$\begin{aligned} Q_V &= 1_{(-\infty, \varepsilon_F^0]}(H_{\text{per}}^0 + V) - 1_{(-\infty, \varepsilon_F^0]}(H_{\text{per}}^0) \\ &= \frac{1}{2i\pi} \oint_{\mathfrak{C}} \left((z - H_{\text{per}}^0 - V)^{-1} - (z - H_{\text{per}}^0)^{-1} \right) dz, \end{aligned} \quad (47)$$

where we have used the fact that $\varepsilon_F^0 \notin \sigma(H_{\text{per}}^0 + V)$ to establish the first equality, and the Cauchy formula to derive the second one.

Expanding (47) in powers of V , we obtain

$$Q_V = \sum_{n=1}^N Q_{n,V} + \tilde{Q}_{N+1,V}, \quad (48)$$

where we have gathered the terms involving powers of V larger than N in a remainder $\tilde{Q}_{N+1,V}$. The linear contribution is given by

$$Q_{1,V} = \frac{1}{2i\pi} \oint_{\mathfrak{C}} (z - H_{\text{per}}^0)^{-1} V (z - H_{\text{per}}^0)^{-1} dz. \quad (49)$$

The higher order contributions and the remainder are respectively given by

$$Q_{n,V} = \frac{1}{2i\pi} \oint_{\mathfrak{C}} (z - H_{\text{per}}^0)^{-1} \left[V (z - H_{\text{per}}^0)^{-1} \right]^n dz$$

and

$$\tilde{Q}_{N+1,V} = \frac{1}{2i\pi} \oint_{\mathfrak{C}} (z - H_{\text{per}}^0 - V)^{-1} \left[V (z - H_{\text{per}}^0)^{-1} \right]^{N+1} dz.$$

Proposition 1. *The terms of the perturbation expansion (48) enjoy the following properties.*

1. *The k -linear application*

$$(V_1, \dots, V_n) \mapsto \frac{1}{2i\pi} \oint_{\mathcal{C}} (z - H_{\text{per}}^0)^{-1} V_1 (z - H_{\text{per}}^0)^{-1} \cdots V_n (z - H_{\text{per}}^0)^{-1} dz$$

is well-defined and continuous from $(L^2(\mathbb{R}^3) + \mathcal{C}')^n$ to \mathcal{Q} for all $n \geq 1$, and from $(L^2(\mathbb{R}^3) + \mathcal{C}')^n$ to \mathfrak{S}_1 for all $n \geq 6$. In particular, for all $V \in L^2(\mathbb{R}^3) + \mathcal{C}'$, $Q_{n,V} \in \mathcal{Q}$ for all $n \geq 1$ and $Q_{n,V} \in \mathfrak{S}_1$ for all $n \geq 6$. Besides, for all $V \in L^2(\mathbb{R}^3) + \mathcal{C}'$, $\text{Tr}_0(Q_{n,V}) = 0$ for all $n \geq 1$ and $\text{Tr}(Q_{n,V}) = 0$ for all $n \geq 6$.

2. *If $V \in L^1(\mathbb{R}^3)$, $Q_{n,V}$ is in \mathfrak{S}_1 for each $n \geq 1$ and $\text{Tr}(Q_{n,V}) = 0$.*

3. *For each $V \in L^2(\mathbb{R}^3) + \mathcal{C}'$ such that $\|V\|_{L^2 + \mathcal{C}'} < \alpha$, the operator $\tilde{Q}_{N+1,V}$ is in \mathcal{Q} for all $N \geq 0$ with $\text{Tr}_0(\tilde{Q}_{N+1,V}) = 0$, and in \mathfrak{S}_1 for all $N \geq 5$, with $\text{Tr}(\tilde{Q}_{N+1,V}) = \text{Tr}_0(\tilde{Q}_{N+1,V}) = 0$.*

We are now in position to define some operators which play an important role in the sequel:

- the Coulomb operator v_c , which defines a bijective isometry between \mathcal{C} and \mathcal{C}' :

$$v_c(\rho) := \rho \star |\cdot|^{-1};$$

- the independent particle polarization operator χ_0 defined by

$$\chi_0(V) := \rho_{Q_{1,V}},$$

which provides the first order response of the electronic density of the crystal to a time-independent modification of the effective potential. The operator χ_0 is a continuous linear application from $L^1(\mathbb{R}^3)$ to $L^1(\mathbb{R}^3)$ and from $L^2(\mathbb{R}^3) + \mathcal{C}'$ to $L^2(\mathbb{R}^3) \cap \mathcal{C}$;

- the linear operator \mathcal{L} defined by

$$\mathcal{L} := -\chi_0 v_c,$$

which is a bounded nonnegative self-adjoint operator on \mathcal{C} . As a consequence, $(1 + \mathcal{L})^{-1}$ is a well-defined bounded self-adjoint operator on \mathcal{C} ;

- the dielectric operator $\varepsilon = v_c(1 + \mathcal{L})v_c^{-1}$, and its inverse, the dielectric permittivity operator

$$\varepsilon^{-1} = v_c(1 + \mathcal{L})^{-1}v_c^{-1},$$

both being continuous linear operators on \mathcal{C}' . Note that the hermitian dielectric operator, defined as $\tilde{\varepsilon} = v_c^{-1/2} \varepsilon v_c^{1/2}$ is a self-adjoint, invertible, bounded operator on $L^2(\mathbb{R}^3)$ and is for this reason conveniently used in mathematical proofs.

We now focus our attention on the total Coulomb potential

$$V_m = (m - \rho_{m,\varepsilon_F^0}) \star |\cdot|^{-1} = v_c(m - \rho_{m,\varepsilon_F^0}),$$

generated by some charge distribution m such that $\|m \star |\cdot|^{-1}\|_{L^2+\mathcal{C}'} < \beta$, and on the response ρ_{m,ε_F^0} of the Fermi sea. In view of (45), we can apply the above results and deduce from (48) that

$$\begin{aligned} \rho_{m,\varepsilon_F^0} &= \rho_{Q_{-v_m}} = \rho_{Q_{1,-v_m}} + \rho_{\tilde{Q}_{2,-v_m}} = -\chi_0 V_m + \rho_{\tilde{Q}_{2,-v_m}} \\ &= \mathcal{L}(m - \rho_{m,\varepsilon_F^0}) + \rho_{\tilde{Q}_{2,-v_m}}. \end{aligned} \quad (50)$$

The above relation, which also reads

$$(m - \rho_{m,\varepsilon_F^0}) = (1 + \mathcal{L})^{-1}m - (1 + \mathcal{L})^{-1}(\rho_{\tilde{Q}_{2,-v_m}}) \quad (51)$$

or

$$V_m = v_c(1 + \mathcal{L})^{-1}m - v_c(1 + \mathcal{L})^{-1}(\rho_{\tilde{Q}_{2,-v_m}}), \quad (52)$$

is fundamental since it allows to split the quantities of interest (the total charge $(m - \rho_{m,\varepsilon_F^0})$ or the total Coulomb potential V_m generated by the defect) into two components:

- a linear contribution in m , very singular, and responsible for charge renormalization at the microscopic level, and for the dielectric properties of the crystal at the macroscopic level;
- a nonlinear contribution which, in the regime under study ($\|m \star |\cdot|^{-1}\|_{L^2+\mathcal{C}'} < \beta$), is regular at the microscopic level and vanishes in the macroscopic limit.

4.2 Properties of Q_{m,ε_F^0} and ρ_{m,ε_F^0} for small amplitude defects

The relation (50), combined with the properties of the operator \mathcal{L} stated in Proposition 2 below, allows to derive some interesting properties of Q_{m,ε_F^0} and ρ_{m,ε_F^0} and to propose a definition of the renormalized charge of the defect.

Proposition 2. *Let $\rho \in L^1(\mathbb{R}^3)$. Then, $\mathcal{L}(\rho) \in L^2(\mathbb{R}^3) \cap \mathcal{C}$, $\widehat{\mathcal{L}(\rho)}$ is continuous on $\mathbb{R}^3 \setminus \mathcal{R}^*$, and for all $\sigma \in S^2$ (the unit sphere of \mathbb{R}^3),*

$$\lim_{\eta \rightarrow 0^+} \widehat{\mathcal{L}(\rho)}(\eta\sigma) = (\sigma^T L \sigma) \widehat{\rho}(0) \quad (53)$$

where $L \in \mathbb{R}^{3 \times 3}$ is the non-negative symmetric matrix defined by

$$\forall \mathbf{k} \in \mathbb{R}^3, \quad \mathbf{k}^T L \mathbf{k} = \frac{8\pi}{|\Gamma|} \sum_{n=1}^N \sum_{n'=N+1}^{+\infty} \int_{\Gamma^*} \frac{\left| \langle (\mathbf{k} \cdot \nabla_{\mathbf{r}}) u_{n,\mathbf{q}}, u_{n',\mathbf{q}} \rangle_{L^2_{\text{per}}(\Gamma)} \right|^2}{(\varepsilon_{n',\mathbf{q}} - \varepsilon_{n,\mathbf{q}})^3} d\mathbf{q}, \quad (54)$$

where the $\varepsilon_{n,\mathbf{q}}$'s and the $u_{n,\mathbf{q}}$'s are the eigenvalues and eigenvectors arising in the spectral decomposition (33) of $(H_{\text{per}}^0)_{\mathbf{q}}$. Additionally,

$$L_0 = \frac{1}{3} \text{Tr}(L) > 0. \quad (55)$$

Notice that the convergence of the series (54) is granted by the fact that $\varepsilon_{n,\mathbf{q}} - \varepsilon_{n',\mathbf{q}} \geq \Sigma_{n'}^- - \Sigma_n^+ \geq g$ for all $n \leq N < n'$ and all $\mathbf{q} \in \Gamma^*$ (where $g > 0$ is the band gap), and the existence of $C \in \mathbb{R}_+$ such that $\|u_{n,\mathbf{q}}\|_{H_{\text{per}}^2(\Gamma)} \leq C$ for all $1 \leq n \leq N$ and all $\mathbf{q} \in \Gamma^*$. Actually, the convergence of the series is rather fast since $\Sigma_{n'}^- \sim Cn'^{2/3}$ (this estimate is obtained by comparing the eigenvalues of H_{per}^0 with those of the Laplace operator on $L_{\text{per}}^2(\Gamma)$).

We do not reproduce here the quite technical proof of Proposition 2. Let us however emphasize the essential role played by the long range character of the Coulomb potential. If $|\cdot|^{-1}$ is replaced by a potential $v_r \in L^1(\mathbb{R}^3)$, then for all $\rho \in L^1(\mathbb{R}^3)$, $\rho \star v_r \in L^1(\mathbb{R}^3)$, hence $\mathcal{L}(\rho) \in L^1(\mathbb{R}^3)$ and $L = 0$. More precisely, the Bloch-Floquet decomposition of the Coulomb kernel reads

$$(|\cdot|)_{\mathbf{q}}(\mathbf{r}) = \frac{4\pi}{|\Gamma|} \left(\frac{1}{|\mathbf{q}|^2} + \sum_{\mathbf{K} \in \mathcal{R}^* \setminus \{0\}} \frac{e^{i\mathbf{K} \cdot \mathbf{r}}}{|\mathbf{q} + \mathbf{K}|^2} \right),$$

and only the singular component $\frac{4\pi}{|\Gamma||\mathbf{q}|^2}$, which originates from the long-range of the Coulomb potential, gives a nonzero contribution to L .

We can deduce from (50) and Proposition 2 that, in general, the minimizer $Q_{m,\varepsilon_{\text{F}}^0}$ to (41) is not trace-class and that the density $\rho_{m,\varepsilon_{\text{F}}^0}$ is not an integrable function if the host crystal is anisotropic. Let us detail this point.

Consider some $m \in L^1(\mathbb{R}^3) \cap L^2(\mathbb{R}^3)$ such that $\int_{\mathbb{R}^3} m \neq 0$ and $\|m \star |\cdot|^{-1}\|_{L^2+\mathcal{C}'} < \beta$. In view of (45) and Proposition 1, it holds

$$\text{Tr}_0(Q_{m,\varepsilon_{\text{F}}^0}) = \text{Tr}_0(Q_{1,-v_m} + \tilde{Q}_{2,-v_m}) = 0. \quad (56)$$

Assume that $\rho_{m,\varepsilon_{\text{F}}^0}$ is in $L^1(\mathbb{R}^3)$. Then a technical lemma (see [9, Lemma 4]) shows that the Fourier transform of the density $\rho_{\tilde{Q}_{2,-v_m}}$, corresponding to the nonlinear response terms, is continuous and vanishes at zero. This means that, although it is not known whether $\rho_{\tilde{Q}_{2,-v_m}}$ is in $L^1(\mathbb{R}^3)$, this density of charge behaves in the Fourier space as if it was integrable with an integral equal to zero. It follows from (50) and Proposition 1 that for each $\sigma \in S^2$,

$$\widehat{\rho}_{m,\varepsilon_{\text{F}}^0}(0) = \lim_{\eta \rightarrow 0^+} \mathcal{L}(\widehat{\rho_{m,\varepsilon_{\text{F}}^0} - m})(\eta\sigma) = (\sigma^T L \sigma)(\widehat{\rho}_{m,\varepsilon_{\text{F}}^0}(0) - \widehat{m}(0)). \quad (57)$$

As by assumption $\widehat{m}(0) \neq 0$ (since $\int_{\mathbb{R}^3} m \neq 0$), we reach a contradiction unless the matrix L is proportional to the identity matrix. Defining here an isotropic crystal as a crystal for which $L \neq L_0 1$, this proves that, in general, $\rho_{m,\varepsilon_{\text{F}}^0}$ is not an integrable function for anisotropic crystals (and this *a fortiori* implies that $Q_{m,\varepsilon_{\text{F}}^0}$ is not trace-class).

Let us now consider an isotropic crystal. If Q_{m,ε_F^0} were trace-class, then ρ_{m,ε_F^0} would be in $L^1(\mathbb{R}^3)$, and we would deduce from (56) that

$$(2\pi)^{3/2} \widehat{\rho}_{m,\varepsilon_F^0}(0) = \int_{\mathbb{R}^3} \rho_{m,\varepsilon_F^0} = \text{Tr}(Q_{m,\varepsilon_F^0}) = \text{Tr}_0(Q_{m,\varepsilon_F^0}) = 0.$$

Again, except in the very special case when $L = 1$, this contradicts (57) since $\widehat{m} \neq 0$ by assumption. Thus, in general, Q_{m,ε_F^0} is not trace-class, even for isotropic crystals. We do not know whether the electronic density ρ_{m,ε_F^0} generated by some $m \in L^1(\mathbb{R}^3) \cap L^2(\mathbb{R}^3)$ (this assumption implies $m \in L^{6/5}(\mathbb{R}^3) \hookrightarrow \mathcal{C}$) in an isotropic crystal is integrable or not. If it is, it follows from (57) that, still under the assumption that $\|m \star |\cdot|^{-1}\|_{L^2+\mathcal{C}'} < \beta$,

$$\int_{\mathbb{R}^3} m - \int_{\mathbb{R}^3} \rho_{m,\varepsilon_F^0} = \frac{\int_{\mathbb{R}^3} m}{1+L_0}.$$

This quantity can be interpreted as the renormalized charge of the defect, which differs from the bare charge $\int_{\mathbb{R}^3} m - \text{Tr}_0(Q_{m,\varepsilon_F^0}) = \int_{\mathbb{R}^3} m$ by a screening factor $\frac{1}{1+L_0}$. This is formally similar to the charge renormalization phenomenon observed in QED (see [17] for a mathematical analysis).

4.3 Dielectric operator and macroscopic dielectric permittivity

In this section, we focus again on the total potential

$$V_m = (m - \rho_{m,\varepsilon_F^0}) \star |\cdot|^{-1} \quad (58)$$

generated by the total charge of the defect, but we study it in a certain macroscopic limit.

For this purpose, we fix some $m \in L^1(\mathbb{R}^3) \cap L^2(\mathbb{R}^3)$ and introduce for all $\eta > 0$ the rescaled density

$$m_\eta(\mathbf{r}) := \eta^3 m(\eta \mathbf{r}).$$

We then denote by V_m^η the total potential generated by m_η and the corresponding electronic polarization, *i.e.*

$$V_m^\eta := (m_\eta - \rho_{m_\eta,\varepsilon_F^0}) \star |\cdot|^{-1}, \quad (59)$$

and define the rescaled potential

$$W_m^\eta(\mathbf{r}) := \eta^{-1} V_m^\eta(\eta^{-1} \mathbf{r}). \quad (60)$$

The scaling parameters have been chosen in a way such that in the absence of dielectric response (*i.e.* for $\mathcal{L} = 0$ and $\tilde{\rho}_{Q_{2,-v_m^\eta}} = 0$), it holds $W_m^\eta = v_c(m) = m \star |\cdot|^{-1}$ for all $\eta > 0$. To obtain a macroscopic limit, we let η go to zero.

As $\|(m_\eta \star |\cdot|^{-1})\|_{\mathcal{C}'} = \|m_\eta\|_{\mathcal{C}} = \eta^{1/2}\|m\|_{\mathcal{C}}$, we can apply the results of the previous sections as soon as η is small enough. Introducing the family of scaling operators $(U_\eta)_{\eta>0}$ defined by $(U_\eta f)(\mathbf{r}) = \eta^{3/2}f(\eta\mathbf{r})$ (each U_η is a bijective isometry of $L^2(\mathbb{R}^3)$), the equation linking the density of charge m to the rescaled potential W_m^η reads

$$W_m^\eta = v_c^{1/2} U_\eta^* \tilde{\varepsilon}^{-1} U_\eta v_c^{1/2} m + \tilde{w}_m^\eta, \quad (61)$$

where the nonlinear contribution \tilde{w}_m^η is such that there exists $C \in \mathbb{R}_+$ such that for η small enough, $\|\tilde{w}_m^\eta\|_{\mathcal{C}'} \leq C\eta$. The macroscopic limit of W_m^η therefore is governed by the linear response term, and is obtained as the limit when η goes to zero of the family $(U_\eta^* \tilde{\varepsilon}^{-1} U_\eta)_{\eta>0}$ of bounded self-adjoint operators on $L^2(\mathbb{R}^3)$.

If $\tilde{\varepsilon}^{-1}$ was translation invariant, that is, if it was commuting with all the translations $\tau_{\mathbf{R}}$ for $\mathbf{R} \in \mathbb{R}^3$, it would be a multiplication operator in the Fourier space (*i.e.* such that for all $f \in L^2(\mathbb{R}^3)$, $(\tilde{\varepsilon}^{-1} f)(\mathbf{k}) = \tilde{\varepsilon}^{-1}(\mathbf{k})f(\mathbf{k})$ for some function $\mathbb{R}^3 \ni \mathbf{k} \mapsto \tilde{\varepsilon}^{-1}(\mathbf{k}) \in \mathbb{C}$). Using the fact that the operator $v_c^{1/2}$ is the multiplication operator by $(4\pi)^{1/2}/|\mathbf{k}|$ in the Fourier space, we would obtain in the limit

$$\lim_{\eta \rightarrow 0^+} \left(\frac{|\mathbf{k}|^2}{\tilde{\varepsilon}^{-1}(\eta\mathbf{k})} \right) \widehat{W}_m(\mathbf{k}) = 4\pi \widehat{m}(\mathbf{k}).$$

As the operator $\tilde{\varepsilon}^{-1}$ actually commutes only with the translations of the lattice \mathcal{R} , the above argument cannot be applied. On the other hand, it can be proved, using Bloch-Floquet decomposition, that W_m^η has a limit W_m when η goes to zero, and that this limit satisfies

$$\lim_{\eta \rightarrow 0^+} \left(\frac{|\mathbf{k}|^2}{[\tilde{\varepsilon}^{-1}]_{00}(\eta\mathbf{k})} \right) \widehat{W}_m(\mathbf{k}) = 4\pi \widehat{m}(\mathbf{k}), \quad (62)$$

where $[\tilde{\varepsilon}^{-1}]_{00}(\mathbf{q})$ is the entry of the Bloch matrix of the \mathcal{R} -periodic operator $\tilde{\varepsilon}^{-1}$ corresponding to $\mathbf{K} = \mathbf{K}' = 0$. Besides,

$$\lim_{\eta \rightarrow 0^+} \left(\frac{|\mathbf{k}|^2}{[\tilde{\varepsilon}^{-1}]_{00}(\eta\mathbf{k})} \right) = \mathbf{k}^T \varepsilon_M \mathbf{k}, \quad (63)$$

where ε_M is a 3×3 symmetric, positive definite matrix. Transforming back (62) in the physical space, we obtain the macroscopic Poisson equation (4). Let us formalize this central result in a theorem.

Theorem 2. *There exists a 3×3 symmetric matrix $\varepsilon_M \geq 1$ such that for all $m \in L^1(\mathbb{R}^3) \cap L^2(\mathbb{R}^3)$, the rescaled potential W_m^η defined by (60) converges to W_m weakly in \mathcal{C}' when η goes to zero, where W_m is the unique solution in \mathcal{C}' to the elliptic equation*

$$-\operatorname{div}(\varepsilon_M \nabla W_m) = 4\pi m.$$

The matrix ε_M is proportional to the identity matrix if the host crystal has the symmetry of the cube.

From a physical viewpoint, the matrix ε_M is the electronic contribution to the macroscopic dielectric tensor of the host crystal. Note that the other contribution, originating from the displacements of the nuclei [29], is not taken into account in this study.

The matrix ε_M can be computed from the Bloch-Floquet decomposition of H_{per}^0 as follows. The operator $\tilde{\varepsilon} = v_c^{-1/2} \varepsilon v_c^{1/2}$ being \mathcal{B} -periodic, it can be represented by the Bloch matrices $([\tilde{\varepsilon}_{\mathbf{K}\mathbf{K}'}(\mathbf{q})]_{\mathbf{K},\mathbf{K}' \in \mathcal{R}^*})_{\mathbf{q} \in \Gamma^*}$. It is proven in [9] that each entry of the Bloch matrix $\tilde{\varepsilon}_{\mathbf{K},\mathbf{K}'}(\eta\sigma)$ has a limit when η goes to 0^+ for all fixed $\sigma \in S^2$. Indeed,

$$\lim_{\eta \rightarrow 0^+} \tilde{\varepsilon}_{0,0}(\eta\sigma) = 1 + \sigma^T L \sigma$$

where L is the 3×3 non-negative symmetric matrix defined in (54). When $\mathbf{K}, \mathbf{K}' \neq 0$, $\tilde{\varepsilon}_{\mathbf{K},\mathbf{K}'}(\eta\sigma)$ has a limit at $\eta = 0$, which is independent of σ and which we simply denote by $\tilde{\varepsilon}_{\mathbf{K},\mathbf{K}'}(0)$. When $\mathbf{K} = 0$ but $\mathbf{K}' \neq 0$, the limit is a linear function of σ : for all $\mathbf{K}' \in \mathcal{R}^* \setminus \{0\}$,

$$\lim_{\eta \rightarrow 0^+} \tilde{\varepsilon}_{0,\mathbf{K}'}(\eta\sigma) = \beta_{\mathbf{K}'} \cdot \sigma,$$

for some $\beta_{\mathbf{K}'} \in \mathbb{C}^3$. Both $\tilde{\varepsilon}_{\mathbf{K}\mathbf{K}'}(0)$ ($\mathbf{K}, \mathbf{K}' \neq 0$) and $\beta_{\mathbf{K}}$ can be computed from the eigenvalues $\varepsilon_{n,\mathbf{q}}$ and eigenvectors $u_{n,\mathbf{q}}$ of the Bloch-Floquet decomposition of H_{per}^0 by formulae similar to (54). As already mentioned, the electronic contribution to the macroscopic dielectric permittivity is the 3×3 symmetric tensor defined as [6]

$$\forall \mathbf{k} \in \mathbb{R}^3, \quad \mathbf{k}^T \varepsilon_M \mathbf{k} = \lim_{\eta \rightarrow 0^+} \frac{|\mathbf{k}|^2}{[\tilde{\varepsilon}^{-1}]_{00}(\eta\mathbf{k})}. \quad (64)$$

By the Schur complement formula, it holds

$$\frac{1}{[\tilde{\varepsilon}^{-1}]_{00}(\eta\mathbf{k})} = \tilde{\varepsilon}_{00}(\eta\mathbf{k}) - \sum_{\mathbf{K}, \mathbf{K}' \neq 0} \tilde{\varepsilon}_{0,\mathbf{K}}(\eta\mathbf{k}) [C(\eta\mathbf{k})^{-1}]_{\mathbf{K},\mathbf{K}'} \tilde{\varepsilon}_{\mathbf{K}',0}(\eta\mathbf{k})$$

where $C(\eta\mathbf{k})^{-1}$ is the inverse of the matrix $C(\eta\mathbf{k}) = [\tilde{\varepsilon}_{\mathbf{K}\mathbf{K}'}(\eta\mathbf{k})]_{\mathbf{K},\mathbf{K}' \in \mathcal{R}^* \setminus \{0\}}$. This leads to

$$\lim_{\eta \rightarrow 0^+} \frac{|\mathbf{k}|^2}{[\tilde{\varepsilon}^{-1}]_{00}(\eta\mathbf{k})} = |\mathbf{k}|^2 + \mathbf{k}^T L \mathbf{k} - \sum_{\mathbf{K}, \mathbf{K}' \in \mathcal{R}^* \setminus \{0\}} (\beta_{\mathbf{K}} \cdot \mathbf{k}) [C(0)^{-1}]_{\mathbf{K},\mathbf{K}'} \overline{(\beta_{\mathbf{K}'} \cdot \mathbf{k})}$$

where $C(0)^{-1}$ is the inverse of the matrix $C(0) = [\tilde{\varepsilon}_{\mathbf{K}\mathbf{K}'}(0)]_{\mathbf{K},\mathbf{K}' \in \mathcal{R}^* \setminus \{0\}}$. Therefore,

$$\varepsilon_M = 1 + L - \sum_{\mathbf{K}, \mathbf{K}' \in \mathcal{R}^* \setminus \{0\}} \beta_{\mathbf{K}} [C(0)^{-1}]_{\mathbf{K},\mathbf{K}'} \beta_{\mathbf{K}'}^*. \quad (65)$$

As already noticed in [6], it holds

$$1 \leq \varepsilon_M \leq 1 + L.$$

Formula (65) has been used in numerical simulations for estimating the macroscopic dielectric permittivity of real insulators and semiconductors [6, 22, 23, 14, 16]. Direct methods for evaluating ε_M , bypassing the inversion of the matrix $C(0)$, have also been proposed [32, 25].

4.4 Time-dependent response

We study in this section the variation of the electronic state of the crystal when the mean-field Hamiltonian H_{per}^0 of the perfect crystal is perturbed by a time-dependent effective potential $v(t, \mathbf{r})$ of the form (46). The mathematical proofs of the results announced in this section will be given in [10].

Let

$$H_v(t) = H_{\text{per}}^0 + v(t, \cdot) = -\frac{1}{2}\Delta + V_{\text{per}} + v(t, \cdot).$$

Under the assumption that $\rho_{\text{per}}^{\text{nuc}} \in L_{\text{per}}^2(\Gamma)$ (smeared nuclei), the mean-field potential V_{per} is \mathcal{R} -periodic and in $C^0(\mathbb{R}^3) \cap L^\infty(\mathbb{R}^3)$. Besides, there exists a constant $C > 0$ such that $\|\rho \star |\cdot|^{-1}\|_{L^\infty} \leq C\|\rho\|_{L^2 \cap \mathcal{C}}$ for all $\rho \in L^2(\mathbb{R}^3) \cap \mathcal{C}$, so that the time-dependent perturbation v belongs to $L_{\text{loc}}^1(\mathbb{R}, L^\infty(\mathbb{R}^3))$.

Let us now define the propagator $(U_v(t, s))_{(s,t) \in \mathbb{R} \times \mathbb{R}}$ associated with the time-dependent Hamiltonian $H_v(t)$ following [30, Section X.12]. To this end, consider first the propagator $U_0(t) = e^{-itH_{\text{per}}^0}$ associated with the time-independent Hamiltonian H_{per}^0 , and the perturbation in the so-called interaction picture:

$$v_{\text{int}}(t) = U_0(t)^* v(t) U_0(t).$$

Standard techniques (see for instance [28, Section 5.1]) allow to show the existence and uniqueness of the family of unitary propagators $(U_{\text{int}}(t, s))_{(s,t) \in \mathbb{R} \times \mathbb{R}}$ associated with the bounded operators $(v_{\text{int}}(t))_{t \in \mathbb{R}}$, with

$$U_{\text{int}}(t, t_0) = 1 - i \int_{t_0}^t v_{\text{int}}(s) U_{\text{int}}(s, t_0) ds.$$

Therefore, $U_v(t, s) = U_0(t) U_{\text{int}}(t, s) U_0(s)^*$ satisfies the integral equation

$$U_v(t, t_0) = U_0(t - t_0) - i \int_{t_0}^t U_0(t - s) v(s) U_v(s, t_0) ds. \quad (66)$$

Denoting by γ^0 the density operator of the crystal at time $t = 0$, the dynamics of the system is governed by the evolution equation

$$\gamma(t) = U_v(t, 0)\gamma^0 U_v(t, 0)^*. \quad (67)$$

Note that the conditions $\gamma^0 \in \mathcal{S}(L^2(\mathbb{R}^3))$ and $0 \leq \gamma^0 \leq 1$ are automatically propagated by (67).

Considering $v(t)$ as a perturbation of the time-independent Hamiltonian H_{per}^0 , and $\gamma(t)$ as a perturbation of the ground state density operator γ_{per}^0 , it is natural to follow the same strategy as in the time-independent setting and introduce

$$Q(t) = \gamma(t) - \gamma_{\text{per}}^0.$$

Using (66), (67), and the fact that γ_{per}^0 is a steady state of the system in the absence of perturbation ($U_0(t)\gamma_{\text{per}}^0 U_0(t)^* = \gamma_{\text{per}}^0$), an easy calculation shows that $Q(t)$ satisfies the integral equation

$$Q(t) = U_0(t)Q(0)U_0(t)^* - i \int_0^t U_0(t-s)[v(s), \gamma_{\text{per}}^0 + Q(s)]U_0(t-s)^* ds. \quad (68)$$

We now assume that $\gamma^0 = \gamma_{\text{per}}^0$, *i.e.* $Q(0) = 0$, and write (formally for the moment) $Q(t)$ as the series expansion

$$Q(t) = \sum_{n=1}^{+\infty} Q_{n,v}(t), \quad (69)$$

where the operators $Q_{n,v}(t)$ are obtained, as in the time-independent case, by identifying terms involving n occurrences of the potential v . In particular, the linear response is given by

$$Q_{1,v}(t) = -i \int_0^t U_0(t-s)[v(s), \gamma_{\text{per}}^0]U_0(t-s)^* ds, \quad (70)$$

and the following recursion relation holds true

$$\forall n \geq 2, \quad Q_{n,v}(t) = -i \int_0^t U_0(t-s)[v(s), Q_{n-1,v}(s)]U_0(t-s)^* ds. \quad (71)$$

It is proved in [10] that for any $n \geq 1$ and any $t \geq 0$, the operator $Q_{n,v}(t)$ in (69) belongs to \mathcal{Q} and satisfies

$$\forall \psi \in L^2(\mathbb{R}^3), \quad \langle \psi | Q_{n,v}(t) | \psi \rangle_{L^2} = 0.$$

In particular, $\text{Tr}_0(Q_{n,v}(t)) = 0$. Besides, there exists $b \in \mathbb{R}_+$ such that for all $t \geq 0$

$$\|Q_{n,v}(t)\|_{\mathcal{Q}} \leq b^n \int_0^t \int_0^{t_1} \dots \int_0^{t_{n-1}} \|\rho(t_1)\|_{L^2 \cap \mathcal{E}} \dots \|\rho(t_n)\|_{L^2 \cap \mathcal{E}} dt_n \dots dt_1,$$

and there exists $T > 0$ such that the series expansion (69) converges in \mathcal{Q} uniformly on any compact subset of $[0, T)$. Lastly, $T = +\infty$ if $\rho \in L^\infty(\mathbb{R}_+, L^2(\mathbb{R}^3) \cap \mathcal{C})$.

As in the time-independent setting, the frequency-dependent dielectric properties of the crystal can be obtained from the linear response (70), by defining the time-dependent independent-particle polarization operator

$$\chi_0 : L^1(\mathbb{R}, v_c(L^2(\mathbb{R}^3) \cap \mathcal{C})) \rightarrow L^\infty(\mathbb{R}, L^2(\mathbb{R}^3) \cap \mathcal{C}) \quad (72)$$

$$v \mapsto \rho_{Q_{1,v}}$$

and the time-dependent operators $\mathcal{L} = -\chi_0 v_c$, $\varepsilon = v_c(1 + \mathcal{L})v_c^{-1}$, $\varepsilon^{-1} = v_c(1 + \mathcal{L})^{-1}v_c^{-1}$, and $\tilde{\varepsilon} = v_c^{-1/2}\varepsilon v_c^{1/2}$. Due to the invariance of the linear response with respect to translation in time, all these operators are convolutions in time. In addition they are \mathcal{R} -periodic in space. They can therefore be represented by frequency-dependent Bloch matrices $[T_{\mathbf{K}, \mathbf{K}'}(\omega, \mathbf{q})]$, with \mathbf{K}, \mathbf{K}' in \mathcal{R}^* , $q \in \Gamma^*$ and $\omega \in \mathbb{R}$. The Adler-Wiser formula states that the (electronic contribution of the) frequency-dependent macroscopic dielectric permittivity is given by the formula

$$\forall \mathbf{k} \in \mathbb{R}^3, \quad \mathbf{k}^T \mathcal{F} \varepsilon_M(\omega) \mathbf{k} = \lim_{\eta \rightarrow 0^+} \left(\frac{|\mathbf{k}|^2}{[\tilde{\varepsilon}^{-1}]_{00}(\omega, \eta \mathbf{k})} \right).$$

The mathematical study of this formula and of its possible derivation from rigorous homogenization arguments, is work in progress.

We finally consider the self-consistent Hartree dynamics defined by

$$Q(t) = U_0(t) Q^0 U_0(t)^* - i \int_0^t U_0(t-s) \left[v(s) + v_c(\rho_{Q(s)}), \gamma_{\text{per}}^0 + Q(s) \right] U_0(t-s)^* ds, \quad (73)$$

for an initial condition $Q^0 \in \mathcal{K}$, and for an external potential $v(t) = v_c(m(t))$, where $m(t) \in L^2(\mathbb{R}^3) \cap \mathcal{C}$ for all t . The solution $Q(t)$ of (73) is such that $\gamma(t) = \gamma_{\text{per}}^0 + Q(t)$ satisfies, formally, the time-dependent Hartree equation

$$i \frac{d\gamma}{dt}(t) = \left[-\frac{1}{2} \Delta + (\rho_{\gamma(t)} - \rho_{\text{per}}^{\text{nuc}} - m(t)) \star |\cdot|^{-1}, \gamma(t) \right].$$

The following result [10] shows the well-posedness of the nonlinear Hartree dynamics.

Theorem 3. *Let $m \in C^1(\mathbb{R}_+, L^2(\mathbb{R}^3) \cap \mathcal{C})$. Then, for any $Q^0 \in \mathcal{K}$, the time-dependent Hartree equation (73) has a unique solution in $C^0(\mathbb{R}_+, \mathcal{Q})$. Besides, for all $t \geq 0$, $Q(t) \in \mathcal{K}$ and $\text{Tr}_0(Q(t)) = \text{Tr}_0(Q^0)$.*

Appendix: trace-class and self-adjoint operators

It is well-known that any compact self-adjoint operator A on a separable Hilbert space \mathcal{H} can be diagonalized in an orthonormal basis set:

$$A = \sum_{i=1}^{+\infty} \lambda_i |\phi_i\rangle \langle \phi_i|, \quad (74)$$

where $\langle \phi_i | \phi_j \rangle = \delta_{ij}$, and where the sequence $(\lambda_i)_{i \geq 1}$ of the (real) eigenvalues of A , counted with their multiplicities, converges to zero. We have formulated (74) using again Dirac's bra-ket notation. The conventional mathematical formulation for (74) reads

$$\forall \phi \in \mathcal{H}, \quad A\phi = \sum_{i=1}^{+\infty} \lambda_i \langle \phi_i | \phi \rangle \phi_i.$$

A compact self-adjoint operator A is called trace-class if

$$\sum_{i=1}^{+\infty} |\lambda_i| < \infty.$$

The trace of A is then defined as

$$\mathrm{Tr}(A) := \sum_{i=1}^{+\infty} \lambda_i = \sum_{i=1}^{+\infty} \langle e_i | A | e_i \rangle,$$

the right-hand side being independent of the choice of the orthonormal basis $(e_i)_{i \geq 1}$. Note that if A is a non-negative self-adjoint operator, the sum $\sum_{i=1}^{+\infty} \langle e_i | A | e_i \rangle$ makes sense in $\mathbb{R}_+ \cup \{+\infty\}$ and its value is independent of the choice of the orthonormal basis $(e_i)_{i \geq 1}$. We can therefore give a sense to $\mathrm{Tr}(A)$ for *any* non-negative self-adjoint operator A , and this number is finite if and only if A is trace-class.

The notion of trace-class operators can be extended to non-self-adjoint operators [31, 33], but we do not need to consider this generalization here.

By definition, a compact operator A is Hilbert-Schmidt if A^*A is trace-class. A compact self-adjoint operator A on \mathcal{H} decomposed according to (74) is Hilbert-Schmidt if and only if

$$\sum_{i \geq 1} |\lambda_i|^2 < \infty.$$

Obviously any trace-class self-adjoint operator is Hilbert-Schmidt, but the converse is not true.

In this contribution, we respectively denote by \mathfrak{S}_1 and \mathfrak{S}_2 the spaces of trace-class and Hilbert-Schmidt operators acting on $L^2(\mathbb{R}^3)$. We also denote by $\mathcal{S}(L^2(\mathbb{R}^3))$ the vector space of the bounded self-adjoint operators on $L^2(\mathbb{R}^3)$.

A classical result states that if A is a Hilbert-Schmidt operator on $L^2(\mathbb{R}^3)$, then it is an integral operator with kernel in $L^2(\mathbb{R}^3 \times \mathbb{R}^3)$. This means that there exists a unique function in $L^2(\mathbb{R}^3 \times \mathbb{R}^3)$, also denoted by A for convenience, such that

$$\forall \phi \in L^2(\mathbb{R}^3), \quad (A\phi)(\mathbf{r}) = \int_{\mathbb{R}^3} A(\mathbf{r}, \mathbf{r}') \phi(\mathbf{r}') d\mathbf{r}'. \quad (75)$$

Conversely, if A is an operator on $L^2(\mathbb{R}^3)$ for which there exists a function $A \in L^2(\mathbb{R}^3 \times \mathbb{R}^3)$ such that (75) holds, then A is Hilbert-Schmidt.

If A is a self-adjoint Hilbert-Schmidt operator on $L^2(\mathbb{R}^3)$ decomposed according to (74), then its kernel is given by

$$A(\mathbf{r}, \mathbf{r}') = \sum_{i \geq 1} \lambda_i \phi_i(\mathbf{r}) \phi_i(\mathbf{r}').$$

If, in addition A is trace-class, then the density ρ_A , defined as

$$\rho_A(\mathbf{r}) = \sum_{i=1}^{+\infty} \lambda_i |\phi_i(\mathbf{r})|^2,$$

is a function of $L^1(\mathbb{R}^3)$ and it holds

$$\text{Tr}(A) = \sum_{i=1}^{+\infty} \lambda_i = \int_{\mathbb{R}^3} \rho_A(\mathbf{r}) d\mathbf{r}.$$

For convenience, we use the abuse of notation which consists in writing $\rho_A(\mathbf{r}) = A(\mathbf{r}, \mathbf{r})$ even when the kernel of A is not continuous on the diagonal $\{\mathbf{r} = \mathbf{r}'\} \subset \mathbb{R}^6$.

References

1. Adler, S.L.: Quantum theory of the dielectric constant in real solids. *Phys. Rev.* **126**, 413–420 (1962)
2. Ambrosio, L., Friesecke, G. Giannoulis, J.: Passage from quantum to classical molecular dynamics in the presence of Coulomb interactions. *Commun. Part. Diff. Eq.* **35**, 1490–1515 (2010)
3. Ambrosio, L., Figalli, A., Friesecke, G. Giannoulis, J., Paul, T.: Semiclassical limit of quantum dynamics with rough potentials and well posedness of transport equations with measure initial data. arXiv:1006.5388v1 (2010)
4. Anantharaman, A., Cancès, É.: Existence of minimizers for Kohn-Sham models in quantum chemistry. *Ann. I. H. Poincaré-An* **26**, 2425–2455 (2009)
5. Arnold, A.: Self-consistent relaxation-time models in quantum mechanics, *Commun. Part. Diff. Eq.*, **21**(3-4), 473–506 (1996)
6. Baroni, S., Resta, R.: Ab initio calculation of the macroscopic dielectric constant in silicon. *Phys. Rev. B* **33**, 7017–7021 (1986)
7. Cancès, É., Deleurence, A., Lewin, M.: A new approach to the modelling of local defects in crystals: the reduced Hartree-Fock case. *Commun. Math. Phys.* **281**, 129–177 (2008)
8. Cancès, É., Deleurence, A., Lewin, M.: Non-perturbative embedding of local defects in crystalline materials. *J. Phys.: Condens. Mat.* **20**, 294213 (2008)
9. Cancès, É., Lewin, M.: The dielectric permittivity of crystals in the reduced Hartree-Fock approximation. *Arch. Ration. Mech. Anal.* **197**, 139–177 (2010)
10. Cancès, É., Stoltz, G.: in preparation
11. Catto, I, Le Bris, C., Lions, P.-L.: On the thermodynamic limit for Hartree-Fock type models. *Ann. I. H. Poincaré-An* **18**, 687–760 (2001)

12. Dautray, R. and Lions, J.-L. *Mathematical Analysis and Numerical Methods for Science and Technology. Vol. 5. Evolution Problems I.* Springer-Verlag Berlin (1992)
13. Dreizler, R., Gross, E.K.U.: *Density functional theory.* Springer Verlag, Berlin (1990)
14. Engel, G. E., Farid, B.: Calculation of the dielectric properties of semiconductors. *Phys. Rev. B* **46**, 15812–15827 (1992)
15. Frank, R.L., Lieb, E.H., Seiringer, R., Siedentop, H.: Müllers exchange-correlation energy in density-matrix-functional theory. *Phys. Rev. A* **76**, 052517 (2007)
16. Gajdoš, M., Hummer, K., Kresse, G., Furthmüller, J., Bechstedt, F.: Linear optical properties in the projector-augmented wave methodology. *Phys. Rev. B* **73**, 045112 (2006)
17. Gravejat, P., Lewin, M., Séré, É.: Ground state and charge renormalization in a nonlinear model of relativistic atoms. *Commun. Math. Phys.* **286**, 179–215 (2009)
18. Hainzl, C., Lewin, M., Séré, É.: Existence of a stable polarized vacuum in the Bogoliubov-Dirac-Fock approximation. *Commun. Math. Phys.* **257**, 515–562 (2005)
19. Hainzl, C., Lewin, M., Séré, E., Solovej, J.P.: A minimization method for relativistic electrons in a mean-field approximation of quantum electrodynamics. *Phys. Rev. A* **76**, 052104 (2007)
20. Hainzl, C., Lewin, M., Solovej, J.P.: The mean-field approximation in Quantum Electrodynamics: the no-photon case. *Commun. Pur. Appl. Math.* **60**(4), 546–596 (2007)
21. Hohenberg, P., Kohn, W.: Inhomogeneous electron gas. *Phys. Rev.* **136**, B864-B871 (1964)
22. Hybertsen, M.S., Louie, S.G.: Ab initio static dielectric matrices from the density-functional approach. I. Formulation and application to semiconductors and insulators. *Phys. Rev. B* **35**, 5585–5601 (1987)
23. Hybertsen, M.S., Louie, S.G.: Ab initio static dielectric matrices from the density-functional approach. II. Calculation of the screening response in diamond, Si, Ge, and LiCl. *Phys. Rev. B* **35**, 5602–5610 (1987)
24. Kohn, W., Sham L. J.: Self-consistent equations including exchange and correlation effects. *Phys. Rev.* **140**, A1133 (1965)
25. Kunc, K., Tosatti, E.: Direct evaluation of the inverse dielectric matrix in semiconductors. *Phys. Rev. B* **29**, 7045–7047 (1984)
26. Lieb E.H.: Variational principle for many-fermion systems. *Phys. Rev. Lett.* **46**, 457–459 (1981)
27. Lieb, E.H.: Density Functional for Coulomb systems. *Int. J. Quantum Chem.* **24**, 243–277 (1983)
28. Pazy A.: *Semigroups of Linear Operators and Applications to Partial Differential Equations*, vol. 44 of *Applied Mathematical Sciences.* Springer, New York (1983)
29. Pick R. M., Cohen, M.H., Martin R. M.: Microscopic theory of force constants in the adiabatic approximation. *Phys. Rev. B* **1**, 910–920 (1970)
30. Reed, M., Simon, B.: *Methods of Modern Mathematical Physics. II. Fourier Analysis, Self-Adjointness.* Academic Press, New York (1975)
31. Reed, M., Simon, B.: *Methods of Modern Mathematical Physics. IV. Analysis of Operators.* Academic Press, New York (1978)
32. Resta, R., Baldereschi, A.: Dielectric matrices and local fields in polar semiconductors. *Phys. Rev. B* **23**, 6615–6624 (1981)
33. Simon, B.: *Trace ideals and their applications*, vol. 35 of *London Mathematical Society Lecture Note Series.* Cambridge University Press, Cambridge (1979)
34. Solovej, J.P.: Proof of the ionization conjecture in a reduced Hartree-Fock model. *Invent. Math.* **104**, 291–311 (1991)
35. Thomas, L.E.: Time dependent approach to scattering from impurities in a crystal. *Commun. Math. Phys.* **33**, 335–343 (1973)
36. Wiser, N.: Dielectric constant with local field effects included. *Phys. Rev.* **129**, 62–69 (1963)
37. Zhislin, G.M., Sigalov, A.G.: The spectrum of the energy operator for atoms with fixed nuclei on subspaces corresponding to irreducible representations of the group of permutations. *Izv. Akad. Nauk SSSR Ser. Mat.* **29**, 835–860 (1965)