



HAL
open science

The French contribution to the atmospheric and cryospheric component of an Arctic Observatory

Hans-Werner Jacobi, Philippe Ciais, Jean-Claude Gascard, Kathy S. Law, Valérie Masson-Delmotte, Jean-Daniel Paris, Marc Delmotte, J.-V. Lavric, Gérard Ancellet, Catherine Ritz, et al.

► **To cite this version:**

Hans-Werner Jacobi, Philippe Ciais, Jean-Claude Gascard, Kathy S. Law, Valérie Masson-Delmotte, et al.. The French contribution to the atmospheric and cryospheric component of an Arctic Observatory. International Polar Year Science Conference, Jun 2010, Oslo, Norway. hal-00526317

HAL Id: hal-00526317

<https://hal.science/hal-00526317v1>

Submitted on 9 Jan 2023

HAL is a multi-disciplinary open access archive for the deposit and dissemination of scientific research documents, whether they are published or not. The documents may come from teaching and research institutions in France or abroad, or from public or private research centers.

L'archive ouverte pluridisciplinaire **HAL**, est destinée au dépôt et à la diffusion de documents scientifiques de niveau recherche, publiés ou non, émanant des établissements d'enseignement et de recherche français ou étrangers, des laboratoires publics ou privés.

H.-W. Jacobi¹ (jacobi@lgge.obs.ujf-grenoble.fr), P. Ciais², Jean Claude Gascard³, Kathy Law⁴, Valerie Masson-Delmotte², J.-D. Paris², M. Delmotte², J.V. Lavric², G. Ancellet⁴, C. Ritz¹, H. Gallée¹, A. Dommergue¹, F. Vivier⁵, A. Weill⁴, N. Huret⁶, S. Payan³,

¹CNRS / University Joseph Fourier – Grenoble 1, LGGE, France; ²LSCE, CEA-CNRS, Paris, France; ³University Pierre et Marie Curie – Paris 6, France; ⁴CNRS / University Versailles, LATMOS, France; ⁵CNRS / University Versailles, LOCEAN, France; ⁶CNRS / University Orléans, LPCE, France; MPI for Biogeochemistry, Jena, Germany

Long-term observations



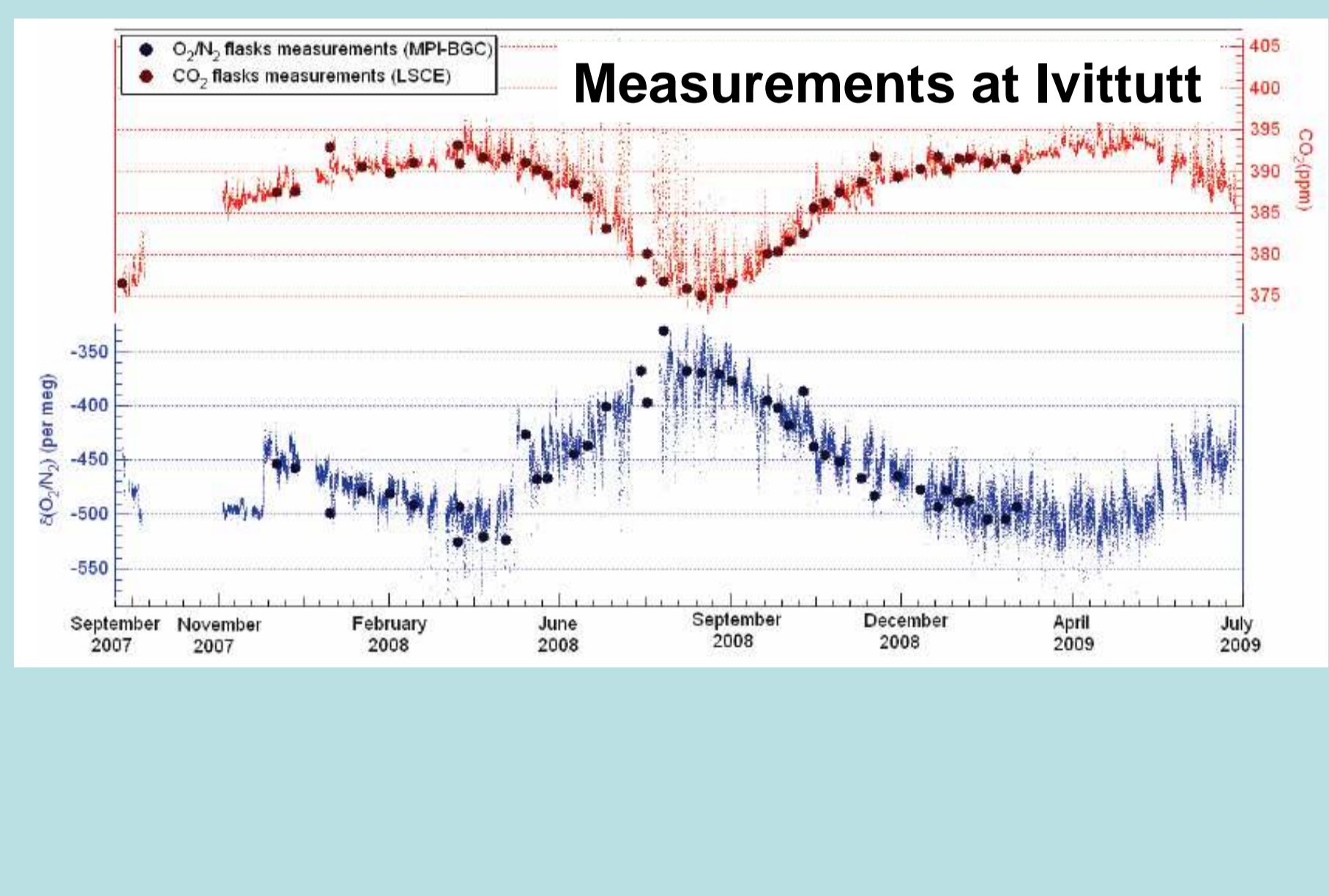
European monitoring network for better understanding of the regional carbon cycle and quantification of emissions

Atmosphere

- Core parameters - continuous (CO₂, CH₄, CO, PBL height, meteorology)
- Core parameters - periodic (flask samples, concentrations and isotopes)
- Additional parameters (N₂O, SF₆, O₂/N₂, Rn-222)

<http://www.icos-infrastructure.eu/>

Cooperation with international partners to extend the network to Siberia and Greenland (Station Nord and Ivittutt)



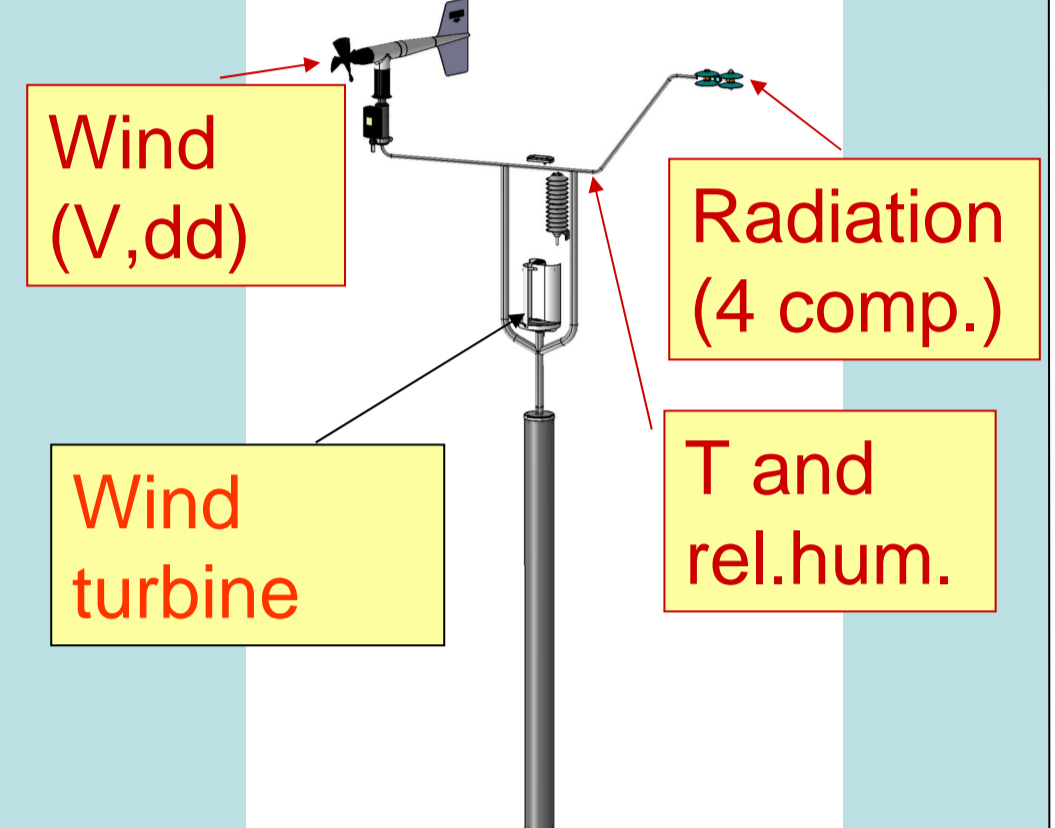
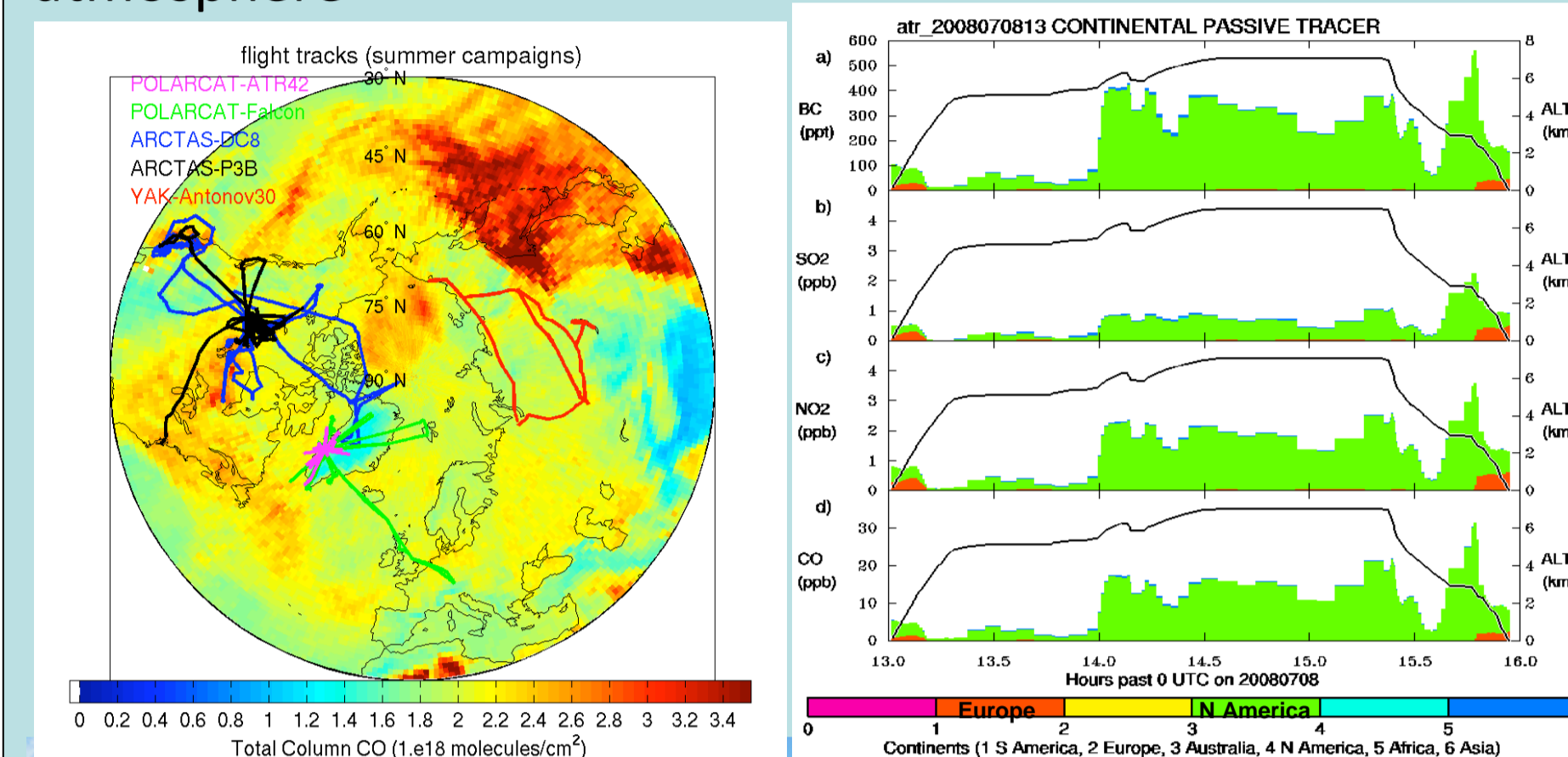
Process studies in the troposphere

Investigation of long-range transport of pollutants to the Arctic, chemical processing in the atmosphere

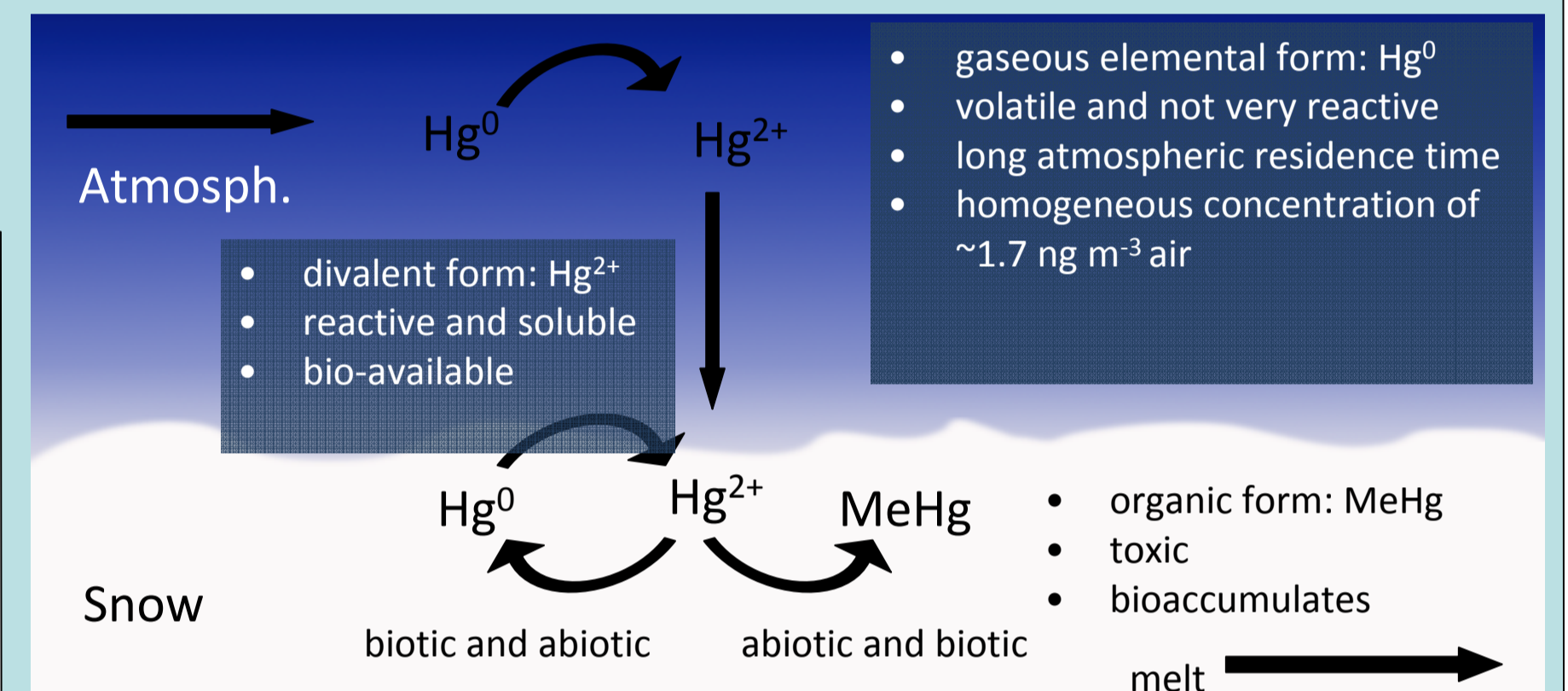
Summer campaign 12 flights over Greenland (30 June to 14 July 2008)



OPTIMISM: the system BEAR for autonomous flux measurements over the Arctic Ocean



Chemical processing of pollutants in the snow



Process studies in the stratosphere

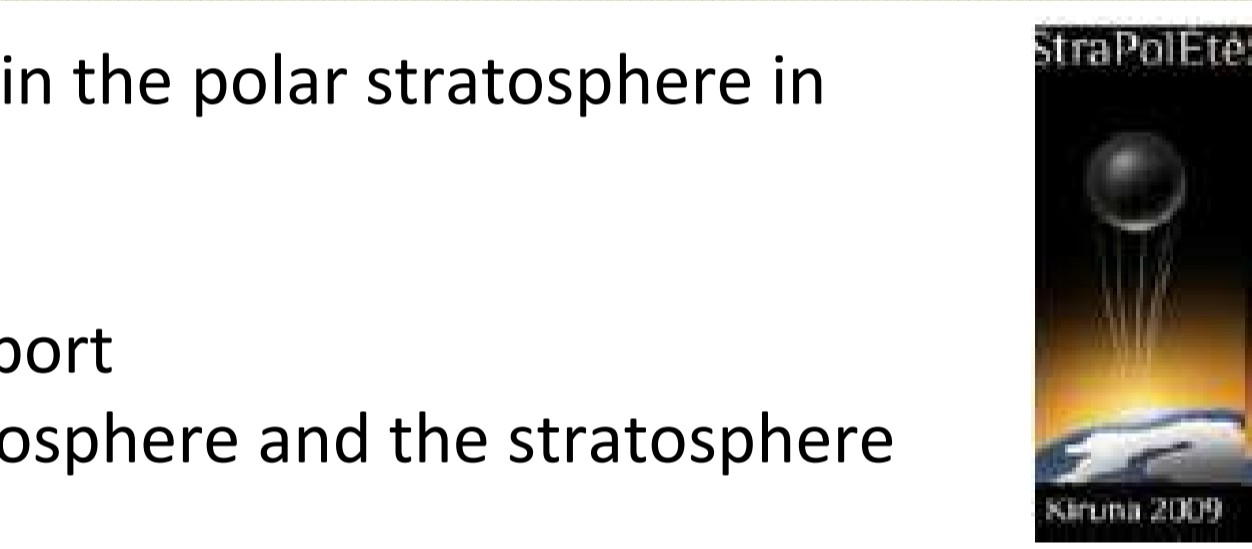
Dynamics, aerosol and bromine in the polar stratosphere in summer

- Investigation of
- the change in large scale transport
- the coupling between the troposphere and the stratosphere
- the aerosol content and the impact on the radiative budget
- bromine species in the stratosphere

payload, SWIR-Balloon : 500kg



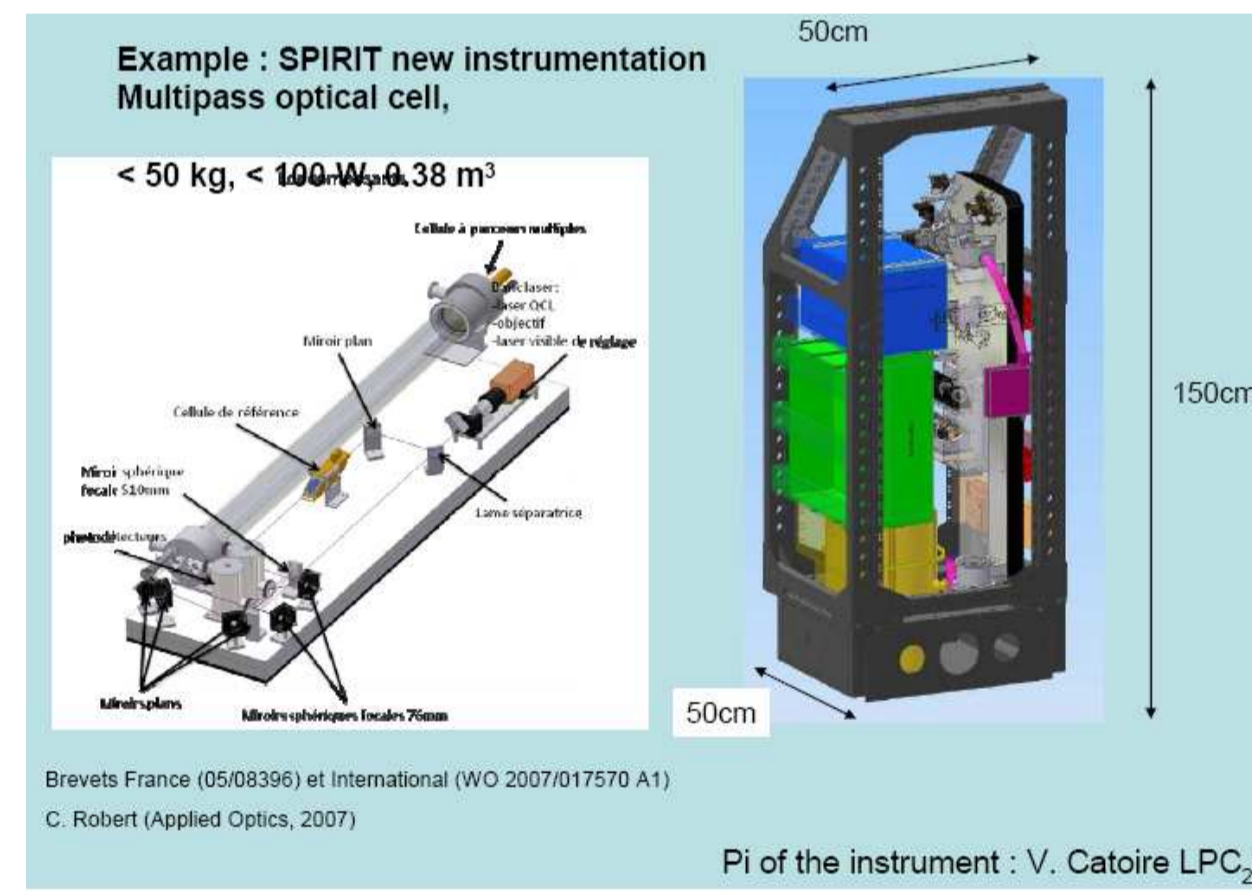
Development of new instrumentation



Balloon-borne instruments involved in the project

Instrument	Measurement technique	Measurements used	Retrieval altitudes provided & vertical resolution
SPIRALE (LPCZE)	In situ Direct infrared absorption	O ₃ , CH ₄ , H ₂ O, HCl, CO, HNO ₂ , NO ₂ , OCS	9km - 35km 5m
SWIR-Balloon (LPCZE)	Remote sensing Infrared radiance and ratio	CO ₂ , CH ₄ , CO, OCS	Partial columns
LPM (LPCZE)	Remote sensing Infrared solar Doublance	O ₃ , HNO ₂ , NO ₂ , CH ₄ , N ₂ O, HCl	15km - 25km 1km
DOAS Univ Heidelberg	Remote sensing UV Solar irradiance	SO ₂	15km - 25km 1km
SALOMONZ (LPCZE)	Remote sensing UV-radiance solar scattering	O ₃ , NO ₂ , BrO, Aerosol extinction	15km - 35km 1 km
STAC (LPCZE)	In situ aerosol counter	Size distribution of aerosols	10km - 25km 10m
MicroRADICAL (LPCZE)	Remote sensing Scattering and polarization by photometry	Nature (liquid, solid), size distribution of aerosols	15km - 25km 1km

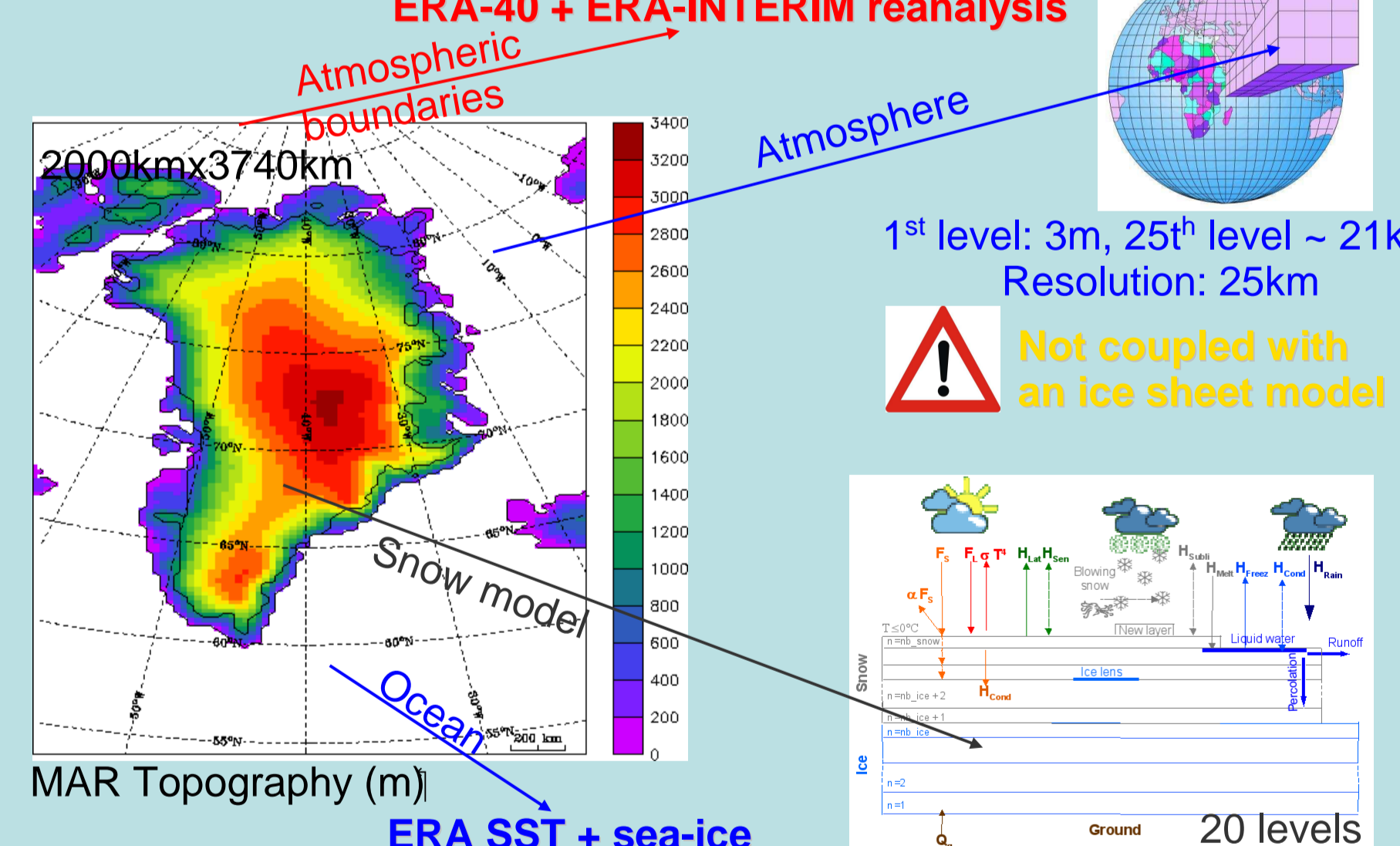
balloon deployment provides : In situ and remote sensing measurements vertical profiles from UT to stratosphere partial column in the troposphere



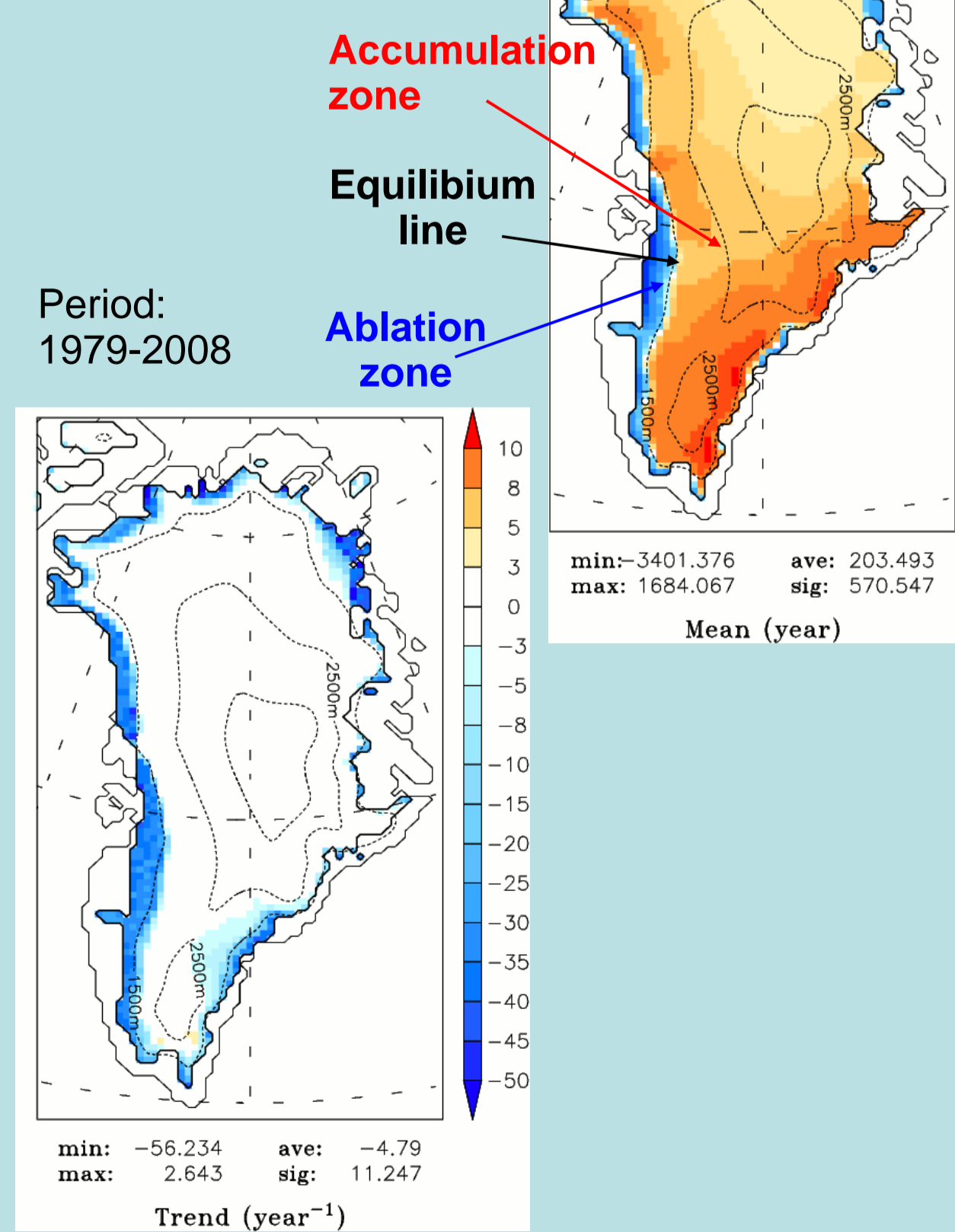
Example : SPIRIT new instrumentation Multipass optical cell, < 50 kg, < 100 W, 0.38 m³

Modeling

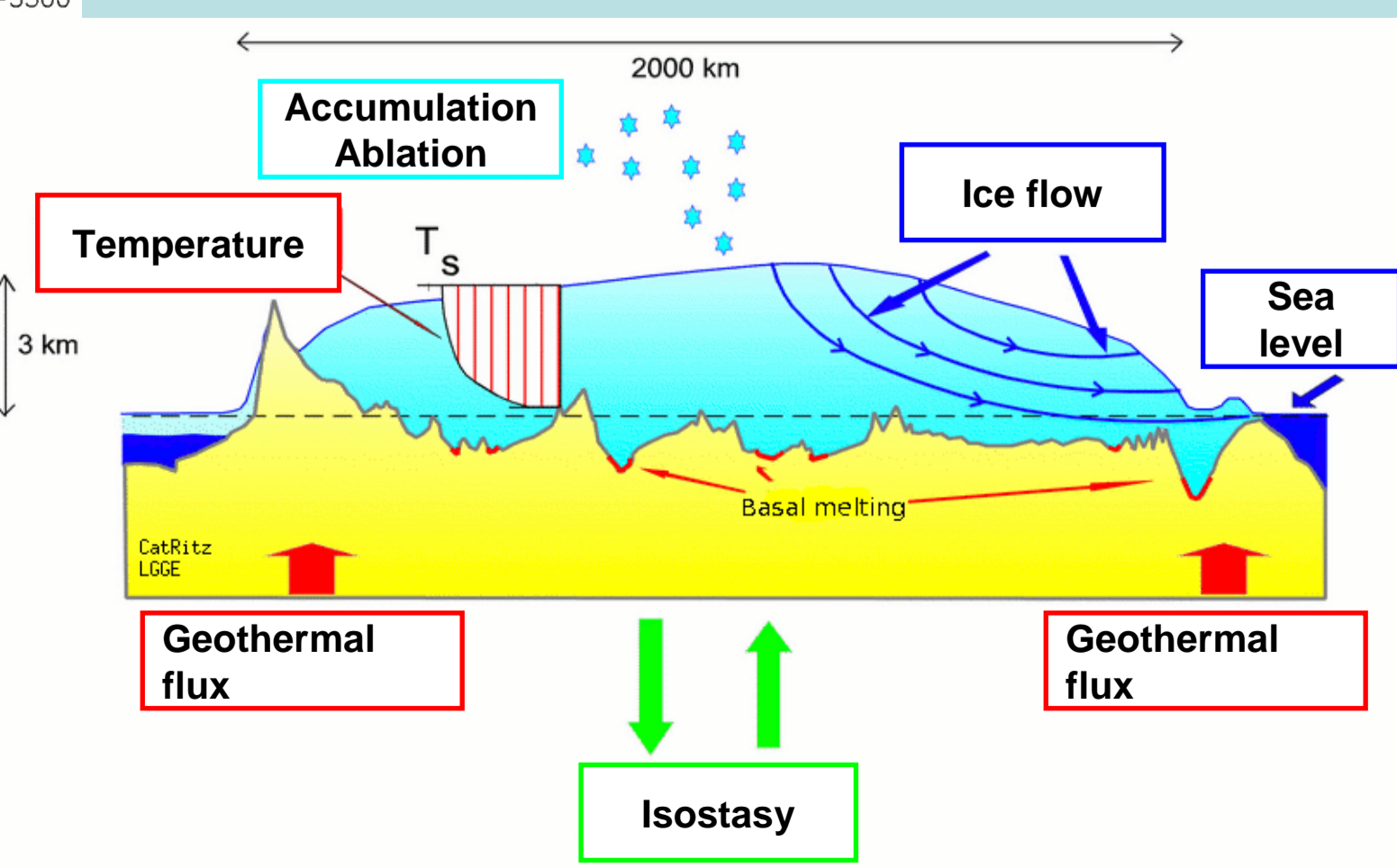
Ice sheet modeling with the regional climate model MAR



Greenland ice sheet surface mass balance



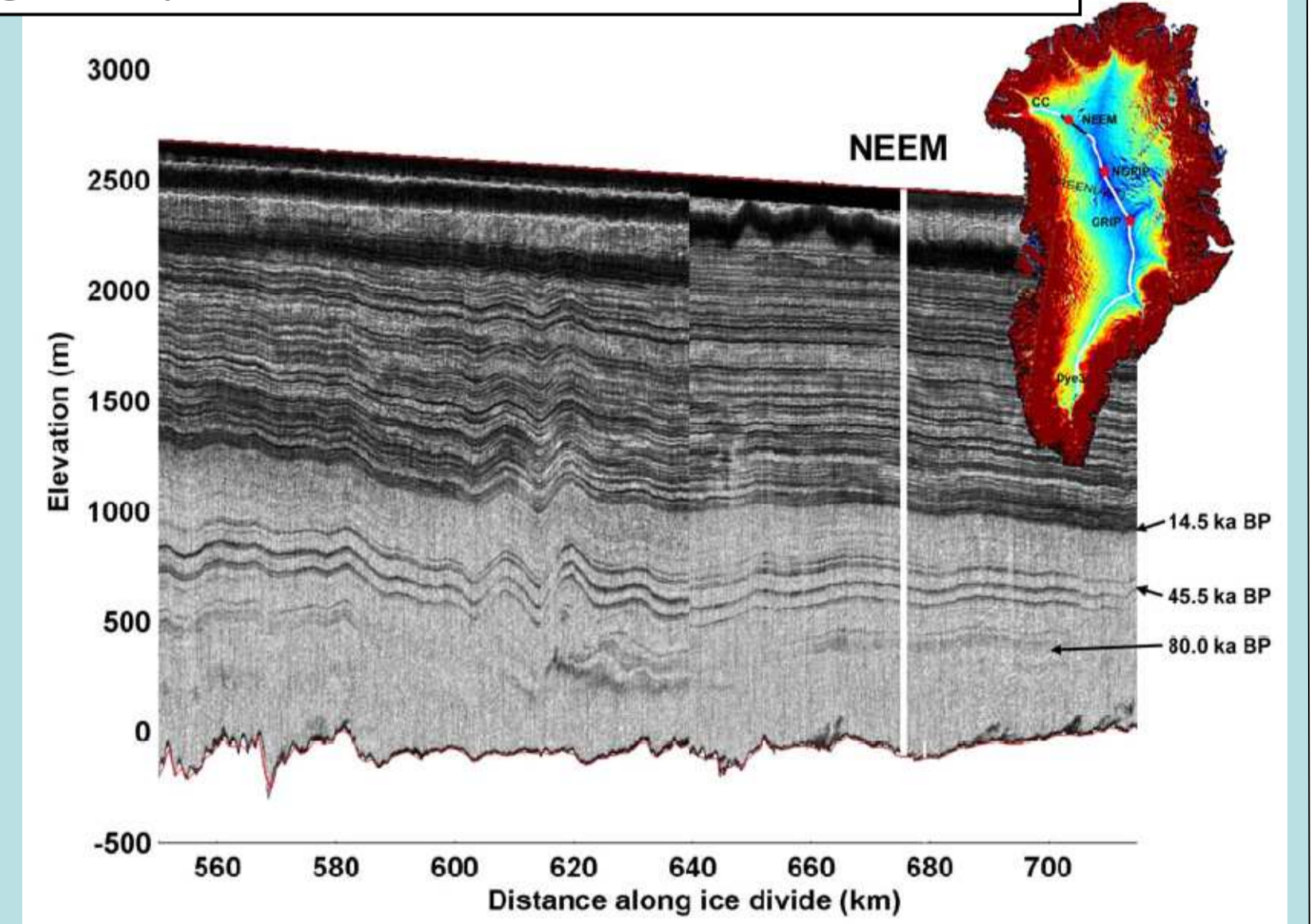
Ice sheet modeling New approach with a high-resolution model including adjusted grid sizes



Paleoclimate

Ice core project NEEM

Objective: Go back more than 130000 years to the last interglacial period



- Depth reached in 2009: 1757.84 m
- covering past 38000 years
- average temperature -28 °C
- accumulation 20 cm WE year⁻¹
- most fresh snow in summer

