



**HAL**  
open science

## Contextualising learning through the participatory construction of an environmental education programme

Isabel Ruiz-Mallen, Laura Barraza, Barbara Bodenhorn, Maria de La Paz Ceja-Adame, Victoria Reyes-García

### ► To cite this version:

Isabel Ruiz-Mallen, Laura Barraza, Barbara Bodenhorn, Maria de La Paz Ceja-Adame, Victoria Reyes-García. Contextualising learning through the participatory construction of an environmental education programme. *International Journal of Science Education*, 2009, 32 (13), pp.1755. 10.1080/09500690903203135 . hal-00520361

**HAL Id: hal-00520361**

**<https://hal.science/hal-00520361>**

Submitted on 23 Sep 2010

**HAL** is a multi-disciplinary open access archive for the deposit and dissemination of scientific research documents, whether they are published or not. The documents may come from teaching and research institutions in France or abroad, or from public or private research centers.

L'archive ouverte pluridisciplinaire **HAL**, est destinée au dépôt et à la diffusion de documents scientifiques de niveau recherche, publiés ou non, émanant des établissements d'enseignement et de recherche français ou étrangers, des laboratoires publics ou privés.



**Contextualising learning through the participatory construction of an environmental education programme**

Journal:	<i>International Journal of Science Education</i>
Manuscript ID:	TSED-2008-0370.R3
Manuscript Type:	Research Paper
Keywords:	action research, environmental education
Keywords (user):	contextualising as pedagogical technique, Mexico, participatory methods



## CONTEXTUALISING LEARNING THROUGH THE PARTICIPATORY CONSTRUCTION OF AN ENVIRONMENTAL EDUCATION PROGRAMME

### ABSTRACT

Strengthening links between school and community is critical for improving people's participation in environmental issues. However, Mexican education programmes are generally unrelated to rural students' life experience and are planned without considering either teachers' or students' opinions. This paper describes the participatory construction of a preparatory school environmental education programme in Ixtlan de Juarez, a Mexican indigenous community internationally recognized for sustainable forest management. The qualitative research methods used are based on the action research methodology. Results from interviews conducted with the preparatory school's headmaster, the coordinator, and nine teachers provided the needed documentation of the school site for contextualising learning activities. Feedback during focus group with six students, three teachers, five local communal authorities, and two researchers highlighted that all participants perceived the need for creating an educational programme focused on local forest management. The contents and activities of the programme were designed by the focus group's participants. The programme has been continuously taught by teachers and forest workers since 2005 and was officially integrated with the preparatory school science curriculum in 2006. This participative educational experience has thus transformed the mandatory school curriculum in Ixtlan.

**KEYWORDS:** action research, contextualising as pedagogical technique, environmental education, Mexico, participatory methods.

## Introduction

Environmental education researchers consider that environmental education (EE) ideally should be a nodal component of education. EE should not be a fashion, but a fundamental dimension of contemporary education because it has the capacity to provide the basis for the reconstruction of relationships amongst persons, societies, and the environment (Sauvé, 1999). In developing countries many attempts have been made to incorporate EE into school curriculum. These efforts have frequently focused on the concept of contextualisation through active learning, a concept that refers to a strategy for curriculum development based on the school's local context (UNESCO, 1994). Unfortunately, most of those attempts have only resulted in the introduction of some local topics and activities into the school curriculum (Taylor & Mulhall, 2001), mainly as part of the natural sciences' school subject. As a consequence, the incorporation of EE in formal education is a pending matter in developing countries.

The present article describes the construction of a preparatory school EE programme in Ixtlan de Juarez in Oaxaca, a Mexican indigenous community located in the pine forests of Sierra Norte. The EE programme was and continues to be focused on forest management which is particularly relevant for a community economically dependent on forest resources. Ixtlan is representative of other indigenous communities in Mexico, where around 80% of the national forest resources are held by such groups (Snook, 1997), but it is also exceptional because is among the few indigenous communities in Mexico that have successfully managed their forest in both biologically and economically sustainable ways over decades. Ixtlan's experience in forest management shows that community-owned forestry enterprises can have a positive role in conserving biodiversity. However, the permanence and growth of such successful experiences depend on adolescents' professional future interests in their community.

Our research in the area (Ruiz-Mallén, Barraza, Bodenhorn, & Reyes-Garcia, 2009)

1  
2  
3 suggests that preparatory school students have a low knowledge on ecological issues included in  
4 the school curriculum. For instance, results from a questionnaire on ecological concepts taught at  
5 school showed that only 43 of 95 students knew the meaning of the term “silviculture”, which is  
6 centrally related to their local environment because of the forest management activities in Ixtlan.  
7  
8 We have argued that the low knowledge of ecological concepts might be due to the passive  
9 methods used to teach school science concepts, since previous research suggests that passive  
10 methods do not promote students’ enduring interest in school ecological and environmental  
11 learning (Barraza, 2000; Reinfried, 2004). To promote students’ interest in science, participatory  
12 research projects should be actively linked to community concerns. Otherwise, if adolescents do  
13 not develop an interest in environmental issues, it is likely that the successful forestry enterprise  
14 can not survive. In such communities, the school can and should act as a bridge between the final  
15 stage of formal schooling and local natural resource management to enable the continuity and  
16 success of community-owned forestry enterprises (see also Ruiz-Mallén & Barraza, 2006).  
17  
18  
19  
20  
21  
22  
23  
24  
25  
26  
27  
28  
29  
30  
31  
32  
33

34 To address the challenge, we conducted this research with the aim of promoting  
35 relationships between environmental and ecological school contents and local forestry issues in  
36 the Ixtlan preparatory school curriculum. To do so we relied on the EE research model proposed  
37 by Barraza (2000), the fundamental principle of which is that the final education proposal must  
38 be a result of a contextualised and participatory research process. Two information-gathering  
39 steps were considered for constructing a contextualised EE programme. First, semi-structured  
40 interviews were conducted with preparatory school teachers to document the study site for the  
41 contextualisation of the school programme. Second, a focus group with students, teachers, and  
42 local authorities from Ixtlan was conducted to plan an education programme focused on forest  
43 management. Information from semi-structured interviews was useful for directing the discussion  
44 of the focus group and for reaching consensus about the need to create an EE programme focused  
45  
46  
47  
48  
49  
50  
51  
52  
53  
54  
55  
56  
57  
58  
59  
60

1  
2  
3 on forest management. The EE programme has been self-conducted by preparatory school  
4  
5 teachers and community forestry workers since 2005.  
6  
7

8 The description of this case study is important for two reasons. First, it improves our  
9  
10 understanding of key issues on contextualising learning, such as how to design contents and  
11  
12 activities in an EE programme, or how to motivate people to participate in decisions about  
13  
14 programme's contents and activities. The description of this case study is also important to assess  
15  
16 potential implications for planning EE in indigenous communities involved in forestry.  
17  
18 Preparatory schools from other indigenous communities can take advantage of the EE experience  
19  
20 presented here by adapting the Ixtlan programme to address their possibilities, needs, and  
21  
22 interests. Given that the director of the preparatory school system for the State of Oaxaca  
23  
24 incorporated the forestry education programme discussed here as a part of the Ixtlan's  
25  
26 preparatory school curriculum, this article describes an experience that represents an important  
27  
28 step in the official recognition of the need to incorporate more local environmental topics in the  
29  
30 Mexican preparatory school science curriculum.  
31  
32  
33  
34  
35  
36  
37  
38

### 39 Action research for planning participatory EE programmes

40  
41 EE researchers recognise that the positivist/scientific research paradigm, characterised by  
42  
43 the use of quantitative methods for measuring the acquisition of environmental knowledge,  
44  
45 originally dominated the relatively young and evolving field of EE (Palmer, 1998). More  
46  
47 recently, within the rapidly expanding research in EE, two additional paradigms have appeared as  
48  
49 a reaction to the positivist paradigm. The two paradigms [interpretativism/constructivism and  
50  
51 critical theory/action research] have very different underlying assumptions (Hart & Nolan, 1999;  
52  
53 Palmer, 1998). Together, the three main paradigms within EE research are employed to explain  
54  
55 people's behaviour related to their environment and attempt to control this behaviour by  
56  
57  
58  
59  
60

1  
2  
3 promoting attitudinal change. Differences between the theoretical and methodological  
4 foundations of these paradigms can be understood through the questions asked by each of them.  
5  
6  
7  
8 Positivists ask “how many” or “how much” environmental knowledge, perceptions or attitudes do  
9  
10  
11  
12  
13  
14  
15  
16  
17  
18  
19  
20  
21  
22  
23  
24  
25  
26  
27  
28  
29  
30  
31  
32  
33  
34  
35  
36  
37  
38  
39  
40  
41  
42  
43  
44  
45  
46  
47  
48  
49  
50  
51  
52  
53  
54  
55  
56  
57  
58  
59  
60

promoting attitudinal change. Differences between the theoretical and methodological foundations of these paradigms can be understood through the questions asked by each of them. Positivists ask “how many” or “how much” environmental knowledge, perceptions or attitudes do people acquire; interpretativists ask “how” people acquire, assimilate, or transmit environmental knowledge; and critical theorists ask “why” do people acquire environmental knowledge. Critical theorists seek useful participatory processes in the acquisition of environmental knowledge. But what does a participatory process mean in EE?

There is a tendency in the field of EE to confound participation with activism (i.e. waste separation, beaches cleaning or reforestation activities), but some authors have argued that EE cannot be reduced to activism because when the basis for practice is not clear, there is a breakdown between theory and practice (García-Ruiz & Calixto, 2006; Sauv e, 1999). For instance, Hart (1997) argues that many environmental educators assume that EE programmes should promote some kind of direct action on behalf of the environment. Unfortunately, many environmental educators assign children and adults with tasks instead of encouraging them to identify their own problems and propose their own solutions. For EE to be effective, it should focus on the issues and worries that concern people’s daily lives (Sauv e, 1999). Thus, EE should allow people to understand causes and consequences of their own environmental situation for empowering them and promoting their participation in solving local environmental problems. Based on our research in another Mexican indigenous community [San Juan Nuevo Parangaricutiro in Michoacan], elsewhere we argue that, to raise people’s motivation and interest, the design of any educational activity should be based on participants’ opinions (Ruiz-Mall en & Barraza, 2006). Participation can only be achieved by developing learning methods that allow students to establish connections between their learning at school and their local problems (see also Barraza & Ruiz-Mall en, 2007).

1  
2  
3 The critical theory/action research framework for EE research offers a good opportunity  
4  
5 to reduce the gap between theory and practice by involving community members in planning  
6  
7 community-based EE content and activities. The framework uses action research to change  
8  
9 practices by making them more consistent with the pedagogical aims or with the personal  
10  
11 educational ideals that teachers reflexively construct to guide their actions (Elliot, 1994).  
12  
13 According to Palmer (1998) the action research framework clearly challenges traditional  
14  
15 pedagogy and curriculum organization, a challenge that, for a variety of reasons, few may feel  
16  
17 able or willing to take. This framework implies the creation of new roles for and relations among  
18  
19 students, teachers, and curriculum developers. For example, in an action research science project  
20  
21 conducted in seven primary schools in the UK, students were engaged in data collection (i.e.  
22  
23 hardness of kitchen surfaces, heat retention of sleeping bags) and participated in group  
24  
25 discussions of the findings (Warwick & Siraj-Blatchford, 2006). Results from interviews with  
26  
27 students and teachers suggested that children were motivated to raise and address questions  
28  
29 thrown up by the data analysis and seemed able to discuss procedural understanding in science.  
30  
31 In another action research in Canada, Hodson and Bencze (1998) analysed how six science  
32  
33 teachers worked with a change agent to evaluate their current educational practice and improve  
34  
35 science classroom activities. All teachers had to learn, as they were students, how to describe  
36  
37 their practice to the others and give criticism to their actions. Teachers' reflection on current  
38  
39 practice culminated in deciding on, implementing, and evaluating novel science curriculum  
40  
41 activities. In another action research in north-eastern Brazil, Watts and Jofili (1998) engaged  
42  
43 secondary school teachers in a course on critical constructivist education in which they were  
44  
45 required to shape individual action-research projects to be undertaken in their schools. In  
46  
47 interviews conducted 15 months after the program ended, teachers pointed out that their  
48  
49 educational approaches had changed in discussing concepts with students and contextualizing  
50  
51  
52  
53  
54  
55  
56  
57  
58  
59  
60



1  
2  
3 science lessons using school surrounding examples. Teachers also noted that their students  
4  
5 discovered their role in knowledge construction and became aware that learning does not just  
6  
7 depend on the teacher. Then the action research framework seriously challenges the *status quo* in  
8  
9 subject-based curriculum, in initial teacher education and continuing professional development,  
10  
11 and in research itself. In sum, action research integrates the processes of pedagogical  
12  
13 transformation and theory generation (Elliot, 1994). For this reason, understanding the process of  
14  
15 learning and teaching becomes fundamental in action research.  
16  
17  
18

19  
20 In this study, action research theory was put into practice. The methods were used to  
21  
22 promote Ixtlan adults' reflection on the need **to develop** a formal EE programme addressed to  
23  
24 adolescents, as well as their participation in planning its contents and activities.  
25  
26  
27  
28

### 29 **Learning and teaching contextualisation**

30  
31 The action research framework in EE is strongly linked with the assumed value of  
32  
33 contextualising learning and teaching. According to Duit (1991) contextualisation is based on a  
34  
35 constructivist perspective: people learn by constructing their own knowledge as a result of their  
36  
37 experience based on their interaction with the environment where they live. Therefore, a  
38  
39 contextualised curriculum should be constructed by students, teachers, school authorities, and the  
40  
41 community considering relations and interactions between people, their environment, and their  
42  
43 culture. An action research framework in EE promotes a teaching-learning process based on the  
44  
45 direct experience of the learners in their local environment by allowing them to achieve self-  
46  
47 reflection and to create collaborative relations between themselves and the rest of the learning  
48  
49 community (Kemmis & Carr, 1988). So action research gives researchers the participatory  
50  
51 methods for developing contextualised education programmes.  
52  
53  
54  
55  
56

57 Research suggests that participation in curriculum planning results in more challenging,  
58  
59  
60

1  
2  
3 effective, and enjoyable learning (Watts & Jofili, 1998; Ballantyne, Fien & Packer, 2001; Taylor  
4 & Mulhall, 2001). For example, in a comparative research in Tanzania, Sri Lanka, India, and  
5  
6  
7 Ethiopia, Taylor and Mulhall (2001) explored three learning environments for primary school  
8  
9  
10 students: school, home, and community. The research aimed to discover the role of agricultural  
11  
12  
13 experience as a vehicle for contextualising learning in situations where learners' life experience  
14  
15  
16 had been enriched by agriculture. They found that teachers attempted to contextualise learning by  
17  
18  
19 relating the content of the curriculum to the life experience of their students. To contextualise  
20  
21  
22 learning, teachers employed general examples with which students were thought to be familiar.  
23  
24  
25 The authors found that when the curriculum content was contextualised, children understood  
26  
27  
28 better, supposedly because they paid more attention knowing that this learning could be used in  
29  
30  
31 practice. For example, a group of students from Tanzania had difficulty grasping the meaning of  
32  
33  
34 the term "bunch" until they were taken outside and shown a bunch of bananas on a tree.

35  
36  
37 In other research, Ballantyne *et al.* (2001) used a case study approach to explore the  
38  
39  
40 impact of two contextualised school EE programmes in Australia. The researchers helped  
41  
42  
43 contextualise learning by working with three teachers, 62 parents, and 152 students in a variety of  
44  
45  
46 environmental issues. The authors concluded that both programmes were successful in engaging  
47  
48  
49 students in thinking and learning environmental issues and identified two major factors that  
50  
51  
52 contributed to it: 1) connecting topics taught in the programme with the interests of the group and  
53  
54  
55 2) establishing more interactions between programmes' content and activities and the lives of  
56  
57  
58 students' parents.

59  
60  
61 Unfortunately, it is difficult to find such participatory curriculum planning experiences in  
62  
63  
64 Mexico, where the curriculum at primary, secondary, and preparatory school is extremely rigid  
65  
66  
67 (Barraza & Waldrof, 2002). The Federal Education Ministry dictates the basic curriculum for  
68  
69  
70 each education level, which is the same for all the schools in the country. For example, as

1  
2  
3 Aguilera, Rodríguez, and Silva (2006) argue the content of much curriculum design in Mexico is  
4  
5 the same for urban and for rural schools, so curricula are not pertinent to students because they  
6  
7 follow a non-aligned point of view. Curricular homogeneity neglects the basic principle that  
8  
9 curriculum planning should be contextualised so that it is related to students' values, culture, life  
10  
11 conditions, and future expectations, as well as to community economic activities (Peralta, 1996).  
12  
13

14  
15 Despite the lack of institutional flexibility, there are a variety of EE experiences supported  
16  
17 by several State Education Ministries, academic institutions, and non-governmental  
18  
19 organizations. One such initiative is the EE programme called "Science in the family" from  
20  
21 Nuevo Leon, Northern Mexico. In this programme, primary school students, parents, teachers,  
22  
23 and researchers collaborate in raising children's sensibility to local natural resource conservation  
24  
25 (Elizondo, Flores & González, 2007). However, the creation of a formal EE programme in which  
26  
27 Mexican teachers, students, and the community participate in designing content and activities is  
28  
29 far from the Mexican education reality, more so in rural contexts. Each year, teachers are forced  
30  
31 to complete the basic curriculum provided by the Federal Education Ministry. Teachers have  
32  
33 neither the time nor the economic incentives to think about implementing EE programmes related  
34  
35 to local resource management that are not included in the school curriculum. As a result, many  
36  
37 educators just hand down knowledge employing passive teaching methods and students have no  
38  
39 active role in the learning process (Barraza, 2001). The limitation has implications for students'  
40  
41 learning. For instance, Barraza and Cuarón (2004) found that new science words or concepts  
42  
43 taught to Mexican children through the use of textbooks were less likely to be understood than  
44  
45 concepts taught through hand-on activities.  
46  
47  
48  
49  
50  
51

52  
53 In sum, previous research suggests that it is desirable to contextualise school curriculum  
54  
55 in the environmental learning context of the students and to promote the use of practical and  
56  
57 participatory teaching methods. However, research also shows that contextualising learning and  
58  
59  
60

1  
2  
3 including participatory methods in the curriculum are complex issues in Mexico. The present  
4  
5 study contributes to increase the research on contextualising learning by exploring the case of a  
6  
7 preparatory school in a Mexican indigenous community.  
8  
9

### 10 11 12 **A Mexican community successfully involved in forest management**

13  
14  
15 The indigenous community of Ixtlan de Juarez (around 5000 inhabitants) is located in the  
16  
17 state of Oaxaca, in the south-east of Mexico. Since 1986, Ixtlan has adopted a conservation  
18  
19 strategy based on the sustainable management of its forests and is one of the first indigenous  
20  
21 communities to have a communal forestry enterprise in Mexico (Ruiz-Mallén *et al.*, 2009).  
22  
23

24  
25 Ixtlan's internal governance is a mix of pre-colonial traditions (communal authority) and  
26  
27 modern political systems (the municipality). The General Assembly is the supreme communal  
28  
29 governing body that decides on all principal issues within the community as defined by common  
30  
31 ownership of territory (Antironi & Rausser, 2007). As required by law, during the General  
32  
33 Assembly sessions, each registered member of the community, corresponding to *comunero*  
34  
35 families (forestry enterprise owners), has one vote on decisions regarding the management of  
36  
37 natural resources. There are 384 *comunero* families (Comunidad de Ixtlan de Juarez, 1999),  
38  
39 which have preference in gaining jobs in the forestry enterprise. Enterprise workers can work in a  
40  
41 variety of jobs (i.e. forest logger, forest management technician, sawmill or factory worker, and  
42  
43 office administrator) depending on their aptitude, skills, and level of formal education.  
44  
45  
46  
47

48  
49 In Ixtlan there is only one preparatory school where adolescents from 15 to 20 years of  
50  
51 age are prepared for higher education at a university or college. The school belongs to the  
52  
53 CECyTE system [Scientific and Technologic Studies Centre]. The CECyTE curriculum differs  
54  
55 from most Mexican preparatory school curricula in that its content is not totally defined by the  
56  
57 Federal Ministry of Education, but rather each teacher elaborates the programme for the subject  
58  
59  
60

1  
2  
3 that s/he teaches. A preparatory school coordinator and supervisors from the State Education  
4  
5 Ministry review all the programmes before implementation. As a result, the CECyTE curriculum  
6  
7 is more flexible and dynamic than most of the other Mexican preparatory school education  
8  
9 curricula.  
10

## 11 12 13 14 15 **Methods**

16  
17 The present study is based on the EE research model proposed by Barraza (2000), which  
18  
19 main axis is the participatory research understood as a social process of knowledge generation, a  
20  
21 research model that requires interaction among all participants (including researchers) in the  
22  
23 process (Barraza & Ruiz-Mallén, 2007).  
24  
25

26  
27 Data for the study were collected in 2005 and 2006. One of the authors of this article lived  
28  
29 in the community for the entire duration of the research, which resulted in many opportunities of  
30  
31 formal and informal interactions with all the participants of the study. Two research techniques  
32  
33 were used with the ultimate aim of collaboratively developing an EE programme for Ixtlan  
34  
35 preparatory school: semi-structured interviews and focus groups. The research was conducted in  
36  
37 Spanish, which is the first language of the participants as well as of most of the researchers.  
38  
39

40  
41 A total of 11 semi-structured interviews were conducted with the school's headmaster, the  
42  
43 coordinator, and nine teachers randomly selected from the 20 who were working at the CECyTE  
44  
45 at the time of the research. Random selection allowed us to work with a variety of school teachers  
46  
47 in order to explore their perceptions of the educational setting. It also avoided a focus on  
48  
49 predictable components (i.e. teacher's age, gender, school subject). The selected teachers taught  
50  
51 courses in Chemistry, Math, Computer technology, Nursing, History, and Literature.  
52  
53

54  
55 We used semi-structured interviews to explore teachers' perceptions and opinions about:  
56  
57 1) the degree of contextualisation in the preparatory school curriculum, 2) the inclusion of local  
58  
59  
60

1  
2  
3 forest management in the school curriculum, and 3) students' interest in local environmental  
4  
5 **issues**. We structured the interviews around two topics: "Is the curriculum related to the activities  
6  
7 of the community forestry enterprise and how?" and "Is it necessary to reinforce adolescents'  
8  
9 knowledge on local forestry and how?" The interviews were conducted orally and consisted **of 12**  
10  
11 open-ended questions related to the two topics mentioned (Table 1). The interviewers were also  
12  
13 able to ask further questions if they thought they could obtain additional relevant information.  
14  
15 Data were qualitatively analysed using the grounded theory (Strauss, 1987), an inductive theory  
16  
17 that consists in interpreting data by means of the analytical reasoning to make a theory focused  
18  
19 on the study subjects' perception on the social phenomena. Thematic categories related to the  
20  
21 topic aims were constructed from teachers' answers and then categories were interrelated in a  
22  
23 network diagram (Figure 1).  
24  
25  
26  
27  
28

29  
30  
31  
32  
33  
34  
35  
36  
37  
38  
39  
40  
41  
42  
43  
44  
45  
46  
47  
48  
49  
50  
51  
52  
53  
54  
55  
56  
57  
58  
59  
60

INSERT TABLE 1 ABOUT HERE

After analyzing results from semi-structured interviews, we conducted a focus group to  
create a proposal for an EE programme. **Focus groups provide an opportunity for discussing and**  
**planning a programme cooperatively by talking with several people at once.** According to  
Gayford (1993) group discussion-based learning has a motivating effect on students and is an  
effective method of providing students with the opportunity to develop learning skills on EE.

We invited preparatory school teachers to participate in the focus group, as well as school  
and other communal authorities. From the 20 teachers and 11 representatives invited, eight of  
them voluntarily agreed to participate in this research activity. Additionally, we asked teachers to  
indicate the name of the students who **would** be willing to participate. The list consisted of six  
**potential students, all of whom were invited and all of whom** voluntarily agreed to participate.  
Overall, 16 people participated in this research activity. They included: six preparatory school  
students and three teachers with an interest in teaching environmental issues, three

1  
2  
3 representatives from both the municipal and communal authorities as well as two from forestry  
4 and ecotourism enterprises, and two researchers. For two hours participants discussed the need to  
5 contextualise the CECyTE curriculum in relation to community forestry policies and activities.  
6  
7 The focus group started with a group discussion on the following question: How a preparatory  
8 school EE programme should be planned? The researchers used the case of another Mexican  
9 indigenous community involved in forestry [San Juan Nuevo Parangaricutiro], which had just  
10 developed a cooperative EE programme between its preparatory school and its communal  
11 forestry enterprise (Barraza & Ruiz-Mallén, 2007), to provide an example of how an EE  
12 programme could be built.  
13  
14  
15  
16  
17  
18  
19  
20  
21  
22  
23  
24  
25  
26

## 27 **Results**

### 28 *Teachers' semi-structured interviews: Curriculum contextualisation*

29 The results of the analysis of semi-structured interviews are organized in a network  
30 diagram of theme categories (Figure 1). The network diagram describes teachers' opinions on the  
31 current inclusion of local and environmental topics in the preparatory school curriculum and their  
32 proposals for improving the provision of school-based EE in the community.  
33  
34  
35  
36  
37  
38  
39  
40

41 INSERT FIGURE 1 ABOUT HERE

42  
43 Teachers explained that environmental topics were part of the current Ixtlan CECyTE  
44 curriculum in the 1<sup>st</sup> and 2<sup>nd</sup> years. Students in the 3<sup>rd</sup> year had the opportunity to choose between  
45 two areas of expertise: Nursing or Computer technology, but did not have an option related with  
46 environmental issues.  
47  
48  
49  
50  
51

52 The majority of teachers **explained** that they did not **deal with** local and environmental  
53 issues in their classes because these topics were not included in the curriculum:  
54  
55  
56  
57  
58  
59  
60

1  
2  
3 'Preparatory school curriculum is very general. There is not a subject focused  
4 on environmental issues. I think they should be included in the preparatory  
5 school curriculum' [Literature teacher].  
6  
7

8  
9  
10 Faced with this gap in environmental contents, teachers proposed several solutions to  
11 contextualise curriculum in relation to local natural resource management. Six teachers proposed  
12 to develop an area of expertise on forest management for the local CECyTE school curriculum.  
13  
14 Furthermore, all of the teachers mentioned that it was necessary to do more EE activities as a part  
15 of the regular curriculum. They agreed that students should know about the activities of the  
16 communal forestry enterprise and be more aware of the importance of Ixtlan forest management  
17 for environmental conservation:  
18  
19  
20  
21  
22  
23  
24  
25

26  
27 'It is necessary to include subjects on environmental science. For this reason, I  
28 mentioned before an area of expertise in forest management' [Literature  
29 teacher].  
30  
31

32  
33  
34 'We could learn about the enterprise's activities and inform the rest of the  
35 community about it, and motivate their interest in it by creating a link between  
36 the school and the forestry initiatives' [Chemistry teacher].  
37  
38

39  
40  
41 'There could be lectures, guide visits, and films about the destruction of our  
42 environment. We are not so far from the city of Oaxaca where they [Oaxaca's  
43 population] are losing everything [their natural resources]. We still are lucky  
44 because we have forests' [Computer teacher].  
45  
46  
47  
48  
49

50  
51 Teachers felt confident that communal authorities would support school EE activities  
52 because, in general, Ixtlan's population was concerned with environmental conservation and  
53 there was a precedent of institutional cooperation between the school and the community.  
54  
55  
56  
57  
58  
59  
60



1  
2  
3 ***Focus group: Participatory planning of the EE programme***  
4

5  
6 The most important result from teachers' semi-structured interviews related to the need to  
7  
8 promote curriculum contextualisation. Thus the focus group already mentioned was organised to  
9  
10 present to the local authorities these results and to discuss collectively the necessity of creating an  
11  
12 EE programme focused on forest management. Under the suggestion of researchers, the focus  
13  
14 group agreed to develop a participation-action education process based on the participants'  
15  
16 reflection about the need to include more local and environmental topics in the preparatory  
17  
18 school curriculum.  
19

20  
21  
22 During the focus group, researchers noticed that students agreed with their teachers on the  
23  
24 importance of contextualising learning. Students said that they would like to learn more about the  
25  
26 social, political, natural, and economic issues of the community. Students requested field trips to  
27  
28 the forest and to the communal forestry enterprise. Local authorities also agree with students and  
29  
30 teachers and pointed out the need to transmit local environmental knowledge and values to new  
31  
32 generations. They mentioned that the best way to achieve the transmission of local environmental  
33  
34 knowledge was providing students the possibility of observing and experiencing how the  
35  
36 community manages its natural resources. Local authorities offered access to all the communal  
37  
38 facilities for putting teachers' proposals into practice. Thanks to students, teachers, and  
39  
40 authorities, the focus group achieved its aim of collectively planning an EE programme. Teachers  
41  
42 and authorities adapted the content of the EE programme of San Juan Nuevo (Barraza & Ruiz-  
43  
44 Mallén, 2007) to Ixtlan forestry enterprise activities; they decided, for example, to include the  
45  
46 ecotourism enterprise in the EE programme. The EE programme content also reinforced the  
47  
48 ecological concepts included in the preparatory school curriculum, such as ecosystem, biological  
49  
50 conservation, and resource management. The programme consisted in eight sessions to be taught  
51  
52 during a two-month period. Teachers, forest workers, and local authorities coordinated the whole  
53  
54  
55  
56  
57  
58  
59  
60

1  
2  
3 programme. They used a variety of teaching methods such as fieldtrips, lectures, practical field-  
4  
5 based exercises, and group discussion-based workshops (Table 2).  
6  
7

8 INSERT TABLE 2 ABOUT HERE  
9

10 The programme was first taught during April and May 2005. At this time, the programme  
11  
12 was taught in the afternoons or during weekends because it was not yet formally included into the  
13  
14 preparatory school curriculum. A total of 40 people were involved in this first experience: 33  
15  
16 students, two teachers, and five forestry and ecotourism enterprises' workers.  
17  
18

19 As a consequence of the success of the first experience, teachers and local authorities  
20  
21 collaborated in implementing the EE programme again during the next semester [August and  
22  
23 September 2005] with a similar rate of students' and teachers' participation. This second time  
24  
25 around, the programme was modified by teachers and communal authorities to reflect students'  
26  
27 requests for additional sessions on community water availability and waste management and  
28  
29 treatment. Those particular sessions reflected the fact that the Municipality and the communal  
30  
31 authorities have responsibilities for promoting sound environmental policies that affect all  
32  
33 citizens.  
34  
35  
36  
37

38 In 2006, the state-wide Department of Education decided to include the EE programme  
39  
40 into Ixtlan's preparatory science curriculum as a part of the Ecology module which is taught in  
41  
42 the 2<sup>nd</sup> year. More than a hundred of students, three teachers, seven forestry and ecotourism  
43  
44 workers, and two municipal workers participated in the development of this EE programme in  
45  
46  
47  
48 2005 and 2006.  
49  
50

## 51 52 53 Discussion

54  
55 In Mexico, most existing EE experiences have been developed in non-formal educational  
56  
57 contexts. This article documents the participatory process of the creation of a formal EE  
58  
59  
60

1  
2  
3 programme in Ixtlan preparatory school. The **main** merit of the EE programme just presented lies  
4  
5 in that it was completed in the same way it was planned: voluntarily and collectively. The  
6  
7 methodology used, particularly the focus group, was very useful for action research objectives.  
8  
9

10 **The focus group helped to explore preparatory school teachers', students', and authorities'**  
11  
12 **perceptions and opinions about promoting learning contextualisation. It also helped to provide**  
13  
14 **students and teachers to become more invested in developing teaching-learning skills on EE.**  
15  
16

17 Since focus groups are based on group interaction (Kitzinger, 1995), by using this method all  
18  
19 participants were encouraged to talk to one another, exchange opinions, and collectively  
20  
21 construct an EE programme focused on local natural resources management.  
22  
23

24 The process was possible **despite Mexican** educational constraints, as identified in semi-  
25  
26 structured interviews with Ixtlan's preparatory school teachers. The success of the programme in  
27  
28 terms of durability is mostly a consequence of local people empowerment. Since **teachers and**  
29  
30 **students** were able to take decisions about the whole programme (**i.e.**, topics, schedule, **and**  
31  
32 lectures) they could adapt it to their interests, possibilities, and to community and school  
33  
34 resources, so they were both able and motivated to continue with the EE experience. This  
35  
36 programme can be taken as an experience of how active participation helps individuals to identify  
37  
38 and to reflect in their own responsibility for constructing an EE programme collectively.  
39  
40  
41  
42

43 Finally, the role of researchers might have also contributed to the success of the EE  
44  
45 programme planning. Researchers worked as participants rather than as mere observers. The  
46  
47 consensus achieved by students, teachers, and local authorities regarding the creation of the EE  
48  
49 programme was **partially** possible because the researchers promoted the focus group where  
50  
51 participants could discuss it. Since the action research framework promotes participation, EE  
52  
53 researchers should involve themselves in community discussions to support and encourage  
54  
55 people to participate in EE programmes planning.  
56  
57  
58  
59  
60

1  
2  
3 The main limitation that has been identified in this educational research experience relates  
4 to the **inclusiveness of the** focus group. The focus group did not include all the preparatory school  
5 students because the method requires a limited number of participants. Only the most interested  
6 students in environmental issues could participate in designing Ixtlan programme's contents and  
7 activities. Although focus group reduces actors' participation in programme planning, results  
8 shown that it is an effective method to make decisions on programme construction.  
9  
10  
11  
12  
13  
14  
15  
16  
17  
18  
19

## 20 **Conclusions**

21  
22 This case study shows that it is possible to plan a successful formal EE programme with  
23 the participation of students, teachers, **and** school and communal authorities. In addition, this  
24 study also led to the construction of a pertinent higher level curriculum relevant to Ixtlan's  
25 current reality. In this sense, this case study contributes to consolidate the action research  
26 framework in EE research by accomplishing the pedagogical aim to transform, through teacher  
27 reflexivity, the science school curriculum towards participative educational experiences. This, as  
28 Elliot identified as long ago as 1994, meets an identified gap in existing education research – a  
29 gap that we are pleased to help close.  
30  
31  
32  
33  
34  
35  
36  
37  
38  
39

40 Based on the results of this research, we propose five key conditions for planning  
41 contextualised and long-term EE programmes in formal education systems:  
42  
43  
44

- 45 - *Self-empowerment.* **Support** community members **to** coordinate the design and  
46 implementation of the EE programme, and **to** control the entire programme planning  
47 while being free from external institutional **al** interventions.  
48  
49
- 50 - *Stability.* Encourage school teachers and local authorities to establish formal agreements  
51 which assure their future collaboration.  
52  
53  
54  
55  
56  
57  
58  
59  
60

- 1  
2  
3 - *Adaptability*. Guide stakeholders in using novel teaching techniques that allow changing  
4 the content to be appropriate with new local situation while maintaining the intention of  
5 the session (i.e. field trips to teach different forestry problems: fires, diseases,  
6 deforestation).  
7  
8  
9  
10  
11  
12 - *Involvement*. Promote feedback on learning, both to the teacher and to the students  
13 themselves, by encouraging teachers to adopt participatory teaching techniques.  
14  
15  
16  
17 - *Reflection*. Improve environmental knowledge and values acquisition, as well as students'  
18 discussion and reflection on the local environmental situation and solutions for improving  
19 local natural resource management.  
20  
21  
22  
23  
24  
25  
26  
27  
28

## 29 References

- 30  
31 Aguilera, S., Rodríguez, M. A., & Silva, M. (2006). *Plataforma Educativa 2006. Educación*  
32 *Básica*. Mexico, Observatorio Ciudadano de la Educación..  
33  
34  
35  
36 Antiróni, C., & Rausser, G. (2007). Collective choice and community forestry management in  
37 Mexico: an empirical analysis. *Journal of Development Studies*, 43(3), 512-536.  
38  
39  
40  
41 Ballantyne, R., Fien, J., & Packer, J. (2001). School environmental education programme impacts  
42 upon student and family learning: a case study analysis. *Environmental Education*  
43 *Research*, 7, 23-27  
44  
45  
46  
47  
48 Barraza, L. (2000). Educar para el futuro: En busca de un nuevo enfoque de investigación en  
49 educación ambiental. In *Memorias Foro Nacional de Educación Ambiental* (pp. 253-  
50 260). Mexico, Universidad Autónoma de Aguascalientes, Secretaría de Educación Pública  
51 y Secretaría de Medio Ambiente, Recursos Naturales y Pesca.  
52  
53  
54  
55  
56  
57  
58  
59  
60

- 1  
2  
3 Barraza, L. (2001). Environmental education in Mexican schools: A review at primary level. *The*  
4  
5  
6 *Journal of Environmental Education*, 32, 31-36.  
7
- 8 Barraza L., & Waldorf, R. A. (2002). Environmental education: A comparison between English  
9  
10 and Mexican children. *Environmental Education Research*, 8, 171-176.  
11
- 12 Barraza L., & Cuarón, A. (2004). How values in education affect children's environmental  
13  
14 knowledge. *Journal of Biological Education*, 39(1), 18-23.  
15
- 16 Barraza, L., & Ruiz-Mallén, I. (2007) Estrategia participativa de investigación educativa socio  
17  
18 ambiental con jóvenes de una comunidad forestal mexicana (pp. 231-246). In A. Curiel  
19  
20 (Ed.), *Tipos de investigación en y para la salud ambiental y la educación ambiental*.  
21  
22 Mexico, Universidad de Guadalajara y Universidad de Granada.  
23  
24  
25
- 26 Comunidad de Ixtlan de Juarez. (1999). *Communal Statue of Ixtlan de Juarez*. Mexico, Ixtlan de  
27  
28 Juarez.  
29
- 30 Duit, R. (1991). On the role of analogies and metaphors in learning science. *Science Education*,  
31  
32 75, 649-672.  
33  
34  
35
- 36 Elizondo A., Flores, L. A., & González, Y. (2007). Programa Ciencia en Familia: en la  
37  
38 promoción de educación ambiental. Cuba, VI Congreso de Educación Ambiental.  
39
- 40 Elliot, J. (1994). Research on teachers' knowledge and action research. *Educational Action*  
41  
42 *Research*, 2(1), 133-137.  
43  
44
- 45 Hart, R. A. (1997). *Children's Participation: the theory and practice of involving young citizens*  
46  
47 *in community development and environmental care*. London, Earthscan Publication Ltd.  
48  
49
- 50 Hart, P., & Nolan, K. (1999). A critical analysis of research in environmental education. *Studies*  
51  
52 *in Science Education*, 34, 1-69.  
53  
54  
55  
56  
57  
58  
59  
60

- 1  
2  
3 Hodson, D., & Bencze, L. (1998). Becoming critical about practical work: changing views and  
4  
5 changing practice through action research. *International Journal of Science Education*,  
6  
7 20(6), 683-694.  
8  
9
- 10 Gayford, C. (1993) Discussion-based group work related to environmental issues in science  
11  
12 classes with 15-year-old pupils in England. *International Journal of Science Education*,  
13  
14 15(5), 521-529.  
15  
16
- 17 García-Ruiz, M., & Calixto Flores, R. (2006). *Educación ambiental para un futuro sustentable*.  
18  
19 Mexico, Universidad Pedagógica Nacional.  
20  
21
- 22 Kemmis, S., & Carr, W. (1988). *Teoría crítica de la enseñanza. La investigación-acción en la*  
23  
24 *formación del profesorado*. España, Martínez Rica.  
25  
26
- 27 Kitzinger, J. (1995). Introducing focus groups. *British Medical Journal*, 311, 299-302.  
28  
29
- 30 Palmer, J. (1998). *Environmental Education in the 21st. Century*. London, Routledge.  
31  
32
- 33 Peralta, M. V. (1996). *Currículos educacionales en América Latina. Su pertinencia cultural*.  
34  
35 Chile, Editorial Andrés Bello.  
36  
37
- 38 Reinfried, S. (2004). Do curriculum reforms affect classroom teaching in Geography? The case  
39  
40 study of Switzerland. *International Research in Geographical and Environmental*  
41  
42 *Education*, 13(3), 239-250.  
43  
44
- 45 Ruiz-Mallén, I., & Barraza, L. (2006). Environmental learning in adolescents from a Mexican  
46  
47 community involved in forestry. *International Social Science Journal*, 189, 513 -524.  
48  
49
- 50 Ruiz-Mallén, I., Barraza, L., Bodenhorn, B., & Reyes-Garcia, V. (2009). School and local  
51  
52 environmental knowledge, what are the links? A case study among indigenous  
53  
54 adolescents in Oaxaca, Mexico. *International Research in Geographical and*  
55  
56 *Environmental Education*, 18(2), 82-96.  
57  
58  
59  
60

- 1  
2  
3 Sauv , L. (1999). La educaci n ambiental, entre la modernidad y la posmodernidad. *T picos en*  
4  
5 *educaci n ambiental*, 1(2), 7-27.  
6  
7  
8 Snook, L. (1997). Uso, manejo y conservaci n forestal en M xico. In L. Par , D. Bray, J.  
9  
10 Burstein, & S. Mart nez, *Semillas para el cambio en el campo* (pp. 19-36). Mexico,  
11  
12 Instituto de Investigaciones Sociales-Universidad Nacional Aut noma de M xico, Soc. de  
13  
14 Solidaridad "Sansekan Tinemi" y Servicios de Apoyo Local al Desarrollo de Base en  
15  
16 Mexico.  
17  
18  
19  
20 Strauss, A. L. (1987). *Qualitative analysis for social scientists*. Cambridge, Cambridge  
21  
22 University Press.  
23  
24 UNESCO. (1994). *Education for all, summit of nine preparatory population countries. Final*  
25  
26 *report*. Paris, UNESCO.  
27  
28  
29 Taylor, P., & Mulhall, A. (2001). Linking learning environments through agricultural experience  
30  
31 - enhancing the learning process in rural primary schools. *International Journal of*  
32  
33 *Educational Development*, 21, 135-148.  
34  
35  
36 Warwick, P., & Siraj-Blatchford, J. (2006). Using data comparison and interpretation to develop  
37  
38 procedural understandings in the primary classroom: Case study evidence from action  
39  
40 research. *International Journal of Science Education*, 28(5), 443-467.  
41  
42  
43 Watts, M., & Jofili, Z. (1998). Towards critical constructivist teaching. *International Journal of*  
44  
45 *Science Education*, 20(2), 173-185.  
46  
47  
48  
49  
50  
51  
52  
53  
54  
55  
56  
57  
58  
59  
60

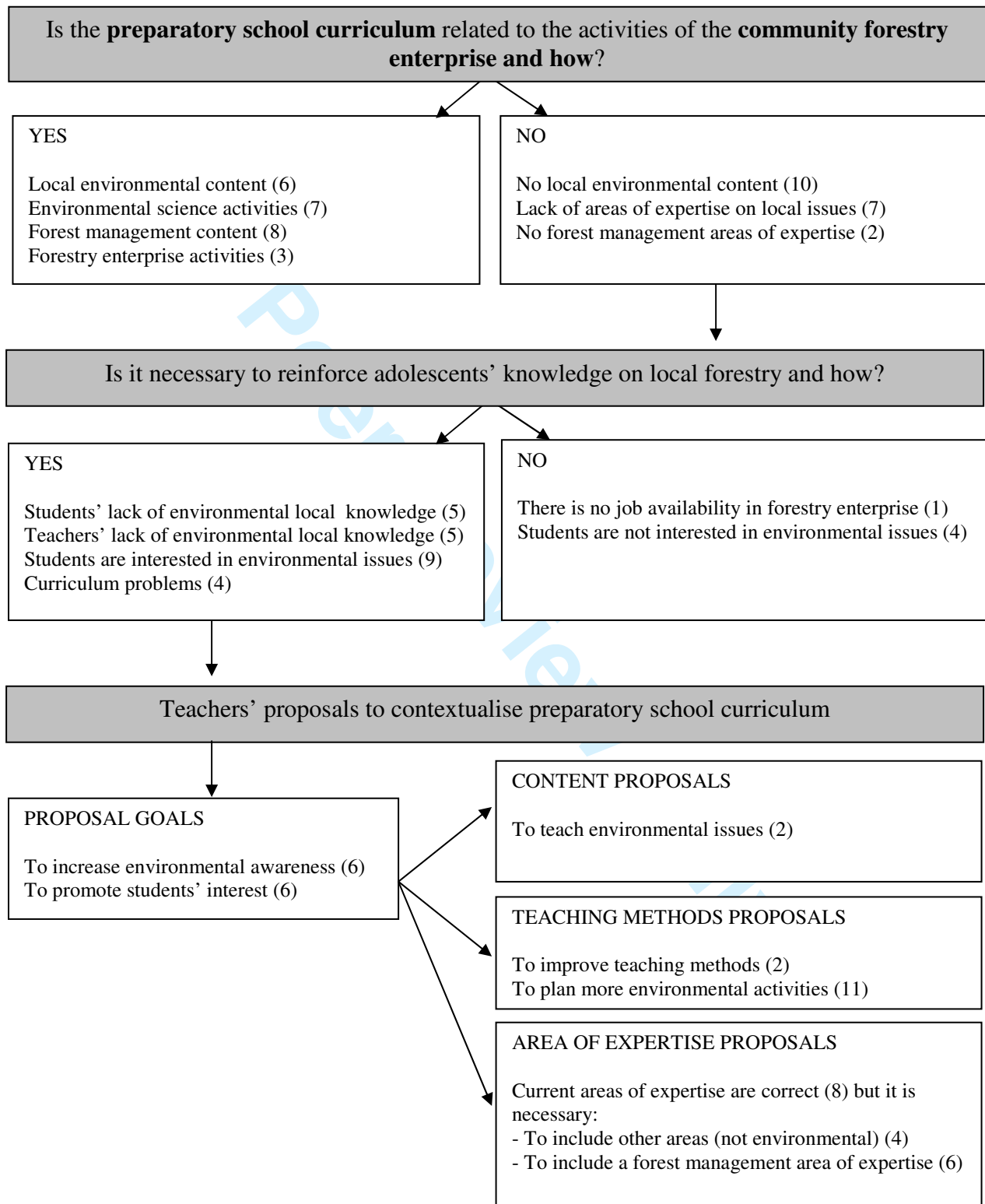


1  
2  
3  
4  
5  
6  
7  
8  
9  
10  
11  
12  
13  
14  
15  
16  
17  
18  
19  
20  
21  
22  
23  
24  
25  
26  
27  
28  
29  
30  
31  
32  
33  
34  
35  
36  
37  
38  
39  
40  
41  
42  
43  
44  
45  
46  
47  
48  
49  
50  
51  
52  
53  
54  
55  
56  
57  
58  
59  
60

**Figure 1.** Network diagram on teachers' opinions about preparatory school curriculum contextualisation.

For Peer Review Only

Note: Number of teachers' opinions in each category in parenthesis



**Table 1.** Preparatory school teachers' semi-structured interview questionnaire.

<b>Name:</b>	<b>Subject:</b>	<b>School year/s taught:</b>
<b><i>A. Is the curriculum related to the activities of the community forestry enterprise and how?</i></b>		
1. What do you think about Ixtlan preparatory school curricula?		
2. Do you think that preparatory school areas of expertise are useful for adolescents in terms of gaining a job in Ixtlan's community and region in the future? Would you eliminate an existing area of expertise? Would you add a new one?		
3. Would you add or eliminate any subject from the preparatory school curriculum? Which one would you add or eliminate? Why?		
4. Do you think that preparatory school subjects include regional and local contents? Which are the subjects that include them? Do you think its enough with these subjects? Why?		
5. Do you think that environmental topics are included in preparatory school curriculum? What are the subjects that include environmental topics?		
6. Do you talk about the communal forestry enterprise in your classes? Do you talk about the community? Do you talk about forest resources? Why do you talk (or not) about them? What do you explain about them? Would you like to include environmental contents in the subject/s you teach?		
<b><i>B. Is it necessary to reinforce adolescents' knowledge on local forestry and why?</i></b>		
7. Do you think that preparatory school students should know more about environmental issues from their community, including the forestry enterprise? Why?		
8. What do you propose for incorporating forestry enterprise activities in preparatory school curriculum?		
9. Does the subject you teach incorporate environmental topics? Which ones?		
10. Do you think students are interested in learning about environmental topics?		
11. Do students ask you about environmental topics? What do they ask?		
12. Do you think students are interested in knowing more about forestry enterprise?		

**Table 2.** Ixtlan preparatory school EE programme.

<i>Session</i>	<i>Topic</i>	<i>Lecturer</i>	<i>Method</i>
1	Ixtlan's history and Ixtlan forestry enterprise' foundation and evolution	Forest enterprise Manager	Lecture
1	San Juan Nuevo forestry enterprise and the cooperation between Ixtlan and San Juan	Sociologist	Lecture
2	Forestry enterprise departments' functions and forest management plans	Forest engineer	Visit to Forest Enterprise Administration
3	The forest ecosystem, and forest fires and diseases control methods	Forest engineer	Lecture
4	Tree nurseries and plantations as strategies for environmental conservation and development.	Forest enterprise worker	Visit to tree nurseries and plantations
5	The sawmill production areas	Forest engineer	Visit to sawmill
6	The role of ecotourism in Ixtlan environmental conservation and economy	Ecotourism enterprise Manager	Visit to ecotourism enterprise
7	Students' proposal of planning a school garden for their preparatory school	Teachers	Group discussion-based
8	Future collaboration activities planning between preparatory school and community	Preparatory school and local authorities	Collective dynamic