



**HAL**  
open science

# An analysis of the CoRoT-2 system: A young spotted star and its inflated giant planet

Tristan Guillot, Mathieu Havel

► **To cite this version:**

Tristan Guillot, Mathieu Havel. An analysis of the CoRoT-2 system: A young spotted star and its inflated giant planet. *Astronomy and Astrophysics - A&A*, 2011, pp. Volume 527, id.A20. 10.1051/0004-6361/201015051 . hal-00517196

**HAL Id: hal-00517196**

**<https://hal.science/hal-00517196>**

Submitted on 13 Sep 2010

**HAL** is a multi-disciplinary open access archive for the deposit and dissemination of scientific research documents, whether they are published or not. The documents may come from teaching and research institutions in France or abroad, or from public or private research centers.

L'archive ouverte pluridisciplinaire **HAL**, est destinée au dépôt et à la diffusion de documents scientifiques de niveau recherche, publiés ou non, émanant des établissements d'enseignement et de recherche français ou étrangers, des laboratoires publics ou privés.

# An analysis of the CoRoT-2 system: A young spotted star and its inflated giant planet

Tristan Guillot and Mathieu Havel

Université de Nice-Sophia Antipolis, CNRS UMR 6202, Observatoire de la Côte d'Azur, B.P. 4229, 06304 Nice Cedex 4, France  
e-mail: tristan.guillot, mathieu.havel@oca.eu

Submitted to A&A: 26 May 2010; Revised: 4 Sept. 2010; Accepted: 13 Sept. 2010

## ABSTRACT

**Context.** CoRoT-2b is one of the most anomalously large exoplanet known. Given its high mass, its large radius cannot be explained by standard evolution models. Interestingly, the planet's parent star is an active, rapidly rotating solar-like star with spots covering a large fraction (7-20%) of its visible surface.

**Aims.** We attempt to constrain the properties of the star-planet system and understand whether the planet's inferred large size may be caused a systematic error in the inferred parameters, and if not, how it can be explained.

**Methods.** We combine stellar and planetary evolution codes based on all available spectroscopic and photometric data to obtain self-consistent constraints on the system parameters.

**Results.** We find no systematic error in the stellar modeling (including spots and stellar activity) that would cause a  $\sim 10\%$  reduction in size of the star and thus the planet. Two classes of solutions are found: the usual main-sequence solution for the star yields for the planet a mass of  $3.67 \pm 0.13 M_J$ , a radius of  $1.55 \pm 0.03 R_J$  for an age that is at least 130 Ma and should be younger than 500 Ma given the star's rapid rotation and significant activity. We identify another class of solutions on the pre-main sequence, for which the planet's mass is  $3.45 \pm 0.27 M_J$  and its radius is  $1.50 \pm 0.06 R_J$  for an age of 30 to 40 Ma. These extremely young solutions provide the simplest explanation of the planet's size that can then be matched by a simple contraction from an initially hot, expanded state, if the atmospheric opacities are larger by a factor of  $\sim 3$  than usually assumed for solar composition atmospheres. Other solutions imply that the present inflated radius of CoRoT-2b is transient and the result of an event that occurred less than 20 Ma ago, i.e., a giant impact with another Jupiter-mass planet, or interactions with another object in the system that caused a significant rise in the eccentricity followed by the rapid circularization of its orbit.

**Conclusions.** Additional observations of CoRoT-2 that could help us to understand this system include searches for an infrared excess, a debris disk, and additional companions. The determination of a complete infrared lightcurve including both the primary and secondary transits would also be extremely valuable to constrain the planet's atmospheric properties and determine the planet-to-star radius ratio in a manner less vulnerable to systematic errors caused by stellar activity.

**Key words.** Star: individual: CoRoT-2; (Stars:) planetary systems; Stars: pre-main sequence; Planets and satellites: physical evolution

## 1. Introduction

CoRoT-2b is the second transiting planet discovered by the space mission CoRoT (Alonso et al. 2008; Bouchy et al. 2008). It is noteworthy because of its relatively large mass and large size. As such, it belongs to the class of anomalously large extrasolar giant planets, i.e. planets that are larger than predicted by standard theoretical models for the evolution of an irradiated, solar-composition gas giant (Guillot et al. 2006).

Anomalously large planets require additional heat sources (e.g. Bodenheimer et al. 2001; Guillot & Showman 2002; Baraffe et al. 2003; Guillot et al. 2006; Burrows et al. 2007) to explain their radii. It is now clear that these objects are common, representing about half of the presently known transiting planets (Guillot 2008; Miller et al. 2009). However the properties of CoRoT-2b are probably the most difficult to explain: it has one of the largest radius anomalies (defined as the difference between observed and modeled for a solar-composition irradiated planet), and yet is massive, meaning that modifying its evolution to slow its contraction is difficult and requires significant deviations from the standard models.

Secondary transits of CoRoT-2b have been detected by several instruments providing puzzling results: Measured brightness temperatures have been found to vary from  $1325 \pm 180$  K at  $8 \mu\text{m}$  to  $1805 \pm 70$  K at  $4.5 \mu\text{m}$  (Gillon et al. 2010; Snellen et al. 2010), and up to  $2170 \pm 50$  K in the visible (Snellen et al. 2010; Alonso et al. 2010b), significantly higher than the zero-albedo equilibrium temperature of the planet  $1530 \pm 140$  K.

The star CoRoT-2 is also remarkable because of its unusual variability and spot coverage: analyses of the CoRoT lightcurve for this system –spanning 152 days of nearly-continuous observations– led to a precise determination of the star's rotation period,  $4.52 \pm 0.14$  days (Lanza et al. 2009), and estimates of the spot coverage that range between 7% and 20%, for a spot contrast of between  $\sim 0.3$  and 0.7 (Lanza et al. 2009; Huber et al. 2010; Silva-Valio et al. 2010). The spot coverage (i.e. the fraction of the stellar surface that is occupied by starspots) may even locally reach 37% for a contrast of 0.7 (similar to the average value for sunspots) at the latitudes where the planetary eclipses occur (Huber et al. 2010).

Could the peculiarities of the star account for the unusually large inferred size of the planet or do we require additional heat sources in the planet? We address this question by first revisiting the star's evolution by accounting for the presence of spots

Send offprint requests to: T. Guillot

**Table 1.** Observational constraints on the stellar parameters

<i>Spectroscopy</i>		
$T_{\text{eff,H}\alpha}$	$5450 \pm 120$ K	Bouchy et al. (2008)
$T_{\text{eff,[Fe]}}$	$5625 \pm 120$ K	Alonso et al. (2008)
$T_{\text{eff}}$	$5608 \pm 37$ K	Ammler-von Eiff et al. (2009)
$\log g$	$4.3 \pm 0.2$ cm s <sup>-2</sup>	Alonso et al. (2008)
$\log g$	$4.71 \pm 0.2$ cm s <sup>-2</sup>	Ammler-von Eiff et al. (2009)
[M/H]	$0.0 \pm 0.1$	Alonso et al. (2008)
<i>Photometry and RV</i>		
$m_V$	12.57	Alonso et al. (2008)
$P_{\star}$	$4.522 \pm 0.024$ days	Lanza et al. (2009)
$P_{\text{orb}}$	$1.7429935 \pm 10^{-6}$ days	Gillon et al. (2010)
$k$	$0.1711 \pm 0.0011$	This work
$k$	$0.1658 \pm 0.0004$	Gillon et al. (2010)
$k$	$0.1720 \pm 0.0010$	Czesla et al. (2009)
$k$	$0.1667 \pm 0.0006$	Alonso et al. (2008)
$i$	$88.08^{+0.18}_{-0.16}$ deg	Gillon et al. (2010)
$\rho_{\star}$	$1.870 \pm 0.026$ g cm <sup>-3</sup>	Alonso et al. (2008)
$\rho_{\star}$	$1.814^{+0.050}_{-0.045}$ g cm <sup>-3</sup>	Gillon et al. (2010)
$K$	$603 \pm 18$ m s <sup>-1</sup>	Gillon et al. (2010)
$a/R_{\star}$	$6.64 \pm 0.03$	Gillon et al. (2010)

(Sect. 2), then applying these results to planetary evolution models (Sect. 3).

## 2. The evolution of a spotted star: Constraints on CoRoT-2

### 2.1. Constraints derived from spectroscopic and transit photometry analyses

The star CoRoT-2 has been identified as a G7 dwarf of solar composition by spectroscopic analyses. Table 1 lists its known physical properties inferred from spectroscopy, radial velocimetry, and the analysis of its transit lightcurve.

The effective temperature of CoRoT-2 differs slightly between measurements: Bouchy et al. (2008) report a low value from H $\alpha$  bands and relatively low signal-to-noise HARPS spectra, and a high value, also from HARPS but using Fe spectral lines. Ammler-von Eiff et al. (2009) essentially confirm this last value with Fe lines and UVES, but with a smaller error bar (which does not however include systematic effects).

The spectral determination of the star's gravity is, as commonly found for stars, quite uncertain. Measurements inferred from HARPS and UVES data differ slightly, there being one  $\sigma$  error bars that barely overlap.

As is typical of a star with a transiting planet, the most stringent constraint is that on the stellar density. For CoRoT-2, Alonso et al. (2008) are able to determine the duration of the transit so precisely that the stellar density is constrained to within only 1.4%.

Given these measurements, Alonso et al. (2008) infer planetary parameters,  $M_p = 3.31 \pm 0.16 M_J$  and  $R_p = 1.465 \pm 0.029 R_J$ . This implies that CoRoT-2b is extremely inflated even relative to other large transiting planets. Before we attempt to model it, we estimate the accuracy to which the stellar parameters can really be derived. For example, this initial estimate by Alonso et al. assumes a circular orbit and no influence by spots on the photometric determination.

A subsequent analysis of the CoRoT-2 lightcurves (Czesla et al. 2009) shows that the presence of spots during the transits affects the photometry and in particular the depth  $k^2$  of the transits: when the planet transits, it occasionally occults star spots,

thereby blocking a smaller fraction of the stellar light. On average, the transits appear less deep than for a star without spots, implying that the planetary radius is underestimated when neglecting the effect of spots.

The effect of a non-zero eccentricity is to modify the relation between transit duration and stellar density in a non-trivial way relative to a circular orbit (e.g. Tingley & Sackett 2005). Gillon et al. (2010) refined the analysis of Alonso et al. using constraints on the eccentricity and argument of the periastron from the radial velocity data within a Markov Chain Monte Carlo approach. They found that solutions with a slight eccentricity ( $e \sim 0.015$ ) are more likely and thus inferred a lower stellar density  $\rho_{\star}$  and a slightly smaller value of  $k$ .

Most of the parameters used for this work are based on the analysis of Gillon et al. (2010) (see Table 1). However, to account for the effect of spots on the transit depths, and because the Czesla et al. (2009) study did not allow for the possibility of an eccentric planet, we choose to derive a probable value of  $k$  that accounts for both spots and a non-circular orbit by a simple proportionality relation between the different studies:  $k = k_{\text{Czesla}}/k_{\text{Alonso}} \times k_{\text{Gillon}}$ . The error bar in  $k$  is calculated to be the quadratic mean between the values of  $k$  found by the Czesla et al. and Gillon et al. studies.

### 2.2. Evolution models

Stellar evolution models are needed to derive the star's and planet's masses and radii. In most of this work, we use a grid of quasi-static evolutions for stars with masses between 0.6 and 1.3  $M_{\odot}$  ( $\Delta M_{\star} = 0.005 M_{\odot}$ ) calculated with the CESAM evolution code (Morel & Lebreton 2008). The grid has been calibrated with respect to the Sun, which is most accurately described ( $< 10^{-4}$  relative precision) by mass fractions of hydrogen  $X_{\odot} = 0.7065$ , helium  $Y_{\odot} = 0.2740$ , and heavy elements  $Z_{\odot} = 0.0195$ , based on the actual  $Z/X = 0.0245$  ratio of Grevesse & Noels (1993), and spectroscopic parameters  $T_{\text{eff},\odot} = 5778$  K, and  $L_{\odot} = 3.846 \times 10^{26}$  W for an age of 4.57 Ga. A standard mixing-length approach without overshooting is used in the energy transport equation. Our calibrated Sun has a mixing length parameter  $\alpha_{\odot} = 2.052$ . The atmospheric boundary is calculated using a  $T(\tau)$  relation derived from MARCS models (Gustafsson et al. 2008), and we consider the microscopic diffusion of chemical elements in the radiative zone (therefore the atmospheric metallicity varies as a function of time). We chose the abundances of Grevesse & Noels (1993) because the seismological constraints are not met when using other, more recent abundances.

For comparison, we also use the grid of models calculated by Baraffe et al. (1998) (hereafter BCAH98) for solar-composition stars. Those models assume a non-grey atmosphere, and the convection is treated in the context of the mixing-length theory with no core-overshooting and no diffusion. The tables assume that  $X = 0.716$ ,  $Y = 0.282$ ,  $Z = 0.020$ , and  $\alpha = 1.9$ . For a solar model (1  $M_{\odot}$ , 1  $R_{\odot}$ ), the tables yield an effective temperature  $T_{\text{eff},\odot} = 5797$  K and luminosity  $L_{\odot} = 3.801 \times 10^{26}$  W for an assumed age of 4.61 Ga.

Finally, results are also compared to the so-called  $Y^2$  stellar evolution tracks (hereafter YY) for solar composition stars (Demarque et al. 2004). These models include convection-overshoot and diffusion.

### 2.3. The effect of spots and activity

By definition, the effective temperature of a star  $T_{\text{eff}}$  is linked to its total luminosity  $L$  and radius  $R$  by the well-known relation

$$L = 4\pi R^2 \sigma T_{\text{eff}}^4 \quad (1)$$

However, in the presence of spots and activity, this relation has to be revised, because the correspondence between the effective temperature derived from a spectroscopic analysis (which we refer to as  $T_{\text{eff, spectro}}$ ) and that obtained from Eq. 1 no longer holds.

Across the face of the Sun, spots are indicative of high magnetic activity: although the spots block a fraction ( $\sim 0.1\%$ ) of the starlight, their appearance is connected to a global increase in the total solar irradiance by about  $0.1\%$ , from  $\sim 1365.5$  to  $1366.5 \text{ W m}^{-2}$  due to the presence of bright faculae (e.g. Fröhlich & Lean 2004; Krivova & Solanki 2008). This implies that the flux emitted in the visible and most importantly in the UV increases. Secular variations in the total solar irradiance based on models and a  $\sim 300$  year record of the solar activity also amount to about  $0.1\%$  (Solanki & Fligge 2000).

For stars with activity levels comparable to that of the Sun or lower, this level of uncertainty is much smaller than that attainable from spectroscopic measurements. In the case of CoRoT-2, the area covered by starspots is 70 to 200 times larger than for the active Sun and thus can potentially affect what may be inferred about the star properties, i.e. its luminosity, radius and mass.

In Table 1, the effective temperature of CoRoT-2 was determined from either the H- $\alpha$  line at 656.3 nm or fits in the visible (450 to 740 nm). For comparison, between minimum and maximum of activity, the Sun increases its relative flux  $\Delta F_\lambda / F_\lambda$  by about  $0.1\%$ ,  $0.05\%$ , and  $0.07\%$  at wavelengths in the range of 400-500 nm, 500-700 nm, and 700-800 nm, respectively (Krivova et al. 2006). Variations in the brightness temperatures at these wavelengths (proportional to  $\sigma T^4$ ) are 4 times smaller. If we assume that these numbers indeed scale with the surface area covered by spots (a big *if*, arguably), the potential mismatch between the spectroscopically inferred  $T_{\text{eff, spectro}}$  and the true  $T_{\text{eff}}$  amounts to up to  $5\%$ .

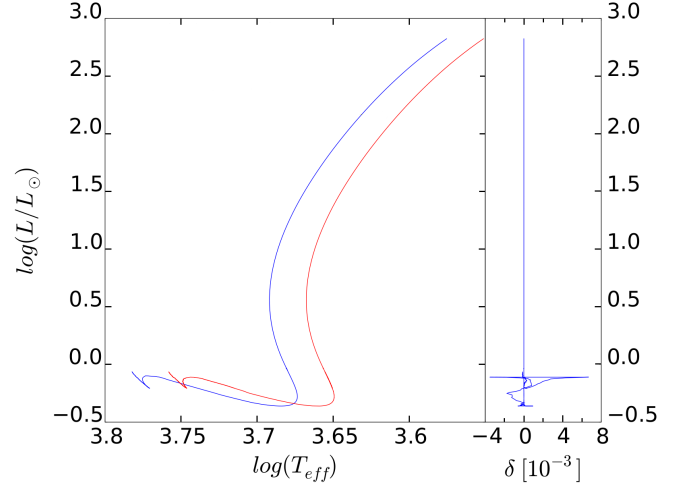
To see how the results may be affected by stellar activity, we first compare standard evolution models to evolution models calculated with CESAM and a modified atmospheric boundary condition

$$L = (1 - \chi_s) 4\pi R^2 \sigma T_{\text{eff, spectro}}^4, \quad (2)$$

where  $\chi_s$  is a factor that accounts for emission from only part of the surface of the star. For purely black spots with no faculae it corresponds to the surface fraction of spots.

Figure 1 shows the result for a given luminosity and age, a star with spots simply has a higher “spectroscopic” effective temperature  $T_{\text{eff, spectro}}$  as inferred from spectroscopic measurements than a star without spots. The evolution is simply displaced to the left of the HR diagram by an almost constant ratio  $(1 - \chi_s)^{1/4}$  in  $T_{\text{eff}}$ . Quantitatively, the mean deviation amounts to  $5 \times 10^{-5}$  on  $T_{\text{eff}}$ , with a standard deviation  $\sigma = 4.6 \times 10^{-4} T_{\text{eff}}$  and a maximum deviation  $6.7 \times 10^{-3} T_{\text{eff}}$ . The small departures from this constant displacement are due to slight modifications of the atmospheric properties (opacities) with temperature, but they can safely be neglected in this study.

When considering a star’s evolution, that a star has spots is therefore equivalent to an added uncertainty in the measurement of its effective temperature. Activity also has the same consequence because it implies that both the present spectroscopically-determined effective temperature and the present luminosity may differ from their value averaged over one



**Fig. 1.** *Left panel:* Hertzprung-Russell evolution tracks for  $0.97 M_\odot$ ,  $Z = 0.02$ ,  $\alpha = 1.9$  for a standard evolution model (red line), and when modifying the atmospheric boundary condition to account for the presence of  $\chi_s = 20\%$  of dark spots on the stellar surface (blue line). *Right panel:* differences in effective temperature for a given luminosity between the model with no spot, and the model with spots after the effective temperature has been shifted by a constant factor  $(1 - \chi_s)^{1/4}$ .

stellar magnetic cycle. A larger error bar in  $T_{\text{eff}}$  may be used as a proxy for the added uncertainty due to activity and starspots. Although this uncertainty may be either positive (if the luminosity of CoRoT-2 is lower than its mean value and/or the contribution of faculae is larger than that of spots) or negative (if CoRoT-2 is more luminous than average and/or the spots are dark) we choose to only study the latter possibility. As shown in the following section, only lower  $T_{\text{eff}}$  values can yield smaller radii for the star and the planet and hence help to solve the inflation puzzle.

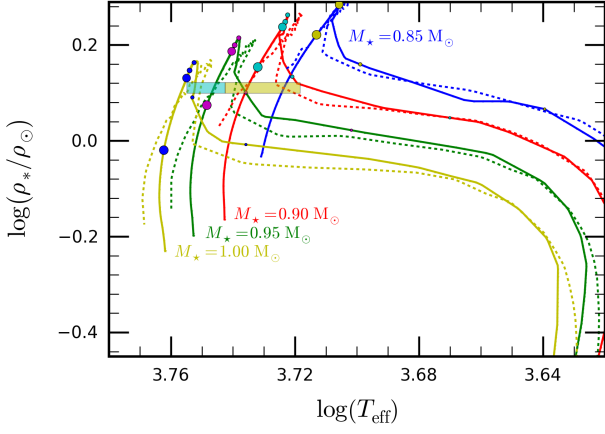
### 2.4. Constraints on the star’s physical parameters

The star’s physical parameters ( $M_\star$ ,  $R_\star$ , age) are obtained by matching the constraints from Table 1 to a grid of evolution models, as depicted in Fig. 2. The two most important constraints of the problem are the star’s effective temperature and density. A third constraint (not shown on the plot) is the star’s *present* metallicity, which should be compared to the one obtained from the evolution models that include diffusion. One could include other constraints (such as that on  $\log g$ ), but in the present case, they are too weak to be useful.

The quality of the fit of any given model is given by its distance  $n_{\sigma_\star}$  to the ellipsoid of constraints, measured in units of the standard error in the constraints given by

$$n_{\sigma} = \left[ \sum_i \left( \frac{X_i}{\sigma_i} \right)^2 \right]^{1/2}, \quad (3)$$

where  $X_i$  are the constraints and  $\sigma_i$  their standard deviation (assumed Gaussian). The ellipsoid of constraints (of dimension 2) is centered on  $(T_{\text{eff}}, \rho_\star)$  and has semi-minor and semi-major axes  $k_{2D, n_\sigma} n_\sigma (\sigma_{T_{\text{eff}}}, \sigma_{\rho_\star})$ , respectively, where  $k_{2D, n_\sigma}$  is the quantile of a 2D gaussian law at the equivalent level of confidence  $n_\sigma$ . In addition,  $k_{2D, n_\sigma} \sim 1.52, 2.49, 3.44$  for  $n_\sigma = 1, 2, 3$  respectively. This normalization ensures that our solutions at  $1, 2, 3 \sigma$  have



**Fig. 2.** Evolution tracks for stars of masses between 0.85 and  $1.0M_{\odot}$  in the effective temperature vs. stellar density space. The  $1\sigma$  observational constraints are shown as boxes: the box to the left (blue) corresponds to solutions that neglect the effect of spots. The two boxes (blue and yellow) correspond to the added uncertainty obtained when assuming that from 0 to 20% of the stellar surface is covered by spots. CESAM tracks (plain) are compared to BCAH98 tracks (dashed). The models assume solar composition. Dots on the CEPAM tracks correspond to the following ages (small to large circles): 20, 32, 100, 500, 1000, 5000 Ma, respectively.

the correct probability of occurrence. However, for the metallicity we adopt a relatively crude simplification: we consider as valid only solutions for which the  $[\text{Fe}/\text{H}]$  value is within  $1\sigma_{[\text{Fe}/\text{H}]}$  of the measured one. We tested that in the particular case of CoRoT-2, considering yet larger errors in  $[\text{Fe}/\text{H}]$  has a negligible effect. In the remainder of the paper, we present models for which  $n_{\sigma_*} \leq 1, 2, 3$ , corresponding to confidence levels of 68.3%, 95.4%, and 99.7%, respectively.

Two possible values of the effective temperature are used: (i) in the no-spot case, we assume that obtained by Ammler-von Eiff et al. (2009) but with a slightly larger error to account for possible systematic errors ( $T_{\text{eff, spectro}} = 5608 \pm 80$  K); (ii) when including the effect of spots, we define a new temperature and its associated error  $\Delta T_{\text{eff}}$  to take into account the presence of spots (from 0% to 20% of the area of the star)

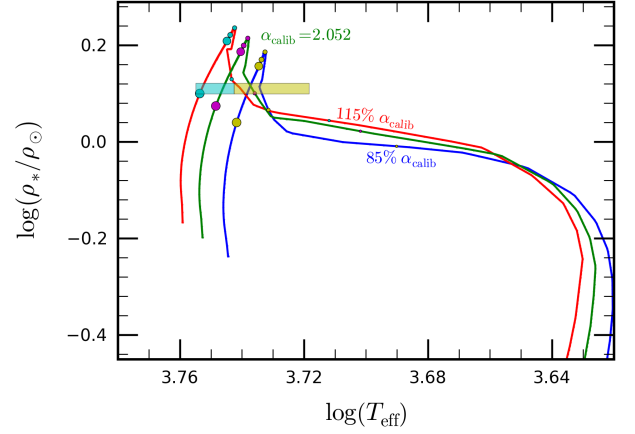
$$\bar{T}_{\text{eff}} = \bar{T}_{\text{eff, spectro}} \frac{1 + (1 - \chi_s)^{1/4}}{2},$$

$$\Delta T_{\text{eff}}(n_{\sigma}) = \bar{T}_{\text{eff, spectro}} - \bar{T}_{\text{eff}} + n_{\sigma} \sigma_{T_{\text{eff, spectro}}}.$$

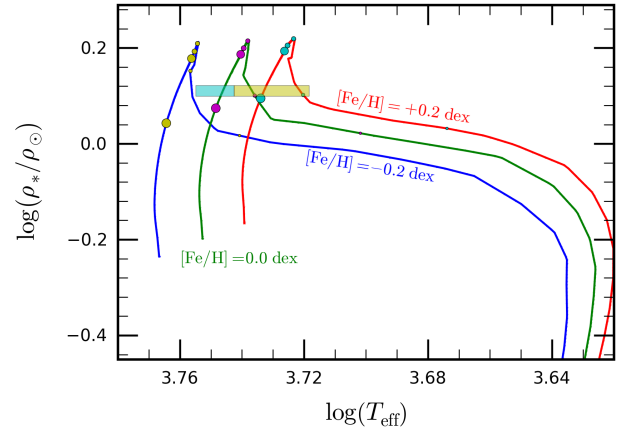
We thus derive  $T_{\text{eff}} = 5224 - 5688$  K at  $1\sigma$ ,  $T_{\text{eff}} = 5144 - 5768$  K at  $2\sigma$ , and  $T_{\text{eff}} = 5064 - 5848$  K at  $3\sigma$ . The errors are thus intrinsically non-Gaussian.

The constraints used for the stellar density and metallicity are those derived by Gillon et al. (2010) and Alonso et al. (2008), respectively (see Table 1).

Figure 2 shows evolution tracks in the  $(\log T_{\text{eff}}, \log \rho_*)$  plane for solar-composition stars of between  $0.85$  and  $1.0M_{\odot}$ . For about 100 Ma, the stars contract and heat up from a low-temperature, low-density initial state, the so-called pre-main-sequence phase (PMS). They then reach a maximum in their density and very gradually expand while on the main-sequence (MS). In the case of CoRoT-2, the observational constraints on  $T_{\text{eff}}$  and  $\rho_*$  are met either on the PMS, for ages  $\sim 30$  Ma, or at much older ages in the MS phase. Only stars with masses



**Fig. 3.** CEPAM evolution tracks for a  $0.95M_{\odot}$  star for three values of the mixing length parameter around the Sun calibrated value ( $0.85\alpha_{\odot}$ ,  $\alpha_{\odot}$ ,  $1.15\alpha_{\odot}$ ) in the effective temperature vs. stellar density space. The symbols are as in Fig. 2.



**Fig. 4.** CEPAM evolution tracks for a  $0.95M_{\odot}$  star for three values of the metallicity ( $[\text{Fe}/\text{H}] = -0.2, 0, \text{ and } 0.2$ , respectively) in the effective temperature vs. stellar density space. The mixing length parameter has been calibrated to the solar model. The symbols are as in Fig. 2.)

between roughly  $0.84$  and  $1.04M_{\odot}$  intercept the box of constraints at some point in their evolution. Figure 2 also shows that the presence of spots yields solutions at smaller masses than when spots are not taken into account. The agreement between CESAM and BCAH98 models is generally very good, with differences in  $T_{\text{eff}}$  of generally  $\sim 1\%$  or less, and differences in  $\rho_*$  that can reach  $\sim 10\%$  but in only a limited region of the PMS evolution phase.

In Fig. 3, we explore the effect of a “reasonable” ( $\pm 15\%$ ) modification of the mixing length parameter  $\alpha$  on the evolution tracks. The effect is not negligible in terms of its impact on both the effective temperature and the stellar density. A higher value of  $\alpha$  implies a more efficient energy transport and therefore higher effective temperatures and generally a faster evolution. Less intuitively perhaps, it leads to a higher maximal stellar density at the early stages of the MS phase. However, we emphasize that these models with modified mixing lengths have not been calibrated and do not properly reproduce the present Sun.

The consequences of metallicity variations are shown in Fig. 4. An increase in the  $[\text{Fe}/\text{H}]$  value by a factor  $1/3$  leads to a

global decrease in the effective temperature by about 2%, larger than the  $1\sigma$  error in the measurements, but slightly smaller than the uncertainty in  $T_{\text{eff}}$  obtained when including spots. This effect is thus significant and should be included in the search for solutions matching the observational constraints.

We present in Fig. 5 the ensemble of solutions in the  $(R_*, \text{age})$  space obtained with various assumptions. The top panels correspond to our preferred solutions using our calibrated CESAM evolution model and including all metallicities. At  $3\sigma$ , a wide range of solutions is found that extends from ages between 30 Ma and more than 10 Ga. Within  $1\sigma$ , two classes of solutions are found, either on the PMS (30 – 40 Ma) or on the MS (for ages > 800 Ma with no spots, or > 100 Ma when including spots). The range of stellar radii (which are directly proportional to the planetary radii that are inferred) extend from 0.88 to  $0.93 R_\odot$  at  $1\sigma$ , but the smallest values are obtained for either the youngest or oldest solutions.

The other panels in Fig. 5 highlight the consequences of the different hypotheses on the solutions, when considering only solar composition models. Varying the mixing length parameter has consequences for the  $1\sigma$  solutions: a lower  $\alpha$  value leads to a wider range of solutions at intermediate ages, while a higher  $\alpha$  increases the separation between the very young and the very old solutions. However, when considering the global  $3\sigma$  envelope and accounting for spots, the solutions are very similar.

The solutions obtained by using the  $\rho_*$  value of Alonso et al. (2008) are quite similar to the nominal ones, but are regarded as slightly over-constrained due to the assumption of a circular orbit.

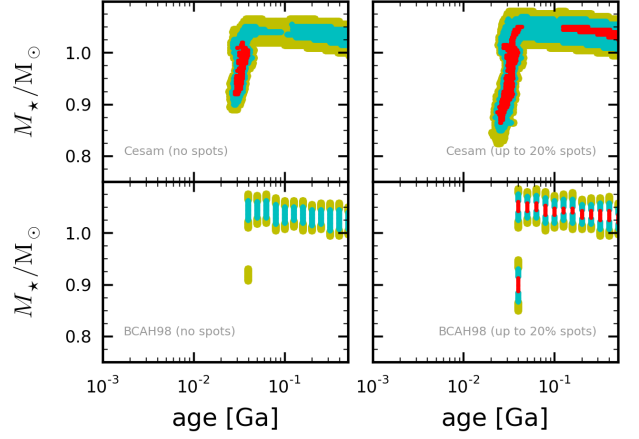
The last four panels in Fig. 5 provide another test of the robustness of the solutions by a comparison with YY and BCAH98 evolution models. All models appear to be in excellent agreement at least to the  $2\sigma$  level. A minor difference is the absence of  $1\sigma$  PMS solutions in the no-spot case for BCAH98, contrary to the CESAM and YY results.

Additional constraints on the stellar age may be derived from CoRoT-2 being a rapid rotator. According to Mamajek & Hillenbrand (2008), the 4.5 day rotation period with  $B - V = 0.854$  (Lanza et al. 2009) implies an age typical of that of the Pleiades, i.e.,  $\sim 130$  Ma. Given the absence of stars with similar  $B - V$  and periods shorter than 8 days in the Hyades ( $\sim 625$  Ma), we estimate that CoRoT-2 is less than 500 Ma old, which thus restricts the ensemble of solutions from Fig. 5 quite significantly.

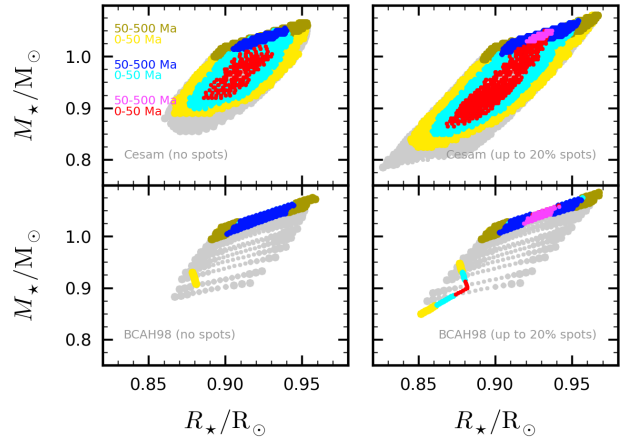
We now focus on the young ( $< 500$  Ma) solutions and compare CESAM with BCAH98 in the  $(R_*, M_*, \text{age})$  parameter space. (We do not show the comparisons with YY, since it closely resembles CESAM). Figure 6 shows that in the no-spot case, the  $1\sigma$  solutions are limited to the PMS phase for CESAM, and there are no solutions when using the BCAH98 models. At 2 and  $3\sigma$ , the solutions span the entire age range and both models yield very similar results. We note that MS solutions imply stellar masses slightly above that of the Sun, whereas PMS solutions are distributed between  $\sim 0.9$  and  $1.0 M_\odot$ .

Figure 7 compares the solutions in the  $(R_*, M_*)$  space. There is a clear positive correlation between the two quantities. For ages older than 50 Ma, the solutions are confined to high mass values and there is a very good agreement between CESAM and BCAH98. At young ages however, as seen in previous diagrams, the CESAM and BCAH98 solutions differ. The influence of the presence of spots is relatively small.

The results in terms of the stellar mass and radius are summarized in Table 2 for the different age classes. When no solutions were found within  $1\sigma$ , the  $2\sigma$  solutions are indicated.



**Fig. 6.** Constraints obtained for the age as a function of mass of CoRoT-2. The left panels correspond to results obtained by neglecting the effect of spots. The right panels assume an additional uncertainty in the derived  $T_{\text{eff}}$  because of the presence of up to 20% of spots. The upper panels are calculated from CESAM evolution tracks. The lower panels are calculated from BCAH98 evolution tracks. Colors have the same meaning as in Fig. 5.



**Fig. 7.** Constraints obtained on the mass and radius of CoRoT-2. The panels and colors are as in Fig. 6, except that the solutions are separated between those at young (0 – 50 Ma) and old (50 – 500 Ma) ages. Solutions obtained for ages above 500 Ma are indicated in grey.

## 2.5. Constraints on the planet's physical parameters

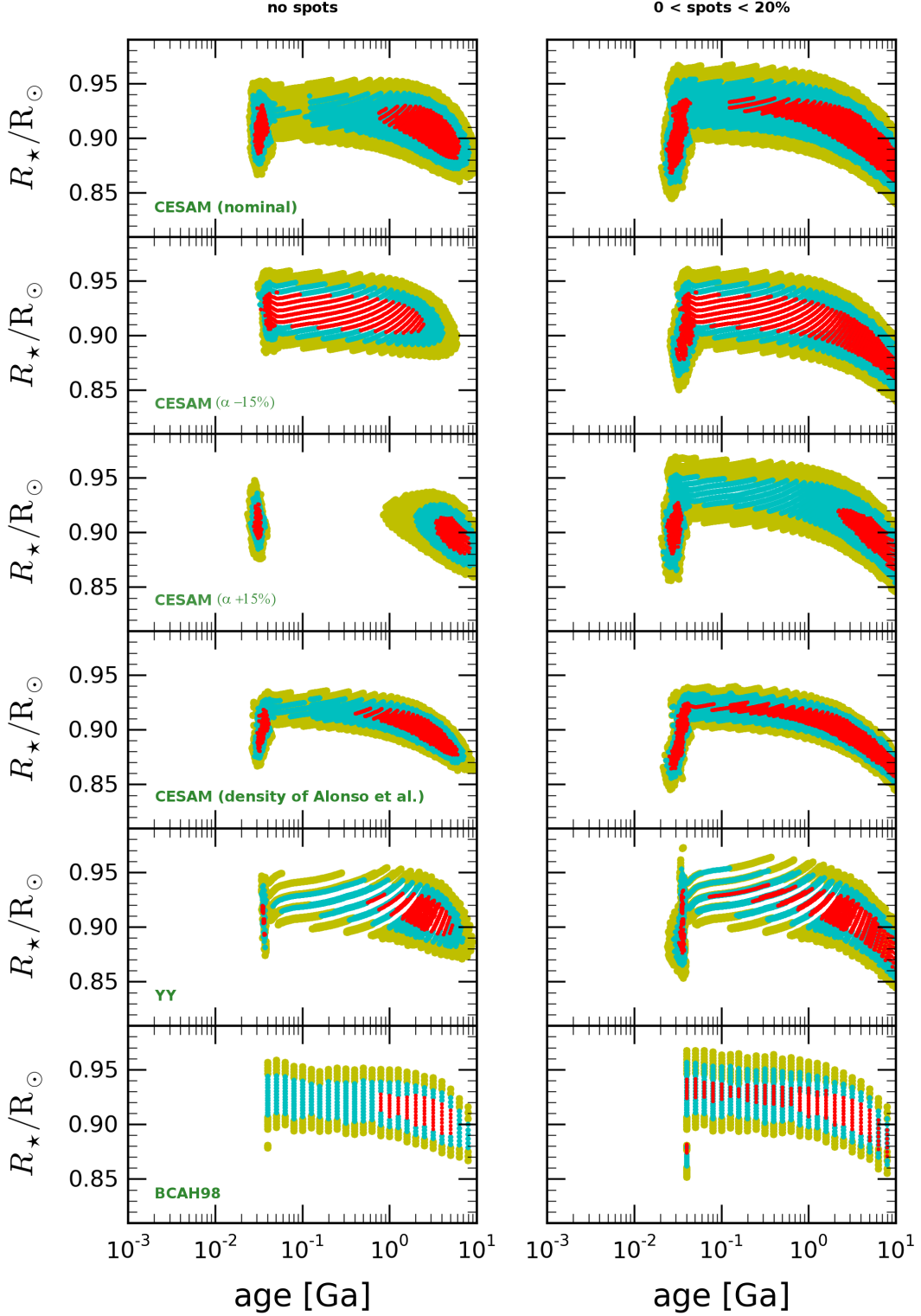
Physical parameters for the planet are derived from the solution for the star using the orbital period  $P_{\text{orb}}$ , the radii ratio  $k = R_p/R_*$ , and the semi-amplitude star velocity  $K$  (see Table 1) using the following equations (e.g. Sozzetti et al. 2007; Beatty et al. 2007)

$$R_p = kR_*, \quad (4)$$

$$M_p = \left( \frac{P_{\text{orb}}}{2\pi G} \right)^{1/3} (M_* + M_p)^{2/3} K \frac{\sqrt{1 - e^2}}{\sin i}, \quad (5)$$

where  $G$  is the gravitational constant,  $e$  the orbital eccentricity, and  $i$  the orbital inclination projected along the line of sight.

The results in terms of the inferred planet mass and radius are shown in Fig. 8 and listed in Table 3. Our inferred planet masses are slightly higher than obtained by Alonso et al. (2008) but in



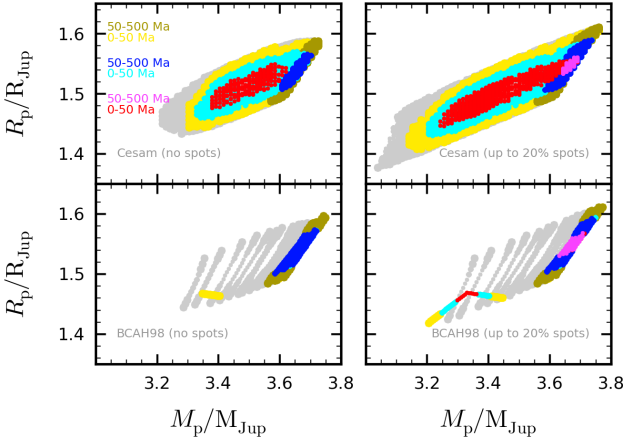
**Fig. 5.** Constraints obtained for the age and radius of CoRoT-2 with different assumptions. The left panels correspond to results obtained by neglecting the effect of spots. The right panels assume an additional uncertainty in the derived  $T_{\text{eff}}$  due to a 0% to 20% fraction of spots. From top to bottom, the panels are: a) Results obtained with the full CESAM calibrated evolution grid. b) Results obtained with CESAM with a mixing length parameter  $\alpha = 0.85\alpha_{\odot}$ . c) Same as previously but with  $\alpha = 1.15\alpha_{\odot}$ . d) Results obtained with the calibrated CESAM evolution grid but a constraint on the stellar density obtained from [Alonso et al. \(2008\)](#) instead of [Gillon et al. \(2010\)](#). e) Results obtained with the YY tracks ([Demarque et al. 2004](#)). f) Results obtained with the BCAH98 tracks ([Baraffe et al. 1998](#)). The colored area corresponds to constraints derived from stellar evolution models matching the stellar density and effective temperature within a certain number of standard deviations: less than  $1\sigma$  (red),  $2\sigma$  (blue), or  $3\sigma$  (yellow).

**Table 2.** Derived mass and radius of the star CoRoT-2 for two different inferred ages.

Model	no spot		0-20% spots	
	$M_*/M_\odot$	$R_*/R_\odot$	$M_*/M_\odot$	$R_*/R_\odot$
	<i>0-50 Ma</i>			
CESAM	$0.97 \pm 0.04$	$0.91 \pm 0.02$	$0.95 \pm 0.07$	$0.90 \pm 0.03$
BCAH98	$1.04 \pm 0.06 (2\sigma)$	$0.93 \pm 0.03 (2\sigma)$	$0.96 \pm 0.08$	$0.90 \pm 0.03$
	<i>50-500 Ma</i>			
CESAM	$1.03 \pm 0.01 (2\sigma)$	$0.92 \pm 0.01 (2\sigma)$	$1.04 \pm 0.01$	$0.93 \pm 0.01$
BCAH98	$1.03 \pm 0.02 (2\sigma)$	$0.92 \pm 0.02 (2\sigma)$	$1.04 \pm 0.02$	$0.93 \pm 0.02$

**Table 3.** Derived mass and radius of the planet CoRoT-2b for two different inferred ages.

Model	no spot		0-20% spots	
	$M_p/M_{\text{Jup}}$	$R_p/R_{\text{Jup}}$	$M_p/M_{\text{Jup}}$	$R_p/R_{\text{Jup}}$
	<i>0-50 Ma</i>			
CESAM	$3.50 \pm 0.20$	$1.52 \pm 0.04$	$3.45 \pm 0.27$	$1.50 \pm 0.06$
BCAH98	$3.68 \pm 0.25 (2\sigma)$	$1.54 \pm 0.06 (2\sigma)$	$3.48 \pm 0.30$	$1.50 \pm 0.06$
	<i>50-500 Ma</i>			
CESAM	$3.65 \pm 0.13 (2\sigma)$	$1.54 \pm 0.03 (2\sigma)$	$3.67 \pm 0.13$	$1.55 \pm 0.03$
BCAH98	$3.65 \pm 0.16 (2\sigma)$	$1.54 \pm 0.04 (2\sigma)$	$3.67 \pm 0.16$	$1.55 \pm 0.04$


**Fig. 8.** Constraints obtained on the mass and radius of CoRoT-2b. The panels and colors are as in Fig. 7.  $R_{\text{Jup}} \equiv 71492$  km

good agreement with the Gillon et al. (2010) results. The corresponding planetary sizes are larger than in both studies because we account for the effect of spot occultations by the transiting planet. The new classes of solutions for the star on the PMS, at ages of between 30 and 40 Ma allow however for slightly smaller  $R_p$  values than the standard MS solutions.

### 3. Planetary evolution models

#### 3.1. Modeling procedure

Our planet evolution models are calculated using CEPAM, a code originally derived from CESAM but accounting for the physics that is specific to planets (Guillot & Morel 1995). We adopt the same two hypotheses as models of other transiting exoplanets (e.g. Guillot 2008), namely: (i) We use the equation of state for hydrogen and helium from Saumon et al. (1995) and a slightly larger value of the helium mass-mixing ratio ( $Y = 0.30$ ) to account for the presence of heavy elements; and (ii) interior Rosseland opacities are calculated from Allard et al. (2001). The

outer boundary condition is slightly modified however to allow for the determination of the impact of atmospheric properties on the planetary evolution. Following Guillot (2010) (see also Hansen 2008), we use a  $T(\tau)$  model for the globally-averaged temperature field in the atmosphere

$$\overline{T^4} = \frac{3T_{\text{int}}^4}{4} \left\{ \frac{2}{3} + \tau \right\} + \frac{3T_{\text{eq}}^4}{4} \left\{ \frac{2}{3} + \frac{2}{3\gamma} \left[ 1 + \left( \frac{\gamma\tau}{2} - 1 \right) e^{-\gamma\tau} \right] + \frac{2\gamma}{3} \left( 1 - \frac{\tau^2}{2} \right) E_2(\gamma\tau) \right\}, \quad (6)$$

where  $\tau$  is the optical depth at thermal wavelengths,  $E_2$  is the exponential integral function of order 2,  $4\pi R_p^2 \sigma T_{\text{eq}}^4$  is the stellar luminosity received by the planet,  $4\pi R_p^2 \sigma T_{\text{int}}^4$  is the planet's intrinsic luminosity and  $\gamma \equiv \kappa_v / \kappa_{\text{th}}$  is the greenhouse factor equal to the ratio of the mean visible opacity to the mean thermal opacity. In addition, we assume that  $P = (\kappa_{\text{th}}/g)\tau$ , and link atmospheric to interior models at the 10 bar pressure level.

The values of the coefficients  $\kappa_{\text{th}}$  and  $\kappa_v$  are parameterized from detailed radiative transfer calculations, as described in Guillot (2010). These, and hence the atmospheric models in general are very uncertain due to the weak constraints on the chemical composition of these atmospheres, the unknown cloud-coverage, the difficulty in estimating how atmospheric dynamics transports heat and chemical elements...etc. In any case, the values that most closely reproduce the models of Fortney et al. (2008) in similar irradiation conditions are  $\kappa_{\text{th}} = 10^{-2} \text{ g cm}^{-2}$  and  $\kappa_v = 4 \times 10^{-3} \text{ g cm}^{-2}$ . These values yield evolution models that closely match our previous calculations (e.g. Guillot 2008). However, to match the observational constraints from measured brightness temperatures we adopt as a baseline scenario with an increased thermal opacity  $\kappa_{\text{th}} = 1.5 \times 10^{-2} \text{ g cm}^{-2}$  (see Sect. 3.4).

The transit radius corresponding to the level for which the chord optical depth is equal to  $2/3$  is calculated as in Guillot (2010) using our assumed visible opacity coefficient  $\kappa_v$ . Because of the large size of CoRoT-2b and its relatively significant mass, we choose to ignore the possibility that a central dense core is present and only consider a fully gaseous planet of approximately solar composition. An increase in the mean molecular weight and/or presence of a core would generally lead to a



smaller planet size and thus increase the problem in reproducing the observations.

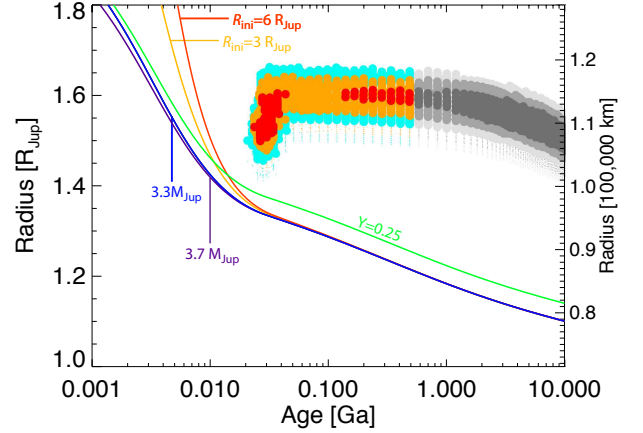
When considering models that include explicit tidal dissipation, we also solve the combined dynamical and structural evolution of the star/planet system including tides as described in the Appendix. We follow changes in the structural planetary parameters (radius  $R$ , pressure  $P$ , temperature  $T$ , intrinsic luminosity  $L$ ) as well as in the dynamical parameters of the system (semi-major axis  $a$ , orbital eccentricity  $e$ , stellar spin  $\Omega_1$ , planetary spin  $\Omega_2$ ). At each evolution timestep, a new value of the tidal heating rate  $H_2$  is calculated by solving implicitly the equations for the dynamical evolution of the system. This heating rate is used for the subsequent structural calculations, and assumed to be dissipated at the center of the planet, so that  $L(r=0) = H_2$ . (For a discussion of how the depth of the dissipation affects the planet's structure and evolution, see Guillot & Showman (2002).) The orbital evolution also modifies the atmospheric boundary condition by altering the irradiation flux. The equilibrium temperature  $T_{\text{eq}}$  is hence recalculated at each timestep. Our approach to the tidal dissipation calculation is thus similar to that chosen in other calculations (Ibgui & Burrows 2009; Miller et al. 2009), but it is based on the equations derived by Barker & Ogilvie (2009) instead of those of Jackson et al. (2008). The main differences are that the relations are valid for higher values of the eccentricity (see also Leconte et al. 2010) and include the secular evolution of stellar and planetary spins.

### 3.2. Standard evolution models

We compare in Fig. 9 observational constraints on age and planetary size to standard evolution models with slightly different assumptions about mass, initial planetary radius, and helium content. The standard models are defined by the planet only contracting from an initial radius  $R_{\text{ini}}$  as a result of the loss of its internal entropy: the only reservoir of energy is the initial gravitational energy  $\int Gm/r dm$ . The atmospheric boundary condition corresponds to our baseline case.

Our fiducial model has a mass of  $M = 3.5 M_J$ , an initial radius  $R_{\text{ini}} = 2 R_J$ , and an equivalent helium mass mixing ratio  $Y = 0.30$ . It falls short of reproducing the inferred radius by  $\sim 20\%$  or more, except at young ages: for pre-main-sequence solutions at 30–40 Ma, the discrepancy is reduced to about 10%. Within the error bars, models with different masses have almost identical evolutions and therefore planetary mass is not a significant parameter in the problem (this is because CoRoT-2b lies in the particular regime of mass for which the radius is almost independent of mass, which for isolated objects corresponds to a maximum in the mass-radius relation -see Guillot (2005)). In a similar way, changing the initial radius affects the evolution only in the first million years: the initial conditions are rapidly forgotten. One may wonder whether a different composition, in particular a different helium abundance, would have a stronger effect on evolution? As shown in Fig. 9, models with  $Y = 0.25$  indeed yield a  $\sim 4\%$  larger size than for  $Y = 0.30$ , but this again falls short in explaining the large size of the planet.

These calculations confirm that CoRoT-2b is an anomalously large planet, a result already obtained by Alonso et al. (2008), Leconte et al. (2009), and Miller et al. (2009). However it also demonstrates the fact that the planet's young age is likely to be a crucial factor in explaining its size, both because of the possibility that the planet is initially quite large, and because our stellar evolution models yield solutions at 30–40 Ma that are closer to the theoretical evolution tracks than at any later times.



**Fig. 9.** Contraction of CoRoT-2b compared to its measured radius and inferred age. Our fiducial model has an initial radius  $R_{\text{ini}} = 2 R_J$ , mass  $M_p = 3.5 M_J$ , and equivalent helium mass-mixing ratio  $Y = 0.30$ . The evolution for models with different initial radii  $R_{\text{ini}}$  (3 to  $6 R_J$ ), different masses (3.3 to  $3.7 M_J$ ), or a different value of  $Y$  (0.25) are shown as labeled.

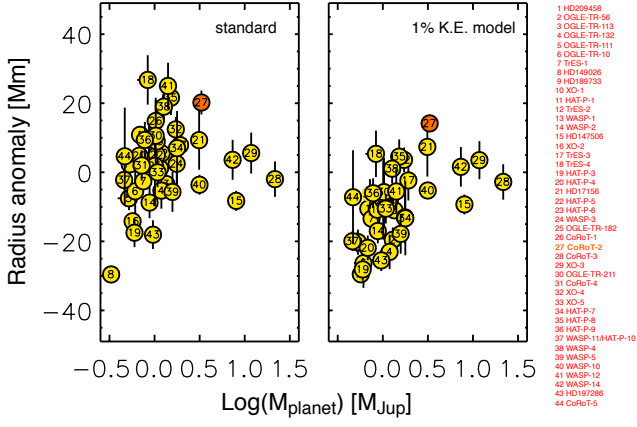
### 3.3. CoRoT-2b among its peers

It is instructive to compare CoRoT-2b to an ensemble of other transiting giant planets. Among these, CoRoT-2b may not be the largest (it is smaller than CoRoT-1b, HAT-P-8b, TrES-4b, and the present record-holder WASP-12b), but it remains the most difficult to reconcile with present-day models. This is most easily shown by ranking the planets in terms of their radius anomaly, i.e. the difference between its measured radius and the one predicted by models of a pure solar-composition planet of the same mass and age (Guillot et al. 2006). As shown by Fig. 10, when using standard models, CoRoT-2b has a positive, large radius anomaly of 20000 km, but still smaller than that of HAT-P-8b, TrES-4b, and WASP-12b. However, for these last three planets, their large radius can be explained within the error bars by an additional heat source equivalent to 1% of the incoming stellar luminosity deposited at the planet's center (see Guillot 2005 and references therein). As shown in the right panel of Fig. 10, this is not true for CoRoT-2b: because of its large mass, the planet tends to contract rapidly and therefore requires special conditions to explain its large size.

### 3.4. CoRoT-2b's atmosphere

We now consider how models of the planet's atmosphere affect its evolution. Remarkably, secondary transits of CoRoT-2b were detected in the optical from CoRoT lightcurves (Alonso et al. 2009; Snellen et al. 2010) and in the infrared from Spitzer IRAC observations (Gillon et al. 2010) as well as ground-based measurements (Alonso et al. 2010a). These directly probe the planetary atmosphere and are thus key constraints of the outer boundary conditions used in the evolution modeling.

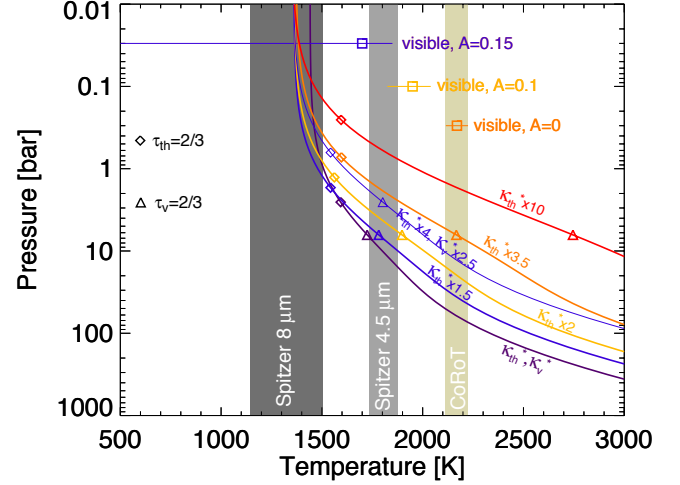
The fluxes inferred from these measurements are equivalent to brightness temperatures of  $1325 \pm 180$  K at  $8 \mu\text{m}$  and  $1805 \pm 70$  K at  $4.5 \mu\text{m}$  (Gillon et al. 2010; Snellen et al. 2010). Additional ground-based measurements yield  $T_b = 1890^{+260}_{-350}$  K in the  $K_s$  band ( $\sim 2.1 \mu\text{m}$ ) and an upper limit of 2250 K in the H band ( $\sim 1.6 \mu\text{m}$ ) (Alonso et al. 2010a). In the optical, independent studies yield brightness temperatures that are very similar



**Fig. 10.** Radius anomaly (difference between observed and modeled radius –see text–) as a function of planetary mass (in log) for a selection of known transiting giant planets. *Left panel:* Standard models (including stellar irradiation but no extra heat source) are used for the comparison. *Right panel:* Models assume an extra heat source at the planet’s center equivalent to 1% of the incoming stellar heat flux (see Guillot & Showman 2002). CoRoT-2b is labeled “27”. It is the most anomalously large planet on the right panel.

within error bars, i.e.  $2120^{+90}_{-110}$  K (Alonso et al. 2009, 2010b) and  $2170 \pm 50$  K (Snellen et al. 2010). A crucial consequence that can be derived is that *independently of hypotheses about the atmospheric composition and opacity sources, the day-side atmosphere of CoRoT-2b is characterized by physical temperatures that are as low as  $1325 \pm 180$  K, and at least as high as  $1805 \pm 70$  K.* The case of the optical brightness measurements are more complex to interpret because they may arise from either direct emission or a reflection of the incoming stellar flux (Alonso et al. 2009; Snellen et al. 2010). In the limit of a geometric albedo of 0.2, the flux would be entirely due to direct reflection and thus provide no information about the atmospheric temperature profile. In contrast, a zero albedo would imply that the flux in the optical is thermal emission from the planet, and that the corresponding temperatures are high.

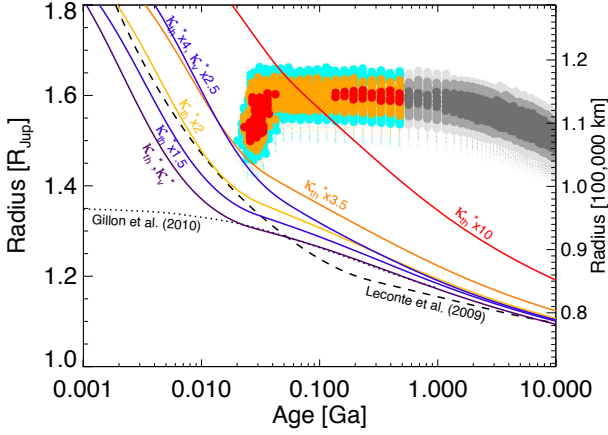
These temperature constraints are compared in Fig. 11 to temperature profiles calculated for CoRoT-2b in the framework of our semi-gray analytical model assuming a full redistribution of the incoming stellar flux (see Eq. (6) and Guillot 2010). The value of the intrinsic flux  $T_{\text{int}} = 1000$  K was chosen to match that of models with a size  $\sim 1.5 R_{\text{Jup}}$ , as observed. Using values of the thermal and visible opacities calibrated to detailed atmospheric models (Fortney et al. 2008) (labeled  $\kappa_{\text{th}}^*$ ,  $\kappa_{\text{v}}^*$  in the figure), we derive a temperature profile that is difficult to reconcile with the Spitzer and CoRoT brightness temperatures: the temperature range spanned by the atmosphere at mean optical levels smaller than unity is small: from about 1400 to 1600 K. This implies that to explain the observations with this model, one needs to invoke (i) an albedo of  $\sim 0.2$ , (ii) a high-opacity at  $8 \mu\text{m}$ , and (iii) a very-low opacity (lower than at visible wavelengths) at  $4.5 \mu\text{m}$ . This combination of factors appears to be unlikely. Furthermore, one should consider that the low  $8 \mu\text{m}$  temperature has to be emitted from high levels in the atmosphere. Because the radiative timescale is shorter at high altitudes (Showman & Guillot 2002; Iro et al. 2005), its temperature may have to be closer to the day-side than global average, which would make the problem even worse.



**Fig. 11.** Possible atmospheric pressure-temperature profiles for CoRoT-2b compared to observational constraints. The brightness temperatures obtained by Spitzer IRAC at 4.5 and  $8 \mu\text{m}$  (Gillon et al. 2010) and by CoRoT in the optical (Alonso et al. 2010b; Snellen et al. 2010) are indicated by vertical grey bands. In the case of the optical brightness, the corresponding physical atmospheric temperatures depend on the atmospheric geometric albedo ( $A = 0$  to 0.15), and are indicated by squares and with error bars. Temperature profiles are calculated on the basis of a semi-gray analytical model (Guillot 2010), with fiducial values of the thermal and visible opacities  $\kappa_{\text{th}}^* = 0.01 \text{ cm}^2 \text{ g}^{-1}$ ,  $\kappa_{\text{v}}^* = 0.004 \text{ cm}^2 \text{ g}^{-1}$ , and  $T_{\text{int}} = 1000$  K. The different lines correspond to different values of these coefficients (as labeled). The values of the assumed Bond albedo are  $A = 0$  (purple, orange, red curves),  $A = 0.1$  (yellow curve) and  $A = 0.15$  (blue curves). The levels for which thermal and visible optical depths equal  $2/3$  are indicated by diamonds and triangles, respectively.

For these reasons, we consider alternative models. We restrict ourselves to models without a temperature inversion, both because this is not predicted by dedicated radiative transfer models (Gillon et al. 2010; Snellen et al. 2010), and it would make the planetary radius problem more severe. Figure 11 presents a variety of alternative profiles. The temperature range in the low-optical thickness part of the atmosphere is directly related to the factor  $\gamma \equiv \kappa_{\text{v}}/\kappa_{\text{th}}$ , with a low  $\gamma$  value implying a strong greenhouse effect. We find that models that can more readily reproduce both the infrared and visible brightness temperatures are those with  $\gamma \approx 0.2$  to 0.4. These models are also consistent with the secondary transit of CoRoT-2b being detected in CoRoT’s red channel and not in the blue and green channels (Snellen et al. 2010), implying that it indeed originates mostly from direct planetary emission rather than stellar light reflection. They are also consistent with their smaller implied albedos, in line with the low limit  $A_{\text{g}} = 0.038 \pm 0.045$  obtained for HD209458b (Rowe et al. 2008), a planet with a similar equilibrium temperature. Larger greenhouse effects (i.e. the red curve in fig. 11) are not consistent with the models because they would tend to yield brightness temperatures that are larger than inferred.

Compared to traditional atmospheric models, this larger greenhouse effect may be achieved by several means: the presence of clouds, of photochemical products, or generally of minor species that are efficient infrared absorbers but are transparent at visible wavelengths. Complications arising from chromatic and



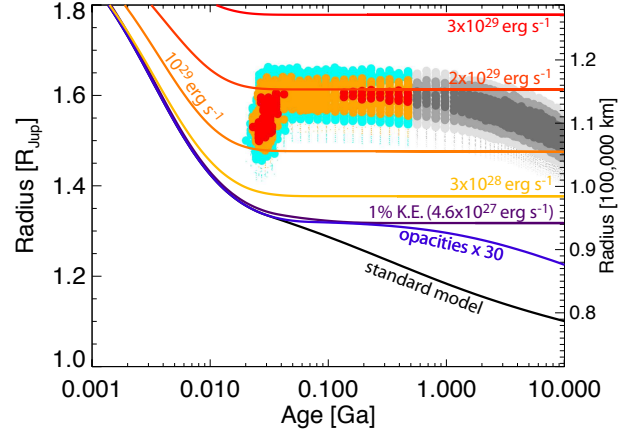
**Fig. 12.** Transit radius of CoRoT-2b as a function of age. The colored areas indicate constraints obtained from photometric, spectroscopic, radial-velocity data and stellar evolution models. The colors are a function of the distance to the effective temperature-stellar density constraint ellipse in standard error units: within  $1\sigma$  (red),  $2\sigma$  (yellow) and  $3\sigma$  (blue). The star’s activity implies an age smaller than  $\sim 0.5$  Ga, which indicated by solutions in shades of grey. The main constraint is obtained for a lightcurve analysis that includes the presence of spots. An analysis that does not account for spots yields a  $\sim 3\%$  smaller radius, indicated by a dotted area (see text). The plain curves are obtained from standard evolution models using atmospheric boundary conditions that are parameterized by mean infrared  $\kappa_{\text{th}}$  and visible  $\kappa_{\text{v}}$  opacity coefficients, as in Fig. 11. The dashed and dotted curves are models from Leconte et al. (2009) and Gillon et al. (2010), respectively.

dynamical effects should of course be taken into account, but are should not change qualitatively the conclusions of this work.

### 3.5. Impact of atmospheric models on the planetary evolution

Planetary evolution models calculated with different atmospheric boundary conditions are compared in Fig. 12 to standard evolution models for this planet available in the literature and to our inferred age/size constraints for CoRoT-2b. We first note that our baseline models (with opacities  $\kappa_{\text{th}}^*$  and  $\kappa_{\text{v}}^*$ ) are a close match to the models of Gillon et al. (2010) after about 20 Ma, and that they reproduce relatively well the models of Leconte et al. (2009), within 5%, over the whole age range. In this last case, the differences in behavior may be attributed to our fiducial model having slightly lower infrared opacities and a smaller  $\gamma$  value. Because the internal structure part of the calculation should be very similar, this highlights that even with similar hypotheses (a solar composition cloud-free atmosphere), detailed radiative transfer atmospheric models yield predictions that differ in a relatively significant way (see also Guillot 2010).

As previously, most models are unable to reproduce the constraints. However, two of them do intersect the constraint area at young ages between 30 and 40 Ma. These are models for which the thermal atmospheric opacity has been increased by a factor 3.5 to 4, relatively independently of visible opacities. The consequence of the larger  $\kappa_{\text{th}}$  is to reduce the amount of initial heat lost by the planet at young ages. The intersection is small, but could become larger if we considered that non-grey models may enable the deep atmospheric temperatures to increase



**Fig. 13.** Contraction of CoRoT-2b relative to its measured radius and inferred age (see fig. 12). The evolution models are labeled as follows: *standard* (black): irradiated, solar-composition planet with no extra heat source; *1% K.E.* (blue): 1% of the incoming stellar flux is assumed to be dissipated at the planet’s center; *opacities×30* (light blue): opacities have been artificially multiplied by 30 compared to the standard model; *10<sup>29</sup>* (red): model in which  $10^{29}$  erg  $\text{s}^{-1}$  is deposited at the planet’s center.

while the visible brightness temperature remains constant, and also that the planet probably formed at least a few million years after the star. As shown in Fig. 12, for an even stronger greenhouse effect (a smaller  $\gamma$ ), the present size of the planet may be reached at even older ages. However, this extreme model is unlikely because it disagrees with the inferred visible brightness temperature (see § 3.4).

The present size of CoRoT-2b can thus be explained by the combination of a young age of between 30 and 40 Ma, and additional opacity sources (gases/clouds) in the atmosphere. We note that Burrows et al. (2007) also proposed an increase in atmospheric opacities to explain the large sizes of exoplanets. Our solution is similar, but we emphasize that this increase should concern more particularly the opacities at infrared wavelengths.

### 3.6. Alternative recipes

Alternative models invoked to explain the large sizes of other exoplanets are unlikely to work. As shown in Fig. 13, the kinetic-energy dissipation model proposed by (Guillot & Showman 2002) and used successfully for most known transiting planets (Guillot et al. 2006; Guillot 2008) fails for CoRoT-2. This is also the case of a considerable -30 fold- increase in interior opacities that would also explain the sizes of most transiting planets (Guillot 2008). In fact, as already noted (Alonso et al. 2008; Gillon et al. 2010), the energy dissipation deep inside the planet required to explain the present-day radius is enormous, on the order of  $10^{29}$  erg  $\text{s}^{-1}$ . This is about 30000 times the present intrinsic luminosity of Jupiter. It is also about 1/4th of the power that the planet receives from its parent star.

After that provided by stellar radiation, the most important potential source of energy is that taken from the planetary orbit. When moving CoRoT-2b from infinity to its present orbit,  $\Delta E = GM_* M_p / 2a \approx 10^{45}$  erg have to be dissipated. If this energy dissipation were to occur entirely in the planet, the maximum amount of time one would be able to maintain a  $10^{29}$  erg  $\text{s}^{-1}$  dissipation rate is  $\sim 300$  Ma.

### 3.7. The effect of tides

As originally proposed by [Bodenheimer et al. \(2001\)](#) and [Gu et al. \(2003\)](#) and later studied by many authors (e.g. [Jackson et al. 2008](#); [Ibgui & Burrows 2009](#); [Miller et al. 2009](#)), stellar tides provide a way to transfer gravitational energy from the planetary orbit into the planet and either slow its contraction, or even produce a size inflation. Models coupling the equations governing the dynamical evolution of the star+planet system with the physical planetary evolution rely however on a crucial assumption: that dissipation occurs at a sufficient depth in the planet interior, i.e. roughly within the planet's convective zone, deeper than a few 100 bars or so (see [Guillot & Showman 2002](#), for a discussion). The mechanisms responsible for the dissipation are yet unknown, and may occur either high up in the atmosphere ([Lubow et al. 1997](#)) or throughout the planetary interior ([Ogilvie & Lin 2004](#)).

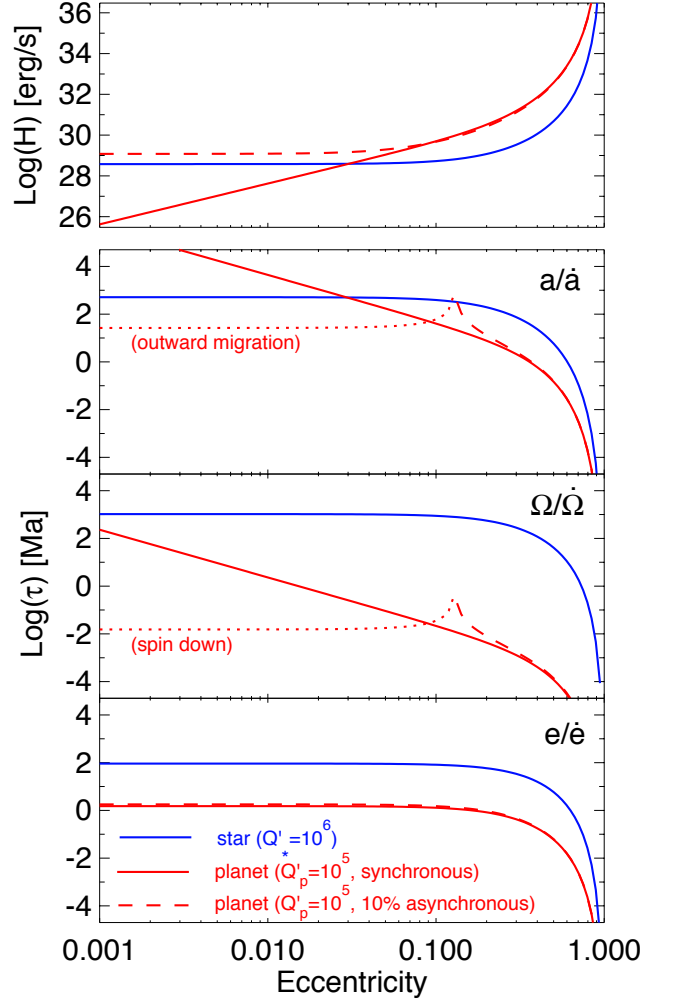
Following [Gillon et al. \(2010\)](#), we present models of the dynamical and physical evolution of the CoRoT-2 system caused by the action of stellar and planetary tides. We maximize the efficiency of the heat dissipation by assuming that it is entirely deposited at the center of the planet. We use the dynamical evolution equations derived by [Barker & Ogilvie \(2009\)](#) and include high order terms in eccentricity and equations for the evolution of the stellar and planetary spin (see Appendix). On the basis of the calculations by [Jackson et al. \(2008\)](#), we explore values of the tidal factor  $Q_p$  between  $10^5$  and  $10^6$ , and of  $Q_*$  of  $10^5$  and higher.

We analyze in Fig. 14 how the tidal heating rates and the orbital timescales depend on the eccentricity of the system using all other known parameters of the system. We first note that for values of the eccentricity  $e > 0.3$ , these become extremely stiff functions of  $e$ . This implies that any initially high eccentricity value causes a rapid evolution of the system which is hardly predicted by models developed only to second order in eccentricity ([Jackson et al. 2008](#); [Ibgui & Burrows 2009](#); [Miller et al. 2009](#); [Gillon et al. 2010](#)). We find that a 10% asynchronous planet would dissipate the required luminosity, but the corresponding synchronization timescale is extremely short, about 10,000 years.

At low eccentricities, an inward migration with a timescale  $\sim 1$  Ga ( $Q_*/10^6$ ) results from tides raised by the planet onto the star. At high eccentricities and for our choice of  $Q$  factors, tides raised by the star onto the planet begin to dominate and cause a decrease in the semi-major axis that is concomitant to the circularization of stellar tides on the planet. The orbit circularization is mostly caused by the planet, unless  $Q_p > 10Q_*$ . While the planet is synchronized efficiently, the star is found to be spun up by the planet relatively slowly  $\sim 1$  Ga for eccentricities  $e < 0.2$ .

Given its inferred eccentricity, the present size of CoRoT-2b may be explained by tides only within two scenarios: (i) By a very low  $Q_p$  value and a forced eccentricity due to the presence of another planet. (ii) By an initial stage of high-dissipation followed by a rapid circularization and contraction. The former case is unlikely (see also [Gillon et al. 2010](#)). The last possibility requires that the circularization proceeds faster than the planet's contraction.

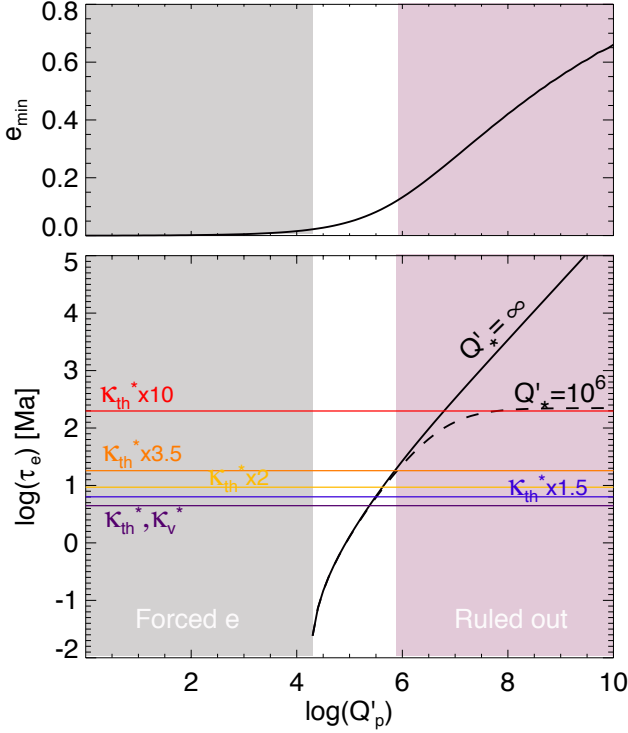
In Fig. 15 we explore the constraints that can be derived on  $Q_p$ . Using the equations in the Appendix, we calculate the minimum eccentricity required for tides to dissipate  $10^{29}$  erg s $^{-1}$  in the planet (top panel). We then calculate the time required for the eccentricity to decline from this value to the observed one (we assumed  $e = 0.02$ ). This time is compared to the time required to contract from 2 to 1.5  $R_J$  based on our different atmospheric



**Fig. 14.** Heating rates and dynamical timescales for the orbital evolution of the CoRoT-2 system as a function of the orbital eccentricity. The star and planet are assumed to have their present mass and orbital period, and tidal dissipation factors  $Q_* = 10^6$ ,  $Q_p = 10^5$ . The blue curves refer to the star, the red curves to the planet. The planet is assumed to be either synchronously rotating (spin period=orbital period) (plain lines), or to rotate 10% faster than synchronous rotation (dashed lines). From top to bottom, the panels show various important quantities: (a) *Heating rates* due to tidal dissipation in the planet and in the star. (b) *Migration timescale* due to the star and the planet. Migration is inward except in the asynchronous case due to the planet's spin down for eccentricities smaller than  $\sim 0.12$ . (c) *Spin-up timescale*: The star is spun up by the planet in all cases. The planet is generally spun up, except in the asynchronous case (see text). (d) *Circularisation timescale*: The evolution towards a circular orbit is due to both stellar and planetary tides.

models (bottom panels). We thus derive an upper limit to the planetary tidal factor  $Q_p \sim 10^6$  that is similar to the  $10^{5.5}$  quoted by [Gillon et al. \(2010\)](#). This estimate does not account for the effect of migration but we propose that it should be relatively realistic.

We show in Fig. 16 a few example results of the full dynamical calculation. One problem we faced was the existence of a runaway inflation of the planet especially for high values of the eccentricity. In order to maximize the ensemble of solutions (and ease the calculation), we set an arbitrary saturation value



**Fig. 15.** Minimum eccentricity and circularization timescale as a function of tidal dissipation factor  $Q'_p$ . *Top panel:* Eccentricity required to reach a dissipation rate  $H = 10^{29}$  erg s $^{-1}$  in the planet. *Bottom panel:* Time to evolve from the minimum eccentricity to the observed  $e \sim 0.02$  for two values of the stellar tidal factor,  $\infty$  (dashed) and  $10^6$  (plain). The horizontal lines show the times required for CoRoT-2b to contract from 2 to 1.5  $R_J$ , with the atmospheric boundary conditions as in Fig. 11.

at  $H = 2 \times 10^{29}$  erg s $^{-1}$  and increase the planetary  $Q_p$  factor accordingly. Using this recipe, we are able to reproduce approximately the solutions found by Gillon et al. (2010), but find that the contraction is too fast compared to our age constraints. We were unable in general to find solutions when starting from a fixed initial eccentricity at time  $t = 0$ . We can obtain transient solutions instead when including inward migration or a late increase in the eccentricity. A plausible scenario could thus be that CoRoT-2b had a recent ( $\lesssim 20$  Ma) planetary encounter leaving it into an eccentric orbit (e.g. Jurić & Tremaine 2008; Ford & Rasio 2008). Another similar possibility is that the planet had a Kozai interaction with another distant body (e.g. Fabrycky & Tremaine 2007), its orbit was changed to one of high eccentricity, and circularization began less than 20 Ma ago.

### 3.8. A recent planetary impact?

Another alternative is of course that CoRoT-2b experienced a planetary impact in the past  $\sim 20$  Ma. Jurić & Tremaine (2008) find that up to about 20% of planets may experience mergers in systems with multiple embryos of the same mass. This probability is extremely dependent on initial conditions, but illustrates that giant impacts may not be an extremely rare possibility. We illustrate the possible mass of such an impactor with an

extremely simple model. The energy required to inflate the precursor of CoRoT-2b is

$$\Delta E_{\text{grav}} \sim \frac{GM_0^2}{R_0} \beta, \quad (7)$$

where  $M_0$  is the mass of the precursor,  $R_0$  its size, and  $\beta$  is the radius factor increase required to explain CoRoT-2b's present size. We assume that the collision takes place at the escape velocity of the precursor, and that half of the kinetic energy is transferred into increasing the internal energy of the final planet, i.e., that

$$\Delta E_{\text{collision}} \sim \frac{1}{4} \frac{GM_0 M_1}{R_0}, \quad (8)$$

where  $M_1$  is the mass of the impactor. Using  $M_p \sim M_0 + M_1$  as the present mass of CoRoT-2b, and  $\Delta E_{\text{collision}} \sim \Delta E_{\text{grav}}$  we obtain

$$M_1 \sim \frac{\beta}{\beta + 1/4} M_p. \quad (9)$$

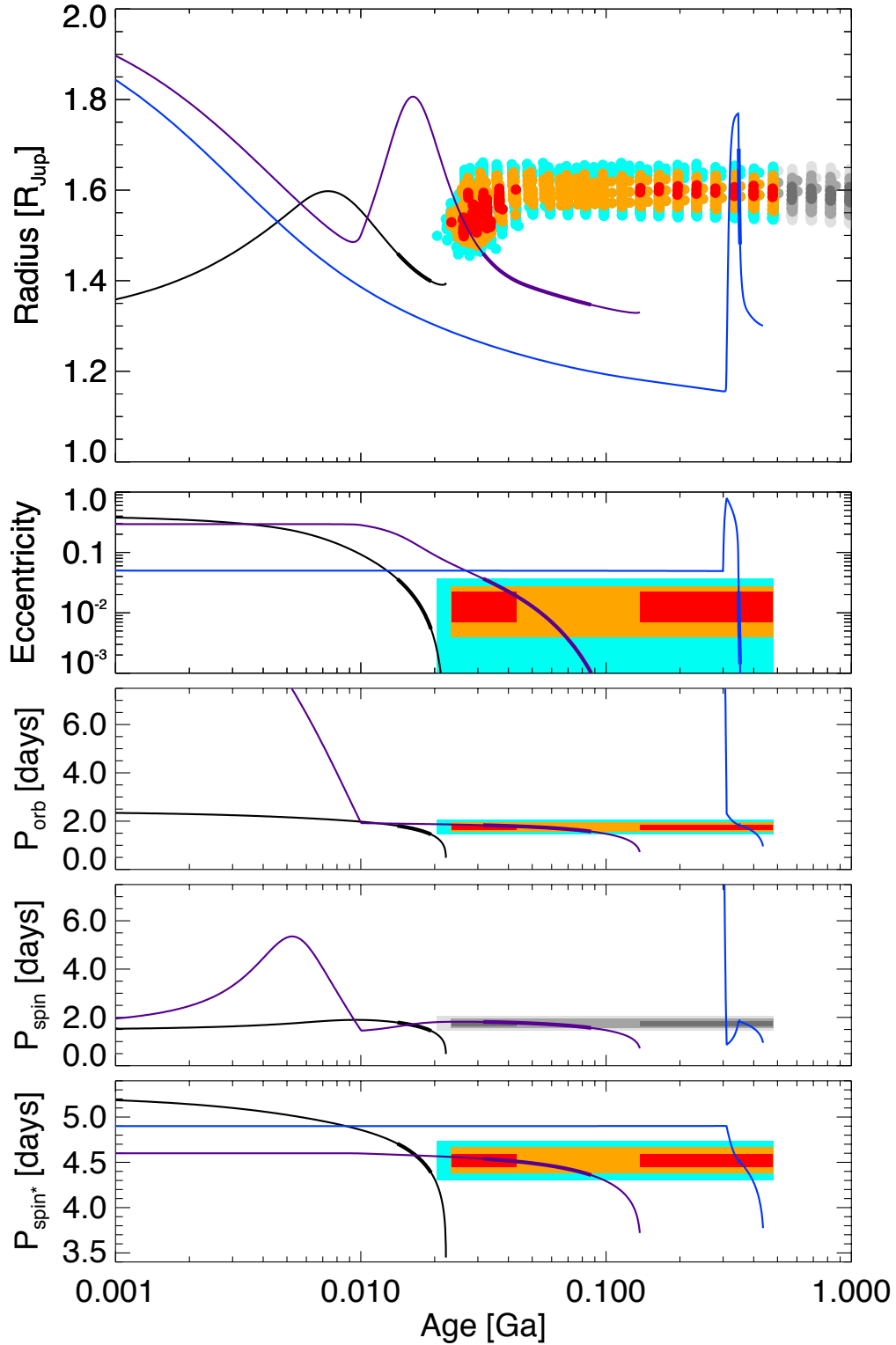
This relation is independent of the initial planetary radius. This is because both the impact energy and the inflation energy have the same  $R_0$  dependency. If we assume  $\beta \approx 1/4$ , we find  $M_1 \sim 1/2 M_p \sim 1.75 M_J$ . If the system is really young, the need for a large impactor decreases: e.g. with  $\beta \approx 0.05$ , we obtain  $M_1 \sim 1/6 M_p \sim 0.6 M_J$ . These values of course represent extremely simplified examples but they show that unless planets can be accelerated to much higher velocities (this would probably require a fourth, massive high density object, i.e. a brown dwarf), only collisions between giant planets would provide the necessary energy to significantly inflate CoRoT-2b.

## 4. Conclusion

We have combined stellar and planetary evolution models to help us develop a consistent scenario to understand the formation and evolution of the CoRoT-2 system. Although stellar spots are important in the lightcurve analysis and do have an important impact when deriving the planetary radius, we have demonstrated that their consequences on the derived stellar properties are modest and can be modeled as an additional uncertainty in the derived effective temperature of the star.

We have presented evidence for the youth of the CoRoT-2 system. The rapid  $\sim 4.5$  day spin of the star is of course a strong indication of a young age, but we have also shown that a very promising ensemble of solutions occurs on the pre-main-sequence phase of the parent star, yielding ages of between 30 and 40 Ma. By combining constraints obtained on the atmosphere from both brightness temperature measurements and stellar and planetary evolution models, we found that three scenarios can explain the present large size of planet CoRoT-2b. All these imply a recent event that took place less than 40 Ma ago.

1. Its atmosphere is about 3 to 4 times more opaque in the infrared than usually thought, and the system is indeed 30 to 40 Ma old.
2. The CoRoT-2 system involved multiple planets and less than 20 Ma ago, close encounters between the planets brought two into collision. The CoRoT-2b impactor would need to have had a relatively significant fraction of the total planetary mass.
3. The CoRoT-2 system involved multiple planets and less than 20 Ma ago, close encounters between the planets left CoRoT-2b on an eccentric orbit. This orbit has been almost circularized, but remains in the transient heating phase. The parameter space required in terms of initial eccentricities and orbital



**Fig. 16.** Evolution of the CoRoT-2 system in the presence of tides, as a function of age expressed in billion years. From top to bottom, the five panels are: (a) Planet's transit radius; (b) Planet's orbital eccentricity; (c) Planet's orbital period in days; (d) Planet's spin period in days; (e) Star's spin period in days. The observational constraints are indicated by colored areas (see fig. 12). For visibility purposes, the constraint on the orbital period has been increased by a factor  $10^5$ . Three models are shown: *Black lines*: A model with  $Q'_p = 3 \times 10^5$ ,  $Q'_* = 10^5$ ,  $e_{\text{ini}} = 0.4$ ,  $a_{\text{ini}} = 0.04$  AU, corresponding to a preferred model of Gillon et al. (2010). *Purple lines*: A model including migration for the first 10 Ma, and  $Q'_p = 10^6$ ,  $Q'_* = 10^6$ ,  $e_{\text{ini}} = 0.4$ ,  $a_{\text{ini}} = 0.13$  AU. *Blue lines*: A close-encounter model, for which the eccentricity is suddenly raised to  $e \sim 0.77$  after 300 Ma, presumably due to close encounters with another planet. This assumes  $Q'_p = 10^5$ ,  $Q'_* = 10^6$ ,  $a_{\text{ini}} = 0.1$  AU. The thick parts of the lines corresponds to epochs for which the eccentricity and orbital periods are in agreement with the observations (see text).

distances for this to have occurred is small, and we found that it generally requires a saturation of the tidal heating to avoid the complete loss of the planet.

The detection of abundant lithium in CoRoT-2 confirms that the star is young: the comparison with data obtained for open clusters indicate that its age should be between 30 and 320 Ma (Gillon et al. 2010). However, this may be an overestimation because lithium may be more easily destroyed in the presence of a massive protoplanetary disk (see Bouvier 2008). Several kinds of observations of CoRoT-2 would shed light on its nature. The detection of an infrared excess or a debris disk would be an indication that the system is young even though there is a wide spread in disk ages (e.g. Hillenbrand et al. 2008). Searching for distant companions would also help especially given the possibility that the planet's eccentricity may have been pumped up by Kozai interactions with a third body before being efficiently damped by tides. Last but not least, the determination of a complete infrared lightcurve including both the primary and the secondary transit would be extremely valuable to constrain the planet's atmospheric properties, in particular its day-night heat redistribution efficiency. It would also help us to determine the planet-to-star radius ratio in way that is less affected by systematic errors due to stellar activity. With similar observations in the visible, one would be able to test our assumption that the signal detected in the CoRoT lightcurves is due to thermal emission from deep levels in the planet. Since the radiative timescales rapidly increase with depth (Iro et al. 2005), we would expect that phase variations in the visible are smaller than in the infrared.

## Acknowledgments

We thank an anonymous referee for helpful comments. The present study was made possible thanks to observations obtained with CoRoT, a space project operated by the French Space Agency, CNES, with participation of the Science Program of ESA, ESTEC/RSSD, Austria, Belgium, Brazil, Germany and Spain. We acknowledge the support of the *Programme National de Planétologie* and of CNES. Computations have been done on the *Mesocentre SIGAMM* machine, hosted by the Observatoire de la Côte d'Azur.

## References

Allard, F., Hauschildt, P. H., Alexander, D. R., Tamanai, A., & Schweitzer, A. 2001, *ApJ*, 556, 357  
 Alonso, R., Auvergne, M., Baglin, A., et al. 2008, *Astron. & Astrophys.*, 482, L21  
 Alonso, R., Deeg, H. J., Kabath, P., & Rabus, M. 2010a, *AJ*, 139, 1481  
 Alonso, R., Guillot, T., Mazeh, T., et al. 2009, *Astron. & Astrophys.*, 501, L23  
 Alonso, R., Guillot, T., Mazeh, T., et al. 2010b, *Astron. & Astrophys.*, in press  
 Ammler-von Eiff, M., Santos, N. C., Sousa, S. G., et al. 2009, *Astron. & Astrophys.*, 507, 523  
 Baraffe, I., Chabrier, G., Allard, F., & Hauschildt, P. H. 1998, *Astron. & Astrophys.*, 337, 403  
 Baraffe, I., Chabrier, G., Barman, T. S., Allard, F., & Hauschildt, P. H. 2003, *Astron. & Astrophys.*, 402, 701  
 Barker, A. J. & Ogilvie, G. I. 2009, *MNRAS*, 395, 2268  
 Beatty, T. G., Fernandez, J. M., Latham, D. W., et al. 2007, *ApJ*, 663, 573  
 Bodenheimer, P., Lin, D. N. C., & Mardling, R. A. 2001, *ApJ*, 548, 466  
 Bouchy, F., Queloz, D., Deleuil, M., et al. 2008, *Astron. & Astrophys.*, 482, L25  
 Bouvier, J. 2008, *Astron. & Astrophys.*, 489, L53  
 Burrows, A., Hubeny, I., Budaj, J., & Hubbard, W. B. 2007, *ApJ*, 661, 502  
 Czesla, S., Huber, K. F., Wolter, U., Schröter, S., & Schmitt, J. H. M. M. 2009, ArXiv e-prints  
 Demarque, P., Woo, J., Kim, Y., & Yi, S. K. 2004, *ApJS*, 155, 667  
 Eggleton, P. P., Kiseleva, L. G., & Hut, P. 1998, *ApJ*, 499, 853  
 Fabrycky, D. & Tremaine, S. 2007, *ApJ*, 669, 1298  
 Ford, E. B. & Rasio, F. A. 2008, *ApJ*, 686, 621

Fortney, J. J., Lodders, K., Marley, M. S., & Freedman, R. S. 2008, *ApJ*, 678, 1419  
 Fröhlich, C. & Lean, J. 2004, *A&A Rev.*, 12, 273  
 Gillon, M., Lanotte, A. A., Barman, T., et al. 2010, *Astron. & Astrophys.*, 511, A3+  
 Grevesse, N. & Noels, A. 1993, *Physica Scripta Volume T*, 47, 133  
 Gu, P., Lin, D. N. C., & Bodenheimer, P. H. 2003, *ApJ*, 588, 509  
 Guillot, T. 2005, *Annual Review of Earth and Planetary Sciences*, 33, 493  
 Guillot, T. 2008, *Physica Scripta Volume T*, 130, 014023  
 Guillot, T. 2010, submitted to *Astron. & Astrophys.*  
 Guillot, T. & Morel, P. 1995, *A&AS*, 109, 109  
 Guillot, T., Santos, N. C., Pont, F., et al. 2006, *Astron. & Astrophys.*, 453, L21  
 Guillot, T. & Showman, A. P. 2002, *Astron. & Astrophys.*, 385, 156  
 Gustafsson, B., Edvardsson, B., Eriksson, K., et al. 2008, *Astron. & Astrophys.*, 486, 951  
 Hansen, B. M. S. 2008, *ApJS*, 179, 484  
 Hillenbrand, L. A., Carpenter, J. M., Kim, J. S., et al. 2008, *ApJ*, 677, 630  
 Huber, K. F., Czesla, S., Wolter, U., & Schmitt, J. H. M. M. 2010, ArXiv e-prints  
 Hut, P. 1981, *Astron. & Astrophys.*, 99, 126  
 Ibgui, L. & Burrows, A. 2009, *ApJ*, 700, 1921  
 Iro, N., Bézard, B., & Guillot, T. 2005, *Astron. & Astrophys.*, 436, 719  
 Jackson, B., Greenberg, R., & Barnes, R. 2008, *ApJ*, 678, 1396  
 Jurić, M. & Tremaine, S. 2008, *ApJ*, 686, 603  
 Krivova, N. A. & Solanki, S. K. 2008, *Journal of Astrophysics and Astronomy*, 29, 151  
 Krivova, N. A., Solanki, S. K., & Floyd, L. 2006, *Astron. & Astrophys.*, 452, 631  
 Lanza, A. F., Pagano, I., Leto, G., et al. 2009, *Astron. & Astrophys.*, 493, 193  
 Leconte, J., Baraffe, I., Chabrier, G., Barman, T., & Levrard, B. 2009, *Astron. & Astrophys.*, 506, 385  
 Leconte, J., Chabrier, G., Baraffe, I., & Levrard, B. 2010, ArXiv e-prints  
 Lubow, S. H., Tout, C. A., & Livio, M. 1997, *ApJ*, 484, 866  
 Mamajek, E. E. & Hillenbrand, L. A. 2008, *ApJ*, 687, 1264  
 Miller, N., Fortney, J. J., & Jackson, B. 2009, *ApJ*, 702, 1413  
 Morel, P. & Lebreton, Y. 2008, *Ap&SS*, 316, 61  
 Ogilvie, G. I. & Lin, D. N. C. 2004, *ApJ*, 610, 477  
 Rowe, J. F., Matthews, J. M., Seager, S., et al. 2008, *ApJ*, 689, 1345  
 Saumon, D., Chabrier, G., & van Horn, H. M. 1995, *ApJS*, 99, 713  
 Showman, A. P. & Guillot, T. 2002, *Astron. & Astrophys.*, 385, 166  
 Silva-Valio, A., Lanza, A. F., Alonso, R., & Barge, P. 2010, *Astron. & Astrophys.*, 510, A25+  
 Snellen, I. A. G., de Mooij, E. J. W., & Burrows, A. 2010, *Astron. & Astrophys.*, 513, A76+  
 Solanki, S. K. & Fligge, M. 2000, *Space Science Reviews*, 94, 127  
 Sozzetti, A., Torres, G., Charbonneau, D., et al. 2007, *ApJ*, 664, 1190  
 Tingley, B. & Sackett, P. D. 2005, *ApJ*, 627, 1011

## Appendix

We present the time-averaged equations for the dynamical evolution of the star-planet system used in this work. These were taken from Barker & Ogilvie (2009) and applied to the case of a planar system (i.e. neglecting possible inclinations of the star and planet), accounting for external forcing of the semi-major axis, eccentricity, and the conservation of angular momentum during the planet's contraction.

Given a semi-major axis  $a$  and an eccentricity  $e$ , the orbital mean motion is  $n = (G(m_1 + m_2)/a^3)^{1/2}$  and the angular momentum  $h = na^2(1 - e^2)^{1/2}$ . The equations of secular evolution of  $h$ ,  $e$ , the star's spin  $\Omega_1$  and planet's spin  $\Omega_2$  under the effect of tides are:

$$\begin{aligned} \frac{1}{h} \frac{dh}{dt} &= -\frac{1}{t_{f1}} \left[ -\frac{\Omega_1}{2n} f_3(e^2) + \left( f_4(e^2) - \frac{\Omega_1}{2n} f_2(e^2) \right) \right] \\ &\quad -\frac{1}{t_{f2}} \left[ -\frac{\Omega_2}{2n} f_3(e^2) + \left( f_4(e^2) - \frac{\Omega_2}{2n} f_2(e^2) \right) \right] \\ &\quad -\frac{e}{1-e^2} \dot{e} + \frac{1}{2a} \dot{a}, \\ \frac{de}{dt} &= -\frac{1}{t_{f1}} \left[ 9 \left( f_1(e^2) - \frac{11}{18} \frac{\Omega_1}{n} f_2(e^2) \right) e \right] \end{aligned} \quad (10)$$

$$-\frac{1}{t_{f2}} \left[ 9 \left( f_1(e^2) - \frac{11}{18} \frac{\Omega_2}{n} f_2(e^2) \right) e \right] + \dot{e}, \quad (11) \quad +n^2 f_6(e^2)], \quad (23)$$

$$\frac{d\Omega_1}{dt} = \frac{\mu}{I_1 t_{f1}} \left[ -\frac{\Omega_1}{2n} (f_3(e^2) + f_2(e^2)) + f_4(e^2) \right] h + \dot{\Omega}_1, \quad (12) \quad H_2 = \mu \frac{h}{n t_{f2}} \left[ \frac{1}{2} \Omega_2^2 (f_3(e^2) + f_2(e^2)) - 2n \Omega_2 f_4(e^2) \right. \\ \left. + n^2 f_6(e^2) \right]. \quad (24)$$

$$\frac{d\Omega_2}{dt} = \frac{\mu}{I_2 t_{f2}} \left[ -\frac{\Omega_2}{2n} (f_3(e^2) + f_2(e^2)) + f_4(e^2) \right] h + \dot{\Omega}_2. \quad (13)$$

In these equations,  $\mu = m_1 m_2 / (m_1 + m_2)$  is the reduced mass of the system,  $I_{1,2}$  are the moments of inertia of the star and planet, and  $t_{f1,2}$  are the tidal friction timescales, defined as

$$\frac{1}{t_{f1}} = \left( \frac{9n}{2Q'_1} \right) \left( \frac{m_2}{m_1} \right) \left( \frac{R_1}{a} \right)^5, \quad (14)$$

$$\frac{1}{t_{f2}} = \left( \frac{9n}{2Q'_2} \right) \left( \frac{m_1}{m_2} \right) \left( \frac{R_2}{a} \right)^5, \quad (15)$$

where  $Q'_{1,2}$  are tidal dissipation efficiency parameters defined as  $Q'_{1,2} = 3 / (2k_{1,2} n \tau_{1,2})$ ,  $k_{1,2}$  being the second-order Love numbers for the star and planet, and  $\tau_{1,2}$  the assumed constant lag time between the quasi-hydrostatic figure and its equilibrium tide value (see [Barker & Ogilvie 2009](#); [Eggleton et al. 1998](#), for a discussion).

The quantities  $\dot{a}$ ,  $\dot{e}$ ,  $\dot{\Omega}_1$ , and  $\dot{\Omega}_2$  correspond to imposed rates of change per unit time of the semi-major axis, eccentricity, star spin, and planet spin, respectively. They are all set to mimic the presence of additional physical processes:  $\dot{a} \neq 0$  accounts for the migration imposed by a circumstellar disk on the planet,  $\dot{e} \neq 0$  mimics the mean eccentricity increase due to a Kozai effect, and  $\dot{\Omega}_1 \neq 0$  accounts for the evolution of the stellar spin due to magnetic braking. The rate of change of the planet spin  $\dot{\Omega}_2$  however, is self-consistently obtained from angular momentum conservation considerations that account for the planet's contraction rate  $\dot{R}_2$  obtained from the evolution calculations

$$\dot{\Omega}_2 = -2 \frac{\Omega_2}{R_2} \dot{R}_2. \quad (16)$$

This relation assumes that the planet rotates as a solid body, and that its moment of inertia remains constant.

Furthermore, Eqs (10-13) make use of the following functions of the eccentricity ([Barker & Ogilvie 2009](#); [Hut 1981](#)):

$$f_1(e^2) = \left( 1 + \frac{15}{4} e^2 + \frac{15}{8} e^4 + \frac{5}{64} e^6 \right) (1 - e^2)^{-13/2} \quad (17)$$

$$f_2(e^2) = \left( 1 + \frac{3}{2} e^2 + \frac{1}{8} e^4 \right) (1 - e^2)^{-5} \quad (18)$$

$$f_3(e^2) = \left( 1 + \frac{9}{2} e^2 + \frac{5}{8} e^4 \right) (1 - e^2)^{-5} \quad (19)$$

$$f_4(e^2) = \left( 1 + \frac{15}{2} e^2 + \frac{45}{8} e^4 + \frac{5}{16} e^6 \right) (1 - e^2)^{-13/2} \quad (20)$$

$$f_5(e^2) = \left( 3 + \frac{1}{2} e^2 \right) (1 - e^2)^{-5} \quad (21)$$

$$f_6(e^2) = \left( 1 + \frac{31}{2} e^2 + \frac{255}{8} e^4 + \frac{185}{16} e^6 + \frac{25}{64} e^8 \right) (1 - e^2)^{-8} \quad (22)$$

Last but not least, from energy conservation, one infers that the energy dissipated in the star and in the planet, respectively, are

$$H_1 = \mu \frac{h}{n t_{f1}} \left[ \frac{1}{2} \Omega_1^2 (f_3(e^2) + f_2(e^2)) - 2n \Omega_1 f_4(e^2) \right.$$