



Matching frictions, unemployment dynamics and the cost of business cycles

Jean-Olivier Hairault, François Langot, Sophie Osotimehin

► To cite this version:

Jean-Olivier Hairault, François Langot, Sophie Osotimehin. Matching frictions, unemployment dynamics and the cost of business cycles. *Review of Economic Dynamics*, 2010, 13 (4), pp.759-779. 10.1016/j.red.2010.05.001 . hal-00516832

HAL Id: hal-00516832

<https://hal.science/hal-00516832>

Submitted on 11 Sep 2010

HAL is a multi-disciplinary open access archive for the deposit and dissemination of scientific research documents, whether they are published or not. The documents may come from teaching and research institutions in France or abroad, or from public or private research centers.

L'archive ouverte pluridisciplinaire **HAL**, est destinée au dépôt et à la diffusion de documents scientifiques de niveau recherche, publiés ou non, émanant des établissements d'enseignement et de recherche français ou étrangers, des laboratoires publics ou privés.

Matching frictions, unemployment dynamics and the cost of business cycles

JEAN-OLIVIER HAIRAULT

Paris School of Economics (PSE) & Paris 1 University & IZA
joh@univ-paris1.fr

FRANÇOIS LANGOT

GAINS-TEPP (Le Mans University) & ERMES (Paris 2 University) & IZA
flangot@univ-lemans.fr

SOPHIE OSOTIMEHIN *

CREST-INSEE & Paris School of Economics (PSE) & Paris 1 University
sophie.osotimehin@ensae.fr

May 11, 2010

Abstract

We investigate the welfare cost of business cycles implied by matching frictions. First, using the reduced-form of the matching model, we show that job finding rate fluctuations generate intrinsically a non-linear effect on unemployment: positive shocks reduce unemployment less than negative shocks increase it. For the observed process of the job finding rate in the US economy, this intrinsic asymmetry increases average unemployment, which leads to substantial business cycles costs. Moreover, the structural matching model embeds other non-linearities, which alter the average job finding rate and consequently the welfare cost of business cycles. Our theory suggests to subsidizing employment in order to dampen the impact of the job finding rate fluctuations on welfare.

Keywords: Business cycle costs, unemployment dynamics, matching

JEL Codes: E32, J64

*We thank Paul Beaudry, Guy Laroque, Etienne Lehmann, Franck Portier and Christian Zimmermann and all participants at the following seminars and conferences for helpful comments: Crest (2008), PSE (2009), Boston College (2009), British Columbia (2009), Boston University (2009), UQAM (2009), Malaga (2009), ZEW (2009) and SED (2009). This paper is a revised version of the IZA Working Paper 3840. Any errors and omissions are ours.

1 Introduction

In a very famous and controversial article, Lucas (1987) argues that the costs of business cycles are negligible: using empirically plausible values for risk aversion, he shows that individuals would only sacrifice a mere 0.008% of their consumption to get rid of all aggregate variability in consumption. This result is completely at odds with the neoclassical synthesis and the Keynesian legacies, but also, to a lesser extent, with a recent literature that documents far larger costs of business cycles (Beaudry and Pages (1999), Krebs (2007), Storesletten et al. (2001), Barlevy (2004), De Santis (2007) and Krusell et al. (2009)).

Our objective in this paper is to show that the matching unemployment theory may also lead to sizable welfare costs of business cycles. Due to strong non-linearities, average employment and therefore average consumption are lowered by the mere process of alternate expansions and contractions: the losses during recessions outweigh the gains during economic booms. The welfare cost of unemployment fluctuations stemming from these non-linearities has been ignored despite the high interest in the recent literature with matching frictions for the cyclical volatility of unemployment (Shimer (2005) and Hall (2005*b*)) and for the design of the optimal monetary policy (Blanchard and Gali (2008), Faia (2009) and Sala et al. (2008)). By filling this gap, our paper adds a new dimension to the analysis of the matching model with aggregate uncertainty.

Following Cole and Rogerson (1999), our analysis is firstly based on the reduced form of the matching model where the job finding and separation rates are considered as exogenous stochastic processes. Focusing on the stock-flow unemployment dynamics allows us to emphasize that the core mechanism underlying our result does not depend on the structural matching considered. Moreover, it clearly unveils the very different implications of fluctuations in the job finding rate and the separation rate for the costs of business cycle. During booms, the increase in the job finding rate is partly offset by the decrease in unemployment. In recessions, the decrease in the job finding rate is amplified by the increase in unemployment. Because of this asymmetry, average unemployment is increased by fluctuations in the job finding rate. Conversely, fluctuations in the job separation rate lower the average unemployment rate¹. However, we show that the impact of the volatility in the separation rate on the business cycle cost is necessarily one order of magnitude lower than that of the volatility in the job finding rate for the same coefficient of variation. Although Fujita and Ramey (2008) have recently shown that the relative contribution of the separation rate to the unemployment volatility is higher than initially established by Shimer (2004), the impact of job separation fluctuations on the average unemployment rate, and then on the business cycle costs, is intrinsically limited. For the observed process of the job finding rate in the US economy, we show that the asymmetry quantitatively matters and generates sizable employment loss.

¹During booms, the decrease in the job separation rate is amplified by the increase in employment. In recessions, the increase in the job separation rate is compensated by the decrease in employment.

However, this reduced form approach suffers from several shortcomings. First, beyond the employment loss, one needs a better founded criterion in order to evaluate the business cycle cost. Secondly, the reduced form analysis supposes that business cycles do not have any effect on the average job finding rate: the counterfactual stabilized job finding rate is assumed to be equal to the average job finding rate. Finally, in the reduced form approach, stabilization policy cannot be explicitly addressed, as there is no operative way of getting rid of the cycles. A structural matching model is then necessary to take into account how the shocks hitting the fundamentals of the economy affect the job finding rate². However, since Shimer (2005), it is well known that the standard matching model fails to generate realistic fluctuations in the job finding rate. The studies aiming at elucidating the Shimer puzzle emphasize different mechanisms and none seems to close the debate³. Costain and Reiter (2008) have recently emphasized that no calibration permits the standard matching model to be consistent both with business cycle facts and with the effects of labor market policies. They show that sticky wages can improve the matching model's performance by making the firm's flow of surplus more pro-cyclical, but Pissarides (2007) emphasizes that the observed proportionality between wages in new matches and labor productivity is then not replicated. Despite these remaining quantitative shortcomings, we believe it is interesting to investigate the welfare implication of unemployment volatility in the matching model as it adds a normative dimension to solving the Shimer puzzle.

We choose to study the business cycle cost implied by a matching model with wage rigidity as suggested initially by Hall (2005*b*) in a first response to the puzzle. This framework fits perfectly well with our objectives: it allows us to replicate all the volatility in the job finding rate⁴, but also to reveal, in a very transparent way, the basic non-linearity embedded in the matching model. We show that the matching model naturally predicts that the job finding rate is a concave function of the vacancy-unemployment ratio. This could imply that fluctuations decrease the average job finding rate. But as the vacancy-unemployment ratio is a convex function of productivity, the impact of productivity fluctuations on the average job finding rate

²The Lucas' approach can be considered as sharper than ours because it is model-free. But it cannot address the stabilization issue.

³Hall (2005*b*) and Shimer (2005) initially proposed a rigid wage approach, which has been reconsidered more recently by Hall and Milgrom (2008). This hypothesis increases the sensitivity of the model to productivity shocks, but at the expense of the observed flexibility in wages (Pissarides (2007)). Hagedorn and Manovskii (2008) show that a higher parametrization for the utility of being unemployed and a lower bargaining power for workers enable the standard matching model to yield realistic fluctuations in the unemployment rate. Whereas Hornstein et al. (2007) introduce investment-specific technological shocks, Kennan (2006) emphasizes the role of procyclical informational rents: the gain that firms obtain by being more informed than workers increases in booms. The inclusion of turnover costs (Pissarides (2007), Mortensen and Nagypal (2003) and Silva and Toledo (2008)) and match-specific technological change (Costain and Reiter (2008)) have also been investigated.

⁴Note that we choose to replicate all the volatility in the job finding rate only with productivity shocks, even if it is now well-established that the volatility generated by these shocks only is lower (Pissarides (2007) and Mortensen and Nagypal (2003)).

is a priori ambiguous. These non-linearities come from the decreasing marginal returns in the matching function. The matching elasticity to vacancy plays a crucial role in the size of the business cycle costs: the lower the elasticity, the lower the average job finding rate and the higher the business cycle costs. The internal mechanisms of the matching model then lead to quite strong additional business cycle costs when the vacancy elasticity of the matching function is sufficiently low.

In order to show the robustness of our results, we propose two very different exercises. We firstly consider the flexible wage approach proposed by Hagedorn and Manovskii (2008). The employment loss is of the same magnitude as in the rigid-wage model, since the unemployment dynamics and the decreasing marginal returns are key features of any matching model. Secondly, using the panel data constructed by Bassanini and Duval (2006) over the period 1982-2003 for 20 OECD countries, we provide evidence that countries in which productivity is more volatile have also a higher level of unemployment.

All in all, the matching model with aggregate productivity shocks may challenge Lucas's controversial view on welfare costs of business cycles. For the US economy, these costs reach 0.55% of permanent consumption for a calibration we consider as empirically relevant. However, this result is obtained under several conditions which deserve to be emphasized. Firstly, it implies to consider an expanded definition of unemployment which induces a higher volatility along the cycle, but also a higher level of structural unemployment. Secondly, the employment loss must be costly enough in terms of consumption: it implies that the surplus from market production is high enough. Typically, the high level of home production implied by the calibration proposed by Hagedorn and Manovskii (2008) for solving the Shimer puzzle leads to less significant welfare costs than the rigid-wage approach.

Finally, we explicitly address the policy issue. Besides stabilizing the job finding rate, our theory suggests dampening the impact of the job finding rate fluctuations on welfare, by subsidizing employment in order to increase the average job finding rate. Note that such subsidies in our model, characterized by a suboptimal level of employment, permit to reach both the stabilization and the resource allocation objectives.

The literature following Lucas (1987) has mostly focused on the consequences of business cycles on the volatility of individual consumption. More precisely, because business cycles amplify individual income risks, they could generate higher welfare losses than Lucas's predictions when financial markets are incomplete. However, in as far as individual income fluctuations are transitory, the costs of the business cycle are still low, even negligible (Krusell and Smith (1999)), mainly because consumption can be smoothed through capital accumulation. On the other hand, when individual income variations are more persistent, the cost of business cycles becomes more substantial, at least 1% percent of the permanent consumption (Beaudry and Pages (1999), Krebs (2007), Storesletten et al. (2001), De Santis (2007), Krusell et al. (2009)). Reis (2009)

shows that the persistence also plays a key role when only aggregate shocks are considered. In the literature, very few papers focus on the consequences of business cycles for average consumption. This idea has been sketched out by De Long and Summers (1988); they argue that rather than steadying economic activity at its average level, stabilization would prevent output from deviating from its potential level. Ramey and Ramey (1993) explore this mechanism in a model where firms have to pre-commit to a specific technology before starting production. Stabilization may also increase welfare through its effect on capital accumulation (Matheron and Maury (2000), Epaulard and Pommeret (2003) and Barlevy (2004)). Finally, a very recent paper by Jung and Kuester (2008) emphasizes the non-linear relation between unemployment and the job finding rate. They, however, propose a quite complex matching model with capital accumulation, liquidity constraints and human capital, which prevents them from clearly evaluating the basic non-linearities embedded in the matching approach. Moreover, all these additional features bring very small business cycle costs. This shows a clear difference from our paper: we aim at unveiling in the basic matching model the mechanisms which lead to business cycle costs, namely the stock-flow unemployment dynamics and the congestion effects due to decreasing marginal returns in the matching function. Although the implied business cycle costs are weaker than in recent studies (Krebs (2007), Reis (2009) and Barlevy (2004) for instance), the effect of aggregate fluctuations on the employment level adds to the list of factors missing from Lucas's argument, and would indicate more substantial welfare costs from business cycles.

The paper is organized as follows. Section 2 uses a reduced form of the matching model to investigate the consequences of the non-linearity in the unemployment dynamics. Section 3 takes into account the non-linearity in the job finding rate dynamics embedded into the matching model. The fourth section is devoted to robustness tests. The last section concludes.

2 Asymmetry in the unemployment dynamics: a reduced form approach

Labor market frictions naturally generate asymmetries in the unemployment dynamics. Because of these asymmetries, aggregate fluctuations may have an impact on average unemployment. In this section, following Cole and Rogerson (1999), our theoretical framework is based on the reduced form of the matching model. The use of a reduced form model has the advantage of emphasizing that these asymmetries are present in any labor market matching model. We first present our theoretical framework, and then analyze the unemployment dynamics. Finally, a preliminary quantitative evaluation of the business cycle costs is proposed.

2.1 Framework

We consider unemployment dynamics as the result of exogenous job separation and job finding fluctuations. By shutting down any non linearities⁵ that may affect the job finding and separation rates, the reduced form model allows us to focus on the non linearity embedded in the unemployment dynamics.

Unemployment. The unemployment dynamics arise from the entries to and exits from employment. The former are determined by the job finding rate p , the latter by the separation rate s .

$$u_{t+1} = s_t(1 - u_t) + (1 - p_t)u_t \quad (1)$$

Shocks. The economy is hit only by aggregate shocks which generate some fluctuations in the job finding rate p_t and in the separation rate s_t . The job finding rate and separation rate are exogenous with respect to u . This key assumption derives from the matching theory. The aggregate shocks affect linearly both the job finding rate and the separation rate which are assumed to follow an AR(1) process⁶:

$$p_t = (1 - \rho_p)\bar{p} + \rho_p p_{t-1} + \varepsilon_t^p \quad (2)$$

$$s_t = (1 - \rho_s)\bar{s} + \rho_s s_{t-1} + \varepsilon_t^s \quad (3)$$

The shocks ε^p and ε^s have a zero-mean and a standard deviation equal to σ_{ε^p} and σ_{ε^s} respectively. \bar{p} and \bar{s} denote the average job finding rate and the average separation rate respectively.

Business cycle costs. Aggregate shocks may cause average unemployment to differ from the level it would have reached in an economy without any shocks. Following the convention in the literature, we refer to the latter as the stabilized economy. How the stabilized economy is reached is not explicitly presented. In particular, nothing is said in this section on the design and the efficiency of stabilization policies.

The cost of fluctuations is the cost of being in an economy hit by aggregate shocks, rather than being in an economy without aggregate shocks. In the former economy, the job finding rate and the separation rate fluctuate around their means, whereas in the latter they are set forever at their average value \bar{p} and \bar{s} . The stabilized unemployment (or the structural unemployment) is equal to:

$$\bar{u} = \frac{\bar{s}}{\bar{s} + \bar{p}}$$

⁵We will show in the structural approach (Section 3) that the average job finding rate can be increased or decreased by aggregate fluctuations. The job finding rate is a concave function of the vacancy-unemployment ratio, but, as the vacancy-unemployment ratio is a convex function of productivity, the effect of productivity fluctuations on the average job finding rate is a priori ambiguous. The reduced form case, in which fluctuations do not affect the average job finding rate, can then be considered as an instructive benchmark.

⁶We assume symmetrical shocks in order to identify the endogenous asymmetries generated by equation (1). We show in Appendix D that our results are not sensitive to this hypothesis.

The percentage of aggregate employment lost in the business cycle is then given by:

$$\lambda_u = \frac{1 - \bar{u}}{1 - \mathbb{E}(u)} - 1 = \frac{\mathbb{E}(u) - \bar{u}}{1 - \mathbb{E}(u)}$$

with $\mathbb{E}(u)$ the unconditional expectation of unemployment. Traditionally, since Lucas (1987), the business cycle cost is defined as the percentage of the consumption flow that agents would accept sacrificing in order to get rid of aggregate fluctuations. To what extent employment losses are transformed into welfare costs depends on the links between employment, income and consumption. This issue requires a more structural approach and we will show in Section 3 that the employment loss can be considered as a good approximation of the welfare costs in a matching economy. But it is already straightforward that the employment loss λ_u is of the same order of magnitude as the welfare cost in an economy populated by risk-neutral agents without savings.

2.2 The analysis of the non-linearities in the unemployment dynamics

By considering equation (1), it is fairly intuitive that shocks on the job finding rate and on the separation rate have non linear effects on unemployment. The impact of these shocks depends on the level of unemployment. During booms, the decline in unemployment offsets the increase in the job finding rate. The small search pool in booms implies that a higher job finding rate increases job creations less than it otherwise would. On the contrary, as unemployment is higher during a recession, the job finding rate shocks have a greater impact in recession; the decline in the job finding rate is magnified by the increase in unemployment. As a result, fluctuations in the job finding rate tend to increase average unemployment.

Conversely, as the impact of the job separation rate shocks depends on the level of employment, the fluctuations in the separation rate lead unemployment to decrease more in booms than to increase in recession: fluctuations in the job separation rate tend to reduce average unemployment.

In this section, we assess precisely these different effects. First, as it is traditionally done in the matching approach with aggregate shocks (see for instance Hall (2005)), a steady state analysis of equation (1) is conducted and so fluctuations in the conditional steady states are considered. This analysis delivers very easily the basics of the non-linearity embedded in the unemployment dynamics. This simple framework highlights the importance of the volatility of the job finding and separation rates for the size of business cycle costs, but also the less expected role played by the structural unemployment rate. Secondly, taking into account the inertia embedded in equation (1), we derive the full non-linear properties of the unemployment dynamics and show that the persistence of the aggregate shocks also matters.

2.2.1 Steady state analysis

Let us assume for now that the speed of convergence of unemployment is infinite: fluctuations cause unemployment to jump directly from one conditional steady state to another. A conditional steady state unemployment corresponds to the level \tilde{u}_i toward which the unemployment rate would converge if the separation and job finding rates forever keep the same value p_i and s_i , i.e. if the economy remains in the same state i . Let us define π_i the unconditional probability of being in state i . The value taken by p and s in each state i and the probability associated π_i define the Markov chains associated with p and s , consistently with equations (2) and (3). The average job finding rate \bar{p} is therefore equal to $\sum_i \pi_i p_i$ and the average separation rate \bar{s} to $\sum_i \pi_i s_i$. Jointly, they determine the structural unemployment rate \bar{u} . On the other hand, as unemployment is assumed to jump directly from one conditional steady state to another, the average unemployment in this economy is then equal to the average of the conditional steady states:

$$\tilde{u} = \sum_i \pi_i \tilde{u}_i$$

The non-linearity embodied in equation (1) implies that average unemployment \tilde{u} has no reason to coincide with structural (stabilized) unemployment \bar{u} .

Job finding rate shocks

To understand the specific role of the non linearity in job findings, let us assume first that the separation rate is constant and equal to its mean \bar{s} . This non-linearity implies that \tilde{u}_i is a convex function of the state-dependent job finding rate p_i :

$$\tilde{u}_i = \frac{\bar{s}}{\bar{s} + p_i} \quad (4)$$

Because unemployment is a convex function of the job finding rate, the average unemployment is higher than the structural (stabilized) unemployment \bar{u} . For uniformly small deviations, using a second order Taylor expansion of equation (4), this gap can be written as ⁷:

$$\tilde{u} - \bar{u} \approx \bar{u} (1 - \bar{u})^2 \left(\frac{\sigma_p}{\bar{p}} \right)^2 \quad (5)$$

A mean-preserving increase in the volatility widens the gap between the stabilized and fluctuating unemployment rates. The more volatile the economy, the greater the business cycle cost. Equation (5) indicates that the unemployment gap also depends on the structural unemployment rate \bar{u} . This result is important as it generates strong interactions between structural and cyclical unemployment. More particularly, a higher value of \bar{u} imply a more convex economy and leads to higher business cycle costs⁸. Furthermore, this suggests that labor market institutions

⁷See Appendix A for the derivation.

⁸This holds as long as $\bar{u} \leq 1/3$.

affect the costs of fluctuations as they have an impact on the average job finding and separation rates.

Job separation rate shocks

So far, the separation rate was assumed to be constant. However, it appears clearly from equation (1) that the asymmetry in the unemployment dynamics could also come from fluctuations in the separation rate. The resulting unemployment gap would then read:

$$\tilde{u} - \bar{u} \approx -\bar{u}^2(1 - \bar{u}) \left(\frac{\sigma_s}{\bar{s}} \right)^2 \quad (6)$$

with σ_s the unconditional standard deviation of the separation rate. Contrary to the job finding rate case, fluctuations in the separation rate tend to reduce average unemployment. Job separations decrease more in expansion than they increase in recessions. As shown by equation (6), the unemployment gap depends again on the average job finding and separation rates: a higher structural unemployment rate leads to more business cycle gains⁹. Further, the asymmetry embodied in equation (1) translates into average unemployment only if the separation rate is volatile enough.

2.2.2 Considering unemployment inertia

All previous calculations have been made with the assumption that unemployment jumps directly to the conditional steady states. Under this assumption, average unemployment in the business cycle economy is equal to the average of the steady states. Because of unemployment inertia, the asymmetry embodied in the conditional steady state does not necessarily manifest in average unemployment. This asymmetry affects the average unemployment rate only if the aggregate shocks are persistent enough.

To see in a synthetic formula the role of the mean, the volatility and the persistence of aggregate shocks, let us solve equation (1). Again, we first compute average unemployment in the case where only the job finding rate is fluctuating. As shown in Appendix B, the additional unemployment created by business cycles can then be approximated by ¹⁰:

$$\mathbb{E}[u] - \bar{u} \approx (1 - \bar{u})^2 \frac{\bar{s} \rho_p}{1 - \rho_p(1 - \bar{s} - \bar{p})} \left(\frac{\sigma_p}{\bar{p}} \right)^2 \quad (7)$$

If p_t was not serially correlated ($\rho_p = 0$), fluctuations in the job finding rate would not affect average unemployment: $\mathbb{E}[u] = \bar{u}$. When aggregate shocks are persistent, average unemployment

⁹This holds for $\bar{u} \leq 2/3$.

¹⁰The approximation consists of neglecting moments of order above 2. This is line with our approach : as we want to understand how symmetrical shocks can yield non symmetrical effects on unemployment, we disregard in particular the consequences of non-zero skewness

in the business cycle economy is no longer equal to stabilized unemployment. In line with our intuition, equation (7) also shows some interactions between the job finding rate volatility, its persistence and the structural unemployment rate. An increase in the variance of the shocks raises average unemployment all the more so when the average job finding rate is low and the persistence of the shocks is high.

Symmetrically, in the case where only the separation rate is fluctuating, the gain of fluctuations positively depends on the volatility and on the persistence of the separation rate:

$$\mathbb{E}[u] - \bar{u} \approx -\bar{u}^2 \frac{\bar{p} \rho_s}{1 - \rho_s(1 - \bar{s} - \bar{p})} \left(\frac{\sigma_s}{\bar{s}} \right)^2 \quad (8)$$

Again, the structural unemployment rate interacts with the volatility and the persistence of the shocks. However, as shown by equations (7) and (8), the employment gains are potentially smaller than the employment losses for the same coefficient of variation and the same level of autocorrelation, since the unemployment rate is one order of magnitude lower than the employment rate. Although Fujita and Ramey (2008) have recently established that the relative contribution of the separation rate to the unemployment volatility is higher than initially shown by Shimer (2004), the impact of job separation fluctuations on the average unemployment rate, and then on the business cycle costs, remains intrinsically limited¹¹. This is why we disregard job separation fluctuations in the sequel.

2.3 Quantifying the employment loss

To investigate whether the observed fluctuations in the job finding affect average unemployment and hence the costs of business cycles, it is necessary to estimate the AR(1) process¹² described by equation (2). As equation (7) gives only an approximation of average unemployment, we resort to simulations to obtain a more accurate estimate of the costs of business cycles. Consistently with the AR(1) estimation, we simulate job finding rate shocks in order to obtain artificial series. We then use them to simulate equation (1), which allows us to compute the average unemployment rate in the business cycle economy and the business cycle costs¹³.

¹¹The variance decomposition proposed by Fujita and Ramey is based on the linearization of steady state unemployment: $\sigma_u^2 \approx (1 - \bar{u})^2 \bar{u}^2 \left[\left(\frac{\sigma_p}{\bar{p}} \right)^2 + \left(\frac{\sigma_s}{\bar{s}} \right)^2 - 2\rho_{s,p} \frac{\sigma_s}{\bar{s}} \frac{\sigma_p}{\bar{p}} \right]$. If the separation rate and the job finding rate were characterized by the same coefficient of variation, the variance decomposition indicates that the separation rate would contribute to half of the volatility in the unemployment rate, whereas the impact of fluctuations in the separation rate on the average unemployment rate would be much weaker than that of the job finding rate. In Hairault et al. (2008), we checked that the business cycle gains implied by the observed volatility of the job separation rate is not significantly different from zero.

¹²It must be emphasized that considering a log-normal distribution for p would have led to very similar results. See Appendix D for more details.

¹³Note that we also need mean separation rate for simulating equation (1). It is estimated at 0.031 in Hall's case and at 0.035 in Shimer's case.

2.3.1 Data

The behavior of the job finding rate over the business cycle is still a debated subject. It especially depends on the underlying conception of “unemployment”. Contrary to Shimer (2005), Hall (2005*a*) uses a measure of unemployment expanded to include “discouraged workers” and “marginally attached workers”. Although those workers are classified as being out of the labor force, their behavior is close to that of workers classified as unemployed. Blanchard and Diamond (1990) advocate that the hazard rate for workers who are not in the labor force but “want a job” is similar to that of the unemployed workers. Their transition rate to employment is significantly higher than that of the other workers out of the labor force. For Canada, the transition rate to employment is 12.4% for marginally attached workers vs 3.5% for other non-participants and 23% for unemployed workers (Jones and Riddell, 2006). Although our benchmark result is based on Hall’s data, we also provide the results obtained when Shimer’s approach is used¹⁴, in order to emphasize the sensitivity of the employment loss to this choice.

The Hall (2005*a*) and Shimer (2005) measures of the job finding rate both exhibit pro-cyclicality. The job finding rate plunges at each recession and recovers at each expansion (Figures 2 and 3, Appendix C). Both measures show a downward trend in the 1970s and in the early 1980s. As some of these movements could be due to factors unrelated to business cycles, we focus hereafter on series detrended by a low frequency filter.

Table 1: Job finding rate statistics

	Hall data	Shimer data
Mean \bar{p}	0.285	0.607
Standard deviation σ_p	0.069	0.100
Coefficient of variation $\frac{\sigma_p}{\bar{p}}$	0.242	0.165
Autocorrelation	0.913	0.903

Note: Quarterly average of monthly data. Sample covers 1948q3-2004q3 for Hall (2005*a*) and 1951q1-2003q4 for Shimer (2005). Following Shimer (2005), both sets of data are detrended with a HP smoothing parameter of 10^5 .

We then estimate the parameters characterizing the process of the job finding rate as described by equation (2). As expected, the “expanded job finding rate” has a lower mean than Shimer (2005)’s measure (Table 1). More importantly, including low-intensity job seekers also implies a higher coefficient of variation.

¹⁴Note that for Shimer’s series, we use the job finding and separation rates and not the job finding and separation probabilities as the latter are not consistent with the stock flow equation for unemployment (equation (1)): Shimer (2005) takes into account the probability of finding another job within the month.

2.3.2 Simulation results

Table 2: Average unemployment and job finding rate fluctuations

	Hall data	Shimer data
Unemployment	10.22%	5.50%
Stabilized unemployment	9.83%	5.38%
Cost of fluctuations λ_u	0.44%	0.13%

Table 2 presents the employment loss due to business cycles in the US economy for the two measures of the job finding rate. Non-linearities in the unemployment dynamics are enough to generate sizable costs of business cycles. In particular, these costs are between one and two orders of magnitude greater than the costs found by Lucas (1987)¹⁵. The method chosen to measure the job finding rate has strong consequences on the costs of fluctuations. When some non-employed job seekers (Hall’s method) are taken into account, fluctuations in the job finding rate induce a 0.44% employment loss. Shimer’s measure leads to lower business cycle costs: if the job finding rate is computed using only transitions from unemployment, the cost of business cycles reduces to 0.13%. Such a result was expected, as Shimer’s job finding rate series display both a lower volatility and a higher mean (Table 1), two characteristics that we identified as cost-reducing.

3 Endogenizing the job finding rate: a structural approach

The previous section showed that the observed volatility and persistence in the job finding rate lead to sizable costs of business cycles. The structural matching model is a candidate for generating such costs. However, Shimer (2005) shows that the canonical matching model fails to generate realistic fluctuations in the job finding rate. The standard deviation of the job finding rate is much greater in the data than in the model (Shimer (2005)). An increase in labor productivity increases the expected profit from a filled job, and thus firms tend to open more vacancies. But there are internal forces in this framework which partially offset the initial increase in expected profits and then dampen the incentives for vacancy creations.

There already exist in the literature different approaches which solve the Shimer puzzle¹⁶. Do we care about identifying the mechanism at the origin of the high fluctuations in the job finding

¹⁵At this stage, we agree that the two approaches are not directly comparable. We will see in the next section that the employment loss is not so far from a cost expressed in terms of consumption.

¹⁶See for instance Hall (2005*b*), Hall and Milgrom (2008), Pissarides (2007), Hagedorn and Manovskii (2008), Hornstein et al. (2007), Kennan (2006), Mortensen and Nagypal (2003), Silva and Toledo (2008) and Costain and Reiter (2008).

rate? From the analysis conducted in the first part, it could be tempting to say that it is enough to know that at least one theory is able to replicate the job finding rate dynamics. Actually, we do care. Indeed, the results obtained in the first part are derived from a model in which the job finding rate is exogenous, and in which fluctuations are neutral regarding the average job finding rate. To assess the costs of fluctuations, one must take into account the consequences of stabilization on the average job finding rate. If productivity shocks and the job finding rate are linearly related, the results found in the previous section should *a priori* be close to the endogenous job finding rate case. But if not, the average job finding rate can then be affected by business cycles. Why do we suspect the presence of a non-linear effect of business cycles on the job finding rate? The job finding rate is a non-linear function of the labor market tightness which also depends non-linearly on productivity changes. To show and quantify these different effects, a structural model is then required and the costs of business cycles could differ according to the model specification. This last statement is all the more true as the cost of business cycles will rely on a welfare criterion consistent with the structural model. In particular, more attention must be paid to the cyclical behavior of vacancies.

The choice of the theoretical model is then potentially crucial. We choose to study the business cycle cost implied by a canonical matching model with wage rigidity (Hall (2005*b*)). As in the previous section, we leave aside the fluctuations in the separation rate so as to keep the analysis as tractable as possible¹⁷. This approach allows us to focus on the implications of the basic non-linearity introduced by the matching function. We then present different calibrations of the matching function elasticity in order to unveil these implications. Each replicates the job finding rate process (standard deviation and mean)¹⁸. The implied business cycle costs are not necessarily identical and equal to that obtained in the reduced-form part. In a robustness analysis, considering a flexible wage framework (Hagedorn and Manovskii (2008)), we show that these mechanisms are intrinsic to the matching model, and then not specific to the rigid wage approach.

3.1 A canonical matching model

The model considered hereafter is a version of the matching model *à la* Pissarides with aggregate uncertainty and exogenous separation.

¹⁷Moreover, it is well-known that job creation conditions are unaffected when job separations are endogenous (Pissarides (2007)).

¹⁸The persistence would be naturally matched by that of productivity shocks.

3.1.1 Matching technology

Output per unit of labor is denoted by y_t and is assumed to follow a first-order Markov process according to some distribution $G(y, y') = \Pr(y_{t+1} \leq y' | y_t = y)$. To hire workers, firms must open vacancies at unit cost κ . Jobs and workers meet pairwise at a Poisson rate $M(u, v)$, where $M(u, v)$ stands for the flows of matches and v the number of vacancies. This function is assumed to be strictly increasing and concave, exhibiting constant returns to scale, and satisfying $M(0, v) = M(u, 0) = 0$. Under these assumptions, unemployed workers find a job with a probability $p(\theta) = M(u, v)/u$ that depends on the ratio of vacancies to unemployment ($\theta = v/u$). The probability of filling a vacancy is given by $q(\theta) = M(u, v)/v$. Hereafter, we impose that the matching function is Cobb-Douglas: $M(u, v) = \varphi u^{1-\alpha} v^\alpha$ with $0 < \alpha < 1$.

The unemployment dynamics in the economy (equation (9)) are similar to equation (1), except that the job finding rate is now endogenous. Equations (10) and (11) define the job finding rate and the job filling rate respectively which depends¹⁹ on the current productivity state y :

$$u' = s(1 - u) + (1 - p(\theta_y))u \quad (9)$$

$$p(\theta_y) = \varphi \theta_y^\alpha \quad (10)$$

$$q(\theta_y) = \varphi \theta_y^{\alpha-1} \quad (11)$$

3.1.2 Workers

Workers are risk neutral. They have no access to financial markets. This simplifying assumption is not restrictive as our results do not rely on the impossibility of individuals smoothing their income. As agents are risk-neutral, the excessive volatility of consumption implied by this assumption is not captured in the welfare calculations. The focus is here on the impact of business cycles on average consumption, which is not affected by smoothing behaviors.

Workers can either be employed or unemployed. Employed workers receive wage w until their job is destroyed (at rate s); we do not take into account on-the-job search and voluntary quits. An unemployed worker gets an unemployment benefit²⁰ z which is equally financed by workers through lump-sum taxes. We choose to consider that the disutilities of working and of not working are both equal to the same value χ . It is then straightforward to derive the representative agent intertemporal preferences:

$$\mathbb{E}_0 \sum_{t=0}^{\infty} \beta^t (c_t - \chi)$$

¹⁹Throughout the paper the notation x_y indicates that a variable x is a function of the aggregate productivity level y and \mathbb{E}_y is the expected value conditional on the current state y .

²⁰At this stage, the non market value does not include home production. See the robustness analysis for a discussion of this assumption.

where \mathbb{E}_0 denotes the expectation operator conditional on information at time 0 and β the discount factor.

3.1.3 Aggregate consumption and the welfare cost of business cycles

In our economy, aggregate consumption is equal to the aggregate production net of the vacancy costs.

$$c_t = y_t(1 - u_t) - \kappa v_t \quad (12)$$

In this economy, the only sources of fluctuations are the labor productivity shocks. The welfare cost of fluctuations is therefore defined relatively to a counterfactual economy, in which labor productivity remains at its average value. The welfare cost of business cycles λ is defined as the percentage of the consumption flow that the agent would accept sacrificing in order to get rid of aggregate fluctuations:

$$\mathbb{E}_0 \sum_{t=0}^{\infty} \beta^t [(1 + \lambda)c_t] = \mathbb{E}_0 \sum_{t=0}^{\infty} \beta^t \bar{c}_t$$

where \bar{c}_t is the level of consumption in the economy without aggregate shocks. It needs to be derived from a counterfactual experiment based on an artificial economy without any shocks. The computation of welfare costs takes explicit account of the transition path to the stabilized economy. However, in order to highlight the welfare cost of business cycles in the matching economy, let us consider the following expression, which leaves aside the transition path²¹:

$$\lambda \approx \frac{\bar{c} - \mathbb{E}(c)}{\mathbb{E}(c)} = \frac{[(1 - \bar{u})\bar{y} - \kappa\bar{v}] - \mathbb{E}[(1 - u)y - \kappa v]}{\mathbb{E}(c)} \quad (13)$$

Business cycles are costly when they make the production net of the vacancy cost lower than its stabilized level. In order to make a link with the reduced form analysis, the welfare cost of business cycles can be written as follows:

$$\lambda \approx \frac{(\mathbb{E}(u) - \bar{u}) - \text{cov}(y, 1 - u) + \kappa(\mathbb{E}(v) - \bar{v})}{\mathbb{E}(c)} \quad (14)$$

The first part of the welfare cost of business cycles is the employment loss $(\mathbb{E}(u) - \bar{u})$ present in the reduced-form analysis. Let us emphasize that the size of the employment loss is not necessarily of the same magnitude in the structural model, as the job finding rate is now endogenous. The lower the average job finding rate, the higher the employment loss and the higher the welfare cost. The second part $\text{cov}(y, 1 - u)$ comes from the interaction between productivity and employment. Just as making the job finding rate negatively correlated with the stock of job searchers lowers mean employment, making productivity positively correlated with the stock of workers raises mean output. This explains why a positive covariance leads to decrease the business cycle costs. Finally, the third part shows that more vacancies in the fluctuating economy than in the stabilized one generate higher costs.

²¹The transition path does not significantly matter in our economy: it decreases the business cycle cost only very slightly.

3.1.4 The value functions

The worker's utility

Define U_y and W_y to be the state contingent present value of an unemployed worker and an employed worker²²:

$$U_y = z + \beta\{(1 - p(\theta_y))\mathbb{E}_y[U_{y'}] + p(\theta_y)\mathbb{E}_y[W_{y'}]\} \quad (15)$$

$$W_y = w_y + \beta\{(1 - s)\mathbb{E}_y[W_{y'}] + s\mathbb{E}_y[U_{y'}]\} \quad (16)$$

The firm's surplus

The firm's value of an unfilled vacancy V_y is given by:

$$V_y = -\kappa + \beta\{q(\theta_y)\mathbb{E}_y[J_{y'}] + (1 - q(\theta_y))\mathbb{E}_y[V_{y'}]\} \quad (17)$$

with J_y the state contingent present value of a filled job and $q(\theta_y)$ the probability of filling a vacancy conditionally on the productivity state y . When the job is filled, the firms operate with a constant return to scale technology with labor as only input. The firm's value of a job is given by:

$$J_y = y - w_y + \beta\{(1 - s)\mathbb{E}_y[J_{y'}] + s\mathbb{E}_y[V_{y'}]\} \quad (18)$$

Free entry implies $V_y = 0$ for all y . Therefore, the job creation condition is:

$$\kappa = \beta q(\theta_y)\mathbb{E}_y[J_{y'}] \quad (19)$$

3.1.5 Equilibrium

The labor market equilibrium depends on the way the wage is determined in the economy. Though our benchmark is the rigid wage model, we first present the traditional equilibrium with a Nash-bargained flexible wage. It allows us to compare the non-linearities embedded in these two equilibria.

Equilibrium with flexible wages.

When a worker and an employer meet, the expected surplus from trade is shared according to the Nash bargaining solution. The joint surplus S_y is defined by $S_y = W_y + J_y - U_y$. The worker gets a fraction γ of the surplus, with γ her bargaining power. The equilibrium with flexible

²²For the sake of simplicity, we omit from these equations the disutility of working and not working, the lump-sum tax financing the unemployment benefits and the dividend paid by firms to workers, as these variables are assumed to be identical across individuals.

wages is defined by the job creation condition and the wage rule (equations (20) and (21)), plus equations (9) to (11):

$$\frac{\kappa}{q(\theta_y)} = \beta \mathbb{E}_y \left[y' - w(\theta_{y'}) + (1-s) \frac{\kappa}{q(\theta_{y'})} \right] \quad (20)$$

$$w(\theta_y) = \gamma(y + \kappa\theta_y) + (1-\gamma)z \quad (21)$$

As Shimer (2005) points out, the adjustment of wages is responsible for the insensitivity of the labor market tightness to the productivity shocks. It also makes the interplay of the non-linearities in the model more complex relative to the rigid wage equilibrium, due to the retroaction of wages in the job creation condition (equation (20)).

Equilibrium with rigid wages

Incorporating wage rigidity in the matching model is a natural way to generate enough volatility. Moreover, this allows us to focus on the basic non-linearities introduced by the matching function, present in any matching model.

Following Hall (2005b), we consider a constant wage $w_y = w$, $\forall y$. This constant wage is an equilibrium solution if $z \leq w \leq \min \pi_y$, where π_y denotes the annuity value of the expected profit²³. The wage is set at the Nash bargaining solution relative to the average state of productivity \bar{y} . This wage is an equilibrium wage provided it lies in the bargaining set defined by the participation constraints of the firms and the workers.

The rigid wage equilibrium is then defined by substituting equations (20) and (21) by equations (22) and (23), again in addition to the conditions (9) to (11):

$$\frac{\kappa}{q(\theta_y)} = \beta \mathbb{E}_y \left[y' - \bar{w} + (1-s) \frac{\kappa}{q(\theta_{y'})} \right] \quad (22)$$

$$\bar{w} = \gamma(\bar{y} + \kappa\theta_{\bar{y}}) + (1-\gamma)z \quad (23)$$

3.2 Non-linearities, welfare cost and employment loss: the rigid wage case

When wages are rigid, the employment loss can be considered as a good approximation of the welfare cost. Indeed, as the production net of vacancy costs is approximately equal to labor earnings (for a discount factor β sufficiently close to 1)²⁴, it is straightforward to show that:

$$\lambda \approx \frac{\bar{w}(1-\bar{u}) - \mathbb{E}(\bar{w}(1-u))}{\mathbb{E}(\bar{w}(1-u))} = \frac{\mathbb{E}(u) - \bar{u}}{1 - \mathbb{E}(u)} \quad (\beta \rightarrow 1) \quad (24)$$

²³This annuity value is simply computed using the value an employer attaches to a new hired worker who never receives any wage:

$$\tilde{J}_y = y + \beta(1-s)\mathbb{E}_y[\tilde{J}_{y'}]$$

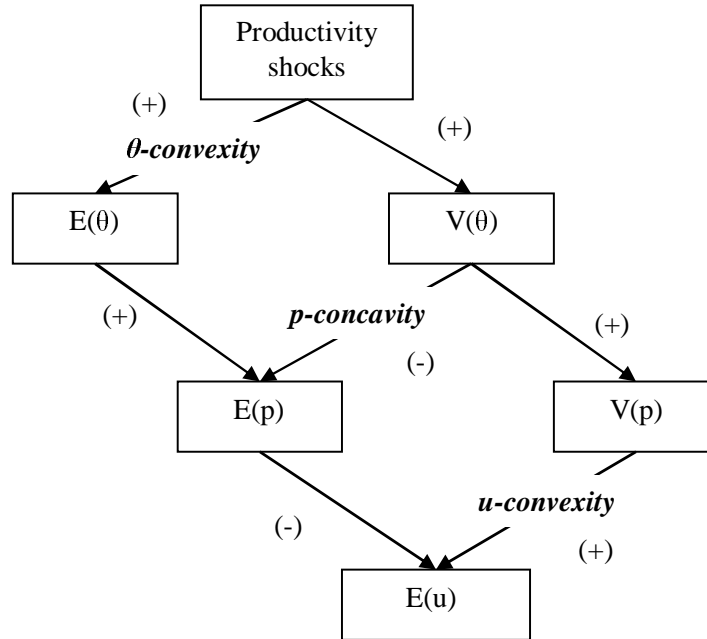
The annuity value is then given by $\pi_y = [1 - \beta(1-s)]\tilde{J}_y$.

²⁴In the general case, it is necessary to also take into account the dividends paid by the firms to the workers.

Comparing with equation (14), the cost-decreasing effect of the covariance between productivity and employment and the cost-increasing effect of higher vacancies compensate each other for a discount factor β sufficiently close to 1. More generally, the wage rigidity in the business cycles makes the welfare cost very close to the employment loss.

The total impact of productivity fluctuations on the average unemployment rate is then key to understand the business cycle costs. Figure 1 presents the mapping between labor productivity and unemployment. There is a first source of convexity arising from the unemployment dynamics (u-convexity effect), equation (9). It has been intensively investigated in the previous section. Let us concentrate here on the additional non-linearities that appear once p is endogenous. They determine altogether the average job finding rate and their global impact is not determined a priori.

Figure 1: Non-linearities in the structural matching model



As the return of an additional vacancy on the job finding rate is decreasing (equation (10)), the average job finding rate in the stabilized economy is potentially higher than in a economy with business cycles (p -concavity effect). The lower the elasticity α of the matching function to vacancies, the higher the p -concavity effect. Let us emphasize that this effect tends unambiguously to create higher welfare costs as the job finding rate is lowered by the volatility of the labor market tightness, and not by its level²⁵. Average unemployment increases without any gains in

²⁵In this latter case, a lower labor market tightness could be welfare-improving, if the deterministic equilibrium level of employment was above its optimal value (too many vacancy costs)

terms of vacancy reductions.

On the other hand, equation (22), combined with the job filling rate condition (equation (11)), implies that the average labor market tightness is increased by productivity fluctuations. As the matching function exhibits decreasing marginal returns to vacancies, the average duration of a vacancy and hence the cost of opening a vacancy are concave in the labor market tightness. Therefore, the free entry condition is satisfied for greater variations in job creation in booms than in recessions: the labor market tightness is a convex function of productivity (θ -convexity effect). This effect tends to increase the average job finding rate in the fluctuating economy. From equation (11), it can be seen that this convexity is amplified by a high elasticity α of the matching function to vacancies. *Ceteris paribus*, it leads to lower business cycle costs only in the case where the deterministic equilibrium level of employment is below its optimal value. This is the case in our economy, whatever the parameters we consider, as we impose relatively high unemployment benefits.²⁶

Overall, the way the productivity shocks affect the job finding rate on average depends on the degree of decreasing returns in the matching function captured by the elasticity α . To make this point explicit, let us approximate the unemployment rate using the comparative statics of the model without aggregate shocks²⁷:

$$u \approx \bar{u} - \frac{\bar{u}^2}{s} p'(\bar{\theta}) \theta'(\bar{y}) (y - \bar{y}) + \frac{\bar{u}^2}{s} \left(\frac{\bar{u}}{s} [p'(\bar{\theta}) \theta'(\bar{y})]^2 - \frac{1}{2} [p''(\bar{\theta}) (\theta'(\bar{y}))^2 + p'(\bar{\theta}) \theta''(\bar{y})] \right) (y - \bar{y})^2 \quad (25)$$

The employment loss can then be expressed as follows²⁸:

$$\mathbb{E}(u) - \bar{u} \approx \underbrace{\bar{u} (1 - \bar{u})^2 \left(\frac{\sigma_p}{\bar{p}} \right)^2}_{u\text{-convexity}} - \underbrace{\frac{\bar{u}}{s} \frac{1}{2} \left(\underbrace{p''(\bar{\theta}) (\theta'(\bar{y}))^2}_{p\text{-concavity}} + \underbrace{p'(\bar{\theta}) \theta''(\bar{y})}_{\theta\text{-convexity}} \right)}_{E(p) - \bar{p}} \sigma_y^2 \quad (26)$$

The first part of the welfare cost of business cycle captures the impact of the job finding rate volatility on average unemployment (u-convexity). The second part comes from the impact of the productivity volatility on the average job finding rate. It combines both the p -concavity and the θ -convexity and thus depends on the elasticity α of the matching function to vacancies. This can be shown more formally as follows²⁹:

$$p''(\theta) (\theta'(y))^2 + p'(\theta) \theta''(y) = \Gamma(\theta) (2\alpha - 1) \quad \Gamma(\theta) > 0$$

The stabilization of labor productivity either decreases or increases the average job finding rate, depending on the value of the elasticity of the matching function α . The job finding rate is

²⁶Note that this is a conservative choice with regard to the size of the business cycle costs.

²⁷The comparative static of the model without aggregate shocks can be used to approximate the dynamic stochastic model if the shocks are persistent enough. See Mortensen and Nagypal (2003) for more details.

²⁸As $p = \bar{p} + p'(\theta) \theta'(y) (y - \bar{y}) + \frac{1}{2} (p''(\bar{\theta}) (\theta'(\bar{y}))^2 + p'(\bar{\theta}) \theta''(\bar{y})) (y - \bar{y})^2$.

²⁹ $\Gamma(\theta) = \frac{\varphi \alpha}{(1 - \alpha)^2} \left(\frac{\beta}{\kappa(1 - \beta(1 - s))} \right)^2 \theta^{3\alpha - 2}$.

a concave (convex) function of labor productivity if α is below (above) $1/2$ and the stabilized job finding rate is then higher (lower) relatively to that of the volatile economy. In the case $\alpha = 1/2$, the θ -convexity and the p -concavity effects exactly compensate each other. In this case, the productivity fluctuations will lead to the same increase in average unemployment as in the reduced form analysis.

These basic non-linearities are not specific to the rigid wage model. It is obvious that the flexible wage equilibrium shares the same fundamental non-linearities, as they stem from the intrinsic characteristics of the unemployment dynamics, of the job finding rate and of the job filling rate which are exactly the same in the two equilibria. However, in the flexible wage case, the θ -convexity effect is modified by the retroaction of the wage in the job creation condition (equations (20) and (21)). Hence, the non-linearity between y and θ_y also depends on the assumption about the wage bargaining process, and more generally on the particular assumptions considered, such as the existence or not of fixed hiring and separation costs. In this sense, the flexible wage equilibrium may introduce non-linearities which are not intrinsic to the matching process. The use of the rigid wage framework allows us to focus on the basic non-linearities which are common to a large class of matching models.

3.3 Quantifying the business cycles costs

We first calibrate the rigid wage economy. As equations (24) and (26) give only an approximation of the welfare cost of business cycles, we resort to simulations to obtain an accurate estimate.

3.3.1 Calibration

The model is calibrated to match US data. We calibrate the productivity process to match the US labor productivity standard deviation and persistence³⁰. The monthly discount rate is set to 0.42%. The job separation rate is set at Hall's estimate for the US economy, 0.031. We choose the elasticity of the matching function α to be 0.5, in Petrongolo and Pissarides (2001) range, in order to start with a structural model as close as possible to the reduced form analysis. Following Shimer (2005), the unemployment benefits are set at 0.4. The scale of the matching function φ is chosen to pin down the US average vacancy-unemployment ratio. The workers' bargaining power γ and vacancy costs κ are then calibrated to reproduce the volatility and the mean of the job finding rate over the cycle³¹. These two targets are computed using Hall

³⁰We use the same data as Shimer (2005), the real output per worker in the non farm business sector, detrended with a HP smoothing parameter of 10^5 .

³¹As the model assumes a constant separation rate, we do not aim at replicating all the unemployment volatility. Otherwise, we would overestimate the business cycle costs by imposing too much volatility in the job finding rate in order to replicate all the unemployment volatility.

(2005a)’s measure of the job finding rate³² (Table 1).

Table 3: Benchmark calibration of the matching model

Parameter	Calibration	Target
Labour productivity		
Average	1	Normalization
Persistence ρ_y	0.90	US data (1951-2003)
Standard deviation σ_y	0.9%	US data (1951-2003)
Discount rate r	0.0042	Corresponds to 5% annually
Job destruction rate	0.031	Hall (2005)
Elasticity of the matching function α	0.5	Petrongolo-Pissarides (2001)
Unemployment benefits z	0.4	Shimer (2005)
Scale of the matching function φ	0.346	Matches US average v-u ratio of 0.72 (Pissarides, 2007)
Cost of vacancy κ	0.240	Matches US average job finding rate of 0.285 and job
Workers’ bargaining power γ	0.760	finding rate volatility of 0.068

3.4 Simulation

Table 4: The welfare cost of fluctuations in a matching model with rigid wages

	Business cycles economy				Stabilized economy			Cost of fluctuations
	$E(u_t)$	$E(p_t)$	σ_p	$E(\theta)$	\bar{u}	\bar{p}	$\bar{\theta}$	
$\alpha = 0.5$	10.22%	0.285	0.069	0.72	9.82%	0.285	0.681	0.44%
$\alpha = 0.4$	10.22%	0.285	0.069	0.72	9.75%	0.288	0.678	0.55%
$\alpha = 0.6$	10.22%	0.285	0.069	0.72	9.89%	0.283	0.685	0.32%

Table 4, Line 1, presents the results for the benchmark calibration of the rigid wage model. These results show that the average unemployment rate is higher in the fluctuating economy. This is also the case for the average labor market tightness, and so for the average vacancies as well. As expected, there is no influence of productivity fluctuations on the average job finding rate as $\alpha = 0.5$, and the welfare cost of business cycles is of the same magnitude as in the reduced form analysis³³. The size of the business cycle cost is only determined by the u-convexity effect.

³²As noted before, Hall [2005] uses a measure of unemployment expanded to include “discouraged workers” and “marginally attached workers”. As workers are considered to be homogenous in our model, we then assume that “discouraged workers” generate the same surplus from working as the workers who are officially unemployed, which is debatable. If the surplus was lower, the business cycle costs would also be lower.

³³Note that the cost-decreasing effect of the covariance between productivity and employment, offset by the cost-increasing effect of higher vacancies, generates a small change in the business cycle costs relative to the employment loss (less than 0.06 of a percentage point compared to 0.44).

We then simulate two other cases: $\alpha = 0.4$ and $\alpha = 0.6$ (last two lines of Table 4). The values of the parameters κ, γ and φ have been changed accordingly in order to still match the job finding rate characteristics³⁴. Depending on α , the US welfare cost of fluctuations could reach 0.55% or reduce to 0.32%. Petrongolo and Pissarides (2001) estimate this elasticity to be between 0.3 and 0.5. This suggests that with $\alpha = 0.5$, our benchmark calibration gives a lower bound of the welfare costs of fluctuations. In the more realistic case ($\alpha = 0.4$), the average job finding rate in the fluctuating economy is lower than the value which would be reached in the stabilized economy. A lower elasticity strengthens the p-concavity effect and dampens the θ -convexity effect. In this case, the internal mechanism of the matching model leads to quite high business cycle costs, since these costs are increased by one fourth. Note that it occurs only when the labor market tightness θ (and so the job finding rate $p(\theta)$) is volatile enough to make the non-linearity operate. Replicating the volatility of both the labor market tightness and the job finding rate leads to sizable business cycle costs through different channels which are all at work in this structural model.

We believe that these results are quite general and do not depend on the rigid wage framework we consider here³⁵. Firstly, the business cycle costs are mainly generated by the u -convexity, which is a key feature of any matching model. Secondly, the non-linearity of the job finding rate due to the matching function is not specific to the rigid wage economy. The flexible wage case actually adds other sources of non-linearity which depend on the specification of the matching model considered. The next section explicitly addresses this robustness issue.

4 Robustness

In this section, we evaluate the robustness of our results by undertaking two very different strategies. Firstly, we consider the alternative view to the rigid-wage approach proposed by Hagedorn and Manovskii (2008). Secondly, we propose to test the presence of a convex relationship between productivity shocks and unemployment through a cross-country panel analysis.

4.1 A flexible-wage approach

Hagedorn and Manovskii (2008) have recently proposed an alternative response to the Shimer puzzle by suggesting that the problem is more in the way the model is calibrated than in the

³⁴Note that, in the $\alpha = 0.4$ case, the rigid wage defined at the median productivity is no longer in the bargaining set. The wage is then fixed at its highest value ensuring that the firm's value is still positive ($w = \arg\min_y \pi_y$).

³⁵Our result suggests another interpretation to the cost of the wage rigidity given by Shimer (2004). This cost is of the same order of magnitude as our measure. He interprets this cost as the result of the non-optimality of the labor market tightness volatility. Our result rather suggests that it comes from the employment loss generated by the volatility of the job finding rate. Note that Shimer (2004) indeed emphasizes that the average output in the rigid wage economy is 0.12 percent below the level in the flexible wage one.

model itself. The matching framework with flexible wages can generate a realistic volatility in the job finding rate when the value of unemployment and of the workers' bargaining power are judiciously calibrated. Considering this alternative view enables us to qualify our results.

In this flexible wage framework, the welfare cost of business cycles may differ from the results derived under rigid wages for several reasons. Firstly, the non linearity in the job finding rate is modified due to the retroaction of wages in the job creation condition. Appendix E indeed shows that the condition which ensures that the job finding rate is lowered by business cycles is less stringent in this flexible wage environment. For the same value of α , the flexible wage framework potentially leads to higher business cycle costs. Secondly, the employment loss is no longer necessarily a good approximation of the welfare cost of business cycles. The covariance between productivity and employment and the behavior of vacancies over the cycle matter for the size of the market production loss (equation (14)). Further, the calibration of Hagedorn and Manovskii (2008) adds another difference: they show that the volatility of the job finding rate is high enough only if the value of the non-market activity z is calibrated sufficiently close to the average productivity. This implies calibrating z at a much higher value than its strict interpretation as an unemployment benefit would imply. Following Hagedorn and Manovskii (2008), we consider that z now includes home production l . It leads to a redefinition of aggregate consumption as follows: $c = y(1 - u) + ul - \kappa v$. It implies that the business cycle welfare cost is different from the market production loss defined in equation (14) and is then sensitive to the value of l :

$$\lambda_l \approx \frac{(\mathbb{E}(u) - \bar{u})(1 - l) - cov(y, 1 - u) + \kappa(\mathbb{E}(v) - \bar{v})}{\mathbb{E}(c)} \quad (27)$$

Let us emphasize that, for a given level of z , the value of l matters only for the magnitude of the welfare costs and has no effect on average employment and vacancy rates.

In order to check the robustness of our results, we now calibrate the flexible wage equilibrium, defined by the equations (9), (11) (20) and (21), along the lines of Hagedorn and Manovskii (2008). We consider the same values as in our benchmark economy for all parameters, except for the workers' bargaining power γ , the non-market value z and the vacancy cost κ which are calibrated in order to match the same targets as in the rigid wage case for internal consistency³⁶.

Table 5: Employment and market production loss with flexible wages

Business cycles economy				Stabilized economy			Employment	Market production
$E(u_t)$	$E(p_t)$	σ_p	$E(\theta)$	\bar{u}	\bar{p}	$\bar{\theta}$	loss	loss
10.22%	0.285	0.069	0.72	9.74%	0.288	0.697	0.52%	0.49%

Table 5 shows that the effects of the non-linearities present in the matching model appear to

³⁶Note that the targets are different in Hagedorn and Manovskii (2008). The values of κ , γ and z are respectively set at 0.21, 0.033 and 0.97.

be quite robust to variations in the degree of wage rigidity. The employment loss is even larger than in the rigid wage approach (0.52% against 0.44% in Table 4), as the stabilized job finding rate is now higher than its cyclical counterpart for α equal to 0.5. For the calibration considered in this flexible wage framework, the threshold for α under which the job finding rate is higher in the stabilized economy is 0.63 (vs. 0.5 in the rigid wage economy)³⁷. However, as wages are now flexible, this employment loss does not necessarily coincide with the market production loss. Actually, the last column in Table 5 shows that these two losses are very close. The interaction between productivity and employment is nearly compensated by the the vacancy gain. This result is not surprising: as the calibration is such that the bargained wage is close to the constant outside opportunity of the employed workers, this flexible wage model “is a close cousin of others that rationalize wage rigidity by dropping Nash wage bargaining” (Hall (2006), p.16).

However, the extent to which the employment (or the market production) loss can be interpreted as a welfare cost crucially depends on the home production value l . The standard calibration of the unemployment benefits for the US economy is between 0.3 and 0.6 (Kitao et al. (2008), Nickell et al. (2005) and Shimer (2005)). For the calibrated value of 0.97 for z , this implies that l is between 0.37 and 0.67, leading to a welfare cost equal to 0.30% and 0.14% respectively. Obviously, a high value of l automatically lowers the costs of business cycles. This question of the value of non-market activities is undoubtedly key for the welfare costs of business cycles.

Let us emphasize that our results on the employment loss are robust to considering flexible wages. We believe they would also be robust to other matching models solving the Shimer puzzle as the underlying mechanisms are intrinsic to this class of models³⁸. On the other hand, our results on the welfare costs are sensitive to the home production value, but this value remains so highly debated among the profession that we consider that this is more a matter of opinion than a matter of fact. Furthermore, when non-market returns are high, the response of unemployment to unemployment insurance is too large (Costain and Reiter (2008)). Hall and Milgrom (2008) also noted that the Hagedorn and Manovskii calibrations imply too high a labor supply elasticity, given empirical estimates.

Moreover, it must be emphasized that we have neglected other dimensions that could have increased our quantitative measure of the business cycle welfare costs. Once the non-market production is considered to be as efficient as the market production, the disutility of “not working” may dominate the disutility of working when job search costs, as well as indirect costs such as psychological damage and skill obsolescence, are taken into account. There are no clear empirical answers on this crucial point. On the other hand, unemployment benefits do not lead to distortive taxation in our theoretical framework. Business cycles, by increasing average

³⁷See Appendix E.

³⁸In Hairault et al. (2008), we show that this is true in the case of the fixed cost of recruiting recently introduced by Pissarides (2007).

unemployment, could imply higher taxes, which would, in turn, weigh employment down. This could have been counted as a cost of business cycles. Another dimension which could magnify these costs is the loss of human capital generated by unemployment spells and reflected in the permanent decrease in wages observed in data (Krebs (2007), Jung and Kuester (2008)). Is this compensated for by more intense human capital accumulation during expansions? All these points would deserve to be addressed to obtain a more general assessment of the welfare cost of unemployment fluctuations.

4.2 Unemployment and non-linearity: a test on panel data

The cost of business cycles induced by matching frictions relies crucially on the convexity between unemployment and total factor productivity. In this section, empirical estimates of this effect, based on cross-country data, are provided³⁹. Equation (25) can be used as a guideline to gauge whether more volatility is associated with substantially higher unemployment after controlling for other determinants of unemployment.

We use the panel data constructed by Bassanini and Duval (2006) over the period 1982-2003 for 20 OECD countries⁴⁰, which provide the unemployment rate (consistent with Shimer data), the cyclical component of the total factor productivity process (tfp) and time-varying labor market institutions (LMI) indicators for each country. The LMI aim at accounting for the structural level of unemployment. They include the average unemployment benefit replacement rate, the tax wedge, an indicator of employment protection legislation, an indicator of product market regulation, an indicator of high corporatism in the wage bargaining process and the union density⁴¹. In order to test whether the relation between the unemployment rate and the total factor productivity is convex, we augment the standard specification of Bassanini and Duval (2006) by introducing the square of the tfp:

$$u_{i,t} = \sum_l d_l X_{i,t}^l + a \text{tfp}_{i,t} + c (\text{tfp}_{i,t})^2 + \gamma_i + \lambda_t + \epsilon_{i,t} \quad (28)$$

where $X_{i,t}^l$ denotes the LMI l in country i at time t , λ_t the time fixed effect and γ_i is the country fixed effect. The results of this specification are shown in Column (1) and (2) of Table 6. We then include a possible interaction⁴² between tfp and time-invariant LMI, consistently with equation (25). Indeed, besides their direct effects on the structural unemployment, LMI may affect the impact of tfp on unemployment. Furthermore, as the non-linearity too may depend

³⁹We thank one referee for suggesting this empirical exercise.

⁴⁰Observations for Finland, Germany and Sweden in 1990 and 1991 are removed from the sample as in Bassanini and Duval (2006). We drop New Zealand and Portugal because there are a lot of missing values in the shock series for these two countries.

⁴¹See Appendix 2 in Bassanini and Duval (2006) for a detailed description of the variables.

⁴²We also allow the time fixed effect (λ_t) to depend on the country-specific LMI.

on the structural conditions of the labor market, we include in our estimation the interaction⁴³ between time-invariant LMI and the square of tfp. We then estimate the following equation:

$$u_{i,t} = \sum_l d_l X_{i,t}^l + a \text{tfp}_{i,t} \left(1 + \sum_l b_l (\bar{X}_i^l - \bar{X}^l) \right) + c (\text{tfp}_{i,t})^2 \left(1 + \sum_l e_l (\bar{X}_i^l - \bar{X}^l) \right) + \lambda_t \left(1 + \sum_l f_l (\bar{X}_i^l - \bar{X}^l) \right) + \gamma_i + \epsilon_{i,t} \quad (29)$$

The time-invariant LMI are measured by the difference between the average of the LMI variable l for country i , \bar{X}_i^l , and the average across country of \bar{X}_i^l , denoted by \bar{X}^l . The direct impact of tfp and the square of tfp are respectively measured by a and c , whereas the interaction terms are given by b_l and e_l . The last column of Table 6 presents the results of this specification.

We first estimate equation (28) without introducing the square of tfp. The results, shown in Column 1 of Table 6, document the role of institutions and tfp in explaining the heterogeneous dynamics of unemployment across countries. Unemployment decreases with tfp. It also depends positively on the average replacement rate, the tax wedge and product market regulation, and negatively on employment protection and on the degree of corporatism. The proportion of workers affiliated to a trade union (union density) is not significant. These estimates are consistent with the results of Bassanini and Duval (2006). Column 2 gives some first evidence on the mechanism we emphasized in previous sections: there is a convex relation between the unemployment rate and productivity. This implies that the volatility of productivity tends to raise average unemployment and thereby confirms that business cycles can induce an employment loss.

We test in Column 3 whether the non linearity between tfp and unemployment depends on the labor market institutions⁴⁴. The results indicate that unemployment benefits amplify the non-linear impact of the productivity volatility, whereas high corporatism tends to dampen this impact: LMI variables that increase average unemployment amplify the convexity that leads to higher business cycle costs.

All these results suggest that the volatility of productivity can induce an employment loss. Using these estimates, we can derive for each country the employment loss induced by the volatility of productivity. From equation (29), the direct employment loss can be computed as $c \sigma_{tfp}^2$. For the US, this estimate leads to an employment loss of 0.10 of a percentage point, consistent with the results we obtain in section 2.3.2 for the same definition of the unemployment rate,

⁴³From equation (25), the impact of LMI is ambiguous. However, focusing on the u -convexity shows that LMI that increase the structural unemployment rate also increase the effect of the convexity.

⁴⁴We cannot estimate the equation (29) with the full set of time-invariant institutions as explanatory variables, due to multi-collinearity problems. As shown in Bassanini and Duval (2006), multi-collinearity arises from the high (cross-country) correlation which exists between several of the policy indicators used as explanatory variables. We consider the same variables as in Bassanini and Duval (2006): the replacement rate and high corporatism.

Table 6: Estimation results

	(1)		(2)		(3)	
	Coef.	P-value	Coef.	P-value	Coef.	P-value
Direct impact of tfp (a and c)						
tfp	-8.26*	[0.08]	-6.14	[0.20]	-9.86**	[0.02]
(tfp) ²			317.19**	[0.03]	294.76**	[0.03]
Direct impact of the LMI(d_l)						
replacement rate	0.16***	[0.00]	0.16***	[0.00]	0.15***	[0.00]
tax wedge	0.36***	[0.00]	0.36***	[0.00]	0.34***	[0.00]
employment protection	-0.64	[0.17]	-0.65	[0.16]	0.13	[0.77]
union density	-0.01	[0.85]	-0.01	[0.84]	0.04	[0.24]
product market regulation	0.92***	[0.00]	0.95***	[0.00]	0.35	[0.10]
high corporatism	-1.48***	[0.00]	-1.52***	[0.00]	-1.46***	[0.00]
Interaction terms tfp-LMI (b_l)						
replacement rate					0.01	[0.68]
high corporatism					1.60	[0.18]
Interaction terms (tfp)²-LMI (e_l)						
replacement rate					0.09**	[0.05]
high corporatism					-3.59*	[0.08]
Interaction terms time fixed effect-LMI (f_l)						
replacement rate					0.06***	[0.00]
high corporatism					-1.45***	[0.00]
Country fixed effect	yes		yes		yes	
Time fixed effect	yes		yes		yes	
Observations	390		390		390	
R^2	0.90		0.90		0.98	

OLS estimations for (1) and (2) and non-linear least square estimation for (3) (with robust p-values).

* significant at 10%; ** significant at 5%; *** significant at 1%

i.e. for the Shimer data. This employment loss is estimated to be sizable for countries with a higher volatility of productivity such as Canada (0.20), Finland (0.24) or Ireland (0.32). On the other hand, the total impact of the volatility of productivity, taking into account the interaction of the productivity with the LMI, is given by $c \sigma_{tfp}^2 (1 + \sum_l e_l (\bar{X}_i^l - \bar{X}^l))$. The LMI amplify the impact of productivity fluctuations in countries where the structural unemployment rate is relatively high: for instance, in France, the total employment loss is estimated at 0.33 of a percentage point whereas the direct employment loss was equal to 0.08.

5 Structural policy as a stabilizer

The matching model displays sizable costs of business cycles. However, we agree that these costs cannot be interpreted as the gain of a stabilization policy since the productivity shocks have been exogenously shut off. It can be argued that the business cycle costs give an upper bound for the benefits of stabilization policies.

The next step could have been to address more explicitly the question of stabilization, especially that of the job finding rate p through fiscal or monetary policy, as the fluctuations in p are welfare-degrading. But studying the design of these macroeconomic policies is clearly beyond the scope of this paper. We rather exploit the fact that the structural and the cyclical dimensions are strongly interrelated in our framework. Section 2 has revealed that the costs of business cycles are sensitive to the mean of the job finding rate. The higher the latter, the lower the cost of fluctuations. Beyond the stabilization of the job finding rate volatility, our theory suggests dampening the impact of its fluctuations by increasing the mean of the job finding rate. However, any public intervention in this direction must take care not to introduce any additional distortions in the economy. Due to the existence of unemployment benefits and a high workers' bargaining power, the rigid wage economy is characterized by a suboptimal level of employment. We therefore consider a constant subsidy to firms financed by means of lump-sum taxes equally paid by employed and unemployed workers, allowing the economy to reach the first best allocation in an environment without shocks. This policy implies no trade-off between the stabilization and the resource allocation objectives. Let us note that this subsidy policy has the advantage of not being state-dependent and therefore does not suffer from a potential lack of information⁴⁵.

Leaving aside the welfare gain due to the reduction of the structural distortions, we focus on the additional gain implied by the reduction of the cost of fluctuations. We then consider the subsidized rigid wage economy⁴⁶ with and without productivity shocks for our benchmark calibration. Let us note that the mean of the job finding rate at the first best is equal to 0.672 (Table 7), much higher than its value in the economy without subsidies (Table 4). The business cycle costs implied by the productivity shocks are then considerably dampened by the

⁴⁵Alternatively, it is possible to think of counter-cyclical subsidies to firms. The government would provide subsidies τ_y to firms in order to fully compensate for productivity shocks. This would make the firm's value of a job independent of the business cycle. However, the implementation of this policy would require more information than is usually available on aggregate productivity shocks.

⁴⁶In the flexible wage framework, there is the same interaction between the structural and the cyclical dimensions. But the subsidy, which must take into account the existence of both the domestic production and the low bargaining power of the workers, would also have an effect on the volatility of the job finding rate. On the other hand, there would be still no conflict between the structural and cyclical objectives. Even in the case where a high level of home production would imply the economy to be without ambiguity in over-employment, decreasing the job finding rate would not inflict significant business cycle costs, given the high level of home production.

structural policy. Whereas the volatility of the job finding rate is not modified, the mean of the unemployment rate is no longer significantly increased by these fluctuations (Table 7). The structural policy reduces the costs of business cycles by one order of magnitude: these costs drop to 0.03%. This result illustrates the fact that reducing Harberger triangles may lead to dampening the welfare cost of Okun gaps. This is the natural policy implication of the existence of strong non-linearities in the matching model. Sizable business cycle costs do not necessarily imply the need for stabilization policies.

Table 7: The welfare cost of fluctuations with structural subsidies

Business cycles economy				Stabilized economy			Cost of fluctuations
$E(u_t)$	$E(p_t)$	σ_p	$E(\theta)$	\bar{u}	\bar{p}	$\bar{\theta}$	
4.46%	0.672	0.069	3.815	4.42%	0.672	3.771	0.03%

6 Conclusion

This paper shows that non-linearities in the unemployment dynamics caused by frictions on the labor market can generate sizable costs of fluctuations. Using a reduced-form model of the labor market, these costs are estimated to be between one and two orders of magnitude greater than those computed by Lucas (1987) and those usually obtained in dynamic stochastic general equilibrium models. We also show in the rigid wage version *à la* Hall (2005) that the internal mechanisms of the matching model matter for the magnitude of business cycle costs as they impact the average job finding rate through different non-linearities. Our results emphasize that the welfare cost of fluctuations does not only depend on the variability of aggregate shocks. The persistence of these shocks, but also the level of structural unemployment have important implications. Furthermore, a high structural unemployment rate magnifies the welfare consequences of the volatility and the persistence of macroeconomic shocks. We then show that an employment subsidy, by increasing the mean job finding rate, acts as a stabilization policy. We believe that our results are robust to other matching models solving the Shimer puzzle as the underlying mechanisms are intrinsic to this class of models. These results also suggest that business cycles may reduce average consumption by more in continental European countries which would then suffer from both higher structural unemployment and more costly unemployment fluctuations. Business cycle costs would not be alike across countries.

Overall, the welfare implications of aggregate fluctuations in the matching model question the optimism of Lucas (1987) about the weakness of business cycle costs. The welfare costs can be still considered as weak, but they are obtained in a canonical framework without taking into account the individual risks associated with aggregate unemployment, which has received more

attention in the literature since the seminal work of Krusell and Smith (1999). Unemployment fluctuations could then imply welfare costs through both a decrease in aggregate consumption and an increase in individual consumption volatility. There are no reasons to think that these two dimensions are not cumulative, leading to substantial business cycle costs. The verification of this assertion is left to further research.

Finally, our results give strong support to the recent line of research which takes into account labor market frictions in the design of optimal monetary policy (Blanchard and Gali (2008), Faia (2009) and Sala et al. (2008)). However, they also emphasize that leaving aside the non-linearities arising from the matching frictions leads to ignoring an important source of business cycle costs and then potentially to deriving misleading policy recommendations. From a methodological standpoint, our paper then questions first-order approximations to the equilibrium conditions which are extensively used to approximate welfare up to second order in the optimal policy literature⁴⁷.

⁴⁷See Schmitt-Grohé and Uribe (2007) and Faia (2009) for a similar point of view.

References

- Barlevy, G. (2004), ‘The cost of business cycles under endogenous growth’, *American Economic Review* **94**(4), 964–990.
- Bassanini, A. and R. Duval (2006), Employment patterns in oecd countries: Reassessing the role of policies and institutions. OECD Economics Department Working Papers 486.
- Beaudry, P and C. Pages (1999), ‘The cost of business cycles and the stabilization value of unemployment insurance’, *European Economic Review* **45**(8), 1545–1572.
- Blanchard, O. and J Gali (2008), Labor markets and monetary policy: a new-keynesian model with unemployment. NBER WP 13897.
- Cole, H. and R. Rogerson (1999), ‘Can the mortensen-pissarides matching model match the business-cycle facts’, *International Economic Review* **40**(4), 933–959.
- Costain, J. and M. Reiter (2008), ‘Business cycles, unemployment insurance, and the calibration of matching models’, *Journal of Economic Dynamics and Control* **32**, 1120–1155. forthcoming.
- De Long, B. and L. Summers (1988), ‘How does macroeconomic policy affect output?’, *Brookings Papers on Economic Activity* **2**, 433–480.
- De Santis, M. (2007), ‘Individual consumption risk and the welfare cost of business cycles’, *American Economic Review* **97**, 1488–1506.
- Epaulard, A. and A. Pommeret (2003), ‘Recursive utility, growth, and cost of volatility’, *Review of Economic Dynamics* **6**(2), 672–684.
- Faia, E. (2009), ‘Ramsey monetary policy with labour market frictions’, *Journal of Monetary Economics* **56**.
- Fujita, S. and G. Ramey (2008), ‘The cyclicalty of separation and job finding rates’, *International Economic Review* . forthcoming.
- Gali, J., M. Gertler and D. Lopez-Salido (2007), ‘Markups, gaps, and the welfare costs of business fluctuations’, *The Review of Economics and Statistics* **89**, 44–59.
- Hagedorn, M. and I. Manovskii (2008), ‘The cyclical behaviour of equilibrium unemployment and vacancies revisited’, *American Economic Review* **98**(4), 1692–1706.
- Hairault, J.O., F. Langot and S. Osotimehin (2008), Unemployment dynamics and the cost of business cycles. WP 3840, IZA.
- Hall, R. (2005a), ‘Employment efficiency and sticky wages: Evidence from folows in the labor market’, *Review of Economics and Statistics* **87**(3), 397–407.

- Hall, R. (2005*b*), ‘Employment fluctuations with equilibrium wage stickiness’, *American Economic Review* **95**(1), 50–65.
- Hall, R. (2006), Work-consumption preferences and employment volatility. Unpublished.
- Hall, R. and P. Milgrom (2008), ‘The limited influence of unemployment on the wage bargain’, *American Economic Review* **98**(4), 1653–1674.
- Hornstein, A., P. Krusell and G Violante (2007), Modelling capital in matching models: Implications for unemployment fluctuations. mimeo,.
- Jung, P. and K. Kuester (2008), The (un)importance of unemployment fluctuations for welfare. Federal Reserve Bank of Philadelphia Working Paper.
- Kennan, J. (2006), Private information, wage bargaining and employment fluctuations. NBER Working Papers.
- Kitao, S., L. Ljungqvist and T. Sargent (2008), A life cycle model of trans-atlantic employment experiences. NYU mimeo.
- Krebs, T. (2007), ‘Job displacement risk and the cost of business cycles’, *American Economic Review* **97**(3), 664–686.
- Krusell, P. and A. Smith (1999), ‘On the welfare effects of eliminating business cycles’, *Review of Economic Dynamics* **2**(1), 245–272.
- Krusell, P., T. Mukoyama, A. Sahin and A. Smith (2009), ‘Revisiting the welfare effects of eliminating business cycles’, *Review of Economic Dynamics* **12**, 393–402.
- Lucas, Robert (1987), *Models of Business Cycles*, Blackwell Publishing.
- Matheron, J. and T. Maury (2000), The welfare cost of fluctuations in ak growth models. mimeo, University of Paris.
- Mortensen, D. and E. Nagypal (2003), ‘More on unemployment and vacancy fluctuations’, *Review of Economic Dynamics* **6**1, 397–415.
- Nickell, S., L. Nunziata and W. Ochel (2005), ‘Unemployment in the oecd since the 1960s, what do we know’, *Economic Journal* **115**, 1–27.
- Petrongolo, B. and C. Pissarides (2001), ‘Looking into the black box: a survey of the matching function’, *Journal of Economic Literature* **39**, 716–741.
- Pissarides, C. (2007), The unemployment volatility puzzle: Is wage stickiness the answer? The Walras-Bowley lecture, North American Summer Meetings of the Econometric Society, Duke University.

- Ramey, G. and V. Ramey (1993), ‘Technology commitment and the cost of economic fluctuations’, *NBER Working Paper No. W3755* pp. 433–480.
- Reis, R. (2009), ‘The time-series properties of aggregate consumption: implications for the costs of fluctuations’, *Journal of European Economic Association* **7**.
- Sala, L., U. Soderstrom and A. Trigari (2008), ‘Monetary policy under uncertainty in an estimated model with labour market frictions’, *Journal of Monetary Economics* **55**, 983–1006.
- Schmitt-Grohé, S. and M. Uribe (2007), ‘Optimal, simple, and implementable monetary and fiscal rules’, *Journal of Monetary Economics* **54**, 1702–1725.
- Shimer, R. (2004), ‘The consequences of rigid wages in search models’, *Journal of the European Economic Association* **2**(2-3), 469–479.
- Shimer, R. (2005), ‘The cyclical behaviour of equilibrium unemployment and vacancies’, *American Economic Review* **95**(1), 25–49.
- Silva, J. and M. Toledo (2008), ‘Labour turnover costs and the behavior of vacancies and unemployment’, *Macroeconomic Dynamics* . forthcoming.
- Storesletten, K., C. Telmer and A. Yaron (2001), ‘The welfare cost of business cycles revisited: Finite lives and cyclical variation in idiosyncratic risk’, *European Economic Review* **45**, 1311–1339.

A The steady state unemployment gap

The conditional steady state can be written as a function of the job finding rate:

$$\tilde{u}_i = \tilde{u}(p_i)$$

Let $\nu_i = p_i - \bar{p}$, the conditional unemployment rate is therefore:

$$\tilde{u}_i = \tilde{u}(\bar{p} + \nu_i)$$

Because the unemployment rate is a convex function of the job finding rate, volatility in the job finding rate affects average unemployment. The unemployment gap ψ_p between an economy characterized by a stable job finding rate and an economy with a volatile job finding rate can be computed as follows:

$$\sum_i \pi_i \tilde{u}(\bar{p} + \nu_i) = \bar{u} + \psi_p$$

A second order approximation of the left hand side yields:

$$\sum_i \pi_i \left[\tilde{u}(\bar{p}) + \nu_i \tilde{u}'(\bar{p}) + \frac{\nu_i^2}{2} \tilde{u}''(\bar{p}) \right] \approx \bar{u} + \psi_p$$

Which gives:

$$\begin{aligned} \psi_p &\approx \frac{\sigma_p^2}{2} \tilde{u}''(\bar{p}) \\ \psi_p &\approx \sigma_p^2 \frac{\bar{s}}{(\bar{s} + \bar{p})^3} \end{aligned}$$

A similar calculation gives for the job separation rate:

$$\begin{aligned} \psi_s &\approx \frac{\sigma_s^2}{2} \tilde{u}''(\bar{s}) \\ \psi_s &\approx -\sigma_s^2 \frac{\bar{p}}{(\bar{s} + \bar{p})^3} \end{aligned}$$

B The unemployment gap: the general case

The unemployment dynamics read:

$$u_{t+1} = \bar{s} + (1 - \bar{s} - p_t)u_t \quad (30)$$

Define $\phi_t \equiv 1 - \bar{s} - p_t$ and $\mathbb{E}[\phi] \equiv \bar{\phi} = 1 - \bar{s} - \bar{p}$.

$$\phi_t = \rho_p \phi_{t-1} + (1 - \rho_p)\bar{\phi} - \varepsilon_t^p$$

Where ε_t^p is the innovation of the job finding rate process. It is iid, has mean zero and variance $\sigma_{\varepsilon_p}^2$.

The unemployment dynamics can be written:

$$u_{t+1} = \bar{s} + \phi_t u_t \quad (31)$$

A backward substitution gives:

$$\begin{aligned} u_{t+1} &= \bar{s} + \sum_{k=0}^{+\infty} \prod_{j=0}^k \phi_{t-j} \bar{s} \\ \mathbb{E}[u_{t+1}] &= \bar{s} \left(1 + \sum_{k=0}^{+\infty} \mathbb{E} \left[\prod_{j=0}^k \phi_{t-j} \right] \right) \end{aligned}$$

Write ϕ as an infinite moving average:

$$\phi_t = \bar{\phi} - \sum_{j=0}^{+\infty} \rho_p^j \varepsilon_{t-j}^p$$

The mean of unemployment can then be written:

$$\mathbb{E}[u] = \bar{s} \left(1 + \mathbb{E} \sum_{k=0}^{+\infty} [(\bar{\phi} - \sum_{j=0}^{+\infty} \rho_p^j \varepsilon_{t-j}^p) \dots (\bar{\phi} - \sum_{j=0}^{+\infty} \rho_p^j \varepsilon_{t-j-k}^p)] \right)$$

Neglecting moments of order above 2, the mean of unemployment can be approximated by:

$$\mathbb{E}[u] \approx \bar{s} \left(\frac{1}{\bar{s} + \bar{p}} + \frac{\sigma_{\varepsilon_p}^2}{1 - \rho_p^2} \sum_{k=2}^{+\infty} (1 - \bar{s} - \bar{p})^{k-2} \sum_{i=0}^{k-1} (k-1-i) \rho_p^{i+1} \right)$$

which simplifies to:

$$\mathbb{E}[u] \approx \bar{u} + \bar{s} \frac{\sigma_{\varepsilon_p}^2}{1 - \rho_p^2} \sum_{k=1}^{+\infty} \frac{\rho_p k (1 - \bar{s} - \bar{p})^{k-1}}{1 - \rho_p (1 - \bar{s} - \bar{p})}$$

This yields equation (7).

A similar calculation gives the consequences of job separation rate fluctuations on the average unemployment rate:

$$\mathbb{E}[u] - \bar{u} \approx -\frac{\sigma_{\varepsilon^s}^2}{1 - \rho_s^2} \left[\sum_{k=1}^{+\infty} (1 - \bar{s} - \bar{p})^{k-1} \sum_{i=0}^{k-1} \rho_s^{i+1} - \sum_{k=2}^{+\infty} \bar{s} (1 - \bar{s} - \bar{p})^{k-2} \sum_{i=0}^{k-1} (k-1-i) \rho_s^{i+1} \right]$$

which simplifies to:

$$\mathbb{E}[u] - \bar{u} \approx -\frac{\sigma_{\varepsilon^s}^2}{1 - \rho_s^2} \left[\frac{\rho_s}{1 - \rho_s} \left(\frac{1}{\bar{s} + \bar{p}} - \frac{\rho_s}{1 - \rho_s(1 - \bar{s} - \bar{p})} \right) - \frac{\rho_s}{1 - \rho_s(1 - \bar{s} - \bar{p})} \frac{\bar{s}}{(\bar{s} + \bar{p})^2} \right]$$

This yields equation (8).

C Job finding rate data

Figure 2: Job finding rate - Shimer data

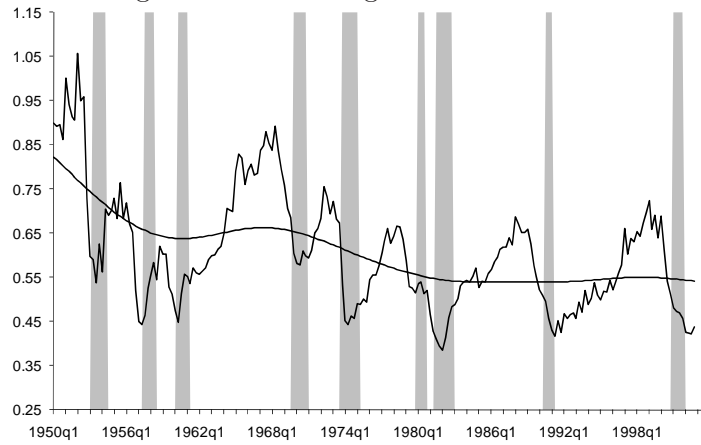
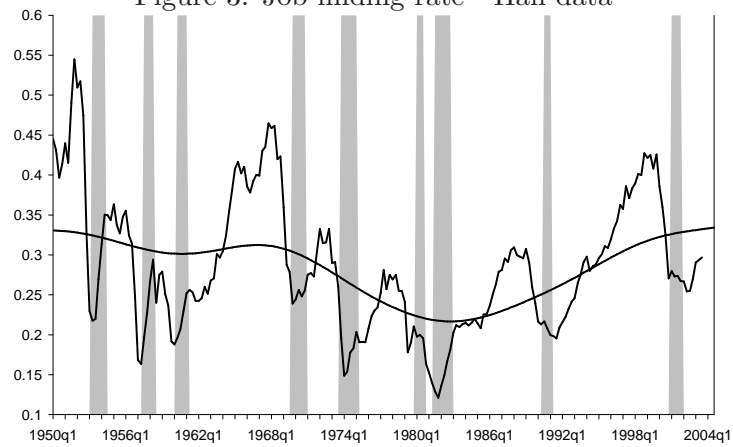


Figure 3: Job finding rate - Hall data



D Alternative specification: log-normal shocks

We estimate the following AR(1) process:

$$\ln(p_t) = a_{lp} + \rho_{lp}\ln(p_{t-1}) + \varepsilon_t^{lp} \quad (32)$$

$$(33)$$

Table 8 shows that the implied characteristics for the level of p is relatively close to those displayed in Table 1. Using the HP filter makes the choice of estimating in log or in level pointless.

Table 8: Job finding rate fluctuations under log-normality

	Hall data	Shimer data
Estimated process of $\ln(p)$		
Standard deviation of ε^{lp}	0.097	0.067
Autocorrelation ρ_{lp}	0.913	0.913
Implied dynamics of p		
Mean \bar{p}	0.285	0.607
Standard deviation σ_p	0.068	0.10
Autocorrelation	0.913	0.912
Business cycle cost	0.43%	0.13%

Note: Quarterly average of monthly data. Sample covers 1948q3-2004q3 for Hall (2005a) and 1951q1-2003q4 for Shimer (2005). Following Shimer (2005), both sets of data are detrended with an HP smoothing parameter of 10^5 .

E Non linearities in the endogenous job finding rate: the flexible wage case

In this Appendix, we show that the condition ensuring the concavity of the job finding rate is less stringent when wages are flexible than when wages are rigid. We use the comparative statics of the model without aggregate shocks to approximate the response of the job finding rate.

For a level y of productivity, the equilibrium vacancy-unemployment ratio θ is characterized by the following equation.

$$H(\theta, y) \equiv \frac{\kappa}{q(\theta)} - \Psi((1 - \gamma)(y - z) - \gamma\kappa\theta) = 0$$

where $\Psi \equiv \frac{\beta}{1 - \beta(1 - s)}$

Let us define

$$G(\alpha) \equiv \frac{\partial^2 p}{\partial y^2} = p''(\theta)(\theta'(y))^2 + p'(\theta)\theta''(y)$$

Using the function $H(\theta, y)$ to compute the implicit derivatives $\theta'(y)$ and $\theta''(y)$, we then obtain:

$$G(\alpha) = \frac{\alpha(1 - \alpha)\Psi^2(1 - \gamma)^2}{\Gamma(\theta)^2} \left[-\varphi\theta^{\alpha-2} + \frac{\alpha\kappa\theta^{-2}}{\Gamma(\theta)} \right]$$

where $\Gamma(\theta) = \kappa\varphi^{-1}(1 - \alpha)\theta^{-\alpha} + \Psi\gamma\kappa$

We deduce that the job finding rate is a concave function of productivity if:

$$G(\alpha) < 0 \Leftrightarrow 2\alpha - 1 - \Psi\varphi\gamma\theta^\alpha < 0$$

If $\alpha = 1/2$, then:

$$G(1/2) = -\Psi\varphi\gamma\theta^{1/2} < 0$$

The job finding rate is a strictly concave function of productivity when $\alpha = 1/2$ (i.e at the rigid wage threshold). Because $2\alpha - 1 < 0$ for $\alpha < 1/2$, this restriction is also satisfied for any $\alpha \in [0, 1/2]$. Then, we deduce that the concavity of the job finding rate is more probable in the case of flexible wages.