



**HAL**  
open science

# The second critical point for the Perfect Bose gas in quasi-one-dimensional traps

Mathieu Beau, Valentin A. Zagrebnov

► **To cite this version:**

Mathieu Beau, Valentin A. Zagrebnov. The second critical point for the Perfect Bose gas in quasi-one-dimensional traps. 2010. hal-00515958v1

**HAL Id: hal-00515958**

**<https://hal.science/hal-00515958v1>**

Preprint submitted on 8 Sep 2010 (v1), last revised 12 Sep 2010 (v2)

**HAL** is a multi-disciplinary open access archive for the deposit and dissemination of scientific research documents, whether they are published or not. The documents may come from teaching and research institutions in France or abroad, or from public or private research centers.

L'archive ouverte pluridisciplinaire **HAL**, est destinée au dépôt et à la diffusion de documents scientifiques de niveau recherche, publiés ou non, émanant des établissements d'enseignement et de recherche français ou étrangers, des laboratoires publics ou privés.

# The second critical point for the Perfect Bose gas in quasi-one-dimensional traps

Mathieu Beau and Valentin A. Zagrebnov

*Université de la Méditerranée and Centre de Physique Théorique - UMR 6207  
Luminy - Case 907, 13288 Marseille, Cedex 09, France*

(Dated: February 18, 2010)

We present a new model of quasi-one-dimensional trap with some unknown physical predictions about a second transition, including about a change in fractions of condensed coherence lengths due to the existence of a second critical temperature  $T_m < T_c$ . If this physical model is acceptable, we want to challenge experimental physicists in this regard.

PACS numbers: 05.30.Jp, 03.75.Hh, 67.40.-w

1. It is well known since 1925 [1] for an ideal gas of identical bosons of mass  $m$  in a three dimensional cubic box  $\Lambda = L^3$  described the grand canonical ensemble  $(V, T, \mu)$  with  $T$  the temperature and  $\mu$  the chemical potential, there exists a critical density of thermal gas saturation of  $\rho_c = \zeta(3/2)/\lambda_\beta^3$  where  $\lambda_\beta = \hbar\sqrt{2\pi\beta/m}$  is the thermal length and  $\beta = 1/k_B T$ . The hypothesis of A. Einstein back in 1938 [2] by F. London assumed that for a particle density  $\rho$  above the critical density  $\rho_c$  surplus the particles  $\rho - \rho_c$  starts in the ground state mode  $k = 0$ . Thus we note that  $\rho_{k=0} = \rho - \rho_c$  for  $\rho > \rho_c$ . But this argument macroscopic population of the ground state depends drastically on the geometry of the box. This is only first discovered H. Casimir [3] in 1968 for a certain geometry anisotropic and what has motivated the work of M. van den Berg, J. Lewis and J. Pule from 1981 [4] - [7]. These are generalized the concept of Bose-Einstein condensate defining density in thermodynamic limit for an ideal Bose gas in a rectangular box any  $\Lambda = L_x \times L_y \times L_z$ :

$$\rho_0 = \lim_{\eta \rightarrow 0} \lim_{L_x, L_y, L_z \rightarrow \infty} \sum_{\|k\| \leq \eta} \rho_k = \rho - \rho_c. \quad (1)$$

This definition includes all possibilities from a condensate, given here from [6] and revisited [8] in reference to new terminologies [9]:

(i) The condensate conventional or usual [8], [9] formed by the ground state (type I [6]).

(ii) The fragmented condensate [8], [9] if the generalized condensate is distributed over a set (finite / infinite) modes macroscopically occupied in an energy band near the fundamental mode ie  $N_0 = \sum_{k \leq k_c} N_k$ , with  $N_k = O(N)$  (Type I / II [6]).

(iii) The quasi-condensate [8], [9] if the condensate is distributed over a generalized set of modes occupied mesoscopic in an energy band near the fundamental mode ie  $N_0 = \sum_{k \leq k_c} N_k$ , with  $N_k = O(N^\delta)$ ,  $\delta < 1$  (type III [6]).

In 1983 [5], van den Berg proposed a box model three-dimensional anisotropic exponentially in both directions to define a second critical density  $\rho_m$  separating a regime of condensate generalized type III (for  $\rho_c < \rho < \rho_m$ ) towards a regime of generalized type I condensate (for  $\rho > \rho_m$ ). Lately, we have reexamined this model

[10] questions that we call two-dimensional and we have shown that this a transition between two regimes: quasi-condensate and coexistence between a regime of conventional condensate and quasi-condensate, notably by showing that the second critical density  $\rho_m$  corresponds to a saturation density of gas near condensation similarly to the saturation of thermal gas for  $\rho_c$ . In addition we have calculated the second critical temperature and determined the fractions similar condensed changed. Then we calculated the effects of this transition on the coherence length for these two regimes of condensate generalized.

However this transition in the model boxes van den Berg is not the case for almost one-dimensional (quasi-1D). Our finding presented here is the existence of this transition between two regimes for the ideal gas of bosons in a harmonic trap quasi-1D. The purpose of our letter is to show where is the transition between a quasi-BEC and BEC conventional find the geometric model for the trap to his observation and to characterize this transition (Fractions condensed, coherence lengths). This theoretical prediction is interesting because we have seen in the experimental [11] and theoretical articles [12], [13] the existence of a second critical temperature called  $T_\phi$  for quasi-1D environments, but calculated and explained differently from ours.

2. Consider an ideal gas of bosons in a harmonic trap characterized by three-dimensional pulsation  $\omega_x, \omega_y, \omega_z$  : where external potential is given by:

$$V_{ext}(r) = \frac{1}{2}m\omega_x^2 x^2 + \frac{1}{2}m\omega_y^2 y^2 + \frac{1}{2}m\omega_z^2 z^2. \quad (2)$$

The Hamiltonian for a particle is given by [14]:

$$T_\Lambda^{(N=1)} = -\frac{\hbar^2}{2m}\Delta + V_{ext}(r). \quad (3)$$

The energy levels are then given by:

$$\epsilon_{s_x s_y s_z} = \hbar\omega_z(s_z + \frac{1}{2}) + \hbar\omega_y(s_y + \frac{1}{2}) + \hbar\omega_x(s_x + \frac{1}{2}). \quad (4)$$

Let  $\mu$  the chemical potential of this system in the grand canonical ensemble, its value must be strictly lower

than the ground state to ensure the convergence distribution the Bose-Einstein statistics showing the number average boson in each of the modes of expression  $N_{s_x s_y s_z} = (\exp \beta(\epsilon_{s_x s_y s_z} - \mu) - 1)^{-1}$ . Thus we can define the effective chemical potential relative to ground level as  $\mu = \epsilon_{000} - \Delta\mu$ . When the potential  $\Delta\mu > 0$  tends to 0, the thermal gas is saturated and we obtain a critical number of particles when  $\omega_0 = (\omega_x \omega_y \omega_z)^{1/3}$  tends to 0:

$$\begin{aligned} N &\simeq \frac{1}{(\hbar\beta\omega_0)^3} \int_{\mathbb{R}^{3,+}} d^3\epsilon \frac{1}{e^{\beta(\epsilon+\Delta\mu)} - 1} \\ &< \frac{\zeta(3)}{(\hbar\beta\omega_0)^3} = N_c. \end{aligned} \quad (5)$$

The nature of the spectrum for this trap is different from that of a particle in a box, that is why the type of geometry for the second transition will be different. If we consider that this trap is anisotropic with a quasi-1D type "cigar" in the axis  $z$ , we must have the condition  $\omega_z \ll \omega_\perp$  with  $\omega_x = \omega_y = \omega_\perp$ . Usually [14], [12], [13] is taken as a model  $\omega_\perp = \lambda\omega_z$  with the condition  $\lambda \gg 1$ . Thus we have an anisotropy level of modes in each direction for  $\hbar\omega_z \ll \hbar\omega_\perp$ . If in this case we have an effective chemical potential  $\hbar\omega_z \ll \Delta\mu \ll \hbar\omega_\perp$  then we can calculate the number of atoms in a condensate generalized (quasi-condensate) in an energy band near the fundamental on the axis  $z$ :

$$\begin{aligned} N_{qbec} &\equiv \sum_{s=(0,0,s_z)} N_s \simeq \frac{1}{\hbar\beta\omega_z} \int_{\mathbb{R}^+} d\epsilon_z \frac{1}{e^{\beta(\epsilon_z+\Delta\mu)} - 1} \\ &\simeq -\frac{1}{\hbar\beta\omega_z} \ln[\beta\Delta\mu] = N - N_c. \end{aligned} \quad (6)$$

Thus for a macroscopic number of particles in the condensate, we must have condition  $\Delta\mu = \beta^{-1} e^{-\hbar\beta\omega_z(N-N_c)} + \dots$ . But there is another condition for completing the energetic part along the axis  $z$  because the chemical potential  $\Delta\mu$  determines the size of the energy band, decreases when the number of particles  $N$  increases and therefore a second critical number of particles noted  $N_m$ , the condition  $\hbar\omega_z \ll \Delta\mu$  is false. For this model unlike gas trapped in a box, there is no global notion of "density" of particles as the containment takes place throughout the three-dimensional space  $\mathbb{R}^3$ . However we can introduce a scaling for the number of particles  $n \equiv N\omega_0^3$  which converges when  $N$  tends to infinity and when  $\omega_0$  tends to 0 [14]. We then find that when  $\hbar\omega \simeq \Delta\mu$  is a  $\beta\hbar\omega_z \simeq e^{-\hbar\beta(n_m-n_c)/\omega_\perp^2}$ . To resolve this condition, we introduce the model of anisotropic quasi-1D trap following  $\omega_z = \omega_\perp e^{-\omega_c^2/\omega_\perp^2}$  where  $\omega_c > 0$  is a pulse of anisotropy exponentially. Thus there is a limit to the number of particles in the condensate distributed over the energy axis  $z$ :

$$N_m = N_c + \frac{\omega_c^2}{\hbar\beta\omega_0^3}. \quad (7)$$

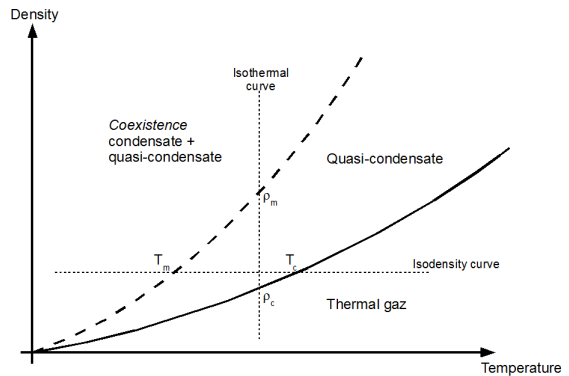


FIG. 1: Illustration of phase diagram, see (5), (7)

Now if we go beyond this critical number  $N_m$ , we shall complete the ground state:

$$N_{qbec} \equiv N_{s=0} = \frac{1}{e^{\beta\Delta\mu} - 1} \simeq \frac{1}{\beta\Delta\mu} = N - N_m, \quad (8)$$

and thus the chemical potential is  $\Delta\mu = 1/(\beta(N - N_m))$  and the value of the quasi-condensate is saturated:

$$N_{qbec} \simeq -\frac{1}{\hbar\beta\omega_z} \ln[\beta\Delta\mu] = N_m - N_c,$$

since  $N - N_c = (n - n_c)/\omega_0^3$  and thus  $\omega_0^3 N_{qbec} \simeq (\hbar\beta)^{-1} \omega_\perp^2 \ln[\omega_0^3/(n - n_c)] \simeq \omega_c^2 (\hbar\beta)^{-1}$

Note that this model of exponential anisotropy is necessary to limit "thermodynamics", ie when  $\omega_\perp$  tends to 0, to define the second critical number of particles  $N_m$  which is the same order as the first critical number  $N_c$  (proportional to  $\omega_0^{-3}$ ). For finite pulses in a given experimental situation, we must calculate the parameter  $\omega_c$  depending on the aspect ratio  $\lambda = e^{\omega_c^2/\omega_\perp^2}$  and see if the ratio  $\omega_c/\omega_\perp$  is sufficiently large to consider that one is in an exponential phase. Usually if one considers a system where very anisotropic  $\lambda \gg 1$  to consider this point of view that the system is exponentially anisotropic, we have to have  $\ln(\lambda) \gg 1$ .

3. In experiments with BEC, it is important to know the critical temperatures associated with corresponding critical densities. The *first* critical temperatures:  $T_c$ , for a given particles number  $N$  is given by solutions of this equation:  $N = N_c = \zeta(3)/(\hbar\beta\omega_0)^3$ . Then we get:

$$T_c = \frac{\hbar\omega_0}{k_B \zeta(3)^{1/3}} N^{1/3}. \quad (9)$$

By the expression for the *second* critical particles number one gets the following relation between the *first* and the *second* critical temperatures because  $T_m$  are given by solution of this equation  $N = N_m = N_c + \omega_c^2/(\hbar\beta\omega_0^3)$ :

$$T_m^3 + \tau^2 T_m = T_c^3. \quad (10)$$

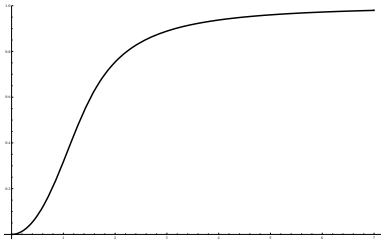


FIG. 2: Curve illustrating (11) as a function of  $\frac{\tau}{T_c}$ .

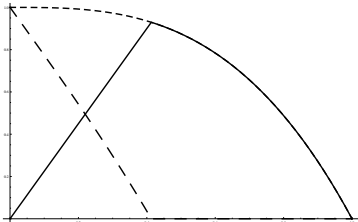


FIG. 3: Illustration of condensate fractions (13) (—), (14) (---), (15) (- - -) with  $\frac{T_c}{\tau} = \frac{2}{3}$

Here  $\tau = \omega_c \hbar / k_B \zeta(3)^{1/2}$  is "effective" temperatures related to the corresponding geometrical shape.

We can compute the relative difference between both critical temperature due to (10), see figure 2:

$$\frac{T_c - T_m}{T_c} = f\left(\frac{N\omega_c}{N}\right) \quad (11)$$

where  $N\omega_c = \frac{\omega_c^3 \zeta(3)^{1/2}}{\omega_0^3}$  defined by  $\frac{N\omega_c}{N} = \frac{\tau^3}{T_c^3}$  and with:

$$f(x) = 1 - \Omega(x)^{1/3} + \frac{x^{2/3}}{3} \Omega(x)^{-1/3} \quad (12)$$

where  $\Omega(x) = \frac{1}{2} \left(1 + \sqrt{1 + \frac{4}{27}x^2}\right)$ .

The temperature dependence of the "quasi-condensate"  $N_{Qbec}$  is, see figure 3:

$$\frac{N_{Qbec}}{N} = \begin{cases} 1 - \left(\frac{T}{T_c}\right)^3, & T_m \leq T \leq T_c, \\ \frac{\tau^2}{T_c^2} T, & T \leq T_m. \end{cases} \quad (13)$$

The corresponding ground state conventional BEC is, see figure 3:

$$\frac{N_{bec}}{N} = \begin{cases} 0, & T_m \leq T \leq T_c, \\ 1 - \left(\frac{T}{T_c}\right)^3 \left(1 + \frac{\tau^2}{T^2}\right), & T \leq T_m, \end{cases} \quad (14)$$

and for the two coexisting condensates one gets:

$$\frac{N - N_c}{N} = \frac{N_0}{N} = \frac{N_{Qbec} + N_{bec}}{N} = 1 - \left(\frac{T}{T_c}\right)^{3/2}. \quad (15)$$

4. Another physical observable to characterize this second critical temperature is the correlation function condensate coherence length. In quasi-1D harmonic trap, the correlation function is locally defined by:

$$g(r, r') = \sum_s \frac{\bar{\phi}_s(r) \phi_s(r')}{e^{\beta(\epsilon_s - \mu)} - 1}, \quad (16)$$

where the wave function  $\phi_s(r)$  are the well known three dimensional hermite functions:

$$\phi_s(r) = \phi_{s_x}(x) \phi_{s_y}(y) \phi_{s_z}(z),$$

with for  $\nu = x, y, z$  ( $r_x \equiv x, r_y \equiv y, r_z \equiv z$ ):

$$\phi_{s_\nu}(r_\nu) = c_{s_\nu} \frac{1}{\sqrt{L_\nu}} H_{s_\nu}(r_\nu/L_\nu) e^{-\frac{r_\nu^2}{2L_\nu^2}},$$

with  $c_{s_\nu} = 1/\sqrt{s_\nu! 2^{s_\nu} \sqrt{\pi}}$ ,  $\nu = x, y, z$  and where the effective confinement lengths  $L_\nu$ ,  $\nu = x, y, z$  are given by:  $L_\nu = \sqrt{\frac{\hbar}{m\omega_\nu}}$ . Notice that the limiting diagonal function  $n(r) \equiv \sigma(r, r)$  is local space particle density at point  $r$ .

To compute the correlations in the direction  $z$ , induced by the quasi-condensate, we have to consider  $r = \tilde{r} - \Delta r/2$ ,  $r' = \tilde{r} + \Delta r/2$ , where  $\Delta r/2 = (0, 0, \Delta z)$  and integrate  $\tilde{r}$  over the space to keep the effect of condensate through the trap, it give the mean value of correlation for the distance  $\Delta r$ :

$$\begin{aligned} \langle g \rangle(\Delta r) &= \int_{\mathbb{R}^3} d^3 \tilde{r} g(\tilde{r} - \Delta r/2, \tilde{r} + \Delta r/2). \\ &= \langle g_{Nbec} \rangle(\Delta r) + \langle g_{Qbec} \rangle(\Delta r) + \langle g_{bec} \rangle(\Delta r) \end{aligned} \quad (17)$$

where correlation function is divided in three parts, each part is the truncation of the sum (16): the non-condensate correlations  $\langle g_{Nbec} \rangle \equiv \sum_{s_x > 0, s_y > 0, s_z}$ , the quasi-condensate correlations  $\langle g_{Qbec} \rangle \equiv \sum_{s_x = 0, s_y = 0, s_z}$  and the condensate correlations  $\langle g_{bec} \rangle \equiv$  (correlation of the ground state). By formulas (16) and (17) and by mathematical assumptions [16], [17] for the non-condensate part, we get, see figure 4:

$$\begin{aligned} \langle g_{Nbec} \rangle(\Delta r) &\simeq \int_{\mathbb{R}^1} d\tilde{x} \int_{\mathbb{R}^1} d\tilde{y} \int_{\mathbb{R}^1} d\tilde{z} \sum_{j=1}^{\infty} \frac{e^{j\beta\mu}}{\sqrt{\pi j \hbar \omega_0 / 2}^3} \\ &\times e^{-jm\beta(\omega_x^2 \tilde{x}^2 + \omega_y^2 \tilde{y}^2 + \omega_z^2 \tilde{z}^2)} e^{-2m \frac{(\Delta r)^2}{j\beta \hbar^2}} \\ &= \sum_{j=1}^{\infty} e^{j\beta\mu} \frac{1}{j^3 \hbar^3 \omega_0^3} \exp[-2m \frac{(\Delta r)^2}{j\beta \hbar^2}], \end{aligned} \quad (18)$$

which decrease exponentially fast for  $\mu < 0$ . The quasi-condensate part, for  $T < T_c$ , by the scaling argument of localization of the scale of energetic momentum of quasi-condensate given by  $\Delta\mu$ , and by mathematical assump-

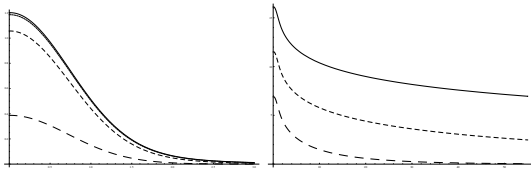


FIG. 4: (a) Allure of correlation functions (19) with  $\omega_0 = 1$ ,  $\beta\hbar^2/2m = 1$  and  $\beta\Delta\mu = 1, 0.1, 0.01, 0.001, 0.00001, 0.0000001$  respectively curves (- - -), (- - -), (...), and (—). Notice that (...) and (—) are combined, what can be interpreted as a saturation of the coherence of the thermal gas. (b) Allure of correlation functions (18) with  $\omega_0 = 1$ ,  $\beta\hbar^2/2m = 1$  for  $\beta\Delta\mu = 0.001, 0.0001, 0.000001$  respectively (- - -), (- - -), (—).

tions [16], [17], is given by, see figure 4:

$$\begin{aligned} \langle g_{Qbec} \rangle(\Delta r) &\simeq \int_{\mathbb{R}^1} d\tilde{z} \sum_{j=1}^{\infty} e^{j\beta\Delta\mu} \frac{1}{\sqrt{\pi j\hbar\omega_0/2}} \\ &\times \exp[-jm\beta(\omega_z^2 \tilde{z})^2 \beta\Delta\mu] \exp[-2m \frac{(\Delta r)^2 \beta\Delta\mu}{j\beta\hbar^2}], \\ &= \sum_{j=1}^{\infty} e^{j\beta\mu} \frac{1}{j\hbar\omega_z} \exp[-2m \frac{(\Delta z)^2 \Delta\mu}{j\beta\hbar^2}]. \end{aligned} \quad (19)$$

The condensate part, for  $T < T_m$  is given by:

$$\begin{aligned} \langle g_{bec} \rangle(\Delta r) &= \int_{\mathbb{R}^3} d\tilde{r} \phi_{000}(\Delta r) \phi_{000}(-\Delta r) N_{bec} \\ &= N_{bec} \exp\left(\frac{\Delta z^2}{L_z^2}\right) \simeq N_{bec}. \end{aligned} \quad (20)$$

We can defined the coherence length of the quasi-condensate as the maximal scale of length of  $\Delta z$  such that the correlations are non-negligible when  $\omega_z, \omega_{\perp}$  tends to zero. Then by a scaling argument, see equation (19) we obtain  $L_c = \sqrt{\hbar/m\omega_{\perp}\beta\Delta\mu}$ , where  $\Delta\mu$  is given by  $\beta^{-1}e^{\hbar\beta\omega_z(N-N_c)}$  for  $N_c < N < N_m$ . Thus  $L_c\sqrt{m\omega_{\perp}/\hbar} = (\omega_{\perp}/\omega_z)^{\gamma(T)}$ , where the exponent  $\gamma(T) = \hbar\beta\omega_0^3(N-N_c)/\omega_c^2$  for  $N_c < N < N_m$  and  $\gamma(T) = \hbar\beta\omega_0^3(N_m-N_c)/\omega_c^2$  for  $N > N_m$ . Using relations (9) and (10) between  $N, N_c, N_m$  and  $T, T_c, T_m$ , we can find the temperature dependence of the exponent:

$$\begin{aligned} \gamma(T) &= \left(\frac{T}{\tau}\right)^2 \left( \left(\frac{T_c}{T}\right)^3 - 1 \right), \quad T_m < T < T_c, \\ &= 1, \quad T \leq T_m. \end{aligned} \quad (21)$$

7. We propose an experimental investigation of a weakly interacting Bose gas in quasi-one-dimensional-harmonic-trap, with the opposite of Thomas-Fermi regime to verify experimentally the effect of geometry on the kinetic energy and on the coherence properties of the condensate between these two critical points. The next work will deal

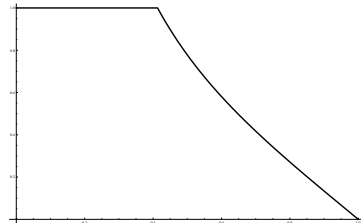


FIG. 5: curve illustrating the exponent (21) as a function of  $\frac{T}{T_c}$  and with  $\frac{T_c}{\tau} = \frac{2}{3}$ . This gives us a relative difference between the two critical densities of 0.587, see relation 11 and figure 2

with the implementation of the interactions between particles and its effect on the second critical temperature as it is done for the first critical temperature [15]. An other question for quasi-two-dimensional boxes is the validity of Hohenberg theorem [9] which forbidden the existence of the condensate on the ground state for homogeneous system.

We are thankful to Markus Holtzmann for useful discussions about the exponential anisotropy effect.

- 
- [1] A. Einstein, Quantentheorie des einatomigen idealen Gases. Zweite Ab-handlung, Sitzungsberichte der Preussischen Akademie der Wissenschaften (Berlin). Physikalisch-mathematische Klasse pp. 314 (1925).
  - [2] F.London, Phys. Rev. **54**, 947-954 (1938).
  - [3] H.B.G.Casimir, *On Bose-Einstein condensation*, in Fond.Probl.in Stat.Mech.v.III, 188-196, ed.E.G.D.Cohen (North-Holland Publ.Comp., Amsterdam, 1968).
  - [4] M. van den Berg, J.T.Lewis, On generalized condensation in the free boson gas, *Physica 110A*, 550-564 (1982).
  - [5] M. van den Berg, J.Stat. Phys. **31**, 623-637 (1983).
  - [6] M.van den Berg, J.T.Lewis and J.Pulé, *Helv.Phys.Acta* **59**, 1273-1288 (1986).
  - [7] M.van den Berg, J.T.Lewis and M.Lunn, *Helv.Phys.Acta* **59**, 1289-1310 (1986).
  - [8] M.Beau, *J.Phys.A* **42**, 235204 (2009).
  - [9] W.J.Mullin, M.Holzmann, and F.Laloë, *J.Low Temp.Phys.* **121**, 263 (2000). **74**, 063623 (2006).
  - [10] M.Beau, V.Zagrebnev, *Condensed Matter Journal* (2010).
  - [11] F. Gerbier, J. H. Thywissen, S. Richard, M. Hugbart, P. Bouyer, A. Aspect, *Phys. Rev. A* **67** 051602(R) (2003)
  - [12] D. S. Petrov, G. V. Shlyapnikov, and J. T. M. Walraven, *Phys. Rev.Lett.* **87**, 050404 (2001).
  - [13] D. S. Petrov, G. V. Shlyapnikov, and J. T. M. Walraven, *Phys. Rev.Lett.* **85**, 3745 (2000).
  - [14] F.Dalfovo et al., *Rev. Mod. Phys.* **71**, 463 (1999).
  - [15] M. Holzmann, J.-N. Fuchs, G. Baym, J.-P. Blaizot, F. Lalo, *Comptes Rendus Physique* **5**, 21 (2004)
  - [16] M.Abramowitz, I.A.Stegun, eds (1972), *Handbook of Mathematical functions with formulas, graphs and mathematical tables*, New York: Dover Publications.
  - [17] M.Beau, Thesis, in progress (2010).