



HAL
open science

A General Purpose Package (MADFOMS) for Predicting the Morphologies and Powder X-Ray Diffraction Patterns of Molecular Crystals

David Stuart Coombes, Richard Catlow, Ben Slater

► **To cite this version:**

David Stuart Coombes, Richard Catlow, Ben Slater. A General Purpose Package (MADFOMS) for Predicting the Morphologies and Powder X-Ray Diffraction Patterns of Molecular Crystals. *Molecular Simulation*, 2008, 34 (09), pp.873-877. 10.1080/08927020802235730 . hal-00515046

HAL Id: hal-00515046

<https://hal.science/hal-00515046>

Submitted on 4 Sep 2010

HAL is a multi-disciplinary open access archive for the deposit and dissemination of scientific research documents, whether they are published or not. The documents may come from teaching and research institutions in France or abroad, or from public or private research centers.

L'archive ouverte pluridisciplinaire **HAL**, est destinée au dépôt et à la diffusion de documents scientifiques de niveau recherche, publiés ou non, émanant des établissements d'enseignement et de recherche français ou étrangers, des laboratoires publics ou privés.

A General Purpose Package (MADFOMS) for Predicting the Morphologies and Powder X-Ray Diffraction Patterns of Molecular Crystals

Journal:	<i>Molecular Simulation/Journal of Experimental Nanoscience</i>
Manuscript ID:	GMOS-2008-0106
Journal:	Molecular Simulation
Date Submitted by the Author:	04-May-2008
Complete List of Authors:	Coombes, David; University College London, Chemistry Catlow, Richard; University College London, Chemistry Slater, Ben; University College London, Chemistry
Keywords:	molecular crystal, morphology, Diffraction, Prediction

SCHOLARONE™
Manuscripts

A General Purpose Package (MADFOMS) for Predicting the Morphologies and Powder X-Ray Diffraction Patterns of Molecular Crystals

David S Coombes, C Richard A Catlow and Ben Slater

Department of Chemistry, University College London, 20 Gordon Street, London, WC1H 0AJ, UK.

Abstract

We present a generalised procedure for predicting the morphologies and diffraction patterns of molecular crystals. The general purpose program MADFOMS (Morphologies and Diffraction For Organic Molecular Solids) is described. The success of the approach is illustrated by application to the polymorphs of 5-Methyl-2-[(2-nitrophenyl)amino]-3-thiophenecarbonitrile.

Introduction

Morphology prediction is an important area of study, particularly in relation to the pharmaceutical industry, since many properties of crystals, such as bio availability and solubility are dependent upon their shape. The morphologies of crystals can have a major impact on their suitability as potential drugs both at the processing and post processing stage. For example, in the production stage, there can be major problems if the morphology changes due to impurities or changes of solvent. Crystal morphology ultimately depends on the internal structure of crystals (molecular packing etc.) and is thus becoming of major importance in the area of crystal structure prediction, since different polymorphs often produce differently shaped crystals. A polymorph which produces crystals which have a platy morphology is unlikely to be formed in preference to a crystal which has a prismatic shape.[1]

Methods of systematically investigating the morphology of crystals were developed only comparatively recently, compared with when their structures could be elucidated by experimental means.[2] The earliest approach to predicting crystal morphology was the BFDH method[3-5], where the relative growth rate of a face is inversely proportional to the interplanar spacing d_{hkl} (i.e. the faces with the largest interplanar spacing have the slowest growth rates and are thus the most morphologically important). This method, however, takes no account of the molecular structure or

1
2
3 intermolecular forces. In 1955, Hartman and Perdok introduced the concept of
4 attachment energy and periodic bond chain (PBC) theory.[6] They classified faces
5 into three groups according to the number of PBCs in the growth slice. A PBC is a
6 chain of strong bonds, such as hydrogen bonds. A slice with two or more PBCs is an
7 F (flat) face; those with two or more are S (stepped) faces and the rest are K (kinked)
8 faces. The authors suggested that only F faces could grow according to a layer
9 mechanism, with the S and K faces having a continuous growth mode. Hence, F faces
10 will be slow growing and they will dominate morphologically. A more sophisticated
11 method to model the growth rates of faces was provided by the concept of the
12 attachment energy E_{att} (i.e. the energy released per molecule when a new slice of
13 depth d_{hkl} is attached to the crystal face), which it is argued is proportional to the
14 growth rate and hence inversely proportional to the morphological importance of the
15 face. Hartman and Bennema later showed that this assumption is valid for F-faces
16 below the roughening temperature.[7] The morphology determined in this way is
17 called the growth morphology as it is based on the idea of layers attaching themselves
18 to a growing crystal.
19
20
21
22
23
24
25
26
27
28
29
30
31

32
33 An alternative approach to modelling morphology is to calculate the surface energy,
34 which is the difference in energy of the atoms at the surface compared to those in the
35 bulk per unit surface area. For a crystal in equilibrium with its surroundings, the
36 surface energy must be a minimum for a given volume and hence the morphological
37 importance of a face is inversely proportional to the surface energy. This approach is
38 not generally appropriate for molecular crystals, since the resulting predicted
39 morphologies generally contain many more faces than those that are observed
40 experimentally.
41
42
43
44
45
46
47
48
49

50 In this paper we describe an automated approach coded within the MADFOMS
51 program, for calculating the morphologies of molecular crystals using an automated
52 method. The predicted morphologies can be visualised using a Wulff plot[8], which
53 gives an indication of the growth rates and relative sizes of each of the observed faces.
54 The utility of the new code is demonstrated by application to the polymorphs of
55 5-Methyl-2-[(2-nitrophenyl)amino]-3-thiophenecarbonitrile for which experimental
56 morphology data are available.
57
58
59
60

METHODOLOGY

In order to calculate the morphologies and powder x-ray diffraction patterns of molecular crystals, we used the methods outlined in Figure 1. In the following section we present first the theory behind the calculation of morphology. We describe both calculation of attachment energy and surface energy (although, as argued, the latter is not used here as it is not generally appropriate for organic molecular crystals). Secondly, we summarise the procedure used to obtain predicted morphologies of molecular crystals starting from the lattice vectors and fractional coordinates. Finally the use of the Objcryst++ program library to calculate powder X-Ray diffraction patterns is described.

Calculation of Attachment Energy

As discussed above, the attachment energy model[2] for the growth morphology of a crystal is based on the assumption that the growth rate of a face is proportional to the absolute value of the attachment energy.

The attachment energy E_{att} is defined as:

$$E_{att} = \sum_{i=1}^{\infty} E_i(hkl), \quad (1)$$

where $E_i(hkl)$ is the interaction energy per molecule between a slice of thickness d_{hkl} and the i^{th} underlying slice. The relationship between the attachment energy and slice energy is given by:

$$E_{crys} = E_{att} + E_{slice}, \quad (2)$$

where E_{crys} is the energy of the crystal, E_{att} is the attachment energy and E_{slice} is the energy of a slice of depth d_{hkl} .

The growth rate of a crystal face is assumed to be proportional to the absolute value of the attachment energy i.e. faces with low absolute attachment energies grow most slowly and thus have the most morphological importance. Since E_{crys} is constant for a

1
2
3 given crystal structure, a large slice energy implies a low absolute attachment energy
4 and so the face will be morphologically important.[7]
5
6
7

8 9 **Calculation of Surface Energy**

10
11 As noted, an alternative approach to calculating crystal morphology is to calculate the
12 surface energy, which is the difference in energy of the surface ions compared with
13 those in the bulk per unit surface area. The surface energy $\gamma(hkl)$ is defined as
14
15

$$16 \quad \gamma(hkl) = [E_{total}(hkl) - E_{boundary}(hkl) - nE_{cr}] / A(hkl)$$

17
18 where n is the number of unit cells on the surface and $A(hkl)$ is the surface area of the
19 simulation cell. E_{total} is the total energy of the system, $E_{boundary}$ is the difference in
20 energy between the surface atoms and the bulk atoms and E_{cr} is the energy of the
21 crystal. The surface free energy (which we approximate by the internal energy at 0 K)
22 must be a minimum for a crystal of given volume in equilibrium with its
23 surroundings. Thus the morphological importance of a face is inversely proportional
24 to the surface energy.
25
26

27 28 29 **Choice of Intermolecular Potential**

30
31 To model the intermolecular forces between the molecules we use a simple repulsion
32 dispersion potential together with a set of point charges. Our method was originally
33 developed to aid in the analysis of predicted crystals, where the MOLPAK-DMAREL
34 method is used to generate a large number of hypothetical crystal structures.[1,9-12]
35 Thus, in general we use the same isotropic $exp-6$ potential as employed in the crystal
36 structure prediction. Where an anisotropic intermolecular potential was employed (as
37 in[12], we use an equivalent isotropic potential for the morphology calculations).
38
39

40
41 The electrostatic interactions are modelled with a set of potential derived charges
42 obtained using the ChelpG[13] algorithm within the program GAUSSIAN98[14] from
43 the same wave function as was used to obtain the distributed multipole moments[15-
44 17] for the prediction. Potential derived charges give the most accurate reproduction
45 of the electrostatic potential around the molecules within the atomic charge
46
47
48
49
50
51
52
53
54
55
56
57
58
59
60

1
2
3 model.[18] Alternatively, the intermolecular potential parameters and charges from a
4 molecular mechanics force-field such as CVFF[19] can be used.
5
6

7 **Calculation of Powder X-Ray Diffraction Pattern**

8
9 In order to simulate the powder x-ray diffraction of observed and predicted structures
10 we use a command-line driven program . This employs the Objcryst++ routines,
11 which have been used in the program FOX[20,21] as a method for ab initio structure
12 determination from powder diffraction. We routinely calculate powder diffraction
13 patterns using an x-ray wavelength of 1.54056 Å for a range of 2θ from 5-60°,
14 although this can be easily altered, as demonstrated in the examples below. With the
15 program GNUPLOT the calculated diffraction pattern is then plotted and the data is
16 uploaded to a database.
17
18
19
20
21
22

23 **Programs Used**

24 Our procedure uses a combination of scripts for program control together existing
25 programs for morphology (GULP, GDIS, MARVIN's) and powder diffraction pattern
26 calculation (FOX/Objcryst++).
27
28
29

30 **Procedure**

31 The procedure we use to calculate morphologies is outlined in Figure 1. It involves
32 the following steps:
33

- 34 1. The atomic coordinates are assigned a potential type and charge.
- 35 2. The program GULP[22,23] calculates the internal energy of the bulk crystal
36 structure and generates an input file for the program MARVIN's.
- 37 3. GDIS[24] is used to generate the faces of interest using the BFDH
38 methodology. For each face there will be a number of suitable cuts of the
39 crystal face, which are also calculated by GDIS.
- 40 4. The program MARVIN's[25] then calculates the attachment energies and
41 surface energy for each of the faces and associated cuts in (3) above.
- 42 5. For each face, the cut with the lowest absolute attachment and or surface
43 energy is taken as that which will which be slowest growing. These faces are
44 then uploaded (in order of morphological importance) to a database for future
45 investigation. GDIS can also be used to visualise the predicted BFDH,
46 attachment energy or surface energy morphologies using a Wulff plot.
47 Employing a numerical integration technique we are also able to calculate the
48 growth volume[26] to assist in identifying the likelihood of predicted
49 polymorphs being observed.
50
51
52
53
54
55
56
57
58
59
60

- 1
2
3
4
5
6
7
8
9
10
11
12
13
14
15
16
17
18
19
20
21
22
23
24
25
26
27
28
29
30
31
32
33
34
35
36
37
38
39
40
41
42
43
44
45
46
47
48
49
50
51
52
53
54
55
56
57
58
59
60
6. Finally, the powder x-ray pattern is simulated using the Fox/Obcryst++ package.

The resulting MADFOMS package is available from the authors.

Case Study: The Known Polymorphs of ROY

Morphology Prediction Using the Attachment Energy Model

As an example, we demonstrate how our procedure can be used to model the morphologies of the polymorphs of 5-Methyl-2-[(2-nitrophenyl)amino]-3-thiophenecarbonitrile (see Figure 2), which is known as ROY because of the red, orange and yellow colours of the crystals. This molecule is known to crystallise in at least ten polymorphs[27-29], which differ in the mode of packing and molecular conformation (which results principally from the thiophene torsion relative to the *o*-nitroaniline fragment). Of these, seven have been fully solved. The crystal structures of six of the polymorphs were solved by Yu *et al.*[29] and one has been solved by Chen *et al.*[27]

The following potential was used for the calculation of the attachment energies. The charges were calculated using the ChelpG[13] algorithm for an MP2/6-31G** wave function using the program GAUSSIAN.[14] The other contributions to the intermolecular potential were modelled using an empirical isotropic exp-6 atom-atom potential. The parameters for C, Hc and Hp (hydrogen bonded to nitrogen) were taken from the FIT potential[30], while the parameters for S, O and N were taken from the work of Scherega in the 2001 blind test of crystal structure prediction.[31] The predicted morphologies using the attachment energy model are show in Figure 3. These are in very good agreement with the observed shapes of the crystals.[27] It is particularly noteworthy that we are able to predicted needle like morphologies for polymorphs ON and YN.

Prediction of Powder X-ray Diffraction Patterns

We have also predicted the powder patterns for two of the polymorphs (Y and YT04) using the wavelength that of 1.54184 Å used in the experimental determination and these are shown in Figure 4. Again they are in excellent agreement with the observed

1
2
3 powder patterns, thus indicating that our method is able to reliably reproduce
4 experimental data.
5
6

7 **Conclusion**

8
9
10 In this paper we have demonstrated a method that is able to routinely calculate the
11 morphologies and powder patterns of molecular crystals. The predicted shapes of the
12 crystals, as well as the powder patterns are in good agreement with the experimental
13 results. This will be of great value in studies of crystal structure prediction and in
14 guiding the development of crystals of pharmaceutical importance.
15
16
17
18

19 **Acknowledgement**

20 We wish to thank Professor JD Gale (Curtin University, Perth, Western Australia) for
21 provision of GULP. We are grateful to Professor Yu (Department of Pharmacy,
22 University of Wisconsin for providing pictures of the observed morphologies and for
23 useful discussions. We also acknowledge financial support from the EPSRC under
24 the open call project 'e-Science Technologies in the Simulation of Complex
25 Materials' and the Portfolio Partnership Project 'Synthesis, Design and Function in
26 New Materials Chemistry'.
27
28
29
30
31
32
33
34
35
36
37
38
39
40
41
42
43
44
45
46
47
48
49
50
51
52
53
54
55
56
57
58
59
60

Figure Captions

Figure 1 Scheme for prediction of properties

Figure 2 Molecular structure of ROY

Figure 3 Comparison of observed (left) and predicted (right) growth morphologies of the seven characterized polymorphs of ROY: (a) OP; (b) ON; (c) YN; (d) ORP; (e) Y; (f) R; (g) YT04. Experimental morphologies reproduced with permission. (a)-(f) from reference [29] (copyright 2000 American Chemical Society). (g) from reference [27] (copyright 2005 American Chemical Society).

Figure 4 Predicted (left) and Observed (right) powder patterns of two polymorphs of ROY: Y(top) and YT04 (bottom). Reproduced with permission from [27]. Copyright 2005 American Chemical Society.

REFERENCES

1. T. Beyer, G.M. Day and S.L. Price, *The prediction, morphology, and mechanical properties of the polymorphs of paracetamol*, J. Am. Chem. Soc. 123(2001), pp. 5086-5094.
2. Z. Berkovitch-Yellin, *Toward an abinitio derivation of crystal morphology*, J. Am. Chem. Soc. 107(1985), pp. 8239-8253.
3. A. Bravais, *Etudes crystallographiques*, Academie des Sciences, Paris, 1913.
4. G. Freidel, Bull. Soc. Fr. Miner 30(1907), pp. 326.
5. J.D.H. Donnay and D. Harker, Am. Miner. 22(1937), pp. 446.
6. P. Hartmann and W.G. Perdok, Acta Cryst. 8(1955), pp. 49.
7. P. Hartman and P. Bennema, *The attachment energy as a habit controlling factor*, J. Cryst. Growth 49(1980), pp. 145.
8. G. Wulff, Z. Kristallogr. 34(1901), pp. 449.
9. D.S. Coombes, G.K. Nagi and S.L. Price, *On the lack of hydrogen bonds in the crystal structure of alloxan*, Chem. Phys. Lett. 265(1997), pp. 532-537.
10. S.L. Price and K.S. Wibley, *Predictions of crystal packings for uracil, 6-azauracil, and allopurinol: The interplay between hydrogen bonding and close packing*, J. Phys. Chem. A 101(1997), pp. 2198-2206.
11. S.L. Price, *The computational prediction of pharmaceutical crystal structures and polymorphism*, Adv. Drug Deliv. Rev. 56(2004), pp. 301-319.
12. G.M. Day and S.L. Price, *A nonempirical anisotropic atom-atom model potential for chlorobenzene crystals*, J. Am. Chem. Soc. 125(2003), pp. 16434-16443.
13. C.M. Breneman and K.B. Wiberg, *Determining atom-centered monopoles from molecular electrostatic potentials - the need for high sampling density in formamide conformational-analysis*, J. Comput. Chem. 11(1990), pp. 361-373.
14. G.W.T. M. J. Frisch, H. B. Schlegel, G. E. Scuseria,, J.R.C. M. A. Robb, V. G. Zakrzewski, J. A. Montgomery, Jr., J.C.B. R. E. Stratmann, S. Dapprich, J. M. Millam,, K.N.K. A. D. Daniels, M. C. Strain, O. Farkas, J. Tomasi,, M.C. V. Barone, R. Cammi, B. Mennucci, C. Pomelli, C. Adamo,, J.O. S. Clifford, G. A. Petersson, P. Y. Ayala, Q. Cui,, D.K.M. K. Morokuma, A. D. Rabuck, K. Raghavachari,, J.C. J. B. Foresman, J. V. Ortiz, A. G. Baboul,, G.L. B. B. Stefanov, A. Liashenko, P. Piskorz, I. Komaromi,, R.L.M. R. Gomperts, D. J. Fox, T. Keith, M. A. Al-Laham,, A.N. C. Y. Peng, M. Challacombe, P. M. W. Gill,, W.C. B. Johnson, M. W. Wong, J. L. Andres, C. Gonzalez, and E.S.R. M. Head-Gordon, and J. A. Pople,, Gaussian 98,; software available at
15. A.J. Stone, *Distributed multipole analysis, or how to describe a molecular charge-distribution*, Chem. Phys. Lett. 83(1981), pp. 233-239.
16. A.J. Stone and M. Alderton, *Distributed multipole analysis - methods and applications*, Molecular Physics 56(1985), pp. 1047-1064.
17. S.L. Price, A.J. Stone and M. Alderton, *Explicit formulas for the electrostatic energy, forces and torques between a pair of molecules of arbitrary symmetry*, Molecular Physics 52(1984), pp. 987-1001.
18. K.B. Wiberg and P.R. Rablen, *Comparison of atomic charges derived via different procedures*, J. Comput. Chem. 14(1993), pp. 1504-1518.

- 1
2
3
4
5
6
7
8
9
10
11
12
13
14
15
16
17
18
19
20
21
22
23
24
25
26
27
28
29
30
31
32
33
34
35
36
37
38
39
40
41
42
43
44
45
46
47
48
49
50
51
52
53
54
55
56
57
58
59
60
19. P. Dauber-Osguthorpe, V.A. Roberts, D.J. Osguthorpe, J. Wolff, M. Genest and A.T. Hagler, *Structure and energetics of ligand-binding to proteins - escherichia-coli dihydrofolate reductase trimethoprim, a drug- receptor system*, Proteins 4(1988), pp. 31-47.
 20. V. Favre-Nicolin and R. Cerny, *Fox, 'free objects for crystallography': A modular approach to ab initio structure determination from powder diffraction*, J. Appl. Crystallogr. 35(2002), pp. 734-743.
 21. V. Favre-Nicolin and R. Cerny; software available at <http://objcryst.sourceforge.net/>
 22. J.D. Gale, *Empirical potential derivation for ionic materials*, Philos. Mag. B 73(1996), pp. 3-19.
 23. J.D. Gale, *Gulp: A computer program for the symmetry-adapted simulation of solids*, J. Chem. Soc.-Faraday Trans. 93(1997), pp. 629-637.
 24. S.D. Fleming and A.L. Rohl, *Gdis*; software available at <http://gdis.sourceforge.net>
 25. D.H. Gay and A.L. Rohl, *Marvin - a new computer code for studying surfaces and interfaces and its application to calculating the crystal morphologies of corundum and zircon*, J. Chem. Soc.-Faraday Trans. 91(1995), pp. 925-936.
 26. D.S. Coombes, C.R.A. Catlow, J.D. Gale, A.L. Rohl and S.L. Price, *Calculation of attachment energies and relative volume growth rates as an aid to polymorph prediction*, Cryst. Growth Des. 5(2005), pp. 879-885.
 27. S. Chen, I.A. Guzei and L. Yu, *New polymorphs of rox and new record for coexisting polymorphs of solved structures*, J. Am. Chem. Soc. 127(2005), pp. 9881-9885.
 28. S.A. Chen, H.M. Xi and L. Yu, *Cross-nucleation between rox polymorphs*, J. Am. Chem. Soc. 127(2005), pp. 17439-17444.
 29. L. Yu, G.A. Stephenson, C.A. Mitchell, C.A. Bunnell, S.V. Snorek, J.J. Bowyer, T.B. Borchardt, J.G. Stowell and S.R. Byrn, *Thermochemistry and conformational polymorphism of a hexamorphic crystal system*, J. Am. Chem. Soc. 122(2000), pp. 585-591.
 30. D.S. Coombes, S.L. Price, D.J. Willock and M. Leslie, *Role of electrostatic interactions in determining the crystal structures of polar organic molecules. A distributed multipole study*, J. Phys. Chem. 100(1996), pp. 7352-7360.
 31. W.D.S. Motherwell, H.L. Ammon, J.D. Dunitz, A. Dzyabchenko, P. Erk, A. Gavezzotti, D.W.M. Hofmann, F.J.J. Leusen, J.P.M. Lommerse, W.T.M. Mooij, S.L. Price, H. Scheraga, B. Schweizer, M.U. Schmidt, B.P. van Eijck, P. Verwer and D.E. Williams, *Crystal structure prediction of small organic molecules: A second blind test*, Acta Crystallogr. Sect. B-Struct. Sci. 58(2002), pp. 647-661.

1
2
3
4
5
6
7
8
9
10
11
12
13
14
15
16
17
18
19
20
21
22
23
24
25
26
27
28
29
30
31
32
33
34
35
36
37
38
39
40
41
42
43
44
45
46
47
48
49
50
51
52
53
54
55
56
57
58
59
60

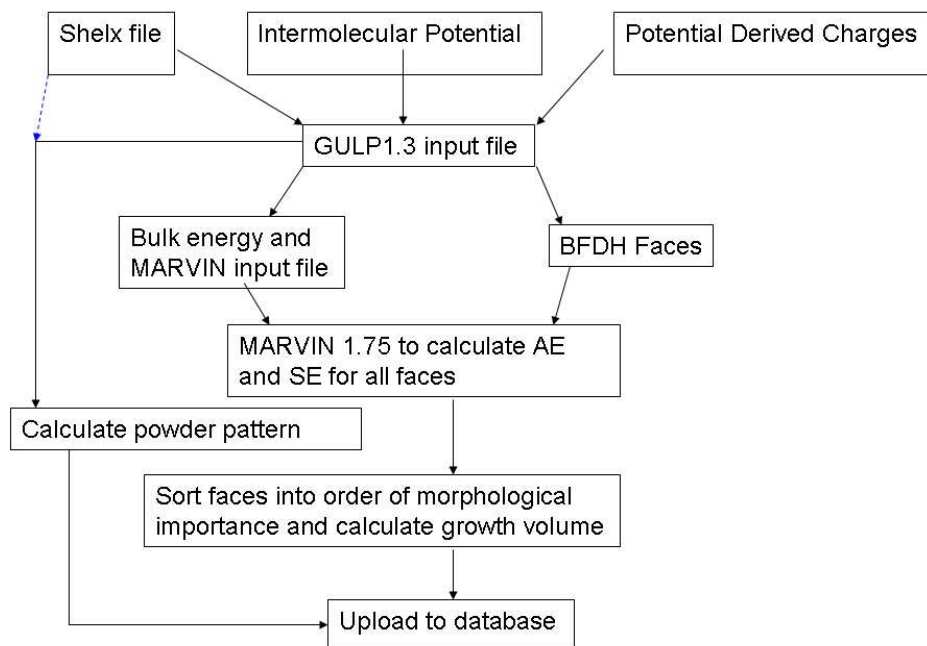


Figure 1

Scheme for prediction of properties
254x190mm (96 x 96 DPI)

View Only

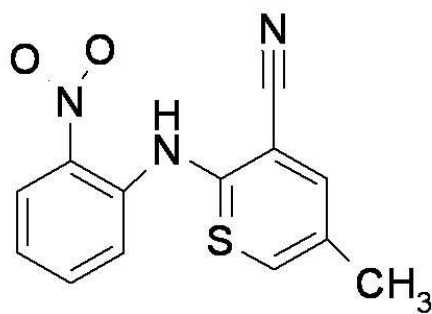


Figure 2

Molecular structure of ROY
254x190mm (96 x 96 DPI)

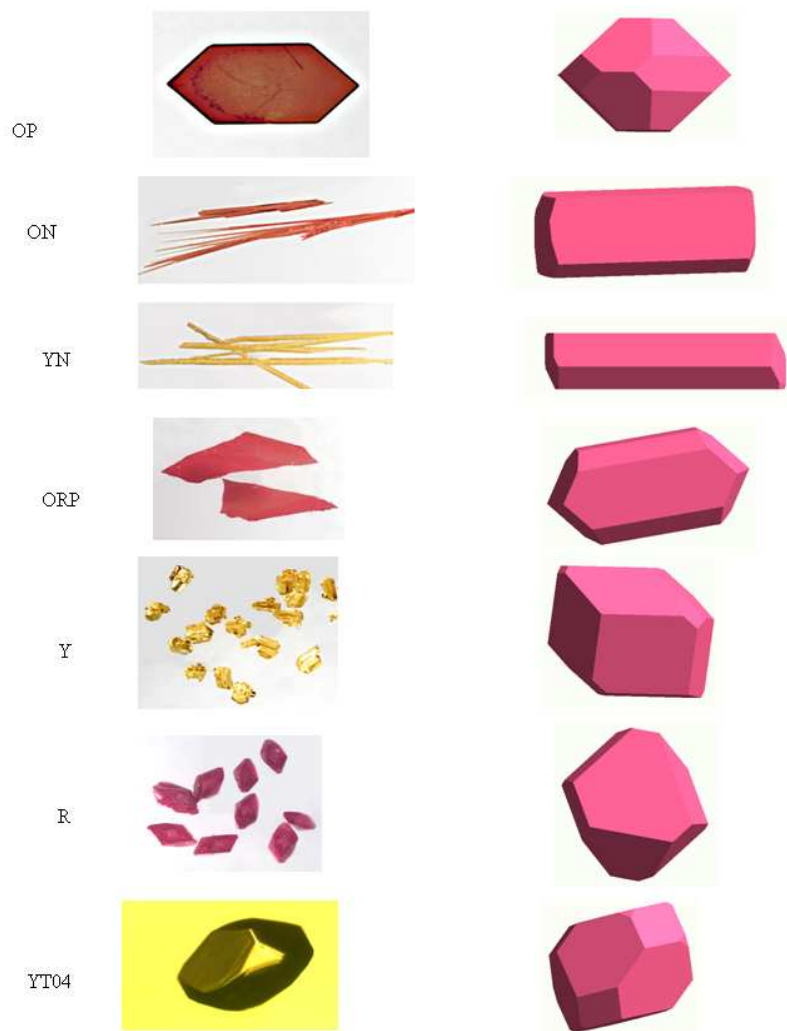


Figure 3

Comparison of observed (left) and predicted (right) growth morphologies of the seven characterized polymorphs of ROY: (a) OP; (b) ON; (c) YN; (d) ORP; (e) Y; (f) R; (g) YT04. Experimental morphologies reproduced with permission. (a)-(f) from reference [29] (copyright 2000 American Chemical Society). (g) from reference [27] (copyright 2005 American Chemical Society).
190x254mm (96 x 96 DPI)

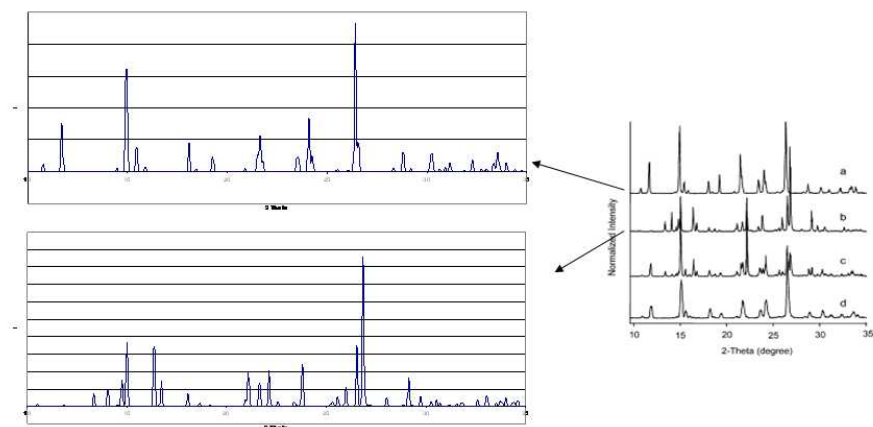


Figure 4

Predicted (left) and Observed (right) powder patterns of two polymorphs of ROY:Y (top) and YT04 (bottom). Reproduced with permission from [27]. Copyright 2005 American Chemical Society. 254x190mm (96 x 96 DPI)