



HAL
open science

Scotland the Grey: A Linked Demographic-CGE Analysis of the Impact of Population Ageing and Decline

Peter Mcgregor, Katerina Lisenkova, Karen Turner, Kim Swales, Nikos Pappas

► To cite this version:

Peter Mcgregor, Katerina Lisenkova, Karen Turner, Kim Swales, Nikos Pappas. Scotland the Grey: A Linked Demographic-CGE Analysis of the Impact of Population Ageing and Decline. *Regional Studies*, 2008, 44 (10), pp.1. 10.1080/00343400701654228 . hal-00514699

HAL Id: hal-00514699

<https://hal.science/hal-00514699>

Submitted on 3 Sep 2010

HAL is a multi-disciplinary open access archive for the deposit and dissemination of scientific research documents, whether they are published or not. The documents may come from teaching and research institutions in France or abroad, or from public or private research centers.

L'archive ouverte pluridisciplinaire **HAL**, est destinée au dépôt et à la diffusion de documents scientifiques de niveau recherche, publiés ou non, émanant des établissements d'enseignement et de recherche français ou étrangers, des laboratoires publics ou privés.



Scotland the Grey: A Linked Demographic-CGE Analysis of the Impact of Population Ageing and Decline

Journal:	<i>Regional Studies</i>
Manuscript ID:	CRES-2006-0271.R1
Manuscript Type:	Main Section
JEL codes:	R12 - Size and Spatial Distributions of Regional Economic Activity < R1 - General Regional Economics < R - Urban, Rural, and Regional Economics, R15 - Econometric and Input-Output Models Other Models < R1 - General Regional Economics < R - Urban, Rural, and Regional Economics, R11 - Regional Economic Activity: Growth, Development, and Changes < R1 - General Regional Economics < R - Urban, Rural, and Regional Economics, J11 - Demographic Trends and Forecasts < J1 - Demographic Economics < J - Labor and Demographic Economics
Keywords:	Scotland, Regional CGE Modelling, Ageing population, Migration

SCHOLARONE™
Manuscripts

1
2
3
4
5
6
7
8
9
10
11
12
13
14
15
16
17
18
19
20
21
22
23
24
25
26
27
28
29
30
31
32
33
34
35
36
37
38
39
40
41
42
43
44
45
46
47
48
49
50
51
52
53
54
55
56
57
58
59
60

Scotland the Grey: A Linked Demographic-CGE Analysis of the Impact of Population Ageing and Decline

Lisenkova, K.[†], McGregor, P.G.^{†‡*}, Pappas, N.[†],
Swales, J.K.^{†‡*}, Turner, K.^{†‡} and Wright, R.[‡]

[†] Fraser of Allander Institute, University of Strathclyde

[‡] Department of Economics, University of Strathclyde

* Centre for Public Policy for Regions, Universities of Glasgow and Strathclyde

This research was funded under the ESRC/Scottish Executive's Scottish Demography Initiative; grant number Res-342-25-0002. We are grateful to Duncan McNiven of the General Register Office for Scotland, Kay Russell, Dermot Rhatigan, Jamie Carter and Gary Gillespie from the Scottish Executive as well as Grant Allan from the Fraser of Allander Institute for their help and guidance through the course of this project. We also thank participants in: the ESRC Urban and Regional Study Group, Leeds, 2005; European Association of Population Economics, Verona, 2006, British and Irish Regional Science Association, Jersey, 2006; University of Waikato Economics Department Seminar, 2006. We are also grateful to two anonymous referees for their very useful comments on an earlier version of the paper.

1
2
3
4
5
6
7
8
9
10
11
12
13
14
15
16
17
18
19
20
21
22
23
24
25
26
27
28
29
30
31
32
33
34
35
36
37
38
39
40
41
42
43
44
45
46
47
48
49
50
51
52
53
54
55
56
57
58
59
60

Abstract: This paper links a multi-period economic Computable General Equilibrium (CGE) modelling framework with a demographic model to analyse the economic impact on Scotland of its projected ageing and declining population. The model quantifies the effect on aggregate economic variables, such as GDP, employment and competitiveness, and also on individual sectors. With the principal demographic projections, the fall in population, and particularly working-age population, has a depressing impact on economic activity. By changing the demographic parameters, we track the impact of increasing net migration, a policy actively being pursued by the Scottish Executive. However, the required size of the annual net-migration needed to neutralise the adverse natural demographic changes is far higher than the current trends.

JEL classification: R12, R13, R15; J11

Key words: Scotland, regional CGE modelling, ageing population, migration

1. Introduction

There is currently apprehension amongst policy makers concerning Scottish demographic trends. The principal UK Government Actuaries Department's (GAD) projections for the Scottish population to 2040 are shown in Figure 1.1. These projections indicate that under the principal assumptions concerning demographic parameters, by 2040 Scottish total and working age populations are 2.6% and 14.4% below the base year (2000) values respectively.

Demographic change has many economic implications. The novelty of the present analysis is that population projections, based upon assumptions concerning key demographic parameters, are used to generate exogenous shocks to a Computable General Equilibrium (CGE) model. That is to say, a demographic model (POPGROUP) is linked to an economic model of Scotland (AMOS) in order to isolate and identify the system-wide economic impacts of changes in population size and composition.

The strength of the linked modelling strategy is that changes in the size and composition of the local population will have both direct demand- and supply-side effects, particularly in a regional economy facing nationally determined and financed fiscal, social security and pension arrangements. These direct impacts generate endogenous economic responses on variables such as the level of investment, wage rates, labour market participation and price competitiveness. The interaction of these variables produces the changes in aggregate indicators, such as total employment, GDP and consumption. These linked model simulations can be performed using official demographic projections. However, scenario analysis, where the demographic parameters, such as fertility rates, longevity or the extent of net migration, deviate from their projected values is also available.

In the present paper we concentrate primarily, though not exclusively, on the effect on the level of economic activity in Scotland, and we focus especially on the labour market impacts. We are particularly interested in the extent to which migration counteracts the negative effects of a declining and ageing population. This is of particular policy relevance as the Scottish Executive, through its Fresh Talent

1
2
3
4 Initiative, Working in Scotland programme is attempting to retain foreign students
5 studying in Scottish higher education establishments, essentially attempting to
6 increase immigration. Whilst we identify the impacts in individual sectors, these
7 impacts are not driven here by changes in the composition of public and private sector
8 demand to meet the requirements of an ageing population. Rather the sectoral impacts
9 occur through the less frequently studied supply-side effects linked to a tighter local
10 labour market.
11
12
13
14
15
16
17

18 The paper is organised in the following way. Section 2 outlines the theoretical
19 analysis of the economic effects of population change on the labour market. Sections
20 3 and 4 detail the POPGROUP demographic model and the AMOS computable
21 general equilibrium (CGE) economic model (Simpson, 2005; Harrigan *et al*, 1991).
22 Section 5 gives the economic impacts that would be associated with the principal UK
23 Government Actuaries Department's (GAD) Scottish population projections. Section
24 6 identifies the extent to which increased net migration to Scotland would reverse the
25 negative changes in activity associated with population ageing and decline. Section 7
26 is a short conclusion.
27
28
29
30
31
32
33
34

35 36 **2. Theoretical Analysis of the Impact of Population Change on the Aggregate** 37 **Scottish Labour Market.** 38 39 40

41
42 In this section we provide the conceptual underpinning for the simulation
43 results that are reported in Sections 5 and 6. We focus on the labour market, which is
44 analysed using an aggregate labour supply and demand framework, an appropriate
45 method given the economic issues raised by an ageing population. The analysis in this
46 section is implicitly long run so that the identified equilibrium wage and employment
47 levels are those towards which the economy is being attracted over time.
48
49
50
51
52
53
54

55 Figure 2.1 represents the interaction of the labour supply and general
56 equilibrium labour demand curves in the unified Scottish labour market. The wage is
57 the real consumption wage. We assume that there are no geographical or skill sub-
58 markets within the Scottish economy and that labour can move freely between
59 sectors. The analysis is comparative static in that it identifies the impact on the
60

1
2
3
4 equilibrium real consumption wage and employment of an exogenous demographic
5 disturbance.
6
7
8
9

10 The upward sloping labour supply curve is straightforward. It indicates that
11 with a fixed working-age population, an increase in the real wage will increase the
12 quantity of labour supplied.¹ The labour demand curve is a little more complex. It
13 represents the relationship between the quantity demanded of labour and the real
14 consumption wage in long-run equilibrium. This is where incomes and all other
15 relevant prices are endogenous, and the capital stock is fully adjusted to the new
16 commodity outputs and input prices.
17
18
19
20
21
22
23
24
25

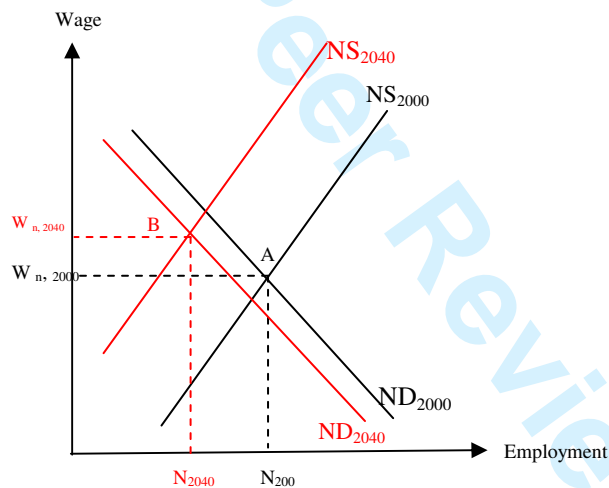
26 The general-equilibrium labour demand curve is drawn as downward sloping
27 and this reflects the case in the AMOS model with default Scottish parameter values.
28 Essentially if the real consumption wage is increased exogenously, the price of all
29 domestically produced goods will rise relative to imports. As a result competitiveness
30 falls, exports fall and the marginal propensity to import rises. The endogenous
31 household income and consumption will fall and capital stock adjustments will reduce
32 the labour intensity of production so that domestic output and quantity of labour
33 demanded falls.
34
35
36
37
38
39
40
41
42

43 However, the general equilibrium nature of the function means that other
44 relationships are possible. This can be illustrated for extreme assumptions. For
45 example, if the economy were closed to trade, or if the law of one price held in all the
46 region's export markets, then the long-run general equilibrium labour demand curve
47 would be horizontal. In these circumstances, fixing the rate of interest, as we do in the
48 AMOS model, fixes the real wage (Sraffa, 1960). Under these extreme assumptions
49 demand plays no part in determining employment.
50
51
52
53
54
55
56
57
58
59
60

¹ As explained in Section 4 we actually use a wage curve specification for the regional labour market. (Blanchflower and Oswald, 1994; Layard *et al.* 1991). However, the wage curve approach gives results that are observationally equivalent to a labour supply curve although the interpretation is somewhat different.

On the other hand, for combinations of extreme low export demand and factor substitution elasticities, the general equilibrium labour demand curve can be vertical or even perversely upward sloping (McGregor *et al.*, 1995). With a vertical labour demand curve, of course, the labour supply would now have no role to play in determining aggregate employment. However, to reiterate, we would expect, and with the AMOS model find, a downward sloping general equilibrium labour demand curve, so that changes in employment and real wages can result from either the demand or supply side of the labour market.

Figure 2.1: The Labour Market in 2000 and in 2040 under the GAD population projections.



In Figure 2.1 we compare the long-run labour market equilibrium in 2040 with that in 2000, under the assumption that the Government Actuaries Department (GAD) population projections apply and that real *per capita* Scottish government expenditure remains constant. The initial equilibrium is represented by point A, where the base-period (2000) labour demand and supply curves ND_{2000} and NS_{2000} intersect. This generates the initial equilibrium employment and real consumption wage levels $w_{n,2000}$, N_{2000} .

According to the GAD projection, over the period to 2040, the population in Scotland will decline and age. These exogenous changes in population size and age composition shift both the labour demand and supply schedules. First, the fall in the

1
2
3
4 working age population reduces labour supply at each real consumption wage level
5
6 generating an inward shift of the labour supply curve. This is illustrated in the Figure
7
8 2.1 by the new labour supply curve NS_{2040} , which lies to the left of the original labour
9
10 supply curve NS_{2000} .

11
12
13
14 However, the change in population also affects labour demand. In particular,
15
16 we assume that real government expenditure per head remains constant, so that
17
18 Scottish real government expenditure varies as the total population varies. This is a
19
20 realistic assumption given the framework of our analysis and the way in which the
21
22 funding for Scottish public sector budget is administered. Funding is determined
23
24 through the Barnett formula, which has two key features. First, public expenditure in
25
26 Scotland is mainly financed through the Westminster Parliament. Second, Barnett is a
27
28 population-based formula that has operated in practice to maintain the Scottish *per*
29
30 *capita* public expenditure relative to the English level (Bailey and Fingland, 2004;
31
32 Christie and Swales, 2005).²

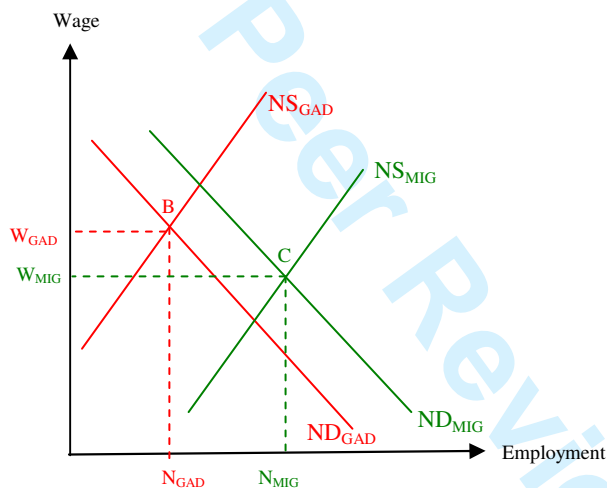
33
34
35 In the AMOS model, any exogenous change in product demand shifts the
36
37 labour demand curve in the same direction. AMOS operates with linear homogeneous
38
39 production and consumption functions and an exogenous interest rate. For a given real
40
41 consumption wage rate, AMOS responds to a demand injection in the long run as an
42
43 extended (investment and benefits endogenous) Input-Output (IO) system (McGregor
44
45 *et al*, 1996). This means that the demand curve shifts by the extent of the exogenous
46
47 employment change plus the appropriate Type II IO employment multiplier. Because
48
49 total population has fallen, exogenous government expenditure is lower, so that labour
50
51 demand also declines at each real consumption wage rate. This shifts the labour
52
53 demand curve to the left, to ND_{2040} .

54
55
56 The new equilibrium is at point B, the intersection of the general equilibrium
57
58 labour demand and supply curves ND_{2040} and NS_{2040} . Both the labour demand and
59
60 supply shifts lead to lower employment, but the impact on the wage depends on the

² It is important to note that this is not the way the formula should work if it is applied precisely (Cuthbert, 1998; McGregor and Swales, 2005; McLean and McMillan, 2003)

relative size of the shifts. Our prior expectation is that the reduction in labour supply will be much greater than the reduction in labour demand. There are two reasons for this. First, for Scotland the projected proportionate fall in the working age population is much greater than the fall in the population as a whole. Second, government expenditure is only one of the elements of final demand. Under these conditions, the larger proportionate reduction in labour supply will stimulate wage increases as the labour market tightens.

Figure 2.2: The Labour Market in 2040 comparing GAD's projections and positive net migration every year.



In Figure 2.2 we extend the analyses to show the impact on the labour market in 2040 of increased inward migration. Figure 2.2 compares the labour market in 2040 under two different scenarios. One scenario simply takes the GAD population projections. The second represents a situation in which there is positive net migration, perhaps as a result of Scottish Executive policies, such as the Fresh Talent Initiative (www.scotlandistheplace.com).

The situation under the GAD projection is given by point B, which is the intersection of the labour demand and supply functions NS_{2040} , ND_{2040} . This was the final position illustrated in Figure 2.1. Now impose net in-migration at a rate higher than that assumed under GAD. The Scottish working age population, and therefore the Scottish labour force, is going to be higher than under the GAD prediction for

1
2
3
4 2040. This is illustrated in Figure 2.2 by an outward shift of the labour supply curve
5 to NS_{MIG} . Labour demand will also shift outwards to ND_{MIG} as a result of higher
6 population-linked government expenditure. The new equilibrium is at point C, the
7 intersection of the new labour supply and demand curves. In this case the shifts in
8 labour demand and supply both work to increase equilibrium employment (compared
9 to the equilibrium at B). Further, because we expect that the increase in labour supply
10 will dominate the increase in labour demand, pressure in the labour market should
11 ease and the wage fall.
12
13
14
15
16
17

18
19
20
21 Figures 2.1 and 2.2 show the qualitative impact of population ageing and in-
22 migration on the labour market. These labour market changes will have major impacts
23 on the economy overall. In particular, with an ageing population, we expect a negative
24 effect upon competitiveness due to the increased wage, which is a key production
25 cost. This reduced competitiveness has a negative impact on GDP. On the other hand,
26 increased net migration eases the labour market, improves competitiveness and
27 increases GDP. However, the interactions within the economy are naturally more
28 complex and detailed than this and are explored in the simulations reported in
29 Sections 5 and 6. However, note that the figures that are reported in Sections 5 and 6
30 are for time periods over which such long-run adjustment is not yet complete.
31 Similarly, where we report period-by-period simulations, we are tracing out the
32 adjustment path to a long-run equilibrium that is perpetually changing.
33
34
35
36
37
38
39
40
41
42

43 44 45 **3. POPGROUP: The Demographic Model.** 46 47 48 49

50 Demographic projections were produced using the POPGROUP software
51 developed by the Cathie Marsh Centre for Census and Survey Research (CCSR) at the
52 University of Manchester (Simpson, 2005). POPGROUP uses the conventional cohort
53 component method for the demographic projections. This method tracks each cohort
54 and its mortality, fertility, and migration over time. Starting with a base population,
55 year-by-year deaths are subtracted, and births and net migration are added to the
56 population. This program allows us to project future population by sex and age
57
58
59
60

structure, based on the current age-sex structure and additional assumptions about the main demographic variables: mortality, fertility and migration.

A simple algebraic account of the model follows. The population of sex, s , aged $x + 1$ on his or her last birthday in year $t + 1$, $P_s(x+1, t+1)$, is determined as the sum of two elements. The first is the population of sex s whose age at his or her last birthday in year t was x , $P_s(x, t)$, who survive to the next year. The probability of survival is age, sex and time specific, and is given as $S_s(x+1, t+1)$. The second element is the level of net migration, which is again sex, age and time specific and given as $NM_s(x+1, t+1)$. Therefore:

$$P_s(x+1, t+1) = P_s(x, t)S_s(x+1, t+1) + NM_s(x, t) \quad x \geq 0$$

The population of sex s who are aged 0 in year $t+1$ is determined by the number of births in time t , $B_s(t)$, times the probability of surviving to period $t+1$ plus the number of migrants in this category, so that:

$$P_s(0, t+1) = B_s(t)S_s(0, t+1) + NM_s(0, t)$$

The birth rate is given by the population of females, f , broken down by age, multiplied by the age specific fertility rates, ASFR :

$$B(t) = \sum_x 0.5 [P_f(x, t) + P_f(x, t+1)] ASFR(x, t)$$

with births divided between males and females according to the sex ratio of 106 males to 100 females.

Adding up the components of change across ages and sexes, we obtain the total population in year $t+1$ as:

$$P(t+1) = P(t) + B(t) - D(t) + NM(t)$$

where $D(t)$ is the number of deaths and is given as:

$$D(t) = \sum_s \sum_x \{P_s(x, t)[1 - S_s(x+1, t+1)]\} + \sum_s B_s(t)[1 - S_s(0, t+1)]$$

In all the simulations the actual population structure estimated by the Government Actuaries Department (GAD) are used for the period from 2000 to 2004. The population projections therefore begin from 2004. Our projections are based on fertility and mortality assumptions employed by the GAD in their 2004-based principal Scottish population projection, which was published on October 20, 2005.³ Using this as a base we have produced several scenarios of population projections depending on the assumed level of migration. For the age distribution of migrants, we generally assume that 1/3 are in the age group 0 – 19 and 2/3 in the age group 20 – 39. Within these age groups, migrants are distributed equally by age and sex. This age-sex structure can be summarized as “young couples with one child”.

4. AMOS: The Economic Model.

AMOS is an acronym for *A Macro-Micro Model Of Scotland*. It is best regarded as a Computable General Equilibrium modelling framework “... because it encompasses a range of behavioural assumptions, reflected in equations which can be activated and configured in many different ways” (Harrigan *et al*, 1991, p. 424). This allows the user to choose from a variety of model closures and key parameter values, as appropriate for particular applications. A good general description of CGE modelling is given in Greenaway *et al* (1992, Ch. 2) and an extensive review of regional CGE models can be found in Partridge and Rickman (1998).

³ Available from the GAD website www.gad.gov.uk, population projections section

1
2
3
4 We have calibrated the AMOS modelling framework to data on the Scottish
5 economy given in the form of a Social Accounting Matrix (SAM) for the year 2000.
6 The model has 3 transactor groups - households, firms and government - and 2
7 exogenous external transactors – the rest of the UK (RUK) and the rest of the world
8 (ROW). The model has 25 activities/commodities and these are listed in Table A1.1
9 in Appendix 1. A condensed account of the model structure is given in Table A2.1.
10
11
12
13
14

15
16 In the version of AMOS used here, production takes place in perfectly
17 competitive industries using multi-level production functions. This means that in
18 every time period all commodity markets are in equilibrium, with price equal to the
19 marginal cost of production. Value-added is produced using capital and labour via
20 standard production function formulations so that, in general, factor substitution
21 occurs in response to relative factor-price changes. Typically, constant elasticity of
22 substitution (CES) technology is adopted, which is the case in simulations reported
23 here.⁴ In each industry intermediate purchases are modelled as the demand for a
24 composite commodity with fixed (Leontief) coefficients. These are substitutable for
25 imported commodities via an Armington link. The composite input then combines
26 with value-added (capital and labour) in the production of each sector's gross output.
27 Cost minimisation drives the industry cost functions (equation 1 in Table A2.1) and
28 the factor demand functions (equations 7 and 8 in Table A2.1).
29
30
31
32
33
34
35
36
37
38
39
40

41 Whilst the AMOS framework offers a wide choice of labour market closures,
42 in the simulations reported here real consumption wage determination is characterised
43 by a regional bargaining function (also expressed as a wage curve, represented as
44 equation 5 in Table A2.1). This establishes a negative relationship between the real
45 wage and the unemployment rate (Minford *et al.*, 1994). Empirical support for this
46 wage curve specification is now widespread, even in a regional context (Blanchflower
47 and Oswald 1994). The bargaining function is parameterised using the regional
48 econometric work reported in Layard *et al.* (1991):
49
50
51
52
53
54
55
56

$$\ln rw_{n,t} = a - 0.113 \ln u_t + 0.40 \ln rw_{n,t-1}$$

57
58
59
60

⁴ Leontief and Cobb-Douglas options are available as special cases.

1
2
3
4
5
6 where rw is the Scottish real wage, u is the Scottish unemployment rate, t is the time
7 subscript and a is a calibrated parameter.⁵ To transform the real wage to the nominal
8 wage, we multiply by the consumer price index (equation 2 in Table A2.1).
9
10

11
12
13 Perfect labour mobility is assumed between sectors, generating a unified
14 labour market. Therefore, although wage rates vary between sectors in the base-year
15 data set, in the simulations wages in all sectors change by the same proportionate
16 amount in response to exogenous shocks. The real consumption wage in each time
17 period is then derived through the interaction of the resulting wage curve and the
18 general equilibrium labour demand curve (equation 9 in Table A2.1). In the derivation
19 of the general equilibrium labour demand curve, it is important to note that all prices
20 and incomes are taken to be endogenous.
21
22
23
24
25
26
27
28

29 The four main components of commodity final demand (represented by
30 equation 12 in Table A2.1) are consumption, investment, government expenditure and
31 exports. Household consumption is a linear homogenous function of real disposable
32 income and relative prices (equations 2, 11 and 13 in Table A2.1). Real government
33 expenditure per head is assumed to be constant (equation 17, Table A2.1) and in these
34 simulations the population is typically determined exogenously using the
35 demographic model. Exports are determined by exogenous external demand via an
36 Armington link, making exports relative price sensitive (equation 18, Table A2.1).
37
38
39
40
41
42
43
44

45 The modelling of investment demand is a little more complex. In the multi-
46 period variant of the model, capital stock adjustment at the sectoral level, which
47 ultimately determines aggregate investment demand, is dealt with in the following
48 way. Within each time period, both the total capital stock and its sectoral composition
49 are fixed. The interaction between this fixed capital supply and capital demand at the
50 sectoral level determines each sector's capital rental rate (equation 10, Table A2.1).
51
52
53
54
55
56

57 The capital stock in each sector is then updated between periods via a simple
58 capital stock adjustment procedure, according to which investment equals
59
60

1
2
3
4 depreciation plus some fraction of the gap between the desired and actual level of the
5 capital stock (equations 6, 14 and 15 in Table A2.1).⁶ Desired capital stocks are
6 determined on cost-minimisation criteria, using the user cost of capital as the relevant
7 price of capital (equations 3 and 4 in Table A2.1). In the base period the economy is
8 assumed to be in long-run equilibrium, where desired and actual capital stocks are
9 equal, with investment simply equal to depreciation. Investment as a source of
10 product demand is then determined by running the demand for increased capital stock
11 by sector through the capital matrix (equation 16, Table A2.1).
12
13
14
15
16
17
18
19

20 In the model, we do not impose macro-economic constraints, such as balance
21 of payments or budget deficit limits or targets. There is no reason for these to bind at
22 the regional level. However, we do track these surpluses. We also interpret the
23 conceptual time periods of the model as years: annual data are used for the calibration
24 and, where applicable, the estimation of parameter values.
25
26
27
28
29

30 As stated earlier in this section, the structural characteristics of the AMOS
31 model are parameterised on a Social Accounting Matrix (SAM) for Scotland for 2000.
32 In all sectors, the elasticity of substitution between capital and labour in the
33 production of value added is 0.3. However, we adopt fixed coefficients in the
34 generation of the intermediate composite. This is required because of the large
35 number of zero entries. The Armington trade elasticities for imports and exports are
36 2.0. The speed of adjustment parameter for the adjustment of actual to desired capital
37 stock is 0.5.
38
39
40
41
42
43
44
45
46

47 Before discussing the simulation results it is important to clarify a key
48 characteristic of the AMOS model. AMOS is not a forecasting model. When it is
49 parameterised on the base year data set, it is assumed that the economy is in long-run
50 equilibrium. If there are no changes to the exogenous variables and the model is run in
51 period-by-period mode, then the model will simply report an unchanging economy.
52 This assumption of initial long-run equilibrium is clearly a convenient fiction. We
53
54
55
56
57
58

59 ⁵ The calibration is made so that the model, together with the set of exogenous variables, will recreate
60 the base year data set. This calibrated parameter does not influence simulation outputs, but the
assumption of initial equilibrium is, of course, important.

⁶ This process of capital accumulation is compatible with a simple theory of optimal firm behaviour
given the assumption of quadratic adjustment costs. The whole process is analogous to Tobin's q .

1
2
3
4 make this assumption because it greatly increases the transparency of the model and
5
6 eases initial parameterisation.
7
8

9
10 In the simulation results that we report in Sections 5 and 6, the only exogenous
11 changes that are introduced into the model are the direct government demand and
12 labour force changes associated with the population projections. Therefore the results
13 should be interpreted as deviations from what would have occurred with a population
14 that is constant both in size and age composition.
15
16
17

18 19 20 21 **5. The Consequences for the Scottish Economy of the Government Actuaries** 22 **Department (GAD) Population Projections.** 23 24

25
26 The assumptions underlying the principal GAD projection for Scotland are a
27 fertility rate of 1.6, life expectancies of 79.2 years for men and 83.7 for women and
28 net immigration at a constant level of 4000 *per annum*. In Figure 1.1 we tracked the
29 percentage changes from the base year in total population and total working-age
30 population generated by these assumptions. According to this scenario, the working
31 age population is expected to fall below its base year (2000) value in 2012 and decline
32 by 14.37% by 2040. Total population falls below the base-year value in 2032 and is
33 2.62% below it by 2040.
34
35
36
37
38
39
40
41

42 The demographic data represented in Figure 1.1 are used to generate
43 exogenous disturbances in the AMOS model as discussed in Section 4. This gives the
44 simulation results summarised in Table 5.1.
45
46
47
48
49

50 *Table 5.1 here*
51

52
53 As we explain in Section 2, the population change produces two simultaneous
54 exogenous impacts. One operates on the demand side and the other on the supply side.
55 Changes in total population affect the demand side, generating changes in government
56 demand as we hold real *per capita* government expenditure constant. Changes in
57 working age population are modelled as supply-side changes, operating through
58 adjustments in the labour force, which affect the tightness of the labour market.
59
60

1
2
3
4 One important technical point needs to be made here. We can enter the period-
5 by-period government demand changes so that they precisely match the period-by-
6 period changes in population. However, as the model is presently configured, we can
7 only impose changes in the labour force by means of a linear trend. Therefore, for
8 example, with the GAD projection shown in Figure 5.1 above, the 14% fall in the
9 working age population over the 40 years between 2000 and 2040 is modelled as a
10 linear reduction in the labour force equal to an annual rate of 0.5% of the original
11 2000 value. This means that whilst the end-point simulation results are correct, there
12 is some loss of accuracy in the adjustment path.⁷
13
14
15
16
17
18
19
20
21

22 Also recall that the results in Table 5.1 should be interpreted as variations
23 away from what would have occurred with population held constant in both size and
24 age composition. Begin by looking at the Scottish employment and GDP figures. As
25 we expect from the theoretical discussion in Section 2, employment falls, in this case
26 by 9.0% in 2040, with a corresponding decline in GDP of a little less at 8.2%. Note
27 that because of the linearisation of the change in the working age population in the
28 model, the results shown in Figure 5.2 will overestimate the reduction in the initial
29 years, where an increase in output and employment is expected, but underestimate the
30 rate (but not the level) of decline in the latter period of the simulation where working
31 age population is falling.
32
33
34
35
36
37
38
39
40

41 Table 5.1 reveals two important points. The first is that the fall in employment
42 is much lower than the fall in working age population. Working age population
43 declines by 14.4% % whilst employment declines by only 9.0%, implying an increase
44 in the participation rate and a fall in the unemployment rate to partially offset the
45 negative supply side impacts. This tightening of the Scottish labour market is apparent
46 in the real wage results where the real Scottish take-home wage of increases by 7.7%
47 by the year 2040.⁸
48
49
50
51
52
53
54

55 The second key point is that the fall in GDP closely follows the decline in
56 employment. In considering the fall in GDP, these are driven primarily by the
57
58

59
60 ⁷ In fact, the imposed adjustment path will affect the endpoint results, but this influence should be small.

1
2
3
4 exogenous supply side changes introduced by the fall in the labour force, given that
5 the actual population reduction is relatively small. There is a reduction in Scottish
6 exports generated by the decline in Scottish competitiveness that accompanies the
7 tighter labour market. Table 5.1 shows the Scottish consumer and export price
8 (competitiveness) indices. Note that consumer price index increases by 2.6% to 2040,
9 but the increase in export price index is even higher, at 3.4%.⁹ As a consequence, the
10 demand for exported goods falls by 6.4%. The capital stock will adjust to changes in
11 output demand but more slowly than the changes in employment in particular sectors
12 so that the change in GDP will slightly lag the changes in employment. There will
13 also be a tendency for production to become more capital intensive as the nominal
14 wage increases, so that there is some substitution of capital for labour.
15
16
17
18
19
20
21
22
23
24

25
26 In measuring the aggregate impact on the Scottish economy of the projected
27 demographic changes, up to now we have focussed on GDP and employment. This is
28 primarily because total employment and GDP are figures that attract concern from
29 both the Scottish Executive and the UK central government as measures of economic
30 performance. However, from a welfare perspective, the change in real consumption is
31 probably of greater concern for the Scottish people. In this respect, public
32 consumption is exogenous in the simulations reported in this paper and is taken to
33 change in line with population. As discussed in Section 2, this replicates the present
34 actual operation of the funding formula for the UK devolved regions. However
35 private consumption is endogenous. To 2040, the fall in private consumption, by
36 5.2%, is less than the fall in GDP and employment. This reflects the increase in real
37 wage that accompanies the decline in working age population. However, the fall in
38 household consumption is greater than the fall in total population, so that there is a
39 fall in overall Scottish *per capita* consumption to 2040.
40
41
42
43
44
45
46
47
48
49
50

51
52 ***Figure 5.1 here***
53
54

55
56 Figure 5.1 shows the expected changes by 2040 in sectoral output and
57 employment generated by the GAD demographic projections for Scotland. Note first
58
59

60
⁸ There is not full pass through of the increased wages to prices, that is prices increase by less than wages, primarily because of the presence of imports from outwith Scotland as elements of the consumption basket and as intermediate inputs in production.

1
2
3
4 that these simulations do not take into account any variation in the composition of
5 government and household consumption demand that will be driven by population
6 ageing. For example, there is much discussion of the implications for health care and
7 education provision resulting from longer life expectancy (Economic Policy
8 Committee and European Commission, 2006). Such compositional demand changes
9 are not considered here.
10
11
12
13
14

15
16 These disaggregated results therefore partly reflect more general demand-side
17 factors, such as general movements between private and public consumption as the
18 population structure changes. However, the disaggregation primarily picks up the
19 often-neglected supply-side factors that are operating through the tightening of the
20 labour market and the impact that these have on the competitiveness of individual
21 sectors.
22
23
24
25
26
27
28

29 Figure 5.1 indicates that by 2040 the outputs of all sectors are affected
30 negatively. However, there is a wide variation in the impacts, ranging from an output
31 reduction of 2.8% for Public Administration to 11.8% for Construction. In general
32 those sectors selling most of their output to government demand (Public
33 Administration, Social Work, Health, Education) are affected least because
34 government expenditure, which in these simulations is linked to total population,
35 remains relatively constant over the whole simulation period, falling by only 2.6% by
36 2040. In addition these sectors are sheltered in the sense that they are subject to
37 limited international competition.
38
39
40
41
42
43
44
45
46

47 The extent of the negative effect upon other sectors (which are mostly hit
48 much harder) is determined by two factors. First, labour intensive sectors are worst
49 affected because of the increased cost of labour. Second, the sectors that are more
50 exposed to international trade feel the negative competitiveness effect more strongly.
51 For example, sectors such as Agriculture clearly suffer these negative competitiveness
52 effects. However, Other Manufacturing, which is the most export intensive sector, is
53 not so severely hit because it is not labour intensive. In all sectors, employment falls
54
55
56
57
58
59
60

⁹ We measure the price of the exported good as the weighted average of export prices using base year weights.

1
2
3
4 by more than output because, as the price of labour rises, firms substitute capital for
5 labour. Also, it takes more time to optimally adjust the capital stock.
6
7
8

9
10 Before discussing the effect of changing the demographic assumptions that
11 underpin the principal GAD projections, it is instructive to test how sensitive the
12 measured economic impacts are to changing the values of key economic parameters in
13 the AMOS model. We focus on two parameters here. These are the Armington trade
14 elasticities and the elasticity of the wage bargaining function. For both parameters we
15 consider the variation in key endogenous variables in the final period, 2040. The
16 results are given in Tables 5.2 and 5.3.
17
18
19
20
21
22

23
24 Table 5.2 shows the results of varying the trade price elasticities. Our default
25 value for the Armington trade elasticities is 2, and this is the value used to generate
26 the results shown in Table 5.1. Where the trade elasticities are increased this implies
27 that the markets for both exports and imports are more price elastic. This is often
28 taken to represent a more open economy where the relevant product markets are more
29 competitive. In terms of the analysis in Section 2 we expect an increase in trade
30 elasticities to produce an increase in the elasticity of the general equilibrium labour
31 demand curve, so that the quantity of labour demanded becomes more sensitive to
32 changes in the real wage. Where the trade elasticities are reduced, the opposite is the
33 case. The results shown in Table 5.2 support this interpretation.
34
35
36
37
38
39
40
41
42

43 *Table 5.2 here*
44
45

46
47 Focussing first on the labour market variables, where the trade elasticity is
48 increased to 4, the 2040 fall in employment is greater (10.1%) and the increase in the
49 real wage is lower (5.6%), than under the default simulation. Increasing the
50 Armington elasticities reduces the movement in the terms of trade that accompany a
51 tightening of the labour market and increases the output adjustments that are required
52 to bring the economy back into equilibrium. There is a larger fall in GDP and
53 consumption than under the default elasticity and the cpi and export price
54 (competitiveness) adjustments are lower. Where the Armington elasticities are
55 reduced to unity, the adjustments are in the opposite direction. In this case the real
56 wage, cpi and export prices increase by more and employment, GDP and consumption
57
58
59
60

1
2
3
4 fall by less than for the default simulations. Whilst with the low export demand
5 elasticity *per capita* GDP still falls, *per capita* consumption shows a slight increase.
6
7
8

9
10 In order to test how sensitive the results are to variation in labour market
11 assumptions, we conducted simulations using the GAD population projection under
12 two limiting cases. The first imposes within-period fixed labour supply. This means
13 that labour supply is a given proportion of the labour force, where the labour force is
14 adjusted period-by-period through demographic changes. There is therefore assumed
15 to be no unemployment or participation rate adjustment as the labour market tightens.
16 This implies a wage curve that is infinitely elastic.¹⁰ In the analytical framework
17 outlined in Section 2, in any individual time period, this situation is represented by a
18 vertical labour supply curve.
19
20
21
22
23
24
25
26

27 The second, alternative, assumption is that there is so much slack in the local
28 labour market that any change in labour demand is met by a corresponding change in
29 employment but no adjustment to the real wage. In this case, in each time period the
30 labour supply curve would be horizontal and employment adjusts to changes in labour
31 demand through changes in the unemployment and participation rates. This
32 corresponds to a wage curve where the elasticity is zero.
33
34
35
36
37
38
39

40 In the fixed labour supply case we expect the employment reduction and the
41 increase in the real wage to be larger than under the default simulations. In the fixed
42 real wage scenario, the opposite results hold: we expect the employment to fall and
43 the wage increase to be less than in the conventional wage curve account. However,
44 when we attempt to run the model with a fixed real wage, the model fails to solve.
45 The problem is that in this case the model produces a negative unemployment rate.
46 The key practical point is simply this: the population constraints implied by the GAD
47 demographic projections, combined with a fixed government expenditure per head,
48 must put upward pressure on real wages. The fixed real wage scenario is unfeasible.
49
50
51
52
53
54
55
56

57 On the other hand, where labour supply is completely inelastic, the whole
58 adjustment to the labour force contraction must come through higher wages. As we
59
60

1
2
3
4 have argued already, we expect employment and output to fall by more under this
5 labour market closure, as participation and unemployment rates are not allowed to
6 adjust. This will be combined with an even greater pressure upon wages. In Table 5.3
7 we present the percentage changes in the main aggregate indicators for 2040 under the
8 fixed labour supply and wage curve labour market closures.
9
10
11
12

13
14
15 *Table 5.3 here*
16
17

18
19 Indeed our results are consistent with what economic theory suggests.
20 Employment with fixed labour supply is expected to fall by 14.4%, exactly in line
21 with the reduction in the labour force (and working age population), whilst under the
22 bargaining closure the employment reduction is only 9.0%. The corresponding figures
23 for GDP and the wage rate show a reduction of 13.3% in GDP and an increase in the
24 real wage of 13.7% with the fixed labour supply, as compared to a GDP reduction of
25 8.2% and a real wage increase of 7.7% with the wage curve closure. By definition,
26 under fixed labour supply, the unemployment rate remains unaltered, whilst under
27 bargaining the unemployment rate is almost halved.
28
29
30
31
32
33
34
35
36

37 **6. A Wider Range of Migration Scenarios.**
38
39

40
41 Elsewhere we have tested the sensitive of these economic results to changes in
42 a range of demographic parameters. (Lisenkova *et al*, 2006). These demographic
43 parameters are the birth rate, the male and female life expectancy, and the migration
44 rate. We used the GAD high, principal and low estimates for these parameters as
45 guidelines. The demographic parameter with the biggest economic impact is the rate
46 of net migration, and it is this variable that has attracted the most policy interest. For
47 this reason we have undertaken extensive simulations where we vary the migration
48 parameter. However, the model is entirely flexible concerning demographic effects
49 and could be equally used to simulate the impact of an increasing birth rate, further
50 increases in life expectancy or demographic disturbances, such as those associated
51 with wars or mass migration.
52
53
54
55
56
57
58
59
60

¹⁰ Remember that the wage curve represents the wage as a function of the unemployment rate. A perfectly elastic wage curve is therefore observationally equivalent to a perfectly inelastic labour supply curve.

1
2
3
4
5
6
7
8
9
10
11
12
13
14
15
16
17
18
19
20
21
22
23
24
25
26
27
28
29
30
31
32
33
34
35
36
37
38
39
40
41
42
43
44
45
46
47
48
49
50
51
52
53
54
55
56
57
58
59
60

Figure 6.1 shows the GDP changes over time under the high, principal and low values for Scottish net migration parameter given by GAD. In the principal GAD Scottish projections, the net migration is set at 4,000 *per annum*. GAD suggests 12,000 in-migrants and 4,500 out-migrants as appropriate high and low annual values for migration.

Figure 6.1 here

We here extend this analysis of the impact of migration by performing a range of simulations where we vary the migration rate, whilst holding the other demographic parameters constant at their GAD principal values. Specifically, we report simulations where the annual rate of in-migration is: -10,000, zero, 4,000 (the current GAD principal projection), 5,000, 10,000, 20,000, 30,000, 40,000, 50,000, and 60,000.

Before considering the simulation results it is instructive to see how these projected rates compare to the actual Scottish net migration figures over the recent past. Figure 6.2 shows these values since 1950. Up to 1990 Scotland experienced substantial net out migration. However, since 1990 net migration has fluctuated around zero. An important point in assessing these simulations is that the maximum net migration figure for any one year is 27,200, though this did occur in 2003. Values of annual net migration of 30,000 and above have simply not been observed in the recent past for Scotland.

Figure 6.2 here

Summaries of the main aggregate economic and demographic indicators for these alternative migration simulations are given in Table 6.1. For the simulations with migration rates that differ from those for which we have GAD projections, the

1
2
3
4 demographic projections are made using the POPGROUP model.¹¹ The subsequent
5 time sequences for total and working age population are then used as exogenous
6 shocks in the AMOS model.
7
8
9

10
11 *Table 6.1 here*
12
13

14
15 We focus attention here on a subset of five indicative migration scenarios,
16 together with the GAD principal projection. These are for Scottish in-migration of –
17 10,000, zero, 10,000, 20,000 and 40,000 per annum. The first key point is that only
18 with a net migration above 10,000 per annum is total population projected to be
19 greater than the base year (2000) value in 2040, and only with a net migration of
20 above 20,000 *per annum* is working age population higher.
21
22
23
24
25

26
27 In Figures 6.3 to 6.6 we present the changes in GDP, employment, real wage
28 and consumption for these indicative net migration scenarios. The economic results
29 are consistent with the analysis in Section 2. We begin with Figure 6.3 and 6.4, which
30 give the percentage changes in GDP and employment. Note that only for net
31 migration rates of 20,000 *per annum* and over do GDP and employment levels rise as
32 a result of population change. With in-migration values below this, both GDP and
33 employment fall.
34
35
36
37
38
39
40

41 *Figure 6.3 here*

42 *Figure 6.4 here*
43
44
45

46
47 The mechanisms driving these results stem primarily from the labour market
48 and the subsequent impact on competitiveness. Figure 6.4 shows the real wage change
49 associated with the different migration scenarios. In this case, the 20,000 in-migration
50 case generates a small increase in the real wage. We know that in this simulation, the
51 working age population is rising, but more slowly than the total population. In terms
52 of the analysis in Section 2, the outward shift of the labour demand curve, as
53 government expenditure rises in line with total population, is greater than the outward
54 shift in the labour supply curve as the working age population increases. There is
55
56
57
58
59
60

¹¹ Our population projections are not exactly comparable to the GAD projections, so that some inconsistencies occur. Specifically, we assume an age distribution for migrants that is slightly different

1
2
3
4 therefore an increase in employment but also a small increase in the wage. However,
5 for the examples where net migration is less than 20,000, the wage increase is much
6 greater and is not accompanied by any expansion in government expenditure. The
7 tightening of the labour market is reflected in reduced competitiveness, with the price
8 of exported goods falling only for those simulations where in-migration is greater than
9 20,000 *per annum*.
10
11
12
13
14

15 *Figure 6.5 here*
16

17
18 Finally, it is useful to look at the impact of alternative rates of net migration on
19 consumption. This is shown in Figure 6.6. As with GDP, the change in total
20 consumption in 2040 becomes positive only where net migration is 20,000 per annum.
21 However, the variation in consumption is less than the variation in GDP. Further,
22 changes in migration do not improve *per capita* consumption, but actual reduce it.
23
24
25
26
27
28

29 *Figure 6.6 here*
30

31
32 These results suggest that immigration has a positive impact on economic
33 activity but that net migration of around 20,000 *per annum* is required in order to fully
34 offset the negative effects of a “naturally” declining and ageing population. This level
35 of in-migration will prevent working age population from shrinking up to 2040.
36
37
38
39
40

41 7. Conclusions

42
43
44

45
46 In this paper we explore the macroeconomic consequences of the principal
47 GAD projected declining and ageing population in Scotland using methods which
48 combine both the POPGROUP demographic model and the AMOS economic model
49 for Scotland. Our main conclusion is that the resulting tightening of the labour market
50 will have adverse consequences for the Scottish employment level, growth and
51 competitiveness. For the principal GAD demographic projections by 2040 Scottish
52 total and working age populations are 2.6% and 14.4% below the base year (2000)
53 values. This generates a fall in Scottish employment and GDP of 9.0% and 8.2%
54
55
56
57
58
59
60

from that in the GAD projections.

1
2
3
4 respectively below the levels that would have occurred had the population size and
5 composition remain constant.
6
7
8

9
10 The impact that demographic change might have on economic activity has
11 been a concern for Scottish policy makers. The demographic variable with the biggest
12 economic impact is the rate of net migration and it is this variable that has attracted
13 the most policy interest. The advantage of increased net migration is that immigrants
14 are mainly of working age and are accompanied by children. However, if current
15 demographic trends continue, policy initiatives, such as the Scottish Executive's Fresh
16 Talent Initiative need to produce a positive annual net migration of 20,000 in order to
17 prevent the labour force shrinking by 2040.
18
19
20
21
22
23
24

25 There are, of course, issues that merit further investigation and may play a
26 crucial role in forming future macroeconomic trends in the light of changing
27 demographics. Two seem particularly significant. First there will be effects upon the
28 composition of both private and public sector consumption demand associated with
29 population ageing. This concerns not only the differences in the tastes and needs as an
30 individual ages but also issues such as the political power of older voters. Secondly, if
31 young and old workers are qualitatively different, with different skills and other work
32 characteristics, the ageing of the workforce will generate qualitative labour market
33 effects not captured in the AMOS model at present. This will affect not only the
34 overall productivity of the workforce but also potentially the distribution of wage
35 income between young and old workers.
36
37
38
39
40
41
42
43
44
45
46
47
48
49
50
51
52
53
54
55
56
57
58
59
60

Figure 1.1- Percentage changes from the base year (2000) values for working age and total population using the principal GAD projection.

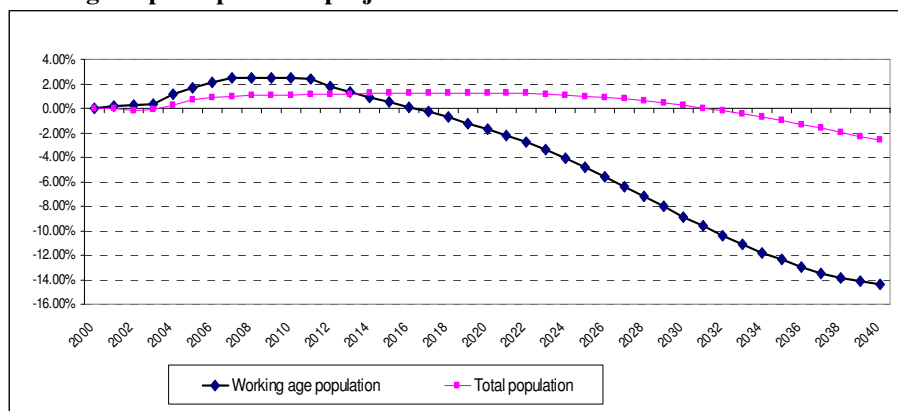


Table 5.1- Percentage change of aggregate economic and demographic variables under the principal GAD projection

GAD	2000	2005	2010	2020	2030	2040
GDP	0.00	-0.42	-1.12	-3.03	-5.41	-8.15
Real wage	0.00	1.12	2.15	4.12	5.98	7.65
Consumption	0.00	-0.20	-0.60	-1.75	-3.28	-5.22
Working Age Population	0.00	1.71	2.50	-1.69	-8.87	-14.37
Total population	0.00	0.67	1.09	1.28	0.25	-2.62
Total employment	0.00	-0.60	-1.43	-3.54	-6.07	-8.97
Competitiveness index	0.00	0.26	0.62	1.51	2.48	3.39
CPI	0.00	0.20	0.46	1.14	1.88	2.55

Figure 5.1- Impact on sectoral output and employment. (Percentage changes by the year 2040.)

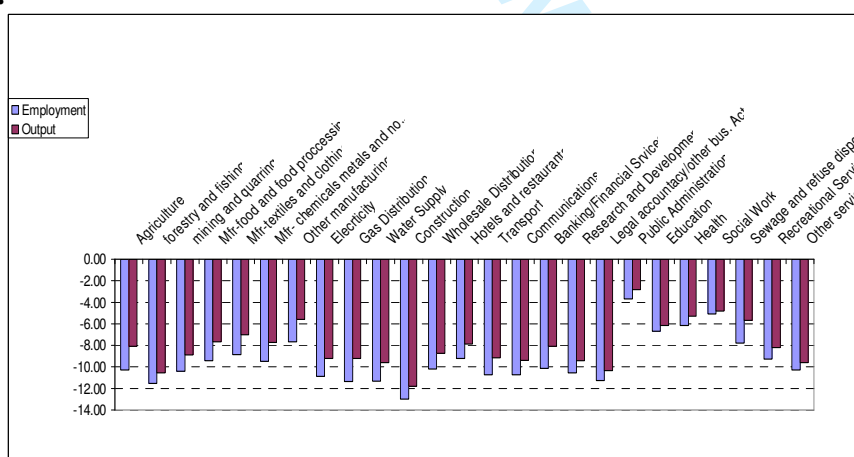


Table 5.2: Percentage change of aggregate economic and demographic variables for 2040 with the GAD net migration scenario, but varying the Armington trade elasticities

	Trade Elasticities		
	1	2	4
GDP	-6.32	-8.15	-9.25
Real wage	11.74	7.65	5.61
Consumption	-2.01	-5.22	-6.95
Working Age Population	-14.37	-14.37	-14.37
Total population	-2.62	-2.62	-2.62
Total employment	-7.29	-8.97	-10.07
Competitiveness index	6.30	3.39	1.95
CPI	4.94	2.55	1.36

Table 5.3: Percentage change of aggregate economic and demographic variables for 2040 with the GAD net migration scenario, but varying the labour market closure assumptions

	Bargaining (LNJ estimates)	Fixed Labour Supply
GDP	-8.15	-13.26
Real wage	7.65	13.65
Consumption	-5.22	-6.48
Working Age Population	-14.37	-14.37
Total population	-2.62	-2.62
Total employment	-8.97	-14.37
Competitiveness index	3.39	6.42
CPI	2.55	4.79

Figure 6. 1 Trends of GDP for alternative migration assumptions

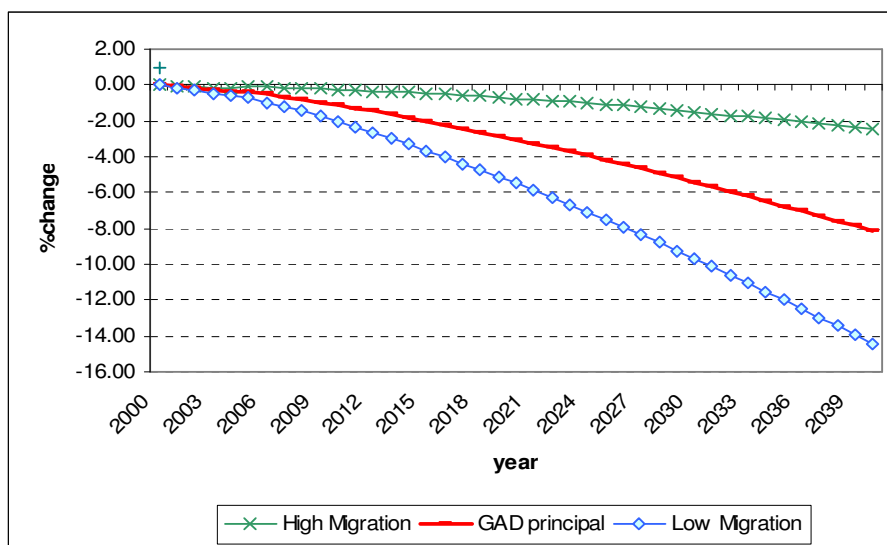


Figure 6.2- Net migration Scotland 1950-2005. Source General Register Office for Scotland.

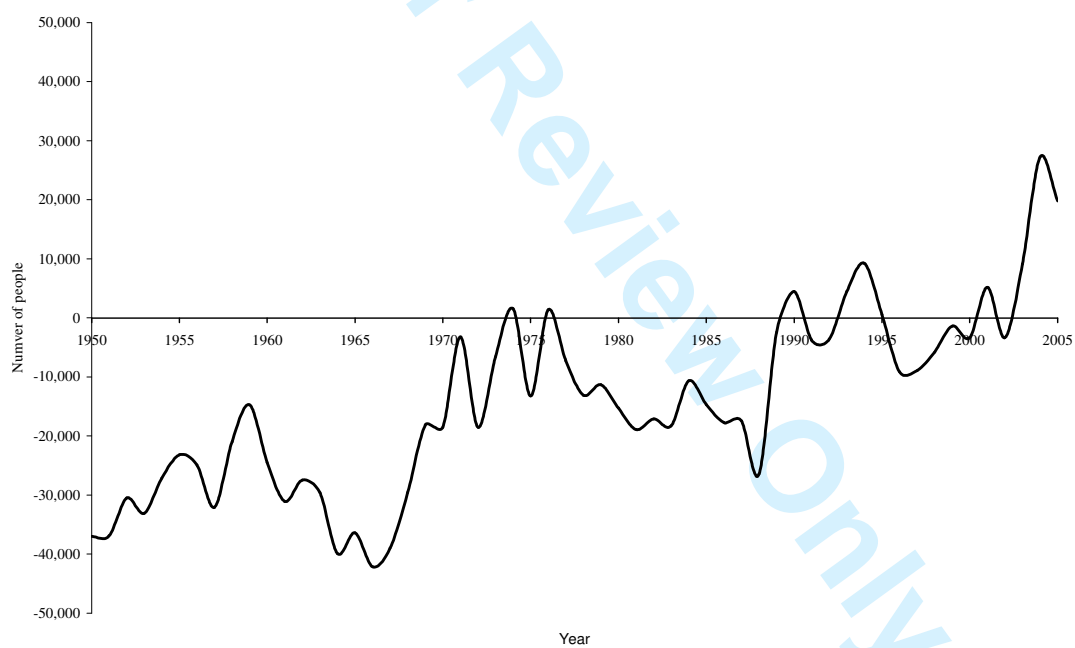


Table 6. 1 Main aggregate economic indicators for different net migration scenarios

neg10000	2000	2005	2010	2020	2030	2040
GDP	0.00	-1.08	-2.92	-7.77	-13.69	-20.37
Real wage	0.00	2.23	4.28	8.67	13.58	19.09
Consumption	0.00	-0.66	-1.91	-5.03	-8.85	-13.29
Working Age Population	0.00	0.95	-0.30	-8.07	-19.63	-29.73
Total population	0.00	0.06	-1.32	-4.64	-9.60	-16.69
Total employment	0.00	-1.49	-3.68	-9.03	-15.35	-22.39
Competitiveness index	0.00	0.46	1.10	2.93	5.25	7.94
CPI	0.00	0.31	0.74	2.09	3.79	5.66
Zero	2000	2005	2010	2020	2030	2040
Gross Domestic Product (income measure)	0.00	-0.72	-1.91	-5.03	-8.85	-13.19
Real wage	0.00	1.58	3.04	6.04	9.15	12.29
Consumption	0.00	-0.43	-1.19	-3.13	-5.56	-8.49
Working Age Population	0.00	1.17	1.17	-3.86	-12.16	-19.08
Total population	0.00	0.26	-0.08	-1.01	-3.28	-7.53
Total employment	0.00	-1.01	-2.42	-5.85	-9.93	-14.53
Competitiveness index	0.00	0.34	0.81	2.12	3.66	5.29
CPI	0.00	0.23	0.57	1.56	2.71	3.90
GAD	2000	2005	2010	2020	2030	2040
GDP	0.00	-0.42	-1.12	-3.03	-5.41	-8.15
Real wage	0.00	1.12	2.15	4.12	5.98	7.65
Consumption	0.00	-0.20	-0.60	-1.75	-3.28	-5.22
Working Age Population	0.00	1.71	2.50	-1.69	-8.87	-14.37
Total population	0.00	0.67	1.09	1.28	0.25	-2.62
Total employment	0.00	-0.60	-1.43	-3.54	-6.07	-8.97
Competitiveness index	0.00	0.26	0.62	1.51	2.48	3.39
CPI	0.00	0.20	0.46	1.14	1.88	2.55
5000	2000	2005	2010	2020	2030	2040
GDP	0.00	-0.44	-1.13	-2.93	-5.18	-7.78
Real wage	0.00	1.03	1.98	3.84	5.60	7.13
Consumption	0.00	-0.24	-0.66	-1.74	-3.20	-5.06
Working Age Population	0.00	1.29	1.90	-1.76	-8.41	-13.75
Total population	0.00	0.36	0.55	0.83	-0.12	-2.92
Total employment	0.00	-0.62	-1.44	-3.42	-5.81	-8.57
Competitiveness index	0.00	0.23	0.55	1.40	2.31	3.16
CPI	0.00	0.17	0.40	1.05	1.75	2.38
10000	2000	2005	2010	2020	2030	2040
GDP	0.00	-0.24	-0.57	-1.47	-2.66	-4.14
Real wage	0.00	0.65	1.29	2.55	3.65	4.50
Consumption	0.00	-0.11	-0.25	-0.67	-1.37	-2.44
Working Age Population	0.00	1.41	2.60	0.34	-4.69	-8.41
Total population	0.00	0.45	1.17	2.65	3.04	1.66
Total employment	0.00	-0.34	-0.74	-1.71	-2.98	-4.54
Competitiveness index	0.00	0.15	0.39	0.99	1.59	2.08
CPI	0.00	0.12	0.31	0.78	1.24	1.60

Table 6.1 (continued)

20000	2000	2005	2010	2020	2030	2040
GDP	0.00	0.16	0.50	1.28	1.98	2.48
Real wage	0.00	-0.06	0.04	0.32	0.51	0.49
Consumption	0.00	0.18	0.57	1.44	2.17	2.63
Working Age Population	0.00	1.66	4.04	4.58	2.78	2.24
Total population	0.00	0.65	2.43	6.30	9.34	10.84
Total employment	0.00	0.21	0.61	1.49	2.26	2.80
Competitiveness index	0.00	0.01	0.10	0.29	0.42	0.43
CPI	0.00	0.04	0.14	0.32	0.41	0.39
30000	2000	2005	2010	2020	2030	2040
GDP	0.00	0.53	1.51	3.82	6.19	8.41
Real wage	0.00	-0.73	-1.08	-1.52	-1.91	-2.40
Consumption	0.00	0.46	1.38	3.50	5.61	7.51
Working Age Population	0.00	1.84	5.50	8.79	10.29	12.88
Total population	0.00	0.85	3.67	9.95	15.66	20.01
Total employment	0.00	0.72	1.87	4.45	7.03	9.40
Competitiveness index	0.00	-0.12	-0.15	-0.27	-0.47	-0.77
CPI	0.00	-0.03	0.00	-0.05	-0.22	-0.49
40000	2000	2005	2010	2020	2030	2040
GDP	0.00	0.89	2.47	6.19	10.09	13.84
Real wage	0.00	-1.37	-2.09	-3.07	-3.83	-4.57
Consumption	0.00	0.74	2.19	5.53	8.98	12.25
Working Age Population	0.00	2.08	6.96	13.03	17.76	23.56
Total population	0.00	1.05	4.94	13.61	21.98	29.19
Total employment	0.00	1.22	3.08	7.22	11.45	15.47
Competitiveness index	0.00	-0.23	-0.38	-0.74	-1.17	-1.66
CPI	0.00	-0.10	-0.12	-0.35	-0.71	-1.15
50000	2000	2005	2010	2020	2030	2040
GDP	0.00	1.24	3.37	8.41	13.71	18.87
Real wage	0.00	-1.96	-3.01	-4.38	-5.38	-6.25
Consumption	0.00	1.02	2.99	7.53	12.27	16.87
Working Age Population	0.00	2.33	8.40	17.24	25.23	34.20
Total population	0.00	1.24	6.18	17.26	28.30	38.36
Total employment	0.00	1.70	4.22	9.82	15.57	21.11
Competitiveness index	0.00	-0.35	-0.58	-1.12	-1.72	-2.34
CPI	0.00	-0.16	-0.22	-0.58	-1.08	-1.64
60000	2000	2005	2010	2020	2030	2040
GDP	0.00	1.57	4.23	10.51	17.13	23.62
Real wage	0.00	-2.52	-3.84	-5.51	-6.65	-7.59
Consumption	0.00	1.30	3.78	9.50	15.49	21.39
Working Age Population	0.00	2.57	9.83	21.45	32.71	44.84
Total population	0.00	1.44	7.43	20.92	34.62	47.54
Total employment	0.00	2.16	5.31	12.28	19.45	26.43
Competitiveness index	0.00	-0.45	-0.75	-1.44	-2.16	-2.86
CPI	0.00	-0.21	-0.30	-0.76	-1.37	-2.01

Figure 6.3 – Trends of GDP for alternative migration scenarios

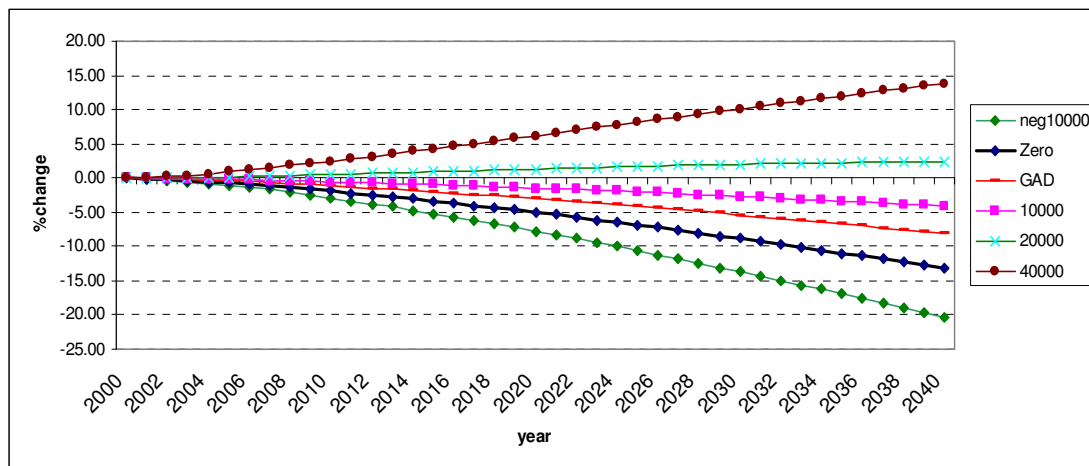


Figure 6.4- Trends of employment for alternative migration scenarios

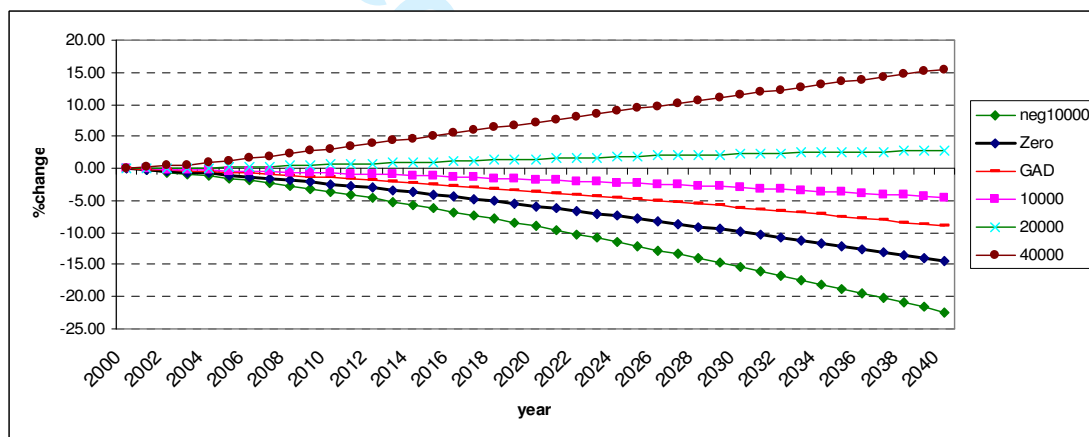


Figure 6.5 Trends of real wage for alternative migration scenarios

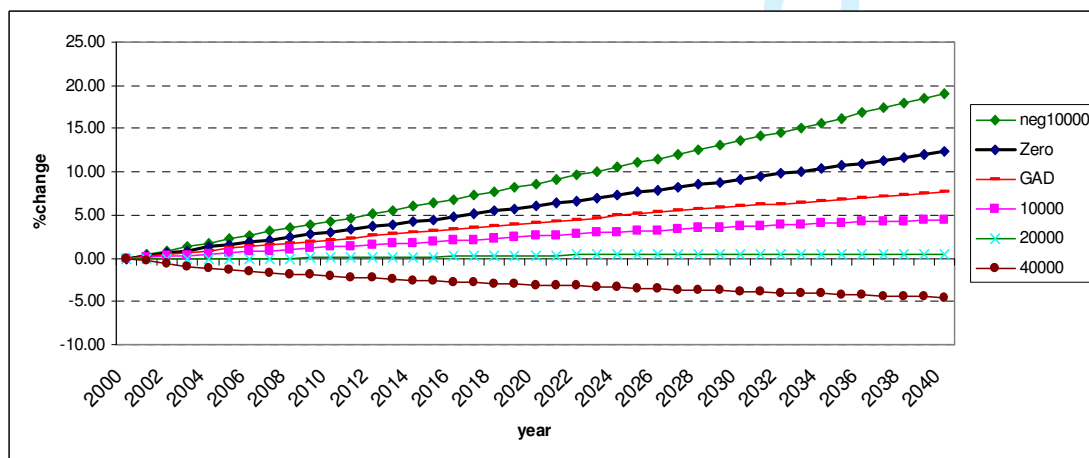
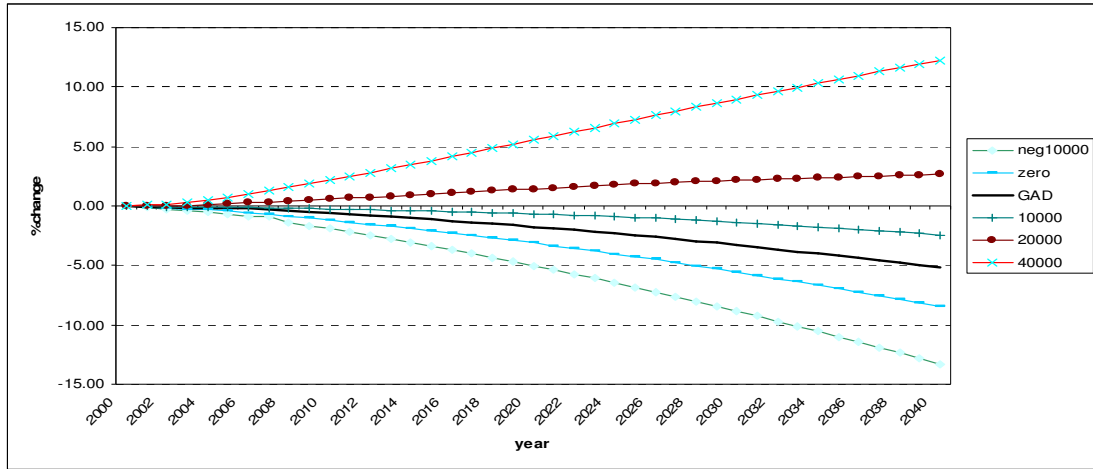


Figure 6 .6 Trends of consumption for alternative migration scenarios



Peer Review Only

References

Bailey, S.J. and Fingland, L. (2004) 'Convergence of Public Expenditures in UK Territories', *Regional Studies*, vol. 38, pp. 845 – 858.

Blanchflower, D. and Oswald, A. (1994), *The Wage Curve*, MIT Press, Cambridge, MA.

Christie, A. and Swales, J.K. (2005) "The Barnett Allocation Mechanism: Formula plus Influence?", CPPR Discussion Paper 10, Centre for Public Policy for Regions, Universities of Glasgow and Strathclyde, Glasgow.

Cuthbert, J. (1998) 'The Implications of the Barnett formula', Saltire Paper No 1, Scottish National Party, Edinburgh.

Economic Policy Committee and the European Commission (2006), *The Impact of Ageing on Public Expenditure: Projections for the EU25 Member States on Pensions, Health Care, Long-Term Care, Education and Unemployment Transfers*.

Greenaway, D., Leyborne, S.J., Reed G.V. and Whalley, J. (1993), *Applied General Equilibrium Modelling: Applications, Limitations and Future Developments*, HMSO, London.

Greenwood, M.J., Hunt, G., Richman, D. and Treyz, G. (1991), "Migration, Regional Equilibrium, and the Estimation of Compensating Differentials", *American Economic Review*, vol. 81, pp. 1382-90.

Harrigan, F., McGregor, P., Perman, R., Swales, K and Yin, Y.P. (1991), "AMOS: A Macro-Micro Model of Scotland", *Economic Modelling*, vol. 8, pp. 424-479.

Harris, J. R. and Todaro, M. P. (1970), "Migration, Unemployment, and Development: A Two-Sector Analysis", *American Economic Review*, vol. 60, pp. 126-142.

1
2
3
4 Layard, R., Nickell, S. and Jackman, R. (1991), *Unemployment: Macroeconomic*
5 *Performance and the Labour Market*, Oxford University Press, Oxford.
6
7

8
9 Lisenkova, K., McGregor, P.G., Pappas, N., Swales, J.K., Turner, K. and Wright, R.
10 (2006) "Macro-Economic Impacts of Demographic Change in Scotland", Final Report
11 to ESRC, Grant Number RES-342-25-0002, Department of Economics, University of
12 Strathclyde, June 2006.
13
14

15
16
17
18 McGregor, P., and Swales, J.K. (2005) 'Economics of Devolution/Decentralization in
19 the UK: Some Questions and Answers' *Regional Studies*, vol. 39, pp. 477–494.
20
21

22
23
24 McGregor, P. G., Swales, J. K. and Yin, Y. P. (1995) "Input-Output Analysis and
25 Labour Scarcity: Aggregate Demand Disturbances in a "Flex-Price" Leontief
26 System", *Economic Systems Research*, vol. 7, pp. 189-208.
27
28

29
30
31 McGregor, P.G., Swales, J.K. and Yin, Y.P. (1996) "A Long-Run Interpretation of
32 Regional Input-Output Analysis", *Journal of Regional Science*, vol. 36, pp. 479-501.
33
34

35
36
37 McLean, I. and McMillan, A. (2003) "The Distribution of Public Expenditure across
38 the UK Regions", *Fiscal Studies*, vol. 24, pp. 45-71.
39
40

41
42
43 Minford, P., Stoney, P., Riley, J. and Webb, B. (1994), "An Econometric Model of
44 Merseyside: Validation and Policy Simulations", *Regional Studies*, vol. 28, pp. 563-
45 575.
46
47

48
49
50 Partridge, M.D. and Rickman D.S., (1998), 'Regional Computable General
51 Equilibrium Modelling: A Survey and Critical Appraisal', *International Regional*
52 *Science Review*, vol.21, pp. 205-248.
53
54

55
56
57 Simpson, L. (2005) *POPGROUP: User Guide with Worked Examples*, Cathie Marsh
58 Centre for Census and Survey Research, Manchester University, Manchester.
59
60

1
2
3
4 Sraffa, P. (1960) *Production of Commodities by Means of Commodities: Prelude to a*
5
6 *Critique of Economic Theory*, Cambridge University Press, Cambridge.
7
8

9
10 Treyz, G.I., Rickman, D.S., Hunt G.L. and Greenwood, M.J. (1993), "The Dynamics
11 of Internal Migration in the U.S.", *Review of Economics and Statistics*, vol. 75, pp.
12 209-214.
13
14

15
16
17
18
19
20
21
22
23
24
25
26
27
28
29
30
31
32
33
34
35
36
37
38
39
40
41
42
43
44
45
46
47
48
49
50
51
52
53
54
55
56
57
58
59
60

For Peer Review Only

Appendix 1: The Sectoral Disaggregation in AMOS

Table A1.1 Sectors (Activities/Commodities) Identified in AMOS

	Sector name	IOC codes	SIC
1	<i>Agriculture</i>	1	1
2	<i>Forestry and fishing</i>	2 & 3	2, 5.01 & 5.02
3	<i>Mining and quarrying</i>	4-7	10-14
4	<i>Mfr – food and food processing</i>	8-20	15 & 16
5	<i>Mfr - textiles and clothing</i>	21-30	17-19
6	<i>Mfr - chemicals, metals and non-metals</i>	36-61	24-28
7	<i>Mfr - other manufacturing</i>	31-35, 62-84	20-23, 29-37
8	<i>Electricity</i>	85	40.1
9	<i>Gas</i>	86	40.2 & 40.3
10	<i>Water</i>	87	41
11	<i>Construction</i>	88	45
12	<i>Wholesale and retail distribution</i>	89-91	50-52
13	<i>Hotels and restaurants</i>	92	55
14	<i>Transport</i>	93-97	60.1-63
15	<i>Communications</i>	98-99	64
16	<i>Banking and other financial services</i>	100-107	65-72
17	<i>Research and development</i>	108	73
18	<i>Legal, accountancy and other business services</i>	109-114	74
19	<i>Public administration</i>	115	75
20	<i>Education</i>	116	80
21	<i>Health</i>	117	85.1 & 85.2
22	<i>Social work</i>	118	85.3
23	<i>Sewage and refuse disposal</i>	119	90
24	<i>Recreational services</i>	121	92
25	<i>Other services</i>	120, 122 & 123	91, 93 & 95

Appendix 2: The AMOS Model

Table A2.1: A Condensed Version of the AMOS CGE Model

1. Commodity Price	$p_i = p_i(w_n, w_{k_i})$
2. Consumer Price Index	$cpi = \sum_i \theta_i p_i + \sum_i \theta_i^{UK} \bar{p}_i^{UK} + \sum_i \theta_i^{ROW} \bar{p}_i^{ROW}$
3. Capital Price Index	$kpi = \sum_i \gamma_i p_i + \sum_i \gamma_i^{UK} \bar{p}_i^{UK} + \sum_i \gamma_i^{ROW} \bar{p}_i^{ROW}$
4. User Cost of Capital	$uck = uck(kpi)$
5. Wage Equation	$w_n = w_n(N, \bar{L}, cpi)$
6. Capital Sock	$K_{i,t}^S = (1 - d_i) K_{i,t-1} + \Delta K_{i,t-1}$
7. Labour Demand	$N_i^D = N_i^D(Q_i, w_n, w_{k,i})$
8. Capital Demand	$K_i^D = K_i^D(Q_i, w_n, w_{k,i})$
9. Labour Market Clearing	$\sum_i N_i^D = N$
10. Capital Market Clearing	$K_i^S = K_i^D$
11. Household Income	$Y = \Psi_n N w_n + \Psi_k \sum_i K_i w_{k,i}$
12. Commodity Demand	$Q_i = C_i + I_i + G_i + X_i$
13. Consumption Demand	$C_i = C_i(p_i, \bar{p}_i^{UK}, \bar{p}_i^{ROW}, Y, cpi)$
14. Desired Capital Stock	$K_i^* = K_i^D(Q_i, w_n, uck)$
15. Capital Stock Adjustment	$\Delta K_i = \lambda_i (K_i^* - K_i)$
16. Investment Demand	$I_i = I_i(p_i, \bar{p}_i^{UK}, \bar{p}_i^{ROW}, \sum_i b_{i,j} \Delta K_j)$
17. Government Demand	$G_i = \phi_i p_i \bar{P}$
18. Export Demand	$X_i = X_i(p_i, \bar{p}_i^{UK}, \bar{p}_i^{ROW}, \bar{D}^{UK}, \bar{D}^{ROW})$

NOTATION***Activity-Commodities***

i, j are activity/commodity subscripts.

Transactors

UK = United Kingdom, ROW = Rest of World

Functions

$p(.)$ cost function

$w_n(.)$ wage equation

$uck(.)$ user cost of capital formulation

$K^D(.), N^D(.)$ factor demand functions

$C(.), I(.), X(.)$ Armington consumption, investment and export demand functions,
homogenous of degree zero in prices and one in quantities

Variables

C consumption

D exogenous export demand

G government demand for local goods

I investment demand for local goods

ΔK investment demand by activity

K^D, K^S, K^*, K capital demand, capital supply, desired and actual capital stock

L labour force

N^D, N labour demand and total employment

P population

Q commodity/activity output

X exports

Y household nominal income

b elements of capital matrix

cpi, kpi consumer and capital price indices

d physical depreciation

p price of commodity/activity output

t time subscript

uck user cost of capital

1		
2		
3		
4	w_n, w_k	wage, capital rental
5		
6	Ψ	share of factor income retained in region
7		
8	θ	cpi weights
9		
10	γ	kpi weights
11		
12	φ	government expenditure coefficient
13		
14	λ	capital stock adjustment parameter
15		

Notes:

Variables with a bar are exogenous.

A number of simplifications are made in this condensed presentation of AMOS

1. Intermediate demand is suppressed throughout e.g. only primary factor demands are noted in price determination in equation (1) and final demands in the determination of commodity demand in equation (12).
2. Income transfers are generally suppressed.
3. Taxes are ignored.
4. There are implicit time subscripts on all variables. These are only stated explicitly in the capital updating equation (6).