



**HAL**  
open science

## Species differences in pharmacokinetic and pharmacodynamic properties of nebicapone

Maria João Bonifácio, Ana I. Loureiro, Leonel Torrão, Carlos Fernandes-Lopes, Lyndon Wright, Maria João Pinho, Patrício Soares-Da-Silva

► **To cite this version:**

Maria João Bonifácio, Ana I. Loureiro, Leonel Torrão, Carlos Fernandes-Lopes, Lyndon Wright, et al.. Species differences in pharmacokinetic and pharmacodynamic properties of nebicapone. *Biochemical Pharmacology*, 2009, 78 (8), pp.1043. 10.1016/j.bcp.2009.05.036 . hal-00514596

**HAL Id: hal-00514596**

**<https://hal.science/hal-00514596>**

Submitted on 3 Sep 2010

**HAL** is a multi-disciplinary open access archive for the deposit and dissemination of scientific research documents, whether they are published or not. The documents may come from teaching and research institutions in France or abroad, or from public or private research centers.

L'archive ouverte pluridisciplinaire **HAL**, est destinée au dépôt et à la diffusion de documents scientifiques de niveau recherche, publiés ou non, émanant des établissements d'enseignement et de recherche français ou étrangers, des laboratoires publics ou privés.

## Accepted Manuscript

Title: Species differences in pharmacokinetic and pharmacodynamic properties of nebicapone

Authors: Maria João Bonifácio, Ana I. Loureiro, Leonel Torrão, Carlos Fernandes-Lopes, Lyndon Wright, Maria João Pinho, Patrício Soares-da-Silva



PII: S0006-2952(09)00446-8  
DOI: doi:10.1016/j.bcp.2009.05.036  
Reference: BCP 10207

To appear in: *BCP*

Received date: 10-3-2009  
Revised date: 27-5-2009  
Accepted date: 27-5-2009

Please cite this article as: Bonifácio MJ, Loureiro AI, Torrão L, Fernandes-Lopes C, Wright L, Pinho MJ, Soares-da-Silva P, Species differences in pharmacokinetic and pharmacodynamic properties of nebicapone, *Biochemical Pharmacology* (2008), doi:10.1016/j.bcp.2009.05.036

This is a PDF file of an unedited manuscript that has been accepted for publication. As a service to our customers we are providing this early version of the manuscript. The manuscript will undergo copyediting, typesetting, and review of the resulting proof before it is published in its final form. Please note that during the production process errors may be discovered which could affect the content, and all legal disclaimers that apply to the journal pertain.

1 **Species differences in pharmacokinetic and pharmacodynamic properties of**  
2  
3 **nebicapone**  
4

5  
6  
7  
8 Maria João Bonifácio<sup>a</sup>, Ana I. Loureiro<sup>a</sup>, Leonel Torrão<sup>a</sup>, Carlos Fernandes-Lopes<sup>a</sup>, Lyndon  
9 Wright<sup>a</sup>, Maria João Pinho<sup>b</sup>, Patrício Soares-da-Silva<sup>a,b\*</sup>  
10  
11  
12  
13  
14  
15

16 <sup>a</sup> Department of Research and Development, BIAL, 4745-457 S. Mamede do Coronado,  
17  
18 Portugal  
19

20  
21 <sup>b</sup> Institute of Pharmacology and Therapeutic, Faculty of Medicine, Porto, Portugal  
22  
23  
24  
25  
26  
27  
28  
29

30 Category: Pharmacokinetics and Drug Metabolism  
31  
32  
33  
34  
35  
36  
37  
38  
39  
40  
41  
42  
43  
44  
45

46 \*Corresponding author: Patrício Soares-da-Silva, Department of Research and Development,  
47 BIAL, 4745-457 S. Mamede do Coronado, Portugal, Phone: 351-22-9866100, Fax: 351-22-  
48 9866192, email: psoares.silva@bial.com  
49  
50  
51  
52  
53  
54  
55  
56  
57  
58  
59  
60  
61  
62  
63  
64  
65

**ABSTRACT**

The present study was designed to characterize pharmacodynamic and pharmacokinetic properties of nebicapone in rats and mice. Upon oral administration of nebicapone the extent of mouse liver catechol-O-methyltransferase (COMT) inhibition is half that in the rat.

Nebicapone was rapidly absorbed reaching plasma  $C_{max}$  within 30 min and being completely eliminated by 8 h. Nebicapone was metabolized mainly by glucuronidation and methylation in both species, but rat had an extra major metabolite, resulting from sulphation. Administration of nebicapone by the intraperitoneal route significantly increased compound AUC in the rat while in the mouse a significant increase in AUC of metabolites was observed. These results show that nebicapone exhibited marked species differences in bioavailability and metabolic profile. Evaluation of COMT activity in rat and mice liver homogenates revealed that both had similar methylation efficiencies ( $K_{cat}$  values, respectively 7.3 and 6.4  $\text{min}^{-1}$ ), but rat had twice active enzyme units as the mouse (molar equivalency respectively 150 and 83).

Furthermore, nebicapone inhibited rat liver COMT with a lower  $K_i$  than mouse liver COMT (respectively 0.2 versus 1.2 nM). In conclusion, the results from the present study show that mice and rats respond differently to COMT inhibition by nebicapone. The more pronounced inhibitory effects of nebicapone in the rat may be related to an enhanced oral availability and less pronounced metabolism of nebicapone in this specie, but also concerned with the predominant expression of S-COMT over MB-COMT, the latter of which is less sensitive to inhibition by nebicapone than the former.

**Keywords**

COMT, nebicapone, species differences, rat, mouse, kinetics, drug metabolism

## 1. Introduction

1  
2  
3  
4 Nebicapone (1-[3,4-dihydroxy-5-nitrophenyl]-2-phenyl-ethanone) is a catechol-O-  
5  
6 methyltransferase (COMT) tight-binding inhibitor [1] that is in development as an adjunct of  
7  
8 the L-3,4-dihydroxyphenylalanine (L-DOPA) plus peripheral aromatic L-amino acid  
9  
10 decarboxylase (AADC) inhibitor treatment of parkinsonian patients suffering from dyskinesias  
11  
12 and motor fluctuations [2-4]. The combination L-DOPA plus a peripheral AADC inhibitor is  
13  
14 efficacious in the replenishment of the dopaminergic deficiency, by supplying the dopamine  
15  
16 precursor and averting its metabolism by peripheral decarboxylation. However, the  
17  
18 proportion of L-DOPA reaching the brain is still about 5-10% of the orally administered dose.  
19  
20 Under these circumstances, the 3-O-methylation of L-DOPA becomes a predominant  
21  
22 elimination route, having a significant impact in the availability of L-DOPA to the brain,  
23  
24 indicating that inhibition of this metabolic route should prove beneficial for Parkinsonian  
25  
26 patients [5].  
27  
28  
29  
30

31  
32 COMT is the enzyme responsible for the methylation of L-DOPA. It catalyses the  
33  
34 transference of a methyl group from S-adenosyl-L-methionine (SAM) to catechol substrates,  
35  
36 playing an important role in the elimination of biologically active or toxic catechol-based  
37  
38 molecules such as catecholamines, their hydroxylated metabolites, catecholestrogens and  
39  
40 xenobiotic catechols [6]. The enzyme is ubiquitously expressed in animal tissues, existing  
41  
42 both as a soluble (S-COMT) and a membrane-bound (MB-COMT) form. Although the soluble  
43  
44 to membrane-bound isoform ratios differ among tissues, S-COMT usually predominates [7].  
45  
46

47  
48 Both isoforms share a similar primary structure with the membrane-bound form having an  
49  
50 extra peptide in its amino-terminal that contains the residues responsible for membrane  
51  
52 anchorage [8, 9]. Furthermore, both S-COMT and MB-COMT have similar active sites  
53  
54 sharing the same kinetic mechanism, with similar affinities for SAM, magnesium  
55  
56 dependency, inhibition by calcium and optimal pH for activity; however, MB-COMT has a  
57  
58 significantly higher affinity for catecholamines than S-COMT [10, 11].  
59  
60  
61  
62  
63  
64  
65

1 The administration of nebicapone to humans results in rapid and sustained inhibition of  
2 erythrocyte S-COMT, that recovers baseline levels of activity at 8-18 h post-dose [4, 12, 13].  
3  
4

5 The pharmacokinetics of the compound reveals a rapid absorption with maximum  
6 concentration in plasma reached within the first 2 h and apparent terminal elimination half-life  
7 between 2-4 h. Metabolic profiling in humans [14] showed that nebicapone is extensively  
8 metabolised, mainly by glucuronidation. It is also subject to methylation and although the 3-  
9 O-methyl-nebicapone (BIA 3-270) is present in human plasma in minor amounts it has a  
10 relatively long half-life. Metabolites resulting from sulphation and N-acetylation after nitro  
11 reduction were identified in residual amounts.  
12  
13  
14  
15  
16  
17  
18  
19  
20

21 Preliminary experiments suggested that nebicapone was more potent in inhibiting rat COMT  
22 than mouse COMT upon oral administration to rats and mice. The purpose of the present  
23 study was to explore possible causes for such behaviour. The pharmacokinetic profile of  
24 nebicapone was evaluated in rats and mice after oral and intraperitoneal administrations.  
25  
26 Kinetic properties of the MB- and S-COMT and their relative abundance were also evaluated  
27 in rat and mouse liver preparations.  
28  
29  
30  
31  
32  
33  
34  
35  
36  
37  
38  
39  
40  
41  
42  
43  
44  
45  
46  
47  
48  
49  
50  
51  
52  
53  
54  
55  
56  
57  
58  
59  
60  
61  
62  
63  
64  
65

## 2. Materials and methods

### 2.1. Reagents

Nebicapone (1-[3,4-dihydroxy-5-nitrophenyl]-2-phenyl-ethanone), its metabolites nebicapone glucuronide (BIA 3-476; 1-(3-O- $\beta$ -D-glucopyranuronosido-4-hydroxy-5-nitrophenyl)-2-phenyl-ethanone), nebicapone sulphate (BIA 3-465; pyridinium-1-(4-hydroxy-5-nitro-3-O-sulphatophenyl)-2-phenyl-ethanone; prepared as a pyridinium salt), 3-O-methyl-nebicapone (BIA 3-270; 1-(4-hydroxy-3-methoxy-5-nitrophenyl)-2-phenyl-ethanone) and tolcapone (used as internal standard) were synthesized in the Laboratory of Chemistry, Department of Research and Development, BIAL (S. Mamede do Coronado, Portugal), with purities >99.5%. S-adenosyl-L-methionine, DL-metanephrine hydrochloride and L-adrenaline bitartrate were purchased from Sigma-Aldrich (St Louis, MO). Acetonitrile, dibutylamine and perchloric acid were from Merck KgaA (Darmstadt, Germany) and methanol was purchased Mallinckrodt Baker (Deventer, The Netherlands). All other reagents were from Sigma-Aldrich (St Louis, MO).

### 2.2. Animals

Adult male Wistar rats and NMRI mice, supplied by Harlan (Barcelona, Spain) were kept 5 per cage under controlled environmental conditions (12 h light/dark cycle, room temperature  $22\pm 1$  °C and humidity  $50\pm 5$  %, food and tap water ad libitum). Rats weighed 200-250 g and mice weighed 24-40 g. All animal procedures were conducted in the strict adherence to the European Directive for Protection of Vertebrate Animals Used for Experimental and Other Scientific Purposes (86/609CEE), Portuguese legislation and the rules of the "Guide for the Care and Use of Laboratory Animals" 7<sup>th</sup> edition, 1996, Institute for Laboratory Animal Research, Washington, DC. The number of animals used was the minimum possible in compliance with current regulations and scientific integrity.

### 2.3. Animal treatments

1 Animals were fasted the night before administration. Nebicapone (12 mg/kg) was either given  
2 orally (p.o.) as a suspension in carboxymethylcellulose (0.5 % w/v; 4 ml/kg) or  
3 intraperitoneally (i.p.) as a solution in dimethyl sulfoxide (DMSO, 2 ml/kg). Anaesthesia was  
4 performed by i.p. administration of sodium pentobarbital (60 mg/kg). Blank plasma was  
5 obtained from animals not subject to any treatment.  
6  
7  
8  
9  
10

### 11 **2.3.1. Evaluation of nebicapone pharmacokinetics**

12 In the experiments designed for pharmacokinetic evaluation of nebicapone, rats and mice  
13 were administered with nebicapone (12 mg/kg), either p.o. or i.p., and blood samples were  
14 collected from anaesthetized animals at various times after dosing ( $\frac{1}{2}$ , 1, 2, 4, 8, 16, and 24  
15 h). Five animals were used for each time point: blood was collected from the vena cava with  
16 heparinised syringes and kept on ice until centrifuged at 1,500 g for 10 min at 4 °C. Plasma  
17 was stored at less than -20 °C until analysis.  
18  
19  
20  
21  
22  
23  
24  
25  
26  
27

### 28 **2.3.2. Evaluation of COMT inhibition**

29 In the experiments designed to evaluate the inhibition of COMT in vivo, mice were  
30 administered nebicapone p.o. (30 mg/kg for time dependency or 0.3, 1, 3, 10, 30, 60, and  
31 100 mg/kg for ED<sub>50</sub> determination) and then, either at defined intervals (0.5, 1, 3, 6 and 9 h)  
32 for time dependency or at 1 h for ED<sub>50</sub> determination, animals were anaesthetized and  
33 perfused through left ventricle with 0.9 % sodium chloride. Liver fragments were removed  
34 and frozen at -80 °C in sodium phosphate buffer (5 mM, pH 7.8). Homogenized tissues (Diox  
35 homogenizer, Heidolph GmbH & Co.KG, Schwabach, Germany) were used for the COMT  
36 activity determination.  
37  
38  
39  
40  
41  
42  
43  
44  
45  
46  
47  
48  
49

### 50 **2.4. Preparation of COMT fractions**

51 The soluble fraction of COMT was obtained as previously described [15, 16]. In brief, crude  
52 homogenates prepared as described above (total-COMT) were centrifuged at 15,000 g for 20  
53 min at 4°C. The supernatants were then centrifuged at 100,000 g for 60 min at 4°C. The  
54  
55  
56  
57  
58  
59  
60  
61  
62  
63  
64  
65



1 high-speed supernatants were used as soluble COMT (S-COMT) and the pellets were  
2 washed and centrifuged again in the same conditions. The final pellets were resuspended in  
3 sodium phosphate buffer (5 mM, pH 7.8) and used as membrane-bound COMT (MB-COMT).  
4  
5 The protein content in the samples was determined using a protein assay kit (Bio-Rad  
6 Laboratories, Hercules, CA), with bovine serum albumin as standard (50-250 µg/ml).  
7

## 8 **2.5. COMT assay**

9  
10 COMT activity was evaluated by measuring metanephrine, the product of adrenaline  
11 methylation, as previously described [16]. In brief, reaction mixture contained homogenate (4  
12 mg/ml), 100 µM MgCl<sub>2</sub>, 1 mM EGTA, 100 µM pargyline and either 500 µM (rat) or 250 µM  
13 (mouse) S-adenosyl-L-methionine in phosphate buffer (5 mM, pH 7.8). Reactions were  
14 initiated with adrenaline and proceeded for either 5 min (rat) or 10 min (mouse) at 37 °C.  
15 Reactions were terminated with the addition of 1/10 volume 2 M perchloric acid. Samples  
16 were centrifuged (16,000 g for 3 min at 4°C) and filtered through 0.22 µm pore size Costar  
17 Spin-X 200 filters (Corning Inc., Corning, NY). Metanephrine was then quantified by HPLC  
18 with electrochemical detection as previously detailed [16].  
19

20 For K<sub>m</sub> determinations, liver homogenates (4 mg/ml) were incubated with either 0.5-1500 µM  
21 (rat) or 0.5-100 µM (mouse) adrenaline. In the experiments designed to evaluate the  
22 methylation efficiency of the enzymes and inhibitor sensitivity, rat and mice liver  
23 homogenates (0.4-2 mg/ml protein) were incubated with either 1000 µM (rat) or 50 µM  
24 (mouse) adrenaline.  
25

## 26 **2.6. Extraction and quantification of nebicapone and metabolites from plasma**

27 Nebicapone and metabolites were quantified in plasma samples as described before [14]. In  
28 brief, plasma samples were extracted along with an internal standard (tolcapone, 400 ng/ml)  
29 by solid phase extraction using Oasis HLB cartridges (30 mg, 1 ml, Waters, ). The eluted  
30 samples were analysed by LC-(AP-ESI) MS (HP 1100 Series, Agilent Technologies, Santa  
31 Clara, CA) with negative ion detection. Separation was performed on a Zorbax SB-C<sub>18</sub>, 3 µm,  
32  
33  
34  
35  
36  
37  
38  
39  
40  
41  
42  
43  
44  
45  
46  
47  
48  
49  
50  
51  
52  
53  
54  
55  
56  
57  
58  
59  
60  
61  
62  
63  
64  
65

1 30 x 4.6 mm, column (Agilent Technologies) using a mobile of water: 1 % formic acid (v:v)  
2 and acetonitrile:1 % formic acid (v:v). Selected ion monitoring (SIM) with the detection of  
3 each compound of interest was used for quantification. The method was validated in  
4 accordance with FDA guidance for industry. The limits of quantification were 61.4 ng/ml for  
5 BIA 3-476 and 40.9 ng/ml for BIA 3-465, nebicapone and 3-O-methyl-nebicapone. The intra-  
6 and inter-batch coefficient of variation (CV) and accuracy were within 15.0 % of the actual  
7 value for all the analytes and in all concentrations checked.  
8  
9

## 10 **2.7. COMT immunoblotting**

11 SDS-PAGE and Western blot analysis was performed according to a standard procedure of  
12 the laboratory [17]. In brief, rat and mouse liver tissues were homogenized (Diach  
13 homogenizer, Heidolph GmbH & Co.KG, Schwabach, Germany) in RIPA buffer containing  
14 150 mM NaCl, 50 mM Tris-HCl, pH 7.4, 5 mM EDTA, 1 % Triton X-100, 0.5 % sodium  
15 deoxycholate, 0.1 % SDS, 100 µg/ml PMSF, 2 µg/ml leupeptin and 2 µg/ml aprotinin. Protein  
16 concentration was determined using a protein assay kit (Bio-Rad Laboratories, Hercules,  
17 CA), with bovine serum albumin as standard. Samples containing 30 µg of protein were  
18 separated by SDS-PAGE with 10 % polyacrylamide gel and then electroblotted onto  
19 nitrocellulose membranes (Bio-Rad Laboratories, Hercules, CA ). Blots were blocked for 1 h  
20 with 5 % non-fat dry milk in PBS (10 mM phosphate-buffered saline) at room temperature  
21 with constant shaking. Blots were probed overnight at 4 °C, in 5 % non-fat dry milk in PBS-T  
22 with a primary rabbit anti-COMT antibody (1:2000) obtained in-house. This antibody was  
23 raised against recombinant rat S-COMT [15] and it was further purified by affinity  
24 chromatography on a rat S-COMT HiTrap column. It displays cross-reactivity towards human  
25 [18] and mouse COMT. The immunoblots were subsequently washed and incubated with a  
26 fluorescently-labeled secondary antibody (1:1.000; IRDye<sup>Tm</sup> 800, Rockland  
27 Immunochemicals, Gilbertsville, PA) for 60 min at room temperature and protected from light.  
28 The membrane was washed and imaged by scanning at both 700 nm and 800 nm, with an  
29  
30  
31  
32  
33  
34  
35  
36  
37  
38  
39  
40  
41  
42  
43  
44  
45  
46  
47  
48  
49  
50  
51  
52  
53  
54  
55  
56  
57  
58  
59  
60  
61  
62  
63  
64  
65

Odyssey Infrared Imaging System (LI-COR Biosciences, Lincoln, NE) and band intensities were quantified with the Odyssey v2.0 software. The relative abundance of MB- and S-COMT isoforms was then calculated as the percentage of the sum of both isoforms intensities.

## 2.8. Data analysis

All data analysis was performed using GraphPad Prism software, version 4.0 (GraphPad Software Inc., San Diego, CA). The pharmacokinetic parameters of nebicapone and its metabolites were calculated from plasma concentration-time profiles and statistical significance was evaluated by two-tailed Student's t test. ED<sub>50</sub> value was determined by fitting experimental data to the sigmoidal-dose response curve (variable slope) with top and bottom fixed to 100 and zero respectively. K<sub>m</sub> and V<sub>max</sub> values were calculated from non-linear regression analysis using the Michaelis-Menten equation. The catalytic number (K<sub>cat</sub>), molar equivalency (ε), and inhibition constant (K<sub>i</sub>) for nebicapone were obtained from non-linear regression analysis of the experimental values fitted to the equation [19, 20]:

$$v = \frac{K_{cat}S}{2(K_m + S)} \left[ (\varepsilon E - K_i^* - I) + \sqrt{(K_i^* + I + \varepsilon E)^2 - 4I\varepsilon E} \right] \quad (\text{Equation 1})$$

where E is the total enzyme concentration; ε represents the fraction of E that is active, thus the molar equivalency; I is the total inhibitor concentration; K<sub>cat</sub> is the catalytic number, and K<sub>i</sub>\* is a constant that is related to the K<sub>i</sub> by the equation K<sub>i</sub>\*=K<sub>i</sub>.(1+S/K<sub>m</sub>) being S the substrate concentration.

## 3. Results

### 3.1. Rat and mouse liver COMT inhibition by nebicapone

1 The in vivo inhibitory profile of nebicapone evaluated in rat and mice liver homogenates is  
2 shown in Figure 1. The maximal inhibitory effect obtained with 30 mg/kg nebicapone in both  
3 species was observed within 0.5 h after its administration (Figure 1A). In the mouse an  
4 almost complete recovery of enzyme activity to baseline values was found to occur at 9 h  
5 post dose, whereas in the rat recovery in enzyme activity at this time point achieved only  
6 25% of baseline values. At 1 h post dose, the ED<sub>50</sub> calculated from the dose response curves  
7 (Figure 1 B) was found to be 0.8 (0.5; 1.2) and 27.4 (23.1; 32.5) mg/kg in the rat and mouse,  
8 respectively.  
9

### 19 3.2. Metabolism and elimination of nebicapone after oral administration

22 The metabolic profile and the elimination rate of nebicapone in rat and mouse plasma after  
23 oral administration of a dose of 12 mg/kg is shown in Figure 2. The pharmacokinetic  
24 parameters derived from these curves are shown in Table 1. Maximal plasma concentration  
25 ( $C_{max}$ ) values of nebicapone, following oral administration in both rat and mouse, were  
26 reached within 30 min and returned to baseline levels at 8 h. After oral administration,  
27 unchanged nebicapone represented about 11 % and 6% of the total nebicapone and  
28 metabolites area under the curve (AUC<sub>0-24</sub>) in rat and mouse, respectively. In the rat, the  
29 major metabolite of nebicapone was 3-O-methyl nebicapone (BIA 3-270), which accounted  
30 for 57 % of the total nebicapone and metabolites AUC<sub>0-24</sub>. In the mouse, by contrast, the  
31 major metabolite of nebicapone was the 3-O- $\beta$ -glucuronic acid derivative (BIA 3-476) which  
32 accounted for 64 % of the total nebicapone and metabolites AUC<sub>0-24</sub>. Another difference in  
33 the metabolism of nebicapone between species concerned the formation of nebicapone  
34 sulphate (BIA 3-465), a metabolite that was not found in mice. Irrespective of differences in  
35 the pattern of nebicapone metabolism, a major finding is that total exposure to nebicapone  
36 and metabolites (using AUC<sub>0-24</sub>) in the rat was twice that in the mouse (117.8 vs 53.3  
37 h. $\mu$ g/ml). In addition, nebicapone  $C_{max}$  values were 13.1 and 3.1  $\mu$ g/ml after p.o.  
38 administration in the rat and mouse, respectively.  
39  
40  
41  
42  
43  
44  
45  
46  
47  
48  
49  
50  
51  
52  
53  
54  
55  
56  
57  
58  
59  
60  
61  
62  
63  
64  
65

### 3.3. Metabolism and elimination of nebicapone after intraperitoneal administration

The data described above indicated marked differences in the metabolism of nebicapone between rat and mouse and suggests that oral bioavailability of nebicapone may be greater in the rat than in the mouse. In order to clarify this issue a series of experiments were performed with nebicapone being administered intraperitoneally (i.p.), to overcome differences in gastrointestinal absorption. The metabolic profile and the elimination rate of nebicapone in rat plasma after i.p. administration of 12 mg/kg nebicapone are shown in Figure 3. The pharmacokinetic parameters derived from these curves are shown in Table 1. The plasma level versus time profile of nebicapone and nebicapone metabolites after i.p. administration in both rats and mice was similar to that observed after oral administration of nebicapone. After i.p. administration, unchanged nebicapone represented about 20 % and 2 % of the total nebicapone and metabolites  $AUC_{0-24}$  in rat and mouse, respectively. Again, the major metabolite of nebicapone in the rat was 3-O-methyl nebicapone (BIA 3-270), which accounted for 49 % of the total nebicapone and metabolites  $AUC_{0-24}$ . The major metabolite of nebicapone in the mouse was the 3-O- $\beta$ -glucuronic acid derivative (BIA 3-476) which accounted for 82 % of the total nebicapone and metabolites  $AUC_{0-24}$ . Similarly to that described in the previous section, nebicapone sulphate (BIA 3-465) after i.p. administration of nebicapone was not found detectable in mice. Contrariwise to that observed after oral administration of nebicapone, total exposure to nebicapone and metabolites (using  $AUC_{0-24}$ ) after i.p. administration was found to be similar in the rat and in the mouse (132.9 vs 172.2 h. $\mu$ g/ml). This suggests that differences in exposure observed after oral administration also relate to differences in the extent of gastrointestinal absorption of nebicapone in rat and mouse.

### 3.4. Kinetics of rat and mouse COMT

1 The kinetic behaviour of COMT in rat and mouse liver homogenates was evaluated towards  
2 a standard substrate, adrenaline. The saturation curves obtained for mouse and rat liver  
3 homogenates are shown in Figure 4 and the kinetic parameters derived from these curves  
4 are given in Table 2. Mouse COMT has a higher affinity for the substrate adrenaline than rat  
5 COMT ( $K_m = 5.0$  vs  $267.0$   $\mu\text{M}$ , respectively), but showed a lower O-methylation capacity  
6 ( $V_{\text{max}} = 25.7$  vs  $93.8$   $\text{nmol/mg protein/h}$ , respectively).

### 14 3.5. Kinetics of COMT inhibition by nebicapone

17 COMT activity was measured in rat and mouse preparations homogenates (total COMT),  
18 soluble fraction (S-COMT) and membrane-bound fraction (MB-COMT) at several protein  
19 concentrations and inhibitor concentrations with a saturating concentration of substrate. The  
20 steady-state rates obtained were plotted against protein concentration (Ackermann-Potter  
21 plots) giving rise to the asymptotic concave curves represented in Figure 5 for total COMT,  
22 which are characteristic of tight-binding inhibitors. The kinetic parameters  $\varepsilon$ ,  $K_{\text{cat}}$  and  $K_i^*$   
23 derived from non linear regression analysis of experimental data together with the true  $K_i$   
24 value are shown in Table 3. Rat and mouse COMT share the same catalytic efficiency  
25 irrespectively of the preparation tested ( $K_{\text{cat}} = 5.6$  and  $8.6$   $\text{min}^{-1}$ , respectively), but the mouse  
26 total-COMT was found to be endowed with half of the active enzyme units as compared to  
27 the rat total COMT ( $\varepsilon = 83$  vs  $150$ , respectively). In what concerns the potency of  
28 nebicapone, the inhibition constant obtained for rat S-COMT was identical to that obtained  
29 for mouse S-COMT ( $K_i = 0.14$   $\text{nM}$  for both preparations). However, the inhibition constant  
30 obtained for rat MB-COMT and total-COMT ( $K_i = 0.04$  and  $0.2$   $\text{nM}$ , respectively) was lower  
31 than that obtained for the mouse MB-COMT and total-COMT ( $K_i = 2.55$  and  $1.18$   $\text{nM}$   
32 respectively).

### 54 3.6. COMT expression

1 The relative abundance of MB- and S-COMT, evaluated by immunoblot analysis using a  
2 polyclonal rabbit anti-COMT antibody, was calculated as the percentage of total COMT in rat  
3 and mouse liver homogenates. In rat liver homogenates the abundance of S-COMT was 30-  
4 fold that of MB-COMT, while in mouse liver homogenates the abundance of S-COMT was  
5 slightly lower than MB-COMT (Figure 6).  
6  
7  
8  
9  
10  
11  
12  
13  
14  
15  
16  
17  
18  
19  
20  
21  
22  
23  
24  
25  
26  
27  
28  
29  
30  
31  
32  
33  
34  
35  
36  
37  
38  
39  
40  
41  
42  
43  
44  
45  
46  
47  
48  
49  
50  
51  
52  
53  
54  
55  
56  
57  
58  
59  
60  
61  
62  
63  
64  
65

#### 4. Discussion

Evaluation of nebicapone pharmacodynamic properties, namely inhibition of peripheral COMT over time and over a range of doses, revealed fundamental differences between the two species. Nebicapone markedly inhibited rat liver COMT activity at 30 min after administration and having still about 75 % of the enzyme inhibited at 9 h. Under similar experimental conditions, mouse requires a 30-fold higher dose of nebicapone to achieve the same level of enzyme inhibition and the inhibitory effect was of shorter duration. While the mouse enzyme recovers to baseline values at 9 h, the rat enzyme recovered only at 24 h.

The analysis of the pharmacokinetic profile of nebicapone and elimination rate in both species contributes for the differences observed in the pharmacodynamic properties of nebicapone in rats and mice.

When comparing the metabolic pathways of nebicapone in the mouse and rat it can be concluded that the major metabolic pathway is phase II conjugation in the meta position to the nitro group of the catechol structure, which is similar to that observed in humans [14]. However, while in the mouse, similarly to what occurs in humans, the major metabolites were found to be the glucuronide and methylated derivatives, in the rat nebicapone sulphate is a major metabolite together with nebicapone glucuronide and 3-O-methyl-nebicapone. The metabolic pathways of nebicapone appear to be similar to those of other nitrocatechol inhibitors, such as entacapone and tolcapone, which primarily involve glucuronidation [21, 22]. Catechols are metabolized by oxidative and conjugation reactions, with nitrocatechols being glucuronidated at lower rates than other catechols.

In addition to the different metabolic profile of nebicapone in the rat and mouse, the plasma bioavailability of nebicapone was also significantly different as evaluated after oral and i.p. administrations. A significant increase in the  $C_{max}$  of nebicapone and the corresponding glucuronide was observed in rat plasma after i.p. administration, but only the nebicapone AUC was significantly increased. In mice, on the other hand, after i.p. administration there



1 was a significant increase in  $C_{max}$  values for nebicapone and metabolites, together with a  
2  
3 significant increase in AUC values for the metabolites, but not for the parent compound.  
4

5  
6 In fact, glucuronidation of nebicapone in the mouse (both after p.o. and i.p. administration)  
7  
8 accounts for 64% to 82%, respectively, of nebicapone metabolism, assuming  $AUC_{0-24}$  levels  
9  
10 which contrasts with that in the rat, in which nebicapone glucuronide levels account for 10%  
11  
12 and 13% of nebicapone metabolism (respectively after p.o. and i.p. administration). Mice do  
13  
14 not sulphate nebicapone, whereas in the rat nebicapone sulphate accounts for 18% to 20%  
15  
16 of nebicapone metabolism. Finally the O-methylation of nebicapone in the mouse, in  
17  
18 opposition to nebicapone glucuronidation, accounts for approximately half of that observed in  
19  
20 the rat.  
21  
22

23  
24 Among phase II metabolism glucuronidation and sulphation represent the two most prevalent  
25  
26 pathways, with UDP-glucuronosyltransferases and sulfotransferases often competing for the  
27  
28 same substrates. The competition between the different conjugation reactions depends not  
29  
30 only upon kinetics of the respective enzymes, subcellular localization and respective  
31  
32 expression levels [23] but also on the available levels of co-factors [24]. Large differences  
33  
34 between rat and mice on nebicapone glucuronidation are not unexpected, since species,  
35  
36 strain and sex-differences of glucuronidation activities have been described for these species  
37  
38 [25]. These differences probably result from variation in the UGT gene family such as the  
39  
40 number of first exons and pseudogenes [26]. Differences between species concerning the  
41  
42 metabolism of nitrocatechol derivatives have also been described for entacapone. Sulphated  
43  
44 conjugates of entacapone and its metabolites were found in dog and rat urine, but only  
45  
46 traces in human urine [27]. The complete lack of nebicapone sulphation in the mouse may  
47  
48 reflect a low affinity of mouse sulfotransferase enzymes towards nebicapone.  
49  
50  
51

52  
53 Methylation, as a nebicapone elimination pathway, was more extensive in the rat than in  
54  
55 mouse; the pharmacokinetics properties of the methylated derivatives, namely  $t_{max}$ , were  
56  
57 quite different from the other phase II metabolites such as the glucuronides and sulphates.  
58  
59  
60  
61  
62  
63  
64  
65

1 Methylated nebicapone is a long living metabolite with a late  $t_{max}$  (4-8 h in both species as  
2 compared to 0.5-1 h of glucuronides and sulphates). This most probably reflects the  
3 inhibitory nature of nebicapone towards COMT. Nebicapone, although it is a substrate for  
4 COMT it should be a poor substrate due to the electronegativity of the nitro group, similarly to  
5 what was found for other nitrocatechols [28].  
6  
7  
8  
9  
10

11  
12 The fact that in mice, but not in rat, there is an increase in the AUC of nebicapone  
13 metabolites, particularly of the glucuronide suggests that the extent of nebicapone  
14 metabolism in the mouse is greater than that in the rat. This, however, does not exclude  
15 potential differences in excretion rates in the two species.  
16  
17  
18  
19  
20  
21

22 The results reported here, may also suggest that the extent of absorption of nebicapone in  
23 the mouse may be lower than that in the rat. In fact, major differences between rat and  
24 mouse on the total exposure of nebicapone and metabolites (using  $AUC_{0-24}$ ) were observed  
25 after oral administration, but not after i.p. administration of nebicapone. Oral versus i.p.  
26 administration is not the best approach for evaluating the absorption process since it does  
27 not avoid first pass metabolism, though allows bypassing intestinal absorption. Ideally  
28 intravenous administration should be used, since it discriminates between metabolic  
29 pathways and first pass metabolism. However, this is not possible with nebicapone given its  
30 low solubility in water and DMSO toxicity limits the amount of nebicapone that can be  
31 administered.  
32  
33  
34  
35  
36  
37  
38  
39  
40  
41  
42  
43  
44

45 In parallel to the pharmacokinetic studies, the kinetic properties of the interaction of mouse  
46 and rat COMT with nebicapone were studied using crude liver preparations. Nebicapone is a  
47 COMT tight-binding inhibitor [16], which means that it inhibits the enzyme at concentrations  
48 comparable to those of the enzyme; thus, the classical kinetic approaches can not be used.  
49  
50  
51  
52  
53  
54  
55  
56  
57  
58  
59  
60  
61  
62  
63  
64  
65

1 enzyme [19, 20]. The  $K_i$  value obtained for nebicapone in rat liver COMT was similar to that  
2  
3 previously reported for rat S-COMT [19, 20] and it was lower than obtained for mouse COMT  
4  
5 (0.2 and 1.2 nM, respectively), indicating a species difference in the interaction of the  
6  
7 inhibitor with the enzyme. Regarding the amounts of enzyme present in the rat and mouse  
8  
9 preparations, the rat had almost twice the active enzyme units of the mouse, as shown by  
10  
11 differences in molar equivalency values (150 and 83, respectively), which correlates with the  
12  
13 differences in O-methylation of nebicapone in both species. The efficiency of the methylation  
14  
15 reaction, however, was identical in both species, as revealed by identical  $K_{cat}$  values, which  
16  
17 were similar to previously reported values for rat S-COMT [16].  
18  
19

20  
21 The rate of O-methylation determined in this type of preparations results from a mixture of  
22  
23 the S-COMT and MB-COMT activities, with a larger contribution by S-COMT. This isoform  
24  
25 dominates over the MB-COMT in peripheral rat and human tissues, with the exception of  
26  
27 adrenals and pheochromocytomas [7, 29, 30]. The analysis of adrenaline O-methylation  
28  
29 kinetics in mouse and rat liver homogenates showed that the  $K_m$  value obtained for the rat  
30  
31 COMT was in agreement with the values described in the literature for the methylation of  
32  
33 catecholamines by S-COMT. However, the  $K_m$  value obtained for the mouse COMT was  
34  
35 within the range of values described for MB-COMT [10, 29, 30]. Actually, the affinities of  
36  
37 adrenaline O-methylation by mouse liver S-COMT and MB-COMT were found to be,  
38  
39 respectively, 242 and 12  $\mu$ M [7]. These results suggest that, in the mouse liver, MB-COMT  
40  
41 dominates over S-COMT in opposition to what occurs in rats and humans. The western blot  
42  
43 analysis of COMT expression in mouse and rat liver homogenates (Figure 6) further supports  
44  
45 this hypothesis, although differences in the affinity of the antibody used towards the rat and  
46  
47 mouse COMT isoforms cannot be excluded. Rat S-COMT is about 30-fold more abundant  
48  
49 than rat MB-COMT, while mouse S-COMT is about 0.8-fold mouse MB-COMT. The reason  
50  
51 for this to occur is not apparent. In humans and rats there are two promoters that direct the  
52  
53 synthesis of two COMT transcripts; a longer one constitutively expressed that translates MB-  
54  
55  
56  
57  
58  
59  
60  
61  
62  
63  
64  
65

1 COMT and S-COMT by the leaky scanning mechanism of translational initiation, and a  
2  
3 shorter one that is subject to tissue-specific transcription regulation and translates only S-  
4  
5 COMT [31, 32]. The mechanisms of transcriptional/translational regulation in the mouse have  
6  
7 not yet been described but should be different from those described for rats and humans.  
8  
9

10 In conclusion, the results from the present study show that mice and rats respond differently  
11  
12 to COMT inhibition by nebicapone. The more pronounced inhibitory effects of nebicapone in  
13  
14 the rat may be related to an enhanced oral availability and less pronounced metabolism of  
15  
16 nebicapone in this specie, but also concerned with the predominant expression of S-COMT  
17  
18 over MB-COMT, the latter of which is less sensitive to inhibition by nebicapone than the  
19  
20 former.  
21  
22  
23  
24  
25  
26

## 27 **5. Acknowledgements**

28  
29 The present study was supported by BIAL – Portela & C<sup>a</sup>, S.A.  
30  
31  
32  
33  
34  
35  
36  
37  
38  
39  
40  
41  
42  
43  
44  
45  
46  
47  
48  
49  
50  
51  
52  
53  
54  
55  
56  
57  
58  
59  
60  
61  
62  
63  
64  
65

## 6. References

- [1] Learmonth DA, Vieira-Coelho MA, Benes J, Alves PC, Borges N, Freitas AP, et al. Synthesis of 1-(3,4-dihydroxy-5-nitrophenyl)-2-phenyl-ethanone and derivatives as potent and long-acting peripheral inhibitors of catechol-O-methyltransferase. *J Med Chem* 2002;45:685-95.
- [2] Almeida L, Vaz-da-Silva M, Silveira P, Falcao A, Maia J, Loureiro A, et al. Pharmacokinetic-pharmacodynamic interaction between BIA 3-202, a novel COMT inhibitor, and levodopa/carbidopa. *Clin Neuropharmacol* 2004;27:17-24.
- [3] Ferreira JJ, Almeida L, Cunha L, Ticmeanu M, Rosa MM, Januario C, et al. Effects of nebicapone on levodopa pharmacokinetics, catechol-O-methyltransferase activity, and motor fluctuations in patients with Parkinson disease. *Clin Neuropharmacol* 2008;31:2-18.
- [4] Silveira P, Vaz-Da-Silva M, Almeida L, Maia J, Falcao A, Loureiro A, et al. Pharmacokinetic-pharmacodynamic interaction between BIA 3-202, a novel COMT inhibitor, and levodopa/benserazide. *Eur J Clin Pharmacol* 2003;59:603-9.
- [5] Männistö PT, Kaakkola S. Rationale for selective COMT inhibitors as adjuncts in the drug treatment of Parkinson's disease. *Pharmacol Toxicol* 1990;66:317-23.
- [6] Guldberg HC, Marsden CA. Catechol-O-methyl transferase: pharmacological aspects and physiological role. *Pharmacol Rev* 1975;27:135-206.
- [7] Bonifacio MJ, Palma PN, Almeida L, Soares-da-Silva P. Catechol-O-methyltransferase and its inhibitors in Parkinson's disease. *CNS Drug Rev* 2007;13:352-79.
- [8] Mannisto PT, Kaakkola S. Catechol-O-methyltransferase (COMT): biochemistry, molecular biology, pharmacology, and clinical efficacy of the new selective COMT inhibitors. *Pharmacol Rev* 1999;51:593-628.

- 1 [9] Ulmanen I, Lundstrom K. Cell-free synthesis of rat and human catechol O-  
2 methyltransferase. Insertion of the membrane-bound form into microsomal  
3 membranes in vitro. *Eur J Biochem* 1991;202:1013-20.  
4  
5  
6  
7 [10] Lotta T, Vidgren J, Tilgmann C, Ulmanen I, Melen K, Julkunen I, et al. Kinetics of  
8 human soluble and membrane-bound catechol O- methyltransferase: a revised  
9 mechanism and description of the thermolabile variant of the enzyme. *Biochemistry*  
10 1995;34:4202-10.  
11  
12  
13  
14 [11] Tsunoda M, Takezawa K, Masuda M, Imai K. Rat liver and kidney catechol-O-  
15 methyltransferase activity measured by high-performance liquid chromatography with  
16 fluorescence detection. *Biomed Chromatogr* 2002;16:536-41.  
17  
18  
19 [12] Almeida L, Soares-Da-Silva P. Pharmacokinetics and Pharmacodynamics of BIA 3-  
20 202, a Novel COMT Inhibitor, during First Administration to Humans. *Drugs R&D*  
21 2003;4:207-17.  
22  
23 [13] Almeida L, Soares-da-Silva P. Pharmacokinetic and pharmacodynamic profiles of BIA  
24 3-202, a novel catechol-O-methyltransferase (COMT) inhibitor, during multiple-dose  
25 administration to healthy subjects. *J Clin Pharmacol* 2003;43:1350-60.  
26  
27 [14] Loureiro AI, Bonifacio MJ, Fernandes-Lopes C, Almeida L, Wright LC, Soares-Da-  
28 Silva P. Human metabolism of nebicapone (BIA 3-202), a novel catechol-o-  
29 methyltransferase inhibitor: characterization of in vitro glucuronidation. *Drug*  
30 *metabolism and disposition: the biological fate of chemicals* 2006;34:1856-62.  
31  
32 [15] Bonifacio MJ, Vieira-Coelho MA, Soares-da-Silva P. Expression and characterization  
33 of rat soluble catechol-O-methyltransferase fusion protein. *Protein Expr Purif*  
34 2001;23:106-12.  
35  
36 [16] Bonifacio MJ, Vieira-Coelho MA, Soares-da-Silva P. Kinetic inhibitory profile of BIA 3-  
37 202, a novel fast tight-binding, reversible and competitive catechol-O-  
38 methyltransferase inhibitor. *Eur J Pharmacol* 2003;460:163-70.  
39  
40  
41  
42  
43  
44  
45  
46  
47  
48  
49  
50  
51  
52  
53  
54  
55  
56  
57  
58  
59  
60  
61  
62  
63  
64  
65

- 1 [17] Pinho MJ, Pinto V, Serrao MP, Jose PA, Soares-da-Silva P. Underexpression of the  
2 Na<sup>+</sup>-dependent neutral amino acid transporter ASCT2 in the spontaneously  
3 hypertensive rat kidney. *Am J Physiol Regul Integr Comp Physiol* 2007;293:R538-47.  
4  
5  
6  
7 [18] Passarinha LA, Bonifacio MJ, Queiroz JA. Comparative study on the interaction of  
8 recombinant human soluble catechol-O-methyltransferase on some hydrophobic  
9 adsorbents. *Biomed Chromatogr* 2007;21:430-8.  
10  
11  
12  
13 [19] Cha S. Tight binding inhibitors-I. Kinetic behavior. *Biochem Pharmacol* 1975;24:2177-  
14 85.  
15  
16  
17 [20] Williams JW, Morrison JF. The kinetics of reversible tight-binding inhibition. In: Purish  
18 DL, editor. *Enzyme Kinetics and Mechanism Part A*. New York: Academic Press,  
19 1979. p. 437-.  
20  
21  
22  
23 [21] Jorga K, Fotteler B, Heizmann P, Gasser R. Metabolism and excretion of tolcapone, a  
24 novel inhibitor of catechol-O- methyltransferase. *Br J Clin Pharmacol* 1999;48:513-20.  
25  
26  
27 [22] Wikberg T, Vuorela A, Ottoila P, Taskinen J. Identification of major metabolites of the  
28 catechol-O-methyltransferase inhibitor entacapone in rats and humans. *Drug*  
29 *metabolism and disposition: the biological fate of chemicals* 1993;21:81-92.  
30  
31  
32 [23] Antonio L, Grillasca JP, Taskinen J, Elovaara E, Burchell B, Piet MH, et al.  
33 Characterization of catechol glucuronidation in rat liver. *Drug metabolism and*  
34 *disposition: the biological fate of chemicals* 2002;30:199-207.  
35  
36  
37 [24] Zamek-Gliszczyński MJ, Hoffmaster KA, Nezasa K, Tallman MN, Brouwer KL.  
38 Integration of hepatic drug transporters and phase II metabolizing enzymes:  
39 mechanisms of hepatic excretion of sulfate, glucuronide, and glutathione metabolites.  
40 *Eur J Pharm Sci* 2006;27:447-86.  
41  
42  
43 [25] Shiratani H, Katoh M, Nakajima M, Yokoi T. Species differences in UDP-  
44 glucuronosyltransferase activities in mice and rats. *Drug metabolism and disposition:*  
45 *the biological fate of chemicals* 2008;36:1745-52.  
46  
47  
48  
49  
50  
51  
52  
53  
54  
55  
56  
57  
58  
59  
60  
61  
62  
63  
64  
65

- 1 [26] Mackenzie PI, Gregory PA, Lewinsky RH, Yasmin SN, Height T, McKinnon RA, et al.  
2  
3 Polymorphic variations in the expression of the chemical detoxifying UDP  
4  
5 glucuronosyltransferases. *Toxicol Appl Pharmacol* 2005;207:77-83.  
6
- 7 [27] Wikberg T, Ottoila P, Taskinen J. Identification of major urinary metabolites of the  
8  
9 catechol-O- methyltransferase inhibitor entacapone in the dog. *Eur J Drug Metab*  
10  
11 *Pharmacokinet* 1993;18:359-67.  
12
- 13 [28] Ovaska M, Yliniemela A. A semiempirical study on inhibition of catechol O-  
14  
15 methyltransferase by substituted catechols. *J Comput Aided Mol Des* 1998;12:301-7.  
16  
17
- 18 [29] Männistö PT, Ulmanen I, Lundstrom K, Taskinen J, Tenhunen J, Tilgmann C, et al.  
19  
20 Characteristics of catechol O-methyl-transferase (COMT) and properties of selective  
21  
22 COMT inhibitors. *Prog Drug Res* 1992;39:291-350.  
23  
24
- 25 [30] Roth JA. Membrane-bound catechol-O-methyltransferase: a reevaluation of its role in  
26  
27 the O-methylation of the catecholamine neurotransmitters. *Rev Physiol Biochem*  
28  
29 *Pharmacol* 1992;120:1-29.  
30  
31
- 32 [31] Tenhunen J, Salminen M, Jalanko A, Ukkonen S, Ulmanen I. Structure of the rat  
33  
34 catechol-O-methyltransferase gene: separate promoters are used to produce mRNAs  
35  
36 for soluble and membrane-bound forms of the enzyme. *DNA Cell Biol* 1993;12:253-  
37  
38 63.  
39  
40
- 41 [32] Tenhunen J, Salminen M, Lundstrom K, Kiviluoto T, Savolainen R, Ulmanen I.  
42  
43 Genomic organization of the human catechol O-methyltransferase gene and its  
44  
45 expression from two distinct promoters. *Eur J Biochem* 1994;223:1049-59.  
46  
47  
48  
49  
50  
51  
52  
53  
54  
55  
56  
57  
58  
59  
60  
61  
62  
63  
64  
65



**Table 1**

Pharmacokinetic parameters of nebicapone and respective metabolites (nebicapone glucuronide, 3-O-methyl-nebicapone and nebicapone sulphate) in mice and rat plasma after po and i.p. administration of nebicapone (12 mg/kg).

	Rat		Mice	
	p.o.	i.p.	p.o.	i.p.
<b>C<sub>max</sub> (µg/ml)</b>				
Nebicapone	7.7 ± 1.3	21.2 ± 4.5*	1.0 ± 0.4	3.9 ± 2.3*
Nebicapone glucuronide	5.4 ± 0.8	12.4 ± 2.9*	21.3 ± 14.2	120.6 ± 17.1*
3-O-methyl-Nebicapone	4.0 ± 0.5	4.7 ± 0.6	1.0 ± 0.2	2.4 ± 0.5*
Nebicapone sulphate	6.5 ± 2.8	11.5 ± 4.1	nd	nd
<b>T<sub>max</sub> (hr)</b>				
Nebicapone	0.5	0.5	0.5 (0.5-2)	0.5 (5-1)
Nebicapone glucuronide	0.5	0.5	0.5 (0.5-1)	0.5
3-O-methyl-Nebicapone	8.0 (4.0-8.0)	4.0	8.0 (2.0-8.0)	4.0 (4.0-8.0)
Nebicapone sulphate	1.0 (0.5-2.0)	0.5	nd	nd
<b>AUC<sub>0-24</sub> (h.µg/ml)</b>				
Nebicapone	13.1 ± 1.6	26.3 ± 9.1*	3.1 ± 0.7	3.4 ± 1.7
Nebicapone glucuronide	12.1 ± 2.2	17.1 ± 4.4	34.1 ± 11.7	141.0 ± 23.9*
3-O-methyl-Nebicapone	66.6 ± 7.3	65.1 ± 9.7	16.1 ± 3.3	27.8 ± 5.9*
Nebicapone sulphate	26.0 ± 4.3	24.4 ± 6.6	nd	nd

Values are means ± standard deviations for a n of 5. t<sub>max</sub> values are median with range values in parentheses. nd – not detected.\* Significantly different from po (p<0.05)

**Table 2**

Kinetic parameters for the interaction of COMT with adrenaline and with nebicapone.

	Mouse	Rat
<i>Derived from Michaelis-Menten equation</i>		
$K_m$ ( $\mu\text{M}$ )	5.0 (3.8; 6.1)	267 (224;311)
$V_{\text{max}}$ (nmol/mg protein/h)	25.7 (24.4; 27.0)	93.8 (88.6; 98.9)

Values are means of 4 animals and were obtained by non-linear regression analysis of the equation mentioned above. 95% confidence intervals are given in parentheses.

**Table 3**

Kinetic parameters for the interaction of COMT with nebicapone.

	$K_{cat}$ ( $\text{min}^{-1}$ )	$\epsilon$	$K_i$ (nM)
<i>Mouse</i>			
Total	5.8 (4.7; 6.9)	83 (69; 98)	1.18 (0.55; 1.84)
S	8.1 (6.0; 10.3)	27 (20; 35)	0.14 (0.00; 0.31)
MB	5.6 (4.9; 6.4)	175 (153; 196)	2.55 (1.84; 3.25)
<i>Rat</i>			
Total	7.3 (6.7; 7.9)	150 (141; 160)	0.17 (0.00; 0.53)
S	8.6 (7.6; 9.7)	188 (171; 206)	0.14 (0.00; 0.46)
MB	6.6 (5.2; 7.9)	60 (50; 71)	0.04 (0.00; 0.09)

Values are means of 3-4 animals and were obtained by non-linear regression analysis of equation 1. 95% confidence intervals are given in parentheses.

1 **Figure 1.** Rat and mouse liver COMT inhibition by nebicapone. COMT activity was  
2  
3 determined after (A) oral administration of nebicapone, 30 mg/kg at 0.5, 1, 3, 6 and 9h and  
4  
5 (B) 1 h after oral administration of nebicapone at 0.1, 0.3, 1, 3, 10, 30 and 100 mg/kg.  
6  
7 Symbols represent means  $\pm$  S.E.M. of n = 5 animals.  
8  
9

10  
11  
12 **Figure 2.** Mean plasma concentration-time profile of (A) nebicapone, (B) nebicapone  
13  
14 glucuronide, (C) 3-O-methyl-nebicapone and (D) nebicapone sulphate after oral  
15  
16 administration of nebicapone (12 mg/kg) in the rat and mouse. Each point represents means  
17  
18  $\pm$  S.E.M. of n = 5 animals.  
19  
20  
21

22  
23  
24 **Figure 3.** Mean plasma concentration-time profile of (A) nebicapone, (B) nebicapone  
25  
26 glucuronide, (C) 3-O-methyl-nebicapone and (D) nebicapone sulphate after intraperitoneal  
27  
28 administration of nebicapone (12 mg/kg) in the rat and mouse. Each point represents means  
29  
30  $\pm$  S.E.M. of n = 5 animals.  
31  
32  
33

34  
35  
36 **Figure 4.** Saturation curves of liver COMT. COMT activity is represented as the rate of  
37  
38 metanephrine formation from increasing adrenaline concentrations by mouse (A) and rat (B)  
39  
40 liver homogenates. Each point represents means  $\pm$  S.E.M. of n = 4 animals.  
41  
42  
43

44  
45  
46 **Figure 5.** Ackermann-Potter plots of mouse (A) and rat (B) liver COMT. Increasing amounts  
47  
48 of liver homogenates were incubated with nebicapone (0-150 nM) in the presence of a  
49  
50 saturating concentration of adrenaline (rat – 1500  $\mu$ M; mouse - 50  $\mu$ M). Each point  
51  
52 represents means  $\pm$  S.E.M. of n = 4 animals.  
53  
54  
55  
56  
57  
58  
59  
60  
61  
62  
63  
64  
65

1 **Figure 6.** Immunoblott analysis of MB- and S-COMT in rat and mouse liver homogenates. A  
2  
3 10 % SDS-polyacrylamide gel was loaded with 30  $\mu$ g total protein in each lane. Each column  
4  
5 represents means  $\pm$  S.E.M. of n = 3 animals. Significantly different from values for MB-COMT  
6  
7 (\* P <0.01). Significantly different from corresponding values in the rat (# P < 0.01).  
8  
9  
10  
11  
12  
13  
14  
15  
16  
17  
18  
19  
20  
21  
22  
23  
24  
25  
26  
27  
28  
29  
30  
31  
32  
33  
34  
35  
36  
37  
38  
39  
40  
41  
42  
43  
44  
45  
46  
47  
48  
49  
50  
51  
52  
53  
54  
55  
56  
57  
58  
59  
60  
61  
62  
63  
64  
65

Figure 1

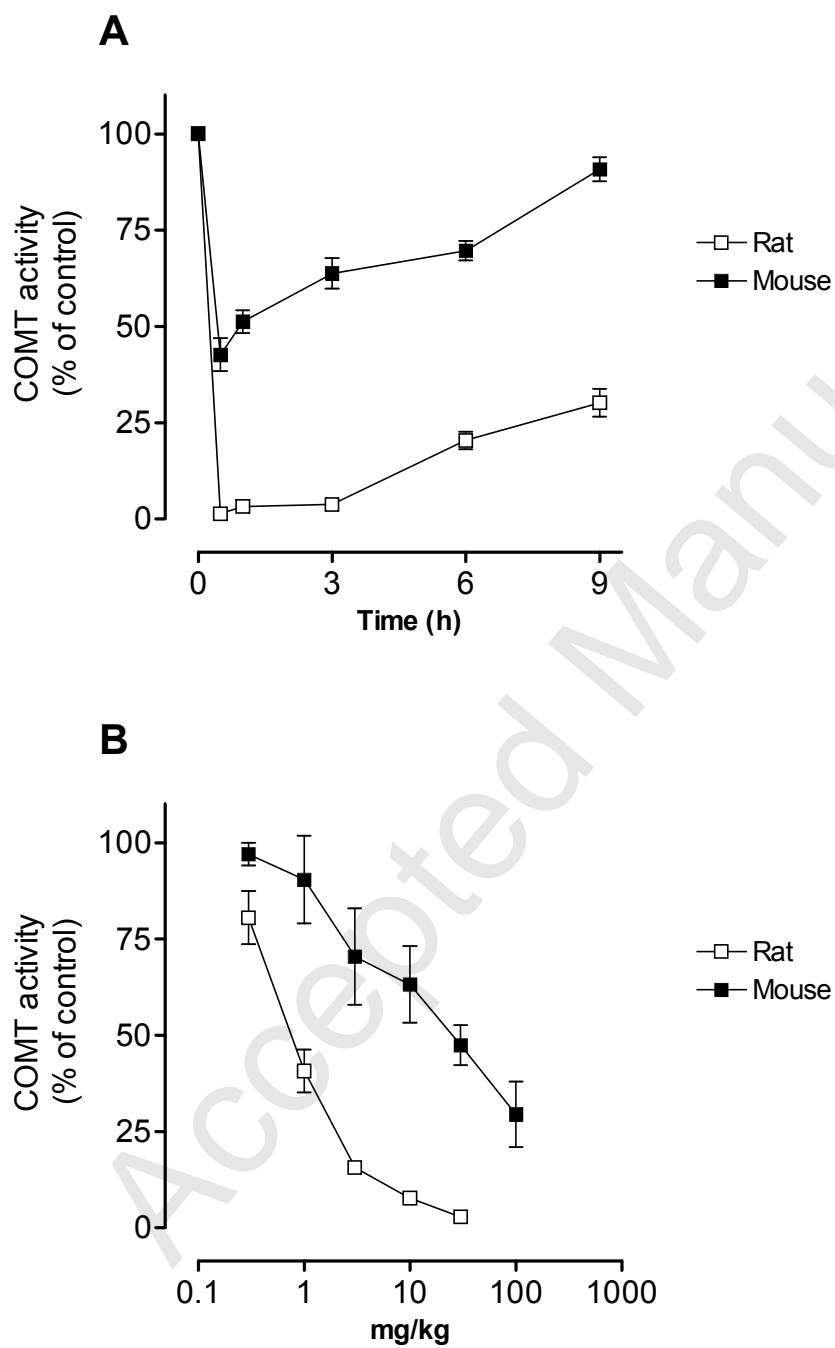


Figure 2

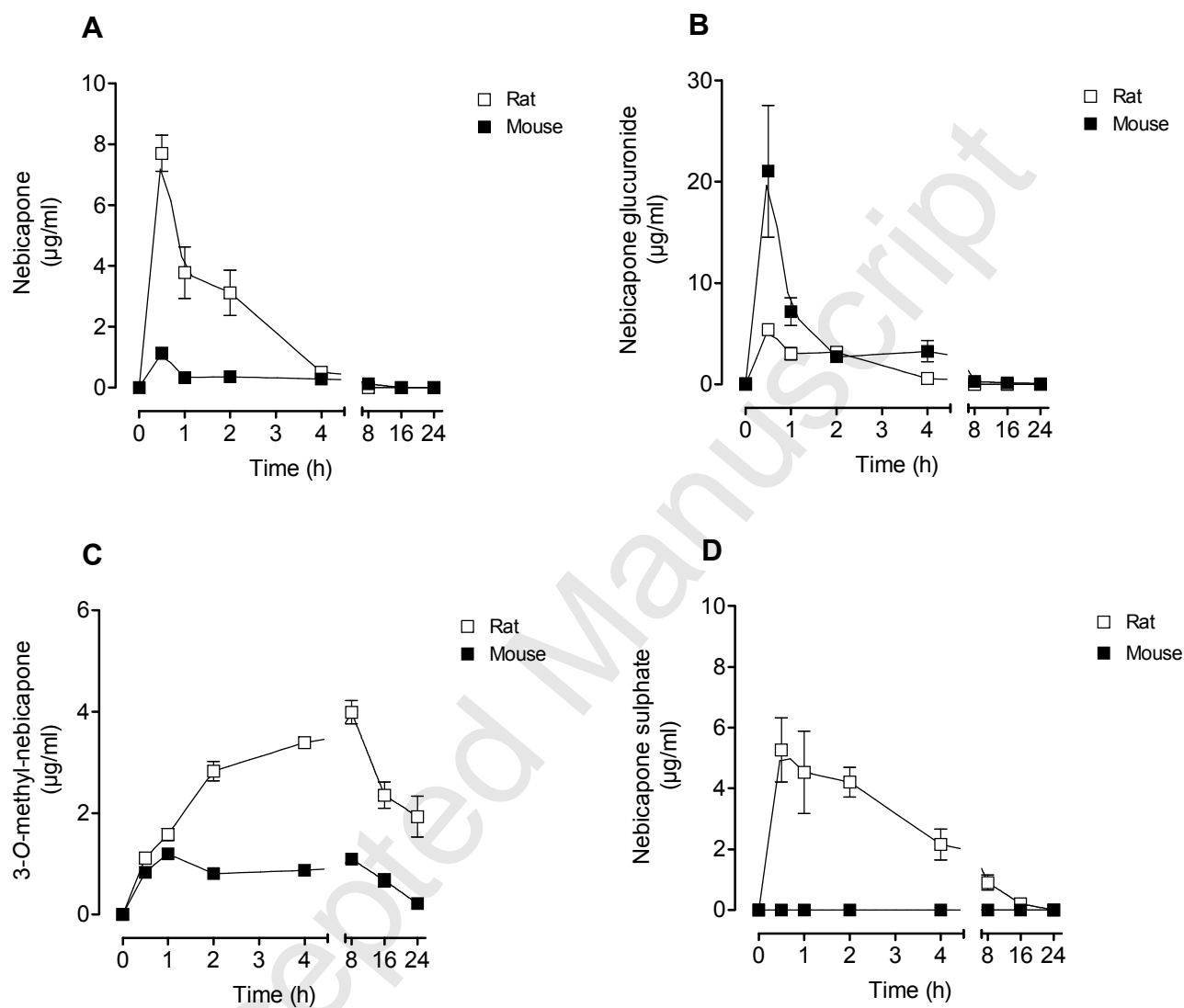


Figure 3

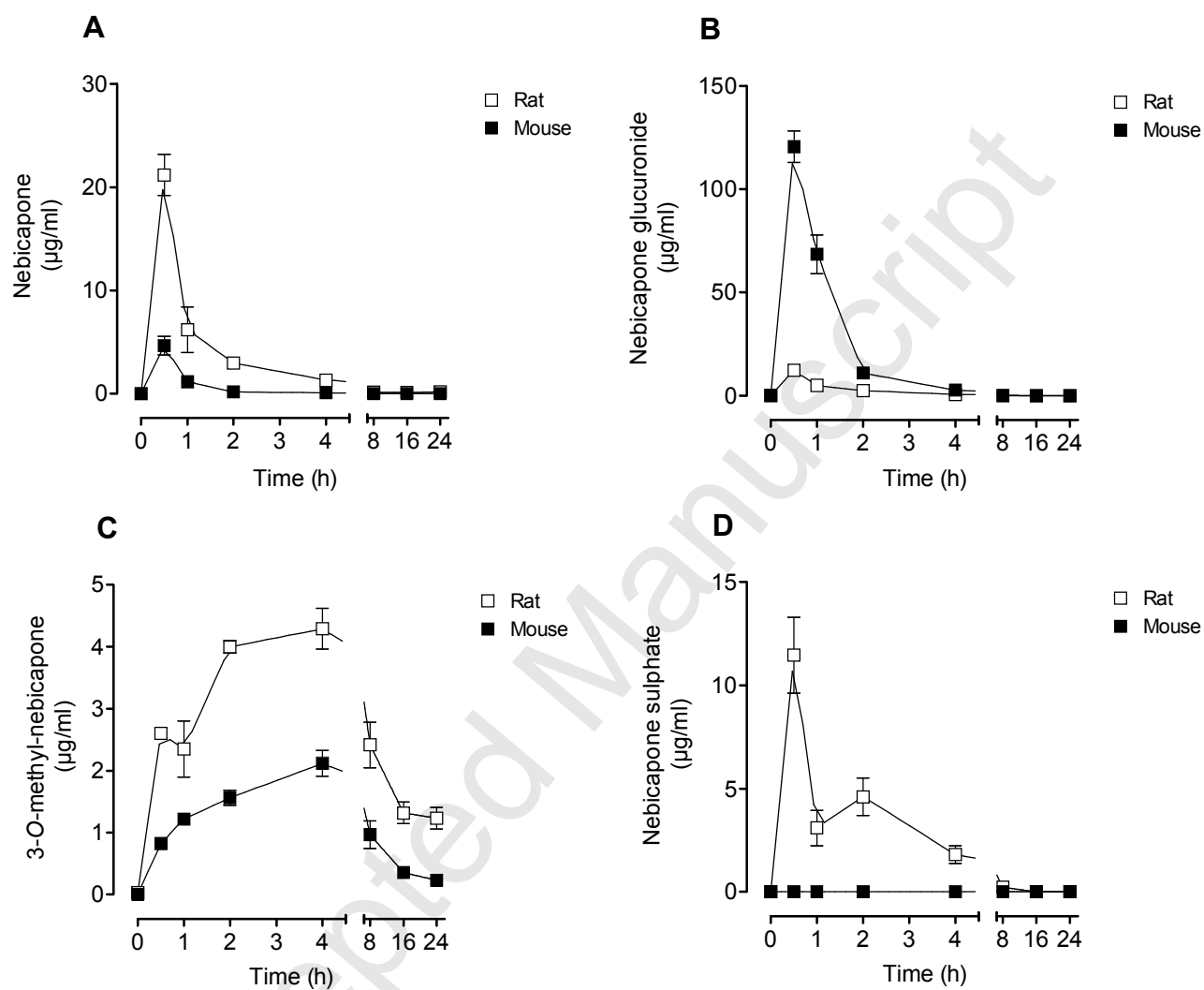




Figure 4

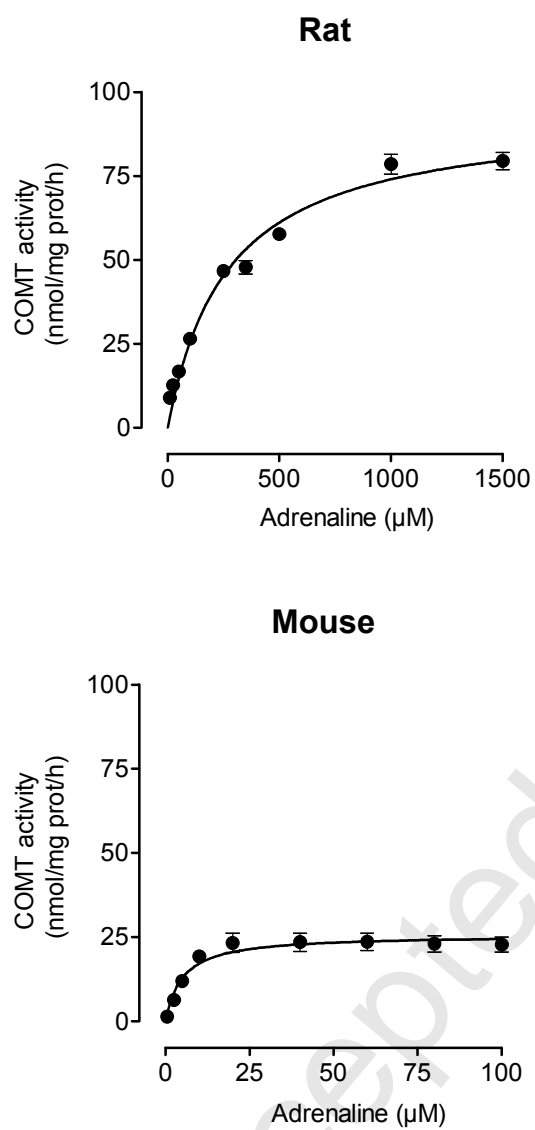


Figure 5

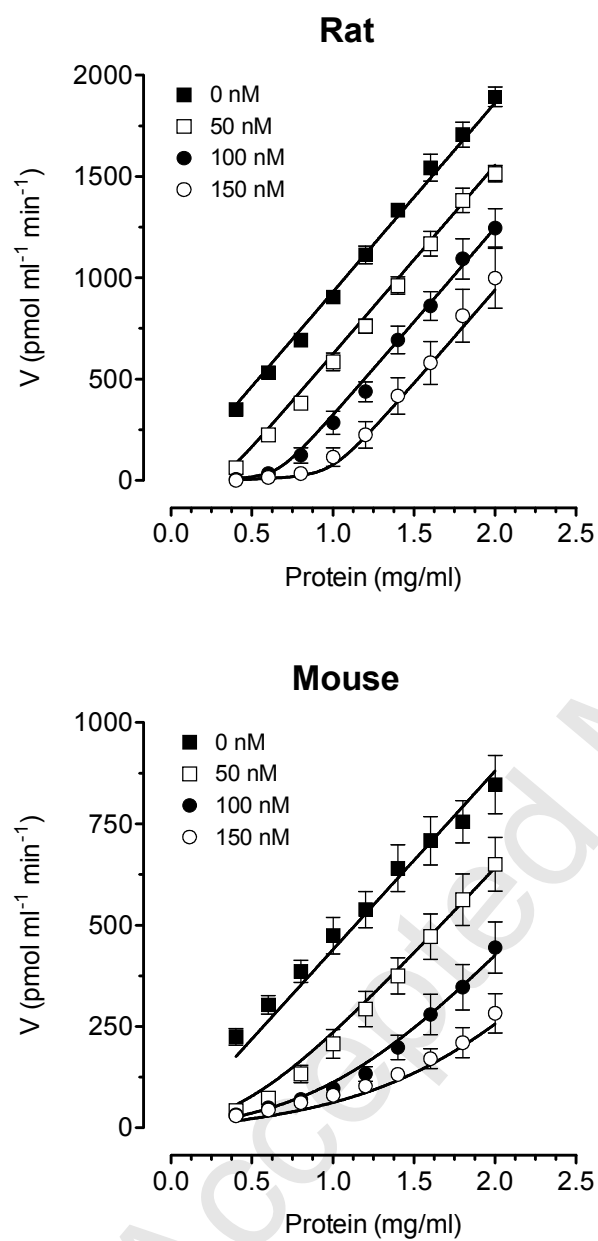
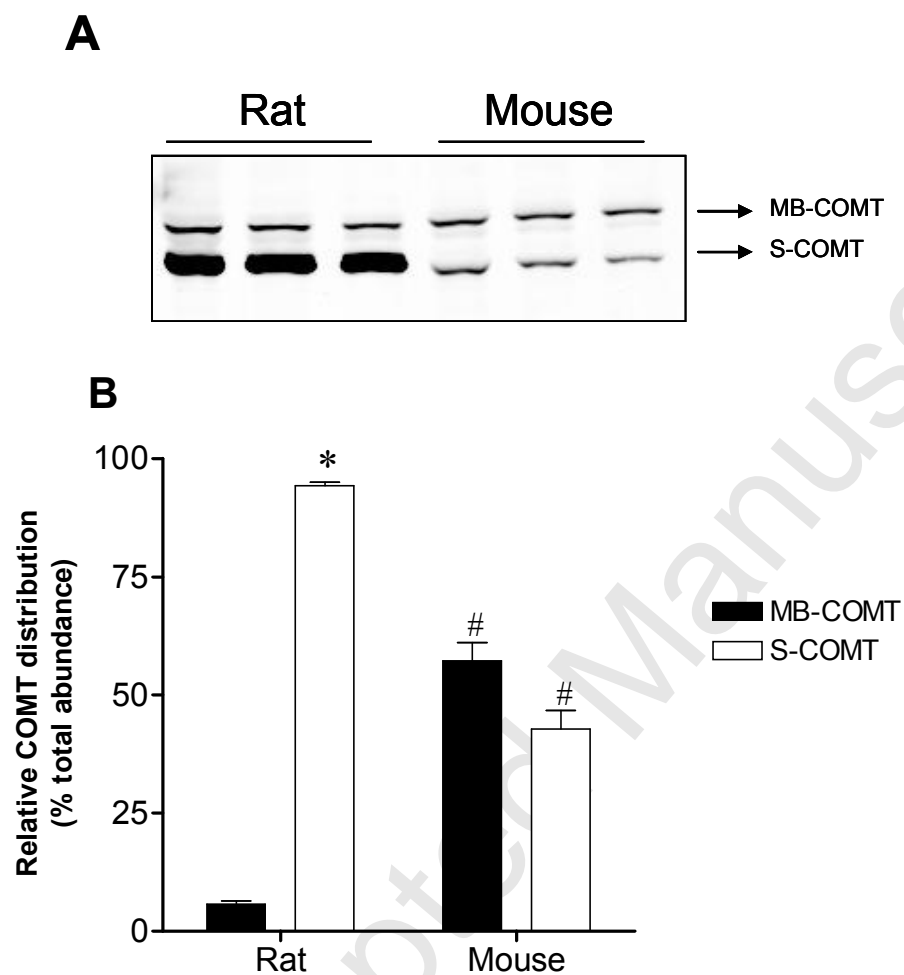
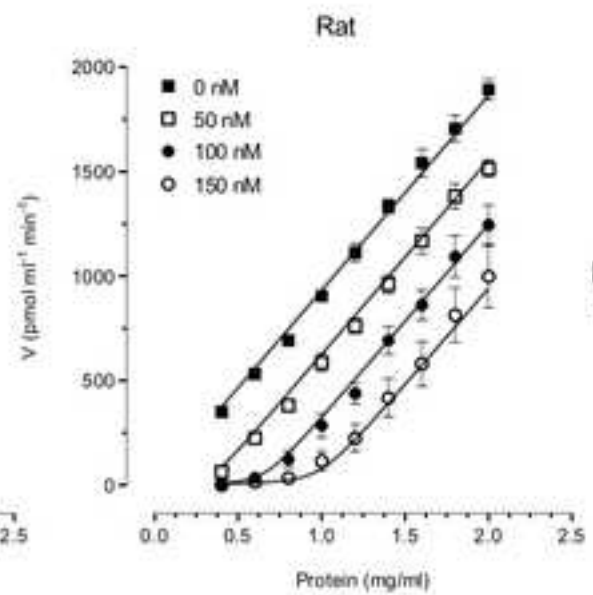
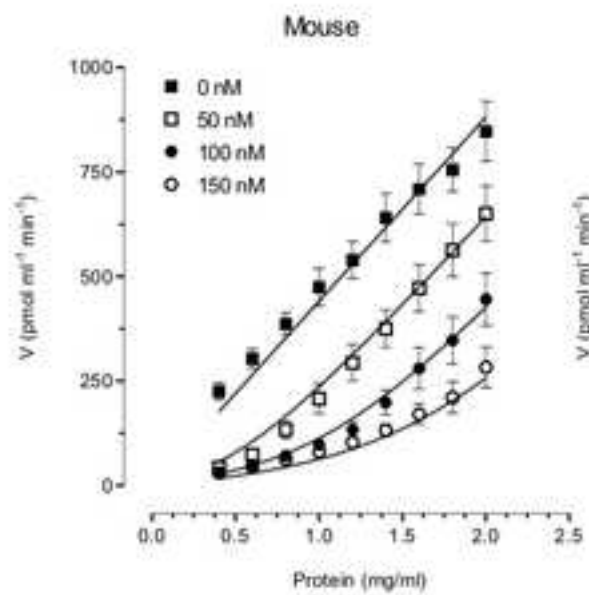


Figure 6



Manuscript



Nebicapone was more potent in inhibiting rat liver COMT than mouse liver COMT ( $K_i$  respectively 0.2 and 1.2 nM).