



HAL
open science

Crystalline Complexes of 2,2'-Bis(9-hydroxy-9-fluorenyl)biphenyl Host with Oligofunctional and Conjugate Functional Group Guests

Edwin Weber

► **To cite this version:**

Edwin Weber. Crystalline Complexes of 2,2'-Bis(9-hydroxy-9-fluorenyl)biphenyl Host with Oligofunctional and Conjugate Functional Group Guests. *Supramolecular Chemistry*, 2007, 19 (6), pp.373-382. 10.1080/10610270600987895 . hal-00513492

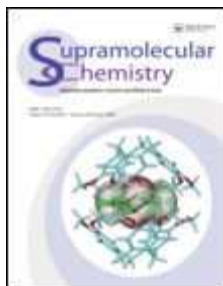
HAL Id: hal-00513492

<https://hal.science/hal-00513492>

Submitted on 1 Sep 2010

HAL is a multi-disciplinary open access archive for the deposit and dissemination of scientific research documents, whether they are published or not. The documents may come from teaching and research institutions in France or abroad, or from public or private research centers.

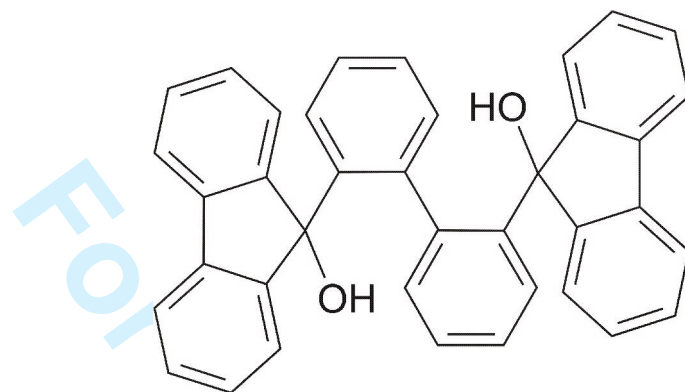
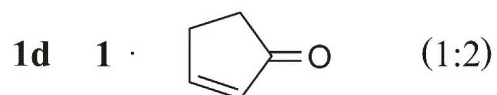
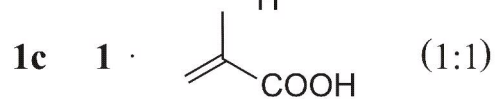
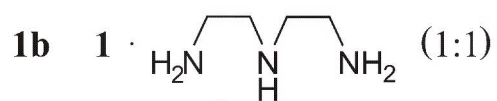
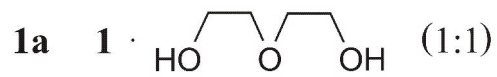
L'archive ouverte pluridisciplinaire **HAL**, est destinée au dépôt et à la diffusion de documents scientifiques de niveau recherche, publiés ou non, émanant des établissements d'enseignement et de recherche français ou étrangers, des laboratoires publics ou privés.



Crystalline Complexes of 2,2'-Bis(9-hydroxy-9-fluorenyl)biphenyl Host with Oligofunctional and Conjugate Functional Group Guests

Journal:	<i>Supramolecular Chemistry</i>
Manuscript ID:	GSCH-2006-0040.R1
Manuscript Type:	Full Paper
Date Submitted by the Author:	29-Aug-2006
Complete List of Authors:	Weber, Edwin; Institut fur Organische Chemie, Chemistry
Keywords:	Inclusion host, Organic guests, Crystalline inclusion compounds, Supramolecular interactions, X-ray crystal structure determinations



**1**

Scheme 1

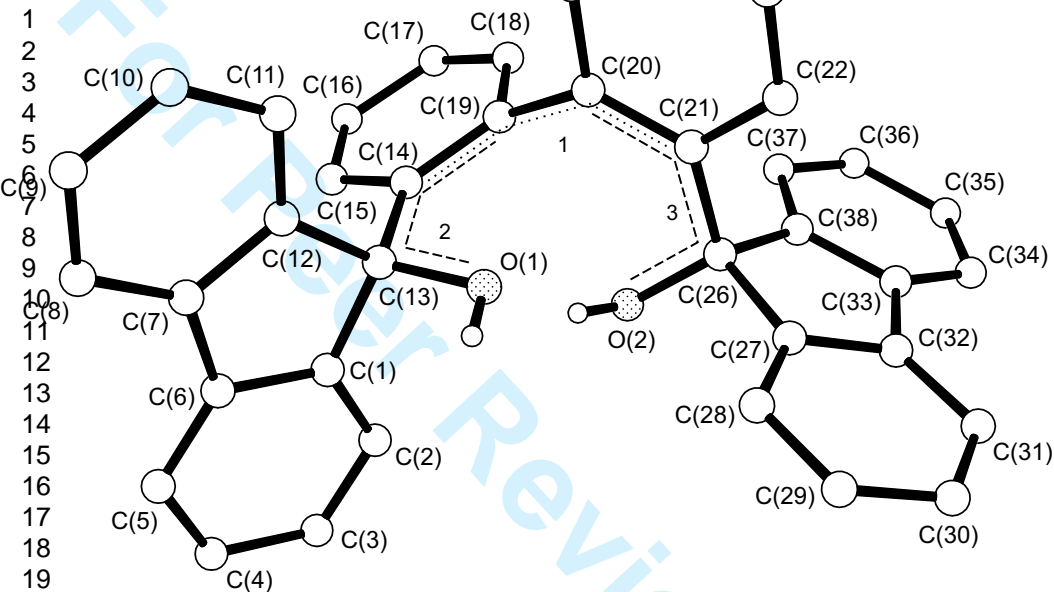


Fig. 1

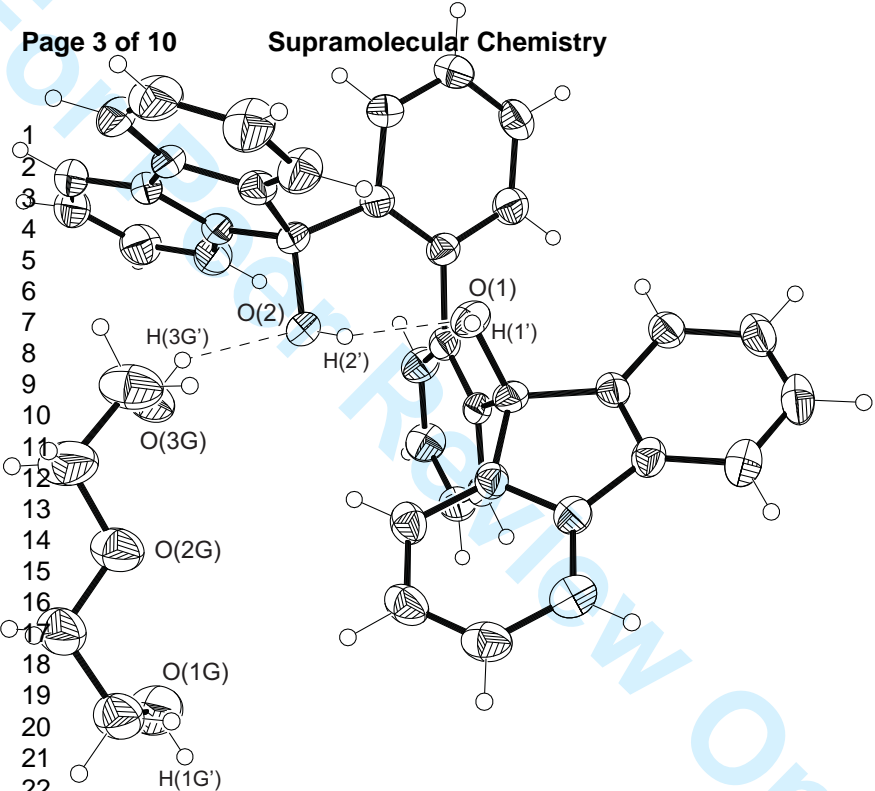
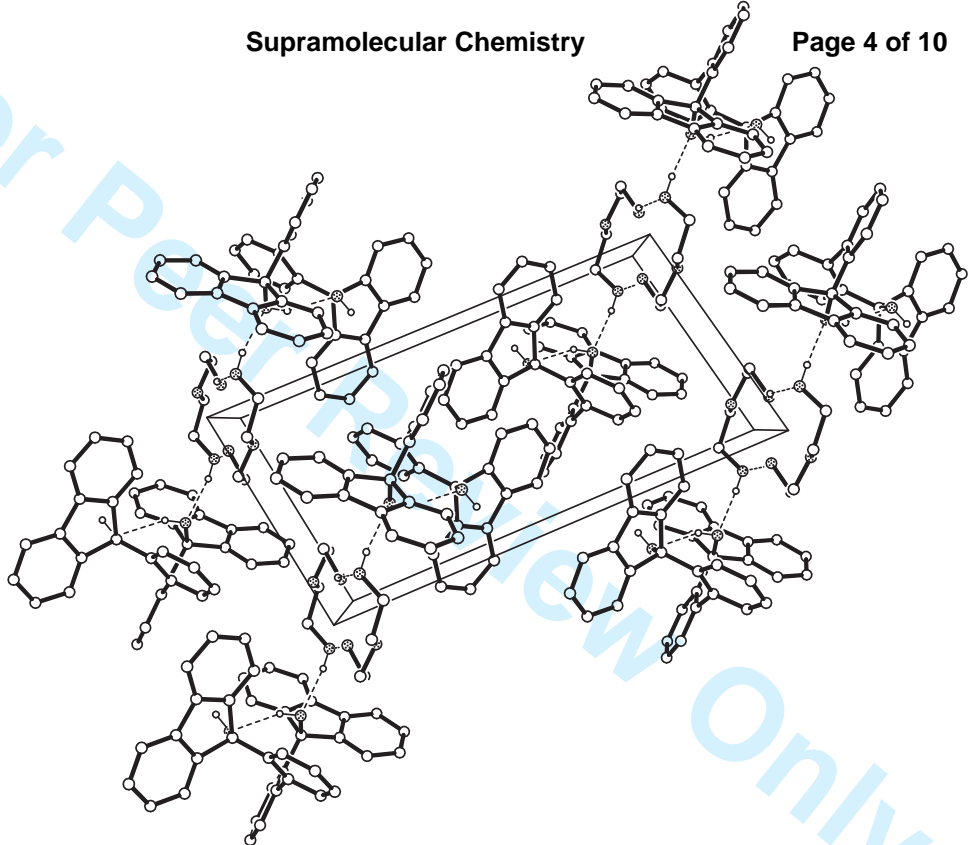


Fig. 2

1
2
3
4
5
6
7
8
9
10
11
12
13
14
15
16
17
18
19
20
21
22
23
24
25
26
27



http://mc.manuscriptcentral.com/tandf/gsch Email: suprachem@mail.cm.utexas.edu

Fig. 3

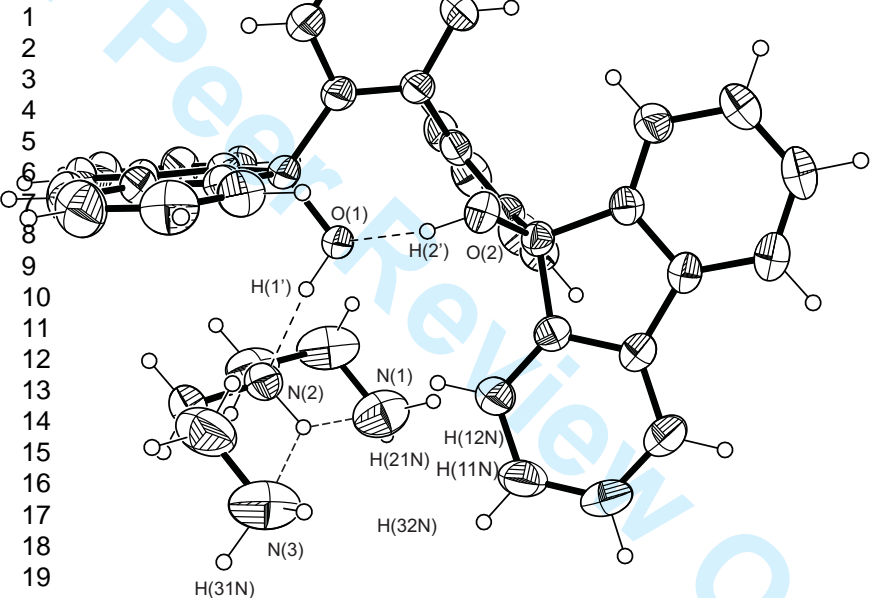


Fig. 4

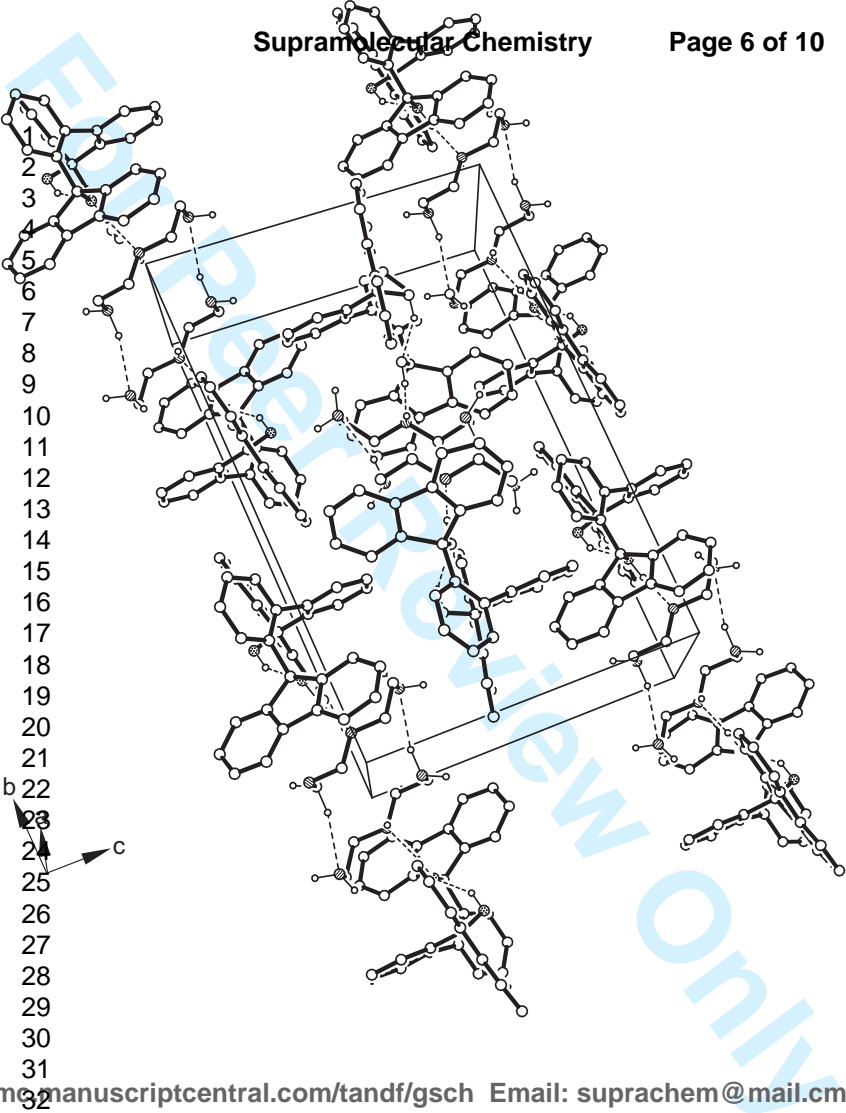
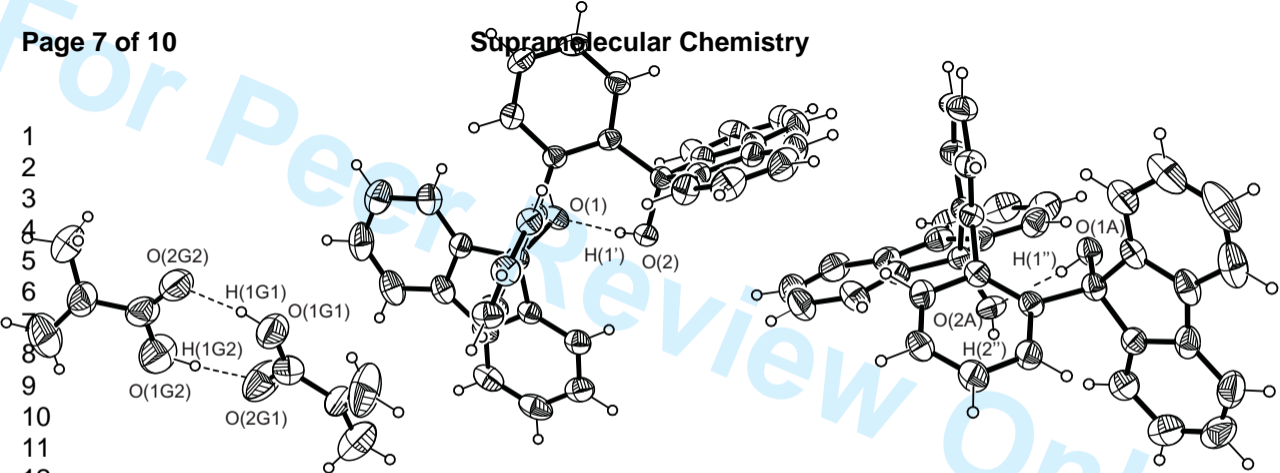
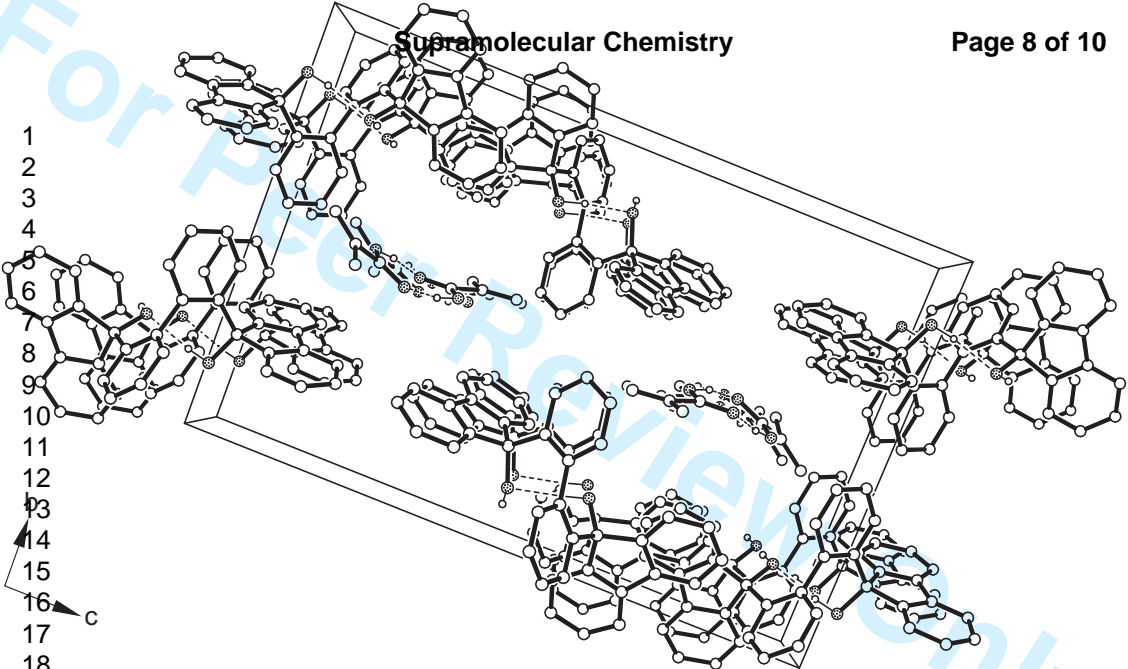


Fig. 5



URL: <http://mc.manuscriptcentral.com/tandf/gsch> Email: suprachem@mail.cm.utexas.edu

Fig. 6



URL: <http://mc.manuscriptcentral.com/tandf/gsch> Email: suprachem@mail.cm.utexas.edu

Fig. 7

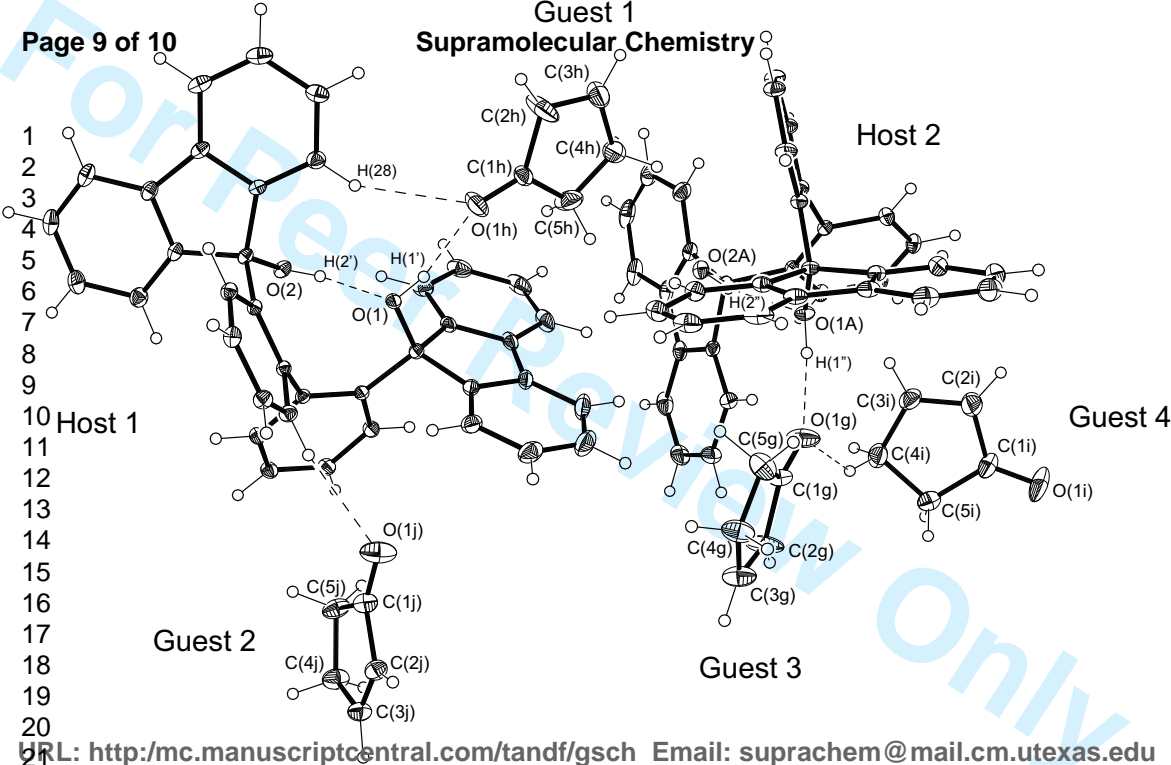


Fig. 8

