



**HAL**  
open science

# **The Experiences and Personal Religious Beliefs of Egyptian Science Teachers as a framework for understanding the shaping and reshaping of their beliefs and practices about Science-Technology-Society (STS)**

Nasser Mansour

## **► To cite this version:**

Nasser Mansour. The Experiences and Personal Religious Beliefs of Egyptian Science Teachers as a framework for understanding the shaping and reshaping of their beliefs and practices about Science-Technology-Society (STS). *International Journal of Science Education*, 2008, 30 (12), pp.1605-1634. <10.1080/09500690701463303>. <hal-00513345>

**HAL Id: hal-00513345**

**<https://hal.science/hal-00513345v1>**

Submitted on 1 Sep 2010

**HAL** is a multi-disciplinary open access archive for the deposit and dissemination of scientific research documents, whether they are published or not. The documents may come from teaching and research institutions in France or abroad, or from public or private research centers.

L'archive ouverte pluridisciplinaire **HAL**, est destinée au dépôt et à la diffusion de documents scientifiques de niveau recherche, publiés ou non, émanant des établissements d'enseignement et de recherche français ou étrangers, des laboratoires publics ou privés.



HAL Authorization



**The Experiences and Personal Religious Beliefs of Egyptian  
Science Teachers  
as a framework for understanding the shaping and  
reshaping of their  
beliefs and practices about Science-Technology-Society  
(STS)**

Journal:	<i>International Journal of Science Education</i>
Manuscript ID:	TSED-2007-0097
Manuscript Type:	Research Paper
Keywords:	in-service, qualitative research, science education, teacher beliefs, teacher actions
Keywords (user):	Teachers' Personal religious beliefs, Teachers' Beliefs and Practice, Science, Technology, and Society (STS)



*International Journal of Science Education*

This research investigates the role of experience in relation to teachers' beliefs and practices. The study adopted a social-cultural constructivist perspective using an interpretive approach. The research was guided by teachers' interpretations of their experiences related to teaching science through Science-Technology-Society (STS) issues. These interpretations are re-interpreted to find meaningful conceptual categories (grounded in the data) from which to build a model to understand the influence of experiences within socio-Islamic culture on teachers' beliefs and practices. Data was collected from ten teachers using interviews and observations. The findings of this study suggest that it was mainly teachers' personal religious beliefs and experiences that shaped their beliefs and practices. The research also led to a model, constructed on the basis of the data analysis, which suggests an explanation of how teachers' personal religious beliefs and experiences influence their beliefs and practices.

Personal religious beliefs; Egyptian science teachers; Teachers' experiences; Religious schema; Teachers' beliefs and practices; Pedagogical beliefs, Science; Technology and Society (STS); social context; Teacher education

**Introduction**

Teachers' beliefs develop throughout their lifetimes and are influenced by a variety of factors, including events, experiences, and other people in their lives (Knowles, 1992). Some beliefs are directly adopted from the culture, while others are shaped by experiences framed by the culture. For example, each individual shares similar experiences as a child, as a member of a family, and as a parent. These experiences shape teachers' beliefs about students, curriculum development, and the overall schooling process (McGillicuddy-De Lisi & Subramanian, 1996).

1  
2  
3 Shulman (1987) concluded that teachers' beliefs come from four sources:  
4  
5 accumulated content knowledge, educational materials and structures, formal teacher  
6  
7 education, and the 'wisdom of practice', i.e., from practical experience. Lortie (1975)  
8  
9 suggested that teacher education and classroom teaching experience contribute to the  
10  
11 development of pedagogical content knowledge, while disciplinary knowledge in  
12  
13 teacher education helps to develop curricular and subject matter knowledge among  
14  
15 prospective teachers. Richardson (2003) identified three major sources for teachers'  
16  
17 beliefs: personal experience, experience with schooling and instruction, and  
18  
19 experience with formal knowledge, including school subjects and pedagogical  
20  
21 knowledge. He emphasised that experience with schooling and instruction was the  
22  
23 most important formal source for teachers' beliefs since they had been students in  
24  
25 formal schools for many years. In addition, informal experiences are represented in  
26  
27 the contacts that teachers have had, or have, in every-day life, and that might have  
28  
29 some influence by adding to, refining, adjusting, supporting, challenging, or even  
30  
31 changing their beliefs and knowledge. In this respect, Zeichner (1980) labelled such  
32  
33 informal and formal experiences as 'socialisation influences', arguing that teachers'  
34  
35 own experience of having been taught at school had a stronger influence on them than  
36  
37 their formal university training.  
38  
39  
40  
41  
42  
43  
44  
45  
46  
47

48 The kind of experience that a teacher has undergone makes him/her act in a certain  
49  
50 manner e.g. conduct a certain classroom activity, or undertake a professional  
51  
52 development activity. Beliefs have been described as filters through which all new  
53  
54 information must pass and which are used to interpret new experiences (Kagan, 1992)  
55  
56 and Pajares (1992) suggests that beliefs are created through a process of enculturation  
57  
58 and social construction. Butt et al. (1992) argue that in order to understand how a  
59  
60

1  
2  
3 teacher thinks, acts, feels and intends, and how the teacher knows what s/he knows, it  
4  
5 is essential to understand the relationship and the tensions between context and his/her  
6  
7  
8 life experiences. Additionally, in order to understand a teacher's classroom practices,  
9  
10 it is necessary to understand the contexts within which s/he works.  
11  
12

13  
14  
15 A growing body of research argues that teachers' beliefs should be studied within a  
16  
17 framework that recognises the influence of culture (Barnes, 1992; Hamilton &  
18  
19 Richardson, 1995, Olson, 1988). Within the socially-constituted nature of culture, the  
20  
21 personal religious beliefs of individuals are likely to play an integral role in  
22  
23 producing, filtering, prioritising and interpreting information (Fysh & Lucas, 1998).  
24  
25 Thus, the context in which scientific concepts are presented to students may be  
26  
27 strongly influenced by the teacher's beliefs or worldview (Cobern & Loving, 2000).  
28  
29  
30  
31  
32

33  
34 World events have shown that religion can have a profound impact on many societies,  
35  
36 and that an individual's religious beliefs can certainly influence his/her own actions.  
37  
38 Therefore, religious influences on the lives of contemporary teachers should be  
39  
40 considered when building up an understanding of their work in the classroom. The  
41  
42 influence of religion on a teacher's practices will be significant, especially if he/she  
43  
44 has to respond intelligently and effectively to the challenges of a science curriculum  
45  
46 that includes certain controversial issues which may occupy part of the  
47  
48 science/religion spectrum (Fysh & Lucas, 1998). Particularly where Islam is  
49  
50 concerned, religion is a major element of the culture; thus religious influences on the  
51  
52 lives of contemporary teachers should be taken into account when forming an insight  
53  
54 into their experiences, and their related beliefs and practices. The influence of  
55  
56 personal religious beliefs on the development of the beliefs and practices of any  
57  
58  
59  
60

1  
2  
3 teacher will be significant, but this influence may be especially important in the area  
4  
5 of science, technology and society (STS) because of the complexity of the topics  
6  
7 handled.  
8  
9

10  
11  
12 Most studies of beliefs in general, and of STS in particular, have been carried out in  
13  
14 Western societies rather than Islamic cultures. Many topics included in STS education  
15  
16 are acknowledged as controversial; e.g., issues concerning evolution, cloning,  
17  
18 abortion, and genetic engineering. These pose problems for science teachers in  
19  
20 Islamic countries, because of potential conflict between the implications of a scientific  
21  
22 study of some these issues and the religion of Islam. Some other issues may not  
23  
24 conflict formally with Islam but teachers' experiences, or the way they interpret the  
25  
26 Islamic view regarding these issues, can create what is, in fact, a false contradiction.  
27  
28 This paper describes a study of teachers' experiences, beliefs, and practices about STS  
29  
30 issues within Islamic culture. The main research question is, "What influences have  
31  
32 affected or shaped science teachers' beliefs and practices about STS education?" To  
33  
34 answer this question, the study poses three sub-questions;  
35  
36  
37  
38  
39

- 40  
41  
42  
43  
44  
45  
46  
47  
48  
49  
50
- What variety of experiences influences teachers' beliefs and practices?
  - What is the role of experiences in shaping teachers' beliefs and practices?
  - What is the role of the Islamic context in shaping teachers' experiences, beliefs and practices?

### 51 52 53 **The Educational System in Egypt**

54  
55  
56 Two separate educational systems exist in Egypt. One is secular, and is a system for  
57  
58 technological, practical, specialized training, while the other, Al-Azhar is based on  
59  
60 spiritual and cultural instruction. Science has been part of the central National

1  
2  
3 Curriculum (NC) since the 1960s, and has traditionally included integrated science at  
4 primary and preparatory levels, and separate science – chemistry, physics and biology  
5 – at the secondary level. This study focused on science teachers working in  
6 preparatory-secular schools (see Table 1).  
7  
8  
9  
10  
11

### 12 13 14 **Table 1. The Secular Education System in Egypt**

#### 15 16 17 **Theoretical framework**

18  
19  
20  
21 This study is not about the influence of Islam as a religion on teachers' beliefs and  
22 practices. Rather, it is concerned with the influence of teachers' understanding and  
23 interpretation of religious principles on the teaching and/or learning of controversial  
24 scientific issues, and the extent to which a person views these issues as directly or  
25 indirectly related to religion. This is why the research linked the word 'personal' with  
26 the concept 'religious beliefs' – thus Personal Religious Beliefs (PRB). This term is  
27 used to refer to the views, opinions, attitudes, and knowledge constructed by a person  
28 through interaction with his/her socio-cultural context through his/her life history and  
29 interpreted as having their origins in religion. The PRB works as a framework for  
30 understanding events, experiences and objects on an individual level. It is a social  
31 construct based broadly on the various experiences (and more particularly on the  
32 religious experiences) that a person lives through. Since PRBs are a product of the  
33 interactions among all the experiences that the person accumulates, and depend on the  
34 socio-cultural context in which the individual has been brought up, this study adopted  
35 social-cultural constructivism as its theoretical framework.  
36  
37  
38  
39  
40  
41  
42  
43  
44  
45  
46  
47  
48  
49  
50  
51  
52  
53  
54  
55  
56  
57

#### 58 **Methodology**

59  
60

1  
2  
3 The research had two stages. In the first, the data collection method was developed  
4 and participants were identified. The second involved collecting data by interviews  
5 and observations, analyzing the data using Multi-Grounded theory, discussing and  
6 interpreting the data, and finally developing a model for understanding the shaping  
7 and reshaping of teachers' beliefs and practices about STS.  
8  
9

### 16 *Participants*

17  
18  
19 Since it is interpretive-qualitative research, 'generalisability' was not a primary  
20 concern (Lofland & Lofland, 1984) and the sample was chosen on theoretical grounds  
21 (Glaser & Strauss, 1967) rather than a concern with 'representativeness' (Miles &  
22 Huberman, 1998). A 'maximum variation strategy' (Patton, 2002) was used to select a  
23 sample for study. The study started with six teachers and expanded to ten teachers  
24 until data collection revealed no new data (Charmaz, 2006). The selection was based  
25 on their diverse beliefs about teaching science through STS issues as revealed in  
26 responses to a questionnaire, which had been completed as part of another study by  
27 the author (Author 'anonymous for review process', 2006). The questionnaire  
28 consisted of 57 items and used a combination of Likert-type scales, ranking and open-  
29 ended questions. It is included the following sub-scales:  
30  
31  
32  
33  
34  
35  
36  
37  
38  
39  
40  
41  
42  
43  
44

- 45 • Beliefs about the relationship between science and technology
  - 46 • Beliefs about the relationship between science and society, beliefs about the
  - 47 relationship between technology and society
  - 48 • Beliefs about interaction between science-technology-society.
  - 49 • Beliefs about goals of science education
  - 50 • Beliefs about teaching/learning science through STS issues
  - 51 • Beliefs about teaching STS issues
- 52  
53  
54  
55  
56  
57  
58  
59  
60

- Beliefs about the roles of teacher/students in teaching/learning STS issues and use of teaching strategies.

The sampling was designed to include a broad variety of informant experiences, based on gender (five males and five females), age (from mid-30s to the early 50s), Variety of teaching expertise (from 10 to 23 years of teaching) and their experience of teaching in different preparatory schools in Egypt's Gharbiyya governorate. All ten teachers were Sunni Muslims (as are the majority of Muslims in Egypt) whose religious beliefs are founded on the Qur'an and the collected sayings (*ahadith*) of the Prophet Muhammad. They are represented in this study by letters (A, B, C, D, E, F, G, H, I and J).

#### *Data Collection Methods*

Data were collected in the first semester of the 2004–2005 academic year by means of a semi-structured interview and qualitative observation.

#### *Interviews*

Most of the interview questions were prepared in advance by considering the relevant literature (Bybee & Mau, 1986; Aikenhead & Ryan, 1989; Rubba & Harkness, 1993; Poulson, et al., 2001; Levitt, 2001; Tsai, 2002), and were piloted with two Egyptian preparatory teachers. The order of the questions was modified and some questions were added or varied as the interviews unfolded. The wording of the questions was also varied to ensure that participants grasped the meaning. The interviews were audio-taped and were transcribed immediately after the interview. Transcripts were given to each of the teachers before the start of the next interview for their scrutiny,

1  
2  
3 confirmation or criticism. Following each interview an initial analysis was carried out  
4  
5 to inform subsequent interviews. All the interviews lasted approximately 30-45  
6  
7 minutes, and each interviewee had around 4 to 5 observations and interviews. In  
8  
9 grounded theory, data collection continues until theoretical saturation is reached  
10  
11 (Strauss & Corbin, 1998). During the fourth interviews, responses showed repetition  
12  
13 of the emerging analytical categories. By the end of the fifth interview, core  
14  
15 categories seemed to be saturated suggesting that little new information or insight  
16  
17 would be gained by additional interviewing.  
18  
19  
20  
21  
22  
23

### 24 *Classroom observations*

25  
26  
27  
28 The study adopted qualitative observation, whose origins lie in anthropology, because  
29  
30 it produces detailed-qualitative descriptions of human behaviour that illuminate social  
31  
32 meaning and shared culture (Foster, 1996). Classroom observation aimed to ascertain  
33  
34 the extent to which teachers' classroom practices were affected by their beliefs  
35  
36 (Drever, 2003) and to provide an insight into how their beliefs affected their observed  
37  
38 practice (Bell, 1993). Since the study focussed on STS issues, teachers were observed  
39  
40 teaching some units from the curriculum content, based mainly on STS issues<sup>1</sup>.  
41  
42  
43  
44  
45

### 46 **Data Analysis**

47  
48  
49  
50  
51 The main aim of this research was to build a theory or a model to understand how  
52  
53 teachers' beliefs are shaped or reshaped and to ascertain the role of teachers'  
54  
55 experiences and personal religious beliefs in this shaping process. A theory is a  
56  
57 particular type of interpretive framework, and qualitative data analysis involves a  
58  
59

60  

---

<sup>1</sup> For example, lessons were chosen from Unit 1 ('Environment and its Resources') in the first preparatory level book, entitled *Science and the Future*, and from Unit 2 ('Environmental Balance and Variation') in the second preparatory level book, entitled *You and Science*.

1  
2  
3 number of systematic procedures and techniques for developing and testing theories.  
4  
5 The principles of grounded theory were adapted in this study to build a theory or  
6  
7 model.  
8  
9

10  
11  
12 Grounded theory (GT) offers a pure approach, in contrast to a theory-driven deductive  
13  
14 analysis. Stem (1980) pointed out that grounded theory provided a method for  
15  
16 investigating previously unrehearsed areas. This makes the case for theory generation  
17  
18 stronger than the case for theory verification. The original grounded theorists warned  
19  
20 against reading literature concerning other theories before performing data collection  
21  
22 and data analysis (Glaser & Strauss, 1967: 37). GT has been criticised for this pure  
23  
24 emergent procedure (Ezzy, 2002; Goldkuhl & Cronholm, 2003; Lind & Goldkuhl,  
25  
26 2005). In particular, development of an isolated theory, as in GT, does not take  
27  
28 acknowledge that the development of knowledge is a cumulative process. Goldkuhl  
29  
30 & Cronholm (2003) argued that it was important to relate an evolving theory to  
31  
32 relevant research during the generation process since this could improve the theory. In  
33  
34 this study, a Multi-Grounded Theory (MGT) approach which involves both 'empirical  
35  
36 grounding' and 'theoretical grounding' was used to analyse the data. MGT is a  
37  
38 sophisticated model of grounded theory that deepens both inductive and deductive  
39  
40 methods of theory generation (Ezzy, 2002).  
41  
42  
43  
44  
45  
46  
47  
48  
49

50  
51 Analysis of the data occurred in two stages (Figure 1). Stage One, the 'theory  
52  
53 generation stage' aimed to develop 'empirical theory' based mainly on the data. The  
54  
55 processes of this stage, which mostly followed GT, included:  
56

- 57 1. Inductive coding which corresponds to open coding in GT;  
58  
59  
60

- 2
  - 3
  - 4
  - 5
  - 6
  - 7
  - 8
  - 9
  - 10
  - 11
  - 12
  - 13
  - 14
  - 15
  - 16
  - 17
  - 18
  - 19
  - 20
  - 21
  - 22
  - 23
  - 24
  - 25
  - 26
  - 27
  - 28
  - 29
  - 30
  - 31
  - 32
  - 33
  - 34
  - 35
  - 36
  - 37
  - 38
  - 39
  - 40
  - 41
  - 42
  - 43
  - 44
  - 45
  - 46
  - 47
  - 48
  - 49
  - 50
  - 51
  - 52
  - 53
  - 54
  - 55
  - 56
  - 57
  - 58
  - 59
  - 60
2. Conceptual refinement where critical reflection on empirical statements is conducted;
  3. Building categorical structures which involves combining categories into theoretical statements corresponding to axial coding in GT) and
  4. Theory condensation, which matches selective coding in GT.

Stage Two, the 'Explicit grounding Stage' was based on matching the empirical theory with existing theories in the literature related to the phenomenon being studied.

### **Figure 1. Procedures for generating the Personal Religious Beliefs model using Multi-Grounded Theory**

To avoid repetitiveness in describing the data analysis procedures, the following section (data analysis and discussion of the results) also explains how GMT was used during the process of data analysis and theory generation. The evolution of the PRB model is presented in two integrated sections. The first ('Data results – developing the empirical theory') introduces the development of the study's codes, and the second ('discussion of the study – the evolving theory') shows how the PRB model that was developed matches existing theories.

#### **Data results and developing the empirical theory**

Table 2 exemplifies the first stage of the analysis and outlines how the theoretical coding of 'personal religious beliefs' emerged from the data. The initial process of data analysis was done inductively by using an incident-to-incident coding technique (Charmaz, 2006) (see some examples of the open coding in Table 2). In 'conceptual refinement', the second process of the analysis, a critical stance was adopted to

1  
2  
3  
4  
5  
6  
7  
8  
9  
10  
11  
12  
13  
14  
15  
16  
17  
18  
19  
20  
21  
22  
23  
24  
25  
26  
27  
28  
29  
30  
31  
32  
33  
34  
35  
36  
37  
38  
39  
40  
41  
42  
43  
44  
45  
46  
47  
48  
49  
50  
51  
52  
53  
54  
55  
56  
57  
58  
59  
60

examine the views that participants had expressed. At this point, which was a very important stage in the data analysis, every category that was developed was reflected upon with regard to its ontological status (Lind & Goldkuhl, 2005). The main aim as stated above was to understand the role of experiences in general, and of religious experiences in particular, in shaping teachers' beliefs and practices.

Related to this was the attempt to understand how the teachers interpreted these experiences and how they functioned on the basis of this understanding. To deal with such a critical position, the ontological categories of the socio-instrumental pragmatism framework (Goldkuhl & Cronholm, 2003) were used. These categories include: human inner worlds (knowledge, intentions, emotions, interest, etc); human actions; intervention-as-action; interpretation-as-action; reflection-as-action; symbolic objects (signs); artefacts (artificially-made material objects and their processes); and natural environment (objects and processes). This stage indicated that that interpreting and evaluating an experience was common among the participants and that participants also had a commitment to act on, or carry out their interpretation (see some examples of the 'the conceptual refinement' process in Table 2).

The third process of the data analysis was building categorical structures (an axial coding), in which categories are combined into theoretical statements. In this stage, the data analysis focused on understanding how the categories related to each other, as well as on defining the direction of the relationship from one category to other. In comparing and linking the categories with one another, I was guided by what Glaser called "the Six Cs: Causes, Contexts, Contingencies, Consequences, Covariances, and Conditions" (1978: 74). For example, what are the relationships between the different

1  
2  
3 kinds of experiences? Which is the most influential kind of experience? What are the  
4  
5 consequences of that predominant category on the other categorises? Under what  
6  
7 conditions do teachers form positive or negative religious experiences? In what  
8  
9 context do teachers form religious experiences?  
10  
11

12  
13  
14  
15 To achieve the aim of this stage, I adapted a socio-pragmatic approach in MGT, based  
16  
17 on 'the action paradigm model' defined by Strauss and Corbin (1998), who stated that  
18  
19 grounded theory was an action and an interactional method of theory building. They  
20  
21 used several generic notions related to action explanations, such as causal and  
22  
23 intervening conditions, context, action/ interactional strategies, and consequences.  
24  
25 Pettigrew (1989) claimed that this provided an opportunity for examining continuous  
26  
27 processes in context, in order to draw out the significance of various levels of analysis  
28  
29 and thereby reveal the multiple sources of loops of causation and connectivity, so  
30  
31 crucial to identifying and explaining patterns in the process of change. This process of  
32  
33 coding revealed that teachers were influenced by three kinds of experience: teacher  
34  
35 education at university, past school experience, and out of school experience mainly  
36  
37 concerned with family (see 'building categorical structures' in Table 2).  
38  
39  
40  
41  
42  
43  
44  
45

46 **Table 2. Emergence of the theoretical coding 'Personal Religious Beliefs'**  
47  
48  
49

50 The data also showed that knowledge of STS came mainly from informal sources,  
51  
52 while personal religious beliefs were associated with different aspects of  
53  
54 teaching/learning STS issues. These included religious epistemology, personal  
55  
56 religious views about science, personal religious views about the curriculum, personal  
57  
58 religious views about the aim of science, personal understandings of religion, personal  
59  
60 religious views about teaching and learning STS and the characteristics of Muslim

1  
2  
3 science teachers. The main subcategorises related to teachers' beliefs about  
4 teaching/learning STS issues included the epistemology of science, teaching/learning  
5 STS issues, the science curriculum and teachers' roles and practices. Some practices  
6 were consistent with beliefs, while others were inconsistent.  
7  
8  
9  
10  
11

12  
13  
14  
15 In contrast with MGT procedures proposed by (Goldkuhl & Cronholm (2003:11) in  
16 which the 'condensing theory' process is carried out during the 'explicit grounding  
17 stage' the condensing categories process, or 'theoretical coding', was conducted  
18 during the stage of developing empirical theory. At the explicit grounding stage, the  
19 theory was neither ready nor sufficiently stable to confront other theories. Condensing  
20 categories at an early stage of its development ('building categorical structures')  
21 might have destroyed the theory or, at the very least, influence the way it was  
22 developed. Instead 'theoretical coding' as described by Glaser (1978) was used to  
23 investigate the possible relationships developed between categories in the 'building  
24 categorical structures' before the 'matching theory' process was begun. Some of  
25 Glaser's theoretical coding families were used in this process; these included  
26 analytical categories such as 'social contexts', 'consequences', 'identity' and  
27 'cultural'. Glaser (1978) explains that these codes serve as units of analysis but  
28 connote emergent, rather than structural properties. This stage ended with the  
29 production of an 'empirical theory', which was ready now to be matched with the  
30 existing theories. The analysis indicated that five main categorises emerged from the  
31 data. These were: teachers' personal religious beliefs; teachers' social contexts;  
32 teachers' experiences; teachers' pedagogical beliefs; and teachers' practices. The  
33 analysis also showed that on the whole, teachers' beliefs were shaped by many  
34 sources of experience including teacher education, in-school life experiences, "past  
35  
36  
37  
38  
39  
40  
41  
42  
43  
44  
45  
46  
47  
48  
49  
50  
51  
52  
53  
54  
55  
56  
57  
58  
59  
60

1  
2  
3 school experiences”, out-of-school life experiences, and personal religious beliefs.  
4  
5 The latter was one of the strongest determinants of teachers’ beliefs and practices.  
6  
7  
8  
9

10 Theory diagrams were used to present the ‘empirical theory’ model or theory (see  
11 Figure 2). These diagrams can be seen as models of the focused issue and its action  
12 context (Axelsson & Goldkuhl, 2004). In the theory diagrams, the research used  
13 different labels to indicate the role of each category within the action chain, such as  
14 ‘precondition’ or ‘action’. These labels were derived from the action-oriented model.  
15  
16 In this way, the theory diagram gave a more distinctive picture of the preconditions,  
17 actions, results, and effects associated with its action focus (Axelsson & Goldkuhl,  
18 2004).  
19  
20  
21  
22  
23  
24  
25  
26  
27  
28  
29  
30  
31  
32  
33

34 **Figure 2. A ‘Theory diagram’ illustrating the sequence of the main categories**  
35 **‘empirical theory’**  
36  
37

38  
39 The relationships between and evidence for these main categories is illustrated by  
40 examples of the verbatim quotations from the transcripts which are set out below in  
41 two parts. These show how the teachers’ pedagogical beliefs were influenced by the  
42 formal and informal learning experiences, which shaped their Personal religious  
43 beliefs, and how, in turn, these beliefs influenced their actual practices.  
44  
45  
46  
47  
48  
49  
50  
51

52 *Part One: Personal religious beliefs and teachers’ formal and informal*  
53 *experiences*  
54

55  
56  
57 *Personal religious beliefs and science teacher education*  
58  
59  
60

1  
2  
3 Some of the participants were critical of their pre-service teacher education  
4  
5 experiences. For example, teacher C commented:  
6  
7

8  
9 Teacher education was a waste of time, a joke. It didn't give us enough actual  
10 teaching experience; I couldn't see any relevance about what we were taught at  
11 university and what we teach now, especially regarding STS topics. (T/C)  
12

13  
14 He further clarified:  
15

16  
17 What I understand about these issues is that there is a relationship between  
18 science and religion but where is the role of teacher education here? (T/C)  
19

20  
21  
22 Teacher (F) added:  
23

24  
25 When we went to do our school practice, we faced situations that were different  
26 from those, which we were trained for, especially when we started to teach  
27 something like cloning, which is sensitive and is related to our religious beliefs.  
28 We got nothing from university or in-service training. (T/F)  
29

30  
31  
32 Participants also criticized the university courses. Teacher B noted:  
33

34  
35 Before I started at the university, I expected to study science from a religious  
36 perspective. That never happened. However, I put a lot of effort into collecting  
37 information and verses from the Holy Qur'an so that I could explain the values  
38 and morals behind learning science to my students. (T/B)  
39

40  
41  
42 Other participants indicated that university staff influenced their beliefs about science:  
43

44  
45 The professors of chemistry and physics from the Faculty of Science made me  
46 like science and believe in its value. Those professors were models for me  
47 because they devoted their lives to studying phenomena in the laboratory, and  
48 they also persisted in getting us to apply what we had learnt. For instance, a  
49 physics professor used to say to us, 'As a physics teacher you should be capable  
50 of repairing any broken machine in your house....Our Islamic religion motivates  
51 us to help others without expecting to get something back... Our prophet  
52 Muhammad taught us that God supports people when they help other. (T/F)  
53

#### 54 55 *Personal religious beliefs and past school experiences* 56

57  
58  
59 Other participants indicated that school teaching staff influenced not only their beliefs  
60 about science but also the way they later taught science to their students:

1  
2  
3  
4  
5  
6 Here teacher E commented:  
7

8  
9 The model I never forget is Mrs [name deleted by researcher] who taught us  
10 biology and who used to relate science to religion. On one occasion she taught us  
11 how important water is for everything. Here teacher E read a verse from the  
12 Qur'an<sup>2</sup>: "...God has sent down water down from the sky. "With it have We  
13 produced diverse pairs of plants each separate from the others" [Qur'an 20: 53].  
14 She also read the verse: "And Allah has created every animal from water:..."  
15 [Qur'an 24:45].

16 Then she added:  
17

18  
19 I did like this way of teaching. I took her as a model for my own teaching, I do  
20 believe that everything is found in the Holy Qur'an and it is very easy to make the  
21 students understand or like science by using this Islamic approach to teaching  
22 science, especially with regard to controversial issues. (T/E)  
23

24  
25  
26 Teacher G gave another example:  
27

28  
29 I remember my biology teacher at secondary school. She was a fantastic teacher;  
30 as students we all liked her. So I imitated not just her teaching style but also the  
31 way that she dealt with the students. (T/G)  
32

33  
34 In reply to my question about the ways in which her teacher was fantastic, she added:  
35

36  
37 She used to simplify the controversial issues and discuss them from different  
38 aspects – religiously, scientifically, and socially. (T/G)  
39

#### 40 41 *Personal religious beliefs and life-out-of-school experiences* 42

43  
44  
45 The analysis revealed that early-out-of school experiences were potentially influential  
46 in shaping teachers' beliefs about learning and teaching STS. Teacher B saw his  
47 family as having a major effect on his teaching and his dealings with his students:  
48  
49

50  
51  
52 My parents are religious people. They brought me up according to the concepts of  
53 respect for the opinions of others, equality, responsibility, teamwork, trust, and  
54 patience. So, when I teach a lesson like 'pesticide use', which can be a  
55 controversial issue, I try to be objective, and stress to all my students that we  
56 should give everybody a chance to express his views freely and that all opinions  
57 are important. I try to teach my student what I learnt from my family – which is  
58 how to argue any controversial issue. (T/B)  
59  
60

---

<sup>2</sup> The English translations of the Qur'anic Verses are based on Ali (2004).

1  
2  
3 Teacher A spoke about the same topic:  
4  
5

6 My father used to bring us honey and encourage us to eat it every day. He told me  
7 about the benefits of the honey which are mentioned in the Holy Qur'an and  
8 which scientists discovered much later. He used to read to us from the Qur'an:  
9 "And Your Lord taught the Bee to build its cells in hills, on trees, and in (men's)  
10 habitations" [Qur'an 16: 68] "Then to eat of all the produce (of the earth), and  
11 find with skill the spacious paths of its Lord: there issues from within their bodies  
12 a drink of varying colours, in which is healing for men: verily in this there is a  
13 Sign for those who give thought" [Qur'an 16: 69]  
14

15  
16  
17 Teacher (A) then explained how this had influenced his attitude toward teaching/  
18  
19 learning science:  
20  
21

22 As a result of this, I started to question the relationship between the Qur'an and  
23 science, and between science and society, and when I became a science teacher I  
24 started to use that approach in my teaching. I found it an influential approach,  
25 especially in making the students learn science and have a positive attitude toward  
26 science. (T/A)  
27  
28  
29

30 *Part Two: the teachers' Personal Religious Beliefs and their relationship to*  
31 *pedagogy and practice*  
32  
33

34  
35 Joint analysis of the interviews and the classroom observations revealed that teachers'  
36  
37 beliefs regarding the epistemology of science, their roles, the students' roles, the aims  
38  
39 of science and their teaching methods were strongly shaped by, and intertwined with,  
40  
41 personal religious beliefs.  
42  
43  
44

45  
46  
47 *Personal religious beliefs and epistemology of science*  
48  
49  
50

51 Islamic-religious experiences clearly influenced teachers' views concerning the nature  
52  
53 and purpose of science. Science was not perceived as a divine revelation but as a  
54  
55 means of promoting the wellbeing of humankind and providing a better understanding  
56  
57 of the creation of Allah. Teacher (F) said:  
58  
59  
60

What I know about 'Ilm' [science] is that it means knowledge and we study it  
because our religion, 'Islam' encourages us incessantly to pursue knowledge. For

1  
2  
3 example in the Qur'an, Allah ordained His servants to pray to Him thus: "High  
4 above all is Allah, the King, the truth! Be not in haste with the Qur'an before its  
5 revelation to you is completed, but say, O my Lord! Advance me in knowledge".  
6 [Qur'an 20: 114] (T/F)  
7  
8  
9

10 Teacher (I) views Islam as:

11  
12 ...a religion based upon knowledge, for it is eventually knowledge of the Oneness  
13 of God, combined with faith and total confidence in Him that saves man. (T/I)  
14  
15  
16

17  
18 I asked her why she chose inquiry to be her best way of teaching science. In reply she  
19  
20 said:  
21

22  
23 The wording of the Qur'an is full of verses inviting man to use his mental powers,  
24 to wonder about things, to think, and to know, since the goal of human life is to  
25 discover the truth. (T/I)  
26  
27

28 Teacher (H) had a remarkable view about the relationship between science and  
29  
30 religion:  
31

32  
33 Science... shouldn't be subordinate to culture but at the same time it shouldn't  
34 contradict religious concerns. If such a contradiction appears, it is merely an  
35 apparent contradiction that results from a misunderstanding of the scientific  
36 phenomenon of the religious text. The religious text is stable and untouchable.  
37 Thus, if science contradicts religion, the scientist should review the phenomenon  
38 and try to understand it correctly. Science can change a society's culture but not  
39 its religion. Rather, science can help people understand religion. (T/H)  
40  
41  
42

43 And, as teacher D remarked:

44  
45  
46  
47 Scientists throughout the world should study the Holy Qur'an as their starting  
48 point. The Qur'an is full of scientific meanings. (T/D)  
49  
50

51 *Personal religious beliefs and beliefs about teaching/learning*  
52

53  
54  
55 Teachers' personal religious beliefs or their interpretation of Qur'anic views clearly  
56  
57 influenced their pedagogical beliefs, which in turn, powerfully affect their practices.  
58  
59  
60

1  
2  
3  
4  
5  
6  
7  
8  
9  
10  
11  
12  
13  
14  
15  
16  
17  
18  
19  
20  
21  
22  
23  
24  
25  
26  
27  
28  
29  
30  
31  
32  
33  
34  
35  
36  
37  
38  
39  
40  
41  
42  
43  
44  
45  
46  
47  
48  
49  
50  
51  
52  
53  
54  
55  
56  
57  
58  
59  
60

*Issues related to teaching*

For example, when asked about the teaching of cloning, the following comments were made:

The main consideration is our society is an Islamic one. For this reason, I should initiate the lesson on cloning with an Islamic introduction beginning with the Qur'anic verse that there should be husbands and wives or males and females. While I am explaining the lesson, I will confirm that we can take from cloning what is positive and leave what is negative. What is positive is that we can use cloning with plants and other living things rather than with humans. (T/C)

Cloning is very dangerous to the human being and to society. I am not happy to teach this issue at all. However, if I have to, I will present the Islamic view regarding the idea behind reproductive principles. This is based on the union of the mother's ovum and the sperm of her legally married husband....The best teaching methods will be lectures. So, I can be on the safe side and won't upset religion or put myself in hell. Religion comes first, then science. (T/J)

Religion is the basis for evaluating controversial issues. This is because science is changing while religion remains constant... If science and religion conflict with regard to a given issue, religion should win. (T/A)

Teachers' personal religious beliefs also influenced their learning aims and how they achieved them. Teacher (D), for example, said:

My main aim for an issue like cloning will be to analyse and show the students the scientific information on cloning, as well as evaluating the moral and ethical implications associated with it [cloning] from an Islamic point of view. (T/D)

Teacher (D) suggested this sequence for teaching this issue:

I will discuss with the students their definition of cloning and we write down their definitions on chart paper. Next, I get the students to debate their own positions on the cloning issue. I talk to the students about what they already know on the subject of cloning. We discuss what things have already been cloned and what they think will be cloned in the future. (T/D)

I asked her what the main point was that she wished to make. She explained this as follows:

1  
2  
3 The message I want to give my students from that lesson is that just because the  
4 scientists succeed in creating something like Dolly the sheep by using the cloning  
5 process, they do not become creators like Allah, our God....I would explain this  
6 by using the analogy method; first of all I will start by saying that Allah  
7 established the system of cause-and-effect in this world. For example, sowing a  
8 seed in the ground is the cause but only Allah produces the effect from it, in the  
9 form of a plant. Similarly cloning is a cause and only through Allah's will it can  
10 produce the effect. Just as the person sowing the seed is not the creator of the  
11 resulting plant, so the cloning technician is not the creator of the resulting animal.  
12 Allah alone is the Creator and all creation takes place solely through His Will.  
13 (T/D)

### 14 15 16 *Issues related to the science curriculum*

17  
18  
19  
20 Teachers' personal religious beliefs influence their views about the science  
21 curriculum and about involving controversial issues in the science curricula. One felt  
22 that:  
23  
24  
25  
26  
27

28 The science curriculum should be designed on the basis of the scientific events  
29 presented in the Holy Qur'an; it should also be based on the principles of our  
30 Islamic religion and should omit any controversial issues that are against Islam....  
31 Sometimes, I feel really concerned about having to teach these controversial  
32 issues. I am very religious. It worries me when I'm teaching that these issues are  
33 going to have a negative influence on the students' religious beliefs. If I can I will  
34 leave it to teachers who teach religion. (T/B)

35  
36  
37  
38 Two teachers expressed a contrasting view:

39  
40  
41  
42 Teaching means dealing with controversial issues that are also very interesting  
43 issues. By teaching such issues we have the chance to teach our students the  
44 correct view of the relation between Islam and science. I consider this to be a  
45 form of religious education, which is my duty as a Muslim, and I think it is the  
46 main role of teaching science as well. (T/C)

47  
48  
49 If there is a contradiction with scientific theories, such as 'evolution theory', the  
50 curriculum should present this clearly and support the Islamic view, using  
51 Qur'anic verses, towards such issues to teach our students the relationship  
52 between science and Islam. We can also teach them how they can argue a point.  
53 (T/I)

54  
55  
56 Teacher (H) criticised the current science curriculum:

57  
58  
59 We should have our own science curriculum. The science curricula that we have  
60 now are filled mostly with western scientists. We have Muslim scientists too, and

1  
2  
3 we should give our students Muslims scientists as models who they can emulate.  
4 (T/H)  
5

6 *Issues related to teachers' roles*  
7  
8  
9

10 Teachers' personal religious beliefs influence their views about their own and their  
11  
12 students' roles in the classroom.  
13  
14

15  
16 I don't listen to the students' opinions regarding this issue [cloning] because the  
17 students don't have sufficient information about it. [Furthermore] in such  
18 controversial lessons, the teacher's role is to correct the students' misconceptions  
19 from the Islamic perspective. (T/C)  
20  
21

22  
23 Some teachers tried to shape students' attitudes and opinions to concur with their own  
24  
25 understanding of religious views:  
26  
27

28  
29 If the opinion relates to religion, there is no controversy about it. A religious  
30 belief is presented directly. Away from religious affairs, the teacher shouldn't  
31 impose his opinions on the students. I don't voice my opinion myself, so students  
32 can express their own views freely without being influenced by the opinion that I  
33 give. Of the opinions of scientists, I present only the opinions that conform to our  
34 religion and society. (T/A)  
35  
36

37  
38 *Personal religious beliefs and classroom practices*  
39  
40  
41

42 Observations by teachers on science lessons that were based mainly on STS content,  
43  
44 indicated that personal religious beliefs affected their practices in relation to  
45  
46 pedagogical beliefs in general, and subject-specific pedagogical beliefs in particular.  
47  
48 For example, one used co-operative learning to teach STS issues such as education  
49  
50 about 'drugs':  
51  
52

53  
54  
55 ... because I wanted them to feel and learn the concept of co-operation as it comes  
56 in the Holy Qur'an (T/F)  
57

58 She recited a verse from the Qur'an about help and co-operation between people:  
59  
60

1  
2  
3 “Help you one another in righteousness and piety, but help you not one another in  
4 sin and rancour; fear Allah; for Allah is strict in punishment” [Qur’an, 5: part of  
5 verse 2].  
6  
7

8  
9 Most of the teachers tried to start their science lessons with an appropriate verse (from  
10 the Qur’an) or ahadith (sayings of the Prophet). For example, when he taught the unit  
11 about ‘water’, and in order to explain the idea that water was one of the most valuable  
12 natural elements on Earth, teacher B mentioned that God had said,  
13  
14  
15

16  
17  
18  
19 “We made from water every living thing” [Qur’an 21: part of verse 30]  
20  
21

22  
23 In another lesson on ‘the Atom’, teacher A wrote the following verse on the  
24 blackboard at the beginning of the lesson:  
25  
26

27  
28 “The unbelievers say,” never to us will the hour”: Say, “Nay! But most surely, by  
29 my Lord, it will come upon you – by Him who knows the unseen – from whom is  
30 not hidden the least little atom in the heavens or on earth: nor is there anything  
31 less than that, or greater, but is in the record perspicuous” [Qur’an 34:3].  
32  
33

34  
35 Coloured chalk was used to highlight these words from the verse: ‘atom’, ‘weight’,  
36 ‘nor greater’ and the teacher said that in light of modern scientific findings, “the  
37 smallest possible part of matter” was called a molecule, and began to explain the  
38 structure of an atom by pointing to the words ‘less than’ in the verse. He said that this  
39 meant that an atom included all particles, discovered or undiscovered:  
40  
41  
42  
43  
44  
45

46  
47 I mean by ‘discovered’, nuclei, electrons and protons. And by ‘discovering’, I  
48 mean that by developing and advancing or through tools and methods of research,  
49 more parts or characteristics can be discovered in the future which we don’t yet  
50 know.  
51

52 Then he began to go through the verse in detail, relating it to the subject of the lesson,  
53 although:  
54  
55

56  
57  
58 ...’greater than that’ – that includes chemical compounds, which I will discuss  
59 later.  
60

1  
2  
3 He told his pupils that at the time of Dalton, an atom was the smallest, invisible  
4  
5  
6 particle of matter. This idea was no longer correct so it was necessary to be very  
7  
8 careful when trying to understand the Holy Qur'an in the light of scientific findings.  
9

10 He said:

11  
12  
13 "The Holy Qur'an was a book that could not be doubted" (T/A)  
14  
15

16  
17 Teacher (H) provided another example of how teachers' personal religious beliefs  
18  
19 could affect the way they put their epistemological and pedagogical beliefs into  
20  
21 practice. He began his lesson about 'how water is formed' with this verse from the  
22  
23 Qur'an:  
24  
25

26  
27 "See you not that Allah makes the clouds move gently, then joins them together,  
28 then makes them into a heap? Then will you see rain issue forth from their midst.  
29 And He sends down from the sky mountain masses (of clouds) in which is hail:  
30 He strikes with it whom He pleases and He turns it away from whom He pleases.  
31 The vivid flash of His lightning well-near blinds the sight" [Qur'an, 24:43]  
32  
33

34  
35 At the end of the lesson, teacher (H) told students that the Holy Qur'an contained all  
36  
37 knowledge about the universe. So when it was necessary to understand their  
38  
39 environment they also need to understand the Holy Qur'an very well. Also, water  
40  
41 should be protected from pollution. He reminded them that the Prophet had lived in a  
42  
43 harsh desert environment, where water was equal to life. As a gift from God, water is  
44  
45 the source of all life on earth, as is confirmed in the Qur'an:  
46  
47

48  
49 "Do not the unbeliever see that the heavens and the earth were joined together (as  
50 one unit of creation), before We split them apart? We made from water every  
51 living thing. Will they not then believe" [Qur'an 21:30]  
52  
53

54  
55 Teacher (H) also pointed out that the Qur'an constantly reminded and encouraged  
56  
57 individuals to keep water clean and not to abuse it, and in this connection mentioned  
58  
59 these verses:  
60

1  
2  
3  
4  
5 “See you the water which you drink?” [Qur’an 56: 68];

6 “Do you bring it down (in rain) from the cloud or do We?” [Qur’an 56:69]; and

7  
8 “Were it Our will, We could make it salt (and unpalatable): then why do you not  
9 give thanks?” [Qur’an 56:70].

## 10 11 12 **Discussion and Theoretical grounding of the Personal Religious Beliefs (PRB)**

### 13 14 **Model**

15  
16  
17  
18 This section presents the ‘explicit grounding stage’ of the multi-grounded theory  
19 approach. Using a theory matching process, the empirically derived theory ‘the  
20 Personal Religious Beliefs (PRB) Model’ (see Figure 2) was compared with theories  
21 found in the literature. This process was used to seek internal and external validation  
22 of the PRB Model (Goldkuhl & Cronholm, 2003) and was an interactive comparison  
23 of the derived theory with existing theories.  
24  
25  
26  
27  
28  
29  
30  
31  
32  
33

34  
35 During this ‘theory diagrams’ were used to generate of the PRB model as shown in  
36 Figure 3 arrows were used to represent the relationship between two concepts or two  
37 categories, and the direction of the influence of one on the other. Bold arrows showed  
38 the strong influence of one component on another one. The matching of the  
39 dimensions of a PRB model with the existing theories is presented using the same  
40 sequence that was used to present the data analysis. It begins with the relationship  
41 between teachers’ personal religious beliefs and their experiences and ends with the  
42 relationship between teachers’ personal religious beliefs and their practices.  
43  
44  
45  
46  
47  
48  
49  
50  
51  
52

53  
54  
55  
56 The dimensions of the developed model include:

- 57  
58     ▪ Personal religious beliefs, teachers’ experience and teachers’ interpretation;
- 59  
60

- 1
  - 2
  - 3
  - 4
  - 5
  - 6
  - 7
  - 8
  - 9
  - 10
  - 11
  - 12
  - 13
  - 14
  - 15
  - 16
  - 17
  - 18
  - 19
  - 20
  - 21
  - 22
  - 23
  - 24
  - 25
  - 26
  - 27
  - 28
  - 29
  - 30
  - 31
  - 32
  - 33
  - 34
  - 35
  - 36
  - 37
  - 38
  - 39
  - 40
  - 41
  - 42
  - 43
  - 44
  - 45
  - 46
  - 47
  - 48
  - 49
  - 50
  - 51
  - 52
  - 53
  - 54
  - 55
  - 56
  - 57
  - 58
  - 59
  - 60
- Teachers' interpretations of their experiences and the forming of their pedagogical beliefs;
  - Teachers' pedagogical beliefs, their framework for action and practice;
  - Knowledge and teachers' beliefs and
  - Teachers' identity as a product of the interaction between their personal religious beliefs, experiences, pedagogical beliefs and practices.

The following paragraphs explain these dimensions and match the dimensions of the PRB Model with the existing theories.

*Personal religious beliefs, teachers' experiences and teachers' interpretation*

Analysis of the interviews together with the classroom observations revealed that teachers' beliefs regarding their roles, students' roles, the aims of science and their teaching methods were strongly shaped by personal religious beliefs derived from the values and instructions inherent in the religion. The present study found that teachers' personal religious beliefs worked as a 'schema' which influenced what was perceived (McIntosh, 1995). McIntosh defined a schema as "a cognitive structure or mental representation containing organized, prior knowledge about a particular domain" (1995: 2). He also noted that schemas were built via encounters with the environment 'social context' and could be modified by experience.

The religious schemas of these teachers influence the way they perceive new experiences. Teachers arrange the elements of their social context to reflect the organisation of their own personal religious beliefs or religious schemas. A teacher with personal religious beliefs or religious schemas is more likely to force a religious interpretation on experience than a teacher without such personal religious beliefs or

1  
2  
3 religious schemas. Moreover, teachers with particular personal religious beliefs may  
4 understand the situation or the experience very differently from those without these  
5 personal religious beliefs. However, teachers also hold beliefs about themselves, the  
6 nature of science, the individual students, teaching and learning science through STS,  
7 the nature of the discipline they teach (e.g. STS issues), the social context in which  
8 they live, the school environment in which they work, and the constraints they have to  
9 deal with. These beliefs, in turn, work through the lens of past experiences, since they  
10 are translated into teacher practices within the complex context of the classroom.  
11  
12  
13  
14  
15  
16  
17  
18  
19  
20  
21

22  
23  
24 The findings indicated that experiences prior to teaching STS issues had shaped what  
25 Pinar (1978) called 'the architecture of self', and in turn affected their practices. In  
26 this respect, Butt et al (1992) view an individual's 'architecture of self' (i.e., the  
27 private person) as predominantly influenced and shaped by experiences of context and  
28 situation. In turn, in a cyclic manner, the way a person acts in a situation and a context  
29 may shape and influence it. The present study also supported the idea that teachers'  
30 life experiences and backgrounds affected what they believed, the way they interpret  
31 and interact with their social context (Woods, 1987) and consequently the way they  
32 taught (Clark & Peterson 1986). Studies of the origins of teachers' beliefs indicate  
33 that life experiences are a major contributor to the formation of beliefs (Richardson,  
34 1996). In this respect, Budd Rowe (1996) elaborated further on the idea that the  
35 attitudes, beliefs and feelings formed by past experiences could have a significant  
36 impact on the way in which a teacher might misinterpret the meaning of a situation.  
37  
38 This would result in a warped version of the strategy that failed to provide the type of  
39 learning experience that was intended.  
40  
41  
42  
43  
44  
45  
46  
47  
48  
49  
50  
51  
52  
53  
54  
55  
56  
57  
58  
59  
60

1  
2  
3 The study found, furthermore, that teachers' personal religious beliefs controlled the  
4 gaining of new knowledge and experiences. Ball-Rokeach et al (1984) proposed that a  
5 person's value-related attitudes towards objects and situations and the organisation of  
6 values and beliefs about self, formed a comprehensive belief system that provided an  
7 individual with a cognitive framework, map, or theory. In this respect, the models  
8 explaining the influence of experiences on teachers' beliefs and practices (e.g.,  
9 Knowles, 1992) are largely supported by the findings of this study, which established  
10 that early and teacher-education 'formative experiences' were initially interpreted by  
11 individual teachers through their religious beliefs.  
12  
13  
14  
15  
16  
17  
18  
19  
20  
21  
22  
23  
24  
25  
26

27 In addition, analysis of the interviews showed that teachers' personal Islamic-  
28 religious beliefs embraced their beliefs about what science is, what science should be  
29 for, what STS they should and should not teach, and how STS should be taught. Data  
30 analysis found that personal religious beliefs acted as a filter for new experiences; i.e.,  
31 teachers' understanding or interpretations of Islamic religious beliefs worked as the  
32 criteria or bases for interpretations of the new experiences. In this case, teachers'  
33 understanding of religion determined their understanding of what early experiences  
34 meant to an individual at the time of an event. The findings indicated that other  
35 family, daily life and school experiences were analysed through the lens of teachers'  
36 personal religious beliefs. So, through such beliefs, each teacher had some values that  
37 s/he used to evaluate knowledge that had to be accepted and actions that had to be  
38 taken.  
39  
40  
41  
42  
43  
44  
45  
46  
47  
48  
49  
50  
51  
52  
53  
54  
55  
56

57 The influence of personal religious beliefs on other kinds of experience is represented  
58 in Figure 3 by bold arrows that point from 'personal religious beliefs' to 'teachers'  
59  
60

1  
2  
3 experiences' as well as to shaping teachers' beliefs and practices. The developed PRB  
4  
5 model also shows that personal experiences can affect teachers' personal beliefs.  
6  
7  
8 However, the interactive influence between teachers' experiences and their personal  
9  
10 religious beliefs is not equal. Personal religious beliefs are the stronger influence.  
11

12  
13  
14 *Teachers' interpretations as a link between the experiences and beliefs*  
15

16  
17 The study supported the idea that teachers were not just simply formed or socialized  
18  
19 by their lifetime experiences; they were, in fact, active participants in interpreting  
20  
21 these experiences (Sexton, 2004). According to Knowles (1992), the particular  
22  
23 interpretation assigned to an experience was transformed to a 'schema', which he  
24  
25 defined as "a way of understanding or a cognitive filter and a basis for teacher-centred  
26  
27 classroom practices" (1992: 138). In the present study the term 'instructional schema'  
28  
29 meant a settled system of pedagogical beliefs following the process of filtering by  
30  
31 teachers' previous religious beliefs and experiences. In this respect, the results of the  
32  
33 present study coincided with the arguments of Knowles and Holt-Reynolds (1991)  
34  
35 that teachers' prior experiences had moulded their educational thinking, and that  
36  
37 through the interpretations of these experiences, teachers formed the beliefs that they  
38  
39 used directly to evaluate their own teaching practices. In this vein, there is a  
40  
41 substantial body of literature that highlights the relationship between teachers' beliefs  
42  
43 and their thinking. Beliefs are taken to be psychological constructs that portray the  
44  
45 organization and content of a teacher's thinking which, in turn, influence a teacher's  
46  
47 interpretation of experiences and actions (Kagan, 1992; Nespors, 1987; Pajares, 1992;  
48  
49 Enyedy et al, 2006).  
50  
51  
52  
53  
54  
55  
56  
57  
58  
59  
60

1  
2  
3 The findings of the study also agreed with Knowles (1992) that the interpretation and  
4 subsequent schema developed by an individual with regard to classroom practices and  
5 other relevant experiences, was highly idiosyncratic; individuals experiencing a  
6 singular event would have multiple perspectives on that event. The schema or settled  
7 beliefs determine the manner in which teacher might take certain steps, so that the  
8 schema becomes an evaluative tool for examining teacher practices and is  
9 transformed into a framework for action. As the study shows, teachers who view  
10 science as a body of knowledge rely on textbooks to assist them in transmitting  
11 science knowledge. Also, a teacher who believes that science is merely a body of  
12 knowledge to be acquired will have a very different approach to teaching science  
13 from one who believes science is a way of making sense of the world, of asking  
14 questions and seeking answers, of observing and exploring.

15  
16  
17  
18  
19  
20  
21  
22  
23  
24  
25  
26  
27  
28  
29  
30  
31  
32  
33  
34 These findings concur with Richardson (1996) who found that teachers' beliefs were  
35 among the major constructs driving teachers' ways of thinking and classroom  
36 practices. Johnson (1992) reported research on literacy teaching that supporting the  
37 notion of beliefs tending to shape teachers' instructional practices. That conclusion  
38 was also supported by Schoenfeld (1998), who claimed that teachers' beliefs shaped  
39 what they perceived in any set of circumstances, what they considered to be possible  
40 or appropriate in those circumstances, the goals they might establish in those  
41 circumstances, and the knowledge they might bring to bear in them. So far, the  
42 developed PRB Model (Figure 3) has highlighted the idea that teachers' interpretation  
43 is the link or the transmitter between teachers' experiences and has formed teachers'  
44 beliefs. The PRB model also shows that interactive relationships either between  
45  
46  
47  
48  
49  
50  
51  
52  
53  
54  
55  
56  
57  
58  
59  
60

1  
2  
3 'teachers' experiences' and 'teachers' interpretations', or between 'teachers'  
4 interpretations' and 'teachers' beliefs' are in fact Reciprocal relationships.  
5  
6  
7

8  
9 *Teachers' pedagogical beliefs, their framework for action and practice*  
10

11  
12 The analysis and interpretation of data on the process used by teachers to transfer  
13 teacher beliefs into practice, found that teachers tended to use the history of their own  
14 schooling and in particular, specific teacher role models to guide their own practices.  
15 Maslovaty (2000) noted that a teacher's belief system, crystallised through a cultural  
16 context, resulted in the development of different educational ideologies. Maslovaty  
17 also found that teachers' social value orientation contributed to the choice of strategy  
18 to cope with socio-moral dilemmas (in the present study, the choice of strategy is  
19 called 'framework for action'). However, transforming this framework of action into  
20 real practice in the classroom depended on other contextual factors, e.g., constraints,  
21 school environment, teachers' personal religious beliefs and experiences, and  
22 teacher's identity.  
23  
24  
25  
26  
27  
28  
29  
30  
31  
32  
33  
34  
35  
36  
37  
38  
39  
40

41 This conclusion was supported by Talbert and McLaughlin (1993) who defined the  
42 'context effect' as a notion implying that conditions such as policies, resources,  
43 curricula, goals, values, norms, routines and social relations in the school influenced  
44 teaching and learning outcomes. The PRB model presents the idea of a 'framework  
45 for action' to indicate that teachers intend to enact their beliefs in the classroom. It  
46 also makes clear that other factors limit or facilitate the operation of teachers' plans or  
47 frameworks for action. Figure 3 shows a reciprocal interaction between teachers'  
48 practices and the future framework of action.  
49  
50  
51  
52  
53  
54  
55  
56  
57  
58  
59  
60

1  
2  
3 *Knowledge and teachers' beliefs*  
4  
5  
6

7 The powerful influence of teachers' beliefs in general or teachers' personal religious  
8 beliefs in particular on gaining knowledge related to STS or controversial issues was  
9 highlighted by the findings. However, the settled or developed teachers' beliefs  
10 'schema' acted as an information organizer and priority categoriser, and in turn  
11 controlled the way it could be used. In the interactions between knowledge and  
12 beliefs, beliefs controlled the gaining of knowledge and knowledge influenced beliefs.  
13 This suggested that teachers needed to create their own STS knowledge through a  
14 process of interaction between their existing beliefs and knowledge base, and the new  
15 ideas with which they came into contact (Richardson, 1997). Dadds (1995) and  
16 Lichtenstein, McLaughlin and Knudsen (1992) suggested that increased content  
17 knowledge went hand in hand with increased confidence, while having knowledge  
18 about teaching carried its own kind of authority that had the potential to empower  
19 teachers. This highlighted the significant role of teacher education in involving STS  
20 topics in the current teacher education programme. As shown in Figure 3, there is a  
21 reciprocal interaction between teachers' beliefs and knowledge on one hand, and  
22 between teachers' experience and knowledge on the other.  
23  
24  
25  
26  
27  
28  
29  
30  
31  
32  
33  
34  
35  
36  
37  
38  
39  
40  
41  
42  
43  
44

45  
46 *Teachers' identity as a product of the interaction among their personal religious*  
47 *beliefs, experiences, pedagogical beliefs and practices*  
48  
49

50  
51 The study's findings concurred with those of Cole (1990) and Knowles (1992) that a  
52 teacher's role identity was determined by early family experiences, being young  
53 students, teacher role models, previous teaching experiences, and other significant  
54 prior experiences. However, the current study added teachers' personal religious  
55 beliefs as one of the main formative influences on teachers' identity. As long as a  
56  
57  
58  
59  
60

1  
2  
3 teacher's experience changes daily, his/her identity changes sequentially. This  
4  
5 conclusion agrees with Yerkes (2004), who claimed that, "Identity is not set in stone".  
6  
7 Identity is always changing. A teacher's experiences play an essential role in his or  
8  
9 her identity. Each teacher has different experiences, which is what makes all teachers  
10  
11 unique. Thus, identity and identity construction are ongoing processes.  
12  
13  
14

15  
16  
17 Concerning the dynamic relationship between teachers' identity, experience, beliefs  
18  
19 and context, the study agreed with Wenger (1998) who pointed to five salient aspects  
20  
21 of identity: (1) identity is related to one's personal history; (2) one's identity is also  
22  
23 related to one's experience as negotiated within the context of existing cultural  
24  
25 practices, complete with their categories and cultural histories; (3) identities are  
26  
27 related to membership in communities; (4) people are members of multiple  
28  
29 communities and thus one's identity is at the nexus of these multiple memberships;  
30  
31 and (5) one's identity at a given moment is an interaction between local and global  
32  
33 contexts. This formulation provides bridge between the intensely personal nature of  
34  
35 teaching and its very public and cultural aspects.  
36  
37  
38  
39  
40  
41  
42

### 43 **Figure 3. Personal Religious Beliefs (PRB) Model**

44  
45  
46 Not only do different experiences, and the belief systems that are subsequently  
47  
48 formed, create the basis for teacher role identity; they also determine the (negative or  
49  
50 positive) orientation of that identity. This study also suggests that the nature of  
51  
52 teacher role identity (whether negative or positive) determined the extent of the  
53  
54 influence on the teacher of social constraints or the school environment. The findings  
55  
56 further indicated that pedagogical beliefs and practices were influenced by the results  
57  
58 of the interaction between teacher's identity, and social constraints, or school  
59  
60

1  
2  
3 environment. If a science teacher who has a positive teacher role identity works in a  
4 school environment which there are many constraints (e.g. pressure of examinations,  
5 large classes, lack of resources, students' family background, lack of time, school  
6 administration, etc.), his/her expected practice might be negative traditional practices  
7 or a mix of traditional and constructivist practices. The PRB Model (Figure 3) shows  
8 that teacher identity is a social product of the interaction among personal religious  
9 beliefs, teachers' experiences, teachers' beliefs and teachers' practice. However,  
10 teachers' personal religious beliefs produced the strongest influence on forming  
11 teachers' identity.  
12  
13  
14  
15  
16  
17  
18  
19  
20  
21  
22  
23  
24  
25  
26

27 Teachers (I) and (F) offered a notable example of the relationship between teacher  
28 role identity and teachers' beliefs and practices. Although teacher (I) faced many  
29 constraints on her practice, to some extent she practised as an 'inquiry strategy' when  
30 teaching STS issues. This could have been due to her strong identity. However,  
31 stronger role identities were associated with inquiry practices within these contextual  
32 realities. In the case of teacher (F), although she too faced many problems (e.g. lack  
33 of resources, time, and pressures of examination system) when teaching STS issues  
34 using co-operative learning, to some extent the administrative system, and especially  
35 her colleagues, offered a flexible environment. She was given extra time with her  
36 classes and sometimes colleagues exchanged their classes with her so that she could  
37 have two consecutive periods (110 minutes in total) with one class. Thus, teachers  
38 with strong-positive teacher role identities are better able to deal with the barriers to  
39 implementing innovative practice that teachers have to face.  
40  
41  
42  
43  
44  
45  
46  
47  
48  
49  
50  
51  
52  
53  
54  
55  
56  
57  
58  
59  
60

### **Implications of the present study**

1  
2  
3 This study confirmed that, in the case of teaching science through Science,  
4 Technology and Society, science teachers bring their cumulative-interactive  
5 experiences to the teacher education programme, training programmes, and the work-  
6 place, both in and out of school (Britzman, 1986; Woods, 1987). It is essential that  
7 teacher educators elicit and explore these experiences, and the beliefs and practices  
8 that accompany them (Davies & Rogers, 2000). The findings stressed the dynamic  
9 relationship between teachers' identity, religious experiences, and pedagogical beliefs  
10 and practice. In addition, the study showed that as the experience of the teachers  
11 changed day by day, their identity changed sequentially. These findings have  
12 implications for the planning and organization of both pre-and in-service teacher  
13 education.

14  
15  
16  
17  
18  
19  
20  
21  
22  
23  
24  
25  
26  
27  
28  
29  
30  
31  
32 Experience in teacher education was also shown to be a crucial element in the  
33 development of teachers' professional identities. The PRB model developed by the  
34 present study offers a framework for teachers' professional development which may  
35 be of value to educational institutions that are moving towards a "conceptual change"  
36 approach to teacher education (where teacher experiences and beliefs are taken as the  
37 starting point for introducing new concepts or pedagogies).

38  
39  
40  
41  
42  
43  
44  
45  
46  
47  
48 The study findings showed how the interaction amongst experiences was a significant  
49 factor in understanding the relationship between teachers' beliefs and practices and  
50 how such experiences could shape teachers' identities and in turn, affect their  
51 orientations and practices in the science classroom. Thus, an important activity for  
52 teacher education will be to understand in-service or pre-service teachers' experiences  
53 in general and their religious experiences in particular and to explore their teacher  
54  
55  
56  
57  
58  
59  
60

1  
2  
3 identities. The PRB Model can also work as a tool for evaluating teachers'  
4 experiences before they join an inservice teacher educational programme or before  
5 they begin their training. It could be used to help teachers examine and reflect on their  
6 experiences and identities and channel them into contributing to further development.  
7  
8 This implication was supported by Knowles (1992) who noted that if the negative  
9 aspects of previous experiences were not dealt with, the result would be teachers who  
10 were set to teach in the manner in which they had been taught and would be limited in  
11 the ways in which they could be professionally developed.  
12  
13  
14  
15  
16  
17  
18  
19  
20  
21  
22  
23

24 The study also indicated that most of the teachers' religious experiences related to  
25 teaching controversial issues were from informal sources (family, previous teachers,  
26 the media, etc.). Educational decision makers and science educators around the world  
27 should be made aware that teachers' personal religious beliefs are a highly effective  
28 variable that can have a positive or negative influence on the entire educational  
29 process. It was also shown that teachers' personal religious beliefs could be  
30 considered a positive factor in developing positive attitudes among teachers towards  
31 science and teaching science. It is therefore suggested that decision makers,  
32 curriculum developers and science educators should engage in thoughtful reflection  
33 and discussion about developing various study programmes. These would act as  
34 formal knowledge sources about the relationship between science and religion and  
35 would also train teachers how to debate issues related to science and religion.  
36  
37  
38  
39  
40  
41  
42  
43  
44  
45  
46  
47  
48  
49  
50  
51

52 The study's findings suggested that teachers sometimes created a false contradiction  
53 between Islam and science due to their individual interpretations of the nature of  
54 Islam and science. For many people, there is no separation between religion and all  
55 aspects of life, and, as is well-known, Islam is not only a religion but a way of life.  
56  
57  
58  
59  
60

1  
2  
3  
4  
5  
6  
7  
8  
9  
10  
11  
12  
13  
14  
15  
16  
17  
18  
19  
20  
21  
22  
23  
24  
25  
26  
27  
28  
29  
30  
31  
32  
33  
34  
35  
36  
37  
38  
39  
40  
41  
42  
43  
44  
45  
46  
47  
48  
49  
50  
51  
52  
53  
54  
55  
56  
57  
58  
59  
60

Poole (1996) argued that compatibility was needed between religious education and science education. In cultures where religion has a major influence on people's lives the development of science curricula should be made in a partnership between science educators and religion scholars, especially with regard to social-scientific issues associated with religion. This process would provide opportunities to challenge teachers' personal religious beliefs, to introduce appropriate perceptions of religious attitudes, and to leave the door open for different views and different understandings.

The role of personal religious beliefs and experiences in understanding teachers' beliefs and practices was highlighted in the study's findings. However, there is still a need for a deep understanding of how teachers, through experiences in their private lives and professional contexts, have acquired these personal religious beliefs. This could be done through biographical inquiry, a research approach that helps to make sense of teacher's individual experience and personal religious beliefs and enables discovery of the educational significance and the quality of such experience through its relation to previous and later experiences (Butt et al, 1992).

### **A Final Word**

As stated previously, the argument of this study is not about the influence of the Islamic religion on teachers. Rather it is about teachers' understanding of the Islamic religion and their enactment of this understanding in the science classroom. So, there is a need for regular investigation of teachers' and students' personal religious beliefs to guide them to the right way, as their religion tells them.

1  
2  
3 There is no doubt that Islam encourages science and the gaining of knowledge. Nor is  
4  
5 there any need to defend the Islamic position on knowledge or research. Islam came  
6  
7 to educate and to benefit people's lives. There is no better illustration of the close  
8  
9 links between Islam and knowledge than statements of the Prophet Muhammad, who  
10  
11 said that:  
12

13  
14  
15 "Seeking knowledge is compulsory on every Muslim"; that

16  
17  
18 "Seeking knowledge for one hour is better than praying for seventy years"; and

19  
20  
21 that

22  
23 "Whoever follows a path seeking knowledge, God (Allah) will make his path to  
24  
25 paradise easy."  
26

## 27 **Acknowledgements**

28  
29  
30 I would like to thank Keith Postlethwaite, Nigel Skinner and Jack Priestley for their  
31  
32 helpful and valuable comments on earlier drafts of this manuscript. I would also like  
33  
34 to thank the two anonymous reviewers for their insightful comments which were  
35  
36 helpful in redirecting of the manuscript.  
37  
38  
39

## 40 **References**

41  
42 Adams, P., & G. Krockover (1997). Beginning Science Teacher Cognition and Its

43  
44 Origins in the Pre-service Secondary Science Teacher Program. *Journal of*

45  
46 *Research in Science Teaching*, 34 (6), 633-653.  
47

48  
49 Aikenhead, G. & A. Ryan (1989). *The development of a multiple choice instrument*

50  
51 *for monitoring views on science-technology-society topics*. Saskatoon,

52  
53  
54 Canada: University of Saskatchewan, College of Education.  
55

56  
57 Ali, Yusuf (2004). *The meaning of The Holy Qur'an: English translation*. Birmingham:

58  
59  
60 Islamic Dawah Centre International.

- 1  
2  
3 Author, (anonymous for review process) (2006). The mediating factors between  
4  
5 Egyptian science teachers' beliefs and practices concerning teaching science  
6  
7 through Science-Technology-Society (STS): Implication for science teacher  
8  
9 education, *paper presented at the annual conference of the British*  
10  
11 *Educational Research Association (BERA) at the University of Warwick, UK,*  
12  
13 6-9 September.
- 14  
15  
16 Axelsson, K. & Goldkuhl, G. (2004). Theory Modelling-Action focus when building a  
17  
18 Multi-Grounded Theory. *Accepted to the 3<sup>rd</sup> European Conference on*  
19  
20 *Research Methods in Business and Management (ECRM).*
- 21  
22  
23 Ball-Rokeach, S., M. Rokeach, & J. Grube (1984). *The Great American Values Test.*  
24  
25 New York: Free Press.
- 26  
27  
28 Barnes, D. (1992). The significance of teachers' frames for teaching, In T. Russell &  
29  
30 H. Munby (eds.), *Teachers and Teaching: From Classroom to Reflection.* (pp.  
31  
32 9-32). London: the Farmer Press.
- 33  
34  
35 Bell, J. (1993). *Doing your Research Project.* Buckingham UK: Open University  
36  
37 Press.
- 38  
39  
40 Britzman, D. (1986). Cultural myths in the making of a teacher: biography and social  
41  
42 structure in teacher education. *Harvard Educational Review*, 56 (4), 442-446.
- 43  
44  
45 Budd Rowe, M. (1996). Mounting and maintaining an elementary school science  
46  
47 program: What supervisors can learn from research, In J. Rhoton & P. Bowers  
48  
49 (Eds.), *Issues in Science Education* (pp. 162-166). Arlington VA: National  
50  
51 Science Teachers Association. Butt, R., D. Raymond, G. McCue, & L.  
52  
53 Yamagishi (1992). Collaborative autobiography and the teacher's voice. In I.  
54  
55 F. Godson (Ed.), *Studying Teachers' Lives* (pp. 51-98). London: Routledge.
- 56  
57  
58  
59  
60

- 1  
2  
3 Bybee, R. & T. Mau (1986). Science and technology related global problems: An  
4 international survey of science educators. *Journal of Research in Science*  
5  
6 *Education*, 23 (7), 599-618.  
7  
8  
9  
10 Charmaz, K. (2000). Grounded theory: Objectivist and constructivist methods. In N. K.  
11  
12 Denzin & Y. S. Lincoln (Eds.), *Handbook of Qualitative Research* (2<sup>nd</sup> ed.) (pp. 509-  
13  
14 535). Thousand Oaks, CA: Sage.  
15  
16  
17 Charmaz, K. (2006). *Constructing Grounded Theory: A Practical Guide through*  
18  
19 *Qualitative Analysis*. London: Sage.  
20  
21  
22 Clark, C. M., & P. L. Peterson (1986). Teachers' thought processes. In M. C. Wittrock  
23  
24 (ed.), *Handbook on Research in Teaching* (pp. 255-296). New York:  
25  
26 Macmillan.  
27  
28  
29 Cobern, W. & Loving, C. (2000). Scientific worldviews: A case study of four high  
30  
31 school science teachers. *Electronic Journal of Science Education*, 5 (2),1-26.  
32  
33  
34 Cole, A. L. (1990). Personal theories of teaching: Development in the formative  
35  
36 years. *The Alberta Journal of Educational Research*, 36 (3), 203-222.  
37  
38  
39 Dadds, M. (1995). *Passionate Enquiry and School Development: A story about*  
40  
41 *teacher action research*. London: The Falmer Press.  
42  
43  
44 Davies, D., & M. Rogers (2000). Pre-service primary teachers' planning for science  
45  
46 and technology activities: influences and constraints. *Research in Science and*  
47  
48 *Technological Education*, 18 (2), 215-225.  
49  
50  
51 Drever, E. (2003). *Using semi-structured interviews in small-scale research: A*  
52  
53 *teacher's guide*. The SCRE Centre: University of Glasgow.  
54  
55  
56 Eick, C. & C. Reed (2002). What makes an inquiry-oriented science teacher? The  
57  
58 influence of learning histories on student teacher role identity and practice.  
59  
60 *Science Education*, 86 (3), 401-416.

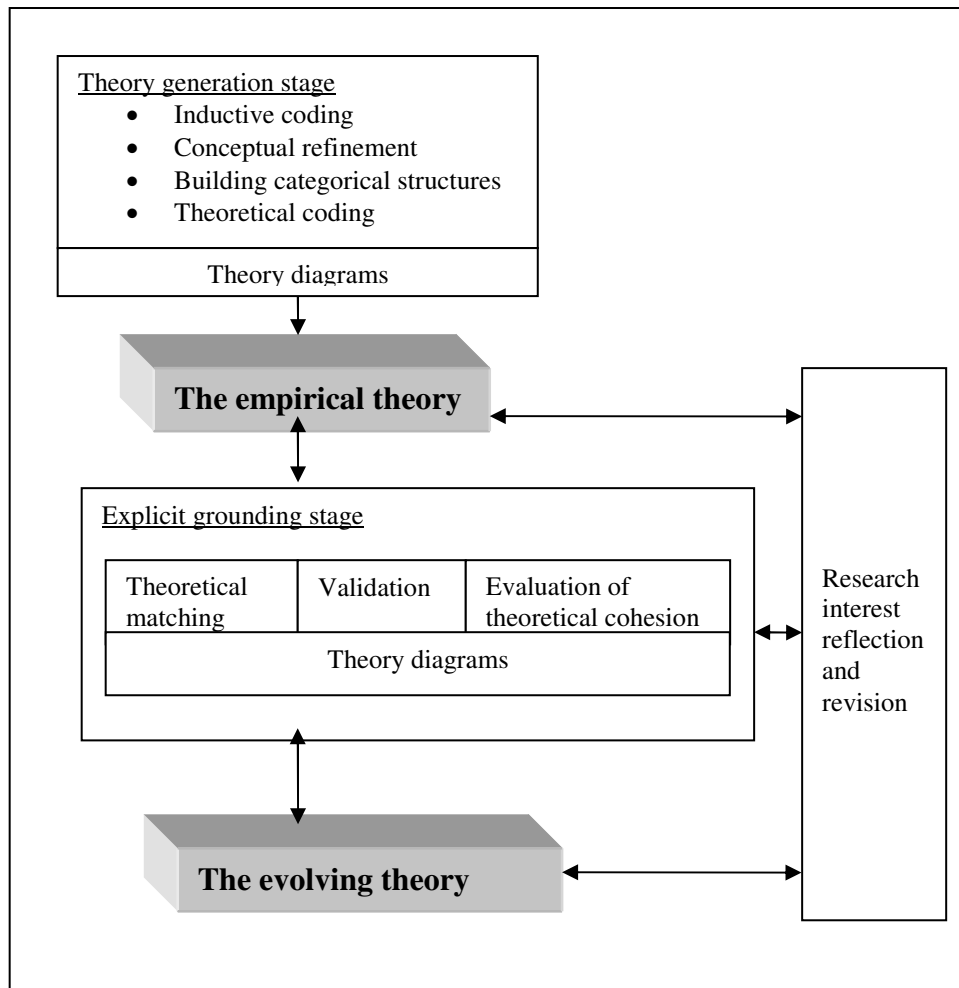
- 1  
2  
3 Enyedy, N., Goldberg, J., Welsh, K. (2006). Complex Dilemmas of identity and  
4  
5 practice. *Science Education*, 90, 68-93.  
6  
7  
8 Ezzy, D. (2002). *Qualitative analysis: Practice and innovation*. London: Routledge.  
9  
10 Foster, P. (1996). Observational Research, In R. Sapsford and V. Jupp (eds), *Data*  
11  
12 *Collection and Analysis* (pp.57-93). Newbury Park CA: SAGE.  
13  
14  
15 Fysh, R. & K. Lucas (1998). Religious beliefs in science classroom. *Research in*  
16  
17 *Science Education*, 28 (4), 399-427.  
18  
19  
20 Glaser, B. G. (1978), *Theoretical Sensitivity*. Mill Valley, CA: The Sociology Press.  
21  
22 Glaser, B. G., & A. L. Strauss (1967). *The Discovery of Grounded Theory: Strategies for*  
23  
24 *Qualitative Research*, Chicago: Aldine.  
25  
26  
27 Goldkuhl, G. & S. Cronholm (2003). Multi-Grounded theory; adding theoretical  
28  
29 grounding to grounded theory. In *Proceedings of the 2nd European*  
30  
31 *Conference on Research Methods in Business and Management (2ECRM)*,  
32  
33 Reading UK, 20-21 March.  
34  
35  
36 Hamilton, M., & V. Richardson (1995). Effects of the culture in two schools on the  
37  
38 process and outcomes of staff development. *Elementary School Journal*, 95,  
39  
40 (4), 367-385.  
41  
42  
43 Johnson, K. (1992). The relationship between teachers' beliefs and practices during  
44  
45 literacy instruction for non-native speakers of English. *Journal of Reading*  
46  
47 *Behavior*, 24 (1), 83-108.  
48  
49  
50 Kagan, D. (1992). Implications of research on teacher belief. *Educational*  
51  
52 *Psychologis*, 27 (1), 65-90.  
53  
54  
55 Knowles, J. G. (1992). Models for understanding pre-service and beginning teachers'  
56  
57 biographies: Illustration from case studies. In I. F. Goodson (Ed.), *Studying*  
58  
59 *Teachers' Lives* (pp. 99-152). London: Routledge.  
60

- 1  
2  
3 Knowles, J.G. and Holt-Reynolds, D. (1991). Shaping pedagogies through personal  
4 histories in pre-service teacher education. *Teachers College Record*, 93, 87-  
5 113.  
6  
7  
8  
9  
10 Levitt, K. E. (2001). An analysis of Elementary teachers' beliefs regarding the  
11 teaching and learning of science. *Science Education*, 86 (1), 1-22.  
12  
13  
14 Lichtenstein, G., M. W. McLaughlin. & J. Knudsen (1992). Teacher empowerment  
15 and Professional knowledge. In A. Lieberman (Eds.), *The Changing Contexts*  
16 *of Teaching* (pp. 37-58). Chicago: The University of Chicago Press.  
17  
18  
19  
20  
21  
22 Lind, M. & G. Goldkuhl (2005). The evolution of a business process theory – the case  
23 of a multi- grounded theory. In J. Von Beekhuizen, L. Hellens, K. Guest, and  
24 M. Morley (Eds), *Proceedings of the Conference on Qualitative Research in*  
25 *IT & IT in Qualitative Research* (QualIT 2005), Brisbane, Australia: Griffith  
26 University.  
27  
28  
29  
30  
31  
32  
33  
34 Lofland, J. & L. Lofland, (1984). *Analyzing social settings: A guide to qualitative*  
35 *observation and analysis* (2<sup>nd</sup> ed.), Belmont, CA: Wadsworth.  
36  
37  
38  
39 Lortie, D. (1975). *Schoolteacher: A sociological study*. Chicago, Illinois: University  
40 of Chicago Press.  
41  
42  
43  
44  
45  
46  
47  
48  
49  
50  
51  
52  
53  
54  
55  
56  
57  
58  
59  
60  
61  
62  
63  
64  
65  
66  
67  
68  
69  
70  
71  
72  
73  
74  
75  
76  
77  
78  
79  
80  
81  
82  
83  
84  
85  
86  
87  
88  
89  
90  
91  
92  
93  
94  
95  
96  
97  
98  
99  
100  
101  
102  
103  
104  
105  
106  
107  
108  
109  
110  
111  
112  
113  
114  
115  
116  
117  
118  
119  
120  
121  
122  
123  
124  
125  
126  
127  
128  
129  
130  
131  
132  
133  
134  
135  
136  
137  
138  
139  
140  
141  
142  
143  
144  
145  
146  
147  
148  
149  
150  
151  
152  
153  
154  
155  
156  
157  
158  
159  
160  
161  
162  
163  
164  
165  
166  
167  
168  
169  
170  
171  
172  
173  
174  
175  
176  
177  
178  
179  
180  
181  
182  
183  
184  
185  
186  
187  
188  
189  
190  
191  
192  
193  
194  
195  
196  
197  
198  
199  
200  
201  
202  
203  
204  
205  
206  
207  
208  
209  
210  
211  
212  
213  
214  
215  
216  
217  
218  
219  
220  
221  
222  
223  
224  
225  
226  
227  
228  
229  
230  
231  
232  
233  
234  
235  
236  
237  
238  
239  
240  
241  
242  
243  
244  
245  
246  
247  
248  
249  
250  
251  
252  
253  
254  
255  
256  
257  
258  
259  
260  
261  
262  
263  
264  
265  
266  
267  
268  
269  
270  
271  
272  
273  
274  
275  
276  
277  
278  
279  
280  
281  
282  
283  
284  
285  
286  
287  
288  
289  
290  
291  
292  
293  
294  
295  
296  
297  
298  
299  
300  
301  
302  
303  
304  
305  
306  
307  
308  
309  
310  
311  
312  
313  
314  
315  
316  
317  
318  
319  
320  
321  
322  
323  
324  
325  
326  
327  
328  
329  
330  
331  
332  
333  
334  
335  
336  
337  
338  
339  
340  
341  
342  
343  
344  
345  
346  
347  
348  
349  
350  
351  
352  
353  
354  
355  
356  
357  
358  
359  
360  
361  
362  
363  
364  
365  
366  
367  
368  
369  
370  
371  
372  
373  
374  
375  
376  
377  
378  
379  
380  
381  
382  
383  
384  
385  
386  
387  
388  
389  
390  
391  
392  
393  
394  
395  
396  
397  
398  
399  
400  
401  
402  
403  
404  
405  
406  
407  
408  
409  
410  
411  
412  
413  
414  
415  
416  
417  
418  
419  
420  
421  
422  
423  
424  
425  
426  
427  
428  
429  
430  
431  
432  
433  
434  
435  
436  
437  
438  
439  
440  
441  
442  
443  
444  
445  
446  
447  
448  
449  
450  
451  
452  
453  
454  
455  
456  
457  
458  
459  
460  
461  
462  
463  
464  
465  
466  
467  
468  
469  
470  
471  
472  
473  
474  
475  
476  
477  
478  
479  
480  
481  
482  
483  
484  
485  
486  
487  
488  
489  
490  
491  
492  
493  
494  
495  
496  
497  
498  
499  
500  
501  
502  
503  
504  
505  
506  
507  
508  
509  
510  
511  
512  
513  
514  
515  
516  
517  
518  
519  
520  
521  
522  
523  
524  
525  
526  
527  
528  
529  
530  
531  
532  
533  
534  
535  
536  
537  
538  
539  
540  
541  
542  
543  
544  
545  
546  
547  
548  
549  
550  
551  
552  
553  
554  
555  
556  
557  
558  
559  
560  
561  
562  
563  
564  
565  
566  
567  
568  
569  
570  
571  
572  
573  
574  
575  
576  
577  
578  
579  
580  
581  
582  
583  
584  
585  
586  
587  
588  
589  
590  
591  
592  
593  
594  
595  
596  
597  
598  
599  
600  
601  
602  
603  
604  
605  
606  
607  
608  
609  
610  
611  
612  
613  
614  
615  
616  
617  
618  
619  
620  
621  
622  
623  
624  
625  
626  
627  
628  
629  
630  
631  
632  
633  
634  
635  
636  
637  
638  
639  
640  
641  
642  
643  
644  
645  
646  
647  
648  
649  
650  
651  
652  
653  
654  
655  
656  
657  
658  
659  
660  
661  
662  
663  
664  
665  
666  
667  
668  
669  
670  
671  
672  
673  
674  
675  
676  
677  
678  
679  
680  
681  
682  
683  
684  
685  
686  
687  
688  
689  
690  
691  
692  
693  
694  
695  
696  
697  
698  
699  
700  
701  
702  
703  
704  
705  
706  
707  
708  
709  
710  
711  
712  
713  
714  
715  
716  
717  
718  
719  
720  
721  
722  
723  
724  
725  
726  
727  
728  
729  
730  
731  
732  
733  
734  
735  
736  
737  
738  
739  
740  
741  
742  
743  
744  
745  
746  
747  
748  
749  
750  
751  
752  
753  
754  
755  
756  
757  
758  
759  
760  
761  
762  
763  
764  
765  
766  
767  
768  
769  
770  
771  
772  
773  
774  
775  
776  
777  
778  
779  
780  
781  
782  
783  
784  
785  
786  
787  
788  
789  
790  
791  
792  
793  
794  
795  
796  
797  
798  
799  
800  
801  
802  
803  
804  
805  
806  
807  
808  
809  
810  
811  
812  
813  
814  
815  
816  
817  
818  
819  
820  
821  
822  
823  
824  
825  
826  
827  
828  
829  
830  
831  
832  
833  
834  
835  
836  
837  
838  
839  
840  
841  
842  
843  
844  
845  
846  
847  
848  
849  
850  
851  
852  
853  
854  
855  
856  
857  
858  
859  
860  
861  
862  
863  
864  
865  
866  
867  
868  
869  
870  
871  
872  
873  
874  
875  
876  
877  
878  
879  
880  
881  
882  
883  
884  
885  
886  
887  
888  
889  
890  
891  
892  
893  
894  
895  
896  
897  
898  
899  
900  
901  
902  
903  
904  
905  
906  
907  
908  
909  
910  
911  
912  
913  
914  
915  
916  
917  
918  
919  
920  
921  
922  
923  
924  
925  
926  
927  
928  
929  
930  
931  
932  
933  
934  
935  
936  
937  
938  
939  
940  
941  
942  
943  
944  
945  
946  
947  
948  
949  
950  
951  
952  
953  
954  
955  
956  
957  
958  
959  
960  
961  
962  
963  
964  
965  
966  
967  
968  
969  
970  
971  
972  
973  
974  
975  
976  
977  
978  
979  
980  
981  
982  
983  
984  
985  
986  
987  
988  
989  
990  
991  
992  
993  
994  
995  
996  
997  
998  
999  
1000



- 1  
2  
3 Richardson, V. (1997). Constructivist teaching and teacher education: theory and  
4  
5 practice, in: V. Richardson (Ed.), *Constructivist Teacher Education: building*  
6  
7 *new understandings* (pp. 3–14). London, Falmer.  
8  
9  
10 Richardson, V. (2003). Pre-service teachers' beliefs. In J. Raths & A. McAninch  
11  
12 (Eds.), *Teacher Beliefs and Classroom Performance: the impact of teacher*  
13  
14 *education* (pp. 1-22). USA: Information Age Publishing Inc.  
15  
16  
17 Rubba, P. A. & Harkness, W. L. (1993). Examination of pre-service and in-service  
18  
19 secondary science teachers' beliefs about Science-technology-society  
20  
21 interactions. *Science Education*, 77 (4), 407-431.  
22  
23  
24 Schoenfeld, A.H. (1998) Toward a theory of teaching-in-context, *Issues in Education*,  
25  
26 4(1), 1-94.  
27  
28 Sexton, S. S. (2004). Prior Teacher Experiences Informing How Post-Graduate  
29  
30 Teacher Candidates See Teaching and Themselves in the Role as the Teacher.  
31  
32 *International Education Journal*, 5 (2), 205-214.  
33  
34  
35 Shulman, L. S. (1987). Knowledge and teaching: foundation of the new reform.  
36  
37 *Harvard Educational Review*, 57 (1), 1-22.  
38  
39  
40 Stem, P. (1980), Grounded theory methodology: its uses and processes, *Image*, 12,  
41  
42 (1), 20-33.  
43  
44  
45 Strauss, A. & Corbin, J. (1998). *Basics of qualitative research: Grounded theory*  
46  
47 *procedures and techniques* (2<sup>nd</sup> Ed.), Thousand Oaks, CA: Sage.  
48  
49  
50 Talbert, J. E. & McLaughlin, M. W. (1993). Understanding teaching in context, In:  
51  
52 M.W. McLaughlin & J. E. Talbert (Eds.), *Teaching for understanding* (pp. 162-  
53  
54 206). San Francisco: Jossey-Bass.  
55  
56  
57 Tsai, C. (2001). A science teacher's reflections and knowledge growth about STS  
58  
59 instruction after actual implementation. *Science Education*, 86 (1), 23-41.  
60

- 1  
2  
3 Wenger, E. (1998). *Communities of Practice: learning, meaning and identity*.  
4  
5 Cambridge, UK: Cambridge University Press.  
6  
7  
8 Woods, P. (1987). Life histories and teacher knowledge, In J. Smyth (Ed.), *Educating*  
9  
10 *teachers changing the nature of pedagogical knowledge* (121-135). London:  
11  
12 The Falmer Press.  
13  
14  
15 Yerkes, K. (2004). *Exploring Teacher Identity: A Yearlong Recount of Growing from*  
16  
17 *Student to Teacher*. Retrieved, May 14, 2005, from:  
18  
19 <http://www.ed.psu.edu/englishpds/inquiry/projects/yerkes04.htm>.  
20  
21  
22 Zeichner, K. (1980). Myths and realities field-based experiences in pre-service  
23  
24 teacher education. *Journal of Teacher Education*, 31 (6), 45-47.  
25  
26  
27  
28  
29  
30  
31  
32  
33  
34  
35  
36  
37  
38  
39  
40  
41  
42  
43  
44  
45  
46  
47  
48  
49  
50  
51  
52  
53  
54  
55  
56  
57  
58  
59  
60



**Figure 1. Procedures for generating the Personal Religious Beliefs model using Multi-Grounded Theory**

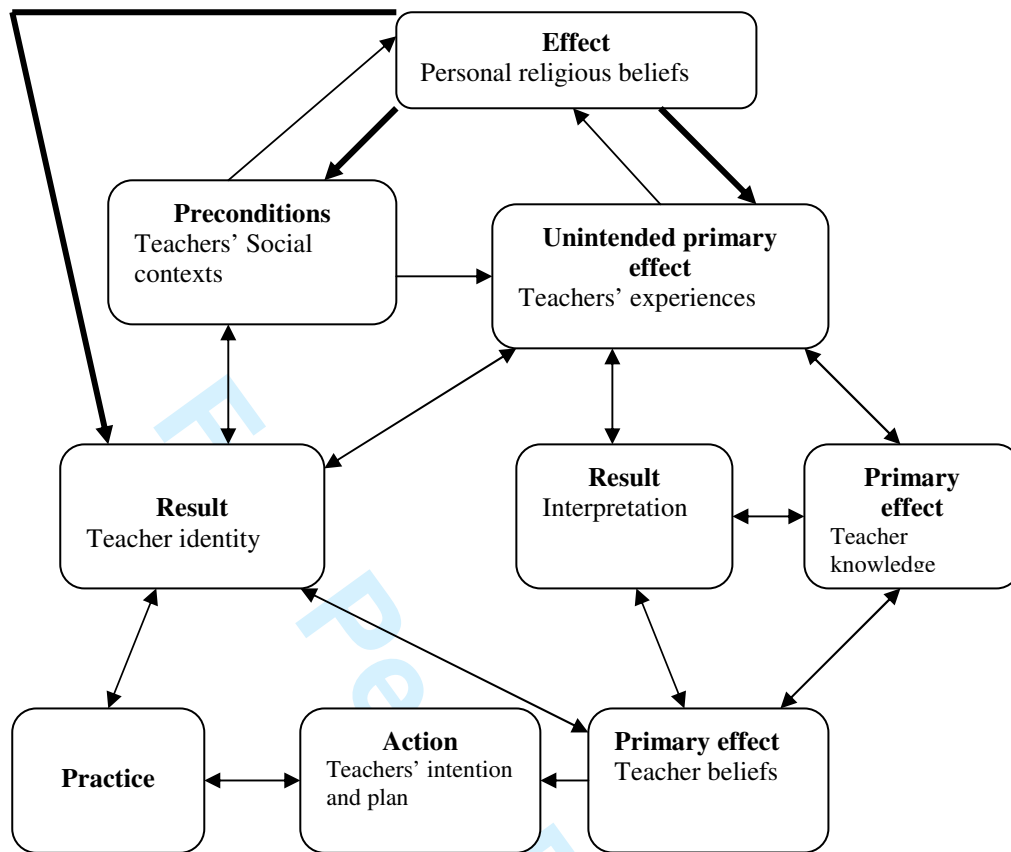


Figure 2. A 'Theory diagram' illustrating the sequence of the main categories 'empirical theory'

1  
2  
3  
4  
5  
6  
7  
8  
9  
10  
11  
12  
13  
14  
15  
16  
17  
18  
19  
20  
21  
22  
23  
24  
25  
26  
27  
28  
29  
30  
31  
32  
33  
34  
35  
36  
37  
38  
39  
40  
41  
42  
43  
44  
45  
46  
47  
48  
49  
50  
51  
52  
53  
54  
55  
56  
57  
58  
59  
60

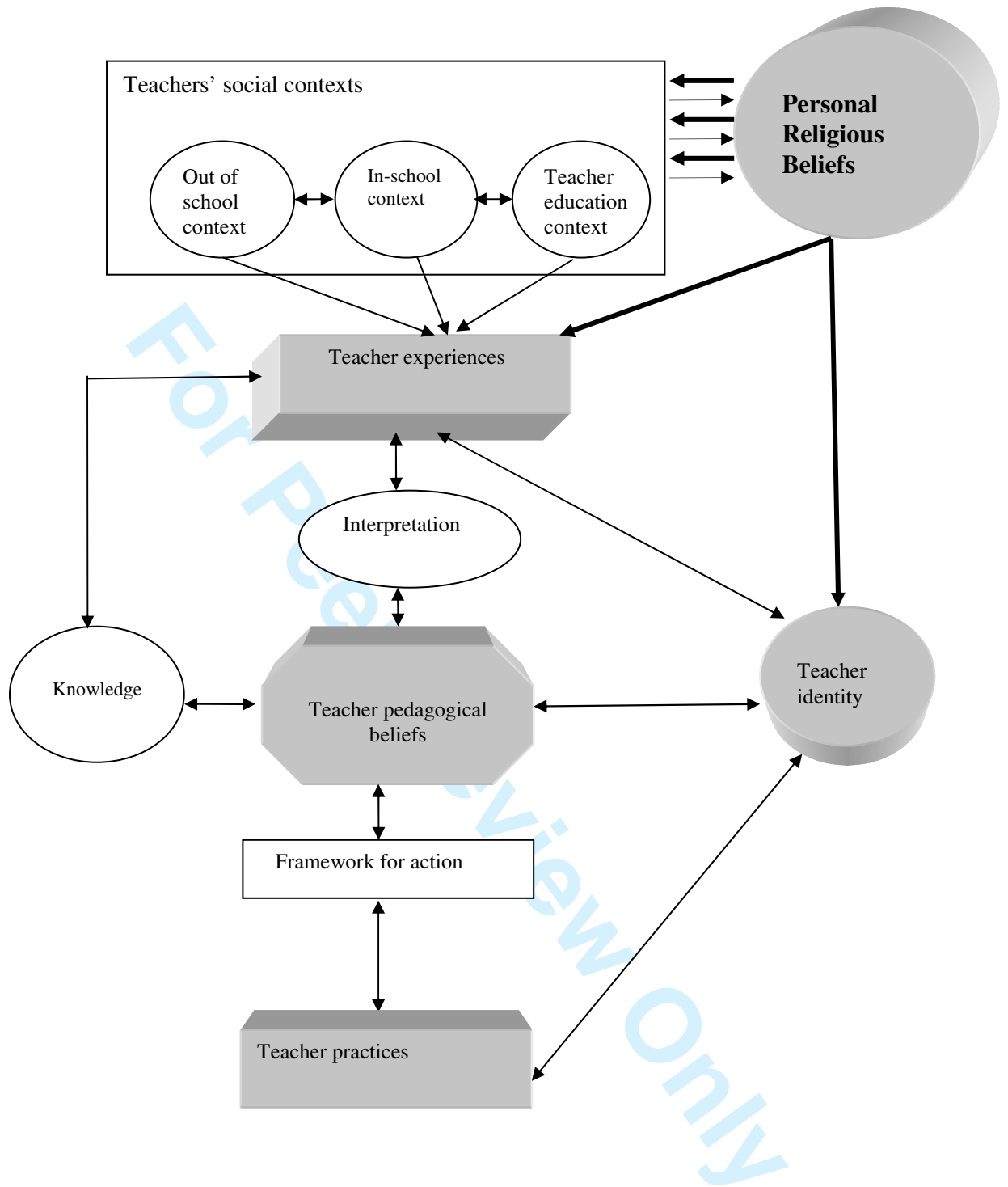


Figure 3. Personal Religious Beliefs (PRB) Model

**Table 1. The Secular Education System in Egypt**

<i>University, higher and intermediate institutes</i>			
Secondary stage	General secondary schools (age 15-18)	Technical secondary schools (age 15-18)	Grade 10-12
Basic education (Compulsory)	Preparatory stage (age 12-15)		Grade 7-9
	Primary stage (age 6-12)		Grade 1-6

**Table 2. Emergence of the theoretical coding 'Personal Religious Beliefs'**

Inductive coding 'Open coding'	Conceptual refinement	Building categorical structures 'Axial coding'
Science as a creation of God	Teacher religious understanding of the sources of science	Personal Religious epistemology
Islamic view of science	Teachers' religious beliefs are reflected in how they understand science	
Gaining knowledge as an approach to God	The aim of any studying is to approach God	
Stable religion	Teachers enact their Islamic belief	
Qur'an as starting point for scientific research	Understanding Qur'an precedes studying science	Personal Religious scientific-view of science
Discovering science by Qur'an	Starting searching science should start from study Qur'an	
Science as wandering around nature	Studying science can be anywhere	
Moral principle in searching science	Teachers reflect their religious principles	
Qur'anic guide to science	Teachers' religious condition for searching in science	
Moral principle in searching science	Teachers' religious moral as a framework of gaining science	
Muslim scientists	Teachers' emphasis on the characteristics of scientists	
Changeable science	Teachers' interpretation of the reality science	
Abusing the nature	Teachers' reflection of Islamic-scientific responsibility toward the nature	
Science content as effective spirituality	Science content as effective spirituality	Religious view of curriculum
Cloning is destructive for society	Teachers' religious understanding of cloning	
Islamic science curriculum	Teachers view of the development of he science curriculum	

1	Religious orientation of Science content	Teachers view of the integration between science and religion	
2	Explaining the supernatural of God by science	Spiritual aim if science	Religious view of the aim of science
3	Wondering about nature in Qur'an	Teachers' religious reflection of the physical laws of the nature	
4	Wondering about ourselves body in Qur'an	Teachers' religious understanding of the concept of creation	
5	Science guide to a good Muslim	Religious attitude toward the role of science	
6	Science-religion war	Teachers' interpretation of the relationship between science and religion	
7	Qur'anic motivation of science	Teachers' interests of science by influence of religion	
8	Islamic responsibility	Teachers' efforts to enact the religious principles.	
9	Contradictions in science not in Qur'an	Teachers' knowledge about science and about the scientific processes	
10	Simplifying controversial issues religiously	Teachers' efforts to present the religious view	Religious view of teaching/learning science
11	Religious orientation of Science content	Teachers' efforts to present the religious view	
12	Religion as a guide for teacher education	Teachers' saturation of the religious principles	
13	Biased-religious views	Teachers' efforts to present the religious view	
14	Presenting science in Qur'an	Teachers' effort to present the religious view	
15	Islamic view of co-operation	Teachers' intervention of the morals and values based on religion	
16	Qur'anic verses as a guide for controversial issues	Teachers' religious perspective of teaching controversial issues	
17	Islamic approach of teaching	Teachers' religious reflection of teacher science	
18	Qur'anic approach for teaching controversial issues	Teachers' religious reflection of teacher science	
19	Helping in Islam	Teachers' religious motivation	
20	Expressing the right view	Evaluative role of teacher	
21	Changing the students' attitudes	Evaluative role of teacher	
22	Facilitator	Teachers' action	