



**HAL**  
open science

## An Enhanced Grouping Genetic Algorithm for solving the cell formation problem

Teerawut Tunnukij, Christian Hicks

► **To cite this version:**

Teerawut Tunnukij, Christian Hicks. An Enhanced Grouping Genetic Algorithm for solving the cell formation problem. *International Journal of Production Research*, 2009, 47 (07), pp.1989-2007. 10.1080/00207540701673457 . hal-00513007

**HAL Id: hal-00513007**

**<https://hal.science/hal-00513007>**

Submitted on 1 Sep 2010

**HAL** is a multi-disciplinary open access archive for the deposit and dissemination of scientific research documents, whether they are published or not. The documents may come from teaching and research institutions in France or abroad, or from public or private research centers.

L'archive ouverte pluridisciplinaire **HAL**, est destinée au dépôt et à la diffusion de documents scientifiques de niveau recherche, publiés ou non, émanant des établissements d'enseignement et de recherche français ou étrangers, des laboratoires publics ou privés.



**An Enhanced Grouping Genetic Algorithm for solving the cell formation problem**

Journal:	<i>International Journal of Production Research</i>
Manuscript ID:	TPRS-2006-IJPR-0853.R2
Manuscript Type:	Original Manuscript
Date Submitted by the Author:	16-Aug-2007
Complete List of Authors:	Tunnukij, Teerawut; Newcastle University, Business School Hicks, Christian; Newcastle University, Business School
Keywords:	CELL FORMATION, CELLULAR MANUFACTURE, GENETIC ALGORITHMS
Keywords (user):	



# An Enhanced Grouping Genetic Algorithm for solving the cell formation problem

T. TUNNUKIJ and C. HICKS\*

Newcastle University Business School, Newcastle University,

Newcastle upon Tyne, NE1 7RU, UK

Cell formation is often the first step in solving facility layout design problems. The objective is to group part families and machines so that they can be assigned to manufacturing cells. The cell formation problem is a non-deterministic polynomial (NP) complete problem which means that the time taken to produce solutions increases exponentially with problem size.

This paper presents the Enhanced Grouping Genetic Algorithm (EnGGA) that has been developed for solving the cell formation problem. The EnGGA replaces the replacement heuristic in a standard Grouping Genetic Algorithm with a Greedy Heuristic and employs a rank-based roulette-elitist strategy, which is a new mechanism for creating successive generations.

The EnGGA was tested using well-known data sets from the literature. The quality of the solutions was compared with those produced by other methods using the grouping efficacy measure. The results show that the EnGGA is effective and outperforms or matches the other methods.

---

\*Corresponding author. Email: Chris.Hicks@ncl.ac.uk

1  
2  
3  
4  
5  
6  
7  
8  
9  
10  
11  
12  
13  
14  
15  
16  
17  
18  
19  
20  
21  
22  
23  
24  
25  
26  
27  
28  
29  
30  
31  
32  
33  
34  
35  
36  
37  
38  
39  
40  
41  
42  
43  
44  
45  
46  
47  
48  
49  
50  
51  
52  
53  
54  
55  
56  
57  
58  
59  
60

*Keywords:* Group Technology; Cellular manufacturing; Cell formation;  
Genetic Algorithms; Grouping Genetic Algorithms

## 1. Introduction

A well-designed manufacturing facility enhances manufacturing efficiency by reducing material flow, materials handling, work in progress and lead times. Scheduling and the control of operations may also be improved (Wemmerlov and Johnson 1997). Group Technology (GT) is a philosophy that aims to exploit similarities between parts, products and processes to achieve efficiencies (Hyer and Wemmerlov 1984). Cellular Manufacturing (CM) is the application of GT to manufacturing systems. It aims to substantially improve delivery performance and reduce work in progress, throughput time and manufacturing costs (Gallagher and Knight 1973, 1986). The implementation of CM requires parts with similar processing requirements to be grouped into part families. Manufacturing cells are clusters of dissimilar machines placed in close proximity that are dedicated to the manufacture of families of parts (Wemmerlov and Hyer 1989). Over the last three decades, a large number of clustering methods have been developed for identifying potential manufacturing cells. Many of these methods are based upon a machine-part incidence matrix (Askin and Standridge 1993). The objective is to rearrange the matrix to create a block diagonal structure from which families of parts and the machines required to produce them can be selected.

The optimisation of the cell formation problem (CFP) has been shown to be a non-deterministic polynomial (NP) complete problem (Dimopoulos and Zalzala 2000), which means that the amount of computation increases exponentially with problem size.

1  
2  
3 Even a powerful computer can take an unacceptably long time to solve a large problem  
4 due to combinatorial diffusion. Stochastic search methods are particularly suitable for  
5 solving complex combinatorial optimization problems. They are able to search large  
6 regions of the solution space without becoming trapped in local optima. Commonly used  
7 methods include Genetic Algorithms (Holland 1975), Tabu search (Glover 1989) and  
8 Simulated Annealing (Kirkpatrick, et al. 1983).  
9

10  
11 Genetic Algorithms (GAs) are derived from an analogy with biological evolution,  
12 in which the fitness of an individual determines its ability to survive and reproduce  
13 (Goldberg 1989). Falkenauer (1998) developed a Grouping Genetic Algorithm (GGA)  
14 that suited the structure of grouping problems. Brown and Sumichrast (2005) evaluated  
15 the performance of GGAs and suggested that GGAs are generally better than GAs for  
16 solving grouping optimisation problems because they are more computationally efficient.  
17

18  
19 The objectives of this paper are to:  
20

- 21 • review the methods that have been used for identifying potential manufacturing  
22 cells by solving the cell formation problem;
- 23 • describe the development of the Enhanced Grouping Genetic Algorithm (EnGGA)  
24 that substitutes the replacement heuristic in a standard Grouping Genetic  
25 Algorithm with a Greedy Heuristic. It also employs the rank-based roulette-elitist  
26 strategy, which is a new mechanism for creating successive generations;
- 27 • report the results of experiments that tested the EnGGA using data sets from the  
28 literature;
- 29 • compare the quality of the solutions produced by the EnGGA with those produced  
30 by other methods.  
31  
32  
33  
34  
35  
36  
37  
38  
39  
40  
41  
42  
43  
44  
45  
46  
47  
48  
49  
50  
51  
52  
53  
54  
55  
56  
57  
58  
59  
60

1  
2  
3 Section 2 reviews the literature relating to the CFP. Section 3 provides an overview  
4 of GAs and GGAs for solving the CFP. Section 4 describes the development of the  
5 EnGGA algorithm. Section 5 presents the computational results obtained with datasets  
6 from the literature and compares the performance of the EnGGA with other methods. The  
7 conclusions are presented in section 6.  
8  
9  
10  
11  
12

## 13 14 **2. The cell formation problem**

15  
16 The cell formation problem (CFP) groups machines into machine cells and parts into  
17 part families (Hu and Yasuda 2006). Well designed manufacturing cells should  
18 maximise the machine utilisation within each machine cell and minimise the inter-cell  
19 flow of parts. Ballakur and Steudel (1987) identified three approaches to grouping  
20 employed by cell formation methods:  
21  
22

- 23 1) *part family grouping*, which forms part families and then groups machines into cells;
- 24 2) *machine grouping*, which forms machine cells based upon similarities in part  
25 routings and then allocates parts to cells;
- 26 3) *machine-part grouping*, which forms part families and machine cells simultaneously.  
27  
28  
29  
30  
31  
32  
33  
34  
35  
36  
37  
38  
39  
40  
41  
42  
43  
44  
45  
46  
47  
48  
49  
50  
51  
52  
53  
54  
55  
56  
57  
58  
59  
60

[Insert figure 1 here]

The relationships between parts and machines may be represented as a machine-part incidence matrix (see Figure 1). For example, in Figure 1, part 1 is processed by machines 1, 2 and 4. Clustering methods based upon the machine-part incidence matrix aim to minimise the number of voids in the diagonal blocks and the number of exceptional elements (or 1s) outside the diagonal blocks, which create inter-cell flow. Kumar and Chandrasekharan (1990) proposed the grouping efficacy measure ( $\Gamma$ ) as a quantitative criterion for measuring the quality of block diagonal forms. This measure has been widely used in the literature.

$$\Gamma = 1 - \frac{e_o + e_v}{e + e_v} \quad (1)$$

where  $e$  the total number of operations (number of 1s in the matrix);

$e_o$  the number of 1s in the off-diagonal blocks;

$e_v$  the number of voids in the diagonal blocks.

Methods based upon the machine-part incidence matrix include the Bond Energy Algorithm (McCormick, et al. 1972), the Direct Clustering Algorithm (Chan and Milner 1982), Rank Order Clustering (King 1980), MODROC (Chandrasekharan and Rajagopalan 1986), ZODIAC (Chandrasekharan and Rajagopalan 1987), GRAFICS (Srinivasan and Narendran 1991) and the Close Neighbour Algorithm (Boe and Cheng 1991). Unfortunately, these methods do not always produce solutions with the desired diagonal structure (Hicks 2004).

1  
2  
3  
4  
5  
6  
7  
8  
9  
10  
11  
12  
13  
14  
15  
16  
17  
18  
19  
20  
21  
22  
23  
24  
25  
26  
27  
28  
29  
30  
31  
32  
33  
34  
35  
36  
37  
38  
39  
40  
41  
42  
43  
44  
45  
46  
47  
48  
49  
50  
51  
52  
53  
54  
55  
56  
57  
58  
59  
60

Methods based upon similarity coefficients have been used as an alternative approach for both part family grouping (Carrie 1973) and machine grouping (McAuley 1972, Gupta and Seifoddini 1990). A number of similarity and dissimilarity coefficients between parts and/or machines have been proposed for grouping part families and/or machine cells (Shafer and Rogers 1993a, 1993b, Islam and Sarker 2000). Though various similarity coefficients have been proposed, no particular similarity coefficient is effective in all situations (Sarker 1996). In practice, when some large complex manufacturing systems are considered, the results produced by similarity coefficients methods may be inconclusive (Hicks 2004).

Graph theoretical methods are an alternative hierarchical clustering approach based upon machine grouping (Rajagopalan and Batra 1975). A disadvantage of hierarchical methods is that they do not form part families and machine cells simultaneously; additional methods must be employed to complete the formation of cells, particularly when dealing with complex manufacturing systems (Goncalves and Resende 2004).

Mathematical programming-based methods have been used for part family grouping, machine grouping and machine-part grouping (Kusiak 1987, Won 2000). These mathematical programming-based methods allow designers to consider a variety of objectives, however, they can only be used for relatively small problems and they do not always produce desirable solutions (Joines, et al. 1996, Hicks 2004).

Various heuristic methods have been developed to solve the CFP. They have considered production variables, such as costs, processing times and capacity utilisation, as well as exception elements, operation sequences and intra- and inter-cell flow (Askin and Subramanian 1987, Kumar and Vannelli 1987, Heragu and Gupta 1994). However, in practice, some of the production variables may be difficult to evaluate and the



1  
2  
3 optimum solutions may not be robust in all situations (Singh 1993). Most of these  
4 algorithms are highly sensitive to the number of cells and the maximum number of  
5 machines or parts within each cell, which are usually predetermined in advance.  
6  
7 Therefore, if these parameters are selected improperly, the clustering methods may  
8  
9 produce unsatisfactory results (Tsai, et al. 1997).  
10  
11

12  
13 Since the CFP has been shown to be an NP-complete problem, traditional  
14 optimisation methods are incapable of finding optimal solutions to larger problems  
15 within a reasonable amount of time (Dimopoulos and Zalzal 2000, Goncalves and  
16 Resende 2004). Heuristic methods can be used for large problems, but they often  
17 become trapped in local optima (De Lit, et al. 2000). More recently, stochastic  
18 optimisation algorithms (meta-heuristic methods) have been used for solving the CFP.  
19 They can find global or near-global optimal solutions within a reasonable amount of  
20 computation time (Goncalves and Resende 2004). Commonly used stochastic  
21 optimisation algorithms include Simulated Annealing (Kirkpatrick, et al. 1983), Tabu  
22 search (Glover 1989) and Genetic Algorithms (Holland 1975). Simulated Annealing  
23 (SA) has been used for solving the CFP (Boctor 1991, Adil, et al. 1996, Boctor 1996,  
24 Sofianopoulou 1999). Tabu Search (TS) has been applied to the CFP by Logendran, et  
25 al. (1994), Aljaber, et al. (1997), and Adenso-Diaz, et al. (2001).  
26  
27  
28  
29  
30  
31  
32  
33  
34  
35  
36  
37  
38

39 Simulated Annealing (SA) and Tabu Search (TS) are both unidirectional search  
40 methods, where the search starts from a single initial state. Genetic Algorithms (GAs)  
41 operate on a set of solutions (chromosomes) simultaneously. They use information from  
42 all the current points to direct the search towards promising regions in the solution space  
43 (Venugopal and Narendran 1992, Uddin and Shanker 2002). They are less susceptible to  
44 becoming trapped in local optima (Yasuda, et al. 2005). GAs search in multiple  
45  
46  
47  
48  
49  
50  
51  
52  
53  
54  
55  
56  
57  
58  
59  
60

1  
2  
3 directions and are more likely to search throughout large search spaces. These two  
4  
5 features enable GAs to tackle NP-complete problems successfully (Venugopal and  
6  
7 Narendran 1992, Uddin and Shanker 2002). Aytug, et al. (2003) produced a  
8  
9 comprehensive review of the use of GAs for solving a wide range of production and  
10  
11 operations management problems including the CFP.  
12

### 13 14 **3. Genetic Algorithms and Grouping Genetic Algorithms**

15  
16  
17 A Genetic Algorithm is a competitive method that may be used to solve large,  
18  
19 unsmooth or noisy problems. GAs may find a 'good' solution rather than the global  
20  
21 optimum (Mitchell 1996). One of the main advantages of GAs is that they only require  
22  
23 an objective function (or 'fitness function') that can be evaluated numerically. They do  
24  
25 not require a mathematical representation of the problem. GAs can be used for non-  
26  
27 linear problems that are defined on discrete, continuous or mixed search spaces that may  
28  
29 be unconstrained or constrained. GAs are able to explore different regions of the  
30  
31 solution space in parallel and direct the search towards promising regions in the space  
32  
33 (Goldberg 1989).  
34

35 Aytug, et al. (2003) identified eight main components within GAs: i) genetic  
36  
37 representation; ii) method for generating the initial population; iii) evaluation function;  
38  
39 iv) reproduction selection scheme; v) genetic operators; vi) mechanism for creating  
40  
41 successive generations; vii) stopping criteria; and viii) parameter settings.  
42

43 Since the CFP is an NP-complete problem, GAs have been widely used to solve the  
44  
45 problem. Venugopal and Narendran (1992) were the first researchers to apply GAs to  
46  
47 the CFP. Their objective was to minimise the inter-cell flow and the total cell load  
48  
49 variation within a predetermined number of manufacturing cells. Each machine  
50  
51  
52  
53  
54  
55  
56  
57  
58  
59  
60

1  
2  
3 corresponded to a gene. An integer in a gene indicated the cell that contained a machine,  
4 and the position of the gene within the chromosome represented the machine number.  
5  
6  
7 This genetic representation has been commonly used for solving the CFP by many  
8  
9 researchers (see for example Gupta, et al. (1996), Moon and Gen (1999), Plaquin and  
10  
11 Pierreval (2000), Zolfaghari and Liang (2002)).  
12

13  
14 An example of a chromosome representation used for solving the CFP is shown in  
15  
16 Figure 2. In this example, a chromosome represents the solution of a part (or machine)  
17  
18 grouping problem that contains three cells. The first cell contains parts (or machines) 1,  
19  
20 2 and 6. The second cell contains parts (or machines) 3 and 5. The final cell contains  
21  
22 part (or machine) 4.  
23

24  
25 [Insert Figure 2 here]  
26  
27

28  
29 Alternative approaches include: i) the binary number representation where a gene is  
30  
31 represented by 1 if machine  $j$  is assigned to a cell  $i$ ; and 0 otherwise (Rao, et al. 1999,  
32  
33 Wicks and Reasor 1999); ii) the integer representation where the integer in a gene  
34  
35 corresponds to a machine number or a part number (Hwang and Sun 1996, Cheng, et al.  
36  
37 1998); and iii) the vector representation of real numbers (Goncalves and Resende 2004).  
38  
39 Comprehensive reviews of the use of GAs for solving the CFP can be found in  
40  
41 Dimopoulos and Zalzal (2000) and Pierreval et al. (2003).  
42

43  
44 The results provided in the literature show that GAs can outperform traditional  
45  
46 methods. Some heuristics have been combined with GAs in order to enhance their  
47  
48 performance. Hwang and Sun (1996) combined a GA with a Greedy Heuristic, which  
49  
50 always chooses the best choice available (Cormen, et al. 2001). Goncalves and Resende  
51  
52 (2004) combined a GA with a local search heuristic. The local search heuristic aimed to  
53  
54  
55  
56  
57  
58  
59  
60

1  
2  
3 improve the quality of the solutions by refining the chromosomes generated whenever  
4 possible. If the modified solution was better than the original solution, the original  
5 solution was replaced. The heuristic iterated until the quality of the new solution was no  
6 better than the quality of the previous solution. Most of these methods that have used  
7 GAs have assumed that the number of manufacturing cells is known in advance (Hu and  
8 Yasuda 2006).

9  
10  
11 Falkenauer (1998) developed a Grouping Genetic Algorithm (GGA) to optimise  
12 grouping problems efficiently. The GGA differs from classical GAs in two important  
13 aspects: i) a special gene encoding scheme was developed to represent grouping  
14 problems within chromosomes; and ii) special genetic operators were developed that  
15 suited the structure of these chromosomes.

16  
17  
18 In classical GAs, the standard gene encoding scheme includes significant  
19 redundancy when representing grouping problems (Falkenauer 1998). For example,  
20 chromosomes ABAC and CACB both represent a solution where the first and third  
21 items are in the same group and the second and the fourth items are in different groups.  
22 This repetition increases the size of the search space and potentially reduces the  
23 effectiveness of the GAs. The GGA gene encoding scheme focuses upon the contents of  
24 the groups, not their ordering. An additional group portion that contains a list of the  
25 groups is added to the main portion of each chromosome. This modification to the  
26 standard gene encoding scheme allows the modified crossover and mutation operators  
27 to manipulate the group portion of the chromosome. This allows groups to be modified  
28 as a whole, rather than modifying individual members (Brown and Sumichrast 2003).  
29  
30  
31  
32  
33  
34  
35  
36  
37  
38  
39  
40  
41  
42  
43  
44  
45  
46  
47  
48  
49  
50  
51  
52  
53  
54  
55  
56  
57  
58  
59  
60  
The gene encoding scheme and the modified genetic operators enable the GGA to

1  
2  
3 efficiently find high-quality solutions for a wide range of grouping problems (Brown  
4 and Sumichrast 2005).  
5  
6

7 De Lit et al. (2000) used the GGA to solve the CFP with a fixed maximum cell size.  
8  
9 Brown and Sumichrast (2001) tested the GGA using data sets from the literature. This  
10 work did not predetermine the number of manufacturing cells or the number of  
11 machines within the cell. It included a replacement heuristic that was used as part of the  
12 crossover operator, which enhanced the performance of the GGA (Brown and  
13 Sumichrast 2001, 2003). Although GGAs are generally better than GAs for solving the  
14 cell formation problem because they are more computationally efficient (Brown and  
15 Sumichrast 2005), a GA with a local search heuristic proposed by Goncalves and  
16 Resende (2004) produced better results than the standard GGA in most cases. James, et  
17 al. (2007) combined the standard GGA with the local search heuristic proposed by  
18 Goncalves and Resende (2004) to produce a hybrid GGA. It outperformed the standard  
19 GGA and produced better solutions in all cases. It also reduced the variability amongst  
20 the solutions found. It mostly outperformed other methods, including the GA with a  
21 local search heuristic. However, the hybrid GGA required more computation time than  
22 the standard GGA due to the local search heuristic that was used to generate each  
23 chromosome.  
24  
25  
26  
27  
28  
29  
30  
31  
32  
33  
34  
35  
36  
37  
38

39 Yasuda, et al. (2005) used the GGA to solve multi-objective cell formation  
40 problems. Their objectives were to minimise the cell load variation and the inter-cell  
41 flows whilst considering machine capacities, part volumes and part processing times on  
42 machines. Hu and Yasuda (2006) used the GGA to solve the cell formation problem  
43 with alternative processing routes. Their objective was to minimise the total cost of  
44 material flow between cells and within the cells. They assumed that the inter-cell  
45  
46  
47  
48  
49  
50  
51  
52  
53  
54  
55  
56  
57  
58  
59  
60

1  
2  
3 movement cost was directly proportional to the number of cells and that the intra-cell  
4 movement cost was inversely proportional to the number of cells. However, these  
5 assumptions may be invalid in reality because transportation costs usually depend upon  
6 how the layout and transportation system are designed, which are determined by further  
7 steps of the facilities layout problem. In addition, transportation costs are a function of  
8 the weight and size of parts.  
9

10  
11 Although the consideration of factors, such as machine capacities, part processing  
12 times and alternative processing routes can be taken into account, they may make the  
13 analysis very complicated, which can be a problem for practitioners. The 0-1 machine-  
14 part incidence matrix is easier for practitioners to comprehend. It provides a  
15 representation of the initial cell formation that can form the basis for further steps of the  
16 facility layout design process. The design produced can be subsequently modified to  
17 take other factors into consideration (Cheng, et al. 1998).  
18  
19  
20  
21  
22  
23  
24  
25  
26  
27  
28  
29

#### 30 **4. Enhanced Grouping Genetic Algorithm**

31  
32  
33 The Enhanced GGA (EnGGA) reported in this paper was developed by improving  
34 the configuration of the standard GGA proposed by Brown and Sumichrast (2001). The  
35 EnGGA replaces the replacement heuristic in the standard GGA with a Greedy  
36 Heuristic. It employs a rank-based roulette-elitist strategy that combines the elitist  
37 strategy (Goldberg 1989) with a rank-based roulette wheel (Reeves 1995). This is a new  
38 mechanism for creating successive generations. The EnGGA uses the GGA encoding  
39 strategy proposed by Falkenauer (1998). The GGA crossover operator, elimination mutation  
40 operator and division mutation operator were used with minor modifications. The EnGGA  
41  
42  
43  
44  
45  
46  
47  
48  
49  
50  
51  
52  
53  
54  
55  
56  
57  
58  
59  
60

1  
2  
3 includes a repair process that rectifies infeasible chromosomes that may be produced  
4 during the evolution process. The general structure of the EnGGA is shown in Figure 3.  
5  
6  
7  
8

9 [Insert figure 3 here]  
10  
11

12 The EnGGA uses the 0-1 machine-part incidence matrix to represent the initial  
13 configuration. The EnGGA can solve the CFP without predetermining the number of  
14 manufacturing cells or the number of machines and parts within each cell. However,  
15 there is no point in clustering all the machines ( $M$ ) and all the parts ( $P$ ) into only one  
16 cell or having only one machine in each cell. Therefore, the possible number of cells ( $C$ )  
17 is defined as  $2 \leq C \leq \min(M-1, P-1)$ .  
18  
19  
20  
21  
22  
23  
24

#### 25 **4.1 Genetic representation**

26  
27

28 The first stage of the EnGGA process encodes the machine-part grouping problem  
29 into genes. The GGA encoding scheme is used. The chromosome representation (shown  
30 in Figure 4) consists of three sections: i) the part section; ii) the machine section; and iii)  
31 the group section. Each gene in the part and machine sections contains an integer that  
32 represents the cell number. The part and machine numbers are represented by the  
33 position of the genes within the appropriate section. Note that the integers that represent  
34 cell numbers in the part and machine sections are for information only because the  
35 genetic operators only work on the group section. The length of individual  
36 chromosomes may differ because the number of cells in alternative solutions may vary.  
37 The chromosome length is therefore equal to the sum of the number of parts ( $P$ ),  
38 the number of machines ( $M$ ) and the number of cells ( $C$ ), where  $C$  varies from 2 to  
39  $\min(M-1, P-1)$ . The order in which the cells in the group section are listed does not  
40  
41  
42  
43  
44  
45  
46  
47  
48  
49  
50  
51  
52  
53  
54  
55  
56  
57  
58  
59  
60

1  
2  
3 matter. This representation allows the machine-part grouping approach to be used. It  
4 also allows the modified crossover and mutation operators to be performed on the group  
5 portion of the chromosome. As a result, the groups are modified as a whole, rather than  
6 by modifying individual members. This is a computationally efficient approach. Figure  
7 4 illustrates this representation with a chromosome that represents a possible solution to  
8 the machine-part grouping problem shown in Figure 1a. The group section shows that  
9 the machines and parts are allocated to three cells. The first cell contains parts 1, 2, 6  
10 and machine 3. The second cell contains parts 3 and 5 together with machines 2 and 4.  
11 The final cell contains part 4 and machine 1.  
12  
13  
14  
15  
16  
17  
18  
19  
20  
21  
22

23 [Insert figure 4 here]  
24  
25

#### 26 **4.2 Method for generating the initial population**

27  
28

29 The initial population of chromosomes is generated randomly. This process is as  
30 follows:  
31

- 32 1)  $C$  cells are randomly generated, where  $C$  is a random positive integer where  
33  $2 \leq C \leq M-1$  if  $M < P$ , otherwise  $2 \leq C \leq P-1$ ;  
34
- 35 2)  $C$  parts and  $C$  machines are randomly selected; the parts and machines are then  
36 assigned to cells so that each cell contains at least one part and one machine;  
37
- 38 3) the remaining parts and machines are randomly allocated into the cells;  
39
- 40 4) steps 1-3 above are repeated until a population of the required size ( $Pop$ ) is produced.  
41  
42  
43  
44  
45  
46  
47  
48  
49  
50  
51  
52  
53  
54  
55  
56  
57  
58  
59  
60



#### 4.3 *Reproduction selection scheme*

Chromosomes are randomly selected for the crossover and mutation operations; all chromosomes have an equal probability of selection. The probabilities of crossover ( $P_c$ ) and mutation ( $P_m$ ) are pre-specified experimental parameters.

#### 4.4 *Genetic operators*

There are two types of genetic operators: i) crossover, the 'focusing operator', which helps the GA move towards a local optimum by exploiting the current neighbourhood; and ii) mutation, the 'exploration operator', which tends to randomly move the search to a new neighbourhood in order to avoid becoming trapped in a local optimum (Aytug, et al. 2003). Crossover tends to make the chromosomes within the population more similar, whereas mutation tends to make them more diverse (Holland 1975, Goldberg 1989).

In this research, Falkenauer's (1998) crossover, elimination mutation and division mutation operators were adopted (with minor modifications). They were integrated with a new repair process that rectifies infeasible chromosomes produced by genetic operations. The crossover operator includes two steps, which are shown in Figure 5:

- a) two parents are randomly chosen from the population; two crossover points are then randomly selected from the group section of each parent. Figure 5a shows two parents (that both represent possible solutions to the machine-part grouping problem shown in Figure 1a) and their crossover points;
- b) all the genes from the first parent are initially copied to the first child. Likewise, all the genes from the second parent are initially copied to the second child. The section within the crossover points of the second parent is appended to the first child;

1  
2  
3 likewise, the section within the crossover points of the first parent is appended to the  
4 second child. When genetic information is copied from the second parent to the first  
5 child, or from the first parent to the second child, it is shown in underlined text. All  
6 the parts and machines that belong to the cells within the appended section are  
7 inherited by the child. For example in Figure 5b, the first child has inherited cell 1  
8 from the second parent. This cell contains parts 4, 5 and 6 together with machines 1,  
9 3 and 4; they are all inherited by the first child, which replace the genes initially  
10 inherited from the first parent.  
11  
12  
13  
14  
15  
16  
17  
18  
19  
20

21 [Insert figure 5 here]  
22  
23  
24  
25

26 If the cell formations represented by the two parents are the same, Falkenauer's  
27 crossover operator will produce children that are identical to the parents. This  
28 phenomenon will trap the search into a local optimum. Therefore, in the EnGGA the  
29 two selected parents are compared before they are processed by the crossover operator.  
30 If they are the same, a parent that has a different cell formation will be randomly chosen  
31 from the population to replace one of the parents. Unfortunately, there is a problem that  
32 may arise from this procedure. When the results produced by the algorithm are nearly  
33 convergent, the population will include a lot of duplicated chromosomes. As a result,  
34 the algorithm may not be able to find two parents that represent different solutions. An  
35 alternative approach, proposed by Yasuda, et al. (2005), is to clone one of the parents to  
36 produce one child and create another child randomly. However, this approach may  
37 prevent convergence. In this research, the algorithm attempts to randomly choose a  
38 parent that has a different cell formation. If the randomly chosen chromosomes are the  
39  
40  
41  
42  
43  
44  
45  
46  
47  
48  
49  
50  
51  
52  
53  
54  
55  
56  
57  
58  
59  
60

1  
2  
3 same, the process is repeated until either a different chromosome has been chosen, or  
4  
5 until 30% of the population has been sampled.  
6

7 The standard GGA elimination mutation operator and division mutation operator  
8 (Falkenauer 1998) were used with minor modifications. The mutation steps, which are  
9 shown in Figure 6, are as follows:  
10  
11

- 12 1) a parent is chosen from the population randomly;
- 13 2) the number of cells is checked:
  - 14 a) if the number of cells is more than two, the standard elimination mutation  
15 operator will be used. One of the cells in the group section is randomly selected  
16 and all of its elements are eliminated. The remaining elements are inherited by  
17 the child (see Figure 6a);
  - 18 b) if the number of cells is two or less, the modified division mutation operator will  
19 be used. With the modified division mutation operation, a cell that contains at  
20 least two parts and two machines is randomly selected and then divided into two  
21 new cells. Two parts and two machines within the selected cell are randomly  
22 selected and are split between the two new cells. This ensures that each new cell  
23 contains at least one part and one machine. Figure 6b illustrates this process. In  
24 this case cell 1 has been randomly selected as it contains at least two parts and  
25 two machines. Cell 1 is then divided into cell 1 and cell 3. The underlined cell  
26 numbers indicates that the cells have been created by the division mutation. The  
27 next step is to randomly select two parts and two machines from cell 1 to be  
28 assigned to cells 1 and 3. In this case, part 4 and machine 3 have been assigned  
29 to cell 1, whilst part 5 and machine 1 have been allocated to cell 3. The remaining  
30 unassigned elements (part 6 and machine 4) are allocated by the repair process.  
31  
32  
33  
34  
35  
36  
37  
38  
39  
40  
41  
42  
43  
44  
45  
46  
47  
48  
49  
50  
51  
52  
53  
54  
55  
56  
57  
58  
59  
60

1  
2  
3  
4  
5 [Insert Figure 6 here]  
6  
7  
8  
9

#### 10 **4.5 Repair process**

11  
12 The chromosomes produced by the genetic operations may represent infeasible  
13 solutions. A repair process was developed to rectify infeasible chromosomes. The repair  
14 process consists of four stages:  
15  
16  
17

- 18 1) *checking and removing empty cells* – each cell must contain at least one part and one  
19 machine. For example, in Figure 5b, children 1 and 2 contain empty cells. Cell 2 in  
20 child 1 has no machines or parts, whilst cell 1 has two parts, but no machines.  
21 Likewise, cell 2 in child 2 has parts 2 and 3, but no machines. The repair process  
22 identifies and then removes the empty cells (see  
23 Figure 7a);
- 24 2) *checking the number of cells* – the possible number of cells ( $C$ ) is defined as  
25  
26  $2 \leq C \leq \min(M-1, P-1)$ :  
27  
28
  - 29 • if the number of cells within the child produced after step 1 is one, a new cell  
30 number will be inserted and unassigned parts and machines will be relocated  
31 into the new cell;
  - 32 • if the number of cells is more than  $\min(M-1, P-1)$ , a cell will be randomly  
33 selected and eliminated until the number of cells is equal to  $\min(M-1, P-1)$ .  
34  
35 Unassigned parts and machines will then be relocated into the existing cells by  
36 the Greedy Heuristic;
- 37 3) *Greedy Heuristic* – unassigned parts and machines are assigned to the existing cells  
38 by a Greedy Heuristic, which is used as an alternative to the replacement heuristic in  
39 the standard GGA proposed by Brown and Sumichrast (2001). The Greedy Heuristic  
40 evaluates the fitness of all the possible chromosomes that could be produced by all  
41 the alternative allocations of unassigned parts and machines. Fitness is measured in  
42 terms of the grouping efficacy.  
43  
44  
45  
46  
47  
48  
49  
50  
51  
52  
53  
54  
55  
56  
57  
58  
59  
60

- 1  
2  
3  
4  
5  
6  
7  
8  
9  
10  
11  
12  
13  
14  
15  
16  
17  
18  
19  
20  
21  
22  
23  
24  
25  
26  
27  
28  
29
- 5) Figure 7a illustrates this procedure. Child 1 represents a cell formation where cell 1 contains parts 4, 5, 6 and machines 1, 3 and 4; cell 3 contains part 1 and machine 2. However, parts 2 and 3 are unassigned and need to be relocated into either cells 1 or 3. If the original machine-part incidence matrix shown in Figure 1a was rearranged to reflect this configuration and part 2 was relocated into cell 1, the grouping efficacy would be 42.10. If part 2 was relocated into cell 3, the grouping efficacy would be 31.58. Therefore, the Greedy Heuristic would place part 2 into cell 1 because that would generate the highest grouping efficacy. After relocating part 2 into cell 1, part 3 would then be relocated into cell 3 because that would generate the highest grouping efficacy of 50.00 rather than placing it into cell 1 which would generate a grouping efficacy of 42.86.
- 6) Figure 7b shows the solution after relocating unassigned parts and machines using the Greedy Heuristic. The replacement heuristic in the standard GGA would place an unassigned part into the cell that contains the most machines on its routing. In this example, the replacement heuristic would randomly allocate part 3 to cell 1 or cell 3 because part 3 requires one machine in each cell. Thus the replacement heuristic may not select the solution with the highest grouping efficacy. The standard GGA with the replacement heuristic may therefore produce inferior results to the EnGGA with the Greedy Heuristic.

30  
31  
32  
33

*Renumbering the groups* to simplify interpretation. This is  
illustrated by

- 34  
35  
36  
37  
38  
39  
40  
41
- 7) Figure 7c. In this example, cell 3 in the first child has been renumbered as cell 1, whilst cell 1 has been renumbered as cell 2. Likewise for the second child cell 3 has become cell 2 and cell 1 is unchanged.

42  
43  
44

[Insert figure 7 here]

#### 45 **4.6 Evaluation criteria**

46  
47  
48  
49  
50  
51  
52  
53  
54  
55  
56  
57  
58  
59  
60

The best solution produced by the machine-part incidence matrix-based methods minimises the number of voids (zeros) in the diagonal blocks and the number of

1  
2  
3 exceptions (1s outside the diagonal blocks) which represent inter-cell flows. This paper  
4 employed the grouping efficacy ( $r$ ) as the objective function for measuring the quality  
5 of block diagonal forms.  
6  
7  
8  
9


#### 10 **4.7 Mechanism for creating successive generations**

11  
12  
13 Three selection mechanisms have been widely used for creating successive  
14 generations: 1) the roulette wheel approach; 2) the tournament approach; and 3) the  
15 elitist strategy. With the roulette wheel approach (Goldberg 1989), also known as biased  
16 roulette wheel selection, the fitness of a particular chromosome determines the size of  
17 its segment on the roulette wheel. The roulette wheel is then 'spun' repeatedly to  
18 produce a new population, with the same number of chromosomes as the initial  
19 population. With this approach, the chromosomes with low fitness values still have a  
20 small probability of being selected for the next generation. However, if there is only a  
21 small difference between the highest fitness and the lowest fitness chromosomes, the  
22 roulette wheel selection may not always allow the fittest chromosomes to survive  
23 (Brown and Sumichrast 2001). Reeves (1995) proposed an algorithm to solve this  
24 problem by determining an alternative fitness score for each chromosome as follows.  
25 First, the chromosomes were ranked in order from the worst (rank of 1) to the best (rank  
26 of  $N$ ). Then, a chromosome of rank  $r$  was assigned a fitness score of  $2r/N(N + 1)$ , where  
27  $N$  was the number of chromosomes ranked. However, if a large number of  
28 chromosomes were ranked, the difference between the highest fitness chromosomes and  
29 the low fitness chromosomes may be small. For example, the best chromosome from 1000  
30 chromosomes is assigned 0.2% of the wheel whilst the 500<sup>th</sup> chromosome ranked is  
31 assigned 0.1% of the wheel; therefore, there is only a 0.1% difference. As a result, with  
32  
33  
34  
35  
36  
37  
38  
39  
40  
41  
42  
43  
44  
45  
46  
47  
48  
49  
50  
51  
52  
53  
54  
55  
56  
57  
58  
59  
60

1  
2  
3 a large population the rank-based roulette wheel selection may not always allow the  
4  
5 fittest chromosomes to survive.  
6

7 The tournament approach and the elitist strategy (Goldberg 1989) are more likely to  
8  
9 allow the fittest chromosomes to be replicated in the next generation. However, they  
10  
11 may be dominated by a small number of fit chromosomes which may reduce the amount  
12  
13 of search. Higher probabilities of mutation can be employed to prevent the solution  
14  
15 from becoming trapped in a local optimum, but this may also prevent convergence.  
16

17 The EnGGA was tested with seven alternative selection mechanisms: 1) the roulette  
18  
19 wheel approach (Goldberg 1989); 2) the rank-based roulette wheel approach (Reeves  
20  
21 1995); 3) the tournament approach (Goldberg 1989); 4) the stochastic remainder  
22  
23 sampling without replacement approach (Goldberg 1989); 5) the elitist strategy  
24  
25 (Goldberg 1989); 6) the roulette-elitist strategy; and 7) the rank-based roulette-elitist  
26  
27 strategy. The first five selection mechanisms are well established selection mechanisms.  
28

29 The last two are new selection mechanisms that were developed in this research. The  
30  
31 roulette-elitist strategy combines the elitist strategy with the roulette wheel approach.  
32  
33 The  elitist strategy is used to select successive chromosomes by copying the best  
34  
35 chromosomes from the previous generation to the next generation (the percentage  
36  
37 copied is an experimental parameter) and the roulette wheel approach (Goldberg 1989)  
38  
39 is then used to select other successive chromosomes. The rank-based roulette-elitist  
40  
41 strategy also employs the elitist strategy to select the fittest chromosomes, but it uses the  
42  
43 rank-based roulette wheel (Reeves 1995) to select other successive chromosomes. It was  
44  
45 found that the rank-based roulette-elitist strategy with 15% of the best chromosomes  
46  
47 surviving to the next generation produced the best results. It was therefore chosen for  
48  
49 the EnGGA.  
50  
51  
52  
53  
54  
55  
56  
57  
58  
59  
60

**Comment [A1]:** I very much doubt this: From the very first result in a simple web search: "There is a range of effective selection strategies available in the literature. For instance, a rank based elitist strategy, commonly known as biased Roulette Wheel selection, is among the more popular selection strategies .."

**Comment [TT2]:** Goldberg's roulette wheel approach is also called biased roulette wheel selection in the literature. It is the roulette-elitist strategy and the rank-based roulette-elitist strategy that were developed in our work.

#### 4.8 Stopping criteria

The EnGGA terminates when a fixed number of generations have been completed. The cell formation configuration associated with the highest fitness chromosome is then shown.

#### 5. Analysis of performance using data obtained from the literature

The EnGGA was tested using datasets from the literature. A full factorial experiment considered the parameter settings shown in Table 1. In this research, the sum of probabilities of crossover ( $P_c$ ) and mutation ( $P_m$ ) was defined as  $P_c + P_m \leq 1$ . Therefore, if  $P_c$  was fixed at 1.0, there was no mutation.

The EnGGA was tested with a set of 24 problems that have been published in the literature and have been widely used in many comparative studies. All the data sets were transcribed from the original articles. The sources of the problems are shown in Table 2. The EnGGA was written in C and was tested on a laptop with a 1.66GHz processor.

[Insert table 1 here]

[Insert table 2 here, or put it at the end before the references]

The EnGGA was compared with the other methods from the literature listed in Table 2. These methods included: i) ZODIAC (Chandrasekharan and Rajagopalan 1989); ii) GRAFICS (Srinivasan and Narendran 1991); iii) MST-Clustering Algorithm (Srinivasan 1994); iv) TSP-GA (Cheng, et al. 1998); v) GP-GA (Dimopoulos and Mort



1  
2  
3 2001); vi) Zolfaghari and Liang's Simulated Annealing (SA) (Zolfaghari and Liang  
4 2002); vii) Zolfaghari and Liang's GA (Zolfaghari and Liang 2002); viii) Zolfaghari and  
5 Liang's Tabu Search (TS) (Zolfaghari and Liang 2002); ix) EA-GA (Goncalves and  
6 Resende 2004); x) CF-GGA (Brown and Sumichrast 2001); xi) MOGGA (Yasuda, et al.  
7 2005); and xii) HGGA (James, et al. 2007). The results of ZODIAC and GRAFICS  
8 were obtained from Srinivasan and Narendran (1991); otherwise the results were  
9 obtained from the original articles.  
10  
11  
12  
13  
14  
15  
16

17 There were several issues that needed to be considered when interpreting results.  
18 Dimopoulos and Mort (2001) only reported their results to one decimal place. Some of  
19 the data sets reported in Goncalves and Resende (2004) were inconsistent with data in  
20 the original references. In problem 21, shown in Table 2, the grouping efficacy reported  
21 by James, et al. (2007) was inconsistent with the grouping efficacy calculated from the  
22 block diagonal solution matrix that they provided. These inconsistencies are marked in  
23 the table. Zolfaghari and Liang (2002) used a fixed computational time of 10 seconds to  
24 obtain the solutions; it is possible that better solutions could have been achieved with  
25 more computational time. ZODIAC, GRAFICS and EA-GA did not allow the presence  
26 of singletons (cells containing only one machine or one part) which may have reduced  
27 the quality of the solutions produced by these algorithms. TSP-GA, Zolfaghari and  
28 Liang's algorithms, GP-GA, CF-GGA, MOGGA, HGGA, and EnGGA all allowed  
29 singletons. In Table 2, the best solutions including singletons found by the EnGGA are  
30 shown. The computational time in seconds and the generation when the best solution  
31 was found are also reported.  
32  
33  
34  
35  
36  
37  
38  
39  
40  
41  
42  
43  
44  
45  
46

47 In terms of the grouping efficacy measure, the EnGGA produced results that were  
48 equal to, or better than, all the other methods. For problem 15, EA-GA apparently  
49  
50  
51  
52  
53  
54  
55  
56  
57  
58  
59  
60

1  
2  
3 produced a better solution than the EnGGA but this was due to an error within the data  
4 used by Goncalves and Resende (2004) (the data used was different from the original  
5 reference). With problem 21, the result of the HGGA apparently outperformed the  
6 EnGGA, but the grouping efficacy reported in James, et al. (2007) was inconsistent with  
7 that calculated from the block diagonal solution matrix provided, which was only 45.27  
8 (the EnGGA result was 46.58). For problems 10 and 22, the EnGGA found the best  
9 solutions. When the data and calculation errors in the literature are taken into account,  
10 the EnGGA produced the best solutions in all cases. The EnGGA also performed better  
11 than other GGAs including the standard GGA (Brown and Sumichrast 2001), the  
12 MOGGA (Yasuda, et al. 2005), and the HGGA (James, et al. 2007) that combined the  
13 standard GGA with a local search heuristic (Goncalves and Resende 2004).  
14  
15  
16  
17  
18  
19  
20  
21  
22  
23  
24

Comment [A3]: Rephrase

25 The computational time required to run the EnGGA with 50 generations was less  
26 than 40 seconds, even for the large population size. For problems 1-9, the small  
27 problems, the EnGGA took less than 1 second to run, even with the large population  
28 size of 100. The best solution for each problem was found within 20 generations. In  
29 terms of parameter settings, the results showed that the combination of a  $P_c$  of 0.6-0.7  
30 together with a  $P_m$  of 0.1-0.3 and the combination of a  $P_c$  of 0.9 together with a  $P_m$  of  
31 0.1 produced the highest quality solutions.  
32  
33  
34  
35  
36  
37  
38  
39

## 40 6. Conclusions

41  
42  
43 A large number of methods have been developed to solve the cell formation  
44 problem (CFP). Since the CFP has been shown to be an NP-complete problem, meta-  
45 heuristic methods or stochastic optimisation algorithms have been widely used because  
46  
47  
48  
49  
50  
51  
52  
53  
54  
55  
56  
57  
58  
59  
60

1  
2  
3 they can produce global or near-global optimal solutions within a reasonable amount of  
4  
5 computation time.  
6

7 This paper has presented the Enhanced Grouping Genetic Algorithm (EnGGA) that  
8  
9 can solve the CFP without predetermining the number of manufacturing cells or the  
10  
11 number of machines and parts within each cell. The EnGGA replaces the replacement  
12  
13 heuristic in a standard Grouping Genetic Algorithm with a Greedy Heuristic and  
14  
15 employs a rank-based roulette-elitist strategy, which is a new mechanism for creating  
16  
17 successive generations. The EnGGA was tested using well-known data sets from the  
18  
19 literature. The quality of the solutions was compared with other methods using the  
20  
21 grouping efficacy measure. The results show that the EnGGA is effective and  
22  
23 outperforms all the other methods considered. The program required less than one  
24  
25 minute computational time in all situations, even with the large population size.  
26  
27  
28  
29  
30  
31  
32  
33  
34  
35  
36  
37  
38  
39  
40  
41  
42  
43  
44  
45  
46  
47  
48  
49  
50  
51  
52  
53  
54  
55  
56  
57  
58  
59  
60

1  
2  
3  
4  
5 **7. References**  
6

- 7 Adenso-Diaz, B., Lozano, S., Racero, J. and Guerrero, F., Machine cell formation in  
8 generalized Group Technology. *Computers and Industrial Engineering*, 2001,  
9 41(2), 227-240.  
10  
11 Adil, G. K., Rajamani, D. and Strong, D., Cell formation considering alternate routings.  
12 *International Journal of Production Research*, 1996, 34(5), 1361-1380.  
13  
14 Aljaber, N., Baek, W. and Chen, C.-L., Tabu search approach to the cell formation  
15 problem. *Computers & Industrial Engineering*, 1997, 32(1), 169-185.  
16  
17 Askin, R. G. and Subramanian, S. P., Cost-based heuristic for Group Technology  
18 configuration. *International Journal of Production Research*, 1987, 25(1), 101-113.  
19  
20 Askin, R. G. and Standridge, C. R., *Modeling and Analysis of Manufacturing Systems*,  
21 1993 (Wiley: New York).  
22  
23 Aytug, H., Khouja, M. and Vergara, F. E., Use of Genetic Algorithms to solve  
24 production and operations management problems: a review. *International*  
25 *Journal of Production Research*, 2003, 41(17), 3955-4009.  
26  
27 Ballakur, A. and Steudel, H. J., A within-cell utilization based heuristic for designing  
28 cellular manufacturing systems. *International Journal of Production Research*,  
29 1987, 25(5), 639-665.  
30  
31 Boctor, F. F., Linear formulation of the machine-part cell formation problem.  
32 *International Journal of Production Research*, 1991, 29(2), 343-356.  
33  
34 Boctor, F. F., Minimum-cost, machine-part cell formation problem. *International*  
35 *Journal of Production Research*, 1996, 34(4), 1045-1063.  
36  
37  
38  
39  
40  
41  
42  
43  
44  
45  
46  
47  
48  
49  
50  
51  
52  
53  
54  
55  
56  
57  
58  
59  
60

- 1  
2  
3 Boe, W. J. and Cheng, C. H., Close neighbour algorithm for designing cellular  
4 manufacturing systems. *International Journal of Production Research*, 1991,  
5 29(10), 2097-2116.  
6  
7  
8  
9 Brown, E. C. and Sumichrast, R. T., CF-GGA: a Grouping Genetic Algorithm for the  
10 cell formation problem. *International Journal of Production Research*, 2001,  
11 39(16), 3651-3669.  
12  
13  
14 Brown, E. C. and Sumichrast, R. T., Impact of the replacement heuristic in a Grouping  
15 Genetic Algorithm. *Computers and Operations Research*, 2003, 30(11), 1575-1593.  
16  
17  
18 Brown, E. C. and Sumichrast, R. T., Evaluating performance advantages of Grouping  
19 Genetic Algorithms. *Engineering Applications of Artificial Intelligence*, 2005,  
20 18(1), 12.  
21  
22  
23  
24 Carrie, A. S., Numerical taxonomy applied to Group Technology and plant layout.  
25 1973, 11(4), 399-416.  
26  
27  
28  
29 Chan, H. M. and Milner, D. A., Direct clustering algorithm for group formation in  
30 cellular manufacture. 1982, 1(1), 65-74.  
31  
32  
33 Chandrasekharan, M. P. and Rajagopalan, R., MODROC: An extension of Rank Order  
34 Clustering for Group Technology. *International Journal of Production  
35 Research*, 1986, 24(5), 1221-1233.  
36  
37  
38  
39 Chandrasekharan, M. P. and Rajagopalan, R., ZODIAC - an algorithm for concurrent  
40 formation of part-families and machine-cells. *International Journal of  
41 Production Research*, 1987, 25(6), 850.  
42  
43  
44  
45 Chandrasekharan, M. P. and Rajagopalan, R., GROUPABILITY: An analysis of the  
46 properties of binary data matrices for Group Technology. *International Journal  
47 of Production Research*, 1989, 27(6), 1035-1052.  
48  
49  
50  
51  
52  
53  
54  
55  
56  
57  
58  
59  
60

- 1  
2  
3 Cheng, C. H., Gupta, Y. P., Lee, W. H. and Wong, K. F., TSP-based heuristic for  
4 forming machine groups and part families. *International Journal of Production*  
5 *Research*, 1998, 36(5), 1325-1337.  
6  
7  
8  
9  
10 Cormen, T. H., Leiserson, C. E., Rivest, R. L. and Stein, C., *Introduction to Algorithms*,  
11 2001 (MIT Press: Cambridge, MA).  
12  
13  
14 De Lit, P., Falkenauer, E. and Delchambre, A., Grouping Genetic Algorithms: an  
15 efficient method to solve the cell formation problem. *Mathematics and*  
16 *Computers in Simulation*, 2000, 51(3-4), 257-271.  
17  
18  
19  
20 Dimopoulos, C. and Zalzal, A. M. S., Recent developments in evolutionary  
21 computation for manufacturing optimization: problems, solutions, and comparisons.  
22 *IEEE Transactions on Evolutionary Computation*, 2000, 4(2), 93-113.  
23  
24  
25  
26 Dimopoulos, C. and Mort, N., A hierarchical clustering methodology based on genetic  
27 programming for the solution of simple cell-formation problems. *International*  
28 *Journal of Production Research*, 2001, 39(1), 1-19.  
29  
30  
31  
32 Falkenauer, E., *Genetic Algorithms and Grouping Problems*, 1998 (John Wiley & Sons:  
33 New York).  
34  
35  
36 Gallagher, C. C. and Knight, W. A., *Group Technology*, 1973 (Butterworth: London).  
37  
38 Gallagher, C. C. and Knight, W. A., *Group Technology Production Methods in*  
39 *Manufacture*, 1986 (Wiley: New York).  
40  
41  
42 Glover, F., Tabu search - Part I. *ORSA Journal on Computing*, 1989, 1(3), 190-206.  
43  
44  
45  
46 Goldberg, D. E., *Genetic Algorithms in Search, Optimisation and Machine Learning*,  
47 1989 (Addison-Wesley: Reading, MA).  
48  
49  
50  
51  
52  
53  
54  
55  
56  
57  
58  
59  
60  
61  
62  
63  
64  
65  
66  
67  
68  
69  
70  
71  
72  
73  
74  
75  
76  
77  
78  
79  
80  
81  
82  
83  
84  
85  
86  
87  
88  
89  
90  
91  
92  
93  
94  
95  
96  
97  
98  
99  
100  
101  
102  
103  
104  
105  
106  
107  
108  
109  
110  
111  
112  
113  
114  
115  
116  
117  
118  
119  
120  
121  
122  
123  
124  
125  
126  
127  
128  
129  
130  
131  
132  
133  
134  
135  
136  
137  
138  
139  
140  
141  
142  
143  
144  
145  
146  
147  
148  
149  
150  
151  
152  
153  
154  
155  
156  
157  
158  
159  
160  
161  
162  
163  
164  
165  
166  
167  
168  
169  
170  
171  
172  
173  
174  
175  
176  
177  
178  
179  
180  
181  
182  
183  
184  
185  
186  
187  
188  
189  
190  
191  
192  
193  
194  
195  
196  
197  
198  
199  
200  
201  
202  
203  
204  
205  
206  
207  
208  
209  
210  
211  
212  
213  
214  
215  
216  
217  
218  
219  
220  
221  
222  
223  
224  
225  
226  
227  
228  
229  
230  
231  
232  
233  
234  
235  
236  
237  
238  
239  
240  
241  
242  
243  
244  
245  
246  
247  
248  
249  
250  
251  
252  
253  
254  
255  
256  
257  
258  
259  
260  
261  
262  
263  
264  
265  
266  
267  
268  
269  
270  
271  
272  
273  
274  
275  
276  
277  
278  
279  
280  
281  
282  
283  
284  
285  
286  
287  
288  
289  
290  
291  
292  
293  
294  
295  
296  
297  
298  
299  
300  
301  
302  
303  
304  
305  
306  
307  
308  
309  
310  
311  
312  
313  
314  
315  
316  
317  
318  
319  
320  
321  
322  
323  
324  
325  
326  
327  
328  
329  
330  
331  
332  
333  
334  
335  
336  
337  
338  
339  
340  
341  
342  
343  
344  
345  
346  
347  
348  
349  
350  
351  
352  
353  
354  
355  
356  
357  
358  
359  
360  
361  
362  
363  
364  
365  
366  
367  
368  
369  
370  
371  
372  
373  
374  
375  
376  
377  
378  
379  
380  
381  
382  
383  
384  
385  
386  
387  
388  
389  
390  
391  
392  
393  
394  
395  
396  
397  
398  
399  
400  
401  
402  
403  
404  
405  
406  
407  
408  
409  
410  
411  
412  
413  
414  
415  
416  
417  
418  
419  
420  
421  
422  
423  
424  
425  
426  
427  
428  
429  
430  
431  
432  
433  
434  
435  
436  
437  
438  
439  
440  
441  
442  
443  
444  
445  
446  
447  
448  
449  
450  
451  
452  
453  
454  
455  
456  
457  
458  
459  
460  
461  
462  
463  
464  
465  
466  
467  
468  
469  
470  
471  
472  
473  
474  
475  
476  
477  
478  
479  
480  
481  
482  
483  
484  
485  
486  
487  
488  
489  
490  
491  
492  
493  
494  
495  
496  
497  
498  
499  
500  
501  
502  
503  
504  
505  
506  
507  
508  
509  
510  
511  
512  
513  
514  
515  
516  
517  
518  
519  
520  
521  
522  
523  
524  
525  
526  
527  
528  
529  
530  
531  
532  
533  
534  
535  
536  
537  
538  
539  
540  
541  
542  
543  
544  
545  
546  
547  
548  
549  
550  
551  
552  
553  
554  
555  
556  
557  
558  
559  
560  
561  
562  
563  
564  
565  
566  
567  
568  
569  
570  
571  
572  
573  
574  
575  
576  
577  
578  
579  
580  
581  
582  
583  
584  
585  
586  
587  
588  
589  
590  
591  
592  
593  
594  
595  
596  
597  
598  
599  
600  
601  
602  
603  
604  
605  
606  
607  
608  
609  
610  
611  
612  
613  
614  
615  
616  
617  
618  
619  
620  
621  
622  
623  
624  
625  
626  
627  
628  
629  
630  
631  
632  
633  
634  
635  
636  
637  
638  
639  
640  
641  
642  
643  
644  
645  
646  
647  
648  
649  
650  
651  
652  
653  
654  
655  
656  
657  
658  
659  
660  
661  
662  
663  
664  
665  
666  
667  
668  
669  
670  
671  
672  
673  
674  
675  
676  
677  
678  
679  
680  
681  
682  
683  
684  
685  
686  
687  
688  
689  
690  
691  
692  
693  
694  
695  
696  
697  
698  
699  
700  
701  
702  
703  
704  
705  
706  
707  
708  
709  
710  
711  
712  
713  
714  
715  
716  
717  
718  
719  
720  
721  
722  
723  
724  
725  
726  
727  
728  
729  
730  
731  
732  
733  
734  
735  
736  
737  
738  
739  
740  
741  
742  
743  
744  
745  
746  
747  
748  
749  
750  
751  
752  
753  
754  
755  
756  
757  
758  
759  
760  
761  
762  
763  
764  
765  
766  
767  
768  
769  
770  
771  
772  
773  
774  
775  
776  
777  
778  
779  
780  
781  
782  
783  
784  
785  
786  
787  
788  
789  
790  
791  
792  
793  
794  
795  
796  
797  
798  
799  
800  
801  
802  
803  
804  
805  
806  
807  
808  
809  
810  
811  
812  
813  
814  
815  
816  
817  
818  
819  
820  
821  
822  
823  
824  
825  
826  
827  
828  
829  
830  
831  
832  
833  
834  
835  
836  
837  
838  
839  
840  
841  
842  
843  
844  
845  
846  
847  
848  
849  
850  
851  
852  
853  
854  
855  
856  
857  
858  
859  
860  
861  
862  
863  
864  
865  
866  
867  
868  
869  
870  
871  
872  
873  
874  
875  
876  
877  
878  
879  
880  
881  
882  
883  
884  
885  
886  
887  
888  
889  
890  
891  
892  
893  
894  
895  
896  
897  
898  
899  
900  
901  
902  
903  
904  
905  
906  
907  
908  
909  
910  
911  
912  
913  
914  
915  
916  
917  
918  
919  
920  
921  
922  
923  
924  
925  
926  
927  
928  
929  
930  
931  
932  
933  
934  
935  
936  
937  
938  
939  
940  
941  
942  
943  
944  
945  
946  
947  
948  
949  
950  
951  
952  
953  
954  
955  
956  
957  
958  
959  
960  
961  
962  
963  
964  
965  
966  
967  
968  
969  
970  
971  
972  
973  
974  
975  
976  
977  
978  
979  
980  
981  
982  
983  
984  
985  
986  
987  
988  
989  
990  
991  
992  
993  
994  
995  
996  
997  
998  
999  
1000

- 1  
2  
3 Gupta, T. and Seifoddini, H., Production data based similarity coefficient for machine-  
4 component grouping decisions in the design of a cellular manufacturing system.  
5  
6  
7 *International Journal of Production Research*, 1990, 28(7), 1247-1269.  
8
- 9 Gupta, Y., Gupta, M., Kumar, A. and Sundaram, C., A Genetic Algorithm-based  
10 approach to cell composition and layout design problems. *International journal*  
11 *of production research*, 1996, 34(2), 447-482.  
12  
13
- 14 Heragu, S. S. and Gupta, Y. P., Heuristic for designing cellular manufacturing facilities.  
15  
16 *International Journal of Production Research*, 1994, 32(1), 125-140.  
17
- 18 Hicks, C., A Genetic Algorithm tool for designing manufacturing facilities in the capital  
19 goods industry. *International Journal of Production Economics*, 2004, 90(2), 211.  
20  
21
- 22 Holland, J. H., *Adaptation in Natural and Artificial Systems*, 1975 (University of  
23 Michigan Press: Ann Arbor, Michigan).  
24  
25
- 26 Hu, L. and Yasuda, K., Minimising material handing cost in cell formation with  
27 alternative processing routes by Grouping Genetic Algorithm. *International*  
28 *Journal of Production Research*, 2006, 44(11), 2133-2167.  
29  
30  
31
- 32 Hwang, H. and Sun, J.-U., Genetic-algorithm-based heuristic for the GT cell formation  
33 problem. *Computers & Industrial Engineering*, 1996, 30(4), 941-955.  
34  
35
- 36 Hyer, N. L. and Wemmerlov, U., Group Technology and productivity. *Harvard*  
37 *Business Review*, 1984, 62(4), 140-149.  
38  
39
- 40 Islam, K. M. S. and Sarker, B. R., A similarity coefficient measure and machine-parts  
41 grouping in cellular manufacturing systems. *International Journal of Production*  
42 *Research*, 2000, 38(3), 699-720.  
43  
44  
45  
46  
47  
48  
49  
50  
51  
52  
53  
54  
55  
56  
57  
58  
59  
60

- 1  
2  
3 James, T. L., Brown, E. C. and Keeling, K. B., A hybrid Grouping Genetic Algorithm  
4 for the cell formation problem. *Computers and Operations Research*, 2007,  
5 34(7), 2059-2079.  
6  
7  
8  
9  
10 Joines, J. A., Culbreth, C. T. and King, R. E., Manufacturing cell design: an integer  
11 programming model employing Genetic Algorithms. *IIE Transactions (Institute*  
12 *of Industrial Engineers)*, 1996, 28(1), 69-85.  
13  
14  
15 King, J. R., Machine-component grouping in production flow-analysis - an approach  
16 using a Rank Order Clustering-Algorithm. *International Journal of Production*  
17 *Research*, 1980, 18(2), 213-232.  
18  
19  
20  
21 Kirkpatrick, S., Gelatt, C. D. and Vecchi, M. P., Optimization by Simulated Annealing.  
22 *Science*, 1983, 220(4598), 671-680.  
23  
24  
25  
26 Kumar, C. S. and Chandrasekharan, M. P., Grouping efficacy - a quantitative criterion  
27 for goodness of block diagonal forms of binary matrices in Group Technology.  
28 *International Journal of Production Research*, 1990, 28(2), 233-243.  
29  
30  
31  
32 Kumar, K. R. and Vannelli, A., Strategic subcontracting for efficient disaggregate  
33 manufacturing. *International Journal of Production Research*, 1987, 25(12),  
34 1715-1728.  
35  
36  
37  
38 Kusiak, A., Generalized Group Technology concept. *International Journal of*  
39 *Production Research*, 1987, 25(4), 561-569.  
40  
41  
42  
43 Logendran, R., Ramakrishna, P. and Sriskandarajah, C., Tabu search-based heuristics  
44 for cellular manufacturing systems in the presence of alternative process plans.  
45 *International Journal of Production Research*, 1994, 32(2), 273-297.  
46  
47  
48  
49  
50  
51  
52  
53  
54  
55  
56  
57  
58  
59  
60  
61  
62  
63  
64  
65  
66  
67  
68  
69  
70  
71  
72  
73  
74  
75  
76  
77  
78  
79  
80  
81  
82  
83  
84  
85  
86  
87  
88  
89  
90  
91  
92  
93  
94  
95  
96  
97  
98  
99  
100  
101  
102  
103  
104  
105  
106  
107  
108  
109  
110  
111  
112  
113  
114  
115  
116  
117  
118  
119  
120  
121  
122  
123  
124  
125  
126  
127  
128  
129  
130  
131  
132  
133  
134  
135  
136  
137  
138  
139  
140  
141  
142  
143  
144  
145  
146  
147  
148  
149  
150  
151  
152  
153  
154  
155  
156  
157  
158  
159  
160  
161  
162  
163  
164  
165  
166  
167  
168  
169  
170  
171  
172  
173  
174  
175  
176  
177  
178  
179  
180  
181  
182  
183  
184  
185  
186  
187  
188  
189  
190  
191  
192  
193  
194  
195  
196  
197  
198  
199  
200  
201  
202  
203  
204  
205  
206  
207  
208  
209  
210  
211  
212  
213  
214  
215  
216  
217  
218  
219  
220  
221  
222  
223  
224  
225  
226  
227  
228  
229  
230  
231  
232  
233  
234  
235  
236  
237  
238  
239  
240  
241  
242  
243  
244  
245  
246  
247  
248  
249  
250  
251  
252  
253  
254  
255  
256  
257  
258  
259  
260  
261  
262  
263  
264  
265  
266  
267  
268  
269  
270  
271  
272  
273  
274  
275  
276  
277  
278  
279  
280  
281  
282  
283  
284  
285  
286  
287  
288  
289  
290  
291  
292  
293  
294  
295  
296  
297  
298  
299  
300  
301  
302  
303  
304  
305  
306  
307  
308  
309  
310  
311  
312  
313  
314  
315  
316  
317  
318  
319  
320  
321  
322  
323  
324  
325  
326  
327  
328  
329  
330  
331  
332  
333  
334  
335  
336  
337  
338  
339  
340  
341  
342  
343  
344  
345  
346  
347  
348  
349  
350  
351  
352  
353  
354  
355  
356  
357  
358  
359  
360  
361  
362  
363  
364  
365  
366  
367  
368  
369  
370  
371  
372  
373  
374  
375  
376  
377  
378  
379  
380  
381  
382  
383  
384  
385  
386  
387  
388  
389  
390  
391  
392  
393  
394  
395  
396  
397  
398  
399  
400  
401  
402  
403  
404  
405  
406  
407  
408  
409  
410  
411  
412  
413  
414  
415  
416  
417  
418  
419  
420  
421  
422  
423  
424  
425  
426  
427  
428  
429  
430  
431  
432  
433  
434  
435  
436  
437  
438  
439  
440  
441  
442  
443  
444  
445  
446  
447  
448  
449  
450  
451  
452  
453  
454  
455  
456  
457  
458  
459  
460  
461  
462  
463  
464  
465  
466  
467  
468  
469  
470  
471  
472  
473  
474  
475  
476  
477  
478  
479  
480  
481  
482  
483  
484  
485  
486  
487  
488  
489  
490  
491  
492  
493  
494  
495  
496  
497  
498  
499  
500  
501  
502  
503  
504  
505  
506  
507  
508  
509  
510  
511  
512  
513  
514  
515  
516  
517  
518  
519  
520  
521  
522  
523  
524  
525  
526  
527  
528  
529  
530  
531  
532  
533  
534  
535  
536  
537  
538  
539  
540  
541  
542  
543  
544  
545  
546  
547  
548  
549  
550  
551  
552  
553  
554  
555  
556  
557  
558  
559  
560  
561  
562  
563  
564  
565  
566  
567  
568  
569  
570  
571  
572  
573  
574  
575  
576  
577  
578  
579  
580  
581  
582  
583  
584  
585  
586  
587  
588  
589  
590  
591  
592  
593  
594  
595  
596  
597  
598  
599  
600  
601  
602  
603  
604  
605  
606  
607  
608  
609  
610  
611  
612  
613  
614  
615  
616  
617  
618  
619  
620  
621  
622  
623  
624  
625  
626  
627  
628  
629  
630  
631  
632  
633  
634  
635  
636  
637  
638  
639  
640  
641  
642  
643  
644  
645  
646  
647  
648  
649  
650  
651  
652  
653  
654  
655  
656  
657  
658  
659  
660  
661  
662  
663  
664  
665  
666  
667  
668  
669  
670  
671  
672  
673  
674  
675  
676  
677  
678  
679  
680  
681  
682  
683  
684  
685  
686  
687  
688  
689  
690  
691  
692  
693  
694  
695  
696  
697  
698  
699  
700  
701  
702  
703  
704  
705  
706  
707  
708  
709  
710  
711  
712  
713  
714  
715  
716  
717  
718  
719  
720  
721  
722  
723  
724  
725  
726  
727  
728  
729  
730  
731  
732  
733  
734  
735  
736  
737  
738  
739  
740  
741  
742  
743  
744  
745  
746  
747  
748  
749  
750  
751  
752  
753  
754  
755  
756  
757  
758  
759  
760  
761  
762  
763  
764  
765  
766  
767  
768  
769  
770  
771  
772  
773  
774  
775  
776  
777  
778  
779  
780  
781  
782  
783  
784  
785  
786  
787  
788  
789  
790  
791  
792  
793  
794  
795  
796  
797  
798  
799  
800  
801  
802  
803  
804  
805  
806  
807  
808  
809  
810  
811  
812  
813  
814  
815  
816  
817  
818  
819  
820  
821  
822  
823  
824  
825  
826  
827  
828  
829  
830  
831  
832  
833  
834  
835  
836  
837  
838  
839  
840  
841  
842  
843  
844  
845  
846  
847  
848  
849  
850  
851  
852  
853  
854  
855  
856  
857  
858  
859  
860  
861  
862  
863  
864  
865  
866  
867  
868  
869  
870  
871  
872  
873  
874  
875  
876  
877  
878  
879  
880  
881  
882  
883  
884  
885  
886  
887  
888  
889  
890  
891  
892  
893  
894  
895  
896  
897  
898  
899  
900  
901  
902  
903  
904  
905  
906  
907  
908  
909  
910  
911  
912  
913  
914  
915  
916  
917  
918  
919  
920  
921  
922  
923  
924  
925  
926  
927  
928  
929  
930  
931  
932  
933  
934  
935  
936  
937  
938  
939  
940  
941  
942  
943  
944  
945  
946  
947  
948  
949  
950  
951  
952  
953  
954  
955  
956  
957  
958  
959  
960  
961  
962  
963  
964  
965  
966  
967  
968  
969  
970  
971  
972  
973  
974  
975  
976  
977  
978  
979  
980  
981  
982  
983  
984  
985  
986  
987  
988  
989  
990  
991  
992  
993  
994  
995  
996  
997  
998  
999  
1000



- 1  
2  
3 McCormick, W. T., Schweitzer, P. J. and White, T. W., Problem decomposition and  
4 data reorganization by a clustering technique. *Operations Research*, 1972, 20(5),  
5 993-1009.  
6  
7  
8  
9 Mitchell, M., *An Introduction to Genetic Algorithms*, 1996 (The MIT Press: Cambridge,  
10 MA).  
11  
12  
13 Moon, C. and Gen, M., A Genetic Algorithm-based approach for design of independent  
14 manufacturing cells. *International Journal of Production Economics*, 1999,  
15 60(1), 421-426.  
16  
17  
18  
19 Pierreval, H., Caux, C., Paris, J. L. and Viguier, F., Evolutionary approaches to the  
20 design and organization of manufacturing systems. *Computers and Industrial*  
21 *Engineering*, 2003, 44(3), 339-364.  
22  
23  
24  
25 Plaquin, M.-F. and Pierreval, H., Cell formation using evolutionary algorithms with  
26 certain constraints. *International Journal of Production Economics*, 2000, 64(1-  
27 3), 267-278.  
28  
29  
30  
31 Rajagopalan, R. and Batra, J. L., Design of cellular production systems: a graph-  
32 theoretic approach. *International Journal of Production Research*, 1975, 13(6),  
33 567-579.  
34  
35  
36  
37 Rao, H. A., Pham, S. N. and Gu, P., Genetic Algorithms-based approach for design of  
38 manufacturing systems: an industrial application. *International Journal of*  
39 *Production Research*, 1999, 37(3), 557-580.  
40  
41  
42  
43 Reeves, C. R., Genetic Algorithm for flowshop sequencing. *Computers & Operations*  
44 *Research*, 1995, 22(1), 5-13.  
45  
46  
47  
48  
49  
50  
51  
52  
53  
54  
55  
56  
57  
58  
59  
60

- 1  
2  
3 Sarker, B. R., Resemblance coefficients in Group Technology: a survey and  
4 comparative study of relational metrics. *Computers & Industrial Engineering*,  
5 1996, 30(1), 103-116.  
6  
7  
8  
9 Shafer, S. M. and Rogers, D. F., Similarity and distance measures for cellular  
10 manufacturing. Part I. A survey. *International Journal of Production Research*,  
11 1993a, 31(5), 1133-1142.  
12  
13  
14 Shafer, S. M. and Rogers, D. F., Similarity and distance measures for cellular  
15 manufacturing. Part II. An extension and comparison. *International Journal of*  
16 *Production Research*, 1993b, 31(6), 1315-1326.  
17  
18  
19  
20 Singh, N., Design of cellular manufacturing systems: an invited review. *European*  
21 *Journal of Operational Research*, 1993, 69(3), 284-291.  
22  
23  
24 Sofianopoulou, S., Manufacturing cells design with alternative process plans and/or  
25 replicate machines. *International Journal of Production Research*, 1999, 37(3),  
26 707-720.  
27  
28  
29  
30 Srinivasan, G., A clustering-algorithm for machine cell-formation in Group Technology  
31 using minimum spanning-trees. *International Journal of Production Research*,  
32 1994, 32(9), 2149-2158.  
33  
34  
35  
36 Srinivasan, G. and Narendran, T. T., GRAFICS. a nonhierarchical clustering algorithm  
37 for Group Technology. *International Journal of Production Research*, 1991,  
38 29(3), 463-478.  
39  
40  
41  
42 Tsai, C.-C., Chu, C.-H. and Barta, T. A., Modeling and analysis of a manufacturing cell  
43 formation problem with fuzzy mixed-integer programming. *IIE Transactions*  
44 *(Institute of Industrial Engineers)*, 1997, 29(7), 547.  
45  
46  
47  
48  
49  
50  
51  
52  
53  
54  
55  
56  
57  
58  
59  
60

- 1  
2  
3 Uddin, M. K. and Shanker, K., Grouping of parts and machines in presence of  
4  
5 alternative process routes by Genetic Algorithm. *International Journal of*  
6  
7 *Production Economics*, 2002, 76(3), 219-228.  
8
- 9 Venugopal, V. and Narendran, T. T., Genetic Algorithm approach to the machine-  
10  
11 component grouping problem with multiple objectives. *Computers & Industrial*  
12  
13 *Engineering*, 1992, 22(4), 469-480.  
14
- 15 Wemmerlov, U. and Hyer, N. L., Cellular manufacturing in the US industry: a survey of  
16  
17 users. *International Journal of Production Research*, 1989, 27(9), 1511-1530.  
18
- 19 Wemmerlov, U. and Johnson, D. J., Cellular manufacturing at 46 user plants:  
20  
21 implementation experiences and performance improvements. *International*  
22  
23 *Journal of Production Research*, 1997, 35(1), 49.  
24
- 25 Wicks, E. M. and Reasor, R. J., Designing cellular manufacturing systems with dynamic  
26  
27 part populations. *IIE Transactions (Institute of Industrial Engineers)*, 1999,  
28  
29 31(1), 11-20.  
30
- 31 Won, Y., Two-phase approach to GT cell formation using efficient p-median  
32  
33 formulations. *International Journal of Production Research*, 2000, 38(7), 1601-  
34  
35 1613.  
36
- 37 Yasuda, K., Hu, L. and Yin, Y., A Grouping Genetic Algorithm for the multi-objective  
38  
39 cell formation problem. *International Journal of Production Research*, 2005,  
40  
41 43(4), 829-853.  
42
- 43 Zolfaghari, S. and Liang, M., Comparative study of Simulated Annealing, Genetic  
44  
45 Algorithms and Tabu search for solving binary and comprehensive machine-  
46  
47 grouping problems. *International Journal of Production Research*, 2002, 40(9),  
48  
49 2141-2158.  
50  
51  
52  
53  
54  
55  
56  
57  
58  
59  
60

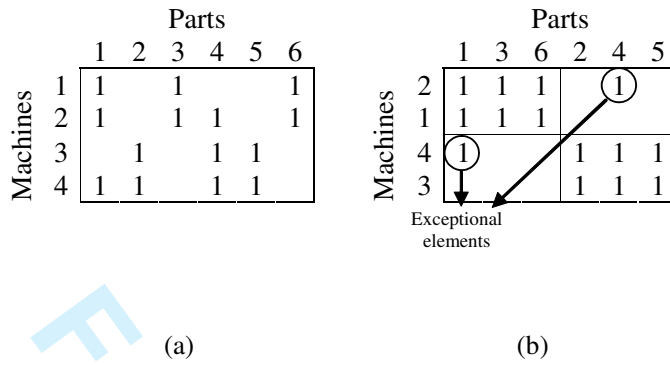
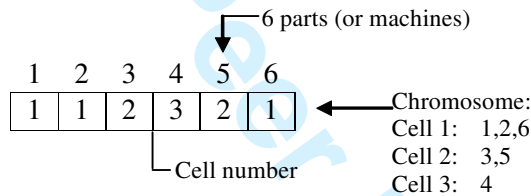


Figure 1. A machine-part incidence matrix: (a) the original matrix; (b) a rearranged



matrix into block-diagonal forms.

Figure 2. A general chromosome representation of GAs for the CFP.

1  
2  
3  
4  
5  
6  
7  
8  
9  
10  
11  
12  
13  
14  
15  
16  
17  
18  
19  
20  
21  
22  
23  
24  
25  
26  
27  
28  
29  
30  
31  
32  
33  
34  
35  
36  
37  
38  
39  
40  
41  
42  
43  
44  
45  
46  
47  
48  
49  
50  
51  
52  
53  
54  
55  
56  
57  
58  
59  
60

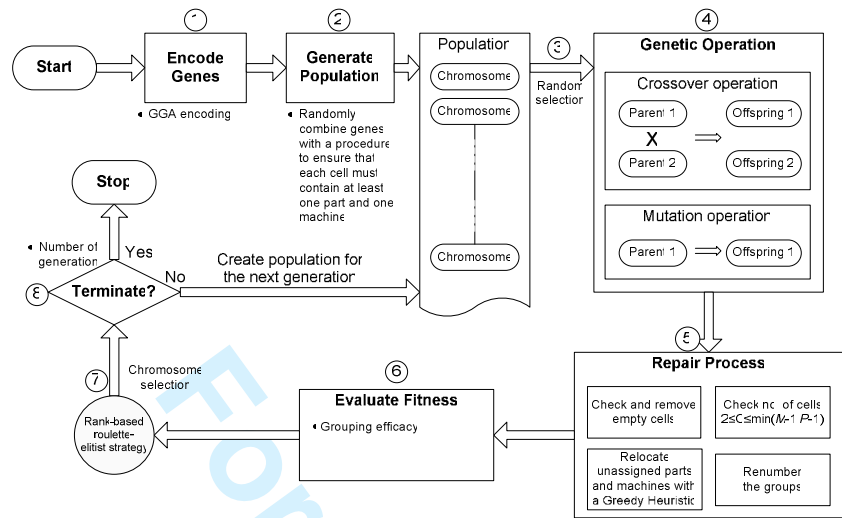


Figure 3. The general structure of the EnGGA.

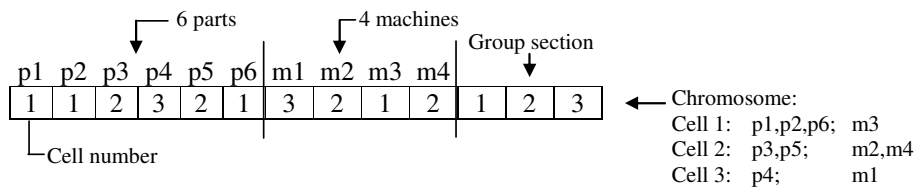
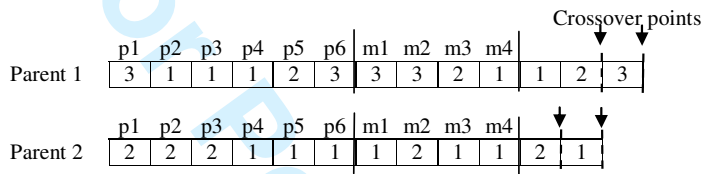
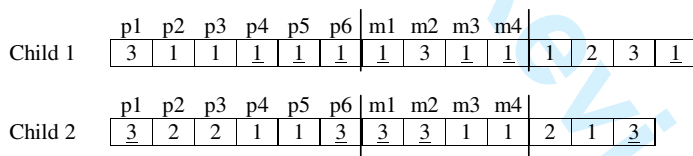


Figure 4. A chromosome representation of the EnGGA for the CFP.



(a) Select crossover points



(b) Injection

Figure 5. Falkenauer's crossover operator.

	p1	p2	p3	p4	p5	p6	m1	m2	m3	m4	Eliminated cell		
Parent	2	3	1	1	2	1	3	1	2	3	1	2	<del>3</del>
Child	2		1	1	2	1		1	2		1	2	

(a) Elimination mutation

	p1	p2	p3	p4	p5	p6	m1	m2	m3	m4	Selected cell		
Parent	2	2	2	1	1	1	1	2	1	1	2	1	
Child	2	2	2	1	3		3	2	1		2	1	3

(b) Division mutation

Figure 6. Falkenauer's mutation operators.

	p1	p2	p3	p4	p5	p6	m1	m2	m3	m4		
Child 1	3			1	1	1	1	3	1	1	3	1
Child 2	3			1	1	3	3	3	1	1	1	3

(a) Remove the empty cells

	p1	p2	p3	p4	p5	p6	m1	m2	m3	m4		
Child 1	3	1	3	1	1	1	1	3	1	1	3	1
Child 2	3	1	3	1	1	3	3	3	1	1	1	3

(b) Relocate unassigned parts and/or machines by the Greedy Heuristic

	p1	p2	p3	p4	p5	p6	m1	m2	m3	m4		
Child 1	1	2	1	2	2	2	2	1	2	2	1	2
Child 2	2	1	2	1	1	2	2	2	1	1	1	2

(c) Renumber the groups

Figure 7. The EnGGA repair process.

For Peer Review Only



1  
2  
3  
4  
5  
6  
7  
8  
9  
10  
11  
12  
13  
14  
15  
16  
17  
18  
19  
20  
21  
22  
23  
24  
25  
26  
27  
28  
29  
30  
31  
32  
33  
34  
35  
36  
37  
38  
39  
40  
41  
42  
43  
44  
45  
46  
47  
48  
49  
50  
51  
52  
53  
54  
55  
56  
57  
58  
59  
60

Table 1. Experimental parameter settings.

Parameter	Levels
Population size ( $P_{op}$ )	100 (data 1-9), 1000 (data 10-24)
Probability of crossover ( $P_c$ )	0.6,0.7,0.8,0.9,1.0
Probability of mutation ( $P_m$ )	0.1,0.2,0.3,0.4
No. of generations	50

For Peer Review Only

Table 2. Grouping efficacy comparisons of 13 clustering algorithms.

Problem source	Size	ZODIAC	GRAFICS	MST	TSP-GA	GP-GA	Zolfaghari & Liang's			EA-GA	CF-GGA	MOGGA	HGGA	EnGGA			
							SA	GA	TS					Max sol.	Pop	Time(s)	Gen
1. King and Nakornchai (1982)	5 × 7	73.68	73.68							73.68 <sup>b</sup>		82.35	82.35	100	<1	2	
2. Waghodekar and Sahu (1984, Fig. 4a)	5 × 7	56.52	60.87		68.00					62.50		69.57	69.57 <sup>a</sup>	100	<1	2	
3. Seifoddini (1989)	5 × 18				77.36					79.59		79.59	79.59	100	<1	3	
4. Kusiak and Cho (1992)	6 × 8				76.92					76.92		76.92	76.92	100	<1	3	
5. Kusiak and Chow (1987)	7 × 11	39.13	53.12		46.88		58.62	58.62	58.62	53.13		60.87	60.87 <sup>a</sup>	100	<1	6	
6. Boctor (1991, Fig. 1)	7 × 11				70.37					70.37		70.83	70.83 <sup>a</sup>	100	<1	3	
7. Seifoddini and Wolfe (1986)	8 × 12	68.30	68.30				68.29	68.29	68.29	68.30 <sup>b</sup>		69.44	69.44 <sup>a</sup>	100	<1	5	
8. Chandrasekharan and Rajagopalan (1986b)	8 × 20	85.24	85.24	85.24	85.24	85.20	85.25	85.25	85.25	85.25	85.25	85.25	85.25	100	<1	4	
9. Chandrasekharan and Rajagopalan (1986a)	8 × 20	58.33	58.13	58.72	58.33	58.70				58.72	56.88	58.72	58.72	100	<1	3	
10. McCormick, et al. (1972)	16 × 24	32.09	45.52	48.70						52.58 <sup>b</sup>		52.75	53.26 <sup>a</sup>	1000	21	10	
11. Srinivasan, et al. (1990)	16 × 30	67.83	67.83	67.83						67.83 <sup>b</sup>		68.99	68.99 <sup>a</sup>	1000	21	8	
12. King (1980)	16 × 43	53.76	54.39	54.44	53.89		53.93	53.63	52.25	54.86	53.70	55.43	57.53	1000	27	15	
13. Carrie (1973)	18 × 24	41.84	48.91	44.20						54.46 <sup>b</sup>	52.38	57.73	57.73 <sup>a</sup>	1000	25	9	
14. Carrie (1973)	20 × 35	75.14	75.14	75.14	75.28		76.70	75.14	70.33	62.37	76.22 <sup>b</sup>	77.91	77.91 <sup>a</sup>	1000	30	6	
15. Boe and Cheng (1991)	20 × 35						56.80	56.17	54.29	51.33	58.07 <sup>b</sup>		57.98	57.98 <sup>a</sup>	1000	26	8
16. Chandrasekharan and Rajagopalan (1989) Data 1	24 × 40	100.0	100.0	100.0	100.0	100.0	100.0	80.14	71.97	100.0	100.0	100.0	100.0	1000	28	6	
17. Chandrasekharan and Rajagopalan (1989) Data 2	24 × 40	85.11	85.11	85.11	85.11	85.10	85.11	68.32	66.46	85.11	85.11	85.11	85.11	1000	27	7	
18. Chandrasekharan and Rajagopalan (1989) Data 3	24 × 40		73.51	73.51	73.03	73.50	73.51	61.11	62.05	73.51	73.29	73.03	73.51	1000	23	10	
19. Chandrasekharan and Rajagopalan (1989) Data 5	24 × 40	20.42	43.27	51.81	49.37	53.30				51.88	48.98	48.98	53.29	1000	23	12	
20. Chandrasekharan and Rajagopalan (1989) Data 6	24 × 40	18.23	44.51	44.72	44.67	47.90				46.69	46.81	45.00	48.95	1000	22	15	
21. Chandrasekharan and Rajagopalan (1989) Data 7	24 × 40	17.61	41.67	44.17	42.50	43.70				44.75	44.14	41.90	47.26 <sup>c</sup>	1000	23	17	
22. McCormick, et al. (1972)	27 × 27	52.14	47.37	51.00						54.27 <sup>b</sup>		54.02	54.82 <sup>a</sup>	1000	22	8	
23. Kumar and Vannelli (1987)	30 × 41	33.46	55.43	55.29	53.80	60.70	42.75	39.64	37.28	58.11 <sup>b</sup>		63.31	63.31 <sup>a</sup>	1000	24	14	
24. McCormick, et al. (1972)	37 × 53	52.21	52.21							56.42 <sup>b</sup>		60.64	60.64 <sup>a</sup>	1000	38	8	

1  
2  
3  
4  
5  
6  
7  
8  
9  
10  
11  
12  
13  
14  
15  
16  
17  
18  
19  
20  
21  
22  
23  
24  
25  
26  
27  
28  
29  
30  
31  
32  
33  
34  
35  
36  
37  
38  
39  
40  
41  
42  
43  
44  
45  
46  
47

For Peer Review Only

<sup>a</sup>Solutions where singletons appear.

<sup>b</sup>Data reported in Goncalves and Resende (2004) was inconsistent with data in the original reference.

<sup>c</sup>Value reported in James, et al. (2007) was inconsistent with the value calculated from the block diagonal matrix for the solution.