



Cell centered Galerkin methods for diffusive problems

Daniele Antonio Di Pietro

► To cite this version:

Daniele Antonio Di Pietro. Cell centered Galerkin methods for diffusive problems. ESAIM: Mathematical Modelling and Numerical Analysis, 2011, 46 (1), pp.111-144. 10.1051/m2an/2011016 . hal-00511125v3

HAL Id: hal-00511125

<https://hal.science/hal-00511125v3>

Submitted on 28 Apr 2011

HAL is a multi-disciplinary open access archive for the deposit and dissemination of scientific research documents, whether they are published or not. The documents may come from teaching and research institutions in France or abroad, or from public or private research centers.

L'archive ouverte pluridisciplinaire **HAL**, est destinée au dépôt et à la diffusion de documents scientifiques de niveau recherche, publiés ou non, émanant des établissements d'enseignement et de recherche français ou étrangers, des laboratoires publics ou privés.

CELL CENTERED GALERKIN METHODS FOR DIFFUSIVE PROBLEMS*

DANIELE A. DI PIETRO¹

Abstract. In this work we introduce a new class of lowest order methods for diffusive problems on general meshes with only one unknown per element. The underlying idea is to construct an incomplete piecewise affine polynomial space with sufficient approximation properties starting from values at cell centers. To do so we borrow ideas from multi-point finite volume methods, although we use them in a rather different context. The incomplete polynomial space replaces classical complete polynomial spaces in discrete formulations inspired by discontinuous Galerkin methods. Two problems are studied in this work: a heterogeneous anisotropic diffusion problem, which is used to lay the pillars of the method, and the incompressible Navier–Stokes equations, which provide a more realistic application. An exhaustive theoretical study as well as a set of numerical examples featuring different difficulties are provided.

1991 Mathematics Subject Classification. 65N08, 65N30, 76D05.

April 28, 2011.

INTRODUCTION

Lowest order methods for diffusive problems on general meshes have received an increasing attention over the last few years. The interest of general meshes is multi-fold. On the one hand, allowing general polyhedral elements may ease the discretization of complex domains, and is beneficial in the context of aggregative multigrid strategies. On the other hand, it is a mandatory requirement whenever the user cannot adapt the mesh to the needs of the numerical scheme. This is the case, e.g., in the context of computational geosciences, where the discretization of the subsoil integrates the effects of erosion and sedimentation, and is usually developed in a separate stage. In what follows we briefly recall some ideas that are instrumental to the class of methods proposed in this paper. It is a well known fact that the classical two-point finite volume (FV) method is inconsistent on non diffusion-orthogonal meshes. In the context of reservoir simulation, a successful attempt to adapt FV methods to general meshes and full diffusion tensors has been independently proposed in the 90s by Aavatsmark, Barkve, Bøe, and Mannseth [1, 2] and by Edwards and Rogers [28, 29]. These methods are usually referred to as *multi-point* since the main idea is to express consistent numerical fluxes using a larger stencil than in the classical two-point FV method. In this paper we borrow some ideas from the recent multi-point scheme of Aavatsmark, Eigestad, Mallison, and Nordbotten [3], where the authors propose a compact construction to derive a consistent multi-point flux approximation honoring the heterogeneity of the diffusion

Keywords and phrases: Cell centered Galerkin, finite volumes, discontinuous Galerkin, heterogeneous anisotropic diffusion, incompressible Navier–Stokes equations

* This work has been partially supported by the VFSitCom ANR project (ANR-08-BLAN-0275-01) and by GDR MoMaS TC5 project

¹ IFP Energies nouvelles, 1 & 4 avenue de Bois Préau, 92582 Rueil-Malmaison Cedex

tensor. A convergence analysis of the *L-construction* proposed therein has been recently performed by Agélas, Di Pietro, and Droniou [4]. The main drawback of multi-point FV methods is related to the difficulty in finding easily computable stability conditions. A possible remedy to the lack of stability in multi-point methods has been proposed independently by Brezzi, Lipnikov, Shashkov, and Simoncini [11, 12] (Mimetic Finite Difference methods, MFD) and by Droniou, Eymard, Gallouët, and Herbin [26, 33] (Mixed/Hybrid Finite Volume methods, MHFV). Both classes of schemes are inspired from the variational form of the problem as in finite element (FE) methods rather than from local balances as in FV methods. The unconditional stability of both MFD and MHFV methods results from stabilization terms incorporated in the discrete bilinear form. Also, in both cases auxiliary face unknowns are added, which can be in some cases related to the enforcement of a flux conservation constraint as in the mixed FE method. A way to eliminate face unknowns has been proposed in [33], where it is suggested that a barycentric interpolator can be used to express face values in terms of a few neighboring cell unknowns. The main drawback of this construction is that it does not respect the heterogeneity of the diffusion tensor; moreover, the resulting method has a larger stencil compared to multi-point FV methods, which results in denser matrices as well as in the increase of data exchange in parallel implementations. The algebraic analogy between generalized versions of the MFD and MHFV methods has been recently pointed out by Droniou, Eymard, Gallouët, and Herbin [27].

In this work we propose a different philosophical approach to variational lowest-order methods which is inspired by discontinuous Galerkin (dG) methods rather than mixed FEs. The motivation is twofold. A first objective is to devise a suitable framework for a multi-physics platform based on lowest-order methods. In this respect, the main requirement is to dispose of a method easily adapted to a variety of diffusive problems including, e.g., pure diffusion, diffusion-advection-reaction, linear and nonlinear elasticity as well as incompressible flows. A second important point is related to the robustness in the context of heterogeneous anisotropic diffusion, which is crucial in the field of computational geosciences. Cell centered Galerkin (ccG) methods have been introduced in [20, 21] with application to a homogeneous diffusion problem. The main idea of ccG methods is to build an incomplete space of piecewise affine functions related to a given set of degrees of freedom (DOFs) on the mesh \mathcal{T}_h . In this work we consider, in particular, ccG methods with cell unknowns only, *i.e.*, the algebraic space of DOFs given by

$$\mathbb{V}_h := \mathbb{R}^{\mathcal{T}_h}.$$

The unknown in each mesh element $T \in \mathcal{T}_h$ is interpreted as the value of the discrete function at a given point \mathbf{x}_T (the cell center). For $k \geq 0$ we define the space of broken polynomials on \mathcal{T}_h of degree $\leq k$,

$$\mathbb{P}_d^k(\mathcal{T}_h) := \{v \in L^2(\Omega) \mid \forall T \in \mathcal{T}_h, v|_T \in \mathbb{P}_d^k(T)\}, \quad (1)$$

with $\mathbb{P}_d^k(T)$ given by the restriction to T of the functions in \mathbb{P}_d^k . A piecewise affine representation is then obtained by reconstructing a constant gradient on \mathcal{T}_h , say $\mathfrak{G}_h : \mathbb{V}_h \rightarrow [\mathbb{P}_d^0(\mathcal{T}_h)]^d$, and introducing the linear operator $\mathfrak{R}_h^{\text{ccg}} : \mathbb{V}_h \rightarrow \mathbb{P}_d^1(\mathcal{T}_h)$ which maps every set of degrees of freedom $\mathbf{v}_h \in \mathbb{V}_h$ onto $\mathfrak{R}_h(\mathbf{v}_h) \in \mathbb{P}_d^1(\mathcal{T}_h)$ such that

$$\forall T \in \mathcal{T}_h, \forall \mathbf{x} \in T, \quad \mathfrak{R}_h(\mathbf{v}_h)|_T(\mathbf{x}) = v_T + \mathfrak{G}_h(\mathbf{v}_h)|_T \cdot (\mathbf{x} - \mathbf{x}_T).$$

In the present work, the elementary gradient is obtained in two steps: first, trace values are reconstructed from values at cell centers by means of the L-construction, then Green's formula is used to infer a local value for the gradient. Formally, this procedure amounts to defining the discrete space

$$V_h^{\text{ccg}} := \mathfrak{R}_h^{\text{ccg}}(\mathbb{V}_h) \subset \mathbb{P}_d^1(\mathcal{T}_h).$$

The space V_h^{ccg} is then used as a test/trial space in a suitable nonconforming FE setting. In particular, since the functions in V_h^{ccg} are discontinuous across mesh interfaces, the discrete setting largely borrows from dG methods. We consider two applications to problems naturally set in $H^1(\Omega)$: a homogeneous anisotropic scalar diffusion problem and the incompressible Navier–Stokes equations. The scalar diffusion problem offers a simplified context to outline the main ideas of the method. The convergence analysis is here discussed in detail. In particular, we show that both classical dG arguments relying on error estimates [7] and compactness

arguments inspired by [32, 33] apply. For the latter point, an key remark is that the functional analytic results for broken polynomial spaces derived independently by Di Pietro and Ern [22] and Buffa and Ortner [14] hold *a fortiori* since $V_h^{\text{ccg}} \subset \mathbb{P}_d^1(\mathcal{T}_h)$. In the context of h -convergence analysis the main technical issue is related to the approximation properties of the V_h^{ccg} space. The application to the incompressible Navier–Stokes equations provides a nonlinear case study to illustrate how a ccG method can be derived from an existing dG method.

The material is organized as follows: in §1 we discuss the discrete setting, provide a careful description of admissible mesh sequences in arbitrary space dimension, introduce the L-construction, and define the ccG space used throughout the rest of this work. Some functional analytical results are also recalled; in §2 we show an application of the ccG method to a heterogeneous anisotropic diffusion problem, derive basic error estimates and carefully study convergence rates. The main sources of inspiration are here the work of Arnold [6] on the weak enforcement of boundary and interface conditions and that of Di Pietro, Ern, and Guermond [25] on the robust handling of heterogeneous anisotropic diffusion tensors. To infer convergence rates we study the approximation properties of the space V_h^{ccg} with respect to the energy norm naturally associated to the discrete problem. In particular, we distinguish between the heterogeneous case, where optimal energy estimates are obtained for functions belonging to the space introduced and analyzed in [4], and the homogeneous case, where weaker regularity assumptions are sufficient and L^2 -error estimates can also be derived; in §3 we discuss the application of ccG methods to the incompressible Navier–Stokes equations inspired from the dG scheme of [22]. In this case, a H^1 -stability result for ccG spaces is crucial to infer the stability of the velocity-pressure coupling. The analysis closely follows the guidelines of [22]; finally, in §4 we present numerical results to assess the theoretical study for both problems at hand.

1. THE CCG SPACE

1.1. Discrete setting

Closely following [23, Chapter 1], we introduce the concept of *admissible mesh sequence* of a bounded connected polyhedral domain $\Omega \subset \mathbb{R}^d$, $d \geq 1$. Let $\mathcal{H} \subset \mathbb{R}_+^*$ denote a countable set having 0 as its unique accumulation point. For all $h \in \mathcal{H}$ we denote by \mathcal{T}_h a finite collection of nonempty, disjoint open polyhedra $\mathcal{T}_h = \{T\}$ forming a partition of Ω such that $h = \max_{T \in \mathcal{T}_h} h_T$, with h_T denoting the diameter of the element $T \in \mathcal{T}_h$. Mesh nodes are collected in the set \mathcal{N}_h . We say that a hyperplanar closed subset F of $\overline{\Omega}$ is a mesh face if it has positive $(d-1)$ -dimensional measure and if either there exist $T_1, T_2 \in \mathcal{T}_h$ such that $F \subset \partial T_1 \cap \partial T_2$ (and F is called an *interface*) or there exist $T \in \mathcal{T}_h$ such that $F \subset \partial T \cap \partial \Omega$ (and F is called a *boundary face*). Interfaces are collected in the set \mathcal{F}_h^i , boundary faces in \mathcal{F}_h^b and we let $\mathcal{F}_h := \mathcal{F}_h^i \cup \mathcal{F}_h^b$. For a face $F \in \mathcal{F}_h$ we denote by h_F its diameter. Moreover, we set, for all $T \in \mathcal{T}_h$,

$$\mathcal{F}_T := \{F \in \mathcal{F}_h \mid F \subset \partial T\}. \quad (2)$$

Similarly, for all $F \in \mathcal{F}_h$, we define

$$\mathcal{T}_F := \{T \in \mathcal{T}_h \mid F \subset \partial T\}.$$

The set \mathcal{T}_F consists of exactly two mesh elements if $F \in \mathcal{F}_h^i$ and of one if $F \in \mathcal{F}_h^b$. For all mesh nodes $P \in \mathcal{N}_h$, \mathcal{F}_P denotes the set of mesh faces sharing (at least) P , *i.e.*

$$\mathcal{F}_P := \{F \in \mathcal{F}_h \mid P \in F\}. \quad (3)$$

For every interface $F \in \mathcal{F}_h^i$ we introduce an arbitrary but fixed ordering of the elements in \mathcal{T}_F and let $\mathbf{n}_F = \mathbf{n}_{T_1, F} = -\mathbf{n}_{T_2, F}$, where $\mathbf{n}_{T_i, F}$, $i \in \{1, 2\}$, denotes the unit normal to F pointing out $T_i \in \mathcal{T}_F$. For all $T \in \mathcal{T}_h$, we also introduce the symbol \mathbf{n}_T to denote the vector field such that $\mathbf{n}_{T|F} = \mathbf{n}_{T, F}$ for all $F \in \mathcal{F}_T$. On a boundary face $F \in \mathcal{F}_h^b$ we let \mathbf{n}_F denote the unit normal pointing out of Ω . The barycenter of a face $F \in \mathcal{F}_h$ is denoted by $\bar{\mathbf{x}}_F := \int_F \mathbf{x} / |F|_{d-1}$.

Definition 1 (Jumps and weighted averages). *Let v be a scalar-valued function defined on Ω , and assume that v is smooth enough to admit on all $F \in \mathcal{F}_h$ a possibly two-valued trace. To any interface $F \in \mathcal{F}_h^i$ with $F \subset \partial T_1 \cap \partial T_2$ we assign two non-negative real numbers $\omega_{T_1, F}$ and $\omega_{T_2, F}$ such that*

$$\omega_{T_1, F} + \omega_{T_2, F} = 1.$$

Then, if $F \in \mathcal{F}_h^i$ with $F = \partial T_1 \cap \partial T_2$ the jump and weighted average of v at F are respectively defined for a.e. $\mathbf{x} \in F$ as

$$[[v]]_F(\mathbf{x}) := v|_{T_1} - v|_{T_2}, \quad \{v\}_{\omega, F}(\mathbf{x}) := \omega_{T_1, F} v|_{T_1}(\mathbf{x}) + \omega_{T_2, F} v|_{T_2}(\mathbf{x}),$$

while, if $F \in \mathcal{F}_h^b$ with $F = \partial T \cap \partial \Omega$, we set $\{v\}_{\omega, F}(\mathbf{x}) = [[v]]_F(\mathbf{x}) = v|_T(\mathbf{x})$.

When v is vector-valued, the jump and average operators act component-wise. Whenever no confusion can arise, the subscript F and the variable \mathbf{x} are omitted, and we simply write $\{v\}_{\omega}$ and $[[v]]$. Moreover, in the classical case $\omega_{T_1, F} = \omega_{T_2, F} = 1/2$ we also omit the subscript ω and write $\{v\}$ instead of $\{v\}_{\omega}$. The use of weighted averages in dG methods has been pointed out and used in various contexts, e.g., by Stenberg [42] and by Heinrich and Pietsch [36].

Definition 2 (Matching simplicial submesh). *Let \mathcal{T}_h be a general mesh. We say that \mathfrak{S}_h is a matching simplicial submesh of \mathcal{T}_h if (i) \mathfrak{S}_h is a matching simplicial mesh, (ii) for all $T' \in \mathfrak{S}_h$, there is only one $T \in \mathcal{T}_h$ such that $T' \subset T$, (iii) for all $F' \in \mathfrak{F}_h$, the set collecting the mesh faces of \mathfrak{S}_h , there is at most $F \in \mathcal{F}_h$ such that $F' \subset F$.*

Definition 3 (Shape- and contact-regularity). *We say that the mesh sequence*

$$\mathcal{T}_{\mathcal{H}} := (\mathcal{T}_h)_{h \in \mathcal{H}}$$

is shape- and contact-regular if for all $h \in \mathcal{H}$, \mathcal{T}_h admits a matching simplicial submesh \mathfrak{S}_h such that (i) the mesh sequence $(\mathfrak{S}_h)_{h \in \mathcal{H}}$ is shape-regular in the usual sense of Ciarlet [18], meaning that there is a parameter $\varrho_1 > 0$ independent of h such that for all $T' \in \mathfrak{S}_h$,

$$\varrho_1 h_{T'} \leq \delta_{T'},$$

where $h_{T'}$ is the diameter of T' and $\delta_{T'}$ the radius of the largest ball inscribed in T' , (ii) there is a parameter $\varrho_2 > 0$ independent of h such that for all $T \in \mathcal{T}_h$ and for all $T' \in \mathfrak{S}_T$,

$$\varrho_2 h_T \leq h_{T'}.$$

The following result is proven as in [23, Chapter 1].

Lemma 4 (Bounds on geometric quantities). *Let $\mathcal{T}_{\mathcal{H}}$ be a shape- and contact-regular mesh sequence. Then, for all $h \in \mathcal{H}$ and all $T \in \mathcal{T}_h$, (i) the number of mesh faces belonging to the boundary of an element is uniformly bounded in h ,*

$$N_{\partial} := \sup_{h \in \mathcal{H}, T \in \mathcal{T}_h} \text{card}(\mathcal{F}_T) < +\infty;$$

(ii) for all $F \in \mathcal{F}_T$,

$$h_F \geq \varrho_1 \varrho_2 h_T. \quad (4)$$

For all $h \in \mathcal{H}$ and $k \geq 0$, we consider the broken polynomial spaces $\mathbb{P}_d^k(\mathcal{T}_h)$ defined by (1). Broken polynomial spaces are a special instance of broken Sobolev spaces: For all $k \geq 1$,

$$H^k(\mathcal{T}_h) := \{v \in L^2(\Omega) \mid \forall T \in \mathcal{T}_h, v|_T \in H^k(T)\}.$$

The shape- and contact-regularity of the mesh sequence $\mathcal{T}_{\mathcal{H}}$ are essential to infer the following results; see, e.g., [23, Chapter 1].

Lemma 5 (Trace inequalities). *Let $\mathcal{T}_\mathcal{H}$ be a shape- and contact-regular mesh sequence. Then, for all $h \in \mathcal{H}$, all $T \in \mathcal{T}_h$, and all $F \in \mathcal{F}_T$,*

$$\forall v_h \in \mathbb{P}_d^k(\mathcal{T}_h), \quad \|v_h\|_{L^2(F)} \leq C_{\text{tr}} h_F^{-1/2} \|v_h\|_{L^2(T)}, \quad (5)$$

$$\forall v \in H^1(\mathcal{T}_h), \quad \|v\|_{L^2(F)} \leq C_{\text{tr},c} \left(h_T^{-1} \|v\|_{L^2(T)}^2 + h_T |v|_{H^1(T)}^2 \right)^{1/2}, \quad (6)$$

with C_{tr} and $C_{\text{tr},c}$ independent of the meshsize h but depending on the polynomial degree k .

The following property is necessary to obtain optimal estimates of the convergence rate.

Definition 6 (Optimal polynomial approximation). *We say that the mesh sequence $\mathcal{T}_\mathcal{H}$ has optimal polynomial approximation properties if for all $h \in \mathcal{H}$, all $T \in \mathcal{T}_h$, and all polynomial degree $k \geq 0$, there is a polynomial $p^k \in \mathbb{P}_d^k(T)$ such that, for all $s \in \{0, \dots, k+1\}$ and all $v \in H^s(T)$, there holds*

$$|v - p^k|_{H^m(T)} \leq C_{\text{app}} h_T^{s-m} |v|_{H^s(T)} \quad \forall m \in \{0, \dots, s\},$$

with C_{app} independent of both T and h .

The approximation property is a consequence of the Bramble–Hilbert lemma (see, e.g., [10, Lemma 4.3.8]) for mesh sequences featuring general elements whose chunkiness parameter is bounded from above uniformly with respect to h . We recall that the chunkiness parameter is defined for an element $T \in \mathcal{T}_h$, $h \in \mathcal{H}$, as the ratio $h_T/r_{\max,T}$, where $r_{\max,T} := \sup\{r \in \mathbb{R}^+ \mid T \text{ is star-shaped with respect to } r\}$. Using the optimality of the L^2 -orthogonal projection in the L^2 -norm, one can easily infer that the L^2 -orthogonal projection has optimal polynomial approximation properties on mesh sequences with optimal approximation properties; see [23, Chapter 1]. In what follows, we mainly use the optimal polynomial approximation for polynomial degrees up to 1. Higher polynomial degrees are only needed in view of k -adaptivity; cf. Remark 13.

In order to obtain a piecewise affine representation, we associate the unique degree of freedom of each element to a point inside the cell.

Definition 7 (Cell centers). *Let $\mathcal{T}_\mathcal{H}$ be a shape- and contact-regular mesh sequence. We say that $\mathcal{T}_\mathcal{H}$ admits a set of cell centers if (i) for every $T \in \mathcal{T}_h$ there exists a point \mathbf{x}_T such that T is star-shaped with respect to \mathbf{x}_T (the cell-center) and (ii) there exists $\varrho_3 > 0$ such that for all $h \in \mathcal{H}$, all $T \in \mathcal{T}_h$, and all $F \in \mathcal{F}_T$,*

$$d_{T,F} := \text{dist}(\mathbf{x}_T, F) \geq \varrho_3 h_T. \quad (7)$$

Definition 8 (Admissible mesh sequence). *We say that the mesh sequence $\mathcal{T}_\mathcal{H}$ is admissible if it is shape- and contact-regular, it possesses optimal approximation properties, and it admits a set of cell centers.*

In what follows we always work with admissible mesh sequences. For the sake of brevity, this assumption is understood in most of the cases. Admissible mesh sequences include general polyhedral discretizations with possibly nonconforming interfaces; see Figure 1 for an example. For all $h \in \mathcal{H}$ we can define a pyramidal submesh of \mathcal{T}_h as follows:

$$\mathcal{S}_h := \{\mathcal{P}_{T,F}\}_{T \in \mathcal{T}_h, F \in \mathcal{F}_T}, \quad (8)$$

where, for all $T \in \mathcal{T}_h$ and all $F \in \mathcal{F}_T$, $\mathcal{P}_{T,F}$ denotes the open pyramid of apex \mathbf{x}_T and base F , i.e.,

$$\mathcal{P}_{T,F} := \{\mathbf{x} \in T \mid \exists \mathbf{y} \in F \setminus \partial F, \exists \theta \in (0, 1) \mid \mathbf{x} = \theta \mathbf{y} + (1 - \theta) \mathbf{x}_T\}.$$

The pyramids $\{\mathcal{P}_{T,F}\}_{T \in \mathcal{T}_h, F \in \mathcal{F}_T}$ are non-degenerated owing to assumption (7). Since faces are planar, for all $T \in \mathcal{T}_h$ and all $F \in \mathcal{F}_T$ there holds

$$|\mathcal{P}_{T,F}|_d = \frac{|F|_{d-1} d_{T,F}}{d}, \quad (9)$$

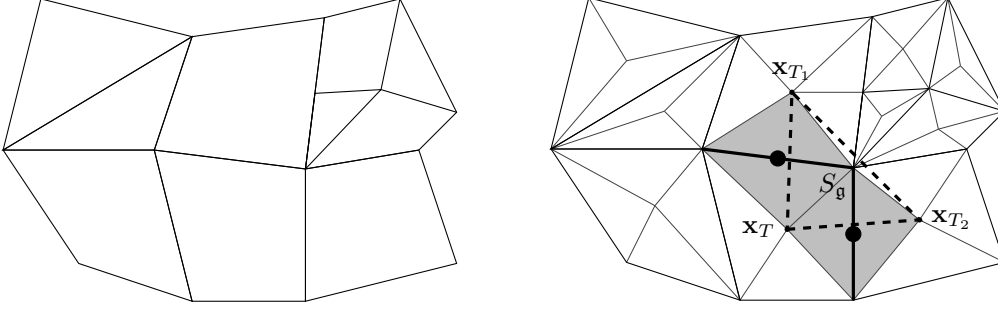


FIGURE 1. Mesh \mathcal{T}_h (left panel), submesh \mathcal{S}_h (right panel, thin lines), and simplex $S_{\mathbf{g}}$ (right panel, dashed) for the L-group \mathbf{g} in bold line. The faces belonging to the group \mathbf{g} are marked with a dot; the patch $\mathcal{P}_{\mathbf{g}}$ is shaded.

and, for all $T \in \mathcal{T}_h$,

$$\sum_{F \in \mathcal{F}_T} |\mathcal{P}_{T,F}|_d = \sum_{F \in \mathcal{F}_T} \frac{|F|_{d-1} d_{T,F}}{d} = |T|_d. \quad (10)$$

1.2. The L-construction

In this section we briefly recall the L-construction originally introduced in [3] and analyzed in [4]; see also Cao, Helmig and Wohlmuth [17]. This construction is an important ingredient in the definition of the ccG spaces presented in this work. Let P_Ω denote a given partition of Ω into bounded connected polyhedral domains corresponding, e.g., to regions with different physical properties. When considering refined mesh sequences \mathcal{T}_h , throughout the rest of this work we understand the following assumption, which is stated once and for all for the sake of conciseness.

Assumption 9 (Mesh compatibility). *For all $h \in \mathcal{H}$, \mathcal{T}_h is compatible with the partition P_Ω .*

Let $\boldsymbol{\kappa} \in [L^\infty(\Omega)]^{d,d}$ denote a symmetric, uniformly elliptic tensor field piecewise constant on P_Ω . Clearly, owing to Assumption 9, $\boldsymbol{\kappa}$ is such that

$$\forall h \in \mathcal{H}, \quad \boldsymbol{\kappa} \in [\mathbb{P}_d^0(\mathcal{T}_h)]^{d,d}. \quad (11)$$

We assume that the spectrum of $\boldsymbol{\kappa}(\mathbf{x})$ is bounded from below by $\underline{\lambda}$ for a.e. $\mathbf{x} \in \Omega$ and we let $\bar{\lambda} := \|\boldsymbol{\kappa}\|_{[L^\infty(\Omega)]^{d,d}}$. We also denote by $\boldsymbol{\kappa}^{1/2}$ the piecewise symmetric, uniformly elliptic tensor field such that $\boldsymbol{\kappa}^{1/2}(\mathbf{x})\boldsymbol{\kappa}^{1/2}(\mathbf{x}) = \boldsymbol{\kappa}(\mathbf{x})$ for a.e. $\mathbf{x} \in \Omega$. For all $F \in \mathcal{F}_h$ and all $T \in \mathcal{T}_F$ we denote the diffusion coefficient in the normal direction by

$$\lambda_{T,F} := \boldsymbol{\kappa}|_T \mathbf{n}_F \cdot \mathbf{n}_F.$$

The key idea of the L-construction is to use d cell and boundary face values (provided, in this case, by a homogeneous boundary condition) to express a continuous piecewise affine function with continuous diffusive fluxes. The values are selected using d neighboring faces belonging to a cell and sharing a common vertex. More precisely, we define the set of *L-groups* as follows:

$$\mathcal{G} := \{\mathbf{g} \subset \mathcal{F}_T \cap \mathcal{F}_P, T \in \mathcal{T}_h, P \in \mathcal{N}_h \mid \text{card}(\mathbf{g}) = d\},$$

with \mathcal{F}_T and \mathcal{F}_P given by (2) and (3) respectively. For each $\mathbf{g} \in \mathcal{G}$ we select a *primary element* $T_{\mathbf{g}}$ such that $\mathbf{g} \subset \mathcal{F}_{T_{\mathbf{g}}}$; see Figure 2(a). Such an element may not be unique as non-convex elements are allowed. We let, for the sake of brevity,

$$\mathbf{g}^i := \mathbf{g} \cap \mathcal{F}_h^i, \quad \mathbf{g}^b := \mathbf{g} \cap \mathcal{F}_h^b.$$

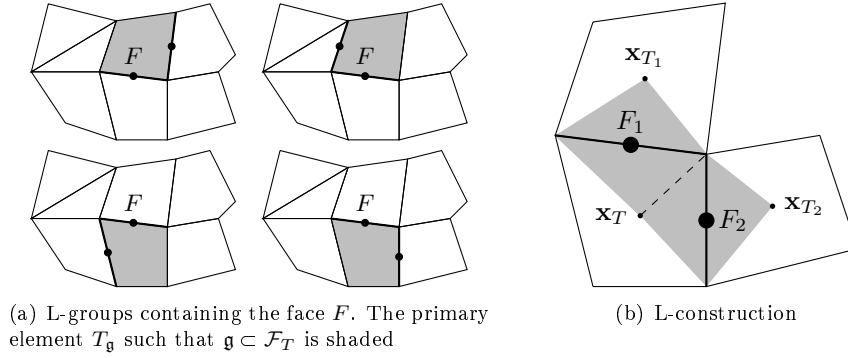


FIGURE 2. L-construction. Group faces are marked with a dot

It is also useful to introduce a symbol for the set of cells concurring in the L-construction as well as for the union of the pyramids based on the group faces (see Figure 2): For all $\mathbf{g} \in \mathcal{G}$,

$$\mathcal{T}_{\mathbf{g}} := \{T \in \mathcal{T}_h \mid T \in \mathcal{T}_F, F \in \mathbf{g}\}, \quad \mathcal{P}_{\mathbf{g}} := \bigcup_{F \in \mathbf{g}, T \in \mathcal{T}_F} \mathcal{P}_{T,F}. \quad (12)$$

The patch $\mathcal{P}_{\mathbf{g}}$ is shaded in the right panel of Figure 1 and in Figure 2(b). Let now $\mathbf{g} \in \mathcal{G}$. In what follows, for any set $D \subset \mathbb{R}^d$ of codimension l we denote by $\langle \varphi \rangle_D$ the average $\langle \varphi \rangle_D := \int_D \varphi / |D|_{d-l}$. For all $\mathbf{v}_h \in \mathbb{V}_h$ we construct the piecewise function $\xi_{\mathbf{v}_h}^{\mathbf{g}}$ affine inside every pyramid in the family $\{\mathcal{P}_{T,F}\}_{F \in \mathbf{g}, T \in \mathcal{T}_F}$ and such that:

- (i) $\xi_{\mathbf{v}_h}^{\mathbf{g}}(\mathbf{x}_T) = v_T$ for all $T \in \mathcal{T}_{\mathbf{g}}$ and $\langle \xi_{\mathbf{v}_h}^{\mathbf{g}} \rangle_F = \xi_{\mathbf{v}_h}^{\mathbf{g}}(\bar{\mathbf{x}}_F) = 0$ for all $F \in \mathbf{g}^b$;
- (ii) $\xi_{\mathbf{v}_h}^{\mathbf{g}}$ is affine inside the primary element $T_{\mathbf{g}}$ and it is continuous across every interface in the group: For all $F \in \mathbf{g}^i$ such that $F \subset \partial T_1 \cap \partial T_2$,

$$\forall \mathbf{x} \in F, \quad \xi_{\mathbf{v}_h}^{\mathbf{g}}|_{T_1}(\mathbf{x}) = \xi_{\mathbf{v}_h}^{\mathbf{g}}|_{T_2}(\mathbf{x});$$

- (iii) $\xi_{\mathbf{v}_h}^{\mathbf{g}}$ has continuous diffusive flux across every interface in the group: For all $F \in \mathbf{g}^i$ such that $F \subset \partial T_1 \cap \partial T_2$,

$$(\kappa \nabla \xi_{\mathbf{v}_h}^{\mathbf{g}})|_{T_1} \cdot \mathbf{n}_F = (\kappa \nabla \xi_{\mathbf{v}_h}^{\mathbf{g}})|_{T_2} \cdot \mathbf{n}_F.$$

(The quantities in both sides are constant since $\xi_{\mathbf{v}_h}^{\mathbf{g}}$ is piecewise affine and the face F is planar).

The following result is instrumental to derive approximation properties for the ccG space.

Proposition 10 (L-construction). *For all $\mathbf{v}_h \in \mathbb{V}_h$ and all $\mathbf{g} \in \mathcal{G}$, there holds*

$$\mathbf{A}_{\mathbf{g}}(\nabla \xi_{\mathbf{v}_h}^{\mathbf{g}})|_{T_{\mathbf{g}}} = \mathbf{b}_{\mathbf{g}}(\mathbf{v}_h), \quad (13)$$

where the matrix $\mathbf{A}_{\mathbf{g}} \in \mathbb{R}^{d,d}$ and the linear application $\mathbf{b}_{\mathbf{g}} : \mathbb{V}_h \rightarrow \mathbb{R}^d$ are defined row-wise by

$$\mathbf{A}_{\mathbf{g}} := \begin{bmatrix} \left(\frac{\lambda_{T,F}}{d_{T,F}} (\mathbf{x}_T - \mathbf{x}_{T_{\mathbf{g}}}) + \kappa_{T_{\mathbf{g}}} \mathbf{n}_{T_{\mathbf{g}},F} + \kappa_{T,F} \mathbf{n}_{T,F} \right)_{\mathbf{g}^i \ni F \subset T_{\mathbf{g}} \cap T}^t \\ \left(\frac{\lambda_{T_{\mathbf{g}},F}}{d_{T_{\mathbf{g}},F}} (\bar{\mathbf{x}}_F - \mathbf{x}_{T_{\mathbf{g}}}) \right)_{F \in \mathbf{g}^b}^t \end{bmatrix}, \quad \mathbf{b}_{\mathbf{g}}(\mathbf{v}_h) = \begin{bmatrix} \left(\frac{\lambda_{T,F}}{d_{T,F}} (v_T - v_{T_{\mathbf{g}}}) \right)_{\mathbf{g}^i \ni F \subset T_{\mathbf{g}} \cap T} \\ \left(-\frac{\lambda_{T_{\mathbf{g}},F}}{d_{T_{\mathbf{g}},F}} v_{T_{\mathbf{g}}} \right)_{F \in \mathbf{g}^b} \end{bmatrix}. \quad (14)$$

Proof. See [4, Lemma 3.1]. □

In order to express $\xi_{\mathbf{v}_h}^{\mathbf{g}}$ terms of the values $\{v_T\}_{T \in \mathcal{T}_{\mathbf{g}}}$, the matrix $\mathbf{A}_{\mathbf{g}}$ must be invertible. Simple sufficient invertibility conditions are discussed in what follows. In practice, however, the invertibility can be checked directly, and backup strategies can be devised; see Remark 12.

1.3. The ccG space

In this section we introduce a ccG space based on the L-construction and on a local gradient inspired by Green's formula. For a face $F \in \mathcal{F}_h^i$, let \mathcal{G}_F denote the set of L-groups containing F ,

$$\mathcal{G}_F := \{\mathbf{g} \in \mathcal{G} \mid F \in \mathbf{g}\}.$$

Assumption 11 (Existence of an L-group leading to an invertible matrix for each interface). *We assume that, for all $F \in \mathcal{F}_h^i$, \mathcal{G}_F is non-empty and there exists $\mathbf{g} \in \mathcal{G}_F$ such that the matrix $\mathbf{A}_{\mathbf{g}}$ defined by (14) is invertible.*

For the sake of simplicity, Assumption 11 holds tacitly from this point on. Should this not be true, backup strategies can be envisaged, as discussed in Remark 12. The discrete gradient is obtained as follows:

- (i) For every $F \in \mathcal{F}_h^i$ we select a *unique L-group* \mathbf{g}_F yielding an invertible matrix and, for all $\mathbf{v}_h \in \mathbb{V}_h$, we denote by $\xi_{\mathbf{v}_h}^{\mathbf{g}_F}$ the piecewise affine function obtained from the L-construction and supported in the patch $\mathcal{P}_{\mathbf{g}_F}$. Whenever more than one such group is present, we select $\mathbf{g} \in \mathcal{G}_F$ for which $\|\mathbf{A}_{\mathbf{g}}^{-1}\|_2$ is minimal (this ensures the best approximation properties; see Lemma 22 and Assumption 23). For convenience of notation, for all boundary faces $F \subset \partial T \cap \partial \Omega$ we introduce the affine function $\xi_{\mathbf{v}_h}^{\mathbf{g}_F}$ on $\mathcal{P}_{T,F}$ such that $\xi_{\mathbf{v}_h}^{\mathbf{g}_F}|_F \equiv 0$ on F and $\xi_{\mathbf{v}_h}^{\mathbf{g}_F}(\mathbf{x}_T) = v_T$. Such a function is well-defined since faces are planar.
- (ii) We then define the *trace reconstruction operator* $\mathfrak{T}_h : \mathbb{V}_h \rightarrow \mathbb{R}^{\mathcal{F}_h}$ which realizes the mapping $\mathbb{V}_h \ni \mathbf{v}_h \mapsto \mathfrak{T}_h(\mathbf{v}_h) = (v_F)_{F \in \mathcal{F}_h}$ with $(v_F)_{F \in \mathcal{F}_h} \in \mathbb{R}^{\mathcal{F}_h}$ and, for all $F \in \mathcal{F}_h$,

$$v_F = \langle \xi_{\mathbf{v}_h}^{\mathbf{g}_F} \rangle_F = \xi_{\mathbf{v}_h}^{\mathbf{g}_F}(\bar{\mathbf{x}}_F). \quad (15)$$

- (iii) The *gradient reconstruction operator* $\mathfrak{G}_h : \mathbb{V}_h \rightarrow [\mathbb{P}_d^0(\mathcal{T}_h)]^d$ is defined following Droniou and Eymard [26] as the application $\mathbb{V}_h \ni \mathbf{v}_h \mapsto \mathfrak{G}_h(\mathbf{v}_h) \in [\mathbb{P}_d^0(\mathcal{T}_h)]^d$ with

$$\forall T \in \mathcal{T}_h, \quad \mathfrak{G}_h(\mathbf{v}_h)|_T = \frac{1}{|T|^d} \sum_{F \in \mathcal{F}_T} |F|_{d-1} (v_F - v_T) \mathbf{n}_{T,F}. \quad (16)$$

where we have set $(v_F)_{F \in \mathcal{F}_h} = \mathfrak{T}_h(\mathbf{v}_h)$.

The expression (16) is inspired by Green's formula. As such, v_F has to be related to the average on the face F . For affine functions, the average coincides with the barycentric value, thereby justifying the choice in (15). The linear reconstruction operator $\mathfrak{R}_h^{\text{ccg}} : \mathbb{V}_h \rightarrow \mathbb{P}_d^1(\mathcal{T}_h)$ leading to the ccG space is finally defined as the mapping $\mathbb{V}_h \ni \mathbf{v}_h \mapsto v_h \in \mathbb{P}_d^1(\mathcal{T}_h)$ with

$$\forall T \in \mathcal{T}_h, \forall \mathbf{x} \in T, \quad v_h|_T(\mathbf{x}) = v_T + \mathfrak{G}_h(\mathbf{v}_h)|_T \cdot (\mathbf{x} - \mathbf{x}_T). \quad (17)$$

In the above formula, v_T is interpreted as the point value in \mathbf{x}_T . The incomplete polynomial space V_h^{ccg} upon which the ccG method relies is the image of the algebraic space of degrees of freedom \mathbb{V}_h through $\mathfrak{R}_h^{\text{ccg}}$,

$$V_h^{\text{ccg}} := \mathfrak{R}_h^{\text{ccg}}(\mathbb{V}_h) \subset \mathbb{P}_d^1(\mathcal{T}_h).$$

Proceeding by contradiction, it is a simple matter to prove that $\mathfrak{R}_h^{\text{ccg}}$ is injective from \mathbb{V}_h to $\mathbb{P}_d^1(\mathcal{T}_h)$ and, hence, bijective from \mathbb{V}_h to V_h^{ccg} . It is also useful to observe that the discrete space V_h^{ccg} is contained in the larger broken Sobolev space $H^1(\mathcal{T}_h)$.

Remark 12 (Backup strategies). Numerical evidence [3, 4] shows that Assumption 11 is true in most circumstances. In the presence of highly heterogeneous diffusion tensors or for extremely deformed meshes, it may occur, however, that no L-group yielding an invertible matrix can be found for some interfaces. In this case, several backup strategies are possible, and the choice can be mostly guided by the implementation at hand. We mention two possibilities, although others are possible. A first strategy relying on the tight link of ccG methods to dG methods consists in using a full \mathbb{P}_d^1 basis on the mesh elements which have at least one face for which no invertible L-group exists. This results in a local increase of the number of unknowns but yields a completely robust method. Whenever exactly one unknown per cell is allowed, the L-construction can be replaced by the barycentric interpolator of [33, §2.2]. The method can then be constructed provided the d points involved in the barycentric interpolation form a non-degenerate simplex (an extremely mild mesh regularity assumption). In this case, however, a local loss of precision may be observed as the barycentric interpolator does not honor the heterogeneity of κ . We emphasize that no backup strategy whatsoever was required in the numerical examples of §4.

Remark 13 (k -adaptivity). In the spirit of the previous remark, the polynomial degree can be adapted in ccG methods by using full polynomial spaces inside selected elements. This is naturally handled whenever the discrete formulation relying on the ccG space is inspired by a dG method, as is the case for all the examples provided in this work.

1.4. Discrete functional analysis

This section collects some discrete functional analysis results that are used in the rest of the paper. The material is mainly adapted from [22, §6], to which we refer for further details. We state, in particular, the Sobolev embeddings for broken polynomial spaces in the Hilbertian case and the discrete counterpart of the Rellich–Kondrachov theorem. To this end, we introduce the following norm on $H^1(\mathcal{T}_h)$:

$$\|v\|^2 := \|\nabla_h v\|_{[L^2(\Omega)]^d}^2 + |v|_J^2, \quad |v|_J^2 := \sum_{F \in \mathcal{F}_h} \frac{1}{h_F} \|\llbracket v \rrbracket\|_{L^2(F)}^2, \quad (18)$$

where ∇_h denotes the broken gradient on \mathcal{T}_h , *i.e.*, for all $v \in H^1(\mathcal{T}_h)$, $\nabla_h v|_T = \nabla(v|_T)$ for all $T \in \mathcal{T}_h$.

Theorem 14 (Discrete Sobolev embeddings, Hilbertian case). *For all q such that (i) $1 \leq q < +\infty$ if $d \leq 2$, (ii) $1 \leq q \leq \frac{2d}{d-2}$ if $d > 2$, there is σ_q independent of h such that*

$$\forall v_h \in \mathbb{P}_d^k(\mathcal{T}_h), \quad \|v_h\|_{L^q(\Omega)} \leq \sigma_q \|v_h\|. \quad (19)$$

The constant σ_q additionally depends on k , $|\Omega|_d$ and on the mesh regularity parameters.

The discrete Poincaré inequality is obtained as a special case for $q = 2$. For a proof in the more general non-Hilbertian case we refer to [22]. Sequences in

$$V_{\mathcal{H}}^{\text{ccg}} := (V_h^{\text{ccg}})_{h \in \mathcal{H}}$$

uniformly bounded in the $\|\cdot\|$ -norm possess an important compactness property which we discuss in what follows. Following the idea of Brezzi, Manzini, Marini, Pietra, and Russo [13] modified according to [5, §3.1], we introduce for all $F \in \mathcal{F}_h$ the local lifting operator $\mathbf{r}_{\omega,F} : L^2(F) \rightarrow [\mathbb{P}_d^0(\mathcal{T}_h)]^d$ which maps every $\varphi \in L^2(F)$ onto $\mathbf{r}_{\omega,F}(\varphi) \in [\mathbb{P}_d^0(\mathcal{T}_h)]^d$ solution to:

$$\int_{\Omega} \mathbf{r}_{\omega,F}(\varphi) \cdot \boldsymbol{\tau}_h = \int_F \varphi \{\boldsymbol{\tau}_h\}_{\omega} \cdot \mathbf{n}_F, \quad \forall \boldsymbol{\tau}_h \in [\mathbb{P}_d^0(\mathcal{T}_h)]^d. \quad (20)$$

An important remark is that, for a given face $F \in \mathcal{F}_h$, the lifting operator $\mathbf{r}_{\omega,F}$ is supported in $\bigcup_{T \in \mathcal{T}_F} T$. For further use we also introduce the global lifting

$$\mathbf{R}_{\omega,h}(\varphi) := \sum_{F \in \mathcal{F}_h} \mathbf{r}_{\omega,F}(\varphi).$$

If $\omega_{T_1,F} = \omega_{T_2,F} = 1/2$ for all $F \in \mathcal{F}_h^i$ with $F \subset \partial T_1 \cap \partial T_2$ we simply write \mathbf{r}_F and \mathbf{R}_h . The lifting operators can be used to define a corrected discrete gradient accounting for the jumps across mesh interfaces and on $\partial\Omega$. More precisely, we introduce the linear operator $\mathbf{G}_{\omega,h} : H^1(\mathcal{T}_h) \rightarrow [L^2(\Omega)]^d$ defined as follows: For all $v \in H^1(\mathcal{T}_h)$,

$$\mathbf{G}_{\omega,h}(v) := \nabla_h v - \mathbf{R}_{\omega,h}(\llbracket v \rrbracket). \quad (21)$$

As before, if $\omega_{T_1,F} = \omega_{T_2,F} = 1/2$ for all $F \in \mathcal{F}_h^i$ with $F \subset \partial T_1 \cap \partial T_2$ we omit the subscript ω and simply write \mathbf{G}_h .

Theorem 15 (Discrete Rellich–Kondrachov). *Let $(v_h)_{h \in \mathcal{H}}$ be a sequence in $(\mathbb{P}_d^k(\mathcal{T}_h))_{h \in \mathcal{H}}$, $k \geq 0$, uniformly bounded in the $\|\cdot\|$ -norm. Then, there exists a function $v \in H_0^1(\Omega)$ such that as $h \rightarrow 0$, up to a subsequence $v_h \rightarrow v$ strongly in $L^2(\Omega)$.*

Proof. See [22, §6]. □

Lemma 16 (Weak asymptotic consistency of $\mathbf{G}_{\omega,h}$ for sequences of discrete functions). *Let $(v_h)_{h \in \mathcal{H}}$ be a sequence in $(\mathbb{P}_d^k(\mathcal{T}_h))_{h \in \mathcal{H}}$, $k \geq 0$, uniformly bounded in the $\|\cdot\|$ -norm. Then, as $h \rightarrow 0$, $\mathbf{G}_{\omega,h}(v_h) \rightharpoonup \nabla v$ weakly in $[L^2(\Omega)]^d$, where $v \in H_0^1$ is the limit provided by Theorem 15.*

Proof. Denote by π_h^1 the L^2 -orthogonal projection onto $[\mathbb{P}_d^1(\mathcal{T}_h)]^d$. To prove the weak convergence of $\mathbf{G}_{\omega,h}(v_h)$ to ∇v , let $\Phi \in [C_0^\infty(\Omega)]^d$, set $\Phi_h := \pi_h^1 \Phi$, and observe that

$$\int_{\Omega} \mathbf{G}_{\omega,h}(v_h) \cdot \Phi = - \int_{\Omega} v_h \nabla \cdot \Phi + \sum_{T \in \mathcal{T}_h} \int_{\partial T} \Phi \cdot \mathbf{n}_T v_h - \sum_{F \in \mathcal{F}_h} \int_{\Omega} \mathbf{r}_{\omega,F}(\llbracket v_h \rrbracket) \cdot \Phi_h = - \int_{\Omega} v_h \nabla \cdot \Phi + \sum_{F \in \mathcal{F}_h} \int_F \llbracket v_h \rrbracket \{\Phi - \Phi_h\}_{\omega} \cdot \mathbf{n}_F,$$

where we have used the definition of the L^2 -orthogonal projection, the fact that $\{\Phi\}_{\omega} = \Phi$ on every $F \in \mathcal{F}_h$, and (20). Denote by \mathfrak{T}_1 and \mathfrak{T}_2 the addends in the right-hand side. Clearly, $\mathfrak{T}_1 \rightarrow \int_{\Omega} v \nabla \cdot \Phi$. For the second term, the Cauchy–Schwarz inequality yields $\mathfrak{T}_2 \leq |v_h|_J \times \left(\sum_{F \in \mathcal{F}_h} h_F \int_F |\{\Phi - \Phi_h\}_{\omega}|^2 \right)^{1/2}$, which tends to zero owing to the approximation properties of the L^2 -orthogonal projection for the smooth function Φ together with the trace inequality (6) and the fact that $|v_h|_J$ is uniformly bounded by assumption. □

It is important to observe that, since $V_h^{\text{ccg}} \subset \mathbb{P}_d^1(\mathcal{T}_h)$, both Theorems 14 and 15 and Lemma 16 hold *a fortiori* for sequences of functions in the ccG spaces $V_{\mathcal{H}}^{\text{ccg}}$.

2. PURE DIFFUSION

2.1. The discrete problem

The space V_h^{ccg} is used in this section to discretize the heterogeneous diffusion problem

$$\begin{aligned} -\nabla \cdot (\kappa \nabla u) &= f \quad \text{in } \Omega, \\ u &= 0 \quad \text{on } \partial\Omega, \end{aligned} \quad (22)$$

with source term $f \in L^2(\Omega)$. The weak form of this problem is the following:

$$\text{Find } u \in V \text{ s.t. } a(u, v) = \int_{\Omega} f v \text{ for all } v \in V, \quad (23)$$

with $V = H_0^1(\Omega)$ and $a(u, v) := \int_{\Omega} \kappa \nabla u \cdot \nabla v$. The functions in V_h^{ccg} are possibly discontinuous across interfaces, and V_h^{ccg} is therefore not V -conforming. In order to devise a suitable discretization, we take inspiration from the work of Arnold [6] on the weak enforcement of potential continuity across interfaces. In particular, we consider the modification proposed by Di Pietro, Ern, and Guermond [25] in the context of degenerate diffusion-advection-reaction problems to attain robustness with respect to the diffusion tensor κ . This requires, in particular, to relate the weights introduced in Definition 1 to the diffusion coefficient on both sides of an interface. The idea of diffusion-dependent weights can be traced back to the work of Burman and Zunino [16] on mortaring techniques for a singularly perturbed diffusion-advection equation. For all $F \in \mathcal{F}_h^i$ such that $F \subset \partial T_1 \cap \partial T_2$, we let

$$\omega_{T_1, F} := \frac{\lambda_{T_2, F}}{\lambda_{T_1, F} + \lambda_{T_2, F}}, \quad \omega_{T_2, F} := \frac{\lambda_{T_1, F}}{\lambda_{T_1, F} + \lambda_{T_2, F}}. \quad (24)$$

The analysis in the spirit of C  a's Lemma requires to extend the discrete bilinear form to a continuous space containing the exact solution. In order to guarantee that boundary terms remain well-defined when doing so, it is useful to introduce a space V_{\dagger} featuring additional local regularity with respect to V .

Definition 17 (Space V_{\dagger}). *We let V_{\dagger} denote the subspace of V such that*

$$V_{\dagger} := V \cap H^2(P_{\Omega}),$$

with $H^2(P_{\Omega})$ spanned by the functions whose restriction to every $S \in P_{\Omega}$ (with P_{Ω} defined in §1.2) is in $H^2(S)$.

Remark 18 (L^2 -regularity of traces). Using classical trace inequalities (see, e.g., Brenner and Scott [10, Chapter 1]) it is inferred that there exists C such that, for all $v \in V_{\dagger}$ and all $T \in \mathcal{T}_h$,

$$\|\nabla v\|_{[L^2(\partial T)]^d} \leq C \|\nabla v\|_{[L^2(T)]^d}^{1/2} \|\nabla v\|_{[H^1(T)]^{d,d}}^{1/2}, \quad (25)$$

that is to say, since $v \in H^2(T)$, the gradient of v has square-integrable trace on ∂T for all $T \in \mathcal{T}_h$. This implies, in particular, that both $\nabla v|_T \cdot \mathbf{n}_T$ and, using (11), $(\kappa^{1/2} \nabla v)|_T \cdot \mathbf{n}_T$ have square-integrable traces on ∂T .

The space which is assumed to contain both the discrete and the continuous solution is defined as

$$V_{\dagger h} := V_h^{\text{ccg}} + V_{\dagger}.$$

The additional regularity assumption $u \in V_{\dagger}$ is made in what follows to simplify the exposition and write integrals instead of duality pairings. For some details on how to relax this assumption we refer to Di Pietro and Ern [24] and references therein. Regularity results for the solution of problem (22) can be found, e.g., in the work of Kellogg [38]; see also Nicaise and S  ndig [40]. We are now ready to define the bilinear form $a_h \in \mathcal{L}(V_{\dagger h} \times V_{\dagger h}, \mathbb{R})$,

$$a_h(v, w) := \int_{\Omega} \kappa \nabla_h v \cdot \nabla_h w - \sum_{F \in \mathcal{F}_h} \int_F \{\kappa \nabla_h v\}_{\omega} \cdot \mathbf{n}_F [w] - \sum_{F \in \mathcal{F}_h} \int_F [v] \{\kappa \nabla_h w\}_{\omega} \cdot \mathbf{n}_F + \sum_{F \in \mathcal{F}_h} \eta \frac{\gamma_F}{h_F} \int_F [v] [w], \quad (26)$$

where $\eta > 0$ denotes a user-dependent penalty parameter while γ_F is such that

$$\gamma_F := \begin{cases} 2 \frac{\lambda_{T_1, F} \lambda_{T_2, F}}{\lambda_{T_1, F} + \lambda_{T_2, F}} & \text{if } F \in \mathcal{F}_h^i, F \subset \partial T_1 \cap \partial T_2, \\ \lambda_{T, F} & \text{if } F \in \mathcal{F}_h^b, F \subset \partial T \cap \partial \Omega. \end{cases} \quad (27)$$

The penalty parameter γ_F , molded after [25], contains the harmonic averaging of the normal diffusion coefficient on both sides of an interface. This, together with the definition of the weights (24), ensures that the correct amount of penalization is added to control the second and third term in the right hand side of (26) when proving

the coercivity of a_h with respect to the natural energy norm defined by (29). As a result, the coercivity constant does not depend on κ ; cf. Lemma 19. The discrete problem reads

$$\text{Find } u_h \in V_h^{\text{ccg}} \text{ s.t. } a_h(u_h, v_h) = \int_{\Omega} f v_h \text{ for all } v_h \in V_h^{\text{ccg}}. \quad (28)$$

2.2. Basic error estimate

We introduce the following data dependent norms on $V_{\dagger h}$:

$$\|v\|_{\kappa}^2 := \|\kappa^{1/2} \nabla_h v\|_{[L^2(\Omega)]^d}^2 + |v|_{J, \kappa}^2, \quad \|v\|_{\kappa, \dagger}^2 := \|v\|_{\kappa}^2 + \sum_{T \in \mathcal{T}_h} h_T \|\kappa^{1/2} \nabla v \cdot \mathbf{n}_T\|_{L^2(\partial T)}^2, \quad (29)$$

where the jump seminorm is given by

$$|v|_{J, \kappa}^2 := \sum_{F \in \mathcal{F}_h} \frac{\gamma_F}{h_F} \|\llbracket v \rrbracket\|_{L^2(F)}^2.$$

Observe that the seminorm $|\cdot|_J$ only depends on the diffusion coefficient κ via the stabilization parameter γ_F defined by (27). The following lemma contains some important properties of the bilinear form a_h , namely consistency, coercivity and boundedness. We emphasize, in particular, the role of the choices (24) and (27) in delivering coercivity and boundedness constant that are independent of the diffusion coefficient κ . This is a key property to obtain a robust error estimate in the energy norm.

Lemma 19 (Properties of the bilinear form a_h). *The bilinear form a_h enjoys the following properties:*

(i) Consistency. Assume $u \in V_{\dagger}$. Then, for all $v_h \in V_h^{\text{ccg}}$,

$$a_h(u, v_h) = \int_{\Omega} f v_h;$$

(ii) Coercivity. For all $\eta > \underline{\eta} = C_{\text{tr}}^2 N_{\hat{\sigma}}$ there holds

$$\forall v_h \in V_h^{\text{ccg}}, \quad a_h(v_h, v_h) \geq C_{\text{sta}} \|v_h\|_{\kappa}^2,$$

with $C_{\text{sta}} := (\eta - C_{\text{tr}}^2 N_{\hat{\sigma}}) \{\max(1/2, \eta + C_{\text{tr}}^2 N_{\hat{\sigma}})\}^{-1}$ independent of both κ and h ;

(iii) Boundedness. There is C_{bnd} independent of the meshsize h and of the diffusion coefficient κ such that

$$\forall (v, w_h) \in V_{\dagger h} \times V_h^{\text{ccg}}, \quad a_h(v, w_h) \leq C_{\text{bnd}} \|v\|_{\kappa, \dagger} \|w_h\|_{\kappa}.$$

Proof. We preliminarily note the following bound resulting from the Cauchy–Schwarz inequality:

$$\forall (v, w_h) \in V_{\dagger h} \times V_h^{\text{ccg}}, \quad \left| \sum_{F \in \mathcal{F}_h} \int_F \{\kappa \nabla_h v\}_{\omega} \cdot \mathbf{n}_F \llbracket w_h \rrbracket \right| \leq \left(\sum_{T \in \mathcal{T}_h} \sum_{F \in \mathcal{F}_T} h_F \|\kappa^{1/2} \nabla v\|_{|T} \cdot \mathbf{n}_F\|_{L^2(F)}^2 \right)^{1/2} |w_h|_{J, \kappa}. \quad (30)$$

Consistency. Plugging the exact solution u into the first argument of a_h and integrating by parts we obtain, for all $v_h \in V_h^{\text{ccg}}$,

$$a_h(u, v_h) = - \int_{\Omega} \nabla \cdot (\kappa \nabla u) v_h + \sum_{F \in \mathcal{F}_h} \int_F \llbracket \kappa \nabla_h u \rrbracket \cdot \mathbf{n}_F \{v_h\}_{\bar{\omega}} - \sum_{F \in \mathcal{F}_h} \int_F \llbracket u \rrbracket \{\kappa \nabla_h v_h\}_{\omega} \cdot \mathbf{n}_F + \sum_{F \in \mathcal{F}_h} \eta \frac{\gamma_F}{h_F} \int_F \llbracket u \rrbracket \llbracket v_h \rrbracket,$$

where $\{v_h\}_{\bar{\omega}} := \omega_{T_2, F} v_h|_{T_1} + \omega_{T_1, F} v_h|_{T_2}$. The conclusion follows using the fact that $-\nabla \cdot (\kappa \nabla u) = f$ for a.e. $x \in \Omega$, $\llbracket u \rrbracket = 0$ for all $F \in \mathcal{F}_h$ and $\llbracket \kappa \nabla u \rrbracket \cdot \mathbf{n}_F = 0$ for all $F \in \mathcal{F}_h^i$.

Coercivity. It is inferred from the bound (30) together with the discrete trace inequality (5) that

$$\forall v_h \in V_h^{\text{ccg}}, \quad \left| \sum_{F \in \mathcal{F}_h} \int_F \{ \kappa \nabla_h v_h \}_{\omega} \cdot \mathbf{n}_F \llbracket v_h \rrbracket \right| \leq C_{\text{tr}} N_{\epsilon}^{1/2} \|\kappa^{1/2} \nabla_h v_h\|_{[L^2(\Omega)]^d} |v_h|_{J, \kappa}.$$

Using the inequality $2ab \leq \epsilon a^2 + 1/\epsilon b^2$ valid for any $\epsilon > 0$ together with the above bound, we obtain

$$\begin{aligned} a_h(v_h, v_h) &= \|\kappa^{1/2} \nabla_h v_h\|_{[L^2(\Omega)]^d}^2 - 2 \sum_{F \in \mathcal{F}_h} \int_F \{ \kappa \nabla_h v_h \}_{\omega} \cdot \mathbf{n}_F \llbracket v_h \rrbracket + \eta |v_h|_{J, \kappa}^2 \\ &\geq (1 - C_{\text{tr}}^2 N_{\epsilon} \epsilon) \|\kappa^{1/2} \nabla_h v_h\|_{[L^2(\Omega)]^d}^2 + (\eta - 1/\epsilon) |v_h|_{J, \kappa}^2. \end{aligned}$$

The desired result follows by properly selecting ϵ .

Boundedness. Let $(v, w_h) \in V_{\dagger h} \times V_h^{\text{ccg}}$ and let $\mathfrak{T}_1, \dots, \mathfrak{T}_4$ denote the addends in the expression of $a_h(v, w_h)$ obtained from (26). Using the Cauchy–Schwarz inequality it is readily inferred that $|\mathfrak{T}_1 + \mathfrak{T}_4| \leq (1 + \eta) \|v\|_{\kappa} \|w_h\|_{\kappa}$. Moreover, owing to the bound (30), $|\mathfrak{T}_2| \leq \|v\|_{\kappa, \dagger} |w_h|_{J, \kappa} \leq \|v\|_{\kappa, \dagger} \|w_h\|_{\kappa}$. Finally, $|\mathfrak{T}_3| \leq C_{\text{tr}} N_{\epsilon}^{1/2} |v|_{J, \kappa} \|\kappa^{1/2} \nabla_h w_h\|_{[L^2(\Omega)]^d}$, and the conclusion follows. \square

The following result classically follows from Lemma 19.

Theorem 20 ($\|\cdot\|_{\kappa}$ -error estimate). *Let $u \in H_0^1(\Omega)$ solve (22) and assume $u \in V_{\dagger}$. Let, moreover, $(u_h)_{h \in \mathcal{H}}$ denote the sequence of discrete solution to problem (28) on the admissible mesh sequence $\mathcal{T}_{\mathcal{H}}$. Then,*

$$\|u - u_h\|_{\kappa} \leq \left(1 + \frac{C_{\text{bnd}}}{C_{\text{sta}}}\right) \inf_{v_h \in V_h^{\text{ccg}}} \|u - v_h\|_{\kappa, \dagger}.$$

An important remark is that the error estimate in Theorem 20 is robust in that the multiplicative constant in the right-hand side does not depend on κ . To infer a convergence rate from Theorem 20 we have to study the approximation properties of the discrete space V_h^{ccg} and further bound $\inf_{v_h \in V_h^{\text{ccg}}} \|u - v_h\|_{\kappa, \dagger}$.

2.3. Convergence rate

2.3.1. The heterogeneous case

We first consider the heterogeneous case and focus on exact solutions exhibiting further local regularity. For $k \geq 0$ define the spaces of piecewise regular functions

$$C^k(\mathcal{T}_h) := \{v \in L^2(\Omega) \mid v|_T \in C^k(\bar{T}), \forall T \in \mathcal{T}_h\}, \quad (31)$$

classically equipped with the norm

$$\|v\|_{C^k(\mathcal{T}_h)} := \max_{T \in \mathcal{T}_h} \max_{0 \leq l \leq k, 1 \leq i \leq d} \|\partial_i^l v\|_{C^0(\bar{T})},$$

and $\|w\|_{C^0(\bar{T})} := \max_{x \in \bar{T}} |w(x)|$ for all $w \in C^0(\bar{T})$. A proof of the following result is given in [4, Appendix A].

Theorem 21 (Space $\mathcal{Q}_{P_{\Omega}, \kappa}$). *Let $\mathcal{Q}_{P_{\Omega}, \kappa}$ be the space of functions $\varphi : \bar{\Omega} \rightarrow \mathbb{R}$ enjoying the following properties:*

- (i) Global and local regularity. *The function φ belongs to $C_0(\bar{\Omega}) \cap C^2(P_{\Omega})$ with $C^2(P_{\Omega})$ spanned by the functions that are $C^2(\bar{S})$ for all $S \in P_{\Omega}$;*

- (ii) Continuity of the tangential derivatives at interfaces. *For all $S_1, S_2 \in P_\Omega$ with intersection $\varsigma := \partial S_1 \cap \partial S_2$ such that $|\varsigma|_{d-1} > 0$ and all vector \mathbf{t} parallel to ς ,*

$$\nabla \varphi|_{S_1} \cdot \mathbf{t} = \nabla \varphi|_{S_2} \cdot \mathbf{t} \quad \text{on } \varsigma;$$

- (iii) Continuity of the diffusive flux at interfaces. *For all $S_1, S_2 \in P_\Omega$ with intersection $\varsigma := \partial S_1 \cap \partial S_2$ such that $|\varsigma|_{d-1} > 0$,*

$$(\boldsymbol{\kappa} \nabla \varphi)|_{S_1} \cdot \mathbf{n}_\varsigma = (\boldsymbol{\kappa} \nabla \varphi)|_{S_2} \cdot \mathbf{n}_\varsigma, \quad \text{on } \varsigma,$$

where \mathbf{n}_ς is the outer normal to S_1 .

Then, $\mathcal{Q}_{P_\Omega, \boldsymbol{\kappa}}$ is dense in $H_0^1(\Omega)$.

An important remark is that $\mathcal{Q}_{P_\Omega, \boldsymbol{\kappa}}$ is a subspace of V_\dagger , and so the assumptions required to prove the error estimate in Theorem 20 are met by solutions that are in $\mathcal{Q}_{P_\Omega, \boldsymbol{\kappa}}$. Moreover, it is clear from Assumption 9 that $\mathcal{Q}_{P_\Omega, \boldsymbol{\kappa}} \subset C^2(\mathcal{T}_h)$. In what follows we denote by $\mathcal{I}_h^{\text{ccg}} : C^0(\mathcal{T}_h) \rightarrow \mathbb{V}_h$ the interpolator at cell centers which maps every function $v \in C^0(\mathcal{T}_h)$ onto the vector

$$\mathcal{I}_h^{\text{ccg}}(v) = (v(\mathbf{x}_T))_{T \in \mathcal{T}_h} \in \mathbb{V}_h.$$

The following result is an immediate consequence of [4, Lemma 3.3] together with the shape- and contact-regularity of the mesh family \mathcal{T}_h .

Lemma 22 (Consistency of group gradients). *For all $h \in \mathcal{H}$, all $v \in \mathcal{Q}_{P_\Omega, \boldsymbol{\kappa}}$, and all $F \in \mathcal{F}_h$,*

$$|\nabla \xi_{\mathbf{v}_h}^{\mathbf{g}_F} - \nabla v(\mathbf{x}_{T_{\mathbf{g}_F}})| \leq C (1 + \|\mathbf{A}_{\mathbf{g}_F}^{-1}\|_2) h_{T_{\mathbf{g}_F}},$$

where $\mathbf{v}_h = \mathcal{I}_h^{\text{ccg}}(v)$ and C depends on $\boldsymbol{\kappa}$, on the mesh regularity parameters, and on $\|v\|_{C^2(\mathcal{T}_h)}$ but not on h .

In view of Lemma 22, we need to ensure first-order convergence of the group gradients, which requires the following assumption.

Assumption 23 (Uniform bound on $\|\mathbf{A}_{\mathbf{g}_F}^{-1}\|_2$). *We assume that there exists $\Lambda < +\infty$ independent of the meshsize h uniformly bounding the set $\{\|\mathbf{A}_{\mathbf{g}_F}^{-1}\|_2\}_{h \in \mathcal{H}, F \in \mathcal{F}_h^i}$ from above.*

For further use we introduce the following augmented version of the $\|\cdot\|$ -norm on V_\dagger :

$$\|v\|_\dagger^2 := \|v\|^2 + \sum_{T \in \mathcal{T}_h} h_T \|\nabla v|_T \cdot \mathbf{n}_T\|_{L^2(\partial T)}^2. \quad (32)$$

The proof of the following result, which is instrumental in estimating the convergence rate, is given in §A.1.

Theorem 24 (Approximation of functions in $\mathcal{Q}_{P_\Omega, \boldsymbol{\kappa}}$). *Let $v \in \mathcal{Q}_{P_\Omega, \boldsymbol{\kappa}}$ and set $v_h := (\mathfrak{R}_h^{\text{ccg}} \circ \mathcal{I}_h^{\text{ccg}})(v) \in V_h^{\text{ccg}}$. Then, under Assumption 23 there holds*

$$\|v - v_h\|_{\boldsymbol{\kappa}, \dagger} \leq \bar{\lambda}^{-1/2} \|v - v_h\|_\dagger \leq C_v h, \quad (33)$$

with C_v depending on $\boldsymbol{\kappa}$, on the mesh regularity parameters, on Λ , and on $\|v\|_{C^2(\mathcal{T}_h)}$ but independent of the meshsize h .

Corollary 25 (Convergence rate, heterogeneous case). *Assume $u \in \mathcal{Q}_{P_\Omega, \boldsymbol{\kappa}}$. Then, under Assumption 23, there holds*

$$\|u - u_h\|_{\boldsymbol{\kappa}} \leq Ch$$

with $C = C_u \bar{\lambda}^{-1/2} \left(1 + \frac{C_{\text{bnd}}}{C_{\text{sta}}}\right)$ and C_u results from Theorem 24. C additionally depends on the mesh regularity parameters but is independent of the meshsize h .

2.3.2. The homogeneous isotropic case

Whenever the diffusion coefficient is homogeneous and isotropic, the above results can be further refined. We assume throughout this section that

$$\boldsymbol{\kappa} = \mathbf{1}_d, \quad d \in \{2, 3\}. \quad (34)$$

The more general case $\boldsymbol{\kappa} = \nu \mathbf{1}_d$, $\nu > 0$, can be handled with minor modifications. When (34) holds, convergence rates can be estimated with milder regularity assumptions on the exact solution, and L^2 -error estimates for the method (28) can be obtained by the Aubin–Nietsche trick [8, 41]. The key point is here to show how optimal convergence rates can be obtained avoiding pointwise estimations, thereby removing the need for the strong local regularity assumption $u \in C^2(\mathcal{T}_h)$ used all along the previous section. To this end, we need to introduce further mild assumptions on the mesh family. For all faces we define a patch of pyramids on which the piecewise affine functions $\{\xi_{\mathbf{v}_h}^{\mathbf{g}_F}\}_{F \in \mathcal{F}_h}$ are required to exhibit approximation properties. More precisely, for all $F \in \mathcal{F}_h$ let

$$\mathcal{P}_F := \begin{cases} \mathcal{P}_{\mathbf{g}_F} & \text{if } F \in \mathcal{F}_h^i, \\ \mathcal{P}_{T,F} & \text{if } F \subset \partial T \cap \partial \Omega, \end{cases}$$

with $\mathcal{P}_{\mathbf{g}_F}$ defined by (12); see Figure 1.

Assumption 26 (Approximation property for L-constructions). *We assume that the L-constructions are such that there exists C independent of the meshsize h such that, for all $F \in \mathcal{F}_h$ and all $v \in H^2(\Omega) \cap H_0^1(\Omega)$,*

$$\|v - \xi_{\mathbf{v}_h}^{\mathbf{g}_F}\|_{L^2(\mathcal{P}_F)} \leq Ch_{\mathcal{P}_F}^2 |v|_{H^2(\mathcal{P}_F)}, \quad |v - \xi_{\mathbf{v}_h}^{\mathbf{g}_F}|_{H^1(\mathcal{P}_F)} \leq Ch_{\mathcal{P}_F} |v|_{H^2(\mathcal{P}_F)},$$

with $\mathbf{v}_h = \mathcal{I}_h^{\text{ccg}}(v)$. Moreover, for all $F \in \mathcal{F}_h$ and all $T \in \mathcal{T}_F$, $h_{\mathcal{P}_F}$ is bounded by h_T uniformly with respect to h .

Some comments are of order. We start by observing that Assumption 11 has a straightforward interpretation in the homogeneous case, as it amounts to requiring that, for all $F \in \mathcal{F}_h^i$, there exists at least a group $\mathbf{g} \in \mathcal{G}_F$ such that the cell centers of the elements in $\mathcal{T}_{\mathbf{g}}$ and the barycenters of the faces $F \in \mathbf{g}^b$ form a non-degenerate simplex $S_{\mathbf{g}}$; see Figure 1. Assumption 23 is then essentially a shape-regularity requirement on the family of simplices $\{S_{\mathbf{g}_F}\}_{h \in \mathcal{H}, F \in \mathcal{F}_h^i}$. A second important remark is that, for any function v regular enough, the function $\xi_{\mathbf{v}_h}^{\mathbf{g}}$ with $\mathbf{v}_h = \mathcal{I}_h^{\text{ccg}}(v)$ coincides with the Lagrange interpolator on $S_{\mathbf{g}}$ (a sufficient regularity is $v \in H^2(\Omega)$ for $d \in \{2, 3\}$; see, e.g., [30, Example 1.106]). In this respect, Assumption 26 can be regarded as a strengthening of Assumption 23. Indeed, Assumption 26 can be proven using classical FE techniques in some cases provided sufficient (geometric) regularity holds. A simple example is provided by Cartesian orthogonal grids with nonconforming local refinement and bounded difference in refinement level between neighbouring elements. As a matter of fact, in this case we have a finite number of reference configurations onto which the patches used in the L-construction can be mapped via an affine bijective mapping, and one can classically proceed using the Deny–Lions Lemma. We also emphasize that Assumption 26 does not necessarily follow from the approximation properties of the mesh sequence $\mathcal{T}_{\mathcal{H}}$, since the reconstruction is grounded on the patches \mathcal{P}_F , $F \in \mathcal{F}_h$, and not on the elements of \mathcal{T}_h . The proof of the following technical result is postponed to §A.2.

Theorem 27 (Approximation of functions in $V \cap H^2(\Omega)$). *Under Assumption 26, there holds*

$$\forall v \in V \cap H^2(\Omega), \quad \|v - v_h\|_{\dagger} \leq Ch \|v\|_{H^2(\Omega)},$$

with $v_h := (\mathfrak{R}_h^{\text{ccg}} \circ \mathcal{I}_h^{\text{ccg}})(v) \in V_h^{\text{ccg}}$ and C depending on the mesh regularity parameters but not on h .

Definition 28 (Elliptic regularity). *We say that elliptic regularity holds true if there is C_{ell} , depending only on the domain Ω , such that, for all $\psi \in L^2(\Omega)$, the solution to the following problem:*

$$\text{Find } \chi \in H_0^1(\Omega) \text{ s.t. } a(\chi, v) = \int_{\Omega} \psi v \text{ for all } v \in H_0^1(\Omega), \quad (35)$$

with $a(w, v) := \int_{\Omega} wv$ satisfies $\|\chi\|_{H^2(\Omega)} \leq C_{\text{ell}} \|\psi\|_{L^2(\Omega)}$.

Elliptic regularity can be asserted if, for instance, the polygonal domain Ω is convex; see Grisvard [35].

Lemma 29 (Convergence rate, homogeneous case). *Let $u \in V$ be the unique solution to (22) and assume elliptic regularity. Then, under Assumption 26, there exists C independent of the meshsize h such that*

$$\|u - u_h\| \leq Ch \|u\|_{H^2(\Omega)}, \quad (36)$$

$$\|u - u_h\|_{L^2(\Omega)} \leq Ch^2 \|u\|_{H^2(\Omega)}. \quad (37)$$

Proof. (i) *Energy-norm estimate* (36). Use the error estimate of Theorem 20 together with Theorem 27 and the fact that the $\|\cdot\|_{\kappa}$ - and $\|\cdot\|_{\kappa, \dagger}$ -norms coincide with the $\|\cdot\|$ - and $\|\cdot\|_{\dagger}$ -norms respectively under assumption (34) to conclude that $\|u - u_h\| \leq C \left(1 + \frac{C_{\text{bnd}}}{C_{\text{sta}}}\right) \|v\|_{H^2(\Omega)}$.

(ii) *L^2 -error estimate* (37). We only give a sketch of the proof and refer, e.g., to [7] or [23, Chapter 4] for further details. A preliminary step consists in estimating the error in the augmented norm $\|\cdot\|_{\dagger}$. To this end, remark that the bilinear form a_h is coercive in $V_h^{\text{ccg}} \times V_h^{\text{ccg}}$ with respect to the augmented norm $\|\cdot\|_{\dagger}$, i.e., there exists C'_{sta} such that, for all $\eta > \underline{\eta}$ and all $v_h \in V_h^{\text{ccg}}$, $a_h(v_h, v_h) \geq C'_{\text{sta}} \|v_h\|_{\dagger}^2$ (indeed, the $\|\cdot\|$ -norm and the $\|\cdot\|_{\dagger}$ -norm are uniformly equivalent on V_h^{ccg}). Also, there exists C'_{bnd} independent of the meshsize h such that, for all $w, v \in V_{\dagger h}$, $a_h(w, v) \leq C'_{\text{bnd}} \|w\|_{\dagger} \|v\|_{\dagger}$. Hence, proceeding as in Theorem 20 and using Theorem 27 we conclude that $\|u - u_h\|_{\dagger} \leq Ch \|u\|_{H^2(\Omega)}$ with C independent of the meshsize h . Consider now the auxiliary problem (35) with $\psi = u - u_h$. By the elliptic regularity assumption, there exists C_{ell} such that $\|\chi\|_{H^2(\Omega)} \leq C_{\text{ell}} \|u - u_h\|_{L^2(\Omega)}$. Moreover, owing to the symmetry and the consistency of a_h , $a_h(u - u_h, \chi) = -\int_{\Omega} \Delta \chi (u - u_h)$ and, for $\chi_h = (\mathfrak{R}_h^{\text{ccg}} \circ \mathcal{I}_h^{\text{ccg}})(\chi) \in V_h^{\text{ccg}}$, $a_h(u - u_h, \chi_h) = 0$. As a result,

$$\|u - u_h\|_{L^2(\Omega)}^2 = a_h(u - u_h, \chi - \chi_h) \lesssim \|u - u_h\|_{\dagger} \|\chi - \chi_h\|_{\dagger} \lesssim \|u - u_h\|_{\dagger} h \|\chi\|_{H^2(\mathcal{T}_h)} \lesssim \|u - u_h\|_{\dagger} h \|u - u_h\|_{L^2(\Omega)},$$

with \lesssim indicating inequalities up to a multiplicative constant independent of the meshsize h . To conclude the proof, use the fact that $\|u - u_h\|_{\dagger} \leq Ch \|v\|_{H^2(\Omega)}$. \square

2.4. Convergence to minimal regularity solutions

We investigate the convergence of the method (28) to minimal regularity solutions, i.e., solutions that barely sit in $H_0^1(\Omega)$. Throughout this section we restore the original assumptions on the diffusion coefficient κ , and we consider an arbitrary space dimension, i.e.

$$\kappa \in [\mathbb{P}_d^0(\mathcal{T}_h)]^{d,d}, \quad d \geq 2.$$

The one-dimensional case can also be covered provided we adjust the definition of face diameters. The analysis follows the ideas of Eymard, Gallouët, and Herbin [32, 33] originally developed in the context of FV methods and recently transposed to dG methods by Di Pietro and Ern [22]. An important remark is that the bilinear form a_h admits the following equivalent form on $V_h^{\text{ccg}} \times V_h^{\text{ccg}}$:

$$a_h(u_h, v_h) = \int_{\Omega} \kappa \mathbf{G}_{\omega, h}(u_h) \cdot \mathbf{G}_{\omega, h}(v_h) + j_h(u_h, v_h), \quad (38)$$

with $j_h(u_h, v_h) := -\int_{\Omega} \kappa \mathbf{R}_{\omega, h}(\llbracket u_h \rrbracket) \cdot \mathbf{R}_{\omega, h}(\llbracket v_h \rrbracket) + \sum_{F \in \mathcal{F}_h} \eta \gamma_F h_F^{-1} \int_F \llbracket u_h \rrbracket \llbracket v_h \rrbracket$ and discrete gradients defined by (21). When extended to $V_{\dagger h} \times V_h^{\text{ccg}}$, this alternative form is no longer consistent in the sense of point (i) in Lemma 19; see [22, Remark 3.3]. However, a_h retains a different form of consistency which suffices to infer the convergence of the method when u only exhibits the minimal regularity.

Definition 30 (Asymptotic consistency). *We say that the bilinear form a_h is asymptotically consistent with the exact bilinear form a on $V_{\mathcal{H}}^{\text{ccg}}$ if, for any sequence $(v_h)_{h \in \mathcal{H}}$ in $V_{\mathcal{H}}^{\text{ccg}}$ uniformly bounded in the $\|\cdot\|$ -norm, and*

for all $\varphi \in \mathcal{Q}_{P\Omega, \kappa}$ with $\varphi_h := (\mathfrak{R}_h^{\text{ccg}} \circ \mathcal{I}_h^{\text{ccg}})(\varphi) \in V_h^{\text{ccg}}$,

$$\lim_{h \rightarrow 0} a_h(v_h, \varphi_h) = a(v, \varphi) = \int_{\Omega} \kappa \nabla v \cdot \nabla \varphi,$$

and $v \in H_0^1(\Omega)$ results from Theorem 15.

To prove the convergence of the method, we then proceed as follows: (i) using the coercivity of a_h we prove a uniform bound for the $\|\cdot\|$ -norm of the discrete solutions $(u_h)_{h \in \mathcal{H}}$; (ii) by virtue of Theorem 15, we infer the existence of $\bar{u} \in V = H_0^1(\Omega)$ limit of $(u_h)_{h \in \mathcal{H}}$; (iii) using the asymptotic consistency of a_h together with the fact that $\mathcal{Q}_{P\Omega, \kappa}$ is dense in V , we conclude that $\bar{u} = u$ with u solution to (22) (and, by the uniqueness of u , that the convergence property extends to the whole sequence); (iv) using the above result, we prove the strong convergence of the sequence $(\mathbf{G}_{\omega, h}(u_h))_{h \in \mathcal{H}}$ to ∇u in $[L^2(\Omega)]^d$ as $h \rightarrow 0$. An important intermediate result to prove the asymptotic consistency of a_h is the consistency of the discrete gradient $\mathbf{G}_{\omega, h}$ defined by (21) for the interpolates of functions in $\mathcal{Q}_{P\Omega, \kappa}$. We first prove the following.

Lemma 31 (Bound on global lifting). *For all $v \in V_{\dagger}$, there holds*

$$\|\kappa^{1/2} \mathbf{R}_{\omega, h}(\llbracket v \rrbracket)\|_{[L^2(\Omega)]^d} \leq C_{\text{tr}} N_{\mathcal{C}}^{1/2} |v|_{\mathbf{J}, \kappa}.$$

Proof. By definition,

$$\|\kappa^{1/2} \mathbf{R}_{\omega, h}(\llbracket v \rrbracket)\|_{[L^2(\Omega)]^d}^2 = \sum_{F \in \mathcal{F}_h} \int_{\Omega} \kappa \mathbf{R}_{\omega, h}(\llbracket v \rrbracket) \cdot \mathbf{r}_{\omega, F}(\llbracket v \rrbracket) = \sum_{F \in \mathcal{F}_h} \int_F \{\kappa \mathbf{R}_{\omega, h}(\llbracket v_h \rrbracket)\}_{\omega} \cdot \mathbf{n}_F \llbracket v \rrbracket.$$

For brevity of notation, for all $F \in \mathcal{F}_h^i$ with $F = \partial T_1 \cap \partial T_2$, let $\omega_i = \omega_{T_i, F}$, $\lambda_{T_i, F} = \lambda_i$, $\kappa_i = \kappa|_{T_i}$, and $\mathbf{a}_i = \kappa_i^{1/2} \mathbf{R}_{\omega, h}(\llbracket v \rrbracket)|_{T_i}$, $i \in \{1, 2\}$. The Cauchy–Schwarz inequality yields

$$\begin{aligned} \int_F \{\kappa \mathbf{R}_{\omega, h}(\llbracket v \rrbracket)\}_{\omega} \cdot \mathbf{n}_F \llbracket v \rrbracket &= \int_F (\omega_1 \kappa_1^{1/2} \mathbf{n}_{T_1} \cdot \mathbf{a}_1 + \omega_2 \kappa_2^{1/2} \mathbf{n}_{T_2} \cdot \mathbf{a}_2) \llbracket v \rrbracket \\ &\leq \left\{ \frac{1}{2} h_F \left(\|\mathbf{a}_1\|_{[L^2(F)]^d}^2 + \|\mathbf{a}_2\|_{[L^2(F)]^d}^2 \right) \right\}^{1/2} \times \left\{ 2(\omega_1^2 \lambda_1 + \omega_2^2 \lambda_2) \frac{1}{h_F} \|\llbracket v \rrbracket\|_{L^2(F)}^2 \right\}^{1/2}, \end{aligned}$$

and since $2(\omega_1^2 \lambda_1 + \omega_2^2 \lambda_2) = \gamma_F$, it is inferred that

$$\int_F \{\kappa \mathbf{R}_{\omega, h}(\llbracket v \rrbracket)\}_{\omega} \cdot \mathbf{n}_F \llbracket v \rrbracket \leq \left\{ \frac{1}{2} h_F \left(\|\mathbf{a}_1\|_{[L^2(F)]^d}^2 + \|\mathbf{a}_2\|_{[L^2(F)]^d}^2 \right) \right\}^{1/2} \times \left\{ \frac{\gamma_F}{h_F} \|\llbracket v \rrbracket\|_{L^2(F)}^2 \right\}^{1/2}.$$

Moreover, for all $F \in \mathcal{F}_h^b$ with $F = \partial T \cap \partial \Omega$,

$$\int_F \{\kappa \mathbf{R}_{\omega, h}(\llbracket v \rrbracket)\}_{\omega} \cdot \mathbf{n}_F \llbracket v \rrbracket \leq h_F^{1/2} \|(\kappa^{1/2} \mathbf{R}_{\omega, h}(\llbracket v \rrbracket))|_T \cdot \mathbf{n}_F\|_{L^2(F)} \times \left\{ \frac{\gamma_F}{h_F} \|\llbracket v \rrbracket\|_{L^2(F)}^2 \right\}^{1/2}.$$

Summing over mesh faces, and using the Cauchy–Schwarz and discrete trace inequality (5) we obtain

$$\|\kappa^{1/2} \mathbf{R}_{\omega, h}(\llbracket v \rrbracket)\|_{[L^2(\Omega)]^d}^2 \leq \sum_{F \in \mathcal{F}_h} \left\{ h_F \sum_{T \in \mathcal{T}_F} \|(\kappa^{1/2} \mathbf{R}_{\omega, h}(\llbracket v \rrbracket))|_T\|_{L^2(F)}^2 \right\}^{1/2} |v|_{\mathbf{J}, \kappa} \leq C_{\text{tr}} N_{\mathcal{C}}^{1/2} \|\kappa^{1/2} \mathbf{R}_{\omega, h}(\llbracket v \rrbracket)\|_{[L^2(\Omega)]^d} |v|_{\mathbf{J}, \kappa}.$$

This concludes the proof. \square

Lemma 32 (Strong convergence of $\mathbf{G}_{\omega,h}$ for smooth functions). *Let $\varphi \in \mathcal{Q}_{P\Omega,\kappa}$ and set $\varphi_h := (\mathfrak{R}_h^{\text{ccg}} \circ \mathcal{I}_h^{\text{ccg}})(\varphi) \in V_h^{\text{ccg}}$. Under Assumption 23, there holds*

$$\mathbf{G}_{\omega,h}(\varphi_h) \rightarrow \nabla \varphi \quad \text{strongly in } [L^2(\Omega)]^d$$

Proof. The triangular inequality yields

$$\|\mathbf{G}_{\omega,h}(\varphi_h) - \nabla \varphi\|_{[L^2(\Omega)]^d} \leq \|\nabla_h \varphi_h - \nabla \varphi\|_{[L^2(\Omega)]^d} + \|\mathbf{R}_{\omega,h}(\llbracket \varphi_h \rrbracket)\|_{[L^2(\Omega)]^d} := \mathfrak{T}_1 + \mathfrak{T}_2.$$

Using Theorem 24 it is readily inferred that $\mathfrak{T}_1 \rightarrow 0$ as $h \rightarrow 0$. For the second term, use Lemma 31 together with the fact that $\llbracket \varphi \rrbracket_F(\mathbf{x}) = 0$ for all $F \in \mathcal{F}_h$ and all $\mathbf{x} \in F$ to infer

$$\|\kappa^{1/2} \mathbf{R}_{\omega,h}(\llbracket \varphi_h \rrbracket)\|_{[L^2(\Omega)]^d} \leq C_{\text{tr}} N_\partial^{1/2} |\varphi_h|_{J,\kappa} \leq C_{\text{tr}} N_\partial^{1/2} |\varphi_h - \varphi|_{J,\kappa},$$

and the right-hand side tends to zero as $h \rightarrow 0$ again by virtue of Theorem 24. This concludes the proof. \square

We are now ready to prove the following.

Lemma 33 (Asymptotic consistency of the bilinear form a_h). *Under Assumption 23, the bilinear form a_h is asymptotically consistent with the exact bilinear form a on $V_{\mathcal{H}}^{\text{ccg}}$.*

Proof. Let $(v_h)_{h \in \mathcal{H}}$ be a sequence in $V_{\mathcal{H}}^{\text{ccg}}$ bounded in the $\|\cdot\|$ -norm and let $\varphi \in \mathcal{Q}_{P\Omega,\kappa}$. For all $h \in \mathcal{H}$, we set $\varphi_h := (\mathfrak{R}_h^{\text{ccg}} \circ \mathcal{I}_h^{\text{ccg}})(\varphi) \in V_h^{\text{ccg}}$. By Theorem 24, it is clear that $\|\varphi - \varphi_h\|_{\kappa} \rightarrow 0$ as $h \rightarrow 0$. Observe that

$$a_h(v_h, \varphi_h) = \int_{\Omega} \kappa \mathbf{G}_{\omega,h}(v_h) \cdot \mathbf{G}_{\omega,h}(\varphi_h) + j_h(v_h, \varphi_h) := \mathfrak{T}_1 + \mathfrak{T}_2.$$

Clearly, as $h \rightarrow 0$, $\mathfrak{T}_1 \rightarrow \int_{\Omega} \kappa \nabla v \cdot \nabla \varphi$ owing to the weak convergence of $\mathbf{G}_{\omega,h}(v_h)$ to ∇v stated in Lemma 16 and to the strong convergence of $\mathbf{G}_{\omega,h}(\varphi_h)$ to $\nabla \varphi$ proven in Lemma 32. Furthermore, using the Cauchy–Schwarz inequality together with Lemma 31 and the fact that, for all $w \in H^1(\mathcal{T}_h)$, $|w|_{J,\kappa} \leq \bar{\lambda}^{1/2} |w|_J$, it is inferred that

$$|\mathfrak{T}_2| = |j_h(v_h, \varphi_h)| \leq (C_{\text{tr}}^2 N_\partial + \eta) |v_h|_{J,\kappa} |\varphi_h|_{J,\kappa} \leq (C_{\text{tr}}^2 N_\partial + \eta) \bar{\lambda}^{1/2} |v_h|_J |\varphi_h|_{J,\kappa}$$

Since $|v_h|_J$ is bounded by assumption, and since $|\varphi_h|_{J,\kappa} = |\varphi_h - \varphi|_{J,\kappa}$ tends to zero as $h \rightarrow 0$, it is inferred that $\mathfrak{T}_2 \rightarrow 0$. The proof is complete. \square

Remark 34 (Weakening Assumption 23). To prove the asymptotic consistency of a_h , and hence the convergence to minimal regularity solutions, we only need that

$$\forall \varphi \in \mathcal{Q}_{P\Omega,\kappa}, \quad \|\varphi - \varphi_h\| \rightarrow 0 \text{ as } h \rightarrow 0, \quad (39)$$

with $\varphi_h = (\mathfrak{R}_h^{\text{ccg}} \circ \mathcal{I}_h^{\text{ccg}})(\varphi) \in V_h^{\text{ccg}}$. Property (39) holds, e.g., if $\max_{F \in \mathcal{F}_h} \|\mathbf{A}_{\mathbf{g}_F}^{-1}\|_2 \leq Ch^{-\epsilon}$ with $0 \leq \epsilon < 1$ and C independent of the meshsize h . Whenever the solution exhibits sufficient regularity, however, one may wish to have $\epsilon = 0$ to attain optimal convergence rates. For the sake of simplicity, Assumption 23 is required in the statements of Lemma 33 and Theorem 35, although (39) could have been used instead.

Theorem 35 (Convergence to minimal regularity solutions). *Let $(u_h)_{h \in \mathcal{H}}$ be the sequence of approximate solutions generated by solving the discrete problems (28) on the mesh sequence $\mathcal{T}_{\mathcal{H}}$. Then, under Assumption 23, for $\eta > \eta$ with $\bar{\eta}$ defined in Lemma 19ii, as $h \rightarrow 0$, (i) $u_h \rightarrow u$ strongly in $L^2(\Omega)$, (ii) $\nabla_h u_h \rightarrow \nabla u$ strongly in $[L^2(\Omega)]^d$, (iii) $|u_h|_J \rightarrow 0$, with $u \in V$ unique solution to (23).*

Proof. We follow the four steps outlined above.

(i) *A priori estimate.* Owing to Lemma 19ii and to the discrete Poincaré inequality obtained from (19) with $q = 2$,

$$C_{\text{sta}}\lambda \|u_h\|^2 \leq C_{\text{sta}} \|u_h\|_{\kappa}^2 \leq a(u_h, u_h) = \int_{\Omega} f u_h \leq \|f\|_{L^2(\Omega)} \|u_h\|_{L^2(\Omega)} \leq \sigma_2 \|f\|_{L^2(\Omega)} \|u_h\|,$$

hence $\|u_h\| \leq \sigma_2 (C_{\eta}\lambda)^{-1} \|f\|_{L^2(\Omega)}$.

(ii) *Compactness.* Owing to Theorem 15 together with Lemma 16, there exists $\bar{u} \in V = H_0^1(\Omega)$ such that, as $h \rightarrow 0$, up to a subsequence, $u_h \rightarrow \bar{u}$ strongly in $L^2(\Omega)$ and $\mathbf{G}_{\omega,h}(u_h) \rightharpoonup \nabla \bar{u}$ weakly in $[L^2(\Omega)]^d$.

(iii) *Identification of the limit.* Owing to the asymptotic consistency of a_h proven in Lemma 33, for all $\varphi \in \mathcal{Q}_{P_{\Omega},\kappa}$ with $\varphi_h := (\mathfrak{R}_h^{\text{ccg}} \circ \mathcal{I}_h^{\text{ccg}})(\varphi) \in V_h^{\text{ccg}}$,

$$\int_{\Omega} f \varphi \leftarrow \int_{\Omega} f \varphi_h = a_h(u_h, \varphi_h) \rightarrow \int_{\Omega} \kappa \nabla \bar{u} \cdot \nabla \varphi,$$

i.e., \bar{u} solves problem (23) by the density of $\mathcal{Q}_{P_{\Omega},\kappa}$ in V stated in Theorem 21 and, hence, $\bar{u} = u$. Moreover, since the solution u to problem (23) is unique, the whole sequence converges (which is proven by contradiction).

(iv) *Strong convergence of the gradient and of the jumps.* Lemma 31 and (38) yield

$$\forall v_h \in V_h^{\text{ccg}}, \quad a_h(v_h, v_h) \geq \|\kappa^{1/2} \mathbf{G}_{\omega,h}(v_h)\|_{[L^2(\Omega)]^d}^2 + (\eta - C_{\text{tr}}^2 N_{\hat{c}}) |v_h|_{\mathbf{J},\kappa}^2 \quad (40)$$

Moreover, from the weak convergence of $\mathbf{G}_{\omega,h}(u_h)$ to ∇u , we readily infer the weak convergence of $\kappa^{1/2} \mathbf{G}_{\omega,h}(u_h)$ to $\kappa^{1/2} \nabla u$. Owing to (40) and to weak convergence,

$$\liminf_{h \rightarrow 0} a_h(u_h, u_h) \geq \liminf_{h \rightarrow 0} \|\kappa^{1/2} \mathbf{G}_{\omega,h}(u_h)\|_{[L^2(\Omega)]^d}^2 \geq \|\kappa^{1/2} \nabla u\|_{[L^2(\Omega)]^d}^2.$$

Furthermore, still owing to (40),

$$\limsup_{h \rightarrow 0} \|\kappa^{1/2} \mathbf{G}_{\omega,h}(u_h)\|_{[L^2(\Omega)]^d}^2 \leq \limsup_{h \rightarrow 0} a_h(u_h, u_h) = \limsup_{h \rightarrow 0} \int_{\Omega} f u_h = \int_{\Omega} f u = \|\kappa^{1/2} \nabla u\|_{[L^2(\Omega)]^d}^2.$$

This classically proves the strong convergence of $\kappa^{1/2} \mathbf{G}_{\omega,h}(u_h)$ to $\kappa^{1/2} \nabla u$ in $[L^2(\Omega)]^d$ and, hence, the strong convergence of $\mathbf{G}_{\omega,h}(u_h)$ to ∇u in $[L^2(\Omega)]^d$. Note that $a_h(u_h, u_h) \rightarrow \|\kappa^{1/2} \nabla u\|_{[L^2(\Omega)]^d}^2$ also. Owing to (40),

$$(\eta - C_{\text{tr}}^2 N_{\hat{c}}) |u_h|_{\mathbf{J},\kappa}^2 \leq a_h(u_h, u_h) - \|\kappa^{1/2} \mathbf{G}_{\omega,h}(u_h)\|_{[L^2(\Omega)]^d}^2,$$

and, since $\eta > C_{\text{tr}}^2 N_{\hat{c}}$ and the right-hand side tends to zero, $|u_h|_{\mathbf{J},\kappa} \rightarrow 0$. To infer that $|u_h|_{\mathbf{J}} \rightarrow 0$, simply observe that $|u_h|_{\mathbf{J}} \leq \lambda^{-1/2} |u_h|_{\mathbf{J},\kappa}$ and that the right-hand side tends to zero. \square

Remark 36 (Rough forcing terms). A possible way to handle forcing terms f in $H^{-1}(\Omega)$ consists in replacing the test function by an interpolate in $H_0^1(\Omega)$ in the second member. For the sake of simplicity, assume that \mathcal{T}_h is conforming (if this is not the case, \mathfrak{S}_h can be used instead) and let \mathcal{I}_{Os} denote the Oswald interpolator discussed, e.g., by Burman and Ern [15]. It can be proven that there exists C independent of the meshsize h such that, for all $v_h \in V_h^{\text{ccg}}$, $\|\mathcal{I}_{\text{Os}} v_h\|_{H^1(\Omega)} \leq C_{\text{sta},\text{Os}} \|v_h\|$. We consider the following modification of the method (28):

$$\text{Find } u_h \in V_h^{\text{ccg}} \text{ s.t. } a_h(u_h, v_h) = \langle f, \mathcal{I}_{\text{Os}} v_h \rangle_{-1,1}.$$

The *a priori* estimate for the discrete solutions on the admissible mesh family $\mathcal{T}_{\mathcal{H}}$ is obtained as follows:

$$C_{\text{sta}}\lambda \|u_h\|^2 \leq a_h(u_h, u_h) = \langle f, \mathcal{I}_{\text{Os}} u_h \rangle_{-1,1} \leq \|f\|_{H^{-1}(\Omega)} \|\mathcal{I}_{\text{Os}} u_h\|_{H^1(\Omega)} \leq C_{\text{sta},\text{Os}} \|f\|_{H^{-1}(\Omega)} \|u_h\|,$$

hence $\|u_h\| \leq C_{\text{sta},\text{Os}}/C_{\text{sta}} \|f\|_{H^{-1}(\Omega)}$. The argument of Theorem 35 then applies verbatim.

3. STEADY INCOMPRESSIBLE NAVIER-STOKES EQUATIONS

3.1. The continuous setting

In the second part of this work we corroborate the claim that ccG methods are easily extended to problems for which a dG scheme can be devised. Our focus is on the steady incompressible Navier-Stokes (INS) equations for $d \in \{2, 3\}$,

$$\begin{aligned} -\nu \Delta u_i + \partial_j(u_i u_j) + \partial_i p &= f_i \quad \text{in } \Omega, \quad i \in \{1, \dots, d\}, \\ \partial_i u_i &= 0 \quad \text{in } \Omega, \\ u &= 0 \quad \text{on } \partial\Omega, \\ \langle p \rangle_\Omega &= 0, \end{aligned} \tag{41}$$

where the positive real ν denotes the kinematic viscosity and $f \in [L^2(\Omega)]^d$. In (41) and throughout this section Einstein's convention on repeated indices is adopted. The natural spaces for the weak formulation of (41) are

$$U := [H_0^1(\Omega)]^d, \quad P := L_0^2(\Omega), \quad X := U \times P,$$

where we have set $L_0^2(\Omega) := \{v \in L^2(\Omega) \mid \langle v \rangle_\Omega = 0\}$. We define the bilinear forms $a \in \mathcal{L}(U \times U, \mathbb{R})$ and $b \in \mathcal{L}(U \times P, \mathbb{R})$, and the trilinear form $t \in \mathcal{L}(U \times U \times U, \mathbb{R})$ such that

$$a(u, v) := \int_\Omega \nu \nabla u_i \cdot \nabla v_i, \quad b(v, q) := - \int_\Omega q \nabla \cdot v, \quad t(w, u, v) := \int_\Omega (w \cdot \nabla u_i) v_i - \frac{1}{2} \int_\Omega (\nabla \cdot w)(u \cdot v).$$

The trilinear form t includes Temam's device [43] to control the kinetic energy balance as this is needed in what follows for the asymptotic consistency of its discrete counterpart. The weak formulation of system (41) is:

$$\text{Find } (u, p) \in X \text{ s.t. } c((u, p), (v, q)) + t(u, u, v) = \int_\Omega f \cdot v \text{ for all } (v, q) \in X, \tag{42}$$

with bilinear form $c \in \mathcal{L}(X \times X, \mathbb{R})$ such that $c((u, p), (v, q)) = a(u, v) + b(v, p) - b(u, q)$.

3.2. The discrete setting

We seek a discretization of (42) based on the following discrete spaces:

$$U_h := [V_h^{\text{ccg}}]^d, \quad P_h := \mathbb{P}_d^0(\mathcal{T}_h)/\mathbb{R}, \quad X_h := U_h \times P_h.$$

The main difficulties in the approximation of the INS equations lie in the discretization of the velocity-pressure coupling and of the convective term. In our case, the velocity-pressure coupling is stabilized by penalizing the pressure jumps across interfaces with a weight proportional to the meshsize; see, e.g., [19]. As regards the convective term, we use the non-dissipative trilinear form recently proposed by Di Pietro and Ern [22], which has proven suitable to convection-dominated regimes; see also Botti and Di Pietro [9] for the application to a dG discretization of the advection step in the context of a pressure-correction time-integration scheme. Since the convergence analysis is similar as for the dG method of [22], the proofs of the results that hold *a fortiori* are sometimes omitted to leave room to specific issues related to the ccG method.

3.2.1. Velocity-pressure coupling

The velocity-pressure coupling is based on the bilinear form $b_h \in \mathcal{L}(U_h \times P_h, \mathbb{R})$ such that

$$b_h(v_h, q_h) := - \int_\Omega q_h \nabla_h \cdot v_h + \sum_{F \in \mathcal{F}_h} \int_F \llbracket v_h \rrbracket \cdot \mathbf{n}_F \{q_h\} = - \sum_{F \in \mathcal{F}_h^i} \int_F \{v_h\} \cdot \mathbf{n}_F \llbracket q_h \rrbracket. \tag{43}$$

A useful equivalent form for b_h can be inferred introducing the discrete divergence operator $D_h : [H^1(\mathcal{T}_h)]^d \rightarrow \mathbb{P}_d^0(\mathcal{T}_h)$ defined as follows: For all $v \in [H^1(\mathcal{T}_h)]^d$ and all $w \in H^1(\mathcal{T}_h)$,

$$D_h(v) := \mathbf{G}_h(v_i) \cdot \mathbf{e}_i.$$

The subscript ω has been omitted from discrete gradient since $\kappa = \nu \mathbf{1}_d$ (as the kinematic viscosity is homogeneous and isotropic) implies $\omega_{T_1, F} = \omega_{T_2, F} = 1/2$ for all $F \in \mathcal{F}_h^i$ with $F \subset \partial T_1 \cap \partial T_2$. The discrete divergence D_h is defined as the trace of \mathbf{G}_h applied to a vector function. It follows from (43) that

$$\forall (v_h, q_h) \in X_h, \quad b_h(v_h, q_h) = - \int_{\Omega} q_h D_h(v_h). \quad (44)$$

We let, for all vector functions $v_h \in U_h$,

$$\|v_h\|^2 := \sum_{i=1}^d \|v_{h,i}\|^2, \quad |v_h|_J^2 := \sum_{i=1}^d |v_{h,i}|_J^2.$$

As the discrete operator associated to the discrete bilinear form b_h is not surjective, pressure stabilization must be introduced. To this end, we define the bilinear form $s_h \in \mathcal{L}(P_h \times P_h, \mathbb{R})$ and the associated seminorm $|\cdot|_p$ such that

$$s_h(p_h, q_h) := \sum_{F \in \mathcal{F}_h^i} h_F \int_F \llbracket p_h \rrbracket \llbracket q_h \rrbracket, \quad |q_h|_p^2 := s_h(q_h, q_h).$$

We are now ready to state the main result of this section.

Lemma 37 (Stability of the velocity-pressure coupling). *Under Assumption 23, there exists $\beta > 0$ independent of the meshsize h such that*

$$\forall q_h \in P_h, \quad \beta \|q_h\|_{L^2(\Omega)} \leq \sup_{w_h \in U_h \setminus \{0\}} \frac{b_h(w_h, q_h)}{\|w_h\|} + |q_h|_p.$$

Proof. In the proof we abbreviate $a \lesssim b$ the inequality $a \leq Cb$ where C can depend on the mesh regularity parameters and on Ω but not on the meshsize h . Owing to the surjectivity of the divergence operator from U to P , there exists $C_\Omega > 0$ uniquely depending on the domain Ω such that, for all $q \in L_0^2(\Omega)$, there exists $v \in [H_0^1(\Omega)]^d$ such that

$$\nabla \cdot v = q, \quad C_\Omega \|v\|_{[H^1(\Omega)]^d} \leq \|q\|_{L^2(\Omega)}. \quad (45)$$

Let now $q = q_h$, denote by v the element of $[H_0^1(\Omega)]^d$ satisfying (45) and set $\mathbf{v}_h := (\langle v \rangle_T)_{T \in \mathcal{T}_h} \in \mathbb{V}_h$ and $v_h := \mathfrak{R}_h^{\text{cvg}}(\mathbf{v}_h) \in V_h^{\text{cvg}}$. Then,

$$\begin{aligned} C_\Omega \|v\|_{[H^1(\Omega)]^d} \|q_h\|_{L^2(\Omega)} &\leq \|q_h\|_{L^2(\Omega)}^2 = \int_{\Omega} q_h \nabla \cdot v = \sum_{F \in \mathcal{F}_h^i} \int_F \llbracket q_h \rrbracket \{v\} \cdot \mathbf{n}_F = -b_h(v_h, q_h) + \sum_{F \in \mathcal{F}_h^i} \int_F \llbracket q_h \rrbracket \{v - v_h\} \cdot \mathbf{n}_F \\ &\leq \left\{ \sup_{w_h \in U_h \setminus \{0\}} \frac{b_h(w_h, q_h)}{\|w_h\|} \right\} \|v_h\| + |q_h|_p \times \left\{ \sum_{F \in \mathcal{F}_h^i} h_F^{-1} \int_F |\{v - v_h\}|^2 \right\}^{1/2}. \end{aligned}$$

It follows from Lemma 38 that $\|v_h\| \lesssim \|v\|_{[H^1(\Omega)]^d}$. Moreover, using the continuous trace inequality (6) together with the approximation properties of \mathcal{T}_h , it is readily proven that $\sum_{F \in \mathcal{F}_h^i} h_F^{-1} \int_F |\{v - v_h\}|^2 \lesssim \|v\|_{H^1(\Omega)}^2$. \square

The following lemma establishes the H^1 -stability property used in the proof of Lemma 37. Observe that, unlike elsewhere, the degrees of freedom are here interpreted as average values over the cells, since the regularity

of the function v is in general insufficient for point values to be defined inside elements. The proof is given in §A.3.

Lemma 38 (H^1 -stability). *Under Assumption 23, for all $v \in H_0^1(\Omega)$ there holds*

$$\|v_h\| \leq C \|v\|_{H^1(\Omega)},$$

where $\mathbf{v}_h = (\langle v \rangle_T)_{T \in \mathcal{T}_h} \in \mathbb{V}_h$, $v_h = \mathfrak{R}_h^{\text{ccg}}(\mathbf{v}_h) \in V_h^{\text{ccg}}$ and C is independent of the meshsize h .

3.2.2. A non-dissipative convective trilinear form

The discrete convective trilinear form $t_h \in \mathcal{L}(U_h \times U_h \times U_h, \mathbb{R})$ is given by

$$t_h(w_h, u_h, v_h) := \int_{\Omega} (w_h \cdot \nabla_h u_{h,i}) v_{h,i} - \sum_{F \in \mathcal{F}_h^i} \int_F \{w_h\} \cdot \mathbf{n}_F \llbracket u_h \rrbracket \cdot \{v_h\} + \frac{1}{2} \int_{\Omega} (\nabla_h \cdot w_h) (u_h \cdot v_h) - \frac{1}{2} \sum_{F \in \mathcal{F}_h} \int_F \llbracket w_h \rrbracket \cdot \mathbf{n}_F \{u_h \cdot v_h\}.$$

The following lemma collects some important results. The proof essentially follows [22, Proposition 5.2]. In particular, the Sobolev embedding (19) for $q = 4$ is required, which limits the space dimension to $d \in \{2, 3\}$.

Lemma 39 (Properties of the trilinear form t_h). *For all $h \in \mathcal{H}$, let $\mathcal{U}_h := [\mathbb{P}_d^k(\mathcal{T}_h)]^d$ for some $k > 0$. The trilinear form t_h defined by (3.2.2) enjoys the following properties:*

- (i) Non-dissipativity. *For all $w_h, v_h \in \mathcal{U}_h$, $t_h(w_h, v_h, v_h) = 0$.*
- (ii) Boundedness. *There is $C_{\text{bnd},t}$ independent of the meshsize h such that, for all $w_h, u_h, v_h \in \mathcal{U}_h$, $t_h(w_h, u_h, v_h) \leq C_{\text{bnd},t} \|w_h\| \|u_h\| \|v_h\|$.*
- (iii) Asymptotic consistency for smooth functions. *Let $(v_h)_{h \in \mathcal{H}}$ be a sequence in $(\mathcal{U}_h)_{h \in \mathcal{H}}$ bounded in the $\|\cdot\|$ -norm. Then, for all $\Phi \in [C_0^\infty(\Omega)]^d$, as $h \rightarrow 0$, up to a subsequence, $t_h(v_h, v_h, \Phi_h) \rightarrow t(v, v, \Phi)$, where $\Phi_h := (\mathfrak{R}_h^{\text{ccg}} \circ \mathcal{I}_h^{\text{ccg}})(\Phi) \in U_h$ and $v \in U$ is the limit provided by Theorem 15.*
- (iv) Asymptotic consistency for test functions. *In the setting of point (iii), further suppose that $\mathbf{G}_h(v_h) \rightarrow \nabla v$ strongly in $[L^2(\Omega)]^d$ and that $|v_h|_{\mathcal{J}} \rightarrow 0$. Let $(w_h)_{h \in \mathcal{H}}$ be another sequence in $(\mathcal{U}_h)_{h \in \mathcal{H}}$ bounded in the $\|\cdot\|$ -norm. Then, as $h \rightarrow 0$, up to a subsequence, $t_h(v_h, v_h, w_h) \rightarrow t(v, v, w)$, with both $v, w \in U$ resulting from Theorem 15.*

The discrete problem reads

$$\text{Find } (u_h, p_h) \in X_h \text{ s.t. } c_h((u_h, p_h), (v_h, q_h)) + t_h(u_h, u_h, v_h) = \int_{\Omega} f \cdot v_h \text{ for all } (v_h, q_h) \in X_h, \quad (46)$$

with bilinear form $c_h \in \mathcal{L}(X_h \times X_h, \mathbb{R})$ such that $c_h := \sum_{i=1}^d a_h(u_{h,i}, v_{h,i}) + b_h(v_h, p_h) - b_h(u_h, q_h) + s_h(p_h, q_h)$ and we have set $\kappa = \nu \mathbf{1}_d$ in the expression of a_h .

3.3. Convergence

We study the convergence of the method (46) in the spirit of §2.4. As the ccG space V_h^{ccg} is a subspace of $\mathbb{P}_d^1(\mathcal{T}_h)$, some of the results presented in [22, §5] in the context of dG methods hold *a fortiori*. In such cases, the details of the proofs are omitted in order to restrict the focus to the peculiarities of the proposed ccG method. Also, since the diffusion coefficient is homogeneous, the standard test space $C_0^\infty(\Omega)$ can replace $\mathcal{Q}_{P_\Omega, \kappa}$ in the convergence proof. The following lemmata contain results that are instrumental to the analysis.

Lemma 40 (Properties of D_h). *The discrete divergence D_h enjoys the following properties:*

- (i) Consistency for smooth functions. *Let $\Phi \in [C_0^\infty(\Omega)]^d$ and set $\Phi_h := (\mathfrak{R}_h^{\text{ccg}} \circ \mathcal{I}_h^{\text{ccg}})(\Phi) \in U_h$. Then, under Assumption 23, as $h \rightarrow 0$, $D_h(\Phi_h) \rightarrow \nabla \cdot \Phi$ strongly in $L^2(\Omega)$.*
- (ii) Weak asymptotic consistency for test functions. *Let $(v_h)_{h \in \mathcal{H}}$ be a sequence in U_h uniformly bounded in the $\|\cdot\|$ -norm. Then, as $h \rightarrow 0$, up to a subsequence, $D_h(v_h) \rightharpoonup \nabla \cdot v$ weakly in $L^2(\Omega)$, where $v \in [H_0^1(\Omega)]^d$ is the limit resulting from Theorem 15.*

Proof. Point (i) is a direct consequence of Theorem 24 together with the fact that $\kappa = \nu \mathbf{1}_d$ implies $C_0^\infty(\Omega) \subset \mathcal{Q}_{P\Omega, \kappa}$ and that $[\Phi]_F(\mathbf{x}) = 0$ for all $F \in \mathcal{F}_h$ and all $\mathbf{x} \in F$. Point (ii) immediately follows from Lemma 16. \square

Lemma 41 (Existence of a solution to (46)). *There exists $(u_h, p_h) \in X_h$ solution to (46).*

Proof. The proof is based on a topological degree argument and it follows [22, Proposition 5.1]. The use of a topological degree argument to assert the existence of a discrete solution can be traced back to Eymard, Herbin, and Latché [34]. \square

The first step in the convergence proof is to derive a uniform *a priori* estimate on a suitable norm of the discrete solution. This estimate is used to infer a compactness property for the sequence of discrete solutions. To this end, we introduce the following norm on X_h :

$$\|(v_h, q_h)\|_{\text{ns}}^2 := \|v_h\|^2 + \|q_h\|_{L^2(\Omega)}^2 + |q_h|_p^2.$$

Lemma 42 (*A priori estimate*). *There exists $\gamma > 0$ independent of the meshsize h such that*

$$\gamma \|(u_h, p_h)\|_{\text{ns}} \leq \sigma_2 \|f\|_{[L^2(\Omega)]^d} + C_{\text{bnd}, t} (\nu C_{\text{sta}})^{-1} (\sigma_2 \|f\|_{[L^2(\Omega)]^d})^2. \quad (47)$$

where $C_{\text{bnd}, t}$ results from Lemma 39ii, C_{sta} is the coercivity constant of a_h , and σ_2 results from Theorem 14.

Proof. The proof proceeds along the lines of [22, Lemma 5.1]. The details are omitted for the sake of brevity. \square

Theorem 43 (Convergence). *Let $((u_h, p_h))_{h \in \mathcal{H}}$ be a sequence of approximate solutions generated by solving the discrete problems (46) on the admissible mesh sequence $\mathcal{T}_{\mathcal{H}}$. Then, under Assumption 23, as $h \rightarrow 0$, up to a subsequence, (i) $u_h \rightarrow u$ strongly in $[L^2(\Omega)]^d$, (ii) $\nabla_h u_h \rightarrow \nabla u$ strongly in $[L^2(\Omega)]^{d, d}$, (iii) $|u_h|_{\text{J}} \rightarrow 0$, (iv) $p_h \rightarrow p$ strongly in $L^2(\Omega)$, (v) $|p_h|_p \rightarrow 0$, with $(u, p) \in X$ solution to (42). If the continuous solution (u, p) is unique, the convergence property extends to the whole sequence.*

Proof. (i) *Compactness.* Owing to the *a priori* estimate (47), by Theorem 15 together with Lemma 16 there exists $(\bar{u}, \bar{p}) \in X$ such that, up to a subsequence, $u_h \rightarrow \bar{u}$ strongly in $[L^2(\Omega)]^d$, $\mathbf{G}_h(u_{h,i}) \rightharpoonup \nabla \bar{u}_i$ weakly in $[L^2(\Omega)]^d$ for $i \in \{1, \dots, d\}$, and $p_h \rightharpoonup \bar{p}$ weakly in $L^2(\Omega)$ (as the sequence $(p_h)_{h \in \mathcal{H}}$ is bounded in the L^2 -norm uniformly with respect to h). For the sake of conciseness, subsequences are not renumbered in what follows.

(ii) *Identification of the limit and convergence of a subsequence.* Let $\Phi \in [C_0^\infty(\Omega)]^d$ and set $\Phi_h := (\mathfrak{R}_h^{\text{ccg}} \circ \mathcal{I}_h^{\text{ccg}})(\Phi) \in U_h$. Using $(\Phi_h, 0)$ as a test function yields

$$a_h(u_h, \Phi_h) + b_h(\Phi_h, p_h) + t_h(u_h, u_h, \Phi_h) = \int_{\Omega} f \cdot \Phi_h.$$

Clearly, as $h \rightarrow 0$, the right-hand side tends to $\int_{\Omega} f \cdot \Phi$. Furthermore, by virtue of Lemma 33, the first term in the left-hand side converges to $a(u, \Phi) = \int_{\Omega} \nu \nabla u_i \cdot \nabla \Phi_i$. Using (44), the second term can be written as $b_h(\Phi_h, p_h) = -\int_{\Omega} p_h D_h(\Phi_h)$. Owing to the weak convergence of $(p_h)_{h \in \mathcal{H}}$ to \bar{p} in $L^2(\Omega)$ and to the strong convergence of $(D_h(\Phi_h))_{h \in \mathcal{H}}$ to $\nabla \cdot \Phi$ in $L^2(\Omega)$ stated in Lemma 40, this term converges to $b(\Phi, \bar{p}) = -\int_{\Omega} \bar{p} \nabla \cdot \Phi$. Finally $t_h(u_h, u_h, \Phi_h)$ tends to $t(\bar{u}, \bar{u}, \Phi)$ owing to Lemma 39iii. As a result,

$$a(\bar{u}, \Phi) + b(\Phi, \bar{p}) + t(\bar{u}, \bar{u}, \Phi) = \int_{\Omega} f \cdot \Phi.$$

Let now $\varphi \in C_0^\infty(\Omega)/\mathbb{R}$ and set $\varphi_h := \pi_h^0 \varphi$, where π_h^0 denotes the L^2 -orthogonal projection onto $\mathbb{P}_d^0(\mathcal{T}_h)$. Using $(0, \varphi_h)$ as a test function yields

$$-b_h(u_h, \varphi_h) + s_h(p_h, \varphi_h) = 0.$$

Clearly, $-b_h(u_h, \varphi_h) = \int_{\Omega} \varphi_h D_h(u_h)$ tends to $\int_{\Omega} \varphi \nabla \cdot \bar{u}$ as $h \rightarrow 0$ since $(D_h(u_h))_{h \in \mathcal{H}}$ weakly converges to $\nabla \cdot \bar{u}$ in $L^2(\Omega)$ owing to Lemma 40ii and $(\varphi_h)_{h \in \mathcal{H}}$ strongly converges to φ in $L^2(\Omega)$. Furthermore, using the *a priori*

estimate (47), $|s_h(p_h, \varphi_h)| \leq |p_h|_p |\varphi_h|_p \leq C |\varphi_h|_p$ with C independent of the meshsize h and this upper bound tends to zero. Hence,

$$\int_{\Omega} \varphi \nabla \cdot \bar{u} = 0.$$

By density of $[C_0^\infty(\Omega)]^d \times (C_0^\infty(\Omega)/\mathbb{R})$ in X , this shows that $(\bar{u}, \bar{p}) = (u, p)$ solution to (42).

(iii) *Strong convergence of the velocity gradient and of the velocity and pressure jumps.* Owing to the non-dissipativity of t_h , and recalling (38)

$$\int_{\Omega} f \cdot u_h = c_h((u_h, p_h), (u_h, p_h)) = a_h(u_h, u_h) + s_h(p_h, p_h) \geq a_h(u_h, u_h) \geq \nu \sum_{i=1}^d \|\mathbf{G}_h(u_{h,i})\|_{[L^2(\Omega)]^d}^2.$$

Thus, $\nu \limsup_{h \rightarrow 0} \sum_{i=1}^d \|\mathbf{G}_h(u_{h,i})\|_{[L^2(\Omega)]^d}^2 \leq \limsup_{h \rightarrow 0} \int_{\Omega} f \cdot u_h = \int_{\Omega} f \cdot u = \nu \|\nabla u\|_{[L^2(\Omega)]^d}^2$. Proceeding as in point (iv) of Theorem 35, it is then inferred that $\mathbf{G}_h(u_{h,i}) \rightarrow \nabla u_i$ in $[L^2(\Omega)]^d$ for all $i \in \{1, \dots, d\}$ and that $|u_h|_J \rightarrow 0$. Finally, since $|p_h|_p^2 = b_h(u_h, p_h) = \int_{\Omega} f \cdot u_h - a_h(u_h, u_h)$, we conclude that $|p_h|_p \rightarrow 0$.

(v) *Strong convergence of the pressure.* Let $v \in [H_0^1(\Omega)]^d$ be such that $\nabla \cdot v = p_h$ with $\|v\|_{[H^1(\Omega)]^d} \leq C_{\Omega} \|p_h\|_{L^2(\Omega)}$, and set $v_h := \mathfrak{R}_h^{\text{cvg}}(\mathbf{v}_h) \in V_h^{\text{cvg}}$ with $\mathbf{v}_h = (\langle v \rangle_T)_{T \in \mathcal{T}_h} \in \mathbb{V}_h$. In the rest of the proof we abbreviate $a \lesssim b$ the inequality $a \leq Cb$ with C independent of the meshsize h . Proceeding as in the proof of Lemma 37 yields

$$\|p_h\|_{L^2(\Omega)}^2 \lesssim |p_h|_p \|p_h\|_{L^2(\Omega)} - b_h(v_h, p_h) \lesssim |p_h|_p \|p_h\|_{L^2(\Omega)} + a_h(u_h, v_h) + t_h(u_h, u_h, v_h) - \int_{\Omega} f \cdot v_h.$$

Let \mathfrak{T}_i , $i \in \{1, \dots, 4\}$ denote the terms in the right-hand side. Since $|p_h|_p$ tends to zero and $\|p_h\|_{L^2(\Omega)}$ is bounded, \mathfrak{T}_1 converges to zero. Furthermore, since the sequence $(v_h)_{h \in \mathcal{H}}$ is bounded in the $\|\cdot\|$ -norm because $\|v_h\| \lesssim \|v\|_{[H^1(\Omega)]^d} \lesssim \|p_h\|_{L^2(\Omega)}$ there is $\bar{v} \in [H_0^1(\Omega)]^d$ such that, up to a subsequence, $v_h \rightarrow \bar{v}$ strongly in $[L^2(\Omega)]^d$ and $\mathbf{G}_h(v_{h,i}) \rightarrow \nabla \bar{v}_i$ weakly in $[L^2(\Omega)]^d$ for $i \in \{1, \dots, d\}$. Owing to the uniqueness of the limit in the distribution sense, it is inferred that $\nabla \cdot \bar{v} = p$. There holds

$$\mathfrak{T}_2 = a_h(u_h, v_h) = \int_{\Omega} \nu \mathbf{G}_h(u_{h,i}) \cdot \mathbf{G}_h(v_{h,i}) + s_h(u_h, v_h) = \mathfrak{T}_{2,1} + \mathfrak{T}_{2,2}.$$

Owing to the strong convergence of $(\mathbf{G}_h(u_{h,i}))_{h \in \mathcal{H}}$ in $[L^2(\Omega)]^d$ proven in the previous point together with the weak convergence of $(\mathbf{G}_h(v_{h,i}))_{h \in \mathcal{H}}$ in $[L^2(\Omega)]^d$ yields $\mathfrak{T}_{2,1} \rightarrow \int_{\Omega} \nabla u_i \cdot \nabla \bar{v}_i$. Moreover, $|\mathfrak{T}_{2,2}| \lesssim |u_h|_J |v_h|_J$, which converges to zero. Owing to Lemma 39iv, $\mathfrak{T}_3 \rightarrow t(u, u, \bar{v})$. Finally, since $\mathfrak{T}_4 \rightarrow \int_{\Omega} f \cdot \bar{v}$, the strong convergence of the pressure in L^2 classically follows from

$$\limsup_{h \rightarrow 0} \|p_h\|_{L^2(\Omega)}^2 \leq \int_{\Omega} \nabla u_i \cdot \nabla \bar{v}_i + t(u, u, \bar{v}) - \int_{\Omega} f \cdot \bar{v} = \int_{\Omega} p \nabla \cdot \bar{v} = \|p\|_{L^2(\Omega)}^2. \quad \square$$

4. NUMERICAL EXAMPLES

4.1. Pure diffusion

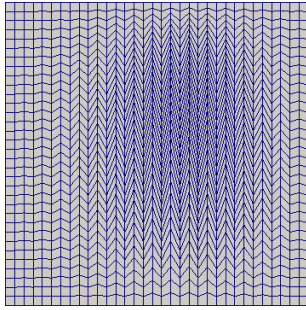
Anisotropy. To investigate the behaviour of the method (28) for anisotropic diffusion tensors we consider the following exact solution to problem (23) in $d = 2$:

$$u = \sin(\pi x) \sin(\pi y), \quad \kappa = \begin{bmatrix} 1 & 0 \\ 0 & \epsilon \end{bmatrix}, \quad f = (1 + \epsilon) \pi^2 \sin(\pi x) \sin(\pi y), \quad (48)$$

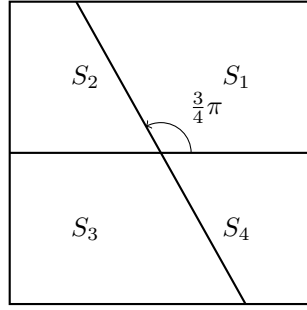
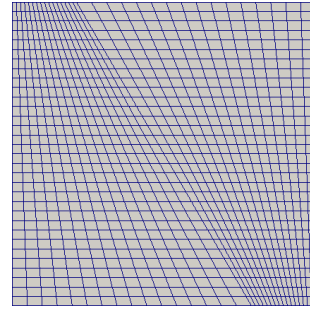
with anisotropy ratio $\epsilon = 10^{-3}$. The discrete problem is solved on the Kershaw mesh sequence 4.2 of the FVCA5 benchmark [37] (cf. Figure 3(a)), and the results are listed in Table 1. Besides the errors in the L^2 -and

TABLE 1. Anisotropic test case

$\text{card}(\mathcal{T}_h)$	$\ u - u_h\ _{L^2(\Omega)}$	order	$\ u - u_h\ $	order	$\max_{F \in \mathcal{F}_h^i} \ \mathbf{A}_{\mathbf{g}_F}^{-1}\ _\infty$	cg+AMG it.
9801	1.2396e-02	—	5.1296e-02	—	1.0028e+03	41
17424	6.8589e-03	2.06	3.3572e-02	1.47	1.0018e+03	49
27225	3.9340e-03	2.49	2.3897e-02	1.52	1.0013e+03	55
39204	2.5485e-03	2.38	1.8058e-02	1.54	1.0009e+03	62

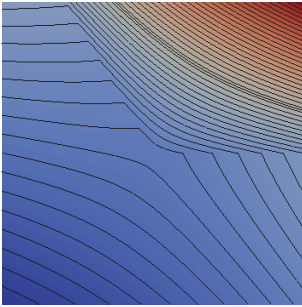
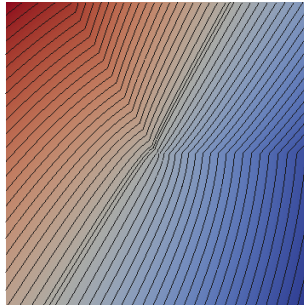
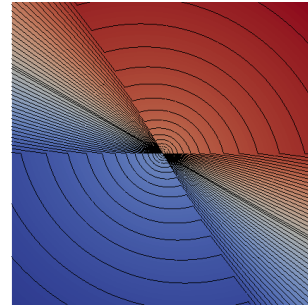


(a) Example of mesh for the test case (48)

(b) Partition P_Ω for the test cases (49)–(51)

(c) Example of mesh for the test cases (49)–(51)

FIGURE 3. Configurations for pure diffusion test cases

(a) Test case (49), $u \in H^{2.29}(\Omega)$ (b) Test case (50), $u \in H^{1.79}(\Omega)$ (c) Test case (51), $u \in H^{1.29}(\Omega)$ FIGURE 4. Numerical solutions of problem (22) (128×128 mesh)

energy-norms, Table 1 lists the maximum $\|\cdot\|_\infty$ -norm of the matrices defined by (14) as well as the number of conjugate gradient iterations with AMG preconditioner required to solve the linear system. An inspection of column 6 shows that Assumption 23 is satisfied since the largest norm of the matrices involved in the local construction remains almost constant when refining the mesh. Here and in what follows, we estimate the order of convergence as

$$\text{order} = d \ln(e_1/e_2) / \ln(\text{card}(\mathcal{T}_{h_2})/\text{card}(\mathcal{T}_{h_1})),$$

where e_1 and e_2 denote, respectively, the discretization errors on \mathcal{T}_{h_1} and \mathcal{T}_{h_2} , $h_1, h_2 \in \mathcal{H}$.

Heterogeneity. To assess the behaviour of the method with respect to the heterogeneity of the diffusion tensor we consider the solutions proposed in [3, §III]. The domain $\Omega = (0,1)^2$ is partitioned into four areas corresponding to different values of the diffusion coefficient κ as depicted in Figure 3(b), and we consider a sequence of meshes matching Assumption 9; see Figure 3(c). The permeability coefficient is such that $\kappa|_{S_1} =$

TABLE 2. Heterogeneous solution (49), $u \in H^{2.29}(\Omega)$

$\text{card}(\mathcal{T}_h)$	$\ u - u_h\ _{L^2(\Omega)}$	order	$\ u - u_h\ $	order	$\max_{F \in \mathcal{F}_h^i} \ \mathbf{A}_{\mathbf{g}_F}^{-1}\ _\infty$	cg+AMG it.
8×8	6.5808e-3	—	1.9547e-2	—	1.1656e+1	5
16×16	1.9161e-3	1.78	7.8171e-3	1.33	1.2094e+1	6
32×32	4.3365e-3	2.14	3.2200e-3	1.28	1.2301e+1	7
64×64	9.6024e-5	2.18	1.3410e-3	1.26	1.2401e+1	8
128×128	2.1670e-5	2.15	5.5576e-4	1.27	1.2451e+1	9

TABLE 3. Heterogeneous solution (50), $u \in H^{1.79}(\Omega)$

$\text{card}(\mathcal{T}_h)$	$\ u - u_h\ _{L^2(\Omega)}$	order	$\ u - u_h\ $	order	$\max_{F \in \mathcal{F}_h^i} \ \mathbf{A}_{\mathbf{g}_F}^{-1}\ _\infty$	cg+AMG it.
8×8	1.6679e-2	—	3.2200e-2	—	1.1656e+1	6
16×16	5.0746e-3	1.72	1.8484e-2	0.80	1.2094e+1	7
32×32	1.5348e-3	1.72	1.0777e-2	0.78	1.2301e+1	8
64×64	4.6235e-4	1.73	6.2691e-3	0.78	1.2401e+1	9
128×128	1.4042e-4	1.72	3.6333e-3	0.79	1.2451e+1	10

$k_1 \mathbf{1}_d$ and $\kappa_{|\Omega \setminus S_1|} = k_2 \mathbf{1}_d$. Using polar coordinates (r, θ) with $\theta = \cos^{-1}(x/r)$ and origin at the center of Figure 3(b), the first solution is given by

$$u = \begin{cases} r^\alpha \cos(\alpha(\theta - \pi/3)) & \text{if } \theta \in [0, 2\pi/3), \\ r^\alpha \beta \cos(4\pi/3 - \theta) & \text{if } \theta \in [2\pi/3, 2\pi), \end{cases} \quad (49)$$

where $\alpha = 3/\pi \tan^{-1}(\sqrt{1+2/\epsilon})$, $\beta = \cos(\alpha\pi/3)/\cos(2\alpha\pi/3)$ and $\epsilon = k_1/k_2$ is the heterogeneity ratio taken equal to 0.1. It can be proven that $u \in H^{2.29}(\Omega)$. The convergence results for this case are collected in Table 2. A second solution with less regularity is the following:

$$u = \begin{cases} r^\alpha \sin(\alpha(\theta - \pi/3)) & \text{if } \theta \in [0, 2\pi/3), \\ r^\alpha \beta \sin(\alpha(4\pi/3 - \theta)) & \text{if } \theta \in [2\pi/3, 2\pi), \end{cases} \quad (50)$$

where now $\alpha = 3/\pi \tan^{-1}(\sqrt{1+2\epsilon})$, $\beta = (2\cos(\alpha\pi/3))^{-1}$ and, as before, $\epsilon = k_1/k_2 = 0.1$. In this case, $u \in H^{1.79}(\Omega)$. The convergence results collected in Table 3 show, in particular, that the order of convergence remains optimal even for solution that do not sit in $H^2(\Omega)$. To conclude, we consider a solution with an even stronger singularity at the origin. In this case $\kappa_{|S_1|}$ and $\kappa_{|S_3|}$ are constant and equal to $k_1 \mathbf{1}_d$ whereas $\kappa_{|S_2|}$ and $\kappa_{|S_4|}$ are constant and equal to $k_2 \mathbf{1}_d$. This solution satisfies $u(r, \theta) = -u(r, \theta - \pi)$ for $\theta \in [0, \pi)$ and reads

$$u = \begin{cases} r^\alpha \cos(\alpha(\theta - \pi/3)) & \text{if } \theta \in [0, 2\pi/3), \\ r^\alpha \beta \sin(\alpha(5\pi/6 - \theta)) & \text{if } \theta \in [2\pi/3, \pi), \end{cases} \quad (51)$$

where $\alpha = 6/\pi \tan^{-1}(1/\sqrt{1+2/\epsilon})$, $\beta = 1/(2\cos(\alpha\pi/3))$ and this time $\epsilon = k_2/k_1 = 1/30$. This solution belongs to $H^{1.29}(\Omega)$. The convergence results are collected in Table 4. Similar considerations as for the test case (50) hold.

TABLE 4. Heterogeneous solution (51), $u \in H^{1.29}(\Omega)$

$\text{card}(\mathcal{T}_h)$	$\ u - u_h\ _{L^2(\Omega)}$	order	$\ u - u_h\ $	order	$\max_{F \in \mathcal{F}_h^i} \ \mathbf{A}_{\mathbf{g}_F}^{-1}\ _\infty$	cg+AMG it.
8×8	3.5383e-2	–	2.0444e-1	–	1.2318	11
16×16	1.7796e-2	0.99	1.6836e-1	0.28	1.2416	16
32×32	8.0164e-3	1.15	1.3747e-1	0.29	1.2459	17
64×64	3.5358e-3	1.18	1.1341e-1	0.28	1.2480	20
128×128	1.5628e-3	1.18	9.4240e-2	0.27	1.2490	23

TABLE 5. Convergence results for the Kovasznay problem

$\text{card}(\mathcal{T}_h)$	$\ u - u_h\ _{[L^2(\Omega)]^d}$	order	$\ p - p_h\ _{L^2(\Omega)}$	order	$\ u - u_h\ _{\text{ns}}$	order
224	1.6539e-01	–	2.5536e-01	–	4.7777e-01	–
896	4.3732e-02	1.92	1.0737e-01	1.25	2.1759e-01	1.13
3584	1.1847e-02	1.88	3.9802e-02	1.43	1.0763e-01	1.02
14336	3.1620e-03	1.91	1.7385e-02	1.19	5.5182e-02	0.96

4.2. Steady incompressible Navier–Stokes equations

The Kovasznay problem. To verify the asymptotic convergence properties of the method (46), we consider Kovasznay’s analytical solution of the INS equations [39] on the square domain $\Omega = (-0.5, 1.5) \times (0, 2)$,

$$u_1 = 1 - e^{\pi x_2} \cos(2\pi x_2), \quad u_2 = -1/2 e^{\pi x_1} \sin(2\pi x_2), \quad p = -1/2 e^{\pi x_1} \cos(2\pi x_2) - \bar{p},$$

where $\bar{p} = \langle -\frac{1}{2} e^{\pi x_1} \cos(2\pi x_2) \rangle_\Omega \approx -0.920735694$ ensures the zero mean constraint for the pressure, $\nu = 3\pi$, and $f = 0$ (the solution is nontrivial albeit $f = 0$ since the boundary condition is non homogeneous). The example is run on a family of uniformly refined triangular meshes with mesh sizes ranging from 0.5 down to 0.03125. According to Table 5, the errors $\|u - u_h\|_{\text{ns}}$ and $\|p - p_h\|_{L^2(\Omega)}$ converge to first order, while second order is attained for $\|u - u_h\|_{[L^2(\Omega)]^d}$.

The lid-driven cavity problem. To assess the behavior of the method in more complex situations we consider the classical lid-driven cavity problem. Despite its simple geometry, at large Reynolds numbers this problem presents complex flow patterns with counter-rotating vortices of significantly different scale. The domain is here the unit square with imposed horizontal velocity on the upper side and zero velocity on the others. In Figure 5 we provide the values of the velocity components on the centerlines of the domain. For the sake of completeness, we compare against the method of [22] with piecewise linear approximations of the velocity and the pressure. In both cases a uniform 128×128 Cartesian orthogonal mesh is used. The reference data of Erturk, Corke, and Gökçöl [31] are also included for comparison. The proposed method shows essentially the same accuracy as the dG method of [22] at $\text{Re} = 1000$. To observe more sizable differences, we also present the results for $\text{Re} = 5000$ on the same mesh. In this case, where a slight loss of accuracy can be observed towards the boundaries of the domain.

Acknowledgements. The author is grateful to an anonymous referee for careful reading and constructive remarks. Discussions with Alexandre Ern (Ecole des Ponts ParisTech) are also gratefully acknowledged.

APPENDIX A. PROOFS

A.1. Proof of Theorem 24

We start by proving the following technical result.

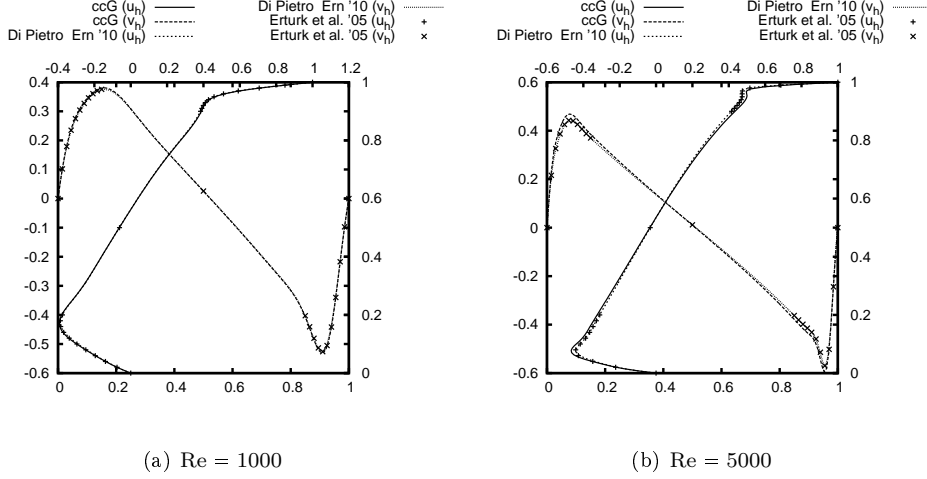


FIGURE 5. Lid-driven cavity problem, comparison of centerline velocity values (ccG = present work, Di Pietro Ern '10 = ref. [22], Erturk *et al.* '05 = ref. [31]).

Lemma 44 (Consistency of the trace reconstruction). *Let $v \in \mathcal{Q}_{P_\Omega, \kappa}$ and set $\mathbf{v}_h := \mathcal{I}_h^{\text{ccg}}(v)$ and $(v_F)_{F \in \mathcal{F}_h} = \mathfrak{T}_h(\mathbf{v}_h)$. Under Assumption 23 there holds for all $h \in \mathcal{H}$, all $v \in \mathcal{Q}_{P_\Omega, \kappa}$, and all $F \in \mathcal{F}_h$,*

$$|v_F - v(\bar{\mathbf{x}}_F)| \leq Ch_{T_{\mathfrak{g}_F}}^2,$$

where C depends on κ , on the mesh regularity parameters, on Λ , and on $\|v\|_{C^2(\mathcal{T}_h)}$.

Proof. The assertion is trivially verified for $F \in \mathcal{F}_h^b$. Let now $F \in \mathcal{F}_h^i$. Using the Taylor expansion of v about $\mathbf{x}_{T_{\mathfrak{g}_F}}$ together with the fact that $T_{\mathfrak{g}_F}$ is star-shaped with respect to $\mathbf{x}_{T_{\mathfrak{g}_F}}$, we conclude that there exists $\mathbf{y}(\bar{\mathbf{x}}_F) \in [\mathbf{x}_{T_{\mathfrak{g}_F}}, \mathbf{x}]$ such that

$$v(\bar{\mathbf{x}}_F) = v(\mathbf{x}_{T_{\mathfrak{g}_F}}) + \nabla v(\mathbf{x}_{T_{\mathfrak{g}_F}}) \cdot (\bar{\mathbf{x}}_F - \mathbf{x}_{T_{\mathfrak{g}_F}}) + \frac{1}{2}(\bar{\mathbf{x}}_F - \mathbf{x}_{T_{\mathfrak{g}_F}})^t \mathbf{H}v(\mathbf{y}(\bar{\mathbf{x}}_F))(\bar{\mathbf{x}}_F - \mathbf{x}_{T_{\mathfrak{g}_F}}),$$

where $\mathbf{H}v(\mathbf{y}(\bar{\mathbf{x}}_F))$ denotes the Hessian of v evaluated at $\mathbf{y}(\bar{\mathbf{x}}_F)$. Similarly, letting $\mathbf{v}_h = \mathcal{I}_h^{\text{ccg}}(v)$ and $(v_F)_{F \in \mathcal{F}_h} := \mathfrak{T}_h(\mathbf{v}_h) \in \mathbb{R}^{\mathcal{F}_h}$,

$$v_F = v(\mathbf{x}_{T_{\mathfrak{g}_F}}) + \nabla \xi_{\mathbf{v}_h}^{\mathfrak{g}_F}|_{T_{\mathfrak{g}_F}} \cdot (\bar{\mathbf{x}}_F - \mathbf{x}_{T_{\mathfrak{g}_F}}).$$

Hence, $|v_F - v(\bar{\mathbf{x}}_F)| \leq h_T |\nabla \xi_{\mathbf{v}_h}^{\mathfrak{g}_F}|_{T_{\mathfrak{g}_F}} - \nabla v(\bar{\mathbf{x}}_F)| + \frac{h_T^2}{2} \|v\|_{C^2(\bar{\mathcal{T}})}$. The conclusion follows from Lemma 22. \square

We are now ready to prove Theorem 24.. The proof closely follows that of [5, Lemma 3.10]. Since it is clear that $\|w\|_{\kappa, \dagger} \leq \bar{\lambda}^{1/2} \|w\|_{\dagger}$ for all $w \in H^1(\mathcal{T}_h)$, we only show the second inequality in (33). In the rest of the proof we abbreviate $a \lesssim b$ the inequality $a \leq Cb$ where C can depend on κ , on the mesh regularity parameters, on Λ , and on $\|v\|_{C^2(\mathcal{T}_h)}$. Let $v \in \mathcal{Q}_{P_\Omega, \kappa}$ and set

$$\mathbf{v}_h := \mathcal{I}_h^{\text{ccg}}(v) \in \mathbb{V}_h, \quad v_h := \mathfrak{R}_h^{\text{ccg}}(\mathbf{v}_h) \in V_h^{\text{ccg}}, \quad (v_F)_{F \in \mathcal{F}_h} = \mathfrak{T}_h(\mathbf{v}_h) \in \mathbb{R}^{\mathcal{F}_h}.$$

(i) *Estimate of $\|\nabla v - \nabla_h v_h\|_{[L^2(\Omega)]^d}$.* For all $T \in \mathcal{T}_h$ and all $\mathbf{x} \in T$ there holds

$$\begin{aligned} \nabla_h v_h|_T - \nabla v(\mathbf{x}) &= \left\{ \nabla v(\mathbf{x}_T) - \nabla v(\mathbf{x}) \right\} + \left\{ \frac{1}{|T|_d} \sum_{F \in \mathcal{F}_T} |F|_{d-1} (v_F - v(\bar{\mathbf{x}}_F)) \mathbf{n}_{T,F} \right\} \\ &\quad + \left\{ \frac{1}{|T|_d} \sum_{F \in \mathcal{F}_T} |F|_{d-1} (v(\bar{\mathbf{x}}_F) - v(\mathbf{x}_T)) \mathbf{n}_{T,F} - \nabla v(\mathbf{x}_T) \right\} := \mathfrak{T}_1 + \mathfrak{T}_2 + \mathfrak{T}_3. \end{aligned}$$

It is clear that $|\mathfrak{T}_1| \leq \|v\|_{C^2(\bar{T})} h_T$, hence $\sum_{T \in \mathcal{T}_h} \|\mathfrak{T}_1\|_{[L^2(T)]^d}^2 \lesssim |\Omega|_d h^2$. Using Lemma 44 together with the geometric relation (10) and mesh regularity it is inferred that

$$|\mathfrak{T}_2| \leq \sum_{F \in \mathcal{F}_T} \frac{|F|_{d-1} d_{T,F}}{|T|_d} \frac{|v_F - v(\bar{\mathbf{x}}_F)|}{d_{T,F}} \lesssim d \frac{h_{T_{\mathfrak{g}_F}}^2}{d_{T,F}} \lesssim h_{T_{\mathfrak{g}_F}}.$$

As a result, $\sum_{T \in \mathcal{T}_h} \|\mathfrak{T}_2\|_{[L^2(T)]^d}^2 \lesssim |\Omega|_d h^2$. To handle the last term, we use the magic formula [5, eq. (33)]: For all $T \in \mathcal{T}_h$ and all $\mathbf{x} \in T$,

$$\frac{1}{|T|_d} \sum_{F \in \mathcal{F}_T} |F|_{d-1} (\bar{\mathbf{x}}_F - \mathbf{x})_i (\mathbf{n}_{T,F})_j = \delta_{ij}, \quad (52)$$

where δ_{ij} is Kronecker's symbol. By virtue of (52), there holds

$$\mathfrak{T}_3 = \frac{1}{|T|_d} \sum_{F \in \mathcal{F}_T} |F|_{d-1} [v(\bar{\mathbf{x}}_F) - v(\mathbf{x}_T) - \nabla v(\mathbf{x}_T) \cdot (\bar{\mathbf{x}}_F - \mathbf{x}_T)] \mathbf{n}_{T,F} \leq \sum_{F \in \mathcal{F}_T} \frac{|F|_{d-1} d_{T,F}}{|T|_d} \|v\|_{C^2(\bar{T})} h_T.$$

Proceeding as for \mathfrak{T}_2 , we easily infer that $\sum_{T \in \mathcal{T}_h} \|\mathfrak{T}_3\|_{[L^2(T)]^d}^2 \lesssim |\Omega|_d h^2$, thereby concluding that

$$\|\nabla v - \nabla_h v_h\|_{[L^2(\Omega)]^d} \lesssim h.$$

(ii) *Estimate of the remaining terms in $\|\cdot\|_{\dagger}$.* By the continuous trace inequality (6),

$$|v - v_h|_J^2 \lesssim \sum_{F \in \mathcal{F}_h} h_F^{-1} \sum_{T \in \mathcal{T}_F} \|(v - v_h)|_T\|_{L^2(F)}^2 \leq C_{\text{tr},c}^2 \sum_{F \in \mathcal{F}_h} h_F^{-1} \sum_{T \in \mathcal{T}_F} \left\{ h_T^{-1} \|v - v_h\|_{L^2(T)}^2 + h_T |v - v_h|_{H^1(T)}^2 \right\}.$$

On the other hand, for all $T \in \mathcal{T}_h$, expanding v at \mathbf{x}_T and using the previous point to estimate $|\nabla v_h - \nabla v(\mathbf{x}_T)|$, it is proven that $\|v - v_h\|_{L^2(T)} \lesssim h_T^2$. It follows easily that $|v - v_h|_J \lesssim h$. The term $\sum_{T \in \mathcal{T}_h} h_T \|\nabla(v - v_h)|_T \cdot \mathbf{n}_T\|_{L^2(\partial T)}$ can be handled in a similar way using the trace inequality (6), thereby concluding the proof.

A.2. Proof of Theorem 27

Let $v \in V \cap H^2(\Omega)$, and set $\mathbf{v}_h := \mathcal{I}_h^{\text{ccg}}(v) \in \mathbb{V}_h$ and $(v_F)_{F \in \mathcal{F}_h} = \mathfrak{T}_h(\mathbf{v}_h) \in \mathbb{R}^{\mathcal{F}_h}$. In the rest of the proof we abbreviate $a \lesssim b$ the inequality $a \leq Cb$ where C can depend on the mesh regularity parameters but not on the meshsize h .

(i) *Estimate of $\|\nabla v - \nabla_h v_h\|_{[L^2(\Omega)]^d}$.* The quantity to estimate is decomposed as follows:

$$\begin{aligned} \|\nabla v - \nabla_h v_h\|_{[L^2(\Omega)]^d}^2 &= \sum_{T \in \mathcal{T}_h} \sum_{F \in \mathcal{F}_T} \int_{\mathcal{P}_{T,F}} |\nabla v - \nabla \xi_{\mathbf{v}_h}^{\mathfrak{g}_F} + \nabla \xi_{\mathbf{v}_h}^{\mathfrak{g}_F} - \nabla v_h|^2 \\ &\lesssim \sum_{T \in \mathcal{T}_h} \sum_{F \in \mathcal{F}_T} \int_{\mathcal{P}_{T,F}} |\nabla v - \nabla \xi_{\mathbf{v}_h}^{\mathfrak{g}_F}|^2 + \sum_{T \in \mathcal{T}_h} \sum_{F \in \mathcal{F}_T} \int_{\mathcal{P}_{T,F}} |\nabla \xi_{\mathbf{v}_h}^{\mathfrak{g}_F} - \nabla v_h|^2 := \mathfrak{T}_1 + \mathfrak{T}_2. \end{aligned} \quad (53)$$

For the first term it suffices to use Assumption 26 to infer

$$\mathfrak{T}_1 = \sum_{T \in \mathcal{T}_h} \sum_{F \in \mathcal{F}_T} |v - \xi_{\mathbf{v}_h}^{\mathbf{g}_F}|_{H^1(\mathcal{P}_{T,F})}^2 \lesssim h^2 |v|_{H^2(\Omega)}^2.$$

To estimate the second term, preliminarily observe that, for all $T \in \mathcal{T}_h$,

$$\nabla_h v_h|_T = \sum_{F' \in \mathcal{F}_T} \frac{|F'|_{d-1}}{|T|_d} \left(\xi_{\mathbf{v}_h}^{\mathbf{g}_{F'}}|_{\mathcal{P}_{T,F'}}(\bar{\mathbf{x}}_{F'}) - v_T \right) \mathbf{n}_{T,F'} = \sum_{F' \in \mathcal{F}_T} \frac{|F'|_{d-1}}{|T|_d} \nabla \xi_{\mathbf{v}_h}^{\mathbf{g}_{F'}}|_{\mathcal{P}_{T,F'}} \cdot (\bar{\mathbf{x}}_{F'} - \mathbf{x}_T) \mathbf{n}_{T,F'},$$

where we have used the linearity of $\xi_{\mathbf{v}_h}^{\mathbf{g}_{F'}}|_{\mathcal{P}_{T,F'}}$ together with the fact that $\xi_{\mathbf{v}_h}^{\mathbf{g}_{F'}}|_{\mathcal{P}_{T,F'}}(\mathbf{x}_T) = v_T$ to infer that $\xi_{\mathbf{v}_h}^{\mathbf{g}_{F'}}|_{\mathcal{P}_{T,F'}}(\bar{\mathbf{x}}_F) = v_T + \nabla \xi_{\mathbf{v}_h}^{\mathbf{g}_{F'}}|_{\mathcal{P}_{T,F'}} \cdot (\bar{\mathbf{x}}_{F'} - \mathbf{x}_T)$. Using formula (52) together with the definition of the gradient reconstruction (16), we obtain

$$\langle \nabla v \rangle_T - \nabla_h v_h|_T = \sum_{F' \in \mathcal{F}_T} \frac{|F'|_{d-1}}{|T|_d} \left(\langle \nabla v \rangle_T - \nabla \xi_{\mathbf{v}_h}^{\mathbf{g}_{F'}}|_{\mathcal{P}_{T,F'}} \right) \cdot (\bar{\mathbf{x}}_{F'} - \mathbf{x}_T) \mathbf{n}_{T,F'}. \quad (54)$$

Exploiting (54), we estimate $|\mathfrak{T}_2|$ as follows:

$$\begin{aligned} |\mathfrak{T}_2| &\lesssim \sum_{T \in \mathcal{T}_h} \sum_{F \in \mathcal{F}_T} |\mathcal{P}_{T,F}|_d \left| \nabla \xi_{\mathbf{v}_h}^{\mathbf{g}_F}|_{\mathcal{P}_{T,F}} - \langle \nabla v \rangle_{\mathcal{P}_{T,F}} \right|^2 + \sum_{T \in \mathcal{T}_h} \sum_{F \in \mathcal{F}_T} |\mathcal{P}_{T,F}|_d \left| \langle \nabla v \rangle_{\mathcal{P}_{T,F}} - \langle \nabla v \rangle_T \right|^2 \\ &+ \sum_{T \in \mathcal{T}_h} \sum_{F \in \mathcal{F}_T} |\mathcal{P}_{T,F}|_d \left| \sum_{F' \in \mathcal{F}_T} \frac{|F'|_{d-1}}{|T|_d} \left(\langle \nabla v \rangle_{\mathcal{P}_{T,F'}} - \nabla \xi_{\mathbf{v}_h}^{\mathbf{g}_{F'}}|_{\mathcal{P}_{T,F'}} \right) \cdot (\bar{\mathbf{x}}_{F'} - \mathbf{x}_T) \mathbf{n}_{T,F'} \right|^2 \\ &+ \sum_{T \in \mathcal{T}_h} \sum_{F \in \mathcal{F}_T} |\mathcal{P}_{T,F}|_d \left| \sum_{F' \in \mathcal{F}_T} \frac{|F'|_{d-1}}{|T|_d} \left(\langle \nabla v \rangle_T - \langle \nabla v \rangle_{\mathcal{P}_{T,F'}} \right) \cdot (\bar{\mathbf{x}}_{F'} - \mathbf{x}_T) \mathbf{n}_{T,F'} \right|^2 := \mathfrak{T}_{2,1} + \mathfrak{T}_{2,2} + \mathfrak{T}_{2,3} + \mathfrak{T}_{2,4}. \end{aligned}$$

The Cauchy–Schwarz inequality yields

$$\nabla \xi_{\mathbf{v}_h}^{\mathbf{g}_F}|_{\mathcal{P}_{T,F}} - \langle \nabla v \rangle_{\mathcal{P}_{T,F}} = \frac{1}{|\mathcal{P}_{T,F}|_d} \int_{\mathcal{P}_{T,F}} (\nabla \xi_{\mathbf{v}_h}^{\mathbf{g}_F} - \nabla v) \leq \frac{1}{|\mathcal{P}_{T,F}|_d^{1/2}} |\xi_{\mathbf{v}_h}^{\mathbf{g}_F} - v|_{H^1(\mathcal{P}_{T,F})},$$

whence, by Assumption 26,

$$\mathfrak{T}_{2,1} \leq \sum_{T \in \mathcal{T}_h} \sum_{F \in \mathcal{F}_T} |\xi_{\mathbf{v}_h}^{\mathbf{g}_F} - v|_{H^1(\mathcal{P}_{T,F})}^2 \lesssim h^2 |v|_{H^2(\Omega)}^2.$$

The term $\mathfrak{T}_{2,2}$ can be estimated in a similar fashion using the fact that

$$\langle \nabla v \rangle_{\mathcal{P}_{T,F}} - \langle v \rangle_T = \frac{1}{|\mathcal{P}_{T,F}|_d} \int_{\mathcal{P}_{T,F}} (\nabla v - \langle \nabla v \rangle_T),$$

and the approximation properties of the L^2 -projection of ∇v onto $[\mathbb{P}_d^0(\mathcal{T}_h)]^d$ to conclude. To estimate $\mathfrak{T}_{2,3}$, observe preliminarily that, for all $T \in \mathcal{T}_h$ and all $F' \in \mathcal{F}_T$, equation (9) yields

$$|F'|_{d-1} \left(\langle \nabla v \rangle_{\mathcal{P}_{T,F'}} - \nabla \xi_{\mathbf{v}_h}^{\mathbf{g}_{F'}}|_{\mathcal{P}_{T,F'}} \right) = \frac{d}{d_{T,F'}} \int_{\mathcal{P}_{T,F'}} (\nabla v - \nabla \xi_{\mathbf{v}_h}^{\mathbf{g}_{F'}}).$$

The Cauchy–Schwarz inequality together with (7) yield

$$\begin{aligned} \left| \sum_{F' \in \mathcal{F}_T} \frac{|F'|^{d-1}}{|T|^d} \left(\langle \nabla v \rangle_{\mathcal{P}_{T,F'}} - \nabla \xi_{\mathbf{v}_h}^{\mathbf{g}_{F'}}|_{\mathcal{P}_{T,F'}} \right) \cdot (\bar{\mathbf{x}}_{F'} - \mathbf{x}_T) \right|^2 &\leq \frac{d^2 h_T^2}{d_{T,F'}^2 |T|^d} \left| \sum_{F' \in \mathcal{F}_T} \int_{\mathcal{P}_{T,F'}} |\nabla v - \nabla \xi_{\mathbf{v}_h}^{\mathbf{g}_{F'}}| \right|^2 \\ &\leq \frac{d^2 h_T^2}{d_{T,F'}^2 |T|^d} \left\{ \sum_{F' \in \mathcal{F}_T} |\mathcal{P}_{T,F'}|_d \right\} \times \left\{ \sum_{F' \in \mathcal{F}_T} |v - \xi_{\mathbf{v}_h}^{\mathbf{g}_{F'}}|_{H^1(\mathcal{P}_{T,F'})}^2 \right\} = \frac{d^2}{|T|^d \varrho_3^2} \sum_{F' \in \mathcal{F}_T} |v - \xi_{\mathbf{v}_h}^{\mathbf{g}_{F'}}|_{H^1(\mathcal{P}_{T,F'})}^2. \end{aligned}$$

We therefore have

$$\begin{aligned} \mathfrak{T}_{2,3} &\leq \frac{d^2}{\varrho_3^2} \sum_{T \in \mathcal{T}_h} \sum_{F \in \mathcal{F}_T} \left\{ \frac{|\mathcal{P}_{T,F}|_d}{|T|^d} \sum_{F' \in \mathcal{F}_T} |v - \xi_{\mathbf{v}_h}^{\mathbf{g}_{F'}}|_{H^1(\mathcal{P}_{T,F'})}^2 \right\} \\ &= \frac{d^2}{\varrho_3^2} \sum_{T \in \mathcal{T}_h} \left\{ \sum_{F \in \mathcal{F}_T} \frac{|\mathcal{P}_{T,F}|_d}{|T|^d} \right\} \times \left\{ \sum_{F' \in \mathcal{F}_T} |v - \xi_{\mathbf{v}_h}^{\mathbf{g}_{F'}}|_{H^1(\mathcal{P}_{T,F'})}^2 \right\} = \frac{d^2}{\varrho_3^2} \sum_{T \in \mathcal{T}_h} \sum_{F' \in \mathcal{F}_T} |v - \xi_{\mathbf{v}_h}^{\mathbf{g}_{F'}}|_{H^1(\mathcal{P}_{T,F'})}^2, \end{aligned}$$

and, by Assumption 26, we infer that $\mathfrak{T}_{2,3} \lesssim h^2 \|v\|_{H^2(\Omega)}^2$. Similar geometric manipulations allow to prove that $\mathfrak{T}_{2,4} \lesssim h^2 \|v\|_{H^{l+1}(\Omega)}^2$. In conclusion,

$$\|\nabla v - \nabla_h v_h\|_{[L^2(\Omega)]^d} \lesssim h \|v\|_{H^2(\Omega)}.$$

(ii) *Estimate of the remaining terms in $\|\cdot\|_{\dagger}$.* We start by estimating $\|v - v_h\|_{L^2(\Omega)}$ in view of applying the trace inequality (6). Let $w_h \in \mathbb{P}_d^1(\mathcal{S}_h)$ be such that

$$\forall T \in \mathcal{T}_h, \forall F \in \mathcal{F}_T, \quad w_h|_{\mathcal{P}_{T,F}} = \xi_{\mathbf{v}_h}^{\mathbf{g}_F}|_{\mathcal{P}_{T,F}}.$$

The triangle inequality yields

$$\|v - v_h\|_{L^2(\Omega)} \leq \|v - w_h\|_{L^2(\Omega)} + \|w_h - v_h\|_{L^2(\Omega)} := \mathfrak{T}_1 + \mathfrak{T}_2.$$

By Assumption 26, $\mathfrak{T}_1 \lesssim h^2 \|v\|_{H^2(\Omega)}$. To estimate the second term, observe that for all $T \in \mathcal{T}_h$, all $F \in \mathcal{F}_T$ and all $\mathbf{x} \in \mathcal{P}_{T,F}$,

$$\xi_{\mathbf{v}_h}^{\mathbf{g}_F}|_{\mathcal{P}_{T,F}}(\mathbf{x}) = v_T + (\nabla \xi_{\mathbf{v}_h}^{\mathbf{g}_F})|_{\mathcal{P}_{T,F}} \cdot (\mathbf{x} - \mathbf{x}_T). \quad (55)$$

since, by construction, $\xi_{\mathbf{v}_h}^{\mathbf{g}_F}|_{\mathcal{P}_{T,F}}(\mathbf{x}_T) = v_T$. As a consequence, by virtue of (55), (17) and the triangular inequality, there holds

$$\mathfrak{T}_2^2 = \sum_{T \in \mathcal{T}_h} \sum_{F \in \mathcal{F}_T} \|w_h - v_h\|_{L^2(\mathcal{P}_{T,F})}^2 \leq h \sum_{T \in \mathcal{T}_h} \sum_{F \in \mathcal{F}_T} \|\nabla \xi_{\mathbf{v}_h}^{\mathbf{g}_F} - \nabla v_h\|_{[L^2(\mathcal{P}_{T,F})]^d}^2.$$

Proceeding as for the second term in the right-hand side of (53), we infer that $\mathfrak{T}_2 \lesssim h^2 \|v\|_{H^2(\Omega)}$. Therefore,

$$\|v - v_h\|_{L^2(\Omega)} \lesssim h^2 \|v\|_{H^2(\Omega)}. \quad (56)$$

To bound $|v - v_h|_{\mathbf{J}}$ and $\sum_{T \in \mathcal{T}_h} h_T \|\nabla(v)|_{T \cdot \mathbf{n}_F}\|_{L^2(\partial T)}$ use the continuous trace inequality (6) as in point (ii) of Theorem 24 together with (56).

A.3. Proof of Lemma 38

In the proof we abbreviate $a \lesssim b$ the inequality $a \leq Cb$ where C can depend on the mesh regularity parameters and on Ω but not on the meshsize h . By definition,

$$\|v_h\|^2 = \|\nabla_h v_h\|_{[L^2(\Omega)]^d}^2 + |v_h|_J^2 := \mathfrak{T}_1 + \mathfrak{T}_2.$$

(i) *Bound for \mathfrak{T}_1 .* The first term can be bounded as follows:

$$\mathfrak{T}_1 \lesssim \sum_{T \in \mathcal{T}_h} |T|_d \left| \frac{1}{|T|_d} \sum_{F \in \mathcal{F}_T} |F|_{d-1} (\langle v \rangle_T - \langle v \rangle_F) \mathbf{n}_{T,F} \right|^2 + \sum_{T \in \mathcal{T}_h} |T|_d \left| \frac{1}{|T|_d} \sum_{F \in \mathcal{F}_T} |F|_{d-1} (\langle v \rangle_F - \langle \xi_{\mathbf{v}_h}^{\mathbf{g}_F} \rangle_F) \mathbf{n}_{T,F} \right|^2.$$

Denote by $\mathfrak{T}_{1,1}$ and $\mathfrak{T}_{1,2}$ the addends in the right-hand side. Using the Cauchy–Schwarz inequality together with formula (10)

$$\mathfrak{T}_{1,1} \leq \sum_{T \in \mathcal{T}_h} \left\{ \left(\sum_{F \in \mathcal{F}_T} \frac{|F|_{d-1}}{|T|_d} d_{T,F} \right) \times \left(\sum_{F \in \mathcal{F}_T} d_{T,F}^{-1} \|\langle v \rangle_T - v\|_{L^2(F)}^2 \right) \right\} \lesssim d \sum_{T \in \mathcal{T}_h} \sum_{F \in \mathcal{F}_T} \frac{h_T}{d_{T,F}} \|v\|_{H^1(T)}^2 \lesssim \|v\|_{H^1(\Omega)}^2,$$

where we have used the classical estimate

$$\|\langle v \rangle_T - v\|_{L^2(F)} = \|\pi_h^0 v - v\|_{L^2(F)} \lesssim h_T^{1/2} |v|_{H^1(T)}. \quad (57)$$

As for the term $\mathfrak{T}_{1,2}$, repeated applications of the Cauchy–Schwarz inequality together with (10) yield

$$\mathfrak{T}_{1,2} \leq d \sum_{T \in \mathcal{T}_h} \sum_{F \in \mathcal{F}_T} \frac{1}{d_{T,F}} \|v - \xi_{\mathbf{v}_h}^{\mathbf{g}_F}\|_{L^2(F)}^2.$$

Since $\kappa = \nu \mathbf{1}_d$, for all $F \in \mathcal{F}_h^i$ and all $\mathbf{x} \in F$, $\xi_{\mathbf{v}_h}^{\mathbf{g}_F}(\mathbf{x})$ can be expressed as a linear combination of the values $\{\langle v \rangle_T\}_{T \in \mathcal{T}_g}$ with coefficients $\{\tau_T^F(\mathbf{x})\}_{T \in \mathcal{T}_g}$ equal to the barycentric coordinates of \mathbf{x} with respect to the simplex S_g (cf. Figure 1). Clearly, there exists $C_\Lambda < +\infty$ depending on Λ in Assumption 23 and on the mesh regularity parameters but independent of h such that $\max_{\mathbf{x} \in F} \max_{T \in \mathcal{T}_g} |\tau_T^F(\mathbf{x})| \leq C_\Lambda$. Hence, for all $F \in \mathcal{F}_h^i$, using the triangular inequality, the continuous trace inequality (6), and (57) we infer

$$\|v - \xi_{\mathbf{v}_h}^{\mathbf{g}_F}\|_{L^2(F)} \leq \sum_{T \in \mathcal{T}_g} \left(\max_{\mathbf{x} \in F} |\tau_T^F(\mathbf{x})| \right) \|v - \langle v \rangle_T\|_{L^2(F)} \lesssim C_\Lambda \sum_{T \in \mathcal{T}_g} \tau_T^F h_T^{1/2} |v|_{H^1(T)}. \quad (58)$$

On boundary faces $F \in \mathcal{F}_h^b$ both $\xi_{\mathbf{v}_h}^{\mathbf{g}_F}$ (by definition, cf. point (i) of §1.3) and v vanish, hence $\|v - \xi_{\mathbf{v}_h}^{\mathbf{g}_F}\|_{L^2(F)} = 0$. We conclude that $\mathfrak{T}_{1,2} \lesssim \|v\|_{H^1(\Omega)}^2$.

(ii) *Bound for \mathfrak{T}_2 .* Using the fact that $\llbracket v \rrbracket_F(\mathbf{x}) = 0$ for all $F \in \mathcal{F}_h$ and all $\mathbf{x} \in F$ together with the continuous trace inequality (6) and the bound (4) there holds

$$\begin{aligned} |v_h|_J^2 &= \sum_{F \in \mathcal{F}_h} \|\llbracket v_h - v \rrbracket\|_{L^2(F)}^2 \lesssim \sum_{F \in \mathcal{F}_h} \sum_{T \in \mathcal{F}_T} h_F^{-1} \|(v - v_h)|_T\|_{L^2(F)}^2 \\ &\lesssim \sum_{F \in \mathcal{F}_h} \sum_{T \in \mathcal{T}_F} h_T^{-2} \|v - v_h\|_{L^2(T)}^2 + \sum_{F \in \mathcal{F}_h} \sum_{T \in \mathcal{T}_F} \|\nabla(v - v_h)\|_{[L^2(T)]^d}^2 := \mathfrak{T}_{2,1} + \mathfrak{T}_{2,2}. \end{aligned}$$

To estimate the first term, use (17) together with the approximation properties of \mathcal{T}_h to infer, for all $T \in \mathcal{T}_h$,

$$\|v - v_h\|_{L^2(T)}^2 = \int_T (v_T + \mathfrak{G}_h(\mathbf{v}_h)|_{T^\cdot}(\mathbf{x} - \mathbf{x}_T) - v(\mathbf{x}))^2 \, d\mathbf{x} \lesssim \|\langle v \rangle_T - v\|_{L^2(T)}^2 + h_T \|\nabla v_h\|_{[L^2(T)]^d}^2.$$

Using point (i) it is inferred that $\mathfrak{T}_{2,1} \lesssim \|\nabla u\|_{[L^2(\Omega)]^d}^2$. To conclude the proof use again point (i) to estimate $\mathfrak{T}_{2,2} \lesssim \|\nabla u\|_{[L^2(\Omega)]^d}^2$.

REFERENCES

- [1] I. Aavatsmark, T. Barkve, Ø. Bøe, and T. Mannseth. Discretization on unstructured grids for inhomogeneous, anisotropic media, Part I: Derivation of the methods. *SIAM J. Sci. Comput.*, 19(5):1700–1716, 1998.
- [2] I. Aavatsmark, T. Barkve, Ø. Bøe, and T. Mannseth. Discretization on unstructured grids for inhomogeneous, anisotropic media, Part II: Discussion and numerical results. *SIAM J. Sci. Comput.*, 19(5):1717–1736, 1998.
- [3] I. Aavatsmark, G. T. Eigestad, B. T. Mallison, and J. M. Nordbotten. A compact multipoint flux approximation method with improved robustness. *Numer. Methods Partial Differ. Eq.*, 24:1329–1360, 2008.
- [4] L. Agélas, D. A. Di Pietro, and J. Droniou. The G method for heterogeneous anisotropic diffusion on general meshes. *M2AN Math. Model. Numer. Anal.*, 44(4):597–625, 2010. DOI: 10.1051/m2an/2010021.
- [5] L. Agélas, D. A. Di Pietro, R. Eymard, and R. Masson. An abstract analysis framework for nonconforming approximations of diffusion problems on general meshes. *IJFV*, 7(1):1–29, 2010.
- [6] D. N. Arnold. An interior penalty finite element method with discontinuous elements. *SIAM J. Numer. Anal.*, 19:742–760, 1982.
- [7] D. N. Arnold, F. Brezzi, B. Cockburn, and L. D. Marini. Unified analysis of discontinuous Galerkin methods for elliptic problems. *SIAM J. Numer. Anal.*, 39(5):1749–1779, 2002.
- [8] J.-P. Aubin. *Analyse fonctionnelle appliquée*. Presses Universitaires de France, Paris, 1987.
- [9] L. Botti and D. A. Di Pietro. A pressure-correction scheme for convection-dominated incompressible flows with discontinuous velocity and continuous pressure. *J. Comput. Phys.*, 230(3):572–585, 2011. DOI: 10.1016/j.jcp.2010.10.004.
- [10] S. C. Brenner and L. R. Scott. *The mathematical theory of finite element methods*, volume 15 of *Texts in Applied Mathematics*. Springer, New York, third edition, 2008.
- [11] F. Brezzi, K. Lipnikov, and M. Shashkov. Convergence of mimetic finite difference methods for diffusion problems on polyhedral meshes. *SIAM J. Numer. Anal.*, 45:1872–1896, 2005.
- [12] F. Brezzi, K. Lipnikov, and V. Simoncini. A family of mimetic finite difference methods on polygonal and polyhedral meshes. *M3AS*, 15:1533–1553, 2005.
- [13] F. Brezzi, G. Manzini, L. D. Marini, P. Pietra, and A. Russo. Discontinuous Galerkin approximations for elliptic problems. *Numer. Methods Partial Differential Equations*, 16(4):365–378, 2000.
- [14] A. Buffa and C. Ortner. Compact embeddings of broken Sobolev spaces and applications. *IMA J. Numer. Anal.*, 4(29):827–855, 2009.
- [15] E. Burman and A. Ern. Continuous interior penalty *hp*-finite element methods for advection and advection-diffusion equations. *Math. Comp.*, 76(259):1119–1140, 2007.
- [16] E. Burman and P. Zunino. A domain decomposition method for partial differential equations with non-negative form based on interior penalties. *SIAM J. Numer. Anal.*, 44:1612–1638, 2006.
- [17] Y. Cao, R. Helmig, and B. I. Wohlmuth. Geometrical interpretation of the multi-point flux approximation l-method. *Int. J. Numer. Methods Fluids*, (60):1173–1199, 2009.
- [18] P. G. Ciarlet. *The finite element method for elliptic problems*, volume 40 of *Classics in Applied Mathematics*. Society for Industrial and Applied Mathematics (SIAM), Philadelphia, PA, 2002. Reprint of the 1978 original [North-Holland, Amsterdam; MR0520174 (58 #25001)].
- [19] D. A. Di Pietro. Analysis of a discontinuous Galerkin approximation of the Stokes problem based on an artificial compressibility flux. *Int. J. Numer. Methods Fluids*, 55:793–813, 2007.
- [20] D. A. Di Pietro. Cell centered Galerkin methods. *C. R. Acad. Sci. Paris, Ser. I*, 348(1–2):31–34, 2010. DOI: 10.1016/j.crma.2009.11.012.
- [21] D. A. Di Pietro. A compact cell-centered Galerkin method with subgrid stabilization. *C. R. Acad. Sci. Paris, Ser. I*, 349(1–2):93–98, 2011. DOI: 10.1016/j.crma.2010.11.017.
- [22] D. A. Di Pietro and A. Ern. Discrete functional analysis tools for discontinuous Galerkin methods with application to the incompressible Navier–Stokes equations. *Math. Comp.*, 79:1303–1330, 2010. DOI: 10.1090/S0025-5718-10-02333-1.
- [23] D. A. Di Pietro and A. Ern. *Mathematical aspects of discontinuous Galerkin methods*. Mathematics & Applications. Springer-Verlag, Berlin, 2010. In press.
- [24] D. A. Di Pietro and A. Ern. Analysis of a discontinuous Galerkin method for heterogeneous diffusion problems with low-regularity solutions. Submitted. Preprint available at <http://hal.archives-ouvertes.fr/hal-00514387/fr/>, 2011.
- [25] D. A. Di Pietro, A. Ern, and J.-L. Guermond. Discontinuous Galerkin methods for anisotropic semi-definite diffusion with advection. *SIAM J. Numer. Anal.*, 46(2):805–831, 2008.
- [26] J. Droniou and R. Eymard. A mixed finite volume scheme for anisotropic diffusion problems on any grid. *Num. Math.*, 105(1):35–71, 2006.

- [27] J. Droniou, R. Eymard, T. Gallouët, and R. Herbin. A unified approach to mimetic finite difference, hybrid finite volume and mixed finite volume methods. *M3AS, Math. Models Methods Appl. Sci.*, 20(2):265–295, 2010.
- [28] M. G. Edwards and C. F. Rogers. A flux continuous scheme for the full tensor pressure equation. In *Prov. of the 4th European Conf. on the Mathematics of Oil Recovery*, volume D, Røros, Norway, 1994.
- [29] M. G. Edwards and C. F. Rogers. Finite volume discretization with imposed flux continuity for the general tensor pressure equation. *Comput. Geosci.*, 2:259–290, 1998.
- [30] A. Ern and J.-L. Guermond. *Theory and Practice of Finite Elements*, volume 159 of *Applied Mathematical Sciences*. Springer-Verlag, New York, NY, 2004.
- [31] E. Erturk, T. C. Corke, and C. Gökçöl. Numerical solutions of 2-D steady incompressible driven cavity flow at high Reynolds numbers. *Int. J. Num. Meth. Fluids*, 48:747–774, 2005.
- [32] R. Eymard, Th. Gallouët, and R. Herbin. *The Finite Volume Method*. Ph. Charlet and J.L. Lions eds, North Holland, 2000.
- [33] R. Eymard, Th. Gallouët, and R. Herbin. Discretization of heterogeneous and anisotropic diffusion problems on general nonconforming meshes SUSHI: a scheme using stabilization and hybrid interfaces. *IMA J. Numer. Anal.*, June 2009. DOI: 10.1093/imanum/drn084.
- [34] R. Eymard, R. Herbin, and J.-C. Latché. Convergence analysis of a colocated finite volume scheme for the incompressible Navier-Stokes equations on general 2D or 3D meshes. *SIAM J. Numer. Anal.*, 45(1):1–36, 2007.
- [35] P. Grisvard. *Singularities in Boundary Value Problems*. Masson, Paris, 1992.
- [36] B. Heinrich and K. Pietsch. Nitsche type mortaring for some elliptic problem with corner singularities. *Computing*, 68(3):217–238, 2002.
- [37] R. Herbin and F. Hubert. Benchmark on discretization schemes for anisotropic diffusion problems on general grids. In R. Eymard and J.-M. Hérard, editors, *Finite Volumes for Complex Applications V*, pages 659–692. John Wiley & Sons, 2008.
- [38] R. B. Kellogg. On the Poisson equation with intersecting interfaces. *Applicable Anal.*, 4:101–129, 1974/75. Collection of articles dedicated to Nikolai Ivanovich Muskhelishvili.
- [39] L. S. G. Kovasznay. Laminar flow behind a two-dimensional grid. *Proc. Camb. Philos. Soc.*, 44:58–62, 1948.
- [40] S. Nicaise and A.-M. Sändig. General interface problems. I, II. *Math. Methods Appl. Sci.*, 17(6):395–429, 431–450, 1994.
- [41] J. Nitsche. On Dirichlet problems using subspaces with nearly zero boundary conditions. In *The mathematical foundations of the finite element method with applications to partial differential equations (Proc. Sympos., Univ. Maryland, Baltimore, Md., 1972)*, pages 603–627. Academic Press, New York, 1972.
- [42] R. Stenberg. Mortaring by a method of J.A. Nitsche. In Idelsohn S.R., Oñate E., and Dvorkin E.N., editors, *Computational Mechanics: New trends and applications*, pages 1–6, Barcelona, Spain, 1998. Centro Internacional de Métodos Numéricos en Ingeniería.
- [43] R. Temam. *Navier-Stokes Equations*, volume 2 of *Studies in Mathematics and its Applications*. North-Holland Publishing Co., Amsterdam, revised edition, 1979. Theory and numerical analysis, With an appendix by F. Thomasset.