



HAL
open science

Does Dietary Restriction Reduce Life Span in Male Fruit-feeding Butterflies?

Freerk Molleman, Jimin Ding, Carol L. Boggs, James R. Carey, Malgorzata E. Arlet

► **To cite this version:**

Freerk Molleman, Jimin Ding, Carol L. Boggs, James R. Carey, Malgorzata E. Arlet. Does Dietary Restriction Reduce Life Span in Male Fruit-feeding Butterflies?. *Experimental Gerontology*, 2009, 44 (9), pp.601. 10.1016/j.exger.2009.06.008 . hal-00510619

HAL Id: hal-00510619

<https://hal.science/hal-00510619>

Submitted on 20 Aug 2010

HAL is a multi-disciplinary open access archive for the deposit and dissemination of scientific research documents, whether they are published or not. The documents may come from teaching and research institutions in France or abroad, or from public or private research centers.

L'archive ouverte pluridisciplinaire **HAL**, est destinée au dépôt et à la diffusion de documents scientifiques de niveau recherche, publiés ou non, émanant des établissements d'enseignement et de recherche français ou étrangers, des laboratoires publics ou privés.

Accepted Manuscript

Does Dietary Restriction Reduce Life Span in Male Fruit-feeding Butterflies?

Freerk Molleman, Jimin Ding, Carol L. Boggs, James R. Carey, Małgorzata E. Arlet

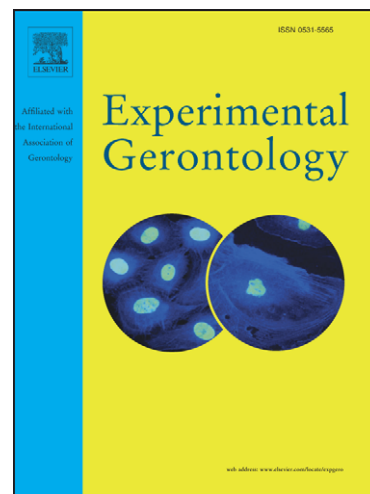
PII: S0531-5565(09)00121-1
DOI: [10.1016/j.exger.2009.06.008](https://doi.org/10.1016/j.exger.2009.06.008)
Reference: EXG 8622

To appear in: *Experimental Gerontology*

Received Date: 1 December 2008
Revised Date: 16 June 2009
Accepted Date: 25 June 2009

Please cite this article as: Molleman, F., Ding, J., Boggs, C.L., Carey, J.R., Arlet, M.E., Does Dietary Restriction Reduce Life Span in Male Fruit-feeding Butterflies?, *Experimental Gerontology* (2009), doi: [10.1016/j.exger.2009.06.008](https://doi.org/10.1016/j.exger.2009.06.008)

This is a PDF file of an unedited manuscript that has been accepted for publication. As a service to our customers we are providing this early version of the manuscript. The manuscript will undergo copyediting, typesetting, and review of the resulting proof before it is published in its final form. Please note that during the production process errors may be discovered which could affect the content, and all legal disclaimers that apply to the journal pertain.



1
2
3
4 **Does Dietary Restriction Reduce Life Span**
5
6
7 **in Male Fruit-feeding Butterflies?**
8
9

10
11
12 ¹ Freerk Molleman*

13
14 ² Jimin Ding

15
16
17 ³ Carol L. Boggs

18
19
20 ¹ James R. Carey

21
22 ^{1,4} Małgorzata E. Arlet

23
24
25
26
27 **1** Department of Entomology, University of California, Davis, One Shields Avenue, Davis, CA
28
29 95616, USA.

30
31 **2** Department of Mathematics, Cupples I, RM112A, Campus Box 1146, Washington
32
33 University in St. Louis, St. Louis, MO 63130, E-mail: jmding@math.wustl.edu

34
35
36 **3** Department of Biology, Stanford University, Stanford,
37
38 CA 94305–5020, USA

39
40
41 **4** Department of Anthropology, University of California, Davis, CA 95616, USA

42
43
44
45
46
47 **Corresponding author** fmolleman@ucdavis.edu, Tel.: +1 530 7544872, Fax: +1 530 752 1537

48
49 Present address: Institute of Ecology and Earth Sciences, University of Tartu, Vanemuise 46, EE-51014

50
51
52 Tartu, Estonia
53
54
55
56
57
58
59
60
61
62
63
64
65

1
2
3 **Abstract:** Male life history and resource allocation is not frequently studied in aging and
4
5 life span research. Here we verify that males of long-lived fruit-feeding butterfly species
6
7 have reduced longevity on restricted diets (Beck 2007 Oecologia), in contrast to the
8
9 common finding of longevity extension in dietary restriction experiments in *Drosophila*
10
11 and some other organisms. Males of some of the most long-lived species of fruit-feeding
12
13 butterflies were collected from Kibale Forest, Uganda, and kept on diets of either sugar or
14
15 mashed banana. Seven out of eight species had non-significantly longer life spans on
16
17 mashed banana. Data analysis using a time-varying Cox-model with species as
18
19 covariate showed that males had reduced survival on the sugar diet during the first 35
20
21 days of captive life, but the effect was absent or reversed at more advanced ages. These
22
23 results challenge the generality of dietary restriction as a way to extend life span in
24
25 animals. We argue that such studies on males are promising tools for better understanding
26
27 life history evolution and aging because males display a wider variety of tactics for
28
29 obtaining reproductive success than females.
30
31
32
33
34
35
36
37

38 **Key-words:** mating tactics, reproduction, time-varying Cox-model, wing-wear
39
40
41
42
43
44
45
46
47
48
49
50
51
52
53
54
55
56
57
58
59
60
61
62
63
64
65

Introduction

The majority of studies on effects of dietary restriction on longevity show life span extension under dietary restriction (Partridge et al., 2005), including model organisms ranging from yeasts (e.g., *Saccharomyces cerevisiae* Lin et al., 2002) to invertebrates (e.g., the nematode *Caenorhabditis elegans* Walker et al., 2005) and mammals (e.g., the rhesus monkey, *Macaca mulatta* Lane et al., 2004). Common belief that similar mechanisms can be inherent to humans stimulates intense scrutiny of the longevity benefits in model organisms (see recent review in Kennedy et al., 2007). However, recent studies that better represent the integrative nature of diet and resource allocation (using dietary restriction gradients, analyses of body composition, or measurement or control of food intake) show that these manipulations merely scratch the surface of the biological changes that are induced by diet (Carey et al., 2008a; Lee et al., 2008; Maklakov et al., 2008; Skorupa et al., 2008). Important model organisms in this field, such as lab rats, *Drosophila melanogaster* and Tephritid flies, have an evolutionary history on more or less complete diets.

The evolutionary history of Lepidoptera is probably dominated by adult diets consisting mainly of nectar sugars (Barth, 1991). Therefore, sugar solutions are regarded as the control to test for the effects of added amino acids or other nutrients on reproduction in this order. Usually, these additions do not affect the life span of female butterflies (Fischer and Fiedler, 2001; Hill and Pierce, 1989; Mevi-Schütz and Erhardt, 2003, 2005; Romeis and Wackers, 2002). A remarkable exception is found in the pollen feeding *Heliconius* butterflies where females deprived of pollen (which supplies them with amino acids for egg-production, O'Brien et al., 2003) live much shorter (Dunlap-

1
2
3 Pianka, 1979; Dunlap-Pianka et al., 1977; Gilbert, 1972). Thus, while *Heliconius* diet is
4
5 more complete like in *Drosophila*, dietary restriction via changes in diet composition had
6
7 the opposite effect from that seen in *Drosophila*.
8
9

10 Recent data suggest that the life histories of fruit-feeding butterflies may tend
11
12 towards reliance on sources of amino acids in the adult diet (Molleman et al., 2009), and
13
14 Beck and Fiedler (2009) summarized circumstantial evidence for amino acids in the adult
15
16 diet playing a crucial role in extended longevity in butterflies. Within this feeding guild,
17
18 small effects of amino acids on longevity were found in *B. anynana* where females being
19
20 additionally fed amino acids had lower survival rates compared to females fed on sugar
21
22 only or banana (Bauerfeind and Fischer, 2005; Molleman et al., 2008b). In the larger
23
24 *Charaxes fulvescens*, females fed banana lived shorter than those feeding on a sugar
25
26 solution, while addition of amino acids to the sugar solution did not significantly affect
27
28 longevity (Molleman et al., 2008a). Diet significantly affected mortality in captivity in a
29
30 time-dependent manner in female *Euphaedra* butterflies, where butterflies fed a sugar-
31
32 only diet initially survived better than those fed banana (see Table 1 and discussion for
33
34 more data and details; Molleman et al., 2009).
35
36
37
38
39

40
41 Studies on life span effects of caloric restriction in Lepidoptera are scarce. In the
42
43 butterfly *Speyeria mormonia*, adult survival was lower in both males and females
44
45 subjected to larval semi-starvation (Boggs and Freeman, 2005), while adult caloric
46
47 restriction had no effect on male or female life span but reduced female fecundity (Boggs
48
49 and Ross, 1993) and male rates of spermatophore formation (Boggs unpub.). Individuals
50
51 of *Jalmenus evagoras* attained the greatest longevity on a medium (25% wt/wt) sugar diet
52
53
54
55
56
57
58
59
60
61
62
63
64
65

1
2
3 (Hill and Pierce, 1989). In the fruit-feeding butterfly *Bicyclus anynana*, life span is
4
5 reduced under caloric restriction (Ferkau and Fischer, 2006; Molleman et al., 2008b).
6

7
8 Because information on life history of females is putatively most important for
9
10 demography and population biology, and insect female reproduction is more readily
11
12 measured in the laboratory (number of eggs), male life histories and resource allocation
13
14 strategies are less frequently studied. Males, on the other hand, have attracted much
15
16 attention from ethologists because of the wide range of mating tactics they can adopt (i.e.
17
18 Alcock, 1994; Arlet et al., 2008; Waltz and Wolf, 1984). Therefore, the study of male life
19
20 histories offers largely ignored opportunities to learn more about the evolution of life
21
22 histories and the interrelatedness of behavior and life history.
23
24

25
26 Beck (2007) compared survival in captivity on a sugar solution versus an amino
27
28 acid enriched sugar solution (butterflies also had access to salt) on Bornean wild-caught
29
30 rainforest butterflies and caught mainly males. He found that males of some long lived
31
32 butterfly species (including the fruit-feeding *Faunis gracilis* Morphinae) lived
33
34 significantly longer when they had access to amino acids. His sample sizes per species
35
36 and diet treatment varied between 5 and 19, while life spans ranged from 2 days to 4
37
38 weeks, and data were analyzed using two-tailed *t*-tests on log-transformed life span data.
39
40

41
42 For the one fruit-feeding butterfly species included (which responded
43
44 significantly to amino acids), there were only 5 individuals in each diet treatment (Beck,
45
46 2007). Therefore, we further test the hypothesis that long-lived fruit-feeding butterfly
47
48 males live longer when they have access to a diet that contains amino acids, using larger
49
50 sample sizes and more appropriate statistical tools.
51
52
53
54
55
56
57
58
59
60
61
62
63
64
65

Experimental methods

We used the two *Euphaedra* species with the longest life span records (Molleman et al., 2007) and several large *Charaxes* species (Table 1: Molleman et al., 2005a). Male butterflies were collected from Kibale National Park in April-May 2007 using baited traps, regardless of wing-wear, and kept singly in cages at Makerere University Biological Field Station. The locally manufactured cages were cylindrical (30 cm height, 21 cm width), made of fine mesh and 2 metal rings and fitted with a zipper. Butterflies and cages were numbered and hung in a room with four mesh covered windows (allowing ventilation and indirect sunlight) and a high (3-4 meters) wooden ceiling under a tin roof.

Wing length was measured using a ruler, and percent scale loss and wing surface loss were estimated and any missing appendages were recorded. Individuals were randomly assigned to either a mashed banana or a 10% (wt:vol) sugar solution diet. The mashed banana was prepared by slicing and mashing about 30 bananas in a clean bucket. Bananas contain about 1 gram of protein and 14 grams of sugar per 100 grams (NutritionData, 2008), and their sugar composition is very variable with about 50% sucrose, 25% glucose and 25% fructose (Molleman et al., 2008b). The sugar solution was made of locally obtained cane sugar and boiled rainwater. Banana was presented on a plastic dish and replaced twice a week and sugar solution was presented in a small vial mounted on a piece of cardboard, topped off daily and refreshed once every other week. Butterflies were generally observed to find the sugar solution quickly and to feed from the vial, but this was not verified for all individuals. Water was presented as wet tissue

1
2
3 paper on a plastic dish inside the cages. The tissue paper was moistened by spraying
4
5 water daily and was replaced weekly.
6

7
8 Differences with the method of Beck (2007) include: no restriction on butterfly
9
10 wear at capture, use of mashed banana instead of a sugar solution with amino acids, and
11
12 no salt was provided. By including more worn and thus presumably older individuals,
13
14 information on aging in the wild could potentially be gained (Carey et al., 2008b;
15
16 Molleman et al., 2008a; Molleman et al., 2009). Kibale National Park features
17
18 extraordinary high butterfly population densities (Molleman et al., 2006) that enabled us
19
20 to obtain our sample sizes in a matter of days for the *Euphaedra* included.
21
22
23
24
25

26 27 **Results**

28
29 Eight of 117 male butterflies died accidentally or escaped from cages and were treated as
30
31 censored observations. The median life span in captivity of the banana cohorts was
32
33 insignificantly longer than that of the sugar cohort in all but one species (*C. tiridates*)
34
35 which had very small sample sizes (7 out of 8 species; Table 1). In *E. medon*, *E. alacris*
36
37 and the *Charaxes* species combined, banana diet seemed beneficial in the early period of
38
39 capture but later seemed to reduce survival compared to the sugar diet (Figure 1). To
40
41 formally test this hypothesis, we pooled all data and constructed a time-varying Cox
42
43 model to fit the lifespan in captivity (Table 2). Banana diet was compared with sugar
44
45 using three parameters for three different periods: in the first 35 days in captivity, from
46
47 the 36th day to the 45th day, and afterwards. Species (with *Charaxes* pooled) were
48
49 adjusted as a covariate in the model.
50
51
52
53
54
55
56
57
58
59
60
61
62
63
64
65

1
2
3 The loss of wing scales, as a surrogate of age at capture (Ehrlich and Gilbert,
4
5 1973; Kemp, 2001), was also included as a predictor of life span in captivity. Both
6
7 'species' and 'loss of wing scales' satisfied the proportional hazards model assumptions.
8
9 During the first 35 days in captivity, the butterflies fed sugar had a higher risk of death
10
11 than those fed banana. More precisely, within this period the instant mortality of a
12
13 butterfly fed with banana is only 41.4% (exponent of -0.883 reported in table 2) of that of
14
15 a butterfly fed with sugar (with p-value=0.005 and 95% confidence interval 22.3%,
16
17 77.0%), if they belonged to the same species and had the same level of scale loss at
18
19 capture. During the second period in captivity, the two diet cohorts were not significantly
20
21 different. After day 45, the butterflies fed banana had lower survival probabilities than
22
23 those fed sugar (Table 2). A similar experiment on female butterflies found the opposite
24
25 effect for three species of *Euphaedra*: compared to female butterflies fed sugar, the
26
27 females fed banana had a lower survival rate at first and survived better after a month in
28
29 captivity (see Figure 1 for 2 *Euphaedra* species; Molleman et al., 2009). In contrast to
30
31 *Euphaedra*, the diet effect was similar for *Charaxes* males and females (Figure 1).
32
33 Different species also had significantly different male life spans in captivity regardless of
34
35 diet: *E. medon* lived significantly longer than *E. alacris*, but was not significantly
36
37 different from the *Charaxes* species pooled (table 2). Within the current sample, we did
38
39 not find that male butterflies with more scale loss lived significantly shorter (table 2),
40
41 which was the case for female butterflies of the same species (Molleman et al., 2009).
42
43 Although the estimated effect size of scale loss was similar (about 1.04) for both sexes,
44
45 the standard error for that estimate was much higher for males.
46
47
48
49
50
51
52
53
54
55
56
57
58
59
60
61
62
63
64
65

Discussion

Our results corroborate the suggestion of Beck (2007) that nutrients in fruit can phenotypically extend life span of male butterflies, although a negative effect on survival was noted later in life. Interestingly, such patterns have not been found in females of *Euphaedra* butterfly species (Molleman et al., 2009), or females and males of the small fruit-feeding butterfly *Bicyclus anynana* (Molleman et al., 2008b). Females of *Charaxes fulvescens* had higher survival rates on sugar based diets than on a (moistened) slice of banana (Molleman et al., 2008a). There are several important caveats for interpreting these results; (1) although we often observed butterflies feeding from the vials with sugar solution we did not verify whether each individual fed from the vial from the first day it entered captivity, while in the banana cohort this issue is not expected to play any role because these butterflies are attracted to the smell of bananas (Molleman et al., 2005c), (2) sticky mashed banana could affect mortality in other ways than through its nutritional value. Because butterflies can be trapped with their wings or other appendages in the sticky mashed banana, sugar fed males may have better survived better later on in captive life; (3) while females were mated and had the opportunity to lay eggs, males in our and Beck's (2007) experiment had no opportunity to mate. In some insect species mating has a male life span cost (i. e. Ferkau and Fischer, 2006; Martin and Hosken, 2004). However, this may not be an important issue here because it is likely that many male butterflies never obtain matings in nature (Beck, 2007; Boggs, 1979), moreover, mating does not confer a life span cost in monarch butterflies (Oberhauser, 1989). The differences between the sexes in *Euphaedra* could be explained by a survival cost of reproduction in females fed banana, not incurred by males.

1
2
3 Despite these caveats, we have the following evidence that male fruit-feeding
4 butterflies survive better when they feed on a more complete diet; 1) we found large
5 effects in particular for the mixed *Charaxes* group; 2) the results of Beck (2007) in which
6 the first caveat (males ability to find the vial) was avoided; and 3) the opposite diet
7 effects in females of *Euphaedra* species so that we would also need to assume a sex-
8 differential in the ability to find vials with sugar solution in this genus.
9

10
11
12 Beck (2007) pointed out the implications of his findings for butterfly ecology.
13 More insight into mechanisms may be gained if male-specific hypotheses were developed
14 on resource allocation and life history evolution, and if we had more insight into the
15 cause of death of old captive butterflies. A possible explanation for our finding is a
16 decrease in muscle power in males on poor diets, because this (and possibly decrease in
17 coordination), seems to precede death in insects in captivity. Examples of this include;
18 medflies start to spend time laying on their backs (supine behavior) several days before
19 they die (Papadopoulos et al., 2002); and *Drosophila* with artificially impaired legs
20 appeared to die because the missing of legs decreased their ability to escape from sticky
21 food (Carey et al., 2007).
22
23
24
25
26
27
28
29
30
31
32
33
34
35
36
37
38
39
40

41 Muscle mass and power output of insects can increase with adult nutrient intake,
42 or decrease with age or severity of microbial infections, as is well documented in
43 odonates (i. e. Anholt et al., 1991; Marden, 1998; Matsubara et al., 2005; Schilder, 2007).
44
45 The maintenance (or increase) of muscle power may be aided by nutrients in the adult
46 diet, and in particular amino acids that are important building blocks of muscle proteins.
47
48 This was found in the damselfly *Calopteryx maculata*, in which males fly away from
49 their stream after emergence to forage without harassment by other males and several
50
51
52
53
54
55
56
57
58
59
60
61
62
63
64
65

1
2
3 days later return to the stream after significantly increasing their muscle mass, to then
4
5 defend territories and obtain matings (Kirkton and Schultz, 2001).
6

7
8 When muscle power plays a role in survival, extension of life span through
9
10 dietary enrichment could be explained by allocation of nutrients in the adult diet to
11
12 muscles, or these butterflies having no need to resorb muscles to allocate amino acids to
13
14 other goals (Karlsson, 1994; Stjernholm and Karlsson, 2000). In contrast, females may
15
16 allocate these nutrients preferentially to eggs, and as a result life span of females is not
17
18 extended on a more complete diet. Interestingly, for *Bicyclus anynana*, no such male-
19
20 female differential response to diet was observed (Molleman et al., 2008b). In this genus,
21
22 males use pheromones to court females (Nieberding et al., 2007) and produce large
23
24 spermatophores (but see Ferkau and Fischer, 2006; Molleman et al., 2005a) that not every
25
26 male is able to produce on consecutive days (Lewis and Wedell, 2007; Molleman et al.,
27
28 2004). On the other hand, sexual flight dimorphism is slight or absent in this group
29
30 (Molleman et al., 2005a). The males of *B. anynana* may thus invest more in pheromone
31
32 and spermatophore production (even though they did not mate in that experiment) than in
33
34 muscles, resulting in a trade off between life span and reproduction (Boivin et al., 2005;
35
36 Lewis and Wedell, 2007) similar to females (Molleman et al., 2008b).
37
38
39
40
41
42

43 In summary, we hypothesize that (a) male reproductive success in these butterflies
44
45 is largely dependent on muscle power for male-male competition and courtship, so (b)
46
47 because investment in muscles increases competitive abilities in male-male interactions
48
49 and in courtship displays as well as ability to evade predators or free themselves from
50
51 sticky substances, investment in reproduction and longevity is synergistic in these males.
52
53
54
55 Similar principles may apply to other traits that enhance both competitive ability and
56
57
58
59
60
61
62
63
64
65

1
2
3 defense against predators, such as horns or antlers in ungulates and canine teeth in
4
5 primates and pigs. Because males also tend to display risky behavior (e. g. by spending a
6
7 larger proportion of their time flying in the case of butterflies, or defending their social
8
9 groups in mammals), the investments in these features may not be associated directly
10
11 with higher survival in the wild (i. e. Arlet and Isbell, 2009; Moore, 1987).
12
13

14
15 Amino acids in the adult diet could extend life span by supporting other systems
16
17 such as immune response (Boggs, 2009; Stoehr, 2007) as well. However, given the
18
19 differences found between males and females in their survival response, we searched for
20
21 processes that are more prevalent in or unique to males.
22
23

24
25 Over all, our data suggest that fruit-feeding provides butterflies with the
26
27 opportunity to ingest larger quantities of amino acids as adults, and this may have
28
29 enabled males to evolve mating strategies that require higher amino acid intakes (i. e.
30
31 intensive patrolling and territorial defense or amino acid enriched spermatophores) over a
32
33 longer life span. Longer reproductive life spans can be expected to be adaptive for males
34
35 in these tropical butterfly species because receptive females are available any time
36
37 (Gotthard et al., 2000) since they have overlapping generations, and females mate
38
39 multiply and probably in intervals (Molleman et al., 2005a).
40
41
42

43 Further experiments that (1) use sugar solution based diets (as in Beck 2007), (2)
44
45 include verification of feeding of each individual, (3) include longitudinal (time series of
46
47 individuals) mass (and if possible muscle mass) and activity measures, and (4) explore
48
49 dietary-restriction gradients (Carey et al., 2008a; Lee et al., 2008; Maklakov et al., 2008;
50
51 Skorupa et al., 2008), are needed to provide more definite answers on how nutrients
52
53 affect male survival patterns in captivity. In addition, the results for *Charaxes* need
54
55
56
57
58
59
60
61
62
63
64
65

1
2
3 further verification because the pooling of data from different species was statistically
4
5 convenient, but possibly not biologically appropriate. The crucial question of how
6
7 representative such captive studies are for life in the wild might then be approached by
8
9 measuring the nutritional and muscular state of butterflies in the wild using mark-
10
11 recapture or captive cohort protocols. This may be particularly important for these
12
13 tropical butterflies because the keeping conditions in cages may be poor, or they need
14
15 much space to exert their agile life-style and some species had to be excluded from my
16
17 captive studies for this reason (Kelson, 2008; Molleman et al., 2005b; Molleman et al.,
18
19 2007). In addition, Beck and Fiedler (2009) found a large discrepancy between the life
20
21 span data from captive and field-studies and assumed that poor keeping conditions in
22
23 caged tropical studies may be responsible for this finding.
24
25
26
27
28

29 That wing-damage was a not a significant predictor of remaining lifespan in
30
31 captivity may indicate that rating butterfly age by wear is not so reliable in these species
32
33 (see for further discussion Molleman et al., 2008a; Molleman et al., 2009).
34
35

36 Our results indicate that nutrient allocation strategies of males and females of the
37
38 same species can differ more from each other, than from individuals of the same sex of
39
40 distantly related species. Even though male insects are not considered important in
41
42 demography and do not provide the advantage of convenient longitudinal measurement
43
44 of an important aspect of reproductive success (egg production), they merit further
45
46 investigation. In particular, studies on males can aid in gaining a better understanding of
47
48 life history evolution because they display a wider variety of tactics for obtaining
49
50 reproductive success. Our results further challenge the generality of dietary restriction as
51
52 a way to extend life span in animals.
53
54
55
56
57
58
59
60
61
62
63
64
65

Acknowledgements

We thank Boniface Balyeganira, Harriet Kesiime, Christopher Aliganyira, Francis Katuramu Kaywanii, John Koojo, and Mary Alum, for their invaluable assistance in the field and in the laboratory and Francis Akoch Edigu for data entry. Thanks also to Shannon McCauley for putting us on the track of the dragonfly literature and Jan Beck and an anonymous reviewer for helpful comments on an earlier version of this manuscript. This study was conducted with kind permission of the Uganda Wildlife Authority (U.W.A.) and the Ugandan National Council for Science and Technology (U.N.C.S.T.). The funding was provided by the National Institute on Aging (PO1 AG022500-01 and PO1 AG608761-10 to JRC).

Tables:

Table 1: Summary statistics for male butterflies collected from Kibale Forest, Uganda with; sample sizes (number of censored observations in brackets), median life span in captivity in days and maximum life span. Data for con-specific females are given in italics for comparison but statistical details for females are treated elsewhere. The longest median and maximum life span for each species and sex is in bold. As banana fed males had higher survival rates during the first 35 days, median lifespan tended to be longer for the banana cohorts, but as older (>45 days) males showed the opposite effect, sugar fed males often had the longest captive life span for a species.

Species	N (censored)		Median Life Span		Maximum Life Span	
	sugar	banana	sugar	banana	sugar	Banana
<i>E. medon</i> ♂	17 (4)	20 (2)	26	44	123	86
♀	<i>18 (4)</i>	<i>21</i>	<i>31.5</i>	<i>39</i>	<i>59</i>	<i>80</i>
<i>E. alacris</i> ♂	23 (2)	20	22	39	64	112
♀	<i>19 (3)</i>	<i>23 (1)</i>	<i>29</i>	<i>32</i>	<i>50</i>	<i>83</i>
<i>Charaxes</i> comb. ♂	22	15	26	40	108	62
♀	<i>12 (2)</i>	<i>14</i>	<i>10</i>	<i>30</i>	<i>76</i>	<i>52</i>
<i>C. numenes</i> ♂	6	5	32.5	33	83	40
♀	<i>6 (1)</i>	<i>5</i>	<i>21.5</i>	<i>33</i>	<i>76</i>	<i>43</i>
<i>C. bipunctatus</i> ♂	3	1	27	58	108	58
♀	<i>2 (1)</i>	<i>3</i>	<i>3</i>	<i>39</i>	<i>3</i>	<i>52</i>
<i>C. tiridates</i> ♂	2	1	47	43	52	43
♀	<i>0</i>	<i>2</i>		<i>10.5</i>		<i>15</i>
<i>C. protoclea</i> ♂	5	4	25	43.5	51	62
♀	<i>2</i>	<i>2</i>	<i>22.5</i>	<i>26.5</i>	<i>40</i>	<i>30</i>
<i>C. Cynthia</i> ♂	4	2	22.5	25.5	63	45
♀	<i>1</i>	<i>0</i>	<i>45</i>		<i>45</i>	
<i>C. pollux</i> ♂	2	2	13	43	22	50
♀	<i>1</i>	<i>2</i>	<i>4</i>	<i>36</i>	<i>4</i>	<i>42</i>

Table 2: Parameter estimation in the time-varying Cox model with *E. medon* at zero scale loss as the baseline. Results are significant when the confidence interval does not contain 1. Note that time effects vary among species and are most pronounced in the pooled *Charaxes* species. When *Charaxes* are excluded, the <35days period still shows a significant diet effect, but the >45 days is no longer significant.

Variable	Parameter Estimation	Standard Error	p-value	Hazard Ratio	95% CI for Hazard Ratio
Diet <35 day	-0.883	0.317	0.005	0.414	[0.222, 0.769]
Diet36~45 day	0.206	0.379	0.586	1.299	[0.585, 2.581]
Diet >45 day	0.769	0.378	0.042	2.157	[1.028, 4.525]
<i>Charaxes</i>	0.384	0.250	0.124	1.468	[0.900, 2.395]
<i>E. alacris</i>	0.568	0.248	0.022	1.765	[1.085, 2.869]
Scale loss	0.035	0.026	0.188	1.035	[0.983, 1.090]

Males are from Mars

Figure:

Figure 1:

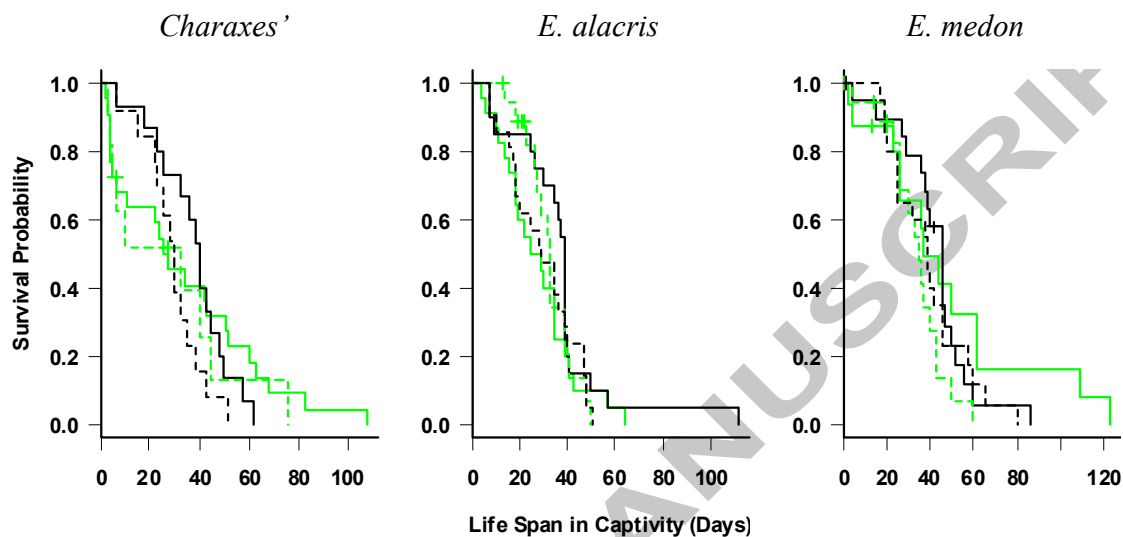


Figure 1. Kaplan-Meier Estimation of Survival Probability of a mix of large *Charaxes* species and two *Euphaedra* species. Life span of males are presented as solid lines, female butterflies are represented by dashed lines. The grey/green is for sugar and black is for banana diets. Note that the survival probability here is not adjusted for other covariates such as scale loss.

References

- Alcock, J., 1994. Alternative mate-locating tactics in *Chlosyne californica* (Lepidoptera, Nymphalidae). *Ethology* 16, 103-118.
- Anholt, B.R., Marden, J.H., Jenkins, D.M., 1991. Patterns of mass gain and sexual dimorphism in adult dragonflies (Insecta, Odonata) *Canadian Journal of Zoology-Revue Canadienne De Zoologie* 69, 1156-1163.
- Arlet, M.E., Molleman, F., Chapman, C.A., 2008. Mating tactics in male grey-cheeked mangabeys (*Lophocebus albigena*). *Ethology*.
- Arlet, M.E., Isbell, L.A., 2009. Variation in behavioral and hormonal responses of adult male gray-cheeked mangabeys (*Lophocebus albigena*) to crowned eagles (*Stephanoaetus coronatus*) in Kibale National Park, Uganda. *Behavioral Ecology and Sociobiology* 63, 491-499.
- Barth, F.G., 1991. *Insects and flowers: The biology of a partnership*. Princeton University Press, Princeton.
- Bauerfeind, S.S., Fischer, K., 2005. Effects of adult-derived carbohydrates, amino acids and micronutrients on female reproduction in a fruit-feeding butterfly. *Journal of Insect Physiology* 51, 545-554.
- Beck, J., 2007. The importance of amino acids in the adult diet of male tropical rainforest butterflies. *Oecologia* 151, 741-747.
- Beck, J., Fiedler, K., 2009. Adult life spans of butterflies (Lepidoptera: Papilionoidea plus Hesperioidea): broadscale contingencies with adult and larval traits in multi-species comparisons. *Biological Journal of the Linnean Society* 96, 166-184.
- Boggs, C.L., 1979. PhD thesis. Resource allocation and reproductive strategies in several heliconiine butterfly species. University of Texas, Austin.
- Boggs, C.L., Ross, C.L., 1993. The effect of adult food limitation on life-history traits in *Speyeria mormonia* (Lepidoptera, Nymphalidae). *Ecology* 74, 433-441.
- Boggs, C.L., Freeman, K.D., 2005. Larval food limitation in butterflies: effects on adult resource allocation and fitness. *Oecologia* 144, 353-361.
- Boggs, C.L., 2009. Understanding insect life histories and senescence through a resource allocation lens. *Functional Ecology* 23, 27-37.
- Boivin, G., Jacob, S., Damiens, D., 2005. Spermatogeny as a life-history index in parasitoid wasps. *Oecologia* 143, 198-202.
- Carey, J.R., Pinter-Wollman, N., Wyman, M., Müller, H.G., Molleman, F., Zhang, N., 2007. A search for principles of disability using experimental impairment of *Drosophila melanogaster*. *Experimental Gerontology* 42, 166-172.
- Carey, J.R., Harshman, L.G., Liedo, P., Muller, H.G., Wang, J.L., Zhang, Z., 2008a. Longevity-fertility trade-offs in the tephritid fruit fly, *Anastrepha ludens*, across dietary-restriction gradients. *Aging Cell* 7, 470-477.
- Carey, J.R., Papadopoulos, N.T., Müller, H.G., Katsoyannos, B.I., Kouloussis, N.A., Wang, J.L., Wachter, K., Yu, W., Liedo, P., 2008b. Age structure changes and extraordinary lifespan in wild medfly populations. *Aging Cell* 7, 426-437.
- Dunlap-Pianka, H.L., Boggs, C.L., Gilbert, L.E., 1977. Ovarian dynamics in Heliconiine butterflies: programmed senescence versus eternal youth. *Science* 197, 487-490.

- 1
2
3 Dunlap-Pianka, H.L., 1979. Ovarian dynamics in *Heliconius* butterflies: correlations
4 among daily oviposition rates, egg weights, and quantitative aspects of oogenesis. *Journal*
5 *of Insect Physiology* 25, 741-749.
- 6 Ehrlich, P.R., Gilbert, L.E., 1973. Population structure and dynamics of the tropical
7 butterfly *Heliconius ethilla*. *Biotropica* 5, 69-82.
- 8 Ferkau, C., Fischer, K., 2006. Costs of reproduction in male *Bicyclus anynana* and *Pieris*
9 *napi* butterflies: Effects of mating history and food limitation. *Ethology* 112, 1117-1127.
- 10 Fischer, K., Fiedler, K., 2001. Effects of adult feeding and temperature regime on
11 fecundity and longevity in the butterfly *Lycaena hippothoe* (Lycaenidae). *Journal of the*
12 *Lepidopterists' Society* 53, 91-95.
- 13 Gilbert, L.E., 1972. Pollen feeding and reproductive biology of *Heliconius* butterflies.
14 *Proceedings of the National Academy of Science, USA* 69, 1403-1407.
- 15 Gotthard, K., Nylin, S., Wiklund, C., 2000. Mating opportunity and the evolution of sex-
16 specific mortality rates in a butterfly. *Oecologia* 8, 36-43.
- 17 Hill, C.J., Pierce, N.E., 1989. The effect of adult diet on the biology of butterflies 1: the
18 common imperial blue, *Jalmenus evagoras*. *Oecologia* 81, 249-257.
- 19 Karlsson, B., 1994. Feeding-habits and change of body-composition with age in 3
20 Nymphalid butterfly species. *Oikos* 69, 224-230.
- 21 Kelson, R., 2008. Searching for Methuselah: butterfly longevity revisited. *Proceedings of*
22 *the invertebrates in education and conservation conference*, 51-57.
- 23 Kemp, D.J., 2001. Age-related site fidelity in the territorial butterfly *Hypolimnys bolina*
24 (L.) (Lepidoptera : Nymphalidae). *Australian Journal of Entomology* 4, 65-68.
- 25 Kennedy, B.K., Steffen, K.K., Kaeberlein, M., 2007. Ruminations on dietary restriction
26 and aging. *Cell Mol Life Sci* 64, 1323-8.
- 27 Kirkton, S.D., Schultz, T.D., 2001. Age-specific behavior and habitat selection of adult
28 male damselflies, *Calopteryx maculata* (Odonata : Calopterygidae). *Journal of Insect*
29 *Behavior* 14, 545-556.
- 30 Lane, M.A., Mattison, J.A., Roth, G.S., Brant, L.J., Ingram, D.K., 2004. Effects of long-
31 term diet restriction on aging and longevity in primates remain uncertain. *J Gerontol A*
32 *Biol Sci Med Sci* 59, 405-7.
- 33 Lee, K.P., Simpson, S.J., Clissold, F.J., Brooks, R., Ballard, J.W.O., Taylor, P.W., Soran,
34 N., Raubenheimer, D., 2008. Lifespan and reproduction in *Drosophila*: New insights
35 from nutritional geometry. *Proceedings of the National Academy of Sciences of the*
36 *United States of America* 105, 2498-2503.
- 37 Lewis, Z., Wedell, N., 2007. Effect of adult feeding on male mating behaviour in the
38 butterfly, *Bicyclus anynana* (Lepidoptera : Nymphalidae). *Journal of Insect Behavior* 20,
39 201-213.
- 40 Lin, S.J., Kaeberlein, M., Andalis, A.A., Sturtz, L.A., Defossez, P.A., Culotta, V.C., Fink,
41 G.R., Guarente, L., 2002. Calorie restriction extends *Saccharomyces cerevisiae* lifespan
42 by increasing respiration. *Nature* 418, 344-8.
- 43 Maklakov, A.A., Simpson, S.J., Zajitschek, F., Hall, M.D., Dessmann, J., Clissold, F.,
44 Raubenheimer, D., Bonduriansky, R., Brooks, R.C., 2008. Sex-specific fitness effects of
45 nutrient intake on reproduction and lifespan. *Current Biology* 18, 1062-1066.
- 46 Marden, J.H., 1998. From molecules to mating success: Integrative biology of muscle
47 maturation in a dragonfly. *American Zoologist* 38, 528-544.
- 48
49
50
51
52
53
54
55
56
57
58
59
60
61
62
63
64
65

- 1
2
3 Martin, O.Y., Hosken, D.J., 2004. Copulation reduces male but not female longevity in
4 *Saltella sphondylli* (Diptera : Sepsidae). *Journal of Evolutionary Biology*, 357-362.
- 5 Matsubara, K., Tojo, S., Suzuki, N., 2005. Age-related changes in flight muscle mass,
6 lipid reserves and flight capacity during adult maturation in males of the territorial
7 damselfly *Calopteryx atrata* (Odonata : Calopterygidae). *Zoological Science* 22, 587-
8 592.
- 9 Mevi-Schütz, J., Erhardt, A., 2003. Effects of nectar amino acids on fecundity of the wall
10 brown butterfly (*Lasiommata megera* L.). *Basic and Applied Ecology* 4, 413-421.
- 11 Mevi-Schütz, J., Erhardt, A., 2005. Amino acids in nectar enhance butterfly fecundity: a
12 long-awaited link. *American Naturalist* 165, 411-419.
- 13 Molleman, F., Zwaan, B.J., Brakefield, P.M., 2004. The effect of male sodium diet and
14 mating history on female reproduction in the puddling squinting bush brown *Bicyclus*
15 *anymana* (Lepidoptera). *Behavioral Ecology and Sociobiology* 56, 404-411.
- 16 Molleman, F., Grunsvan, R.H.A., Liefing, M., Zwaan, B.J., Brakefield, P.M., 2005a. Is
17 male puddling behaviour of tropical butterflies targeted at sodium for nuptial gifts or
18 activity? *Biological Journal of the Linnean Society* 86, 345-361.
- 19 Molleman, F., Krenn, H.W., Van Alphen, M.E., Brakefield, P.M., Devries, P.J., Zwaan,
20 B.J., 2005b. Food intake of fruit-feeding butterflies: evidence for adaptive variation in
21 proboscis morphology. *Biological Journal of the Linnean Society* 86, 333-343.
- 22 Molleman, F., van Alphen, M.E., Brakefield, P.M., Zwaan, B.J., 2005c. Preferences and
23 food quality of fruit-feeding butterflies in Kibale Forest, Uganda. *Biotropica* 37, 657-663.
- 24 Molleman, F., Kop, A., Brakefield, P.M., De Vries, P.J., Zwaan, B.J., 2006. Vertical and
25 temporal patterns of biodiversity of fruit-feeding butterflies in a tropical forest in Uganda.
26 *Biodiversity and Conservation* 15, 107-121.
- 27 Molleman, F., Zwaan, B.J., Brakefield, P.M., Carey, J.R., 2007. Extraordinary long life
28 spans in fruit-feeding butterflies can provide window on evolution of life span and aging.
29 *Experimental Gerontology* 42, 472-482.
- 30 Molleman, F., Ding, J., Wang, J.-L., Brakefield, P.M., Carey, J.R., Zwaan, B.J., 2008a.
31 Adult diet affects life span and reproduction of the fruit-feeding butterfly *Charaxes*
32 *fulvescens* *Entomologia Experimentalis et applicata* 129, 54-65.
- 33 Molleman, F., Ding, J., Wang, J.-L., Brakefield, P.M., Carey, J.R., Zwaan, B.J., 2008b.
34 Amino acid sources in the adult diet do not affect life span and fecundity in the fruit-
35 feeding butterfly *Bicyclus anymana*. *Ecological Entomology* 33, 429-438.
- 36 Molleman, F., Ding, J., Wang, J.-L., Carey, J.R., 2009. Nutrients in fruit increase fertility
37 in wild-caught females of long-lived *Euphaedra* species (Lepidoptera, Nymphalidae).
38 *The Journal of Insect Physiology* 55, 375-383.
- 39 Moore, S.D., 1987. Male-biased mortality in the butterfly *Euphydryas editha*: a novel
40 cost of mate acquisition. *American Naturalist* 130, 306-309.
- 41 Nieberding, C., Schneider, V., De Vos, H., Lassance, J.M., Lofstedt, C., Brakefield, P.M.,
42 2007. Role of male sexual pheromones in sexual selection in the African butterfly
43 *Bicyclus anymana*. *Journal of Insect Science* 7.
- 44 NutritionData, 2008. Nutrition facts: Know what you eat (USDA's national nutrient
45 database for standard reference) [http://www.nutritiondata.com/facts-C00001-
46 01c20Tm.html](http://www.nutritiondata.com/facts-C00001-01c20Tm.html).
- 47 O'Brien, D.M., Boggs, C.L., Fogel, M.L., 2003. Pollen feeding in the butterfly *Heliconius*
48 *charitonia*: isotopic evidence for essential amino acid transfer from pollen to eggs.
49
50
51
52
53
54
55
56
57
58
59
60
61
62
63
64
65

1
2
3 Proceedings of the Royal Society of London Series B-Biological Sciences 270, 2631-
4 2636.

5 Oberhauser, K.S., 1989. Effects of spermatophores on male and female monarch butterfly
6 reproductive success. Behavioral Ecology and Sociobiology 25, 237-246.

7 Papadopoulos, N.T., Carey, J.R., Katsoyannos, B.I., Kouloussis, N.A., Muller, H.G., Liu,
8 X.L., 2002. Supine behaviour predicts the time to death in male Mediterranean fruitflies
9 (*Ceratitis capitata*). Proceedings of the Royal Society of London Series B-Biological
10 Sciences 269, 1633-1637.

11 Partridge, L., Piper, M.D.W., Mair, W., 2005. Dietary restriction in *Drosophila*.
12 Mechanisms of Ageing and Development 126, 938-950.

13 Romeis, J., Wackers, F.L., 2002. Nutritional suitability of individual carbohydrates and
14 amino acids for adult *Pieris brassicae*. Physiological Entomology 9, 148-156.

15 Schilder, R.J., 2007. Parasites, proteomics and performance: effects of gregarine gut
16 parasites on dragonfly flight muscle composition and function. Journal of Experimental
17 Biology 210, 4298-4306.

18 Skorupa, D.A., Dervisevendic, A., Zwiener, J., Pletcher, S.D., 2008. Dietary composition
19 specifies consumption, obesity, and lifespan in *Drosophila melanogaster*. Aging Cell 7,
20 478-490.

21 Stjernholm, F., Karlsson, B., 2000. Nuptial gifts and the use of body resources for
22 reproduction in the green-veined white butterfly *Pieris napi*. Proceedings of the Royal
23 Society of London Series B-Biological Sciences 267, 807-811.

24 Stoehr, A.M., 2007. Inter- and intra-sexual variation in immune defence in the cabbage
25 white butterfly, *Pieris rapae* L. (Lepidoptera : Pieridae). Ecological Entomology 32, 188-
26 193.

27 Walker, G., Houthoofd, K., Vanfleteren, J.R., Gems, D., 2005. Dietary restriction in *C.*
28 *elegans*: from rate-of-living effects to nutrient sensing pathways. Mech Ageing Dev 126,
29 929-37.

30 Waltz, E.C., Wolf, L.L., 1984. By Jove! Why do alternative mating tactics assume so
31 many different forms? American Zoologist 24, 333-343.