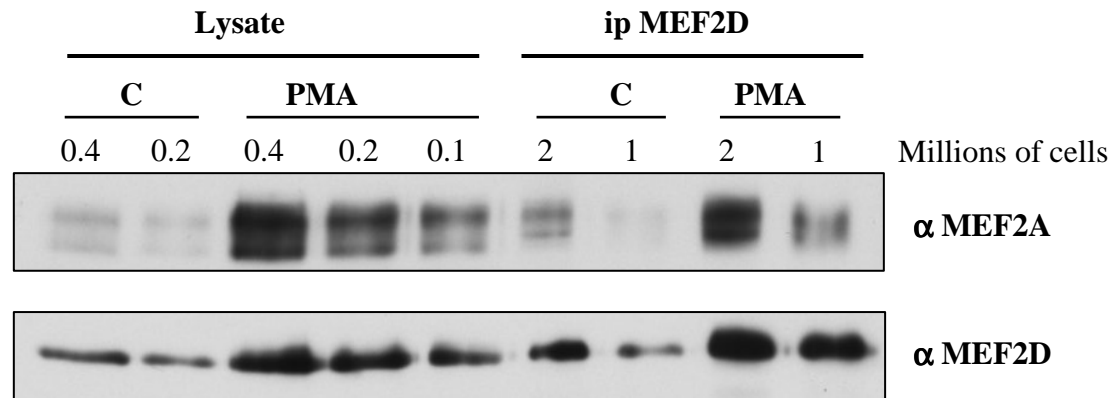
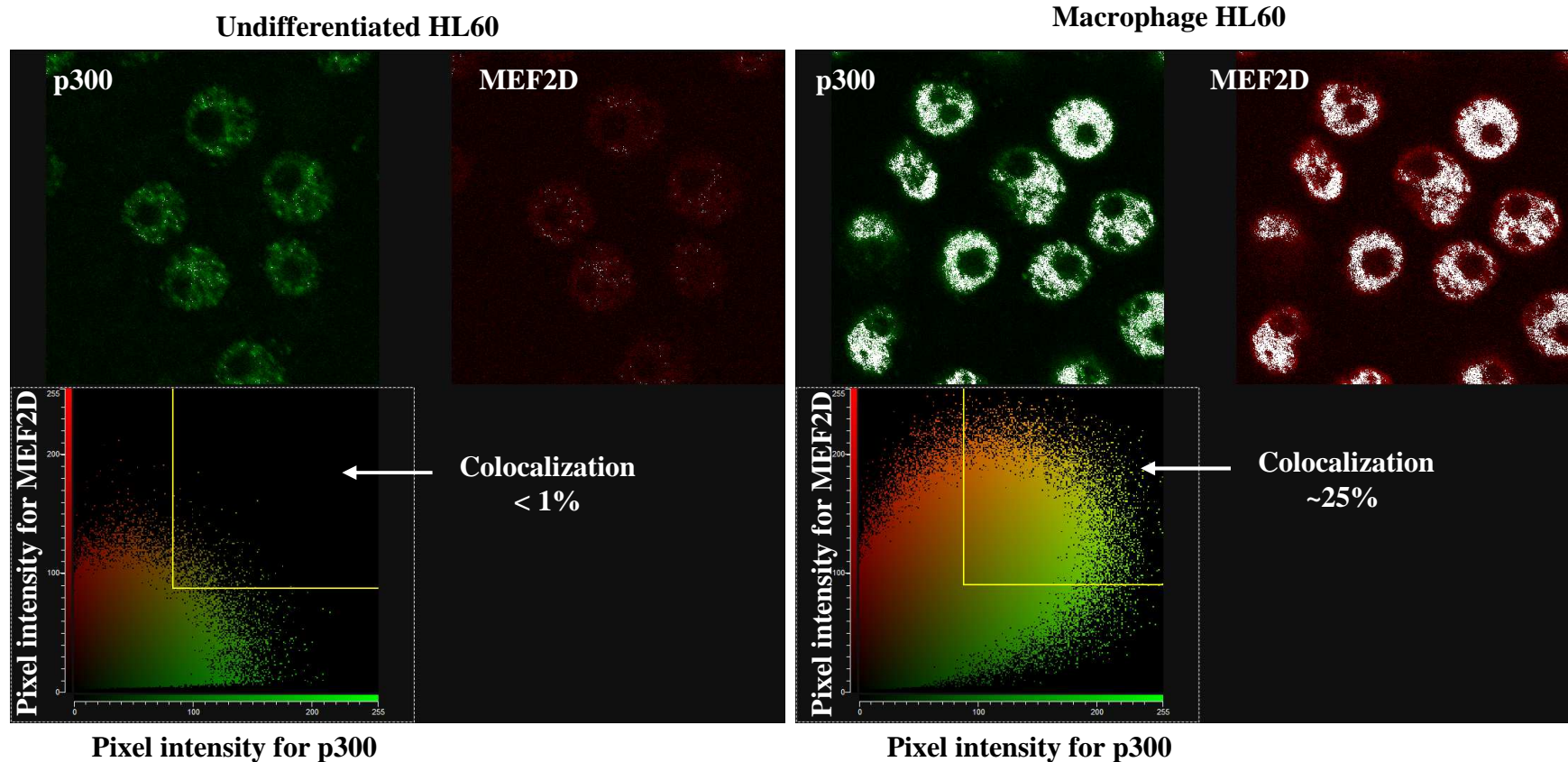


Supplemental Figure 1



Large amount of MEF2A/D heterodimers are found in HL60 cells. Cell lysates and immunoprecipitations were prepared as described in the Experimental section. Total cell extracts (lysate) from 0.4 and 0.2 x 10⁶ control cells, and from 0.4 and 0.2 and 0.1 x 10⁶ PMA-differentiated cells were analyzed by western blot. For the immunoprecipitated samples (ip MEF2D), the equivalent of 2 and 1 x 10⁶ cells were loaded. Quantification of the intensity of the different bands was performed with the Image J software. The western blot with anti-MEF2D detection allowed us to estimate that about 25% of the whole MEF2D of the cells was immunoprecipitated in these conditions. Identical values were found for both control and PMA-differentiated cells. With regards to MEF2A, we found that about 25% of MEF2A present in the total extract was co-immunoprecipitated with MEF2D, for control and differentiated cells as well. These data suggest that a large proportion of MEF2A protein interacted with MEF2D to form a heterocomplex in HL60 cells.

Supplemental Figure 2



Co-localization quantification for Fig. 6A: The co-localization quantifications were performed using the CF2D Software supplied with the Leica confocal microscope. Image acquisitions for undifferentiated HL60 and macrophage HL60 cells were performed with identical setting. The pixels with a mean intensity above 90 (range 0 to 255) were analyzed for potential colocalization (rectangle). Colocalized pixels are in white. In HL60 macrophages, we obtained a co-localization value of about 25% of the pixels corresponding to MEF2D and P300 staining. In undifferentiated HL60, the colocalization values for the pixels Mef2D and P300 was close to 1%. However, the low abundance of p300 and even more MEF2D and the low intensity signal in undifferentiated cells does not allow us to obtain precise data.