



HAL
open science

Turbulent velocity spectra in superfluid flows

Julien Salort, Christophe Baudet, Bernard Castaing, Benoît Chabaud,
François Daviaud, Thomas Didelot, Pantxo Diribarne, Bérengère Dubrulle,
Yves Gagne, Frédéric Gauthier, et al.

► **To cite this version:**

Julien Salort, Christophe Baudet, Bernard Castaing, Benoît Chabaud, François Daviaud, et al.. Turbulent velocity spectra in superfluid flows. *Physics of Fluids*, 2010, 22, pp.125102. 10.1063/1.3504375 . hal-00508872v2

HAL Id: hal-00508872

<https://hal.science/hal-00508872v2>

Submitted on 17 Dec 2010

HAL is a multi-disciplinary open access archive for the deposit and dissemination of scientific research documents, whether they are published or not. The documents may come from teaching and research institutions in France or abroad, or from public or private research centers.

L'archive ouverte pluridisciplinaire **HAL**, est destinée au dépôt et à la diffusion de documents scientifiques de niveau recherche, publiés ou non, émanant des établissements d'enseignement et de recherche français ou étrangers, des laboratoires publics ou privés.

Turbulent velocity spectra in superfluid flows

J. Salort,¹ C. Baudet,² B. Castaing,³ B. Chabaud,¹ F. Daviaud,⁴ T. Didelot,¹ P. Diribarne,^{1,3,4,5} B. Dubrulle,⁴ Y. Gagne,² F. Gauthier,¹ A. Girard,⁵ B. Hébral,¹ B. Rousset,⁵ P. Thibault,^{1,5} and P.-E. Roche¹

¹*Institut Néel, CNRS/UJF, 25 rue des Martyrs, BP 166, F-38042 Grenoble Cedex 9, France*

²*Laboratoire des Écoulements Géophysiques et Industriels, CNRS/UJF/INPG, F-38041 Grenoble Cedex 9, France*

³*École Normale Supérieure de Lyon, 46 Allée d'Italie, F-69364 Lyon Cedex 7, France*

⁴*DSM/IRAMIS/SPEC, CEA Saclay and CNRS (URA 2464), F-91191 Gif sur Yvette Cedex, France*

⁵*CEA-Grenoble/UJF, SBT, 17 rue des Martyrs, BP166, F-38054 Grenoble Cedex 9, France*

(Received 26 April 2010; accepted 17 September 2010; published online 13 December 2010)

We present velocity spectra measured in three cryogenic liquid ⁴He steady flows: grid and wake flows in a pressurized wind tunnel capable of achieving mean velocities up to 5 m/s at temperatures above and below the superfluid transition, down to 1.7 K, and a “chunk” turbulence flow at 1.55 K, capable of sustaining mean superfluid velocities up to 1.3 m/s. Depending on the flows, the stagnation pressure probes used for anemometry are resolving from one to two decades of the inertial regime of the turbulent cascade. We do not find any evidence that the second-order statistics of turbulence below the superfluid transition differ from the ones of classical turbulence, above the transition. © 2010 American Institute of Physics. [doi:10.1063/1.3504375]

I. INTRODUCTION

At atmospheric pressure and below approximately 4.2 K, ⁴He forms a liquid phase, called He I, whose dynamics can be described by the Navier–Stokes equation. When this liquid is cooled below $T_\lambda \approx 2.17$ K, it undergoes a phase transition, the “superfluid” transition. The new liquid phase is called He II. The hydrodynamics of this phase can be described with the so-called two-fluid model,¹ i.e., as a superposition of a normal component which behaves like a classical Navier–Stokes fluid with finite viscosity and a superfluid one with zero-viscosity and quantized vorticity. The ratio of superfluid density versus total density, ρ_s/ρ , increases from 0 to 1 when temperature decreases from T_λ to 0 K (typical values are given in Table I). The main goal of this paper is to compare the statistics of turbulent flows above and below this superfluid transition.

To achieve this goal, we need a local sensor that can work both above and below T_λ . Unfortunately, the most efficient sensors available can only operate in one of these phases, hot-wires for $T > T_\lambda$,^{2–5} and quantum vortex lines density probes for $T < T_\lambda$.^{6–10}

One alternative possibility is to use stagnation pressure probes. The operating principle is similar to Pitot or Prandtl tubes: the velocity difference between the tip of the probe where the flow is stopped and the average flow velocity produces a pressure head $\frac{1}{2}\rho v^2$. This effect is inertial, and therefore such probes can be used as well in He I as in He II.

The first successful attempt to resolve velocity fluctuation in liquid helium with a stagnation pressure probe was reported in 1998 by Maurer and Tabeling¹¹ in a turbulent Von Kármán flow both above and below T_λ . The velocity spectra in He II were found very similar to those in He I. Specifically they found a $f^{-5/3}$ scaling over 1.5 decade of frequency. This pioneering result provides the first experimental evidence

that superfluid can undergo a Kolmogorov-like turbulent cascade. Yet, there has been no published experimental confirmation of this result.¹² For reference, we point that numerical works have reported spectrum compatible with a $-5/3$ scaling at finite temperature^{13,14} and in the zero temperature limit.^{15–17} The reader can report to the review of Vinen and Niemela¹⁸ for an introduction to quantum turbulence.

This paper presents an extension of this experimental result in different geometries. We report studies of stagnation pressure measurements both in He I and He II for three kinds of flow: grid turbulence, wake near field flow and “chunk” flow with two objectives in mind: (i) to check that the experiment when done in a classical fluid like He I reproduces expected statistical signatures for the turbulence and (ii) to compare the statistical signatures for flows in He I with those in He II.

II. PROBES AND ACQUISITION SYSTEM

In this paper, we report measurements done with four stagnation pressure probes, hereafter called ①, ②, ③, and ④. They were used in two wind tunnels (described below), noted TSF and Néel for convenience. Two types of pressure transducers were used, Kulite cryogenic ultraminiature CCQ-062 pressure transducers for probes ① and ③ and a Fujikura Ltd. FPS-51F-15PA pressure transducer^{19,20} for probes ② and ④. Both transducers are based on piezoresistive gauges.

They have been customized by wrapping them into specifically designed noses and supports in order to get a smaller resolution. The tips of the noses are made of cupronickel capillaries, of typical diameters 0.4×0.6 mm for probes ① and ③ and 0.6×0.9 mm for probes ② and ④ (see Fig. 1). The nozzle sizing is optimized for space and time resolution. In first approximation, the nozzle acts as a pipe

TABLE I. Some physical properties of cryogenic helium for temperature and pressure values relevant to our experiments.

P (Pa)	T (K)	ρ (kg/m ³)	η (μ Pa s)	ρ_s/ρ
Pressurized He I				
1.1×10^5	2.6	146.6	3.374	0
1.1×10^5	2.3	148.0	2.980	0
Pressurized He II				
1.1×10^5	2.17	148.2	2.611	0
1.1×10^5	2.1	147.7	1.971	0.23
1.1×10^5	2.0	147.5	1.555	0.42
1.1×10^5	1.9	147.3	1.389	0.56
1.1×10^5	1.7	147.1	1.359	0.76
Saturated He II				
597	1.55	145.3	1.380	0.86

and the dead volume inside the Kulite CCQ-062 outfit as a cavity. This introduces a Helmholtz resonance for probes ① and ③. For probes ② and ④, the dead volume is negligible but the pipe total length is typically 1 cm, leading to an organ

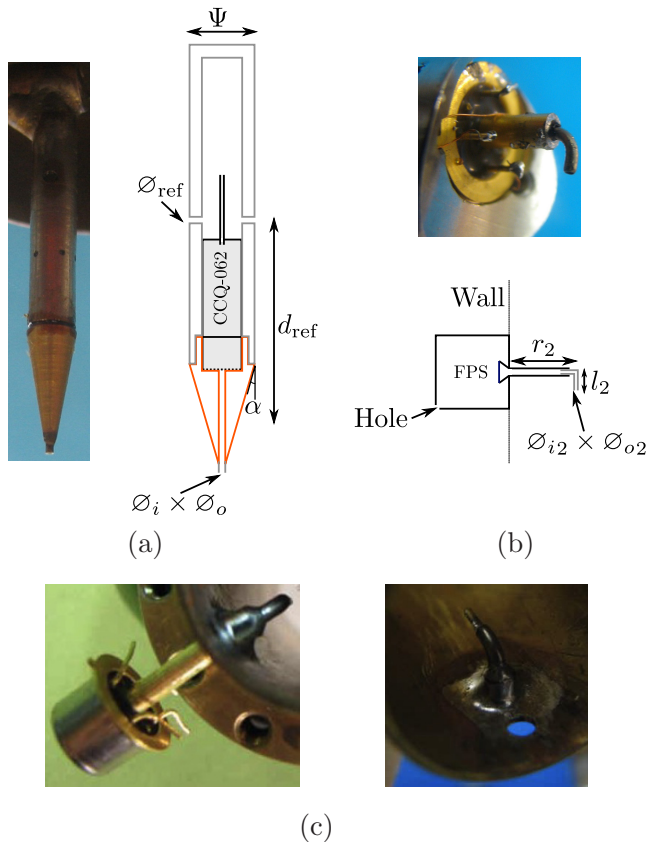


FIG. 1. (Color online) *TSF wind tunnel probes*: (a) probe ① or ③; (b) probe ②. All parts are tightly assembled. For probes ① and ③, the pressure reference is realized by holes on the outer CuNi cylinder at a distance d_{ref} from the tip; for probe ②, the pressure reference is taken in a region where the flow is quiescent with a controlled leak on the back of the shell. *Néel wind tunnel probe*: (c) Probe ④ is essentially similar to probe ② except that it works as an absolute pressure probe, without hole in its shell.

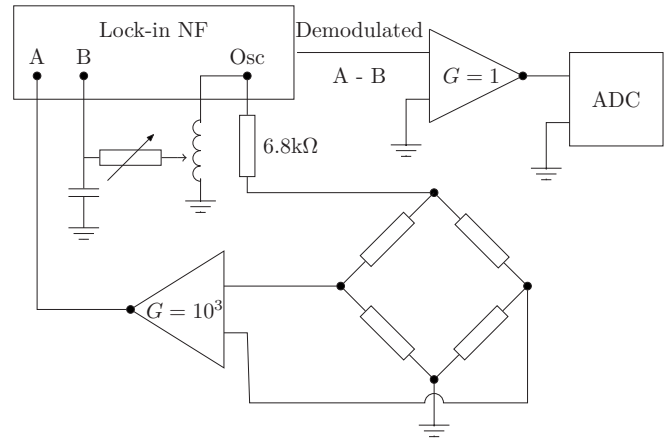


FIG. 2. Electronic diagram of the acquisition system for probes ① and ②. The pressure transducer is represented as a resistor bridge. The imbalance is preamplified by a low-noise preamplifier (JFET, typical noise input voltage $1 \text{ nV}/\sqrt{\text{Hz}}$). The mean value of the imbalance signal is subtracted using an inductor bridge and an adjustable RC filter to compensate for the phase shift.

pipe resonance. For probes ①, ②, and ③, the resonance frequency is found around 2 kHz, which means that, for a mean flow velocity of 1 m/s, we cannot resolve structures smaller than 1 mm typically. For probe ④, the resonance frequency is below 1 kHz.

The time and space cutoff of all the probes therefore occurs simultaneously.

Probes ①, ②, and ④ have been polarized with a sinusoidal voltage. The output signal is demodulated by a lock-in amplifier. The polarization frequency is in the range 7–8 kHz for probes ① and ② and in the range 10–20 kHz for probe ④. This modulation/demodulation technique was chosen to improve the signal to noise ratio. To make sure that no artifact bias was introduced by this method, probe ③ was polarized more simply using dc batteries. The full acquisition schematics is given on Fig. 2. The various properties of the probes are summarized in Table II.

III. STAGNATION PRESSURE PROBES USED AS ANEMOMETERS

Following the analysis of Maurer and Tabeling,¹¹ the first order term of the signal fluctuations measured by a stagnation pressure probe is linear with the local velocity fluctuations, like with Pitot tubes. However, if the turbulence intensity is too large, the second-order corrections coming from static pressure fluctuations and quadratic velocity fluctuations lead to significant bias (see the Appendix for more details).

TABLE II. Summary of the main properties of the probes used in our experiments.

Probe	①	②	③	④
Transducer	Kulite	Fujikura	Kulite	Fujikura
Nose diameter (mm)	0.4×0.6	0.6×0.9	0.4×0.6	0.6×0.9
Resonance (kHz)	~ 2	~ 2	~ 2	< 1
Sensing	ac	ac	dc	ac

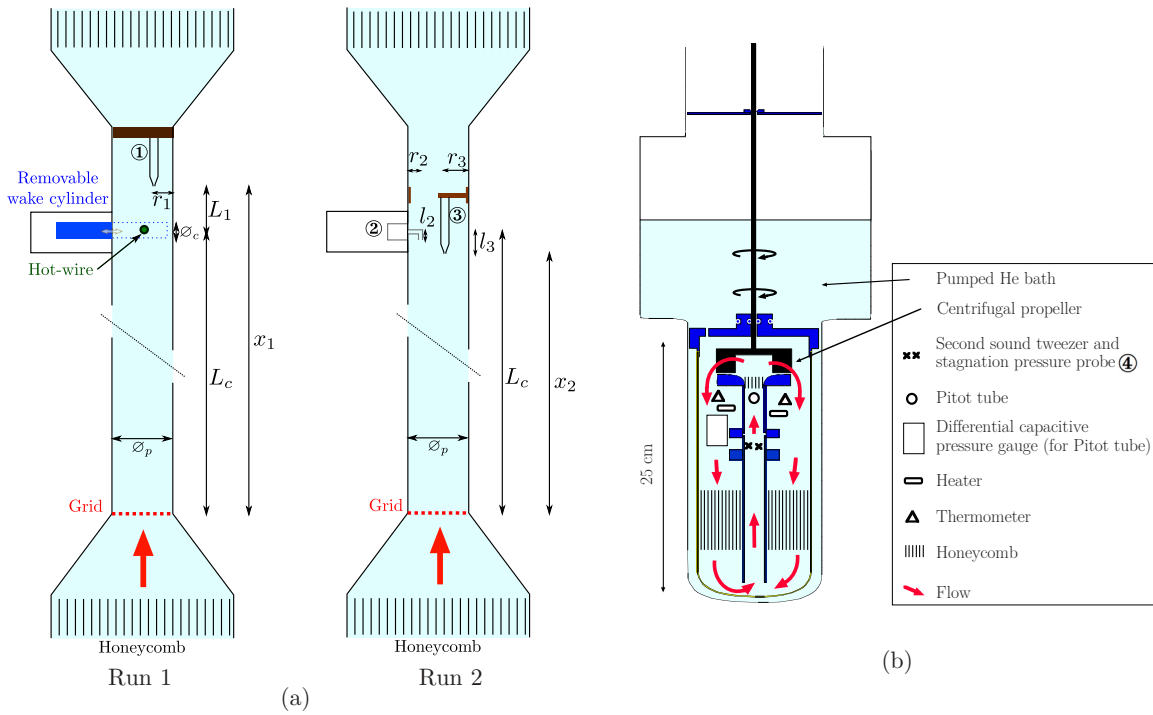


FIG. 3. (Color online) (a) *TSF wind tunnel*: Schematics of the test section and the probe locations for runs 1 and 2. For run 1, a removable cylinder can be inserted across the flow at a distance L_c downstream the grid. It was originally designed to protect a hot-wire during the transient of the system. The stagnation pressure probe ①, located at a distance $L_c + L_1$ downstream the grid can either measure grid turbulence when the cylinder is removed or wake turbulence when the cylinder is inserted in the flow. Probe ① was not positioned on the pipe axis to avoid the wake of the hot-wire. For run 2, two stagnation pressure probes (② and ③) are available. (b) *Néel wind tunnel*: Schematics and picture of the test section and location of stagnation pressure probe ④.

Maurer and Tabeling's measurements were done using a stagnation pressure probe inside a turbulent Von Kármán flow. The piezoelectric probe they used was not sensitive to the dc but they could measure the turbulence intensity τ in the range 20%–30% in a previous measurement.²¹ According to Table V, in such conditions, the second-order corrections represent more than $\sim 20\%$ of the measured signal. Additionally, events with flow-probe angle of attack exceeding, for example, 15° are likely to occur at such high τ , which introduces some additional bias on the signal interpretation. To confirm and extend Maurer and Tabeling's result, our systematic study includes a flow with a turbulence intensity smaller than 2%, with second-order correction smaller than 3%. A grid flow was chosen because its turbulence is well known in classical fluids.

The calibration of the probes is done *in situ*, by plotting the mean output voltage versus $\rho \langle v \rangle^2$ where $\langle v \rangle$ is the mean velocity in the channel. In the TSF wind tunnel, $\langle v \rangle$ is determined by enthalpy balance across a heater. In the Néel wind

tunnel, a Pitot tube located downstream from the probe (see Fig. 3) provides a measurement of the flow mean velocity.

IV. HOMOGENEOUS AND ISOTROPIC TURBULENCE: THE TSF GRID FLOW

In this section, we present grid turbulence measurements in the pressurized TSF wind tunnel (see Fig. 3). Details about the TSF experiment have been given in previous papers.^{22,23} The main dimensions are recalled in Table III. The turbulence intensity in this type of flow is typically a decade smaller than turbulent Von Kármán flows, which ensures that the fluctuating signal from the stagnation pressure probes corresponds to velocity fluctuations with less than 3% correction. Furthermore, the pressure is maintained far above the saturated vapor pressure, this ensures that no bubble can appear within the flow. However, one drawback of low turbulence intensity is that the fluctuating signal on the probe is lower, therefore the signal to noise ratio is smaller.

TABLE III. Main dimensions of the TSF wind tunnel (see Figs. 3 and 1 for the definition of the notations).

\varnothing_p	27.2 mm	L_1	61 mm	l_2	3 mm	l_3	9 mm
\varnothing_c	15.3 mm	r_1	8 mm	r_2	7 mm	r_3	11 mm
L	565 mm	\varnothing_{i1}	0.4 mm	\varnothing_{i2}	0.6 mm	\varnothing_{i3}	0.4 mm
L_c	479 mm	\varnothing_{o1}	0.6 mm	\varnothing_{o2}	0.9 mm	\varnothing_{o3}	0.6 mm
M	3.9 mm/mesh	n_M	7 mesh/diam	\varnothing_{ref}	0.5 mm	d_{ref}	15 mm
Ψ	3.5 mm	α	15°				

In this paper, we discuss two runs with different probe positions inside the test section (shown on Fig. 3), with mean velocities ranging from 0.4 to 5 m/s and temperatures from 1.7 and 2.6 K. The Reynolds number based on the grid mesh size M , $Re_M = M\langle v \rangle / \nu$ is between 10^5 and 2×10^6 in He I. In He II, several Reynolds numbers can be defined. Using the quantum of circulation $\kappa = h/m \approx 9.9 \times 10^{-8}$ m²/s (h is the Planck constant and m is the mass of the ⁴He atom), we find $Re_\kappa = M\langle v \rangle / \kappa$ between 1.5×10^4 and 2×10^5 .

The probe location downstream the grid is $x/M = 138 \pm 2$ for the first run and $x/M = 121 \pm 2$ for the second run. Hence we can derive the turbulence intensity and the transverse integral scale L_g expected in He I using Comte-Bellot and Corrsin's fits,²⁴

$$\langle v \rangle^2 / \langle v'^2 \rangle = 15 \left(\frac{x}{M} - \frac{x_0}{M} \right)^{1.2}, \quad (1)$$

$$L_g/M = 0.06(x/M - x_0/M)^{0.35}, \quad (2)$$

where x_0/M is the virtual origin ranging from 2 to 4.

The expected turbulence intensity in the TSF loop is therefore between 1.3% and 1.5% and the expected transverse integral scale L_g lies in the range 1.2–1.3 mm. Alternative prefactors and exponents in Eqs. (1) and (2) have been proposed in the literature. Using those reported by Mohamed and LaRue,²⁵ we find a turbulence intensity between 0.92% and 1.7% for $x/M = 121$ (run 2) and 0.84% and 1.6% for $x/M = 138$ (run 1). In any cases, the turbulence intensity is small enough to safely assume that the measured signal is not polluted by static pressure fluctuations nor by large angle of attack between the flow and the probe.

The velocity power spectra $\phi(f)$ are given on Fig. 4, where the velocity spectral density over the time interval $[0, t_{\max}]$, $\phi(f)$, is defined as

$$\phi(f) = \left| \sqrt{\frac{2}{t_{\max}}} \int_0^{t_{\max}} v'(t) e^{-2i\pi ft} dt \right|^2. \quad (3)$$

The normalization is such that

$$\int_0^{+\infty} \phi(f) df = \langle v'^2 \rangle. \quad (4)$$

The actual spectra are calculated using the Welch method on windows of 2^{15} data points. The total recording time is 7 min for most time series but we also recorded some 15 and 30 min long ones, with a sampling frequency of 9.77 or 19.5 kHz and a high-order antialiasing filter. In He I, a Kolmogorov scaling $\phi(f) \sim f^{-5/3}$ is expected in the inertial range of the turbulent cascade. Above the corner frequency around 100–200 Hz, our measurements are compatible with such a scaling although the limited resolved range calls for caution. On this representation, the measurements in He II seem indistinguishable from those in He I, which suggests that the turbulence second-order statistics in the upper part of the inertial cascade are the same above and below the superfluid transition. However, this representation is not well suited for detailed comparisons because of the peaks of noise. In the following, we present more quantitative characteristics of

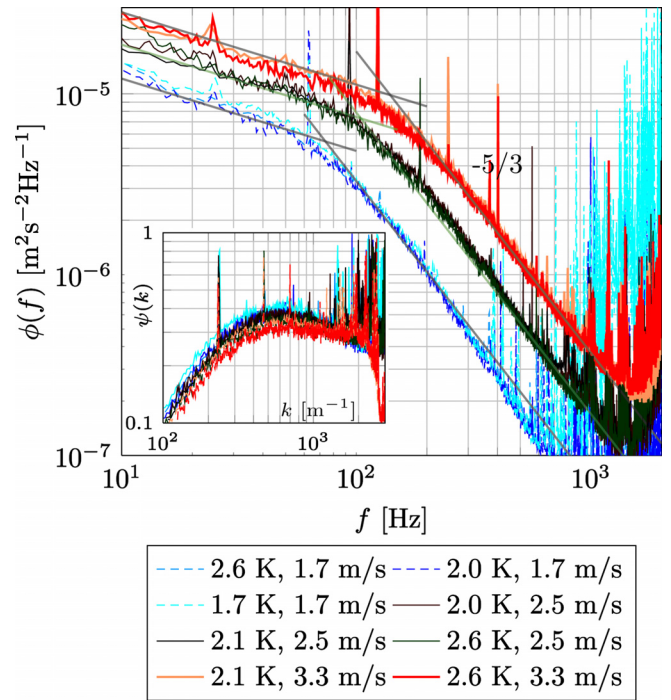


FIG. 4. (Color online) Grid turbulence velocity spectra acquired by probe ① for three different mean velocities both above and below the superfluid transition. The Helmholtz resonance frequency is found near 2 kHz. The solid lines are visual aids to find the corner frequency, f_0 . The high-frequency lines show the $-5/3$ scaling. Inset: Compensated grid flow energy spectrum for various conditions both above and below the superfluid transition (see text). The value of the plateau provides an estimate for the one-dimensional Kolmogorov constant C_k for both He I and He II grid turbulence.

this spectra to refine the comparison of flows in He I and He II, i.e., below and above the superfluid transition.

We first examine the integral scale of the flow and the turbulence intensity. Both can be calculated from the spectra. The values obtained above the superfluid transition can be compared against Comte-Bellot and Corrsin's fits for classical grid flows.

The longitudinal integral scale in the flow L_l can be defined as

$$L_l = \frac{1}{\langle v'^2 \rangle} \int_0^{+\infty} \langle v'(0)v'(r) \rangle dr = \frac{\pi}{2} \frac{\phi(0)}{\int_0^{+\infty} \phi(k) dk}, \quad (5)$$

where the wavenumber k and the energy spectrum in wavenumber space $\phi(k)$ are defined as

$$\begin{cases} k = 2\pi f / \langle v \rangle \\ \phi(k) = \frac{\langle v \rangle}{2\pi} \phi(f). \end{cases} \quad (6)$$

For an ideal flat spectrum below k_0 and a $k^{-5/3}$ scaling above k_0 , we have

$$\int_0^{+\infty} \phi(k) dk = \frac{5}{2} \phi(0) k_0, \quad (7)$$

and therefore, one can derive the observed longitudinal integral scale as $L_l = \langle v \rangle / 10f_0$ and then, assuming homogeneous

TABLE IV. Some integral scale measurements derived from the velocity power spectra obtained in run 1 (probe ①) and run 2 (probe ②). For comparison, Comte–Bellot and Corrsin predictions gives $L_l=2.6$ mm for run 1 and $L_l=2.5$ mm for run 2.

Run	x (mm)	$\langle v \rangle$ (m/s)	f_0 (Hz)	L_l (mm)	L_g (mm)
He I and He II identical within error bars					
1	540	3.3	140 ± 25	2.4 ± 0.4	1.2 ± 0.2
1	540	2.5	105 ± 25	2.4 ± 0.8	1.2 ± 0.4
1	540	1.7	74 ± 25	2.3 ± 0.9	1.15 ± 0.45
He I only					
2	470	4.2	154 ± 50	2.7 ± 1.0	1.3 ± 0.5
2	470	2.5	98 ± 40	2.5 ± 1.2	1.25 ± 0.6

isotropic turbulence, the transverse integral scale L_g as $L_g=L_l/2$.

In our measurements, the low-frequency part of the spectrum is not flat down to a few tens of millihertz. Those small fluctuations only represents some 0.1% of the mean velocity and therefore make little change on the value of the turbulence intensity. They may come from small and slow fluctuations of the forcing mean velocity rather than from grid-generated turbulences. Therefore, it is necessary to choose a criterion to determine the corner frequency f_0 . We define it as the frequency of the crossing of two power laws: one with a scaling $f^{-5/3}$ fitted on the spectrum (inertial cascade) and one with an arbitrary scaling $f^{-0.4}$ which roughly reproduces the resolved low-frequency part of the spectrum. Values of corner frequencies and derived integral scales for each spectrum are summarized in Table IV, including error estimates. There was more noise during run 2, which explains the larger uncertainty on f_0 .

To get the rms velocity fluctuations, or the turbulence intensity, $\tau = \sqrt{\langle v'^2 \rangle} / \langle v \rangle$, we calculate the area below $\phi(f)$ in a linear plot, or in practice, the area below $f \cdot \phi(f)$ in a semi-log plot, to have a better estimate of the uncertainties (see inset of Fig. 5). We also ignored the contribution of the low-frequency increase since it is not expected to come from the turbulence cascade.

For run 1 ($x_1=540$ mm), the measured turbulence intensity is found to be $\tau_1=(1.3 \pm 0.1)\%$; for run 2 ($x_2=470$ mm), $\tau_2=(1.75 \pm 0.15)\%$ (see Fig. 5). The longitudinal integral scale is around $L_l=2.5$ mm for both runs, the error bars make it impossible to resolve the variation of L_l between these two positions. As a first result, we find that both quantities are consistent with Comte–Bellot and Corrsin fits for classical grid flow. Besides, and more importantly, we find that both the integral scale and the turbulence intensity remain unchanged above and below the superfluid transition, within relative experimental uncertainties of 8% for τ and 20% for L_l .

From τ_1 and τ_2 , we can estimate directly the turbulence dissipation rate ϵ from the turbulent kinetic energy flux at position x_1 and x_2 ,

$$\epsilon \approx \langle v \rangle^3 \left| \frac{\partial \tau^2}{\partial x} \right| \approx \langle v \rangle^3 \frac{(\tau_2^2 - \tau_1^2)}{(x_2 - x_1)}. \quad (8)$$

From the measured values, we can get $\partial \tau^2 / \partial x \approx 0.0021 \text{ m}^{-1}$. This is in good agreement, with less precise alternative estimation,²⁶

$$\epsilon \approx 1.1 \frac{\langle v'^2 \rangle^{3/2}}{L_g} = 1.1 \langle v \rangle^3 \frac{\tau^3}{L_g}, \quad (9)$$

where $1.1 \tau^3 / L_g$ lies in the range $0.0012\text{--}0.0045 \text{ m}^{-1}$

From ϵ and assuming isotropic and homogeneous turbulence, we can compute the turbulence microscale λ in He I,

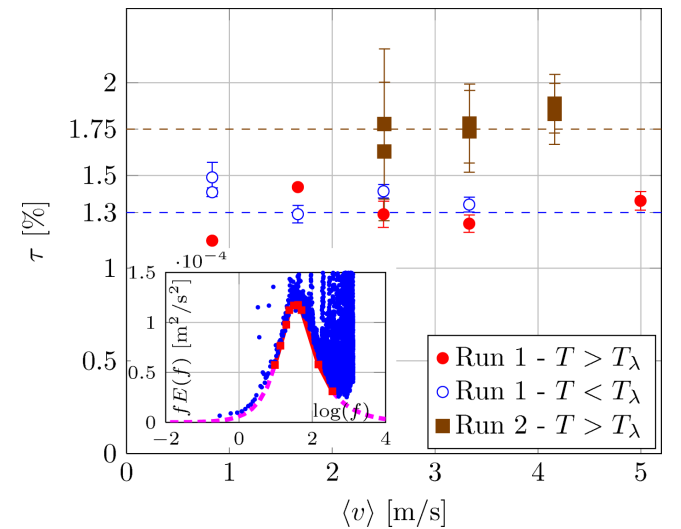


FIG. 5. (Color online) Turbulence intensity τ measured for the two grid flow runs in the TSF wind tunnel for various velocities and temperatures, computed using the integral of the energy spectrum. Inset: Estimation of the envelope of the energy spectrum. The area below the envelope is the energy of the velocity fluctuations. The dots are experimental data points, the solid line is the estimated envelope below the spectrum, and the dashed line is the extrapolated spectrum (flat spectrum in the low-frequency limit and $f^{-5/3}$ scaling in the high-frequency limit). The energy from the low-frequency $f^{-0.4}$ increase is not taken in the turbulent energy estimate. However, this makes a relative difference smaller than a few percents in the final estimate.

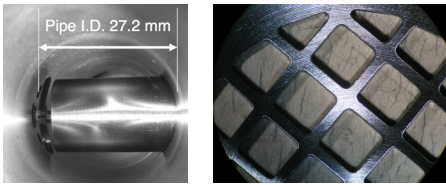


FIG. 6. (Color online) Left: picture of the removable cylinder in the TSF wind tunnel. The angle between the probe and the axis of the pipe is 17° . Right: picture of the grid.

$$\epsilon = 15\nu \frac{\langle v'^2 \rangle}{\lambda^2}. \quad (10)$$

The derived values of λ lies in the range $70\text{--}230 \mu\text{m}$ and $R_\lambda = \lambda \sqrt{\langle v'^2 \rangle} / \nu$ in the range $60\text{--}250$. We find $R_\lambda \geq 100$ for most of our experimental conditions, which is consistent with the assumption of developed grid turbulence above the superfluid transition. Therefore, we expect the inertial range energy spectrum to roughly follow the Kolmogorov prediction,

$$\phi(k) = C_k \epsilon^{2/3} k^{-5/3}. \quad (11)$$

On the inset of Fig. 4, we plot the compensated energy spectrum,

$$\psi(k) = \epsilon^{-2/3} k^{5/3} \phi(k). \quad (12)$$

From the value of the ‘‘plateau,’’ we can derive an estimate for the Kolmogorov constant, C_k , in both He I and He II. We find values in the range $C_k = 0.3\text{--}0.4$. This is a one-dimensional Kolmogorov constant, which can be related to the three-dimensional Kolmogorov constant C_{3d} assuming local isotropy,

$$C_{3d} = \frac{55}{18} C_k. \quad (13)$$

We find that the three-dimensional Kolmogorov constant lies in the range $0.9\text{--}1.2$.

Previous normal fluid grid flow experiments^{27–30} have reported measured values of the Kolmogorov constant scattered³¹ around $C_{3d} = 1.5$, in the window $C_{3d} = 1.0\text{--}1.74$ (i.e., $C_k = 0.33\text{--}0.57$). The value that we find is close to the smaller values reported in the literature. Our emphasis will not be on the actual value that we have measured. Indeed, the latter can be affected by systematic errors, such as systematic bias on the probe calibration. However, it is quite remarkable that our measure of the Kolmogorov constant in He II down to 2.0 K coincides with the value measured in He I within 30% relative error margin.

V. HIGH TURBULENCE INTENSITY FLOWS

We report two sets of high turbulence intensity flows: measurements done in the TSF wind tunnel in the near wake of a cylinder [see schematics of run 1 on Fig. 3(a)] and measurements done in the Néel wind tunnel, sketched on Fig. 3(c) and described in more details elsewhere.¹⁰ The main advantage of such flows is a better signal-to-noise ratio. However, the turbulence is less homogeneous and less isotropic, especially in the near wake flow.

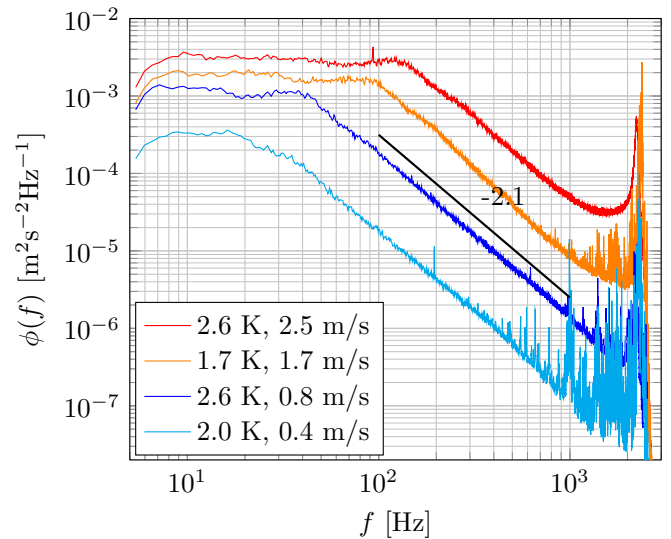


FIG. 7. (Color online) Velocity spectra in the near wake of a cylinder in the TSF wind tunnel both above and below the superfluid transition with mean velocity increasing from bottom to top. The high-frequency peak near 2 kHz is the sensor Helmholtz frequency.

A. Near wake flow

The cylinder used in the TSF wind tunnel was originally designed to protect a hot-wire during the filling of the cryogenic loop, in particular, to avoid droplets from colliding with the wire. Therefore, the dimensions are not designed to produce fully developed wake turbulence. As shown on Table III, the wake cylinder diameter ϕ_c is 15.3 mm for a pipe diameter ϕ_p of 27.2 mm, leading to a significant wall confinement. Besides, the cylinder length is slightly smaller than the pipe diameter as shown on Fig. 6. The dimensionless distance between the cylinder axis and the sensor L_1/ϕ_c is 4.0 ± 0.3 . The cylinder Reynolds number $\phi_c \langle v \rangle / \nu$ falls in the range $3 \times 10^5\text{--}2 \times 10^6$, where $\langle v \rangle$ is estimated upstream (or downstream) from the cylinder, and not on the constriction where $\langle v \rangle$ is larger. In a less confined geometry, the Strouhal number,

$$St = \frac{f_v \phi_c}{\langle v \rangle}, \quad (14)$$

where f_v is the frequency of vortex shedding, is undefined at such Re in classical fluids.³² Finally, we point that this flow geometry can lead to large angle of attack on the probe.

Figure 7 shows spectra in the near wake of the cylinder in both He I and He II. No sharp Strouhal peak is visible, either above or below the superfluid transition. The slope is steeper than $-5/3$. One possible explanation is that the spectral distribution of energy right after the obstacle is concentrated at the largest scales, and by the time the probe is reached, it has not developed yet into the Kolmogorov cascade. As another possible explanation, we also point out that velocity spectra in strongly inhomogeneous classical flows, in particular, near a stable vortex, are known³³ to scale such as $f^{-\alpha}$, with α in the range $1.65\text{--}2.50$. In any case, our result shows that the indistinguishability between He I and

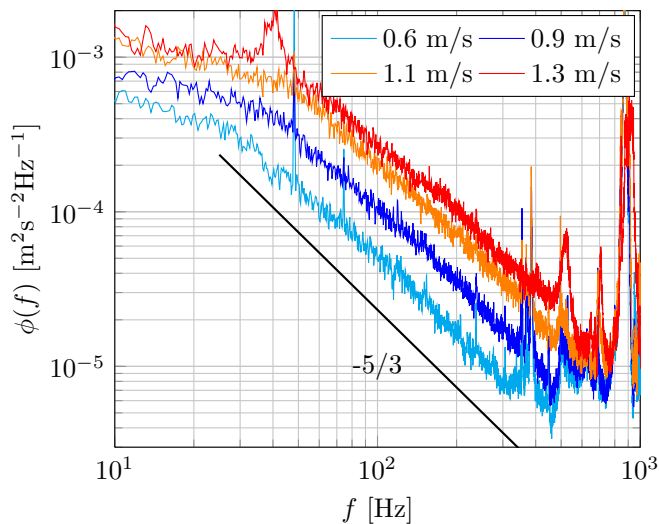


FIG. 8. (Color online) Velocity spectra for $T=1.55$ K in the Néel wind tunnel for four mean velocities below the superfluid transition. The low-frequency corners give an estimate of the longitudinal integral scale $L_g=2$ cm.

He II does not require an equilibrium state in the sense of Kolmogorov.

B. Chunk turbulence

The Néel wind tunnel is placed in a saturated liquid helium bath [see Fig. 3(c)]. The temperature is controlled mainly by the bath pressure and fine-tuned by a temperature regulator. The data discussed here are obtained at $T=1.55$ K, which corresponds to a superfluid fraction $\rho_s/\rho \approx 86\%$. Above the superfluid transition, bubbles are likely to appear in saturated baths. Therefore, we only report measurements below the superfluid transition, where the absence of thermal gradients prevents the forming of bubbles. The turbulence is generated by a continuously powered centrifugal pump and probed by stagnation pressure probe ④ and a local quantum vortex lines density probes in a 23 mm diameter, 250 mm long brass pipe, located upstream from the pump. The analyses of the quantum vortex line density results are discussed in a previous paper.^{10,34} The useful range of velocity is 0.25–1.3 m/s. The typical turbulence intensity is roughly constant in this range of parameters. Its value is $(18 \pm 1)\%$ if we choose to remove the energy that comes from the low-frequency variation of the mean velocity, like we did in the previous parts; or in the range 25%–35%, if we choose to keep all the measured energy, like was done in the previous paper.¹⁰ The superfluid Reynolds number $Re_\kappa = \varnothing V / \kappa$ falls in the range $6 \times 10^4 - 3 \times 10^5$.

Figure 8 shows spectra obtained in the Néel wind tunnel in He II. They show one decade of $f^{-\alpha}$ scaling, with $\alpha=1.55-1.69$. This is compatible with a Kolmogorov $-5/3$ turbulent cascade with a relative experimental error bar of less than 7% on the exponent. The compensated spectra are shown on Fig. 9 using $\epsilon_{\text{est}} = \langle v'^2 \rangle^{3/2} / L_g$ and $L_g=1$ cm. From the value of the plateau, we find a one-dimensional Kolmogorov constant around 0.5. Although the “chunky” as-

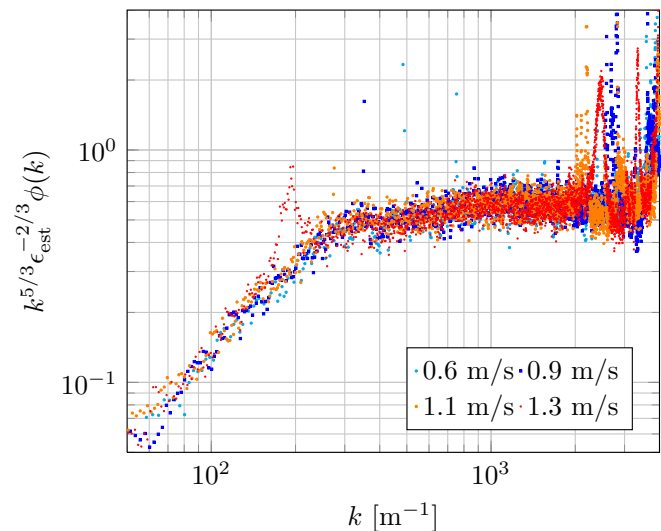


FIG. 9. (Color online) Same data as Fig. 8 plotted in a compensated fashion (see text).

pect of the flow prevents to speculate on its value, we note that it is in good agreement with values in a classical flows.

VI. CONCLUSIONS AND PERSPECTIVES

We have done systematic superfluid velocity measurements in three different highly turbulent flows. The upper inertial range of the turbulent cascade was resolved with various anemometers based on stagnation pressure probes. We found that the second-order statistics of the superfluid velocity fluctuations does not seem to differ from those of classical turbulence down to the precision of our measurements.

It is worth pointing that nonconventional velocity statistics have been recently reported in superfluid flows, both in an experimental³⁵ and a numerical³⁶ study. These studies were conducted at a much lower effective Reynolds number and the probing of the flow velocity was done at a scale where quantum effects are prevalent. In the present work, the characteristic length scale of quantum effect is much lower than the probe resolution. For example, in the Néel flow, the typical distance between two neighboring quantum vorticities is a few microns,³⁴ to be compared with the probe resolution of 1 mm typically.

To go further into the physics of quantum turbulence, it would be necessary to resolve the small scales of a high-Reynolds number flow. To do this at given Reynolds number, one should either increase the cutoff scale by scaling up the experiment or decrease the size of the probe. However, it is delicate to reduce the size of stagnation pressure probes below, say 200 μm . One alternative is to design new types of probes—for example, adapting cantilever-based anemometers³⁷ to low temperatures.

ACKNOWLEDGMENTS

This work would not have been possible without the precious help and support of M. Bon Mardion, A. Forgeas, P. Roussel, and J.-M. Poncet (SBT) and G. Garde, A. Girardin,

C. Guttin, and Ph. Gandit (Institut Néel) nor without the financial support of the ANR (Grant No. ANR-05-BLAN-0316, “TSF”) and the Région Rhône-Alpes.

We thank also R. Kaiser for his contribution during data acquisition, T. Haruyama (KEK, Japan) for support with several pressure transducers, and L. Chevillard and F. Chillà (ENS Lyon) for fruitful discussions.

APPENDIX: DERIVATION OF THE STAGNATION PRESSURE SIGNAL

We consider the total pressure $U(t)$ measured by a stagnation pressure probe in a classical incompressible fluid,

$$U(t) = \frac{1}{2}\rho v(t)^2 + P(t), \quad (\text{A1})$$

where ρ is the density of the fluid, $v(t)$ the local velocity, and $P(t)$ the local static pressure. Equation (A1) can be rewritten using Reynolds decomposition $v(t) = \langle v \rangle + v'(t)$ and $P(t) = \langle P \rangle + P'(t)$,

$$U(t) = \frac{1}{2}\rho \langle v \rangle^2 + \langle P \rangle + \rho \langle v \rangle v'(t) + P'(t) + \frac{1}{2}\rho v'(t)^2. \quad (\text{A2})$$

We recall the definition of the turbulence intensity τ ,

$$\tau = \frac{\sqrt{\langle v'^2 \rangle}}{\langle v \rangle}. \quad (\text{A3})$$

The typical magnitude of the static pressure fluctuation P' can be estimated for isotropic and homogeneous turbulence,^{38–40}

$$\frac{\sqrt{\langle P'^2 \rangle}}{\frac{1}{2}\rho \langle v'^2 \rangle} \approx 1.4. \quad (\text{A4})$$

Therefore, the terms of Eq. (A2) can be divided in orders of τ ,

$$\begin{cases} U_0 = \frac{1}{2}\rho \langle v \rangle^2 + \langle P \rangle = \mathcal{O}(1) \\ U_1(t) = \rho \langle v \rangle v'(t) = \mathcal{O}(\tau) \\ U_2(t) = P'(t) + \frac{1}{2}\rho v'(t)^2 = \mathcal{O}(\tau^2), \end{cases} \quad (\text{A5})$$

where U_0 is a constant offset, used only for calibrating the probe, $U_1(t)$ is the signal of interest, and $U_2(t)$ is the second-order corrective term, considered as a spurious signal for stagnation pressure probes. The relative weight of U_2 versus U_1 can be estimated versus the turbulent intensity τ ,

TABLE V. Typical relative weight of each term contributing to the signal measured by a stagnation pressure probe for various turbulence intensity τ using estimate (A6).

τ (%)	$\rho \langle v \rangle v'(t)$ (%)	$P'(t)$ (%)	$\frac{1}{2}\rho v'(t)^2$ (%)
1	98.8	0.7	0.5
2	97.6	1.4	1
10	89.2	6.3	4.5
20	80.6	11.3	8.1
30	73.5	15.5	11.0

$$U_1(t) = \rho \langle v \rangle v'(t) \sim \rho \langle v \rangle^2 \tau, \quad (\text{A6})$$

$$U_2(t) = \begin{cases} P'(t) \sim 0.7 \rho \langle v \rangle^2 \tau^2 \\ \frac{1}{2} \rho v'(t)^2 \sim 0.5 \rho \langle v \rangle^2 \tau^2. \end{cases}$$

Some values are given in Table V. We can see that for turbulence intensity larger than 20%, like those obtained in Von Kármán cells, and in wake or “hunk flows, almost 30% of the measured signal comes from second-order correction terms. However, for turbulence intensities of grid flows, less than 2% in our case, more than 96% of the measured signal comes from the linear velocity term.

- ¹L. Landau and E. Lifshitz, *Fluid Mechanics*, Course of Theoretical Physics, 2nd ed. (Pergamon Press, 1987), Vol. 6.
- ²B. Castaing, B. Chabaud, B. Hébral, A. Naert, and J. Peinke, “Turbulence at helium temperature: Velocity measurements,” *Physica B* **194–196**, 697 (1994).
- ³G. Zocchi, P. Tabeling, J. Maurer, and H. Willaime, “Measurement of the scaling of the dissipation at high Reynolds numbers,” *Phys. Rev. E* **50**, 3693 (1994).
- ⁴O. Chanal, B. Chabaud, B. Castaing, and B. Hébral, “Intermittency in a turbulent low temperature gaseous helium jet,” *Eur. Phys. J. B* **17**, 309 (2000).
- ⁵S. Pietropinto, C. Poulain, C. Baudet, B. Castaing, B. Chabaud, Y. Gagne, B. Hébral, Y. Ladam, P. Lebrun, O. Pirotte, and P. Roche, “Superconducting instrumentation for high Reynolds turbulence experiments with low temperature gaseous helium,” *Physica C* **386**, 512 (2003).
- ⁶D. S. Holmes and S. V. Sciver, “Attenuation of second sound in bulk flowing He II,” *J. Low Temp. Phys.* **87**, 73 (1992).
- ⁷M. R. Smith, R. J. Donnelly, N. Goldenfeld, and W. F. Vinen, “Decay of vorticity in homogeneous turbulence,” *Phys. Rev. Lett.* **71**, 2583 (1993).
- ⁸S. R. Stalp and J. J. Niemela, “Dissipation of grid turbulence in helium II,” *Phys. Fluids* **14**, 1377 (2002).
- ⁹L. Skrbek, A. Gordeev, and F. Soukup, “Decay of counterflow He II turbulence in a finite channel: Possibility of missing links between classical and quantum turbulence,” *Phys. Rev. E* **67**, 047302 (2003).
- ¹⁰P.-E. Roche, P. Diribarne, T. Didelot, O. Français, L. Rousseau, and H. Willaime, “Vortex density spectrum of quantum turbulence,” *EPL* **77**, 66002 (2007).
- ¹¹J. Maurer and P. Tabeling, “Local investigation of superfluid turbulence,” *EPL* **43**, 29 (1998).
- ¹²The confirmation previously cited by Roche *et al.* (Ref. 10) is presented in the present paper.
- ¹³L. Merahi, P. Sagaut, and M. Abidat, “A closed differential model for large-scale motion in HVBK fluids,” *EPL* **75**, 757 (2006).
- ¹⁴P.-E. Roche, C. Barenghi, and E. Lévêque, “Quantum turbulence at finite temperature: The two-fluids cascade,” *EPL* **87**, 54006 (2009).
- ¹⁵C. Nore, M. Abid, and M. Brachet, “Decaying Kolmogorov turbulence in a model of superflow,” *Phys. Fluids* **9**, 2644 (1997).
- ¹⁶T. Araki, M. Tsubota, and S. K. Nemirovskii, “Energy spectrum of superfluid turbulence with no normal-fluid component,” *Phys. Rev. Lett.* **89**, 145301 (2002).
- ¹⁷M. Kobayashi and M. Tsubota, “Kolmogorov spectrum of superfluid turbulence: Numerical analysis of the gross-Pitaevskii equation with a small-scale dissipation,” *Phys. Rev. Lett.* **94**, 065302 (2005).
- ¹⁸W. F. Vinen and J. J. Niemela, “Quantum turbulence,” *J. Low Temp. Phys.* **128**, 167 (2002).
- ¹⁹T. Haruyama, N. Kimura, and T. Nakamoto, “FPS51B—a small piezoresistive silicon pressure sensor for use in superfluid helium,” in 17th International Cryogenic Engineering Conference, ICEC17 (Taylor & Francis, Bournemouth, 14–17 July 1998).
- ²⁰M. Maeda, A. Sato, M. Yuyama, M. Kosuge, F. Matsumoto, and H. Nagai, “Characteristics of a silicon pressure sensor in superfluid helium pressurized up to 1.5 MPa,” *Cryogenics* **44**, 217 (2004).
- ²¹J. Maurer, P. Tabeling, and G. Zocchi, “Statistics of turbulence between 2 counterrotating disks in low-temperature helium gas,” *EPL* **26**, 31 (1994).
- ²²B. Rousset, C. Baudet, M. B. Mardion, B. Castaing, D. Communal, F. Daviaud, P. Diribarne, B. Dubrulle, A. Forgeas, Y. Gagne, A. Girard, B. Hébral, P.-E. Roche, P. Roussel, and P. Thibault, “Tsf experiment for com-

- parison of high Reynolds number turbulence in both He I and He II: First results," *AIP Conf. Proc.* **53**, 633 (2008).
- ²³P. Diribarne, J. Salort, C. Baudet, B. Belier, B. Castaing, L. Chevillard, F. Daviaud, S. David, B. Dubrulle, Y. Gagne, A. Girard, B. Rousset, P. Tabeling, P. Thibault, H. Willaime, and P.-E. Roche, in *Advances in Turbulence XII, ETC12*, edited by B. Eckhardt (Springer-Verlag, Marburg, 2009), p. 701.
- ²⁴G. Comte-Bellot and S. Corrsin, "The use of a contraction to improve the isotropy of grid-generated turbulence," *J. Fluid Mech.* **25**, 657 (1966).
- ²⁵M. S. Mohamed and J. C. LaRue, "The decay power law in grid-generated turbulence," *J. Fluid Mech.* **219**, 195 (1990).
- ²⁶S. B. Pope, *Turbulent Flows* (Cambridge University Press, Cambridge, 2000).
- ²⁷G. Comte-Bellot and S. Corrsin, "Simple Eulerian time correlation of full- and narrow-band velocity signals in grid-generated 'isotropic' turbulence," *J. Fluid Mech.* **48**, 273 (1971).
- ²⁸M. G. Gad-el-Hak and S. Corrsin, "Measurements of the nearly isotropic turbulence behind a uniform jet grid," *J. Fluid Mech.* **62**, 115 (1974).
- ²⁹C. Gibson and W. Schwarz, "The universal equilibrium spectra of turbulent velocity and scalar fields," *J. Fluid Mech.* **16**, 365 (1963).
- ³⁰J. Schedvin, G. Stegen, and C. Gibson, "Universal similarity at high grid Reynolds numbers," *J. Fluid Mech.* **65**, 561 (1974).
- ³¹K. R. Sreenivasan, "On the universality of the Kolmogorov constant," *Phys. Fluids* **7**, 2778 (1995).
- ³²J. H. Lienhard, "Synopsis of lift, drag, and vortex frequency data for rigid circular cylinders," Research Division Bulletin, Washington State University, 300 (1966).
- ³³C. Simand, F. Chillà, and J.-F. Pinton, "Inhomogeneous turbulence in the vicinity of a large-scale coherent vortex," *EPL* **49**, 336 (2000).
- ³⁴P.-E. Roche and C. Barenghi, "Vortex spectrum in superfluid turbulence: Interpretation of a recent experiment," *EPL* **81**, 36002 (2008).
- ³⁵M. Paoletti, M. E. Fisher, K. Sreenivasan, and D. Lathrop, "Velocity statistics distinguish quantum turbulence from classical turbulence," *Phys. Rev. Lett.* **101**, 154501 (2008).
- ³⁶A. White, C. Barenghi, N. Proukakis, A. Youd, and D. Wacks, "Nonclassical velocity statistics in a turbulent atomic Bose-Einstein condensate," *Phys. Rev. Lett.* **104**, 075301 (2010).
- ³⁷S. Barth, H. Koch, A. Kittel, J. Peinke, J. Burgold, and H. Wurmus, "Laser-cantilever anemometer: A new high-resolution sensor for air and liquid flows," *Rev. Sci. Instrum.* **76**, 075110 (2005).
- ³⁸M. Uberoi, "Quadruple velocity correlations and pressure fluctuations in isotropic turbulence," *J. Aerosp. Sci.* **20**, 197 (1953).
- ³⁹G. Batchelor, "Pressure fluctuations in isotropic turbulence," *Proc. Cambridge Philos. Soc.* **47**, 359 (1951).
- ⁴⁰U. Schumann and G. Patterson, "Numerical study of pressure and velocity fluctuations in nearly isotropic turbulence," *J. Fluid Mech.* **88**, 685 (1978).