



**HAL**  
open science

## HIGH FREQUENCY OF COPY NUMBER IMBALANCES IN RUBINSTEIN-TAYBI PATIENTS NEGATIVE TO CREBBP MUTATIONAL ANALYSIS

Lidia Larizza, Cristina Gervasini, Federica Mottadelli, Roberto Ciccone, Paola Castronovo, Donatella Milani, Gioacchino Scarano, Maria Francesca Bedeschi, Serena Belli, Alba Pilotta, et al.

► **To cite this version:**

Lidia Larizza, Cristina Gervasini, Federica Mottadelli, Roberto Ciccone, Paola Castronovo, et al.. HIGH FREQUENCY OF COPY NUMBER IMBALANCES IN RUBINSTEIN-TAYBI PATIENTS NEGATIVE TO CREBBP MUTATIONAL ANALYSIS. *European Journal of Human Genetics*, 2010, n/a (n/a), pp.n/a-n/a. 10.1038/ejhg.2010.1 . hal-00508326

**HAL Id: hal-00508326**

**<https://hal.science/hal-00508326>**

Submitted on 3 Aug 2010

**HAL** is a multi-disciplinary open access archive for the deposit and dissemination of scientific research documents, whether they are published or not. The documents may come from teaching and research institutions in France or abroad, or from public or private research centers.

L'archive ouverte pluridisciplinaire **HAL**, est destinée au dépôt et à la diffusion de documents scientifiques de niveau recherche, publiés ou non, émanant des établissements d'enseignement et de recherche français ou étrangers, des laboratoires publics ou privés.

**Title****HIGH FREQUENCY OF COPY NUMBER IMBALANCES IN RUBINSTEIN-TAYBI PATIENTS NEGATIVE TO *CREBBP* MUTATIONAL ANALYSIS****Running Title**

Array-CGH analysis of Rubinstein-Taybi patients

**Authors**

Cristina Gervasini<sup>a\*</sup>, Federica Mottadelli<sup>a\*</sup>, Roberto Ciccone<sup>b</sup>, Paola Castronovo<sup>a</sup>,  
Donatella Milani<sup>c</sup>, Gioacchino Scarano<sup>d</sup>, Maria Francesca Bedeschi<sup>e</sup>, Serena Belli<sup>f</sup>, Alba  
Pilotta<sup>g</sup>, Angelo Selicorni<sup>c</sup>, Orsetta Zuffardi<sup>b</sup>, and Lidia Larizza<sup>a</sup>

**Affiliations**

<sup>a</sup>Division of Medical Genetics, San Paolo School of Medicine, University of Milan,  
Milan, Italy

<sup>b</sup>Sezione di Biologia Generale e Genetica Medica, Università di Pavia, Italy

<sup>c</sup>I Clinica Pediatrica, Fondazione Policlinico Mangiagalli Regina Elena, Milan, Italy

<sup>d</sup>U.O. Genetica Medica, A.O. "G. Rummo", Benevento, Italy

<sup>e</sup>Clinical Genetic Unit, Fondazione Ospedale Maggiore Policlinico Mangiagalli e  
Regina Elena, Department of Obstetrics and Pediatrics, Milano, Italy

<sup>f</sup>Consultorio Genetico APSS, Trento, Italy

<sup>g</sup>Auxoendocrinologia, Ospedale Pediatrico Brescia

\*These authors contributed equally to the work

## **Corresponding author**

Lidia Larizza MD

Division of Medical Genetics, San Paolo School of Medicine, University of Milan,

Milan, Italy Via A.di Rudini, 8 20142 MILANO, ITALY

Tel. +39 2 50323206

Fax +39 2 50323026

e-mail: lidia.larizza@unimi.it

## **ABSTRACT**

Rubinstein-Taybi syndrome (RSTS) is a rare autosomal dominant disorder characterised by facial dysmorphism, growth and psychomotor development delay, and skeletal defects. The known genetic causes are point mutations or deletions of the *CREBBP* (50-60%) and *EP300* (5%) genes.

In order to detect chromosomal rearrangements indicating novel positional candidate RSTS genes, we used a-CGH to study 26 patients fulfilling the diagnostic criteria for RSTS who were negative at FISH analyses of the *CREBBP* and *EP300* regions, and direct sequencing analyses of the *CREBBP* gene.

We found seven imbalances (27%): four *de novo* and three inherited rearrangements not reported among the copy number variants. A *de novo* 7p21.1 deletion of 500 Kb included the *TWIST1* gene, a proposed candidate for RSTS that is responsible for the Saethre-Chotzen syndrome, an entity that enters in differential diagnosis with RSTS. A similar issue of differential diagnosis was raised by a large 4.3 Mb 2q22.3q23.1 deletion encompassing *ZEB2*, the gene responsible for the Mowat-Wilson syndrome, whose signs may overlap with RSTS. Positional candidate genes could not be sought in the

remaining pathogenetic imbalances, due to the size of the involved region (a 9 Mb 2q24.3q31.1 deletion) and/or the relative paucity of suitable genes (a 5 Mb 3p13p12.3 duplication). One of the inherited rearrangements, the 17q11.2 379 Kb duplication, represents the reciprocal event of the deletion underlying an overgrowth syndrome, both being mediated by the NF1-REP-P1 and REP-P2 sub-duplicons. The contribution of this and the other detected CNVs to the clinical RSTS phenotype is difficult to assess.

### **Key words**

Rubinstein-Taybi syndrome; array-CGH; genomic imbalances; differential diagnosis; genotype-phenotype correlations

### **INTRODUCTION**

Rubinstein-Taybi syndrome (RSTS, MIM #180849) is an autosomal dominant disease that occurs in 1 out of 125,000 births. Affected patients are characterised by growth and psychomotor development delay due to the major involvement of the skeletal and central nervous systems. The main skeletal features are radially diverted phalanges (in one-third of cases) and broad and duplicated distal phalanges of the thumbs and halluces (99% of the patients), which are hallmark signs of the syndrome. Typical facial dysmorphisms such as down-slanting palpebral fissures and a prominent beaked nose help clinical geneticists make a diagnosis.<sup>1</sup> The patients are also at increased risk of tumours<sup>2</sup>, especially those involving the epidermis such as pilomatrixomas<sup>3</sup> and epidermal nevi<sup>4</sup>.

RSTS is caused by mutations in two genes: cAMP response element-binding protein (*CREBBP*, also known as “*CBP*”) localised at 16p13.3<sup>5</sup>, and E1A associated protein

p300 (*EP300*), localised at 22q13<sup>6</sup>. Both genes encode histone acetyl transferases (HATs), transcriptional co-activators that are involved in cell processes such as growth, differentiation, DNA repair, apoptosis and many others<sup>7</sup>, and which also play an important role in the development of the skeletal and nervous central systems, thus accounting for the growth and psychomotor development delay typical of RSTS patients. Various techniques have been used to identify the genetic lesion underlying RSTS, including fluorescence *in situ* hybridisation (FISH)<sup>8-11</sup>, real-time quantitative PCR<sup>12</sup>, multiplex ligation-dependent probe amplification (MLPA)<sup>13</sup>, denaturing high performance liquid chromatography (DHPLC)<sup>14</sup> and sequencing<sup>15,16</sup>. Deletions of part or all of the *CREBBP* gene and flanking regions (also in mosaic condition)<sup>11</sup>, may account for 5-10% of the cases, whereas frameshift, nonsense, splice-site and missense point mutations (in decreasing order of prevalence) are found in about 46-51%<sup>17</sup>; there have also been reports of a few gene-disrupting translocations and inversions<sup>10</sup>.

*EP300* mutations are comparatively rare as only six have been described so far in six patients with a mild clinical presentation.<sup>6,18-20</sup> The pathological mechanism has been clarified in about 60% of cases, but multiple cryptic mutational mechanisms of the major *CBP* gene may be overlooked, including mosaic point mutations, mutations affecting the 5' and 3' UTRs, promoter epimutations and alterations at post-transcriptional or translational levels.

In brief, RSTS is a heterogeneous disorder due to at least two different genes, thus allowing speculation that other genes may also be involved and lead to the observed spectrum of clinical presentations.

Array comparative genomic hybridisation (a-CGH) is a powerful means of interrogating the overall genome for copy number alterations, but has so far only been used to

investigate the *CREBBP* region in RSTS patients.<sup>21</sup> The aim of this genome-wide assay was to identify rearrangements that might underlie RSTS-like phenotypes, and possibly detect positional candidate genes, in 26 Italian patients with a clinical diagnosis of RSTS who were negative at FISH analyses of the *CREBBP* and *EP300* regions and sequencing analyses of the *CREBBP* gene. We found seven imbalances (four *de novo* and three inherited rearrangements) and discuss their implications in RSTS and in related syndromic entities.

## **MATERIALS AND METHODS**

The 26 patients investigated by means of array CGH had a clinical diagnosis of RSTS, and were negative at FISH analyses of the *CREBBP* and *EP300* regions, and direct sequencing analyses of the *CREBBP* gene. Genomic DNA was isolated from the patients' peripheral blood samples using a QIAamp DNA Blood Kit (Qiagen, Hilde, Germany)

### **Array CGH analysis**

All of the patients were analysed using the 4x44K genome-wide chip (Agilent Technologies, Santa Clara, CA), which has an average resolution of 100 Kb. The parents of the carriers of genomic imbalances were also investigated.

Aliquots of 500 ng of patient and reference DNAs (Promega Corporation, Madison, WI) were double-digested with *RsaI* and *AluI* (Promega) for two hours at 37°C. After heat inactivation of restriction endonucleases at 65°C for 20 minutes, each digested sample was labelled by means of the Genomic DNA Labeling Kit PLUS (Agilent Technologies) for two hours at 37°C, using Cy5-dUTP for the patient DNAs and Cy3-dUTP for the reference DNAs. After purification from non-incorporated fluorochromes, the DNAs were properly combined and denatured for three minutes at 95°C. After 30

minutes' pre-annealing with 5 µg of Cot-1 DNA, the samples were hybridised at 65°C for 24 hours with rotation, and then the non-hybridised DNA was removed by means of two post-hybridisation washings. Images of the chips were acquired using the Agilent scanner and analysed by means of Feature Extraction 9.5 software 9.5; the results were graphically represented using CGH Analytics 3.5 software.

## **FISH**

The chromosome preparations were obtained using standard cytogenetic techniques. Briefly, phytohemagglutinin(PHA)-stimulated peripheral blood lymphocytes were set up in culture using the “Synchro” Chromosome Kit (Celbio) and modified RPMI (Irvine Scientific) plus 5% fetal calf serum (Gibco). The cultures were stopped with colchicine after 72 h.

The CREBBP and EP300 encompassing BAC probes were selected on the basis of their physical location (<http://www.genome.ucsc.edu/>): details are reported in Gervasini et al., 2007. DNA was isolated from liquid cultures using a plasmid purification kit (Nucleobond PC20, Macherey-Nagel). The BAC clones were labelled with digoxigenin-11-dUTP or biotin-16-dUTP (Roche Diagnostics) using a nick translation kit (Roche Diagnostics). The FISH experiments were performed using standard procedures.<sup>22</sup> The chromosomes were counterstained with DAPI in antifade (Vectashield), and visualised using a Leitz DM-RB microscope equipped for DAPI and FITC/TRITC epifluorescence optics. The images were captured by means of a CCD camera (High Performance CCD Camera COHU), and visualised using Highfish software (McProbe).

## **Microsatellite segregation analysis**

Segregation from parents to probands was analysed using the D2S2188, D2S399, D3S3653 and D3S4533 fluorescent dye-labelled microsatellite markers, with the

fluorescence being detected by means of an ABI 3100 sequencer. ABI PRISM software (Genescan) was used for gel analysis.

### **SNP sequence analysis**

The DNA direct sequencing of the SNPs rs2084674, rs 34729008 and rs2084674 was performed by means of an ABI PRISM 3130 sequencer (Applied Biosystem), and the electropherograms were analysed using Chromas Pro version 1.42 software.

## **RESULTS**

### Overview of array CGH findings

The 26 RSTS patients (14 males and 12 females aged between six months and 42 years) had clinical diagnoses ranging from definite (consistent) to probable (suggestive and within the spectrum) or possible (borderline or RSTS-like). This cohort was selected because the patients were negative for CREBBP point mutations and chromosomal rearrangements affecting the CREBBP and EP300 regions, and thus consistent with our main aims of detecting genomic regions with sequence gains or losses (to be investigated in further detail in order to refine the clinical diagnosis) and identifying novel candidate RSTS genes. Seven of the 26 patients carried DNA copy number alterations, including four deletions and three duplications: the *de novo* imbalances were two large deletions of chromosome 2q (one encompassing 9 Mb at 2q24.3q31.1 and the other 4.3 Mb at 2q22.3q23.1), a small deletion of chromosome 7p21.1, and a 5 Mb duplication at 3p13p12.3 (Table 1). Table 2 shows the clinical signs of these four cases, and Figure 1 the facial appearance and typical right thumb/hallux of three of them.

### Details concerning the genomic regions involved in the *de novo*/inherited imbalances



### Patient 51

The 4.3 Mb 2q22.3q23.1 deletion was confirmed by FISH using the CTD2162B21 BAC clone. Segregation analysis of SNPs rs2084674 (and rs34729008 mapping within the deletion) demonstrated that the deletion arose *de novo* on the paternally contributed chromosome as independently confirmed by array CGH of the parents' DNA (data not shown). Six *RefSeq* genes are located in the deleted interval, including the zinc finger homeobox 1B *ZEB2* that is responsible for Mowat-Wilson syndrome (OMIM#235730) (Figure 2a).

### Patient 14

The 9 Mb 2q24.3q31.1 deletion involves >50 *RefSeq* genes and the *HOXD* gene cluster in its distal *HOXD13* element (Figure 2b). The distal breakpoint was validated and characterised by means of double-colour metaphase FISH using the CTD-2226C5 (specific for the whole *HOXD* cluster) and RP11-892L20 BAC (covering the upstream regulatory region), which respectively map outside and inside the deletion. The same BAC array-CGH and FISH analyses were applied to both parents and confirmed the *de novo* origin of the deletion. Segregation analysis using microsatellites D2S2188 and D2S399 (both mapping within the deletion) demonstrated that the deletion arose *de novo* on the paternally contributed chromosome (data not shown). Using the RP11-471A5 and RP11892L20 BACs (mapping inside the deletion) and CTD-2226B10 (mapping outside) to study the metaphases/nuclei of the father's chromosomes allowed us to exclude the presence of an inversion predisposing the region to break (data not shown). Previous karyotyping also revealed the presence in the patient of a marker chromosome (data not shown) that was not characterized in detail. The genes localized within the deleted region that are worth noting include: i) *HOXD13*, which encodes a

transcription factor that plays an important role in morphogenesis; ii) the *DLX1* and *DLX2* genes encoding proteins that may play a role in controlling craniofacial patterning, as well as in the differentiation and survival of inhibitory neurons in the forebrain; and iii) the gene for activating transcription factor 2 (*ATF2*, also called *CREBP1* or *CREB2*) whose product stimulates the CRE (cAMP-responsive element)-dependent genes and has acetyltransferase (HAT) activity specific for histones H2B and H4.

#### Patient 61

The 3p13p12.3 duplication spans 5.1 Mb and harbours seven *RefSeq* genes (Figure 2c). Segregation analysis using microsatellites D3S3653 and D3S4533 (mapping within the large duplicated segment) demonstrated its *de novo* origin on the maternally contributed chromosome, in line with the “normal” array CGH profile of both parents’ DNA. The duplicated genes of possible pathogenetic relevance are the roundabout, axon guidance receptor, homolog 2 (*ROBO2*) gene, which encodes a protein receptor for SLIT Drosophila homolog 2 (*SLIT2*) that is known to function in axon guidance and cell migration, and the contactin 3 (*CNTN3*), a member of the contactin family that mediates cell surface interactions during nervous system development .

#### Patient 58

The small deletion of 466 Kb in 7p21.1 (Figure 2d) affects the region containing *TWIST1*, the causative gene of Saethre-Chotzen syndrome (OMIM#101400) and interrupts *HDAC9*, a gene coding for a protein whose function is the opposite of that of *CREBBP*. The deletion was validated by FISH analysis using BAC clone CTD-2050C8, and its *de novo* origin was confirmed by parents analysis.

#### Patients 45, 78 and 29

The deletion of patient 78 (which spans 1.2 Mb in 18q22.1) and the 5.5 Mb 2q34q35 duplication of patient 45, shown by array CGH to be also carried by the patients' fathers, involve gene-poor regions. A bioinformatic search (Human Genome Segmental Duplication Database <http://projects.tcag.ca/humandup/>) revealed that these regions are not numbered copy number polymorphisms.

The duplication carried by patient 29 (Figure 3) only affects 379 Kb of the 17q11.2 region upstream of the *NF1* gene, which is delimited by the sub-duplicons REP-P1/P2 of the proximal NF1-REP P (Figure 3c). The duplication was confirmed by FISH analysis using BAC clone RP11-753N3 and excluded in the healthy mother (data not shown). Although the father was unavailable for testing, his carrier status could be inferred from the array CGH-assessed presence of the same duplication in the healthy patient's sister.

## **DISCUSSION**

Rubinstein-Taybi syndrome is a genetically heterogeneous disorder with a causative genetic lesion only detected in 50-60% of cases.<sup>15,16,23</sup> This low mutation rate may be attributable to overlooked mosaic point mutations, incomplete coverage in the sequencing procedure of the regulatory and intronic regions of the known genes (*CREBBP* and *EP300*), or the involvement of additional RSTS-causing genes.

We addressed this last possibility using array CGH to process a cohort of patients with a definite, probable or possible clinical diagnosis of RSTS, who were negative to mutation/deletion scans of *CREBBP* and the FISH analysis of *EP300*, and found that seven of the 26 patients (27%) bore genomic imbalances. The rearrangements were *de novo* in four cases, and were therefore assessed as possible causes of the phenotype. A

reassessment of the carriers of the de novo imbalances confirmed the presence of the main clinical signs of RSTS, such as mental retardation and hand/foot anomalies (Table 2 and Figure 1).

In order to favour the search for positional candidate genes, the gained or lost genomic regions should be as small as possible. One example is the 500 Kb deletion in 7p21.1 in our patient 58: of the two genes located in the deleted region., it is difficult to link *HDAC9* to the clinical presentation of RSTS as it encodes a factor (histone deacetylase) that plays the opposite role of HAT domain of *CREBBP* (Figure 2d), but *TWIST1* may be relevant (Figure 2d) as it encodes a transcription factor implicated in skeletal development and its mutations lead to Saethre-Chotzen syndrome (SCS), a genetic autosomal dominant condition characterised by acrocephalosyndactyly and dysmorphisms. *TWIST1* has been proposed as candidate gene for RSTS<sup>10,24</sup>, on the basis of its nature as a master switch of skeleton morphogenesis and the fact that, like *CREBBP*, it regulates the development of multiple target genes; however, only a targeted mutational scan of *CREBBP*- and *EP300*-negative patients with a clinical diagnosis of RSTS can validate its potential role. The conclusion that can be drawn from the described case is that the overlapping features of SCS and RSTS should be considered when clinically diagnosing the highly different phenotypes of RSTS. As shown in Table 1, patient 58 was given a “possible” clinical RSTS diagnosis because his phenotype mimics RSTS but also shares some of the signs shown by SCS patients carrying a microdeletion involving the same region or point mutations in the *TWIST1* gene (Table 2). This “borderline” phenotype confirms the difficulty of distinguishing the two syndromes in patients with signs of both.

A question of differential diagnosis is also raised by patient 51, who carries the large 4.3 Mb 2q22.3q23.1 deletion that includes the zinc finger homeobox 1B (*ZEB2*) gene (Figure 2a) and was initially given a diagnosis of “probable” RSTS (Table 1). Point mutations of the *ZEB2* gene or microdeletions of the region encompassing it lead to Mowat-Wilson syndrome (MWS), a genetic autosomal dominant syndrome that is characterised by microcephaly, mental retardation and distinct facial features.<sup>25</sup> It seems that haploinsufficiency of *ZEB2* and other genes mapping to the same region may explain the phenotype of a patient who has been diagnosed as having RSTS but also has signs overlapping those of MWS (Table 2).

The genomic rearrangements in the remaining two patients carrying *de novo* imbalances are too gross to identify probable RSTS candidate genes and do not encompass any key gene associated with a well-defined syndrome (Figure 2).

Patient 14 carries a 9Mb deletion in 2q24.3q31.1 that involves >50 genes, the largest imbalance observed. The very high number of genes precludes any correlation between the haploinsufficiency of specific dose-sensitive genes and the overall phenotype, but some of the master genes mapping to this gene-rich region deserve comment. Differently sized deletions (5-33 Mb) that partially overlap that of patient 14 and include the *HOXD* gene cluster have been described in patients with distinct phenotypes except for variable limb abnormalities.<sup>26-29</sup> The *HOXD* genes are members of a homeobox gene family encoding highly conserved transcription factors that play an important morphogenetic role in all multicell organisms, mainly by acting on the development of the central nervous system, the axial skeleton, the gastrointestinal and urogenital tracts, and limbs<sup>30</sup>, and they have been proposed as good candidates for causing the limb anomalies in patients with a 2q24q31 deletion<sup>31</sup>. Interestingly, FISH

mapping of the distal deletion breakpoint of our patient showed that it lies outside the *HOXD* gene cluster, but includes *HOXD13* and the regulatory elements of the whole cluster (Figure 2b). The absence of the *HOXD* regulatory elements may explain why the digital anomalies are much milder than those of patients with a deletion including the *HOXD* cluster, as it has been previously pointed out in the case of a patient carrying a similar deletion except for the additional involvement of SNC cluster genes.<sup>32</sup>

The deletion includes the genes *DLX1* and *DLX2* (which encode homeobox transcription factors that play a role in controlling craniofacial patterning and the differentiation of inhibitory neurons in the forebrain), and their haploinsufficiency may be responsible for our patient's neurological and dysmorphic phenotype. The deleted region also includes the *ATF2* gene which, like *CREBBP*<sup>33-35</sup>, encodes a histone acetyltransferase (HAT) that specifically acetylates histones H2B and H4.

The *de novo* duplication at 3p13p12.3 observed in patient 61 encompasses a large (5 Mb) but gene-poor region.. Among the involved genes, neither the roundabout, axon guidance receptor, homolog 2 (*ROBO2*)<sup>36</sup> nor contactin 3 (*CNTN3*) seem to be suitable candidates for RSTS. However, the patient's corpus callosum agenesis and autistic traits may be attributable to the dosage alteration of the *ROBO2* gene, which may play a role in axon guidance along the dorsoventral axis in the forebrain<sup>37</sup> and could be related to the autistic phenotype<sup>38</sup>.

The three inherited imbalances may be of interest because they are all private and none of them is included in the databases of polymorphic variants being yet undescribed in the normal population at a frequency >1%. Their role in the clinical phenotypes of the carrier patients remains unclear, although reduced penetrance may account for the absence of the putatively associated phenotype in the healthy parent.

The 400 Kb dup17q11.2 of patient 29 (Figure 3b) is peculiar because it is embedded in the region deleted in neurofibromatosis type 1 (NF1) microdeletion syndrome and localised between the sub-duplicons NF1-REP-P1 and REP-P2. REP-P1 mediates the common NF1 microdeletions with the paralogous NF1-REP-M<sup>39</sup>, whereas REP-P2 has not been reported to be involved in NF1 deletions. This imbalance is the exact reciprocal duplication of a recently reported deletion involving the same region<sup>40</sup>, both of which can be considered genomic rearrangements insofar as they are mediated by non-allelic homologous recombination (NAHR) of REP-P1 and REP-P2. The deletion described by Douglas has been associated with an overgrowth syndrome that is presumably due to the haploinsufficiency of the *RNF135* gene, which has been found to be mutated in another group of patients with the same overgrowth syndrome.<sup>40</sup> In our case, the duplication is inherited and so it is only possible to hypothesise that the gain of dose of the genes localised in the duplicated interval (*RNF135*, *ADAP2*, *C17orf42*, *ATAD5*, *CRLF3*, *LRRC37B2*) (Figure 3c) may contribute to the patient's skeletal anomalies (Figure 3a) and mental retardation. In general, the phenotype resulting from duplications that are even much larger than this is subtle and may be overlooked, as is indicated by the adult age at which a diagnosis was proposed for our patient.

In conclusion, this study is the first systematic array CGH analysis of a cohort of patients with RSTS or RSTS-like features previously screened for mutations in the main *CREBBP* gene and deletions in regions harbouring the causative *CREBBP* and *EP300* genes. The large proportion of chromosomal rearrangements in regions other than those of *CREBBP/EP300* genes confirms that array CGH is a suitable diagnostic approach. As no consensus list of diagnostic criteria is yet available for RSTS, array-CGH can be considered a useful means of differentiating patients with overlapping clinical signs. In

relation to its use in identifying novel positional RSTS candidate genes, further studies may detect recurrent imbalances or validate/exclude the role of *TWIST1* in the etiology of RSTS.

It is very difficult to interpret the effect of the four *de novo* chromosome abnormalities found in our patients, and it is not possible to exclude a coincidental finding due to the extremely broad clinical spectrum of RSTS or a cryptic differential diagnosis. Furthermore, the fact that the microdeletions and microduplication of cases 78, 29 and 45 are inherited from healthy parents but not listed as CNVs makes it difficult to interpret their contribution to the clinical phenotype.

### **Acknowledgements**

We would like thank the patients' families for participating in this study, and the clinicians who provided some of the patients (Prof. G. Cocchi, Centro per lo Studio delle Malformazioni Congenite, Istituto Clinico di Pediatria preventiva e Neonatologia, University of Bologna, and Prof. M.L. Giovannucci-Uzielli, Unità di Genetica, Dip. Pediatria, Osp. Meyer, University of Florence). This study was supported by 2007-2008 grant from the Associazione Studio Malformazioni (A.S.M.) to L.L. (University of Milan) and A.S. (Fondazione Ospedale Maggiore, Policlinico, Regina Elena, Mangiagalli). We would also like to thank the Galliera Genetic Bank Italian Telethon project GTF4003 for providing us with lymphoblastoid cellular lines of some of the studied patients. We gratefully acknowledge our feedback discussion with the group of Dr. Angel Barco (Universidad Miguel Hernandez De Elche, Alicante, Spain) in the framework of the Italy-Spain bilateral MIUR project on RSTS (IT08143C4F).



## References

1. Rubinstein JH, Taybi H: Broad thumbs and toes and facial abnormalities. A possible mental retardation syndrome. *Am J Dis Child* 1963; **105**: 588-608.
2. Miller RW, Rubinstein JH: Tumors in Rubinstein-Taybi syndrome. *Am J Med Genet* 1995; **56**: 112-115.
3. Masuno M, Imaizumi K, Ishii T, Kuroki Y, Baba N, Tanaka Y: Pilomatrixomas in Rubinstein-Taybi syndrome. *Am J Med Genet* 1998; **77**: 81-82.
4. Schepis C, Greco D, Siragusa M, Batolo D, Romano C: Rubinstein-Taybi syndrome with epidermal nevus: a case report. *Pediatr Dermatol* 2001; **18**: 34-37.
5. Petrij F, Giles RH, Dauwerse HG *et al*: Rubinstein-Taybi syndrome caused by mutations in the transcriptional coactivator CBP. *Nature* 1995; **376**: 348-51.
6. Roelfsema JH, White SJ, Ariyürek Y *et al* : Genetic heterogeneity in Rubinstein-Taybi syndrome: mutations in both the CBP and EP300 genes cause disease. *Am J Hum Genet* 2005; **76**: 572-580.
7. Giordano A, Avantiaggiati ML: p300 and CBP: partners for life and death. *J Cell Physiol* 1999; **181**: 218-230.
8. McGaughran JM, Gaunt L, Dore J, Petrij F, Dauwerse HG, Donnai D : Rubinstein-Taybi syndrome with deletions of FISH probe RT1 at 16p13.3: two UK patients. *J Med Genet* 1996; **33**: 82-83.
9. Bartsch O, Wagner A, Hinkel GK *et al*: FISH studies in 45 patients with Rubinstein-Taybi syndrome: deletions associated with polysplenia, hypoplastic left heart and death in infancy. *Eur J Hum Genet* 1999; **7**: 748-756.

10. Petrij F, Dauwerse HG, Blough RI *et al*: Diagnostic analysis of the Rubinstein-Taybi syndrome: five cosmids should be used for microdeletion detection and low number of protein truncating mutations. *J Med Genet* 2000; **37**: 168-176.
11. Gervasini C, Castronovo P, Bentivegna A *et al* : High frequency of mosaic CREBBP deletions in Rubinstein-Taybi syndrome patients and mapping of somatic and germ-line breakpoints. *Genomics* 2007; **90**: 567-573.
12. Coupry I, Monnet L, Attia AA, Taine L, Lacombe D, Arveiler B: Analysis of CBP (CREBBP) gene deletions in Rubinstein-Taybi syndrome patients using real-time quantitative PCR. *Hum Mutat* 2004; **23**: 278-284.
13. Kriek M, Knijnenburg J, White SJ *et al*: Diagnosis of genetic abnormalities in developmentally delayed patients: a new strategy combining MLPA and array-CGH. *Am J Med Genet A* 2007; **143**: 610-614.
14. Udaka T, Kurosawa K, Izumi K *et al*: Screening for partial deletions in the CREBBP gene in Rubinstein-Taybi syndrome patients using multiplex PCR/liquid chromatography. *Genet Test* 2006; **10**: 265-271.
15. Bartsch O, Schmidt S, Richter M, *et al*: DNA sequencing of CREBBP demonstrates mutations in 56% of patients with Rubinstein-Taybi syndrome (RSTS) and in another patient with incomplete RSTS. *Hum Genet* 2005; **117**: 485-493.
16. Bentivegna A, Milani D, Gervasini C *et al*: Rubinstein-Taybi Syndrome: spectrum of CREBBP mutations in Italian patients. *BMC Med Genet* 2006; **7**: 77.
17. Roelfsema JH, Peters DJ: Rubinstein-Taybi syndrome: clinical and molecular overview. *Expert Rev Mol Med* 2007; **9**: 1-16.

18. Bartholdi D, Roelfsema JH, Papadia F *et al*: Genetic heterogeneity in Rubinstein-Taybi syndrome: delineation of the phenotype of the first patients carrying mutations in EP300. *J Med Genet* 2007; **44**: 327-333.
19. Zimmermann N, Acosta AM, Kohlhase J, Bartsch O: Confirmation of EP300 gene mutations as a rare cause of Rubinstein-Taybi syndrome. *Eur J Hum Genet* 2007; **15**: 837-842.
20. Foley P, Bunyan D, Stratton J, Dillon M, Lynch SA: Further case of Rubinstein-Taybi syndrome due to a deletion in EP300. *Am J Med Genet A* 2009 [Epub ahead of print]
21. Stef M, Simon D, Burgelin I *et al*: Testing and improving experimental parameters for the use of low molecular weight targets in array-CGH experiments. *Hum Mutat* 2006; **27**: 1143-1150.
22. Lichter P, Cremer T: Chromosome analysis by non-isotopic in situ hybridization. In *Human cytogenetics: a practical approach Volume 1*. 2nd edition. Edited by: Rooney DE, Czepulkowski BH. IRL, Oxford; 1992: 157-192.
23. Coupry I, Roudaut C, Stef M *et al*: Molecular analysis of the CBP gene in 60 patients with Rubinstein-Taybi syndrome. *J Med Genet* 2002; **39**: 415-421.
24. Lowry RB: Overlap between Rubinstein-Taybi and Saethre-Chotzen syndromes: a case report. *Am J Med Genet Suppl* 1990; **6**: 73-76.
25. Garavelli L, Zollino M, Mainardi PC *et al*: Mowat-Wilson syndrome: facial phenotype changing with age: study of 19 Italian patients and review of the literature. *Am J Med Genet A* 2009; **149A**: 417-426.

26. Nixon J, Oldridge M, Wilkie AO, Smith K: Interstitial deletion of 2q associated with craniosynostosis, ocular coloboma, and limb abnormalities: cytogenetic and molecular investigation. *Am J Med Genet* 1997; **70**: 324-327.
27. Slavotinek A, Schwarz C, Getty JF, Stecko O, Goodman F, Kingston H: Two cases with interstitial deletions of chromosome 2 and sex reversal in one. *Am J Med Genet* 1999; **86**: 75-81.
28. Bijlsma EK, Knecht AC, Bilardo CM *et al*: Increased nuchal translucency and split-hand/foot malformation in a fetus with an interstitial deletion of chromosome 2q that removes the SHFM5 locus. *Prenat Diagn* 2005; **25**: 39-44.
29. Svensson AM, Curry CJ, South ST *et al* : Detection of a de novo interstitial 2q microdeletion by CGH microarray analysis in a patient with limb malformations, microcephaly and mental retardation. *Am J Med Genet A* 2007; **143A**: 1348-1353.
30. Goodman FR: Limb malformations and the human HOX genes. *Am J Med Genet* 2002; **112**: 256-265.
31. Del Campo M, Jones MC, Veraksa AN *et al*: Monodactylous limbs and abnormal genitalia are associated with hemizygoty for the human 2q31 region that includes the HOXD cluster. *Am J Hum Genet* 1999; **65**:104-110.
32. Pescucci C, Caselli R, Grosso S *et al*: 2q24-q31 deletion: report of a case and review of the literature. *Eur J Med Genet* 2007; **50**: 21-32.
33. Ogryzko VV, Schiltz RL, Russanova V, Howard BH, Nakatani Y: The transcriptional coactivators p300 and CBP are histone acetyltransferases. *Cell* 1996; **87**: 953-959.

34. Schiltz RL, Mizzen CA, Vassilev A, Cook RG, Allis CD and Nakatani Y: Overlapping but distinct patterns of histone acetylation by the human coactivators p300 and PCAF within nucleosomal substrates. *J. Biol. Chem* 1999; **274**: 1189–1192.
35. Kalkhoven E: CBP and p300: HATs for different occasions. *Biochem Pharmacol* 2004; **68**:1145-1155.
36. Lu W, van Eerde AM, Fan X *et al*: Disruption of ROBO2 is associated with urinary tract anomalies and confers risk of vesicoureteral reflux. *Am J Hum Genet* 2007; **80**: 616-632.
37. Devine CA, Key B: Robo-Slit interactions regulate longitudinal axon pathfinding in the embryonic vertebrate brain. *Dev Biol* 2008; **313**: 371-383.
38. Anitha A, Nakamura K, Yamada K *et al*: Genetic analyses of roundabout (ROBO) axon guidance receptors in autism. *Am J Med Genet B Neuropsychiatr Genet* 2008; **147B**: 1019-1027.
39. Dorschner MO, Sybert VP, Weaver M, Pletcher BA, Stephens K: NF1 microdeletion breakpoints are clustered at flanking repetitive sequences. *Hum Mol Genet* 2000; **9**: 35-46.
40. Douglas J, Cilliers D, Coleman K *et al*: Mutations in RNF135, a gene within the NF1 microdeletion region, cause phenotypic abnormalities including overgrowth. *Nat Genet* 2007; **39**: 963-965.

## Figure legends

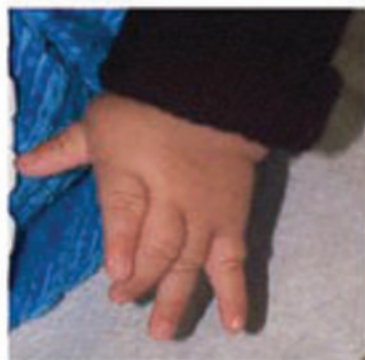
**Figure 1.** Facial features and hand/foot anomalies in RSTS patients carrying *de novo* imbalances: patient 61 (a), patient 14 (b), and patient 51 (c)

**Figure 2.** Mapping of the four identified *de novo* imbalances with the chromosome ideogram (left) and the corresponding aCGH profile: on the right, the region involved in the deletion/duplication is zoomed to show the genes possibly involved in the clinical phenotype and the markers (BACs/SNPs/microsatellites) used for the validation. The breakpoints are indicated by black horizontal bars according to the UCSC Genome Browser on Human, February 2009 Assembly.

**Figure 3.** Features of patient 29 (a), aCGH profile (b), and zoom of the region involved in the duplication, with the mapped genes and NF1-duplicons (c).



**a**



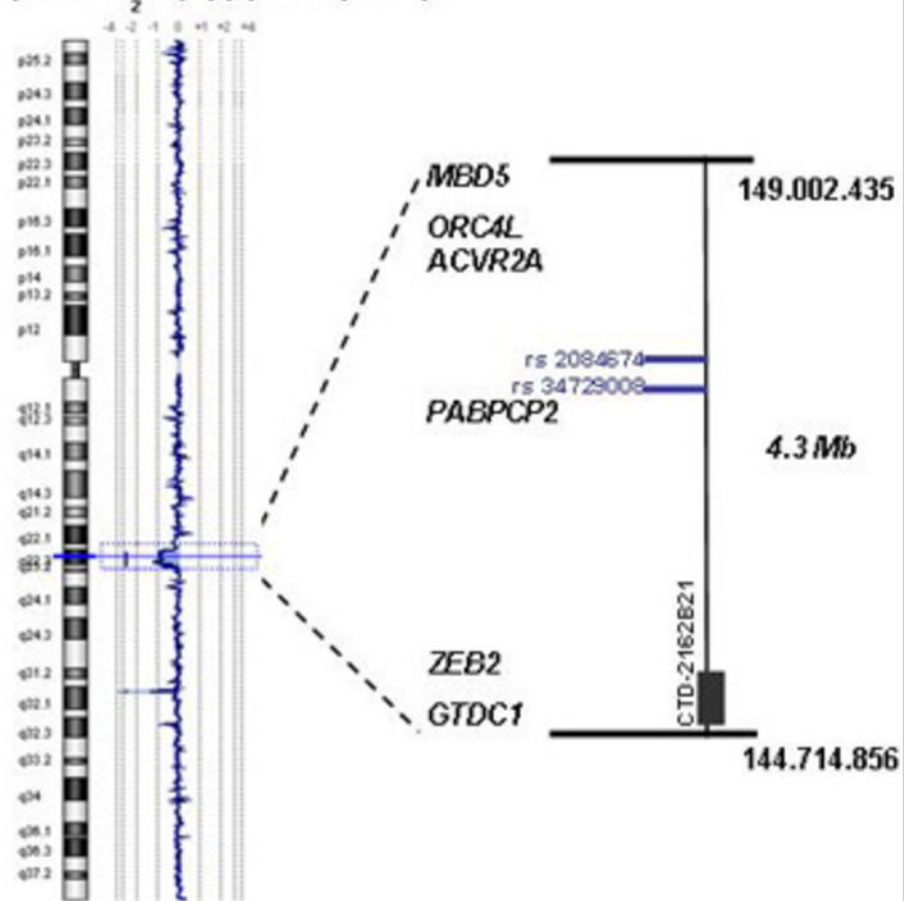
**b**



**c**

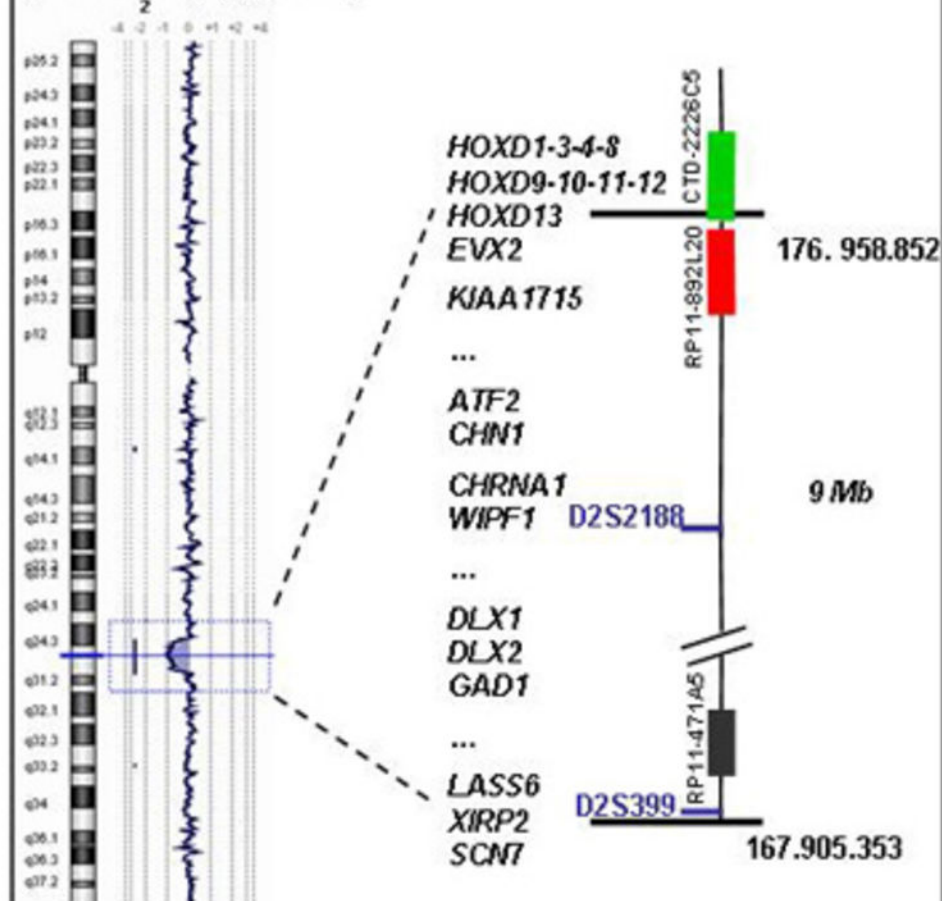
pt 51: del(2)(q22.3q23.1)

a



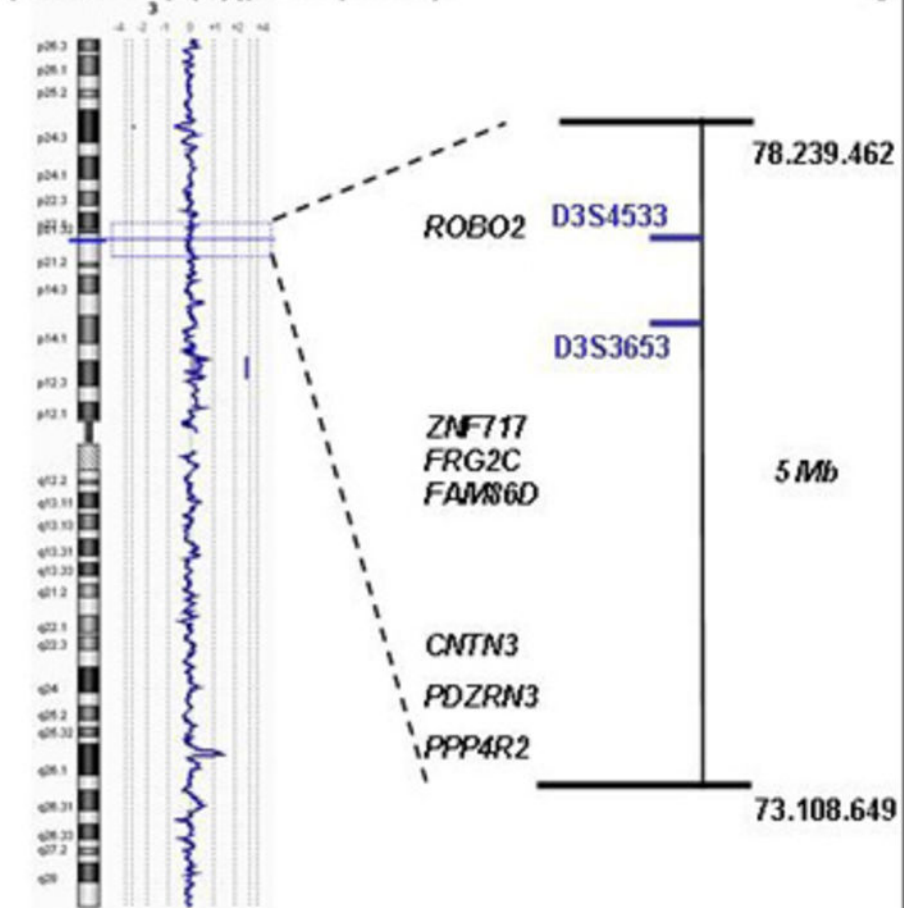
pt 14: del(2)(q24.3)

b



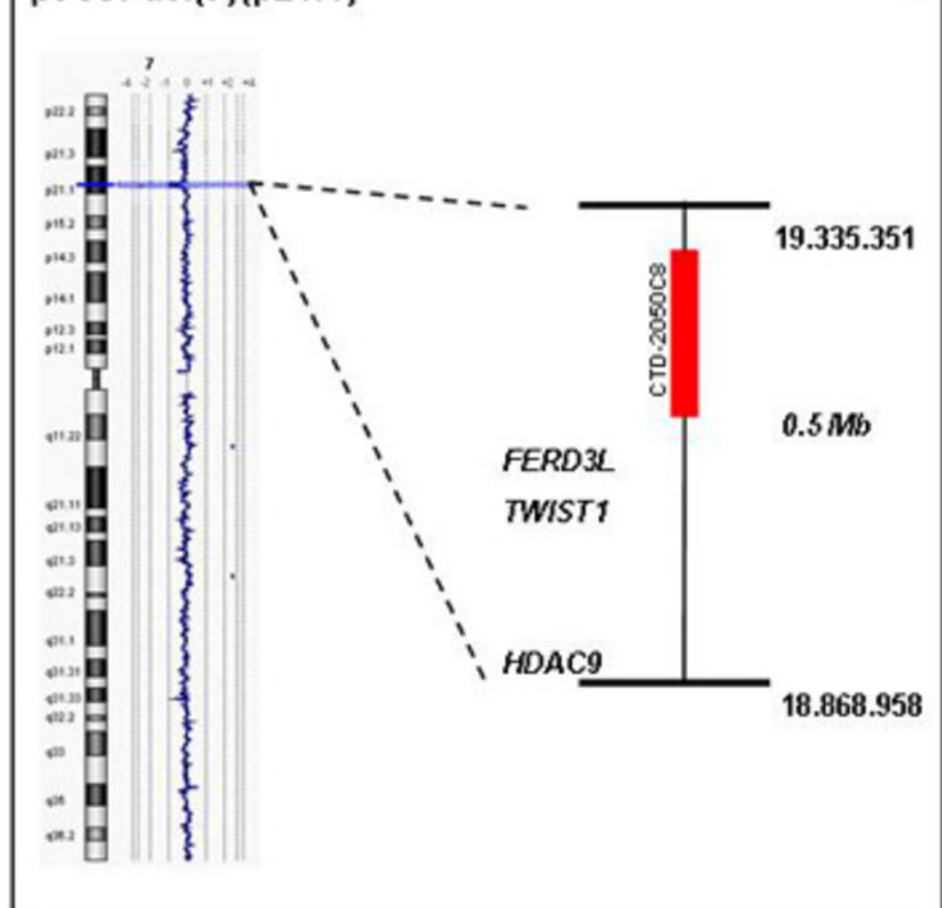
pt 61: dup(3)(p12.3p14.1)

c

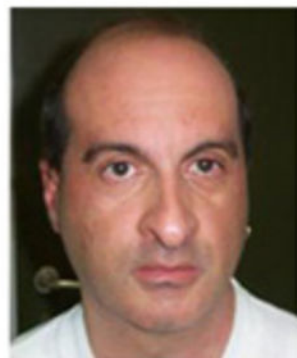


pt 58: del(7)(p21.1)

d





**a**

pt 29: dup (17)(q11.2)

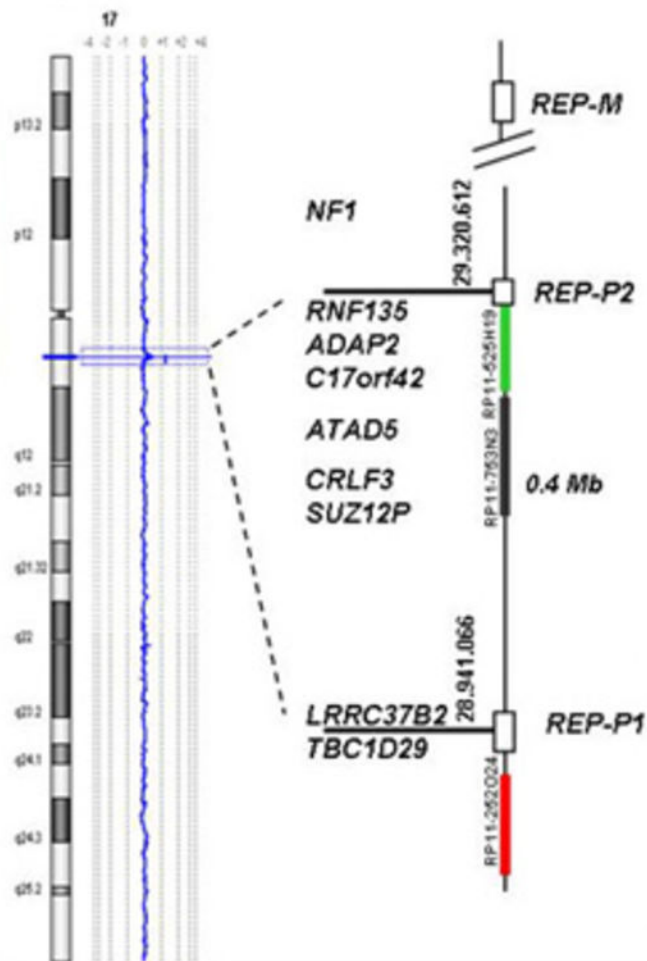
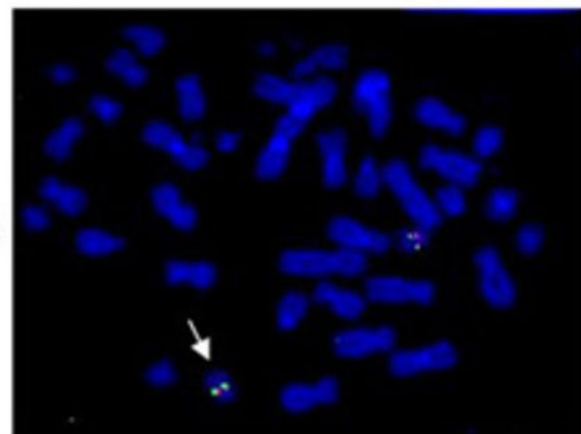
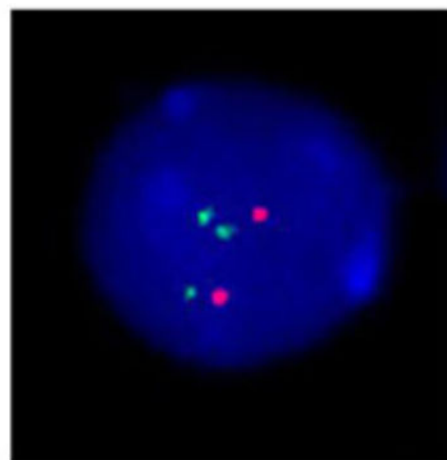
**b****c**

Table 1 De novo and inherited CNV detected by means of array-CGH in a set of 26 CREBBP-negative RSTS patients

clinical RSTS diagnosis	Patient	Copy Number Variation	size (Mb)	boundaries (bp) <sup>°</sup>	origin
probable	51	del (2)(q22.3q23.1)	4.3	144,714,856-149,002,435	<i>de novo</i> (paternal)
definite	14	del (2)(q24.3q31.1)	9.1	167,905,353-176,958,852	<i>de novo</i> (paternal)
definite	61	dup (3)(p13p12.3)	5.1	73,108,649-78,239,462	<i>de novo</i> (maternal)
possible	58	del (7)(p21.1)	0.5	18,868,958-19,335,351	<i>de novo</i> (-)
definite	45	dup (2)(q34q35)	4.9	212,860,355-217,724,468	*inherited (paternal)
definite	29	dup (17)(q11.2)	0.4	28,941,066-29,320,612	*inherited (paternal)
definite	78	del (18)(q22.1)	1.3	64,866,077-66,190,392	*inherited (paternal)

<sup>°</sup> UCSC Genome Browser on Human Feb. 2009 Assembly (hg19)

\* unreported in CNV databases

Table 2 RSTS spectrum and patient-specific clinical signs of the four patients carrying *de novo* imbalances

<i>patient</i>	<b>14</b>	<b>51</b>	<b>61</b>	<b>58</b>
<i>imbalance</i>	del 2q24.3	del 2q22.3q23.1	dup 3p12.3p14.1	del 7p21.4
<i>sex</i>	F	M	F	M
<i>age at diagnosis</i>	6m	4y	6m	5y
<i>main RSTS clinical signs</i>				
<b>Pre-natal growth retardation</b>	+	-	-	NA
<b>Post-natal growth</b>				
low birth weight	-	-	-	NA
low weight and/or height	+	-	-	-
<b>Development</b>				
failure to thrive	-	-	-	NA
feeding difficulty in infancy	-	-	+	NA
PM delay	+	+	+	speech delay
mental retardation	+	profound	moderate	+
behavioural problems	NA	autistic like behaviour	mild ADHD	NA
<b>Typical dysmorphisms</b>				
microcephaly	-	+	+	+
long eyelashes	+	+	-	-
dowslanting palpebral fissures	+	+	+	+
prominent beaked nose	+	+	-	+
columella below the alae nasi	+	+	+	+
"grimacing" smile	NA	+	NA	NA
high and vaulted palate	-	+	NA	+
micrognathia	+	-	-	-
other				left eye ptosis, short philtrum
<b>Hirsutism</b>	+	+	+	
<b>Hands</b>				
radial deviation of thumb	+	+	+	-
broad thumb	+	-	+	+
bifid thumb	-	-	-	-
other		-		5th finger clinodactyly
<b>Feet</b>				
broad hallux	+	+	+	+
bifid hallux	-	-	-	-
other	brachysyndactyly 3-4-5th finger			
<b>Major malformations</b>				
CNS anomalies	thin corpus callosum		corpus callosum agenesis, hippocampal anomalies	
ocular anomalies		left exotropia	strabismus, myopia	ptosis, exophoria
congenital heart defects	ventricular septal defect	PDA	-	-
cryptorchidism	/	+	/	+
dental anomalies	-	-	-	-
kidney anomalies	NA	left renal pelvis ectasia		NA
<b>Medical complications</b>				
neoplasms	-	-	-	NA
keloids	-	-	-	NA
other		tracheal stenosis		
<i>Individual clinical signs</i>	deafness left ear	genu valgum, pes planus, seizures	CLS, angioma	CLS

ADHD Attention-Deficit Hyperactivity Disorder  
 CLS café au lait spots  
 PDA patent ductus arteriosus  
 NA not assessed