



**HAL**  
open science

## Experimental study of blade rigidity effects on the global and the local performances of a thick blades axial-flow fan

Hussain Nouri, Florent Ravelet, Christophe Sarraf, Farid Bakir

### ► To cite this version:

Hussain Nouri, Florent Ravelet, Christophe Sarraf, Farid Bakir. Experimental study of blade rigidity effects on the global and the local performances of a thick blades axial-flow fan. Proceedings of the 3rd Joint US-European Fluids Engineering Summer Meeting and 8th International Conference on Nanochannels, Microchannels, and Minichannels, Aug 2010, Montreal, Canada. pp.FEDSM-ICNMM2010-30623, 10.1115/FEDSM-ICNMM2010-30623 . hal-00505858

**HAL Id: hal-00505858**

**<https://hal.science/hal-00505858>**

Submitted on 3 Sep 2012

**HAL** is a multi-disciplinary open access archive for the deposit and dissemination of scientific research documents, whether they are published or not. The documents may come from teaching and research institutions in France or abroad, or from public or private research centers.

L'archive ouverte pluridisciplinaire **HAL**, est destinée au dépôt et à la diffusion de documents scientifiques de niveau recherche, publiés ou non, émanant des établissements d'enseignement et de recherche français ou étrangers, des laboratoires publics ou privés.

# Experimental study of blade rigidity effects on the global and local performances of a thick blades axial-flow fan

Hussain Nouri, Florent Ravelet, Christophe Sarraf, and Farid Bakir  
*Arts et Metiers ParisTech, DynFluid, 151 boulevard de l'Hôpital, 75013 Paris, France.*

(Dated: Proceedings of 3rd Joint US-European Fluids Engineering Summer Meeting.)  
(Gust 1-5 2010, Montreal, Canada.)  
(DSM-ICNMM2010-30623)

An experimental investigation on the aerodynamic performances of thick blades axial-flow fans was carried out in this study. Two fans are considered, the first one is rotomoulded (in plastic) and the second one is milled (in aluminium). Both have exactly the same shape, except that the rotomoulded fan has hollow blades. They were designed from an existing fan (manufactured by plastic injection process) used in the cooling system of an automotive vehicle power unit. As far as shape is concerned, the only difference between the two first fans and the traditional injected fan is the blade thickness, whereas as far as rigidity is concerned, the only difference between the rotomoulded and the milled fans is the ability of the rotomoulded fan to be deformed easier than the milled fan.

The aim of this study is to determine on the one hand the influence of the blade thickness and on the other hand the way the deformation of the hollow blades may affect the global and the local performances.

The global performances of the fans were measured in a test bench designed according to the ISO 5801 standards. The curve of the aerodynamics characteristics (pressure head versus flow rate) and of the global efficiency are slightly lower for the rotomoulded fan. The wall pressure fluctuations were also investigated for three flow rates: one corresponding to the maximum efficiencies of both fans and the two others corresponding to an under-flow and an over-flow rate. The power spectral density (PSD) levels, are between six and nine times higher for the rotomoulded fan at nominal flow rate. At partial flow rate, however, the PSD levels are close for both fans.

## NOMENCLATURE

### Roman characters

$qv$	$[m^3 \cdot s^{-1}]$	flow rate
$c$	$[m]$	Chord length
$x/c$	$[-]$	Relative chord wise location
$f$	$[Hz]$	frequency
$D$	$[mm]$	Ducting pipe diameter
$P_s$	$[W]$	Electric power supplied to the shaft

### Greek characters

$\eta$	$[-]$	Efficiency
$\omega$	$[rad.s^{-1}]$	Angular velocity
$\phi$	$[-]$	Flow coefficient
$\Psi$	$[-]$	Pressure coefficient
$\gamma$	$[^\circ]$	Stagger angle
$\Delta p$	$[Pa]$	Pressure rise

### Subscripts

ext	External
int	Internal
bpf	Blade passing frequency
Max	Maximum

## I. INTRODUCTION

The present study is part of a research project that intends to propose a cost-effective axial-fan manufacturing solution for small series production. In fact, the usual manufacturing process by plastic injection is cost-

effective only for mass production series ( $> 10000$  pieces). The rotomoulding process [1] on the contrary has the advantage of being cost-effective even for small series (between 100 and 1000 pieces). However, in comparison with plastic injection fans, the rotomoulded fans blades present three major drawbacks.

First, the blades are hollow in a rotomoulded fan and blade surfaces at the hub and the shroud level are open. The potential flow circulation through the blades could affect the fan performances, especially regarding the noise generation. Second, as a consequence of hollow blades, the rotomoulded fan has thicker blades which could change the initial fan design and thus the expected performances. One could notice that changing the blade thickness has been used for many years, in aeronautics and the automotive industry, as an efficient way to modify the lift and drag characteristics [2, 3], and the boundary layers detachment process [4]. The question is whether the extra thickness, in this case when applied to low-speed axial fans, increases the power of the elementary noise sources.

Finally, the rotomoulded fan is more and less deformed according to the angular velocity which again could change the initial design.

Therefore, the aim of this project is to determine the effects of the three points enumerated above on the global performances of the axial fans, and on the pressure fluctuations which occur in their wake. The study is carried out in three steps:

In the first step, only the blade thickness aspect is examined by using a rigid fan which has exactly the same

shape as the rotomoulded one, but made in aluminium, and was specially manufactured for this study. Its performances are compared with those of a reference fan that is made in aluminium and has thin blades. This study is presented in [5]. The conclusions of this study indicate that the global performances were substantially equivalent, with a drop of 8% of pressure elevation at conception flow rate for the thick blades fan and a maximum efficiency that is lower than the efficiency of the thin blades and that is shifted towards lower flow rates. The design point can be reached by a relative increase of rotational speed of 4% with the same power consumption. The spectral content of wall pressure fluctuations measured in a ducted-flow configuration is richer for the thick blades fan but the total level of pressure fluctuations is lower.

In the second step, the open surfaces at the blades shroud are closed for the rotomoulded fan and its performances are compared with those from the thick-blade milled fan. In this step, only the effects of the fan deformation are considered.

In the last step, the rotomoulded fan with open surfaces at the shroud level is tested and the new measurements are compared with those from the close-surface rotomoulded fan and from the milled fan.

In each step, the global characteristics are examined (efficiencies and pressure coefficients *vs.* flow coefficients curves) as well as the wall pressure fluctuation spectra. The present paper presents the results obtained in the last two steps enumerated above: the comparison of the aluminium and the rotomoulded thick-blade fans.

## II. EXPERIMENTAL SETUP

### A. Geometry of the two tested axial-flow fans

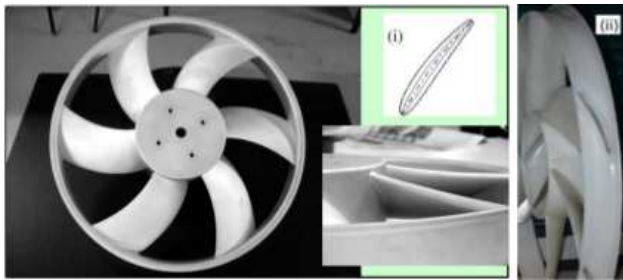


FIG. 1. Views of the thick blades fan. (i): Section of the thick and thin profiles. (ii): Rotomoulded fan with hollow blades

The fans used in this study are two prototypes developed for automotive engine cooling system application following the methods detailed in [6–8]. The fans have exactly the same geometrical characteristics with thick blades, one is rotomoulded and in plastic and the second is milled and in aluminium. Pictures of both fans are shown in Figure 1.

Each of these fans has six blades. The hub-to-tip radius ratio is  $R_{int}/R_{Max} = 0.337$  with the tip radius  $R_{Max} = 179$  mm. The rotor is built up from blades of circular-arc camber lines, with NACA4-digits-based profiles clipped at  $0.95x/c$ . The maximum blade thickness is 10 mm (whereas for the axial-flow thin blade fan is 4 mm). The blades are swept forward in order to increase the efficiency of the fan. Fukano et al. [9] have shown that fans with forward swept blades are superior to those with backward swept blades in terms of global and acoustical performances.

### B. Ducted-flow experimental facility

In order to compare the behaviour of the two fans in a ducted-flow configuration, a test bench was built according to the ISO-5801 standards [10], Figure 2. It consists of a cylindrical pipe of inner diameter  $D = 380$  mm. A bell mouth is flushmounted at the inlet of the duct. The upstream face of the fan is at a distance  $D$  from the pipe inlet. A DC-motor is hidden in a casing of diameter  $0.3D$  and length  $0.7D$ , with a warhead-shape end. The binding to the tube is ensured by five rods of diameter 8 mm, i.e.  $0.02D$ , in order to minimize their influence, regardless the flow rate. The distance between the upstream face of the fan and the binding rods is  $0.26 D$ . An anti-gyration device made of eight metal sheets of thickness 1.5 mm and length  $2D$  is placed  $2D$  downstream of the rotor-stator set. It prevents the outgoing flow from having any rotating component. The static pressure of the axial fan is measured  $1D$  downstream of the anti-gyration device, with an average over four flush-mounted pressure taps. The flow rate is measured with a normalized diaphragm, located  $10D$  downstream of the anti-gyration device and  $5D$  upstream of the pipe outlet. The diaphragm has a diameter of  $0.73D$ . Other diaphragms of various sizes are placed at the exit of the pipe to vary the test-bench hydraulic impedance and thereby to vary the operating point of the studied axial-flow fan. Wall pressure fluctuations are measured simultaneously by eight microphones that are evenly distributed on the circumference of the duct. They are mounted downstream of the fan, halfway between the fan and the five rods that ensure the binding to the tube (see Figure 2). The microphones are G.R.A.S 40BP 1/4" polarized pressure microphones of sensitivity  $1.65\text{mV}\cdot\text{Pa}^{-1}$ , with G.R.A.S 26AC preamplifiers and a G.R.A.S 12AG power supply module. The signals are amplified with a gain of +30 dB and high-pass filtered with a three-pole Butterworth filter with cut-off frequency of 20 Hz. The signals are then digitalized using a NI Data Acquisition Card (M6211, 16bits) at a sample rate of 12 kHz.

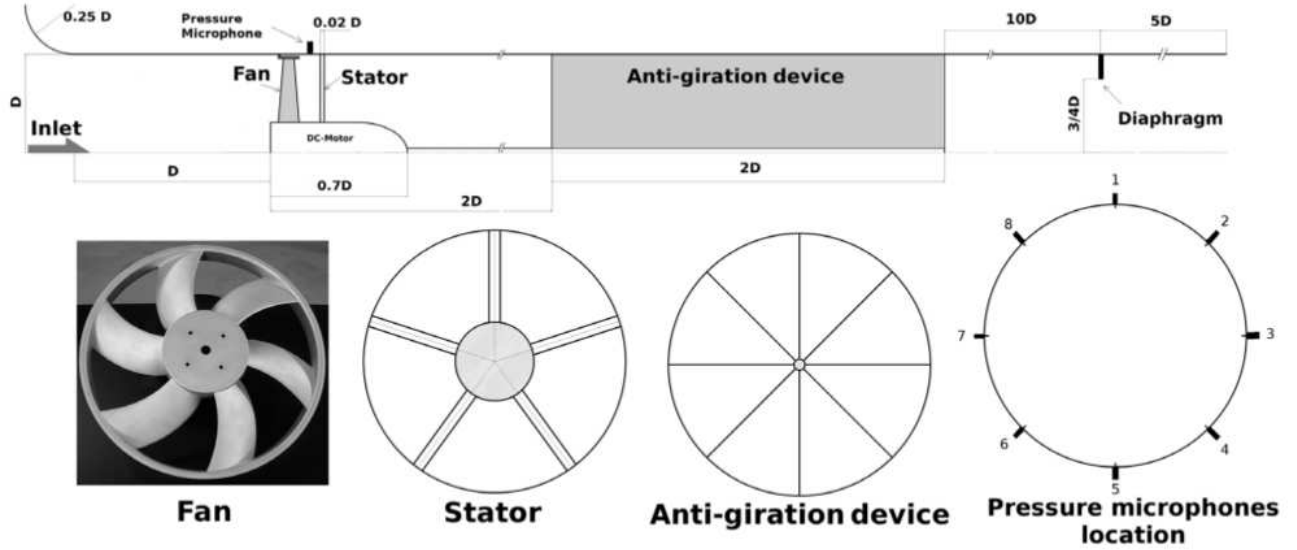


FIG. 2. Ducted-flow configuration dedicated to global and local measurements

### III. FAN GLOBAL CHARACTERISTICS

#### A. The influence of deformation on the rotomoulded fan

In this section, only the deformation of the rotomoulded fan is examined. Therefore, the open surfaces at the blades shroud were closed by rolling up scotch-tape all around the fan. Thus the potential effect of hollow blades is not taken into account. The characteristics and the efficiencies of the milled fan and the rotomoulded fan (with closed surfaces) are shown in Figures 3 and 4. Flow coefficient ( $\phi$ ) and pressure coefficient ( $\psi$ ) are defined respectively by equation (1) and (2):

$$\phi = \frac{qv}{\pi\omega R_{Max}^3} \quad (1)$$

$$\Psi = \frac{\Delta p}{\pi\omega^2 R_{Max}^2 / 2} \quad (2)$$

The efficiency is defined by equation (3):

$$\eta = \frac{\Delta p qv}{P_s} \quad (3)$$

The curves are the results of six measurements proceeded at  $\omega = 157 \text{ rad.s}^{-1}$  (1500 RPM). The three curves have the same shape. The nominal flow rate is the same ( $\phi = 0.15$ ) but the rotomoulded fan produces less depression than the milled fan, particularly at nominal flow rate where this difference reaches its maximum.

Clearly, the deformation of the rotomoulded fan affects significantly the pressure elevation of the fan. The maximum difference observed between both curves is about 6% at nominal operating point. On the other hand,

the efficiency of the rotomoulded fan, with closed surfaces, is not so much affected. Specially, at partial flow, both curves stick well together until the operating nominal zone where the efficiency of the rotomoulded fan decreases by 1% while is still acceptable.

One could notice that increasing the speed rotation by 6.67% allows to reach the curve of the milled fan.

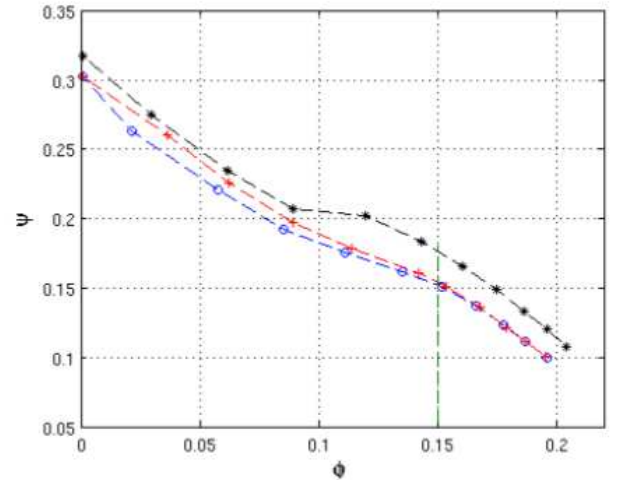


FIG. 3. Fan characteristics: pressure coefficient  $\Psi$  vs. flow coefficient  $\phi$ . \*: milled fan, +: rotomoulded with closed surfaces fan, o: rotomoulded with open surfaces fan

#### B. the effect of hollow blades

In this section, the hollow blades are kept open and the influence of the potential flow circulation inside the

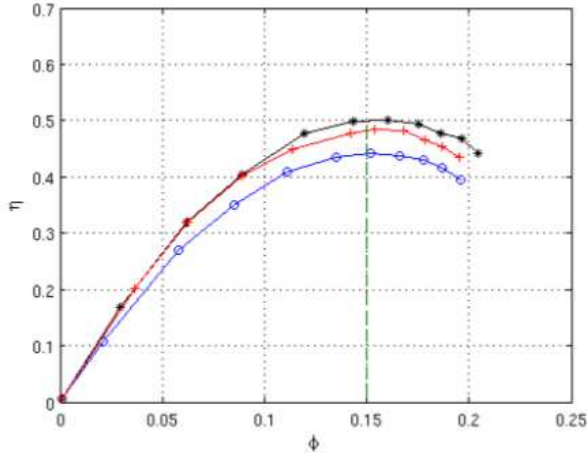


FIG. 4. Fan characteristics: fan efficiency  $\eta$  vs. flow coefficient  $\phi$ . \*: milled fan, +: rotomoulded with closed surfaces fan, o: rotomoulded with open surfaces fan

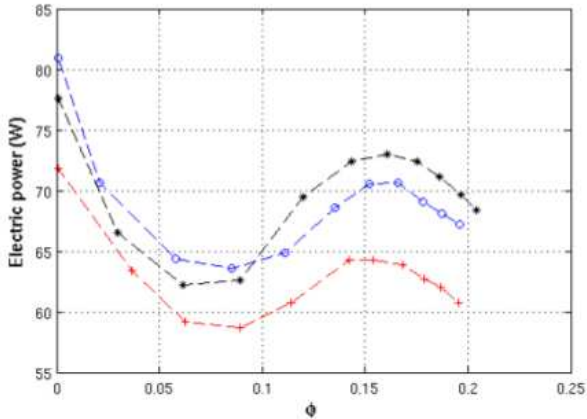


FIG. 5. Fan characteristics: electric power consumption vs. flow coefficient  $\phi$ . \*: milled fan, +: rotomoulded with closed surfaces fan, o: rotomoulded with open surfaces fan

blades is investigated. The characteristics and efficiencies, in this configuration are also plotted in Figures 3 and 4.

The characteristic curves of the rotomoulded fans with open and closed blades stick well together, particularly at overflow rates. So, one could conclude that there is no effect of closing the open surfaces. But, surprisingly the influence of closing the open surfaces appears on the efficiencies curves. The efficiency of the open surfaces fan is very low comparing to the other two curves although the fact that the open and closed surfaces fans have the same characteristics. Considering the definition of the efficiency, the electric power consumption curves were plotted for each case in Figure 5. These curves show that the power consumption of the rotomoulded fan with open surfaces is higher than the two other fans at partial flow rate, and at overflow rate it is the milled fan

which has the highest power consumption. Particularly, the power consumption of the closed surfaces fan is the lowest one among the three fans. This fact explains why the efficiency of the closed surfaces fan is so close to the efficiency of the milled fan. But the question is why the power consumption of the rotomoulded fan with closed surfaces is the lowest ?

From this global investigation and as a first conclusion, the rotomoulded fan shows promising possibilities. Some points have to be reviewed, in particular closing the hollow blades and making the fan more rigid by using another material which is conceivable with the rotomoulding process. We also intend to measure the deformation with high-speed imaging.

#### IV. PRESSURE FLUCTUATION

This section presents the measurements of the pressure fluctuation at the wall casing of the rotors' shroud. The three fans considered in this section are the same as above: the milled fan and the rotomoulded fans (with open and closed blades surfaces). For each fan, the wall pressure fluctuations were measured at three different flow rates: partial flow, nominal flow and overflow rates. All measurements were performed at  $\omega = 157.08 \text{ rad.s}^{-1}$  (1500 RPM) during 10 seconds corresponding approximately to 250 fan rotations, and sampled at 12 kHz. Then, the recorded signals were treated with matlab using the modified welch-average Fourier Transform and the obtained spectra  $S(f)$  are an average of seven 50% overlapping parts, windowed with a Hann window. The spectra  $S(f)$  are expressed in dB using the formula:

$$S(f) = 20 \log_{10} \frac{p'(f)}{p_0} \quad (4)$$

##### A. At nominal flow rate $\phi = 0.15$

The spectra of wall pressure fluctuations at nominal flow rate are displayed in Figure 6. The three fans exhibit relatively high discrete peaks, corresponding to the blade passing frequency  $f_{bpf}$  (150 Hz) and its harmonics. As expected, the rotomoulded fan with open surfaces has the highest peaks. Only the fundamental and the two first harmonics,  $2f_{bpf}$  and  $3f_{bpf}$ , can be identified on the rotomoulded fans (both open and closed surfaces). The level of the fundamental for the open surfaces rotomoulded fan is 13.73dB, -1.34 dB for the harmonic  $2f_{bpf}$  and -12.43 dB for the harmonic  $3f_{bpf}$ , whereas the closed surfaces rotomoulded fan fundamental is 10.9 dB and its first harmonic reaches -6.7 dB and the second harmonic -14.5 dB. A little decrease is observed when the hollow surfaces at the shroud level are closed.

On the other hand, the spectrum of the milled fan shows the fundamental and the four first harmonics. The

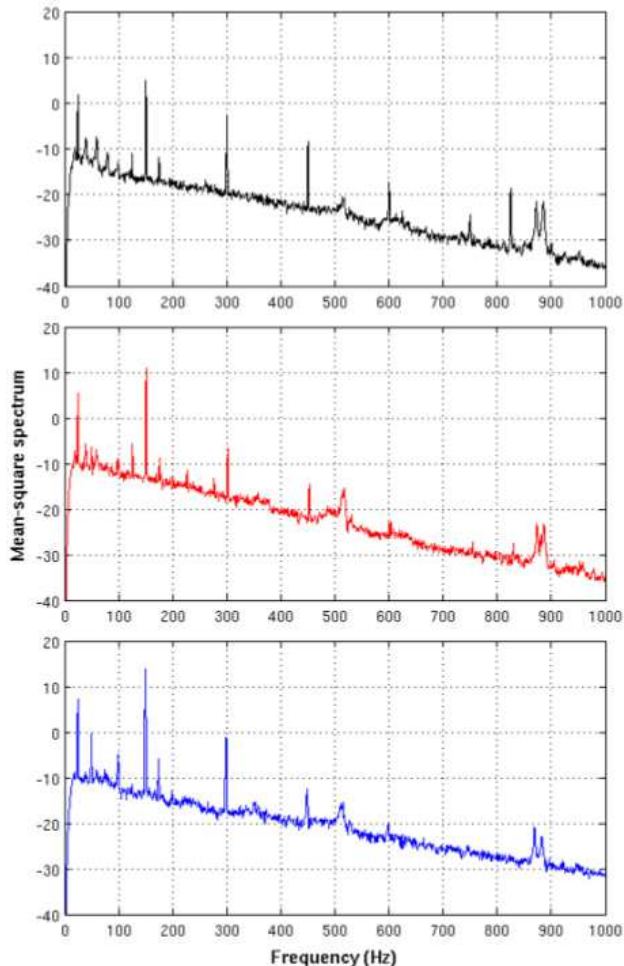


FIG. 6. Square amplitude spectra of wall pressure fluctuations at nominal flow rate  $\phi = 0.15$ . Milled fan (black), rotomoulded with closed surfaces fan (red) and rotomoulded with open surfaces fan (blue)

fundamental reaches no more than 5.0 dB. Table 1 summarizes these results.

	$f_{bpf}$	$2f_{bpf}$	$3f_{bpf}$	$4f_{bpf}$	$5f_{bpf}$
Milled fan	5	-2.98	-8.55	-17.38	-24.77
Rotomoulded, closed	10.9	-6.7	-14.5	-	-
Rotomoulded, open	13.73	-1.34	-12.43	-	-

TABLE I. Fundamental and harmonics peak values at nominal flow rate  $\phi = 0.15$ , in dB

Globally, both rotomoulded fans could be considered as similar. Their spectra reveal the fundamental and the two first harmonics with relatively high peaks. As for the milled fan, its spectrum reveals more harmonics, four, but generally with lower peaks than the rotomoulded fans.

In particular, all fans show in their spectra a peak at  $f=24.9$  Hz. This frequency corresponds to the rota-

tion frequency (1500 RPM/ 60 s). This fundamental could have till six harmonics, depending on the signals recorded. This frequency indicates that either the fan is mounted unbalanced or the deformation creates a dynamic unbalance generating this frequency. It was observed, that for rotomoulded fans, which are more deformed than the milled fan, the peak values are more important. This increase could be explained by a more important dynamic unbalance on the rotomoulded fans as a consequence of the fan deformation.

## B. At partial flow rate $\phi = 0.09$

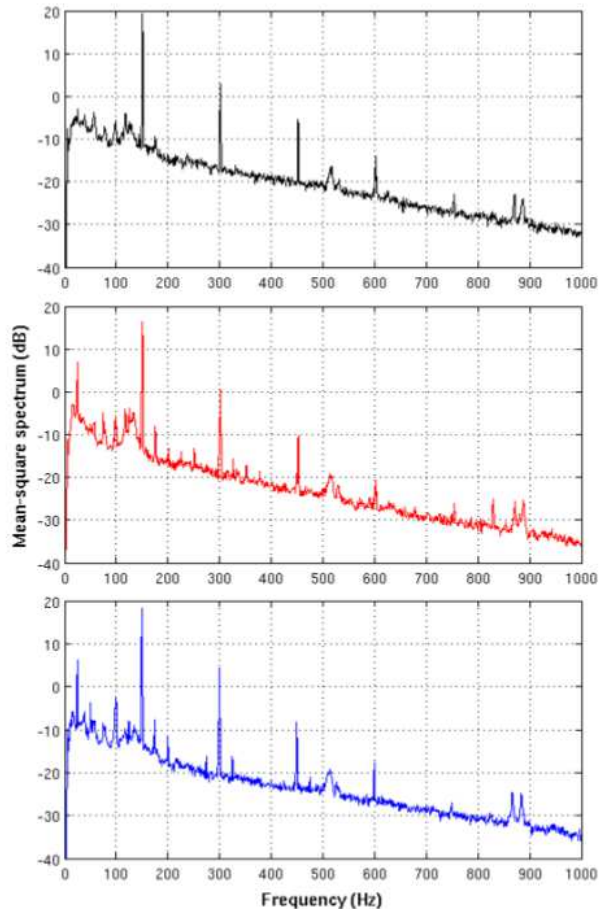


FIG. 7. Square amplitude spectra of wall pressure fluctuations at partial flow rate  $\phi = 0.09$ . Milled fan (black), rotomoulded with closed surfaces fan (red) and rotomoulded with open surfaces fan (blue)

The spectra at partial flow rate (Figure 7) are similar to those from the nominal flow rate with differences only in their peak levels. Surprisingly, the fundamental of the milled fan has the maximum value of 19.29 dB, followed by the fundamental of the open surfaces rotomoulded fan which reaches 18.15 dB and eventually, the closed surfaces rotomoulded fan which reaches 16.26 dB what

is the lowest peak among all peaks. Table 2 shows the fundamental and their harmonics at partial flow.

	$f_{bpf}$	$2f_{bpf}$	$3f_{bpf}$	$4f_{bpf}$	$5f_{bpf}$
Milled fan	19.26	2.97	-5.39	-13.99	-22.97
Rotomoulded, closed	16.26	0.57	-10.36	-20.66	-27.44
Rotomoulded, open	18.15	4.41	-8.25	-19.44	-27.01

TABLE II. Fundamental and harmonics peak values at partial flow rate  $\phi = 0.09$ , in dB

According to Table 2, at partial flow, the rotomoulded fans' harmonics are amplified. The rotational speed frequency and its harmonics are still observed but only for the rotomoulded fans at partial flow rate, implying same conclusions as before.

### C. At over-flow rate $\phi = 0.20$

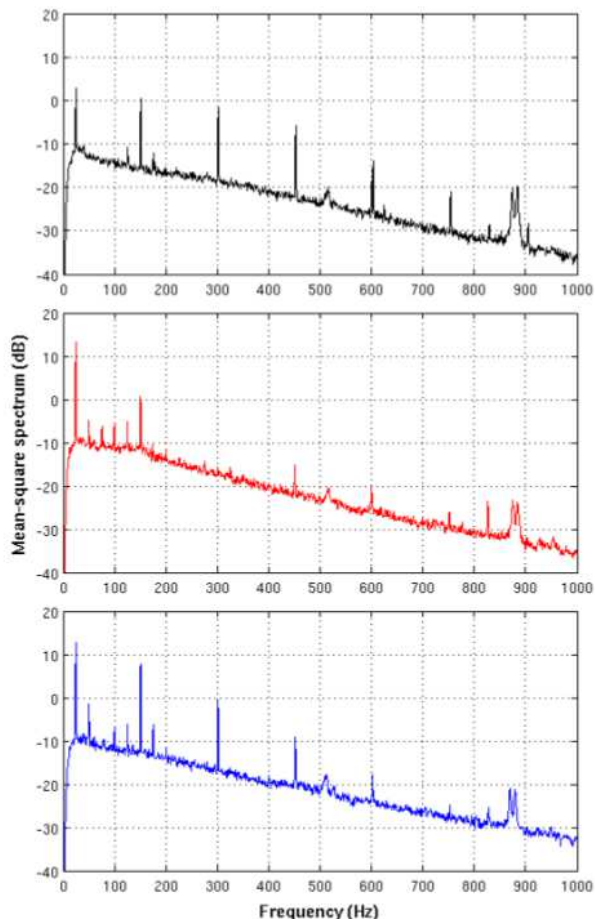


FIG. 8. Square amplitude spectra of wall pressure fluctuations at over-flow flow rate  $\phi = 0.20$ . Milled fan (black), rotomoulded with closed surfaces fan (red) and rotomoulded with open surfaces fan (blue)

At over-flow rate the peaks level globally decreases (Figure 8). The spectrum of the milled fan still shows more harmonics than the other spectra but with lower peak height for the fundamental and for the first harmonic. From the second harmonic, the peaks level is lower for the rotomoulded fan with open surfaces, Table 3. Regarding the rotomoulded fan with closed surfaces, it was observed that the second harmonic disappeared from the spectrum.

	$f_{bpf}$	$2f_{bpf}$	$3f_{bpf}$	$4f_{bpf}$	$5f_{bpf}$
Milled fan	0.54	-1.61	-5.77	-13.83	-22.01
Rotomoulded, closed	0.68	-	-15.03	-20.44	-26.25
Rotomoulded, open	7.88	-0.59	-9.05	-17.67	-

TABLE III. Fundamental and harmonics peak values at over-flow flow rate  $\phi = 0.20$ , in dB

## V. CONCLUSION

This experimental study allowed to better understand the effects of blade rigidity on fans used in the cooling system of an automotive vehicle power unit. The considered configurations were: a milled fan in aluminium, a rotomoulded fan with hollow blades and the same hollow blade fan but with closed surfaces at the shroud level. All of these fans have exactly the same shape and the same thickness but differ by their material (aluminium and plastic). The study was divided into two parts:

The global characteristics investigation of each fan showed that a maximum drop depression of 6% is observed between the milled fan and the rotomoulded one at nominal flow rate. It also showed that closing the open surfaces at the shroud does not change that much the pressure head of the rotomoulded fan. The most annoying point is the deformation of the rotomoulded fan during operation. But this problem could be solved by using a more rigid material.

The second part of this study was about the local pressure fluctuations at the wall casing. Three flow rates were investigated and used to compare the two fans: At partial flow rate, nominal flow rate and over-flow rate. Then, the PSD of each measurements were displayed using the modified Welch-average Fourier Transform. Even if any conclusion about the acoustical matter of the fan can not be drawn, the peak values are lower for the milled fan. The deformation of the rotomoulded fan in operating could explain these high peaks.

Despite these small drawbacks of the base rotomoulded fan, they have encouraging global performances. Solutions that give more rigidity to the blades have to be tested. On the long term, there is good hope that the rotomoulding process replaces the usual plastic injection process for small series.

Further investigations are needed to better understand the effects of the blades thickness. Finite element analysis

of the full wheel will be carried out to see the amplitude of mode shapes. Also, local LDV and PIV measurements and numerical simulations will be performed in order to highlight flow separation process, unsteadiness around fan blades and wake interactions.

These measurements will be used as a benchmark for high-order finite volume CFD codes developed for aeroacoustics in the laboratory, and data are also available on request.

## VI. REFERENCES

[1] Tcharkhtchi, A., 2004. "Rotomoulding of thermo-plastic parts". *Techniques de l'Ingénieur — Plastiques et Composites*, AM4(AM3706), pp. AM3706.1–15.

[2] Thwaites, B., 1985. *Incompressible Aerodynamics, An account of the Theory and Observation of the steady Flow of incompressible Fluid past Aerofiles, Wings, and Other Bodies*. Hoerner Fluid Dynamics.

[3] Hoerner, S. F., 1987. *Fluid-Dynamic Lift*. Dover Publication Inc.

[4] Sarraf, C., Djeridi, H., and Billard, J., 2008. "Effets d'épaisseur et couche limite sur profil portant. Effets de l'épaisseur des profils naca symétriques sur leurs performances et l'état de la couche limite turbulente". *European Journal of Environmental and Civil Engineering*,

12(5), pp. 587–599.

[5] Sarraf, C., Ravelet, F., Nouri, H., and Bakir, F., 2010. "Experimental study of blade thickness effects on the global and local performances of axial-flow fans". In *7th International Conference on Heat Transfer, Fluid Mechanics and Thermodynamics*, Antalya, Turkey, pp. 1428 <http://hal.archives-ouvertes.fr/hal-00453101/>.

[6] Noguera, R., Rey, R., Massouh, F., Bakir, F., and Kouidri, S., 1993. "Design and analysis of axial pumps". In *ASME Fluids Engineering, Second Pumping Machinery Symposium*, Washington, USA, pp. 95–111.

[7] Bakir, F., Rey, R., and Moreau, S., 1999. "Latest developments in automotive engine cooling fan systems rotor-stator interactions". In *FEDSM99-7331*, San Francisco, USA, p. 7331.

[8] Bakir, F., Moreau, S., Rey, R., Henner, M., and Borg, V., 2003. "Experimental aeroacoustic analysis of efficient automotive engine cooling fan systems". In *Fan Noise 2nd Int. Symp.*, Senlis, France, p. 18.

[9] Fukano, T., Kodama, Y., and Takamatsu, Y., 1978. "Noise generated by low pressure axial flow fans, iii: Effects of rotational frequency, blade thickness and outer blade profile". *Journal of Sound and Vibration*, 56(2), pp. 261–277.

[10] 5801, I., 2007. *Industrial fans Performance testing using standardized airways*. International Standards for