



HAL
open science

Basic properties of the Multivariate Fractional Brownian Motion

Pierre-Olivier Amblard, Jean-François Coeurjolly, Frédéric Lavancier, Anne Philippe

► **To cite this version:**

Pierre-Olivier Amblard, Jean-François Coeurjolly, Frédéric Lavancier, Anne Philippe. Basic properties of the Multivariate Fractional Brownian Motion. Séminaires et congrès, 2013, 28, pp.65-87. hal-00497639v2

HAL Id: hal-00497639

<https://hal.science/hal-00497639v2>

Submitted on 25 Apr 2012

HAL is a multi-disciplinary open access archive for the deposit and dissemination of scientific research documents, whether they are published or not. The documents may come from teaching and research institutions in France or abroad, or from public or private research centers.

L'archive ouverte pluridisciplinaire **HAL**, est destinée au dépôt et à la diffusion de documents scientifiques de niveau recherche, publiés ou non, émanant des établissements d'enseignement et de recherche français ou étrangers, des laboratoires publics ou privés.

BASIC PROPERTIES OF THE MULTIVARIATE FRACTIONAL BROWNIAN MOTION

PIERRE-OLIVIER AMBLARD, JEAN-FRANÇOIS COEURJOLLY, FRÉDÉRIC LAVANCIER,
AND ANNE PHILIPPE

ABSTRACT. This paper reviews and extends some recent results on the multivariate fractional Brownian motion (mfBm) and its increment process. A characterization of the mfBm through its covariance function is obtained. Similarly, the correlation and spectral analyses of the increments are investigated. On the other hand we show that (almost) all mfBm's may be reached as the limit of partial sums of (super)linear processes. Finally, an algorithm to perfectly simulate the mfBm is presented and illustrated by some simulations.

1. INTRODUCTION

The fractional Brownian motion is the unique Gaussian self-similar process with stationary increments. In the seminal paper of Mandelbrot and Van Ness [22], many properties of the fBm and its increments are developed (see also [30] for a review of the basic properties). Depending on the scaling factor (called Hurst parameter), the increment process may exhibit long-range dependence, and is commonly used in modeling physical phenomena. However in many fields of applications (e.g. neuroscience, economy, sociology, physics, etc), multivariate measurements are performed and they involve specific properties such as fractality, long-range dependence, self-similarity, etc. Examples can be found in economic time series (see [11], [14], [15]), genetic sequences [2], multipoint velocity measurements in turbulence, functional Magnetic Resonance Imaging of several regions of the brain [1].

It seems therefore natural to extend the fBm to a multivariate framework. Recently, this question has been investigated in [20, 19, 5]. The aim of this paper is to summarize and to complete some of these advances on the multivariate fractional Brownian motion and its increments. A multivariate extension of the fractional Brownian motion can be stated as follows :

Definition 1. *A Multivariate fractional Brownian motion (p -mfBm or mfBm) with parameter $H \in (0, 1)^p$ is a p -multivariate process satisfying the three following properties*

- *Gaussianity,*

1991 *Mathematics Subject Classification.* 26A16, 28A80, 42C40.

Key words and phrases. Self similarity ; Multivariate process ; Long-range dependence ; Superlinear process ; Increment process ; Limit theorem.

Research supported in part by ANR STARAC grant and a fellowship from Région Rhône-Alpes (France) and a Marie-Curie International Outgoing Fellowship from the European Community.

Research supported in part by ANR InfoNetComaBrain grant.

- *Self-similarity with parameter $H \in (0, 1)^p$,*
- *Stationarity of the increments.*

Here, self-similarity has to be understood as joint self-similarity. More formally, we use the following definition.

Definition 2. *A multivariate process $(X(t) = (X_1(t), \dots, X_p(t)))_{t \in \mathbb{R}}$ is said self-similar if there exists a vector $H = (H_1, \dots, H_p) \in (0, 1)^p$ such that for any $\lambda > 0$,*

$$(1) \quad (X_1(\lambda t), \dots, X_p(\lambda t))_{t \in \mathbb{R}} \stackrel{\text{fidi}}{=} (\lambda^{H_1} X_1(t), \dots, \lambda^{H_p} X_p(t))_{t \in \mathbb{R}},$$

where $\stackrel{\text{fidi}}{=}$ denotes the equality of finite-dimensional distributions. The parameter H is called the self-similarity parameter.

This definition can be viewed as a particular case of operator self-similar processes by taking diagonal operators (see [12, 16, 17, 21]).

Note that, as in the univariate case [18], the Lamperti transformation induces an isometry between the self-similar and the stationary multivariate processes. Indeed, from Definition 2, it is not difficult to check that $(Y(t))_{t \in \mathbb{R}}$ is a p -multivariate stationary process if and only if there exists $H \in (0, 1)^p$ such that its Lamperti transformation $(t^{H_1} Y_1(\log(t)), \dots, t^{H_p} Y_p(\log(t)))_{t \in \mathbb{R}}$ is a p -multivariate self-similar process.

The paper is organized as follows. In Section 2, we study the covariance structure of the mfBm and its increments. The cross-covariance and the cross-spectral density of the increments lead to interesting long-memory type properties. Section 3 contains the time domain as well as the spectral domain stochastic integral representations of the mfBm. Thanks to these results we obtain a characterization of the mfBm through its covariance matrix function. Section 4 is devoted to limit theorems, the mfBm is obtained as the limit of partial sums of linear processes. Finally, we discuss in Section 5 the problem of simulating sample paths of the mfBm. We propose to use the Wood and Chan's algorithm [32] well adapted to generate multivariate stationary Gaussian random fields with prescribed covariance matrix function.

2. DEPENDENCE STRUCTURE OF THE MFBM AND OF ITS INCREMENTS

2.1. Covariance function of the mfBm. In this part, we present the form of the covariance matrix of the mfBm.

Firstly, as each component is a fractional brownian motion, the covariance function of the i -th component is well-known and we have

$$(2) \quad \mathbb{E}X_i(s)X_i(t) = \frac{\sigma_i^2}{2} \{ |s|^{2H_i} + |t|^{2H_i} - |t-s|^{2H_i} \}.$$

with $\sigma_i^2 := \text{var}(X_i(1))$. The cross covariances are given in the following proposition.

Proposition 3 (Lavancier *et al.* [20]). *The cross covariances of the mfBm satisfy the following representation, for all $(i, j) \in \{1, \dots, p\}^2$, $i \neq j$,*

(1) If $H_i + H_j \neq 1$, there exists $(\rho_{i,j}, \eta_{i,j}) \in [-1, 1] \times \mathbb{R}$ with $\rho_{i,j} = \rho_{j,i} = \text{corr}(X_i(1), X_j(1))$ and $\eta_{i,j} = -\eta_{j,i}$ such that

$$(3) \quad \mathbb{E}X_i(s)X_j(t) = \frac{\sigma_i \sigma_j}{2} \left\{ (\rho_{i,j} + \eta_{i,j} \text{sign}(s)) |s|^{H_i + H_j} + (\rho_{i,j} - \eta_{i,j} \text{sign}(t)) |t|^{H_i + H_j} - (\rho_{i,j} - \eta_{i,j} \text{sign}(t-s)) |t-s|^{H_i + H_j} \right\}.$$

(2) If $H_i + H_j = 1$, there exists $(\tilde{\rho}_{i,j}, \tilde{\eta}_{i,j}) \in [-1, 1] \times \mathbb{R}$ with $\tilde{\rho}_{i,j} = \tilde{\rho}_{j,i} = \text{corr}(X_i(1), X_j(1))$ and $\tilde{\eta}_{i,j} = -\tilde{\eta}_{j,i}$ such that

$$(4) \quad \mathbb{E}X_i(s)X_j(t) = \frac{\sigma_i \sigma_j}{2} \left\{ \tilde{\rho}_{i,j} (|s| + |t| - |s-t|) + \tilde{\eta}_{i,j} (t \log |t| - s \log |s| - (t-s) \log |t-s|) \right\}.$$

Proof. Under some conditions of regularity, Lavancier *et al.* [20] actually prove that Proposition 3 is true for any L^2 self-similar multivariate process with stationary increments. The form of cross covariances is obtained as the unique solution of a functional equation. Formulae (3) and (4) correspond to expressions given in [20] after the following reparameterization : $\rho_{i,j} = (c_{i,j} + c_{j,i})/2$ and $\eta_{i,j} = (c_{i,j} - c_{j,i})/2$ where $c_{i,j}$ and $c_{j,i}$ arise in [20]. □

Remark 1. Extending the definition of parameters $\rho_{i,j}, \tilde{\rho}_{i,j}, \eta_{i,j}, \tilde{\eta}_{i,j}$ to the case $i = j$, we have $\rho_{i,i} = \tilde{\rho}_{i,i} = 1$ and $\eta_{i,i} = \tilde{\eta}_{i,i} = 0$, so that (2) coincides with (3) and (4).

Remark 2. The constraints on coefficients $\rho_{i,j}, \tilde{\rho}_{i,j}, \eta_{i,j}, \tilde{\eta}_{i,j}$ are necessary but not sufficient conditions to ensure that the functions defined by (3) and (4) are covariance functions. This problem will be discussed in Section 3.4.

Remark 3. Note that coefficients $\rho_{i,j}, \tilde{\rho}_{i,j}, \eta_{i,j}, \tilde{\eta}_{i,j}$ depend on the parameters (H_i, H_j) . Assuming the continuity of the cross covariances function with respect to the parameters (H_i, H_j) , the expression (4) can be deduced from (3) by taking the limit as $H_i + H_j$ tends to 1, noting that $((s+1)^H - s^H - 1)/(1-H) \rightarrow s \log |s| - (s+1) \log |s+1|$ as $H \rightarrow 1$. We obtain the following relations between the coefficients : as $H_i + H_j \rightarrow 1$

$$\rho_{i,j} \sim \tilde{\rho}_{i,j} \quad \text{and} \quad (1 - H_i - H_j) \eta_{i,j} \sim \tilde{\eta}_{i,j}.$$

This convergence result can suggest a reparameterization of coefficients $\eta_{i,j}$ in $(1 - H_i - H_j) \eta_{i,j}$.

2.2. The increments process. This part aims at exploring the covariance structure of the increments of size δ of a multivariate fractional Brownian motion given by Definition 1. Let $\Delta_\delta X = (X(t+\delta) - X(t))_{t \in \mathbb{R}}$ denotes the increment process of the multivariate fractional Brownian motion of size δ and let $\Delta_\delta X_i$ be its i -th component.

Let $\gamma_{i,j}(h, \delta) = \mathbb{E} \Delta_\delta X_i(t) \Delta_\delta X_j(t+h)$ denotes the cross-covariance of the increments of size δ of the components i and j . Let us introduce the function $w_{i,j}(h)$ given by

$$(5) \quad w_{i,j}(h) = \begin{cases} (\rho_{i,j} - \eta_{i,j} \text{sign}(h)) |h|^{H_i + H_j} & \text{if } H_i + H_j \neq 1, \\ \tilde{\rho}_{i,j} |h| + \tilde{\eta}_{i,j} h \log |h| & \text{if } H_i + H_j = 1. \end{cases}$$

Then from Proposition 3, we deduce that $\gamma_{i,j}(h, \delta)$ is given by

$$(6) \quad \gamma_{i,j}(h, \delta) = \frac{\sigma_i \sigma_j}{2} \left(w_{i,j}(h - \delta) - 2w_{i,j}(h) + w_{i,j}(h + \delta) \right).$$

Now, let us present the asymptotic behaviour of the cross-covariance function.

Proposition 4. *As $|h| \rightarrow +\infty$, we have for any $\delta > 0$*

$$(7) \quad \gamma_{i,j}(h, \delta) \sim \sigma_i \sigma_j \delta^2 |h|^{H_i + H_j - 2} \kappa_{i,j}(\text{sign}(h)),$$

with

$$(8) \quad \kappa_{i,j}(\text{sign}(h)) = \begin{cases} (\rho_{i,j} - \eta_{i,j} \text{sign}(h))(H_i + H_j)(H_i + H_j - 1) & \text{if } H_i + H_j \neq 1, \\ \tilde{\eta}_{i,j} \text{sign}(h) & \text{if } H_i + H_j = 1. \end{cases}$$

Proof. Let $\alpha = H_i + H_j$. Let us choose h , such that $|h| \geq \delta$, which ensures that $\text{sign}(h - \delta) = \text{sign}(h) = \text{sign}(h + \delta)$. When $\alpha \neq 1$, this allows us to write

$$\gamma_{i,j}(h, \delta) = \frac{\sigma_i \sigma_j}{2} |h|^\alpha (\rho_{i,j} - \eta_{i,j} \text{sign}(h)) B(h),$$

with $B(h) = \left(1 - \frac{\delta}{h}\right)^\alpha - 2 + \left(1 + \frac{\delta}{h}\right)^\alpha \sim \alpha(\alpha - 1)\delta^2 h^{-2}$, as $|h| \rightarrow +\infty$. When $\alpha = 1$ and $|h| \geq \delta$, $\gamma_{i,j}(h, \delta)$ reduces to

$$\gamma_{i,j}(h, \delta) = \frac{\sigma_i \sigma_j}{2} \tilde{\eta}_{i,j} B(h) \quad \text{with} \quad B(h) = \left((h - \delta) \log \left(1 - \frac{\delta}{h} \right) + (h + \delta) \log \left(1 + \frac{\delta}{h} \right) \right).$$

Using the expansion of $\log(1 \pm x)$ as $x \rightarrow 0$ leads to $B(h) \sim \delta^2 |h|^{-1}$ as $|h| \rightarrow +\infty$, which implies the result. \square

Proposition 4 and (6) lead to the following important remarks on the dependence structure. For $i \neq j$ and $H_i + H_j \neq 1$:

- If the two fractional Gaussian noises are short-range dependent (i.e. $H_i < 1/2$ and $H_j < 1/2$) then they are either short-range interdependent if $\rho_{i,j} \neq 0$ or $\eta_{i,j} \neq 0$, or independent if $\rho_{i,j} = \eta_{i,j} = 0$.
- If the two fractional Gaussian noises are long-range dependent (i.e. $H_i > 1/2$ and $H_j > 1/2$) then they are either long-range interdependent if $\rho_{i,j} \neq 0$ or $\eta_{i,j} \neq 0$, or independent if $\rho_{i,j} = \eta_{i,j} = 0$. This confirms the dichotomy principle observed in [12].
- In the other cases, the two fractional Gaussian noises can be short-range interdependent if $\rho_{i,j} \neq 0$ or $\eta_{i,j} \neq 0$ and $H_i + H_j < 1$, long-range interdependent if $\rho_{i,j} \neq 0$ or $\eta_{i,j} \neq 0$ and $H_i + H_j > 1$ or independent if $\rho_{i,j} = \eta_{i,j} = 0$.

Moreover, note that when $H_i + H_j = 1$, whatever the nature of the two fractional Gaussian noises (i.e. short-range or long-range dependent, or even independent), they are either long-range interdependent if $\tilde{\eta}_{i,j} \neq 0$ or independent if $\tilde{\eta}_{i,j} = 0$.

The following result characterizes the spectral nature of the increments of a mfBm.

Proposition 5 (Coeurjolly *et al.* [5]). *Let $S_{i,j}(\cdot, \delta)$ be the (cross)-spectral density of the increments of size δ of the components i and j , i.e. the Fourier transform of $\gamma_{i,j}(\cdot, \delta)$*

$$S_{i,j}(\omega, \delta) = \frac{1}{2\pi} \int_{\mathbb{R}} e^{-i h \omega} \gamma_{i,j}(h, \delta) dh =: FT(\gamma_{i,j}(\cdot, \delta)).$$

(i) *For all i, j and for all H_i, H_j , we have*

$$(9) \quad S_{i,j}(\omega, \delta) = \frac{\sigma_i \sigma_j}{\pi} \Gamma(H_i + H_j + 1) \frac{1 - \cos(\omega \delta)}{|\omega|^{H_i + H_j + 1}} \times \tau_{i,j}(\text{sign}(\omega)),$$

where

$$(10) \quad \tau_{i,j}(\text{sign}(\omega)) = \begin{cases} \rho_{i,j} \sin\left(\frac{\pi}{2}(H_i + H_j)\right) - \mathbf{i} \eta_{i,j} \text{sign}(\omega) \cos\left(\frac{\pi}{2}(H_i + H_j)\right) & \text{if } H_i + H_j \neq 1, \\ \tilde{\rho}_{i,j} - \mathbf{i} \frac{\pi}{2} \tilde{\eta}_{i,j} \text{sign}(\omega) & \text{if } H_i + H_j = 1. \end{cases}$$

(ii) *For any fixed δ , when $H_i + H_j \neq 1$ then we have, as $\omega \rightarrow 0$,*

(11)

$$|S_{i,j}(\omega, \delta)| \sim \frac{\sigma_i \sigma_j}{2\pi} \Gamma(H_i + H_j + 1) \delta^2 \frac{\left(\rho_{i,j}^2 \sin\left(\frac{\pi}{2}(H_i + H_j)\right)^2 + \eta_{i,j}^2 \cos\left(\frac{\pi}{2}(H_i + H_j)\right)^2\right)^{1/2}}{|\omega|^{H_i + H_j - 1}}.$$

(iii) *Moreover, when $H_i + H_j \neq 1$, the coherence function between the two components i and j satisfies, for all ω*

$$(12) \quad \begin{aligned} C_{i,j}(\omega, \delta) &:= \frac{|S_{i,j}(\omega, \delta)|^2}{S_{i,i}(\omega, \delta) S_{j,j}(\omega, \delta)} \\ &= \frac{\Gamma(H_i + H_j + 1)^2}{\Gamma(2H_i + 1) \Gamma(2H_j + 1)} \frac{\rho_{i,j}^2 \sin\left(\frac{\pi}{2}(H_i + H_j)\right)^2 + \eta_{i,j}^2 \cos\left(\frac{\pi}{2}(H_i + H_j)\right)^2}{\sin(\pi H_i) \sin(\pi H_j)}. \end{aligned}$$

(iv) *When $H_i + H_j = 1$, (11) and (12) hold, replacing $\rho_{i,j}^2 \sin\left(\frac{\pi}{2}(H_i + H_j)\right)^2 + \eta_{i,j}^2 \cos\left(\frac{\pi}{2}(H_i + H_j)\right)^2$ by $\tilde{\rho}_{i,j}^2 + \frac{\pi^2}{4} \tilde{\eta}_{i,j}^2$.*

Proof. The proof is essentially based on the fact that in the generalized function sense, for $\alpha > -1$,

$$\begin{aligned} FT(|h|^\alpha) &= -\frac{1}{\pi} \Gamma(\alpha + 1) \sin\left(\frac{\pi}{2}\alpha\right) |\omega|^{-\alpha-1}, \\ FT(h_+^\alpha) &= \frac{1}{2\pi} \Gamma(\alpha + 1) e^{-\mathbf{i} \text{sign}(\omega) \frac{\pi}{2}(\alpha+1)} |\omega|^{-\alpha-1}, \\ FT(h_-^\alpha) &= \frac{1}{2\pi} \Gamma(\alpha + 1) e^{\mathbf{i} \text{sign}(\omega) \frac{\pi}{2}(\alpha+1)} |\omega|^{-\alpha-1}, \\ FT(h \log |h|) &= \mathbf{i} \frac{\text{sign}(\omega)}{2\omega^2}. \end{aligned}$$

See [5] for more details. □

Remark 4. *From this proposition, we retrieve the same properties of dependence and interdependence of X_i and X_j as stated after Proposition 4.*

2.3. Time reversibility. A stochastic process is said to be time reversible if $X(t) = X(-t)$ for all t . As shows in [12], this is equivalent for zero-mean multivariate Gaussian stationary processes to $\mathbb{E}X_i(t)X_j(s) = \mathbb{E}X_i(s)X_j(t)$ for $s, t \in \mathbb{R}$ or that the cross covariance of the increments satisfies $\gamma_{i,j}(h, \delta) = \gamma_{i,j}(-h, \delta)$ for $h \in \mathbb{R}$. The following proposition characterizes this property.

Proposition 6. *A mfBm is time reversible if and only if $\eta_{i,j} = 0$ (or $\tilde{\eta}_{i,j} = 0$) for all $i, j = 1, \dots, p$.*

Proof. If $\eta_{i,j} = 0$ (or $\tilde{\eta}_{i,j} = 0$), $\gamma_{i,j}(h, \delta)$ is proportional to the covariance of a fractional Gaussian noise with Hurst parameter $(H_i + H_j)/2$ and is therefore symmetric. Let us prove the converse. Let $\alpha = H_i + H_j$, then

$$\begin{aligned} \gamma_{i,j}(h, \delta) - \gamma_{i,j}(-h, \delta) &= \sigma_i \sigma_j \times \\ &\begin{cases} -\eta_{i,j} (\text{sign}(h - \delta)|h - \delta|^\alpha + 2\text{sign}(h)|h|^\alpha - \text{sign}(h + \delta)|h + \delta|^\alpha) & \text{if } \alpha \neq 1, \\ \tilde{\eta}_{i,j} ((h - \delta) \log |h - \delta| - 2h \log |h| + (h + \delta) \log |h + \delta|) & \text{if } \alpha = 1. \end{cases} \end{aligned}$$

Assuming $\gamma_{i,j}(h, \delta) - \gamma_{i,j}(-h, \delta)$ equals zero for all h leads to $\eta_{i,j} = 0$ (or $\tilde{\eta}_{i,j} = 0$). \square

Remark 5. *This result can also be viewed from a spectral point view. The time reversibility of a mfBm is equivalent to the fact that the spectral density matrix is real. Using (9), this implies $\eta_{i,j} = 0$ (or $\tilde{\eta}_{i,j} = 0$).*

3. INTEGRAL REPRESENTATION

3.1. Spectral representation. The following proposition contains the spectral representation of mfBm. This representation will be especially useful to obtain a condition easy to verify which ensures that the functions defined by (3) and (4) are covariance functions.

Theorem 7 (Didier and Pipiras, [12]). *Let $(X(t))_{t \in \mathbb{R}}$ be a mfBm with parameter $(H_1, \dots, H_p) \in (0, 1)^p$. Then there exists a $p \times p$ complex matrix A such that each component admits the following representation*

$$(13) \quad X_i(t) = \sum_{j=1}^p \int \frac{e^{itx} - 1}{ix} (A_{ij} x_+^{-H_i+1/2} + \bar{A}_{ij} x_-^{-H_i+1/2}) \tilde{B}_j(dx),$$

where for all $j = 1, \dots, p$, \tilde{B}_j is a Gaussian complex measure such that $\tilde{B}_j = \tilde{B}_{j,1} + i\tilde{B}_{j,2}$ with $\tilde{B}_{j,1}(x) = \tilde{B}_{j,1}(-x)$, $\tilde{B}_{j,2}(x) = -\tilde{B}_{j,2}(x)$, $\tilde{B}_{j,1}$ and $\tilde{B}_{j,2}$ are independent and $E(\tilde{B}_{j,i}(dx)\tilde{B}_{j,i}(dx)') = dx$, $i = 1, 2$.

Conversely, any p -multivariate process satisfying (13) is a mfBm process.

Proof. This representation is deduced from the general spectral representation of operator fractional Brownian motions obtained in [12]. By denoting $-\mathbb{H} + 1/2 := \text{diag}(-H_1 +$

$1/2, \dots, -H_p + 1/2$) we have indeed

$$(14) \quad X(t) = \int \frac{e^{itx} - 1}{ix} (x_+^{-\mathbb{H}+1/2} A + x_-^{-\mathbb{H}+1/2} \bar{A}) \tilde{B}(dx).$$

□

Any mfBm having representation (13) has a covariance function as in Proposition 3. The coefficients $\rho_{i,j}$, $\eta_{i,j}$, $\tilde{\rho}_{i,j}$ and $\tilde{\eta}_{i,j}$ involved in (3) and (4) satisfy

$$(15) \quad (AA^*)_{i,j} = \frac{\sigma_i \sigma_j}{2\pi} \Gamma(H_i + H_j + 1) \tau_{i,j}(1),$$

where $\tau_{i,j}$ is given in (10) and where A^* is the transpose matrix of \bar{A} . This relation is obtained by identification of the spectral matrix of the increments deduced on the one hand from (13) and provided on the other hand in Proposition 5.

Given (13), relation (15) provides easily the coefficients $\rho_{i,j}$, $\eta_{i,j}$, $\tilde{\rho}_{i,j}$ and $\tilde{\eta}_{i,j}$ which define the covariance function. The converse is more difficult to obtain. Given a covariance function as in Proposition 3, obtaining the explicit representation (13) requires finding a matrix A such that (15) holds. This choice is possible if and only if the matrix on the right hand side of (15) is positive semidefinite. Then a matrix A (which is not unique) may be deduced by the Cholesky decomposition. When $p = 2$, an explicit solution is the matrix with entries, for $i, j = 1, 2$,

$$A_{i,j} = \lambda_{i,j} \left[\left(\rho_{i,j} \sin\left(\frac{\pi}{2}(H_i + H_j)\right) + \eta_{i,j} \sqrt{\frac{1 - C_{i,j}}{C_{i,j}}} \cos\left(\frac{\pi}{2}(H_i + H_j)\right) \right) \right. \\ \left. + i \left(\rho_{i,j} \sqrt{\frac{1 - C_{i,j}}{C_{i,j}}} \sin\left(\frac{\pi}{2}(H_i + H_j)\right) - \eta_{i,j} \cos\left(\frac{\pi}{2}(H_i + H_j)\right) \right) \right],$$

where $\lambda_{i,j} = \frac{\sigma_i}{2\sqrt{\pi}} \frac{\Gamma(H_i + H_j + 1)}{\sqrt{\Gamma(2H_j + 1) \sin(H_j \pi)}}$ and $C_{i,j}$ is given in (12), provided $H_1 + H_2 \neq 1$.

When $H_1 + H_2 = 1$, the same solution holds, replacing $\rho_{i,j}$ by $\tilde{\rho}_{i,j}$ and $\eta_{i,j} \cos\left(\frac{\pi}{2}(H_1 + H_2)\right)$ by $-\frac{\pi}{2} \tilde{\eta}_{i,j}$.

3.2. Moving average representation. In the next proposition, we give an alternative characterization of the mfBm from an integral representation in the time domain (or moving average representation).

Theorem 8 (Didier and Pipiras, [12]). *Let $(X(t))_{t \in \mathbb{R}}$ be a mfBm with parameter $(H_1, \dots, H_p) \in (0, 1)^p$. Assume that for all $i \in \{1, \dots, p\}$, $H_i \neq 1/2$. Then there exist M^+, M^- two $p \times p$ real matrices such that each component admits the following representation*

$$(16) \quad X_i(t) = \sum_{j=1}^p \int_{\mathbb{R}} M_{i,j}^+ ((t-x)_+^{H_i-0.5} - (-x)_+^{H_i-0.5}) + M_{i,j}^- ((t-x)_-^{H_i-0.5} - (-x)_-^{H_i-0.5}) W_j(dx),$$

with $W(dx) = (W_1(dx), \dots, W_p(dx))$ is a Gaussian white noise with zero mean, independent components and covariance $\mathbb{E}W_i(dx)W_j(dx) = \delta_{i,j}dx$.

Conversely, any p -multivariate process satisfying (16) is a mfBm process.

Proof. This representation is deduced from the general representation obtained in [12]. \square

Remark 6. When $H_i = 1/2$ for each $i \in \{1, \dots, p\}$, it is shown in [12] that each component of the mfBm admits the following representation :

$$X_i(t) = \sum_{j=1}^p \int_{\mathbb{R}} M_{i,j}^+(\text{sign}(t-x) - \text{sign}(x)) + M_{i,j}^-(\log|t-x| - \log|x|) W_j(dx).$$

Our conjecture is that this representation remains valid when $H_i = 1/2$ whatever the values of other parameters H_j , $j \neq i$.

Starting from the moving average representation (16), using results in [27], we can specify the coefficients $\rho_{i,j}$, $\eta_{i,j}$, $\tilde{\rho}_{i,j}$ and $\tilde{\eta}_{i,j}$ involved in the covariances (3) and (4) (see [20]). More precisely, let us denote

$$M^+(M^+)' = (\alpha_{i,j}^{++}), \quad M^-(M^-)' = (\alpha_{i,j}^{--}), \quad M^+(M^-)' = (\alpha_{i,j}^{+-})$$

where M' is the transpose matrix of M . The variance of each component is equal to

$$\sigma_i^2 = \frac{B(H_i + .5, H_i + .5)}{\sin(H_i\pi)} \{ \alpha_{i,i}^{++} + \alpha_{i,i}^{--} - 2 \sin(H_i\pi) \alpha_{i,i}^{+-} \},$$

where $B(\cdot, \cdot)$ denotes the Beta function.

Moreover, if $H_i + H_j \neq 1$ then

$$\begin{aligned} \sigma_i \sigma_j \rho_{i,j} &= \frac{B(H_i + .5, H_j + .5)}{\sin((H_i + H_j)\pi)} \times \\ &\quad \{ (\alpha_{i,j}^{++} + \alpha_{i,j}^{--})(\cos(H_i\pi) + \cos(H_j\pi)) - (\alpha_{i,j}^{+-} + \alpha_{i,j}^{-+}) \sin((H_i + H_j)\pi) \}, \\ \sigma_i \sigma_j \eta_{i,j} &= \frac{B(H_i + .5, H_j + .5)}{\sin((H_i + H_j)\pi)} \times \\ &\quad \{ (\alpha_{i,j}^{++} - \alpha_{i,j}^{--})(\cos(H_i\pi) - \cos(H_j\pi)) - (\alpha_{i,j}^{+-} - \alpha_{i,j}^{-+}) \sin((H_i + H_j)\pi) \}. \end{aligned}$$

If $H_i + H_j = 1$ then

$$\begin{aligned} \sigma_i \sigma_j \tilde{\rho}_{i,j} &= B(H_i + .5, H_j + .5) \left\{ \frac{\sin(H_i\pi) + \sin(H_j\pi)}{2} (\alpha_{i,j}^{++} + \alpha_{i,j}^{--}) - \alpha_{i,j}^{+-} - \alpha_{i,j}^{-+} \right\}, \\ \sigma_i \sigma_j \tilde{\eta}_{i,j} &= (H_j - H_i) (\alpha_{i,j}^{++} - \alpha_{i,j}^{--}). \end{aligned}$$

Conversely, given a covariance function as in Proposition 3, if $H_i \neq 1/2$ for all i , one may find matrices M^+ and M^- such that (16) holds, provided the matrix on the right hand side of (15) is positive semidefinite. Indeed, in this case, a matrix A which solves (15) may be found by the Cholesky decomposition, then M^+ and M^- are deduced from relation (3.20) in [12]:

$$M^\pm = \sqrt{\frac{\pi}{2}} (D_1^{-1}A_1 \pm D_2^{-1}A_2),$$

where $A = A_1 + \mathbf{i}A_2$ and

$$D_1 = \text{diag} \left(\sin(\pi H_1)\Gamma(H_1 + \frac{1}{2}), \dots, \sin(\pi H_p)\Gamma(H_p + \frac{1}{2}) \right),$$

$$D_2 = \text{diag} \left(\cos(\pi H_1)\Gamma(H_1 + \frac{1}{2}), \dots, \cos(\pi H_p)\Gamma(H_p + \frac{1}{2}) \right).$$

3.3. Two particular examples. Let us focus on two particular examples which are quite natural: the causal mfBm ($M^- = 0$) and the well-balanced mfBm ($M^- = M^+$). In the causal case, the integral representation is a direct generalization of the integral representation of Mandelbrot and Van Ness [22] to the multivariate case. The well-balanced case is studied by Stoev and Taqqu in one dimension [27]. With the notation of the two previous sections, we note that the causal case (resp. well-balanced case) leads to $A_1 = \tan(\pi H)A_2$ (resp. $A_2 = 0$), where $\tan(\pi H) := \text{diag}(\tan(\pi H_1), \dots, \tan(\pi H_p))$. In these two cases, the covariance only depends on one parameter, for instance $\rho_{i,j}$ (or $\tilde{\rho}_{i,j}$). Indeed we easily deduce $\eta_{i,j}$ (or $\tilde{\eta}_{i,j}$) as follows :

- in the causal case *i.e.* $M^- = 0$ or equivalently $A_1 = \tan(\pi H)A_2$:

$$\begin{aligned} \eta_{i,j} &= -\rho_{i,j} \tan\left(\frac{\pi}{2}(H_i + H_j)\right) \tan\left(\frac{\pi}{2}(H_i - H_j)\right) \quad \text{if } H_i + H_j \neq 1, \\ \tilde{\eta}_{i,j} &= \tilde{\rho}_{i,j} \frac{2}{\pi \tan(\pi H_i)} \quad \text{if } H_i + H_j = 1. \end{aligned}$$

- in the well-balanced case *i.e.* $M^- = M^+$ or equivalently $A_2 = 0$:

$$\begin{aligned} \eta_{i,j} &= 0 \quad \text{if } H_i + H_j \neq 1, \\ \tilde{\eta}_{i,j} &= 0 \quad \text{if } H_i + H_j = 1. \end{aligned}$$

Remark 7. From Proposition 6, the well-balanced mfBm is therefore time reversible.

3.4. Existence of the covariance of the mfBm. In this paragraph, we highlight some of the previous results in order to exhibit the sets of the possible parameters $(\rho_{i,j}, \eta_{i,j})$ or $(\tilde{\rho}_{i,j}, \tilde{\eta}_{i,j})$ ensuring the existence of the covariance of the mfBm.

For $i, j = 1, \dots, p$, let us give $(H_i, H_j) \in (0, 1)^2$, $(\sigma_i, \sigma_j) \in \mathbb{R}^+ \times \mathbb{R}^+$ and $(\rho_{i,j}, \eta_{i,j}) \in [-1, 1] \times \mathbb{R}$ with $\rho_{j,i} = \rho_{i,j}$ and $\eta_{j,i} = -\eta_{i,j}$ if $H_i + H_j \neq 1$, or $(\tilde{\rho}_{i,j}, \tilde{\eta}_{i,j}) \in [-1, 1] \times \mathbb{R}$ with $\tilde{\rho}_{j,i} = \tilde{\rho}_{i,j}$ and $\tilde{\eta}_{j,i} = -\tilde{\eta}_{i,j}$ if $H_i + H_j = 1$.

For this set of parameters, let us define the matrix $\Sigma(s, t) = (\Sigma_{i,j}(s, t))$ as follows : $\Sigma_{i,i}(s, t)$ is given by (2) and $\Sigma_{i,j}(s, t)$ is given by (3) when $H_i + H_j \neq 1$ and (4) when $H_i + H_j = 1$.

Proposition 9. *The matrix $\Sigma(s, t)$ is a covariance matrix function if and only if the Hermitian matrix $Q = (\Gamma(H_i + H_j + 1)\tau_{i,j}(1))$ with $\tau_{i,j}$ defined in (10), is positive semidefinite. When $p = 2$, this condition reduces to $C_{1,2} \leq 1$ where $C_{1,2}$ is the coherence defined by (12).*

Proof. First, note that since $\rho_{j,i} = \rho_{i,j}$ and $\eta_{j,i} = -\eta_{i,j}$, Q is a Hermitian matrix. Now, if Q is positive semidefinite, then so is the matrix $(2\pi)^{-1}(\sigma_i\sigma_j Q_{i,j})$. Therefore there exists a matrix A satisfying (15). From Theorem 7, there exists a mfBm having $\Sigma(s, t)$ as covariance matrix function. Conversely, if $\Sigma(s, t)$ is a covariance matrix function of a mfBm then the representation (13) holds and by (15), the matrix Q is positive semidefinite.

When $p = 2$, the result comes from the fact that Q is positive semidefinite if and only if $\det(Q) \geq 0$ or equivalently $C_{1,2} \leq 1$. \square

When $p = 2$, for fixed values of (H_1, H_2) the condition $C_{1,2} \leq 1$ means that the set of possible parameters $(\rho_{1,2}, \eta_{1,2})$ is the interior of an ellipse. These sets are represented in Figure 1 according to different values of H_1 and H_2 . Note that, in order to compare the cases $H_1 + H_2 \neq 1$ and $H_1 + H_2 = 1$, we have reparameterized $\eta_{1,2}$ by $\eta'_{1,2} := \eta_{1,2}(1 - H_1 - H_2)$. In such a way, the second ellipse becomes the limit of the first one as $H_1 + H_2 \rightarrow 1$ (see also Remark 3).

Let us underline that the maximum possible correlation between two fBm's is obtained when $\eta_{1,2} = 0$, i.e. when the 2-mfBm is time reversible according to Proposition 6.

Remark 8. *When $H_1 = \dots = H_p = H \neq 1/2$, the matrix Q rewrites $Q_{i,j} = \Gamma(2H + 1)(\sin(\pi H)\rho_{i,j} - i\eta_{i,j} \cos(\pi H))$ and*

- *if the mfBm is time reversible, i.e. $\eta_{i,j} = 0$ (for $i, j = 1, \dots, p$), then Q is a correlation matrix and is therefore positive-semidefinite for any $|\rho_{i,j}| \leq 1$,*
- *when $p = 2$, the set of possible values for $(\rho_{1,2}, \eta_{1,2})$ associated to H and $1 - H$ are the same.*

In the particular case of the causal or the well-balanced mfBm, the matrix $\Sigma(s, t)$ can be expressed through the sole parameter $\rho_{i,j}$. Let $\lambda(H_1, H_2)$ the function which equals to $\cos(\frac{\pi}{2}(H_1 - H_2))^2$ in the causal case and which equals 1 in the well-balanced case. The maximal possible correlation when $p = 2$ is given by

$$\rho_{1,2}^2 = \frac{\Gamma(2H_1 + 1)\Gamma(2H_2 + 1)}{\Gamma(H_1 + H_2 + 1)^2} \frac{\sin(\pi H_1) \sin(\pi H_2)}{\sin(\frac{\pi}{2}(H_1 + H_2))^2} \times \lambda(H_1, H_2).$$

Figure 2 represents $|\rho_{1,2}|$ with respect to (H_1, H_2) .

Figures 1 and 2 illustrate the main limitation of the mfBm model. Under self-similarity condition (1), it is not possible to construct arbitrary correlated fractional Brownian motions. For example, when $H_1 = 0.1$ and $H_2 = 0.8$, the correlation cannot exceed 0.514.

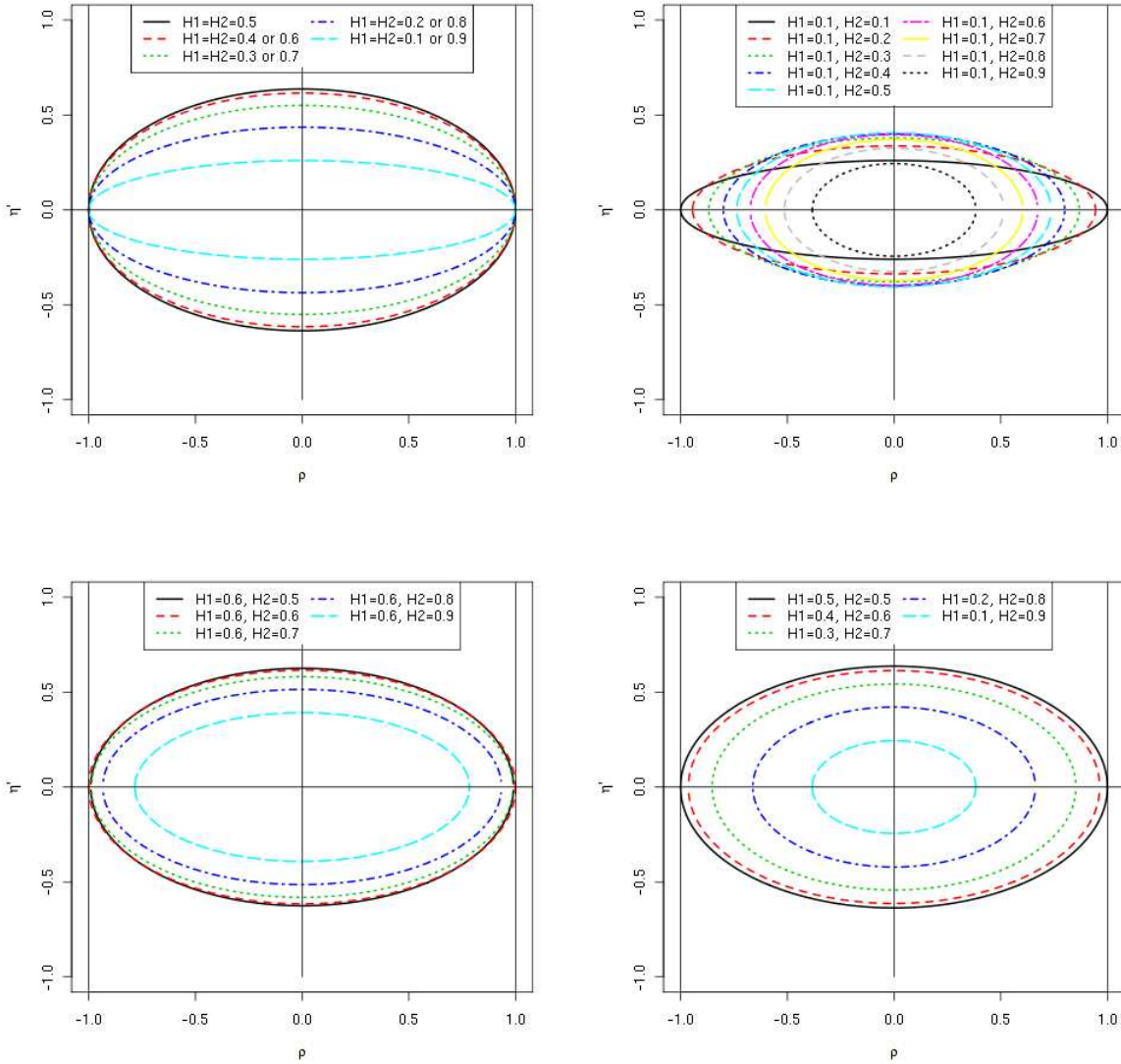


FIGURE 1. Various examples of possible values for $(\rho_{1,2}, \eta'_{1,2})$ with $\eta'_{1,2} := \eta_{1,2}(1 - H_1 - H_2)$ when $H_1 + H_2 \neq 1$ and $(\tilde{\rho}_{1,2}, \tilde{\eta}_{1,2})$ when $H_1 + H_2 = 1$, ensuring that $\Sigma(s, t)$ is a covariance matrix function in the particular case $p = 2$.

4. THE MFBM AS A LIMITING PROCESS.

A natural way to construct self-similar processes is through limits of stochastic processes. In dimension one, the result is due to Lamperti [18]. In [16], an extension to operator self-similar processes is given. A similar result for the mfBm is deduced and stated below. In

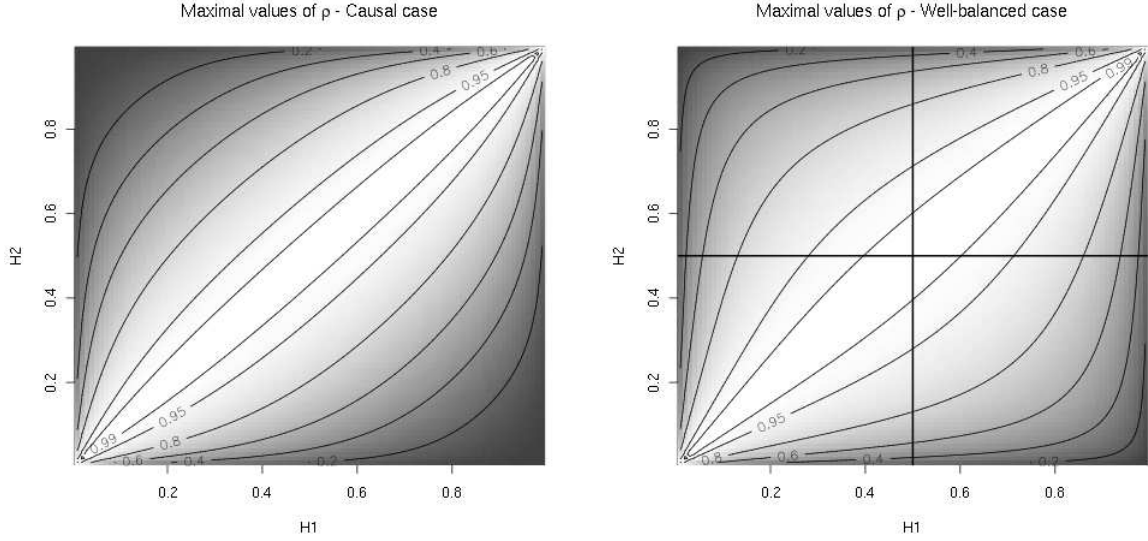


FIGURE 2. Maximal values of the absolute possible correlation parameter $|\rho_{1,2}|$ ensuring that $\Sigma(s, t)$ is a covariance matrix function in the case $p = 2$, in terms of H_1 and H_2 for the causal and well-balanced mfBm.

the following, a p -multivariate process $(X(t))_{t \in \mathbb{R}}$ is said proper if, for each t , the law of $X(t)$ is not contained in a proper subspace of \mathbb{R}^p .

Theorem 10. *Let $(X(t))_{t \in \mathbb{R}}$ be a p -multivariate proper process, continuous in probability. If there exist a p -multivariate process $(Y(t))_{t \in \mathbb{R}}$ and p real functions a_1, \dots, a_p such that*

$$(17) \quad (a_1(n)Y_1(nt), \dots, a_p(n)Y_p(nt)) \xrightarrow[\text{fidi}]{n \rightarrow \infty} X(t),$$

then the multivariate process $(X(t))$ is self-similar. Conversely, any multivariate self-similar process can be obtained as a such limit.

Proof. The proof is similar to Theorem 5 in [16]. Fix $k \in \mathbb{N}$ and $r > 0$. For each $T \in \mathbb{R}^k$ we denote $X(T) := (X(T_1), \dots, X(T_k))$. Let $\mathcal{D}_{r,k}$ be the set of all invertible diagonal matrices α such that, for all $T \in \mathbb{R}^k$, $X(rT) = \alpha X(T)$.

Let us first show that $\mathcal{D}_{r,k}$ is not empty. According to (17), we have

$$\text{diag}(a_1(n), \dots, a_p(n))Y(nrT) \xrightarrow[d]{n \rightarrow \infty} X(rT),$$

and

$$\text{diag}(a_1(rn), \dots, a_p(rn))Y(nrT) \xrightarrow[d]{n \rightarrow \infty} X(T).$$

Since $(X(t))$ is proper, $\text{diag}(a_1(n), \dots, a_p(n))$ and $\text{diag}(a_1(rn), \dots, a_p(rn))$ are invertible for n large enough. Then, Theorem 2.3 in [31] ensures that α_n defined by

$$\alpha_n = \text{diag}(a_1(n), \dots, a_p(n))\text{diag}(a_1(nr), \dots, a_p(nr))^{-1}$$

has a limit in $\mathcal{D}_{r,k}$. Moreover if α is a limit of α_n then $X(rT) = \alpha X(T)$ and thus $\mathcal{D}_{r,k} \neq \emptyset$.

It is then straightforward to adapt Lemma 7.2-7.5 in [16] for the subgroup $\mathcal{D}_{r,k}$, which yields that for each r , $\cap_k \mathcal{D}_{r,k}$ is not empty. Therefore, for any fixed $r > 0$, there exists $\alpha \in \cap_k \mathcal{D}_{r,k}$ such that $(X(rt))$ and $(\alpha X(T))$ have the same finite dimensional distributions. Theorem 1 in [16] ensures that there exists $(H_1, \dots, H_p) \in (0, 1)^p$ such that $\alpha = \text{diag}(r^{H_1}, \dots, r^{H_p})$. The converse is trivial. □

As an illustration of Theorem 10, the mfBm can be obtained as the weak limit of partial sums of sum of linear processes (also called superlinear processes, see [33]). Some examples may be found in [8] and [19]. In Proposition 11 below, we give a general convergence result which allows to reach almost any mfBm from such partial sums. The unique restriction concerns the particular case when at least one of the Hurst parameters is equal to $1/2$.

Let $(\epsilon_j(k))_{k \in \mathbb{Z}}$, $j = 1, \dots, p$ be p independent i.i.d. sequences with zero mean and unit variance. Let us consider the superlinear processes

$$(18) \quad Z_i(t) = \sum_{j=1}^p \sum_{k \in \mathbb{Z}} \psi_{i,j}(t-k) \epsilon_j(k), \quad i = 1, \dots, p,$$

where $\psi_{i,j}(k)$ are real coefficients with $\sum_{k \in \mathbb{Z}} \psi_{i,j}^2(k) < \infty$.

Moreover, we assume that $\psi_{i,j}(k) = \psi_{i,j}^+(k) + \psi_{i,j}^-(k)$ where $\psi_{i,j}^+(k)$ satisfies one of the following conditions:

- (i) $\psi_{i,j}^+(k) = (\alpha_{i,j}^+ + o(1)) k_+^{d_{i,j}^+ - 1}$ as $|k| \rightarrow \infty$, with $0 < d_{i,j}^+ < \frac{1}{2}$ and $\alpha_{i,j}^+ \neq 0$,
- (ii) $\psi_{i,j}^+(k) = (\alpha_{i,j}^+ + o(1)) k_+^{d_{i,j}^+ - 1}$ as $|k| \rightarrow \infty$, with $-\frac{1}{2} < d_{i,j}^+ < 0$, $\sum_{k \in \mathbb{Z}} \psi_{i,j}^+(k) = 0$ and $\alpha_{i,j}^+ \neq 0$,
- (iii) $\sum_{k \in \mathbb{Z}} |\psi_{i,j}^+(k)| < \infty$ and let $\alpha_{i,j}^+ := \sum_{k \in \mathbb{Z}} \psi_{i,j}^+(k) \neq 0$, $d_{i,j}^+ := 0$.

Similarly, $\psi_{i,j}^-(k)$ is assumed to satisfy (i), (ii) or (iii) where k_+ , $d_{i,j}^+$ and $\alpha_{i,j}^+$ are replaced by k_- , $d_{i,j}^-$ and $\alpha_{i,j}^-$.

Proposition 11. *Let $d_i = \max(d_{i1}^+, d_{i1}^-, \dots, d_{ip}^+, d_{ip}^-)$, for $i = 1, \dots, p$. Consider the vector of partial sums, for $\tau \in \mathbb{R}$,*

$$S_n(\tau) = \left(n^{-d_1 - (1/2)} \sum_{t=1}^{[n\tau]} Z_1(t), \dots, n^{-d_p - (1/2)} \sum_{t=1}^{[n\tau]} Z_p(t) \right).$$

Then the finite dimensional distributions of $(S_n(\tau))_{\tau \in \mathbb{R}}$ converge in law towards a p -mfBm $(X(\tau))_{\tau \in \mathbb{R}}$.

- *When $d_i \neq 0$, $(X_i(\tau))_{\tau \in \mathbb{R}}$ is defined through the integral representation (16) where $M_{i,j}^+ = \alpha_{i,j}^+ d_i^{-1} \mathbf{1}_{d_{i,j}^+ = d_i}$ and $M_{i,j}^- = \alpha_{i,j}^- d_i^{-1} \mathbf{1}_{d_{i,j}^- = d_i}$.*
- *When $d_i = 0$, $X_i(\tau) = \sum_{j=1}^p (\alpha_{i,j}^+ \mathbf{1}_{d_{i,j}^+ = 0} + \alpha_{i,j}^- \mathbf{1}_{d_{i,j}^- = 0}) W_j(\tau)$, where W_j is a standard Brownian motion.*

Moreover, if for all $j = 1, \dots, p$, $E(\epsilon_j(0)^{2\alpha}) < \infty$ with $\alpha > 1 \vee (1 + 2d_{max})^{-1}$ where $d_{max} = \max_i \{d_i\}$, then $S_n(\cdot)$ converges towards the p -mfBm $X(\cdot)$ in the Skorohod space $\mathcal{D}([0, 1])$.

Sketch of proof. We focus on the convergence in law of $S_n(\tau)$ to $X(\tau)$, for a fixed τ in \mathbb{R} , the finite dimensional convergence is deduced in the same way. We set for simplicity $\tau = 1$.

According to the Cramér-Wold device, for any vector $(\lambda_1, \dots, \lambda_p) \in \mathbb{R}^p$, we must show that $\lambda' S_n(1)$ converges in law to $\lambda' X(1)$. We may rewrite $\lambda' S_n(1)$ as a sum of discrete stochastic integrals (see [29] and [4]) :

$$\begin{aligned}
\lambda' S_n(1) &= \sum_{i=1}^p \lambda_i n^{-d_i - (1/2)} \sum_{t=1}^n Z_i(t) \\
&= \sum_{i=1}^p \lambda_i \sum_{j=1}^p \sum_{k \in \mathbb{Z}} n^{-d_i - (1/2)} \sum_{t=1}^n (\psi_{i,j}^+(t-k) + \psi_{i,j}^-(t-k)) \epsilon_j(k) \\
(19) \quad &= \sum_{i=1}^p \lambda_i \sum_{j=1}^p \int_{\mathbb{R}} (f_{i,j,n}^+(x) + f_{i,j,n}^-(x)) W_{j,n}(dx),
\end{aligned}$$

where the stochastic measures $W_{j,n}$, $j = 1, \dots, p$ are defined on finite intervals C by

$$W_{j,n}(C) = n^{-1/2} \sum_{k/n \in C} \epsilon_j(k),$$

and where $f_{i,j,n}^+$, $f_{i,j,n}^-$ are piecewise constant functions defined as follows: denoting $\lceil x \rceil$ the smallest integer not less than x , we have for all $x \in \mathbb{R}$,

$$f_{i,j,n}^+(x) = n^{-d_i} \sum_{t=1}^n \psi_{i,j}^+(t - \lceil nx \rceil),$$

respectively $f_{i,j,n}^-(x) = n^{-d_i} \sum_{t=1}^n \psi_{i,j}^-(t - \lceil xn \rceil)$.

The following lemma states the convergence of a linear combination of discrete stochastic integrals as in (19). A function is said n -simple if it takes a finite number a nonzero constant values on intervals $(k/n, (k+1)/n]$, $k \in \mathbb{Z}$.

Lemma 12. *Let $(f_{1,n}, \dots, f_{p,n})_{n \in \mathbb{N}}$ be a sequence of p n -simple functions in $L^2(\mathbb{R})$. If for any $j = 1, \dots, p$, there exists $f_j \in L^2(\mathbb{R})$ such that $\int_{\mathbb{R}} |f_{j,n}(x) - f_j(x)|^2 dx \rightarrow 0$, then $\sum_{j=1}^p \int_{\mathbb{R}} f_{j,n}(x) W_{j,n}(dx)$ converges in law to $\sum_{j=1}^p \int_{\mathbb{R}} f_j(x) W_j(dx)$, where the W_j 's are independent standard Gaussian random measures.*

When $p = 1$, this lemma is proved in [28]. The case $p = 2$ is considered in [4] and the extension to $p \geq 3$ is straightforward.

From Lemma 12 and (19), it remains to show that

$$\lim_{n \rightarrow \infty} \int_{\mathbb{R}} \left| f_{i,j,n}^{\pm}(x) - \frac{\alpha_{i,j}^{\pm}}{d_i} \left((1-x)_{\pm}^{d_i} - (-x)_{\pm}^{d_i} \right) \mathbf{1}_{d_{i,j}^{\pm} = d_i} \right|^2 dx = 0,$$

where we agree that $d_i^{-1}((1-x)_\pm^{d_i} - (-x)_\pm^{d_i}) = \mathbf{1}_{[0,1]}(x)$ when $d_i = 0$. Below, we only consider the pointwise convergence of $f_{i,j,n}^\pm(x)$, for $x \in \mathbb{R}$, when $d_{i,j}^\pm = d_i$. The convergence in L^2 is then deduced from the dominated convergence theorem (see [28], [29], [4] for details). It also follows easily that, when $d_{i,j}^\pm < d_i$, $\int_{\mathbb{R}} |f_{i,j,n}^\pm(x)|^2 dx \rightarrow 0$.

Under assumption (i), note that since $d_i > 0$, $(1-x)_\pm^{d_i} - (-x)_\pm^{d_i} = d_i \int_0^1 (t-x)_\pm^{d_i-1} dt$. We have, for any $x \in \mathbb{R}$,

$$\begin{aligned} f_{i,j,n}^\pm(x) &= n^{-d_i} \sum_{t=1}^n \psi_{i,j}^\pm(t - \lceil nx \rceil) \\ &= n^{-d_i} \int_0^n \psi_{i,j}^\pm(\lceil t \rceil - \lceil nx \rceil) dt \\ &= n^{-d_i} \int_0^n (\alpha_{i,j}^\pm + o(1)) (\lceil t \rceil - \lceil nx \rceil)_\pm^{d_i-1} dt \\ &= \int_0^1 (\alpha_{i,j}^\pm + o(1)) \left(\frac{\lceil nt \rceil - \lceil nx \rceil}{n} \right)_\pm^{d_i-1} dt \longrightarrow \alpha_{i,j}^\pm \int_0^1 (t-x)_\pm^{d_i-1} dt. \end{aligned}$$

Under assumption (ii), $d_i < 0$. When $x \leq 0$, $(1-x)_+^{d_i} - (-x)_+^{d_i} = d_i \int_0^1 (t-x)^{d_i-1} dt$ and the convergence of $f_{i,j,n}^+(x)$ can be proved as above. When $x \geq 1$, $(1-x)_+^{d_i} - (-x)_+^{d_i} = 0 = f_{i,j,n}^+(x)$. When $0 \leq x \leq 1$, $(1-x)_+^{d_i} - (-x)_+^{d_i} = -d_i \int_1^{+\infty} (t-x)^{d_i-1} dt$ and, since $\sum_{k \in \mathbb{Z}} \psi_{i,j}^+(k) = 0$, we have

$$f_{i,j,n}^+(x) = n^{-d_i} \sum_{t=\lceil nx \rceil}^n \psi_{i,j}^+(t - \lceil nx \rceil) = n^{-d_i} \sum_{t=0}^{n-\lceil nx \rceil} \psi_{i,j}^+(t) = -n^{-d_i} \sum_{t>n-\lceil nx \rceil} \psi_{i,j}^+(t).$$

Therefore,

$$\begin{aligned} f_{i,j,n}^+(x) &= -n^{-d_i} \int_{n-\lceil nx \rceil}^{+\infty} (\alpha_{i,j}^+ + o(1)) (\lceil t \rceil)^{d_i-1} dt \\ &= - \int_{1-\frac{\lceil nx \rceil}{n}}^{+\infty} (\alpha_{i,j}^+ + o(1)) \left(\frac{\lceil nt \rceil}{n} \right)^{d_i-1} dt \\ &\longrightarrow -\alpha_{i,j}^+ \int_{1-x}^{+\infty} t^{d_i-1} dt = -\alpha_{i,j}^+ \int_1^{+\infty} (t-x)^{d_i-1} dt \end{aligned}$$

This proves $f_{i,j,n}^+(x) \rightarrow d_i^{-1} \alpha_{i,j}^+ ((1-x)_+^{d_i} - (-x)_+^{d_i})$, for any $x \in \mathbb{R}$, under assumption (ii). The same scheme may be used to prove that $f_{i,j,n}^-(x) \rightarrow d_i^{-1} \alpha_{i,j}^- ((1-x)_-^{d_i} - (-x)_-^{d_i})$ under assumption (ii), noting that

$$(1-x)_-^{d_i} - (-x)_-^{d_i} = \begin{cases} 0 & \text{when } x \leq 0, \\ -d_i \int_{-\infty}^0 (t-x)^{d_i-1} dt & \text{when } 0 \leq x \leq 1, \\ d_i \int_0^1 (t-x)^{d_i-1} dt & \text{when } x > 1. \end{cases}$$

Under assumption (iii),

$$f_{i,j,n}^{\pm}(x) = \sum_{t=1}^n \psi_{i,j}^{\pm}(t - \lceil nx \rceil) = \sum_{t=1-\lceil nx \rceil}^{n-\lceil nx \rceil} \psi_{i,j}^{\pm}(t).$$

Since $\sum_{t \in \mathbb{Z}} \psi_{i,j}^{\pm}(t) < \infty$, $f_{i,j,n}^{\pm}(x) \rightarrow 0$ for all $x \notin [0, 1]$. When $x \in [0, 1]$, we have $f_{i,j,n}^{\pm}(x) \rightarrow \alpha_{i,j}^{\pm}$.

Therefore, the first claim of the theorem is proved, i.e. the convergence in law of the finite dimensional distribution of $(S_n(\tau))_{\tau \in \mathbb{R}}$ to $(X(\tau))_{\tau \in \mathbb{R}}$. To extend this convergence to a functional convergence in $\mathcal{D}([0, 1])$, it remains to show tightness of the sequence $(S_n(\tau))_{\tau \in [0, 1]}$. This follows exactly from the same arguments as in the proof of Theorem 1.2 in [4]. \square

5. SYNTHESIS OF THE MFBM

5.1. Introduction. The exact simulation of the fractional Brownian motion has been a question of great interest in the nineties. This may be done by generating a sample path of a fractional Gaussian noise. An important step towards efficient simulation was obtained after the work of Wood and Chan [32] about the simulation of arbitrary stationary Gaussian sequences with prescribed covariance function. The technique relies upon the embedding of the covariance matrix into a circulant matrix, a square root of which is easily calculated using the discrete Fourier transform. This leads to a very efficient algorithm, both in terms of computation time and storage needs. Wood and Chan method is an exact simulation method provided that the circulant matrix is semidefinite positive, a property that is not always satisfied. However, for the fractional Gaussian noise, it can be proved that the circulant matrix is definite positive for all $H \in (0, 1)$, see [9, 13].

In [7], Wood and Chan extended their method and provided a more general algorithm adapted to multivariate stationary Gaussian processes. The main characteristic of this method is that if a certain condition for a family of Hermitian matrices holds then the algorithm is exact in principle, i.e. the simulated data have the true covariance. We present hereafter the main ideas, briefly describe the algorithm and propose some examples.

Remark 9. *Other approaches could have been undertaken (see [3] for a review in the case $p = 1$). Approximate simulations can be done by discretizing the moving-average or spectral stochastic integrals (13) or (16). [6] also proposed an approximate method based on the spectral density matrix of the increments for synthesizing multivariate Gaussian time series. Thanks to Proposition 5, this could also be envisaged for the mfBm.*

5.2. Method and algorithm. For two arbitrary matrices $A = (A_{j,k})$ and B , we use $A \otimes B$ to denote the Kronecker product of A and B that is the block matrix $(A_{j,k}B)$.

Let $\Delta X := \Delta_1 X$ denotes the increments of size 1 ($\delta = 1$) of a mfBm. We have $\Delta X = (\Delta X(t))_{t \in \mathbb{R}} = ((\Delta X_1(t), \dots, \Delta X_p(t)))'_{t \in \mathbb{R}}$. The aim is to simulate a realization of a multivariate fractional Gaussian noise discretized at times $j = 1, \dots, n$, that is a realization of $(\Delta X(1), \dots, \Delta X(n))$. Then a realization of the discretized mfBm will be easily obtained.

We denote by $\Delta X^{(n)}$ the merged vector $\Delta X^{(n)} = (\Delta X(1)', \dots, \Delta X(n)')'$ and by \mathbb{G} its covariance matrix. \mathbb{G} is the $np \times np$ Toeplitz block matrix $\mathbb{G} = (G(|i-j|))_{i,j=1,\dots,n}$ where for $h = 0, \dots, n-1$, $G(h)$ is the $p \times p$ matrix given by $G(h) := (\gamma_{j,k}(h))_{j,k=1,\dots,p}$. The simulation problem can be viewed as the generation of a random vector following a $\mathcal{N}_{np}(0, \mathbb{G})$. This may be done by computing $\mathbb{G}^{1/2}$ but the complexity of such a procedure is $\mathcal{O}(p^3 n^2)$ for block Toeplitz matrices. To overcome this numerical cost, the idea is to embed \mathbb{G} into the block circulant matrix $C = \text{circ}\{C(j), j = 0, \dots, m-1\}$, where m is a power of 2 greater than $2(n-1)$ and where each $C(j)$ is the $p \times p$ matrix defined by

$$(20) \quad C(j) = \begin{cases} G(j) & \text{if } 0 \leq j < m/2 \\ \frac{1}{2}(G(j) + G(j)') & \text{if } j = m/2 \\ G(j-m) & \text{if } m/2 < j \leq m-1. \end{cases}$$

Such a definition ensures that C is a symmetric matrix with nested block circulant structure and that $\mathbb{G} = \{C(j), j = 0, \dots, n-1\}$ is a submatrix of C . Therefore, the simulation of a $\mathcal{N}_{np}(0, \mathbb{G})$ may be achieved by taking the n “first” components of a vector $\mathcal{N}_{mp}(0, C)$, which is done by computing $C^{1/2}$. The last problem is more simple since one may exploit the circulant characteristic of C : there exist m Hermitian matrices $B(j)$ of size $p \times p$ such that the following decomposition holds

$$(21) \quad C = (J \otimes I_p) \text{diag}(B(j), j = 0, \dots, m-1) (J^* \otimes I_p),$$

where Q is the $m \times m$ unitary matrix defined for $j, k = 0, m-1$ by $J_{j,k} = e^{-2i\pi jk/m}$. The computation of $C^{1/2}$ is much less expensive than the computation of $\mathbb{G}^{1/2}$ since, as in the one-dimensional case ($p = 1$), (21) will allow us to make use of the Fast Fourier Transform (FFT) which considerably reduces the complexity.

Now, the algorithm proposed by Wood and Chan may be described through the following steps. Let m be a power of 2 greater than $2(n-1)$.

Step 1. For $1 \leq u \leq v \leq p$ calculate for $k = 0, \dots, m-1$

$$B_{u,v}(k) = \sum_{j=0}^{m-1} C_{u,v}(j) e^{-2i\pi jk/m}$$

where $C_{u,v}(j)$ is the element (u, v) of the matrix $C(j)$ defined by (20) and set $B_{v,u}(k) = B_{u,v}(k)^*$.

Step 2. For each $j = 0, \dots, m-1$ determine a unitary matrix $R(j)$ and real numbers $\xi_u(j)$ ($u = 1, \dots, p$) such that $B(j) = R(j) \text{diag}(\xi_1(j), \dots, \xi_p(j)) R(j)^*$.

Step 3. Assume that the eigenvalues $\xi_1(j), \dots, \xi_p(j)$ are non-negative (see Remark 11) and define $\tilde{B}(j) = R(j) \text{diag}(\sqrt{\xi_1(j)}, \dots, \sqrt{\xi_p(j)}) R(j)^*$.

Step 4. For $j = 0, \dots, m/2$ generate independent vectors $U(j), V(j) \sim \mathcal{N}_p(0, I)$ and define

$$Z(j) = \frac{1}{\sqrt{2m}} \times \begin{cases} \sqrt{2}U(j) & \text{for } j = 0, \frac{m}{2} \\ U(j) + \mathbf{i}V(j) & \text{for } j = 1, \dots, \frac{m}{2} - 1, \end{cases}$$

let $Z(m-j) = \overline{Z}(j)$ for $j = \frac{m}{2} + 1, \dots, m-1$ and set $W(j) := \tilde{B}(j)Z(j)$.

Step 5. For $u = 1, \dots, p$ calculate for $k = 0, \dots, m-1$

$$\Delta X_u(k) = \sum_{j=0}^{m-1} W_u(j) e^{-2i\pi jk/m}$$

and return $\{\Delta X_u(k), 1 \leq u \leq p, k = 0, \dots, n-1\}$.

Step 6. For $u = 1, \dots, p$ take the cumulative sums ΔX_u to get the u -th component X_u of a sample path of a mfBm.

Figure 3 gives some examples of sample paths of mfBm's simulated with this algorithm.

Remark 10. *Let us discuss the computation cost of the most expensive steps, that is steps 1, 2 and 5. Step 1 requires $\frac{p(p+1)}{2}$ applications of the FFT of signals of length m , Step 2 needs m diagonalisations of $p \times p$ Hermitian matrices and Step 5 requires p applications of the FFT of signals of length m . Therefore, the total cost, $\kappa(m, p)$ equals*

$$\kappa(m, p) = \mathcal{O}\left(\frac{p(p+1)}{2} m \log m\right) + \mathcal{O}(mp^3) + \mathcal{O}(pm \log m).$$

Remark 11. *The crucial point of the previous algorithm lies in the non-negativity of the eigenvalues $\xi_1(j), \dots, \xi_p(j)$ for any $j = 0, \dots, m-1$. In the one-dimensional case (when $p = 1$) Steps 2 and 3 disappear, and in Step 1, $B_{11}(k)$ corresponds to the k -th eigenvalue of the circulant matrix C_{11} with first line defined by $C_{11}(j) = \gamma_{11}(j)$ for $0 \leq j \leq m/2$ and $\gamma(m-j)$ for $j = m/2 + 1, \dots, m-1$. For the fractional Gaussian noise, it has been proved by Craigmile [9] for $H < 1/2$, and by Dietrich and Newsam [13] for $H > 1/2$ that such a matrix is semidefinite-positive for any m (and so for the first power of 2 greater than $2(n-1)$). In the more general case $p > 1$, the problem is much more complex: the quantities $B_{u,v}(k)$ are not necessarily real, and the establishment of a condition of positivity for the matrix $B_{u,v}(k)$ does not seem obvious. When the condition in Step 3 does not hold, Wood and Chan suggest to either increase the value of m and restart Steps 1,2 or to truncate the negative eigenvalues to zero which leads to an approximate procedure. These problems are not addressed in this paper. Let us assert that for the simulation examples presented in Figure 3, we have observed that this condition is satisfied for m equal to the first power of 2.*

REFERENCES

- [1] Achard, S., Bassett, D. S., Meyer-Lindenberg, A. and Bullmore, E. (2008) Fractal connectivity of long-memory networks. *Physical Review E*, 77:036104.

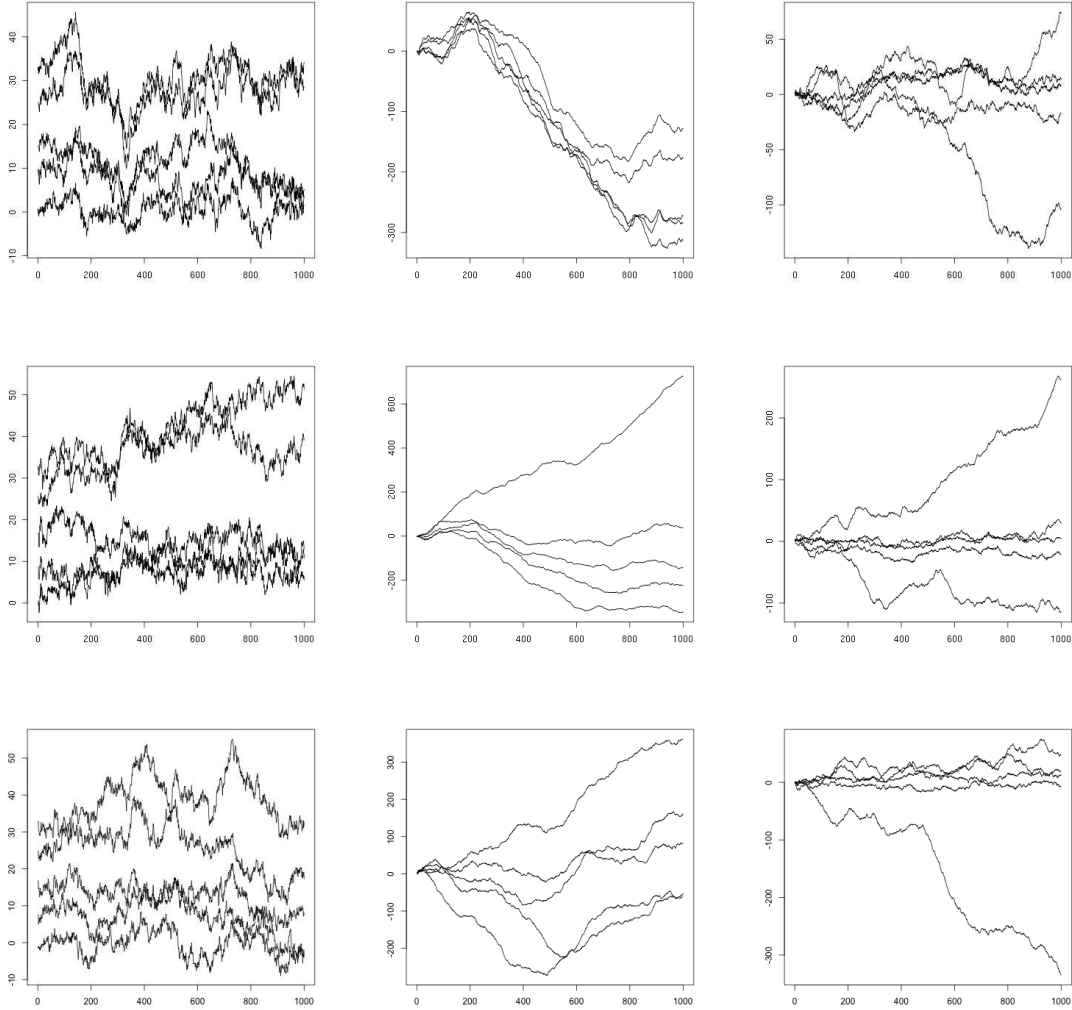


FIGURE 3. Examples of sample paths of length $n = 1000$ normalized causal (top), well-balanced (middle) and general (bottom) multivariate fractional Brownian motion with $p = 5$ components. The Hurst parameters are equally spaced in $[0.3, 0.4]$ (left), $[0.8, 0.9]$ (middle) and $[0.4, 0.8]$ (right). The correlation parameters $\rho_{i,j}$ are all set to 0.4 (left, middle) and 0.3 (right). For the general mfBm (bottom), the parameters $\eta_{i,j}$ are set to $0.1/(1 - H_i - H_j)$ and the parameters $\tilde{\eta}_{i,j}$ to 0.1. Note that the existence condition discussed in Proposition 9 and the condition in Step 3 of the algorithm are satisfied for these different choices of parameters. For convenience, the sample paths of the left column have been artificially shifted for visibility.

- [2] Arianos, S. and Carbone, A. (2009) Cross-correlation of long-range correlated series. *Journal of Statistical Mechanics : Theory and Experiment*, page P03037.
- [3] Bardet, J.-M., Lang, G., Oppenheim, G., Philippe, A. and Taqqu, M. (2003) Generators of long-range dependent processes : A survey. In: Doukhan, P., Oppenheim, G., Taqqu, M.S. (Eds.), *Theory and Applications of Long-Range Dependence: Theory and Applications*, pp. 557–578. Birkhäuser, Boston.
- [4] Bružaitė, K. and Vaičiulis, M., (2005) Asymptotic independence of distant partial sums of linear process. *Lithuanian Mathematical Journal* **45**, 387–404.
- [5] Coeurjolly, J.-F., Amblard, P.O., Achard, S., (2012) Wavelet analysis of the multivariate fractional Brownian motion, *submitted arXiv:1007.2109*.
- [6] Chambers, J. (1995) The simulation of random vector time series with given spectrum. *Mathematical and Computer Modelling*, **22**, 1–6.
- [7] Chan, G. and Wood, A. (1999) Simulation of stationary gaussian vector fields. *Statistics and Computing*, **9**(4), 265–268.
- [8] Chung, C.-F. (2002) Sample means, sample autocovariances, and linear regression of stationary multivariate long memory processes. *Econometric Theory* **18**, 51–78.
- [9] Craigmille P. (2003) Simulating a class of stationary gaussian processes using the davies-harte algorithm, with application to long memory processes. *Journal of Time Series Analysis*, **24**,505–510.
- [10] Davidson, J. and de Jong, R.M. (2000) The functional central limit theorem and weak convergence to stochastic integrals. *Econometric Theory* **16**, 643–666.
- [11] Davidson, J. and Hashimadze, N. (2008) Alternative frequency and time domain versions of fractional Brownian motion. *Econometric Theory* **24**, 256–293.
- [12] Didier, G. and Pipiras, V. (2011) Integral representations of operator fractional Brownian motion. *Bernoulli* **17**(11) 1–33.
- [13] Dietrich, C. R. and Newsam, G. N. (1997) Fast and exact simulation of stationary gaussian processes through circulant embedding of the covariance matrix. *SIAM Journal on Scientific and Statistical Computing*, **18**, 1088 - 1107.
- [14] Fleming B.J.W., Yu D., Harrison R.G. and Jubb D. (2001) Wavelet-based detection of coherent structures and self-affinity in financial data. *The European Physical Journal B*, **20**(4), 543-546.
- [15] Gil-Alana L.A. (2003) A fractional multivariate long memory model for the US and the Canadian real output. *Economics Letters*, **81**(3), 355-359.
- [16] Hudson, W. and Mason, J. (1982) Operator-self-similar processes in a finite-dimensional space. *Transactions of the American Mathematical Society* **273**, 281–297.
- [17] Laha, R.G. and Rohatgi, V.K. (1981) Operator self-similar stochastic processes in R^d . *Stochastic Processes and their Applications* **12**, 73–84.
- [18] Lamperti J. (1962) Semi-Stable Stochastic Processes. *Transactions of the American Mathematical Society*, **104**(1), pp. 62-78
- [19] Lavancier, F., Philippe, A. and Surgailis, D. (2010) A two-sample test for comparison of long memory parameters. *Journal of Multivariate Analysis*. **101** (9), pp 2118-2136.
- [20] Lavancier, F., Philippe, A. and Surgailis, D. (2009) Covariance function of vector self-similar process. *Statistics and Probability Letters*. **79**, 2415-2421.
- [21] Maejima, M. and Mason, J. (1994) Operator-self-similar stable processes. *Stochastic Processes and their Applications* **54**, 139–163.
- [22] Mandelbrot, B. and Van Ness, J. (1968) Fractional Brownian motions, fractional noises and applications. *SIAM Review*, **10**(4), 422–437
- [23] Marinucci, D. and Robinson, P.M. (2000) Weak convergence of multivariate fractional processes. *Stochastic Processes and their Applications* **86**, 103–120.
- [24] Robinson, P.M. (2008) Multiple local Whittle estimation in stationary systems. *Annals of Statistics*. **36**, 2508–2530.
- [25] Samorodnitsky, G. and Taqqu, M.S. (1994) *Stable Non-Gaussian Random Processes*. Chapman and Hall, New York.

- [26] Sato, K. (1991) Self-similar processes with independent increments. *Probability Theory and Related Fields* **89**, 285–300.
- [27] Stoev, S. and Taqqu, M.S. (2006) How rich is the class of multifractional Brownian motions? *Stochastic Processes and their Applications*. **11**, 200–221.
- [28] Surgailis, D. (1982). Zones of attraction of self-similar multiple integrals. *Lithuanian Mathematical Journal*. **22**, 185–201.
- [29] Surgailis, D. (2003) Non CLTs: U-statistics, multinomial formula and approximations of multiple Itô-Wiener integrals. In: Doukhan, P., Oppenheim, G., Taqqu, M.S. (Eds.), *Theory and Applications of Long-Range Dependence: Theory and Applications*, pp. 129–142. Birkhäuser, Boston.
- [30] Taqqu, M. (2003) Fractional Brownian motion and long-range dependence In: Doukhan, P., Oppenheim, G., Taqqu, M.S. (Eds.), *Theory and Applications of Long-Range Dependence: Theory and Applications*, pp. 5–38. Birkhäuser, Boston.
- [31] Weissman, I. (1976) On convergence of types and processes in Euclidean space. *Probability Theory and Related Fields* **37**(1), 35–41.
- [32] Wood, A. and Chan, G. (1994) Simulation of stationary gaussian processes in $[0, 1]^d$. *Journal of computational and graphical statistics*, **3**, 409–432.
- [33] Zhao, O. and Woodroffe, M. (2008) On martingale approximations. *Annals of Applied Probability*. **18**, 1831–1847.

DEPT. MATH & STAT., THE UNIVERSITY OF MELBOURNE, PARKVILLE, VIC 3010, AUSTRALIA,
 AND, GIPSA-LAB/CNRS UMR 5216/ BP 46, 38402 SAINT MARTIN D'HÈRES CEDEX, FRANCE
E-mail address: pierre-olivier.amblard@gipsa-lab.grenoble-inp.fr
URL: <http://www.gipsa-lab.grenoble-inp.fr/~bidou.amblard/>

LABORATOIRE JEAN KUNTZMANN, UMR 5224, BSHM, 1251 Av. CENTRALE BP 47,, 38040
 GRENOBLE CEDEX 9 FRANCE, AND, GIPSA-LAB/CNRS UMR 5216/ BP 46, 38402 SAINT MARTIN
 D'HÈRES CEDEX, FRANCE
E-mail address: jean-francois.coeurjolly@upmf-grenoble.fr
URL: <http://www-ljk.imag.fr/membres/Jean-Francois.Coeurjolly/>

UNIVERSITÉ DE NANTES, LABORATOIRE DE MATHÉMATIQUES JEAN LERAY, 2, RUE DE LA HOUSSINIÈRE
 44322 NANTES, FRANCE
E-mail address: frederic.lavancier@univ-nantes.fr
URL: <http://www.math.sciences.univ-nantes.fr/~lavancie>

UNIVERSITÉ DE NANTES, LABORATOIRE DE MATHÉMATIQUES JEAN LERAY, 2, RUE DE LA HOUSSINIÈRE
 44322 NANTES, FRANCE
E-mail address: anne.philippe@univ-nantes.fr
URL: <http://www.math.sciences.univ-nantes.fr/~philippe>