



Origin of the hot gas in low-mass protostars: Herschel-PACS spectroscopy of HH 46

T. A. van Kempen, L. E. Kristensen, G. J. Herczeg, R. Visser, E. F. van Dishoeck, S. F. Wampfler, S. Bruderer, A. O. Benz, S. D. Doty, C. Brinch, et al.

► To cite this version:

T. A. van Kempen, L. E. Kristensen, G. J. Herczeg, R. Visser, E. F. van Dishoeck, et al.. Origin of the hot gas in low-mass protostars: Herschel-PACS spectroscopy of HH 46. *Astronomy and Astrophysics* - A&A, 2010, 518, pp.L121. 10.1051/0004-6361/201014615 . hal-00495835

HAL Id: hal-00495835

<https://hal.science/hal-00495835>

Submitted on 6 Jan 2023

HAL is a multi-disciplinary open access archive for the deposit and dissemination of scientific research documents, whether they are published or not. The documents may come from teaching and research institutions in France or abroad, or from public or private research centers.

L'archive ouverte pluridisciplinaire **HAL**, est destinée au dépôt et à la diffusion de documents scientifiques de niveau recherche, publiés ou non, émanant des établissements d'enseignement et de recherche français ou étrangers, des laboratoires publics ou privés.

LETTER TO THE EDITOR

Origin of the hot gas in low-mass protostars^{★,★★}

Herschel-PACS spectroscopy of HH 46

T. A. van Kempen^{1,2}, L. E. Kristensen¹, G. J. Herczeg³, R. Visser¹, E. F. van Dishoeck^{1,3}, S. F. Wampfler⁴, S. Bruderer⁴, A. O. Benz⁴, S. D. Doty⁵, C. Brinch¹, M. R. Hogerheijde¹, J. K. Jørgensen⁶, M. Tafalla⁷, D. Neufeld⁸, R. Bachiller⁷, A. Baudry⁹, M. Benedettini¹⁰, E. A. Bergin¹¹, P. Bjerkeli¹², G. A. Blake¹³, S. Bontemps⁹, J. Braine⁹, P. Caselli^{14,15}, J. Cernicharo¹⁶, C. Codella¹⁵, F. Daniel¹⁶, A. M. di Giorgio¹⁰, C. Dominik^{17,18}, P. Encrenaz¹⁹, M. Fich²⁰, A. Fuente²¹, T. Giannini²², J. R. Goicoechea¹⁶, Th. de Graauw²³, F. Helmich²³, F. Herpin⁹, T. Jacq⁹, D. Johnstone^{24,25}, M. J. Kaufman²⁶, B. Larsson²⁷, D. Lis²⁸, R. Liseau¹², M. Marseille²³, C. M^cCoe²⁰, G. Melnick², B. Nisini²², M. Olberg¹², B. Parise²⁹, J. C. Pearson³⁰, R. Plume³¹, C. Risacher²³, J. Santiago-García³², P. Saraceno¹⁰, R. Shipman²³, F. van der Tak^{23,33}, F. Wyrowski²⁹, U. A. Yıldız¹, M. Ciechanowicz²⁹, L. Dubbeldam²³, S. Glenz³⁴, R. Huisman²³, R. H. Lin²⁹, P. Morris³⁵, J. A. Murphy³⁶, and N. Trappe³⁶

(Affiliations are available in the online edition)

Received 31 March 2010 / Accepted 10 May 2010

ABSTRACT

Aims. “Water In Star-forming regions with *Herschel*” (WISH) is a *Herschel* key programme aimed at understanding the physical and chemical structure of young stellar objects (YSOs) with a focus on water and related species.

Methods. The low-mass protostar HH 46 was observed with the Photodetector Array Camera and Spectrometer (PACS) on the *Herschel* Space Observatory to measure emission in H₂O, CO, OH, [O I], and [C II] lines located between 63 and 186 μ m. The excitation and spatial distribution of emission can disentangle the different heating mechanisms of YSOs, with better spatial resolution and sensitivity than previously possible.

Results. Far-IR line emission is detected at the position of the protostar and along the outflow axis. The OH emission is concentrated at the central position, CO emission is bright at the central position and along the outflow, and H₂O emission is concentrated in the outflow. In addition, [O I] emission is seen in low-velocity gas, assumed to be related to the envelope, and is also seen shifted up to 170 km s^{−1} in both the red- and blue-shifted jets. Envelope models are constructed based on previous observational constraints. They indicate that passive heating of a spherical envelope by the protostellar luminosity cannot explain the high-excitation molecular gas detected with PACS, including CO lines with upper levels at >2500 K above the ground state. Instead, warm CO and H₂O emission is probably produced in the walls of an outflow-carved cavity in the envelope, which are heated by UV photons and non-dissociative C-type shocks. The bright OH and [O I] emission is attributed to J-type shocks in dense gas close to the protostar. In the scenario described here, the combined cooling by far-IR lines within the central spatial pixel is estimated to be $2 \times 10^{-2} L_{\odot}$, with 60–80% attributed to J- and C-type shocks produced by interactions between the jet and the envelope.

Key words. astrochemistry – stars: formation – ISM: molecules – ISM: jets and outflows – ISM: individual objects: HH 46

1. Introduction

The embedded phase of star formation is a critical period in the evolution of a young star, because it is the stage where the final mass of the star, the size and mass of the protoplanetary disk, and the initial chemical composition of the disk are determined (André et al. 2000; Visser et al. 2009; Jørgensen et al. 2009). Many physical processes occur simultaneously in the immediate surroundings of the protostar: infall in the collapsing envelope, outflows sweeping up and shocking the material, and energetic (UV and X-ray) photons heating and dissociating the gas (Spaans et al. 1995; Bachiller & Tafalla 1999; Arce et al. 2007). Because of high extinction, these processes can only be probed at far-infrared and millimetre wavelengths, but lack of

observational facilities has hampered their quantification. The goal of the “Water In Star-forming regions with *Herschel*” (WISH) key programme is to use H₂O, CO and related species to determine the physical and chemical characteristics of young stellar objects (YSOs) as functions of evolutionary stage and across a wide range of luminosities and masses (see also Nisini et al. 2010; Fich et al. 2010).

One of the many surprises of ISO was the detection of highly excited CO and H₂O lines towards low-mass YSOs with the long-wavelength spectrometer (LWS, e.g., Giannini et al. 1999; Ceccarelli et al. 1999; Nisini et al. 2002). The origin of this hot gas (~500–2000 K) has been heavily debated, with two main explanations put forward: (i) shocks extending over a large area (arcmin scale); and (ii) the envelope heated by the protostellar luminosity on scales of 2–20″. The ISO-LWS data and subsequent modelling could not distinguish between these scenarios given the large beam of ~80″. The smaller aperture of *Herschel*-PACS allows imaging of these lines at 9″.4, sufficient to separate

[★] *Herschel* is an ESA space observatory with science instruments provided by European-led Principal Investigator consortia and with important participation from NASA.

^{★★} Table 2 is only available in electronic form at <http://www.aanda.org>

the on- and off-source emission. Moreover, its higher sensitivity and higher spectral resolution allow detection of weaker lines.

This letter presents science demonstration phase observations of HH 46, an isolated low-mass protostar ($L_{\text{bol}} \approx 16 L_{\odot}$, $D \approx 450$ pc) located in a dense core with a prominent outflow extending out to $\sim 2'$. It has been imaged with the *Spitzer* Space Telescope (Velusamy et al. 2007) and ground-based sub-millimetre telescopes (van Kempen et al. 2009, and references therein). Because of its well-defined geometry, HH 46 provides an ideal testbed for separating the different physical components contributing to the observed emission and for benchmarking new models of YSOs that can be used for other sources.

2. Observations and results

HH 46 was observed on 26 October 2009 with *Herschel* (Pilbratt et al. 2010) using PACS (Poglitsch et al. 2010) in pointed line-scan spectroscopy mode (obsid 1342186315 and 1342186316). PACS is a 5×5 array of $9''.4 \times 9''.4$ spatial pixels (spaxels) that cover the 53–210 μm wavelength range with a spectral resolution ranging from 1000 to 4000 (the latter only at $\sim 63 \mu\text{m}$) in spectroscopy mode. In one exposure, a wavelength segment is observed in the first order (105–210 μm) and at the same time in the second (72–105 μm) or third order (53–72 μm). The PACS spectrum of HH 46 covers 27 segments obtained in 15 separate integrations of 350 s each. Two different nod positions, located $6'$ in opposite directions from the target, were used to correct for telescopic background.

Data were reduced with HIPE v2.4.0. The relative spectral response function within each band was determined from ground calibration prior to launch. The absolute wavelength scale is accurate to 30–50 km s^{-1} , depending on the position of the emission peak in the cross-dispersion axis within the slit. The absolute flux calibration below and above 100 μm was separately determined from in-flight observations of (point) calibration sources. The uncertainty in absolute and relative fluxes is estimated to be 50%, based on a comparison with the ISO-LWS continuum data from Nisini et al. (2002).

Emission is detected in lines of H_2O , CO, OH, O I, and C II (Table 1, Fig. 1). Nisini et al. (2002) detected only the [O I] 63 and 145 μm and [C II] 158 μm lines with ISO. The typical 3σ sensitivity is $\sim 10^{-17} \text{ W m}^{-2}$ to an unresolved emission line and unlike the [O I] line, the molecular lines are all unresolved. The PACS emission in most lines and in the continuum is strongly peaked at the central position. Emission in many lines is also seen along the red and blue outflow lobes including bright emission in the spaxel centred $11''$ SW of the source. Tables 1 and 2 (the latter available online) list the line fluxes at the source position, in the red and blue outflows, and in the total field-of-view. The fluxes in the central spaxel were corrected for the point-source PSF. Fluxes for the outflows were measured over the spaxels indicated in Fig. 1 and corrected for the leaking of light from the central spaxel into adjacent spaxels.

Nine lines of water are detected in the central spaxel with E_u/k_B ranging from 114 to 320 K. Most H_2O emission lines peak at the location of strong outflow emission $11''$ SW (Table 2). Emission in CO lines ranging from $J_u = 14$ to 30 ($E_u/k_B = 580$ –2600 K) is seen in both the central spaxel and in the outflows (Tables 1 and 2; Fig. 2). Strong OH emission is detected in the four doublets at 79, 84, 119, and 163 μm , arising from levels up to 290 K above the ground state. The OH emission is strongly concentrated on-source, although emission in the 119 μm doublet is also seen in the direction of the red outflow.

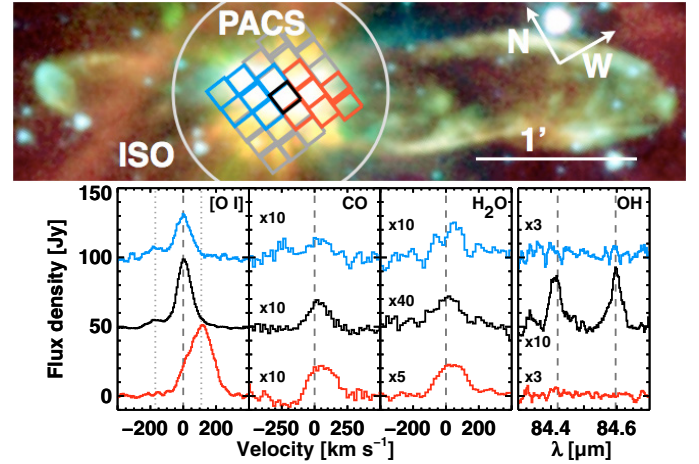


Fig. 1. The [O I] 63 μm , CO 16–15 163 μm , H_2O 2₁₂–1₀₁ 179 μm lines and the OH doublet at 84 μm (possibly blended with a small contribution from CO 31–30), at the central position (08^h25^m43^s.9; –51°00′36″; J2000) and integrated over the red- and blue-shifted outflow lobes. The vertical lines show the velocity of [O I] emission at rest (dashed) and in the blue- and red-shifted jets (dotted). The *Spitzer* image of HH 46 (Velusamy et al. 2007) is shown with the PACS footprint and ISO beam overlaid. The spaxels covering the red- and blue-shifted lobes are indicated with coloured boxes. The central spaxel is shown in black.

Table 1. Line fluxes observed towards HH 46 with PACS.

Spec.	Trans.	λ (μm)	Flux ^a	Spec.	Trans.	λ (μm)	Flux ^a
CO	14–13	186.0	48 ^b	H_2O	2 ₂₁ –2 ₁₂	180.5	<7 ^c
	16–15	162.8	46 ^b		2 ₁₂ –1 ₀₁	179.5	4: b
	18–17	144.8	71 ^b		3 ₀₃ –2 ₁₂	174.6	<22 ^c
	22–21	118.6	33 ^b		3 ₁₃ –2 ₀₂	138.5	14 ^b
	23–22	113.5	78 ^b		4 ₀₄ –3 ₁₃	125.4	<18 ^c
	24–23	108.8	18 b		4 ₁₄ –3 ₀₃	113.5	78 ^b
	29–28	90.2	18 ^b		2 ₂₁ –1 ₁₀	108.1	17 ^b
	30–29	87.2	25:		3 ₂₂ –2 ₁₁	90.0	<27 ^c
	31–30	84.4	74 ^b		8 ₁₈ –7 ₀₇	63.3	<33 ^c
	32–31	81.8	<29 ^c	OH ^e	$\frac{1}{2}, \frac{3}{2} - \frac{1}{2}, \frac{1}{2}$	163.4	<27 ^c
	33–32	79.4	<17 ^c		$\frac{3}{2}, \frac{5}{2} - \frac{1}{2}, \frac{1}{2}$	163.0	22
	36–35	72.8	<23 ^c		$\frac{3}{2}, \frac{5}{2} - \frac{3}{2}, \frac{3}{2}$	119.4	44
C II	$^2\text{P}_{3/2} - ^2\text{P}_{1/2}$	157.7	73 ^b		$\frac{3}{2}, \frac{5}{2} - \frac{3}{2}, \frac{3}{2}$	119.2	38
O I	$^3\text{P}_1 - ^3\text{P}_2$	63.2	1260 ^b		$\frac{3}{2}, \frac{7}{2} - \frac{3}{2}, \frac{5}{2}$	84.6	87 ^b
	$^3\text{P}_0 - ^3\text{P}_2$	145.5	82 ^b		$\frac{3}{2}, \frac{7}{2} - \frac{3}{2}, \frac{5}{2}$	84.4	74 ^b
Blue ^d	$^3\text{P}_1 - ^3\text{P}_2$	63.2	162		$\frac{1}{2}, \frac{1}{2} - \frac{3}{2}, \frac{3}{2}$	79.2	38 ^b
					$\frac{1}{2}, \frac{1}{2} - \frac{3}{2}, \frac{3}{2}$	79.1	55

Notes. ^(a) Flux in the central spaxel, in $10^{-18} \text{ W m}^{-2}$. Values with colons indicate weak detections or detections in only one nod. ^(b) Lines blended. ^(c) 3σ upper limit. ^(d) Blue-shifted [O I] component at $v = -170 \text{ km s}^{-1}$. ^(e) Doublet transitions.

Emission in the [O I] 63 μm and [C II] 158 μm lines is found to be extended over most of the PACS field-of-view. The total flux in these two lines is about 1.5 and 7 times weaker, respectively, in the PACS field ($50'' \times 50''$) than it was in the ISO-LWS beam ($\sim 80''$). Thus, most of the [C II] and some of the [O I] emission must be located within the ISO field but beyond that of PACS or in a relatively smooth background extending out to the PACS nod positions.

The high PACS spectral resolution at 63 μm of $\sim 100 \text{ km s}^{-1}$ allows the [O I] 63 μm emission to be resolved into three velocity components (see Fig. 1). In addition to the main component around $v \approx 0 \text{ km s}^{-1}$ peaking on-source, strong red- and

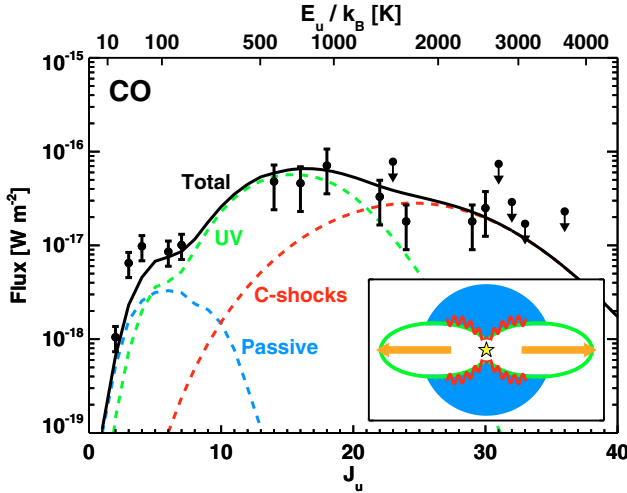


Fig. 2. CO line fluxes observed in the central PACS spaxel ($J_u > 10$) and with APEX ($J_u < 10$). Model fluxes are used to estimate the ratio of flux in a fictive PACS spaxel at the APEX wavelength and the observed APEX flux. Overplotted are predictions from a passively heated envelope (blue), a UV-heated cavity (green), and small-scale shocks in the cavity walls (red). The black line is the sum of the three. A cartoon of the different components is shown in the inset.

blue-shifted [OI] 63 μm emission is detected at 110 and -170 km s^{-1} , respectively, in several spaxels to the SW and NE of the central source. Velocities are consistent with the jet velocities measured in near-IR and optical lines (e.g., Nishikawa et al. 2008; Garcia Lopez et al. 2010).

3. Analysis

Previous observations of HH 46 have revealed many properties of the circumstellar environment including the dense centrally concentrated envelope containing the protostar HH 46 IRS, the presence of warm gas along the outflow walls heated by UV radiation (van Kempen et al. 2009), the shape and size of the outflow cavities, and the presence of jets and shocks (e.g., Velusamy et al. 2007). The temperature (10–250 K) and density ($\sim 10^4$ – 10^9 cm^{-3}) structure of the passively heated envelope have been determined in spherical symmetry by fitting dust radiative transfer models to the spectral energy distribution of the source and the spatial extent of the continuum emission. Using these properties, a set of existing models (Kristensen et al. 2008; van Kempen et al. 2009; Bruderer et al. 2009) is adapted to predict the emission in lines of CO, H_2O , OH, and OI. In the following, focus is placed on analysing emission from the central spaxel.

Line emission is expected to originate in the known circumstellar components: the passively heated spherical envelope, the UV-heated cavity walls, the small-scale shocks along the cavity walls, the jet, and the disk. The jet-driven J -type shock is discussed in Sects. 3.3 and 3.4. Based on the PACS observations of the HD 100546 disk (Sturm et al. 2010), any disk contribution is likely negligible at the distance of HH 46; hence, only the first three components are expected to cause the molecular emission.

For the spherical envelope, the model of van Kempen et al. (2009) is rerun with the new 3D non-LTE radiative transfer code LIME (Brinch & Hogerheijde, in prep.) to obtain fluxes of the higher- J CO lines. The second component, the UV-heated gas in the outflow cavity walls (Spaans et al. 1995; van Kempen et al. 2009), is modelled according to the method of Bruderer et al. (2009). The basis is the same spherical envelope profile, but a 65 000 AU \times 13 000 AU ellipsoidal cavity is now carved out

at an inclination of 53° (Velusamy et al. 2007; Nishikawa et al. 2008). The only free parameter in this scenario is the protostellar FUV luminosity, which is assumed to be $0.1 L_\odot$ (i.e., $G_0 \approx 10^4$ at 100 AU with respect to the interstellar radiation field). The gas temperature in the cavity walls is parameterised from the grid of PDR models by Kaufman et al. (1999) and is typically a few hundred K; the dust temperature and density profiles are unchanged from the spherical model. More details will be reported by Visser et al. (in prep.), who will explore a wider parameter space to assess the viability of other scenarios.

Small-scale shocks created by the outflow along the cavity walls are the third component considered for the molecular emission. Their temperature is typically a few thousand K. The shock emission is computed by tiling a number of 1D C -type shock models along the 2D cavity shape (Kristensen et al. 2008), taking the width of each shock to be the region over which the considered species contributes significantly to the cooling in 1D shock models. This can effectively be considered as an estimate of the beam filling factor. For each density in the range 10^4 – $10^{6.5} \text{ cm}^{-3}$, the emission is computed using the results from Kaufman & Neufeld (1996). The only free parameter in this model is the shock velocity, which is assumed constant along the walls. For the case of CO, a velocity of 20 km s^{-1} reproduces the observations, and this velocity is adopted for the other species as well.

3.1. CO

The PACS data (Sect. 2) are complemented by spectrally resolved $J_u \leq 7$ lines ($E_u/k_B \leq 155 \text{ K}$) detected with APEX ($\Delta v \approx 10 \text{ km s}^{-1}$, van Kempen et al. 2009). The CO/ H_2 abundance ratio in the model is taken to be 1.6×10^{-4} above 20 K and below 10^5 cm^{-3} . In colder regions, freeze-out lowers the CO abundance by a factor of 100.

The model spectra are convolved with the PACS beam at the relevant wavelength and extracted from a $9''.4$ square spaxel at the centre. Figure 2 shows the observations, together with the model predictions from the passive envelope, the UV-heated cavity walls, and the small-scale C -type shocks. Individually, each component only fits part of the data, but together they reproduce the observations over the entire range of rotational levels from $J_u = 2$ – 32 . The results confirm the plausibility of the scenario without excluding other solutions not investigated here.

3.2. H_2O

The passive envelope underproduces the observed H_2O fluxes by two orders of magnitude. Predicting fluxes from any 2D model such as the UV-heated cavity walls is uncertain by an order of magnitude due to challenges of radiative transfer modelling of H_2O . Within these uncertainties, both the UV-heated cavity model and the C -type shock model are able to reproduce the observations independently. The former requires an H_2O gas abundance of only $\sim 10^{-7}$ in the cavity walls and $\sim 10^{-8}$ in the rest of the envelope, as expected from chemical models including photodissociation and freeze-out. The C -type shock component matches the observations if the abundances from Kaufman & Neufeld (1996) are scaled down to $\sim 7 \times 10^{-5}$. This could be accomplished by photodissociation of H_2O in the shocked gas. More detailed modelling, including spatially extended emission and a comparison with spectrally resolved line profiles observed with HIFI, is needed to distinguish these scenarios.

3.3. [OI]

Within the passively heated envelope and cavity walls, the 2D models presented above yield an [OI] 63 μm emission line that

is narrow (3–4 km s⁻¹), optically thick, and weaker than the observed flux by more than three orders of magnitude, for an OI abundance of 10⁻⁶. C-type shocks fail to reproduce the observations by seven orders of magnitude, and are still insufficient even if all H₂O is dissociated into OI. The observed emission is, however, reproduced in a dissociative J-type shock (Neufeld & Dalgarno 1989). Thus, for the central spaxel, where bright emission is seen at the systemic velocity, [OI] may trace the impact of the high-velocity jet on the densest parts of the envelope ($n_{\text{H}} > 10^7 \text{ cm}^{-3}$), causing rapid deceleration from $v \geq 200 \text{ km s}^{-1}$ while cooling the gas through [OI] emission. The observed [OI] 63/145 μm line ratio is ~ 16 in the central spaxel. Shock models predict ratios of 14–20, where the lower ratio applies to higher densities (10⁶ cm⁻³, Neufeld & Dalgarno 1989). The high- v [OI] emission observed in both the central and adjacent spaxels can be produced in fast, dissociative shocks in the much lower density jet itself.

3.4. OH

The OH line ratios were modelled separately for a single-component slab model using an escape probability code with absorbing and emitting dust continuum (similar to Bruderer et al. 2010). Comparison with the observed line ratios and intensities shows that the OH lines likely originate in a high-density and high-temperature region ($n_{\text{H}} \sim 10^7 \text{ cm}^{-3}$, $T_{\text{gas}} > 800 \text{ K}$). Along with the lack of extended emission, this rules out an origin in the photon-heated cavity walls and C-type shocks along the cavity walls. An OH column density of $\sim 10^{16} \text{ cm}^{-2}$ gives the best fit to the observations along with a physical size of the OH emitting region of 0'.5 ($\sim 250 \text{ AU}$). Other solutions are possible and will be discussed in a forthcoming paper (Wampfler et al., in prep.).

The models indicate that better fits are obtained for temperatures higher than what can be accounted for in a passive envelope model. The major competing coolant to OI in a fast, dissociative shock is OH (Neufeld & Dalgarno 1989), and it is therefore likely that some of the OH emission is caused by the jet shock impinging on the inner, dense envelope. Further modelling, including combinations of C- and J-type shocks (Snell et al. 2005), will be explored to constrain the origin of the OH emission.

3.5. Origin of hot gas

Table 3 summarizes the assignment of the various species to the different proposed physical components. It also includes the total far-IR cooling through H₂O, CO, OH, and [OI] lines in the central spaxel. Within our scenario, cooling by CO takes place almost equally through the UV-heated cavity walls and the small-scale C-type shocks. The observed H₂O emission can be accounted for either by UV heating of the cavity walls or by C-type shocks, or a combination. It is impossible to distinguish between the two scenarios at present; however, the total cooling is $5 \times 10^{-3} L_{\odot}$ in both cases using the above models to account for the non-observed line emission.

Cooling through [OI] emission takes place on very small spatial scales, probably related directly to the jet impinging on the envelope walls. OH emission likely arises in the same dissociative shock. The OH cooling in observed lines is $2.4 \times 10^{-3} L_{\odot}$, but the total OH cooling can be an order of magnitude higher if an excitation temperature of 200 K is used to account for non-observed lines. Thus, the total cooling caused by J- and C-type shocks is at least $1.5 \times 10^{-2} L_{\odot}$ or 60% of the total far-IR line cooling. The two other components (passive and UV) are responsible for the remaining 40% of the total cooling. ISO-LWS found

Table 3. Origin of line emission and cooling rates of various species for the HH 46 central spaxel.

Species	Cooling 10 ⁻³ L _⊙	Origin
CO	0.1	Passively heated envelope
CO	3.8	UV-heated cavity walls
CO	2.8	C-type shocks
H ₂ O	0.1	Passively heated envelope
H ₂ O	5.0	UV or C-type shocks
OI	9.5	J-type shock
OH	>2.4	J-type shock
C II	0.1	Surrounding cloud
Total	>23.8	

typical far-IR line cooling rates of $1\text{--}5 \times 10^{-2} L_{\odot}$ (Nisini et al. 2002), comparable to what is observed here. The total cooling of the entire HH 46 system is higher, since only the central spaxel is considered here.

In summary, the *Herschel*-PACS data allow for disentangling and quantifying the energetic processes occurring in deeply embedded protostars. The models indicate, that of the two scenarios previously proposed based on ISO-LWS data, shocks are more important than the passively heated envelope in powering the far-infrared lines. Another component, the UV-heated cavity walls, also plays an important role in producing line emission. HIFI observations resolving emission lines are planned to test the proposed scenario in the framework of the WISH key programme.

Acknowledgements. This work is made possible thanks to the HIFI guaranteed time programme and the PACS instrument builders. We thank Javier Gracia Carpio, Jeroen Bouwman, Bruno Merin, and Bart VandenBussche for help with the PACS data reduction and many funding agencies for financial support. We also thank the referee for comments that improved this paper.

References

- André, P., Ward-Thompson, D., & Barsony, M. 2000, in *Protostars & Planets IV*, ed. V. Mannings, A. P. Boss, & S. S. Russell (Tucson: UAP), 59
- Arce, H. G., Shepherd, D., Gueth, F., et al. 2007, in *Protostars & Planets V*, ed. B. Reipurth, D. Jewitt, & K. Keil (Tucson: UAP), 245
- Bachiller, R., & Tafalla, M. 1999, in *The Origin of Stars and Planetary Systems*, ed. C. J. Lada, & N. D. Kylafis (Dordrecht: Kluwer), 227
- Bruderer, S., Benz, A. O., et al. 2009, *ApJ*, 700, 872
- Bruderer, S., Benz, A. O., van Dishoeck, E. F., et al. 2010, *A&A*, submitted
- Ceccarelli, C., Caux, E., Loinard, L., et al. 1999, *A&A*, 342, L21
- Fich, M., et al. 2010, *A&A*, 518, L86
- García López, R., Nisini, B., Eislöffel, J., et al. 2010, *A&A*, 511, A5
- Giannini, T., Lorenzetti, D., Tommasi, E., et al. 1999, *A&A*, 346, 617
- Jørgensen, J. K., van Dishoeck, E. F., Visser, R., et al. 2009, *A&A*, 507, 861
- Kaufman, M. J., & Neufeld, D. A. 1996, *ApJ*, 456, 611
- Kaufman, M. J., Wolfire, M. G., Hollenbach, D. J., & Luhman, M. L. 1999, *ApJ*, 527, 795
- Kristensen, L. E., Ravkilde, T. L., Pineau des Forêts, G., et al. 2008, *A&A*, 477, 203
- Neufeld, D. A., & Dalgarno, A. 1989, *ApJ*, 344, 251
- Nishikawa, T., Takami, M., Hayashi, M., Wiseman, J., & Pyo, T. 2008, *ApJ*, 684, 1260
- Nisini, B., Giannini, T., & Lorenzetti, D. 2002, *ApJ*, 574, 246
- Nisini, B., et al. 2010, *A&A*, 518, L120
- Pilbratt, G. L., et al. 2010, *A&A*, 518, L1
- Poglitsch, A., et al. 2010, *A&A*, 518, L2
- Snell, R. L., Hollenbach, D., Howe, J. E., et al. 2005, *ApJ*, 620, 758
- Spaans, M., Hogerheijde, M. R., Mundy, L. G., & van Dishoeck, E. F. 1995, *ApJ*, 455, 167
- Sturm, B., et al. 2010, *A&A*, 518, L129
- van Kempen, T. A., van Dishoeck, E. F., Güsten, R., et al. 2009, *A&A*, 501, 633
- Velusamy, T., Langer, W. D., & Marsh, K. A. 2007, *ApJ*, 668, L159
- Visser, R., van Dishoeck, E. F., Doty, S. D., & Dullemond, C. P. 2009, *A&A*, 495, 881

- ¹ Leiden Observatory, Leiden University, PO Box 9513, 2300 RA Leiden, The Netherlands
e-mail: kristensen@strw.leidenuniv.nl
- ² Harvard-Smithsonian Center for Astrophysics, 60 Garden Street, MS 42, Cambridge, MA 02138, USA
- ³ Max-Planck-Institut für Extraterrestrische Physik, Giessenbachstrasse 1, 85748 Garching, Germany
- ⁴ Institute of Astronomy, ETH Zurich, 8093 Zurich, Switzerland
- ⁵ Department of Physics and Astronomy, Denison University, Granville, OH, 43023, USA
- ⁶ Centre for Star and Planet Formation, Natural History Museum of Denmark, University of Copenhagen, Øster Voldgade 5-7, 1350 Copenhagen K., Denmark
- ⁷ Observatorio Astronómico Nacional (IGN), Calle Alfonso XII,3, 28014, Madrid, Spain
- ⁸ Department of Physics and Astronomy, Johns Hopkins University, 3400 North Charles Street, Baltimore, MD 21218, USA
- ⁹ Université de Bordeaux, Laboratoire d'Astrophysique de Bordeaux; CNRS/INSU, UMR 5804, Floirac, France
- ¹⁰ INAF – Istituto di Fisica dello Spazio Interplanetario, Area di Ricerca di Tor Vergata, via Fosso del Cavaliere 100, 00133 Roma, Italy
- ¹¹ Department of Astronomy, University of Michigan, 500 Church Street, Ann Arbor, MI 48109-1042, USA
- ¹² Department of Radio and Space Science, Chalmers University of Technology, Onsala Space Observatory, 439 92 Onsala, Sweden
- ¹³ California Institute of Technology, Division of Geological and Planetary Sciences, MS 150-21, Pasadena, CA 91125, USA
- ¹⁴ School of Physics and Astronomy, University of Leeds, Leeds LS2 9JT, UK
- ¹⁵ INAF – Osservatorio Astrofisico di Arcetri, Largo E. Fermi 5, 50125 Firenze, Italy
- ¹⁶ Centro de Astrobiología, Departamento de Astrofísica, CSIC-INTA, Carretera de Ajalvir, Km 4, Torrejón de Ardoz. 28850, Madrid, Spain
- ¹⁷ Astronomical Institute Anton Pannekoek, University of Amsterdam, Kruislaan 403, 1098 SJ Amsterdam, The Netherlands
- ¹⁸ Department of Astrophysics/IMAPP, Radboud University Nijmegen, PO Box 9010, 6500 GL Nijmegen, The Netherlands
- ¹⁹ LERMA and UMR 8112 du CNRS, Observatoire de Paris, 61 Av. de l'Observatoire, 75014 Paris, France
- ²⁰ University of Waterloo, Department of Physics and Astronomy, Waterloo, Ontario, Canada
- ²¹ Observatorio Astronómico Nacional, Apartado 112, 28803 Alcalá de Henares, Spain
- ²² INAF – Osservatorio Astronomico di Roma, 00040 Monte Porzio catone, Italy
- ²³ SRON Netherlands Institute for Space Research, PO Box 800, 9700 AV, Groningen, The Netherlands
- ²⁴ National Research Council Canada, Herzberg Institute of Astrophysics, 5071 West Saanich Road, Victoria, BC V9E 2E7, Canada
- ²⁵ Department of Physics and Astronomy, University of Victoria, Victoria, BC V8P 1A1, Canada
- ²⁶ Department of Physics and Astronomy, San Jose State University, One Washington Square, San Jose, CA 95192, USA
- ²⁷ Department of Astronomy, Stockholm University, AlbaNova, 106 91 Stockholm, Sweden
- ²⁸ California Institute of Technology, Cahill Center for Astronomy and Astrophysics, MS 301-17, Pasadena, CA 91125, USA
- ²⁹ Max-Planck-Institut für Radioastronomie, Auf dem Hügel 69, 53121 Bonn, Germany
- ³⁰ Jet Propulsion Laboratory, California Institute of Technology, Pasadena, CA 91109, USA
- ³¹ Department of Physics and Astronomy, University of Calgary, Calgary, T2N 1N4, AB, Canada
- ³² Instituto de RadioAstronomía Milimétrica, Avenida Divina Pastora, 7, Núcleo Central E 18012 Granada, Spain
- ³³ Kapteyn Astronomical Institute, University of Groningen, PO Box 800, 9700 AV, Groningen, The Netherlands
- ³⁴ KOSMA, I. Physik. Institut, Universität zu Köln, Zùlpicher Str. 77, 50937 Köln, Germany
- ³⁵ California Institute of Technology, 1200 E. California Bl., MC 100-22, Pasadena, CA 91125, USA
- ³⁶ Experimental Physics Dept., National University of Ireland Maynooth, Co. Kildare. Ireland

Table 2. Line fluxes observed towards HH 46 with PACS^a.

Species	Transition	Area (square arcsec)		Central Spaxel	Red Outflow	Blue Outflow	All 25 Spaxels
		λ_{lab} (μm)	E_u/k_B (K)	88 Flux	530 Flux ($10^{-18} \text{ W m}^{-2}$)	530 Flux	2200 Flux
CO	14–13	185.999	580.5	48 ± 4	27 ± 2	18 ± 2	108 ± 7
	16–15	162.812	751.7	46 ± 5	27 ± 2	13 ± 3	80 ± 8^b
	18–17	144.784	945.0	71 ± 7	27 ± 2	<14	67 ± 30^b
	22–21	118.581	1397.4	33 ± 7	<34	<27	44 ± 8
	23–22 ^c	113.458	1524.2	78 ± 11	15 ± 3	<14	78 ± 13^b
	24–23	108.763	1656.5	18 ± 6	<14	<26	38 ± 9
	29–28	90.163	2399.8	18 ± 3	<26	<19	28 ± 6
	30–29	87.190	2564.8	25 ± 4	<14	<21	<55
	31–30 ^d	84.411	2735.3	74 ± 6	<31	<22	55 ± 7^b
	32–31	81.806	2911.2	<29	<40	<40	<61
	33–32	79.360	3092.5	<17	<27	<41	<57
	36–35	72.843	3668.8	<23	<49	<51	<136
H ₂ O	2 ₂₁ –2 ₁₂	180.488	194.1	<7	<9	<9	<14
	2 ₁₂ –1 ₀₁	179.527	114.4	4 ± 2	46 ± 3	16 ± 2	82 ± 7
	3 ₀₃ –2 ₁₂	174.626	196.8	<22	24 ± 2	<21	54 ± 7
	3 ₁₃ –2 ₀₂	138.528	204.7	14 ± 4	18 ± 3	<10	34 ± 8
	4 ₀₄ –3 ₁₃	125.354	319.5	<18	<6	14 ± 3	<24
	4 ₁₄ –3 ₀₃ ^c	113.537	323.5	78 ± 11	15 ± 3	<14	78 ± 13^b
	2 ₂₁ –1 ₁₀	108.073	194.1	17 ± 7	16 ± 3	21 ± 4	64 ± 11
	3 ₂₂ –2 ₁₁	89.988	296.8	<27	<22	<49	<110
	8 ₁₈ –7 ₀₇	63.324	1070.7	<33	<10	<22	<43
OH ^e	$\frac{1}{2}, \frac{3}{2} - \frac{1}{2}, \frac{1}{2}$	$\left\{ \begin{array}{l} 163.396 \\ 163.015 \end{array} \right.$	$\left\{ \begin{array}{l} 269.8 \\ 270.2 \end{array} \right.$	$\left\{ \begin{array}{l} <27 \\ 22 \pm 4 \end{array} \right.$	$\left\{ \begin{array}{l} <4 \\ <18 \end{array} \right.$	$\left\{ \begin{array}{l} <9 \\ <5 \end{array} \right.$	$\left\{ \begin{array}{l} <10 \\ 20 \pm 4 \end{array} \right.$
	$\frac{3}{2}, \frac{5}{2} - \frac{3}{2}, \frac{3}{2}$	$\left\{ \begin{array}{l} 119.441 \\ 119.234 \end{array} \right.$	$\left\{ \begin{array}{l} 120.5 \\ 120.7 \end{array} \right.$	$\left\{ \begin{array}{l} 44 \pm 7 \\ 38 \pm 9 \end{array} \right.$	$\left\{ \begin{array}{l} 49 \pm 5 \\ 25 \pm 4 \end{array} \right.$	$\left\{ \begin{array}{l} <7 \\ <19 \end{array} \right.$	$\left\{ \begin{array}{l} 86 \pm 12^b \\ 71 \pm 15 \end{array} \right.$
	$\frac{3}{2}, \frac{7}{2} - \frac{3}{2}, \frac{5}{2}$ ^d	$\left\{ \begin{array}{l} 84.597 \\ 84.420 \end{array} \right.$	$\left\{ \begin{array}{l} 290.5 \\ 291.2 \end{array} \right.$	$\left\{ \begin{array}{l} 87 \pm 6 \\ 74 \pm 6 \end{array} \right.$	$\left\{ \begin{array}{l} <14 \\ <31 \end{array} \right.$	$\left\{ \begin{array}{l} <27 \\ <22 \end{array} \right.$	$\left\{ \begin{array}{l} 95 \pm 10 \\ 55 \pm 7^b \end{array} \right.$
	$\frac{1}{2}, \frac{1}{2} - \frac{3}{2}, \frac{3}{2}$	$\left\{ \begin{array}{l} 79.179 \\ 79.116 \end{array} \right.$	$\left\{ \begin{array}{l} 181.7 \\ 181.9 \end{array} \right.$	$\left\{ \begin{array}{l} 38 \pm 5 \\ 55 \pm 7 \end{array} \right.$	$\left\{ \begin{array}{l} <41 \\ <34 \end{array} \right.$	$\left\{ \begin{array}{l} <37 \\ <35 \end{array} \right.$	$\left\{ \begin{array}{l} 93 \pm 13 \\ 87 \pm 10 \end{array} \right.$
O I	³ P ₀ – ³ P ₂	145.525	326.6	82 ± 8	68 ± 4	48 ± 3	208 ± 14
	³ P ₁ – ³ P ₂	63.184	227.7	1260 ± 54	186 ± 28	420 ± 20	1870 ± 80
	$v = -170 \text{ km s}^{-1f}$			162 ± 12	–	90 ± 8	282 ± 51
	$v = +110 \text{ km s}^{-1f}$			–	1230 ± 52	–	1510 ± 100
C II	² P _{3/2} – ² P _{1/2}	157.741	91.2	73 ± 6	77 ± 4	140 ± 6	505 ± 23

Notes. ^(a) Fluxes are measured from Gaussian fits. Lines marked with a colon are only weakly detected. Listed uncertainties are 68% confidence intervals, upper limits are 95% confidence intervals. The uncertainties do not include the 50% error margin in the relative spectral response function. ^(b) The total flux is less than the combined flux from the central spaxel, the red outflow and the blue outflow. This is a result of higher noise in the spectrum summed over all spaxels, leading to a different fit and PSF over-correction. ^(c) The CO 23–22 and H₂O 4₁₄–3₀₃ lines at 113.5 μm are blended. ^(d) The CO 31–30 and OH 3/2,7/2–3/2,5/2 lines at 84.4 μm are blended. ^(e) Doublet transitions. ^(f) Blue- and red-shifted components of the [O I] 63.2 μm line. The blue component is not detected in the spaxels covering the red outflow, and vice versa. Furthermore, the red component is not detected in the central spaxel.