



**HAL**  
open science

## Diagenetic Evolution and Porosity Destruction of Turbiditic Hybrid Arenites and Siliciclastic Sandstones of Foreland Basins: Evidence from the Eocene Hecho Group, Pyrenees, Spain

H. Mansurbeg, M.A. Caja, R. Marfil, S. Morad, E. Remacha, Daniel Garcia, T. Martín-Crespo, M.A.K. El-Ghali, J.P. Nystuen

### ► To cite this version:

H. Mansurbeg, M.A. Caja, R. Marfil, S. Morad, E. Remacha, et al.. Diagenetic Evolution and Porosity Destruction of Turbiditic Hybrid Arenites and Siliciclastic Sandstones of Foreland Basins: Evidence from the Eocene Hecho Group, Pyrenees, Spain. *Journal of Sedimentary Research*, 2009, 79 (9), pp.711-735. 10.2110/jsr.2009.060 . hal-00495021

**HAL Id: hal-00495021**

**<https://hal.science/hal-00495021>**

Submitted on 2 Aug 2010

**HAL** is a multi-disciplinary open access archive for the deposit and dissemination of scientific research documents, whether they are published or not. The documents may come from teaching and research institutions in France or abroad, or from public or private research centers.

L'archive ouverte pluridisciplinaire **HAL**, est destinée au dépôt et à la diffusion de documents scientifiques de niveau recherche, publiés ou non, émanant des établissements d'enseignement et de recherche français ou étrangers, des laboratoires publics ou privés.

## Diagenetic evolution and porosity destruction of turbiditic hybrid arenites and siliciclastic sandstones of foreland basins: Evidence from the Eocene Hecho group, Pyrenees, Spain

H. MANSURBEG<sup>(1,2)</sup>, M.A. CAJA<sup>(3)</sup>, R. MARFIL<sup>(3)</sup>, S. MORAD<sup>(1,4)</sup>, E. REMACHA<sup>(5)</sup>, DANIEL GARCIA<sup>(6)</sup> \*, T. MARTÍN-CRESPO<sup>(7)</sup>, M.A.K. EL-GHALI<sup>(8)</sup>, J.P. NYSTUEN<sup>(9)</sup>

- (1) Department of Earth Sciences, Uppsala University, Villavägen 16, SE 752 36 Uppsala, Suède
- (2) AGR Petroleum, Karenslyst allé 4, P.O. Box 444, NO-0278 Oslo, Norway
- (3) Departamento de Petrología y Geoquímica, Facultad de Geología, Universidad Complutense de Madrid, Avenida Jose Antonio Novais, s/n., 28040-Madrid, Espagne
- (4) Department of Petroleum Geosciences, The Petroleum Institute, P.O. Box 2533, Abu Dhabi, United Arab Emirates
- (5) Departament de Geologia, Universitat Autònoma de Barcelona, 08193 Bellaterra, Espagne
- (6) Ecole Nationale Supérieure des Mines de Saint Etienne, Centre SPIN ; Département GENERIC ; UMR CNRS, 6524 LMV ; 158 Cours Fauriel ; 42023 Saint-Étienne Cedex 2, France
- (7) ESCET, Universidad Rey Juan Carlos, Edificio Departamental I, 28933 Madrid, Espagne
- (8) Department of Petroleum Geosciences, University Brunei Darussalam, Tungku Link, Gadong BE 1410, Brunei Darussalam
- (9) Department of Geosciences, University of Oslo, P. O. Box 1047, Blindern, Oslo, Norvège

### Abstract

This study aims to unravel the impact of diagenetic alterations on porosity loss of foreland-basin turbiditic hybrid arenites and associated siliciclastic sandstones of the Eocene Hecho Group (south-central Pyrenees, Spain).

In this succession, hybrid arenites and calcilithites are extensively cemented by mesogenetic calcite cement ( $\delta^{18}\text{O}_{\text{V-PDB}} = -10.0\text{‰}$  to  $-5.8\text{‰}$ ;  $T_{\text{h}}$ , mode =  $80^\circ\text{C}$ ; salinity mode = 18.8 wt% eq. NaCl), Fe-dolomite ( $\delta^{18}\text{O}_{\text{V-PDB}} = -8.5\text{‰}$  to  $-6.3\text{‰}$ ) and trace amounts of siderite. The extent of carbonate cementation is interpreted to be related to the amounts of extrabasinal and intrabasinal carbonate grains, which provided nuclei and sources for the precipitation and growth of carbonate cements. Other diagenetic alterations, such as pyrite and albitization, had no impact on reservoir quality. Scarce early diagenetic cements, coupled with abundant ductile carbonate and siliciclastic framework grains, have led to rapid porosity loss owing to compaction. Conversely, abundant quartz in the sandstones prevented rapid loss of porosity by mechanical compaction.

Reservoir quality was affected by mesogenetic cementation by quartz overgrowths, calcite and dolomite intergranular pressure dissolution of quartz grains, and formation of fracture-filling calcite cement ( $\delta^{18}\text{O}_{\text{V-PDB}}$  values from  $-10.4\text{‰}$  to  $-7.8\text{‰}$ ;  $T_{\text{h}}$  temperatures of  $\approx 150^\circ\text{C}$ ), which

---

\* Corresponding author : [garcia@emse.fr](mailto:garcia@emse.fr)

are attributed to deep circulation of hot meteoric waters during extensional stages of tectonism. The results of this study illustrate that diagenetic evolution pathways of the arenites and sandstones are closely linked to the variation in detrital composition, particularly the proportion and types of extrabasinal noncarbonates, extrabasinal carbonates, and intrabasinal carbonate grains. These insights suggest that marine turbiditic hybrid arenites and calcilithites of foreland basins are subjected to more rapid and extensive porosity loss owing to compaction and cementation than associated siliciclastic sandstones. Degradation of reservoir quality makes these hybrid arenites, calcilithites, and sandstones suitable as tight gas reservoirs, but only if fracture porosity and permeability develop during tectonic deformation.

**Keywords:**

*Arenites; Siliciclastic Sandstones; Foreland Basins; Eocene Hecho Group; Pyrenees; Spain; porosity loss; diagenetic evolution; carbonate cementation; Reservoir quality*

## **I. Introduction**

The diagenetic evolution of sandstones is complex and controlled by several interrelated parameters, including the tectonic setting of the basin and provenance (Morad *et al.* 2000), which exert a profound impact on the composition of the extrabasinal sand grains (Dickinson and Suczek 1979; Dickinson and Valloni 1980; Dickinson *et al.* 1983; Dickinson 1984; Lawton 1986; Schwab 1986). Although the impact of detrital composition on the mechanical and chemical stability and, hence, on burial diagenesis of sandstones is well documented (Bloch 1994), comparative diagenetic and related reservoir-quality evolution pathways of foreland-basin hybrid arenites and of closely associated siliciclastic sandstones are relatively poorly explored. Furthermore, only rarely is the diagenesis of such arenites integrated with the depositional facies and tectonostratigraphic evolution of the basins (*e.g.*, Scholle 1971; Spadafora *et al.* 1998).

To address these gaps, this study explores the Hecho Group (southcentral Pyrenees) of the Aínsa–Jaca foreland Basin, Spain. Although the group has been subjected to intensive sedimentological, sequence stratigraphic, and tectonostratigraphic studies (Remacha *et al.* 1995; Soto and Casas 2001; Remacha *et al.* 2003; Jones *et al.* 2005; Remacha *et al.* 2005; Falivene *et al.* 2007; Bakke *et al.* 2008) because it is considered as world-class analogue for numerous deep-water turbidite reservoirs (Labourdette *et al.* 2008), less attention is given to diagenetic processes accounting for the pervasive porosity destruction of the turbiditic arenites (Fontana *et al.* 1989; Caja *et al.* 2007; Garcia *et al.* 2007). Elucidation of the impact of diagenesis on reservoir quality of marine turbidites is important because these deposits represent some of the foremost poorly explored. Furthermore, only rarely is the diagenesis of such arenites integrated with the depositional facies and tectonostratigraphic evolution of the basins (*e.g.*, Scholle 1971; Spadafora *et al.* 1998).

To address these gaps, this study explores the Hecho Group (southcentral Pyrenees) of the Aínsa–Jaca foreland Basin, Spain. Although the group has been subjected to intensive sedimentological, sequence stratigraphic, and tectonostratigraphic studies (Remacha *et al.* 1995; Soto and Casas 2001; Remacha *et al.* 2003; Jones *et al.* 2005; Remacha *et al.* 2005; Falivene *et al.* 2007; Bakke *et al.* 2008) because it is considered as world-class analogue for numerous deep-water turbidite reservoirs (Labourdette *et al.* 2008), less attention is given to diagenetic processes accounting for the pervasive porosity destruction of the turbiditic arenites (Fontana *et al.* 1989; Caja *et al.* 2007; Garcia *et al.* 2007). Elucidation of the impact of diagenesis on reservoir quality of marine turbidites is important because these deposits represent some of the foremost important frontiers for hydrocarbon exploration (Spadafora *et al.* 1998; dos Anjos *et al.* 2000; Vilasi *et al.* 2006; De Ros and Goldberg 2007; Dutton 2008; Mansurbeg 2007; Mansurbeg *et al.* 2008). The results of this study illustrate the importance of tectonostratigraphy, depositional facies, and diagenetic evolution on the spatial and temporal distribution of reservoir quality, and hence aid hydrocarbon exploration in marine turbiditic arenite successions deposited in foreland basins.

## II. Geological background

The Pyrenees Mountains are an Alpine chain formed as a fold and thrust belt during the Late Cretaceous to early Miocene at the collision front between the Iberian and the Eurasian plates as a result of roughly north–south crustal contraction (Figure 1). At lithospheric scale, there are two main features (Muñoz 1992; Teixell 1998), including: (a) subducted Iberian lower crust beneath Eurasia, and (b) delaminated orogenic prism overlying the lower crust showing an asymmetric, fan-shaped body.

Within the orogenic prism, south-vergent structures dominate in number and extension, and form the south-Pyrenean zone, including the study area (Figure 1). Bedrock in this zone includes: (i) a Hercynian basement with granitoids and low-grade metamorphic rocks, (ii) a Mesozoic preorogenic sedimentary succession up to late Santonian, (iii) a synorogenic assemblage of Upper Cretaceous to lower Miocene sedimentary rocks, and (iv) a post-tectonic sedimentary succession, which is developed mostly in the Ebro basin (Figure 1).

The Eocene Hecho Group strata (Mutti *et al.* 1972) consist of a succession of turbidite systems filling a foredeep, here referred to as a turbidite wedge. The succession consists of five major unconformity-bounded tectonostratigraphic units, or TSUs (Remacha *et al.* 2003; Remacha *et al.* 2005), which reach a maximum thickness of about 4500 m (Figure 2). The boundaries between the TSUs record the main basin-modifying events and the greater stepwise depocenter migration onto the gently sloping margin of the foreland basin (Figure 2). Consequently, the tectonic signature is expressed at the boundaries of the TSUs at south-central Pyrenees scale, with these unconformities extending into adjacent basins. Thus, the stratigraphic succession of TSUs within the turbidite basin represents the more practical division that is linking major units. The TSUs can also be expressed in both the time-equivalent fluviodeltaic domain (Figure 3), developed to the east on a thrust-top basin (Ager–Tresp–Graus Basin), and the associated carbonate ramps of the southern margin of the foreland basin.

The five turbidite wedges (TSUs) fill the basin floor of a series of successive narrow and elongated foredeeps that are strongly controlled by the tectonic evolution of the basin. Each wedge consists of two main growth stages (*cf.* Mutti *et al.* 1985a; Mutti *et al.* 1985b): a lower sandy stage (type I and II), transitionally evolving upward into a muddy stage (type III) (Figure 3). The sandy deposits have a single entry point to the southeast (submarine canyon head) with the inner segment of the foredeep trending north–south. In the youngest turbidite systems of TSU-5, the general sediment entry point is dominant yet there was a northern supply known as the Rapitán system (Remacha *et al.* 1995), located North of Jaca.

## III. Methods

A total of 241 very fine- to coarse-grained arenite samples were collected from fresh outcrops of four turbidite systems (TSU2–TSU5) of the Hecho Group (Figures 4, 5). Samples include various depositional facies within the Hecho Group (*i.e.*, channel, channel-to-lobe transition, overbank, and sheetlike lobes; Figure 4A). Double-polished thin sections from each sample were stained for carbonates (alizerin red-s and potassium ferricyanide). Modal analyses from 84 representative samples (TSU-2: n = 6, TSU-3: n = 29, TSU-4: n = 25, and TSU-5: n = 21) with medium-sand median grain size (0.25–0.5 mm) and moderate to poor sorting were used to minimize compositional differences due to grain-size variations. Quantification of framework grains, porosity, and diagenetic minerals were obtained by counting 300 points per thin section. Modal abundances of framework grains are reported normalized to 100%, whereas abundances of diagenetic components and porosity are relative to total rock volume (*i.e.*, 300 counted points). Cathodoluminescence (CL) microscopy was carried out using a Technosyn 8200 MkII using 12–16 kV accelerating voltage, 300–350  $\mu$ A beam current, and 0.2–0.1 Torr vacuum pressure. The chemical composition of carbonate cements was determined by electron microprobe analysis (EMP) using a JEOL JXA-8900 with four detectors. Double-polished samples were coated with carbon film. Microprobe operation conditions were 15 kV accelerating voltage, 20 nA beam current, and 10  $\mu$ m beam size.

Detection limits were approximately 250 ppm for Mn, 200 ppm for Fe, 100 ppm for Mg, 400 ppm for Ca, and 270 ppm for Sr. For comparison purposes, the results were normalized to 100 mole % of CaCO<sub>3</sub>, MgCO<sub>3</sub>, FeCO<sub>3</sub>, and MnCO<sub>3</sub>.

Bulk-rock stable carbon and oxygen ( $\delta^{13}\text{C}$  and  $\delta^{18}\text{O}$ ) isotope analyses were conducted on carbonate cement and detrital carbonate grains in 21 samples. Two steps of reaction with phosphoric acid were used to separate calcite (CO<sub>2</sub> extracted after three hours at 25°C) from dolomite (CO<sub>2</sub> extracted after 24 hours at 50°C) in whole-rock powders (Al-Aasm *et al.* 1990). Isotopic ratios are reported in per mil relative to the V-PDB standard. Values were calibrated using NBS-19 as the primary standard, and analytical precision was better than 0.05‰.

Thirty polished sections were studied for chemical composition of feldspars and were then examined in BSE images, using a JEOL JXA-8900 electron microprobe with four detectors (15 kV accelerating voltage, 21.5 nA beam current, and 5  $\mu\text{m}$  beam size). Fluid-inclusion microthermometry was carried out on a Linkam THMSG 600 heating–cooling stage attached to an Olympus BH-2 microscope equipped with a longfocal-distance lens (80 X). The apparatus was calibrated at low temperature by inclusion of pure CO<sub>2</sub> in topaz (-56.6°C) and synthetic inclusions of pure water in quartz (0.015°C) and at high temperature by known standard melting temperature provided by Merck. Vitrinite reflectance analyses included the measure of up to 100 points per sample in the organic matter. Vitrinite fragments displaying evidence of recycled origin were not observed in the studied samples.

## IV. Results detrital composition

### IV.1. Hybrid Arenites and Calclithites

Noncarbonate extrabasinal (NCE), carbonate extrabasinal (CE), and carbonate intrabasinal (CI) components (*sensu* Zuffa 1980) of the Hecho Group arenites (Figure 6A) reveal that TSU-3 (Torla, Broto, Gerbe, and Cotefablo turbidite systems), TSU-4 (Banastón turbidite system) and TSU-5 (Aínsa, Morillo, and Guaso turbidite systems) are made up of hybrid arenites (*sensu* Zuffa 1980) and calclithites (*sensu* Pettijohn *et al.* 1972). Calclithites are rich in CE grains, such as dolostones, dolomicrite, discrete rounded dolomite crystals with grain size similar to other grain types, grainstones, sparitic and micritic limestones, micritic fossiliferous limestones, and discrete sparitic crystals (Table 1). Hybrid arenites are characterized by the occurrence of CI grains, which include mainly Eocene foraminifera and skeletal fragments of shallow-water organisms (foramol facies), intraclasts, peloids, and phosphate fragments (Table 1).

Below, “hybrid arenites” refers to both hybrid arenites (*sensu stricto*) and calclithites to simplify the comparison of diagenetic processes affecting carbonate-rich arenites and siliciclastic sandstones.

Total feldspar content in the hybrid arenites is variable, from 1% to 18% (of total rock volume) but can reach up to 41% (Figure 6B). K-feldspar and plagioclase are partly replaced by clay minerals and carbonates. Kfeldspar content ranges from 1% up to 8%, (TSU-3, Torla), and plagioclase ranges from 1% to 16% (TSU-4, Banastón 1 and 2; Table 1). Monocrystalline quartz (16% to 28%) is more abundant than polycrystalline quartz grains (5% to 9%). Chert grains range in abundance from 1% to 3%, lithic rock fragments from 1% to 3%, and mica (dominantly muscovite) and heavy minerals are present in amounts less than 1%.

Abundance of the lithic rock fragments and extrabasinal CE (Figure 6C) increases upwards, from 41% in TSU-3 to 46% in TSU-4 to 55% in TSU-5 (Table 1). Lithic grains include metamorphic (MRF), plutonic (PRF), and sedimentary (SRF) rock fragments. The TSU-3 arenites contain dominantly SRF (up to 1%), whereas the TSU-4 and TSU-5 contain greater amounts of SRF (2% and 3%, respectively) and MRF (3% and 1%, respectively) than PRF (1% in TSU-4 and TSU-5). The MRF are of high-, medium-, and low-grade origins (phyllites and metasandstones). Sedimentary rock fragments, which dominate in TSU-3, are mainly sandstones, mudrocks, and chert. Other lithic grains include minor amounts of volcanic rock fragments, subvolcanic alkaline (basalt), and acidic (andesite–rhyolite), which are most abundant in TSU-5 (Table 1). Total feldspar content increases upwards, from 10% in TSU-3,

to 16% in TSU-4, to 16% in TSU-5, (Table 1). Abundance of monocrystalline and polycrystalline quartz grains decreases from TSU-3 to TSU-5 (79% in TSU-3, 64% in TSU-4, and 63% in TSU-5).

#### IV.2. Sandstones

The sandstones occur only in the lowermost unit of TSU-2. Plotted on a QFL ternary diagram (Q, quartz; F, feldspars; L, lithic fragments, including chert of volcanic and sedimentary origin; Pettijohn *et al.* 1972), the sandstones are classified as quartzarenites (Figure 6B). Monocrystalline quartz is more abundant (up to 67%) than polycrystalline grains (up to 18%). Detrital feldspars (<6%) include equal proportions of plagioclase and K-feldspars. Lithic grains in the siliciclastic sandstones are scarce (<2%) and include metamorphic and sandstone rock fragments. Conversely, CE grains are abundant (up to 40%, average of 18%; Figure 6C), which include dominantly dolostone (up to 13%), micritic limestones (up to 10%), and bioclasts (up to 8%; Table 1). Muscovite occurs up to 3%, and heavy minerals, mainly tourmaline and zircon, are present in minor amounts, up to 2%.

### V. Petrology and chemistry of diagenetic minerals

#### V.1. Calcite Cement

Intragranular, intergranular, and scarce fibrous circumgranular calcite cement occurs in the siliciclastic sandstones and the hybrid arenites but is most abundant in the hybrid arenites of TSU-5, in which they compose up to 31% of the rock (Table 1). Intragranular ferroan calcite cement displays reddish-brown luminescence and equant mosaic texture, and engulfs pyrite in the skeletal grains, particularly the foraminifera (Figures 7A–F). The chemical composition of this calcite is similar in all turbidite systems (Figure 8, Table 2). Blocky to poikilotopic, ferroan calcite crystals occur as grain-displacive, intergranular cement (150–1200  $\mu\text{m}$ ; Table 1, Figures 9A, B). This cement displays various luminescence colors, including: (i) red circumgranular crystals engulfed by nonluminescent calcite (Figures 9C, D), and (ii) nonluminescent to dark-red calcite crystals (Figures 9E, F). Small amounts of calcite cement occur also as syntaxial overgrowths around echinoderms being engulfed by, and hence predating, intergranular poikilotopic calcite cement.

Electron microprobe analyses revealed that the intergranular and intragranular carbonate cements are ferroan calcite (Table 2; Figure 8). Fe content ranges from 630 to 15981 ppm in all TSU, Mn is up to 1231 ppm, Ba is up to 2553 ppm, and Sr varies nonsystematically within the different TSU from below the detection limit up to 12143 ppm (Table 3).

Intergranular calcite cement in arenites from TSU-4 (Banastón 5) contains primary fluid inclusions based on their occurrence along crystal growth lines. Homogenization temperatures ( $T_h$ ) range from 70°C to 120°C, with modal values of 80°C. Final melting of ice ranges between -14.2 and -17°C (mode -15.2°C), indicating salinities of 17.9–20.2 wt % eq. NaCl (mode = 18.8 wt % eq. NaCl). Eutectic temperatures lower than -40°C are characteristic of the H<sub>2</sub>O–NaCl–(CaCl<sub>2</sub>) system. Scarce, small (<5–40  $\mu\text{m}$ ), primary fluid inclusions in vein-filling calcite cement show higher  $T_h$  values (145 to 162°C; mode =150°C) than those measured in the intergranular cement. Final melting of ice displays values from -0.8 to -2°C, indicating relatively low salinities (1.3 to 3.3 wt % eq. NaCl; mode of 2.3 wt % eq. NaCl). Intergranular calcite cement has  $\delta^{18}\text{O}_{\text{V-PDB}}$  values that range from -10.0‰ to -5.8‰ and  $\delta^{13}\text{C}_{\text{V-PDB}}$  from -2.7‰ to +0.4‰ (Table 4).

The red luminescent, fibrous circumgranular calcite cement (40–60  $\mu\text{m}$  wide) is most abundant in the sandstones of the TSU-2, *i.e.*, in the lowermost and most deformed tectonostratigraphic unit (Figures 10A, B). This cement shows the highest Sr content among the carbonate cements (1640 to 5978 ppm), whereas Fe, Mn, and Ba contents are relatively low (2340 to 6179 ppm; up to 720 ppm; and up to 484 ppm, respectively) (Tables 2 and 3, Figures 8). Fibrous calcite cement has  $\delta^{18}\text{O}_{\text{V-PDB}}$  values close to -9.7‰ and  $\delta^{13}\text{C}_{\text{V-PDB}}$  values varying from +0.7‰ to +0.4‰ (Table 4; Figure 11).

## V.2. Vein Calcite

Vein calcite, which is common in siliciclastic sandstones of TSU-2 and occasionally in the lowermost part of the hybrid arenite units (TSU-3), occurs as prismatic to coarse blocky crystals (>2 mm: Figure 10C, D) with curved faces and concavo-convex and sutured intercrystalline contacts. Barite crystals are scattered between the blocky calcite crystals. Some of the calcite crystals are saddle shaped with sweeping extinction, and curved crystal faces occur in the veins. Vein, blocky, and prismatic calcites have  $\delta^{18}\text{O}_{\text{V-PDB}}$  values from -10.4‰ to -7.8‰ and  $\delta^{13}\text{C}_{\text{V-PDB}}$  from -1.8‰ to -1.4‰ (Table 4, Figure 11).

## V.3. Dolomite Cement and Overgrowths

Dolomite cement occurs in small amounts in the siliciclastic sandstones and in the hybrid arenites but may reach amounts as high as 23% in sandstones from TSU-2 and up to 12% in the hybrid arenites of TSU-5 (Guaso unit; Table 1). Dolomite cement occurs as small (<20 $\mu\text{m}$ ), scattered crystals, or as aggregates of few crystals in the intergranular pores or as rims around the framework grains (Figures 9A, B, 11A, B). These scattered dolomite rhombs, which occur in small amounts (<2%) in all TSUs, are engulfed by, and hence predate, intergranular ferroan calcite cement (Figures 12A, B). No textural differences were observed between the dolomite cement in the siliciclastic sandstones and the hybrid arenites.

Dolomite cement occurs also as syntaxial overgrowths (50–100  $\mu\text{m}$  wide) around detrital monocrystalline dolomite grains present in the siliciclastic sandstones and the hybrid arenites (Table 1). The dolomite core is nonluminescent, whereas the overgrowths show bright orange luminescence (Figures 12C, D). Two zones of dolomite overgrowths were distinguished using backscattered electron imaging (Figures 12E, F). The early dolomite overgrowth is characterized by relatively low Mn and Fe contents (up to 1928 ppm and 84009 ppm, respectively), whereas the later overgrowths are richer in Mn and Fe (up to 1928 ppm and 84009 ppm, respectively; Table 2). The small amounts and small size of the overgrowths precluded obtaining separate isotopic analyses for the diagenetic and detrital dolomite. Bulk detrital dolomite and the overgrowths have  $\delta^{18}\text{O}_{\text{V-PDB}}$  values that range from -8.5‰ to -6.1‰ and  $\delta^{13}\text{C}_{\text{V-PDB}}$  from -1.2‰ to + 0.7‰ (Figure 11, Table 4) and are, thus, largely similar to stable-isotope values for some of the intergranular calcite cements. Some of the samples contain trace amounts of siderite cement (<1%; occasionally up to 10% in calcilithites of the Banastón 5 unit) composed of small (<20  $\mu\text{m}$ ) scattered crystals or groups of few crystals replacing carbonate bioclasts and lithic grains.

## V.4. Albite

Feldspar grains in the sandstones and the hybrid arenites display petrographic features similar to albitized feldspars described by Morad (1986), Morad *et al.* (1990), and Saigal *et al.* (1988), such as the irregular and obliterated twinning planes, and the presence of untwinned, vacuolated feldspar grains that display patchy extinction patterns.

Nonluminescent diagenetic albite occurs as overgrowths on primary green-to-blue luminescent plagioclase. Diagenetic albite overgrowths on plagioclase and albitized K-feldspar grains are engulfed by, and hence predate, ferroan calcite cement (Figures 13A, B). Most of the diagenetic albite has replaced K-feldspar and plagioclase (Figures 13C, D). In many cases, calcite cement has selectively replaced the non-albitized parts of the detrital feldspar while the albitized part remained unaffected (Figures 13E, F). Electron microprobe analysis of albite overgrowths shows nearly pure end-member composition (99.9 mol % Ab), whereas albite replacing plagioclase grains has more variable composition (*nil* to 2.6 mol % An; Table 5, Figure 14). Scarce, coarse barite crystals are closely associated with albitized K-feldspars.

## V.5. Quartz and Pyrite

Quartz cement occurs as syntaxial overgrowths around the monocrystalline quartz grains (up to 4% in TSU-5, Morillo unit; Table 1). Pyrite occurs in trace amounts (<1%) as framboids within carbonate bioclasts in most of the studied samples. Pyrite is engulfed by, and thus predates, intergranular, coarsely crystalline, ferroan calcite cement (Figures 15A, B). Organic matter associated with pyrite is composed of vitrinite, inertinite, and bituminite. The mean

vitrinite reflectance ( $R_o$ ) measured in TSU-3 is 0.9 ( $n = 25$ ), TSU-4 is 0.39 ( $n = 34$ ) and TSU-5 is 1.51 ( $n = 5$ ) (Barker and Pawlewicz 1994) indicates temperatures of 128°C, 62°C, and 169°C, respectively.

### V.6. Compaction Features and Porosity

Primary intragranular porosity in bioclasts was completely occluded by ferroan calcite cement. Primary intergranular porosity has been nearly completely destroyed in the siliciclastic sandstones and the hybrid arenites. In both rock types, physical and chemical compaction are the dominant processes causing porosity loss. Mechanical compaction is indicated by bending of mica grains and plastic deformation of ductile sedimentary and metasedimentary (slates and phyllites) as well as carbonate grains (Figures 15C, D). In the siliciclastic sandstones, chemical compaction is evidenced by intergranular straight, concavoconvex and sutured contacts that occur along the quartz–quartz and carbonate–carbonate grain contacts (Figure 15E).

Total intergranular volumes (*i.e.*, the sum of intergranular pore space and intergranular cement) of hybrid arenites are relatively low (10–20%; Table 1). Siliciclastic sandstones in TSU-2, however, have total intergranular volumes up to 47%. Minor secondary porosity (1–2%) occurs in the hybrid arenites and in the sandstones, formed by dissolution of coarsely crystalline, intergranular calcite cement and carbonate grains. Open fracture porosity was not observed. Fractures in the siliciclastic sandstones from TSU-2 and TSU-3 are completely filled by carbonate cement.

## VI. Discussion

### VI.1. Paragenetic Sequence

The petrographic data suggest that diagenetic alterations of the Hecho Group, which are interpreted to have been accomplished during eodiagenesis (<2 km depth) and mesodiagenesis (>2 km) (*sensu* Morad *et al.* 2000), vary significantly among the turbiditic hybrid arenites and the sandstones. Due to the lack of a detailed knowledge of the burial history of the succession, it is difficult to interpret the exact timing and burial depths or temperatures for all of the diagenetic processes and products. Nevertheless, an overall paragenetic sequence was established based on superposition and textural relationships of various diagenetic alterations and on the fluid-inclusion analyses (Figure 16). Eogenetic alterations in the hybrid arenites include: (i) precipitation of minor amounts of framboidal pyrite from marine pore waters within carbonate bioclasts, reflecting local reducing conditions (Raiswell 1997; Schieber 2002), (ii) precipitation of ferroan calcite cement in intragranular pores of bioclasts, (iii) cementation by intergranular poikilotopic ferroan calcite, and (iv) intense mechanical compaction favored by the presence of abundant ductile framework grains (primarily sedimentary, shale and siltstones, vitreous volcanic rock fragments, lowgrade metamorphic rock fragments, and carbonate intraclasts). Mesogenetic alterations include: (i) pressure dissolution (*i.e.*, chemical compaction) of the carbonate grains, (ii) cementation by intergranular blocky ferroan calcite, (iii) precipitation of dolomite overgrowths, and (iv) albitization of detrital feldspars and development of albite overgrowths. Eogenetic alterations in the siliciclastic sandstones include: (i) fibrous circumgranular calcite cement, (ii) minor amounts of framboidal pyrite from marine pore waters precipitating within the carbonate bioclasts, and (iii) cementation by intergranular poikilotopic ferroan calcite and dolomite cement. Mesogenetic alterations in the sandstones include: (i) intergranular pressure dissolution (*i.e.*, chemical compaction) of detrital quartz grains and concomitant formation of quartz overgrowths, (ii) cementation by intergranular blocky ferroan calcite, (iii) precipitation of dolomite overgrowths, (iv) albitization of detrital feldspars with development of albite overgrowths, and (v) formation of vein-filling calcite and scarce barite crystals in TSU-2. Dissolution of coarsely crystalline, intergranular calcite cement and carbonate grains giving secondary porosity occurs in the hybrid arenites and the sandstones. There are no pronounced differences in diagenetic evolution of the siliciclastic sandstones and hybrid arenites among the studied TSUs and various depositional facies (*e.g.*, channel, channel-to-



lobe transition, overbank, and sheetlike lobes; Figure 4A). Thus, variations in the diagenetic evolution pathways can be attributed mainly to variation in the detrital compositions, particularly the proportion and types of extrabasinal noncarbonate grains (feldspar and low-grade metamorphic rock fragments), extrabasinal carbonate grains, and intrabasinal carbonate grains (Figures 6, 17), which do not show any systematic facies control.

## **VI.2. Distribution and Conditions of Carbonate Cementation**

Cementation of the turbiditic hybrid arenites by carbonate was enhanced by the presence of abundant carbonate grains, which can act as nuclei for the precipitation and growth of carbonate cement (*cf.* South and Talbot 2000; Ketzer *et al.* 2002; Ketzer *et al.* 2003; El-Ghali *et al.* 2006).

Pressure dissolution of the carbonate grains rendered them sources of carbonate cement (Morad 1998). However, the common occurrence of fibrous circumgranular calcite (Figure 7A, B), which is commonly considered as typical marine cement (Tucker and Wright 1990), in arenites of TSU-2 and TSU-3 suggests that eogenetic calcite cement was also sourced by marine pore waters. Cementation by fibrous circumgranular calcite may have been promoted by diffusion of dissolved  $\text{Ca}^{2+}$  and  $\text{HCO}_3^-$  from the overlying seawater (Kantorowicz *et al.* 1987; Ketzer *et al.* 2003). Thus, cementation by fibrous calcite likely commenced near the seafloor (Kendall 1985; Tobin *et al.* 1996). Fibrous calcite in marine sediments has been interpreted to be derived from the neomorphism of aragonite and/or high-Mg calcite (Tucker 1986; Moore 1989). The high Sr content (up to 6000 ppm; Figure 8) of this calcite may support an aragonitic precursor (Tucker 1986; Moore 1989; Tucker and Wright 1990), whereas the relatively high amounts of Fe in these calcites suggest precipitation from suboxic to anoxic pore waters (Froelich *et al.* 1979). The reason behind limited amounts of fibrous calcite in TSU-4 and TSU-5 is unclear but could be caused by relatively short residence time of the sediments near the seafloor due to high sedimentation rates during deposition of these units (*cf.* Morad *et al.* 2000; Ketzer *et al.* 2003).

The  $\delta^{13}\text{C}_{\text{V-PDB}}$  values of fibrous calcite (+0.4‰ to +0.7‰) also suggest derivation of dissolved carbon from seawater or from the dissolution of detrital marine carbonate grains. However, the low oxygen isotope values of the calcite cements ( $\delta^{18}\text{O}_{\text{V-PDB}} \approx -9.7\text{‰}$ ) are indicative of formation at elevated temperatures or from meteoric water (Morad 1998). Assuming that these calcite cements, which commonly fill small pores in compacted sandstones, are derived from evolved basinal brines with  $\delta^{18}\text{O}_{\text{V-smow}}$  value of +2‰, the  $\delta^{18}\text{O}_{\text{V-PDB}}$  values of calcite would indicate precipitation temperatures of 55–90°C, whereas precipitation from meteoric waters with  $\delta^{18}\text{O}_{\text{V-smow}}$  value of -6‰ results in near-surface, eogenetic temperatures of 15–35°C. Nevertheless, the rapid loss of porosity and permeability of the arenites, which are rich in ductile grains (Nagtegaal 1978; Pittman and Larese 1991), particularly by mechanical compaction, probably precluded influx of considerable volumes of meteoric waters into the arenites. Hence, the fibrous calcite might have been recrystallized at elevated temperatures (Saigal and Bjorlykke 1987) and stretched by tectonic shear stresses.

Cementation of the arenites by intragranular ferroan calcite (Figure 8) probably occurred in the Mn–Fe reduction geochemical zone below the seafloor (Froelich *et al.* 1979). The intergranular patches of blocky to poikilotopic calcite cement are suggested to have been sourced by dissolution of carbonate grains and pressure dissolution of these components during progressive burial. The low and variable  $\delta^{18}\text{O}_{\text{V-PDB}}$  values of the intergranular calcite cement (-10.0‰ to -6.0‰) suggest precipitation at temperatures of 35–50°C if a pre-Quaternary marine water  $\delta^{18}\text{O}_{\text{V-smow}}$  value of -1.2‰ (Shackleton and Kennen 1975) is assumed. Higher temperatures (*ca.* 50–75°C) are obtained if precipitation is assumed to have occurred from evolved formation waters with  $\delta^{18}\text{O}_{\text{V-smow}}$  value of +2‰ (Morad 1998). The  $\delta^{13}\text{C}_{\text{V-PDB}}$  values (-1.4‰ to +0.4‰) are consistent with derivation of dissolved carbon from the dissolution of detrital marine carbonate grains.

Calculated precipitation temperatures for intergranular blocky calcite cement from fluid-inclusion analyses ( $\approx 80^\circ\text{C}$ ; Figure 17) and the high salinity (ranging from 17.9 to 20.2 wt % eq. NaCl) support an interpretation of precipitation from hot basinal fluids, probably sourced from the underlying Upper Triassic evaporitic deposits (Díaz Merino *et al.* 2006). Low oxygen isotope values ( $\delta^{18}\text{O}_{\text{VPDB}} = -10.4\text{‰}$  to  $-7.9\text{‰}$ ), high measured Th ( $\approx 150^\circ\text{C}$ ), and low salinities of vein calcite that crosscuts all other diagenetic carbonates suggest formation from hot meteoric waters (Bitzer *et al.* 2001; Ferket *et al.* 2004). Meteoric-water infiltration into these tight arenites is expected to have influenced only host rock in the vicinity of fractures, which were formed during uplift and deformation of the foreland basin (Spadafora *et al.* 1998). The orientation of the calcite crystal growth perpendicular to the vein walls (Figure 7C) indicates that meteoric-water flux and cementation occurred during extensional deformation of the sandstones (Travé *et al.* 1997; Bodego and Agirrezabala 2007). The occurrence of saddle-like calcite crystals may indicate a dolomite precursor, which is typical high-temperature carbonate cement formed at temperatures greater than  $70^\circ\text{C}$  (Spötl and Pitman 1998). The replacement of fracture-filling saddle dolomite is attributed to flux of hot meteoric waters (Zeeh *et al.* 2000; Marfil *et al.* 2005).

Petrographic evidence suggests the presence of two generations of dolomite cement, including early scattered dolomite crystals that precipitated around the framework grains (particularly around extrabasinal dolostone grains), followed by chemically zoned, syntaxial dolomite overgrowths. The grain-coating dolomite cement is interpreted to have been precipitated at or near to the seafloor from marine pore waters, and could have been sourced by the dissolution of high-Mg bioclasts and by the alteration of volcanic rock fragments (Morad 1998).

Formation of microcrystalline calcite and dolomite cements around the carbonate grains at shallow depths below the seafloor may be sourced by diffusion of  $\text{Mg}^{2+}$ ,  $\text{Ca}^{2+}$ , and  $\text{HCO}_3^-$  from the overlying seawater (Wilkinson 1989). The chemical zonation in dolomite overgrowths (Figure 8) presumably mimics variations in the concentrations of dissolved Fe and Mn in the pore waters, which might reflect changes in pore-water chemistry owing to mixing zones, Eh fluctuations in the reactant fluid, or variations in the supply of Fe and Mn ions, possibly from terrestrial input (Hendry *et al.* 2000).

The  $\delta^{13}\text{C}_{\text{V-PDB}}$  values of bulk dolomite ( $-1.2\text{‰}$  to  $+0.7\text{‰}$ ) suggest derivation of dissolved carbon from marine pore waters and/or from dissolution of marine carbonate grains. Assuming precipitation from marine pore waters, the narrow range of low oxygen isotope values in dolomite cement ( $\delta^{18}\text{O}$  from  $-8\text{‰}$  to  $-6\text{‰}$ ) would indicate precipitation at elevated temperatures. Using the fractionation equation of Land (1983), precipitation temperatures of  $60\text{--}75^\circ\text{C}$  are obtained with a pre-Quaternary marine water  $\delta^{18}\text{O}_{\text{v-smow}}$  value of  $-1.2\text{‰}$  (Shackleton and Kenneth 1975). However, higher temperatures (*ca.*  $75\text{--}100^\circ\text{C}$ ) are obtained if precipitation occurred from evolved marine pore waters with  $\delta^{18}\text{O}_{\text{v-smow}}$  value of  $+2\text{‰}$ . The lack of correlation between  $\delta^{18}\text{O}$  and  $\delta^{13}\text{C}$  values (Figure 11) may be the result of derivation of dissolved carbon from dissolution of detrital carbonate grains in the host sediments, independently of the variation in temperature, and hence in  $\delta^{18}\text{O}$  values.

Variation in the amount of cementation was controlled not only by the amounts of detrital carbonate grains but also by the residence time of the sediments near the seafloor (*i.e.*, sedimentation rates; Wilkinson 1989; Morad *et al.* 2000).

Dolomite cement similar to that in the arenites is present in the condensed sections within the lowstand wedges of depositional sequences in the Eocene Hecho Group (Marfil *et al.* in press). Textural relationships and chemical composition suggest an early diagenetic origin for microcrystalline dolomite, which could be similar to the grain-coating dolomite reported in this paper. In the condensed episodes (dolomite in yellow beds, Figure 11), the dolomite overgrowths show  $\delta^{18}\text{O}$  values comparable to detrital dolomites and overgrowths of the turbidite arenites (from  $-8.5$  to  $-6.3\text{‰}$   $\delta^{18}\text{O}$ , Table 4), which could indicate that cementation

by dolomite continued during deeper burial (Hendry *et al.* 2000; Aqrabi *et al.* 2006; Machent *et al.* 2007).

### VI.3. Origin and Conditions of Albitization

Albite can be of detrital or diagenetic origin. The petrographic evidence from this succession suggests that albite in the sandstones and the hybrid arenites was formed by the replacement (*i.e.*, albitization) of detrital plagioclase and K-feldspars. Diagenetic albitization in sandstones is controlled by temperature, chemistry of formation water, and reaction kinetics (Boles 1982; Aagaard *et al.* 1990; Morad *et al.* 1990). Albitization is also a common feature of hydrothermally altered granitic source rocks (Varlamoff 1972). Evidence of diagenetic albitization in these sandstones include: (i) absence of sericite and epidote, which typically occur in hydrothermally albitized feldspars (Zurcher *et al.* 2005), (ii) occurrence of both of grain-replacive albite and euhedral albite overgrowths (Figures 13A,B), indicating that the overall geochemical conditions were suitable for albite formation in the arenites, (iii) nearly pure chemical composition of the replacive albite and of albite overgrowths (Morad 1986; Saigal *et al.* 1988), and (iv) lack of luminescence of the albite overgrowths and albitized grains (Figure 13C–F; Kastner and Siever 1979; Saigal *et al.* 1988; Morad *et al.* 1990). The presence of barite within altered feldspars (*e.g.*, in TSU-3) may be the result of derivation of barium from albitization of Kfeldspar (Ali and Turner 1982; Long and Luth 1986; Kastner and Siever 1979).  $Al^{3+}$  and  $Ca^{2+}$ , by-products of plagioclase albitization, may be precipitated in carbonates relatively easily under the  $pCO_2$  levels present in most basins (Boles 1982; Morad *et al.* 1990), consistent with the presence of abundant calcite cement in the siliciclastic sandstones and in the hybrid arenites.

### VI.4. Evolution of Reservoir Quality

Scarce early diagenetic calcite and dolomite cements rendered the hybrid arenites and sandstones sensitive to mechanical compaction, which resulted in significant porosity destruction during eogenesis (*cf.* De Souza *et al.* 1995). The relatively low intergranular volume data (Table 1) reflect that the arenites suffered from significant compaction prior to cementation (*cf.* Paxton *et al.* 2002). The higher amounts of mechanically stable quartz grains in the sandstones resulted in less pervasive mechanical compaction, and thus preserved higher intergranular volume compared to the hybrid arenites (*cf.* Bloch *et al.* 2002). Porosity loss in the sandstones is interpreted to have occurred mainly by chemical compaction, *i.e.*, intergranular pressure dissolution along quartz–quartz grain boundaries, and by concomitant cementation by syntaxial quartz overgrowths (*cf.* Fontana *et al.* 1989). The presence of dominantly point contacts between grains engulfed by poikilotopic ferroan calcite cement suggests relatively early precipitation of this cement. The presence of various types of grain contacts (point, straight, and sutured) and various intergranular volumes within intergranular ferroan calcite cement suggest precipitation during progressive burial and concomitant mechanical and chemical compaction (Machent *et al.* 2007). Several authors have concluded that pressure dissolution of quartz grains is enhanced by a considerable increase in burial depth (*i.e.*, increase in effective stress), temperature, and time (>3 km, >90°C; Oelkers *et al.* 1996; Sheldon *et al.* 2003), whereas the onset of pressure dissolution of carbonate grains has been suggested to occur at burial depths less than *ca.* 1500 m (Buxton and Sibley 1981; Saller 1984). Carbonate pressure dissolution has acted as a source of burial carbonate cements in the studied rocks.

Secondary porosity is rare in the siliciclastic and hybrid arenites and has resulted mainly from the dissolution of coarsely crystalline, intergranular calcite cement and carbonate grains. Dissolution of calcite cement and pressure dissolution of carbonate grains indicate that the diagenetic evolution of these deposits has involved considerable cement redistribution (Dutton and Barton 2001). The extremely low porosity and permeability of sandstones and hybrid arenites from this foreland basin (Ketzer and Morad 2006) make them suitable only for gas rather than oil reservoirs. However, porosity and permeability in such reservoirs can be generated by tectonic fracturing (Camara *et al.* 1988; Díaz Merino *et al.* 2006).

This study thus reveals that the diagenetic evolution of turbiditic arenites of foreland basins follow various diagenetic evolution pathways, which can induce considerable variation in the spatial and temporal distribution of reservoir quality and heterogeneity. Sandstones rich in mechanically stable quartz grains have been subjected to slower rates of porosity loss than arenites rich in ductile extrabasinal and intrabasinal carbonate grains (Bloch *et al.* 2002; Paxton *et al.* 2002). Moreover, these carbonate grains act as sites for nucleation and growth of carbonate cement, and hence contribute to the greater rates of porosity loss than the quartz-rich sandstones (Buxton and Sibley 1981; Saller 1984).

## VII. Conclusions

Petrological and geochemical study of marine foreland basin turbiditic hybrid arenites and sandstones of the Hecho Group (Eocene), southcentral Pyrenees, Spain, reveals that diagenetic evolution pathways are closely linked to the variation in detrital composition, particularly the proportions and types of extrabasinal noncarbonates, extrabasinal carbonates, and intrabasinal carbonate grains. Important results include:

- ❖ Marine turbiditic hybrid arenites are subjected to more rapid and extensive porosity loss owing to more compaction and cementation in these than in siliciclastic sandstones in the same succession. Total elimination of reservoir quality makes the hybrid arenites and sandstones suitable only as tight gas reservoirs dominated by microporosity.
- ❖ Hybrid arenites are cemented extensively by mesogenetic carbonates (calcite, dolomite, and trace amounts of siderite). The low  $\delta^{18}\text{O}$  values of the intergranular calcite cement (-10.0‰ to -5.8‰) coupled with the high salinity (mode = 18.8 wt % eq. NaCl) and  $T_h$  (mode = 80°C) of fluid inclusions suggest involvement of basinal saline fluids sourced from the underlying Upper Triassic evaporitic deposits. The low  $\delta^{18}\text{O}_{\text{V-PDB}}$  values of the Fe-dolomite ( $\delta^{18}\text{O} = -8.5‰$  to  $-6.3‰$ ) suggest continuous precipitation during progressive burial and increasing temperatures, sourced mainly from pressure dissolution of intrabasinal and extrabasinal carbonate grains.
- ❖ The siliciclastic sandstones in the deepest tectonostratigraphic unit are characterized by the dominance of quartz grains, which prevented substantial porosity loss by mechanical compaction. Mesogenetic processes affecting the reservoir quality included quartz cementation, calcite and dolomite cementation, and chemical compaction (*i.e.*, intergranular pressure dissolution of quartz grains). The well-lithified sandstones were brittle, favoring the development of fracture porosity and permeability during tectonic deformation.
- ❖ Diagenetic alterations common to hybrid arenites and siliciclastic sandstones, such as pyrite precipitation, intragranular calcite cementation, and albitization, which are not extensive, had no effect on reservoir quality.
- ❖ The formation of vein saddle calcite with  $\delta^{18}\text{O}_{\text{V-PDB}}$  values from -10.4‰ to -7.8‰ and  $\delta^{13}\text{C}_{\text{V-PDB}}$  from -1.8‰ to -1.4‰, with  $T_h$  temperatures of  $\approx 150^\circ\text{C}$ , is attributed to deep circulation of hot meteoric waters during fracturing associated with the extensional stage of tectonism in the foreland basin.
- ❖ These results illustrate that proper understanding of the spatial and temporal distribution of reservoir-quality evolution in marine turbiditic arenite successions should be based on an integrated approach that links, primarily, diagenesis to variations in composition of primary framework grains. The diagenetic evolution pathways likely are not unique to this succession, and may thus provide insights into patterns of diagenesis in other foreland-basin successions.

## Acknowledgments

This work was accomplished within the framework of the EUROMARGIN project (01-LEC-EMA10F), which was launched by the European Science Foundation and funded by the research councils of Spain, France, Italy, Norway, and Sweden. M.A. Caja and R. Marfil thank the CCG07-UCM/AMB-2299 and CGL2006-01861 projects for partial financial support. Special thanks go to A. Permanyer for his help with vitrinite reflectance analyses. We are also very grateful for the assistance with thin-section preparation to M. Barajas and J. Estupiñan. Thanks go also to A. Fernández-Larios for his help with the electron microprobe analyses. This paper benefited significantly from comments made by JSR Editor, G. Rankey, and Associate Editors R. Worden and L.F. De Ros, and reviewers J. Gérard, D. Fontana, S. Patxon, and an anonymous reviewer.

## References

- AAGAARD, P., BJØRLYKKE, K., EGEBERG, P.K., SAIGAL, G.C., AND MORAD, S., 1990, Diagenetic albitization of detrital K-feldspars in Jurassic, Lower Cretaceous, and Tertiary clastic reservoir rocks from offshore Norway, II. Formation water chemistry and kinetic considerations: *Journal of Sedimentary Petrology*, v. 60, p. 575–581.
- AL-AASM, I.S., TAYLOR, B.E., AND SOUTH, B., 1990, Stable isotope analysis of multiple carbonate samples using selective acid extraction: *Chemical Geology*, v. 80, p. 119–125.
- ALI, A.D., AND TURNER, P., 1982, Authigenic K-feldspar in the Bromsgrove Sandstone Formation (Triassic) of Central England: *Journal of Sedimentary Petrology*, v. 52, p. 187–197.
- AQRAWI, A.A.M., KERAMATI, M., EHRENBERG, S., PICKARD, N., MOALLEMI, A., SVANA, T., DARKE, G., DICKSON, J.A.D., AND OXTOBY, N.H., 2006, The origin of dolomite in the Asmari Formation (Oligocene–lower Miocene), Dezful embayment, SW Iran: *Journal of Petroleum Geology*, v. 29, p. 381–402.
- BAKKE, K., GJELBERG, J., AND AGERLIN, S., 2008, Compound seismic modelling of the Ainsa II turbidite system, Spain: application to deep-water channel systems offshore Angola: *Marine and Petroleum Geology*, v. 25, p. 1050–1085, DOI: 10.1016/j.marpetgeo.2007.10.009.
- BARKER, C.E., AND PAWLEWICZ, M.J., 1994, Calculation of vitrinite reflectance from thermal histories and peak temperatures, *in* Mukhopadhyay, P.K., and Dow, W.G., eds., *Vitrinite Reflectance as a Maturity Parameter: Applications and Limitations*, American Chemical Society, Symposium Series, no. 570, p. 216–229.
- BITZER, K., TRAVÉ, A., AND CARMONA, J.M., 2001, Fluid flow processes at basin scale: *Acta Geologica Hispanica*, v. 36, p. 1–20.
- BLOCH, S., 1994, Effect of detrital mineral composition on reservoir quality, *in* Wilson, M.D., ed., *Reservoir Quality Assessment and Prediction in Clastic Rocks*, SEPM, Short Course Notes 30, p. 161–182.
- BLOCH, S., LANDER, R.H., AND BONNELL, L., 2002, Anomalously high porosity and permeability in deeply buried sandstone reservoirs: origin and predictability: *American Association of Petroleum Geologists, Bulletin*, v. 86, p. 301–328.
- BODEGO, A., AND AGIRREZABALA, L.M., 2007, Albian sediment-filled fissures on an Urganian carbonate platform as kinematic indicators of extension, Westernmost Pyrennes: *Geogaceta*, v. 41, p. 27–34.
- BOLES, J.R., 1982, Active albitization of plagioclase, Gulf Coast Tertiary: *American Journal of Science*, v. 282, p. 165–180.
- BUXTON, T.M., AND SIBLEY, D.F., 1981, Pressure solution features in a shallow buried limestone: *Journal of Sedimentary Petrology*, v. 51, p. 19–26.
- CAJA, M.A., MARFIL, R., GARCIA, D., REMACHA, E., MANSURBEG, H., MORAD, S., AND AMOROSI, A., 2007, Provenance and reservoir quality of carbonate-rich turbiditic arenites from the Hecho Group, South Central Pyrennes, Spain: General Assembly of the

- European Geosciences Union (EGU), Vienna, Austria: Geophysical Research Abstracts, v. 9, 01738 p.
- CAMARA, P., RODRÍGUEZ DE PEDRO MORENO, J., AND MORENO, J.M., 1988, Serrablo gas field: An example of trap in syntectonic brecciated reservoir, Pyrenees (Spain) (abstract): American Association of Petroleum Geologists, Bulletin, v. 72, 993 p.
- DE ROS, L.F., AND GOLDBERG, K., 2007, Reservoir petrofacies: a tool for quality characterization prediction: American Association of Petroleum Geologists, Annual Convention and Exhibition, Long Beach, CA, p. 1–6.
- DE SOUZA, R.S., DE ROS, L.F., AND MORAD, S., 1995, Dolomite diagenesis and porosity preservation in lithic reservoirs: Carmópolis Member, Sergipe–Alagoas Basin, northeastern Brazil: American Association of Petroleum Geologists, Bulletin, v. 79, p. 725–748.
- DÍAZ MERINO, C., VICENTE BRAVO, J.C., VILLALBOS, L., LEÓN, L., CÁMARA, P., AND MARTÍNEZ DEL OLMO, W., 2006, The Serrablo field, a commercial gas discovery in the Jaca basin (southern Pyrenees, Spain), *in* Martínez del Olmo, W., ed., XXV Aniversario Asociación de Geólogos y Geofísicos Españoles del Petróleo, p. 131–146.
- DICKINSON, W.R., 1984, Interpreting provenance relations from detrital modes of sandstones, *in* Zuffa, G.G., ed., Provenance of Arenites, NATO Advanced Science Institutes, Series C 148, p. 333–361.
- DICKINSON, W.R., AND SUCZEK, C.A., 1979, Plate tectonics and sandstone compositions: American Association of Petroleum Geologists, Bulletin, v. 63, p. 2164–2182.
- DICKINSON, W.R., AND VALLONI, R., 1980, Plate settings and provenance of sands in modern ocean basins: *Geology*, v. 8, p. 82–86.
- DICKINSON, W.R., BEARD, S.L., BRAKENRIDGE, G.R., ERJAVEC, J.L., FERGUSON, R.C., INMAN, K.F., KNEPP, R.A., LINDBERG, F.A., AND RYBERG, P.T., 1983, Provenance of North American sandstones in relation to tectonic setting: *Geological Society of America, Bulletin*, v. 94, p. 222–235.
- DOS ANJOS, S.M.C., DE ROS, L.F., SCHIFFER DE SOUZA, R., ASSIS SILVA, C.M., AND SOMBRA, C.L., 2000, Depositional and diagenetic controls on the reservoir quality of Lower Cretaceous Penedencia sandstones, Potiguar rift basin, Brazil: American Association of Petroleum Geologists, Bulletin, v. 84, p. 1719–1742.
- DUTTON, S.P., 2008, Calcite cement in Permian deep-water sandstones, Delaware Basin, West Texas: Origin, distribution, and effect on reservoir properties: American Association of Petroleum Geologists, Bulletin, v. 92, p. 765–787.
- DUTTON, S.P., AND BARTON, M.D., 2001, Diagenesis and reservoir quality of turbidite sandstones in the Bell Canyon Formation, Delaware Basin, Texas: *Geological Society of America, Abstracts with Programs*, v. 33, p. 36–37.
- EL-GHALI, M., MORAD, S., AL-AASM, I.S., AND RAMSEYER, K., 2006, Distributions of diagenetic alterations in glaciogenic sandstones within depositional facies and sequence stratigraphic framework: evidence from Upper Ordovician of the Murzuq Basin, SW Libya: *Sedimentary Geology*, v. 190, p. 323–351.
- FALIVENE, O., CABRERA, L., MUÑOZ, J.A., ARBUÉS, P., FERNÁNDEZ, O., AND SÁEZ, A., 2007, Statistical grid-based facies reconstruction and modelling for sedimentary bodies. Alluvial–palustrine and turbiditic examples: *Geologica Acta*, v. 5, p. 199–230.
- FERKET, H., SWENNEN, R., ORTUÑO-ARZATE, S., CACAS, M.C., AND ROURE, F., 2004, Vein formation in Cretaceous carbonates in the Laramide foreland fold and thrust belt of eastern Mexico, *in* Swennen, R., Roure, F., and Granath, J.W., eds., Deformation, fluid flow, and reservoir appraisal in foreland fold and thrust belts, American Association of Petroleum Geologists, Hedberg Series, no. 1, p. 133–156.
- FONTANA, D., ZUFFA, G.G., AND GARZANTI, E., 1989, The interaction of eustasy and tectonism from provenance studies of the Eocene Hecho Group turbidite complex (South-Central Pyrenees, Spain): *Basin Research*, v. 2, p. 223–237.
- FROELICH, P.N., KLINKHAMMER, G.P., BENDER, M.L., LUEDTKE, N.A., HEATH, G.R., CULLEN, D., DAUPHIN, P., HAMMOND, D., HARTMAN, B., AND MAYNARD, V.,

- 1979, Early oxidation of organic matter in pelagic sediments of the eastern equatorial Atlantic: suboxic diagenesis: *Geochimica et Cosmochimica Acta*, v. 43, p. 1075–1090.
- GARCIA, D., CAJA, M.A., MARFIL, R., REMACHA, E., MANSURBEG, H., MORAD, S., AND AMOROSI, A., 2007, K-feldspar albization in the Hecho Group turbidites (southcentral Pyrenean Basin, Spain) and fluid–rock exchange models: General Assembly of the European Geosciences Union (EGU), Vienna, Austria: Geophysical Research Abstracts, v. 9, 06007 p.
- HENDRY, J.P., WILKINSON, M., FALLICK, A.E., AND TREWIN, N.H., 2000, Disseminated “jigsaw piece” dolomite in Upper Jurassic shelf sandstones, Central North Sea: an example of cement growth during bioturbation?: *Sedimentology*, v. 47, p. 631–644.
- JONES, R.W., PICKERING, K.T., BOUDAGHER-FADEL, M., AND MATTHEWS, S., 2005, Preliminary observations on the micropalaeontological characterization of submarine fan/channel sub-environments, Aínsa System, south-central Pyrenees, Spain, *in* Powell, A.J., and Riding, J.B., eds., *Recent Developments in Applied Biostratigraphy*, The Micropalaeontological Society, Special Publication TMS001, p. 55–68.
- KANTOROWICZ, J.D., BRYANT, I.D., AND DAWANS, J.M., 1987, Controls on the geometry of carbonate cements in Jurassic sandstones: Bridport Sands, southern England and Viking Group, Troll Field, Norway, *in* Marshall, R., ed., *Diagenesis of Sedimentary Sequences*, Geological Society of London, Special Publication 36, p. 103–118.
- KASTNER, M., AND SIEVER, R., 1979, Low temperature feldspars in sedimentary rocks: *American Journal of Science*, v. 279, p. 435–479.
- KENDALL, A.C., 1985, Radial fibrous calcite: a reappraisal, *in* Schneidermann, N., and Harris, P.M., eds., *Carbonate Cements*, SEPM, Special Publication 35, p. 59–77.
- KETZER, J.M., AND MORAD, S., 2006, Predictive distribution of shallow marine, lowporosity (pseudomatrix-rich) sandstones in a sequence stratigraphic framework: example from the Ferron sandstone, Upper Cretaceous, USA: *Marine and Petroleum Geology*, v. 23, p. 29–36.
- KETZER, J.M., MORAD, S., EVANS, R., AND AL-AASM, I.S., 2002, Distribution of diagenetic alterations in fluvial, deltaic, and shallow marine sandstones within a sequence stratigraphic framework: evidence from the Mullaghmore Formation (Carboniferous), NW Ireland: *Journal of Sedimentary Research*, v. 72, p. 760–774.
- KETZER, J.M., MORAD, S., AND AMOROSI, A., 2003, Predictive diagenetic clay-mineral distribution in siliciclastic rocks within a sequence stratigraphic framework, *in* Worden, R.H., and Morad, S., eds., *Clay Mineral Cements in Sandstones*, International Association of Sedimentologists, Special Publication 34, p. 43–61.
- LABOURDETTE, R., CRUMEYROLLE, P., AND REMACHA, E., 2008, Characterisation of dynamic flow patterns in turbidite reservoirs using 3D outcrop analogues: Example of the Eocene Morillo turbidite system (South-central Pyrenees, Spain): *Marine and Petroleum Geology*, v. 25, p. 255–270, doi: 10.1016/j.marpetgeo.2007.07.003.
- LAND, L.S., 1983, The application of stable isotopes to studies of the origin of dolomite and to problems of diagenesis of clastic sediments, *in* Arthur, M.A., and Anderson, T.F., eds., *Stable Isotopes in Sedimentary Geology*, SEPM, Short Course 10, p.4.1–4.22.
- LAWTON, T.F., 1986, Compositional trends within a clastic wedge adjacent to a foldthrust belt: Indianola Group, central Utah, U.S.A, *in* Allen, P.A., and Homewood, P., eds., *Foreland Basins*, International Association of Sedimentologists, Special Publication 8, p. 411–423.
- LONG, P.E., AND LUTH, W.C., 1986, Origin of K-feldspar megacrystals in granitic rocks: Implications of a partitioning model for barium: *American Mineralogist*, v. 71, p.367–375.
- MACHENT, P.G., TAYLOR, K.G., MACQUAKER, J.H.S., AND MARSHALL, J.D., 2007, Patterns of early post-depositional and burial cementation in distal shallow-marine sandstones: Upper Cretaceous Kenilworth Member, Book Cliffs, Utah, USA: *Sedimentary Geology*, v. 198, p. 125–145.

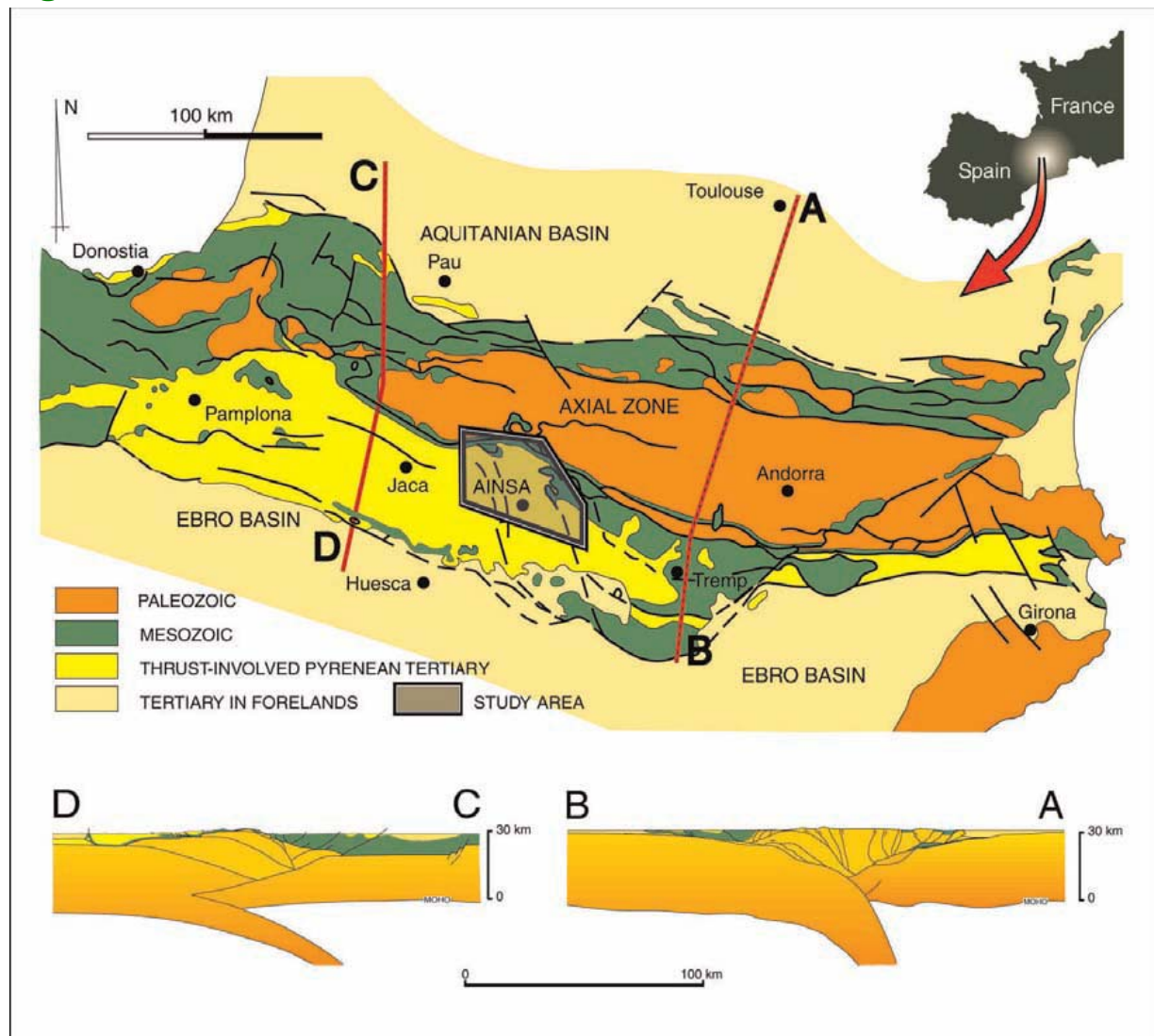
- MANSURBEG, H., 2007. Diagenesis and reservoir-quality evolution of deep-water turbidites: links to basin setting, depositional facies, and sequence stratigraphy [Unpublished Ph.D. Thesis]: Uppsala University, 58 p.
- MANSURBEG, H., MORAD, S., SALEM, A., MARFIL, R., EL-GHALI, M.A.K., NYSTUEN, J.P., CAJA, M.A., AMOROSI, A., GARCIA, D., AND LA IGLESIA, A., 2008, Diagenesis and reservoir quality evolution of Palaeocene deepwater, marine sandstones, the Shetland–Faroes Basin, the British continental shelf: *Marine and Petroleum Geology*, v. 25, p. 514–543, doi: 10.1016/j.marpetgeo.2007.07.012.
- MARFIL, R., CAJA, M.A., TSIGE, M., AL-AASM, I.S., MARTI´N-CRESPO, T., AND SALAS, R., 2005, Carbonate-cemented stylolites and fractures in the Eastern Iberian Range, Spain: A record of palaeofluids composition and thermal history: *Sedimentary Geology*, v. 178, p. 237–257.
- MARFIL, R., MANSURBEG, H., GARCIA, D., CAJA, M.A., REMACHA, E., MORAD, S., AND AMOROSI, A., in press, Dolomite-rich condensed sections in the overbank of turbidite channels, Eocene Hecho Group (South-central Pyrenees, Spain), *in* Morad, S., and Ketzer, M., eds., *Linking Diagenesis and Sequence Stratigraphy*, International Association of Sedimentologists, Special Publication.
- MOORE, C.H., 1989. Carbonate diagenesis and porosity: Amsterdam, Elsevier, *Developments in Sedimentology*, no. 46. Elsevier, 338 p.
- MORAD, S., 1986, Albitization of K-feldspar grains in Proterozoic arkoses and greywackes from southern Sweden: *Neues Jahrbuch für Mineralogie*, v. 4, p. 145–156.
- MORAD, S., 1998, Carbonate cementation in sandstones: distribution patterns and geochemical evolution, *in* Morad, S., ed., *Carbonate cementation in sandstones*, International Association of Sedimentologists, Special Publication 26, p. 1–26.
- MORAD, S., BERGEN, M., KNARUD, R., AND NYSTUEN, J.P., 1990, Albitization of detrital plagioclase in Triassic reservoir sandstones from the Snorre field, Norwegian North Sea: *Journal of Sedimentary Petrology*, v. 60, p. 411–425.
- MORAD, S., KETZER, J.M., AND DE ROS, L.F., 2000, Spatial and temporal distribution of diagenetic alterations in siliciclastic rocks: implications for mass transfer in sedimentary basins: *Sedimentology*, v. 47, p. 95–120.
- MUÑOZ, J.A., 1992, Evolution of a continental collision belt: ECORS-Pyrenees crustal balanced cross section, *in* McClay, K.R., ed., *Thrust Tectonics*: London, Chapman & Hall, p. 235–246.
- MUTTI, E., LUTERBACHER, H.P., FERRER, J., AND ROSELL, J., 1972, Schema stratigrafico e lineamenti di facies del Paleogene marino della zona centrale sudpirenaica tra Tremp (Catalogna) e Pamplona (Navarra): *Societa Geologica Italiana, Memorie* 11, p. 391–416.
- MUTTI, E., REMACHA, E., SGAVETTI, M., ROSELL, J., VALLONI, R., AND ZAMORANO, M., 1985a, Stratigraphy and facies characteristics of the Eocene Hecho Group turbidite systems, south-central Pyrenees, *in* Mila, M.D., and Rosell, J., eds., *Excursion Guidebook of the 6th European Regional Meeting*, International Association of Sedimentologists, Lleida, Spain, p. 519–576.
- MUTTI, E., SEGURES, M., AND SGAVETTI, M., 1988, Sedimentation and deformation in the Tertiary sequences of the southern Pyrenees: Field trip 7 guidebook, American Association of Petroleum Geologists, Mediterranean Basin Conference, Nice, France: Special Publication of the Institute of Geology of the University of Parma, 157 p.
- MUTTI, E., TINTERRI, R., REMACHA, E., MAVILLA, N., ANGELLA, S., AND FAVA, L., 1985b, An introduction to the analysis of ancient turbidite basins from an outcrop perspective: American Association of Petroleum Geologists, Continuing Education Course Notes Series 39, 61 p.
- NAGTEGAAL, P.J.C., 1978, Sandstone framework instability as a function of burial diagenesis: *Geology Society of London, Journal*, v. 135, p. 101–106.



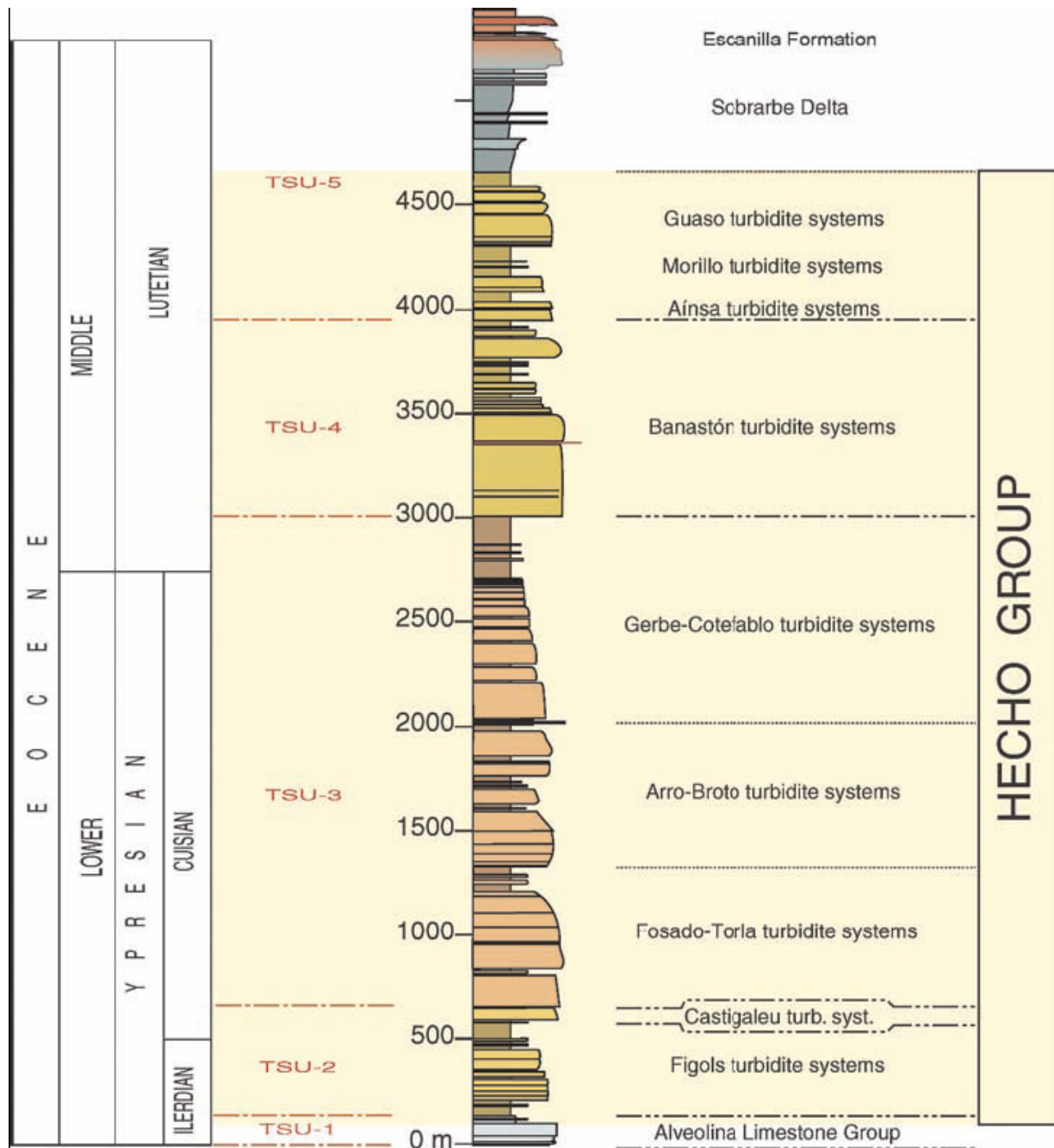
- OELKERS, E.H., BJØRKUM, P.A., AND MURPHY, W.M., 1996, A petrographic and computational investigation of quartz cementation and porosity reduction in North Sea sandstones: *American Journal of Science*, v. 206, p. 420–452.
- PAXTON, S.T., SZABO, J.O., AJDUKIEWICZ, J.M., AND KLIMENTIDIS, R.E., 2002, Construction of an intergranular volume compaction curve for evaluating and predicting compaction and porosity loss in rigid-grain sandstone reservoirs: *American Association of Petroleum Geologists, Bulletin*, v. 86, p. 2047–2067.
- PETTIJOHN, F.J., POTTER, P.E., AND SIEVER, R., 1972. *Sand and Sandstone*: Berlin, Springer-Verlag, 617 p.
- PITTMAN, E.D., AND LARESE, R.E., 1991, Compaction of lithic sands: experimental results and applications: *American Association of Petroleum Geologists, Bulletin*, v. 75, p. 1279–1299.
- RAISWELL, R., 1997, A geochemical framework for the application of stable sulphur isotopes to fossil pyritization: *Geological Society of London, Journal*, v. 154, p.343–356.
- REMACHA, E., OMS, O., AND COELLO, J., 1995, The Rapitán turbidite channel and its related eastern levee–ovebank deposits, Eocene Hecho group, south-central Pyrenees, Spain, *in* Pickering, K.T., Hiscott, R.N., Kenyon, N.H., Ricci Lucchi, F., and Smith, R.D.A., eds., *Atlas of Deep Water Environments: Architectural Style in Turbidite Systems*: London, Chapman & Hall, p. 145–149.
- REMACHA, E., GUAL, G., BOLAÑO, F., ARCURI, M., OMS, O., CLIMENT, F., CRUMEYROLLE, P., FERNÁNDEZ, L.P., VICENTE, J.C., AND SUÁREZ, J., 2003, Sand-rich turbidite systems of the Hecho Group from slope to the basin plain: facies, stacking patterns, controlling factors and diagnostic features: *American Association of Petroleum Geologists, International Conference and Exhibition, Barcelona, Spain, September 21–24. Geological Field Trip no. 12, South-Central Pyrenees*.
- REMACHA, E., FERNÁNDEZ, L.P., AND MAESTRO, E., 2005, The transition between sheetlike lobes and basin plain turbidites in the Hecho Group (South-central Pyrenees, Spain): *Journal of Sedimentary Research*, v. 75, p. 798–819.
- SAIGAL, G.C., AND BJØRLYKKE, K., 1987, Carbonate cements in clastic reservoir rocks from offshore Norway—relationships between isotopic composition, textural development and burial depth, *in* Marshall, J.D., ed., *Diagenesis of Sedimentary Sequences*, Geological Society of London, Special Publication 36, p. 313–324.
- SAIGAL, G.C., MORAD, S., BJØRLYKKE, K., EGEBERG, P.K., AND AAGAARD, P., 1988, Diagenetic albitization of detrital K-feldspar in Jurassic, Lower Cretaceous, and Tertiary clastic reservoir rocks from offshore Norway, I. Textures and origin: *Journal of Sedimentary Petrology*, v. 58, p. 1003–1013.
- SALLER, A.H., 1984, Petrologic and geochemical constraints on the origin of subsurface dolomite, Enewetok Atoll: An example of dolomitization by normal seawater: *Geology*, v. 12, p. 217–220.
- SCHIEBER, J., 2002, Sedimentary pyrite: A window into the microbial past: *Geology*, v. 30, p. 531–534.
- SCHOLLE, P.A., 1971, Diagenesis of deep-water carbonate turbidites, Upper Cretaceous Monte Antola flysch, Northern Apennines, Italy: *Journal of Sedimentary Petrology*, v. 41, p. 233–250.
- SCHWAB, F.L., 1986, Sedimentary “signature” of foreland basin assemblage: real or counterfeit?, *in* Allen, P.A., and Homewood, P., eds., *Foreland Basins*, International Association of Sedimentologists, Special Publication 8, p. 395–410.
- SHACKLETON, N.J., AND KENNETH, D.J., 1975, Paleotemperature history of the Cenozoic and initiation of Antarctic glaciation: oxygen and carbon isotope analyses in DSDP sites 277, 279 and 289: *Deep Sea Drilling Project, Interim Report 29*, p. 743–755.
- SHELDON, H.A., WHEELER, J., WORDEN, R.H., AND CHEADLE, M.J., 2003, Analysis of the roles of stress, temperature, and pH in chemical compaction of sandstones: *Journal of Sedimentary Research*, v. 73, p. 64–71.

- SOTO, R., AND CASAS, A.M., 2001, Geometría y cinemática de las estructuras Norte–Sur de la Cuenca de Aínsa: Sociedad Geológica de España, Revista, v. 14, p. 199–211.
- SOUTH, D.L., AND TALBOT, M.R., 2000, The sequence stratigraphic framework of carbonate diagenesis within transgressive fan-delta deposits: Sant Llorenç, del Munt fan-delta complex, SE Ebro Basin, NE Spain: *Sedimentary Geology*, v. 138, p. 179–198.
- SPADAFORA, E., DE ROS, L.F., ZUFFA, G.G., MORAD, S., AND AL-AASM, I.S., 1998, Diagenetic evolution of synorogenic hybrid and lithic arenites (Miocene), northern Apennines, Italy, *in* Morad, S., ed., Carbonate Cementation in Sandstones, International Association of Sedimentologists, Special Publication 26, p. 241–260.
- SPÖTL, C., AND PITTMAN, J.K., 1998, Saddle (baroque) dolomite in carbonates and sandstones: a reappraisal of a burial-diagenetic concept, *in* Morad, S., ed., Carbonate Cementation in Sandstones, International Association of Sedimentologists, Special Publication 26, p. 437–460.
- TEIXELL, A., 1998, Crustal structure and orogenic material budget in the west central Pyrenees: *Tectonics*, v. 13, p. 395–406.
- TOBIN, K.J., WALKER, K.R., STEINHAUFF, D.M., AND MORA, C.I., 1996, Fibrous calcite from the Ordovician of Tennessee: preservation of marine oxygen isotopic composition and its implications: *Sedimentology*, v. 43, p. 235–251.
- TRAVÉ, A., LABAUME, P., CALVET, F., AND SOLER, A., 1997, Sediment dewatering and pore fluid migration along thrust faults in a foreland basin inferred from isotopic and elemental geochemical analyses (Eocene southern Pyrenees, Spain): *Tectonophysics*, v. 282, p. 375–398.
- TUCKER, M.E., 1986, Formerly aragonitic limestones associated with tillites in the Late Proterozoic of Death Valley, California: *Journal of Sedimentary Petrology*, v. 56, p. 818–830.
- TUCKER, M.E., AND WRIGHT, P., 1990. Carbonate sedimentology: London, Blackwell Scientific Publications, 482 p.
- VARLAMOFF, N., 1972, Central and West African rare-metal granitic pegmatites, related aplites, quartz veins and mineral deposits: *Mineralium Deposita*, v. 7, p. 202–216.
- VILASI, N., SWENNEN, R., AND ROURE, F., 2006, Diagenesis and fracturing of Paleocene–Eocene carbonate turbidite systems in the Ionian Basin: The example of the Kelçyra area (Albania): *Journal of Geochemical Exploration*, v. 89, p. 409–413.
- WILKINSON, M., 1989, Discussion: evidence for surface reaction-controlled growth of carbonate concretions in shales: *Sedimentology*, v. 36, p. 951–953.
- ZEEH, S., BECKER, H., AND HEGGEMANN, H., 2000, Dedolomitization by meteoric fluids: the Korbach fissure of the Hessian Zechstein basin, Germany: *Journal of Geochemical Exploration*, v. 69–70, p. 173–176.
- ZUFFA, G.G., 1980, Hybrid arenites: their composition and classification: *Journal of Sedimentary Petrology*, v. 50, p. 21–29.
- ZUFFA, G.G., 1985, Optical analysis of arenites: influence of methodology on compositional results, *in* Zuffa, G.G., ed., Provenance of Arenites, NATO ASI Series C, Reidel, Dordrecht, v. 148, p. 165–189.
- ZURCHER, L., LOUNEJEVA, E., AND KRING, D.A., 2005, Preliminary analysis of relative abundances of hydrothermal alteration products in the C1-N10, C1-N10, Y6-N19, AND YAX-1\_863.51 impact melt samples, Chicxulub structure, Mexico: Lunar and Planetary Science Conference XXXVI, Proceedings, p. 1–2.

## Figures



*Figure 1: Highly simplified geological map of the Pyrenees showing location of both the study area and the cross sections included below (A–B and C–D). The lithosphere-scale balanced cross sections show the main structural features of the central Pyrenees, a fan-shaped delaminated orogenic wedge overlying the lower crust, related to the subduction of the Iberian crust beneath the Eurasian plate. Cross section A–B (from Muñoz 1992) accounts for field data and interpretation of the ECORS Pyrenees seismic survey. Cross section C–D (from Teixell 1998) is based on field work data and interpretation of the ECORS–Arzak seismic survey following the Veral transect to the south (Ansó valley).*



*Figure 2: Composite stratigraphic column, mostly made along the Ara River valley, from Sierra Tendenera to Santa Maria del Buil, with chronostratigraphic reference for the TSUs and their component turbidite systems and nomenclature. The colors used in the different TSUs are subjective and do not have geological meaning.*

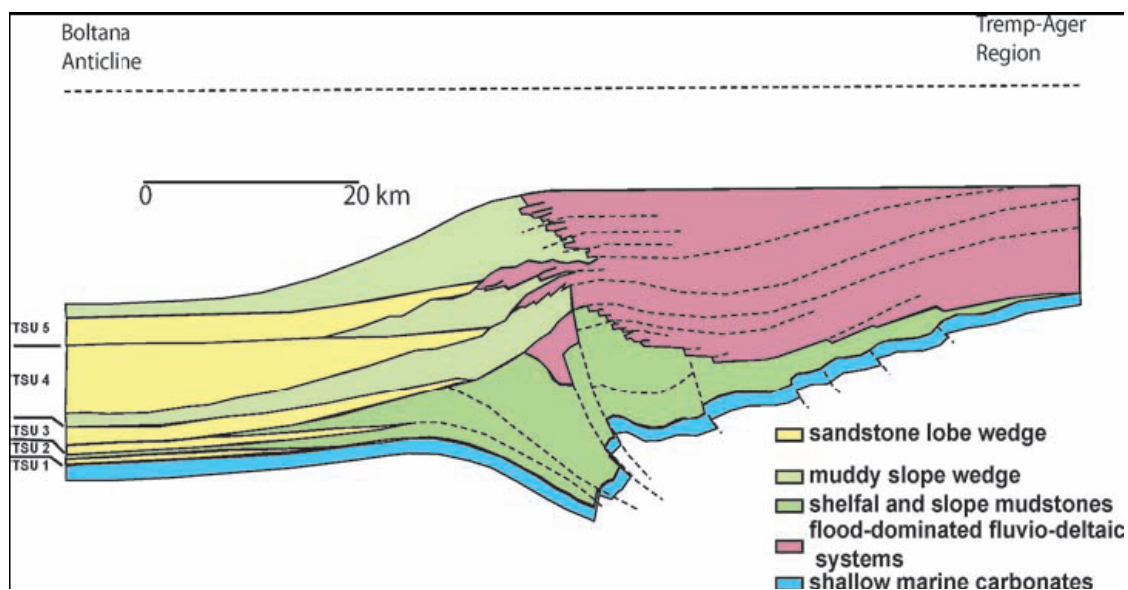


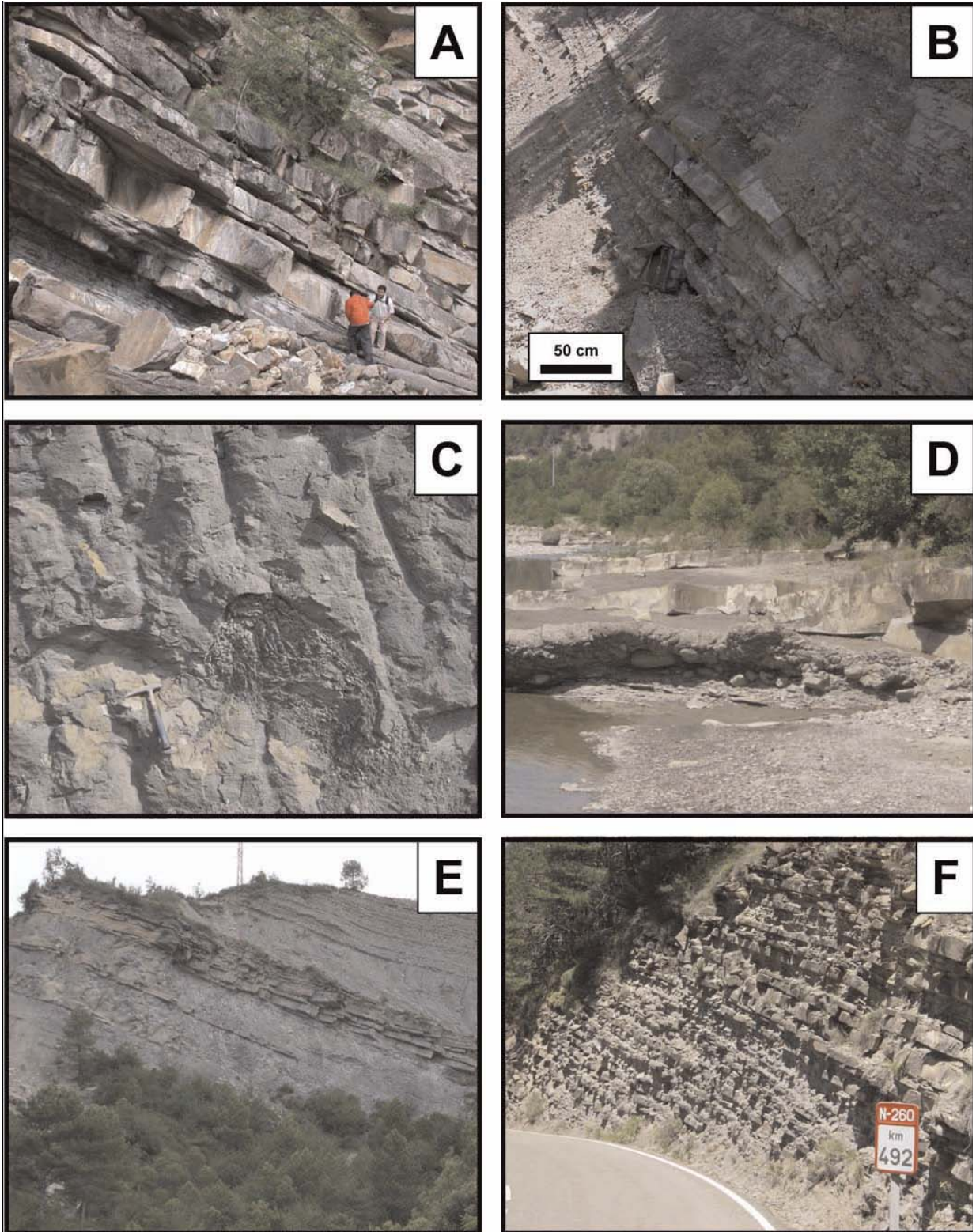
Figure 3: Schematic cross section of the eastern and central part of the Eocene foreland basin of the south-central Pyrenees, Spain. See Figure 1 for location of Boltaña and Tremp–Ager regions. The stratigraphic section consists of five major unconformity-bounded units (TSUs; redrawn from Mutti et al. 1985, Mutti et al. 1988).

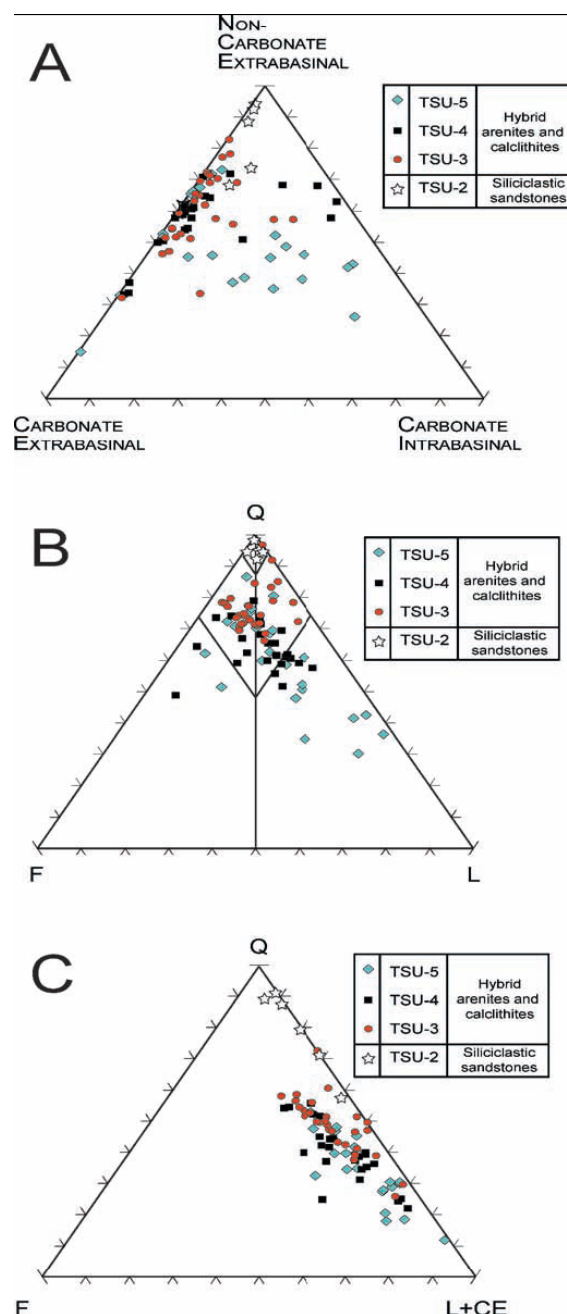
AGE	TURBIDITE SYSTEMS	FACIES	STUDIED SECTIONS	
			Section n°	Outcrop location
Eocene 40 Ma MIDDLE Lutetian 45 Ma EARLY Ypresian Cuisian 50 Ma 55 Ma	TSU-5	Guaso channel-overbank complexes	25	El Grado
			24	Río Ena
			23	Guaso
		Morillo high-sinuosity channel systems	22	Morillo de Tou
			21	Bco. Sieste
	Aínsa 2 channel-lobe transition	20	Bruello	
		19	North of Aínsa	
		18	Boltaña	
	TSU-4	Banastón 5 channel-lobe transition	17	Quarry
			16	Ctra. Campodarbe-Boltaña
		Banastón 4 channel	15	Ctra. Usana
			14	Ctra. Campodarbe-Boltaña
		Banastón 3 channel-lobe transition	13	San Vicente
			12	San Vicente road
		Banastón 2 channel overbank	11	Usana
	10		Labuerda	
	TSU-3	Banastón 1 & 2 channel-lobe transition	9	Bergua
			8	Bco. Costaroles
Gerbe / Cotefablo channel / sheet-like lobe		6 / 7	Rio Nata (Aínsa-Campo road) / Road to Biescas	
		5	Arro-Los Molinos road	
		4	Broto-Fanlo	
TSU-2	Castigaleu (Fanlo) apron system	3	Biescas-Cotefablo	
		2	Bco. Sorrosal (Viu)	
TSU-1	Fígols channel-lobe transition	1	Bco. Sorrosal (Viu)	
	TSU-1	Alveoline limestone		

Figure 4: Chronostratigraphic succession of the turbidite system within the Hecho Group, showing the various tectonosedimentary units, the facies, and the studied sections.

⇒

Figure 5: Examples and field appearance of sampled outcrops of the Hecho Group. **A)** TSU-2, and **B)** lower TSU-3 or Torla turbidite systems. Both outcrops are located in the Barranco del Sorrosal (west of the Boltaña anticline) and show strongly folded composite depositional sequences (third-order scale) with facies associations of sheetlike sandstone lobes (sandy stages of growth), transitionally overlain (to the left) by fine-grained and thin bedded mudstones (muddy stages of growth or slopedelta wedges). **C)** Overturned (top to the left) fining-upward high-frequency facies cycle (fourth-order scale) of the Broto sheet sandstone lobes, within TSU-3, exposed along the road trenches between Broto and the Cotefablo pass (NW of the study zone). **D)** Sheet sands of the channel-lobe transition facies of TSU-4 (Banastón turbidite systems) in the San Vicente zone, north of the Hecho Group outcrop belt, located east of the Boltaña anticline (Aínsa Basin). **E)** Outcrops of the Barranco Forcaz, north of Aínsa, showing the Aínsa-2 turbidite systems, which are located in the lower part of the TSU-5, and showing channel-lobe transition facies association. **F)** Sand-rich high-sinuosity channels of the Morillo turbidite systems, within TSU-5, in the Barranco Sieste.

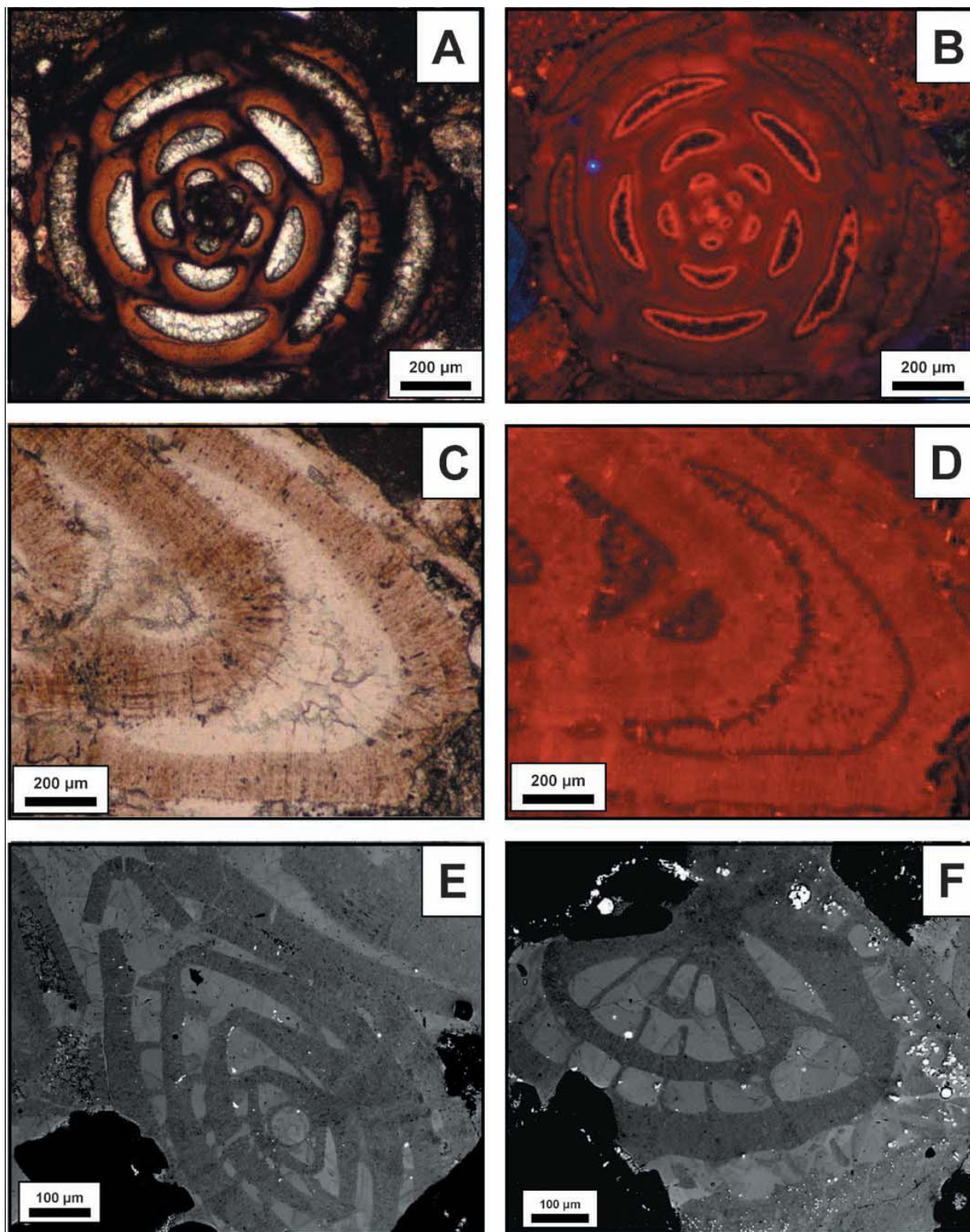




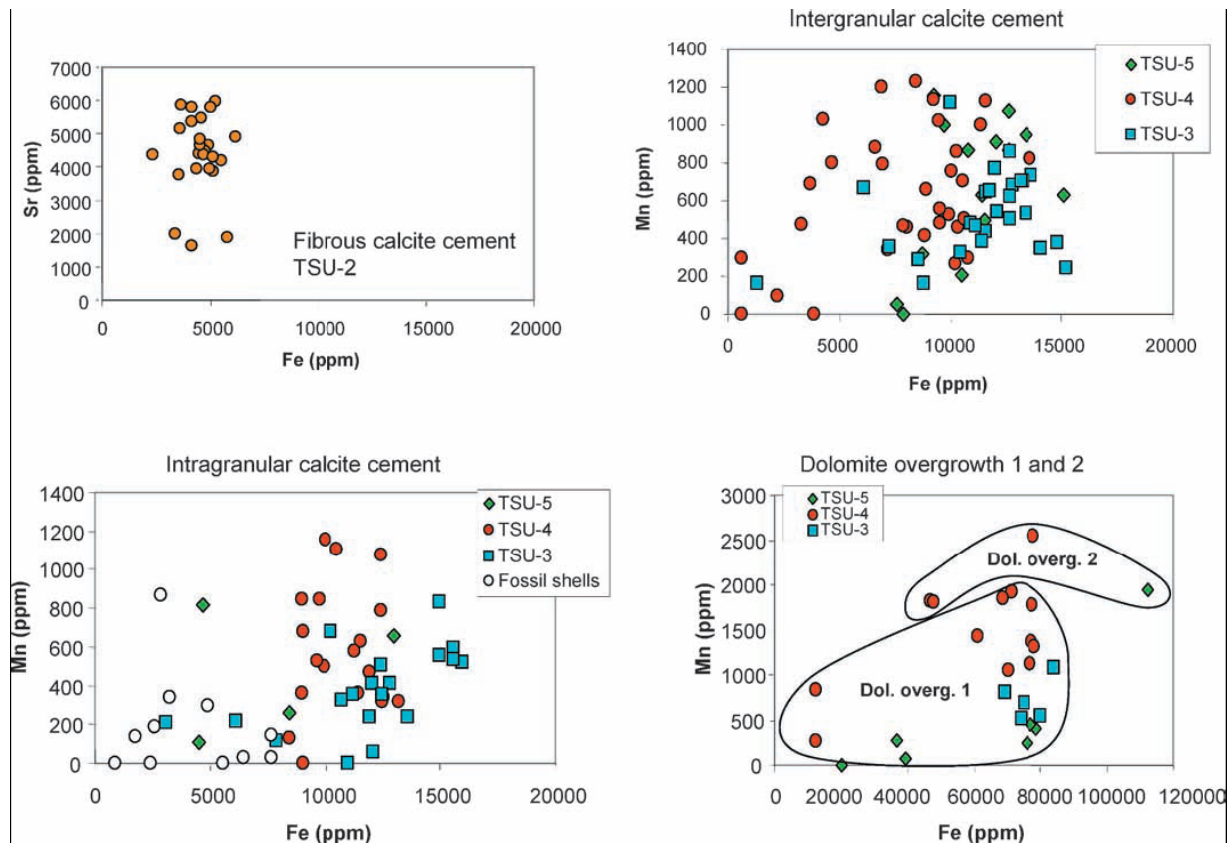
**Figure 6:** Compositional plots of the Hecho Group carbonate-rich arenites. Firstorder NCE-CE-CI classification (after Zuffa 1985), second-order, Q-F-L classification (after Pettijohn et al. 1972) and Q-F-L + CE classification. Note the increase in L + CE toward the TSU-5. The most characteristic facies of the studied units are: TSU-2, channel-lobe transition turbiditic arenites (Fígols); TSU-3, channels (Torla, Arro, and Gerbe), channel-lobe transition (Torla, Broto), and lobes (Cotefablo); TSU-4, canyon-channel transition, overbank deposits, and channel-lobe transition (Banastón 1 to 4); TSU-5, channel and channel-lobe transition (Ainsa 1 and 2), highsinuosity channel systems (Morillo), and channel-overbank complexes (Guaso).

**Figure 7:** Optical photomicrographs (cross-polarized light), cathodoluminescence images and BSE images showing: **A, B**) red luminescent intragranular calcite cement (TSU-5); the brighter luminescence observed is due to the presence of elevated Mn/Fe ratio. **C, D**) Dark-red luminescent intragranular calcite cement (TSU-5). **E, F**) Intragranular and intergranular calcite cement engulfing small crystals of pyrite. Note in Part E the presence of partially broken skeletal fossils by mechanical compaction, which predates the intergranular calcite cement.

⇒



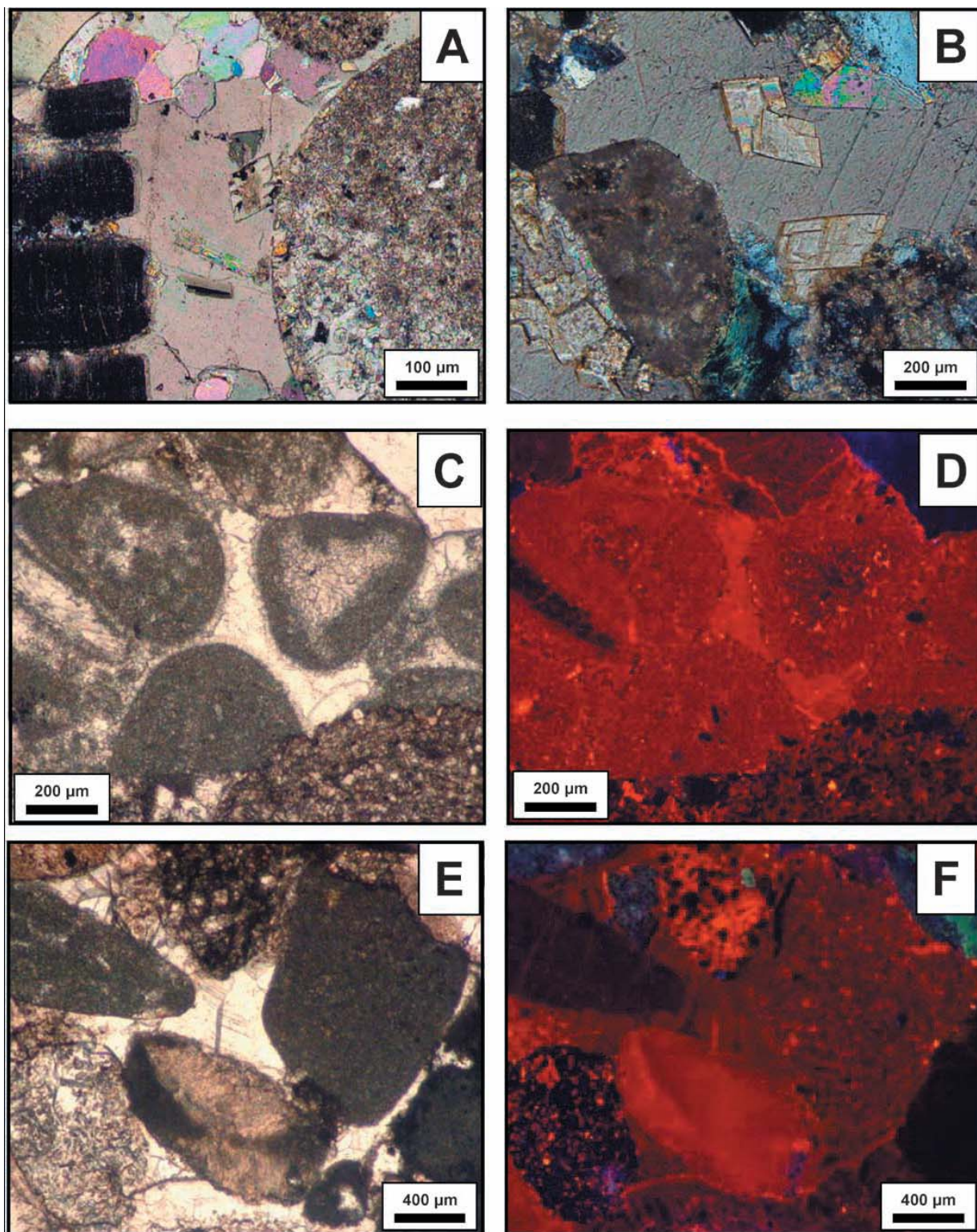


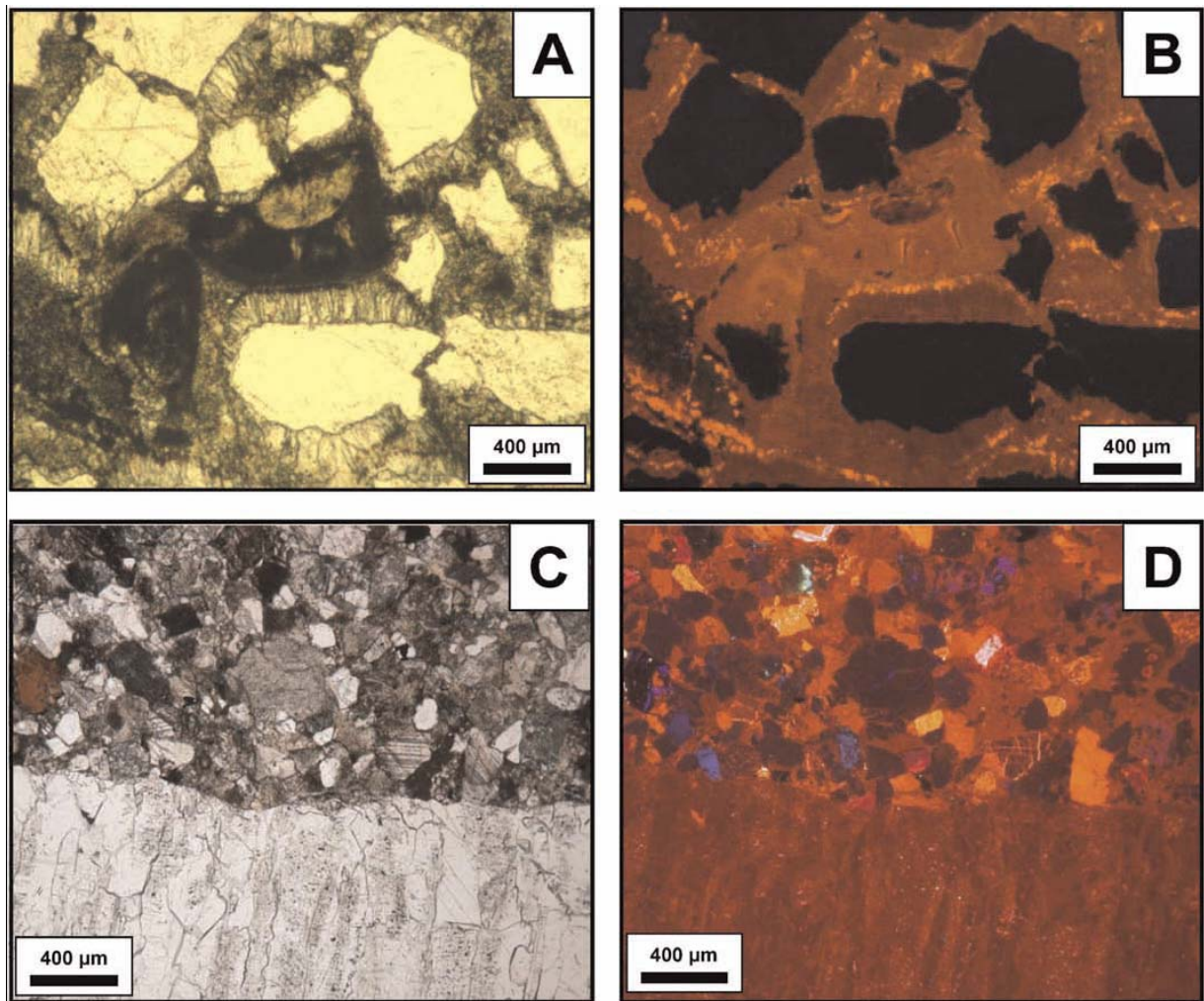


**Figure 8:** Cross plots of Fe versus Sr (TSU-2), and Fe versus Mn (TSU-3, TSU-4, and TSU-5) of calcite and dolomite cements showing the high Sr contents in fibrous calcite cement of TSU-2 and the high Mn and Fe contents in the outer dolomite overgrowth compared to inner overgrowth.

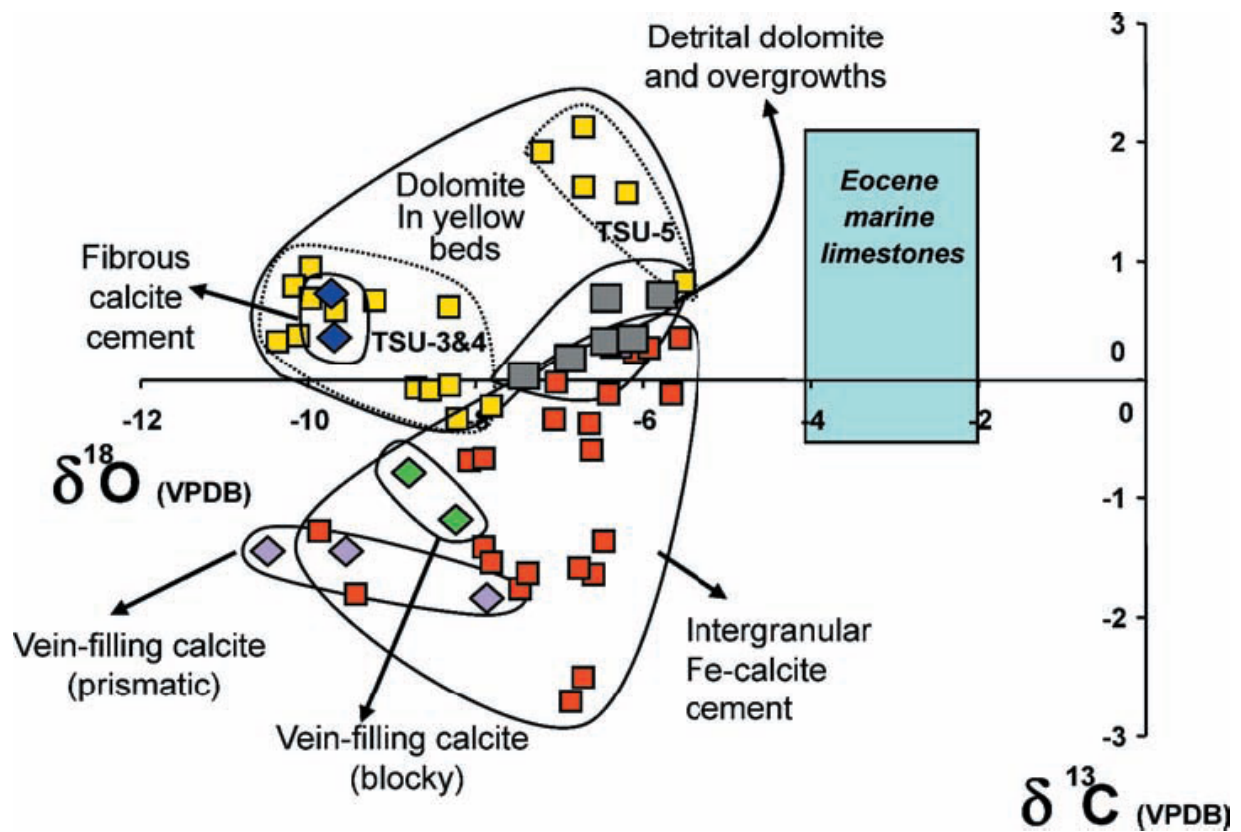
**Figure 9:** Optical photomicrographs (cross-polarized light) and cathodoluminescence images showing: **A, B**) small dolomite crystals around the framework grains engulfed by the coarse mosaics of intergranular calcite cement. **C, D**) Dark-red to nonluminescent drusy crystals followed by red luminescent mosaic calcite crystals (TSU-5). **E, F**) nonluminescent to dark red luminescent calcite cement enclosing well rounded detrital carbonate grains (CE and CI), green and blue detrital plagioclase, and volcanic rock fragment in TSU-5 turbidites.

⇒

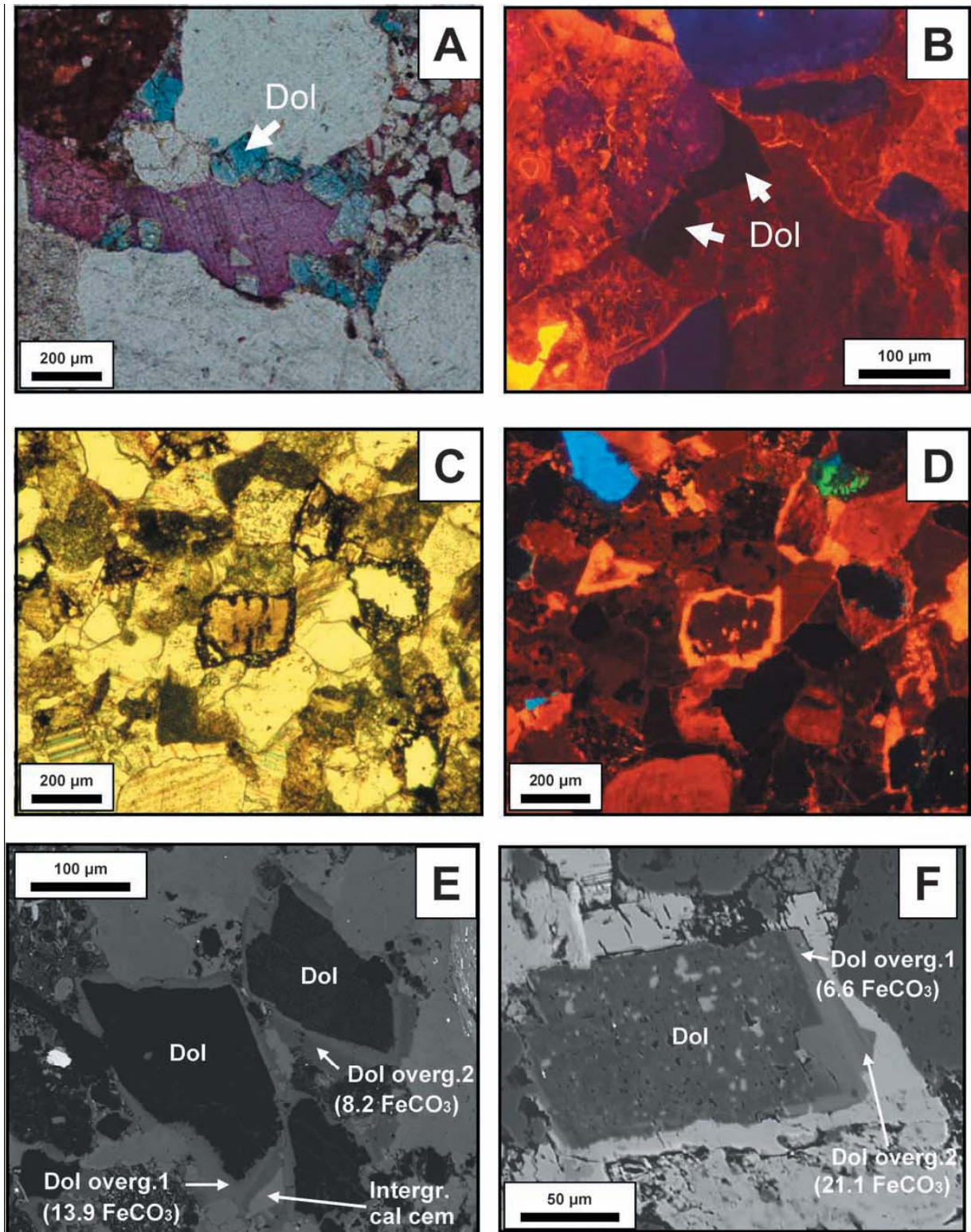




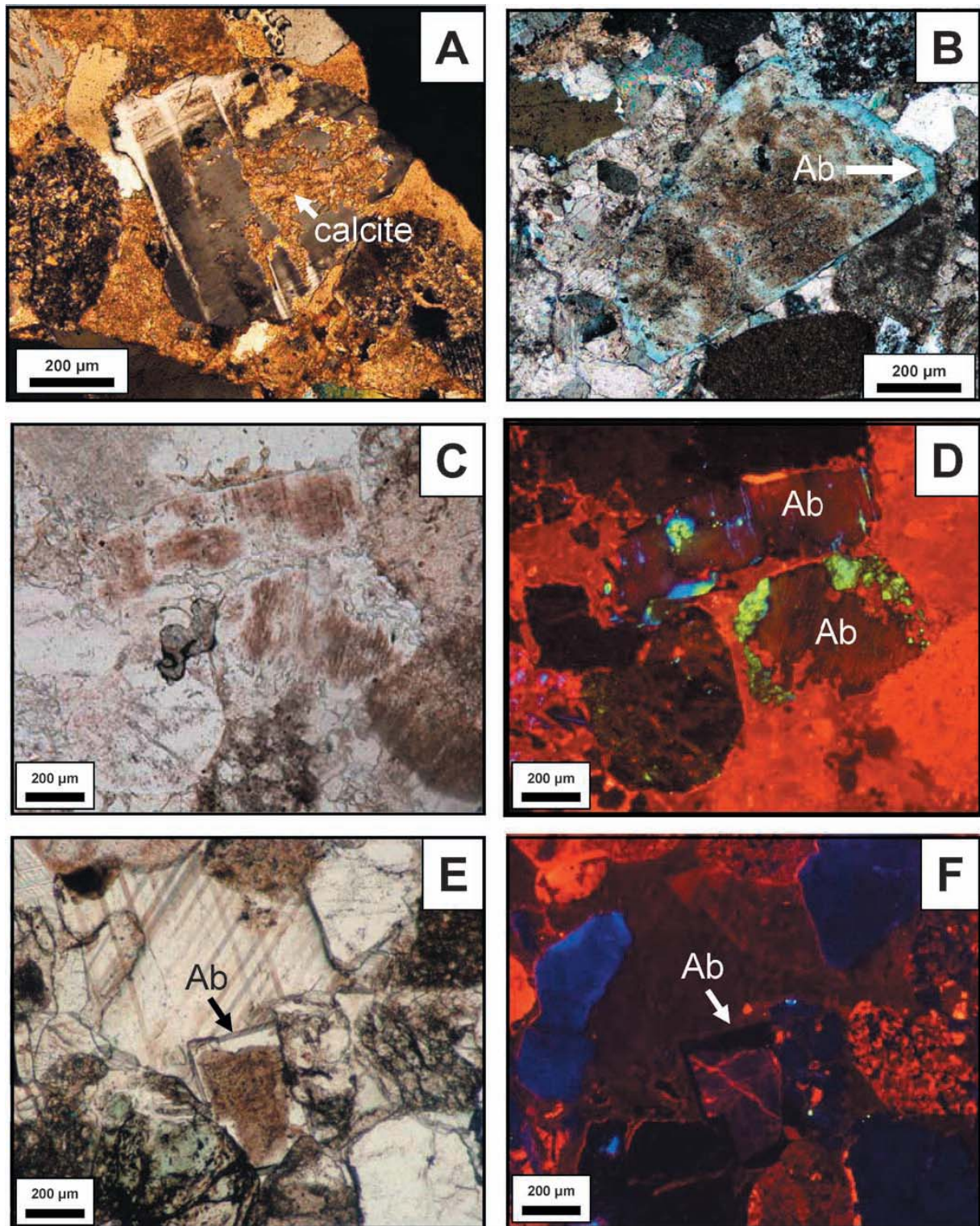
*Figure 10: Optical photomicrographs (cross-polarized light) and cathodoluminescence images showing: **A, B**) dark red luminescent fibrous to bladed calcite cement engulfed in a red luminescent intergranular calcite cement (TSU-2 quartzarenites). **C, D**) Partial view of red luminescent vein-filling calcite cement in a subarkose from TSU-2.*



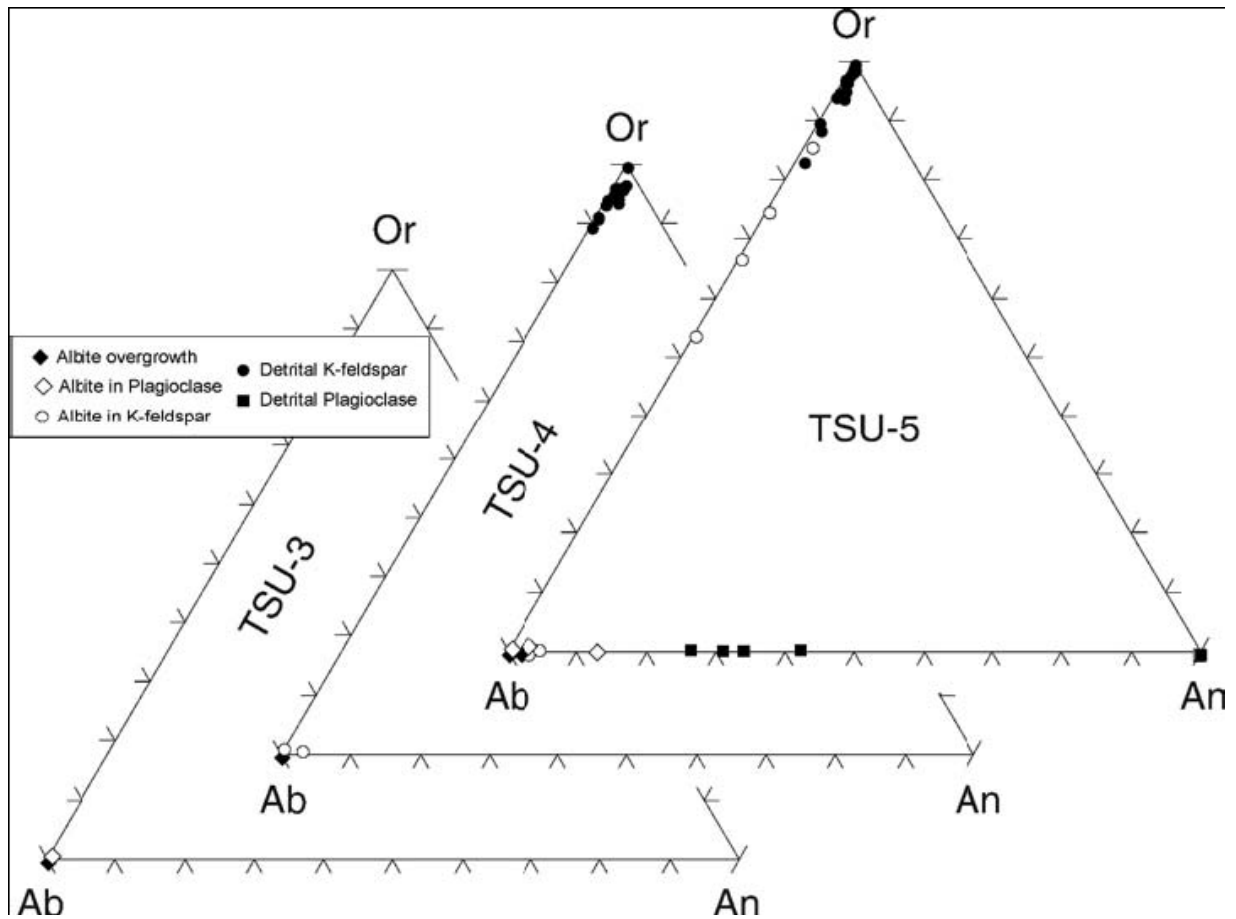
*Figure 11: Cross plot of  $\delta^{13}\text{C}_{\text{V-PDB}}$  versus  $\delta^{18}\text{O}_{\text{V-PDB}}$  of calcite cements and detrital dolomite grains and their overgrowths in the studied turbidite arenites. Authigenic dolomite in the "yellow beds" corresponds to dolomite occurring in condensed succession of the turbidite arenites of the Hecho Group (Marfil et al. in press).*



**Figure 12:** **A)** Optical photomicrograph (plane polarized) showing early dolomite (blue stained color) postdated by intergranular ferroan calcite cement (purple stained color). **B)** Cathodoluminescence image showing nonluminescent early dolomite cement (TSU-4). **C, D)** Optical photomicrograph (plane-polarized and cathodoluminescence images, respectively) of dolomite detrital grains showing the brighter luminescence of the overgrowths. **E, F)** BSE image of two chemical zones of dolomite overgrowths with different Fe and Mn contents (TSU-4).



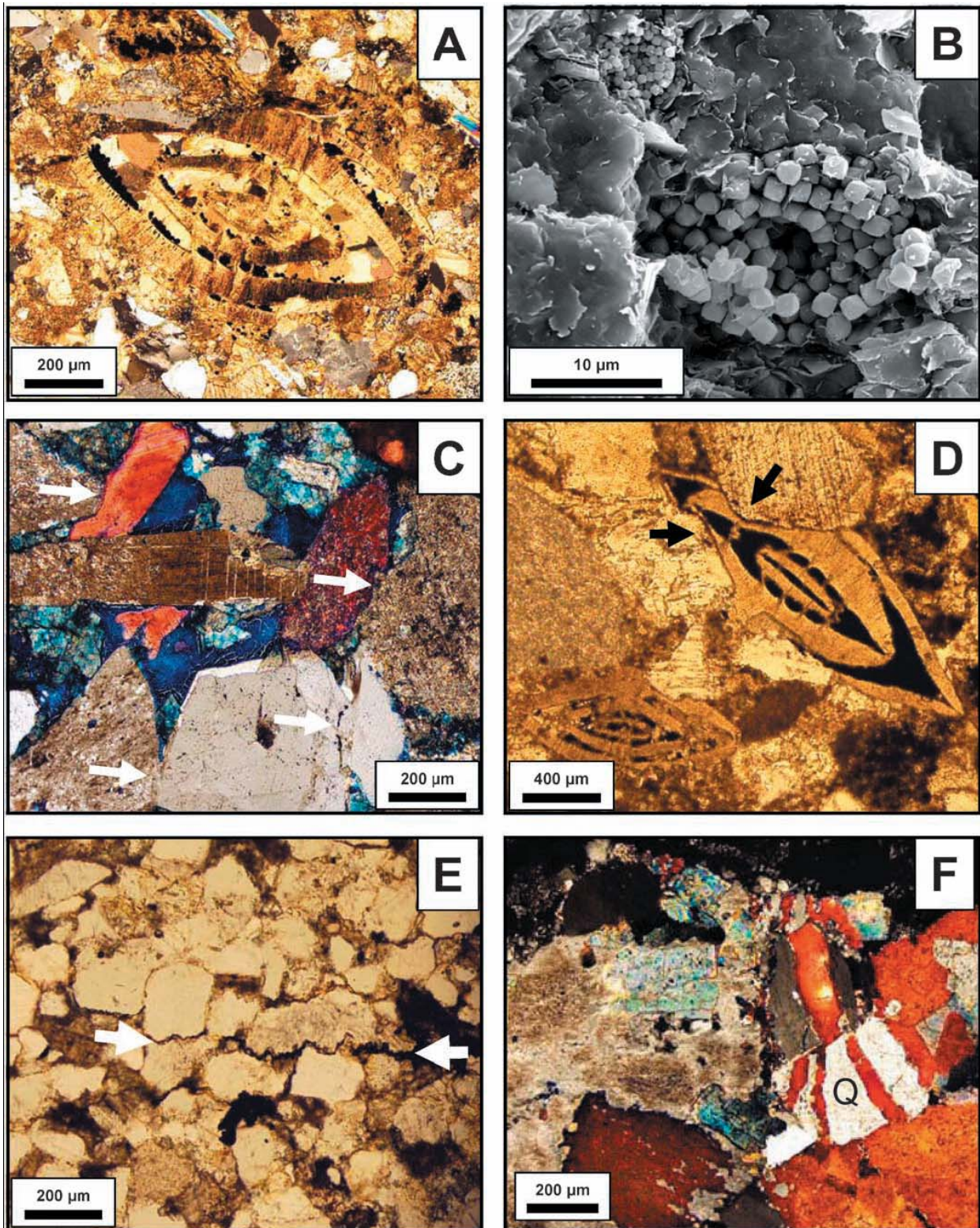
**Figure 13:** **A)** Optical photomicrograph (cross-polarized light) showing partly albitized K-feldspar (Ab). Calcite cement (Ca) is selectively replacing the non-albitized parts of the detrital feldspar while the albitized part remained unaffected. **B)** Optical photomicrograph (cross-polarized light) showing albitic overgrowth on K-feldspar. **C)** Optical micrograph (plane-polarized light) showing turbid, vacuolated appearance, which is typical of albitized feldspars. **D)** CL image of Part C showing diagenetic albite (dark luminescent) replacing K-feldspar and coexisting with inherited plagioclase (green and blue luminescent). **E)** Optical photomicrograph (plane-polarized light) showing albitic overgrowths on plagioclase. **F)** CL image of Part E showing that the overgrowths are characterized by dark luminescence, which is typical of diagenetic albite. The diagenetic albite overgrowths on plagioclase grains are engulfed by, and hence predate, ferroan calcite cement (Ca).



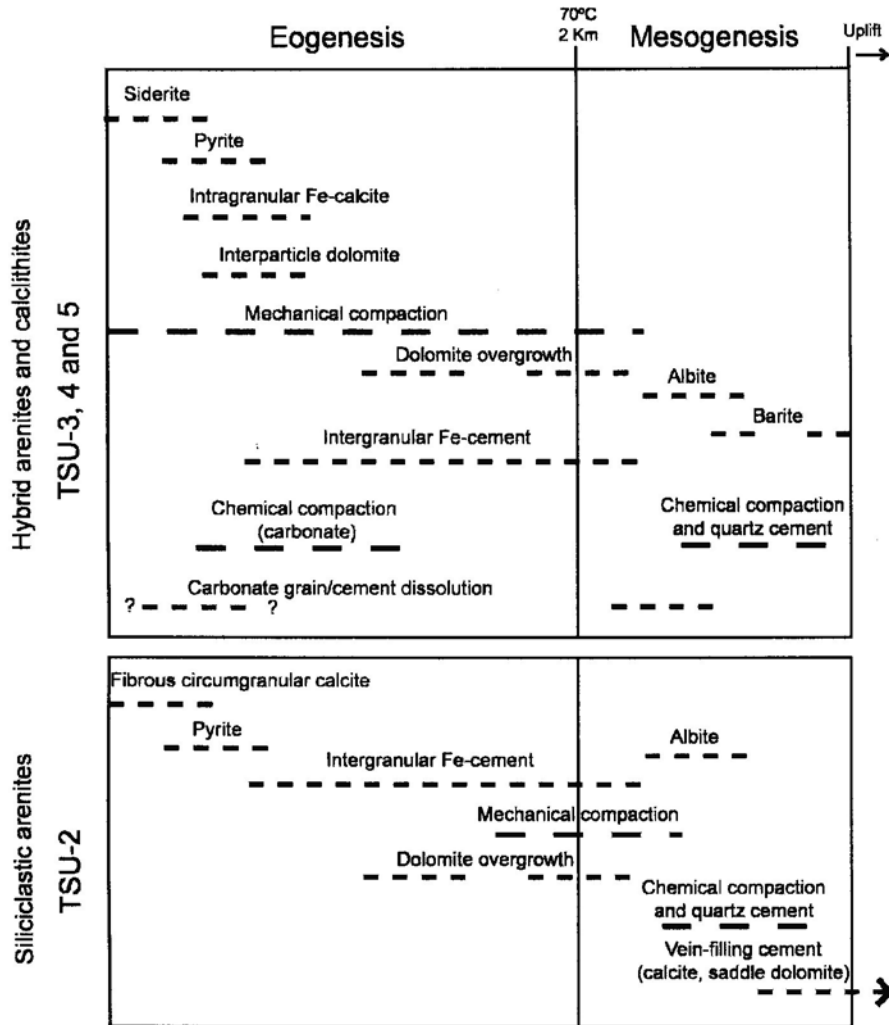
**Figure 14:** Ternary diagrams showing the electron-microprobe chemical composition of detrital feldspars and diagenetic albite. In contrast to detrital feldspar, albite overgrowths show pure end-member composition.

**Figure 15:** **A)** Optical photomicrograph (cross-polarized light) showing early pyrite crystals engulfed in intragranular calcite cement. **B)** SEM view of early diagenetic pyrite framboids within carbonate bioclasts. **C)** Optical photomicrograph (cross-polarized light) showing grain-to-grain contacts (TSU-4). **D)** Optical photomicrograph (plane-polarized light) showing concavo-convex contacts between detrital carbonate grains (CE) and foraminifera fossils (CI; TSU-4). **E)** Optical photomicrograph (plane-polarized light) showing sutured contacts between quartz grains (TSU-2). **F)** Calcite cement in fractured quartz grains.

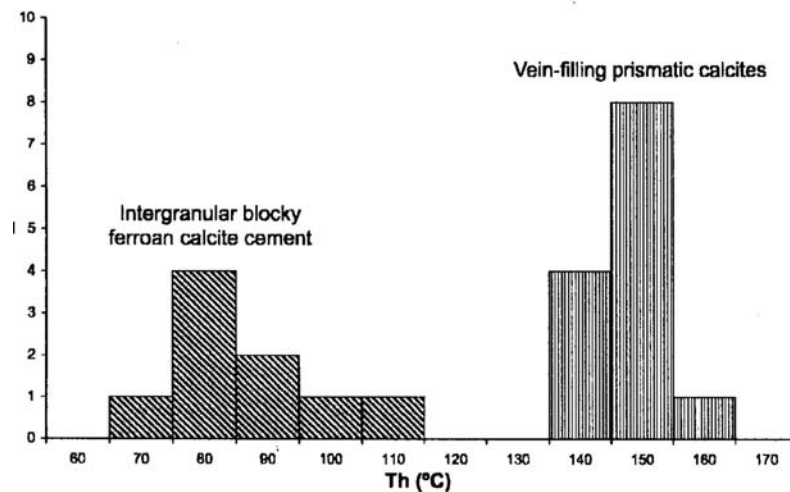
⇒







*Figure 16: General paragenetic sequence of diagenetic events in the Hecho Group turbidite sandstones constructed on the basis of the textural relationships among diagenetic events.*



*Figure 17: Microthermometry of aqueous fluid inclusions in intergranular blocky ferroan calcite cement and in vein-filling prismatic calcites showing the higher temperatures of the vein-filling prismatic calcites and the wide range of precipitation temperatures of the intergranular calcite cement.*

**Tables**

**Table 1: Modal analyses of the studied arenites of the Hecho Group "tectosedimentary units" (TSU).**

Tectono Sedimentary Unit		TSU-2									TSU-3																							
Turbidite Systems		FIGOLS			TORLA			BROTO 4&5			BROTO 5			BROTO 6			GERBE			COTEFABLO														
Composition		Arenites			Hybrid Arenites			Calclithites			Calclithites			Hybrid Arenites			Calclithites			Hybrid Arenites														
Number of Samples		6			4			4			5			11			1			4			29			10			19					
		min.	max.	ave.	min.	max.	ave.	min.	max.	ave.	min.	max.	ave.	min.	max.	ave.	min.	max.	ave.	min.	max.	ave.	min.	max.	ave.	min.	max.	ave.	min.	max.	ave.	min.	max.	ave.
Quartz monocrystalline	NCE Q	30.3	67.0	50.1	24.3	42.7	30.3	32.3	34.3	33.2	28.7	34.3	31.5	12.2	28.3	20.3	30.1	10.3	32.9	23.6	28.2	31.6	24.7											
Quartz polycrystalline with 2-3 subgrains	NCE Q	2.7	14.7	7.2	4.0	8.7	6.3	4.0	12.0	8.3	3.0	8.3	5.1	1.0	6.7	4.4	7.4	4.3	5.7	5.0	6.1	6.9	5.2											
Quartz polycrystalline with > 3 subgrains	NCE Q	0.7	3.3	1.8	1.0	4.3	2.7	3.3	5.7	4.9	2.0	9.0	5.0	-	4.3	1.1	2.7	1.7	3.0	2.4	3.1	4.2	2.1											
Quartz in rock fragments	NCE Q	-	-	-	-	5.0	1.6	-	0.7	0.3	-	1.0	0.2	-	2.5	0.9	2.3	0.3	2.0	1.1	1.1	0.9	1.2											
Carbonate replacement on quartz	-	-	-	-	-	-	-	-	-	-	-	-	-	-	3.0	1.3	-	-	-	-	0.2	0.0	0.4											
K-feldspar	NCE F	-	2.0	0.6	-	7.3	1.9	-	2.0	1.3	0.3	2.3	1.4	-	2.3	1.0	1.7	-	2.0	0.8	1.3	1.5	1.2											
K-feldspar in rock fragment	NCE F	-	-	-	-	-	-	-	0.3	0.1	-	-	-	-	0.3	-	-	-	-	-	0.0	0.0	0.0											
Clay minerals replacement on K-feldspar	-	-	-	-	2.0	0.7	-	-	-	-	-	-	-	-	0.9	0.1	1.7	-	0.7	0.2	0.4	0.6	0.3											
Carbonate replacement on K-feldspar	-	1.0	0.2	-	6.7	2.0	-	-	-	-	-	-	-	5.0	0.5	2.3	-	1.0	0.4	0.9	0.8	1.0												
Plagioclase	NCE F	-	1.3	0.4	-	1.7	0.6	9.3	10.7	9.8	4.0	9.7	6.3	2.0	6.7	4.1	0.7	0.3	2.3	1.3	3.8	5.6	2.0											
Plagioclase in rock fragment	NCE F	-	-	-	-	-	-	-	-	-	-	1.7	0.3	-	2.3	0.3	-	-	-	-	0.1	0.1	0.1											
Clay minerals replacement on plagioclase	-	-	-	-	-	-	5.7	7.3	6.7	3.3	5.7	4.9	0.7	5.7	2.6	-	-	0.3	0.2	2.4	3.8	0.9												
Carbonate replacement on plagioclase	-	1.7	0.8	-	1.3	0.5	-	1.3	0.3	-	3.3	1.6	0.7	7.0	4.2	-	-	3.0	1.1	1.3	0.6	1.9												
Metamorphic rock fragment	NCE L	-	0.7	0.2	-	-	-	0.7	0.3	0.3	2.7	1.6	-	2.0	0.6	-	-	0.3	0.1	0.4	0.6	0.2												
Plutonic rock fragment	NCE L	-	-	-	3.7	1.5	-	1.0	0.3	-	1.0	0.3	-	0.3	-	0.3	-	2.0	0.6	0.5	0.3	0.7												
Volcanic rock fragment	NCE L	-	-	-	-	-	-	-	-	-	0.3	0.1	-	-	-	-	-	-	-	0.0	0.0	0.0												
Sandstone rock fragment	NCE L	-	0.3	0.1	-	3.0	1.1	1.0	2.7	1.8	-	2.7	1.3	-	5.9	2.6	0.3	-	2.3	1.0	1.3	1.1	1.6											
Shale rock fragment	NCE L	-	-	-	-	-	-	-	0.3	0.1	-	-	-	-	0.3	0.1	-	-	-	-	0.0	0.0	0.0											
Chert	NCE L	-	1.3	0.6	0.7	4.3	2.2	1.3	4.3	3.1	1.0	7.0	2.9	-	2.7	0.8	5.0	1.7	4.3	3.3	2.9	3.7	2.1											
Mica	-	2.7	0.6	-	0.7	0.3	-	1.3	0.6	0.7	2.7	1.4	-	4.7	1.5	1.0	-	-	-	-	0.8	1.0	0.6											
Mica in metamorphic rock fragments	-	-	-	-	-	-	-	-	-	-	-	-	-	-	0.3	-	-	-	-	-	0.0	0.0	0.0											
Stable heavy minerals (Zircon, rutile, tourmaline,...)	-	1.7	0.7	-	0.3	0.1	-	-	-	-	-	0.7	0.3	-	0.7	0.2	-	-	-	-	0.1	0.1	0.1											
Organic matter	-	0.7	0.1	-	-	-	-	-	-	-	-	2.0	1.1	-	2.7	0.7	-	-	0.7	0.2	0.3	0.4	0.3											
Phosphates	NCI	-	-	-	-	-	-	-	-	-	-	-	-	-	-	-	-	-	-	-	0.0	0.0	0.0											
Pelitic rip-up clast	NCI	-	-	-	-	-	-	-	-	-	-	-	-	-	-	-	-	-	-	-	0.0	0.0	0.0											
Monocrystalline sparitic limestone	CE	-	5.3	1.6	4.0	8.1	6.3	0.3	12.0	5.2	3.3	12.0	6.2	1.3	20.7	8.8	2.0	4.3	10.6	7.9	6.1	4.5	7.7											
Sparitic limestone	CE	-	1.3	0.3	-	5.4	2.2	1.0	3.3	1.8	1.7	5.3	3.1	2.0	6.7	4.1	2.3	2.0	7.0	4.4	3.0	2.4	3.6											
Micritic limestone	CE	3.0	10.7	6.6	6.0	14.8	10.2	5.3	12.0	7.9	3.0	7.7	5.1	3.4	16.7	9.1	11.4	17.1	21.3	19.4	10.5	8.1	12.9											
Dolostone	CE	-	13.0	2.4	-	2.7	1.3	-	0.7	0.3	3.0	7.0	5.1	-	2.3	1.0	2.0	-	-	-	1.6	2.5	0.7											
Dolomiticrite	CE	-	-	-	-	-	-	-	-	-	-	1.0	0.3	-	2.0	0.3	-	-	-	-	0.1	0.1	0.1											
Grainstone	CE	-	0.7	0.2	-	2.0	0.5	2.7	5.0	3.3	-	1.7	0.6	-	4.3	1.2	0.3	1.0	1.7	1.3	1.2	1.4	1.0											
Other fossils (microcodium)	CE	0.7	3.7	1.6	1.3	3.0	2.3	0.7	4.7	2.5	-	1.3	0.3	-	3.3	0.4	0.7	2.7	5.3	3.9	1.7	1.1	2.2											
Detrital dolomite	CE	2.3	2.3	0.4	6.7	6.7	1.7	-	-	-	-	-	-	-	6.7	0.6	4.7	0.7	3.3	1.3	1.4	1.6	1.2											
Bioclast	CI	-	7.6	2.2	2.3	20.7	8.3	-	1.3	0.8	-	2.7	1.1	-	15.9	4.1	-	1.0	13.7	4.7	3.2	0.7	5.7											
Intraclast	CI	-	-	-	-	-	-	-	-	-	-	-	-	-	-	-	-	-	-	-	0.0	0.0	0.0											

Tectono Sedimentary Unit		TSU-2									TSU-3																				
Turbidite Systems		FIGOLS			TORLA			BROTO 4&5			BROTO 5			BROTO 6			GERBE			COTEFABLO											
Composition		Arenites			Hybrid Arenites			Calclithites			Calclithites			Hybrid Arenites			Calclithites			Hybrid Arenites											
Number of Samples		6			4			4			5			11			1			4			29			10			19		
		min.	max.	ave.	min.	max.	ave.	min.	max.	ave.	min.	max.	ave.	min.	max.	ave.	min.	max.	ave.	min.	max.	ave.	min.	max.	ave.	min.	max.	ave.	min.	max.	ave.
Peloid	CI	-	-	-	-	-	-	-	-	-	-	-	-	-	-	-	-	-	-	-	0.0	0.0	0.0								
Calcite cement	-	3.7	47.3	15.3	6.0	21.5	10.8	-	10.0	4.9	-	18.0	9.9	2.0	26.3	18.2	9.0	3.3	21.3	11.9	10.8	7.9	13.6								
Replacive calcite cement	-	-	-	-	-	-	-	-	-	-	-	-	-	-	-	-	-	-	-	-	0.0	0.0	0.0								
Replacive siderite cement	-	-	1.7	0.3	-	-	-	-	-	-	-	-	-	-	-	-	1.7	-	-	-	0.3	0.6	0.0								
Dolomite cement	-	-	22.6	4.8	-	3.0	0.8	-	0.3	0.1	-	2.7	1.5	-	2.0	0.7	-	-	-	-	0.5	0.5	0.5								
Replacive dolomite cement	-	-	-	-	-	2.0	0.5	-	-	-	-	-	-	-	-	-	-	-	-	-	0.1	0.0	0.2								
Albitization	-	-	-	-	-	-	-	-	-	-	-	-	-	-	-	-	-	-	-	-	0.0	0.0	0.0								
Other cements (Q, K-feldspar, Fe-oxide,...)	-	-	1.3	0.7	0.3	2.3	1.0	-	-	-	-	-	-	-	2.7	0.3	5.0	-	1.3	0.4	1.1	1.7	0.6								
Pyrite	-	-	1.3	0.3	-	1.0	0.3	-	-	-	-	0.3	0.1	-	0.9	0.3	-	0.3	1.0	0.7	0.2	0.0	0.4								
Siliclastic matrix	-	-	-	-	-	-	-	-	-	-	-	-	-	-	-	-	-	-	-	-	0.0	0.0	0.0								
Carbonate matrix	-	-	-	-	-	-	-	-	0.7	0.3	-	1.0	0.3	-	1.3	0.2	-	-	-	-	0.1	0.2	0.1								
Carbonate pseudomatrix	-	-	-	-	-	-	-	-	3.7	1.5	-	2.7	1.2	0.6	9.0	3.4	-	-	-	-	1.0	0.9	1.1								
Carbonate undetermined grains	-	-	-	-	-	6.0	2.3	-	0.7	0.2	-	-	-	-	0.7	0.1	5.4	0.7	4.0	2.9	1.8	1.8	1.8								
Porosity	-	-	-	-	-	-	-	-	-	-	-	-	-	-	-	-	-	-	-	-	0.0	0.0	0.0								

**Table 2: Summary of elemental composition of diagenetic carbonate cements obtained by electron microprobe analysis showing the chemical differences between the diagenetic carbonates in the Hecho Group “tectosedimentary units” (TSU).**

	<i>n</i>	Ca (mole %)	Mg (mole %)	Fe (mole %)	Mn (mole %)	Sr (mole %)
<i>Fibrous calcite cement (TSU-2)</i>	24	97.5	1.1	0.8	0.1	0.5
<i>Interparticle ferroan cement</i>						
TSU-5	14	97.3	0.5	2.0	0.1	0.1
TSU-4	32	97.2	1.2	1.4	0.1	0.1
TSU-3	27	96.1	1.5	2.0	0.1	0.3
<i>Intraparticle ferroan cement</i>						
TSU-5	4	98.2	0.2	1.4	0.1	0.1
TSU-4	19	95.3	2.2	2.0	0.1	0.4
TSU-3	19	96.6	1.4	1.9	0.1	0
<i>Dolomite overgrowth 1 (TSU-4 and 5)</i>	28	56.5	33.4	9.8	0.1	0.1
<i>Dolomite overgrowth 2 (TSU-4 and 5)</i>	5	57.3	28.3	13.4	0.4	0
<i>Vein-filling calcite cement</i>	69	97.3	1.0	1.4	0.1	0.2

*n*: number of analyses.

**Table 3: Summary of elemental composition of diagenetic carbonate cements obtained by electron microprobe analysis showing the chemical differences between the diagenetic carbonates in the Hecho Group “tectosedimentary units” (TSU).**

	<i>n</i>	(ppm)	Fe	Mn	Ba	Sr
<i>Fibrous calcite cement (TSU-2)</i>	24	Min.	2340	< d.l.	< d.l.	1640
		Max.	6179	720	484	5978
		Av.	4540	279	109	4399
<i>Interparticle ferroan calcite cement</i>						
TSU-5	14	Min.	7594	< d.l.	< d.l.	< d.l.
		Max.	15103	1154	869	2241
		Av.	10929	654	212	444
TSU-4	32	Min.	630	< d.l.	< d.l.	< d.l.
		Max.	13548	1231	1424	2841
		Av.	7808	635	267	252
TSU-3	27	Min.	1290	< d.l.	< d.l.	< d.l.
		Max.	15219	1115	2553	6875
		Av.	11313	530	375	2424
<i>Intraparticle ferroan calcite cement</i>						
TSU-5	4	Min.	4500	< d.l.	< d.l.	< d.l.
		Max.	12996	813	1585	3069
		Av.	7662	461	734	1131
TSU-4	19	Min.	3070	< d.l.	< d.l.	< d.l.
		Max.	15981	829	1317	12143
		Av.	11844	376	315	3375
TSU-3	19	Min.	8434	< d.l.	< d.l.	< d.l.
		Max.	13222	1154	1505	< d.l.
		Av.	10729	581	281	< d.l.
<i>Dolomite overgrowth 1 (TSU-4 and 5)</i>						
TSU-4 and 5	28	Min.	12071	< d.l.	< d.l.	< d.l.
		Max.	84009	1928	1352	3830
		Av.	61156	633	362	502
<i>Dolomite overgrowth 2 (TSU-4 and 5)</i>						
TSU-4 and 5	5	Min.	46450	1789	< d.l.	< d.l.
		Max.	112418	2548	448	< d.l.
		Av.	72264	1983	113	< d.l.
<i>Vein-filling calcite cement</i>						
TSU-4 and 5	69	Min.	< d.l.	< d.l.	< d.l.	< d.l.
		Max.	17551	1394	2920	9572
		Av.	7855	549	328	1717

*n*: number of analyses.  
 < d.l.: below detection limit.

Table 4: Summary of stable carbon and oxygen isotope analyses of calcite cements, detrital dolomite, and their overgrowth of the Hecho Group "tectosedimentary units" (TSU)

Sample	Site	TSU	System	Type of Cement	Calcite <sup>18</sup> O <sub>PDB</sub>	Calcite <sup>13</sup> C <sub>PDB</sub>	Type of Cement	Dolomite <sup>18</sup> O <sub>PDB</sub>	Dolomite <sup>13</sup> C <sub>PDB</sub>
GH100	LaTorrecilla	TSU5	Guaso	Intergranular calcite	-5.82	-0.12	Dolomite in YB	-5.48	0.84
GH101B	LaTorrecilla	TSU5	Guaso	Intergranular calcite	-6.11	0.24	Dolomite in YB	-6.20	1.61
GH101G2	LaTorrecilla	TSU5	Guaso	Intergranular calcite	-5.94	0.27	Dolomite in YB	-6.73	2.17
GH101G3	LaTorrecilla	TSU5	Guaso	Intergranular calcite	-5.57	0.35	Dolomite in YB	-6.72	1.67
CGG01C	LaTorrecilla	TSU5	Guaso	Intergranular calcite	-6.64	-0.59	Dolomite in YB	-7.23	1.96
CGB2-01	SanVicente	TSU4	Banaston3	Intergranular calcite	-7.07	-0.34	Dolomite in YB	-9.98	0.99
CGB2-02y1	SanVicente	TSU4	Banaston3	Intergranular calcite	-6.73	-2.50	Dolomite in YB	-10.13	0.42
CGB2-02y2	SanVicente	TSU4	Banaston3	Intergranular calcite	-6.87	-2.70	Dolomite in YB	-10.38	0.37
CGB2-02gr	SanVicente	TSU4	Banaston3	Intergranular calcite	-6.61	-1.64	Dolomite in YB	-8.23	-0.28
CGB2-03B	SanVicente	TSU4	Banaston3	Intergranular calcite	-6.77	-1.58	Dolomite in YB	-8.72	-0.02
GH01A	Labuerda	TSU4	Banaston2	Intergranular calcite	-6.50	-0.12	Dolomite in YB	-7.87	-0.29
GH01B1	Labuerda	TSU4	Banaston2	Intergranular calcite	-7.05	-0.03	Dolomite in YB	-10.17	0.84
GH01B3	Labuerda	TSU4	Banaston2	Intergranular calcite	-6.92	0.22	Dolomite in YB	-9.97	0.74
CGB1-01	Usana	TSU4	Banaston2	Intergranular calcite	-6.66	-0.37	Dolomite in YB	-8.32	0.66
CGB1-02	Usana	TSU4	Banaston2	Intergranular calcite	-6.48	-1.36	Dolomite in YB	-8.56	-0.05
GH18A3	Usana	TSU4	Banaston	Intergranular calcite	-7.66	-1.70	Detrital dolomite & overgrowth	-7.14	-1.17
GH31A6	Bergua	TSU4	Banaston	Intergranular calcite	-6.81	-0.65	Detrital dolomite & overgrowth	-5.75	0.72
GH163A	CarBolt	TSU4	Banaston	Intergranular calcite	-6.70	-0.07	Detrital dolomite & overgrowth	-6.11	0.36
GH18	Usana	TSU4	Banaston	Vein-filling calcite (prismatic)	-7.85	-1.82			
GH22B	Arro	TSU3	Broto6	Intergranular calcite	-7.98	-1.37	Dolomite in YB	-8.37	-0.01
GH23B	Arro	TSU3	Broto6	Intergranular calcite	-7.32	-1.73	Dolomite in YB	-10.14	0.25
GH26A1	Arro	TSU3	Broto6	Intergranular calcite	-8.07	-0.69	Dolomite in YB	-9.68	0.63
GH26A2	Arro	TSU3	Broto6	Intergranular calcite	-7.91	-0.67	Dolomite in YB	-9.22	0.71
GH231A4	Estrech	TSU3	Gerbe	Intergranular calcite	-7.94	-1.77			
GH25B4	Arro	TSU3	Broto	Intergranular calcite	-8.16	-0.59	Detrital dolomite & overgrowth	-7.38	0.04
GH29A1	Arro	TSU3	Broto	Intergranular calcite	-8.37	-0.95	Detrital dolomite & overgrowth	-8.52	-0.81
GH61A7	Fanlo	TSU3	Broto	Intergranular calcite	-8.50	-1.27	Detrital dolomite & overgrowth	-6.83	0.18
GH26A4	Cotefablo	TSU3	Cotefablo	Intergranular calcite	-5.87	-0.70	Detrital dolomite & overgrowth	-6.42	0.33
GH28	Fuebas	TSU3	Torla	Intergranular calcite	-10.01	-1.53	Detrital dolomite & overgrowth	-6.28	0.31
GH25B	Arro	TSU3	Broto	Vein-filling calcite (blocky)	-8.71	-0.75			
GH294	Arro	TSU3	Broto	Vein-filling calcite (blocky)	-8.14	-1.08			
GH61	Fanlo	TSU3	Broto	Vein-filling calcite (prismatic)	-10.42	-1.38			
GH206	Fuebas	TSU2	Figols	Intergranular calcite	-9.67	-2.01	Detrital dolomite & overgrowth	-6.42	0.69
GH212	Fuebas	TSU2	Figols	Fibrous calcite	-9.73	0.72			
GH226A	Fuebas	TSU2	Figols	Fibrous calcite	-9.68	0.38			
GH215	Fuebas	TSU2	Figols	Vein-filling calcite (prismatic)	-9.55	-1.36			

Table 5: Summary of electron microprobe chemical analyses on albite and detrital feldspars showing a pure end member composition of the albite overgrowth.

Sample	Turbidite System	TSU	%Phyllosilicates				%K-Feld					Others
			%Phyllosilicates	%Kaol	%Illite	%Chlorite	%Q	%Plag	%Cal	%Dol + Ank		
RAC-5	Jaca	TSU-5	9.0	2.8	5.6	0.6	47.1	0.4	-	40.4	3.1	
CAI-3	Ainsa	TSU-5	4.8	2.1	2.4	0.3	21.4	3.3	5.0	63.8	1.7	Pyrite
		Av. (n = 34)	3.8	1.4	2.3	0.2	28.0	2.6	4.7	55.3	5.5	
CBA-4	Banastón 5	TSU-4	4.9	1.9	2.5	0.5	30.2	2.9	1.9	60.1	-	
CO-2	Banastón 4	TSU-4	4.3	1.2	3.1	-	34.1	-	5.2	56.4	-	
SVB-3	Banastón 3	TSU-4	3.8	1.6	2.2	-	28.1	-	3.7	57.7	6.8	
B6	Banastón 2	TSU-4	4.5	1.5	3.0	-	16.6	0.7	2.7	67.4	8.1	Pyrite
		TSU-4	8.6	2.9	5.7	-	35.5	1.6	6.7	43.7	3.9	
BcC3	Banastón 1 and 2	Av. (n = 44)	4.5	1.9	2.6	0.1	31.2	1.5	5.1	54.8	2.9	
AR-C3	Broto 6	TSU-3	4.2	0.8	3.3	-	21.2	0.3	2.8	69.6	1.9	
BF-2	Broto 5	TSU-3	8.3	3.5	4.2	0.5	35.0	3.1	9.6	38.8	5.3	Pyrite
		TSU-3	4.5	1.2	1.5	1.8	52.6	2.7	17.7	22.0	0.5	
BR1	Broto 4 and 5	Av. (n = 39)	6.0	2.4	3.4	0.2	35.7	1.3	6.1	47.4	3.5	
GH220	Figols	TSU-2	33.5	10.5	14.2	8.8	37.7	-	15.0	9.2	4.6	Pyrite
GH219	Figols	TSU-2	4.9	4.9	+	-	60.1	-	-	35.0	-	
GH214B	Figols	TSU-2	-	-	-	-	54.6	-	13.8	31.6	-	Pyrite
GH-214A	Figols	TSU-2	-	-	-	-	86.5	-	-	13.5	-	Pyrite
		TSU-2	25.6	8.6	17.0	-	22.7	-	25.0	18.0	8.7	
GH-206	Figols	Av. (n = 5)	12.8	4.8	6.2	1.7	52.3	-	10.7	21.4	2.6	

+: presence.