



# **Fucus vesiculosus and spiralis species complex: a nested model of local adaptation at the shore level**

Emmanuelle Billard, Ester Serrao, Gareth Pearson, Christophe Destombe,  
Myriam Valero

## **► To cite this version:**

Emmanuelle Billard, Ester Serrao, Gareth Pearson, Christophe Destombe, Myriam Valero. *Fucus vesiculosus and spiralis species complex: a nested model of local adaptation at the shore level*. Marine Ecology Progress Series, 2010, 405, pp.163-174. 10.3354/meps08517 . hal-00494611

**HAL Id: hal-00494611**

**<https://hal.science/hal-00494611>**

Submitted on 23 Sep 2022

**HAL** is a multi-disciplinary open access archive for the deposit and dissemination of scientific research documents, whether they are published or not. The documents may come from teaching and research institutions in France or abroad, or from public or private research centers.

L'archive ouverte pluridisciplinaire **HAL**, est destinée au dépôt et à la diffusion de documents scientifiques de niveau recherche, publiés ou non, émanant des établissements d'enseignement et de recherche français ou étrangers, des laboratoires publics ou privés.



# *Fucus vesiculosus* and *spiralis* species complex: a nested model of local adaptation at the shore level

Emmanuelle Billard<sup>1,2,3,4</sup>, Ester Serrão<sup>3</sup>, Gareth Pearson<sup>3</sup>, Christophe Destombe<sup>1,2</sup>,  
Myriam Valero<sup>1,2,\*</sup>

<sup>1</sup>Université Pierre et Marie Curie (UPMC) Station Biologique de Roscoff, Equipe Biologie Evolutive et Diversité Marine (BEDIM), UMR 7144, BP 74, 29682 Roscoff Cedex, France

<sup>2</sup>Centre National de la Recherche Scientifique (CNRS) Station Biologique de Roscoff, Equipe Biologie Evolutive et Diversité Marine (BEDIM), UMR 7144, BP 74, 29682 Roscoff Cedex, France

<sup>3</sup>Centro Ciências do Mar (CCMAR), Centro Interdisciplinar de Investigação Marinha e Ambiental (CIMAR), Universidade do Algarve, Gambelas, 8005-139 Faro, Portugal

<sup>4</sup>Present address: Laboratoire Génétique et Evolution des Populations Végétales (GEPV), Université Lille 1, UMR 8016, 59655 Villeneuve d'Ascq Cedex, France

**ABSTRACT:** Intertidal rocky shores provide classic examples of habitat-driven divergent selection. We show that the species complex *Fucus vesiculosus* L./*F. spiralis* L. is composed of 3 distinct genetic entities that have evolved along different time scales. Using assignment tests based on microsatellite markers and performed on randomly sampled individuals in 2 separate geographic regions (Portugal and France), we reveal that *F. spiralis* consists of 2 genetic entities that have distinct vertical distributional patterns along the intertidal gradient of selective pressures. Individuals assigned to the cluster found higher on the shore are also morphologically different. They are smaller and bushy, with dichotomous ramifications and no sterile rime around receptacles. Patterns of genetic divergence suggest different times and pathways to reproductive isolation. Divergence between *F. vesiculosus* and the *F. spiralis* complex seems to have occurred first, coinciding with divergence in reproductive mode; dioecy versus selfing hermaphroditism. Later, in the hermaphroditic lineage, parallel evolution of 2 co-occurring genetic clusters may have been driven by natural selection and facilitated by high selfing rates in the *F. spiralis* complex.

**KEY WORDS:** Environmental gradient · Speciation · *Fucus* spp. · Gene flow · Genetic cluster

—Resale or republication not permitted without written consent of the publisher—

## INTRODUCTION

The process of divergence by which new species originate was traditionally thought to occur without gene flow between geographically isolated populations (i.e. allopatric speciation). However, a number of theoretical models and examples of speciation in the face of gene flow have now emerged (for recent reviews see Schluter, 2001, 2009, Hey, 2006, Butlin et al. 2008, Fitzpatrick et al. 2008). Sympatric speciation driven by disruptive selection while populations are still exchanging genes, also referred to as 'adaptive speciation,' is now considered a possible mechanism of

speciation, where the evolution of reproductive isolation is a response to selection and not a simple by-product of divergence.

Intertidal rocky shores, with their sharp gradients of physical and biotic selective pressures, have provided some of the most classic examples of habitat-driven divergence with gene flow, a first step towards broad sympatric speciation. Such is the case of the high/low shore ecotypes of the gastropod *Littorina saxatilis*, which can mate and yield fertile intermediates (Rolán-Alvarez et al. 1997), a divergent selection process that has apparently occurred independently in different intertidal shores of northern Spain (Quesada et al.

\*Corresponding author. Email: valero@sb-roscoff.fr

2007, Galindo et al. 2009, but see Butlin et al. 2008). The intertidal zone offers highly heterogeneous habitats over very small scales, where, based on the local emersion times, organisms may encounter contrasting levels of selective pressure. Stressors may be abiotic, such as desiccation and wave exposure, or they can be biotic, such as the presence of predators or competitors. The combination of these different factors strongly shapes species distribution along intertidal environmental gradients, as testified by the local distributions of intertidal organisms, which have been an important object of study for over a century (Jonsson et al. 2006). Among these, the genus *Fucus* is composed by multiple species that are distributed within different but overlapping vertical limits all along northern Atlantic intertidal zones, from the mediolittoral (*F. serratus*, *F. evanescens*) to the upper shore (*F. spiralis*). One of the earliest hypotheses explaining this pattern was that biotic factors are more often involved in determining lower shore limits, whereas abiotic stressors such as desiccation are the major factors delimiting the upper limit of species (Connell 1972, Underwood 1979, Lubchenco 1980), although alternative explanations and more complex interactions are currently known in intertidal organisms (e.g. Hawkins & Hartnoll 1985).

Evolutionary divergence between *Fucus* populations and species can take place rapidly in response to physical stress, as documented for emersion stress (Pearson et al. 2000) and temperature (Pearson et al. 2009). In *Fucus* species co-occurring along intertidal gradients, upper-shore *F. spiralis* recovers better from desiccation (Dring & Brown 1982) and from exposure to more extreme high and low temperatures (Chapman 1995, Davison & Pearson 1996) than *F. vesiculosus* or *F. serratus*, and, in turn, *F. vesiculosus* recovers better from temperature stress than lower-shore *F. serratus*, although in the latter the recovery capacity is even further diminished at the warmer edge of the distributional range (Pearson et al. 2009). Species from the upper shore also tend to have greater physiological performance at low tide while still hydrated (Skene 2004). Field studies also suggest that distributional limits may be determined by competitive interactions mediated by emersion stress. For example, *F. vesiculosus* can extend its vertical range upshore when *F. spiralis* is removed (Hawkins & Hartnoll 1985, Chapman & Johnson 1990), whereas *F. spiralis* is outcompeted by *F. vesiculosus* in the mid-shore (Chapman 1990, 1995). Moreover, Vernet & Harper (1980) advanced the hypothesis that the contrasting selective pressures on the shore could be the driving force promoting divergence in mating systems between *F. spiralis* (hermaphroditic) and *F. vesiculosus* (dioecious). Typically, for the *Fucus* species complex, vertical gradients coincide with variation in the reproductive system, with her-

maphroditic *F. spiralis* found on average above dioecious *F. vesiculosus*. Reproductive strategies are thus also suspected to be involved in the maintenance of different species along this environmental gradient. Hermaphroditism by enabling selfing, in addition to limiting gene flow between species, allows the maintenance of local adaptations (see Takebayashi & Morrell 2001 for a review). This may be important for the persistence of the high intertidal species *F. spiralis*, and data available to date suggest that selfing is predominant in this species (e.g. Billard et al. 2005, Engel et al. 2005, Perrin et al. 2007, but see also Coleman & Brawley 2005).

*Fucus* species are genetically very closely related, and all phylogenetic studies (Leclerc et al. 1998, Serrão et al. 1999, Coyer et al. 2006) suggest a recent and rapid radiation. The genus *Fucus* consists of 2 clades, the first containing *F. vesiculosus* and *F. spiralis*, and a second that includes *F. serratus*, which are the dominant *Fucus* species found on open-coast rocky shores of the European eastern Atlantic. *Fucus* species are still capable of hybridization (Stomps 1911, Kniep 1925, Coyer et al. 2002, 2007, Wallace et al. 2004, Billard et al. 2005, Engel et al. 2005) suggesting firstly that their separation is recent and that where they co-occur on the same shores, environmental gradients may play an important role in the maintenance of species. In addition, several morphotypes have been described, of which several varieties are still currently accepted (cf. [www.algaebase.org](http://www.algaebase.org), Guiry & Guiry 2009), including several in *F. vesiculosus* but only one in *F. spiralis*: *F. spiralis* var. *platycarpus* Batters 1902 (cited in Gomez-Garreta 2000). It is not understood whether such varieties are of phenotypic or genotypic nature and whether they are strictly sympatric or habitat-segregated to any extent when occurring on the same shore.

Distribution along a linear gradient thus offers a unique opportunity to study micro-evolutionary mechanisms. The present study aims at understanding the spatial distribution of *Fucus* genetic entities along intertidal emersion stress gradients and the possible pathway having led to the evolution of these *Fucus* entities.

## MATERIALS AND METHODS

**Transect sampling.** Sampling of individuals was conducted in Santec (Brittany, France; 48° 42' 80" N, 04° 02' 21" W) and in Viana do Castelo (north Portugal; 41° 41' 51" N, 8° 51' 07" W). These 2 sites are rocky shores moderately exposed to wave activity, showing different topography and tide amplitude (Fig. 1). In Santec, the rocky shore is subject to transient sand

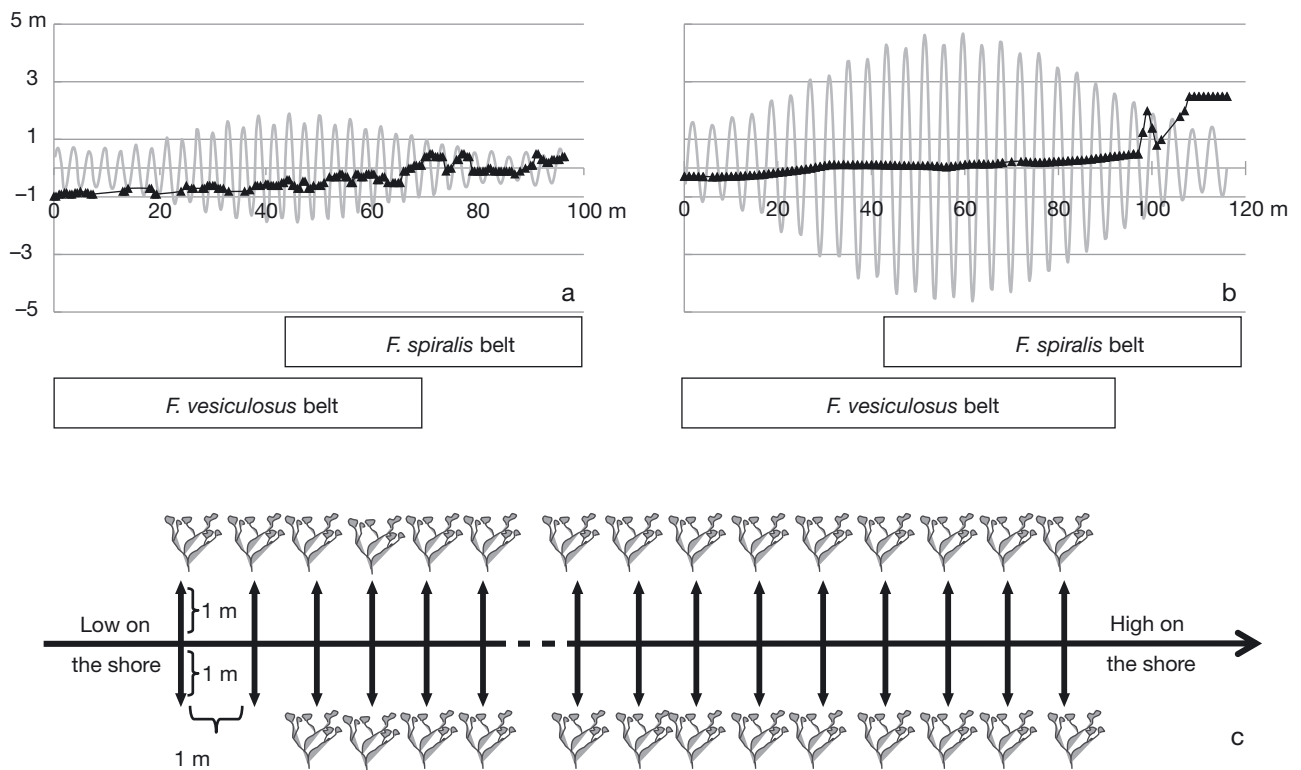


Fig. 1. Profiles of transects (in black) in (a) Viana, Portugal (tidal amplitude  $\approx 4$  m) and (b) Santec, France (tidal amplitude  $\approx 10$  m). Tidal phase and amplitude (in grey) were calculated for the nearby locations of Vigo and Roscoff, respectively, with the SHOM Web site ([www.shom.fr](http://www.shom.fr)). To determine the transect positions in relation to the mid-tide point, we noted, for at least 2 distinct points of the transects, the time at which they were reached by the rising tide. (c) Sampling design: along a transect from low to high shore, 2 individuals of the *Fucus* genus were taken at 1 m to the left and 1 m to the right, at every meter along the transect, without selection of morphotype or species

cover with the presence of small rolling stones, while in Viana, the shore is mainly composed of bedrock. The less stable topography in Santec may explain the higher intermixing of species along the intertidal succession in comparison with Viana. Individuals were sampled along a vertical transect (Fig. 1a,b) from the lower limit of *Fucus vesiculosus* belt to the higher limit of *F. spiralis* belt, by collecting 2 individuals of *Fucus* spp. (no *a priori* species or morphotype selection in order to avoid subjective biases) at every meter along the transect: one at 1 m to the left and one at 1 m to the right (Fig. 1c). Transects were sampled in 2005 in Portugal ( $l = 83$  m,  $n = 162$ ) and in 2006 in France ( $l = 106$  m,  $n = 199$ ). Vegetative tips (2 to 3 for each ind.) were stored in silica crystals for molecular analyses, and at least 2 receptacles (fertile zones) per individual were taken to determine the sexual phenotype. The elevation of the transect was determined by taking the hour of immersion of at least 2 distinct points. At Santec, shore height was determined every 5 m with a clinometer. In addition, relative heights of individuals sampled on rocks were measured. On the rocky shore of Viana, all individual relative heights were noted.

Finally, the median height of each taxon was calculated in order to define the mean emersion time during the year (based on the SHOM database [[www.shom.fr](http://www.shom.fr)] for Roscoff and Vigo, the closest station 60 km north from Viana for which information was available in the SHOM database in 2006).

#### DNA extraction, PCR reaction and genotyping.

DNA for genotyping was extracted from ca. 4 mg of dried tissue using the Nucleospin® Multi-96 plant kit (Macherey-Nagel) according to the manufacturer's protocol and diluted 1:250. Polymerase chain reactions (PCR) on a MJ Research PTC200 thermocycler and electrophoresis of PCR products on a automated DNA sequencer (Li-Cor 4200) were performed for the 7 microsatellite loci L20, L38, L94, L58, L78, and *fsp1*, *fsp2*, as described, respectively, in Engel et al. (2003) and Perrin et al. (2007).

**Genetic analyses.** Estimations of occurrence and frequency of null alleles (Flt) were performed using Micro-checker (Van Oosterhout et al. 2004, 2006) and based on the algorithm of Van Oosterhout et al. (2006). Population genetics parameters were estimated using Genetix software (Belkhir et al. 2004) and Fstat

(Goudet 1995). Assignment of individuals to species and detection of hybrids was performed with a model-based genetic admixture analysis implemented in Structure software (Pritchard et al. 2000). This software uses a Bayesian method to identify clusters of genetically similar individuals based on their multilocus genotypes by creating groups within which Hardy-Weinberg and linkage disequilibrium are minimized. Individuals are assigned to  $K$  different clusters (populations); it creates and detects admixed individuals, possibly resulting from recent hybridization and/or introgression of these clusters. Since inbreeding and selfing may induce linkage disequilibrium among loci and Hardy-Weinberg disequilibrium, which may not be suitable for assignment tests, analyses were also performed with InStruct (Gao et al. 2007), which takes into account the possibility of selfing, and results from both were compared. Analyses were run assuming different numbers of parental populations from  $K = 2$  to  $K = 5$ , with 10 iterations for each assumed  $K$ . A burn-in of 100 000 repetitions and a run length of 1 000 000 were used. To avoid potentially confounding geographic structure, analyses of transects were carried out separately for each region and year. Individuals were then assigned to each cluster according to  $q_{ii}$ , the proportion of individual genome assigned to each taxon. An individual was considered to be a hybrid when  $q_{2i}$  (the proportion of genome assigned to the second taxon)  $\geq 0.1$ . Due to the presence of *Fucus serratus* in the French transect, these individuals were taken into account for the assignment of individuals from France to clusters, but not in the latter analyses.

After removal of genetically intermediate individuals from the analysis we calculated for each cluster in each region the mean number of alleles, the averaged observed heterozygosity ( $H_o$ ) and the average non-biased expected heterozygosity ( $H_e$ ) using the Fstat software (Goudet 1995). Allele frequencies were visualized with the R-package MsatAllele\_1.0 (Alberto 2009).  $F_{ST}$  were calculated between all pairs of populations using Genetix software (Belkhir et al. 2004). Four levels of comparison were thus considered: intraspecific and intraregional, intraspecific and interregional, interspecific and intraregional, and interspecific and interregional. These data were summarized and statistically tested with a principal component analysis (PCA) were performed using PCA-GEN software (version 1.2; Goudet 1999). The statistical significance associated with each axis was calculated over 1000 randomizations. All individuals with missing data at one or more loci were excluded. To analyze the mating system, fixation indices ( $F_{IS}$ ; Weir & Cockerham 1984) were calculated over all loci and for each locus within each population using Fstat software version 1.2 (Goudet 1995). Heterozygote deficiencies and excess

were tested using 10000 permutations of alleles among individuals within each population. Selfing rates among populations were also inferred with InStruct via a model detailed in Gao et al. (2007) and by a multilocus method implemented in the RMES software of David et al. (2007).

## RESULTS

### Genotyping

Individual genotypes were determined at 7 microsatellite loci in 361 individuals, of which 24 individuals were excluded from the analysis because amplification failed for at least one locus. All 7 loci showed substantial variability with 9 to 16 alleles per locus and a mean  $H_o$  ranging from 0.19 to 0.26 in France and from 0.09 to 0.23 in Portugal, depending on the locus (data not shown). Null alleles were detected for 2 loci (L20 and fsp2) and occasionally for fsp1 (Table 1), with  $F_{II}$  varying from 0.07 to 0.29, although these estimations may be biased (overestimated) because of the high inbreeding rate in *Fucus spiralis*.

### Cluster analysis

Assigning individuals to genetic clusters according to their multilocus genotype without *a priori* indication of the number of clusters ( $K$ ) or individual species identity revealed clusters that appear to correspond to the species known to occur in the area, *Fucus spiralis*, *F. vesiculosus*, and, in France, also *F. serratus*. However, contrary to our expectation, *F. spiralis* was divided into 2 distinct genetic clusters in structure analyses resulting in higher probabilities for values of  $K$  that consider 2 clusters for *F. spiralis* ( $K = 3$  in Portugal and  $K = 4$  in France, where the species *F. serratus* was also sampled). Since a high rate of selfing is suspected in *F. spiralis*, individual assignment was also performed with InStruct, which eliminates the assumption of Hardy-Weinberg equilibrium within clusters. Since assignment of individuals was consistent between both methods, only InStruct results are shown in Fig. 2.

Individuals were classified into 3 (Portugal) or 4 (France) distinct genetic clusters, and they were considered as intermediate when at least 10% of their genome was assigned to a second cluster. For the sample from Portugal, 78 individuals were assigned to *Fucus vesiculosus*, 30 to the first cluster of *F. spiralis*, 19 to the second cluster of *F. spiralis*, and 20 individuals were classified as intermediates, 15 between *F. vesiculosus* and the first cluster of *F. spiralis* and 5 between *F. vesiculosus* and the second cluster of *F. spiralis*.

Table 1. Summary of genetic diversity within identified clusters.  $H_e$ : non-biased expected heterozygosity;  $H_o$ : observed heterozygosity,  $F_{IS}$ , and frequency (Fll) of null allele per locus and population. Significant values ( $p < 0.05$ ) are indicated in **bold**, –: not possible to calculate  $F_{IS}$ .  $H_e$  and  $H_o$  averaged over loci are given for each genetic cluster

Cluster	Region	n		L20	L38	L58	L78	L94	Fsp1	Fsp2
<i>Fucus vesiculosus</i>	Portugal	78	$H_e$	0.37	0.64	0.38	0.67	0.59	0.70	0.58
			$H_o$	0.24	0.54	0.46	0.67	0.56	0.69	0.21
			Fll	<b>0.13</b>	0.08	0.00	0.00	0.00	0.00	<b>0.29</b>
			$F_{IS}$	<b>0.35</b>	0.15	−0.23	0.01	0.05	0.02	0.65
	France	84	$H_e$	0.85	0.78	0.71	0.80	0.60	0.84	0.65
			$H_o$	0.74	0.77	0.63	0.84	0.57	0.79	0.56
			Fll	<b>0.07</b>	0.00	0.00	0.00	0.00	0.00	<b>0.08</b>
			$F_{IS}$	<b>0.13</b>	0.01	0.13	−0.05	0.04	0.06	<b>0.14</b>
<i>F. spiralis</i> -Low	Portugal	30	$H_e$	0.00	0.03	0.00	0.22	0.07	0.03	0.10
			$H_o$	0.00	0.03	0.00	0.13	0.03	0.03	0.03
			Fll	0.00	0.00	0.00	0.00	0.00	0.00	<b>0.18</b>
			$F_{IS}$	−	−	−	<b>0.39</b>	<b>0.50</b>	−	0.66
	France	50	$H_e$	0.04	0.00	0.02	0.00	0.04	0.28	0.00
			$H_o$	0.00	0.00	0.02	0.00	0.00	0.02	0.00
			Fll	0.00	0.00	0.00	0.00	0.00	0.31	0.00
			$F_{IS}$	1.00	−	−	−	<b>1.00</b>	<b>0.92</b>	−
<i>F. spiralis</i> -High	Portugal	19	$H_e$	0.00	0.10	0.00	0.10	0.05	0.10	0.05
			Ho	0.00	0.05	0.00	0.05	0.05	0.11	0.05
			Fll	0.00	0.00	0.00	0.00	0.00	0.00	0.00
			$F_{IS}$	−	<b>0.50</b>	−	<b>0.50</b>	−	−0.01	−
	France	19	$H_e$	0.00	0.00	0.00	0.00	0.00	0.00	0.51
			$H_o$	0.00	0.00	0.00	0.00	0.00	0.00	0.26
			Fll	0.00	0.00	0.00	0.00	0.00	0.00	0.21
			$F_{IS}$	−	−	−	−	−	−	<b>0.49</b>

(Fig. 2). Selfing rates, inferred with InStruct and RMES, were consistent between methods and were, respectively, 0.8 and 0.9 for the first cluster of *F. spiralis* and 0.8 and 0.9 for the second cluster. For the sample from France, individuals were assigned as 84 *F. vesiculosus*, 50 to the first cluster of *F. spiralis*, 19 to the second cluster of *F. spiralis*, 17 to *F. serratus*, and 20 intermediates, 6 between *F. vesiculosus* and the first cluster of *F. spiralis*, 4 between *F. vesiculosus* and the second cluster of *F. spiralis*, 8 between *F. vesiculosus* and *F. serratus* and 2 between *F. serratus* and *F. spiralis* (Fig. 2). In this case, estimation of selfing rate was not possible due to the lack of polymorphism for the 2 *F. spiralis* clusters. Given that *F. serratus* was not present in the transect of Portugal, the remaining analyses will discuss mainly the other clusters identified.

Allelic diversity was always greater in *Fucus vesiculosus* than in *F. spiralis*, whatever the locus considered (Table 1, Fig. 3). Among the 77 alleles recorded over the 7 loci and the 3 different clusters, the majority (75) were retrieved within *F. vesiculosus*, whereas only 14 were observed in the first cluster of *F. spiralis* and even fewer (10) in the second (Fig. 3). Many alleles (54) were thus diagnostic of *F. vesiculosus* because they were never observed in the *F. spiralis* clusters. In contrast, only one allele (allele 157 at locus L94) was diagnostic of the first cluster of *F. spiralis* and only one allele (allele 198, locus Fsp2) was diagnostic of the second.

Two loci (L20 and L78) were diagnostic between the 2 clusters of *F. spiralis*. Two loci (L38 and L58) were fixed for the same allele in all *F. spiralis* populations, and the 3 remaining loci allowed differentiation between Portugal and France within clusters (Fig. 3). The PCA summarizes the information given by the 7 loci (Fig. 4) and indicates a clear distinction between the 3 clusters, regardless of the regional origin of the populations. Indeed, the global  $F_{ST}$  (0.4) is highly significant ( $p = 0.001$ ) with 2 significant axes according to the broken-stick. The first axis, containing 56 % of the total inertia, segregates *F. vesiculosus* from the 2 *F. spiralis* clusters and the second axis, which explains 24 % of the total inertia, segregates the 2 clusters of *F. spiralis*. Indeed, concerning *F. vesiculosus*,  $F_{ST}$  between clusters ranged from 0.40 to 0.56, while it only reached 0.14 within cluster-among regions. On the other hand,  $F_{ST}$  between clusters of *F. spiralis* were much higher (0.83 to 0.90), but were also high within clusters-among regions (0.80 for *F. spiralis*-Low and 0.43 for *F. spiralis*-High). All  $F_{ST}$  values were highly significant.

#### Cluster distribution along the vertical shore gradient

The median height of the 3 clusters on the shore is clearly different (Fig. 5). In the transect sampled in Portugal, there is a clear gradient in the distribution of the



3 clusters, with *Fucus vesiculosus* occurring lower on the shore, the first cluster of *F. spiralis* (*F. spiralis*-Low) occupying the middle part of the shore, and the second cluster of *F. spiralis* (*F. spiralis*-High) the higher part. In

the transect from France, the situation is more complex, as *F. spiralis*-Low was found mostly admixed with *F. vesiculosus*, while there was no overlap in the distribution of the 2 types of *F. spiralis*. Since differences in

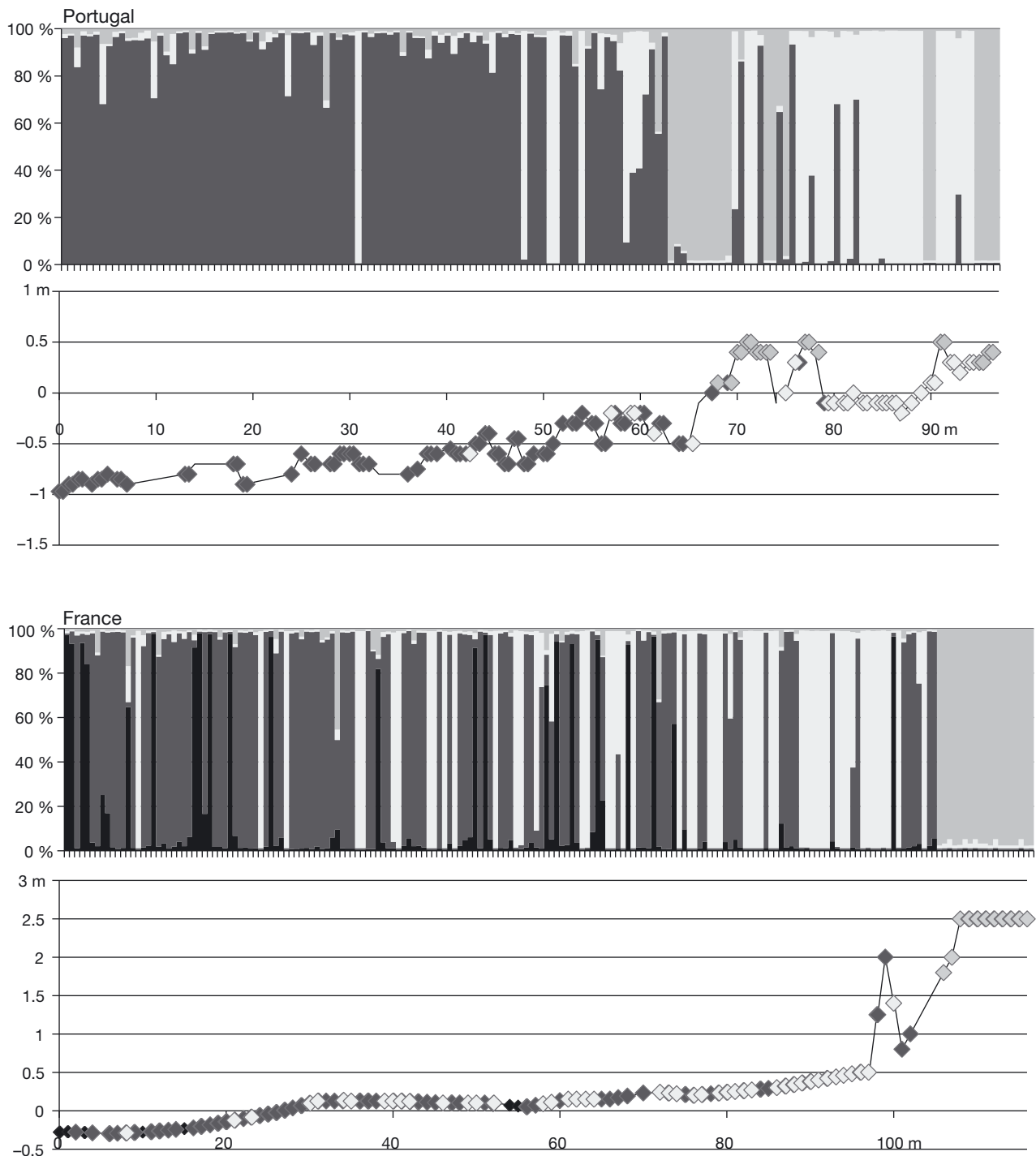


Fig. 2. Bayesian analysis with InStruct software for the different transects. Each vertical bar represents a different individual. Each shade represents  $q_{ti}$  the proportion of individual genome assigned to each taxon; from black to lightest grey: *Fucus serratulus*, *F. vesiculosus*, *F. spiralis*-High, and *F. spiralis*-Low. Individuals are ordered from the lower to the upper shelf. Under each Bayesian analysis output figure, the partitioning of each cluster is represented on the transect profile

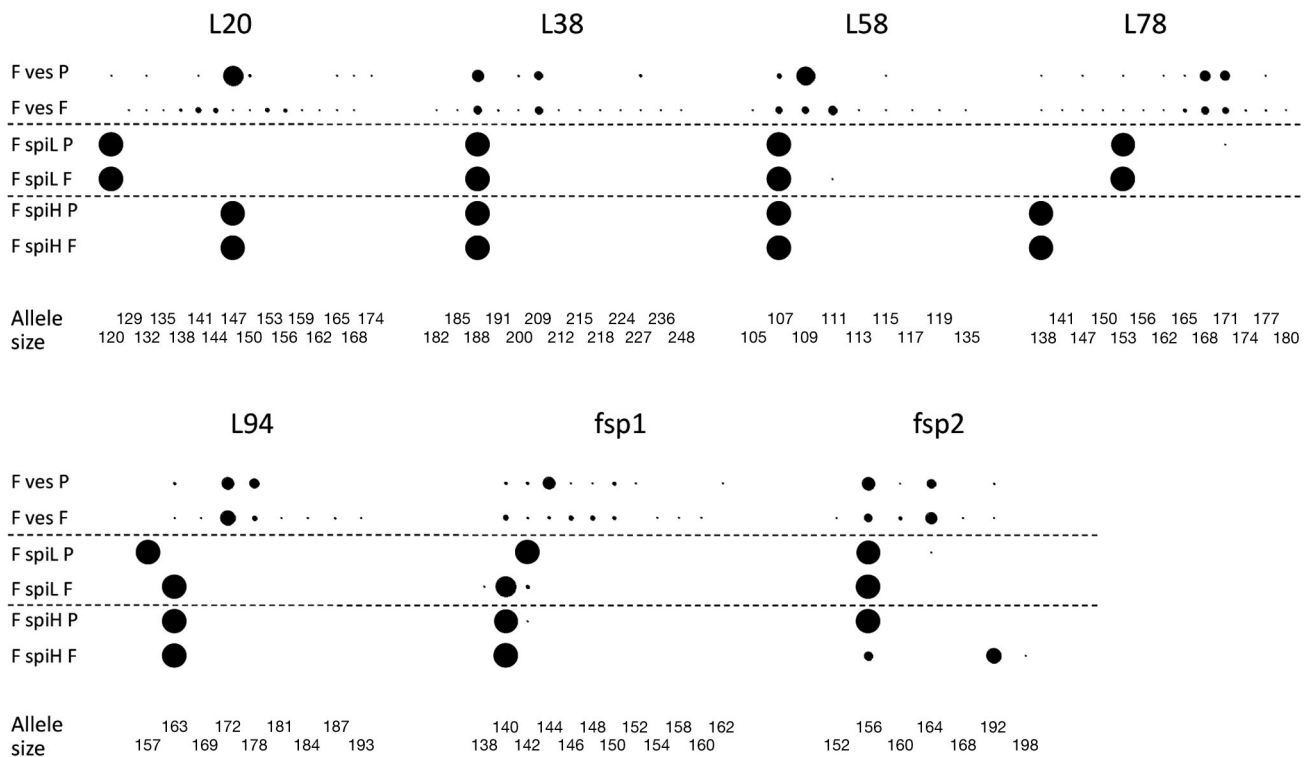


Fig. 3. Allele frequencies at 7 microsatellite loci calculated for each cluster in both regions. Numbers on the x-axis are allele sizes in base pairs for each locus. Each circle indicates presence of corresponding allele; diameter of circle represents frequency of that allele in the species. Fves = *Fucus vesiculosus*; Fspi = *F. spiralis*, H = High, L = Low, P = Portugal, F = France. Allele size notation corresponds to Perrin et al. (2007). Allelic frequencies table is provided in Supplement 1 at [www.int-res.com/articles/suppl/m405p163\\_app.pdf](http://www.int-res.com/articles/suppl/m405p163_app.pdf)

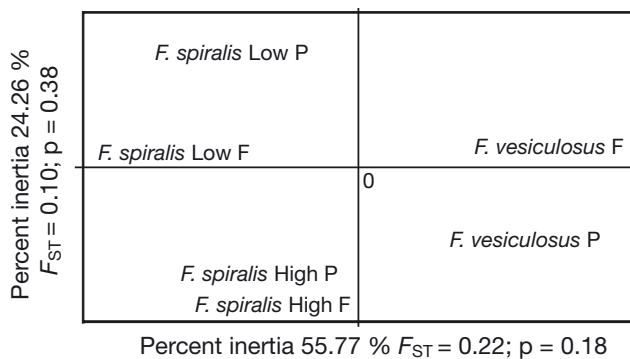


Fig. 4. Principal component analysis (PCA) based on 7 microsatellite loci conducted with PCA-Gen software (Goudet 1999). Axis 1, separating *Fucus vesiculosus* from *F. spiralis*, represents 55.8 % of total inertia, and Axis 2, separating *F. spiralis*-High and *F. spiralis*-Low, represents 24.3 % of the total inertia.  $p$  values for  $F_{ST}$  are given after 1000 randomizations

shore height reflect differences in selective pressures associated with emersion-dependent stress, for each cluster and each transect we computed the mean percentage of emersion time corresponding to the median altitude (Fig. 5). The results show that the differences in emersion time can explain the spatial segregation

between *F. vesiculosus* and *F. spiralis* and differences between *F. spiralis*-Low and *F. spiralis*-High. Individuals of *F. vesiculosus* can spend up to 50 % of their time out of water in Brittany but only 30 % in Portugal. Individuals of *F. spiralis*-Low were emerged for at least 50 % of the year, whereas those of *F. spiralis*-High were able to survive in areas exposed to air more than 60 % of the year.

Finally, after definition of the 2 different genetic clusters *F. spiralis*-Low and *F. spiralis*-High, we noted in the field that individuals in the areas where these 2 genetic entities occur showed some morphological differences, allowing us to identify the *F. spiralis*-Low morphotype from the *F. spiralis*-High morphotype in the 2 geographic regions (Fig. 6). Although morphological phenotypic traits were not quantified for the sampled individuals, qualitative observations of the sampled individuals along the transect revealed that in general those that were later classified as *F. spiralis*-High were generally smaller, bushy, with dichotomous ramifications, and bearing no rim around the receptacles, corresponding to the typical *F. spiralis* morphology and formerly described as the morphotype *F. spiralis* var *typicus* Böergesen, 1909. In contrast,



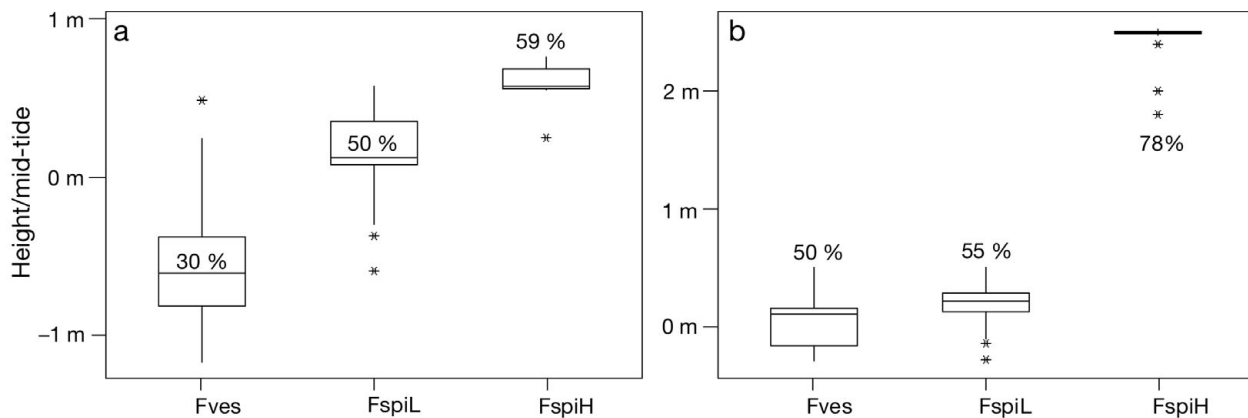


Fig. 5. Altitude of the different clusters in relation to the mid-tide point in (a) Viana do Castelo, Portugal and (b) Santec, France. Boxes represent interquartile ranges; internal horizontal bars represent the median; whiskers represent  $1.5 \times$  the interquartile range and asterisks are given for outliers. Medians are  $-0.61$  m for *Fucus vesiculosus* (Fves),  $0.13$  m for *F. spiralis*-Low (FspiL), and  $0.58$  m for *F. spiralis*-High (FspiH) in Portugal, and they are respectively  $0.10$ ,  $0.21$ , and  $2.50$  m in France. %: mean percentage of time that the population spends emerged during the year

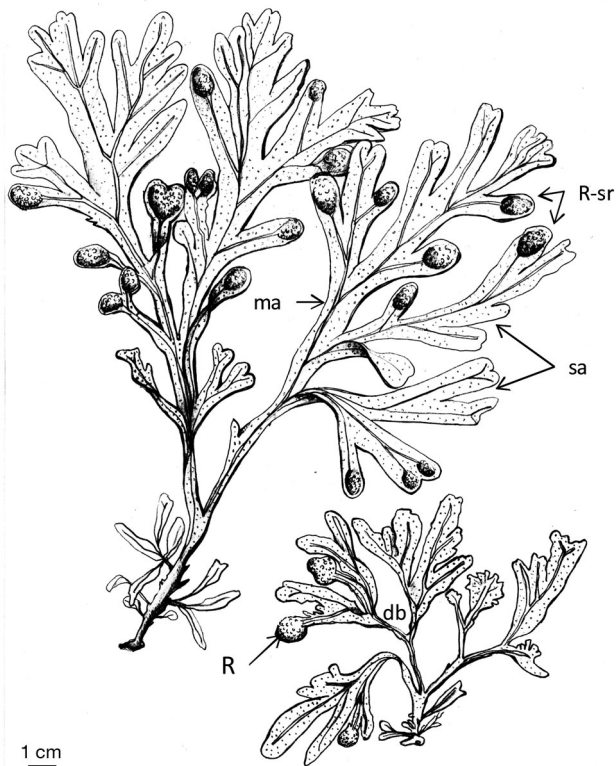


Fig. 6. The 2 morphotypes encountered in the sampling area in Santec, France. On the left *Fucus spiralis*-Low, which corresponds to the morphology of *F. spiralis* var. *platycarpus*; on the right *F. spiralis*-High, the typical *F. spiralis* morphology. R: receptacle without sterile rime; R-sr: receptacle with sterile rime; db: dichotomic branching; ma: main axis; sa: secondary axis. The same 2 morphotypes are encountered in Viana do Castelo

*F. spiralis*-Low genotypes were identified in areas where the existing morphotypes are longer and did not show a dichotomous branching pattern: each branch gives rise to one main thallus axis and one smaller side ramification. In addition, individuals generally exhibit large rims around the reproductive structures (receptacles). This morphology appears to correspond to the morphotype described as *F. spiralis* var. *platycarpus* Batters 1902.

## DISCUSSION

By classifying geographically sympatric individuals exclusively using genetic markers, we recovered not only the previously known species but also novel entities within species. These different genetic entities co-occur on the same shores but are vertically distributed. From the lower to the higher part of the shore, a succession of 3 to 4 well-defined genetic clusters corresponding to *Fucus serratus*, *F. vesiculosus*, *F. spiralis*-Low, and *F. spiralis*-High were present over  $<100$  m. Even if the distribution of genotypes was well-correlated with the shore level, the distribution of these genetic entities was not totally disjunct, and genetic admixture was detected where individuals from the different entities occurred in sympatry. In some respects, the *Fucus* species complex could be interpreted as a succession of different ecological species along a vertical gradient of contrasting habitats. Such ecotype differences that are strongly correlated to different habitat type along the shore were extensively studied in *Littorina saxatilis* (see for critical review Butlin et al. 2008). In this marine gastropod, repeated

experimental work has demonstrated that strong divergent natural selection acting across an environmental gradient is the mechanism that maintains ecotypic divergence in spite of ongoing gene flow (Rolán-Alvarez et al. 1997, Cruz et al. 2004a,b). However, demonstrating speciation with gene flow is far from easy due to the difficulty of separating the effects of time since divergence from gene flow (but see review of Nosil 2008). In this section, we discuss whether the shared genetic variation between the different *Fucus* clusters is simply a remnant of ancestral variation or if it is due to gene exchange after the populations started to separate.

It is now widely accepted that species in the *Fucus* genus experienced recent radiation (Leclerc et al. 1998, Serrão et al. 1999, Coyer et al. 2006). In recent studies, authors have tried to date these splitting events; by inferring a molecular clock, Hoarau et al. (2007) recently suggested a divergence time of 10 to 16 million yr between *Fucus* and *Ascophyllum nodosum* and of 2.3 to 5.5 million yr within *Fucus* and Muhlin & Brawley (2009), using the same molecular clock, dated the divergence between haplotypes of *F. vesiculosus* between 35 000 and 65 000 yr ago, while with microsatellites, Pereyra et al. (2009) estimated the time since divergence of *F. radicans* and *F. vesiculosus* around 400 yr ago (125 to 2475 yr ago) using a coalescent approach. As mentioned by Coyer et al. (2006) it is not trivial to find a consensus for the species concept within the *Fucus* genus because of intraspecific morphological variation and frequent hybridization among taxa. However, using nuclear (Serrão et al. 1999) or mtDNA (Coyer et al. 2006) phylogenies, these authors have defined 2 major lineages, the one including *F. serratus* being clearly divergent from the second containing the other 3 genetic entities recognized in this study (i.e. *F. vesiculosus*/*F. spiralis*). Thus, these 2 lineages result from an early divergence. As *F. serratus* is well-separated from the *F. vesiculosus*/*F. spiralis* complex, we suggest that although there may be some gene flow upon secondary contact, speciation was essentially allopatric. In contrast, previous phylogenies were unable to discriminate among *F. spiralis* and *F. vesiculosus*, and Coyer et al. (2006) proposed that *F. spiralis* might be still in the process of speciation. First, we will consider the dichotomy *F. vesiculosus*/*F. spiralis* and then we will discuss which factors may have lead to the separation of the 2 entities of *F. spiralis*.

### Divergence between *Fucus vesiculosus* and *F. spiralis*

Contrary to previous phylogenies, recent population genetic analyses (Wallace et al. 2004, Billard et al. 2005, Engel et al. 2005) clearly support the separation

of *Fucus vesiculosus* and *F. spiralis* into distinct genetic entities independent of geography. Despite our results that reveal *F. spiralis* to be composed of 2 genetically distinct entities, our analysis supports the previous interpretation since differentiation between *F. vesiculosus* and *F. spiralis* complex is higher than between *F. spiralis*-Low and *F. spiralis*-High. In contrast with previous studies, we analyzed individuals randomly sampled along vertical transects on the shore in order to obtain non-biased estimates of the degree of introgression between species. Even without the prior morphological choice of species, our results confirmed that the dioecious, vesicle-bearing *F. vesiculosus* forms a genetic cluster distinct from both hermaphroditic *F. spiralis*-Low and -High, with limited evidence for hybridization or ecological speciation. We suggest that, rather than parallel speciation, *F. vesiculosus* has originated just once and has spread throughout its range probably after the last glacial maximum (LGM) (Engel et al. 2005). The maintenance of the 2 species despite the external fertilization and their overlapping distribution on the shore might have been facilitated by selfing in *F. spiralis* but also by limited dispersal capacities and differential timing of gamete release in both species (Serrão et al. 1996, Ladah et al. 2008).

### Divergence between *Fucus spiralis*-Low and *F. spiralis*-High

Within *Fucus spiralis*, different morphotypes were described in the early twentieth century: *F. spiralis* var *platycarpus* (Thuret) Batters 1902 and *F. spiralis* var *typicus* (Börgeresen 1909) (see Hamel 1939), however these designations are rarely used in the current literature (but see Pérez-Ruzafa et al. 1993, Cairrão et al. 2004). Our study shows that at the genetic level, 2 clusters can be distinguished, corresponding to these early varietal designations, and that these occur at different heights on the shore. In marine macroalgae, and in particular in *Fucus*, the distinction of related species based on morphology is often problematic because of phenotypic variation, including intermediate phenotypes, which can lead to the misidentification of individuals (Coleman & Muhlin 2008). In this context, the different morphotypes observed in *F. spiralis* could simply be due to phenotypic plasticity in relation to, for example, different levels of exposure to emersion stress. However, the genetic analysis of *F. spiralis* from Portugal and France showed that the different populations of *F. spiralis* clustered according to their morphotypes rather than their geographical vicinity, which supports genetic isolation rather than phenotypic plasticity.

Interestingly, the contrasting patterns exhibited by the different loci within *Fucus spiralis* suggest a history

of divergence quite different from the history between *F. vesiculosus* and *F. spiralis* complex. Specifically, 3 kinds of response were observed: (1) L38 and L58 are fixed or nearly fixed for one allele in the entire *F. spiralis* complex; (2) In contrast, L20 and L78 discriminates between the 2 *F. spiralis*-Low and *F. spiralis*-High clusters, since they are fixed for different alleles; (3) Finally, 3 loci (L94, fsp1, and fsp2) reveal regional divergence either within *F. spiralis*-Low (at L94 and fsp1) or within *F. spiralis*-High (at fsp2), suggesting geographical differentiation within clusters. This discordant pattern between different loci could correspond to the effect of genetic drift on neutral loci, which is surely facilitated in these 2 entities by the high level of selfing leading to the rapid fixation of alleles. Given the clearly different emersion times the 2 clusters have to face (50 to 55% for *F. spiralis*-Low vs. 59 to 78% for *F. spiralis*-High) a possible scenario for the existence of the 2 clusters *F. spiralis*-High and *F. spiralis*-Low would be that, like for *Littorina saxatilis* (Quesada et al. 2007), parallel evolution of similar morphotypes inhabiting an equivalent area of the shore is occurring in the different regions, driven by ecological selective pressures, for example desiccation stress. As for *F. radicans* and *F. vesiculosus*, for which clonality may have acted as an isolating system and led to a rapid speciation in a marginal environment such as the Baltic Sea (Pereyra et al. 2009), in the case of *F. spiralis*, reproductive isolation between morphotypes may be reinforced primarily by selfing, preventing gene flow between *F. spiralis* entities on the one hand and accelerating the fixation of mutations on the other (Wright et al. 2008).

Based on our results, 2 different scenarios seem to be involved in the evolution of the 3 clusters, *Fucus vesiculosus*, *F. spiralis*-Low, and *F. spiralis*-High. First, only one speciation event seems to have occurred, in allo-, para-, or sympatry cannot be known. Reproductive isolation, even if not complete, may have been maintained by aspects of reproductive ecology (for example, timing of gamete release) that limit interspecific gamete encounters. Second, parallel evolution of 2 'morphotypes' driven by natural selection and facilitated by a high selfing rate seems to be ongoing in at least these 2 geographically distant regions of Portugal and France. Additional studies focusing on the case of *F. spiralis* are thus urgently required to confirm or reject this scenario. Whatever the case, much may be learned from a re-examination of the older literature in which the typical *F. spiralis* morphotype was distinguished from the morphologically distinct *F. spiralis* var *platycarpus* (Thuret) Batters 1902, which is shown here to correspond to a distinct genetic entity. In conclusion, the genus *Fucus* is a model of ancestral and ongoing evolutionary divergence at various levels and

at different time scales. It originally diverged into 2 clades (Coyer et al. 2006, Serrão et al 1999), one including taxa that are more tolerant to emersion stresses (including *F. spiralis* and *F. vesiculosus*) and another composed of taxa that have low tolerance to emersion. Later, within the 'stress tolerant' clade, a hermaphroditic vs. dioecious divergence in reproductive mode might have helped reinforce the divergence between the co-occurring species *F. spiralis* and *F. vesiculosus*, where the former, a selfing hermaphrodite, may be more able to maintain locally adaptive traits to life on the high shore. In the present study, we have discovered that at a yet more recent time scale, within a selfing *F. spiralis* complex, divergence between 2 genetic entities occurred, with spatial segregation along the intertidal zone suggesting that differences in selective traits might have contributed to their divergence.

**Acknowledgements.** This research was supported by a doctoral grant from FCT, Portugal, and European Social Fund to E.B. Additional supports from the Networks of Excellence 'Marine Genomics' (Algal Node) and 'MarBef' (GBirm), and from the 'ARCUS' program of the French Ministry of Foreign Affairs and FCT programs co-funded by FEDER. Thanks to S. Arnaud-Haond and J. Hollander for their comments on earlier versions of the manuscript, to J. M. Neiva and to all people having helped in the field: M. Billard, C. Broudin, C. R. Engel, B. Faure, S. Le Cam, D. Muths, S. Plouviez, F. Rigal, D. Roze, G. Schaal, and M. Voisin. Special thanks to V. Valéro for the help in the drawing of the 2 *F. spiralis* entities.

#### LITERATURE CITED

- Alberto F (2009) MsatAllele\_1.0: an R package to visualize the binning of microsatellite alleles. *J Hered* 100:394–397
- Belkhir K, Borsa P, Chikhi L, Raufaste N, Bonhomme F (2004) GENETIX 4.05, logiciel sous Windows TM pour la génétique des populations. Laboratoire Génome, Populations, Interactions, CNRS UMR 5000, Université de Montpellier II, Montpellier, France
- Billard E, Serrão EA, Pearson GA, Engel CR, Destombe C, Valero M (2005) Analysis of sexual phenotype and prezygotic fertility in natural populations of *Fucus spiralis*, *F. vesiculosus* (Fucaceae, Phaeophyceae) and their putative hybrids. *Eur J Phycol* 40:397–407
- Butlin RK, Galindo J, Grahame JW (2008) Sympatric, parapatric or allopatric: the most important way to classify speciation? *Phil Trans R Soc B* 363:2997–3007
- Cairrão E, Couderchet M, Soares AMVM, Guilhermino L (2004) Glutathione-S-transferase activity of *Fucus* spp. as a biomarker of environmental contamination. *Aquat Toxicol* 70:277–286
- Chapman ARO (1990) Competitive interactions between *Fucus spiralis* L and *Fucus vesiculosus* L (Fuciales, Phaeophyta). *Hydrobiologia* 204:205–209
- Chapman ARO (1995) Functional ecology of furoid algae — 23 years of progress. *Phycologia* 34:1–32
- Chapman ARO, Johnson CR (1990) Disturbance and organization of macroalgal assemblages in the northwest Atlantic. *Hydrobiologia* 192:77–121
- Coleman MA, Brawley SH (2005) Spatial and temporal vari-

- ability in dispersal and population genetic structure of a rockpool alga. *Mar Ecol Prog Ser* 300:63–77
- Coleman MA, Muhlin JF (2008) Patterns of spatial variability in the morphology of sympatric fucoids. *Northeast Nat* 15:111–122
- Connell JH (1972) Community interactions on marine rocky intertidal shores. *Annu Rev Ecol Syst* 3:169–192
- Coyer JA, Peters AF, Hoarau G, Stam WT, Olsen JL (2002) Hybridization of the marine seaweeds, *Fucus serratus* and *Fucus evanescens* (Heterokontophyta: Phaeophyceae) in a 100-year-old zone of secondary contact. *Proc Biol Sci* 269:1829–1834
- Coyer JA, Hoarau G, Oudot-Le Secq MP, Stam WT, Olsen JL (2006) A mtDNA-based phylogeny of the brown algal genus *Fucus* (Heterokontophyta; Phaeophyta). *Mol Phylogenet Evol* 39:209–222
- Coyer JA, Hoarau G, Stam WT, Olsen JL (2007) Hybridization and introgression in a mixed population of the intertidal seaweeds *Fucus evanescens* and *F. serratus*. *J Evol Biol* 20:2322–2333
- Cruz R, Carballo M, Conde-Padín P, Rolán-Alvarez E (2004a) Testing alternative models for sexual isolation in natural populations of *Littorina saxatilis*: Indirect support for by-product ecological speciation? *J Evol Biol* 17:288–293
- Cruz R, Vilas C, Mosquera J, García C (2004b) Relative contribution of dispersal and natural selection to the maintenance of a hybrid zone in *Littorina*. *Evolution* 58:2734–2746
- David P, Pujol B, Viard F, Castella V, Goudet J (2007) Reliable selfing rate estimates from imperfect population genetic data. *Mol Ecol* 16:2474–2487
- Davison IR, Pearson GA (1996) Stress tolerance in intertidal seaweeds. *J Phycol* 32:197–211
- Dring MJ, Brown FA (1982) Photosynthesis of intertidal brown algae during and after periods of emersion: a renewed search for physiological causes of zonation. *Mar Ecol Prog Ser* 8:301–308
- Engel CR, Brawley SH, Edwards KJ, Serrão E (2003) Isolation and cross-species amplification of microsatellite loci from the fucoid seaweeds *Fucus vesiculosus*, *Fucus serratus* and *Ascophyllum nodosum* (Heterokontophyta, Fucaaceae). *Mol Ecol Notes* 3:180–182
- Engel CR, Daguin C, Serrão EA (2005) Genetic entities and mating system in hermaphroditic *Fucus spiralis* and its close dioecious relative *F. vesiculosus* (Fucaaceae, Phaeophyceae). *Mol Ecol* 14:2033–2046
- Fitzpatrick BM, Fordyce JA, Gavrillets S (2008) What, if anything, is sympatric speciation? *J Evol Biol* 21:1452–1459
- Galindo J, Moran P, Rolan-Alvarez E (2009) Comparing geographical genetic differentiation between candidate and noncandidate loci for adaptation strengthens support for parallel ecological divergence in the marine snail *Littorina saxatilis*. *Mol Ecol* 18:919–930
- Gao H, Williamson S, Bustamante CD (2007) A Markov chain Monte Carlo approach for joint inference of population structure and inbreeding rates from multilocus genotype data. *Genetics* 176:1635–1651
- Gomez-Garreta A (2000) *Flora Phycologica Iberica*, Vol 1. Fucales. Servicio de Publicaciones, Universidad de Murcia, Spain
- Goudet J (1995) FSTAT (version 12): a computer program to calculate *F*-statistics. *J Hered* 86:485–486
- Goudet J (1999) PCA-GEN for Windows (version 1.2, August 1999), computer package for Windows which performs principal component analysis on gene frequency data. [www2.unil.ch/popgen/softwares/](http://www2.unil.ch/popgen/softwares/)
- Guiry MD, Guiry GM (2009) *AlgaeBase* world-wide electronic publication. National University of Ireland, Galway. [www.algaebase.org](http://www.algaebase.org)
- Hamel G (1939) *Phéophycées de France*. Wolf, Rouen
- Hawkins SJ, Hartnoll RG (1985) Factors determining the upper limits of intertidal canopy-forming algae. *Mar Ecol Prog Ser* 20:265–271
- Hey J (2006) Recent advances in assessing gene flow between diverging populations and species. *Curr Opin Genet Dev* 16:592–596
- Hoarau G, Coyer JA, Veldsink JH, Stam WT, Olsen JL (2007) Glacial refugia and recolonization pathways in the brown seaweed *Fucus serratus*. *Mol Ecol* 16:3606–3616
- Jonsson PR, Granhag L, Moschella PS, Aberg P, Hawkins SJ, Thompson RC (2006) Interactions between wave action and grazing control the distribution of intertidal macroalgae. *Ecology* 87:1169–1178
- Knip H (1925) Ueber *Fucus-Bastard*. *Flora* 118/119:331–338
- Ladach LB, Feddersen F, Pearson GA, Serrão EA (2008) Egg release and settlement patterns of dioecious and hermaphroditic fucoid algae during the tidal cycle. *Mar Biol* 155:583–591
- Leclerc MC, Barriel V, Lecointre G, De Reviers B (1998) Low divergence in rDNA ITS sequences among five species of *Fucus* (Phaeophyceae) suggests a very recent radiation. *J Mol Evol* 46:115–120
- Lubchenco J (1980) Algal zonation in the New England rocky intertidal community: an experimental analysis. *Ecology* 61:333–344
- Muhlin JF, Brawley SH (2009) Recent versus relic: discerning the genetic signature of *Fucus vesiculosus* (Heterokontophyta; Phaeophyceae) in the northwestern Atlantic. *J Phycol* 45:828–837
- Nosil P (2008) Speciation with gene flow could be common. *Mol Ecol* 17:2103–2106
- Pearson GA, Kautsky L, Serrão EA (2000) Recent evolution in Baltic *Fucus vesiculosus*: reduced tolerance to emersion stresses compared to intertidal (North Sea) populations. *Mar Ecol Prog Ser* 202:67–79
- Pearson GA, Lago-Leston A, Mota C (2009) Frayed at the edges: selective pressure and adaptive response to abiotic stressors are mismatched in low diversity edge populations. *J Ecol* 97:450–462
- Pereyra R, Bergström L, Kautsky L, Johannesson K (2009) Rapid speciation in a newly opened postglacial marine environment, the Baltic Sea. *BMC Evol Biol* 9:70
- Pérez-Ruzafa I, Gallardo T, Gómez-Cancio R (1993) Numerical taxonomy of some taxa of the genus *Fucus* in the Iberian Peninsula. *Hydrobiologia* 260/261:81–90
- Perrin C, Daguin C, Van De Vliet M, Engel CR, Pearson GA, Serrão EA (2007) Implications of mating system for genetic diversity of sister algal species: *Fucus spiralis* and *Fucus vesiculosus* (Heterokontophyta, Phaeophyceae). *Eur J Phycol* 42:219–230
- Pritchard JK, Stephens M, Donnelly P (2000) Inference of population structure using multilocus genotype data. *Genetics* 155:945–959
- Quesada H, Posada D, Caballero A, Moran P, Rolan-Alvarez E (2007) Phylogenetic evidence for multiple sympatric ecological diversification in a marine snail. *Evolution* 61:1600–1612
- Rolán-Alvarez E, Johannesson K, Erlandsson J (1997) The maintenance of a cline in the marine snail *Littorina saxatilis*: the role of home site advantage and hybrid fitness. *Evolution* 51:1838–1847
- Schluter D (2001) Ecology and the origin of species. *Trends Ecol Evol* 16:372–380
- Schluter D (2009) Evidence for ecological speciation and its



- alternative. *Science* 323:737–741
- Serrão E, Pearson G, Kautsky L, Brawley SH (1996) Successful external fertilization in turbulent environments. *Proc Natl Acad Sci USA* 93:5286–5290
- Serrão E, Alice LA, Brawley SH (1999) Evolution of the *Fucales* (Phaeophyceae) inferred from nrDNA-ITS. *J Phycol* 35:382–394
- Skene KR (2004) Key differences in photosynthetic characteristics of nine species of intertidal macroalgae are related to their position on the shore. *Can J Bot* 82:177–184
- Stomps TJ (1911) Etudes topographiques sur la variabilité des *Fucus vesiculosus* L. platycarpus Thur et *ceranoides* L. *Rec Inst Bot Léo Errera Bruxelles* 8: 326–377
- Takebayashi N, Morrell PL (2001) Is self-fertilization an evolutionary dead end? Revisiting an old hypothesis with genetic theories and a macroevolutionary approach. *Am J Bot* 88:1143–1150
- Underwood AJ (1979) The ecology of intertidal gastropods. *Adv Mar Biol* 16:111–210
- Van Oosterhout C, Hutchinson WF, Wills DPM, Shipley P (2004) MICRO-CHECKER: software for identifying and correcting genotyping errors in microsatellite data. *Mol Ecol Notes* 4:535–538
- Van Oosterhout C, Weetman D, Hutchinson WF (2006) Estimation and adjustment of microsatellite null alleles in nonequilibrium populations. *Mol Ecol Notes* 6:255–256
- Vernet P, Harper JL (1980) The costs of sex in seaweeds. *Biol J Linn Soc* 13:129–138
- Wallace AR, Klein AS, Mathieson AC (2004) Determining the affinities of salt marsh fucoids using microsatellite markers: evidence of hybridization and introgression between two species of *Fucus* (Phaeophyceae) in a Maine estuary. *J Phycol* 40:1013–1027
- Weir BS, Cockerham CC (1984) Estimating *F*-statistics for the analysis of population structure. *Evolution* 38:1358–1370
- Wright SI, Ness RW, Foxe JP, Barrett SCH (2008) Genomic consequences of outcrossing and selfing in plants. *Int J Plant Sci* 169:105–118

Editorial responsibility: Philippe Borsa,  
Montpellier, France

Submitted: May 11, 2009; Accepted: January 26, 2010  
Proofs received from author(s): April 23, 2010