



HAL
open science

Stereoselective differences in the cytochrome P450-dependent dealkylation and demethylenation of -methyl-benzodioxolyl-butanamine (MBDB, Eden) enantiomers

Markus R. Meyer, Frank T. Peters, Hans H. Maurer

► **To cite this version:**

Markus R. Meyer, Frank T. Peters, Hans H. Maurer. Stereoselective differences in the cytochrome P450-dependent dealkylation and demethylenation of -methyl-benzodioxolyl-butanamine (MBDB, Eden) enantiomers. *Biochemical Pharmacology*, 2009, 77 (11), pp.1725. 10.1016/j.bcp.2009.03.001 . hal-00493501

HAL Id: hal-00493501

<https://hal.science/hal-00493501>

Submitted on 19 Jun 2010

HAL is a multi-disciplinary open access archive for the deposit and dissemination of scientific research documents, whether they are published or not. The documents may come from teaching and research institutions in France or abroad, or from public or private research centers.

L'archive ouverte pluridisciplinaire **HAL**, est destinée au dépôt et à la diffusion de documents scientifiques de niveau recherche, publiés ou non, émanant des établissements d'enseignement et de recherche français ou étrangers, des laboratoires publics ou privés.

Accepted Manuscript

Title: Stereoselective differences in the cytochrome P450-dependent dealkylation and demethylation of *N*-methyl-benzodioxolyl-butanamine (MBDB, Eden) enantiomers

Authors: Markus R. Meyer, Frank T. Peters, Hans H. Maurer

PII: S0006-2952(09)00155-5
DOI: doi:10.1016/j.bcp.2009.03.001
Reference: BCP 10110

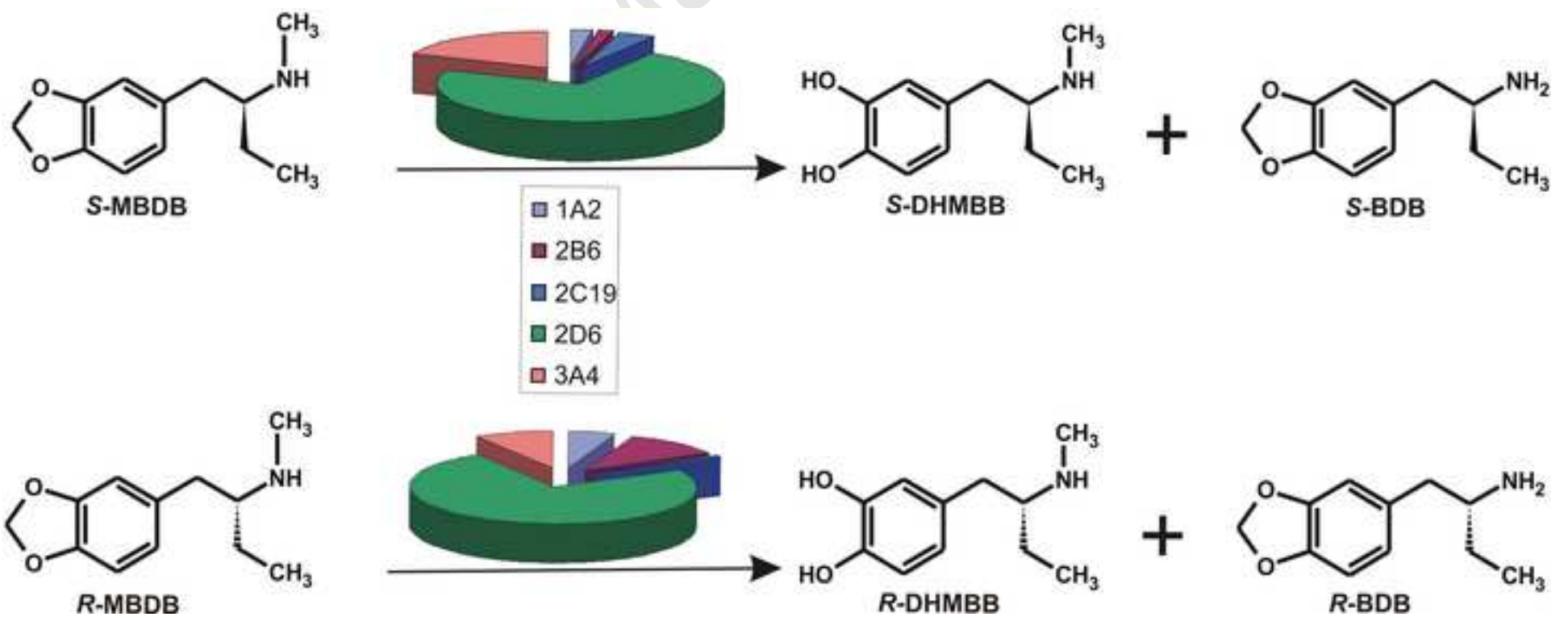
To appear in: *BCP*

Received date: 21-1-2009
Revised date: 25-2-2009
Accepted date: 3-3-2009

Please cite this article as: Meyer MR, Peters FT, Maurer HH, Stereoselective differences in the cytochrome P450-dependent dealkylation and demethylation of *N*-methyl-benzodioxolyl-butanamine (MBDB, Eden) enantiomers, *Biochemical Pharmacology* (2008), doi:10.1016/j.bcp.2009.03.001

This is a PDF file of an unedited manuscript that has been accepted for publication. As a service to our customers we are providing this early version of the manuscript. The manuscript will undergo copyediting, typesetting, and review of the resulting proof before it is published in its final form. Please note that during the production process errors may be discovered which could affect the content, and all legal disclaimers that apply to the journal pertain.





1
2
3
4
5 **Stereoselective differences in the cytochrome P450-dependent**
6 **dealkylation and demethylenation of *N*-methyl-benzodioxolyl-**
7 **butanamine (MBDB, Eden) enantiomers**
8
9

10
11
12
13 Markus R. Meyer¹, Frank T. Peters^{1,2}, and Hans H. Maurer^{1*}
14
15

16
17
18 ¹*Department of Experimental and Clinical Toxicology, Institute of Experimental and Clinical*
19 *Pharmacology and Toxicology, Saarland University, D-66421 Homburg (Saar), Germany*
20
21

22 ²*Institute of Forensic Medicine, Friedrich Schiller University, D-07740 Jena, Germany*
23
24
25
26
27
28
29
30
31
32
33
34
35
36
37
38
39
40
41
42
43
44
45
46
47
48
49
50
51
52
53
54
55
56
57
58

59 * Corresponding author. Phone: +49-6841-16-26050; fax: +49-6841-16-26051.
60

61 *E-mail address:* hans.maurer@uks.eu (H.H. Maurer)
62
63
64
65

ABSTRACT

1 In the present study, cytochrome P450 isozymes (P450) involved in the stereoselective
2 metabolism of the designer drug *N*-methyl-benzodioxolyl-butanamine (MBDB, Eden) were
3 identified for the first time. Demethylenation and *N*-demethylation of racemic MBDB as well
4 as its single enantiomers were investigated using cDNA expressed insect cell microsomes.
5 After incubation of MBDB, the two resulting main metabolites 1,2-dihydroxy-4-[2-
6 (methylamino)butyl]benzene (DHMBB) and benzodioxolyl-butanamine (BDB) were
7 separated and quantified by achiral gas chromatography-mass spectrometry after chiral
8 derivatization with *S*-heptafluorobutyrylpropyl chloride. Dealkylation was mainly catalyzed
9 by CYP2B6 and CYP2C19, demethylenation was additionally catalyzed by CYP1A2,
10 CYP2D6, and CYP3A4. The most abundant isozymes after *in vitro-in vivo* correlation using
11 the relative activity factor approach are CYP2B6 for *N*-dealkylation and CYP2D6 for
12 demethylenation the second step being the most relevant. In addition, inhibition studies
13 towards MBDB biotransformation using the CYP2D6 selective inhibitor quinidine confirmed
14 the dominant role of this polymorphic isozyme in total MBDB metabolism. In general, at low
15 substrate concentrations the *S*-enantiomer is metabolized at a higher rate foremost by
16 CYP2C19. These findings are in line with results previously reported for the corresponding
17 ring substituted amphetamines 3,4-methylenedioxy-methamphetamine and 3,4-
18 methylenedioxy-ethylamphetamine. In conclusion, the main enzyme responsible for MBDB
19 metabolism after *in vitro-in vivo* correlation is CYP2D6, whereas CYP2C19 is the most
20 enantioselective.
21
22
23
24
25
26
27
28
29
30
31
32
33
34
35
36
37
38
39
40
41
42
43
44
45
46
47
48
49
50
51

52 *Keywords:* MBDB, amphetamines, enantiomers, CYP, enzyme kinetic, inhibition
53
54
55
56
57
58
59
60
61
62
63
64
65

1. Introduction

Besides 3,4-methylenedioxy-methamphetamine (MDMA, Ecstasy) and 3,4-methylenedioxy-ethylamphetamine (MDEA, Eve), another methylenedioxy compound, the α -ethyl homologue of MDMA, *N*-methyl-benzodioxolyl-butanamine (MBDB, Eden) has appeared on the illicit drug market. Compared to MDMA and MDEA, the data currently available for MBDB concerning metabolism and toxicity are very limited. As reported by Van Aerts et al. [1], the understanding of the toxicological and pharmacological actions and prediction of the risks of consuming MBDB is harder than for MDMA/MDEA. From the pharmacological point of view, MBDB induces interpersonal communication, has MDMA-like stimulant effects and produces euphoria albeit to a lesser extent than MDMA [2]. MBDB is able to increase the concentration of dopamine, serotonin, and noradrenalin but to a minor extent than MDMA or MDEA. In general, MBDB and MDMA have similar properties which was also shown in animal drug discrimination tests [3,4]. Therefore, both are members of the same drug class called “entactogen” [5]. Concerning differences between *R*- and *S*-MBDB, the *S*-enantiomer is more active in the matter of re-uptake inhibition in hippocampal samples [6] and more potent than the same oral dose of *R*-MBDB [1]. Furthermore, MDMA has been found to substitute in *S*-MBDB trained rats [7]. Johnson et al. suggested similar neurotoxic effects of MBDB and MDMA [8]. In the case of MDMA, its main metabolite 4-dihydroxymethamphetamine (DHMA) is easily oxidized to its corresponding quinones which can form adducts with glutathione and other thiol-containing compounds [9-11]. Recently, such adducts have been implicated in MDMA neurotoxicity [12,13].

In vivo metabolism of MBDB is comparable to MDMA/MDEA (Fig.1). In phase-I, it is dealkylated to its active metabolite 3,4-methylenedioxybutanamin (BDB) and demethylenated to the corresponding dihydroxy compound 1,2-dihydroxy-4-[2-(methylamino)butyl]benzene (DHMBB) followed by conjugation in phase-II [14-17].

Since *in vitro* and *in vivo* metabolism of some ring substituted amphetamines (RSA) was shown to be more or less enantioselective [18-23], elucidating this phenomenon is important

1 for the toxicological and pharmacological point of view. Concerning the most popular RSA
2 MDMA, several studies have shown that there is a metabolic preference for the *S*-enantiomer
3 [18-23] and that this difference is at least partially attributable to cytochrome P450 isozymes
4 (P450) [24-27]. MDEA was also investigated for that matter and studies revealed also a
5 preference for the *S*-enantiomer which can explain its enantioselective elimination [26,28,29].
6
7 In the case of MBDB, the data currently available give no idea whether the *S*-form of this
8 RSA is also metabolized preferably by P450 isoforms. Neither *in vivo* nor *in vitro* studies are
9 available concerning the CYP-dependent metabolism of MBDB enantiomers. Solely, one
10 study using racemic MBDB and CYP inhibition in pooled human liver microsomes is
11 available, indicating CYP2D6, CYP3A4, and CYP1A2 being involved in its
12 biotransformation [17].
13
14

15 Therefore, the aim of the presented study was to obtain enantioselective enzyme kinetic data
16 of MBDB *N*-demethylation and demethylenation by the ten P450s most relevant in human
17 drug metabolism.
18
19

20 **2. Materials and Methods**

21 *2.1. Chemicals and reagents*

22 Racemic hydrochloride of MBDB was obtained from Lipomed (Bad Saeckingen, Germany)
23 and racemic DHMBB hydrochloride from ReseaChem (Burgdorf, Switzerland). Methanolic
24 solution (100 mg/L) of racemic BDB-*d*₂ was obtained from Promochem (Wesel, Germany).
25 Sodium bicarbonate was purchased from Fluka (Steinheim, Germany); NADP⁺ from Biomol
26 (Hamburg, Germany), isocitrate, isocitrate dehydrogenase, sodium metabisulfite (Na₂S₂O₅)
27 from Carl Roth (Karlsruhe, Germany), and 3,4-dihydroxybenzylamine (DHBA) from Sigma
28 (Taufkirchen, Germany). Water was purified in the authors' lab using a Millipore filtration
29 unit. All other chemicals and reagents were obtained from Merck (Darmstadt, Germany). The
30 following microsomes were from BD Gentest (Woburn, MA, USA) and delivered by NatuTec
31
32
33
34
35
36
37
38
39
40
41
42
43
44
45
46
47
48
49
50
51
52
53
54
55
56
57
58
59
60
61
62
63
64
65

(Frankfurt/Main, Germany): baculovirus-infected insect cell microsomes (Supersomes; ICM) containing 1 nmol/mL human cDNA-expressed CYP1A2, CYP2A6, CYP2B6, CYP2C8, CYP2C9, CYP2C19, CYP2D6, and CYP3A4 or 2 nmol/mL CYP2E1 and CYP3A5; wild-type baculovirus-infected ICM (control Supersomes), and pooled human liver microsomes (pHLM 20 mg microsomal protein/mL, 400 pmol total P450/mg protein). After delivery, the microsomes were thawed at 37°C, aliquoted, shock-frozen in liquid nitrogen and stored at –80°C until use. All chemicals were of analytical grade or the highest purity available. Single MBDB enantiomers were obtained in the authors' lab through enantioseparation of racemic MBDB as described below and elsewhere [24]. The derivatization reagent *S*-heptafluorobutyrylpropyl chloride (*S*-HFBPCl) was synthesized in the authors' laboratory according to [30].

2.2. Isolation of single enantiomers

Racemic MBDB was separated using a Hewlett Packard Series 1050 semi-preparative HPLC system consisting of a pump and a variable wavelength detector ($\lambda = 285$ nm) which was coupled to an Advantec SF 2120 Super Fraction collector. The stationary phase was a Merck Hibar HPLC ChiraDex column (250 x 10 mm, 5 μ m). The mobile phase consisted of 85% mobile phase A (0.1 M ammonium acetate buffer adjusted to pH 7.0 with acetic acid), and 15% mobile phase B (acetonitrile 49.5%, methanol 49.5%, and triethylamine 1%), flow rate 2 mL/min. The HPLC column was constantly tempered at 15°C using a refrigerator.

MBDB was separated in aliquots (250 μ L) of an aqueous stock solution (1 mg/mL, 50 mg in total). The fractions were collected and checked for optical purity by gas chromatography-mass spectrometry (GC-MS) as described in detail under sample preparation. The respective enantiomer fractions were adjusted to pH 12 with sodium hydroxide and extracted three times with ethyl acetate (150 mL). The combined extracts were dried using magnesium sulfate. Afterwards they were concentrated to a volume of approximately 1 mL under reduced

pressure. Finally, the amount and purity of the MBDB enantiomers were checked as described in detail under sample preparation.

2.3. Microsomal incubations

Incubation mixtures (final volume: 50 μ L) consisted of 90 mmol/L phosphate buffer (pH 7.4), 5 mmol/L $MgCl_2$, 5 mmol/L isocitrate, 1.2 mmol/L $NADP^+$, 0.5 U/mL isocitrate dehydrogenase, 200 U/mL superoxide dismutase and substrate at 37°C. The substrate was added after dilution of a 25 mmol/L aqueous stock solution in the above-mentioned phosphate buffer. Reactions were started by addition of ice-cold microsomes and terminated with 5 μ L of 60% (w/w) perchloric acid.

2.4. Initial screening studies

Incubations were performed with 25 μ mol/L *R,S*-MBDB, *R*-MBDB, or *S*-MBDB and 50 pmol/mL CYP1A2, CYP2A6, CYP2B6, CYP2C8, CYP2C9, CYP2C19, CYP2D6, CYP2E1, CYP3A4, or CYP3A5 for 30 min. For incubations with CYP2A6 or CYP2C9, phosphate buffer was replaced with 45 mmol/L or 90 mmol/L Tris buffer, respectively, according to the Gentest manual. Furthermore, HLM (0.5 mg/ml) were incubated for 30 min at a substrate concentration of 10 μ mol/L.

2.5. Kinetic studies

Kinetic constants of *N*-demethylation (expressed as BDB formation) or demethylation (expressed as DHMBB formation) were derived from incubations with an incubation time of 1 min for CYP2D6 and 10 min for CYP1A2, 2B6, 2C19, and 3A4 and a P450 concentration of 50 pmol/mL.

Calculation of enzyme kinetic constants was similar to previously published calculations [24,31]. Briefly, the Michaelis-Menten equation (equation 1) was used to calculate apparent K_m and V_{max} values for single-enzyme systems. Eadie-Hofstee plots were used to check for

biphasic kinetics. If the Eadie-Hofstee plot indicated biphasic kinetics, eq 1 and the alternative equation 2 for a two-enzyme model [32] were applied to the respective data. For equation 2, $CL_{int,2}$ represents the intrinsic clearance or V_{max}/K_m of the low affinity component [32]. If equation 2 was found to fit the data significantly better (F test, $P < 0.05$), biphasic kinetics were assumed.

$$V = \frac{V_{max} \times [S]}{K_m + [S]} \quad (1)$$

$$V = \frac{V_{max,1} \times [S]}{K_{m,1} + [S]} + CL_{int,2} \times [S] \quad (2)$$

The relative activity factor (RAF) approach [33-35] was used to account for differences in functional levels of redox partners between the two enzyme sources. The turnover rates (TR) of CYP2C19 [probe substrate (PS) *S*-mephenytoin], CYP2D6 (PS bufuralol), CYP2B6 (PS 7-ethoxy-4-trifluoromethylcoumarin), CYP1A2 (PS phenacetin), and CYP3A4 (PS testosterone) in ICM and HLM were taken from the supplier's data sheets. The RAFs were calculated according to equation 3.

$$RAF_{enzyme} = \frac{TR_{PS} \text{ in HLM [pmol/min/mg protein]}}{TR_{PS} \text{ in ICM [pmol/min/mg protein]}} \quad (3)$$

The enzyme velocities V_{enzyme} (see equation 1) for the respective metabolic reactions were calculated at different substrate concentrations and were then multiplied with the corresponding RAF leading to a value, which is defined as 'contribution'. The V_{max} and the K_m values (equation 1) were obtained from the incubations with cDNA-expressed P450s.

$$contribution_{enzyme} = RAF_{enzyme} \times V_{enzyme} \quad (4)$$

The corrected activities (contributions), the percentages of net clearance by a particular P450 at a certain substrate concentration, can be calculated according to equation 5:

$$clearance_{enzyme} [\%] = \frac{contribution_{enzyme}}{\sum contribution_{enzyme}} \times 100 \quad (5)$$

2.6. Chemical inhibition studies

The effect of 3 $\mu\text{mol/L}$ quinidine (CYP2D6 inhibitor) on DHMBB formation was assessed in incubations containing 0.5 mg HLM protein/mL and 1 $\mu\text{mol/L}$ or 5 $\mu\text{mol/L}$ *R,S*-MBDB, *R*-MBDB, or *S*-MBDB (n=6 each). Control incubations (n=6) contained none of these chemical inhibitors. Significance of inhibition was tested by one-tailed unpaired t-tests using GraphPad Prism 3.02 software.

2.7. Sample preparation

After termination, the incubation mixtures were centrifuged and 30 μL of the supernatants were transferred to 1.5-mL reaction caps and diluted with 200 μL aqueous carbonate buffer (35 g/L sodium bicarbonate and 15 g/L sodium carbonate, pH 9) containing the respective internal standard (IS) racemic BDB-*d*₂ and DHBA (0.02 ng/mL, each) and 3% Na₂S₂O₅ and 3% EDTA-Na (250 mmol/L each) for preservation of the dihydroxy compounds.

Derivatization was performed according to [22], with slight modifications: after adding 30 μL derivatization reagent (0.1 mol/L *S*-HFBPCl in dichloromethane), the reaction vials were sealed and left on a rotary shaker at ambient temperature for 30 min. After addition of 50 μL cyclohexane to the reaction vials, they were resealed, and placed on a rotary shaker for 5 min. After phase separation by centrifugation (10000 g for 1 min), the cyclohexane phase was transferred to autosampler vials. Aliquots of 3 μL were injected into the GC-MS.

2.8. Enantioselective GC-NICI-MS quantification

1 The samples were analyzed by an Agilent Technologies (AT) 6890 Series GC system
2 combined with an AT 5973 network mass selective detector, an AT 7683 series injector, and
3 an AT enhanced Chem Station G1701CA, version C.00.00 21-Dec-1999. For detection of
4 *R,S*-BDB and *R,S*-BDB-*d*₂, the GC conditions were as follows: splitless injection mode;
5 column, 5% phenyl methyl siloxane (HP-5MS; 30 m x 0.25 mm (i.d.); 250 nm film
6 thickness); injection port temperature, 280°C; carrier gas, helium; flow rate, 1 mL/min;
7 column temperature, 180°C increased to 218°C at 50°C/min, to 230°C at 4°C/min, and to
8 325°C at 50°C/min. The negative-ion chemical ionization (NICI)-MS conditions were as
9 follows: transfer line heater, 280°C; NICI, methane (2 mL/min); source temperature, 150°C;
10 solvent delay, 3.5 min; selected-ion monitoring (SIM) mode with the following ions: *m/z* 446
11 for BDB and 448 for BDB-*d*₂.
12
13
14
15
16
17
18
19
20
21
22
23

24 For detection of DHMBB and DHBA, the GC and NICI-MS conditions were modified as
25 follows: column temperature, 180°C increased to 278°C at 50°C/min to 299°C at 2°C/min,
26 and to 325°C at 50°C/min. Solvent delay, 3.5 min; SIM mode with the following ions: *m/z*
27 780 for DHMBB and 430 for DHBA.
28
29
30
31
32
33

34 BDB and DMBB enantiomers were quantified by comparison of their peak-area ratios
35 (enantiomers of analyte vs corresponding enantiomer of the IS) to calibration curves in which
36 the peak-area ratios of enriched calibrators had been plotted vs their concentrations (0.01, 0.5,
37 5.0, 10 µmol/L) using a weighted (1/*x*) least-squares linear regression model.
38
39
40
41
42
43
44
45
46

47 **3. Results**

48 **3.1. Semi-preparative separation of *R,S*-MBDB**

49 Fifty mg of racemic MBDB-HCl were separated under the described conditions. As the chiral
50 HPLC method did not provide a satisfying purity and separation of the enantiomers, the above
51 described separation and extraction procedure was performed twice. Purity check of the
52
53
54
55
56
57
58
59
60
61
62
63
64
65

isolated enantiomers by GC-MS indicated high optical purities of *S*-MBDB (97%) and *R*-MBDB (98%). The yield was approximately 40% or 10 mg per enantiomer.

3.2. Enantioselective GC-NICI-MS quantification

The mass fragmentograms shown in Fig. 2 demonstrate that the modified GC-MS conditions applied for analysis of DHMBB and BDB enantiomers provided sufficient separation. The chosen target ions were selective for the analytes under these conditions as proven with blank samples (control microsomes without substrate and IS) and zero samples (control microsomes without substrate, but with IS). The method showed sufficient linearity in a range of 0.01 to 10 $\mu\text{mol/L}$ DHMBB or BDB ($r^2 = 0.98 - 0.99$).

3.3. Initial activity screening

N-demethylation of racemic MBDB and its enantiomers was catalyzed by CYP2D6, CYP2B6, CYP2C19, CYP2E1, and CYP3A4. Demethylation of MBDB and its enantiomers was catalyzed by CYP1A2, CYP2B6, CYP2C19, CYP2D6, and CYP3A4. After incubation of HLM at a concentration of 10 $\mu\text{mol/L}$ racemic MBDB, DHMBB (0.15 $\mu\text{g/mL}$) and BDB (0.07 $\mu\text{g/mL}$) were formed indicating DHMBB to be the main metabolite.

3.4. Kinetic studies

The kinetic parameters could not be determined for all P450 capable of catalyzing the monitored metabolic reactions, because the activity of CYP2D6, CYP2E1 and CYP3A4 with respect to the *N*-demethylation was too low. The same was true for CYP2C19 catalyzed demethylation of *R*-MBDB in racemic MBDB. The K_m and V_{max} values for the other P450s are listed in Table 1. The data for CYP2B6, and CYP2C19 (*N*-demethylation) and CYP1A2, CYP2D6, CYP2C19, and CYP2B6, and CYP3A4 for *R*-MBDB (demethylation) followed the expected classical hyperbolic Michaelis-Menten kinetics as shown in Fig. 3 A-D. In contrast, the Eadie-Hofstee plots (Fig. 6) of CYP2B6 for *S*-MBDB and CYP3A4 for racemic

1 MBDB and *S*-MBDB (demethylenation) clearly indicated biphasic kinetics, which was
2 statistically confirmed (F-test, $p < 0.05$). Hence, the respective kinetic parameters were
3 estimated by fitting the data into equation 2 for a biphasic kinetic. The second enzyme
4 component is represented by $CL_{int,2} \times [S]$. The corresponding V_{max1}/K_{m1} values are presented
5 in Table 2. Fig. 4 shows plots of the percentages of net clearance as calculated from the RAF-
6 corrected kinetic data versus substrate concentrations up to 10 $\mu\text{mol/L}$. The data for total
7 metabolite formation of *S*-MBDB, racemic MBDB, and *R*-MBDB are shown in panels A-C,
8 respectively. At low substrate concentrations (1 $\mu\text{mol/L}$), MBDB biotransformation is
9 predominantly catalyzed by CYP2D6 with percentages of net clearance of 98% in the case of
10 *S*-MBDB to 80% in the case of *R*-MBDB. Whereas, monitoring only the *N*-demethylation,
11 CYP2B6 is the most important isozyme with a contribution of approximately 90%. At high
12 substrate concentrations (up to 10 $\mu\text{mol/L}$), the relevance of CYP2D6 in total
13 biotransformation decreases and the other isozymes become increasingly important, namely
14 CYP3A4 in the case of *S*-MBDB, CYP2B6 in the case of racemic MBDB and CYP1A2/2B6
15 in the case of *R*-MBDB.

16 Marked enantioselectivity ($k_{m(R\text{-MDMA})}/k_{m(S\text{-MDMA})} > 1.5$ or < 0.5) was observed for CYP2C19,
17 CYP2D6, and CYP3A4 for demethylenation. *N*-Demethylation seems not to be
18 enantioselective in the case of MBDB, whereas incubating racemic MBDB, maximum
19 turnover rate (V_{max} , CYP2C19) of *S*-MBDB is nearly four times higher than V_{max} of *R*-
20 MBDB.

21 **3.5. Chemical inhibition studies**

22 To confirm the role of CYP2D6 in the most important step in MBDB metabolism which leads
23 to the potentially toxic metabolite DHMBB, inhibition experiments were performed using
24 pHLM, with the chemical inhibitor quinidine at a concentration according to the literature
25 [36]. These experiments were performed at a substrate concentration representing
26 concentrations expected in recreational users, namely 5 $\mu\text{mol/L}$ to account for the
27

concentration dependence of the involvement of individual P450s in MBDB demethylation.

The results of the experiments with the chemical inhibitor quinidine are presented in Fig. 5.

4. Discussion

Since only one study [17] is available using inhibition studies in pHLM to investigate the CYP-dependent metabolism of at least racemic MDMA, indicating CYP2D6, CYP3A4, and CYP1A2 being involved, this work does not account for the chirality of MBDB and the different *in vivo* metabolism of the two enantiomers. Furthermore, not all relevant P450 isoforms were considered due to a lack of specific inhibitors. The study presented here is the first providing enantioselective enzyme kinetic data of *N*-demethylation and demethylation of MBDB by the ten recombinant P450s, which are the most relevant in human drug metabolism. Among these enzymes was CYP2C19 which is known to be one of the five most abundant P450s involved in xenobiotic metabolism [37], which had so far not been considered in studies on MBDB metabolism.

The experiments were performed with racemic MBDB as present in clandestine tablets as well as single MBDB enantiomers to check whether certain P450s specifically metabolize certain enantiomers and whether the enantiomers influence each others' metabolism.

Various buffers and buffer concentrations as well as organic modifiers were tested for semi-preparative isolation of the single enantiomers for these experiments. The best result in enantiomer separation was achieved with the mobile phase composition described in the Materials and Methods section but the phosphate buffer turned out to be problematic in the following isolation of the enantiomers. The final products were obtained in solution and quantified according to a modified previously published method for MDMA/MDEA enantiomers [22]. Despite rather low recoveries (~ 40% per enantiomer), the isolated amounts were sufficient for further kinetic studies.

1 The described quantification method according to [22] was modified to be applicable for the
2 presented kinetic studies. It is based on the derivatization of analyte enantiomers to
3 diastereomers using an optically pure derivatization reagent. The diastereomeric derivatives
4 can then be separated on an achiral GC column. In the present study, the amount of
5 derivatization reagent had to be increased to achieve a reliable and reproducible (triple)
6 derivatization of the DHMBB enantiomers. In addition, the oven temperature program, the
7 run-time and the ions monitored in SIM had to be modified to allow separation and detection
8 of BDB and the triple derivatives of the dihydroxy compounds, DHMBB and DHBA (Fig. 2).
9
10 According to the supplier's advice, the incubation conditions chosen in the initial screening
11 experiment are applicable for checking the general involvement of particular P450 enzymes.
12 Because of the very low activity of CYP2D6, CYP2E1 and CYP3A4 with respect to the *N*-
13 demethylation and the CYP2C19 catalyzed demethylation of *R*-MBDB in racemic MBDB
14 only the other P450s which had shown activity in the initial screening could be characterized
15 with respect to their kinetic profiles. Resulting curves are presented in Fig. 3 A-D. Duration
16 and protein content of all incubations in these studies were within the linear range of
17 metabolite formation (data not shown). Less than 20% of substrate was metabolized in all
18 incubations with exception of the lowest substrate concentrations. K_m and V_{max} values of the
19 isozymes are presented in Table 1. Fig. 4 shows plots of the percentages of net clearance as
20 calculated from the RAF corrected kinetic data versus substrate concentrations up to 10
21 $\mu\text{mol/L}$. The data for total metabolite formation after incubation of *S*-MBDB, racemic MBDB
22 and *R*-MBDB are shown in panels A-C, respectively.

23 As already discussed for MDMA in our previous paper [24], there are inherent differences in
24 the K_m and V_{max} values of the single enantiomer kinetics vs. the values of racemic MBDB in
25 incubations with racemic MBDB. *R*- and *S*-MBDB are competitors for the limited number of
26 active sites in the incubation mixture. Each binding site can only transform one molecule at a
27 time, either *R*-MBDB or *S*-MBDB. Hence, at saturation, approximately half of the active sites
28 are busy transforming *R*-MBDB while the other half is busy transforming *S*-MBDB. In

incubations of single enantiomers, however, all active sites are available for one enantiomer.

1 This explains the higher V_{\max} values of the single enantiomer kinetics. The differences of the
2
3 K_m values can be explained in the same way. This coherence is considerably distinctive in the
4
5 case of CYP2C19. Determination of kinetic data after incubation of racemic MBDB for *R*-
6
7 MBDB is not possible because only a very small amount of *R*-DHMBB is formed throughout
8
9 this enzymatic reaction resulting from a much higher affinity of *S*-MBDB for CYP2C19.

10
11
12 CYP2D6 turned out to be the isozyme with the highest affinity towards racemic MBDB and
13
14 its enantiomers (Table 2). In addition, there is a generally higher affinity towards *S*-MBDB
15
16 than *R*-MBDB concerning all involved isozymes. The obvious difference in the K_m values of
17
18 racemic MBDB and the respective enantiomers might be caused by interactions of *R*- and *S*-
19
20 MBDB in incubations of the racemate.
21
22
23

24
25 Common methods of calculating the net clearance are based on the assumption that substrate
26
27 concentrations are lower than 10% of K_m of the respective isozymes [34,38]. As described in
28
29 one of our previous publication [24] this calculation is critical if the isozymes involved in the
30
31 metabolic reaction have a very low K_m value which is considerably below expected plasma
32
33 concentrations. In the present study, K_m values of ≤ 1 $\mu\text{mol/L}$ were found for MBDB
34
35 demethylation by CYP2D6. These were below expected plasma concentrations of MBDB,
36
37 which should usually be in the range of 1-5 $\mu\text{mol/L}$ (207-1035 $\mu\text{g/L}$), as MBDB is consumed
38
39 in the same or slightly higher dosage than MDMA, but can reach 6 $\mu\text{mol/L}$ and higher in
40
41 severe intoxications [39,40]. In the present study, we chose to calculate the percentages of net
42
43 clearance for substrate concentrations ranging from 1 to 10 $\mu\text{mol/L}$ (Fig. 4) to model the
44
45 involvement of the studied P450s over the relevant concentration range. At low substrate
46
47 concentrations (1 $\mu\text{mol/L}$), MBDB biotransformation was predominantly catalyzed by
48
49 CYP2D6 (from 98 to 80%). Whereas, monitoring only the *N*-demethylation, CYP2B6 is
50
51 clearly the most abundant isoform. Also, at high substrate concentrations (up to 10 $\mu\text{mol/L}$),
52
53 the relevance of CYP2D6 in total biotransformation decreased and the other isozymes became
54
55
56
57
58
59
60
61
62
63
64
65

increasingly important, namely CYP3A4 in the case of *S*-MBDB, CYP2B6 in the case of racemic MBDB and CYP1A2/2B6 in the case of *R*-MBDB.

To take a look at the inhibition studies, the demethylenation was inhibited significantly by quinidine at a substrate concentration of 5 $\mu\text{mol/L}$ (Fig. 5). This is in line with the calculated percentages of net clearance as shown in Fig. 4.

This importance of CYP2D6 is critical from the toxicological point of view, because this isozymes can be inhibited by quite a number of different xenobiotics, e.g. MDMA which is known to be a mechanism-based inhibitor of this isozyme [41]. This means that in case of co-ingestion, the metabolism of MBDB might be considerably reduced. Moreover, due to structural and metabolic similarities between MBDB and MDMA, MBDB should also be a mechanism based inhibitor of CYP2D6 what additionally increases the risk of any kind of co-ingestion, but this has to be proven experimentally.

Marked enantioselectivity ($k_{m(R\text{-MDMA})}/k_{m(S\text{-MDMA})} > 1.5$ or < 0.5) was observed for CYP2C19, CYP2D6, and CYP3A4 for demethylenation. *N*-Demethylation seems not to be enantioselective in the case of MBDB, whereas incubating racemic MBDB, maximum turnover rate (V_{max} , CYP2C19) for *S*-MBDB is nearly four times higher than for the *R*-form.

CYP2C19 showed the largest extent of enantioselectivity for demethylenation with a more than 30 fold higher affinity for the *S*-enantiomer. CYP2D6, CYP2B6, and CYP3A4 also showed marked enantioselectivity, with a 6, 3, and 2 fold higher affinity for the *S*-form of MBDB, respectively. Considering these findings along with the fact that demethylenation is the major metabolic step of MBDB metabolism *in vivo*, the different pharmacokinetic properties of the MBDB enantiomers are therefore most likely attributable to enantioselective demethylenation by different CYP isoforms. CYP2D6 should be most important in this context, because it accounts for more than two thirds of net clearance even at high substrate concentrations as compared to a maximum of 20% for CYP3A4. This must be considered when trying to estimate the time of ingestion from enantiomer ratios in plasma as proposed for e.g. MDMA [18,21], because the time course of such ratios may be considerably different

1 in CYP2D6 poor metabolizers or in case of inhibition of CYP2D6 by MDMA or other co-
2 ingested drugs. In addition, it must be considered that correlation of the presented *in vitro* data
3 with the *in vivo* situation is not straightforward, because *in vivo* DHMBB is further
4 metabolized by *O*-methylation and/or glucuronidation/sulfation. Enantioselectivity of these
5 phase II reactions might of course also influence the enantiomer ratios in plasma samples,
6 especially those of DHMBB, but this has also to be proven experimentally.
7

8 Comparing the above mentioned findings with results previously published for MDMA [24],
9 CYP2C19 seems to be critical for the enantioselective *in vitro* and *in vivo* metabolism of the
10 presented methylenedioxy compounds available as secondary amines. A larger substituent
11 next to the amine as in the case of MBDB seems to increase the affinity of the isoforms,
12 especially CYP2C19, towards the *S*-enantiomer as one can see by the fact that the *R*-
13 enantiomer of MBDB in racemic mixture is metabolized only in a very small amount.
14 Furthermore, P450 isoforms seems to be, at least in part, responsible for the observed
15 enantioselective *in vivo* metabolism of the ring substituted amphetamines.
16
17
18
19
20
21
22
23
24
25
26
27
28
29
30
31

32 **5. Acknowledgements**

33
34
35
36
37 The authors would like to thank Andrea E. Schwaninger, Katja Niesel, Armin A. Weber, and
38 Carsten Schroeder for their assistance and helpful discussions.
39
40
41
42
43
44
45
46
47
48
49
50
51
52
53
54
55
56
57
58
59
60
61
62
63
64
65

References

1. Van Aerts LAGJ, Mallaret M, Rigter H. N-methyl-1-(1,3-benzodioxol-5-yl)-2-butanamine (MBDB): Its properties and possible risks. *Addict Biol* 2000;5:269-82.
2. Nichols DE, Hoffman AJ, Oberlender RA, Jacob P, Shulgin AT. Derivatives of 1-(1,3-benzodioxol-5-yl)-2-butanamine: representatives of a novel therapeutic class. *J Med Chem* 1986;29:2009-15.
3. Oberlender R, Nichols DE. Drug discrimination studies with MDMA and amphetamine. *Psychopharmacology (Berl)* 1988;95:71-6.
4. Oberlender R, Nichols DE. (+)-N-methyl-1-(1,3-benzodioxol-5-yl)-2-butanamine as a discriminative stimulus in studies of 3,4-methylenedioxy-methamphetamine-like behavioral activity. *J Pharmacol Exp Ther* 1990;255:1098-106.
5. Nichols DE. Differences between the mechanism of action of MDMA, MBDB, and the classic hallucinogens. Identification of a new therapeutic class: entactogens. *J Psychoactive Drugs* 1986;18:305-13.
6. Steele TD, Nichols DE, Yim GK. Stereochemical effects of 3,4-methylenedioxymethamphetamine (MDMA) and related amphetamine derivatives on inhibition of uptake of [3H]monoamines into synaptosomes from different regions of rat brain. *Biochem Pharmacol* 1987;36:2297-303.
7. Nichols DE, Oberlender R. Structure-activity relationships of MDMA-like substances. *NIDA Res Monogr* 1989;94:1-29.
8. Johnson MP, Nichols DE. Neurotoxic effects of the alpha-ethyl homologue of MDMA following subacute administration. *Pharmacol Biochem Behav* 1989;33:105-8.
9. Bai F, Lau SS, Monks TJ. Glutathione and N-acetylcysteine conjugates of alpha-methyldopamine produce serotonergic neurotoxicity: possible role in methylenedioxyamphetamine-mediated neurotoxicity. *Chem Res Toxicol* 1999;12:1150-7.

10. Hiramatsu M, Kumagai Y, Unger SE, Cho AK. Metabolism of
1 methylenedioxymethamphetamine: formation of dihydroxymethamphetamine and a
2 quinone identified as its glutathione adduct. *J Pharmacol Exp Ther* 1990;254:521-7.
3
4
11. Miller RT, Lau SS, Monks TJ. 2,5-Bis-(glutathion-S-yl)-alpha-methyldopamine, a
5 putative metabolite of (+/-)-3,4-methylenedioxyamphetamine, decreases brain
6 serotonin concentrations. *Eur J Pharmacol* 1997;323:173-80.
7
8
12. de la Torre R, Farre M. Neurotoxicity of MDMA (ecstasy): the limitations of scaling
9 from animals to humans. *Trends Pharmacol Sci* 2004;25:505-8.
10
11
13. Capela JP, Macedo C, Branco PS, Ferreira LM, Lobo AM, Fernandes E et al.
12 Neurotoxicity mechanisms of thioether ecstasy metabolites. *Neuroscience*
13 2007;146:1743-57.
14
15
14. Maurer HH. On the metabolism and the toxicological analysis of
16 methylenedioxyphenylalkylamine designer drugs by gas chromatography-mass
17 spectrometry. *Ther Drug Monit* 1996;18:465-70.
18
19
15. Kronstrand R. Identification of N-methyl-1-(3,4-methylenedioxyphenyl)-2-
20 butanamine (MBDB) in urine from drug users. *J Anal Toxicol* 1996;20:512-6.
21
22
16. Kintz P. Excretion of MBDB and BDB in urine, saliva, and sweat following single
23 oral administration. *J Anal Toxicol* 1997;21:570-5.
24
25
17. Maurer HH, Bickeboeller-Friedrich J, Kraemer T, Peters FT. Toxicokinetics and
26 analytical toxicology of amphetamine-derived designer drugs ("Ecstasy"). *Toxicol*
27 *Lett* 2000;112:133-42.
28
29
18. Fallon JK, Kicman AT, Henry JA, Milligan PJ, Cowan DA, Hutt AJ. Stereospecific
30 analysis and enantiomeric disposition of 3, 4-methylenedioxymethamphetamine
31 (Ecstasy) in humans. *Clin Chem* 1999;45:1058-69.
32
33
19. Kalant H. The pharmacology and toxicology of "ecstasy" (MDMA) and related drugs
34 [review]. *Can Med Assoc J* 2001;165:917-28.
35
36
37
38
39
40
41
42
43
44
45
46
47
48
49
50
51
52
53
54
55
56
57
58
59
60
61
62
63
64
65

- 1
2
3
4
5
6
7
8
9
10
11
12
13
14
15
16
17
18
19
20
21
22
23
24
25
26
27
28
29
30
31
32
33
34
35
36
37
38
39
40
41
42
43
44
45
46
47
48
49
50
51
52
53
54
55
56
57
58
59
60
61
62
63
64
65
20. Kraemer T, Maurer HH. Toxicokinetics of amphetamines: Metabolism and toxicokinetic data of designer drugs, of amphetamine, methamphetamine and their N-alkyl derivatives [review]. *Ther Drug Monit* 2002;24:277-89.
 21. Peters FT, Samyn N, Wahl M, Kraemer T, de Boeck G, Maurer HH. Concentrations and Ratios of Amphetamine, Methamphetamine, MDA, MDMA, and MDEA Enantiomers determined in Plasma Samples From Clinical Toxicology and Driving Under the Influence of Drugs Cases by GC-NICI-MS. *J Anal Toxicol* 2003;27:552-9.
 22. Peters FT, Samyn N, Lamers C, Riedel W, Kraemer T, de Boeck G et al. Drug Testing in Blood: Validated Negative-Ion Chemical Ionization Gas Chromatographic-Mass Spectrometric Assay for Enantioselective Determination of the Designer Drugs MDA, MDMA (Ecstasy) and MDEA and Its Application to Samples from a Controlled Study with MDMA. *Clin Chem* 2005;51:1811-22.
 23. Pizarro N, Farre M, Pujadas M, Peiro AM, Roset PN, Joglar J et al. Stereochemical analysis of 3,4-methylenedioxymethamphetamine and its main metabolites in human samples including the catechol-type metabolite (3,4-dihydroxymethamphetamine). *Drug Metab Dispos* 2004;32:1001-7.
 24. Meyer MR, Peters FT, Maurer HH. The Role of Human Hepatic Cytochrome P450 Isozymes in the Metabolism of Racemic MDMA and its Enantiomers. *Drug Metab Dispos* 2008;36:2345-54.
 25. Lin LY, Di Stefano EW, Schmitz DA, Hsu L, Ellis SW, Lennard MS et al. Oxidation of methamphetamine and methylenedioxymethamphetamine by CYP2D6. *Drug Metab Dispos* 1997;25:1059-64.
 26. Kreth K, Kovar K, Schwab M, Zanger UM. Identification of the human cytochromes P450 involved in the oxidative metabolism of "Ecstasy"-related designer drugs. *Biochem Pharmacol* 2000;59:1563-71.

- 1
2
3
4
5
6
7
8
9
10
11
12
13
14
15
16
17
18
19
20
21
22
23
24
25
26
27
28
29
30
31
32
33
34
35
36
37
38
39
40
41
42
43
44
45
46
47
48
49
50
51
52
53
54
55
56
57
58
59
60
61
62
63
64
65
27. Tucker GT, Lennard MS, Ellis SW, Woods HF, Cho AK, Lin LY et al. The demethylenation of methylenedioxyamphetamine ("ecstasy") by debrisoquine hydroxylase (CYP2D6). *Biochem Pharmacol* 1994;47:1151-6.
 28. Brunnenberg M, Kovar KA. Stereospecific analysis of ecstasy-like N-ethyl-3,4-methylenedioxyamphetamine and its metabolites in humans. *J Chromatogr B Biomed Sci Appl* 2001;751:9-18.
 29. Buechler J, Schwab M, Mikus G, Fischer B, Hermle L, Marx C et al. Enantioselective quantitation of the ecstasy compound (R)- and (S)-N-ethyl-3,4-methylenedioxyamphetamine and its major metabolites in human plasma and urine. *J Chromatogr B Analyt Technol Biomed Life Sci* 2003;793:207-22.
 30. Peters FT, Kraemer T, Maurer HH. Drug testing in blood: validated negative-ion chemical ionization gas chromatographic-mass spectrometric assay for determination of amphetamine and methamphetamine enantiomers and its application to toxicology cases. *Clin Chem* 2002;48:1472-85.
 31. Sauer C, Peters FT, Schwaninger AE, Meyer MR, Maurer HH. Identification of Cytochrome P450 Enzymes Involved in the Metabolism of the Designer Drugs *N*-(1-Phenylcyclohexyl)-3-ethoxypropanamine (PCEPA) and *N*-(1-Phenylcyclohexyl)-3-methoxypropanamine (PCMPA). *Chem Res Toxicol* 2008;21:1949-55.
 32. Clarke SE. In vitro assessment of human cytochrome P450. *Xenobiotica* 1998;28:1167-202.
 33. Crespi CL, Miller VP. The use of heterologously expressed drug metabolizing enzymes-state of the art and prospects for the future. *Pharmacol Ther* 1999;84:121-31.
 34. Venkatakrisnan K, von Moltke LL, Court M.H., Harmatz JS, Crespi CL, Greenblatt DJ. Comparison between cytochrome P450 (CYP) content and relative activity approaches to scaling from cDNA-expressed CYPs to human liver microsomes: ratios of accessory proteins as sources of discrepancies between the approaches. *Drug Metab Dispos* 2000;28:1493-504.

- 1
2
3
4
5
6
7
8
9
10
11
12
13
14
15
16
17
18
19
20
21
22
23
24
25
26
27
28
29
30
31
32
33
34
35
36
37
38
39
40
41
42
43
44
45
46
47
48
49
50
51
52
53
54
55
56
57
58
59
60
61
62
63
64
65
35. Grime K, Riley RJ. The impact of in vitro binding on in vitro-in vivo extrapolations, projections of metabolic clearance and clinical drug-drug interactions. *Curr Drug Metab* 2006;7:251-64.
 36. Newton DJ, Wang RW, Lu AY. Cytochrome P450 inhibitors. Evaluation of specificities in the in vitro metabolism of therapeutic agents by human liver microsomes. *Drug Metab Dispos* 1995;23:154-8.
 37. Guengerich FP. Human Cytochrome P450 Enzymes. In: Ortiz-de-Montellano PR, editor. *Cytochrome P450 - Structure, Mechanism, and Biochemistry*. 3rd ed. New York: Kluwer Academic/Plenum Publishers, 2005. p. 377-530.
 38. Crespi CL. Xenobiotic-metabolizing human cells as tools for pharmacological and toxicological research. In: Testa B, Meyer UA, editors. *Advances in Drug Research*. 26 ed. London: Academic Press, 1995. p. 179-235.
 39. Carter N, Ruddy GN, Milroy CM, Forrest AR. Deaths associated with MBDB misuse. *Int J Legal Med* 2000;113:168-70.
 40. Rothe M, Pragst F, Spiegel K, Harrach T, Fischer K, Kunkel J. Hair concentrations and self-reported abuse history of 20 amphetamine and ecstasy users. *Forensic Sci Int* 1997;89:111-28.
 41. Heydari A, Yeo KR, Lennard MS, Ellis SW, Tucker GT, Rostami-Hodjegan A. Mechanism-based inactivation of CYP2D6 by methylenedioxymethamphetamine. *Drug Metab Dispos* 2004;32:1213-7.

Legends to the Figures

1
2
3 Fig. 1. - The two main metabolic steps of *R*- and *S*-MBDB leading to the formation of the
4
5 corresponding enantiomers of 1,2-dihydroxy-4-[2-(methylamino)butyl]benzene (DHMBB)
6
7 and 3,4-methylenedioxybutanamin (BDB).
8
9

10
11
12 Fig. 2. - Typical mass fragmentograms of ions m/z 430 for DHBA and m/z 780 for DHMBB
13
14 of an incubation mixture (CYP2C19) of racemic MBDB (A), *R*-MBDB (B), and *S*-MBDB (C)
15
16 after derivatization.
17
18
19
20
21

22 Fig. 3. - Michaelis-Menten plots for BDB (left) and DHMBB (right) formation catalyzed by
23
24 CYP2B6 (3A) and CYP2C19 (3B) and Michaelis-Menten plots for DHMBB formation
25
26 catalyzed by CYP2D6 (3C left), CYP1A2 (3C right), and CYP3A4 (3D). Data points
27
28 represent means and ranges (error bars) of duplicate measurements. The solid curves represent
29
30 formation of *R*-BDB/*R*-DHMBB from racemic MBDB (upper part) and *R*-MBDB (lower
31
32 part). The broken curves represent formation of *S*-BDB/*S*-DHMBB from racemic MBDB
33
34 (upper part) and *S*-MBDB (lower part).
35
36
37
38
39
40
41

42 Fig. 4. - Plots of calculated total net clearance (%) vs. substrate concentration for the *N*-
43
44 demethylation plus demethylenation.
45
46
47
48

49 Fig. 5. - Effect of the chemical inhibitor quinidine (closed column), 3 $\mu\text{mol/L}$ (CYP2D6) on
50
51 demethylenation in incubation mixtures containing 5 $\mu\text{mol/L}$ of *R,S*-, *R*- or *S*-MBDB.
52
53 Metabolite formation of the control incubations (open column) was set to 100%. Each bar
54
55 represents the mean of six incubations \pm standard error of the mean. (***) $p < 0.005$.
56
57
58
59
60
61
62
63
64
65

Fig. 6. – Eadie-Hofstee plots of CYP2B6 for *S*-MBDB and CYP3A4 for racemic MBDB and *S*-MBDB (demethylenation) indicating biphasic kinetics.

Accepted Manuscript

1
2
3
4
5
6
7
8
9
10
11
12
13
14
15
16
17
18
19
20
21
22
23
24
25
26
27
28
29
30
31
32
33
34
35
36
37
38
39
40
41
42
43
44
45
46
47
48
49
50
51
52
53
54
55
56
57
58
59
60
61
62
63
64
65

Table 1

Kinetic Data for the Two Main Metabolic Steps of MBDB

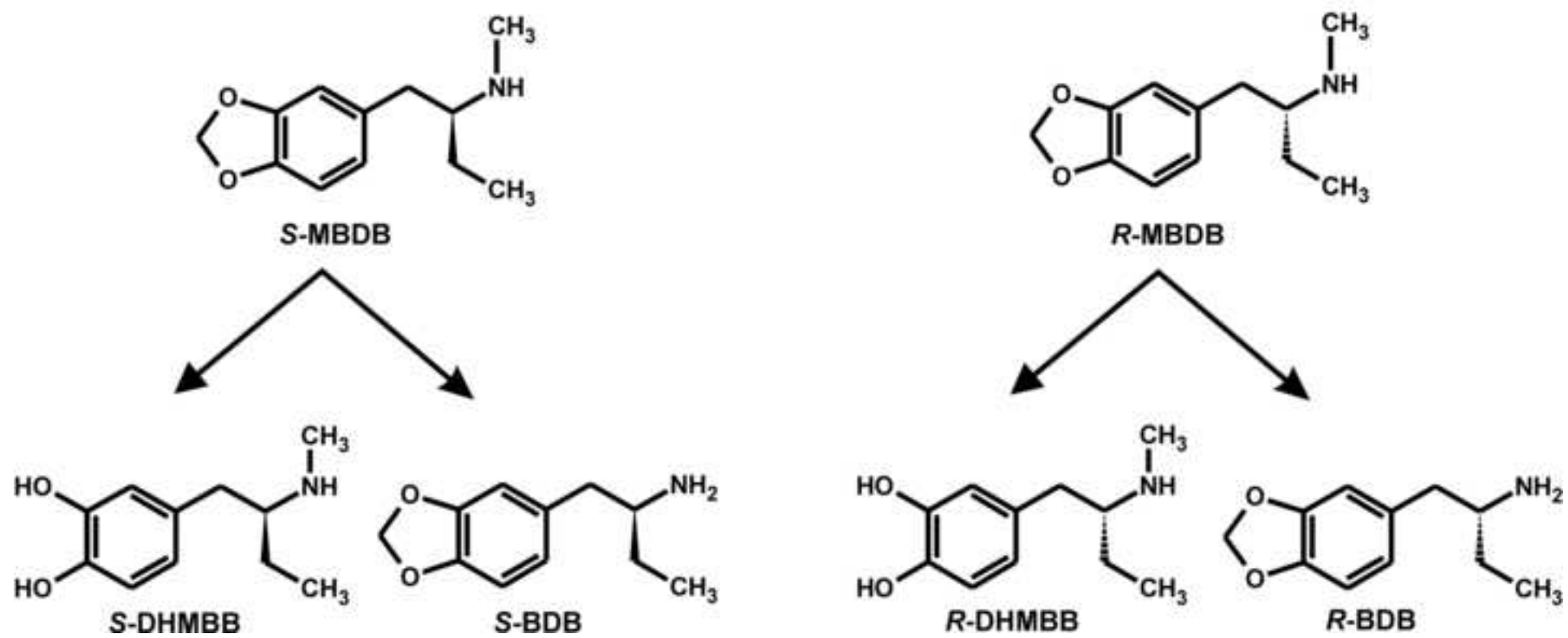
		BDB formation		DHMBB formation	
		V_{\max}	K_m	V_{\max}	K_m
R,S-MBDB	CYP 1A2	not determined	not determined	0.6 ± 0.1	68 ± 11
	CYP 2B6	3.6 ± 0.13	114 ± 19	3.0 ± 0.2	124 ± 13
	CYP 2C19	0.9 ± 0.2	79 ± 13	2.2 ± 0.1	100 ± 6
	CYP 2D6	not determined	not determined	12 ± 0.09	1.0 ± 0.02
	CYP 3A4	not determined	not determined	$0.8^* \pm 0.2$	$85^* \pm 23$
R-MBDB (racemic MBDB)	CYP 1A2	not determined	not determined	0.2 ± 0.01	33 ± 6.1
	CYP 2B6	2.3 ± 0.2	61 ± 15	1.6 ± 0.09	62 ± 10
	CYP 2C19	0.2 ± 0.03	41 ± 17	not determined	not determined
	CYP 2D6	not determined	not determined	5.0 ± 0.1	0.5 ± 0.06
	CYP 3A4	not determined	not determined	$0.7^* \pm 0.2$	$83^* \pm 28$
S-MBDB (racemic MBDB)	CYP 1A2	not determined	not determined	0.4 ± 0.02	31 ± 4.9
	CYP 2B6	1.6 ± 0.04	82 ± 5.4	2.0 ± 0.1	133 ± 21
	CYP 2C19	0.7 ± 0.04	51 ± 9.0	1.7 ± 0.08	37 ± 6.0
	CYP 2D6	not determined	not determined	6.8 ± 0.1	0.6 ± 0.05
	CYP 3A4	not determined	not determined	$0.8^* \pm 0.2$	$84^* \pm 23$

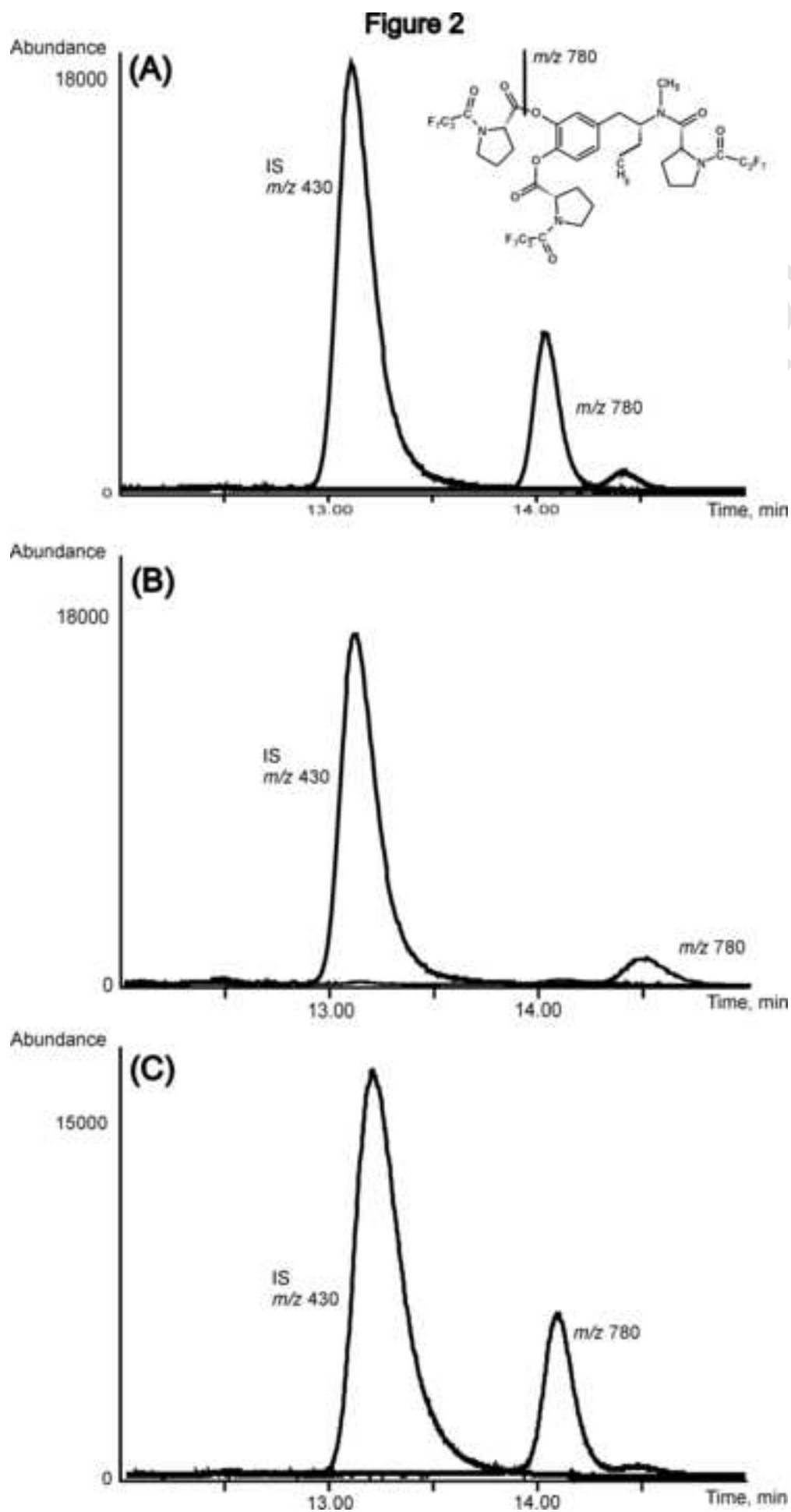
R-MBDB (single enantiomer)	CYP 1A2	not determined	not determined	0.5 ± 0.02	121 ± 15
	CYP 2B6	2.5 ± 0.06	138 ± 10	3.3 ± 0.09	83 ± 8.0
	CYP 2C19	0.2 ± 0.01	46 ± 6.0	1.0 ± 0.03	85 ± 9.0
	CYP 2D6	not determined	not determined	11 ± 0.2	2.2 ± 0.2
	CYP 3A4	not determined	not determined	0.7 ± 0.02	88 ± 9
S-MBDB (single enantiomer)	CYP 1A2	not determined	not determined	0.6 ± 0.02	131 ± 16
	CYP 2B6	0.7 ± 0.03	119 ± 16	$0.2 * \pm 0.07$	$56 * \pm 14$
	CYP 2C19	0.3 ± 0.02	73 ± 18	0.6 ± 0.02	2.6 ± 0.02
	CYP 2D6	not determined	not determined	6.3 ± 0.1	0.4 ± 0.05
	CYP 3A4	not determined	not determined	$0.4 * \pm 0.06$	$28 * \pm 8.0$

units are: V_{max} , pmol/min/pmol; K_m , $\mu\text{mol/L}$

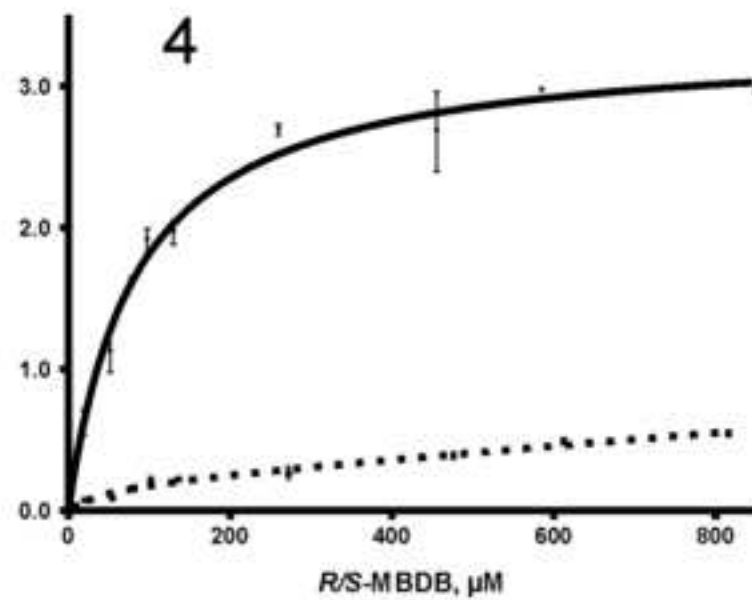
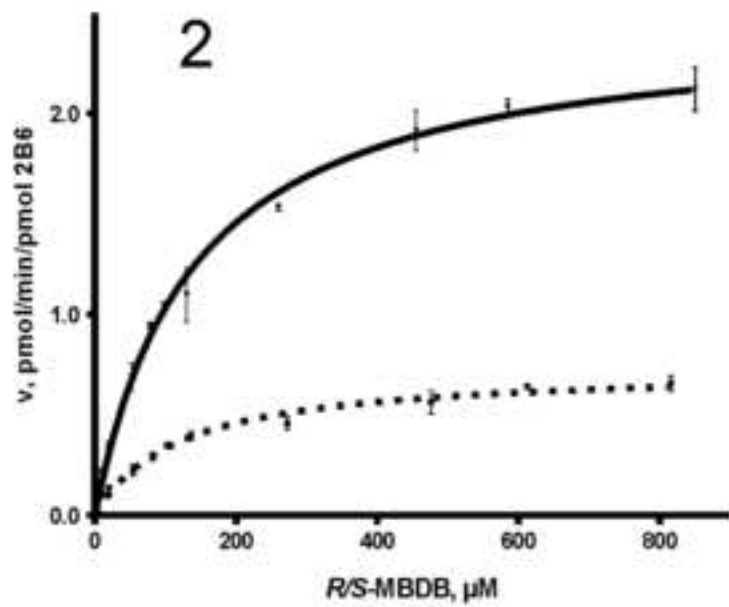
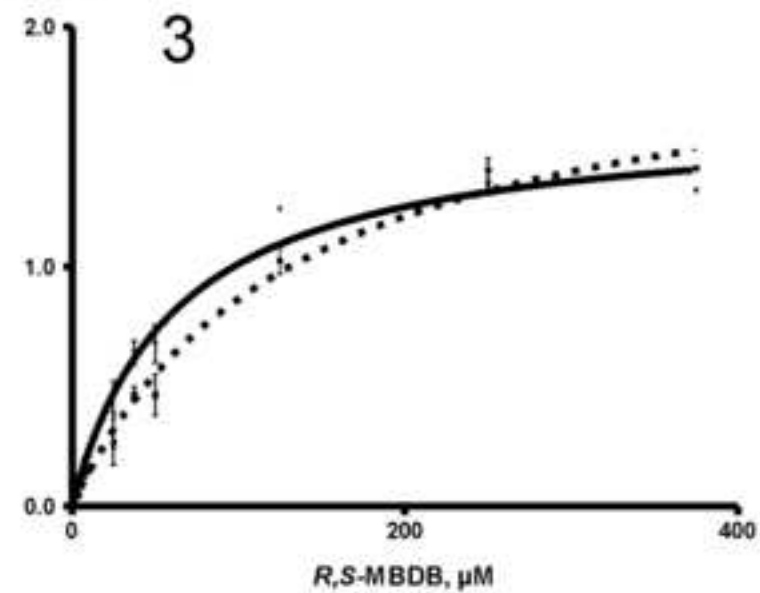
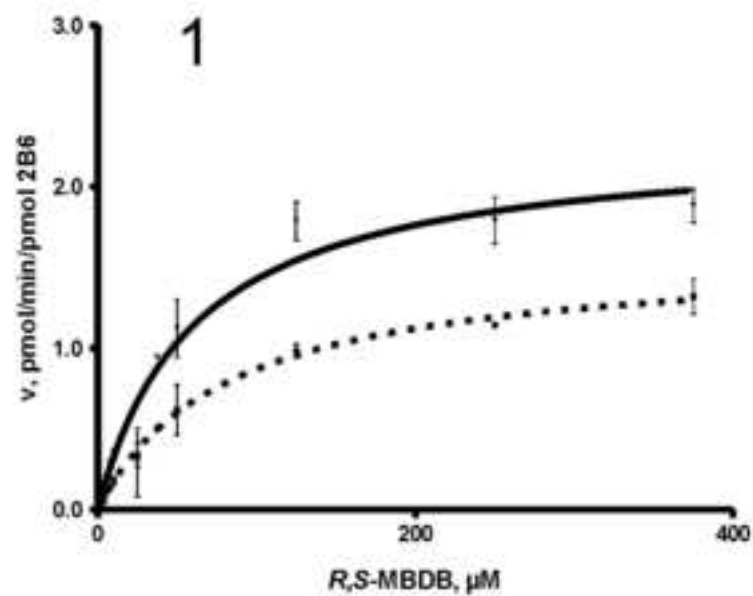
* V_{max1} and K_{m1}

Figure 1

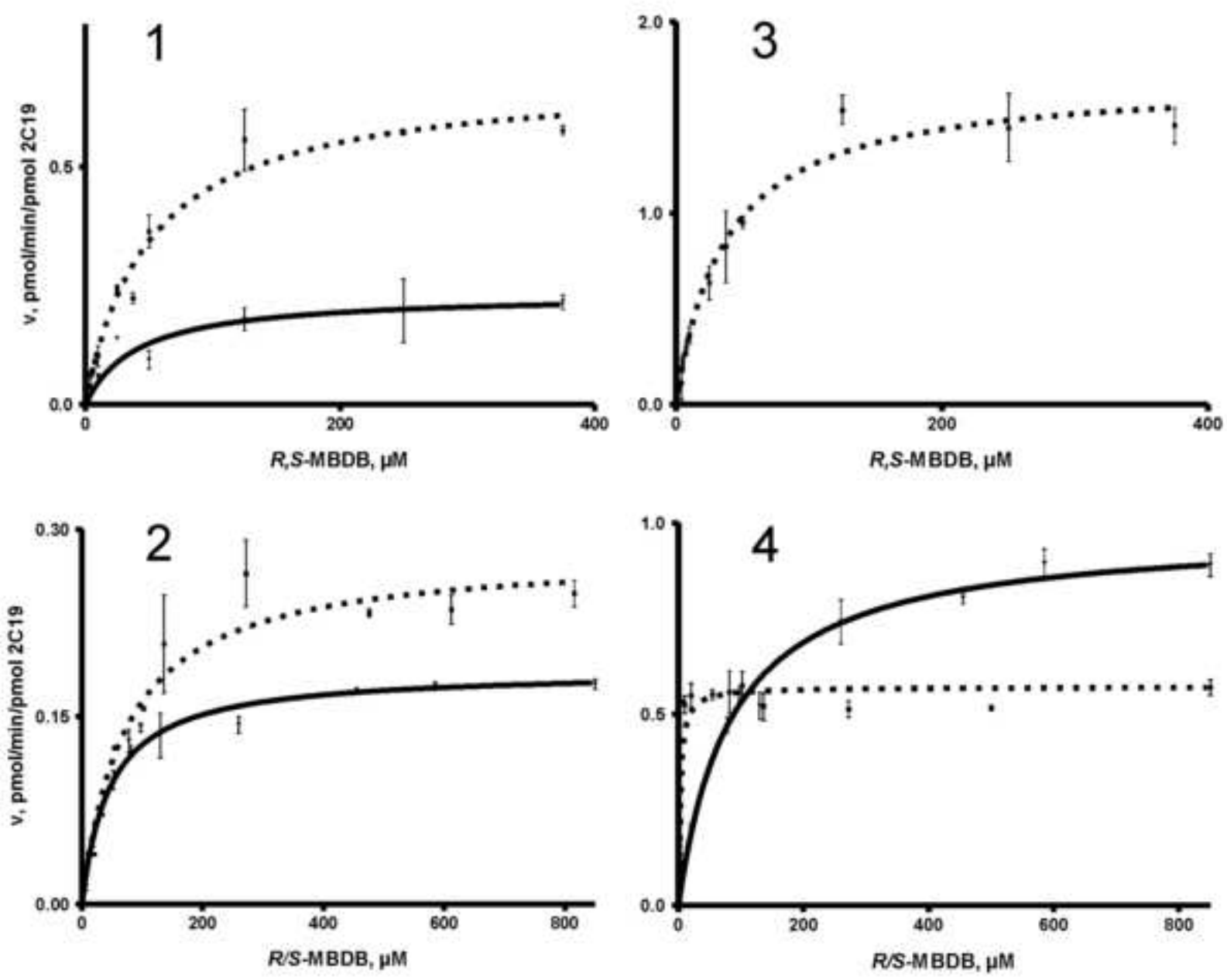




CYP2B6



CYP2C19



CYP2D6/1A2

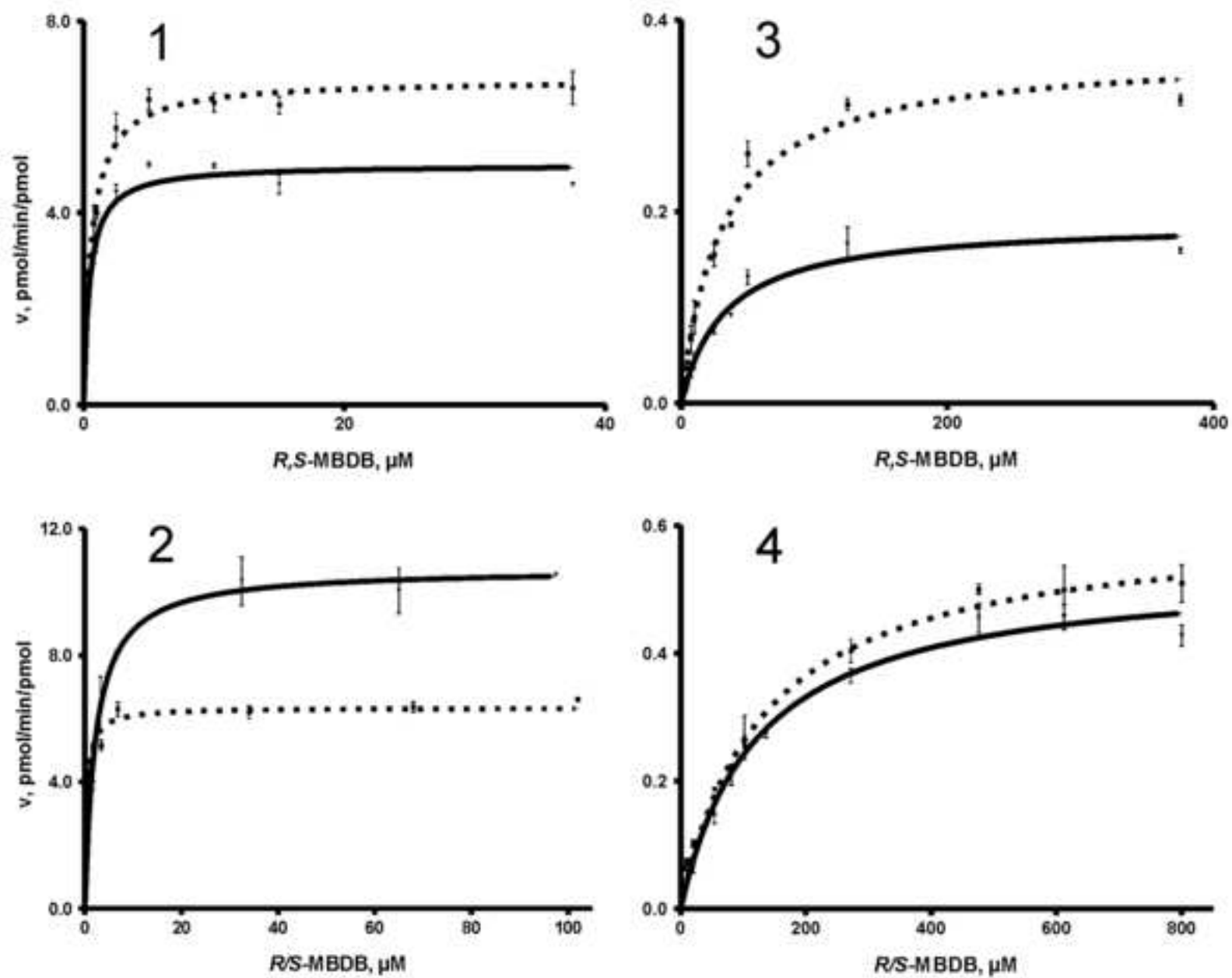
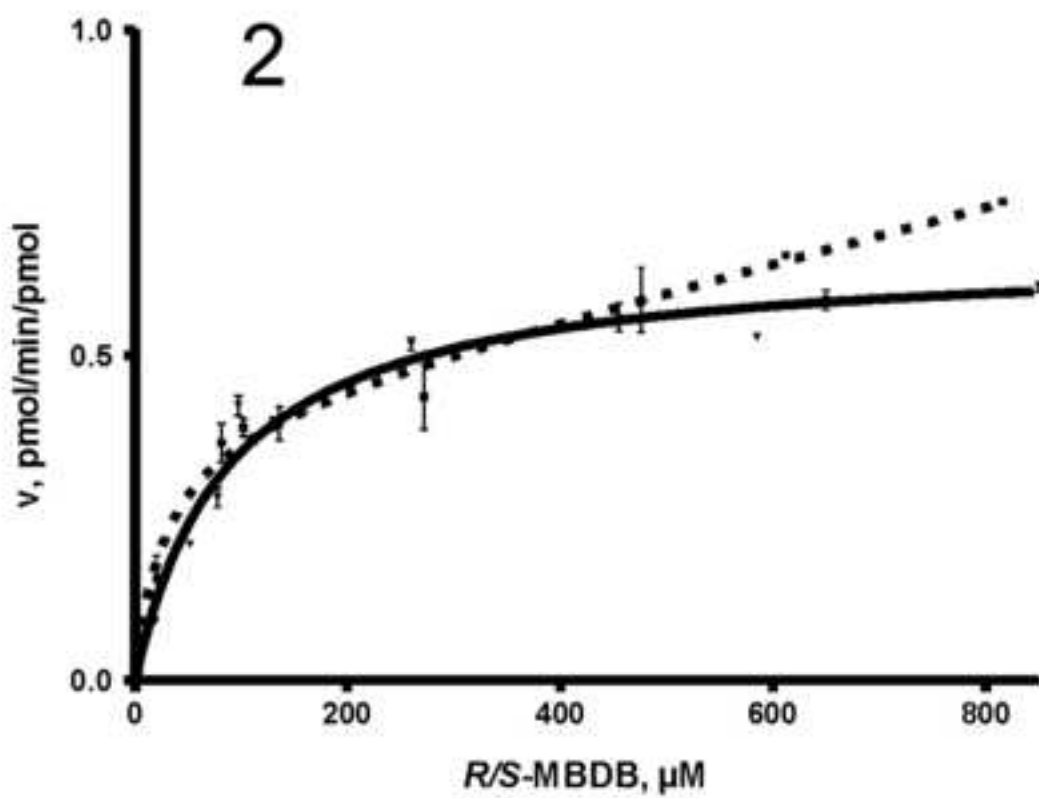
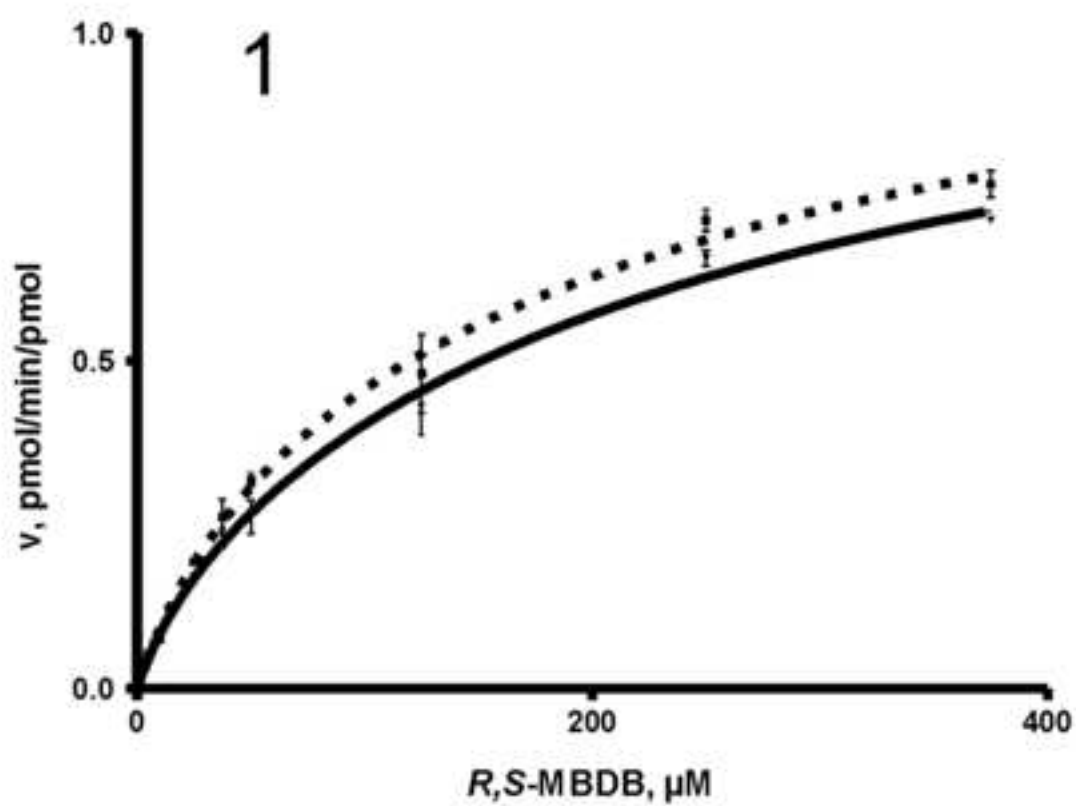


Figure 3D

CYP3A4



Manuscript

Figure 4

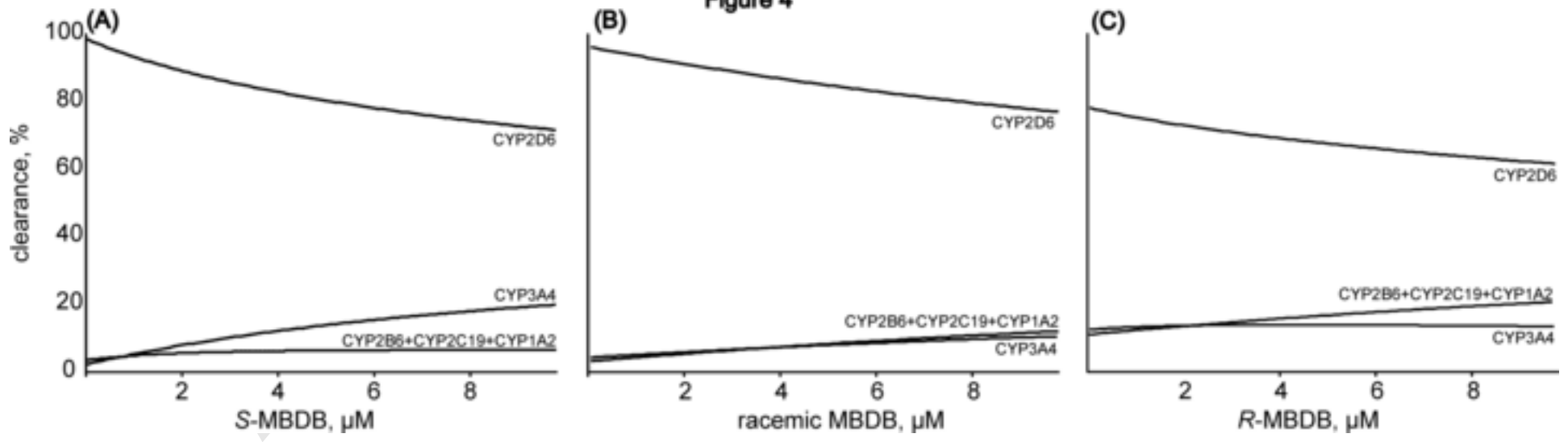


Figure 5

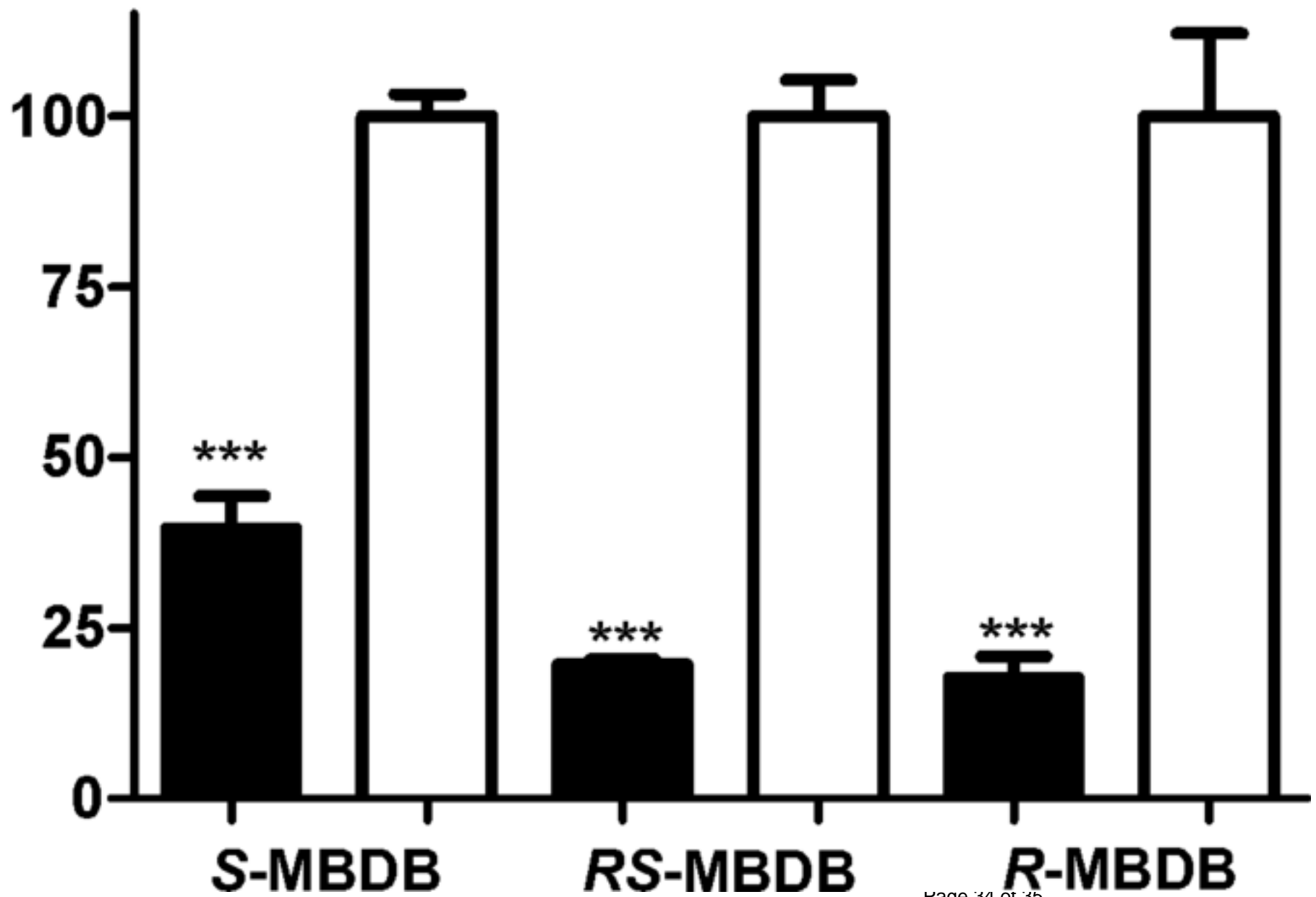


Figure 6

