



HAL
open science

UNBS1450 from as a regulator of signaling pathways involved in proliferation and cell death

Tom Juncker, Marc Schumacher, Mario Dicato, Marc Diederich

► **To cite this version:**

Tom Juncker, Marc Schumacher, Mario Dicato, Marc Diederich. UNBS1450 from as a regulator of signaling pathways involved in proliferation and cell death. *Biochemical Pharmacology*, 2009, 78 (1), pp.1. 10.1016/j.bcp.2009.01.018 . hal-00493488

HAL Id: hal-00493488

<https://hal.science/hal-00493488>

Submitted on 19 Jun 2010

HAL is a multi-disciplinary open access archive for the deposit and dissemination of scientific research documents, whether they are published or not. The documents may come from teaching and research institutions in France or abroad, or from public or private research centers.

L'archive ouverte pluridisciplinaire **HAL**, est destinée au dépôt et à la diffusion de documents scientifiques de niveau recherche, publiés ou non, émanant des établissements d'enseignement et de recherche français ou étrangers, des laboratoires publics ou privés.

Accepted Manuscript

Title: UNBS1450 from *Calotropis procera* as a regulator of signaling pathways involved in proliferation and cell death

Authors: Tom Juncker, Marc Schumacher, Mario Dicato, Marc Diederich



PII: S0006-2952(09)00053-7
DOI: doi:10.1016/j.bcp.2009.01.018
Reference: BCP 10078

To appear in: *BCP*

Received date: 31-10-2008
Revised date: 21-1-2009
Accepted date: 29-1-2009

Please cite this article as: Juncker T, Schumacher M, Dicato M, Diederich M, UNBS1450 from *Calotropis procera* as a regulator of signaling pathways involved in proliferation and cell death, *Biochemical Pharmacology* (2008), doi:10.1016/j.bcp.2009.01.018

This is a PDF file of an unedited manuscript that has been accepted for publication. As a service to our customers we are providing this early version of the manuscript. The manuscript will undergo copyediting, typesetting, and review of the resulting proof before it is published in its final form. Please note that during the production process errors may be discovered which could affect the content, and all legal disclaimers that apply to the journal pertain.

1
2 **UNBS1450 from *Calotropis procera* as a regulator of signaling pathways involved in**
3 **proliferation and cell death**
4
5

6
7 **Authors :** Tom Juncker, Marc Schumacher, Mario Dicato, Marc Diederich
8
9

10
11
12 Laboratoire de Biologie Moléculaire et Cellulaire du Cancer, Hôpital Kirchberg, L-2540
13 Luxembourg, Luxembourg
14
15

16
17
18
19
20
21 **Address correspondence to :** Dr. Marc Diederich, Laboratoire de Biologie Moléculaire et
22 Cellulaire du Cancer, Hôpital Kirchberg, 9 rue Edward Steichen, L-2540 Luxembourg,
23 Luxembourg. Tel : +352-2468-4040 ; Fax : +352-2468-4060 ; E-mail address :
24 marc.diederich@lbmcc.lu
25
26
27
28
29
30
31
32
33
34
35
36
37
38
39
40
41
42
43
44
45
46
47
48
49
50
51
52
53
54
55
56
57
58
59
60
61
62
63
64
65

Abstract

1
2
3
4 Despite significant progress in oncology therapeutics in the last decades, the urge to discover
5 and to develop new, alternative or synergistic anti-cancer agents still remains. For centuries it
6 has been known that the coarse shrub *Calotropis procera* is a very promising source of
7 ascaricidal, schizonticidal, anti-bacterial, anthelmintic, insecticidal, anti-inflammatory, anti-
8 diarrhoeal, larvicidal and cytotoxic chemicals. Different compounds like norditerpenic esters,
9 organic carbonates, the cysteine protease procerain, alkaloids, flavonoids, sterols as well as
10 numerous types of cardenolides have provided this plant for centuries with scientists' interest.
11 The chemical class of cardenolides and their related bioactivity evaluation and structure
12 activity relationship (SAR) studies pointed out their therapeutic utility and led to the
13 discovery of promising drug candidates. Recently the cardiotoxic steroid UNBS1450 **01**
14 (derived from 2-oxovoruscharin **02**) from *Calotropis procera*, was shown to additionally exert
15 an anti-cancer activity. UNBS1450 **01** has been proven to be a potent sodium pump inhibitor,
16 showing anti-proliferative and cell death-inducing activities. This anti-cancer potential of
17 UNBS1450 **01** is achieved by disorganisation of the actin cytoskeleton after binding to the
18 sodium pump at the cellular membrane, by inducing autophagy-related cell death, by
19 repressing NF- κ B activation as well as by down-regulating c-Myc in cancer cells. We aim to
20 review pharmacologically important chemical extracts from *Calotropis procera* and focus
21 more specifically on the anti-cancer activities of UNBS1450 **01**.
22
23
24
25
26
27
28
29
30
31
32
33
34
35
36
37
38
39
40
41
42
43

44 **Keywords :** *Calotropis procera*, cardenolide, Na⁺/K⁺ ATPase, UNBS1450, nuclear factor κ B
45 (NF- κ B), apoptosis, autophagy
46
47
48
49
50
51
52
53
54
55
56
57
58
59
60
61
62
63
64
65

1.) *Calotropis procera* as a source of natural drugs

1.1.) *Calotropis procera*

According to literature, the origin of synthetic drugs development lies within the upcoming of The Industrial Revolution. The potentially more active synthetic products and the increasing economic power of pharmaceutical companies were the main reasons for a preference for these new products compared to the natural compounds from mineral, plant and animal sources used for ages.

However, a significant number of these synthetic drugs are obtained from natural precursors ; it is even estimated that 11 % of the drugs considered as basic and essential by the World Health Organisation (WHO) are strictly of plant origin. Digoxin, quinine, quinidine, vincristine, vinblastine, atropine, morphine and codeine might be the most prominent. Furthermore, according to Yue-Zhong Shu, 60 % of current or future anti-tumor and anti-infectious drugs are of natural origin [1].

Calotropis procera, a member of the Asclepiadaceae, is a woody, broadleaf evergreen coarse shrub, 3 to 5 m tall, widely growing in the tropics. It is distributed in arid to semiarid regions of the Caribbean, Central America, South America, Africa, India and Israel, mainly appearing on plains and in the uplands. For decades, *C. procera*, also referred to as “The Apple of Sodom” has been used especially in traditional folk medicine because of its pharmacologically active compounds found in its roots, bark, leaves and mainly in its latex which exudates from damaged leaves. Meanwhile, chemical extracts from *C. procera* have been shown to have ascaricidal, schizonticidal, anti-bacterial, anthelmintic, insecticidal, anti-inflammatory, anti-diarrhoeal, larvicidal, cytotoxic and analgesic effects, thus explaining a growing demand in today’s medical research for the different parts of the plant [2-5].

1.2.) The latex of *Calotropis procera*

More than 12000 plant species contain latex, a milky fluid in which occurs a wide range of proteins, and for some 1000 species also *cis* –polyisoprene that is the polymeric hydrocarbon of rubber [6]. As the latex is abundant in the green parts of the plant, it is thought to be produced and accumulated as a defense strategy against viruses, fungi and insects. Indeed, besides proteins involved in rubber biosynthesis, latex fluids have been shown to contain proteins implicated in plant defense and oxidative metabolism [7] [8]. Today, latex is

1 considered as a promising source of pharmacologically active molecules that might be
2 chemically modified to improve their effectiveness.

3 With regards to *C. procera*, although the pharmacological potential of its latex has well been
4 proven, only few active latex molecules have been identified until today ; most often latex is
5 either used as an entity or is only poorly processed, mainly in order to eliminate rubber
6 compounds. Usually, the crude latex from *C. procera* is collected from non-cultivated plants
7 by small incisions near the younger leaflets and is mixed 1:1 (v/v) into distilled water. The
8 material is then kept under constant, gentle, agitation in order to prevent it from precipitating.
9 It is maintained at room temperature until being centrifuged at 5000 x g, 10 min at 4 °C. The
10 precipitated material is pooled apart while the supernatant is further dialysed using
11 membranes of 8000 Da cut-off, thus keeping the protein fraction, before being lyophilized.
12 Generally, authors use both, the dialysis liquid containing low molecular weight compounds,
13 called the dialysis latex (DL), and the non dialyzable latex (NDL) obtained after exhaustive
14 dialysis and containing concentrated proteins.

15 Soares *et al.*, were among the first to show benefic, antinociceptive effects of fractionated
16 latex (NDL) [9]. After acetic acid induced writhes in mice, the latex was capable of inhibiting
17 up to 100 % the abdominal constrictions in a dose dependant manner (12,5 to 50 mg/kg).
18 Morphine was used as a positive control (54,5 % of inhibition). Similar results were obtained
19 for formalin-induced paw licking for an hot plate test. In contrast to morphine, they found that
20 the opioid antagonist naloxone did not alter the latex-induced antinociceptive effect.

21 In 2006, Freitas *et al.* , went a bit further and discovered pro- and anti-inflammatory potentials
22 of dialysed and non dialysable latex [10] ; dialysed latex of *C. procera* was shown to increase
23 induced leukocyte, especially neutrophil, migration whereas anti-inflammatory and anti-
24 nociceptive activities were associated to non dialysable latex.

25 Since *C. procera* has been known to be effective against several human diseases, the aim of
26 the work of Ramos *et al.* , was to elucidate larvicidal activities of different fractions of the
27 plant's latex [11]. Their evaluation was based on egg hatching and larval development of
28 *Aedes aegypti*. A 10 mg/mL concentration of NDL was able to completely block egg hatching
29 ; the inhibiting potential of the DL fraction was significantly lower as a 5 times greater
30 concentration (50 mg/mL) was needed in order to achieve 0 % of egg hatching. Both, NDL as
31 well as DL, also triggered severe larvae mortality in a dose and exposure time dependant
32 manner. Chromatography analysis revealed different protein and amino acids of NDL and DL
33 latex, thus delivering promising outlooks for future preparations of *C. procera* latex as a
34 larvicidal compound.

1
2
3
4
5
6
7
8
9
10
11
12
13
14
15
16
17
18
19
20
21
22
23
24
25
26
27
28
29
30
31
32
33
34
35
36
37
38
39
40
41
42
43
44
45
46
47
48
49
50
51
52
53
54
55
56
57
58
59
60
61
62
63
64
65

In contrast to latex fractionation, some authors used air dried latex ; in most examples, latex was extracted from the aerial parts of the plant before being dried under shade (DL, dried latex).

After being triturated 1:1 with gum acacia, DL administered orally to albino rats and guinea pigs inhibited carrageenan and Freund's adjuvant induced edema as well as granuloma formation. Further anti-inflammatory activities of DL resulted in fluid exudation inhibition and in reduced UV-induced erythema onset [12]. Similar results were obtained by Arya *et al* . Shade dried DL, Soxhleted to get methanolic extracts and triturated with gum acacia as seen before, showed anti-inflammatory activity against histamine, serotonin, compound 48/80, bradykinin and prostaglandin mediated inflammatory reactions in induced rat paw edema [13]. The same research team also demonstrated that DL, triturated this time in normal saline, is able to play an antioxidant and anti-hyperglycemic role in alloxan-induced diabetes in rats [14]. Contradictory to these findings, there is some evidence that DL is also capable of inducing pro-inflammatory effects. In 2003, Shivkar *et al* . proved DL to be able to produce dose dependent inflammatory responses resulting in rat paw edema similar to carrageenan. Further studies suggested biogenic amines, especially histamine, to be involved in DL driven inflammation [15].

Similarly, by extracting DL sequentially with petroleum ether and methanol followed by a silica gel chromatography fractionation, Choedon *et al* ., applied an DL treatment on X15-*myc* transgenic, hepatocellular carcinoma developing mice [16]. Not only did they discover an *in vivo* chemopreventive effect of DL, they also noticed that DL has cytotoxic effects on Huh-7 and COS-1 cancer cell lines. By chromatography separation, they isolated a polar fraction responsible for the observed cytotoxic potential. Apoptosis analysis revealed induced DNA fragmentation as a mechanism.

1.3.) Ethanolic, methanolic and aqueous extracts

Phytochemically, the plant has been investigated since the 1960's, especially for cardenolides [17] [18], triterpenoids [19] [20], anthocyanins [21] and hydrocarbons [22].- Besides the use of plant latex, aqueous, methanolic, ethanolic and other organic plant extracts from different parts of the plant, namely flowers, buds, roots, stems and leaves, were among the very first approaches to develop natural drugs for classical and alternative medicine. In 1979, Malik and Chughtai described antimicrobial activity against pathogenic bacteria [23]. Moreover, organic extracts of *C. procera* were also shown to possess nematocidal [24] [25],

1 larvicidal [26], antifertility [27] and even anti-cancer potentials [28] [29]. In 1987, Mascolo *et*
2 *al.* further elucidated the biological properties of *Calotropis procera* and, using ruminant
3 animal models, discovered anti-inflammatory, analgesic, antimicrobial and antipyretic
4 activities in extracts from *C. procera* flowers. In the late 1980's, Fenado *et al.* , established a
5 standard method to get crude aqueous extracts (CAE) from powdered *C. procera* flowers
6 [30]. Similarly, in 1994 Asuzu and Onu managed to get crude methanolic extracts (CME)
7 from *C. procera* using a Soxhlet apparatus [31]. Others used filtered ethanolic extracts to
8 elucidate the plant's pharmacological potential [32] [33].

9
10
11
12
13
14
15
16
17
18
19
20
21
22
23
24
25
26
27
28
29
30
31
32
33
34
35
36
37
38
39
40
41
42
43
44
45
46
47
48
49
50
51
52
53
54
55
56
57
58
59
60
61
62
63
64
65

Meanwhile, the ethanolic extracts of flowers, buds, roots, stems and leaves were discovered to have a schizontocidal potential *in vitro*. The different fractions of *Calotropis procera* showed dose-dependant inhibitory effects on chloroquine sensitive and resistant *Plasmodium falciparum* strains. Antimalarial screening had been performed according to the method of Ang *et al.* [34] ; parasitaemia had been adjusted to 1-1,5 % before different concentrations of *C. procera* fractions were added. After an incubation time of 36 h, each sample was analysed under the microscope.

Furthermore, both, aqueous and methanolic extracts of powdered *Calotropis procera* flowers, were shown to possess time-dependent anthelmintic activities *in vitro* [35]. Based on nematode egg counting in sheep feces, the authors confirmed their observed results *in vitro* : a maximum of 88,4 % egg reduction (ECR, egg count percent reduction) had been recorded in sheep treated with CAE and 77,8 % in sheep treated with crude powder. CME had been proven to be less effective.

Besides further insecticidal properties [36], organic *C. procera* extracts also possess interesting cytotoxic effects. Compared to the reference compound cisplatin (IC₅₀ 0,9 µg/mL), Smit *et al.* demonstrated that ethanolic flos extracts (IC₅₀ 1,4 µg/mL) have potent growth inhibition capacities when used on COLO 320 tumour cells.

More specific spectral data analysis of organic extracts of the plant revealed the presence of a norditerpenyl ester, Calotropterpenyl, two pentacyclic triterpenoids, calotropursenyl acetate and calotroprodenyl acetate as well as an organic carbonate, namely 2-propenyl-2'-hydroxyethyl carbonate [37] [38] (**Figure 1**).

1.4.) Procerain

By further method standardizations and working condition optimizations, the next step in characterizing the plant's pharmaceutical potentials consisted in the isolation of new, specific

1 and pharmacologically important proteins and compounds, especially with an enzymatic
2 activity.

3 By default, plants are usually rich sources of various kinds of proteases, enabling protection,
4 development of the plant, ripening of its fruits [39], nutritional reserve, degradation of seed
5 storage proteins thus allowing germination [40], activation of proenzymes as well as
6 elimination of defective proteins [41]. Proteolytic enzymes from plant sources, are of interest
7 for the pharmaceutical research as they have been proven to be active over wide ranges of
8 temperature and pH [42]. Consequently, an important number of proteases have been isolated
9 from latices, fruits and seeds. Among these, most belong to the cysteine super family, one of
10 five catalytic types of proteases [43]. Concerning the different *Calotropis* species, since 1979
11 it has been known that the latex of *Calotropis gigantea* contains four cysteine proteases,
12 namely Calotropin FI, FII, DI and DII [44]. More recently, Dubey *et al* . purified a new
13 cysteine protease from *Calotropis procera*, named procerain.
14

15 Procerain was isolated by applying a 50 % ammonium fractionation of crude, gumless latex
16 followed by CM-sepharose and SP-sepharose cation exchange chromatographies. Different
17 physical and chemical properties were then analysed : an SDS-PAGE electrophoresis revealed
18 an average M_r of 28,8 kDa for procerain, putting it in the common molecular mass range of
19 20-35 kDa for plant cysteine proteases. No carbohydrate could have been determined by the
20 phenol sulfuric acid method [45] thus differing procerain from glycoproteins. An isoelectric
21 point of 9,32, defined by isoelectric focusing on polyacrylamide gel, indicates a
22 predominance of basic amino acid residues. Total amino acid analysis revealed the presence
23 of seven cysteines, one free and six forming disulfides [46], eight tryptophan and twenty
24 tyrosine residues. In addition to proteolytic activity against different natural substrates such as
25 casein, azocasein, azoalbumin and haemoglobin, procerain also showed hydrolytic activity
26 against synthetic substrates. The enzyme's activity was best over a broad pH 7,0-9,0 range
27 and together with its high stability with respect to temperature, denaturants and organic
28 solvents, this makes it a very useful tool for food and pharmaceutical industry.
29

30 1.5.) Cardenolides

31 Since the 1960's it has been known that the principal toxic components in *C. procera*, capable
32 of causing death in mammals when reaching high concentrations, are cardenolides [47].
33 Chemically, cardenolides, cardiac glycosides named after their capacity to influence heart
34 beat, are 5 β H,14 β -hydroxy α,β -unsaturated γ -lactones widely distributed in plants. In 1983,
35

1 Erdman was among the first to measure individual nutrient and cardenolide concentrations in
2 unextracted as well as in extracted *C. procera* [48]. Several cardenolides were positively
3 identified : ascleposide, calactin, calotoxin, calotropin, calotropagenin, coroglaucigenin,
4 proceroside, usharidin and uzarigenin. Recently, with the aim to use cardenolides as potential
5 anti-cancer agents, the list of cardiotoxic glycosides found in *Calotropis procera* has been
6 enlarged by 2-oxovoruscharin **02**, a derivative of voruscharin [49]. However, due to its high
7 toxicity observed in mice, chemical modifications were necessary in order to improve
8 tolerance *in vivo*. The outcome, named UNBS1450 **01**, not only showed reduced toxicity, but
9 also a severely increased therapeutic anti-cancer activity [50].

10 **Figure 2** gives a short overview of how *Calotropis procera* can be used in pharmaceutical
11 science, either by applying rather simple methods, to extract for example latex, or by more
12 sophisticated approaches seeking to isolate specific compounds like cardenolides.
13
14
15

16 **2.) Bioactivity of cardenolides**

17 2.1.) Effect of cardenolides on the sodium pump

18 Frequently named sodium pump, the Na,K-ATPase is an integral-membrane protein with both
19 an enzymatic and a transporter function : in the conformational state E1, the phosphorylated
20 protein binds three intracellular Na⁺. These Na⁺ ions are then released into the extracellular
21 fluid, in exchange to 2 external K⁺ ions and phosphate formation (state E2). With the Na⁺/K⁺
22 gradient being implicated in the regulation of animal cell volume, in lyses prevention, in
23 membrane potential control, in pH homeostasis and in energy delivery for ion transport, the
24 sodium pump is essential for cell viability and is thus ubiquitously expressed throughout the
25 different tissues [51] [52].

26 The Na,K-ATPase is a heterodimer formed of an α and β subunit. The α subunit, with a
27 molecular mass of 106 kDa, contains a ten segment transmembrane domain (M) and three
28 different cytosolic domains, namely a nucleotide binding domain (N) binding ATP, a
29 phosphorylation domain (P) and an actuator domain (A). The abundantly glycosylated β
30 subunit of 40 kDa has a single transmembrane segment, a short intracellular N-terminal and a
31 larger extracellular site. In contrast to the catalyzing α subunit, the β subunit is required for
32 the biogenesis and activity of the holoenzyme. A third subunit FXYD has been reported to be
33 associated to the α and β subunits in some tissues.
34
35
36
37
38
39
40
41
42
43
44
45
46
47
48
49
50
51
52
53
54
55
56
57
58
59
60
61
62
63
64
65

1
2
3
4
5
6
7
8
9
10
11
12
13
14
15
16
17
18
19
20
21
22
23
24
25
26
27
28
29
30
31
32
33
34
35
36
37
38
39
40
41
42
43
44
45
46
47
48
49
50
51
52
53
54
55
56
57
58
59
60
61
62
63
64
65

Endogenous and exogenous cardiac glycosides, for example cardenolides, act by binding to extracellular H₁-H₂, H₃-H₄ and H₅-H₆ loops of the catalytic α subunits of sodium pumps. It had been shown that these cardenolide compounds are tightly fixed to the E2 conformational enzyme state, leading to inactivation [53]. E2-phosphoenzyme-cardiotonic compound complexes were found to be formed irreversibly. With varying K_d values, the inhibition complexes are probably internalized and degraded. Inhibitors of the Na⁺,K⁺ transporter lead to an increase of the cytosolic Na⁺ concentration and are thus influencing the thermodynamics of the Na⁺,Ca²⁺ exchange pump finally resulting in an increased Ca²⁺ concentration in sarcoplasmic reticulum [54] (Na⁺-Lag hypothesis).

However, recent studies suggest that this Na⁺ pump inhibition is not necessary to obtain an inotropic effect on myocytes [55]. By interacting with cardiac glycosides, the Na⁺-K⁺ pump complex has been shown to act as a signalosome. Various intracellular signaling pathways are responsive to cardiac glycoside binding ; Ca²⁺ could play the role of a second messenger, the phosphatidylinositide 3'-kinase and protein kinase B can be activated as well as the SRC-EGFR-RAS-RAF-ERK cascade. In this way, cardiac glycosides may influence cell proliferation, cell differentiation and finally cell death by apoptosis (**Figure 3**).

2.2.) Cardenolide derivatives and their structure-activity-relationship

Recently, Toxicaroside D **03**, isolated via bioassay-guided fractionation from a ethanolic stem extract of the rainforest tree *Antiaris toxicaria*, exhibited cell proliferation inhibition in different cancer cell lines together with 10 other cardenolides purified from the same source. Concerning structure-activity relationship, a reduction of 19-CHO and mono-glycosidation of the 3-hydroxy group resulted in a higher cytotoxicity to different cancer cell lines by factor 2 and over 100 respectively. In contrast, a β -hydroxylation of carbon 12 reduced the induction of apoptosis [56]. However, an additional acetoxy group did not modify the cytotoxicity [57, 58]. These observations had been confirmed in a previous publication [57]. Structural modification of the core unit as an additional alcohol group or an epoxy group at C8 or a double bond between C16 and C17 led to a decrease of cytotoxicity [58]. Additionally, Ueda *et al.* isolated 15 cardenolides from the Vietnamese medicinal plant *Streptocaulon juvenas*. They proved that di-glycosidation did not alter or even decrease the activity. Hence, the hydroxyl groups at C1 and C5 were important for the anti-proliferative property. These authors concluded that bioactivity of the isolated cardenolides-set depends on the

1 hydrophilicity of the sugar unit linked to C3-OH because a free hydroxyl C2' and acetylating
2 of C3'OH reduced the cytotoxicity [57].

3 The research group of O'Doherty developed a novel stereoselective synthetic method to
4 glycosylate the aglycone core units of cardenolides. The comparative study of the synthesized
5 mono-, di- or tri-saccharide derivatives **05-07** of digitoxigenin **04** showed that the linkage of a
6 monosaccharide increased the bioactivity [59], which confirmed the previously described
7 studies by Yao and Kadota [56, 57]. The higher anti-proliferative properties of the tri-
8 saccharide derivatives of digoxin and gitoxin underlined this result [60]. In detail, the
9 stereocenter at C2' of the sugar unit plays a crucial role in cytotoxicity, as the unnatural
10 epimers of the cardenolides lose almost their complete apoptotic activity against cancer cells
11 [61].

12 The anti-inflammatory bioactivity of cardenolides proved to be sensible on chemical
13 modifications of the core unit. Although, an additional acetoxy function at C16 doesn't alter
14 the observed properties, an additional alcohol group at C8, modification of the C14 hydroxyl
15 group or a double bond between C16 and C17 resulted in a lower anti-inflammatory activity
16 [58].

17 A low anti-proliferative activity is not necessary for the reversal of multi-drug resistance
18 (MDR) as one cardenolide, even exhibiting a cytotoxicity at a concentration range up to 77
19 mM, might serve as potential future lead MDR-cancer reversal agent due to the calcein
20 accumulation in MDR human ovarian cancer 2780AD cells [58]. This compound had been
21 isolated first by Neumann and its structure determination had been carried out by the research
22 teams of Reichstein and Yamauchi [62-64] (**Figure 4** and **Figure 5**).

23 Interestingly, in the case of the hemi-synthetic derivative **01** of 2''-oxovoruscharin **02**, the
24 reduction of the carboxyl function into a primary alcohol did not result in a higher
25 cytotoxicity but the *in vivo* toxicity was reduced by factor 10 [49] (**Figure 4**).

26 The design of novel anti-cancer drugs derived from natural products is still a matter in the
27 development of potent cancer therapeutics. There is still a need and potential in further
28 investigation of natural sodium pump inhibitors.

29 2.3.) Pharmaceutical activity of cardenolides

30 With chronic heart failure being a widespread health problem in modern society, there is an
31 urge for new therapy drugs. According to today's knowledge, arterial hypertension and
32 coronary artery disease are among the main causes for the development of heart failure

1 diseases. Constant exposure to high concentrations of hypertension-producing hormones like
2 epinephrine, drives both, cardiac and arterial myocytes into molecular remodeling for
3 example by internalizing β -adrenergic receptors, by altering G protein expressions, by
4 lowering K^+ channel expressions and by increasing Na^+/Ca^{2+} pumps, thus favoring severely
5 reduced intrasarcoplasmic Ca^{2+} concentrations [65].
6
7

8
9 Exogenous as well as endogenous cardiac glycosides act according to the Na^+ -Lag
10 hypothesis : as seen before, partial inhibition of the Na^+-K^+ pump by these cardiac glycosides
11 results in higher Na^+ concentrations leading to increased Ca^{2+} concentrations thus increasing
12 cardiac output. Certain vertebrates endogenously produce cardiac glycosides with a steroid
13 core, namely the cardenolides Ouabain and Digoxin as well as the Bufadienolides
14 Marinobufagenin, Telocinobufagin and 19-Norbufalin. Moreover, since the 1990's there is
15 increasing interest in the possible role of the sodium pumps in myocytic hypertrophy [66]. On
16 *in vitro* myocyte cultures, inhibition of Na^+,K^+ -ATPases by cardiotoxic compounds like
17 ouabain resulted in increased contractility, growth, protein synthesis, early proto-oncogene
18 responses, AP-1 and NF- κ B transcription factor activations thus explaining the beneficial
19 effect of digitalis, another cardiotoxic steroid, on heart failure. Despite being the oldest drug
20 in cardiovascular medicine, digitalis is still being used in contemporary heart failure
21 treatments.
22

23
24 Due to cardiotoxic steroid-induced signaling pathways, the various endogenously synthesized
25 cardiac glycosides constitute a new class of steroid hormones, regulating blood pressure,
26 arterial tension and insulin release.
27

28
29 Because of the evidence that cardiac glycosides might influence cell proliferation and
30 differentiation and that cancer cells have enhanced Na^+,K^+ activity, further studies trying to
31 elucidate the effects of cardiac glycosides on tumor growth came up. In 2001, Stenkvist
32 discovered a reduced death rate (6 % versus 34 %) of breast cancer patients when treated for a
33 long period (22 years) with digitalis glycosides [67]. In the same context, leukemia has been
34 shown to be less frequent in a group of patients treated with cardiac glycosides for heart
35 failure. Also bufalin, a bufadienolide cardiac glycoside, has been used for ages in Chinese
36 medicine to treat hepatocarcinoma and leukemia. Meanwhile, numerous studies indicated that
37 cardiac glycosides are able to block several cancer cell types in the G_2/M cell cycle phase [68]
38 [69]. In order to further evaluate the cytotoxic effects of cardiac glycosides, it is of great
39 importance to develop non-cardiotoxic cardiac glycosides. UNBS1450 **01**, a semi-synthetic
40 derivative of 2-oxovoruscharin **02**, one of the first non-cardiotoxic compounds, first described
41 in 2005, just entered phase I of clinical trials (**Table 1**).
42
43
44
45
46
47
48
49
50
51
52
53
54
55
56
57
58
59
60
61
62

3.) UNBS1450 and its anti-cancer activity

3.1.) The impact of UNBS1450 on the Na⁺.K⁺-ATPase isozymes

Several isozyme forms are known for Na⁺,K⁺-ATPases, depending on tissue and cell type : 4 α and 3 β isoforms have been identified so far. Until today, severely increased expression of the α 1 subunit has been associated to the clinical patterns of non-small cell lung cancers (NSCLC) and glioblastoma [70] [71].

For both studies, sodium pump inhibition assays were performed using a heterologous protein expression system. Given the advantage of producing high amounts of recombinant Na⁺/K⁺-ATPases, baculovirus-transfected Sf-9 insect cells expressing α 1 β 1, α 2 β 1 and α 3 β 1 isozymes were used to analyse the inhibitory capacities of several cardenolides, among which UNBS1450 **01**. When compared to ouabain and digoxin, UNBS1450 **01** showed a greater Na⁺/K⁺-ATPase isozyme inhibitory potential. The α 3 β 1 dimer was mostly affected by an UNBS1450 inhibition, with a determined Ki of 3,2 nM. The α 2 β 1 and α 1 β 1 isozymes were also inhibited by UNBS1450 **01**, but to a lesser extent, with Ki values of 15 and 160 \pm 70 nM respectively. Compared to classic cardenolides, the double-linked sugar moiety as well as the trans-conformational steroid structure seem to further potentiate the inhibitory activity of UNBS1450 **01**, rendering this cardenolide especially promising for additional anti-cancer studies based on modified cell proliferation, differentiation and cell death by inhibited sodium pump driven signaling.

According to recent findings, sodium pump signaling through UNBS1450 **01** binding leads to disorganization of the actin cytoskeleton, increased non-apoptotic cell death by autophagy, down-regulation of c-Myc in cancer cells, NF- κ B deactivation and general modifications of the nucleolar morphology.

3.2.) The impact on the NF- κ B signaling pathway

As many typical cancer cell lines, A549, non-small cell lung cancer cells, show constitutive NF- κ B pathway activation, and thus become able to escape cell death by apoptosis, necrosis, autophagy, senescence, mitotic catastrophe and paraptosis [72]. NF- κ B activation favors multidrug resistant cancer development.

1 Mijatovic *et al* . were among the very first to investigate a possible repressive potential of
2 cardiotonic steroids and especially cardenolides on constitutive NF- κ B activation [73]. In
3 their work they used a new hemi-synthetic derivative of 2-oxovoruscharin **02**, a compound
4 recently identified by themselves in *Calotropis procera* and isolated by liquid
5 chromatography from methanolic extracts from the root barks of *C. procera*. In contrast to
6 stereotyp cardenolides, the chemically modified 2-oxovoruscharin named UNBS1450 **01**
7 shows a double-linked sugar moiety and a trans-conformational steroid core.

8
9
10
11
12 As a first result, they managed to show that UNBS1450 **01** is able to influence NF- κ B activity
13 in human A549 cells. In fact, a 24-hour treatment with UNBS1450 **01** with a concentration of
14 10 nM was sufficient to point out induced accumulation of I- κ B β , however not of I- κ B α . For
15 the latest, phosphorylation levels were decreased after 4 to 8 hours post-treatment. The
16 expression of cdc34, an enzyme implicated in I- κ B α ubiquitination, was also decreased.
17
18 Further NF- κ B binding (Trans-AM) as well as NF- κ B reporter gene (luciferase reporter
19 plasmid construct pNF- κ B-Luc) assays confirmed the *in vitro* inhibitory potential of
20 UNBS1450 **01** on A549 tumor cells. Secondly, preliminary *in vivo* studies revealed increased
21 survival of A549 orthotopic xenograft-bearing nude mice when treated with different
22 concentrations of the maximum tolerated dose of UNBS1450 **01**.

33 3.3.) The effect of UNBS1450 on cell proliferation and cancer

34
35
36
37 Starting with *in vitro* anti-proliferation assays in 2005, Van Quaquebeke *et al*. analysed
38 cytotoxicity levels of several cardenolides, among which UNBS1450 **01**, on 57 human cancer
39 cell lines ; for each compound average IC₅₀ values were determined by MTT assays after 72 h
40 of incubation. As reference drugs, a tubulin inhibitor (taxol) and a topoisomerase I inhibitor
41 (SN-38) were chosen. Concerning the individual sensitivity of each human cancer cell line,
42 significant differences were observed between UNBS1450 **01**, taxol and SN-38 suggesting a
43 different antitumor mechanism for UNBS1450 **01**. In terms of average growth inhibition
44 however, UNBS1450 **01** was proven to be as potent as taxol, with a mean IC₅₀ of 2,7 nM for
45 UNBS1450 **01** and 2,5 nM for taxol. SN-38 was significantly less potent. Furthermore, when
46 applied on multidrug resistant tumor bladder cells, UNBS1450 **01** showed rather
47 astonishing capacities in inhibiting cell growth : vincristine and adriamycin resistant tumor
48 cells forced taxol to reach concentrations of 10000 nM to become cytotoxic whereas
49 UNBS1450 **01** became effective at 45 nM. Complementary to these data, UNBS1450 **01** also
50
51
52
53
54
55
56
57
58
59
60
61
62
63
64
65

1 showed cytotoxic effects on rat glioma, mouse mammary carcinoma and melanoma cells but
2 at a far less extent when compared to UNBS1450 **01** anti-tumor effects in human cancer cells.
3 This feature could relate to the double mutation observed in the alpha-1 subunit of rodent
4 sodium pump.
5

6
7 More recently, the observed findings were confirmed : UNBS1450 **01** is also capable of
8 repressing *in vitro* growth of A549 tumor cells as well as growth and migration of
9 glioblastoma cell lines.
10

11 UNBS1450's *in vivo* anti-cancer activity has been investigated so far by tumor growth
12 analysis in xenograft models. Generally, by administering UNBS1450 **01** chronically to nude
13 mice bearing orthotopic xenografts of NSCLC and glioblastoma cell lines, cytotoxicity of this
14 hemi-synthetic cardenolide has been determined by intraperitoneal or per os injections. In
15 both cases, the maximum tolerated dose (MTD) had been previously elucidated acutely in
16 healthy mice. When compared to classical cardenolides such as ouabain and digoxin as well
17 as to its precursor, 2-oxovoruscharin **02**, UNBS1450 **01** showed significantly increased MTD
18 values : for ouabain and digoxin, MTD values were 5 mg/kg and 10 mg/kg respectively,
19 whereas for UNBS1450 **01** the MTD value raised up to 120 mg/kg. As a result, chronic
20 administration of UNBS1450 **01** was realized with different concentrations, from a 32 to an 8-
21 fold reduced MTD [73]. Interestingly, UNBS1450 **01** at concentrations from 5 to 20 mg/kg
22 was proven to be able to increase grafted mice survival. In control mice, about 20 days were
23 sufficient to bring the mouse population down to 45 %. In contrast, mice which had been
24 chronically administrated (12 times) with 10 mg/kg of UNBS1450 **01** showed best results,
25 with a population down to 45 % only after 40 days. Higher concentrations (20 mg/kg) seemed
26 to be less encouraging since the outcome was less promising than for 10 mg/kg, probably due
27 to slight toxic effects.
28

29 Comparable results were obtained for *per os* administrations of UNBS1450 **01**, nevertheless
30 requiring higher dosages. Oral uptake of UNBS1450 **01** at 80 mg/kg significantly increased
31 mouse survival. Whereas the 50 % survival barrier was broken shortly after 20 days post-
32 tumor graft in control mice, with 80 mg/kg of UNBS1450 **01** this point was delayed to day
33 40.
34

35 A principal characteristic of many cancer cells is their high invasiveness ; glioblastoma cells
36 for instance are active, "self-propelled" brain cancer cells, highly capable of invading brain
37 tissue by shape and volume modifications [74]. Today it is believed that ion transport plays
38 an important role in enabling cancer cell migration [75]. Until very recently, the impact of the
39 Na^+, K^+ -ATPase in cancer cell migration remained unexplored. In early 2008, Lefranc *et al* .
40
41
42
43
44
45
46
47
48
49
50
51
52
53
54
55
56
57
58
59
60
61
62
63
64
65

1
2
3
4
5
6
7
8
9
10
11
12
13
14
15
16
17
18
19
20
21
22
23
24
25
26
27
28
29
30
31
32
33
34
35
36
37
38
39
40
41
42
43
44
45
46
47
48
49
50
51
52
53
54
55
56
57
58
59
60
61
62
63
64
65

tried to establish a link between glioblastoma cell migratory invasion, sodium pump and cardenolide administration [71]. At first, they demonstrated that in human glioblastoma cells the $\alpha 1$ subunit of the Na^+, K^+ -ATPase is overexpressed when compared to normal human brain tissue. Using immunofluorescent staining, they were able to show that $\alpha 1$ subunits co-localize with caveolin-1 in the cytoplasmic protrusions of U373-MG glioblastoma cells.

Additionally, UNBS1450 **01** was able to exert a cytotoxic effect on human U373-MG cells ; the same was true for rat C6 cells, but to a lesser extent. For U373-MG, concentrations of around 100 nM of both UNBS1450 **01** as well as ouabain rendered cell survival nearly impossible. For rat C9 cells, ouabain was practically ineffective whereas high concentrations reaching 10 μM were required to completely abolish cell viability. An impact of UNBS1450 **01** on intracellular ATP concentrations in human glioblastoma cells had then been suggested. Next, computer-assisted phase-contrast microscopy analysis permitted to gain further insights in cellular proliferation, morphology and motility as well as on ion homeostasis. They discovered that in the presence of 10 nM UNBS1450 **01**, U373 cells are well capable of undergoing mitosis, but fail to divide into daughter cells and to form lamellipodia. Nevertheless, the observed, round-shaped U373 cells remained alive for several days (mitochondria staining). However, contrary to a possible hypothesis, the administration of 10 nM of UNBS1450 **01** did not result in either an increased Ca^{2+} nor an increased Na^+ concentration, which at the same time constitutes one of the major advantages of UNBS1450 when compared to other cardiac glycosides like digitalis. Increasing intracellular Ca^{2+} favors arrhythmias in otherwise healthy people. The observed changings were probably due to irreversibly modified actin cytoskeleton, thus explaining reduced migratory capacities of these human glioblastoma cells (**Figure 6**).

3.4.) UNBS1450-induced cell death

- by apoptosis

It has been reported in literature that cardiac steroid glycosides are *a priori* potentially able to induce cell death by apoptosis. For example it has been observed in vitro that different leukemia cell lines such as THP-1 [76], K562 [77], HL-60 , U937 and ML1 [78] undergo apoptosis when treated with different concentrations of Bufalin or Digoxin. However, when treated with rather low nanomolar doses of these cardiac glycosides, it might preferentially stimulate differentiation and proliferation. It is believed that nanomolar concentrations lead to

1 low-frequency oscillations of Ca^{2+} concentrations favoring NF- κ B activation and protection
2 against apoptosis whereas higher concentrations would lead to apoptosis due to sustained,
3 high levels of Na^+ and Ca^{2+} [79].
4

5 In contrast to many other cardiac steroids, UNBS1450 **01** does not seem to induce cell death
6 by apoptosis *in vitro*, at least when working with adherent cell lines (evidence provided by
7 flow cytometry analyses after propidium iodide and Annexin V staining). To our knowledge,
8 the entire studies on UNBS1450's anti-proliferative and anti-cancer activity has been carried
9 out on solid tumor cell lines. UNBS1450 **01** stimulation has been shown to induce non-
10 apoptotic cell death [71] [80].
11
12
13
14
15
16

17
18 - by autophagy
19

20 Recent studies on UNBS1450-induced cell death claim pro-autophagic effects to be
21 responsible for the observed cytotoxic potential [71]. It has been reported that during
22 autophagy, besides apoptosis, one of the two self-destructive processes, intracellular
23 organelles are enclosed in characteristic double- or multi-membraned vacuoles which finally
24 fusion with lysosomes thus leading to degradation [81]. Together with apoptosis, cellular
25 "self-eating" has the aim to eliminate superfluous, damaged or aged cells or organelles like
26 mitochondria and endoplasmic reticulum. Moreover, being implicated in macromolecule
27 catabolism, autophagy helps cells in overcoming stress situations, thus avoiding probable cell
28 death by apoptosis for instance. Depending on the situation, autophagy sometimes constitutes
29 an alternative pathway to apoptosis, sometimes a possibility to escape apoptosis.
30
31
32
33
34
35
36
37

38 In 2006, first studies indicating UNBS1450-induced autophagy in cancer cells appeared [80].
39 Working on NSCLC cell lines, cell death was indeed relevant after treatments with
40 UNBS1450 **01**: a 24 h treatment with 100 nM of UNBS1450 reduced cell viability to about 70
41 %, when prolonged to 72 h, 10 nM were sufficient to obtain similar results. Consequently,
42 PARP cleavage analysis permitted to exclude cell death through apoptosis, as PARP remained
43 intact. Complementary performed Tunel assays ultimately confirmed the absence of apoptotic
44 cell death. Cell cycle analysis revealed increased percentages of cells in S and G₂ phases
45 whereas microscopy images clearly showed severe cytoplasmic vacuole formation. Further
46 Mijatovic *et al.* made clear that UNBS1450 **01** induces Hsp70 downregulation thus rendering
47 possible lysosomal membrane permeabilization, typically inhibited in lung cancer cells by
48 heightened levels of Hsp70 which constitute a prosurvival function. Lysosomal
49 permeabilization is a known indicator of cell death through autophagy ; these findings of 2006
50
51
52
53
54
55
56
57
58
59
60
61
62
63
64
65

1 then strengthened the hypothesis of non-apoptotic cell death by “self-eating” in UNBS1450
2 treated cancer cells.

3 In the same context UNBS1450 **01** has been assigned to induced cell death through autophagy
4 in different human glioblastoma cell lines [71]. In a first step, acridine orange staining was
5 used in order to quantify acidic vesicular organelles whose abundance is tightly associated to
6 autophagy. Indeed, the presence of nanomolar UNBS1450 **01** significantly increased staining
7 in U373-MG and U87-MG cells (from 3 to 42 and from 4 to 65 %). At the same time, the
8 expressions of LC3 and beclin-1, two specific autophagy markers, were found to be
9 stimulated by UNBS1450 **01**.

10 Besides lung cancer and glioblastoma cell lines, UNBS1450 **01** has also been found to induce
11 probably autophagy-related cell death in human prostate cancer cell lines by severe nucleolar
12 targeting [82]. In fact, UNBS1450 **01** efficiently inhibited apoptosis-resistant PC-3 prostate
13 cancer cell growth at 100 nM, without caspase-3 and caspase-9 activation and PARP
14 cleavage. Intracellular Ca^{2+} concentrations were not modified, in contrast to cellular ROS
15 load. Not only did UNBS1450 **01** (10 and 100 nM) severely increase ROS production,
16 computer-assisted phase-contrast microscopy revealed that it again completely disorganized
17 the actin cytoskeleton as seen before and disturbs nucleolar morphology. The nucleolus
18 domain constitutes the site of ribosome biogenesis and is thus indispensable to cell survival. It
19 has been reported that nucleolar regions are of great importance in cancer cells as it has been
20 proven that tumor cells retain tumor suppressors, like p53 and MYC for instance, inside the
21 nucleoli. The observed impairments of CDK and Myc protein expressions might thus be
22 mechanisms of nucleolar disorganization and induced autophagy (**Figure 7**).

41 **4.) Conclusion**

42 Taken together, these results suggest that the novel hemi-synthetic cardenolide UNBS1450 **01**
43 from *Calotropis procera* is able to repress cancer cell proliferation and even induce cell death.
44 Despite the fact that the plant’s beneficial effects on many different pathologies have been
45 admitted many centuries ago, the real breakthrough is still to come. Both, the entire latex as
46 well as organic extracts, might well have proven their usefulness in treating different clinical
47 entities, only recent advances in research revealed the true potential lying within *C. procera*.
48 By chemically modifying a novel cardenolide isolated from this tropical plant, researchers
49 discovered with UNBS1450 **01** a new and very promising weapon in cancer therapy.
50
51
52
53
54
55
56
57
58
59
60
61
62
63
64
65

1
2 In contrast to many other anti-cancer agents, UNBS1450 **01** does not induce apoptosis but
3 autophagy, at least in solid tumor cells. Essentially by deactivating NF- κ B, downregulating
4 Hsp70 and by modifying nucleolar structure, UNBS1450 **01** leads to vacuole formation, actin
5 cytoskeleton impairment and finally cell death.
6

7 Further insights, particularly concerning its usefulness in leukemia treatment, still remain to
8 be investigated.
9
10
11
12
13
14
15
16
17
18
19
20
21
22
23
24
25
26
27
28
29
30
31
32
33
34
35
36
37
38
39
40
41
42
43
44
45
46
47
48
49
50
51
52
53
54
55
56
57
58
59
60
61
62
63
64
65

Acknowledgements

The authors thank C. Cerella and MH. Teiten for critical reading. TJ is a recipient of an Aide à la Formation-Recherche (AFR) fellowship and MS is a recipient of a Télévie fellowship. Dr Diederich's research at the Laboratoire de Biologie Moléculaire et Cellulaire du Cancer (LBMCC) is financially supported by « Recherche Cancer et Sang » foundation, by the « Recherches Scientifiques Luxembourg » association, by « Een Häerz fir kriibskrank Kanner » association, by the Action Lions « Vaincre le Cancer » association and by Télévie Luxembourg.

5. References

- [1] Shu YZ. Recent natural products based drug development: a pharmaceutical industry perspective. *J Nat Prod* 1998;61:1053-71.
- [2] Sharma P, Sharma JD. Evaluation of in vitro schizontocidal activity of plant parts of *Calotropis procera*--an ethnobotanical approach. *J Ethnopharmacol* 1999;68:83-95.
- [3] Dewan S, Sangraula H, Kumar VL. Preliminary studies on the analgesic activity of latex of *Calotropis procera*. *J Ethnopharmacol* 2000;73:307-11.
- [4] Kumar S, Dewan S, Sangraula H, Kumar VL. Anti-diarrhoeal activity of the latex of *Calotropis procera*. *J Ethnopharmacol* 2001;76:115-8.
- [5] Kumar VL, Shivkar YM. In vivo and in vitro effect of latex of *Calotropis procera* on gastrointestinal smooth muscles. *J Ethnopharmacol* 2004;93:377-9.
- [6] Yeang HY, Arif SA, Yusof F, Sunderasan E. Allergenic proteins of natural rubber latex. *Methods* 2002;27:32-45.
- [7] Azarkan M, Amrani A, Nijs M, Vandermeers A, Zerhouni S, Smolders N, et al. Carica papaya latex is a rich source of a class II chitinase. *Phytochemistry* 1997;46:1319-25.
- [8] Nallamsetty S, Kundu S, Jagannadham MV. Purification and biochemical characterization of a highly active cysteine protease ervatamin A from the latex of *Ervatamia coronaria*. *J Protein Chem* 2003;22:1-13.
- [9] Soares PM, Lima SR, Matos SG, Andrade MM, Patrocínio MC, de Freitas CD, et al. Antinociceptive activity of *Calotropis procera* latex in mice. *J Ethnopharmacol* 2005;99:125-9.
- [10] Freitas CD, Oliveira JS, Miranda MR, Macedo NM, Sales MP, Villas-Boas LA, et al. Enzymatic activities and protein profile of latex from *Calotropis procera*. *Plant Physiol Biochem* 2007;45:781-9.
- [11] Ramos MV, Bandeira Gde P, de Freitas CD, Nogueira NA, Alencar NM, de Sousa PA, et al. Latex constituents from *Calotropis procera* (R. Br.) display toxicity upon egg hatching and larvae of *Aedes aegypti* (Linn.). *Mem Inst Oswaldo Cruz* 2006;101:503-10.
- [12] Sangraula H DS, Kumar VL. Evaluation of anti-inflammatory activity of latex of *Calotropis procera* in different models of inflammation. *Inflammopharmacology* 2001;9:257-64.

- 1 [13] Arya S, Kumar VL. Antiinflammatory efficacy of extracts of latex of *Calotropis*
2 *procera* against different mediators of inflammation. *Mediators Inflamm*
3 2005;2005:228-32.
- 4 [14] Roy S, Sehgal R, Padhy BM, Kumar VL. Antioxidant and protective effect of latex of
5 *Calotropis procera* against alloxan-induced diabetes in rats. *J Ethnopharmacol*
6 2005;102:470-3.
- 7 [15] Shivkar YM, Kumar VL. Histamine mediates the pro-inflammatory effect of latex of
8 *Calotropis procera* in rats. *Mediators Inflamm* 2003;12:299-302.
- 9 [16] Choedon T, Mathan G, Arya S, Kumar VL, Kumar V. Anticancer and cytotoxic
10 properties of the latex of *Calotropis procera* in a transgenic mouse model of
11 hepatocellular carcinoma. *World J Gastroenterol* 2006;12:2517-22.
- 12 [17] Grout D, Curtis R, Hassall C, Jones T. Cardiac glycosides of *Calotropis procera*.
13 *Tetrahedron* 1962;26:1281-5.
- 14 [18] Seiber J, Nelson C, Lee S. Cardenolides in the latex and leaves of seven *Asclepias*
15 species and *Calotropis procera*. *Phytochemistry* 1982;21:2343-8.
- 16 [19] Saber A, Hifney, Maharan G, Rizkallah M. Sterols and pentacyclic triterpenes of
17 *Calotropis procera*. *Bulletin of the Faculty of Pharmacy, Cairo University* 1969;7:91-
18 104.
- 19 [20] Saxena V, Saxena Y. Isolation and study of triterpenoids from *Calotropis procera*.
20 *Journal of Research in Indian Medicine, Yoga and Homeopathy* 1979;14:152-4.
- 21 [21] Tiwari K, Masood M, Rathore S, Minocha P. Study of anthocyanins from the flowers
22 of some medicinal plants. *Vijnana Parishad Anusandhan Patrika* 1978;21:177-8.
- 23 [22] Carruthers I, Griffiths D, Home V, Williams L. Hydrocarbons from *Calotropis procera*
24 in northern Australia. *Biomass* 1984;4:275-82.
- 25 [23] Malik N, Chughtai M. Antimicrobial activity of *Calotropis procera*. A preliminary
26 study. *Pakistan Journal of Science* 1979;31:127-9.
- 27 [24] Nandal S, Bhatti D. Preliminary screening of some weeds and shrubs for their
28 nematocidal activity against *Meloidogyne javanica*. *Indian Journal of Nematology*
29 1983;13:123-7.
- 30 [25] Masood A, Haq S, Anjum S, Saxena S. Further studies on the effect of some plant
31 extracts on the mortality of *Meloidogyne incognita*. *Journal of the Scientific Research*
32 *on Plants and Medicine* 1980;1:18-22.
- 33 [26] Girdhar G, Deval K, Mittal P, Vasudevan P. Mosquito control by *Calotropis* latex.
34 *Pesticides* 1984;18:82-7.
- 35 [27] Prakash A, Gupta R, Mathur R. Effect of oral administration of forty two indigenous
36 plants extracts on early and late pregnancy in albino rats. *Probe* 1978;27:315-23.
- 37 [28] Dhar M, Dhar M, Dhawan B, Mehrotra M, Roy C. Screening of Indian plants for
38 biological activity : Part I. *Indian Journal of Experimental Biology* 1968;6:231-47.
- 39 [29] Ayoub S, Kingston D. Screening of plants used in Sudan folk medicine for anticancer
40 activity. *Fitoterapia* 1981;52:281-4.
- 41 [30] Fenado MR WS, Thabre MI, Karunayaka EH. *Journal of Ethnopharmacology* 1989;7.
- 42 [31] Asuzu IU OO. Anthelmintic activity of the ethanolic extract of *Piliostigma thonningii*
43 bark in *Ascaridia galli* infected chickens. *Fitoterapia* 1994;65:291-7.
- 44 [32] Mishra P PN, Guru PY, Katiyar JC, Tandon JS. Antimalarial activity of traditional
45 plants against erythrocytic stages of *P. berghei*. *International Journal of*
46 *Pharmacognosy* 1991;29:19-23.
- 47 [33] Mascolo N, Sharma R, Jain SC, Capasso F. Ethnopharmacology of *Calotropis procera*
48 flowers. *J Ethnopharmacol* 1988;22:211-21.
- 49
50
51
52
53
54
55
56
57
58
59
60
61
62
63
64
65

- 1 [34] Ang HH, Chan KL, Mak JW. In vitro antimalarial activity of quassinoids from
2 Eurycoma longifolia against Malaysian chloroquine-resistant Plasmodium falciparum
3 isolates. *Planta Med* 1995;61:177-8.
- 4 [35] Iqbal Z, Lateef M, Jabbar A, Muhammad G, Khan MN. Anthelmintic activity of
5 *Calotropis procera* (Ait.) Ait. F. flowers in sheep. *J Ethnopharmacol* 2005;102:256-61.
- 6 [36] Moursy LE. Insecticidal activity of *Calotropis procera* extracts of the flesh fly,
7 *Sarcophaga haemorrhoidalis* fallen. *J Egypt Soc Parasitol* 1997;27:505-14.
- 8 [37] Ansari SH, Ali M. Norditerpenic ester and pentacyclic triterpenoids from root bark of
9 *Calotropis procera* (Ait) R. Br. *Pharmazie* 2001;56:175-7.
- 10 [38] Gallegos Olea RS, Oliveira AV, Silveira LM, Silveira ER. Organic carbonate from
11 *Calotropis procera* leaves. *Fitoterapia* 2002;73:263-5.
- 12 [39] Brady C. Fruit ripening. *Annual Review of Plant Physiology* 1985;38:155-78.
- 13 [40] Kembhavi AA, Buttle DJ, Knight CG, Barrett AJ. The two cysteine endopeptidases of
14 legume seeds: purification and characterization by use of specific fluorometric assays.
15 *Arch Biochem Biophys* 1993;303:208-13.
- 16 [41] Rudenskaya GN, Bogacheva AM, Preusser A, Kuznetsova AV, Dunaevsky Ya E,
17 Golovkin BN, et al. Taraxalisin -- a serine proteinase from dandelion *Taraxacum*
18 *officinale* Webb s.l. *FEBS Lett* 1998;437:237-40.
- 19 [42] Dubey VK, Jagannadham MV. Procerain, a stable cysteine protease from the latex of
20 *Calotropis procera*. *Phytochemistry* 2003;62:1057-71.
- 21 [43] Boller T. Roles of proteolytic enzymes in interaction of plant and other organisms,
22 1986.
- 23 [44] Abraham KI, Joshi PN. Studies on proteinases from *Calotropis gigantea* latex. I.
24 Purification and some properties of two proteinases containing carbohydrate. *Biochim*
25 *Biophys Acta* 1979;568:111-9.
- 26 [45] Hounsell E, Davies M, Smith K. Chemical methods of analysis of glycoproteins,
27 1997.
- 28 [46] Ellman L. Tissue sulfhydryl groups. *Archives of Biochemistry and Biophysics*
29 1959;82:70-7.
- 30 [47] Watt J, Breyer-Brandwijk N. *Medicinal and Poisonous Plants of Southern and Eastern*
31 *Africa*, 1962.
- 32 [48] Erdman MD. Nutrient and cardenolide composition of unextracted and solvent-
33 extracted *Calotropis procera*. *J Agric Food Chem* 1983;31:509-13.
- 34 [49] Van Quaquebeke E, Simon G, Andre A, Dewelle J, El Yazidi M, Bruyneel F, et al.
35 Identification of a novel cardenolide (2''-oxovoruscharin) from *Calotropis procera* and
36 the hemisynthesis of novel derivatives displaying potent in vitro antitumor activities
37 and high in vivo tolerance: structure-activity relationship analyses. *J Med Chem*
38 2005;48:849-56.
- 39 [50] Mijatovic T, Lefranc F, Van Quaquebeke E, Van Vynckt F, Darro F, Kiss R.
40 UNBS1450 : A New Hemi-Synthetic Cardenolide With Promising Anti-Cancer
41 Activity. *Drug Development Research* 2007;68:164-73.
- 42 [51] Horisberger JD. Recent insights into the structure and mechanism of the sodium
43 pump. *Physiology (Bethesda)* 2004;19:377-87.
- 44 [52] Fallor LD. Mechanistic studies of sodium pump. *Arch Biochem Biophys* 2008;476:12-
45 21.
- 46 [53] Erdmann E, Schoner W. Ouabain-receptor interactions in (Na + +K +)-ATPase
47 preparations from different tissues and species. Determination of kinetic constants and
48 dissociation constants. *Biochim Biophys Acta* 1973;307:386-98.
- 49 [54] Keller M, Pignier C, Egger M, Niggli E. F90927: a new member in the class of
50 cardioactive steroids. *Cardiovasc Drug Rev* 2007;25:210-20.
- 51
52
53
54
55
56
57
58
59
60
61
62
63
64
65

- 1 [55] Xie Z, Cai T. Na⁺-K⁺--ATPase-mediated signal transduction: from protein interaction
2 to cellular function. *Mol Interv* 2003;3:157-68.
- 3 [56] Jiang MM, Dai Y, Gao H, Zhang X, Wang GH, He JY, et al. Cardenolides from
4 *Antiaris toxicaria* as potent selective Nur77 modulators. *Chem Pharm Bull (Tokyo)*
5 2008;56:1005-8.
- 6 [57] Ueda JY, Tezuka Y, Banskota AH, Tran QL, Tran QK, Saiki I, et al. Antiproliferative
7 activity of cardenolides isolated from *Streptocaulon juvenas*. *Biol Pharm Bull*
8 2003;26:1431-5.
- 9 [58] Zhao M, Bai L, Wang L, Toki A, Hasegawa T, Kikuchi M, et al. Bioactive
10 cardenolides from the stems and twigs of *Nerium oleander*. *J Nat Prod* 2007;70:1098-
11 103.
- 12 [59] Zhou M, O'Doherty G. The de novo synthesis of oligosaccharides: application to the
13 medicinal chemistry SAR-study of digitoxin. *Curr Top Med Chem* 2008;8:114-25.
- 14 [60] Lopez-Lazaro M, Pastor N, Azrak SS, Ayuso MJ, Austin CA, Cortes F. Digitoxin
15 inhibits the growth of cancer cell lines at concentrations commonly found in cardiac
16 patients. *J Nat Prod* 2005;68:1642-5.
- 17 [61] Langenhan JM, Peters NR, Guzei IA, Hoffmann FM, Thorson JS. Enhancing the
18 anticancer properties of cardiac glycosides by neoglycorandomization. *Proc Natl Acad*
19 *Sci U S A* 2005;102:12305-10.
- 20 [62] Neumann W. Über Glykoside des Oleanders. *Berichte der deutschen chemischen*
21 *Gesellschaft* 1937;70:1547-54.
- 22 [63] St Janiak P, Weiss E, Reichstein T. ["Alpha"-, "beta"- and "delta"-
23 anhydrodigitoxigenin]. *Helv Chim Acta* 1967;50:1249-66.
- 24 [64] Abe F, Yamauchi T, Shibuya H, Kitagawa I. Triterpenoid glycosides from bark of
25 *Meliosma lanceolata*. *Phytochemistry* 1996;42:809-14.
- 26 [65] Schoner W, Scheiner-Bobis G. Endogenous and exogenous cardiac glycosides: their
27 roles in hypertension, salt metabolism, and cell growth. *Am J Physiol Cell Physiol*
28 2007;293:C509-36.
- 29 [66] Xie Z, Askari A. Na⁽⁺⁾/K⁽⁺⁾-ATPase as a signal transducer. *Eur J Biochem*
30 2002;269:2434-9.
- 31 [67] Stenkvist B. Cardenolides and cancer. *Anticancer Drugs* 2001;12:635-8.
- 32 [68] McConkey DJ, Lin Y, Nutt LK, Ozel HZ, Newman RA. Cardiac glycosides stimulate
33 Ca²⁺ increases and apoptosis in androgen-independent, metastatic human prostate
34 adenocarcinoma cells. *Cancer Res* 2000;60:3807-12.
- 35 [69] Haux J, Solheim O, Isaksen T, Angelsen A. Digitoxin, in non-toxic concentrations,
36 inhibits proliferation and induces cell death in prostate cancer cell lines.
37 *Zeitgenössische Onkologie* 2000;32:11-6.
- 38 [70] Mijatovic T, Roland I, Van Quaquebeke E, Nilsson B, Mathieu A, Van Vynckt F, et
39 al. The alpha1 subunit of the sodium pump could represent a novel target to combat
40 non-small cell lung cancers. *J Pathol* 2007;212:170-9.
- 41 [71] Lefranc F, Mijatovic T, Kondo Y, Sauvage S, Roland I, Debeir O, et al. Targeting the
42 alpha 1 subunit of the sodium pump to combat glioblastoma cells. *Neurosurgery*
43 2008;62:211-21; discussion 21-2.
- 44 [72] Okada H, Mak TW. Pathways of apoptotic and non-apoptotic death in tumour cells.
45 *Nat Rev Cancer* 2004;4:592-603.
- 46 [73] Mijatovic T, Op De Beeck A, Van Quaquebeke E, Dewelle J, Darro F, de Launoit Y,
47 et al. The cardenolide UNBS1450 is able to deactivate nuclear factor kappaB-
48 mediated cytoprotective effects in human non-small cell lung cancer cells. *Mol Cancer*
49 *Ther* 2006;5:391-9.
- 50
51
52
53
54
55
56
57
58
59
60
61
62
63
64
65

- 1 [74] Sontheimer H. Malignant gliomas: perverting glutamate and ion homeostasis for
2 selective advantage. *Trends Neurosci* 2003;26:543-9.
- 3 [75] Ransom CB, O'Neal JT, Sontheimer H. Volume-activated chloride currents contribute
4 to the resting conductance and invasive migration of human glioma cells. *J Neurosci*
5 2001;21:7674-83.
- 6 [76] Kurosawa M, Tani Y, Nishimura S, Numazawa S, Yoshida T. Distinct PKC isozymes
7 regulate bufalin-induced differentiation and apoptosis in human monocytic cells. *Am J*
8 *Physiol Cell Physiol* 2001;280:C459-64.
- 9 [77] Numazawa S, Honma Y, Yamamoto T, Yoshida T, Kuroiwa Y. A cardiotoxic steroid
10 bufalin-like factor in human plasma induces leukemia cell differentiation. *Leuk Res*
11 1995;19:945-53.
- 12 [78] Zhang S, Malmersjo S, Li J, Ando H, Aizman O, Uhlen P, et al. Distinct role of the N-
13 terminal tail of the Na,K-ATPase catalytic subunit as a signal transducer. *J Biol Chem*
14 2006;281:21954-62.
- 15 [79] Aizman O, Uhlen P, Lal M, Brismar H, Aperia A. Ouabain, a steroid hormone that
16 signals with slow calcium oscillations. *Proc Natl Acad Sci U S A* 2001;98:13420-4.
- 17 [80] Mijatovic T, Mathieu V, Gaussin JF, De Neve N, Ribaucour F, Van Quaquebeke E, et
18 al. Cardenolide-induced lysosomal membrane permeabilization demonstrates
19 therapeutic benefits in experimental human non-small cell lung cancers. *Neoplasia*
20 2006;8:402-12.
- 21 [81] Maiuri MC, Zalckvar E, Kimchi A, Kroemer G. Self-eating and self-killing: crosstalk
22 between autophagy and apoptosis. *Nat Rev Mol Cell Biol* 2007;8:741-52.
- 23 [82] Mijatovic T, De Neve N, Gailly P, Mathieu V, Haibe-Kains B, Bontempi G, et al.
24 Nucleolus and c-Myc: potential targets of cardenolide-mediated antitumor activity.
25 *Mol Cancer Ther* 2008;7:1285-96.
- 26
27
28
29
30
31
32
33
34
35
36
37
38
39
40
41
42
43
44
45
46
47
48
49
50
51
52
53
54
55
56
57
58
59
60
61
62
63
64
65

Legends to figures

Figure 1

Illustrative representation of the different pharmacologically important potentials of *Calotropis procera* extracts.

Figure 2

Calotropis procera cartoon showing the three main approaches for using the plant's intrinsic pharmaceutical potential.

Figure 3

Schematic representation of Na⁺/K⁺ ATPase inhibition by cardiotonic steroids.

Two conformationally different stades are known for the Na⁺/K⁺ ATPase : in E1, enzyme phosphorylation on the phosphorylation domain P enables intracellular binding of 3 Na⁺ in exchange to 2 K⁺, thus leading to stade E2. The 3 Na⁺ are released in the extracellular fluid whereas 2 new K⁺ are imported. Through hydrolysis, the enzymatic complex returns to stade E1 with P_i release. Cardiotonic steroids (CS) like cardenolides become tightly bound to the different extracellular loops (H₁-H₂, H₃-H₄, H₅-H₆) of the enzymatic α subunit. The holoenzyme is blocked in stade E2, no further ion exchange is possible.

Figure 4

Chemical structure of a small selection of natural sodium pump inhibitors and its analogues.

Figure 5

SAR studies on analogues of natural sodium pump inhibitors.

Summary of structure-activity relationship (SAR) results of natural sodium pump inhibitors and derivatives concerning the observed anti-cancer cytotoxicity and anti-oxidant properties. The pharmacophores identified during the studies are highlighted in colour.[49, 56-64]

Table 1

Main endogenous and exogenous cardenolides and their pharmaceutical activity.

Figure 6

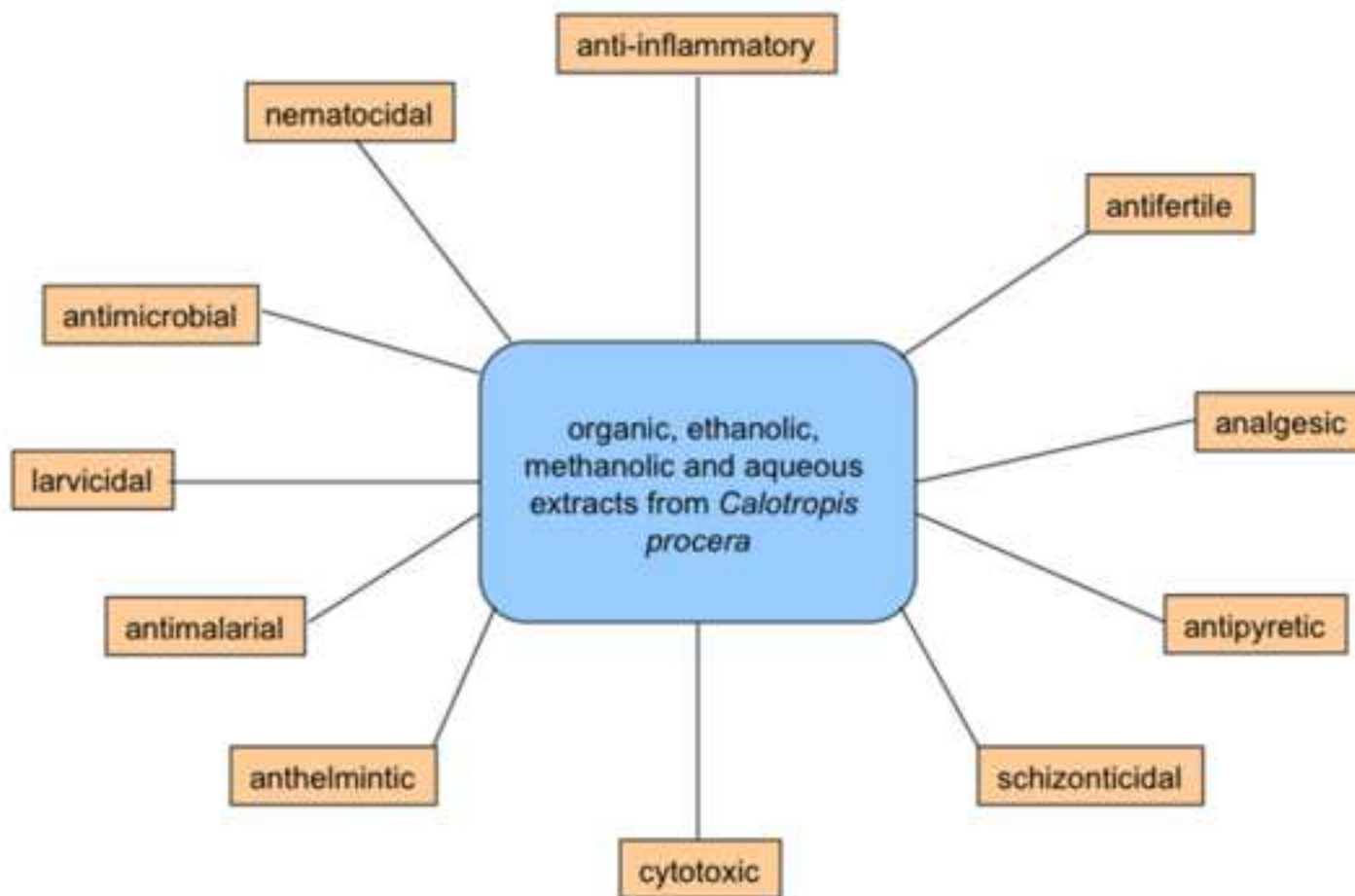
In vitro and *in vivo* effects of UNBS1450.

Figure 7

Apoptosis and autophagy related cell death induced by UNBS1450.

Accepted Manuscript

1
2
3
4
5
6
7
8
9
10
11
12
13
14
15
16
17
18
19
20
21
22
23
24
25
26
27
28
29
30
31
32
33
34
35
36
37
38
39
40
41
42
43
44
45
46
47
48
49
50
51
52
53
54
55
56
57
58
59
60
61
62
63
64
65



Calotropis procera

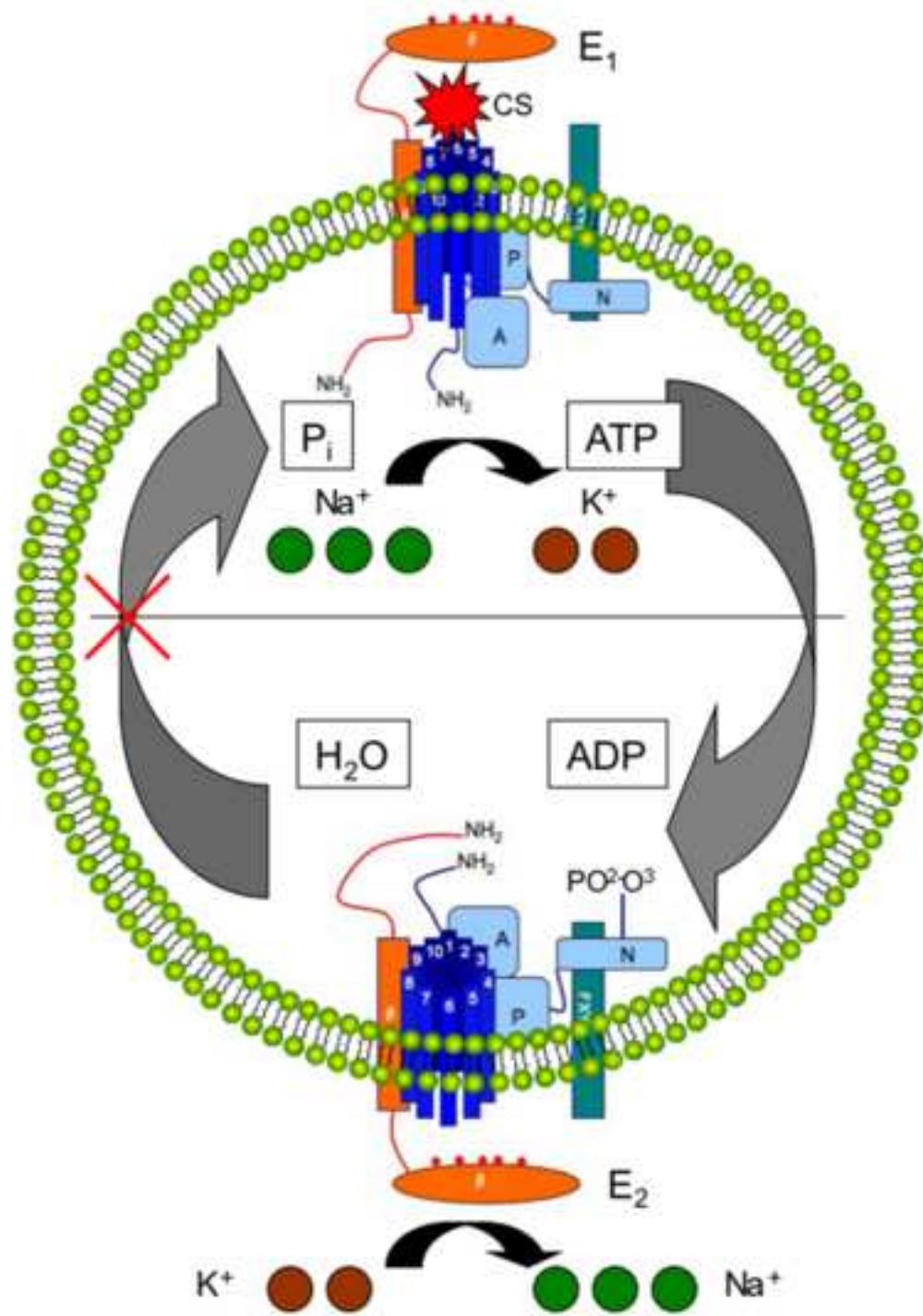


organic extracts
norditerpenic esters
organic carbonates

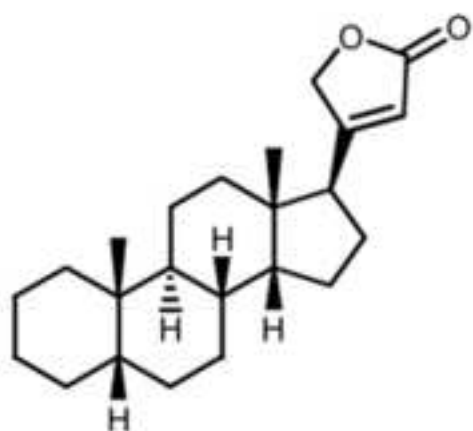
isolated compounds
procerain
cardenolides

Latex
• dried
• dialysed

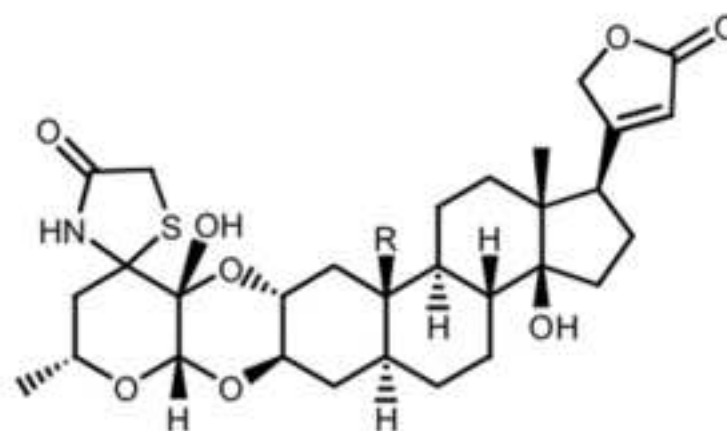
Juncker *et al.*, 2008



Juncker *et al.*, 2008

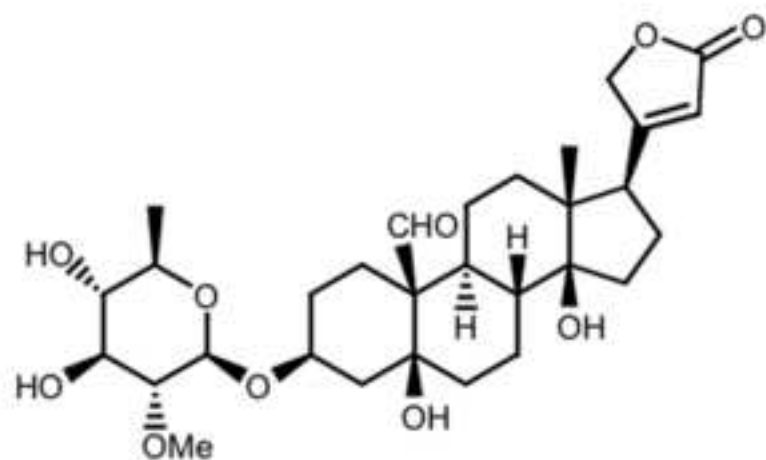


Cardenolide structure

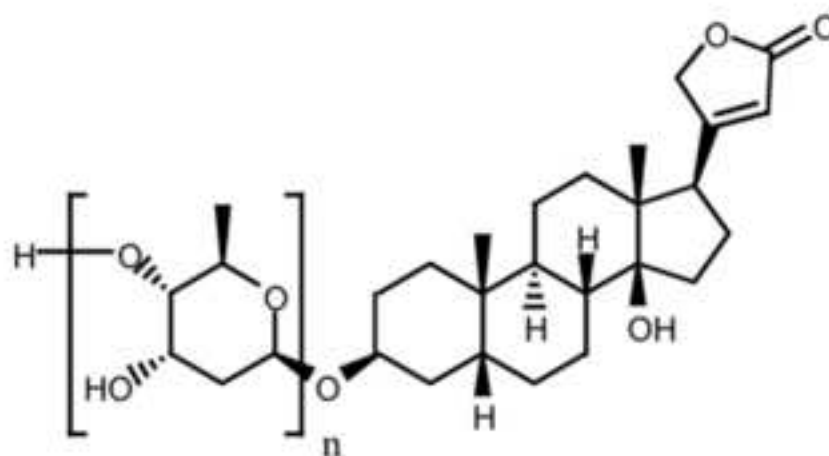


R=CH₂OH UNBS1450 01

R=CHO 2''-oxovoruscharin 02



Toxicaroside D, *Antiaris toxicaria* 03

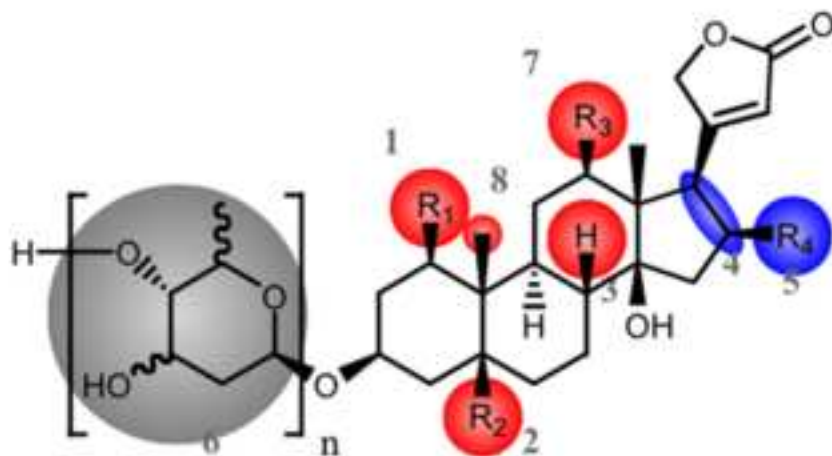


n=0 digitoxigenin 04

n=1 monosaccharide-digitoxigenin 05

n=2 disaccharide-digitoxigenin 06

n=3 trisaccharide-digitoxigenin (digitoxin) 07

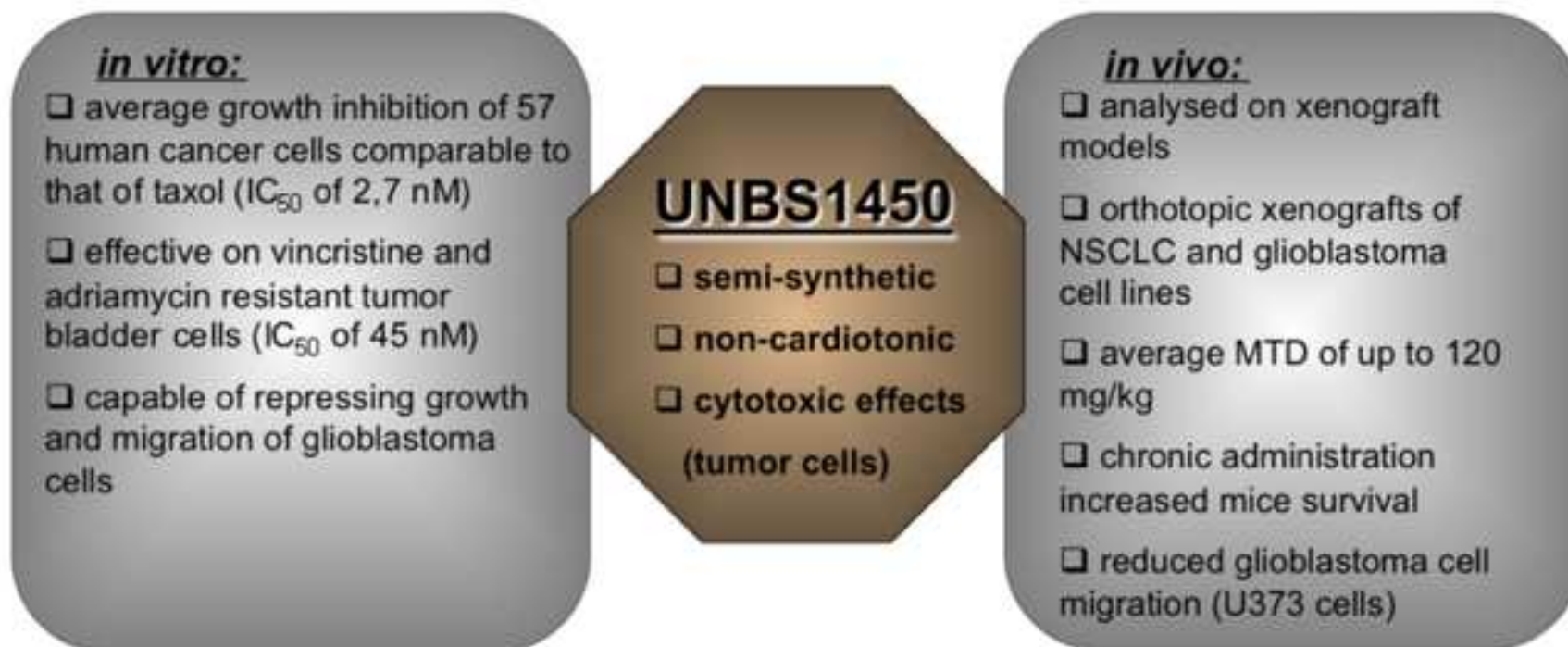


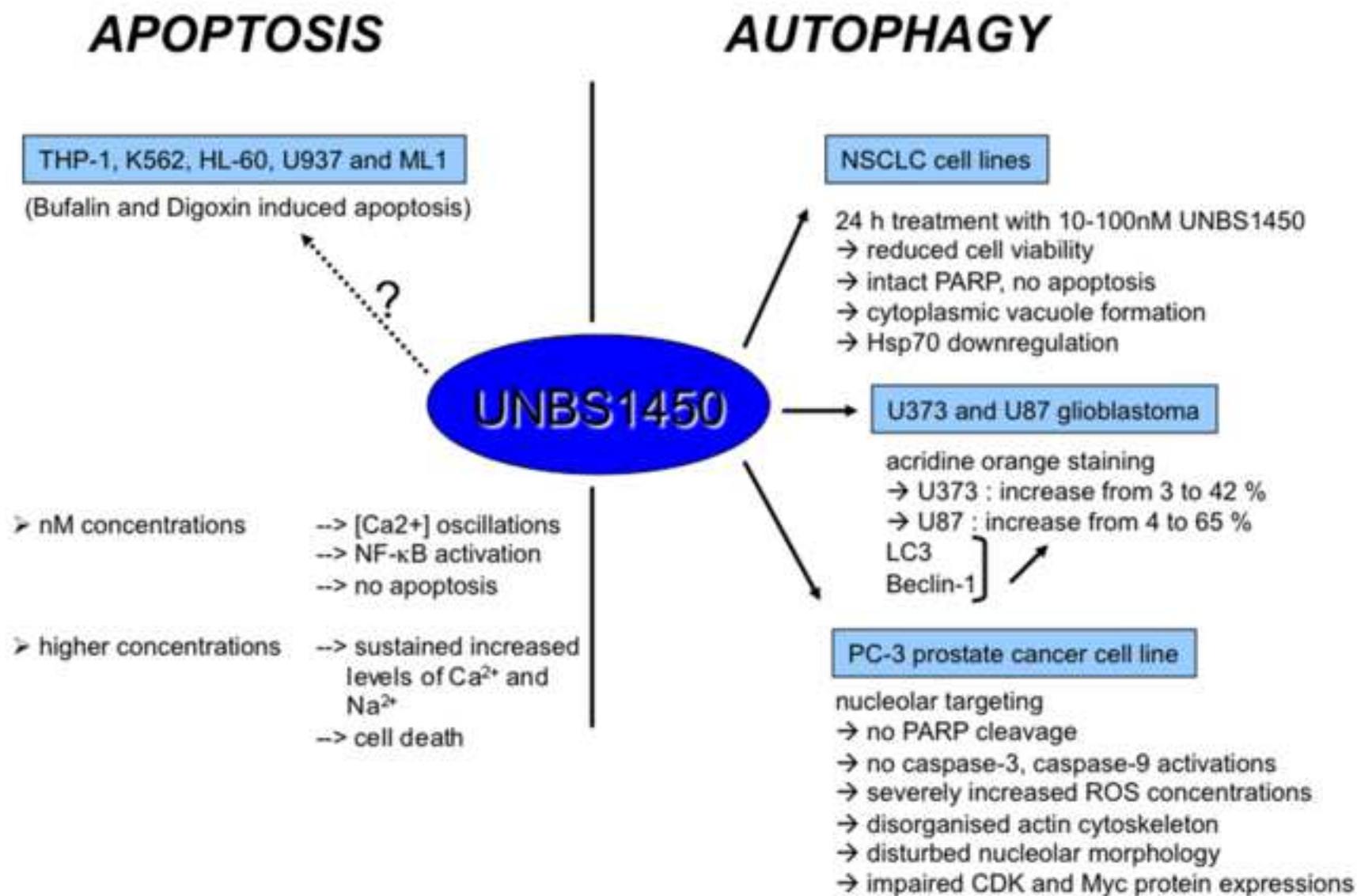
↑, ↓: increase or decrease of cytotoxicity

≈: cytotoxicity not altered

↓ : down-regulation of antioxidant potential

- 1 - 1-OH analogue ↑
- 2 - 5-OH derivative ↑
- 3 - additional 14-hydroxy group ↓
- 4 - C16-C17 ene analogue ↓
- 5 - C16 acetoxy derivative =
- 6 - mono-, di-, tri-glycosidation
- of aglycone ↑
- 7 - 12β-hydroxylation ↓
- 8 - reduction of 19-CHO ↑





Juncker *et al.*, 2008