



HAL
open science

Thorough analysis of silicon substitution in biphasic calcium phosphate bioceramics: A multi-technique study

S. Gomes, G. Renaudin, Adel Mesbah, Edouard Jallot, Christian Bonhomme,
F. Babonneau, Jean-Marie Nedelec

► To cite this version:

S. Gomes, G. Renaudin, Adel Mesbah, Edouard Jallot, Christian Bonhomme, et al.. Thorough analysis of silicon substitution in biphasic calcium phosphate bioceramics: A multi-technique study. *Acta Biomaterialia*, 2010, 6 (8), pp.3264-3274. 10.1016/j.actbio.2010.02.034 . hal-00492332

HAL Id: hal-00492332

<https://hal.science/hal-00492332v1>

Submitted on 2 Jul 2021

HAL is a multi-disciplinary open access archive for the deposit and dissemination of scientific research documents, whether they are published or not. The documents may come from teaching and research institutions in France or abroad, or from public or private research centers.

L'archive ouverte pluridisciplinaire **HAL**, est destinée au dépôt et à la diffusion de documents scientifiques de niveau recherche, publiés ou non, émanant des établissements d'enseignement et de recherche français ou étrangers, des laboratoires publics ou privés.



Distributed under a Creative Commons Attribution 4.0 International License

Thorough analysis of silicon substitution in biphasic calcium phosphate bioceramics: A multi-technique study

S. Gomes^{a,b}, G. Renaudin^{a,b}, A. Mesbah^{a,b}, E. Jallot^{c,d}, C. Bonhomme^e, F. Babonneau^e, J.-M. Nedelec^{a,b,*}

^a Clermont Université, ENSCCF, Laboratoire des Matériaux Inorganiques, BP 10448, F-63000, Clermont-Ferrand, France

^b CNRS, UMR 6002, F-63177 Aubière, France

^c Clermont Université, UBP, LPC, F-63177 Aubière, France

^d CNRS, UMR 6533, F-63177 Aubière, France

^e Université Pierre et Marie Curie - Paris 6 and CNRS, Collège de France, Laboratoire de Chimie de la Matière Condensée, 11 place Marcelin Berthelot 75005 Paris France

Four samples of composition $\text{Ca}_{10}(\text{PO}_4)_{6-x}(\text{SiO}_4)_x(\text{OH})_{2-x}$, with $x = 0.0, 0.1, 0.2$ and 0.5 , were prepared and characterized using powder X-ray and neutron powder diffraction, and ^1H , ^{31}P and ^{29}Si nuclear magnetic resonance (NMR) spectroscopy. The composition of the Si-substituted HAp phases was determined by joint Rietveld refinements from powder X-ray and powder neutron diffraction data. Taking into account electroneutrality, a chemical formula for the Si-substituted HAp phases with indication of the incorporated silicate amount is proposed. Solid-state ^{29}Si NMR confirms the presence of only Q_0 species, in good agreement with the presence of substituted HAp and β -TCP phases only. Thanks to NMR spectroscopy, two types of protons in the Si-substituted HAp phase were identified, the new site corresponding to species engaged in hydrogen bonding with silicate anions. This allowed further refinement of the formulae for these phases with very good quantitative agreement for populations derived from the refinement and integration of NMR data.

1. Introduction

Biphasic calcium phosphate (BCP) ceramics, composed of a mixture of hydroxyapatite (HAp, $\text{Ca}_{10}(\text{PO}_4)_6(\text{OH})_2$) and β -tricalcium phosphate (β -TCP, $\beta\text{-Ca}_3(\text{PO}_4)_2$), are interesting candidates in reconstructive surgery. Bone mineral mass is dominated by nanocrystalline multisubstituted calcium phosphate apatite [1–3]. The type and amount of ionic substitutions in the apatite phase of bone vary from the weight per cent (wt.%) level (for carbonate substitution [4]) to the parts per million (ppm) level (for strontium or barium substitutions, for example [5]). The role of many of these ionic species in hard tissues is not fully understood owing to the difficulties encountered in monitoring and quantifying their amounts, which vary according to dietary alteration, and to physiological and pathological causes [6]. However, it is accepted that these different ions play a major role in the biochemistry of bones, enamel and dentin [7]. HAp is widely used as a biomaterial in clinical applications (bioactive HAp coatings on metallic implants [8,9], porous HAp ceramic implants to facilitate bone ingrowth [10], or inorganic filler in a ceramic-polymer composite biomate-

rial [11]) owing to its high biocompatibility and osteoconductivity. It is therefore essential to improve HAp *in vivo* bioactivity by increasing its solubility in order to accelerate the subsequent crystallization of apatite crystals, cell adhesion and collagen formation. When bioactive glasses are used, these reactions are very rapid and have been reported to occur within minutes of implantation or contact with physiological solutions [12], but the great advantage of HAp materials is their chemical similarity to the bone inorganic component. The most common example of this approach is the preparation of carbonated-substituted HAp [13,14]. Several studies have demonstrated the beneficial effect of the incorporation of silicon in HAp (*in vitro* enhancement and stimulation of the osteoblast-like cell activity, and *in vivo* increase in the dissolution rate) [15–19]; [20 for a review]. Silicon is involved in the early stage of bone calcification, and the presence of silicon favours bone formation and calcification [18,21–23]. Interestingly, these effects have been critically discussed very recently by Bohner [24], putting forward the lack of deep understanding of the effect of Si doping on the materials themselves and thus questioning the origin of the claimed effect in biological conditions. Another crucial point raised in the paper is the need for accurate local information about substituting ions and their fate upon interactions in biological conditions. In particular, two very distinct situations discussed in Ref. [24] can be considered, depending on the real incorporation of silicon in the structure of

* Corresponding author. Address: Clermont Université, ENSCCF, Laboratoire des Matériaux Inorganiques, BP 10448, F-63000, Clermont-Ferrand, France Tel.: +33 4 73 40 71 95; fax: +33 4 73 40 53 28.

E-mail address: j-marie.nedelec@univ-bpclermont.fr (J.-M. Nedelec).

the apatite or failure to incorporate. If the silicon is weakly bonded to the ceramic, some silicon can be released in the biological fluids and then have an effect on cellular behaviour as documented in the literature; in that case, the material acts mainly as a silicon-delivery system. If the silicon is structurally incorporated in the crystalline phases, this claim is hard to follow, because the Si-HAp is believed to be very stable. In this case, only modifications of the HAp properties (crystallite size, crystallinity, surface roughness, surface charges) could explain different behaviour in solution. In this case, this is an indirect effect of silicon doping affecting the crystalline structure of the material. Another possibility for increasing calcium phosphate solubility is to mix the HAp phase with appreciable levels of a more resorbable calcium phosphate phase, such as β -TCP, to form so-called BCP ceramics [25–29]. In this case, if the silicon is substituted in both phases, the two previously mentioned effects could combine owing to the high solubility of TCP phase. It is thus of major importance to follow carefully the fate of silicon substitution in these types of ceramics.

In the present work, a series of silicon-substituted BCP ceramics, with increasing weight content of silicon (0.0–1.4 wt.% Si), was synthesized following the aqueous precipitation method largely used in the literature and described by Gibson et al. [15]. A fine structural description of the silicon-substituted BCP samples is needed to understand and improve the material performance. Such a structural description is important for the HAp phase, whose structure can present several non-stoichiometries due to calcium deficiency, presence of HPO_4^{2-} anion, replacement of hydroxyl by oxygen or vacancy [30]. The originality of this work is to propose a combined approach using both diffraction techniques (X-rays and neutrons) and local and selective technique, namely solid-state NMR spectroscopy. The later is particularly powerful for localizing the silicate ions inside the phosphocalcic phases and probing their spatial proximity with other nuclei.

2. Materials and methods

2.1. Si_x -BCP syntheses ($x = 0.0, 0.1, 0.2$ and 0.5)

Four samples of composition $\text{Ca}_{10}(\text{PO}_4)_{6-x}(\text{SiO}_4)_x(\text{OH})_{2-x}$, with $x = 0.0, 0.1, 0.2$ and 0.5 , were synthesized using the aqueous precipitation method [15] which led, according to the literature, either to single Si-doped HAp phase or to BCP (Si-doped mixture of HAp and β -TCP phases) [20,31,32]. The syntheses were repeated several times and are reproducible from XRD data. This acid–base neutralization reaction is by far the most often encountered one in the literature. The starting materials used were calcium hydroxide ($\text{Ca}(\text{OH})_2$, Riedel-de Haën), orthophosphoric acid (H_3PO_4 , Sigma-Aldrich) and silicon acetate ($\text{Si}(\text{CH}_3\text{COO})_4$, Aldrich). The synthesized samples are named Si_x -BCP, with x the value of the nominal silicate substitution ($x = 0.0, 0.1, 0.2$ and 0.5). The appropriate quantities of reactants to prepare Si_x -BCP were calculated assuming that silicate would substitute for phosphate according to the mechanism $[\text{PO}_4]^{3-} + \text{OH}^- \leftrightarrow [\text{SiO}_4]^{4-}$, to ensure charge imbalance. The targeted nominal composition is thus $\text{Ca}_{10}(\text{PO}_4)_{6-x}(\text{SiO}_4)_x(\text{OH})_{2-x}$. The precipitation reaction was carried out at room temperature under stirring, and the pH was maintained at 10.5–11.0 by the addition of ammonium hydroxide solution. After the reactants were mixed, the suspension was aged overnight. The resulting precipitate was filtered and dried overnight at 80 °C. The four as-prepared powders were heated at 1100 °C for 15 h (with a heating rate of 4 °C min^{-1}).

The chemical compositions of all the samples were determined by inductively coupled plasma atomic emission spectroscopy (ICP-AES).

2.2. Analytical techniques

2.2.1. X-ray diffraction and neutron powder diffraction

Powder X-ray diffraction (PXRD) patterns were recorded on an X'Pert Pro Philips diffractometer, with θ – θ geometry, equipped with a solid detector X-Celerator, a graphite back-end monochromator, and using Cu $K\alpha$ radiation ($\lambda = 1.54184 \text{ \AA}$). PXRD patterns were recorded at room temperature in the interval $3^\circ < 2\theta < 120^\circ$, with step size $\Delta 2\theta = 0.0167^\circ$ and counting time 30 s per step. A PXRD pattern was collected from pure Si standard using the same experimental conditions in order to extract the instrumental resolution function to improve the peak profile fitting and to extract intrinsic microstructural parameters of both HAp and β -TCP phases.

Neutron powder diffraction (NPD) experiments were performed on D1B at ILL (Grenoble, France) at room temperature. The samples (~2 g mass) were enclosed in cylindrical vanadium containers with inner diameter 8 mm and measured at a wavelength of $\lambda = 2.52 \text{ \AA}$ using graphite monochromators, in the 2θ range 10 – 90° with step size $2\theta = 0.2^\circ$. The transmission factor was calculated ($\mu R = 0.15$) and the data corrected accordingly. The patterns showed the same phases as those observed by XRD. The low amount of hydrogen atoms in the samples allows NPD patterns with acceptable background to be recorded without preparing deuterated samples. The high neutron scattering contrast of hydrogen atoms, due to the negative neutron scattering length of -3.74 fm , allows refinement of their localization and site occupancies with good accuracy.

2.2.2. Joint Rietveld refinements

Joint Rietveld refinements based on the simultaneous use of X-ray and neutron data were performed for each sample with the FullProf.2k Multi-Pattern program [33]. This technique reaches good accuracy in the refinement of Ca, P, O and H sites (site positions and site occupancies). Nevertheless, the cationic distribution on the P sites (due to Si substitution) was not accessible here. The use of a high-resolution–high-intensity neutron diffractometer is needed to refine Si atoms in calcium phosphate phases (Si atom presents a weak neutron scattering contrast and no X-ray scattering contrast with P atom). The initial structural parameters of HAp, $\text{Ca}_{10}(\text{PO}_4)_6(\text{OH})_2$, were taken from Ref. [34]: space group $P6_3/m$, $Z = 2$, $a = 9.4218 \text{ \AA}$ and $c = 6.8813 \text{ \AA}$, seven independent atomic positions: two Ca positions in sites $4f$ ($z = 0.0007$) and $6h$ ($x = 0.2465$, $y = 0.9933$), one P position in site $6h$ ($x = 0.3968$, $y = 0.3693$), and four O positions in sites $6h$ ($x = 0.331$, $y = 0.480$ and $x = 0.579$, $y = 0.455$), $12i$ ($x = 0.3394$, $y = 0.2569$, $z = 0.0694$) and $4e$ ($z = 0.192$ with a half occupancy factor). The initial structural parameters of β -TCP, $\text{Ca}_3(\text{PO}_4)_2$, were taken from Ref. [35]: space group $R3c$, $Z = 21$, $a = 10.4352 \text{ \AA}$ and $c = 37.4029 \text{ \AA}$, 18 independent atomic positions: five Ca positions (three in site $18b$ and two in site $6a$, one with a partial occupancy factor), three P positions (two in site $18b$ and one in site $6a$), and 10 O positions (nine in site $18b$ and one in site $6a$). In the course of refinement, two hydrogen positions were introduced for the HAp phase: (1) a hydrogen atom from the hydroxyl group in the Wyckoff position $4e$ ($z = 0.073$ with a half occupancy factor) [36]; and (2) a hydrogen atom from the HPO_4^{2-} anion in the Wyckoff position $6h$ ($x = 0.4746$, $y = 0.1666$ with a very small occupancy factor of 0.05) [30]. The following parameters were first refined: scale factors, zero shift, line profile parameters, lattice parameters, preferential orientations and asymmetry parameters. In the second step, thermal displacement factors were refined (three thermal displacement values were considered: one for Ca, one for P and one for O) as well as atomic coordinates when allowed by a sufficient weight of the phase (HAp phase for the four samples, and β -TCP phase for $\text{Si}_{0.2}$ -BCP and $\text{Si}_{0.5}$ -BCP samples). Site occupancies of calcium sites, phosphate group, oxygen and hydrogen atoms of hydroxyl group and of

HPO₄²⁻ anion were systematically checked in the final runs. Ca1 site occupancy was found to deviate weakly from unity, unlike Ca2 site occupancy (which was fixed at unity). Occupancy of phosphate anion also deviated weakly from unity. Refinements of the oxygen and hydrogen sites occupancy from the hydroxyl group show the presence of both O²⁻ and OH⁻ anions, as well as small amounts of vacancies. Occupancy factors from the hydrogen atom from the HPO₄²⁻ anion were close to zero. Only one soft distance constraint was applied in the case of the Si_{0.5}-BCP sample for the position refinement of hydrogen atom from the hydroxyl group due to too short a distance of 0.6(1) Å obtained without constraint (the applied soft constraint was an interatomic distance $d_{O-H} = 0.85(5)$ Å, and the refined value was 0.79(6) Å). Microstructural parameters were also extracted from the Rietveld refinement procedure as described in previous work [29,36].

2.2.3. NMR spectroscopy

NMR spectra were recorded on an AVANCE 300 Bruker spectrometer (7.05 T) using cross-polarization magic angle spinning (CP-MAS) probeheads with 7 mm rotors spinning at 5 kHz (²⁹Si) or with 4 mm rotors spinning at 14 kHz (³¹P, ¹H). The ¹H spectra were recorded with a recycle delay of 5 s for a 90° excitation pulse (5 μs). The ³¹P spectra were recorded using 45° pulse excitation (1.9 μs) and a cross-polarization (CP) sequence with a square profile of the ³¹P RF pulse during spin-lock (RF field of 52 kHz), and ¹H decoupling during acquisition using SPINAL-64. The ¹H-³¹P heteronuclear correlation (HETCOR) experiments were recorded for a contact time of 900 μs (32 transients and 108t₁ values). For the ²⁹Si MAS-NMR spectra, 45° pulse excitation was used with a recycle delay of 60 s. Between 5000 and 6000 transients were accumulated. A ²⁹Si-{¹H} CP-MAS experiment was performed for one sample with a contact time of 5 ms.

NMR spectra were recorded for the undoped sample and for the two doped samples with the highest amount of silicon.

3. Results and discussion

3.1. Elementary and phase compositions

Chemical analyses (Table 1) of the silicon-substituted BCP samples deviate weakly from the expected nominal compositions. Experimental Ca/(P + Si) and x values are still above the expected values when silicon is added to the synthesis solutions. The experimental Ca/(P + Si) and x values indicate that the synthesized powder did not contain the whole quantities of silicon introduced during the synthesis. The higher silicon substitution level, the larger the gap between experimental and nominal composition: $x = 0.09$ instead 0.1 for Si_{0.1}-BCP, $x = 0.15$ instead 0.2 for Si_{0.2}-BCP, and $x = 0.39$ instead 0.5 for Si_{0.5}-BCP. Such a difference between nominal and experimental chemical compositions could be explained by the consequent washing process applied on the as-synthesized poorly crystallized powder.

Table 1
Nominal and experimental (determined by ICP-AES) compositions of elemental oxide CaO, P₂O₅ and SiO₂ in the synthesized samples.

Sample	Nominal composition					Experimental composition				
	CaO (wt.%)	P ₂ O ₅ (wt.%)	SiO ₂ (wt.%)	Ca/(P + Si)	x^a	CaO (wt.%)	P ₂ O ₅ (wt.%)	SiO ₂ (wt.%)	Ca/(P + Si)	x^b
Si _{0.0} -BCP	56.84	43.16	–	1.67	0.0	57.01	42.99	–	1.68	0.00
Si _{0.1} -BCP	56.90	42.49	0.61	1.67	0.1	56.80	42.65	0.55	1.66	0.09
Si _{0.2} -BCP	56.97	41.81	1.22	1.67	0.2	57.00	42.69	0.93	1.65	0.15
Si _{0.5} -BCP	57.16	39.78	3.06	1.67	0.5	57.83	39.86	2.35	1.63	0.39

^a x Value from the nominal used composition Ca₁₀(PO₄)_{6-x}(SiO₄)_x(OH)_{2-x}.

^b Experimental x value from the chemical analyses.

A representative plot of the Rietveld refinement of the as-prepared samples is shown in Fig. 1 for Si_{0.5}-BCP sample. PXRD analysis clearly show that the four as-prepared powders are single phase, composed of HAp with very small crystallite size (as evidenced by the extremely broad diffraction peaks in the powder patterns). Rietveld refinements indicate an average coherent domain size ~100 Å for the as-prepared samples with an elongated prismatic morphology (with a basal dimension ~70 Å and height ~140 Å along the hexagonal axis).

Fig. 2 shows details ($20^\circ < 2\theta < 60^\circ$) of the PXRD patterns recorded for the samples heat treated at 1100 °C. PXRD patterns indicate that the four samples are BCP, composed of different amounts of well-crystallized HAp and β-TCP phases. Fig. 3 shows an example illustrating joint Rietveld refinement performed for the Si_{0.5}-BCP sample on both X-ray and neutron diffraction patterns. Quantitative results from the Rietveld analyses are indicated in Table 2.

The amount of β-TCP is dependent on the silicon substitution level, as shown in Fig. 4. Unsubstituted powder from Si_{0.0}-BCP presents a small amount of β-TCP (9 wt.%), and this amount increases continuously with the amount of silicon to reach 40 wt.% in Si_{0.5}-BCP. When the x value is increased, a weak decrease in the crystallinity of the HAp phase (weak broadening of the HAp diffraction peaks) is observed.

3.2. Joint Rietveld refinement results

Rietveld refinement results indicate that silicon enters the HAp phase. Variations in lattice parameters a and c and in unit cell volume are dependent on the Si-substitution level. Table 2 and Fig. 5 show that the unit cell volume of HAp increases when silicon is added during the synthesis. In agreement with interatomic distances (d_{Si-O} of 1.66 Å in silicate anion is longer than d_{P-O} of ~1.57 Å in phosphate anion) the substitution of silicate for phosphate led to an increase in the unit cell volume, as mentioned in the literature [37–39]. Work by Gibson et al. [15] and Arcos et al. [30] show a quite invariant unit cell volume of HAp when substituted by silicon (see Fig. 5c). The variation in lattice parameter c shows a more homogeneous increase when silicon is introduced in the HAp phase (see Fig. 5b). Only data from Arcos et al. [30] disagree with this observation, but their silicon-substituted HAp sample was prepared by the ceramic method in contrast to all other studies based on silicon-substituted HAp phases synthesized via a precipitation in solution (either the aqueous method [15,37,39] and this work, or the sol-gel method [38]). Variation in the lattice parameter a from these different studies is highly heterogeneous (see Fig. 5a), increasing ([38] and this work), invariant [30,37,39] or decreasing [15] with the x nominal value. Such heterogeneous evolution of the basal hexagonal unit cell volume has a repercussion on the variation in the unit cell volume. This is true in the case of data from Gibson et al. [15], which present a decreasing unit cell volume in the Si-substituted HAp phase, in contrast to other data from samples prepared via a wet method. These observations illustrated in Fig. 5 clearly indicate (1) that the variation in the lattice

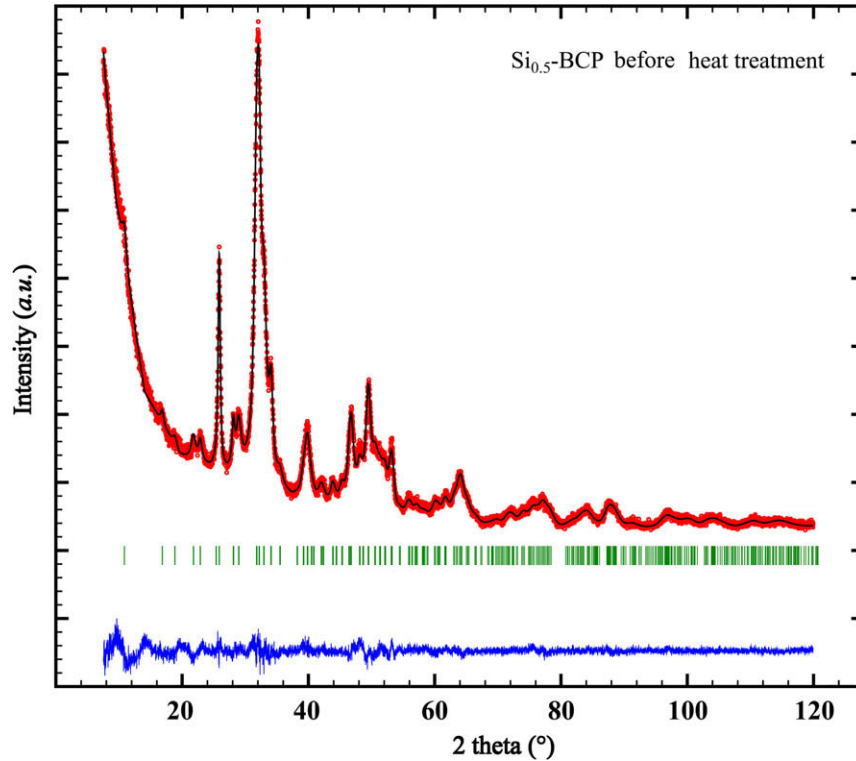


Fig. 1. Rietveld plot of the X-ray powder pattern of the as-prepared $\text{Si}_{0.5}$ -BCP sample (before heat treatment). Observed (red dots), refined (black lines) and difference curves (blue line) with the HAp Bragg peak positions (green ticks).

parameter c is a good indicator of the silicon substitution level (in contrast to the lattice parameter a , and a better indicator than the largely used unit cell volume), and (2) that wet (precipitation in solution) and dry (ceramic [30]) methods led to different materials. Insertion of silicon atoms into the HAp structure led to a decrease in the apparent coherent domain size (Table 2) as already observed in the case of strontium substitution in HAp [40]. The crystallinity of HAp samples is preserved, but the average crystallite size decreases from $>2200 \text{ \AA}$ in the silicon-free $\text{Si}_{0.0}$ -BCP sample to 1250 \AA in the $\text{Si}_{0.5}$ -BCP sample. The decrease in the HAp crystallite size is concomitant with the increasing amount of β -TCP phase. When introduced in the HAp structure, silicon destabilizes its crystallization in favour of crystallization of β -TCP. The lattice parameters of the hexagonal lattice of β -TCP (Table 2) increase when silicon is added. Fig. 6 reports the evolution of unit volume per Ca atom for both HAp (unit cell volume divided by 10) and β -TCP (unit cell volume divided by 63) phases. The gap in linearity encountered for the β -TCP phase must certainly be explained by its low amount by weight in the $\text{Si}_{0.0}$ -BCP and $\text{Si}_{0.1}$ -BCP samples (Table 2). Comparison of these unit volume variations for the two phases indicates that silicon atoms are also inserted in the β -TCP structure. Silicon substitution for phosphate seems to be on the same order of magnitude for both phases, and perhaps more significant for β -TCP (as the slope of the linear fitting for β -TCP is higher than that for HAp).

Attempts to locate Si atom in both phases failed owing to insufficient scattering contrast between P and Si, even using neutron diffraction data. In the case of the HAp structure, it is generally admitted that silicon substitutes the unique phosphorous site (P1). One phosphate PO_4^{3-} is replaced by one silicate SiO_4^{4-} . The charge imbalance is then ensured either by the departure of a hydroxyl group with vacancy creation [15] or by hydroxylation of an O^{2-} anion as in the case of the oxy-hydroxyapatite phase [30]. The case of β -TCP is less trivial, as three crystallographic independent phosphorous sites are present. Attempts to localize Si atoms in

β -TCP phase during the joint Rietveld refinement always indicate the presence of a silicon atom in the P2 site of β -TCP (about 20% of Si would substitute for the P2 site in the $\text{Si}_{0.5}$ -BCP sample). Nevertheless, owing to the extremely high standard deviation value of this refined silicon occupancy (standard deviation and refined value were equivalent), the results are not considered here. A high-resolution-high-intensity neutron diffractometer is needed for accurate refinement of the silicon insertion in these calcium phosphate phases. Such experiments are under way. The use of ^{29}Si NMR spectroscopy is also of great interest for differentiating, locating and quantifying the different types of silicon population, as well as for eventually identifying the presence of silica-gel, as reported by Gasquères et al. [41]. The results are discussed in Section 3.4. Despite the known α -TCP stabilizing feature of Si [20], only the β -TCP polymorph was found in the BCP sample (no trace of α -TCP was observed on the diffraction patterns). The absence of α -TCP in the samples indicates a relatively low silicon substitution in the TCP phase, much less than 10 at.% of Si substituted for P [42].

The tetrahedral distortion index ($\text{TDI} = \frac{1}{6} \sum_{i=1}^6 |\text{OPO}_i - \text{OPO}_m|$, with OPO_i each of the six angles between the central P atom and its four oxygen atoms, and OPO_m their average) is mentioned in the literature as a potential indicator of the Si-substitution level in the HAp phase [15,30,37]. TDI calculation from the data (see Table 3) did not correlate with the silicon substitution level. In the first step, the TDI increases weakly from 1.47 ($\text{Si}_{0.0}$ -BCP) to 1.54 ($\text{Si}_{0.1}$ -BCP), and then decreases below unity (0.83 for $\text{Si}_{0.2}$ -BCP and 0.97 for $\text{Si}_{0.5}$ -BCP) indicating a less distorted phosphate tetrahedron when substituted by silicate. Contrary to these observations, the phosphate distortion values from the literature increase when silicon is introduced in HAp: Gibson et al. observed a large increase in TDI from 1.85 for $x = 0.0$ to 2.75 for $x = 0.4$ [15], and Arcos et al. indicated a weaker increase from 1.93 for $x = 0.0$ to 2.10 for $x = 0.33$ [30]. TDI is definitively not an accurate index for following the silicon substitution level, as values range between 1.47 (this work) and 1.93 [30] in silicon-free HAp, and as silicon insertion led either to a

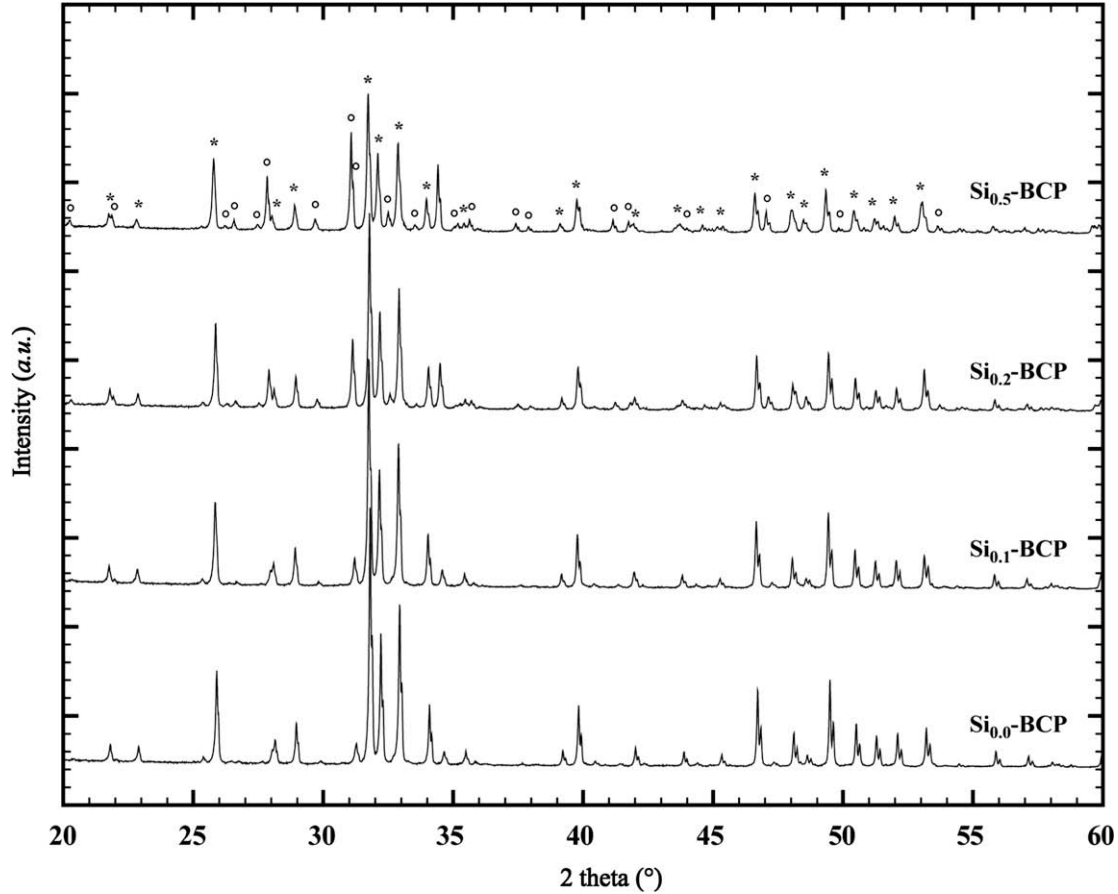


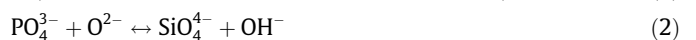
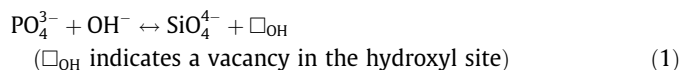
Fig. 2. Zoom in the 2θ range $20\text{--}60^\circ$ of the X-ray powder pattern for the four samples ($\text{Si}_{0.0}\text{-BCP}$, $\text{Si}_{0.1}\text{-BCP}$, $\text{Si}_{0.2}\text{-BCP}$, $\text{Si}_{0.5}\text{-BCP}$). Diffraction peaks from HAp and $\beta\text{-TCP}$, respectively, are indicated by stars and circles, respectively, at the top of the figure.

large increase (up to 2.75 [15]) or to a net decrease (up to 0.83, this work). Interatomic distances $d_{\text{P-O}}$ did not correlate with the silicon substitution level either. The mean interatomic distance $\overline{d_{\text{P-O}}}$ is not sensitive to silicon substitution (Table 3). And the tetrahedral elongation index (TEI, here defined by $(d_{\text{P-O}}^{\text{max}} - d_{\text{P-O}}^{\text{min}})/\overline{d_{\text{P-O}}}$, where $d_{\text{P-O}}^{\text{max}}$, $d_{\text{P-O}}^{\text{min}}$ and $\overline{d_{\text{P-O}}}$ denote the longer, shorter and average P—O distances, respectively, in the phosphate tetrahedron) shows a non-monotonous variation with increasing x value (Table 3). The variation in TEI (which decreases in the first step, before increasing) is the reverse of the variation in TDI.

3.3. Estimation of the chemical composition of the Si-substituted HAp phases

Consideration of electroneutrality combined with the site occupancies of the Ca^{2+} , PO_4^{3-} , O^{2-} and OH^- ions allows a chemical formula to be proposed for the silicon-substituted HAp phases. This calculus matches perfectly well in the case of the silicon-free $\text{Si}_{0.0}\text{-BCP}$ sample for which the refined chemical composition of the HAp phase is $\text{Ca}_{9.89}(\text{PO}_4)_{5.90}[(\text{OH})_{1.88}\text{O}_{0.10}\square_{0.02}]$; with \square corresponding to oxygen vacancy (Table 4). The refined anionic charges (19.78 negative charges by considering $5.90\text{PO}_4^{3-} + 1.88\text{OH}^- + 0.10\text{O}^{2-}$) compensate exactly the refined cationic charges (19.78 positive charges by considering 9.89Ca^{2+}). When this calculation was applied to Si-substituted samples, an excess positive charge was systematically obtained. The amount of inserted silicate was then calculated by considering the non-isocharge substitution of SiO_4^{4-} for PO_4^{3-} . Results of such estimated chemical composition of HAp are given in Table 4. No HPO_4^{2-} were taken into consideration here, as the H2 site, identified by Arcos et al. for Si-substituted HAp sample

synthesized by the ceramic route [30], was systematically found to be empty in the samples (Table 3). The calculated amount of silicate inserted in HAp was found to increase with the x nominal value. Nevertheless, about one-third of the silicon determined by chemical analyses (Table 1) was found to be inserted in the HAp phase only: HAp from the $\text{Si}_{0.1}\text{-BCP}$ sample contains 0.03 mol. silicate against 0.09 found by chemical analysis (33 mol.%), HAp from $\text{Si}_{0.2}\text{-BCP}$ sample contains 0.06 mol. silicate against 0.15 found by chemical analysis (40 mol.%), and HAp from $\text{Si}_{0.5}\text{-BCP}$ sample contains 0.16 mol. silicate against 0.39 found by chemical analysis (41 mol.%). The other two-thirds of the silicon atoms should be inserted in $\beta\text{-TCP}$ phase, in agreement with a previous observation made on variation in the unit cell volumes of both HAp and $\beta\text{-TCP}$ phases. The HAp phase from the BCP samples is slightly calcium and phosphate deficient and contains small amounts of vacancies in the hydroxyl site. The whole calcium deficiency of HAp was localized in the Ca1 site, i.e., the calcium site that is not connected to the hydroxyl site (see Fig. 4 in Ref. [36]). The deficit of charge is imbalanced by the $\text{OH}^-/\text{O}^{2-}$ ratio. When introducing the silicate anion into the HAp structure, the deficiency of calcium decreases, hydroxyl vacancies increase, and the $\text{OH}^-/\text{O}^{2-}$ ratio decreases (from 18.8 for $\text{Si}_{0.0}\text{-BCP}$ to 10.2 for $\text{Si}_{0.5}\text{-BCP}$, owing to a continuous decrease in the amount of OH^- combined with an increase in the amount of O^{2-}). The two following mechanisms were proposed to explain the silicate substitution for phosphate into HAp [15,30]:



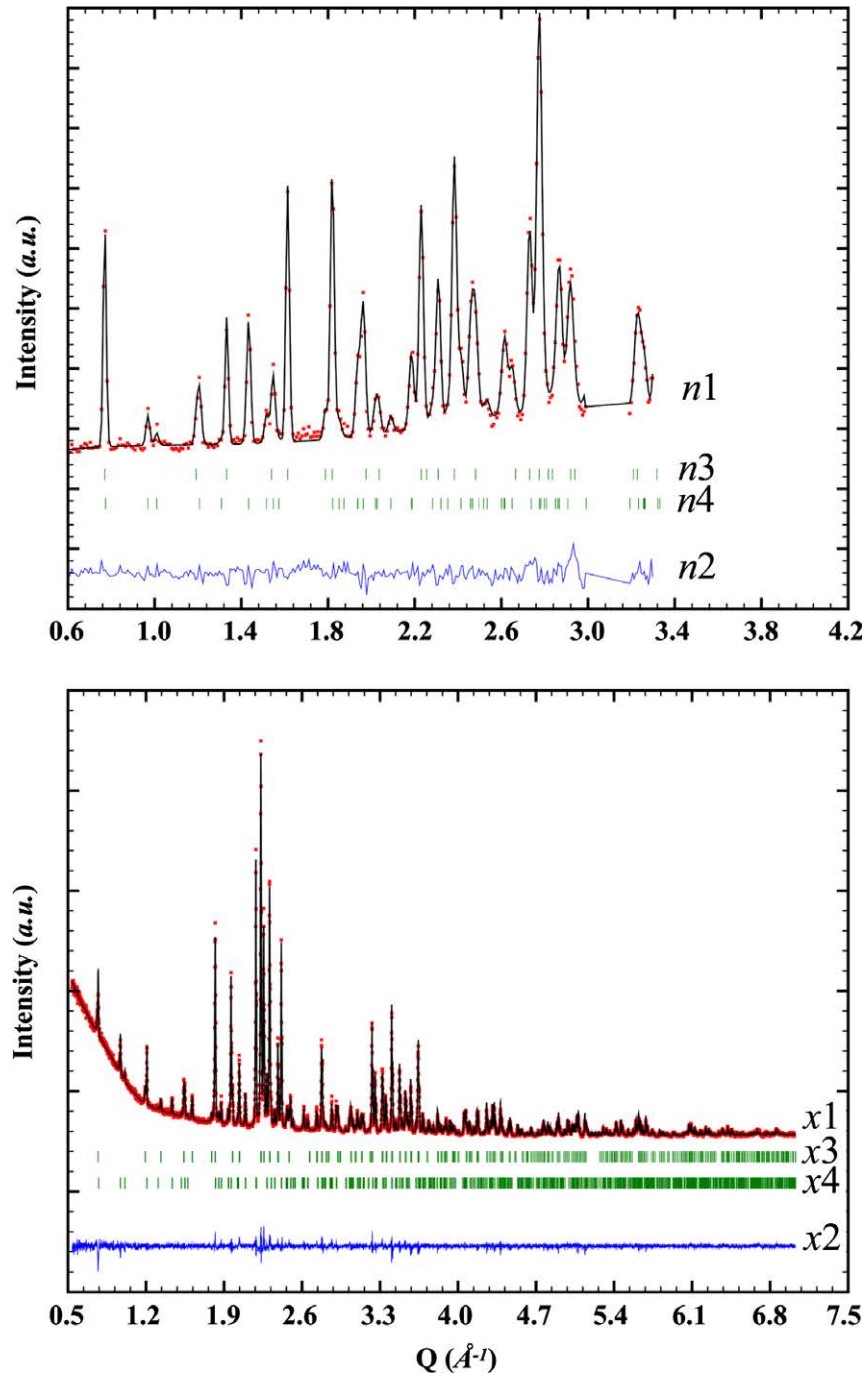


Fig. 3. Observed (red dots) and refined (black lines) diffraction patterns (x1, respectively, n1), difference lines (x2, respectively, n2), and Bragg peaks position of HAp (x3, respectively, n3) and β -TCP (x4, respectively, n4) of joint Rietveld refinement of X-ray data (bottom), respectively, neutron data (top) for $\text{Si}_{0.5}$ -BCP sample.

Table 2

Joint Rietveld refinement results: quantitative analyses, lattice parameters, unit cell volumes and average apparent size; standard deviations are indicated in brackets.

Sample	HAp phase					β -TCP phase				
	wt.%	a (Å)	c (Å)	V (Å ³)	L_c (Å) ^a	wt.%	a (Å)	c (Å)	V (Å ³)	L_c (Å) ^a
$\text{Si}_{0.0}$ -BCP	91	9.42481(6)	6.88600(5)	529.715(6)	2200	9	10.3573(3)	37.172(2)	3453.4(2)	1800
$\text{Si}_{0.1}$ -BCP	89	9.42387(6)	6.88887(5)	529.830(7)	2100	11	10.3655(2)	37.182(1)	3459.7(2)	1800
$\text{Si}_{0.2}$ -BCP	72	9.4264(1)	6.8927(1)	530.41(1)	1900	28	10.3988(2)	37.315(1)	3494.4(1)	1900
$\text{Si}_{0.5}$ -BCP	60	9.4283(1)	6.9062(1)	531.66(1)	1250	40	10.4122(2)	37.3276(8)	3504.7(1)	2050

^a Average coherent domain size determined by the diffraction line broadening in course of the Rietveld analyses.

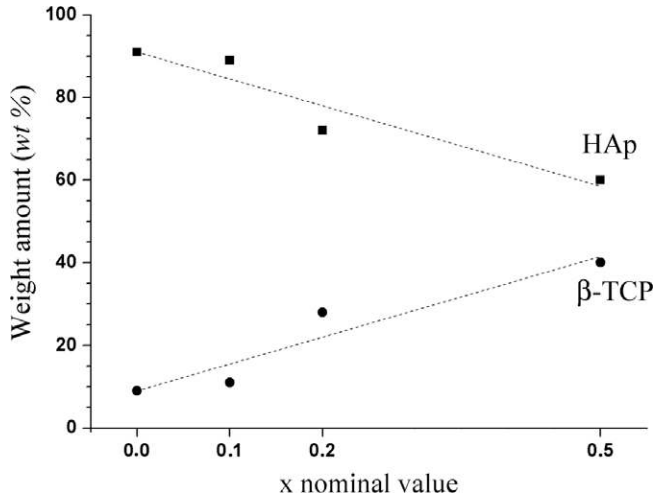
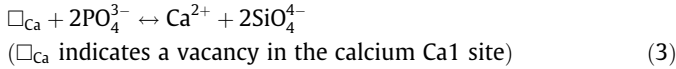
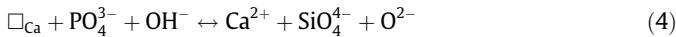


Fig. 4. Quantitative phase Rietveld analyses results: squares and circles indicate, respectively, the weight amounts of HAp and β -TCP phases. Dotted linear lines are just guides for the eyes.

Mechanism (1) induces a decrease in the OH^- amount and an increase in the vacancy in the hydroxyl site in agreement with experimental observations. Mechanism (2) should lead to a decrease in the amount of O^{2-} and an increase in the amount of OH^- , contrary to experimental observations. Another mechanism, implying a calcium cation, should be considered to take into account the increase in the amount of Ca^{2+} :



Mechanism (3) explains the increase in the amount of Ca^{2+} when silicon is inserted, but not the increase in O^{2-} . Then the $\text{OH}^-/\text{O}^{2-}$ couple should be considered in this mechanism as follows:



Mechanisms (1) and (4) explain all the observed variations: substitution of silicate for phosphate is accompanied by an increase in the amounts of Ca^{2+} , O^{2-} and vacancies in the hydroxyl site (\square_{OH}), and a decrease in the amount of OH^- in order to ensure charge imbalance.

3.4. NMR characterization

The ^{31}P MAS-NMR spectra of $\text{Si}_{0.0}$ -BCP, $\text{Si}_{0.2}$ -BCP and $\text{Si}_{0.5}$ -BCP (Fig. 7a) presents one main peak at 2.7, 2.8 and 3.0 ppm, respectively, and two broader signals at ~ 0 and ~ 5 ppm whose intensities increase with Si content. The component ~ 0 ppm disappears when the ^{31}P spectrum is recorded with ^1H - ^{31}P CP transfer (Fig. 8), indicating that it corresponds to ^{31}P sites far from ^1H sites. The main peak at ~ 3 ppm remains under CP conditions, as well as a shoulder at ~ 5 ppm, which suggests the presence of ^1H sites in the vicinity of the associated ^{31}P sites. Indeed, the presence of signals at 0 and 3 ppm are in agreement with the presence of the two phases detected by XRD, β -TCP and HAp. HAp is characterized by one single P site, and ^{31}P chemical shift values for stoichiometric HAp ($\text{Ca}_{10}(\text{PO}_4)_6(\text{OH})_2$), deficient HAp ($\text{Ca}_9\text{HPO}_4(\text{PO}_4)_5\text{OH}$) and poorly crystallized HAp were reported to be 2.9, 3.0 and 3.3 ppm, respectively, with the corresponding line width of 36, 66 and 107 Hz (under MAS at 5 kHz and high power proton decoupling) [43]. β -TCP is instead characterized by three distinct crystallographic P sites. However, since one Ca site close to two of the three P sites has a partial occupancy factor of 0.5, five NMR signals are expected, and the published ^{31}P NMR spectrum of β -TCP was so

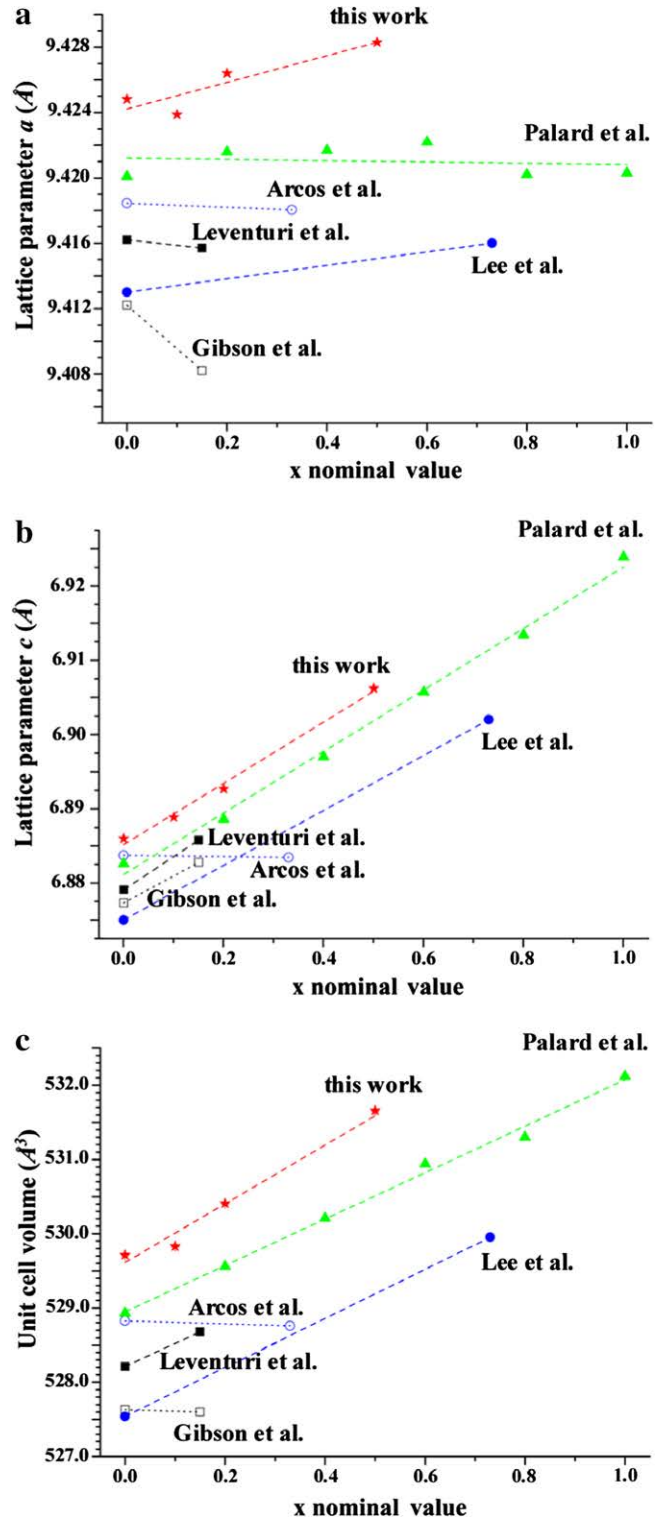


Fig. 5. Variation of the lattice parameters a (a) and c (b) and of the unit cell volume (c) for the HAp phase as a function of the x nominal value from this work and the previously reported data in the literature. Dashed lines are linear fittings of the various data.

far satisfactorily simulated with five resonance peaks [44,45]. The most intense peak ~ 0 ppm is clearly observed in Fig. 7a. Its intensity increases with the Si content, in agreement with the β -TCP content calculated from Rietveld refinements. Also the peak at ~ 3 ppm assigned to HAp broadens (from LWHM = 45 Hz in $\text{Si}_{0.0}$ -BCP, 70 Hz in $\text{Si}_{0.2}$ -BCP to 165 Hz in $\text{Si}_{0.5}$ -BCP).

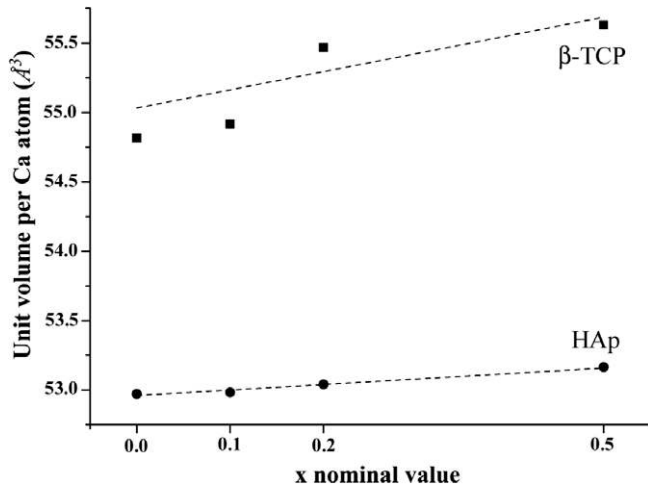


Fig. 6. Variation of unit volume per Ca atom for both HAp and β -TCP phases as a function of the x nominal value. Dashed lines are linear fittings.

The ^1H MAS-NMR spectra of $\text{Si}_{0.0}$ -BCP, $\text{Si}_{0.2}$ -BCP and $\text{Si}_{0.5}$ -BCP (Fig. 7b) are dominated by one peak at 0 ppm, characteristic of OH groups in an apatite structure, and one small component at 5.2 ppm, only present in $\text{Si}_{0.2}$ -BCP and $\text{Si}_{0.5}$ -BCP, which accounts for 8% and 18% of the total ^1H signal intensity, respectively. As observed for the ^{31}P signal of the apatite structure at ~ 3 ppm, the ^1H signal broadens with the Si content from LWHM = 115 Hz in $\text{Si}_{0.0}$ -BCP, 165 Hz in $\text{Si}_{0.2}$ -BCP to 245 Hz in $\text{Si}_{0.5}$ -BCP. The concomitant broadening of the ^{31}P and ^1H resonances due to HAp with the Si content suggests that Si atoms are inserted in the HAp framework (as will be established later with the ^{29}Si NMR experiments), which causes a broadening of the ^{31}P and ^1H site distributions.

Two-dimensional ^1H - ^{31}P HETCOR spectra recorded on $\text{Si}_{0.2}$ -BCP and $\text{Si}_{0.5}$ -BCP (Fig. 9) show an expected correlation between the ^{31}P signal at ~ 3 ppm and the ^1H signal at ~ 0 ppm characteristic of the apatite structure. More interestingly, it shows that the ^1H signal at 5.2 ppm correlates mainly with a ^{31}P signal at ~ 5 ppm and to a minor extent with the main ^{31}P signal at ~ 3 ppm. The presence of this last correlation shows that these protons, which are present only in the Si-containing samples, are part of the apatite phase. Comparison of the ^{31}P magnetization build-up of the

Table 3
Joint Rietveld refinement results of HAp phase.

Sample		$\text{Si}_{0.0}$ -BCP	$\text{Si}_{0.1}$ -BCP	$\text{Si}_{0.2}$ -BCP	$\text{Si}_{0.5}$ -BCP
Ca1 (4f)	Z	0.0025(7)	0.0020(7)	0.002(1)	0.001(1)
	B_{Ca1} (\AA^2)	2.02(4)	2.10(4)	2.31(8)	2.53(8)
	Occ.	0.973(3)	0.970(3)	0.976(7)	0.985(9)
Ca2 (6h)	x	0.2456(4)	0.2462(4)	0.2460(6)	0.2457(7)
	y	0.9925(4)	0.9924(4)	0.9916(7)	0.9907(8)
	B_{Ca2} (\AA^2)	$=B_{\text{Ca1}}$	$=B_{\text{Ca1}}$	$=B_{\text{Ca1}}$	$=B_{\text{Ca1}}$
	Occ.	1(-)	1(-)	1(-)	1(-)
P1 (6h)	x	0.3969(5)	0.3970(4)	0.3963(8)	0.3960(9)
	y	0.3675(5)	0.3676(4)	0.3651(8)	0.3658(9)
	B_{P1} (\AA^2)	2.25(8)	2.23(8)	2.5(1)	2.8(1)
	Occ.	0.983(4)	0.980(4)	0.983(7)	0.987(9)
O1 (6h)	x	0.3269(8)	0.3271(8)	0.325(1)	0.324(1)
	y	0.4854(8)	0.4847(8)	0.488(1)	0.486(1)
	B_{O1} (\AA^2)	2.32(9)	2.41(9)	2.2(2)	2.2(2)
	Occ.	0.985(6)	0.980(4)	0.983(9)	0.987(9)
O2 (6h)	x	0.5880(8)	0.5871(8)	0.586(1)	0.585(1)
	y	0.4664(9)	0.4653(9)	0.466(1)	0.468(1)
	B_{O2} (\AA^2)	$=B_{\text{O1}}$	$=B_{\text{O1}}$	$=B_{\text{O1}}$	$=B_{\text{O1}}$
	Occ.	0.985(6)	0.980(4)	0.983(9)	0.987(9)
H2 (6h)	x	0.4746(-)	0.4746(-)	0.4746(-)	0.4746(-)
	y	0.1666(-)	0.1666(-)	0.1666(-)	0.1666(-)
	B_{H2} (\AA^2)	$=1.2 \times B_{\text{O1}}$	$=1.2 \times B_{\text{O1}}$	$=1.2 \times B_{\text{O1}}$	$=1.2 \times B_{\text{O1}}$
	Occ.	0.008(6)	0.012(8)	0.01(1)	0.01(1)
O3 (12i)	x	0.3401(6)	0.3401(6)	0.341(1)	0.342(1)
	y	0.2562(6)	0.2562(6)	0.258(1)	0.258(1)
	z	0.0691(6)	0.0695(6)	0.069(1)	0.070(1)
	B_{O3} (\AA^2)	$=B_{\text{O1}}$	$=B_{\text{O1}}$	$=B_{\text{O1}}$	$=B_{\text{O1}}$
	Occ.	0.985(6)	0.980(4)	0.983(9)	0.987(9)
O4 (4e)	z	0.202(3)	0.203(2)	0.199(4)	0.196(4)
	B_{O4} (\AA^2)	$=B_{\text{O1}}$	$=B_{\text{O1}}$	$=B_{\text{O1}}$	$=B_{\text{O1}}$
	Occ.	0.495(5)	0.490(6)	0.48(1)	0.45(1)
H4 (4e)	z	0.077(7)	0.084(8)	0.09(1)	0.08(1)
	B_{H4} (\AA^2)	$=1.2 \times B_{\text{O1}}$	$=1.2 \times B_{\text{O1}}$	$=1.2 \times B_{\text{O1}}$	$=1.2 \times B_{\text{O1}}$
	Occ.	0.470(8)	0.458(9)	0.45(2)	0.41(2)
$d_{\text{O4-H4}}$ (\AA)		0.86(5)	0.82(6)	0.8(1)	0.79(6)
$\overline{d_{\text{P-O}}}$ (\AA) ^a		1.548	1.543	1.548	1.543
TEI ^a		0.013	0.006	0.052	0.045
TDI ^a		1.47	1.54	0.83	0.97
χ^2 ^b		2.48, 6.30	2.23, 3.91	2.53, 7.84	2.09, 6.15

^a TEI and TDI formulae are given in the text. $\overline{d_{\text{P-O}}}$ is the average interatomic distance of the phosphate tetrahedron.

^b Rietveld refinement accuracy for X-ray and neutron patterns, respectively.

Table 4
Proposed chemical formulae for HAp phases.

Sample	Refined atomic amount	Charge imbalance	Calculated chemical composition	
Si _{0.0} -BCP	Ca ²⁺	9.89	19.78 ⁺ 19.78 ⁻ → 0.00 SiO ₄ ⁴⁻	Ca _{9.89} (PO ₄) _{5.90} [(OH) _{1.88} O _{0.10} □ _{0.02}]
	PO ₄ ³⁻	5.90		
	OH ⁻	1.88		
	O ²⁻	0.10		
Si _{0.1} -BCP	Ca ²⁺	9.88	19.76 ⁺ 19.73 ⁻ → 0.03 SiO ₄ ⁴⁻	Ca _{9.88} [(PO ₄) _{5.85} (SiO ₄) _{0.03}][(OH) _{1.83} O _{0.13} □ _{0.04}]
	PO ₄ ³⁻	5.88		
	OH ⁻	1.83		
	O ²⁻	0.13		
Si _{0.2} -BCP	Ca ²⁺	9.90	19.80 ⁺ 19.74 ⁻ → 0.06 SiO ₄ ⁴⁻	Ca _{9.90} [(PO ₄) _{5.84} (SiO ₄) _{0.06}][(OH) _{1.80} O _{0.12} □ _{0.08}]
	PO ₄ ³⁻	5.90		
	OH ⁻	1.80		
	O ²⁻	0.12		
Si _{0.5} -BCP	Ca ²⁺	9.94	19.88 ⁺ 19.72 ⁻ → 0.16 SiO ₄ ⁴⁻	Ca _{9.94} [(PO ₄) _{5.76} (SiO ₄) _{0.16}][(OH) _{1.64} O _{0.16} □ _{0.20}]
	PO ₄ ³⁻	5.92		
	OH ⁻	1.64		
	O ²⁻	0.16		

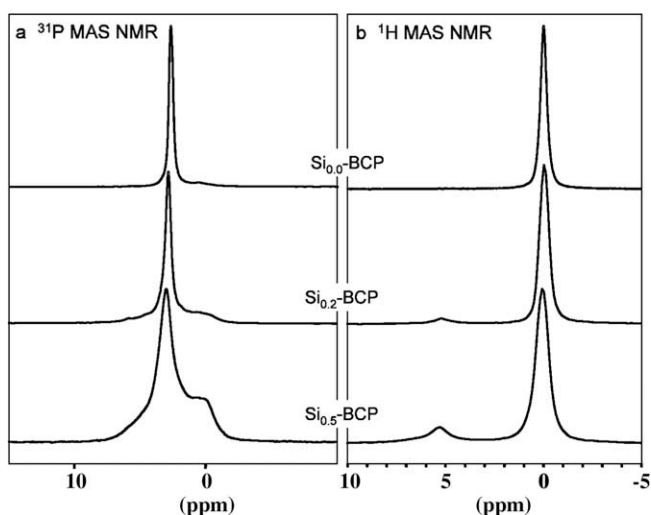


Fig. 7. ³¹P (a) and ¹H (b) MAS-NMR spectra of the Si_{0.0}-BCP, Si_{0.2}-BCP and Si_{0.5}-BCP samples.

two signals at 2.9 and 4.6 ppm in Si_{0.5}-BCP during a ¹H-³¹P CP transfer suggests closer proximity between ³¹P and ¹H sites for the peak at 4.6 ppm with respect to the main apatite signal at 2.9 ppm. This is confirmed by refinements where the distance P1-H4 decreases from 3.80 Å for undoped BCP to 3.76 Å for the Si-substituted sample. However, the build-up is slower than for POH groups in monetite, CaHPO₄ (P-H distance = 1.90–2.3 Å). This experiment shows that insertion of Si atoms in HAp leads to the formation of new P and H sites. The ¹H chemical shift value, which is very different from that of apatite OH, could suggest that the corresponding OH groups are engaged in H-bonding. Considering this new experimental observation can allow a more refined description of the Si-substituted HAp. In effect in HAp structure, each hydroxyl OH is surrounded by three phosphate anions with three distances H4-P1 of 3.85 Å, and three distances H4-O3 of 2.89 Å (three distances O4-O3 of 3.03 Å). Considering the previously described mechanism for substitution of a phosphate anion for a silicate anion, and taking into account the creation of a hydrogen bond between the hydroxyl group (defined by O4 and H4 atoms) with oxygen O3 from the silicate, two OH⁻ are now found engaged in hydrogen bonding per inserted silicate anion. In effect, a phosphate group (and thus also a silicate group) is defined by two oxy-

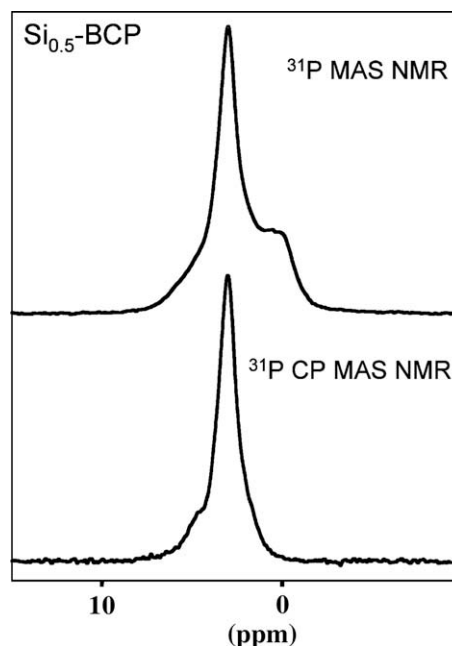


Fig. 8. Comparison between ³¹P MAS-NMR and CP-MAS-NMR spectra recorded on Si_{0.5}-BCP sample.

gen O3 (plus 1 oxygen O1 and 1 oxygen O2). This situation is depicted in Fig. 10.

Taking into account the formula (Ca_{9.94}[(PO₄)_{5.76}(SiO₄)_{0.16}][(OH)_{1.64}O_{0.16}□_{0.20}]) derived for Si_{0.5}-BCP in Table 4, and considering two OH⁻ engaged in hydrogen bonding per silicate, one can refine the formula to Ca_{9.94}[(PO₄)_{5.76}(SiO₄(OH)₂)_{0.16}][(OH)_{1.32}O_{0.16}□_{0.20}] introducing two types of OH⁻ groups: 0.32 in the hydrogen bond with silicate, and 1.32 in the normal HAp position. Considering the refined amount of Si, this yields 20% of H engaged in hydrogen bonding with silicates, and 80% in the normal HAp position, in perfect agreement with ¹H NMR data (18%/82%). For the same considerations for the lower doping level Si_{0.2}-BCP, the derived formula (Ca_{9.90}[(PO₄)_{5.84}(SiO₄)_{0.06}][(OH)_{1.80}O_{0.12}□_{0.08}]) from Table 4 gives a refined formula Ca_{9.90}[(PO₄)_{5.84}(SiO₄(OH)₂)_{0.06}][(OH)_{1.68}O_{0.12}□_{0.08}] corresponding to 7% and 93%, respectively, for protons engaged in hydrogen bonding and normal ones, again in extremely good agreement with NMR data (8%/92%).

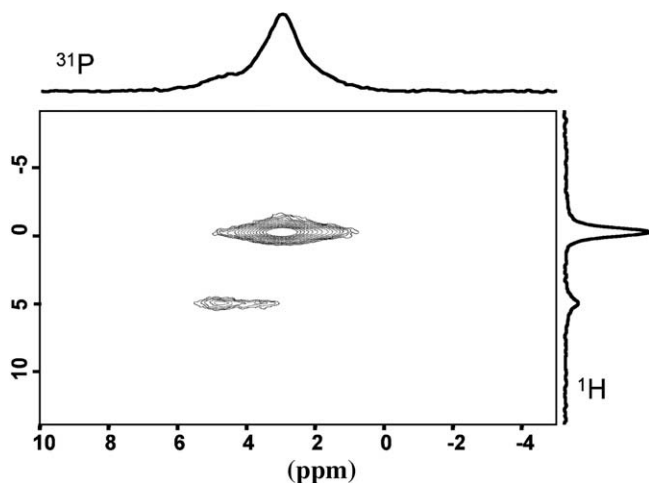


Fig. 9. ^1H - ^{31}P HETCOR experiment recorded on the $\text{Si}_{0.5}$ -BCP sample.

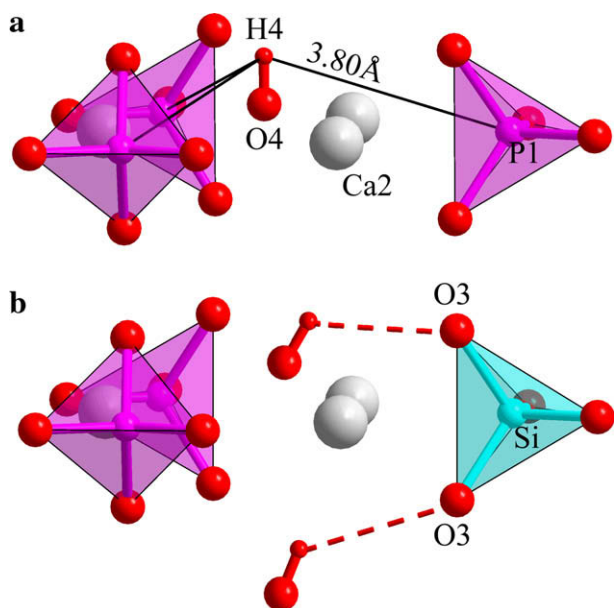


Fig. 10. Representation of the environment of hydroxyl group in HAp structure: as observed in the undoped HAp phase (a) and in the case of silicon substitution involving two hydrogen bonds per silicate anion (b). Grey, pink, light blue, large red and small red spheres correspond, respectively, to calcium, phosphorus, silicon, oxygen and hydrogen atoms. Broken red lines indicate hydrogen bonding.

The ^{29}Si MAS-NMR spectra recorded on $\text{Si}_{0.2}$ -BCP (Fig. 11) and $\text{Si}_{0.5}$ -BCP (not shown here) exhibit three signals at -78 , -73 and -69 ppm. Such values correspond to SiO_4^{4-} silicate ions (Q_0). The peaks are broader in $\text{Si}_{0.5}$ -BCP than in $\text{Si}_{0.2}$ -BCP, a feature already observed for the ^{31}P and ^1H resonance lines. No other signals are detected, excluding the presence of condensed silicon species (expected between -85 and -110 ppm), which is in agreement with the XRD data showing only the presence of HAp and β -TCP. In HAp, SiO_4^{4-} silicate ions will occupy the unique PO_4^{3-} site, and a chemical shift value of -73 ppm has already been reported [41]. In β -TCP, the presence of three PO_4^{3-} sites suggests that several ^{29}Si resonances may be expected if silicon atoms are inserted in this phase. Hence, the ^{29}Si MAS-NMR spectra can be interpreted as follows: the main peak at -73 ppm could be safely assigned to silicate sites in HAp, while the other two peaks at -69 and -78 ppm could be due to silicate sites in β -TCP. However, the peak at -73 ppm accounts for 75% of the total Si intensity in both

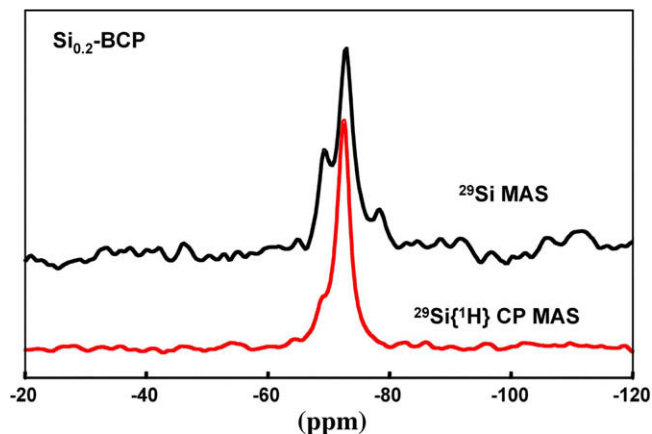


Fig. 11. ^{29}Si and $^{29}\text{Si}\{^1\text{H}\}$ CP-MAS-NMR spectra of $\text{Si}_{0.2}$ -BCP.

samples, which is well above the amount of silicon atoms in HAp calculated from the XRD data: 33 and 40 mol.% for $\text{Si}_{0.2}$ -BCP and $\text{Si}_{0.5}$ -BCP, respectively. One can make the assumption that the peak at -73 ppm also contains a contribution from silicate ions in β -TCP. The $^{29}\text{Si}\{^1\text{H}\}$ CP-MAS experiment recorded for the $\text{Si}_{0.2}$ -BCP sample (Fig. 11) confirms the contributions from the two phases with the almost total disappearance of peaks at -69 and -83 ppm under cross-polarization conditions.

4. Conclusions

Silicon-substituted BCP samples were prepared with various amounts of silicon. Joint Rietveld refinements of X-ray and neutron diffraction data allowed the composition of the substituted phases to be determined. Electroneutrality considerations and combination with NMR data allowed refining of the Si-HAp phases formulae introducing two types of hydroxyl anions and vacancies and also to determine the possible substitution mechanisms. The two types of protons as observed in the ^1H NMR spectra offer a new structural description of Si-substituted HAp phases.

A review of structural indicators for the substitution level of Si in HAp clearly shows that parameter c is the best, contrary to what is usually found in the literature.

Altogether, these experimental results offer a very detailed description of silicon substitution in BCP ceramics and should allow a better understanding of the well-documented effect of silicon on the bioactivity of these materials.

Acknowledgements

This work was supported by ANR under project NANOSHAP (ANR-09-BLAN-0120-03). The staff of the D18 diffractometer at ILL (Grenoble France) are gratefully acknowledged.

References

- [1] Dahl SG, Allain PJ, Mauras Y, Boivin G, Ammann P, Tsouderos Y, et al. Incorporation and distribution of strontium in bone. *Bone* 2001;28:446.
- [2] Lagier R, Baud C-A. Magnesium whitlockite, a calcium phosphate crystal of special interest in pathology. *Pathol Res Pract* 2003;199:329.

- [3] Lee RS, Kayser MV, Ali SY. Calcium phosphate microcrystal deposition in the human intervertebral disc. *J Anat* 2006;208(1):13.
- [4] Blumenthal NC, Betts F, Posner AS. Effect of carbonate and biological macromolecules on formation and properties of hydroxyapatite. *Calcif Tissue Res* 1975;18:81.
- [5] Bigi A, Cozzazzi G, Panzavolta S, Ripamonti A, Roveri N, Romanello M, et al. Chemical and structural characterization of the mineral phase from cortical and trabecular bone. *J Inorg Biochem* 1997;68:45.
- [6] Solomons CC, Neuman WF. On the mechanisms of calcification: the remineralization of dentin. Sobel, A.E.; Rockenmacher, M.; Kramer, B. *J Biol Chem* 1960;235:2502.
- [7] LeGeros RZ. Calcium phosphates in oral biology and medicine. *Monogr Oral Sci* 1991:15.
- [8] de Bruijn JD, Bovell YP, van Blitterswijk CA. Structural arrangements at the interface between plasma-sprayed calcium phosphates and bone. *Biomaterials* 1994;15:543.
- [9] Gross KA, Berndt CC. Thermal processing of hydroxyapatite for coating production. *J Biomed Mater Res* 1998;39:580.
- [10] Kobayashi T, Shingaki S, Nakajima T, Hanada K. Chin augmentation with porous hydroxyapatite blocks. *J Long Term Eff Med Implants* 1993;3:283.
- [11] Bonfield W, Grynblas MD, Tully AE, Bowman J, Abram J. Hydroxyapatite reinforced polyethylene—a mechanically compatible implant material for bone-replacement. *Biomaterials* 1981;2:185.
- [12] Hench LL. Bioceramics—from concept to clinic. *J Am Ceram Soc* 1991;74:1487.
- [13] LeGeros RZ. Effect of carbonate on the lattice parameters of apatite. *Nature* 1965;206:403.
- [14] Nelson DGA, Featherstone JDB. Preparation, analysis, and characterization of carbonated apatites. *Calcif Tissue Int* 1982;34:69.
- [15] Gibson IR, Best SM, Bonfield W. Chemical characterization of silicon-substituted hydroxyapatite. *J Biomed Mater Res* 1999;44:422.
- [16] Patel N, Best SM, Bonfield W, Gibson IR, Hing KA, Damien E, et al. A comparative study on the in vivo behavior of hydroxyapatite and silicon substituted hydroxyapatite granules. *J Mater Sci Mater Med* 2002;13:1199.
- [17] Porter AE, Patel N, Skepper JN, Best SM, Bonfield W. Comparison of in vivo dissolution processes in hydroxyapatite and silicon-substituted hydroxyapatite bioceramics. *Biomaterials* 2003;24:4609.
- [18] Porter AE, Patel N, Skepper JN, Best SM, Bonfield W. Effect of sintered silicate-substituted hydroxyapatite on remodelling processes at the bone-implant interface. *Biomaterials* 2004;25:3303.
- [19] Hing KA, Revell PA, Smith N, Buckland T. Effect of silicon level on rate, quality and progression of bone healing within silicate-substituted porous hydroxyapatite scaffolds. *Biomaterials* 2006;27:5014.
- [20] Pietak AM, Reid JW, Stott MJ, Sayer M. Silicon substitution in the calcium phosphate bioceramics. *Biomaterials* 2007;28:4023.
- [21] Carlisle EM. Silicon. A possible factor in bone calcification. *Science* 1970;167:179.
- [22] Carlisle EM. Silicon—a requirement in bone-formation independent of vitamin-d1. *Calcif Tissue Int* 1981;33:27.
- [23] Schwarz K, Milne DB. Growth-promoting effects of silicon in rats. *Nature* 1972;239:333.
- [24] Bohner M. Silicon-substituted calcium phosphates—a critical view. *Biomaterials* 2009;5(9):6403.
- [25] Schwartz C, Liss P, Jacquemaire B, Lecestre P, Fraysinnet P. Biphasic synthetic bone substitute use in orthopaedic and trauma surgery: clinical, radiological and histological results. *J Mater Sci Mater Med* 1999;10:821.
- [26] LeGeros RZ, Lin S, Rohanizadeh R, Mijares D, LeGeros JP. Biphasic calcium phosphate bioceramics: preparation, properties and applications. *J Mater Sci Mater Med* 2003;14:201.
- [27] Livingston Arinze T, Tran T, McAlary J, Daculsi G. A comparative study of biphasic calcium phosphate ceramics for human mesenchymal stem-cell-induced bone formation. *Biomaterials* 2005;26:3631.
- [28] Bouler JM, Trecant M, Delecrin J, Royer J, Passuti N, Daculsi G. Macroporous biphasic calcium phosphate ceramics: influence of five synthesis parameters on compressive strength. *J Biomed Mater Res* 1996;32:603.
- [29] Gomes S, Renaudin G, Jallot E, Nedelec J-M. Structural characterization and biological fluid interaction of sol-gel-derived Mg-substituted biphasic calcium phosphate ceramics. *Appl Mater Interfaces* 2009;1:505.
- [30] Arcos D, Rodriguez-Carvajal J, Vallet-Regi M. The effect of the silicon incorporation on the hydroxylapatite structure. A neutron diffraction study. *Solid State Sci* 2004;6:987.
- [31] Balas F, Pérez-Pariente J, Vallet-Regi M. In vitro bioactivity of silicon-substituted hydroxyapatites. *J Biomed Mater Res* 2003;66A:364.
- [32] Vallet-Regi M, Arcos D. Silicon substituted hydroxyapatites. A method to upgrade calcium phosphate based implants. *J Mater Chem* 2005;15:1509.
- [33] Rodriguez-Carvajal J. PROGRAM FullProf.2k – version 3.20, Laboratoire Léon Brillouin (CEA-CNRS), France; 2005 (FullProf.2k manual available on http://www-llb.cea.fr/fullweb/fp2k/fp2k_divers.htm). See also Rodriguez-Carvajal J, Roisnel T. EPDIC-8, 23–26 May 2002. Trans. Tech. Publication Ltd.: Uppsala, Sweden. *Mater Sci Forum* 2004;123:443.
- [34] Rodriguez-Lorenzo LM, Hart JN, Gross KA. Structural and chemical analysis of well-crystallized hydroxyfluorapatites. *J Phys Chem B* 2003;107:8316.
- [35] Yashima M, Sakai A, Kamiyama T, Hoshikawa A. Crystal structure analysis of beta-tricalcium phosphate $\text{Ca}_3(\text{PO}_4)_2$ by neutron powder diffraction. *J Solid State Chem* 2003;175:272.
- [36] Renaudin G, Laquerrière P, Filinchuk Y, Jallot E, Nedelec J-M. Structural characterization of sol-gel derived Sr-substituted calcium phosphates with anti-osteoporotic and anti-inflammatory properties. *J Mater Chem* 2008;18:3593.
- [37] Leventouri Th, Bunaciu CE, Perdikatsis V. Neutron powder diffraction studies of silicon-substituted hydroxyapatite. *Biomaterials* 2003;24:4205.
- [38] Lee YJ, Kim YH, Kim SR, Jung SJ, Riu DH, Song H, et al. Study on the sinterability of silicon substituted hydroxyapatite. *J Korean Ceram Soc* 2003;40:1096.
- [39] Palard M, Champion E, Foucaud S. Synthesis of silicated hydroxyapatite $\text{Ca}_{10}(\text{PO}_4)_{6-x}(\text{SiO}_4)_x(\text{OH})_{2-x}$. *J Solid State Chem* 2008;181:1950.
- [40] Renaudin G, Jallot E, Nedelec J-M. Effect of strontium substitution on the composition and microstructure of sol-gel derived calcium phosphates. *J Sol-Gel Sci Technol* 2009;51(3):287.
- [41] Gasquères G, Bonhomme C, Maquet J, Babonneau F, Hayakawa S, Kanaya T, et al. Revisiting silicate substituted hydroxyapatite by solid-state. *NMR Magn Reson Chem* 2008;46:342.
- [42] Reid JW, Pietak A, Sayer M, Dunfield D, Smith TJN. Phase formation and evolution in the silicon substituted tricalcium phosphate/apatite system. *Biomaterials* 2005;26:2887.
- [43] Miquel JL, Facchini L, Legrand AP, Rey C, Lemaître J. Solid-state NMR to study calcium-phosphate ceramics. *Colloids Surf* 1990;45:427.
- [44] Jakeman R, Cheetham A, Clayden N, Dobson C. A magic angle spinning NMR-study of the phase-diagram $\text{Ca}_{3-x}\text{Zn}_x(\text{PO}_4)_2$. *J Solid State Chem* 1989;78:23.
- [45] Obadia L, Deniard P, Alonso A, Rouillon T, Jobic S, Guicheux J, et al. Effect of sodium doping in beta-tricalcium phosphate on its structure and properties. *Chem Mater* 2006;18:1425.