



HAL
open science

Lack of prognostic significance of “classic” lobular breast carcinoma: a matched, single institution series

Giuseppe Viale, Nicole Rotmensz, Patrick Maisonneuve, Enrico Orvieto, Eugenio Maiorano, Viviana Galimberti, Alberto Luini, Marco Colleoni, Aron Goldhirsch, Alan S. Coates

► **To cite this version:**

Giuseppe Viale, Nicole Rotmensz, Patrick Maisonneuve, Enrico Orvieto, Eugenio Maiorano, et al.. Lack of prognostic significance of “classic” lobular breast carcinoma: a matched, single institution series. *Breast Cancer Research and Treatment*, 2008, 117 (1), pp.211-214. 10.1007/s10549-008-0112-4 . hal-00486592

HAL Id: hal-00486592

<https://hal.science/hal-00486592v1>

Submitted on 26 May 2010

HAL is a multi-disciplinary open access archive for the deposit and dissemination of scientific research documents, whether they are published or not. The documents may come from teaching and research institutions in France or abroad, or from public or private research centers.

L'archive ouverte pluridisciplinaire **HAL**, est destinée au dépôt et à la diffusion de documents scientifiques de niveau recherche, publiés ou non, émanant des établissements d'enseignement et de recherche français ou étrangers, des laboratoires publics ou privés.

Lack of prognostic significance of “classic” lobular breast carcinoma: a matched, single institution series

Giuseppe Viale · Nicole Rotmensz · Patrick Maisonneuve · Enrico Orvieto · Eugenio Maiorano · Viviana Galimberti · Alberto Luini · Marco Colleoni · Aron Goldhirsch · Alan S. Coates

Received: 24 June 2008 / Accepted: 24 June 2008 / Published online: 16 July 2008
© Springer Science+Business Media, LLC. 2008

Abstract Whether invasive lobular carcinoma of the breast per se constitutes a prognostically favorable type has been debated. The present series comprises 301 consecutive “classic” lobular breast carcinomas seen at one institution between 1994 and 2001, compared to an equal number of invasive ductal carcinomas at the same institution during the same period, matched for year of surgery, age, menopausal status, primary tumor size, nodal involvement, hormone receptor status and where possible histological grade. Despite matching, the lobular carcinomas were more frequently multifocal, had more involved nodes, lower grade

and lower proliferative fraction. There was no significant difference in disease-free or overall survival, locoregional relapse or time to distant metastasis between the lobular and ductal groups overall or within any examined subset, though the lobular group showed a trend to earlier appearance of contralateral breast cancer. Classical lobular histology is not an independent factor in the prognosis of early breast cancer.

Keywords Breast cancer · Lobular carcinoma · Prognosis · Matched study

G. Viale (✉)
Division of Pathology and Laboratory Medicine, European Institute of Oncology, University of Milan, Via Ripamonti, 435, 20141 Milan, Italy
e-mail: giuseppe.viale@ieo.it

N. Rotmensz · P. Maisonneuve
Division of Epidemiology and Biostatistics, European Institute of Oncology, Milan, Italy
e-mail: nicole.rotmensz@ieo.it

P. Maisonneuve
e-mail: patrick.maisonneuve@ieo.it

E. Orvieto
Section of Anatomical Pathology, Department of Oncological and Surgical Sciences, University of Padova, Padova, Italy
e-mail: enrico.orvieto@sanita.padova.it

E. Maiorano
Department of Pathological Anatomy, University of Bari, Bari, Italy
e-mail: emaiorano@anatopat.uniba.it

V. Galimberti · A. Luini
Division of Breast Surgery, European Institute of Oncology, Milan, Italy
e-mail: viviana.galimberti@ieo.it

A. Luini
e-mail: alberto.luini@ieo.it

M. Colleoni
Division of Medical Oncology, European Institute of Oncology, Milan, Italy
e-mail: marco.colleoni@ieo.it

A. Goldhirsch
European Institute of Oncology, Milan, Italy
e-mail: aron.goldhirsch@ibcsg.org

A. Goldhirsch
Oncology Institute of Southern Switzerland, Bellinzona, Switzerland

A. S. Coates
International Breast Cancer Study Group, Bern, Switzerland
e-mail: alan.coates@ibcsg.org

A. S. Coates
University of Sydney, Sydney, Australia

Introduction

Carcinoma of the breast may be classified according to their presumed origin from epithelial cells of the secretory lobules or those lining the draining ducts. Pathologists have long recognized specific patterns among breast cancers, but the majority lack these features and are classified as infiltrating ductal carcinomas (IDC) not otherwise specified. Invasive lobular cancers (ILC) are the second most common type, constituting 5–16% of all breast cancer [1–3]. Based on a variety of study designs, some previous authors have concluded that ILC carries a favorable prognosis compared to IDC [4–8], while others have found the outcome of the two groups to be similar [9–19]. In two recent studies with prolonged follow-up, it was noted that the disease-free and overall survival curves crossed, with an initial favorable and later unfavorable impact of ILC type [20, 21].

Several previous series have used a matched design to allow for imbalances of prognostic factors other than ILC type [4, 9, 10, 17, 22]. Among series which compared unmatched groups of ILC and IDC, ILC has been associated with larger primary tumor size [5, 8, 13, 15, 16, 18, 20]; most [5, 13, 15, 16] but not all [12] have reported higher expression of hormone receptors, while the degree of nodal involvement has variously been noted as less [16, 21], similar [12] or greater [5]. There is uniform agreement that the organ distribution of metastatic disease tends to be different, with ILC displaying a tendency to metastasize to the gastrointestinal tract, pelvic organs and retroperitoneum [9, 10, 13, 23].

The experience at the European Institute of Oncology (IEO)

The present series is based on an earlier report of 530 cases of ILC [24] from this institution, describing the more favorable outcome of the classic subtype of ILC as distinct from alveolar, solid, pleomorphic, signet ring histiocytoid or apocrine variants. The 301 cases of classic ILC identified in that study were matched 1:1 with cases of IDC treated at the institution during the same period based on year of surgery, age, menopausal status, primary tumor size, lymph node involvement, hormone receptor status and when possible tumor grade. Matching between the groups was close for most variables with the exceptions that the ILC group had more frequent multifocality ($P < 0.001$); more involved lymph nodes ($P = 0.001$); a lower proliferative fraction as measured by ki67 labeling index [25, 26] ($P = 0.005$); and a higher proportion of histological grade I tumors ($P = 0.022$).

As has been described by others [9, 10, 13, 23], we observed a different pattern of distribution of metastases between the groups, in that ILC was associated with more

metastases to the gastrointestinal tract and pelvic organs. Median follow up was 7.3 years (7.8 years for IDC, 7.0 years for ILC). Disease-free and overall survival curves as well as time to locoregional relapse, distant metastasis, contralateral breast cancer and the appearance of other (non-breast) cancer were prepared for each group by the Kaplan-Meier method and compared by the log rank test. For none of these endpoints was there any significant difference between the ILC and IDC groups. Effects within subgroups defined by age, menopausal status, primary tumor size, multifocality, nodal status, histological grade, hormone receptor status, ki67 labeling index, type of surgery and adjuvant systemic therapy were compared using Cox proportional hazard models. No subgroup showed effects on disease-free or overall survival significantly different from the overall result (Fig. 1).

We conclude that, once allowance is made for routinely collected prognostic factors, the outcome of classic ILC does not differ significantly from IDC (Table 1).

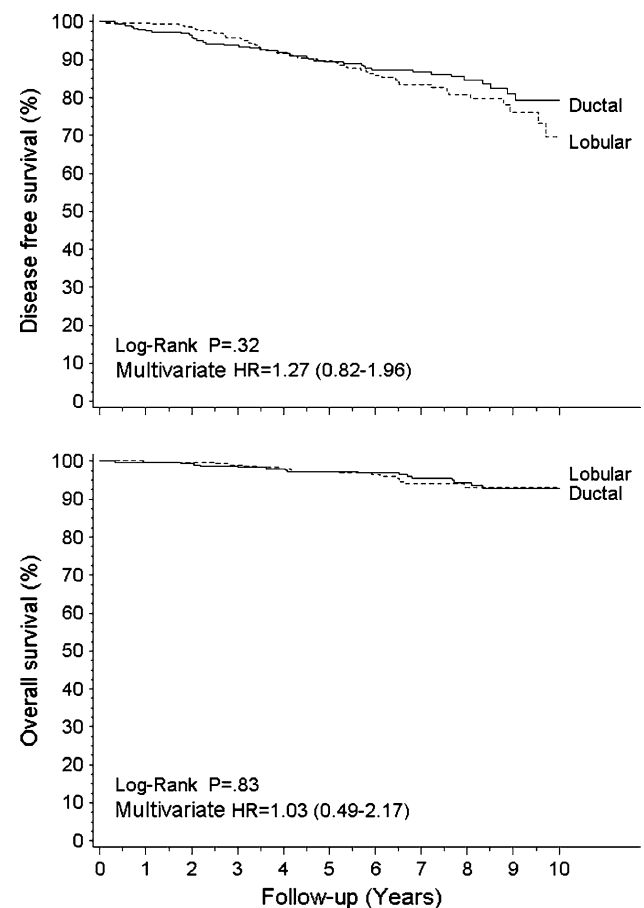


Fig. 1 Disease-free survival (top) and overall survival (below) curves comparing classic infiltrating lobular carcinoma with infiltrating ductal carcinoma. Hazards Ratios (HR) and 95% confidence intervals obtained from multivariate Cox proportional hazards regression model adjusted for age, pT, pN, multifocality, grade, hormonal receptor status, ki67 and type of surgery

Table 1 Patient and tumor characteristics

	All patients	Classical		P-value
		Ductal	Lobular	
All patients	602	301	301	
Age group				
<40	32 (5.3%)	16	16	
40–49	147 (24.4%)	70	77	
50–59	217 (36.0%)	114	103	
60–69	140 (23.3%)	70	70	
70+	66 (11.0%)	31	35	0.97 ^a
Menopausal status				
Pre/peri-menopausal	218 (36.2%)	109	109	
Post-menopausal	184 (63.8%)	192	192	1.00
pT				
pT1	390 (64.8%)	195	195	
pT2	168 (27.9%)	86	82	
pT3–pT4	44 (7.3%)	20	24	0.79 ^a
Multifocality				
Monofocal	465 (77.2%)	256	209	
Multifocal	137 (22.8%)	45	92	<0.0001
pN				
pN0 (AD)	177 (29.4%)	92	85	
Sentinel node negative	189 (31.4%)	101	88	
pN+	212 (35.2%)	106	106	0.79
pNx	24 (4.0%)	2	22	
Number of positive nodes				
None	366 (60.8%)	193	173	
1–3	141 (23.4%)	78	63	
4–10	43 (7.1%)	23	20	
>10	28 (4.7%)	5	23	0.001 ^a
pNx	24 (4.0%)	2	22	
Tumor grade				
Grade 1	319 (53.0%)	145	174	
Grade 2	283 (47.0%)	156	127	0.022
Hormone receptors status				
Estrogen & progesterone receptor negative	31 (5.1%)	15	16	
Estrogen or progesterone receptor positive	571 (94.9%)	286	285	0.85
Proliferative fraction				
ki67 labeling index <20%	471 (78.2%)	222	249	
ki67 labeling index ≥20%	129 (21.4%)	79	50	0.005
Unknown	2 (0.3%)	0	2	
Type of surgery				
Breast conserving surgery	467 (77.6%)	243	224	
Total mastectomy	135 (22.4%)	58	77	0.078
Type of adjuvant systemic therapy				
None	39 (6.5%)	26	13	
Endocrine alone	320 (53.2%)	150	170	
Non-anthracycline	143 (23.8%)	74	69	
Anthracycline	87 (14.5%)	41	46	0.11
Unknown	13 (2.2%)	10	3	

^a Trend

Bold values indicate statistically significant values

References

1. Fisher ER, Gregorio RM, Fisher B et al (1975) The pathology of invasive breast cancer. A syllabus derived from findings of the National Surgical Adjuvant Breast Project (protocol no 4). *Cancer* 36:1–85. doi:10.1002/1097-0142(197507)36:1<1::AID-CNCR2820360102>3.0.CO;2-4
2. Ellis IO, Galea M, Broughton N et al (1992) Pathological prognostic factors in breast cancer. II. Histological type. Relationship with survival in a large study with long-term follow-up. *Histopathology* 20:479–489
3. Martinez V, Azzopardi JG (1979) Invasive lobular carcinoma of the breast: incidence and variants. *Histopathology* 3:467–488. doi:10.1111/j.1365-2559.1979.tb03029.x
4. du Toit RS, Locker AP, Ellis IO et al (1991) An evaluation of differences in prognosis, recurrence patterns and receptor status between invasive lobular and other invasive carcinomas of the breast. *Eur J Surg Oncol* 17:251–257
5. Cristofanilli M, Gonzalez-Angulo A, Sneige N et al (2005) Invasive lobular carcinoma classic type: response to primary chemotherapy and survival outcomes. *J Clin Oncol* 23:41–48. doi:10.1200/JCO.2005.03.111
6. Dian D, Herold H, Mylonas I et al (2008) Survival analysis between patients with invasive ductal and invasive lobular breast cancer. *Arch Gynecol Obstet*. doi:10.1007/s00404-008-0662-z
7. Toikkanen S, Pykkanen L, Joensuu H (1997) Invasive lobular carcinoma of the breast has better short- and long-term survival than invasive ductal carcinoma. *Br J Cancer* 76:1234–1240
8. Silverstein MJ, Lewinsky BS, Waisman JR et al (1994) Infiltrating lobular carcinoma. Is it different from infiltrating duct carcinoma? *Cancer* 73:1673–1677. doi:10.1002/1097-0142(19940315)73:6<1673::AID-CNCR2820730620>3.0.CO;2-B
9. Casolo P, Raspadori A, Drei B et al (1997) Natural history of breast cancer: lobular carcinoma versus ductal carcinoma in our experience. *Ann Ital Chir* 68:43–47
10. Fondrinier E, Guerin O, Lorimier G (1997) A comparative study of metastatic patterns of ductal and lobular carcinoma of the breast from two matched series (376 patients). *Bull Cancer* 84:1101–1107
11. Winchester DJ, Chang HR, Graves TA et al (1998) A comparative analysis of lobular and ductal carcinoma of the breast: presentation, treatment, and outcomes. *J Am Coll Surg* 186:416–422. doi:10.1016/S1072-7515(98)00051-9
12. Mersin H, Yildirim E, Gulben K et al (2003) Is invasive lobular carcinoma different from invasive ductal carcinoma? *Eur J Surg Oncol* 29:390–395. doi:10.1053/ejso.2002.1423
13. Arpino G, Bardou VJ, Clark GM et al (2004) Infiltrating lobular carcinoma of the breast: tumor characteristics and clinical outcome. *Breast Cancer Res* 6:R149–R156. doi:10.1186/bcr767
14. Santiago RJ, Harris EE, Qin L et al (2005) Similar long-term results of breast-conservation treatment for Stage I and II invasive lobular carcinoma compared with invasive ductal carcinoma of the breast: The University of Pennsylvania experience. *Cancer* 103:2447–2454. doi:10.1002/ncr.21071
15. Gonzalez-Angulo AM, Sahin A, Krishnamurthy S et al (2006) Biologic markers in axillary node-negative breast cancer: differential expression in invasive ductal carcinoma versus invasive lobular carcinoma. *Clin Breast Cancer* 7:396–400
16. Tubiana-Hulin M, Stevens D, Lasry S et al (2006) Response to neoadjuvant chemotherapy in lobular and ductal breast carcinomas: a retrospective study on 860 patients from one institution. *Ann Oncol* 17:1228–1233. doi:10.1093/annonc/mdl114
17. Ni MJ, Curran C, Hennessy E et al (2008) Prospective matched-pair comparison of outcome after treatment for lobular and ductal breast carcinoma. *Br J Surg*. doi:10.1002/bjs.6042
18. Molland JG, Donnellan M, Janu NC et al (2004) Infiltrating lobular carcinoma—a comparison of diagnosis, management and outcome with infiltrating duct carcinoma. *Breast* 13:389–396. doi:10.1016/j.breast.2004.03.004
19. Jayasinghe UW, Bilous AM, Boyages J (2007) Is survival from infiltrating lobular carcinoma of the breast different from that of infiltrating ductal carcinoma? *Breast J* 13:479–485. doi:10.1111/j.1524-4741.2007.00468.x
20. Pestalozzi BC, Zahrieh D, Mallon E et al (2008) Distinct clinical and prognostic features of infiltrating lobular carcinoma of the breast: combined results of 15 international breast cancer study group clinical trials. *J Clin Oncol*. doi:10.1200/JCO.2007.14.9336
21. Rakha EA, El-Sayed ME, Powe DG et al (2008) Invasive lobular carcinoma of the breast: response to hormonal therapy and outcomes. *Eur J Cancer* 44:73–83. doi:10.1016/j.ejca.2007.10.009
22. Sinha PS, Bendall S, Bates T (2000) Does routine grading of invasive lobular cancer of the breast have the same prognostic significance as for ductal cancers? *Eur J Surg Oncol* 26:733–737. doi:10.1053/ejso.2000.0994
23. Borst MJ, Ingold JA (1993) Metastatic patterns of invasive lobular versus invasive ductal carcinoma of the breast. *Surgery* 114:637–641
24. Orvieto E, Maiorano E, Bottiglieri L et al (2008) Clinico-pathological characteristics of invasive lobular carcinoma of the breast: results of an analysis of 530 cases from a single institution. *Cancer* (in press)
25. Lehr HA, Hansen DA, Kussick S et al (1999) Assessment of proliferative activity in breast cancer: MIB-1 immunohistochemistry versus mitotic figure count. *Hum Pathol* 30:1314–1320. doi:10.1016/S0046-8177(99)90062-X
26. Thor AD, Liu S, Moore DH et al (1999) Comparison of mitotic index, in vitro bromodeoxyuridine labeling, and MIB-1 assays to quantitate proliferation in breast cancer. *J Clin Oncol* 17:470–477