



HAL
open science

Doping of poly(3-hexylthiophene) nanofibers: microscopic morphology and electrical properties

S. Desbief, G. Derue, Ph. Leclère, S. Lenfant, D. Vuillaume, R. Lazzaroni

► To cite this version:

S. Desbief, G. Derue, Ph. Leclère, S. Lenfant, D. Vuillaume, et al.. Doping of poly(3-hexylthiophene) nanofibers: microscopic morphology and electrical properties. *European Physical Journal: Applied Physics*, 2009, 46 (1), pp.1-5. 10.1051/epjap/2009017 . hal-00480147

HAL Id: hal-00480147

<https://hal.science/hal-00480147v1>

Submitted on 3 May 2010

HAL is a multi-disciplinary open access archive for the deposit and dissemination of scientific research documents, whether they are published or not. The documents may come from teaching and research institutions in France or abroad, or from public or private research centers.

L'archive ouverte pluridisciplinaire **HAL**, est destinée au dépôt et à la diffusion de documents scientifiques de niveau recherche, publiés ou non, émanant des établissements d'enseignement et de recherche français ou étrangers, des laboratoires publics ou privés.

Doping of poly(3-hexylthiophene) nanofibers: microscopic morphology and electrical properties

**Simon Desbief^{1*}, Gwennaëlle Derue¹, Philippe Leclère¹, Stéphane Lenfant²,
Dominique Vuillaume², Roberto Lazzaroni¹**

¹ *Laboratory for Chemistry for Novel Materials, University of Mons Hainaut/Materia Nova, 20 Place du Parc, B-7000, Mons (Belgium)*

² *Molecular Nanostructures and Devices group, Institute for Electronics, Microelectronics and Nanotechnology (IEMN), CNRS, Avenue Poincaré, BP 60069, F-59652 cedex, Villeneuve d'Ascq (France)*

PACS: 82.35.Cd; 87.64.Dz; 81.07.Nb

Running title: Doping of P3HT nanofibers

*Corresponding author: Dr. Simon Desbief; tel + 32 65 37 38 68; fax: + 32 65 37 38 61; e-mail: sdesbief@averell.umh.ac.be

Abstract

The microstructure of thin deposits of poly(3-hexylthiophene) on silicon surfaces is investigated as a function of the solution concentration, the maturation time and the solvent nature, with the aim of generating one monolayer of P3HT nanofibers on the surface. These films are then exposed to a NOPF₆ solution, in order to oxidize the conjugated system and to produce conducting nanostructures. The effect of the chemical doping on the microscopic morphology and the electrical properties is analyzed on the basis of AFM and I-V measurements.

1. Introduction

Solution-processable semiconducting polymers are intensively studied for their potential for applications in organic electronic devices. In this context, poly(3-alkylthiophene)s, in particular poly(3-hexylthiophene) (P3HT, Figure 1 left), are drawing strong interest due to the ease of synthesis and processability and the high charge carrier mobility [1-10].

Since the charge transport properties in conjugated polymer thin films and the device performances are intimately related to the microscopic morphology arising from the long-range order [11], it is essential to control the supramolecular organization and particularly the chain orientation in thin film deposits. Such control can be exerted through the processes used for film deposition from solution. In appropriate conditions of sample preparation, P3HT chains can spontaneously self-assemble in nanofibers (Figure 1 center). It has been established that the fibers width and height correspond to the P3HT chain length

and width, respectively [12-16]. In these structures, P3HT chains are therefore π -stacked perpendicular to the fiber axis and edge-on with respect to the substrate (Figure 1 right). Such fibrillar structure in P3HT films leads to higher charge carrier mobility than in untextured P3HT films, suggesting that those nanofibers act as efficient paths for the charge carrier transport [12].

In this work we first determine the optimal preparation conditions for generating a well-defined fibrillar morphology in P3HT films, with the specific goal of obtaining one dense monolayer of nanofibers on the substrate. We then investigate the effect of chemical doping of P3HT on the morphology of the deposits and we characterize the electrical properties of films of doped nanofibers.

2. EXPERIMENTAL SECTION

2.1. Film preparation

Regio-regular P3HT from Aldrich is solubilized in ortho-xylene with a concentration ranging from 0.01 to 2.5 mg/mL, depending on the final thickness desired. The solution is stirred and heated up to 80°C for 20 minutes in order to totally solubilize the polymer, and then cooled down to room temperature before deposition. 10 to 20 μ L of solution are drop-cast on the substrate (usually silicon (111)) under a solvent saturated atmosphere, in order to slow down the solvent evaporation. This “solvent annealing” process is expected to bring the system towards the most stable configuration.

The doping process is carried out from a liquid phase: the substrate covered with the P3HT film is immersed in the dopant solution, which is composed of an oxidizing agent dissolved in a non-solvent of the polymer [17]. In this work, we chose to work with NOPF₆ 0.5 mg/mL in acetonitrile. The effectiveness of the doping process can be visualized by the color change of the polymer deposit (in the case of the thick films); typically the immersion time varies from a few seconds to one minute, depending on the film thickness. Finally, the sample is rinsed in pure acetonitrile in order to remove any dopant excess and dried in an air flow.

2.2. Morphological characterization

AFM measurements were performed using a *Multimode* microscope equipped with a *Nanoscope V* controller from *Veeco Instruments Inc.* All images were taken under ambient conditions, in Tapping AFM mode, with Si cantilevers with a resonance frequency in the 150-300 kHz range.

2.3. Electrical measurements

Current-voltage (I-V) curves were obtained in a glove-box filled with N₂ (with H₂O and O₂ levels below 1ppm), using a prober connected to an *Agilent 4155C* apparatus. The P3HT films were deposited on microfabricated patterns made of 8nm-thick platinum contacts with variable width (from 3 to 100 μ m) and gap (from 30 to 1000 nm), deposited on Si with a 1nm titanium layer, see Figure 2. These small values of the electrode separation ensure that the gap can be bridged by the nanofibers. The Si substrate surface is a 10 nm-thick SiO₂ layer for electrode isolation.

3. RESULTS AND DISCUSSION

3.1. Morphology

The choice of ortho-xylene as the solvent was motivated by the fact that it favors the formation of fibrillar aggregates, compared to chloroform, tetrahydrofuran, toluene or trifluorotoluene [18]. The formation of fibrils initially takes place in solution; then they most probably adsorb and grow on the substrate as the solvent evaporates. The key issue at this stage is to optimize the polymer solution concentration and the deposition procedure to obtain a given amount of nanofibers on the substrate surface. In particular, we aim at generating a dense monolayer of fibrils, in order to study the electrical properties of such well-defined system. We thus prepared solutions with concentrations ranging from 0.01 mg/mL to 2.5 mg/mL. At the lowest concentration, only a few isolated fibrils are present on the surface (data not shown). A concentration of 0.25 mg/mL leads to the formation of a close-packed single layer of fibrils covering almost all the surface (Figure 1 center). Further increasing the concentration of the P3HT solution only increases the thickness as well as the disorder within the film (with larger untextured aggregates also present). With a concentration of 2.5 mg/mL, the film thickness reaches one micrometer.

The P3HT chains self-assembly in ortho-xylene can also be illustrated by Figure 3, which shows 5x5 μm^2 AFM images of P3HT films deposited after different maturation times of the same solution (0.25 mg/mL). Using a freshly-made solution leads to a film composed of a uniform monolayer of close-packed fibrils with some isolated randomly-oriented fibrils above it (Figure 3A). After a maturation period of 24 and 48 hours, the amount of unorganized fibrils gradually increases (Figure 3B and C, respectively). This observation indicates that the fibrils formation begins in solution: the number of fibrils therefore increases with the maturation time [18].

3.2. Effect of doping on the morphology

NOPF_6 dissociates in acetonitrile into NO^+ and PF_6^- ions. The former is an oxidizing agent that removes electrons from the P3HT backbone [17]. This creates positive polarons which are compensated by PF_6^- counterions incorporating in the film (the reduced NO molecule simply leaves the system as a gas).

In order to characterize the effect of the doping process on the film morphology, we made compared AFM images before and after doping (Figure 4). Those images clearly show that the doping process does not lead to a change in morphology: the fibrillar structure is preserved while the reaction between P3HT and NOPF_6 occurs. This observation is very relevant since this particular morphology is very favorable for inter-chain charge transport, thanks to the π -stacking between the P3HT backbones.

The histogram at the bottom of Figure 4 shows the distribution of the fibril width measured on the AFM images. It clearly appears that the two distributions are not centered on the same average value: for the undoped system, the average width is 20.2 nm, which is consistent with the model of Figure 1 and the molecular weight, while for the doped fibrils, the average width is 24.1 nm. The exact location of the PF_6^- ions with respect to the polymer chains is not known; one can nevertheless hypothesize that they incorporate next to the conjugated backbones. This may lead to a lateral shift of the polymer chains with respect to each other, which in turn would induce some disordering and an overall broadening of the nanofibers.

3.3. Electrical characterization

The AFM image of Figure 2B clearly shows a web of nanofibers crossing the channels between the electrodes. The corresponding topographic profile indicates a variation of about 2-3 nm in the channel, consistent with the thickness of a single layer of P3HT fibrils. Figure 5 displays typical I-V curves recorded on those structures. The maximum current for the doped deposit is 100 times higher than for the undoped system (panel A), which clearly indicates that even a single monolayer of nanofibers is sufficiently continuous to become conducting upon doping. Since very few fibrils overlap or connect in those very thin deposits, these data most probably reflect the charge transport process along individual fibrils. When the P3HT deposit is thicker (for instance, 1 μm), the conductivity increases by nearly 6 orders of magnitude upon doping (Figure 5B), consistent with the expected behavior for conjugated polymers in the bulk. The much larger current recorded for the thick doped film, compared to the thin doped deposit, is certainly due to the presence of a lot more paths of conduction in the thick film, due to the presence of a thick web of nanofibers.

From the I-V curves recorded on electrode patterns with different lengths and gaps, we attempted to estimate the conductivity of the single layer deposits. For this purpose, we have considered that the conduction channel is made of a close-packed monolayer of fibrils (with a thickness of 2 nm). The results are displayed in Figure 5C, with the different curves corresponding to different electrode pattern geometries. The highest conductivities reach values of a few thousands S/m, close to the values obtained for bulk doped polythiophenes. This is a clear indication that the very thin deposits effectively conduct charges.

Finally, we have observed that the conductivity of the thick doped films significantly decreases with time when they are exposed to the ambient atmosphere. This effect, which may be due to water adsorption or to dedoping, is under investigation.

4. CONCLUSIONS

In this work, we have prepared thin P3HT deposits with the aim of favoring the formation of fibrillar morphologies, which are expected to be well suited for charge transport. We have determined the optimal preparation conditions to generate deposits consisting of a close-packed single layer of nanofibers. We have then carried out the chemical doping of those thin deposits from the liquid phase and we have observed that the doping process can preserve the fibrillar morphology. The width of the nanofibers slightly increases, most probably due to the incorporation of PF_6^- counterions in the vicinity of the polymer chains. The electrical characterization of the doped systems has shown that the single layer deposits can effectively conduct charges, with conductivities close to the bulk values for conducting polymers. In order to complement these first results, conducting-AFM measurements are in progress on both doped and undoped films in order to characterize the electrical properties of single nanofibers.

Acknowledgements

This work was supported by the Belgian Federal Science Policy Office (PAI 6/27) and the Belgian National Fund for Scientific Research (FRS-FNRS). G.D. is grateful to FRIA for a doctoral fellowship. Ph.L. is a Research Associate of FRS-FNRS.

References

- 1 C.D. Dimitrakopoulos, P.R.L. Malenfant, *Adv. Mater.* **14**, 99 (2002)
- 2 G. Horowitz, *J. Mater. Res.* **19**, 1946 (2004)
- 3 C.D. Dimitrakopoulos, D.J. Masacaro, *IBM J. Res. Dev.* **45**, 11 (2001)
- 4 W. Fix, A. Ullmann, J. Ficker, W. Clemens, *Appl. Phys. Lett.* **81**, 1735 (2002)
- 5 Z. Bao, A. Dodabalapur, A.J. Lovinger, *Appl. Phys. Lett.* **69**, 4108 (1996)
- 6 H. Sirringhaus, N. Tessler, R.H. Friend, *Science* **280**, 1741 (1998)
- 7 J. Liu, E.N. Kadnikova, Y. Liu, M.D. McGehee, J.M.J. Frechet, *J. Am. Chem. Soc.* **126**, 9486 (2004)
- 8 G. Wang, J. Swensen, D. Moses, A.J. Heeger, *J. Appl. Phys.* **93**, 6137 (2003)
- 9 G. Wang, D. Moses, A.J. Heeger, *J. Appl. Phys.* **95**, 316 (2004)
- 10 J.F. Chang., S. Baoquan, D.W. Breiby, M.M. Nielsen, T.I. Sölling, M. Giles, I. McCulloch, H. Sirringhaus, *Chem. Mater.* **16**, 4772 (2004)
- 11 H. Sirringhaus, P.J. Brown, R.H. Friend, M.M. Nielsen, K. Bechgaard, B.M.W. Langeveld-Voss, A.J.H. Spiering, R.A.J. Janssen, E.W. Meijer, P. Herwig, D.M. de Leeuw, *Nature* **401**, 685 (1999)
- 12 M. Surin, Ph. Leclère, R. Lazzaroni, J.D. Yuen, G. Wang, D. Moses, A.J. Heeger, S. Cho, K. Lee, *J. Appl. Phys.* **100**, 33712 (2006)

- 13 H. Yang, S. Park, D. Kim, S. Magonov, K. Cho, T. Chang, Z. Bao, C.R. Ryu, *Polym. Preprints* **44**, 333 (2003)
- 14 R.J. Kline, M.D. McGehee, *Adv. Mater.* **15**, 1519 (2003)
- 15 J.A. Merlo, C.D. Frisbie, *J. Phys. Chem. B* **108**, 19169 (2004)
- 16 R. Zhang, B. Li, M.C. Iovu, E.L.M. Jeffries, G. Sauve, J. Cooper, S. Jia, S. Tristram-Nagle, D.M. Smilgies, D.N. Lambeth, R.D. McCullough, J. Kowalewski, *J. Am. Chem. Soc.* **128**, 3450 (2006)
- 17 R. Lazzaroni, M. Lögdlund, S. Stafström, W.R. Salaneck, J.L. Brédas, *J. Chem. Phys.* **93**, 4433 (1990)
- 18 S. Berson, PhD.Thesis, University Joseph-Fourier Grenoble, 2007

Figure captions

Figure 1: Molecular structure of P3HT (left); $1 \times 1 \mu\text{m}^2$ AFM image of a thin deposit of P3HT showing a fibrillar morphology (center); model of the chain packing in the nanofibers (right).

Figure 2 : $10 \times 10 \mu\text{m}^2$ AFM images of a pattern for electrical measurements (width: $10 \mu\text{m}$; gap: 100 nm) before (left) and after (right) P3HT deposition.

Figure 3 : $5 \times 5 \mu\text{m}^2$ AFM images of films deposited after:

A: a few minutes, B: 24 hours and C: 48 hours of maturation time.

All films were deposited from the same solution of P3HT 0.25 mg/mL in ortho-xylene. The vertical color scale is 8 (A) and 16 (B,C) nm, respectively.

Figure 4 : $2 \times 2 \mu\text{m}^2$ AFM images of P3HT films:

A: undoped , B: doped with a 0.5 mg/mL NOPF_6 solution in acetonitrile.

C: Distribution of the nanofiber width for the undoped and doped systems.

Figure 5 : $I(V)$ curves measured for P3HT films deposited on $10 \mu\text{m}$ -long electrodes with a 50 nm gap.

A: for a single layer of nanofibers; B: for a $1 \mu\text{m}$ -thick deposit

C: Conductivity estimates for the single layer deposits; the different curves correspond to different electrode pattern geometries.

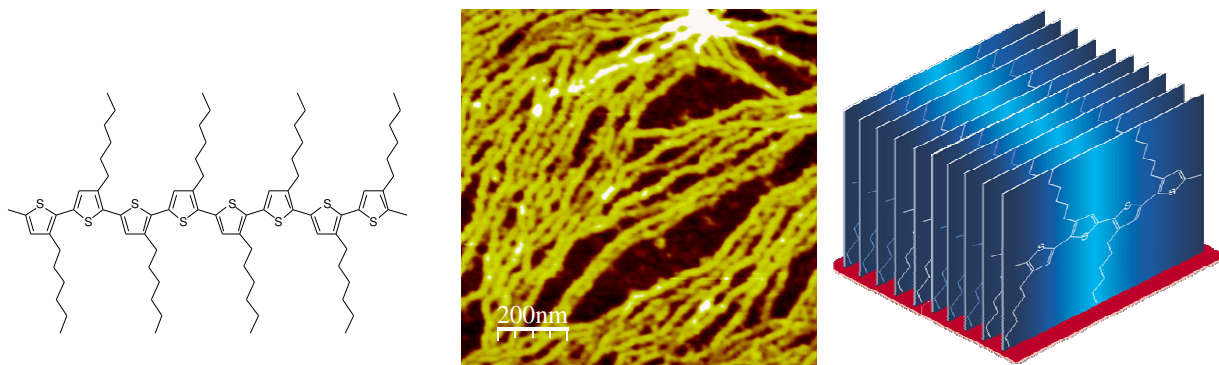


Figure 1: Molecular structure of P3HT (left); $1 \times 1 \mu\text{m}^2$ AFM image of a thin deposit of P3HT showing a fibrillar morphology (center); model of the chain packing in the nanofibers (right).

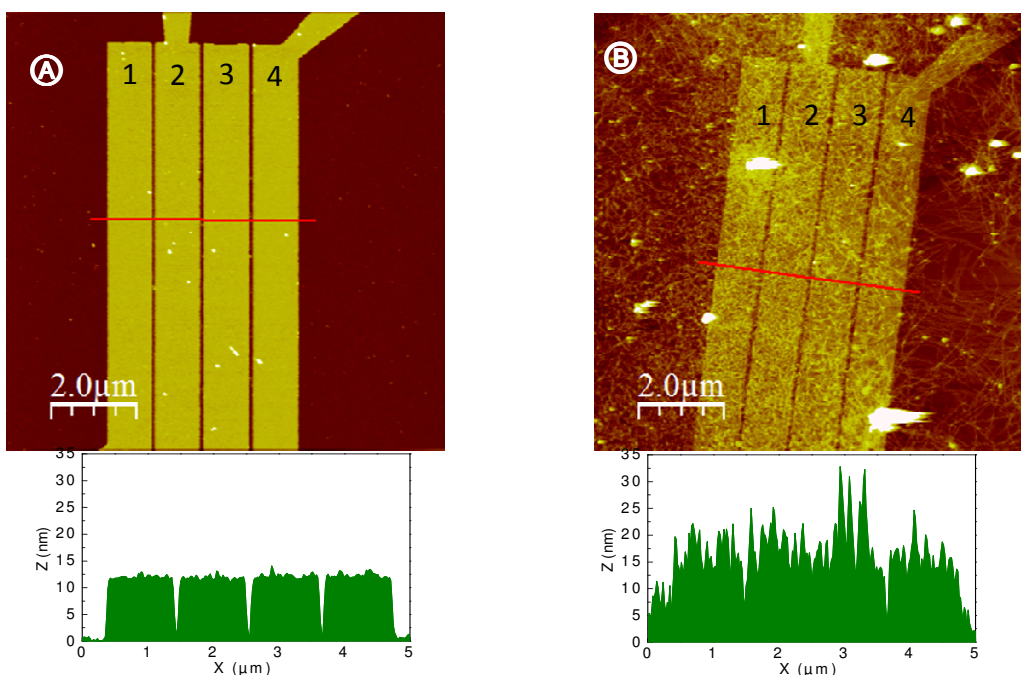


Figure 2 : $10 \times 10 \mu\text{m}^2$ AFM images of a pattern for electrical measurements (width: $10 \mu\text{m}$; gap: 100 nm) before (left) and after (right) P3HT deposition.

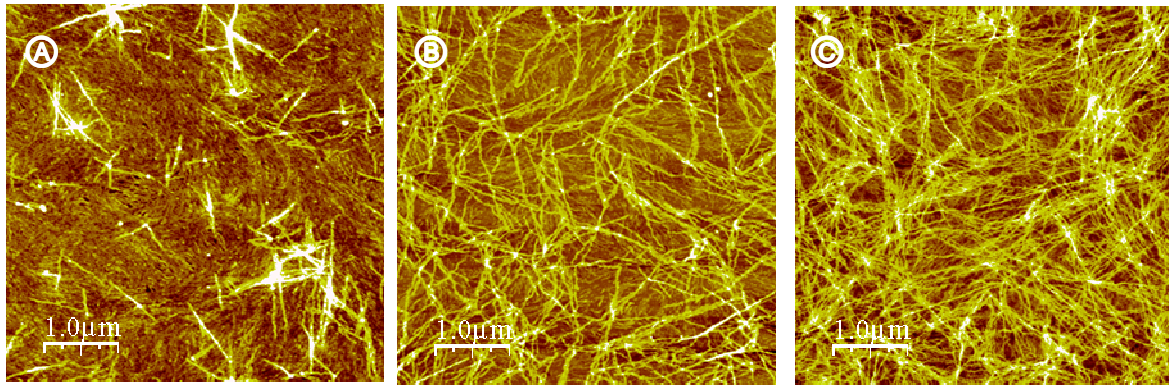


Figure 3 : $5 \times 5 \mu\text{m}^2$ AFM images of films deposited after
A: a few minutes, B: 24 hours and C: 48 hours of maturation time.
All films were deposited from the same solution of P3HT 0.25 mg/mL in ortho-xylene. The vertical color
scale is 8 (A) and 16 (B,C) nm, respectively.

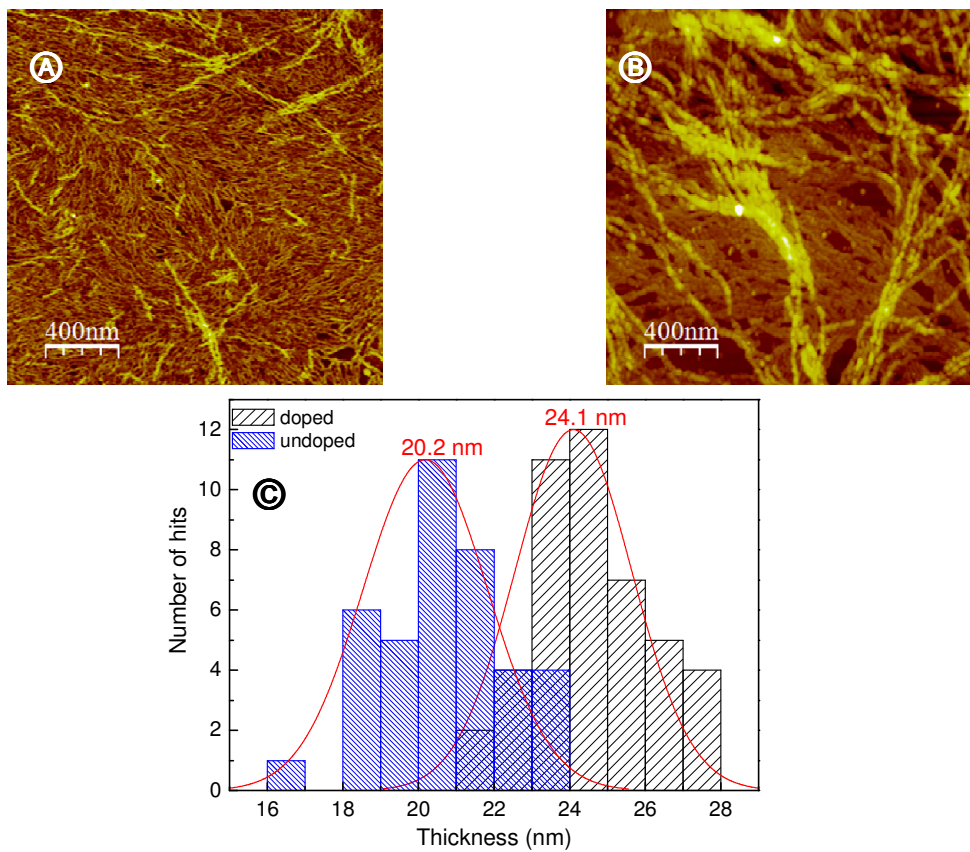


Figure 4 : $2 \times 2 \mu\text{m}^2$ AFM images of P3HT films
 A: undoped , B: doped with a 0.5 mg/mL NOPF₆ solution in acetonitrile.
 C: Distribution of the nanofiber width for the undoped and doped systems.

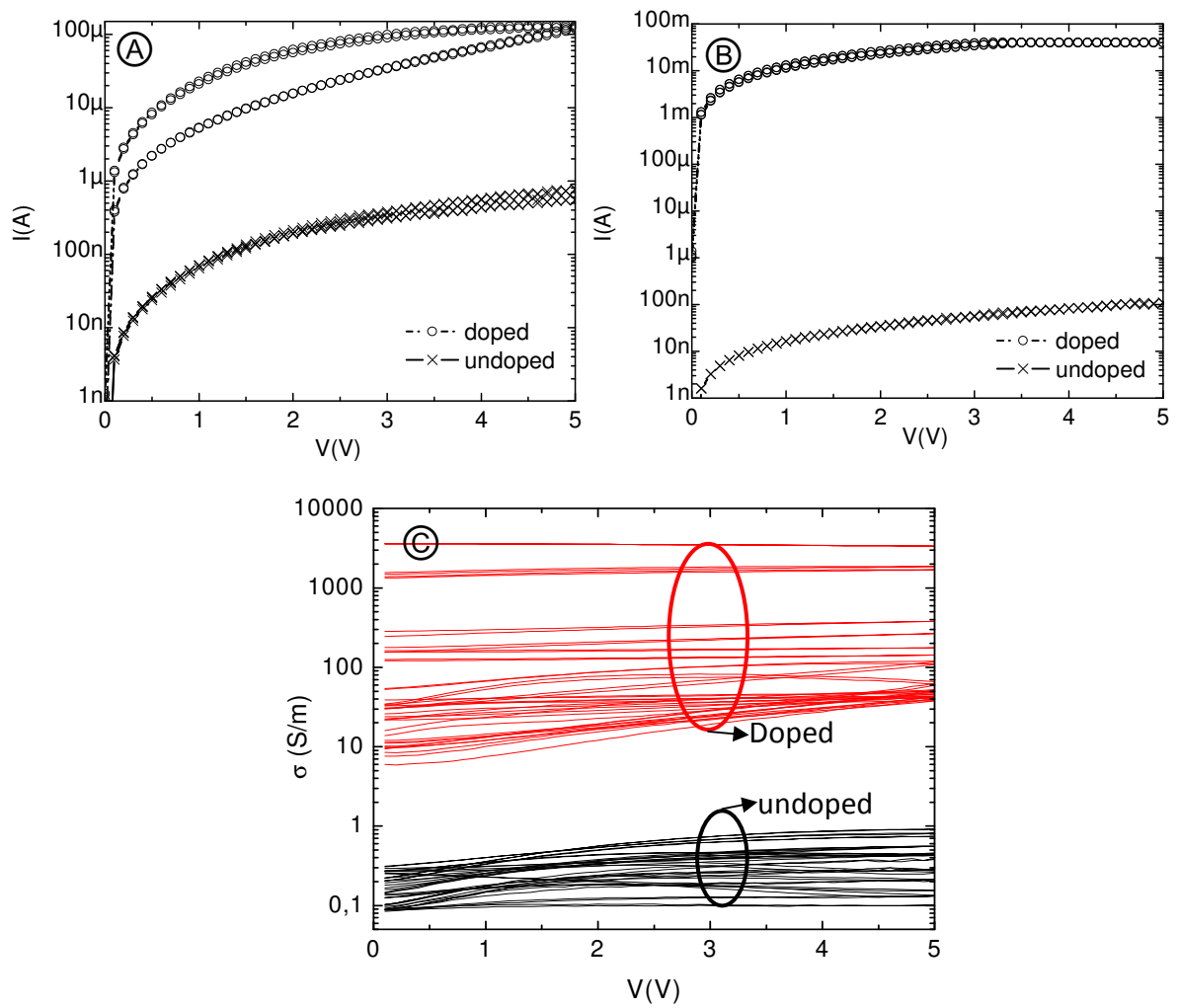


Figure 5 : $I(V)$ curves measured for P3HT films deposited on $10\mu\text{m}$ -long electrodes with a 50 nm gap.
 A: for a single layer of nanofibers B: for a $1\mu\text{m}$ -thick deposit
 C: Conductivity estimates for the single layer deposits; the different curves correspond to different electrode pattern geometries.