



HAL
open science

Etomoxir-induced partial CPT-I inhibition in vivo does not alter cardiac long-chain fatty acid uptake and oxidation rates

Joost J.F.P. Luiken, Hanneke E.C. Niessen, Susan L.M. Coort, Nicole Hoebbers, Will A. Coumans, Robert W. Schwenk, Arend Bonen, Jan F.C. Glatz

► **To cite this version:**

Joost J.F.P. Luiken, Hanneke E.C. Niessen, Susan L.M. Coort, Nicole Hoebbers, Will A. Coumans, et al.. Etomoxir-induced partial CPT-I inhibition in vivo does not alter cardiac long-chain fatty acid uptake and oxidation rates. *Biochemical Journal*, 2009, 419 (2), pp.447-455. 10.1042/BJ20082159 . hal-00479121

HAL Id: hal-00479121

<https://hal.science/hal-00479121>

Submitted on 30 Apr 2010

HAL is a multi-disciplinary open access archive for the deposit and dissemination of scientific research documents, whether they are published or not. The documents may come from teaching and research institutions in France or abroad, or from public or private research centers.

L'archive ouverte pluridisciplinaire **HAL**, est destinée au dépôt et à la diffusion de documents scientifiques de niveau recherche, publiés ou non, émanant des établissements d'enseignement et de recherche français ou étrangers, des laboratoires publics ou privés.

Etomoxir-induced partial CPT-I inhibition *in vivo* does not alter cardiac long-chain fatty acid uptake and oxidation rates

Joost J.F.P. Luiken*, Hanneke E.C. Niessen*, Susan L.M. Coort*, Nicole Hoebbers*, Will A. Coumans*, Robert W. Schwenk*, Arend Bonen[†], Jan F.C. Glatz

* Department of Molecular Genetics, Cardiovascular Research Institute Maastricht (CARIM), Maastricht University, Universiteitssingel 50, 6200 MD Maastricht, the Netherlands. [†] Department of Human Health and Nutritional Sciences, University of Guelph, 50 Stone Road East, Guelph, Ontario, N1G 2W1, Canada.

6,762 words

Address for correspondence:

Joost J.F.P. Luiken, PhD
Department of Molecular Genetics
Cardiovascular Research Institute Maastricht (CARIM)
Maastricht University, P.O. Box 616
NL-6200 MD Maastricht
Telephone: +31 - 43 - 388 1209
Telefax: +31 - 43 - 388 4574
E-mail: j.luiken@gen.unimaas.nl

Etomoxir and cardiac fatty acid utilization

Synopsis

Although carnitine palmitoyltransferase-I (CPT-I) is generally regarded to present a major rate-controlling site in mitochondrial β -oxidation, it is incompletely understood whether CPT-I is rate-limiting in the overall long-chain fatty acid (LCFA) flux in the heart. Another important site of regulation of the LCFA flux in the heart is trans-sarcolemmal LCFA transport facilitated by CD36 and FABPpm. Therefore, we explored to what extent a chronic pharmacological blockade of the LCFA flux at the level of mitochondrial entry of LCFA-CoA would affect sarcolemmal LCFA uptake. Rats were injected daily with saline or etomoxir, a specific CPT-I inhibitor, for 8 days at 20 mg/kg body mass. Etomoxir-treated rats displayed a 44% reduced cardiac CPT-I activity. Sarcolemmal contents of CD36 and FABPpm, as well as the LCFA transport capacity were not altered in hearts of etomoxir-treated versus control rats. Furthermore, rates of LCFA uptake and -oxidation and glucose uptake by cardiac myocytes from etomoxir-treated rats were not different from control rats, neither under basal nor under acutely induced maximal metabolic demands. Finally, hearts from etomoxir-treated rats did not display triacylglycerol accumulation. Therefore, CPT-I appears not to present a major rate-controlling site in total cardiac LCFA flux. Likely, sarcolemmal LCFA entry rather than mitochondrial LCFA-CoA entry is a promising target for normalizing LCFA flux in cardiac metabolic diseases.

Keywords

CD36, carnitine palmitoyltransferase-I, long-chain fatty acid uptake, long-chain fatty acid oxidation, mitochondria, sarcolemmal transport

Abbreviations

ACC, acetyl-CoA carboxylase; CPT-I, carnitine palmitoyltransferase-I; ECL, enhanced chemiluminescence; FABPc, cytoplasmic fatty acid-binding protein; FACS, fatty acyl-CoA synthetase; LCFA, long-chain fatty acids; liver carnitine palmitoyltransferase-I, L-CPT-I; muscle carnitine palmitoyltransferase-I, M-CPT-I; OXPHOS, oxidative phosphorylation.

Etomoxir and cardiac fatty acid utilization

Introduction

Long-chain fatty acids (LCFA) are the major energy source for the heart to sustain contractile activity. Since the heart can store or synthesize LCFA only in limited amounts, it strongly relies on a continuous LCFA supply from the circulation [1]. LCFA are taken up mainly via a protein-mediated mechanism, involving two sarcolemmal LCFA-binding proteins, i.e., FABPpm and CD36 [2]. Kinetic evidence suggests that FABPpm and CD36 operate in concert with each other, so as to make up two components of one functional LCFA transport system. Accordingly, both proteins were found to physically interact, based on co-immunoprecipitation experiments using cardiac sarcolemmal preparations [3]. Moreover, these proteins not only facilitate LCFA uptake, but they also regulate this process via their translocation from intracellular stores to the sarcolemma. Notably, an increase in contractile activity, which increases the metabolic demands of the heart, also causes the translocation of both FABPpm and CD36 to the cell surface to increase LCFA uptake [4].

Immediately after their trans-sarcolemmal transport, LCFA bind to cytoplasmic fatty acid-binding protein (FABPc), which channels them to mitochondria, where LCFA are activated by fatty acyl-CoA synthetase (FACS), located at the cytoplasmic side of the outer mitochondrial membrane [1, 5]. In the contracting heart, the bulk of LCFA-CoA esters is taken up into the mitochondria via carnitine palmitoyltransferase-I (CPT-I), and subsequently degraded in the β -oxidation pathway [1]. The portion of the LCFA-CoA esters that is not used for mitochondrial β -oxidation is mainly esterified into triacylglycerols for storage.

CPT-I is located within the mitochondrial outer membrane, and converts LCFA-CoA into LCFA-carnitine. This enzyme exists in two isoforms, a liver (L) variant and a muscle (M) variant [6]. Both isoforms are expressed in cardiac myocytes, but M-CPT-I is the predominant isoform, and contributes to 98% of total cardiac CPT-I activity [7]. CPT-I provides a major site of acute regulation of β -oxidation via its physiological inhibitor malonyl-CoA, and its enzymatic activity towards LCFA-CoA is generally proposed to be the overall rate-limiting step in long-term cellular LCFA utilization [6].

However, indirect observations based on measurements of intracellular malonyl-CoA levels have questioned the role of CPT-I in the regulation of mitochondrial β -oxidation [5]. Notably, the concentration of malonyl-CoA in the heart was estimated to be 1-10 μ M [8, 9], which greatly exceeds the IC_{50} of M-CPT-I for malonyl-CoA (0.02 μ M, [5]). Hence, β -oxidation would be theoretically permanently blocked if CPT-I would be rate-limiting for β -oxidation. More recently, it was observed in perfused hearts from *db/db* mice that LCFA oxidation was 4-fold increased, independent of changes in CPT-I activity [10]. These observations suggest that CPT-I activity may not be rate-limiting for cardiac β -oxidation.

Another site regulating LCFA oxidation appears to be at the level of the sarcolemma, where LCFA uptake into cardiac myocytes is mediated by the FABPpm-CD36 transport system [2, 4]. Namely, CD36-mediated LCFA uptake is closely coordinated with subsequent metabolism. This is illustrated by the observation that during the initial LCFA uptake phase, which is considered to be independent of metabolism, the bulk of LCFA is rapidly metabolized [11]. Furthermore, in CD36-null mice, in which CPT-I protein expression is not altered, LCFA oxidation is impaired, particularly during a metabolic challenge [12]. Finally, in *db/db* mice markedly increased rates of cardiac LCFA oxidation were solely attributable to an elevated content of sarcolemmal CD36, while CPT-I activity was unaltered [10].

Taken together, a number of observations in recent years have raised the question whether cardiac LCFA fluxes are only regulated by CPT-I or predominantly by CPT-I in combination with other regulatory mechanisms. Therefore, we sought to partially block CPT-I in the heart by the chronic administration of etomoxir to rats, as has been done previously [13-16]. Thereafter, we measured cardiac triacylglycerol content, LCFA transport and transporters in giant sarcolemmal vesicles and, finally, LCFA uptake and oxidation by cardiac

Etomoxir and cardiac fatty acid utilization

myocytes. We find that in etomoxir-treated rats, despite a marked reduction (~50%) in CPT-I activity, the FABPpm-CD36-mediated LCFA uptake is not altered, and LCFA oxidation rates are maintained during both basal and maximal metabolic demands. Therefore, we conclude that under these circumstances CPT-I does not appear to be rate-limiting in regulating cardiac LCFA fluxes.

Accepted Manuscript

THIS IS NOT THE VERSION OF RECORD - see doi:10.1042/BJ20082159

Etomoxir and cardiac fatty acid utilization

Experimental*Materials*

[1-¹⁴C]palmitic acid and [³H]glucose were obtained from Amersham Life Science Ltd., Little Chalfont, U.K. Bovine serum albumin (BSA) (fraction V), collagenase type VII and oligomycin were purchased from Sigma, Saint Louis, Missouri. Collagenase type II was from Worthington (Freehold, USA). Non-fat dry milk (Marvel) was obtained from Premier Brands, Moreton, UK. Western blot reagents were from Bio-Rad Laboratories (Hercules, USA) and the enhanced chemiluminescence (ECL) kit was from Amersham Pharmacia Biotech (Buckingham, UK). CD36 was detected with a monoclonal antibody (MO25) directed against human CD36, kindly provided by Dr. N. Tandon, Otsuka Pharmaceuticals, Bethesda, USA. A rabbit polyclonal antibody against rat hepatic membrane fatty acid binding protein was used to detect FABPpm (gift from Dr. D. Sorrentino, Mount Sinai Medical Center, New York City, USA). M-CPT-1 antibodies were a gift from Dr. G. Woldegiorgis (Oregon Graduate Institute of Science and Technology, Beaverton, USA). An antibody directed against Ser79-phosphorylated acetyl-CoA carboxylase (ACC) was from Upstate (Dundee, UK). Mitochondrial OXPHOS complexes were detected using a monoclonal antibody kit from MitoSciences (Eugene, USA). Rabbit anti-mouse immunoglobulin horseradish peroxidase and pork anti-rabbit immunoglobulin horseradish peroxidase were obtained from DAKO (Glostrup, Denmark). Etomoxir was purchased from Dr. H.P.O. Wolf (Projekt Entwicklung GmbH, Allensbach, Germany).

Animals

Male Lewis rats, weighing 150-200 g were used in this study. Animals were kept on a 12:12-h light-dark cycle and fed a Purina Chow diet and water *ad libitum*. The rats were divided into two groups: (1) control, and (2) etomoxir. Etomoxir (20 mg/kg body weight) was dissolved in 0.9% (w/v) NaCl and administered intraperitoneally for 8 days. Control rats received saline. The last injection was given 24 hours before the experiment. Ethical approval for all experimental procedures was obtained from the Experimental Animal Committee of the Maastricht University, and the study conforms to the Guide for the Care and Use of Laboratory Animals published by the US National Institutes of Health (NIH Publication No. 85-23, revised 1996). Animals were anesthetized with an intraperitoneal injection of a nembutal and heparin (3:1) mixture. Subsequently, the heart was removed for LCFA uptake studies and for analyses of transporter protein contents.

Isolation of giant sarcolemmal vesicles for determination of palmitate transport and transporters

Giant vesicles were prepared from heart muscle, as previously described [2]. These vesicles are solely derived from plasma membrane, and are virtually uncontaminated with intracellular membranes. LCFA do not merely loosely associate with giant vesicles, but are taken up across the vesicle membrane. Within the lumen of the vesicles FABPc is abundantly present, to act as an LCFA sink [2]. These giant vesicles were used for the assessment of the sarcolemmal content of LCFA transporters (see subsection Western blotting). These vesicles were also used for the measurement of the cardiac LCFA uptake capacity, as previously described [2].

Isolation of cardiac myocytes

Cardiac myocytes were isolated from control- or etomoxir-treated rats using a Langendorff perfusion system and a Krebs-Henseleit bicarbonate buffer equilibrated with 95% (v/v) O₂ and 5% (v/v) CO₂ (*medium A*) at 37°C as previously described [11]. Cells were

Etomoxir and cardiac fatty acid utilization

only used for subsequent tracer uptake studies when >80% of the cells had a rod-shaped appearance.

Palmitate utilization by cardiac myocytes

Cells (2.0 ml; 8–12 mg wet mass/ml) were preincubated in 20-ml vials in the absence or presence of 30 μ M oligomycin for 15 min at 37°C under continuous shaking. At the start of the incubations, a mixture of [1- 14 C]palmitate/BSA complex and [1- 3 H]deoxyglucose was added to cell suspensions (final concentrations: 100 μ M or 600 μ M palmitate with corresponding palmitate/BSA ratios of 0.33 or 2.0, respectively; 100 μ mol/l deoxyglucose;), as previously described. Uptake of 14 C-palmitate and 3 H-deoxyglucose (3-min) was determined by scintillation counting. Oxidation of 14 C-palmitate (20-min incubation) into CO₂ via base trapping was determined after addition of perchloric acid (0.5 M) to cell suspensions [11].

Oxygen consumption by cardiac myocytes

Incubations for measurement of oxygen consumption were performed in a specially designed vial with a total volume of 7 ml. Because a gas phase disturbs oxygen consumption measurements, the incubation vial was completely filled with cell suspension (5–8 mg wet mass/ml) which was saturated with 95% (v/v) O₂ and 5% (v/v) CO₂ immediately before capping the vial. Under continuous shaking at 37°C, oxygen consumption was measured with a Clark-type electrode. Hence, measurements started with a pO₂ between 500 and 600 mm Hg. Furthermore, measurements were corrected for loss of oxygen due to consumption by the Clarke electrode and to diffusion.

Sample preparation for Western blotting and CPT-I activity measurement

Total tissue homogenates to be used for Western blotting and for CPT-I activity measurement, were prepared from heart and, for reference, from liver. Briefly, tissues (ca. 50 mg) were homogenized in 1 ml of TES-buffer (10 mM Tris-HCL, 2 mM di-Na-EDTA, 250 mM sucrose, pH 7.4) supplemented with PMSF-DMSO for 5 interrupted 5-s bursts with an Ultra Turrax homogenizer (IKA, Staufen, Germany) set at 24,000 rpm. Thereafter, cells were disintegrated in 4 cycles (5-s on, 15-s off) with an amplitude of 10-12 using an Ultrasonic Disintegrater (Soniprep 150, Sanyo Gallenkamp Plc.). Protein concentration was determined and samples were stored at -80 °C.

PAGE and Western Blotting

Total tissue homogenates (20 μ g) and giant vesicle preparations (3 μ g), respectively, were separated by PAGE on 12.5% (w/v) acrylamid gels at 150 V and room temperature. Subsequently, proteins were transferred on nitrocellulose membranes by Western blotting and detected against CD36, FABPpm, ACC, CPT-I and OXPHOS complexes. Western blotting for the detection of CD36, FABPpm [2] and CPT-I [17] was performed as described earlier, and for the detection of OXPHOS complexes according to the manufacturer's instruction. The protein bands were visualized using enhanced chemiluminescence, and immunoblot intensities were analyzed by using densitometry using Quantity One software (Bio-Rad Laboratories, Hercules, USA).

Assay of CPT-I activity

CPT-I activity was assayed in total tissue homogenates by the CPT-forward measurement. In this assay, palmitoylcarnitine formation from palmitoyl-CoA and an ATP-regenerating system was determined as previously described [18].

Etomoxir and cardiac fatty acid utilization

Assay of intracellular triacylglycerol content

Upon thawing, pieces of heart and liver tissue (20 mg wet mass) from control and etomoxir-treated rats were subjected to lipid extraction and thin-layer chromatography, after which TLC plates were sprayed with a mixture of rhodamine B-6G and fluorescein in methanol for UV detection using a Fluor-S-MultiImager (Bio-Rad Laboratories, Hercules, USA). These methods are detailed in Hasselbainck et al [19]. Spots were quantified using Quantity-One software (Bio-Rad Laboratories, Hercules, USA).

Other procedures

Blood glucose was determined by use of a Euroflash® pocketscan blood glucose meter (Lifescan, Milpitas, USA). Cellular wet mass was obtained from cell samples taken during the incubation period and determined after centrifugation for 2-3 s at maximal speed in a microcentrifuge and subsequent removal of the supernatant. Protein was quantified with the Bicinchoninic acid protein assay (Pierce, Rockford, USA) according to manufacturer's instructions.

Statistics

All data are reported as mean \pm SEM. Statistical difference between groups was tested with a Student's *t*-test, or the Mann-Whitney U test for not normally distributed data. P values equal to or less than 0.05 were considered significant.

Accepted Manuscript

Etomoxir and cardiac fatty acid utilization

Results*Characteristics of etomoxir-treated rats*

The treatment of Lewis rats for 8 d with 20 mg/kg etomoxir did not alter blood glucose, which is in line with comparable etomoxir-feeding studies [13, 15, 16]. Similarly, etomoxir feeding did not affect general growth characteristics such as gain in body mass nor did it affect hindlimb muscle mass (Table 1). However, heart mass and liver mass each were significantly increased by 11% in etomoxir-treated rats. Such cardiac and hepatic hypertrophy has previously been described in other etomoxir-feeding studies (e.g., see [13, 14, 20]), and provides confirmation that the present etomoxir-treatment was effective.

Effects of etomoxir on cardiac and hepatic CPT-I activity/expression and triacylglycerol contents

As expected, chronic administration of etomoxir induced decreases in CPT-I activity in heart (-44%) and liver (-56%; Fig. 1A). Remarkably, the expression of the M-CPT-I protein in the heart was increased by 1.7-fold (Fig. 2A), which could possibly reflect a compensatory mechanism. In contrast, expression levels of the OXPHOS complexes I, II and V were not different between hearts of control and etomoxir-treated rats, indicating that the etomoxir-induced upregulation of CPT-I expression was not accompanied by an overall increase in mitochondrial protein content (Fig. 2B).

Administration of etomoxir to rodents is known to have marked effects on body lipid stores (e.g., see [14, 20]). With respect to cardiac lipid pools, we examined only the intramyocellular triacylglycerol content, because this is the major intracellular depot of LCFA [11]. The intramyocellular triacylglycerol content was not altered in etomoxir-treated rats (Fig. 1B). In contrast, in liver there was a 2.1-fold increase in triacylglycerol content (Fig. 1B).

Effects of etomoxir on cardiac LCFA transport and transporters

The protein expressions of both FABPpm and CD36 were not altered by etomoxir-treatment (Fig. 3B). Since it is not the total tissue expression of these transporters that determines the rate of LCFA uptake but rather their localization at the cell surface, giant sarcolemmal vesicles were prepared from cardiac tissue to study the presence of these transporters at the sarcolemma. In earlier studies we have shown that these giant vesicles are purely derived from myocytic sarcolemma [2]. In agreement, the muscle-specific caveolin isoform, caveolin-3, was found to be enriched in giant vesicles compared to total tissue homogenates, whereas CPT-I was not detectable indicating that there is no contamination of mitochondria (Fig. 3A), and also not of other subcellular organelles [21]. In line with their total tissue expression, sarcolemmal localizations of both FABPpm and CD36 were not altered (Fig. 3C).

The giant vesicles also are suitable for determining the uptake capacity of LCFA across the sarcolemma into the heart, because (i) in these vesicles all transporters are fixed at the vesicle surface (due to absence of transporter recycling processes between vesicle lumen compartments and the surface), and (ii) LCFA transport rates are measured independently from their metabolism [2]. The LCFA uptake capacity into cardiac-derived giant sarcolemmal vesicles was not altered by the etomoxir treatment (Fig. 3D). Thus, despite the chronic inhibition of CPT-I in etomoxir-treated hearts, there were no concurrent changes in sarcolemmal LCFA transport capacity, nor in the expression and the subcellular localization of LCFA transporters.

Etomoxir and cardiac fatty acid utilization

Effects of etomoxir on the dynamics of LCFA uptake and oxidation by cardiac myocytes

Cardiac myocytes were chosen as the preferential model to measure cardiac LCFA fluxes because the extracellular environment can be fully controlled while both vascular factors and the endothelial barrier are eliminated. Furthermore, the large extracellular space in incubations of cardiac myocytes allows the exogenous LCFA concentration to remain constant during the initial uptake period, which avoids complicated calculations and assumptions in case of the limited vascular space in the perfused working heart, where the substrate becomes rapidly depleted. However, compared to working hearts, metabolic rates of non-contracting myocytes are lower. Thus, basal oxygen consumption amounted to $20.5 \pm 2.2 \mu\text{l O}_2/(\text{g wet mass} \cdot \text{min})$ ($n=3$), in agreement with measurements of others [22]. This is 10–15% of the oxygen consumption by the working rat heart (e.g., see ref. [23]). For stimulation of metabolic rates of cardiac myocytes, we applied the mitochondrial inhibitor oligomycin. Oligomycin, at an optimal concentration of $30 \mu\text{M}$, effectively blocks the F_1F_0 -type proton pump while not affecting the electron transfer chain [4, 24]. Oxygen consumption by oligomycin-treated cardiac myocytes amounted to $146.6 \pm 10.6 \mu\text{l O}_2/(\text{g wet mass} \cdot \text{min})$ ($n=3$), which is 7.2-fold higher than by their non-stimulated counterparts, and closely resembles the oxygen consumption of the working heart of about $180 \pm 50 \mu\text{l O}_2/(\text{g wet mass} \cdot \text{min})$. Oligomycin-treatment also results in increased intracellular AMP/ATP levels, and consequently, activation of AMP-activated protein kinase (AMPK). On its turn, AMPK phosphorylates ACC at Ser79, resulting in an inhibition of its enzymatic activity and a subsequent reduction in intracellular malonyl-CoA levels. In cardiac myocytes from both control and etomoxir-treated rats, oligomycin treatment resulted in a similar (>5 -fold in both cases) increase in ACC-Ser79 phosphorylation (Fig. 4), indicating that chronic exposure of rats to etomoxir did not affect upstream events regulating CPT-I activity, most notably acute modulation of malonyl-CoA levels by ACC.

We have studied the effects of oligomycin on LCFA uptake at externally added palmitate concentrations of 100 and 600 μM , reflecting low and high physiological concentrations of this substrate as occurring in the cardiac interstitial space [2]. Similarly to our observations in giant vesicles, basal LCFA uptake was not significantly altered in cardiac myocytes from etomoxir-treated rats, either at 100 or 600 μM palmitate (Figs. 5A and 5B). At both palmitate concentrations, addition of 30 μM oligomycin increased LCFA uptake into cardiac myocytes from control- and etomoxir-treated rats by $\sim 1,4$ -fold (Figs. 5A and 5B).

Likewise, the basal LCFA oxidation rates did not differ between cardiac myocytes from control- and etomoxir-treated rats (Figs. 5C and 5D). In the presence of oligomycin, palmitate oxidation was similarly stimulated to the same extent ($\sim 6,8$ -fold) in cardiac myocytes from control and etomoxir-treated rats (Figs. 5C and 5D).

Basal glucose uptake into cardiac myocytes was similar between control and etomoxir-treated rats incubated with 100 μM palmitate (Fig. 5E). At 600 μM palmitate, basal glucose uptake into cardiac myocytes from both rat groups was 5-fold lower (Fig. 5F), which is likely due to LCFA-induced inhibition of glucose metabolism according to the principles of the Randle cycle [25]. Oligomycin treatment similarly enhanced glucose uptake by 3.8-fold into cardiac myocytes from control and etomoxir-treated rats incubated with 100 μM palmitate (Fig. 5E), and by 17-fold when incubated with 600 μM palmitate (Fig. 5F).

Etomoxir and cardiac fatty acid utilization

Discussion

The primary purpose of this study was to assess the role of CPT-I in the control of cardiac LCFA fluxes. In etomoxir-treated rats, a chronic reduction of cardiac CPT-I activity by 44% did not adversely alter (i) cardiac CD36 and FABPpm expression and sarcolemmal localization, (ii) cardiac sarcolemmal LCFA transport capacity and (iii) cardiac triacylglycerol deposition. The partial CPT-I reduction also did not affect (iv) LCFA uptake rates, (v) LCFA oxidation rates, and (vi) glucose uptake rates into cardiac myocytes both under basal and under acutely induced maximal metabolic demands in combination with either physiologically low or high LCFA supply. Collectively, these data indicate that reducing CPT-I activity does not impair any aspect of LCFA- and glucose metabolism in the heart.

A partial reduction in CPT-I activity is not rate-limiting for cardiac LCFA utilization

Etomoxir is a commonly used irreversible inhibitor of CPT-I, which results in blocking the entry of long-chain fatty acyl-moieties into mitochondria, and a subsequent reduction in the rate of β -oxidation. Etomoxir is an effective CPT-I inhibitor in the heart, since its addition in micromolar concentrations to cardiac myocytes *in vitro* inhibited LCFA oxidation by >95% [11]. In the present study *in vivo*, using a daily dose of 20 mg/kg body mass, CPT-I activity was partially blocked, i.e., by 44%. However, expression of M-CPT-I, the major cardiac isoform, was increased by 1.7-fold. This compensatory upregulation presumably prevented a more dramatic reduction in total CPT-I activity, with more severe consequences for body lipid homeostasis.

CPT-I has long been considered the key regulatory enzyme involved in mitochondrial uptake of LCFA [1, 6]. However, its role in the control of the cardiac LCFA fluxes is incompletely understood [26]. In the theoretical case that CPT-I would be a major control site of cardiac LCFA fluxes, it would likely exert a feedback inhibition on the sarcolemmal LCFA uptake process to prevent an intracellular accumulation of toxic LCFA metabolites. This feedback inhibition of sarcolemmal LCFA uptake might include a possible repression of CD36 and FABPpm and/or an internalization of these LCFA transporters. According to the flux control theory [5, 27] a ~40-50% inhibition in CPT-I would theoretically result in at least a partial inhibition of cellular LCFA uptake. However, despite marked reductions in CPT-I activity, there were no adverse effects on the expression and subcellular localization of LCFA transporters, nor on the sarcolemmal LCFA transport capacity or cellular LCFA uptake rates under basal and maximal metabolic demands.

Notwithstanding that CPT-I reduction does not have any impact on sarcolemmal LCFA transport and transporters, a more restricted control on mitochondrial β -oxidation would be expected [1, 6]. Again, a ~50% reduction of CPT-I activity would be expected to result in a ~50% reduction of mitochondrial β -oxidation, according to the flux-control theory of rate-limiting enzymes [27]. However, chronic reduction of CPT-I by 44% was without any effect on LCFA oxidation, even under maximal substrate supply. Moreover, powerful stimulation of LCFA oxidation by short-term (15 min) oligomycin-induced AMPK activation and subsequent ACC inhibition was not affected by the etomoxir treatment. Hence, the 56% residual CPT-I levels are sufficient to allow maximal (acute) upregulation of LCFA oxidation. These findings by themselves do contra-indicate the view that CPT-I is rate-limiting in mitochondrial β -oxidation. Importantly, this conclusion is in agreement with earlier more indirect observations concerning the marked upregulation of mitochondrial β -oxidation in hearts from *db/db* mice in the absence of changes in CPT-I expression [10], and provides an explanation for the paradoxical observation that the estimated intramyocellular malonyl-CoA concentration exceeds the IC_{50} of M-CPT-I for malonyl-CoA by >50-fold (see Introduction) [5, 8, 9].

Etomoxir and cardiac fatty acid utilization

Furthermore, etomoxir treatment had no effect on the intramyocellular triacylglycerol concentration, and therefore the ~50% CPT-I activity reduction does not result in a compensatory increase in triacylglycerol esterification of LCFA taken up into cardiac myocytes. Finally, etomoxir treatment does not affect glucose uptake, which would have been expected to increase in a secondary response to a hypothetical reduction of β -oxidation according to the principles of the Randle cycle [25]. Taken together, a ~50% reduction in CPT-I failed to reduce any aspect of cardiac LCFA utilization, pointing towards a more permissive, rather than a regulatory, role for CPT-I in mediating cardiac LCFA fluxes.

Importantly, this conclusion on the lack of flux control exerted by CPT-I in the heart may be tissue-specific. In other tissues, CPT-I might still be important in the control of mitochondrial β -oxidation. An example would be the liver, where L-CPT-I is the predominant isoform, which is far less sensitive than M-CPT-I to inhibition by malonyl-CoA [5]. In the present study, we observed a 56% reduction in hepatic CPT-I activity with the etomoxir treatment. However, in contrast to the heart, in which triacylglycerols did not accumulate, the liver exhibited a 2.1-fold increase in triacylglycerol content, indicating that modulation of CPT-I activity has an impact on hepatic LCFA metabolism.

Etomoxir-induced cardiac hypertrophy is not caused by changes in cardiac LCFA utilization

Chronic etomoxir-treatment of rats has been frequently used as a rodent model to study the molecular mechanisms underlying the development of cardiac hypertrophy. Indeed, in the present study etomoxir treatment caused an 11% increase in heart mass. Etomoxir-induced cardiac hypertrophy was accompanied by an elevated expression of myosin isoform V₁, sarcoplasmic reticulum Ca²⁺-ATPase [13, 28] and Na⁺-K⁺-ATPase [29]. The mechanism by which etomoxir induces the expression of myosin isoform V₁ and sarcoplasmic reticulum Ca²⁺-ATPase is incompletely understood but is likely connected with inhibition of CPT-1 and the resulting chronic metabolic shift from LCFA oxidation to glucose utilization [30]. Hence, the metabolic switch induced by CPT-1 blockade is considered a key signal for this type for cardiac remodeling. Therefore, transcription factors sensitive to changes in LCFA or LCFA metabolites are considered as likely candidates in the switch in genetic programming [31]. However, the present study in which etomoxir-induced CPT-I inhibition did not alter cardiac LCFA utilization suggests that the switch in gene expression might not be due to LCFA- (or LCFA metabolite-) induced transcription factors. Indeed, PPAR α expression and PPAR α target genes were not increased in chronic etomoxir treatment of mice [16]. Interestingly, it has been reported that etomoxir (or its metabolite etomoxiryl-CoA) activates other transcription factors via LCFA-independent mechanisms. In this respect, etomoxir-induced downregulation of peroxisomal acyl-CoA oxidase appeared to cause oxidative stress and, hence, NF- κ B activation [16].

Implications for treatment of cardiac metabolic diseases

There is emerging evidence that cardiac diseases are, at least partially, caused by alterations in cardiac energy substrate metabolism. For instance, the insulin resistant/type-2 diabetic heart shows increased LCFA uptake and oxidation, which is accompanied by diastolic malfunctioning [32-34]. Therefore, therapeutic manipulations to reduce the cardiac LCFA flux should be beneficial for the diseased heart and restore cardiac function [3, 35, 36]. Moreover, because heart failure decreases the energy reserve of the heart and LCFA oxidation is less efficient in terms of oxygen consumption than glucose oxidation [35, 36], this would provide another reason why reduction of LCFA fluxes might improve cardiac contractile parameters. The most efficient target for such therapy is the rate-limiting step in cardiac LCFA utilization. Based on the present data, it appears that CPT-I does not represent the predominant control site. Instead, there is growing evidence that cardiac LCFA fluxes are regulated at the level of the LCFA transport system consisting of FABPpm and CD36, i.e., via

Etomoxir and cardiac fatty acid utilization

altered distribution of these transporters between intracellular membrane compartments (endosomes) and the sarcolemma [3]. Also other LCFA transporters have been proposed to function in mammalian tissues, such as members of the FATP family, caveolin-1 and a putative adipocyte membrane protein pump [37], but the expression of the former two proteins is restricted to adipocytes [21, 37], and FATPs have been shown not to play a major role in bulk LCFA uptake into the heart [2, 38]. In this light, agents reducing the flux through FABPpm and CD36, rather than CPT-I inhibitors, would seem to be the preferable therapeutic agents for the treatment of cardiac disease.

Acknowledgements

The authors would like to thank Mr. J. Willems for excellent technical assistance. Further, we thank Dr Tandon (Otsuka Pharmaceuticals, Bethesda, MD, USA) for providing the antibodies against FAT/CD36, Dr Sorrentino (Mount Sinai Medical Center, New York City, USA) for providing the antibodies against FABPpm and Dr Woldegiorgis (Oregon Graduate Institute of Science and Technology, Beaverton, USA) for providing the antibodies against M-CPT-I.

Funding

This study was supported by the Netherlands Organisation for Health Research and Development (ZonMw grant nr. 912-04-075), the European Community (Integrated Project LSHM-CT-2004-005272, Exgenesis), the Natural Sciences and Engineering Research Council of Canada, and the Heart and Stroke Foundation of Ontario. Joost J.F.P. Luiken is the recipient of a VIDI-innovational research grant from the Netherlands Organization for Scientific Research (nr: 016.036.305). Arend Bonen is the Canada Research Chair in Metabolism and Health. Jan F.C. Glatz is Netherlands Heart Foundation professor of cardiac metabolism.

Accepted Manuscript

Etomoxir and cardiac fatty acid utilization

References

- 1 Stanley, W. C., Recchia, F. A. and Lopaschuk, G. D. (2005) Myocardial substrate metabolism in the normal and failing heart. *Physiol. Rev.* **85**, 1093-1129
- 2 Luiken, J. J., Turcotte, L. P. and Bonen, A. (1999) Protein-mediated palmitate uptake and expression of fatty acid transport proteins in heart giant vesicles. *J. Lipid. Res.* **40**, 1007-1016
- 3 Glatz, J. F., Bonen, A., Ouwens, D. M. and Luiken, J. J. (2006) Regulation of sarcolemmal transport of substrates in the healthy and diseased heart. *Cardiovasc. Drugs Ther.* **20**, 471-476
- 4 Luiken, J. J., Coort, S. L., Koonen, D. P., van der Horst, D. J., Bonen, A., Zorzano, A. and Glatz, J. F. (2004) Regulation of cardiac long-chain fatty acid and glucose uptake by translocation of substrate transporters. *Pflügers Arch.* **448**, 1-15
- 5 Eaton, S. (2002) Control of mitochondrial beta-oxidation flux. *Prog. Lipid. Res.* **41**, 197-239
- 6 Kerner, J. and Hoppel, C. (2000) Fatty acid import into mitochondria. *Biochim. Biophys. Acta.* **1486**, 1-17
- 7 Weis, B. C., Cowan, A. T., Brown, N., Foster, D. W. and McGarry, J. D. (1994) Use of a selective inhibitor of liver carnitine palmitoyltransferase I (CPT I) allows quantification of its contribution to total CPT I activity in rat heart. Evidence that the dominant cardiac CPT I isoform is identical to the skeletal muscle enzyme. *J. Biol. Chem.* **269**, 26443-26448
- 8 Awan, M. M. and Saggerson, E. D. (1993) Malonyl-CoA metabolism in cardiac myocytes and its relevance to the control of fatty acid oxidation. *Biochem. J.* **295** (Pt 1), 61-66
- 9 Saddik, M., Gamble, J., Witters, L. A. and Lopaschuk, G. D. (1993) Acetyl-CoA carboxylase regulation of fatty acid oxidation in the heart. *J. Biol. Chem.* **268**, 25836-25845
- 10 Carley, A. N., Atkinson, L. L., Bonen, A., Harper, M. E., Kunnathu, S., Lopaschuk, G. D. and Severson, D. L. (2007) Mechanisms responsible for enhanced fatty acid utilization by perfused hearts from type 2 diabetic db/db mice. *Arch. Physiol. Biochem.* **113**, 65-75
- 11 Luiken, J. J., van Nieuwenhoven, F. A., America, G., van der Vusse, G. J. and Glatz, J. F. (1997) Uptake and metabolism of palmitate by isolated cardiac myocytes from adult rats: involvement of sarcolemmal proteins. *J. Lipid. Res.* **38**, 745-758
- 12 Bonen, A., Han, X. X., Habets, D. D., Febbraio, M., Glatz, J. F. and Luiken, J. J. (2007) A null mutation in skeletal muscle FAT/CD36 reveals its essential role in insulin- and AICAR-stimulated fatty acid metabolism. *Am. J. Physiol. Endocrinol. Metab.* **292**, E1740-1749
- 13 Rupp, H., Wahl, R. and Hansen, M. (1992) Influence of diet and carnitine palmitoyltransferase I inhibition on myosin and sarcoplasmic reticulum. *J. Appl. Physiol.* **72**, 352-360
- 14 Schmitz, F. J., Rosen, P. and Reinauer, H. (1995) Improvement of myocardial function and metabolism in diabetic rats by the carnitine palmitoyl transferase inhibitor Etomoxir. *Horm. Metab. Res.* **27**, 515-522
- 15 Hayashi, K., Okumura, K., Matsui, H., Murase, K., Kamiya, H., Saburi, Y., Numaguchi, Y., Toki, Y. and Hayakawa, T. (2001) Involvement of 1,2-diacylglycerol in improvement of heart function by etomoxir in diabetic rats. *Life Sci.* **68**, 1515-1526
- 16 Cabrero, A., Merlos, M., Laguna, J. C. and Carrera, M. V. (2003) Down-regulation of acyl-CoA oxidase gene expression and increased NF-kappaB activity in etomoxir-induced cardiac hypertrophy. *J. Lipid Res.* **44**, 388-398

Etomoxir and cardiac fatty acid utilization

- 17 Campbell, S. E., Tandon, N. N., Woldegiorgis, G., Luiken, J. J., Glatz, J. F. and Bonen, A. (2004) A novel function for fatty acid translocase (FAT)/CD36: involvement in long chain fatty acid transfer into the mitochondria. *J. Biol. Chem.* **279**, 36235-36241
- 18 Scholte, H. R., Jennekens, F. G. and Bouvy, J. J. (1979) Carnitine palmitoyltransferase II deficiency with normal carnitine palmitoyltransferase I in skeletal muscle and leucocytes. *J. Neurol. Sci.* **40**, 39-51
- 19 Hasselbaink, D. M., Roemen, T. H. and van der Vusse, G. J. (2002) Protein acylation in the cardiac muscle like cell line, H9c2. *Mol. Cell. Biochem.* **239**, 101-112
- 20 Yotsumoto, T., Naitoh, T., Kitahara, M. and Tsuruzoe, N. (2000) Effects of carnitine palmitoyltransferase I inhibitors on hepatic hypertrophy. *Eur. J. Pharmacol.* **398**, 297-302
- 21 Koonen, D. P., Coumans, W. A., Arumugam, Y., Bonen, A., Glatz, J. F. and Luiken, J. J. (2002) Giant membrane vesicles as a model to study cellular substrate uptake dissected from metabolism. *Mol. Cell. Biochem.* **239**, 121-130
- 22 Kammermeier, H. and Rose, H. (1988) Are isolated cardiomyocytes a suitable experimental model in all lines of investigation in basic cardiology? *Basic Res. Cardiol.* **83**, 343-349
- 23 Arieli, R., Ben-Haim, S. A., Hayam, G. and Edoute, Y. (1992) Heart energetic efficiency in O₂-exposed rats studied in isolated working heart. *J. Appl. Physiol.* **73**, 2289-2296
- 24 Ylitalo, K., Ala-Rami, A., Vuorinen, K., Peuhkurinen, K., Lepojarvi, M., Kaukoranta, P., Kiviluoma, K. and Hassinen, I. (2001) Reversible ischemic inhibition of F(1)F(0)-ATPase in rat and human myocardium. *Biochim. Biophys. Acta.* **1504**, 329-339
- 25 Randle, P. J., Garland, P. B., Newsholme, E. A. and Hales, C. N. (1965) The glucose fatty acid cycle in obesity and maturity onset diabetes mellitus. *Ann. N. Y. Acad. Sci.* **131**, 324-333
- 26 Bartlett, K. and Eaton, S. (2004) Mitochondrial beta-oxidation. *Eur. J. Biochem.* **271**, 462-469
- 27 Westerhoff, H. V., Groen, A. K. and Wanders, R. J. (1984) Modern theories of metabolic control and their applications (review). *Biosci. Rep.* **4**, 1-22
- 28 Vetter, R. and Rupp, H. (1994) CPT-1 inhibition by etomoxir has a chamber-related action on cardiac sarcoplasmic reticulum and isomyosins. *Am. J. Physiol.* **267**, H2091-2099
- 29 Kato, K., Chapman, D. C., Rupp, H., Lukas, A. and Dhalla, N. S. (1999) Alterations of heart function and Na⁺-K⁺-ATPase activity by etomoxir in diabetic rats. *J. Appl. Physiol.* **86**, 812-818
- 30 Dhalla, N. S., Elimban, V. and Rupp, H. (1992) Paradoxical role of lipid metabolism in heart function and dysfunction. *Mol. Cell. Biochem.* **116**, 3-9
- 31 Zarain-Herzberg, A. and Rupp, H. (2002) Therapeutic potential of CPT I inhibitors: cardiac gene transcription as a target. *Expert Opin. Investig. Drugs.* **11**, 345-356
- 32 Stanley, W. C., Lopaschuk, G. D. and McCormack, J. G. (1997) Regulation of energy substrate metabolism in the diabetic heart. *Cardiovasc. Res.* **34**, 25-33
- 33 Coort, S. L., Hasselbaink, D. M., Koonen, D. P., Willems, J., Coumans, W. A., Chabowski, A., van der Vusse, G. J., Bonen, A., Glatz, J. F. and Luiken, J. J. (2004) Enhanced sarcolemmal FAT/CD36 content and triacylglycerol storage in cardiac myocytes from obese Zucker rats. *Diabetes.* **53**, 1655-1663
- 34 Carley, A. N. and Severson, D. L. (2005) Fatty acid metabolism is enhanced in type 2 diabetic hearts. *Biochim. Biophys. Acta.* **1734**, 112-126
- 35 Lopaschuk, G. D. (2006) Optimizing cardiac fatty acid and glucose metabolism as an approach to treating heart failure. *Semin. Cardiothorac. Vasc. Anesth.* **10**, 228-230
- 36 Rajabi, M., Kassiotis, C., Razeghi, P. and Taegtmeier, H. (2007) Return to the fetal gene program protects the stressed heart: a strong hypothesis. *Heart Fail. Rev.* **12**, 331-343

Etomoxir and cardiac fatty acid utilization

37 Kampf, J. P. and Kleinfeld, A. M. (2007) Is membrane transport of FFA mediated by lipid, protein, or both? An unknown protein mediates free fatty acid transport across the adipocyte plasma membrane. *Physiology (Bethesda)*. **22**, 7-14

38 Habets, D. D., Coumans, W. A., Voshol, P. J., den Boer, M. A., Febbraio, M., Bonen, A., Glatz, J. F. and Luiken, J. J. (2007) AMPK-mediated increase in myocardial long-chain fatty acid uptake critically depends on sarcolemmal CD36. *Biochem. Biophys. Res. Commun.* **355**, 204-210

Accepted Manuscript

THIS IS NOT THE VERSION OF RECORD - see doi:10.1042/BJ20082159

Etomoxir and cardiac fatty acid utilization

Table

Parameter	Control	Etomoxir
Body mass _{begin} (g)	227 ± 9	228 ± 10
Body mass _{end} (g)	256 ± 9	253 ± 9
Δ Body mass (g)	29 ± 3	25 ± 4
Heart mass (g)	0.79 ± 0.02	0.88 ± 0.03*
Heart mass/body mass (*10 ³)	3.70 ± 0.20	4.10 ± 0.20
Liver mass (g)	10.6 ± 0.3	11.9 ± 0.4*
Liver mass/body mass (*10 ³)	41.3 ± 1.1	46.9 ± 1.5*
Hindlimb mass (g)	1.50 ± 0.05	1.50 ± 0.03
Hindlimb mass/body mass (*10 ³)	5.87 ± 0.02	5.94 ± 0.11
Plasma glucose (mmol/l)	7.50 ± 0.23	7.76 ± 0.37

Table 1. Characteristics of rats treated for 8 days with 20 mg/kg etomoxir. Data are means ± SEM, * p<0.05, etomoxir-treated rats (n=6) versus control rats (n=6).

Etomoxir and cardiac fatty acid utilization

Figure legends

Figure 1. Effects of *in vivo* etomoxir treatment on CPT-I activity and triacylglycerol content in heart and liver.

(A) CPT-I activity was measured in tissue homogenates, and (B) triacylglycerol content was measured in pieces of tissue as described in Materials and Methods. Data are means \pm S.E.M. for experiments carried out with tissue preparations from 4 control rats (C) and 4 etomoxir-treated rats (Eto). *Significantly different from control ($P < 0.05$).

Figure 2. Effect of *in vivo* etomoxir treatment on expression of M-CPT-I and OXPHOS complexes in the heart.

Contents of (A) M-CPT-I and (B) OXPHOS complexes were measured in heart homogenates using Western blotting. (A) The Western blot left of the graph demonstrates that the used antibody (gift from prof. V. Zammit, Hannah Research Institute, Scotland) is specific against M-CPT-I. Namely, an 88 kDa signal was detected in the heart, corresponding to the reported molecular mass of M-CPT-I [6], whereas such signal was undetectable in liver, which expresses only L-CPT-I. Gels were loaded with equal quantities of protein for each cell lysate (50 μ g per lane). Representative blots are shown comparing cardiac expression levels of (A) M-CPT-I, (B) OXPHOS complexes, and of β -actin (loading control, detected at 45 kDa) between control and etomoxir-treated rats. Complex I was detected at 20 kDa, complex II at 30 kDa and complex V at 60 kDa. Data are means \pm S.E.M. for experiments carried out with heart homogenates from 6 rats in each group. C, control rats; Eto, etomoxir treated rats. *Significantly different from control ($P < 0.05$). vesicle preparations.

Figure 3. Effect of *in vivo* etomoxir treatment on expression and sarcolemmal localization of FABPpm and CD36 in the heart and on cardiac LCFA transport capacity.

(A) Characterization of giant vesicles as sarcolemmal preparation. Heart homogenates (H) and heart giant vesicles (GV) were prepared as described in Materials and Methods, and used for measurement of contents of caveolin-3 and CPT-I. (B) Heart homogenates were used for measurement of total tissue expression of FABPpm and CD36 (total protein), and giant vesicles were used to (C) detect both transporters at the sarcolemma (sarcolemmal protein), and to (D) measure palmitate uptake. Representative Westerns are shown. Caveolin-3 was detected at 18 kDa, CPT-I at 88 kDa, FABPpm at 43 kDa, and CD36 at 88 kDa. Data are means \pm S.E.M. for experiments carried out with heart homogenates or vesicle preparations from 6 rats in each group. C, control rats; Eto, etomoxir treated rats. *Significantly different from control ($P < 0.05$).

Figure 4. Effect of *in vivo* etomoxir treatment on phosphorylation of ACC in oligomycin-stimulated cardiac myocytes.

Cardiac myocytes were isolated from control rats (C) and etomoxir-treated rats (Eto). Then, cardiac myocytes were incubated for 15 min in the absence or presence of 30 μ M oligomycin. For assessment of cellular content of AMPK α 2 (predominant isoform of the catalytic α -subunit of AMPK in the heart, detected at 63 kDa and used as loading control) and of phosphorylation of ACC-Ser79, cardiac myocytes were pelleted, dissolved in sample buffer, after which Westerns were performed with phosphospecific antibodies. Gels were loaded with equal quantities of protein for each cell lysate (50 μ g per lane). A representative Western Blot is presented out of 3 experiments.

Etomoxir and cardiac fatty acid utilization

Figure 5. Effect of *in vivo* etomoxir treatment on substrate utilization into cardiac myocytes.

Cardiac myocytes were isolated from control rats (C) and etomoxir-treated rats (Eto). Then, cardiac myocytes were incubated for 15 min in the absence or presence of 30 μ M oligomycin (Oli), and subsequently used for measurement of palmitate uptake (A, B), palmitate oxidation (C, D), and deoxyglucose uptake (E, F) at 100 μ M (A, C, E) and 600 μ M (B, D, F) externally added palmitate. Grey bars present non-treated cardiac myocytes from control rats, and black bars present non-treated cardiac myocytes from etomoxir-treated rats. Corresponding hatched bars present oligomycin-treated cardiac myocytes from control and etomoxir-treated rats. Data are means \pm S.E.M. for experiments carried out with cardiac myocyte preparations from 6 rats in each group. *Significantly different from control ($P < 0.05$).

Accepted Manuscript

THIS IS NOT THE VERSION OF RECORD - see doi:10.1042/BJ20082159

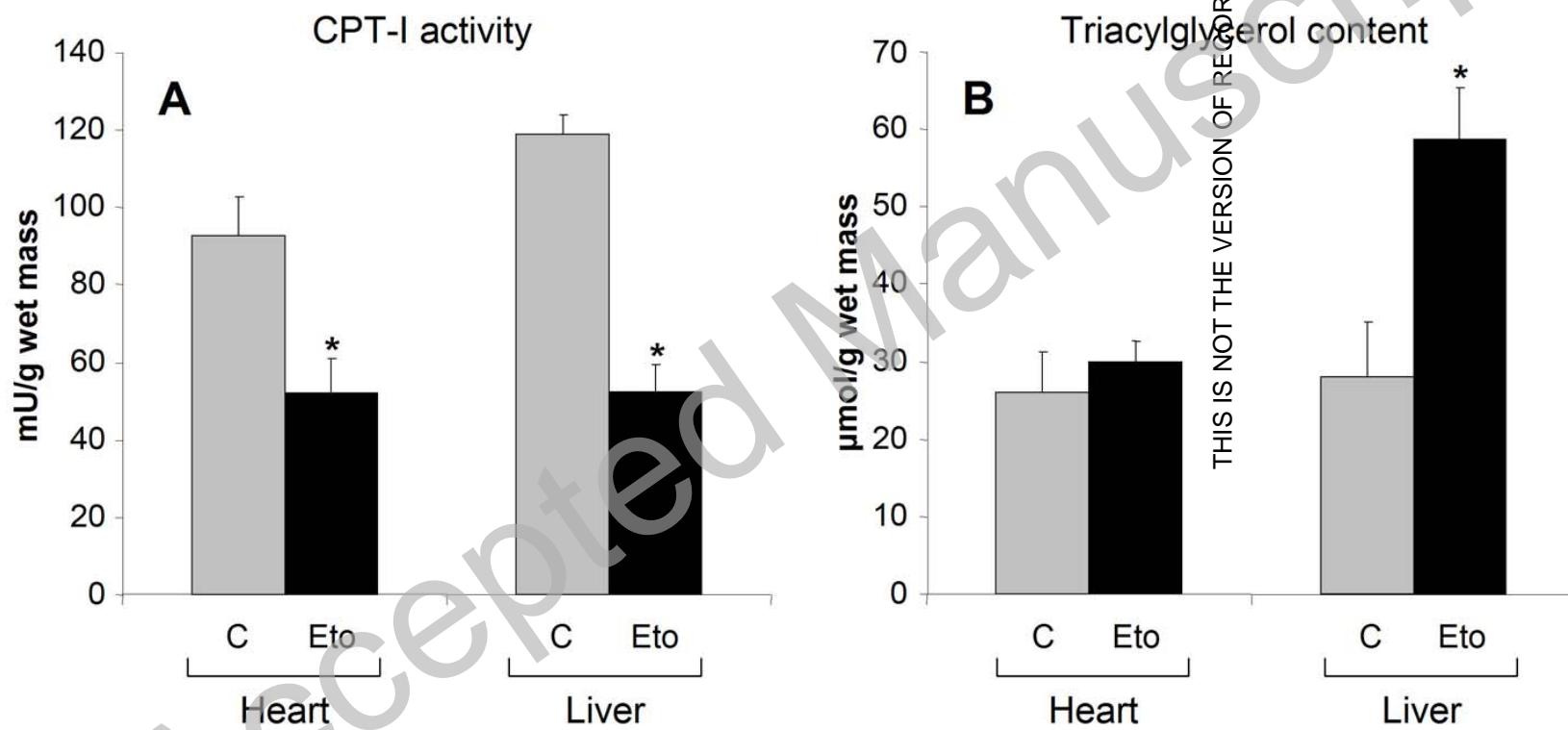


Figure 1

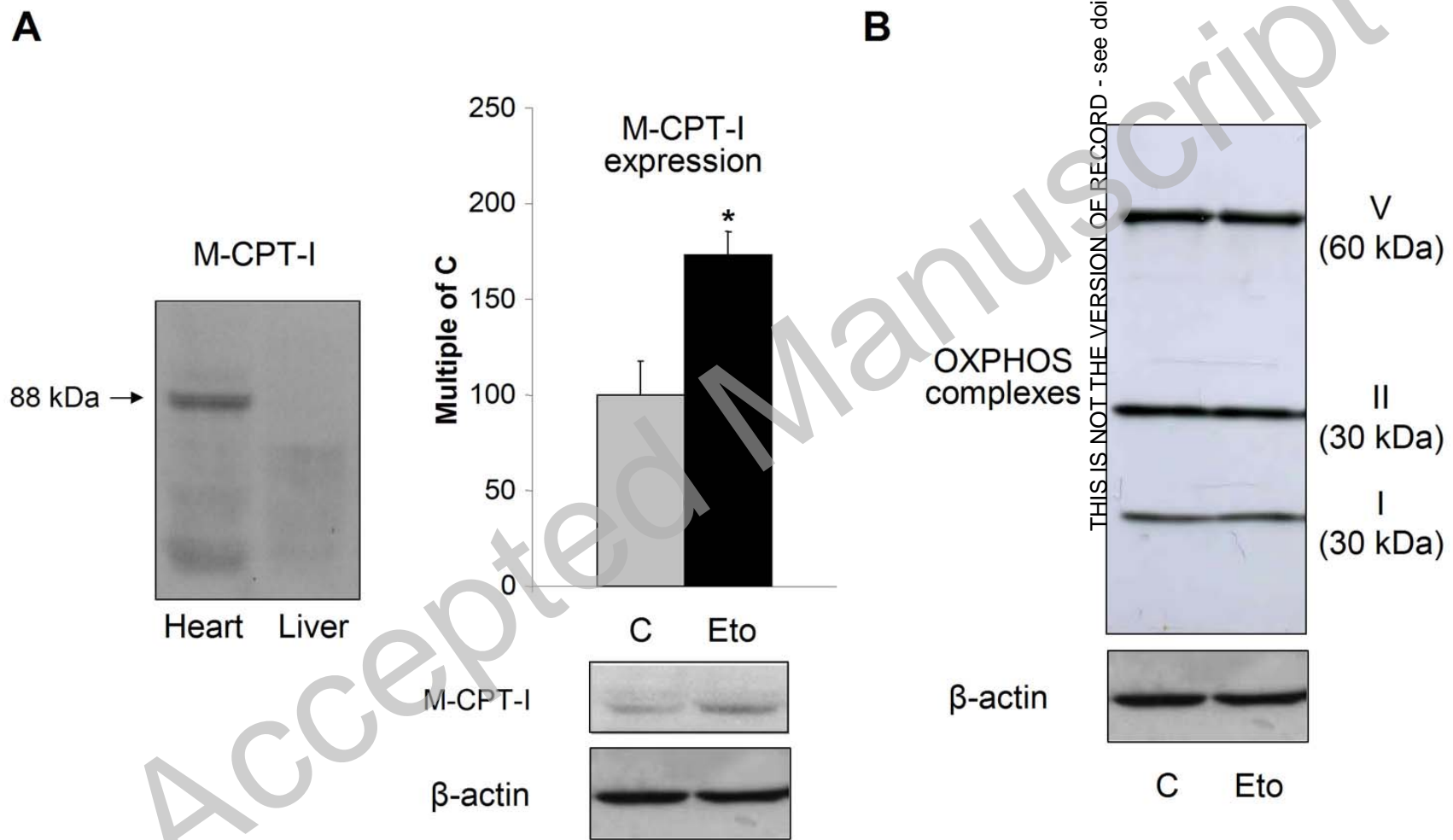


Figure 2

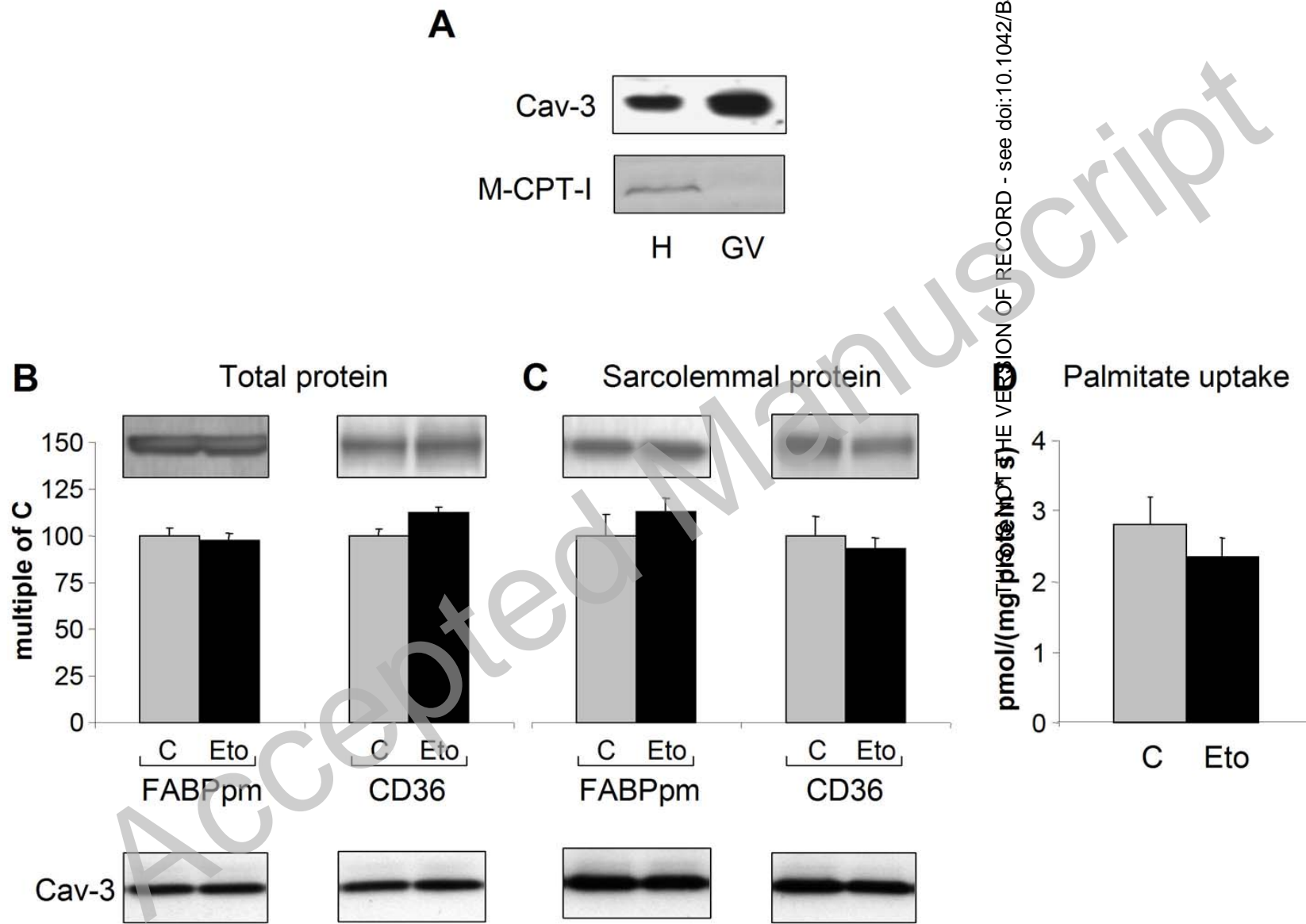
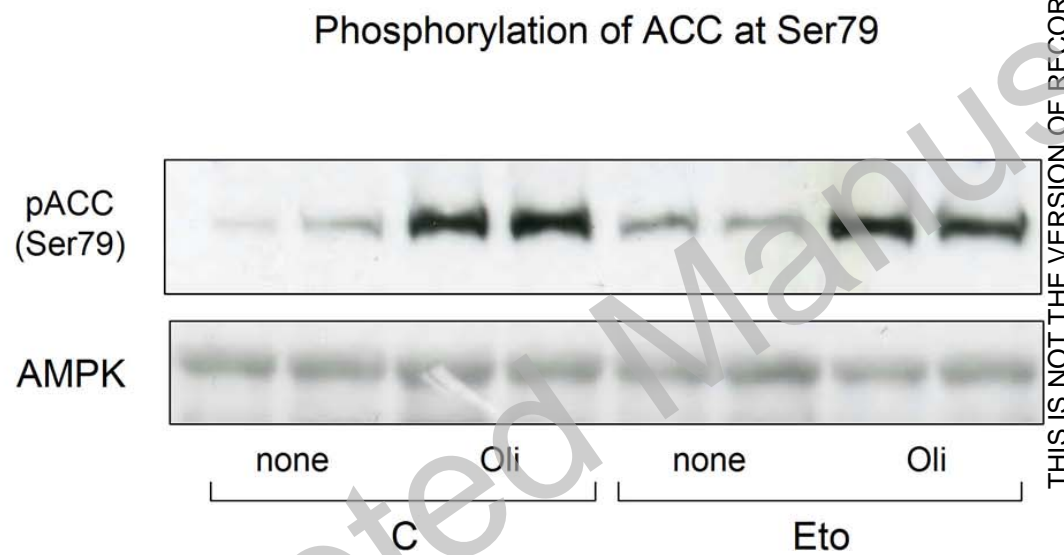


Figure 3

ACCEPTED MANUSCRIPT
 THE VERSION OF RECORD - see doi:10.1042/BJ20082159



THIS IS NOT THE VERSION OF RECORD - see doi:10.1042/BJ20082159

Figure 4

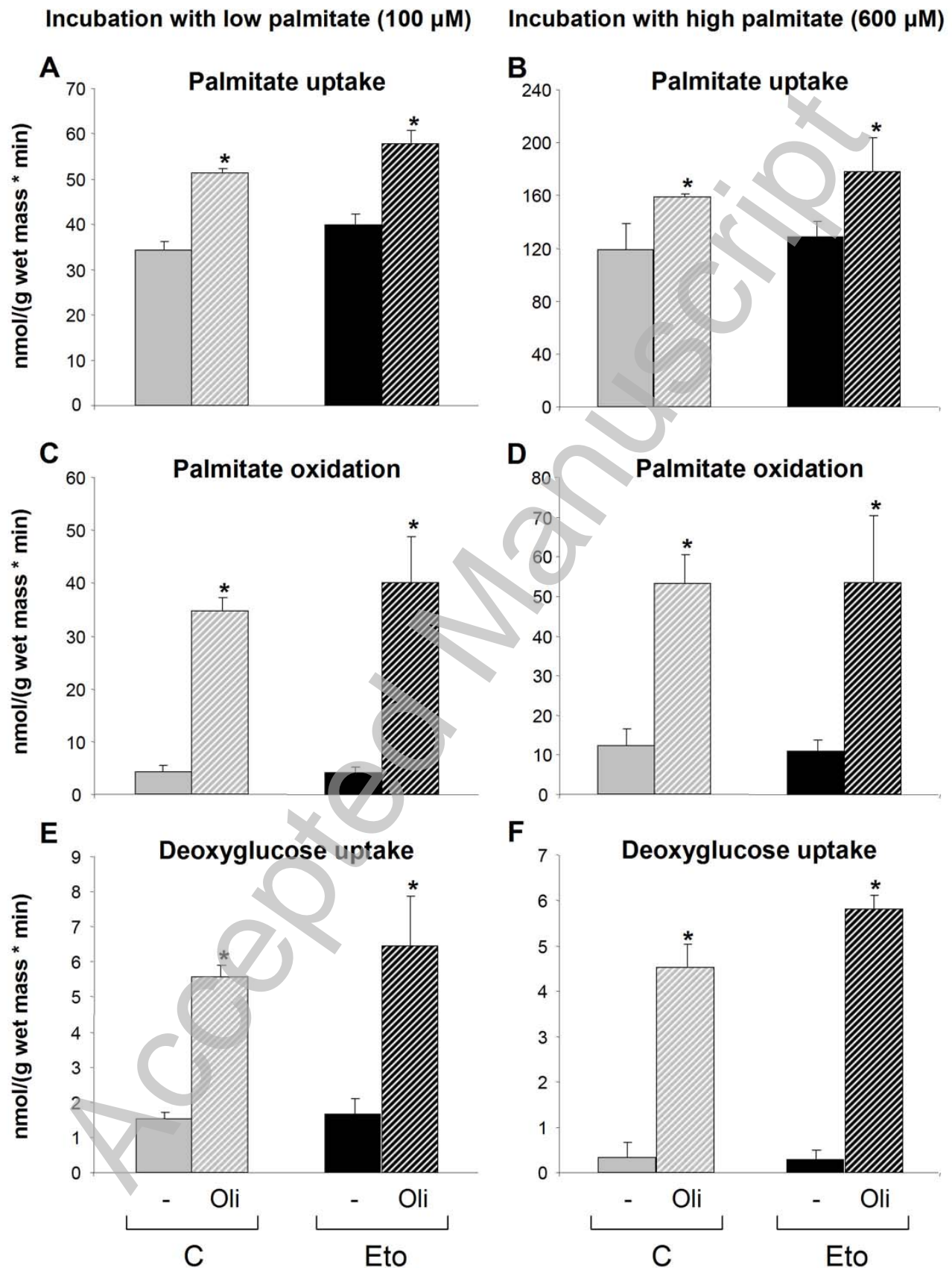


Figure 5