



HAL
open science

The PRH/Hex repressor protein causes nuclear retention of Groucho/TLE corepressors

Cecile Desjobert, Peter Noy, Tracey Swingler, Hannah Williams, Kevin L Gaston, Padma-Sheela Jayaraman

► **To cite this version:**

Cecile Desjobert, Peter Noy, Tracey Swingler, Hannah Williams, Kevin L Gaston, et al.. The PRH/Hex repressor protein causes nuclear retention of Groucho/TLE corepressors. *Biochemical Journal*, 2008, 417 (1), pp.121-132. 10.1042/BJ20080872 . hal-00479017

HAL Id: hal-00479017

<https://hal.science/hal-00479017>

Submitted on 30 Apr 2010

HAL is a multi-disciplinary open access archive for the deposit and dissemination of scientific research documents, whether they are published or not. The documents may come from teaching and research institutions in France or abroad, or from public or private research centers.

L'archive ouverte pluridisciplinaire **HAL**, est destinée au dépôt et à la diffusion de documents scientifiques de niveau recherche, publiés ou non, émanant des établissements d'enseignement et de recherche français ou étrangers, des laboratoires publics ou privés.

The PRH/Hex repressor protein causes nuclear retention of Groucho/TLE corepressors.

Cecile Desjobert², Peter Noy¹, Tracey Swingler,² Hannah Williams², Kevin Gaston² and Padma-Sheela Jayaraman^{1,2*}

¹Division of Immunity and Infection, School of Medicine, University of Birmingham, Edgbaston, Birmingham, B152TT, U.K. and ²Department of Biochemistry, Medical School, University Walk, University of Bristol BS81TD, UK.

Running title: Transcriptional co-repression by PRH and TLE

*corresponding author

Phone: (+44-121-414-6820)

Fax: (+ 44-121-414-8817)

E-mail: p.jayaraman@bham.ac.uk

Abbreviations: PRH, Proline-Rich Homeodomain; TLE, transducin-like Enhancer of split; TK, thymidine kinase;

SYNOPSIS

The Proline-Rich Homeodomain protein (PRH/Hex) is a transcription factor that functions as an important regulator of vertebrate development and many other processes in the adult including haematopoiesis. The Groucho/TLE family of co-repressor proteins also regulate development and modulate the activity of many DNA-binding transcription factors during a range of diverse cellular processes including haematopoiesis. We have shown previously that PRH is a repressor of transcription in haematopoietic cells and that an Eh-1 motif present within the N-terminal transcription repression domain of PRH mediates binding to Groucho/TLE proteins and enables co-repression. Here we demonstrate that PRH regulates the nuclear retention of TLE proteins during cellular fractionation. We show that transcriptional repression and the nuclear retention of TLE proteins requires PRH to bind to both TLE and DNA. In addition, we characterise a trans-dominant negative PRH protein that inhibits wild type PRH activity by sequestering TLE proteins to specific sub-nuclear domains. These results demonstrate that transcriptional repression by PRH is dependent on TLE availability and suggest that sub-nuclear localisation of TLE plays an important role in transcriptional repression by PRH.

Key words: Transcriptional repression, nuclear retention, PRH, HEX, Groucho, TLE, co-repressor, haematopoiesis, trans-dominant negative.

Accepted Manuscript

THIS IS NOT THE VERSION OF RECORD - see doi:10.1042/BJ20080872

INTRODUCTION

Transcription factors that bind to DNA are important regulators of multiple processes in the cell and often act in conjunction with non-DNA binding co-repressors and co-activators to bring about changes in gene expression. Generally the role of the co-regulatory proteins is to recruit chromatin remodelling enzymes or chromatin binding proteins in order to set up more open or closed chromatin configurations. Most co-activators and co-repressors are able to interact with a variety of DNA bound factors to regulate gene expression. The **Proline-Rich Homeodomain** protein (PRH/Hex) is a DNA binding transcription factor, that can regulate gene expression in a number of tissues using multiple mechanisms, (reviewed in Soufi and Jayaraman 2008 [1]). PRH forms oligomers in cells and can bind to DNA in the oligomeric state [2]. When bound to DNA, PRH generally functions as a repressor of transcription [3-6] and we have shown previously that PRH can recruit members of the Groucho/TLE family of co-repressor proteins [7]. However, in some contexts PRH functions as a DNA bound activator of transcription [8]. PRH can also regulate transcription without binding to DNA by regulating the activity of other DNA-binding transcription factors [9-11]. In addition, PRH can regulate gene expression post-transcriptionally by regulating the transport of specific mRNAs from the nucleus to the cytoplasm [12].

PRH regulates embryonic development in all vertebrates and is necessary for the development of embryonic forebrain, thyroid, lungs, liver and heart [13-15]. PRH also plays a role in the early development of vascular tissues and the formation of haematopoietic lineages [13;16-20]. In the adult, PRH is expressed in thyroid, liver and lungs [21] and may play a role in maintenance of differentiation of these tissues. Moreover this protein regulates haematopoiesis in the embryo and in the adult [13;22]. PRH is strongly expressed in pluripotent haematopoietic progenitors, in erythromyeloid and B-cell progenitors but not in T-cell lineages [20;23-25]. In general, the gradual down-regulation of PRH is associated with differentiation of most haematopoietic lineages [24;26]. PRH interacts with the growth control proteins PML and translation initiation factor eIF4E [27] and has been shown to regulate cell growth or differentiation in haematopoietic cells as well as in a number of different tissues [16;28;29]. Decreased PRH expression and loss of nuclear localisation of PRH is implicated in a number of human myeloid leukaemias [30;31]. In addition a chromosomal translocation resulting in a PRH fusion protein that can activate transcription and has trans-dominant negative activity over wild type PRH has been shown to be a causative agent in Acute Myeloid Leukaemia [32].

The PRH protein consists of three regions: a proline-rich N-terminal domain, a central homeodomain, and an acidic C-terminal domain. The proline-rich N-terminal domain of PRH can make multiple protein-protein interactions and binds to several proteins including PML [27], eIF4E [12], proteasome subunit HC8 [33] and members of the Groucho/TLE [7] family of co-repressor proteins. PRH forms foci in haematopoietic cells and exists as oligomeric complexes *in vivo* and *in vitro* [2]. The N-terminal domain of PRH is required for oligomerisation and transcriptional repression and can influence the DNA binding activity of the PRH homeodomain [2;34]. As well as binding to DNA [6], the PRH homeodomain is important in PRH oligomerisation [2] and forms protein-protein interactions with other transcription factors [11]. The C-terminal domain of PRH is rich in acidic residues but appears to play no role in repression [6]. However, both the homeodomain and C-terminal domain are reported to play a role in transcription activation by PRH [35].

The TLE proteins are members of a family of transcription co-repressors that includes the archetypical *Drosophila* protein Groucho. Like PRH, Groucho/TLE family proteins are involved in many developmental decisions including: neuronal and epithelial cell differentiation, segmentation and sex determination and the differentiation of haematopoietic, osteoblast and pituitary cells [36-40]. Members of the Groucho/TLE family do not have DNA binding activity but are instead recruited to DNA by interactions with DNA binding proteins. Once recruited to a promoter, these proteins can bring about long range transcriptional repression by recruiting histone deacetylases [41-43] and by interacting directly with histones [44]. TLE proteins form tetramers and larger oligomeric complexes and oligomerisation is essential for co-repression [45;46]. The TLE proteins are phosphoproteins and are hyperphosphorylated during the cell cycle and during cell differentiation [45;47;48]. A subset of the DNA binding transcription factors that interact with Groucho/TLE proteins in the haematopoietic compartment, including Hes1, Runx-1 and Pax5, have been shown to play a role in regulating TLE phosphorylation and modulating its activity [49;50]. For example, Hes1- and Runx-1-dependent phosphorylation of nuclear TLE-1 by CK2 has been shown to increase its co-repressor activity and its association with chromatin [49]. In contrast, phosphorylation of TLE by homeodomain interacting protein kinase 2 (HIPK2) decreases its co-repression ability [51].

We have shown previously that endogenous PRH and TLE are present in both the cytoplasmic and the nuclear compartments of K562 cells [7]. We have also shown that a short sequence of amino acids in the PRH N-terminal domain, known as the Engrailed homology motif (Eh-1), mediates the binding of PRH to TLE proteins. Moreover we demonstrated that a direct interaction between TLE1 and PRH is required for co-repression of transcription [7]. In the present study we demonstrate that PRH brings about nuclear retention of endogenous TLE proteins in early myeloid progenitors (K562-blasts). Furthermore we show that a mutated form of PRH that is defective in DNA binding can function as a trans-dominant negative of wild-type PRH by sequestering TLE proteins.

EXPERIMENTAL

Mammalian Expression and reporter plasmids

The mammalian expression plasmid pMUG1-Myc-PRH expresses Myc-tagged human PRH (amino acids 7-270). pMUG1-Myc-PRH and pMUG1-Myc-PRHF32E have been described previously [7]. A QuikChange kit (Stratagene) was used according to the manufacturer's instructions for the mutagenesis of pMUG1-Myc-PRH to produce pMUG1-Myc-PRH R188AR189A and pMUG1-Myc-PRH N187A, and for the mutagenesis of pMUG1-Myc-PRHF32E to produce pMUG1-Myc-PRHF32E/R188AR189A and pMUG1-Myc-PRHF32E/N187A. The resulting mutants were fully sequenced to confirm the sequence change. pcDNA3-Myc-PRH-HD 130-198 was created by cloning a BamHI-EcoRI fragment encoding the PRH homeodomain (amino acids 130-198 followed by an in frame stop) into the pcDNA3 vector (Invitrogen). The fragment was generated using PCR and a 5' primer that contains the Myc epitope. The Myc tag is underlined. 5' primer 5'CGGGAATCCATGGAACAAAACTCATCTCAGAAGAGGATCTGTTGCAG AGGCCTCTGCATAAAAGG 3', 3' primer 5'AGAGAATTCCTACTCCTGTTT TAGTCTCCTCCA 3' The eGFP-PRH plasmid was constructed by inserting the PRH cDNA from a BlueScript clone into the EcoRI and KpnI sites of eGFPc1 (Clontech).

The pTK-PRH reporter plasmid has been described previously [6]. The pSV- β -galactosidase control vector (pSV-lacZ) was obtained from Promega. The mammalian expression plasmid pCMV2-Flag-TLE1 contains TLE1 coding sequence in frame with the Flag epitope [7].

Bacterial Expression Plasmids

The plasmid pTrcHisA-hPRH expresses recombinant full-length histidine-tagged and Myc-tagged human PRH₇₋₂₇₀ in bacteria and has been described previously [2]. pTrcHisA-PRH-hHD expresses a histidine tagged truncated PRH construct consisting of the human PRH homeodomain. This construct was generated by cloning a PCR fragment carrying the PRH human homeodomain (amino acids 130-198 followed by an in frame stop) between the XhoI and EcoRI sites of pTrcHisA using the primers 5'AGACTCGAGTTGCAGAGGCCTCTGCATAA AAGG 3' and 5'AGAGAATTCCTACTCCTGTTTTAGTCTCCTCCA 3' (the restriction sites are underlined). The expression plasmids pTrcHisA-Myc-PRHF32E, pTrcHisA-Myc-PRH R188A,R189A, pTrcHisA-Myc-PRH N187A, pTrcHisA-Myc-PRHF32E/R188A,R189A and pTrcHisA-Myc-PRHF32E/N187A were created by cloning BamHI-EcoRI fragments encoding the mutated human PRH cDNAs from the corresponding pMUG1 series of plasmids (described above) into pTrcHisA.

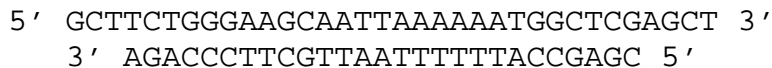
Expression and purification of tagged-PRH proteins

The His-PRH fusion proteins were expressed in BL21 pLysS cells (Novagen). Fusion protein expression was induced with 1mM IPTG. Cells were harvested after 4h at 37°C, resuspended in lysis buffer (100mM phosphate buffer pH 7.4, 300mM NaCl, 10mM imidazole, 5 μ g/ml DNase, 10 μ g/ml RNase) and lysed by the addition of 100 μ l of lysozyme (1mg/ml) for 20min, followed by 4 bursts of sonication at 60% amplitude. After centrifugation for 30min at 18000rpm (Sorval RC-3B rotor) the His-PRH fusion proteins contained in the supernatant were purified over a Hitrap chelating column charged with nickel ions (1ml, Amersham Pharmacia Biotech) using an ÄKTA FPLC system and UNICORN 3.10 software. Proteins were eluted

with a 250mM imidazole buffer. Aliquots of these proteins were assayed for purity by SDS-PAGE followed by staining with Coomassie blue. Proteins were quantified using the Bio-RAD phosphoric acid protein assay and stored at -80°C after dialysis into PBS containing 20% glycerol.

EMSA

A double-stranded oligonucleotide carrying a PRH binding site was produced by heating the complementary single-stranded oligonucleotides shown below at 90°C for 1 minute and then slow cooling to 20°C :



This oligonucleotide (400ng) was labelled with $[\alpha^{32}\text{P}]$ dATP using Klenow enzyme at 30°C for 30 minutes. Unincorporated $[\alpha^{32}\text{P}]$ dATP was then removed using a Micro Bio-Spin 6 column (Bio-Rad). The labelled oligonucleotide (100pM) was incubated with purified His-tagged proteins in 20mM Tris pH 8.0, 50mM NaCl, 1mM MgCl_2 , 1mM dithiothreitol, 80ng/ml poly(dI,dC)(dI,dC), 0.5mg/ml bovine serum albumin, and 10% glycerol at 4°C for 30min. Free and bound DNA was then separated on 6% non-denaturing polyacrylamide gels run in 0.5xTBE and quantified using a PhosphorImager with Molecular Dynamics ImageQuant software (version 3.3). All experiments were repeated three times.

Cell culture and transfection assays

K562 cells were maintained in DMEM media supplemented with 10% foetal calf serum and penicillin/ streptomycin at 37°C in an atmosphere of 5% CO_2 , 20% O_2 and 80% N_2 . For transient transfection assays cells were transferred to 0.4cm electroporation cuvettes at a density of 1×10^7 cells in 200 μl of media. The cells and 5 μg of the luciferase reporter plasmid and 5 μg of the β -galactosidase reporter plasmid were mixed by pipetting and electroporated at 250V, 975 μF . In repression experiments the cells were co-transfected with either pMUG1 vector or the pMUG1-Myc-PRH series of plasmids as detailed in the Results. Electroporated cells were incubated for 24 hours as described above. The cells were then harvested by centrifugation and luciferase activity assayed using the Promega Luciferase Assay System according to the manufacturer's instructions. A β -galactosidase assay was performed as an internal control for transfection efficiency: 40 μl of cell lysate was mixed with 900 μl of Z buffer (60mM Na_2HPO_4 , 40mM NaH_2PO_4 , 10mM KCl, 1mM MgSO_4 , 50mM β -mercaptoethanol) and 200 μl of ONPG (4mg/ml) and incubated at 37°C for at 1h. The reaction was stopped by adding 200 μl of 1M Na_2CO_3 and the absorbance measured at 420nm. After subtraction of the background, the luciferase counts were normalised against the β -galactosidase value.

Whole cell extracts and cell fractionation

Whole cell extracts from 2×10^7 K562 cells were made as follows. The cell pellet was collected by centrifugation for 5 min at 1500rpm in a Centurion bench top centrifuge. The cell pellet was washed in PBS twice and then resuspended in 400 μl lysis buffer (150mM NaCl, 50mM Tris pH 7.5, 0.1% SDS, 0.1% NP-40). The cell suspension was drawn up and down six times through a 3 X Monojet needle (1.1x50mm, 19Gx2"), incubated on ice for 20 min, and then centrifuged at maximum speed for 15 min at 4°C in a microcentrifuge.

Nuclear and post nuclear extracts were made as follows: 2×10^7 K562 cells were centrifuged at 4000rpm (IEC Centra 4B) and the pellet was resuspended in 400 μ l (20mM Tris pH7.5, 5mM MgCl₂, 1mM DTT containing protease inhibitor cocktail (SIGMA)) at 4°C for 10min. 15 μ l NP40 (10%v/v) was added to the lysate and mixed by vortexing. The lysate was centrifuged for 1 min at 13,000rpm in a microcentrifuge and the supernatant removed and stored at -80°C as the soluble post-nuclear fraction. The nuclei in the pellet were resuspended in (50mM Tris pH7.5, 500mM NaCl, 1% NP40, 0.1% SDS, containing protease inhibitor cocktail (Roche)) for 20 min at 4°C and then centrifuged for 1 min at 13,000 rpm in a microcentrifuge. The supernatant was removed and stored at -80°C as the soluble nuclear extract.

Phosphatase experiments

Calf Intestinal Phosphatase (CIP) and CIP buffer was obtained from (Fermentas). K562 nuclear extracts prepared from cells expressing Myc-PRH were incubated with a cocktail of phosphatase inhibitors in CIP buffer for 30 mins at 4°C or 37°C. (Phosphatase inhibitor cocktail: NaF 50mM, Na₃VO₄ 1mM, Na β glycerophosphate 10mM, EDTA 1mM, Na pyrophosphate 5mM). 1 or 2 μ l of CIP was added to nuclear extracts either containing phosphatase inhibitors or without phosphatase inhibitors for 30 mins at 37°C.

Co-immunoprecipitation assays

K562 cells (2×10^7) were co-transfected with pCMV2-FLAG-TLE1 and either pMUG1-Myc-PRH or one of the pMUG1-Myc-PRH derivatives as described above. Whole cell extracts were prepared by resuspending the cell pellet into 150 μ l of lysis buffer (50mM Tris pH8, 100mM NaCl, 20 mM NaF, 10mM KH₂PO₄, 1mM DTT, 1% Triton, 10% glycerol) for 30 min at 4°C. An equivalent volume of binding buffer (50mM Tris pH8, 100mM KCl, 0.1mM EDTA, 2mM DTT, 0.2% Nonidet P-40, 0.1% BSA, 2.5% glycerol) was added to the lysate before incubation with a monoclonal anti-Myc9E10 antibody (Santa Cruz Biotechnology) for 1h at 4 °C under agitation. Protein G beads (Sigma) were then washed with the binding buffer and incubated with the extracts for a further 2h at 4°C. After this time, the beads were collected by centrifugation in an Eppendorf microcentrifuge (13,000 rpm for 1 min), washed three times in 1 ml of buffer (50 mM Tris, pH8, 200mM NaCl, 2mM DTT, 0.5% Nonidet P-40), and then resuspended in SDS loading buffer. All operations were carried out at 4°C and in the presence of protease inhibitor cocktail (SIGMA). After SDS.PAGE, the proteins were immunoblotted onto Immobilon-P membrane, and tagged TLE1 and PRH were detected using an anti-FLAG- antibody (SIGMA) and Myc9E10 antibody (Santa Cruz Biotechnology) respectively.

Western Blotting

Post nuclear and nuclear fractions were collected as described above and separated by SDS.PAGE. Immunoblots analyses were performed using appropriate antibodies to detect endogenous PRH (mouse polyclonal antibody, [6;26]), Myc-tagged PRH (mouse anti-Myc9E10 antibody, Santa Cruz Biotechnology), endogenous TLE proteins (pan-TLE goat polyclonal, sc13373Santa Cruz), Flag-tagged TLE1 (rabbit anti-Flag polyclonal antibody, SIGMA), HC8 (mouse monoclonal antibody, Affiniti) tubulin, (mouse monoclonal MS-581-P1 NeoMarkers), laminA/C (rabbit polyclonal sc-20688 Santa Cruz).

Immunofluorescence

K562 cells were adhered to coverslips coated with poly-lysine. After washing in PBS the cells were fixed by incubating the coverslips with 4% paraformaldehyde for 30 min. The cells were then rinsed with PBS and incubated with PBSA (3% Donkey serum in PBS) for 40min to block non-specific antibody binding. After rinsing in PBS, antibody staining was performed for 1h with an optimised dilution for each different antibody used either alone or in combination (rabbit anti-Flag polyclonal antibody (SIGMA) 1:200 and/or a mouse anti-Myc9E10 antibody (Santa Cruz Biotechnology) 1:50). The cells were then rinsed in PBS twice and incubated with secondary antibodies for 1 hour at 22°C. PRH and TLE1 were detected with a TRITC donkey anti-mouse secondary antibody (Strattec) and an Alexa Fluor 488-labelled donkey anti-rabbit secondary antibody (Molecular Probes) respectively, both at a 1:100 dilution. The coverslips were mounted on slides with DAPI-containing mounting medium (Vectashield) and immunostained cells were viewed on a Leica DM IRBE confocal microscope. Imaging was performed using Leica Confocal Software Version 2.00.

Accepted Manuscript

THIS IS NOT THE VERSION OF RECORD - see doi:10.1042/BJ20080872

RESULTS

PRH increases the retention of TLE proteins within the nucleus

To determine whether PRH alters the sub-cellular localisation of TLE in haematopoietic cells we transfected K562 cells with plasmids expressing pFlag-TLE1 alone or pFlag-TLE1 together with GFP or GFP-PRH. We examined the sub-cellular localisation of these proteins using immunofluorescent staining and confocal microscopy. A TRITC-labelled anti-Flag antibody was used to detect Flag-TLE1, the intrinsic fluorescence of the GFP proteins was used to detect GFP and GFP-PRH, and DAPI was used to detect DNA. Data from representative transfected cells are shown in Figure 1A. When expressed alone Flag-TLE1 (red) is present in the cytoplasm and nucleus of K562 cells (Fig. 1A middle left panel). However co-expression with GFP-PRH results in the majority of Flag-TLE1 appearing in the nucleus (Fig. 1A, middle panel) whereas co-expression with GFP results in the majority of TLE1 remaining in the cytoplasm (Fig. 1A, middle right panel). This experiment was repeated using a Myc tagged PRH protein to rule out any effects of the GFP tag on PRH activity. Immunofluorescence data from representative transfected cells are shown in Figure 1B. In the absence of Myc-PRH, Flag-TLE1 (green) is present in the nucleus but is predominantly present in the cytoplasm of K562 cells. Co-expression of Myc-PRH with Flag-TLE1 results in the majority of TLE1 appearing in the nucleus (Fig. 1A, middle right panel) together with Myc-PRH (Fig. 1A, bottom right panel). Taken together these data suggest that PRH influences the localisation of TLE proteins in the cell.

To examine whether endogenous TLE proteins are also retained in the nucleus by expression of Myc-PRH we first examined the subcellular localisation of TLE proteins using immunofluorescent staining and confocal microscopy. A FITC labelled pan-TLE polyclonal antibody was used to detect the expression of endogenous TLE proteins. However these experiments were not conclusive as expression of Myc-PRH in the nucleus hindered detection of the endogenous TLE proteins (weak FITC signal) in the cell. Therefore, to address this question we next examined the subcellular localisation of endogenous TLE proteins using subcellular fractionation and Western blotting. K562 cells or K562 cells expressing Myc-PRH were fractionated into the post nuclear fraction (PN) consisting of cytoplasmic and loosely held nuclear proteins and nuclear fractions consisting of tightly held nuclear proteins. To compare the endogenous TLE protein levels in each subcellular compartment an equal amount of protein from each fraction was loaded onto an SDS-PAGE and the TLE proteins were detected using the pan-TLE antibody. Fractionation and equal loading in each fraction was assessed by expression of tubulin in the PN fraction and laminA/C in the nuclear fraction. Figure 1C shows that endogenous TLE proteins are predominantly localised to the PN fraction although a faint band is present in the nuclear fraction (compare lanes 1 and 2). In contrast, in the presence of Myc-PRH endogenous TLE is strongly present in the nuclear fraction (Fig. 1C compare lanes 3 and 4). The blot was stripped and reprobbed with the Myc-antibody to detect the Myc-PRH. Myc-PRH is present in both the PN and nuclear fractions (Fig. 1C, lanes 3 and 4 lower panel). We conclude that PRH increases the nuclear retention of TLE proteins. Our previous immunofluorescence experiments with Myc-PRH have shown that PRH is present in both the nucleus and the cytoplasm [7]. This is in agreement with the fractionation experiments presented in Figure 1. However PRH localisation in the presence of TLE appears strongly nuclear in the immunofluorescence experiments shown above. This

suggests that co-expression of PRH with TLE has an influence on the localisation of PRH and *vice versa*.

TLE runs as a doublet on an SDS.PAG due to phosphorylation [49]. The upper TLE band in Fig. 1C (lane 4) very likely corresponds to hyperphosphorylated TLE and expression of PRH brings about an increase in the intensity of this band suggesting that PRH induces TLE phosphorylation (Fig. 1C, compare lane 1 with lane 4). To establish that the TLE proteins of retarded mobility correspond to TLE phosphoproteins induced by PRH expression we incubated K562 nuclear extracts transfected with Myc-PRH with Calf Intestinal Phosphatase (CIP). There is a predominance of the TLE band of retarded mobility (Fig. 1D, lanes 1 and 2) after incubation at 4°C or 37°C in the presence of a cocktail of phosphatase inhibitors. Incubation of nuclear extracts with CIP in the absence of phosphatase inhibitors results in a decrease in the intensity of this upper band and an increase in intensity of the lower TLE band (lanes 3 and 4). In contrast, incubation of the extracts with CIP in the presence of phosphatase inhibitors does not lead to a change in the TLE band (lane 5). These data show that the TLE band of reduced mobility observed in the presence of Myc-PRH corresponds to phosphorylated TLE.

Mutations in the PRH homeodomain block nuclear relocalisation of TLE

To investigate whether the DNA binding and nuclear localisation activities of PRH are required for the relocalisation of TLE proteins we designed two mutations in the Myc-PRH protein: PRH N187A, and PRH R188A,R189A. These mutations lie in the homeodomain of the PRH protein and are shown in Figure 2A. The N187A mutation is predicted to significantly reduce the DNA binding activity of PRH since we have shown previously that mutation of asparagine to alanine at the equivalent position in the highly conserved avian PRH homeodomain prevents DNA binding [6]. The R188A,R189A double mutation is predicted to prevent the nuclear localisation of PRH as mutation of these arginine residues to alanine has been reported to block the nuclear localisation of PRH in NIH3T3 cells [12]. To create these mutations we performed site-directed mutagenesis of PRH in the expression plasmid pMUG1-Myc-PRH (as described in the Experimental). To check that the mutated Myc-tagged PRH proteins are expressed at similar levels K562 cells were transfected with plasmids expressing Myc-PRH or each of the mutant Myc-PRH proteins and cell extracts were produced. Western Blotting with the anti-Myc antibody and tubulin antibodies shows that these proteins are expressed at equivalent levels in K562 cells (Fig. 2B).

To determine whether PRH proteins that carry these mutations can alter the retention of TLE proteins, K562 cells, or K562 cells expressing Myc-PRH or the mutated proteins were fractionated into nuclear and PN extracts. Equal amounts of total protein from each fraction were loaded onto an SDS.PAG and Western blotted with a pan-TLE antibody (Fig. 3A, upper panel) or an anti-Myc antibody (Fig. 3A, lower panel). The blots were stripped and reprobed for lamin A/C and tubulin to examine fractionation quality and loading as before. As expected, wild type PRH is able to alter the distribution of TLE proteins in each fraction and to induce TLE hyperphosphorylation (Fig. 3A, compare lanes 1 and 5 with lanes 2 and 6). However both mutant PRH proteins are unable to influence the distribution of endogenous TLE (Fig. 3A, upper panel, lanes 7 and 8). Although these data suggest that both the DNA binding activity of PRH and the nuclear localisation of PRH are required in order to retain nuclear TLE proteins, it is clear that the nuclear localisation mutant Myc-PRH R188A,R189A is present in both the PN and nuclear extracts (Fig. 3A, lower panel).

To further examine the localisation of the mutant PRH proteins we used immunofluorescence microscopy. Figure 3B shows high magnification pictures of K562 cells stained with DAPI to visualise the DNA (blue) and with TRITC (red) to visualise the PRH proteins. When the DAPI stain and the TRITC stain are merged the cells appear pink demonstrating that wild type PRH and the mutant PRH proteins are present in the nucleus of K562 cells. These results demonstrate that in these cells PRH N187A and PRH R188A,R189A are able to localise in the nucleus like wild type PRH. We conclude that in K562 cells PRH R188A,R189A is not defective in nuclear localisation.

PRH R188A,R189A has a defect in DNA binding

We next investigated the DNA binding properties of the mutated proteins. The mutated PRH cDNAs present in the mammalian expression constructs were transferred to the pTrc-HisA bacterial expression vector (see Experimental). The resulting constructs inducibly express Histidine-tagged mutated PRH proteins in bacterial cells. Bacterial extracts expressing the mutated PRH proteins or the wild type protein were used to partially purify Histidine tagged PRH proteins over a Nickel charged affinity column and these partially purified proteins were used in EMSA with a labelled PRH binding site as described previously [2;34]. Figure 3C shows that full length His-PRH is able to bind to DNA in the EMSA and form two retarded DNA-PRH complexes. In contrast, neither His-PRH N187A nor His-PRH R188A,R189A form PRH-DNA complexes.

In summary, we have demonstrated that both PRH N187A and PRH R188A,R189A can localise to the nucleus and that they are both defective in DNA binding and influencing the nuclear retention of TLE proteins. Since both mutations in the homeodomain block DNA binding and the nuclear retention of TLE proteins but do not appear to significantly affect the nuclear retention of PRH, we conclude that DNA binding by PRH is necessary for the retention of TLE within the nucleus.

Mutation of the PRH Eh-1 motif blocks nuclear retention of TLE

To investigate whether the PRH-TLE interaction is required for the nuclear retention of TLE proteins we examined the sub cellular distribution of TLE proteins in the presence of Myc-PRH F32E (see Fig. 2). A plasmid expressing Myc-PRH F32E was produced in our earlier study [7]. The PRH F32E mutation was designed to inhibit the binding of PRH to TLE1. This mutation lies in the N-terminal Eh-1 motif in PRH and our previous studies have shown that this mutation eliminates the interaction between TLE1 and the PRH N-terminal domain [7]. K562 cells, or cells expressing Myc-PRH or Myc-PRH F32E were fractionated and Western blotted as described above. Figure 4A (upper panel) shows that PRH F32E is unable to alter the nuclear retention of endogenous TLE proteins (lanes 3 and 6). These fractionation experiments also demonstrate that the mutant PRH F32E protein is not altered in its ability to be retained in the nucleus compared to wild type PRH and is expressed at a similar level to wild type PRH (Fig. 4A, lower panel). The mutant protein shows a slightly retarded mobility compared to wild type PRH (Fig. 4A, lower panel). The changed mobility of the protein is also apparent in a fusion protein consisting of GST fused to the PRH N-terminal domain carrying the F32E mutation [7]. The reason for this apparent change in mobility is not known at present. We confirmed that the nuclear localisation of the PRH F32E is not altered compared to wild type PRH, using immunostaining experiments and confocal microscopy (Figure 4B, middle panel). Thus the F32E mutation in the Eh-1 domain of PRH does not appear to alter nuclear

localisation of PRH but does block the influence of PRH on the retention of TLE proteins.

To check that the DNA binding properties of PRH are not altered by the F32E mutation in the Eh-1 domain we transferred the mutated PRH cDNA present in the mammalian expression constructs to a bacterial expression vector downstream of a His-tag. The His-tagged proteins were then partially purified and used in EMSA in parallel with the EMSA carried out previously for the wild type PRH protein and the PRH proteins carrying mutations in the homeodomain. Figure 3C shows that PRH F32E is able to bind DNA and forms the same PRH-DNA complexes as wild type PRH (compare lanes 3 and 12). Therefore the PRH F32E mutation does not significantly alter the DNA binding properties of PRH.

The F32E mutation blocks the binding of the isolated PRH N-terminal domain to TLE in pull down experiments. To confirm that the F32E mutation inhibits the binding of PRH to TLE in the context of full length PRH protein *in vivo*, we carried out co-immunoprecipitation experiments with Myc-tagged PRH and Flag-tagged TLE1. Cell extracts were made from K562 cells expressing Myc-PRH and Flag-TLE1 or each of the mutant Myc-PRH proteins and Flag-TLE1 and immunoprecipitated with an anti-Myc antibody bound to Protein G beads. After extensive washing the proteins were loaded onto an SDS-PAGE and Western blotted with the Myc antibody to detect Myc-PRH and with a Flag antibody to detect Flag-TLE1. Figure 4C (upper panel) shows that the Myc-tagged PRH proteins are all immunoprecipitated by the Myc antibody to approximately the same extent. PRH and the PRH N187A and PRH R188A,R189A mutants all co-immunoprecipitate Flag-tagged TLE, whereas PRH F32E fails to co-immunoprecipitate TLE (lower panel). These data demonstrate that the F32E mutation in the PRH Eh-1 domain prevents the interaction of PRH and TLE in cells. In this experiment the PRH N187A appears to immunoprecipitate much more TLE than the corresponding wild type PRH protein which may reflect an increased binding affinity between PRH N187A and TLE proteins.

Repression by PRH requires retention of TLE proteins in the nuclear fraction.

In order to study the transcription repression properties of these mutated PRH proteins a reporter plasmid carrying the luciferase gene under the control of the TK promoter and 5 PRH binding sites was transiently transfected into K562 cells with vectors expressing PRH or the PRH mutants. In addition, all cells were co-transfected with a plasmid expressing β -galactosidase to act as a control for transient transfection efficiency. Figure 5A show that whilst PRH represses reporter activity to around 30% of the unrepressed level, the DNA binding deficient mutants PRH N187A and PRH R188A,R189A show little or no repression activity. In this assay PRH F32E is a very poor repressor and has no more repression activity than the DNA binding defective protein PRH N187A (Fig. 5A, column 6). PRH is able to repress transcription by several mechanisms including binding to the TATA box and we have shown previously that at high expression levels PRH F32E has some ability to repress transcription, presumably via binding to the TATA box or because of residual binding to TLE. Here we have directly compared the repression activity of PRH F32E with that of wild type PRH and Western blotting confirms that in this assay the proteins are expressed at equivalent levels in the transfected cells (Fig. 2B). We have demonstrated that PRH F32E does not influence the retention of TLE proteins in the nucleus and that this protein can bind to DNA like wild type PRH. We conclude that the direct interaction between PRH and TLE is essential for the enhanced nuclear

retention of TLE proteins brought about by PRH and plays an important role in transcriptional repression by PRH.

PRH N187A is trans-dominant over PRH

The data presented above demonstrate that PRH N187A, PRH R188A,R189A and PRH F32E are all defective in repression. In order to further dissect the mechanisms whereby PRH represses transcription, we next examined whether any of these mutant PRH proteins would have a trans-dominant negative activity over transcriptional repression by wild type PRH. The pTK-PRH reporter plasmid described above was transfected into K562 cells with plasmids expressing wild type PRH and increasing amounts of each of the plasmids expressing mutant PRH proteins. As before, all cells were transfected with a plasmid expressing β -galactosidase to control for transfection efficiency. Figure 5B shows that as expected, PRH represses transcription to about 40% of unrepressed promoter activity (lane 2). Increasing amounts of PRH N187A (lanes 3-5), PRH F32E (lanes 9-11) or PRH R188A,R189A (lanes 15-17) do not result in transcriptional repression (as shown previously in Fig. 5A). However, co-expression of PRH with increasing amounts of PRH N187A results in a significant decrease in repression by PRH (lanes 6-8) and at a 2:1 ratio of PRH N187:PRH there is almost a complete loss of repression. In contrast, co-expression of PRH with increasing amounts of PRH F32E (lanes 12-14) or PRH R188A,R189A (lanes 18-20) does not alter the repression activity of PRH. Thus, these data demonstrate that PRH N187A has a trans-dominant negative activity over wild-type PRH for transcriptional repression.

To investigate the mechanism of this trans-dominant inhibition of PRH repression activity we used site-directed mutagenesis to make two PRH expression plasmids that carry either a combination of the F32E and N187A mutations or the F32E and R188A,R189A mutations. K562 cells were transfected with the reporter plasmid, the PRH expression vector and increasing amounts of plasmids expressing these double mutants. Western blotting confirms that the double mutants are expressed at equivalent levels to wild type PRH (Fig. 5C). Figure 5D shows that PRH represses transcription to about 30% of unrepressed promoter activity (lane 2) and that increasing amounts of PRH F32E,N187A (lanes 3-5), or PRH F32E,R188A,R189A (lanes 9-11) do not result in transcriptional repression. Co-expression of PRH with increasing amounts of PRH F32E,N187A (lanes 6-8) or PRH F32E,R188A,R189A (12-14) does not result in a decrease in repression activity. Since PRH N187A has trans-dominant negative activity but PRH F32E,N187A does not, we infer that titration of TLE is essential for the trans-dominant negative activity of PRH N187A.

We have previously shown that Myc-PRH expression is cytoplasmic and diffuse nuclear [7] and that the accumulation of this protein in nuclear foci is apparent at lower levels of expression [2]. We have also shown that co-expression of PRH with Flag-TLE1 protein results in their co-localisation. Both proteins show diffuse nuclear staining but in addition there is co-localisation in sub-nuclear foci [7]. To determine whether the trans-dominant negative protein PRH N187A is able to sequester TLE proteins away from wild type PRH and into a particular sub-nuclear compartment we expressed Flag-TLE1 protein in K562 cells. The Flag-TLE protein shows a diffuse nuclear staining pattern (Figure 1A.) We also expressed each of the Myc-PRH proteins in K562 cells (Figure 3B and 4B) and these proteins also showed diffuse nuclear staining. Interestingly, the co-expression of Myc-PRH N187A and Flag-TLE1

shows strong co-localisation of the two proteins in sub-nuclear foci (Figure 5E) in immunofluorescent staining experiments (large yellow dots). In contrast, the coexpression of TRITC labelled Myc-PRH (wild type) or Myc-PRH F32E with Flag-TLE1 results in co-localisation in the nucleus in a predominantly diffuse nuclear staining pattern (Figure 5E). We conclude that the sub-nuclear localisation of PRH N187A and TLE1 are altered when the proteins are co-expressed. Thus, the interaction of PRH N187A with TLE results in the sequestration of TLE in a sub-nuclear compartment that is not the same as the sub-nuclear compartment occupied by wild type PRH and TLE1. We infer that the inability of PRH to bind to DNA prevents PRH N187A from taking TLE1 to the DNA/chromatin or alternatively prevents TLE1 from taking PRHN187A to the DNA/chromatin. In any event we conclude that sequestration of TLE proteins to an altered sub-nuclear localisation is involved in the trans-dominant negative activity of this protein.

Accepted Manuscript

THIS IS NOT THE VERSION OF RECORD - see doi:10.1042/BJ20080872

DISCUSSION

PRH is a transcriptional repressor protein that plays important roles in the regulation of several cellular processes including haematopoiesis. PRH is present in both the cytoplasm and nucleus of haematopoietic cells from myeloid lineages [7;27;31]. Aberrant expression of PRH or loss of nuclear localisation of PRH contributes to leukaemia [31]. K562 cells are blast cells that can spontaneously differentiate along myeloid and erythroid lineages. In the main these cells contain a very large nucleus and relatively little cytoplasm. Immunofluorescent staining of PRH and TLE proteins in these cells has shown that PRH and TLE can be present in both the nucleus and the cytoplasm [7]. We have used biochemical fractionation to examine the nuclear retention of TLE proteins. We have shown that endogenous nuclear TLE proteins are not tightly bound in the nuclei of K562 cells and fractionate into the post-nuclear fraction. However, in the presence of exogenous PRH, endogenous TLE proteins become strongly retained in the nuclear fraction. In other cell types the Hes1 and Runx-1 repressor proteins have been shown to bind to TLE and increase the nuclear retention of TLE by increasing the association of TLE with chromatin [49]. Further experiments are required to establish whether the mechanism of nuclear retention of TLE in the presence of PRH is similar to that effected by Hes1 and involves chromatin association of TLE proteins or other sub-nuclear compartments such as the nuclear matrix.

The mutation of asparagine to alanine (N187A) in the DNA recognition helix of the PRH homeodomain and mutation of adjacent arginine residues (R188A,R189A) results in proteins that are unable to bind to DNA. These mutants are both unable to influence the nuclear retention of TLE proteins although they are able to bind to TLE. In fractionation studies both PRH N187A and PRH R188A,R189A show both post-nuclear and nuclear distribution. PRH N187A acts as a trans-dominant negative protein in repression assays with wild type PRH. In contrast, PRH R188A,R189A does not act as a trans-dominant negative. Here we have shown that PRH N187A and TLE co-localise in sub-nuclear foci whereas PRH R188A,R189A and TLE do not co-localise in these foci. Presumably this difference accounts for the trans-dominant repression activity of PRH N187A. However the difference in the ability of these proteins to have trans-dominant activity over wild type PRH may be because PRH N187A has a higher affinity for TLE or because the PRH R188A,R189A has a subtle defect in nuclear retention. It is also possible that the higher affinity of PRH N187A for TLE and/or the subtle defect of PRH R188A,R189A in nuclear retention are responsible for the difference in sub-nuclear localisation. Finally we cannot rule out the possibility that sequestration of TLE is not wholly responsible for the trans-dominant negative activity of PRH N187A. PRH is known to form oligomers and it may be that PRH N187A but not the PRH R188A,R189A mutant, is able to form hetero-oligomers with wild type PRH and thereby block repression. Interestingly, it is clear that in complete contrast to previous reports, PRH R188A,R189A is able to enter the nucleus of K562 cells suggesting that this mutation does not strongly affect the nuclear localisation of PRH in these cells although this mutation does inhibit the nuclear localisation of PRH in NIH3T3 cells [12]. One reason for this discrepancy could be that K562 cell specific proteins might aid the nuclear import of this mutant.

As might be expected, a mutation in the Eh1 motif (F32E) located within the N-terminal domain of PRH reduces binding to TLE and blocks nuclear retention of TLE. Thus the retention of TLE proteins within the nucleus requires two properties of

the PRH protein: a direct protein-protein interaction between PRH and TLE and DNA binding by PRH. Neither DNA binding alone, nor TLE binding alone by PRH is sufficient for nuclear retention of TLE or in fact for transcriptional repression by PRH. Presumably the nuclear retention of TLE proteins is necessary for transcriptional repression by PRH. We have reported previously that although PRH F32E is defective in binding to TLE and defective in repression compared to wild-type PRH, it retains some repression activity when expressed at high levels. We suggest that this is because the mutant is not completely unable to bind TLE and retains weak TLE binding activity which may become apparent at very high expression levels.

Since a defect in binding TLE blocks repression as effectively as a defect in DNA binding, we conclude that most of the PRH-dependent repression observed at the pTK-PRH promoter is TLE-dependent. However it is possible that mutation of the Eh-1 domain might also affect the conformation of the PRH protein and hence also decrease the interaction of PRH with other PRH-interacting proteins. The trans-dominant negative activity of the DNA binding mutant PRH N187A together with the loss of this trans-dominant negative activity in the PRH F32E,N187A double mutant (cannot bind to DNA and TLE) reinforces the idea that transcriptional repression is very sensitive to the availability of TLE. PRH N187A may prove to be a useful tool for understanding the direct and indirect transcriptional activities of PRH. Clearly the ability of PRH N187A to act as a trans-dominant negative for PRH repression activity occurs through a very different mechanism from that inferred for the trans-dominant negative activity of a Nup-Hex/PRH fusion protein identified recently in a patient with Acute Myeloid Leukaemia. In the Nup-Hex/PRH fusion protein, the N-terminus of the Nucleoporin protein Nup98 is fused in frame with the homeodomain and C-terminus of PRH. In this case the N-terminus (TLE binding region) of PRH is absent in the fusion protein and it is thought that the trans-dominant negative function of Nup-Hex/PRH derives from the ability of the fusion protein to compete with PRH for PRH binding sites [32]. The experiments outlined above demonstrate that there is more than one way to block PRH repression activity and suggest that AML patients might harbour a variety of PRH mutations.

We have shown here that PRH directly affects nuclear retention of TLE and presumably as a consequence, availability of TLE in discrete sub-nuclear domains. Thus it is very likely that TLE-dependent genes may be equally sensitive to PRH levels. Further work is required to determine whether alterations in PRH expression impact on the plethora of TLE-repressed genes that do not appear to contain binding sites for PRH. Our studies have shown that PRH can influence the amount of available TLE proteins in the nucleus. However it is not known whether binding of TLE to PRH results in PRH sequestering TLE away from other transcription factors in the nucleus or whether PRH simply increases the amount of free TLE proteins in the nucleus. The Wnt signalling pathway functions in haematopoietic progenitors to promote self renewal [52]. TLE proteins are important antagonists for Wnt signalling [53;54]. The Notch signalling pathway also functions in haematopoietic progenitors to inhibit differentiation along myeloid lineages and thereby increase the amount of undifferentiated progenitors [55;56]. TLE proteins mediate the Notch signalling pathway and thereby promote the inhibition of differentiation [55;56]. Thus an increase in available TLE in the nucleus might be expected to inhibit self renewal and decrease differentiation. Interestingly PRH functions as an inhibitor of cell proliferation in early haematopoietic progenitors and in differentiated myeloid cells. Although the effect of PRH on cell proliferation has been shown to be through the

regulatory effect of PRH on the translation factor eIF4E [12], the anti-proliferative effects of PRH could also be a consequence of PRH altering the amount of available nuclear TLE.

Accepted Manuscript

ACKNOWLEDGMENTS

We are grateful to Professor Stefano Stifani (Montreal Neurological Institute, McGill University) for useful discussions. P.S.J. and K.G. are grateful to The Wellcome Trust, and BBSRC for Project Grant funding.

Accepted Manuscript

THIS IS NOT THE VERSION OF RECORD - see doi:10.1042/BJ20080872

FIGURE LEGENDS

Figure 1 PRH alters the distribution of TLE proteins in the cell

(A) K562 cells were transiently transfected with vectors expressing Flag-TLE1, Flag-TLE1 and GFP-PRH or Flag-TLE1 and GFP and then adhered to polylysine coated coverslips. DNA was stained with DAPI (blue). Flag-TLE1 was visualised using an anti-Flag antibody and a TRITC-labelled secondary antibody (red). GFP-PRH and GFP were visualised directly (green). The cells were viewed using a Leica DM IRBE confocal microscope. (B) K562 cells were transiently transfected with vectors expressing Flag-TLE1 or Flag-TLE1 and Myc-PRH and then adhered to polylysine coated coverslips. DNA was stained with DAPI (blue). Flag-TLE1 was visualised using an anti-Flag antibody and a FITC-labelled secondary antibody (green). Myc-PRH was visualised using the Myc9E10 antibody and a TRITC-labelled secondary antibody (red). The cells were viewed using confocal microscopy as above. (C) Untransfected K562 cells and cells transiently transfected with a vector expressing Myc-PRH were fractionated into post nuclear (PN) and nuclear (Nuc) extracts. The proteins were then separated by SDS.PAGE and Western blotted for endogenous TLE proteins (Endog. TLE) using a pan-TLE antibody (top panel), lamin A/C using a rabbit polyclonal anti-lamin antibody (second panel) tubulin using a mouse monoclonal anti-tubulin antibody (third panel) and Myc-PRH using the Myc9E10 antibody (bottom panel). (D) K562 nuclear extracts from cells expressing Myc-PRH were incubated with a cocktail of phosphatase inhibitors in CIP buffer for 30 mins at 4°C (lane 1) or 37° C (lane 2). 1µl (lane 3) or 2 µl (lane 4) of CIP was added to nuclear extracts without phosphatase inhibitors for 30 mins at 37°C. 2µl CIP (lane 5) was added to nuclear extracts containing phosphatase inhibitors for 30 mins at 37°C.

Figure 2 PRH mutants used in this study.

(A) A schematic representation of the PRH protein and the PRH mutants used in this study. The Myc tag is represented by the filled box. The proline-rich domain and homeodomain (HD) are indicated. (B) Whole cell extracts were prepared from untransfected K562 cells (1) and cells transiently transfected with vectors expressing Myc-PRH (2), Myc-PRH R188A,R189A (3), Myc-PRH N187A (4) or Myc-PRH F32E (5). The proteins were then separated by SDS.PAGE and Western blotted for PRH using the Myc9E10 antibody and a mouse monoclonal anti-tubulin antibody as a control for protein loading.

Figure 3 Mutations in the PRH homeodomain block nuclear retention of TLE

(A) Untransfected K562 cells and cells transiently transfected with vectors expressing Myc-PRH, Myc-PRH N187A, or Myc-PRH R188A,R189A were fractionated into post nuclear and nuclear extracts. The proteins were then separated by SDS.PAGE and Western blotted for endogenous TLE (TLE) (top panel), lamin A/C (second panel), tubulin (third panel), or Myc-PRH proteins (bottom panel) as described in Fig. 1C. (B) K562 cells growing on coverslips were transiently transfected with vectors expressing Myc-PRH, Myc-PRH N187A, or Myc-PRH R188A,R189A. DNA was stained with DAPI (blue) and Myc-PRH was visualised using the Myc9E10 antibody and a TRITC-labelled secondary antibody (red). The cells were viewed using a Leica DM IRBE confocal microscope. (C) A labelled oligonucleotide carrying a PRH binding site was incubated with increasing concentrations (125, 250 and 500nM) of histidine-tagged PRH (lanes 1-3), or histidine-tagged PRH R188A,R189A (lanes 4-6), PRH N187A (lanes 7-9), and PRH F32E (lanes 10-12) under the conditions described in the text. Free and bound DNA was then resolved on a 6% polyacrylamide gel and

visualised using a PhosphorImager. Two retarded complexes (C1 and C2) are formed when PRH binds to the DNA.

Figure 4 Mutation of the PRH Eh-1 motif blocks the nuclear retention of TLE.

(A) Untransfected K562 cells and cells transiently transfected with vectors expressing Myc-PRH, or Myc-PRH F32E were fractionated into post nuclear and nuclear extracts. The proteins were then separated by SDS.PAGE and Western blotted for endogenous TLE (TLE) (top panel), Myc-PRH proteins (bottom panel), lamin A/C (second panel) or tubulin (third panel) as described in Fig. 1C. (B) K562 cells growing on coverslips were transiently transfected with a vector expressing Myc-PRH F32E. DNA was stained with DAPI (blue) and Myc-PRH F32E (red) was visualised exactly as described in Fig. 3B. (C) Whole cell extracts were prepared from K562 cells transiently co-transfected with a vector expressing Flag-TLE1 and vectors expressing Myc-PRH (1), Myc-PRH R188A,R189A (2), Myc-PRH N187A (3) or Myc-PRH F32E (4). The Myc-tagged proteins were then immunoprecipitated using the Myc9E10 antibody. The immunoprecipitated proteins were separated by SDS.PAGE and western blotted for PRH using the Myc9E10 antibody (top panel) and co-immunoprecipitated TLE using the Flag antibody (lower panel).

Figure 5 PRH N187A is trans-dominant over PRH in transcription repression assays.

The graphs shows the relative promoter activity found in K562 cell extracts 24 h after transient co-transfection with a reporter plasmid containing the luciferase gene under the control of the TK promoter and 5 PRH binding sites (pTK-PRH), a β -galactosidase expression plasmid (pSV-lacZ) and PRH expression vectors. Relative promoter activity is the luciferase activity normalized with respect to transfection efficiency using the co-transfected β -galactosidase plasmid. Each transfection was performed a minimum of three times and the values shown are the means and standard deviation. (A) K562 cells were transfected with 5 μ g pTK-PRH alone (1), or pTK-PRH and 1 μ g of an empty expression vector (2), or pTK-PRH and 1 μ g pMUG1-PRH (3), pMUG1-PRH R188A,R189A (4), pMUG1-PRH N187A (5), pMUG1-PRH F32E (5). (B) K562 cells were transfected with 5 μ g of pTK-PRH alone (1), pTK-PRH and 1 μ g of pMUG1-PRH (2), or pTK-PRH and increasing amounts (0.5, 1 and 2 μ g) of the expressor plasmids indicated either with (filled bars) or without (empty bars) 1 μ g of co-transfected pMUG1-PRH. (C) Whole cell extracts were prepared from untransfected K562 cells (1) and cells transiently transfected with vectors expressing Myc-PRH F32E,N187A (2), Myc-PRH F32E,R188A,R189A (3) or Myc-PRH (4). The proteins were then separated by SDS.PAGE and Western blotted for PRH using the Myc9E10 antibody. The membrane was stripped and reprobed with tubulin antibody as a control for protein loading. (D) The experiment described in part B was repeated using vectors expressing the PRH double mutants PRH F32E,N187A and PRH F32E,R188A,R189A. (E) K562 cells were transiently transfected with vectors expressing Flag-TLE1 and Myc-PRH or Myc tagged PRH mutant proteins and then adhered to polylysine coated coverslips. DNA was stained with DAPI (blue). Flag-TLE1 was visualised using an anti-Flag antibody and a FITC-labelled secondary antibody (green). Myc-PRH was visualised using the Myc9E10 antibody and a TRITC-labelled secondary antibody (red). The cells were viewed using confocal microscopy as above. Co-localised proteins produce yellow colour.

Reference List

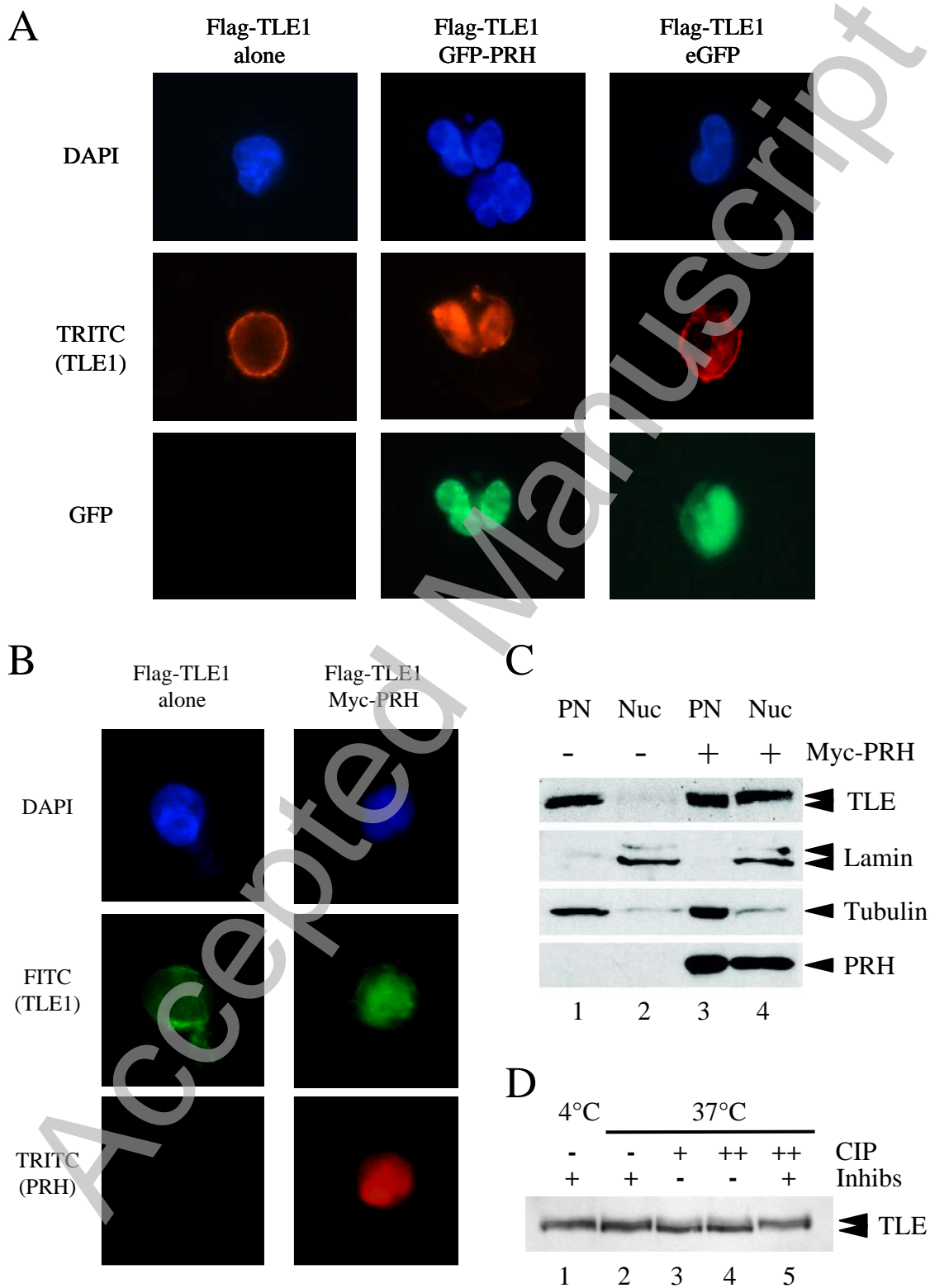
- 1 Soufi, A. and Jayaraman P-S. (2008). PRH/Hex: an oligomeric transcription factor and multifunctional regulator of cell fate. *Biochem.J.* 412, 399-413.
- 2 Soufi, A., Smith, C., Clarke, A. R., Gaston, K., and Jayaraman, P. S. (2006). Oligomerisation of the developmental regulator proline rich homeodomain (PRH/Hex) is mediated by a novel proline-rich dimerisation domain. *J.Mol.Biol.* 358, 943-962.
- 3 Tanaka, T., Inazu, T., Yamada, K., Myint, Z., Keng, V. W., Inoue, Y., Taniguchi, N., and Noguchi, T. (1999). cDNA cloning and expression of rat homeobox gene, Hex, and functional characterization of the protein. *Biochem.J.* 339, 111-117.
- 4 Pellizzari, L., D'Elia, A., Rustighi, A., Manfioletti, G., Tell, G., and Damante, G. (2000). Expression and function of the homeodomain-containing protein Hex in thyroid cells *Nucleic Acids Res.* 28, 2503-2511.
- 5 Brickman, J. M., Jones, C. M., Clements, M., Smith, J. C., and Beddington, R. S. (2000). Hex is a transcriptional repressor that contributes to anterior identity and suppresses Spemann organiser function. *Development* 127, 2303-2315.
- 6 Guiral, M., Bess, K., Goodwin, G., and Jayaraman, P. S. (2001). PRH represses transcription in hematopoietic cells by at least two independent mechanisms. *J.Biol.Chem.* 276, 2961-2970.
- 7 Swingler, T. E., Bess, K. L., Yao, J., Stifani, S., and Jayaraman, P. S. (2004). The proline-rich homeodomain protein recruits members of the Groucho/Transducin-like enhancer of split protein family to co-repress transcription in hematopoietic cells. *J.Biol.Chem.* 279, 34938-34947.
- 8 Denson, L. A., Karpen, S. J., Bogue, C. W., and Jacobs, H. C. (2000). Divergent homeobox gene hex regulates promoter of the Na(+)-dependent bile acid cotransporter. *Am.J.Physiol Gastrointest.Liver Physiol* 279, G347-G355
- 9 Minami, T., Murakami, T., Horiuchi, K., Miura, M., Noguchi, T., Miyazaki, J., Hamakubo, T., Aird, W. C., and Kodama, T. (2004). Interaction between hex and GATA transcription factors in vascular endothelial cells inhibits flk-1/KDR-mediated vascular endothelial growth factor signaling. *J.Biol.Chem.* 279, 20626-20635.
- 10 Sekiguchi, K., Kurabayashi, M., Oyama, Y., Aihara, Y., Tanaka, T., Sakamoto, H., Hoshino, Y., Kanda, T., Yokoyama, T., Shimomura, Y., Iijima, H., Ohyama, Y., and Nagai, R. (2001). Homeobox protein Hex induces SMemb/nonmuscle myosin heavy chain-B gene expression through the cAMP-responsive element. *Circ.Res.* 88, 52-58.
- 11 Schaefer, L. K., Shuguang, W., and Schaefer, T. S. (2001). Functional interaction of Jun and homeodomain proteins. *J.Biol.Chem.* 276, 43074-43082.

- 12 Topisirovic, I., Culjkovic, B., Cohen, N., Perez, J. M., Skrabanek, L., and Borden, K. L. (2003). The proline-rich homeodomain protein, PRH, is a tissue-specific inhibitor of eIF4E-dependent cyclin D1 mRNA transport and growth. *EMBO J.* *22*, 689-703.
- 13 Bogue, C. W., Zhang, P. X., McGrath, J., Jacobs, H. C., and Fuleihan, R. L. (2003). Impaired B cell development and function in mice with a targeted disruption of the homeobox gene *Hex*. *Proc.Natl.Acad.Sci.U.S.A* *100*, 556-561.
- 14 Hallaq, H., Pinter, E., Enciso, J., McGrath, J., Zeiss, C., Brueckner, M., Madri, J., Jacobs, H. C., Wilson, C. M., Vasavada, H., Jiang, X., and Bogue, C. W. (2004). A null mutation of *Hhex* results in abnormal cardiac development, defective vasculogenesis and elevated *Vegfa* levels. *Development* *131*, 5197-5209.
- 15 Martinez Barbera, J. P., Clements, M., Thomas, P., Rodriguez, T., Meloy, D., Kioussis, D., and Beddington, R. S. (2000). The homeobox gene *Hex* is required in definitive endodermal tissues for normal forebrain, liver and thyroid formation. *Development* *127*, 2433-2445.
- 16 Guo, Y., Chan, R., Ramsey, H., Li, W., Xie, X., Shelley, W. C., Martinez-Barbera, J. P., Bort, B., Zaret, K., Yoder, M., and Hromas, R. (2003). The homeoprotein *Hex* is required for hemangioblast differentiation. *Blood* *102*, 2428-2435.
- 17 Kubo, A., Chen, V., Kennedy, M., Zahradka, E., Daley, G. Q., and Keller, G. (2005). The homeobox gene *HEX* regulates proliferation and differentiation of hemangioblasts and endothelial cells during ES cell differentiation. *Blood* *105*, 4590-4597.
- 18 Liao, W., Ho, C. Y., Yan, Y. L., Postlethwait, J., and Stainier, D. Y. (2000). *Hhex* and *scl* function in parallel to regulate early endothelial and blood differentiation in zebrafish. *Development* *127*, 4303-4313.
- 19 Newman, C. S., Chia, F., and Krieg, P. A. (1997). The *XHex* homeobox gene is expressed during development of the vascular endothelium: overexpression leads to an increase in vascular endothelial cell number. *Mech.Dev.* *66*, 83-93.
- 20 Thomas, P. Q., Brown, A., and Beddington, R. S. (1998). *Hex*: a homeobox gene revealing peri-implantation asymmetry in the mouse embryo and an early transient marker of endothelial cell precursors. *Development* *125*, 85-94.
- 21 Hromas, R., Radich, J., and Collins, S. (1993). PCR cloning of an orphan homeobox gene (*PRH*) preferentially expressed in myeloid and liver cells. *Biochem.Biophys.Res.Commun.* *195*, 976-983.
- 22 Mack, D. L., Leibowitz, D. S., Cooper, S., Ramsey, H., Broxmeyer, H. E., and Hromas, R. (2002). Down-regulation of the myeloid homeobox protein *Hex* is essential for normal T-cell development. *Immunology* *107*, 444-451.

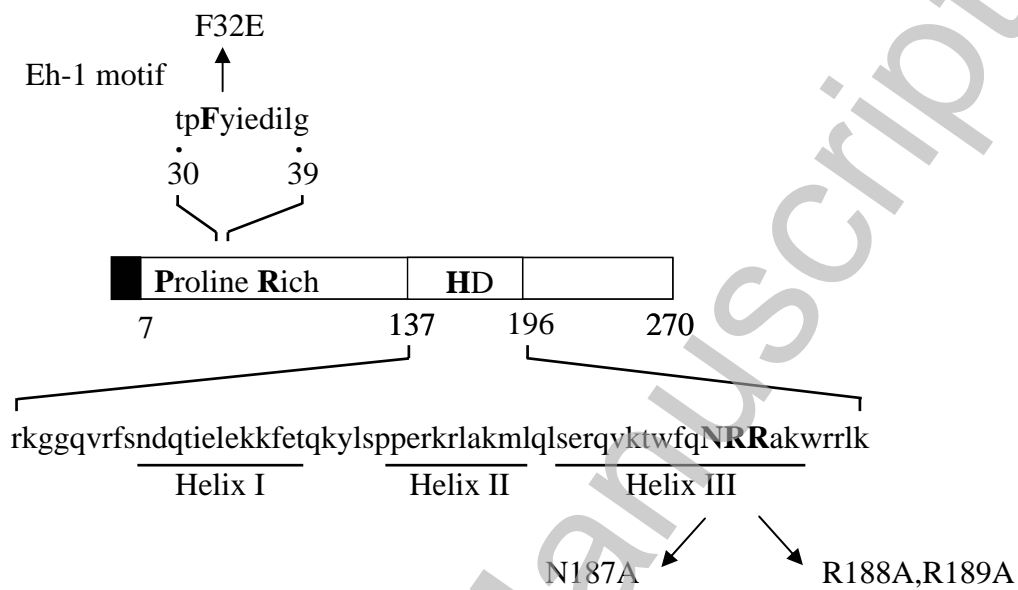
- 23 Bedford, F. K., Ashworth, A., Enver, T., and Wiedemann, L. M. (1993). HEX: a novel homeobox gene expressed during haematopoiesis and conserved between mouse and human. *Nucleic Acids Res.* *21*, 1245-1249.
- 24 Manfioletti, G., Gattei, V., Buratti, E., Rustighi, A., De Iulii, A., Aldinucci, D., Goodwin, G. H., and Pinto, A. (1995). Differential expression of a novel proline-rich homeobox gene (Prh) in human hematolymphopoietic cells. *Blood* *85*, 1237-1245.
- 25 Bogue, C. W., Ganea, G. R., Sturm, E., Ianucci, R., and Jacobs, H. C. (2000). Hex expression suggests a role in the development and function of organs derived from foregut endoderm. *Dev. Dyn.* *219*, 84-89.
- 26 Jayaraman, P., Frampton, J., and Goodwin, G. (2000). The homeodomain protein PRH influences the differentiation of haematopoietic cells. *Leuk. Res.* *24*, 1023-1031.
- 27 Topcu, Z., Mack, D. L., Hromas, R. A., and Borden, K. L. (1999). The promyelocytic leukemia protein PML interacts with the proline-rich homeodomain protein PRH: a RING may link hematopoiesis and growth control. *Oncogene* *18*, 7091-7100.
- 28 Nakagawa, T., Abe, M., Yamazaki, T., Miyashita, H., Niwa, H., Kokubun, S., and Sato, Y. (2003). HEX acts as a negative regulator of angiogenesis by modulating the expression of angiogenesis-related gene in endothelial cells in vitro. *Arterioscler. Thromb. Vasc. Biol.* *23*, 231-237.
- 29 Obinata, A., Akimoto, Y., Omoto, Y., and Hirano, H. (2002). Expression of Hex homeobox gene during skin development: Increase in epidermal cell proliferation by transfecting the Hex to the dermis. *Dev. Growth Differ.* *44*, 281-292.
- 30 George, A., Morse, H. C., III, and Justice, M. J. (2003). The homeobox gene Hex induces T-cell-derived lymphomas when overexpressed in hematopoietic precursor cells. *Oncogene* *22*, 6764-6773.
- 31 Topisirovic, I., Guzman, M. L., McConnell, M. J., Licht, J. D., Culjkovic, B., Neering, S. J., Jordan, C. T., and Borden, K. L. (2003). Aberrant eukaryotic translation initiation factor 4E-dependent mRNA transport impedes hematopoietic differentiation and contributes to leukemogenesis. *Mol. Cell Biol.* *23*, 8992-9002.
- 32 Jankovic D, Gorello P., Liu T., Ehret S., La Starza R., Desjobert C., Baty M, Brutsche M., Jayaraman P-S., Santoro A., Mecucci C., and Schwaller J. (2008). Leukemogenic mechanisms and targets of a NUP98/HHEX fusion in acute myeloid leukemia (AML). *Blood* *111*, 5672-5682.
- 33 Bess, K. L., Swingler, T. E., Rivett, J., Gaston, K., and Jayaraman, P. S. (2003). The transcriptional repressor protein PRH interacts with the proteasome. *Biochem. J.* *374*, 667-675.

- 34 Soufi, A., Gaston, K., and Jayaraman, P. S. (2006). Purification and characterisation of the PRH homeodomain: Removal of the N-terminal domain of PRH increases the PRH homeodomain-DNA interaction. *Int.J.Biol.Macromol.* *39*, 45-50.
- 35 Kasamatsu, S., Sato, A., Yamamoto, T., Keng, V. W., Yoshida, H., Yamazaki, Y., Shimoda, M., Miyazaki, J., and Noguchi, T. (2004). Identification of the transactivating region of the homeodomain protein, hex. *J.Biochem.(Tokyo)* *135*, 217-223.
- 36 Courey, A. J. and Jia, S. (2001). Transcriptional repression: the long and the short of it. *Genes Dev.* *15*, 2786-2796.
- 37 Dasen, J. S., Barbera, J. P., Herman, T. S., Connell, S. O., Olson, L., Ju, B., Tollkuhn, J., Baek, S. H., Rose, D. W., and Rosenfeld, M. G. (2001). Temporal regulation of a paired-like homeodomain repressor/TLE corepressor complex and a related activator is required for pituitary organogenesis. *Genes Dev.* *15*, 3193-3207.
- 38 Dehni, G., Liu, Y., Husain, J., and Stifani, S. (1995). TLE expression correlates with mouse embryonic segmentation, neurogenesis, and epithelial determination. *Mech.Dev.* *53*, 369-381.
- 39 Eastman, Q. and Grosschedl, R. (1999). Regulation of LEF-1/TCF transcription factors by Wnt and other signals. *Curr.Opin.Cell Biol.* *11*, 233-240.
- 40 Levanon, D., Goldstein, R. E., Bernstein, Y., Tang, H., Goldenberg, D., Stifani, S., Paroush, Z., and Groner, Y. (1998). Transcriptional repression by AML1 and LEF-1 is mediated by the TLE/Groucho corepressors. *Proc.Natl.Acad.Sci.U.S.A* *95*, 11590-11595.
- 41 Chen, G., Fernandez, J., Mische, S., and Courey, A. J. (1999). A functional interaction between the histone deacetylase Rpd3 and the corepressor groucho in *Drosophila* development. *Genes Dev.* *13*, 2218-2230.
- 42 Boddy, M. N., Freemont, P. S., and Borden, K. L. (1994). The p53-associated protein MDM2 contains a newly characterized zinc-binding domain called the RING finger. *Trends Biochem.Sci.* *19*, 198-199.
- 43 Choi, C. Y., Kim, Y. H., Kwon, H. J., and Kim, Y. (1999). The homeodomain protein NK-3 recruits Groucho and a histone deacetylase complex to repress transcription. *J.Biol.Chem.* *274*, 33194-33197.
- 44 Palaparti, A., Baratz, A., and Stifani, S. (1997). The Groucho/transducin-like enhancer of split transcriptional repressors interact with the genetically defined amino-terminal silencing domain of histone H3. *J.Biol.Chem.* *272*, 26604-26610.
- 45 Chen, G., Nguyen, P. H., and Courey, A. J. (1998). A role for groucho tetramerization in transcriptional repression. *Mol.Cell Biol.* *18*, 7259-7268.

- 46 Song, H., Hasson, P., Paroush, Z., and Courey, A. J. (2004). Groucho oligomerization is required for repression in vivo. *Mol.Cell Biol.* 24, 4341-4350.
- 47 Husain, J., Lo, R., Grbavec, D., and Stifani, S. (1996). Affinity for the nuclear compartment and expression during cell differentiation implicate phosphorylated Groucho/TLE1 forms of higher molecular mass in nuclear functions *Biochem.J.* 317, 523-531.
- 48 Nuthall, H. N., Joachim, K., Palaparti, A., and Stifani, S. (2002). A Role for Cell Cycle-regulated Phosphorylation in Groucho-mediated Transcriptional Repression. *J.Biol.Chem.* 277, 51049-51057.
- 49 Nuthall, H. N., Husain, J., McLarren, K. W., and Stifani, S. (2002). Role for Hes1-induced phosphorylation in Groucho-mediated transcriptional repression. *Mol.Cell Biol.* 22, 389-399.
- 50 Eberhard, D., Jimenez, G., Heavey, B., and Busslinger, M. (2000). Transcriptional repression by Pax5 (BSAP) through interaction with corepressors of the Groucho family *EMBO J.* 19, 2292-2303.
- 51 Choi, C. Y., Kim, Y. H., Kim, Y. O., Park, S. J., Kim, E. A., Riemenschneider, W., Gajewski, K., Schulz, R. A., and Kim, Y. (2005). Phosphorylation by the DHIPK2 protein kinase modulates the corepressor activity of Groucho. *J.Biol.Chem.* 280, 21427-21436.
- 52 Reya, T., Duncan, A. W., Ailles, L., Domen, J., Scherer, D. C., Willert, K., Hintz, L., Nusse, R., and Weissman, I. L. (2003). A role for Wnt signalling in self-renewal of haematopoietic stem cells. *Nature* 423, 409-414.
- 53 Brantjes, H., Roose, J., van de Wetering, M., and Clevers, H. (2001). All Tcf HMG box transcription factors interact with Groucho-related co-repressors. *Nucleic Acids Res.* 29, 1410-1419.
- 54 Roose, J., Molenaar, M., Peterson, J., Hurenkamp, J., Brantjes, H., Moerer, P., van de, W. M., Destree, O., and Clevers, H. (1998). The Xenopus Wnt effector XTcf-3 interacts with Groucho-related transcriptional repressors *Nature* 395, 608-612
- 55 Artavanis-Tsakonas, S., Rand, M. D., and Lake, R. J. (1999). Notch signaling: cell fate control and signal integration in development *Science* 284, 770-776.
- 56 Ohishi, K., Katayama, N., Shiku, H., Varnum-Finney, B., and Bernstein, I. D. (2003). Notch signalling in hematopoiesis. *Semin.Cell Dev.Biol.* 14, 143-150.



A



B

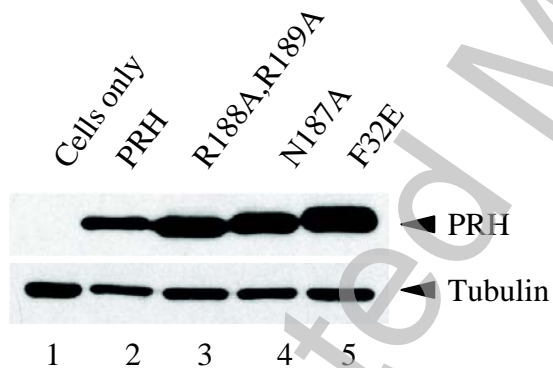
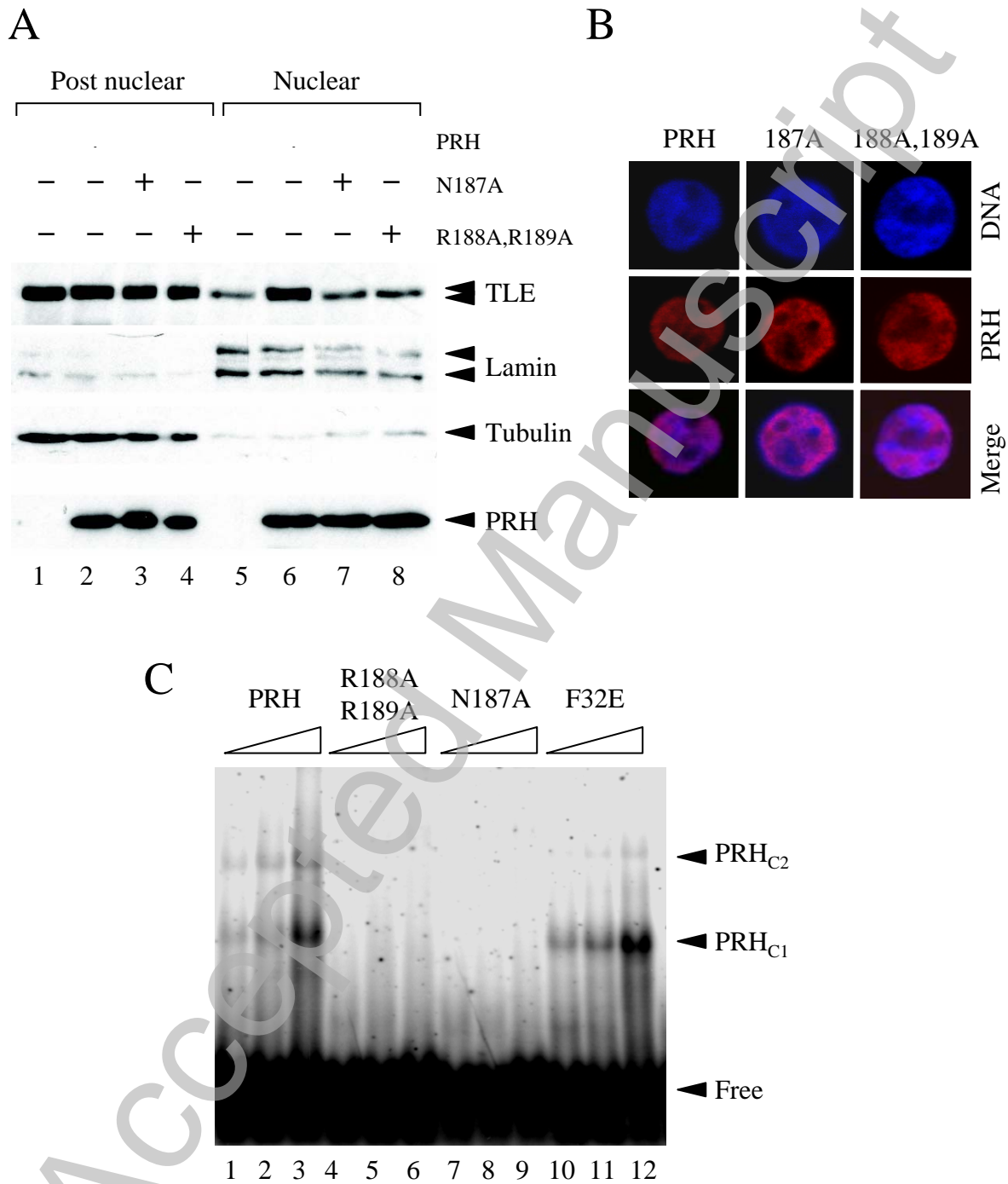
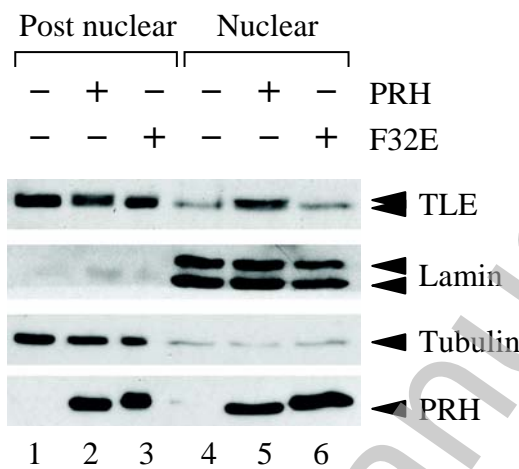


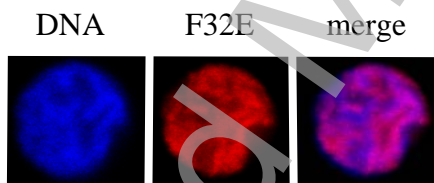
Figure 3



A



B



C

